

POP

Ideas About Floors
Issue 1: Flow



mission



Mission Zero:

Our promise to eliminate any negative impact our company may have on the environment by the year 2020.

CIM# IFS00750



POP: Ideas about floors
No. 1 in a series by Interface

United States Headquarters
1503 Orchard Hill Road
LaGrange, GA 30240
1.800.336.0225 ext 56511

interface.com



Interface®

Interface®

POP

*Flow happens
when the way is clear.
Every detail can
enhance an experience,
create confidence,
even improve a mood.
We make the floor
work a little harder.
Having a place to start
makes it easy.*

Interface®

This will only take a minute. You're holding a powerful tool in your hands to inspire projects and help you get things done. POP has floors that solve design problems and make a statement.

In this first issue, we explore the idea of FLOW in a wide range of styles, colors, and patterns.

At Interface, our most popular floors are available to you right away. All the floors featured here? That's right. Elegant, affordable, and fast.

Find more floor solutions and customize to make them your own at interface.com/pop

FLOW

ENTRYWAYS / 4

PATHWAYS / 16

DECISIONS / 28

DESTINATIONS / 40

MORE / 52

All around us



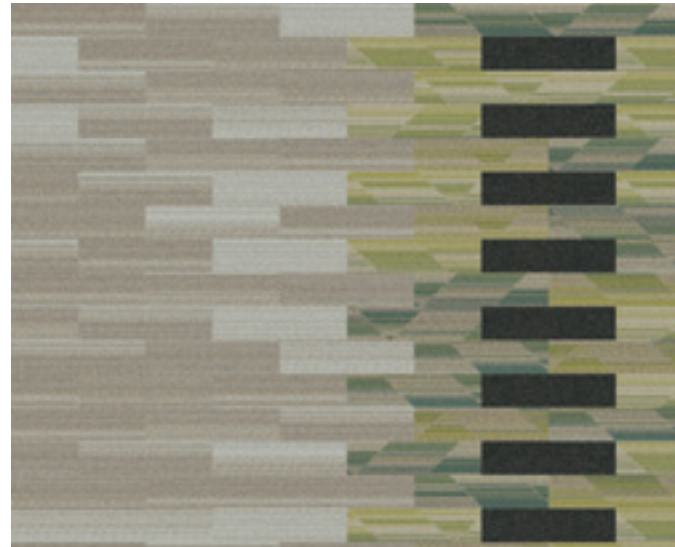
Entryways



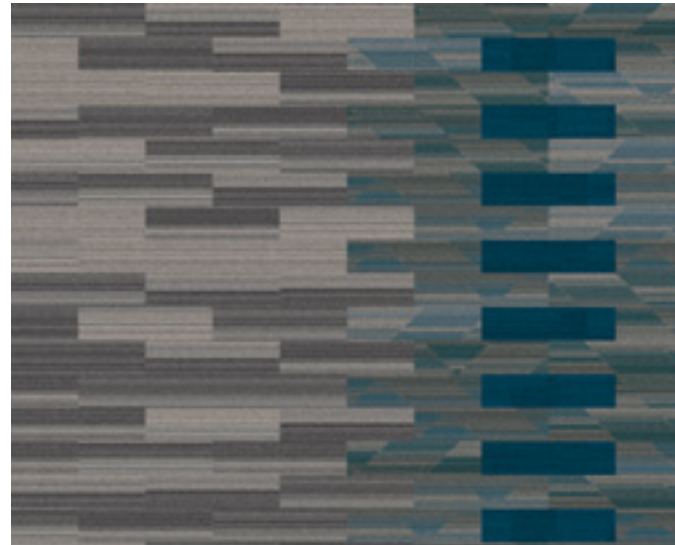
The Way In

The path leads to an entrance or meeting place, steps like wooden planks or piano keys say by all means, the way is open. Slats of color suggest shadows down a tree-lined walkway, inviting you. The floor couldn't be more clear.

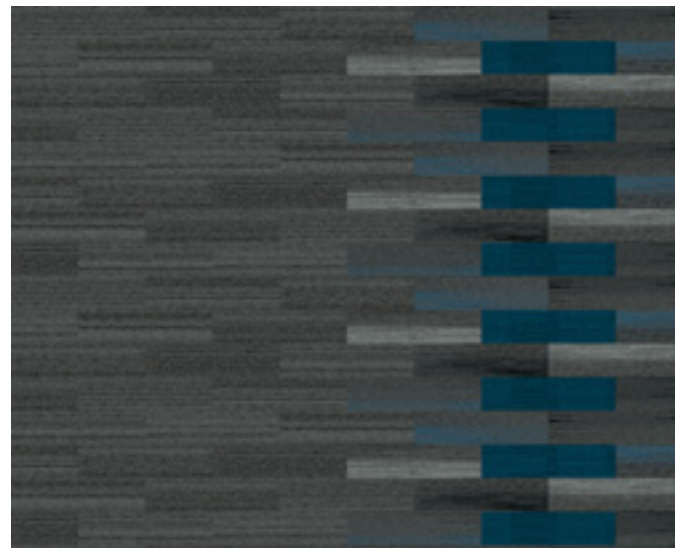
[interface.com/pop1](https://www.interface.com/pop1)



SHIVER ME TIMBERS BEECH \$\$ DRIFTWOOD PALM \$\$ ON LINE PEPPER \$\$\$



SHIVER ME TIMBERS CYPRUS \$\$ DRIFTWOOD SWEETGUM \$\$ ON LINE OCEAN \$\$\$



SL910 GRAPHITE \$\$\$ SL930 GRAPHITE FADE \$\$\$ ON LINE OCEAN \$\$\$

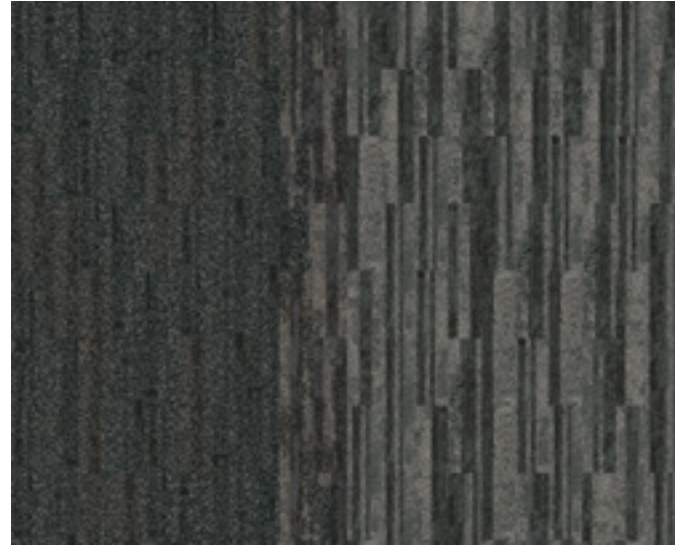


SHIVER ME TIMBERS BEECH \$\$ DRIFTWOOD PALM \$\$ ON LINE LAGOON \$\$\$

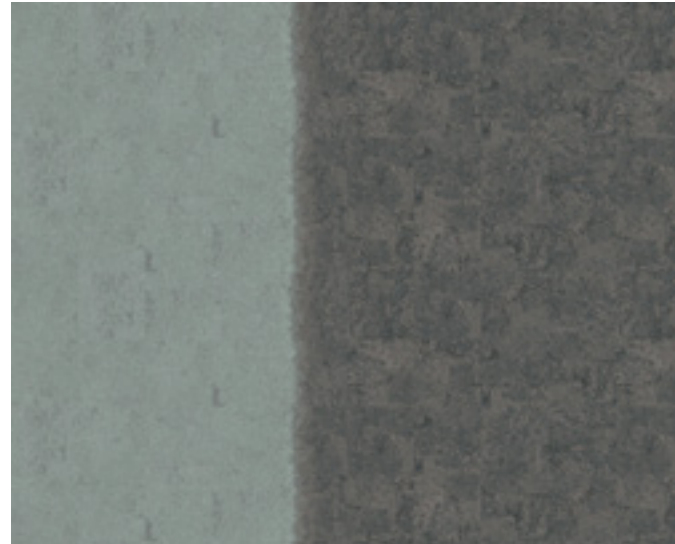
The First Stop

Like a raft, the floor in front of reception invites a quiet place to wait before entering the stream of things. Subtle pattern shifts suggest more than words can say about how a company intends their space. Wait here, engage, continue.

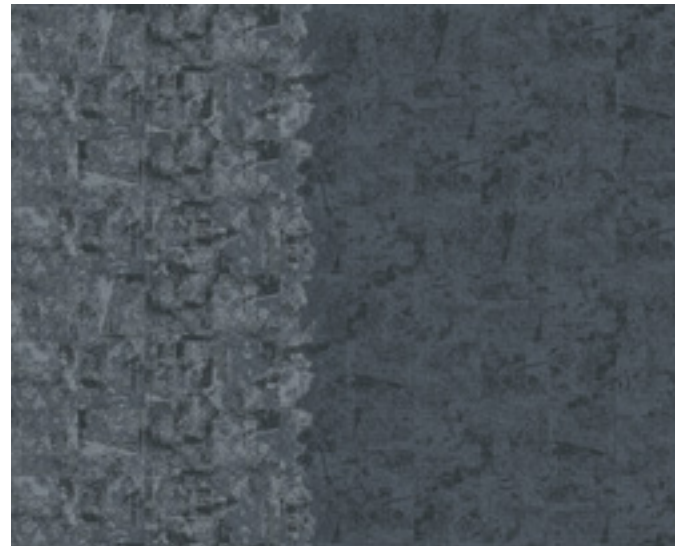
[interface.com/pop2](https://www.interface.com/pop2)



HN840 SLATE \$\$\$\$ HN850 SLATE \$\$\$\$ HN810 SLATE \$\$\$\$



UR103 LICHEN \$\$\$\$ UR101 GRANITE/LICHEN \$\$\$\$ UR102 GRANITE \$\$\$\$



B601 BLACK SEA \$\$\$\$ B602 BLACK SEA \$\$\$\$ B603 BLACK SEA \$\$\$\$

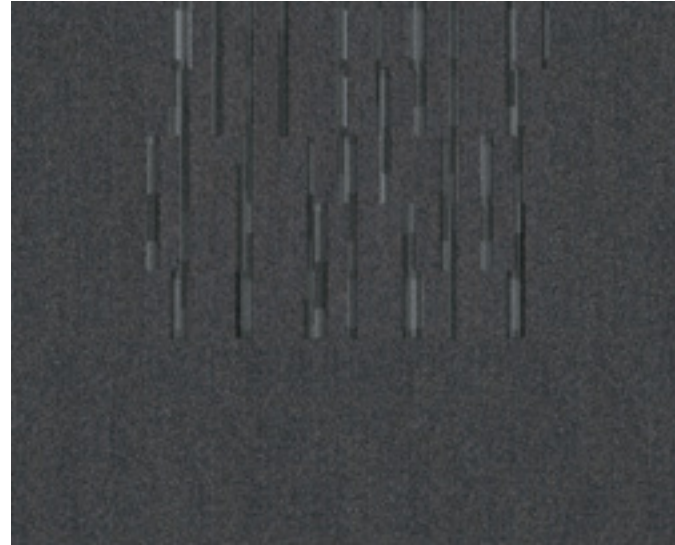


HN810 NICKEL \$\$\$\$ HN840 NICKEL \$\$\$\$ HN850 NICKEL \$\$\$\$

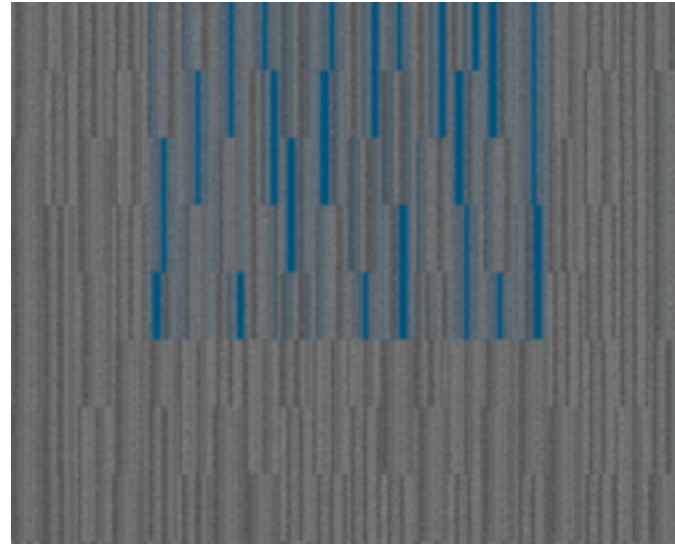
Highlight an Area

A safe place to land can be as simple as brand colors standing out against a neutral field. The floor gives subtle cues that reveal where to best reach help, like a lily pad when the waters are deep.

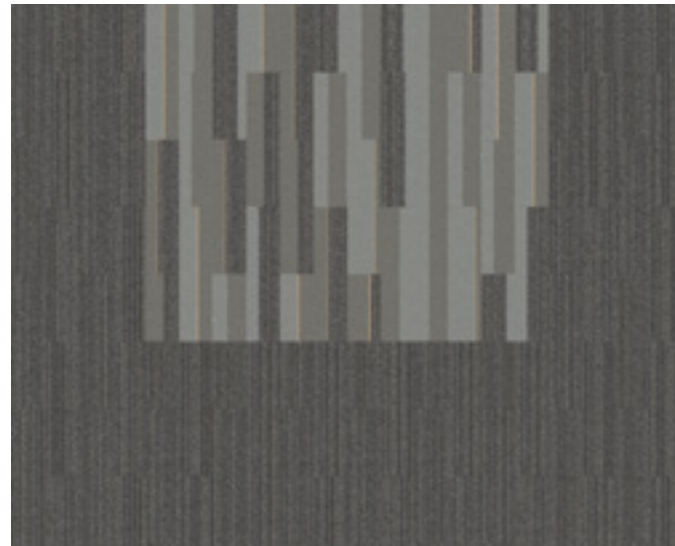
interface.com/pop3



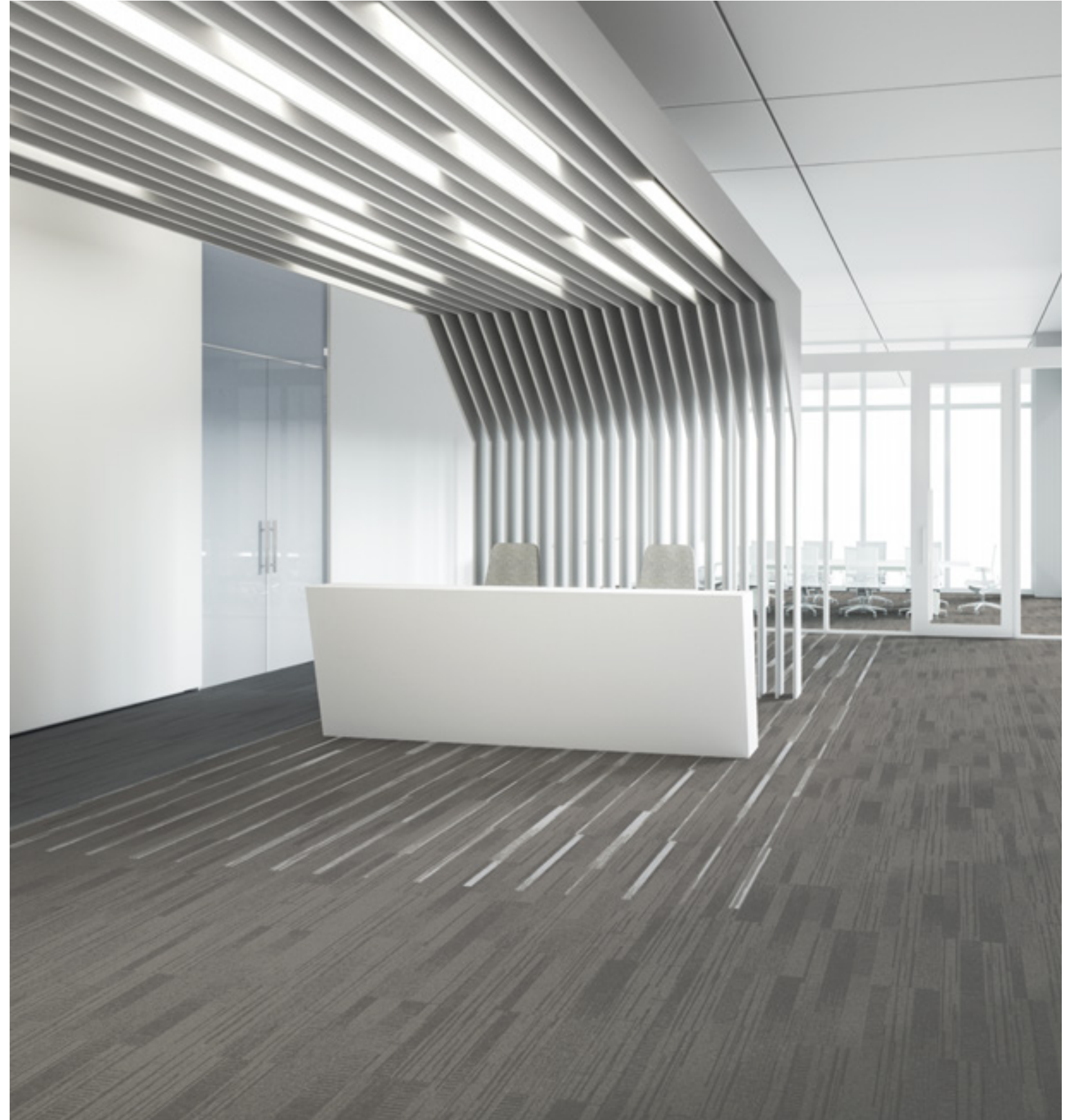
OFF LINE PEPPER/CLOUD \$\$\$ ON LINE PEPPER \$\$\$



SS218 CROSSROAD/LAGUNA \$ SS217 CROSSROAD \$



PH210 DUSK BANDS \$\$ PH211 DUSK \$\$

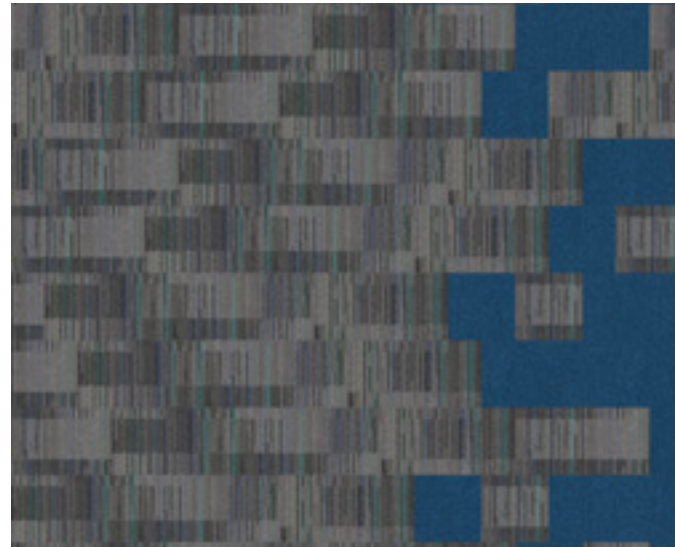


DUO STONE \$\$\$ TRIO GRAY/STONE \$\$\$

Stepping Stones

Navigate unsure spaces like a favorite forest path. The floor reveals one space as different from the other, marks an edge without drawing a line. When you delineate place intuitively, the path is clear.

[interface.com/pop4](https://www.interface.com/pop4)



STRAIGHT EDGE SLATE \$ VIVA COLORES ZAFIRO \$\$



STRAIGHT EDGE BROWN \$ VIVA COLORES VERDE PRIMAVERA \$\$



ALLITERATION MINERAL/PERSIMMON \$\$\$ VIVA COLORES MANDARINA \$\$

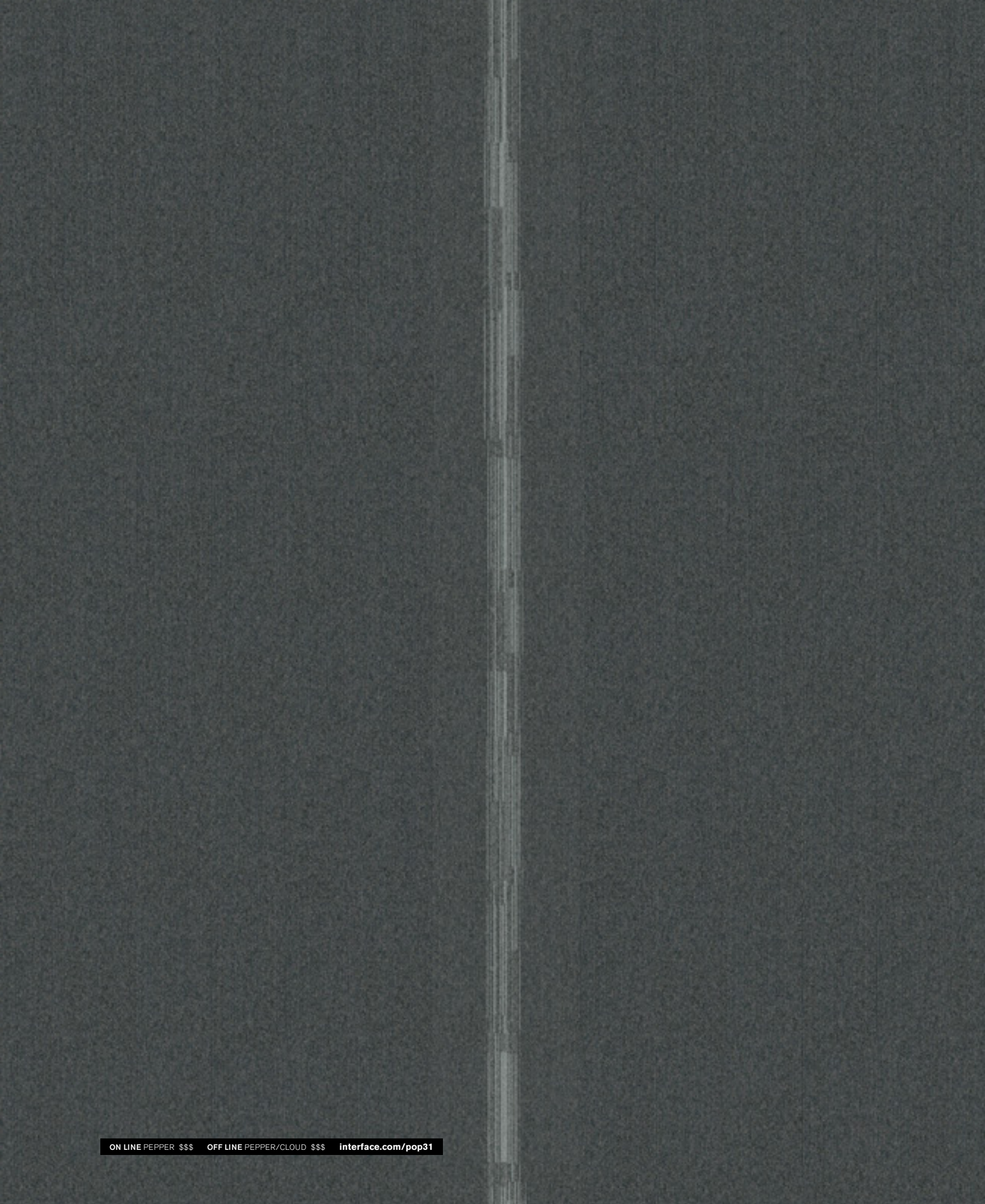


STRAIGHT EDGE NAVY \$ VIVA COLORES AZUL VERDOSO \$\$



What's next

Pathways



Alert

Knowing where not to go can be vital information. A color splash gives a gentle warning and reveals a company's preference for the use of space. This hallway seems off-limits. Maybe we should talk over here.

[interface.com/pop5](https://www.interface.com/pop5)



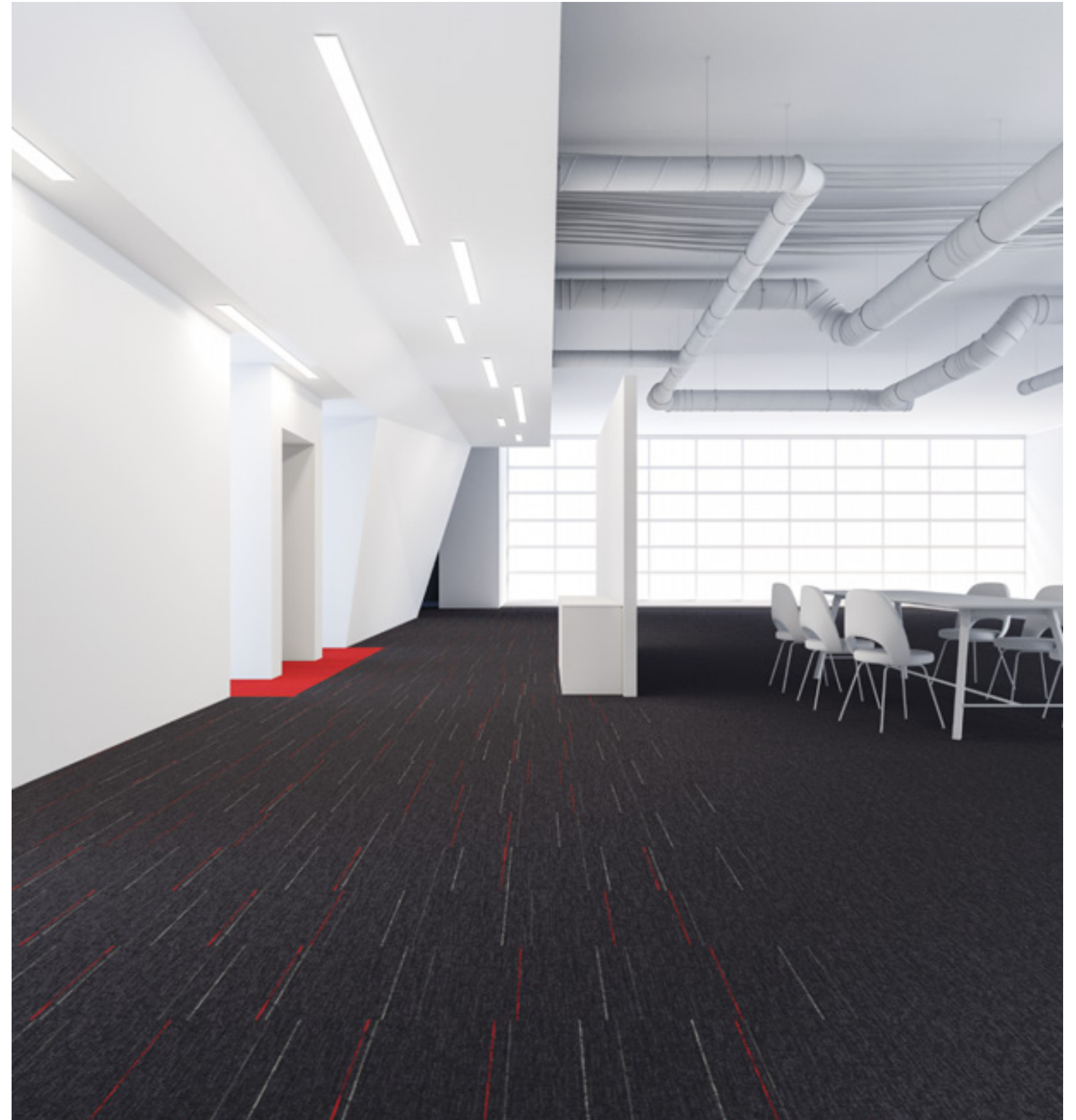
AE312 IRON/ACCENT \$ AE310 IRON \$ ON LINE LAGOON \$\$\$



AE312 FOG/ACCENT \$ AE310 FOG \$ ON LINE LIME \$\$\$



PRIMARY STITCH SERPENTINE/ACCENT \$ SEW STRAIGHT SERPENTINE \$
VIVA COLORES AZUL VERDOSO \$\$

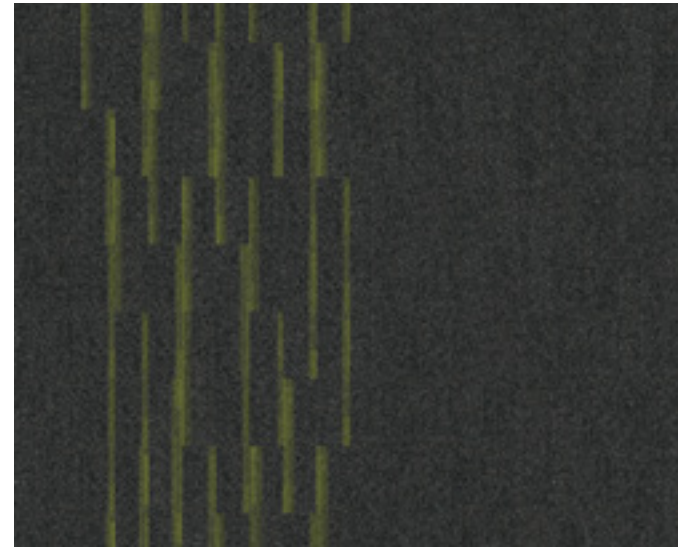


UR304 CHARCOAL/RED \$\$\$ UR303 CHARCOAL \$\$\$ ON LINE POPPY \$\$\$

Define the Runway

Many paths converge into one when traffic flows. The floor can help your company move along in more ways than one. Pattern shifts reveal where you walk and where you stand.

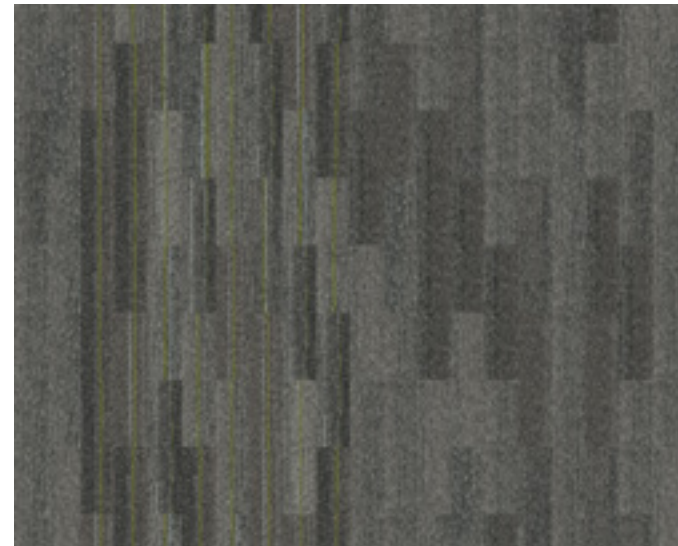
[interface.com/pop6](https://www.interface.com/pop6)



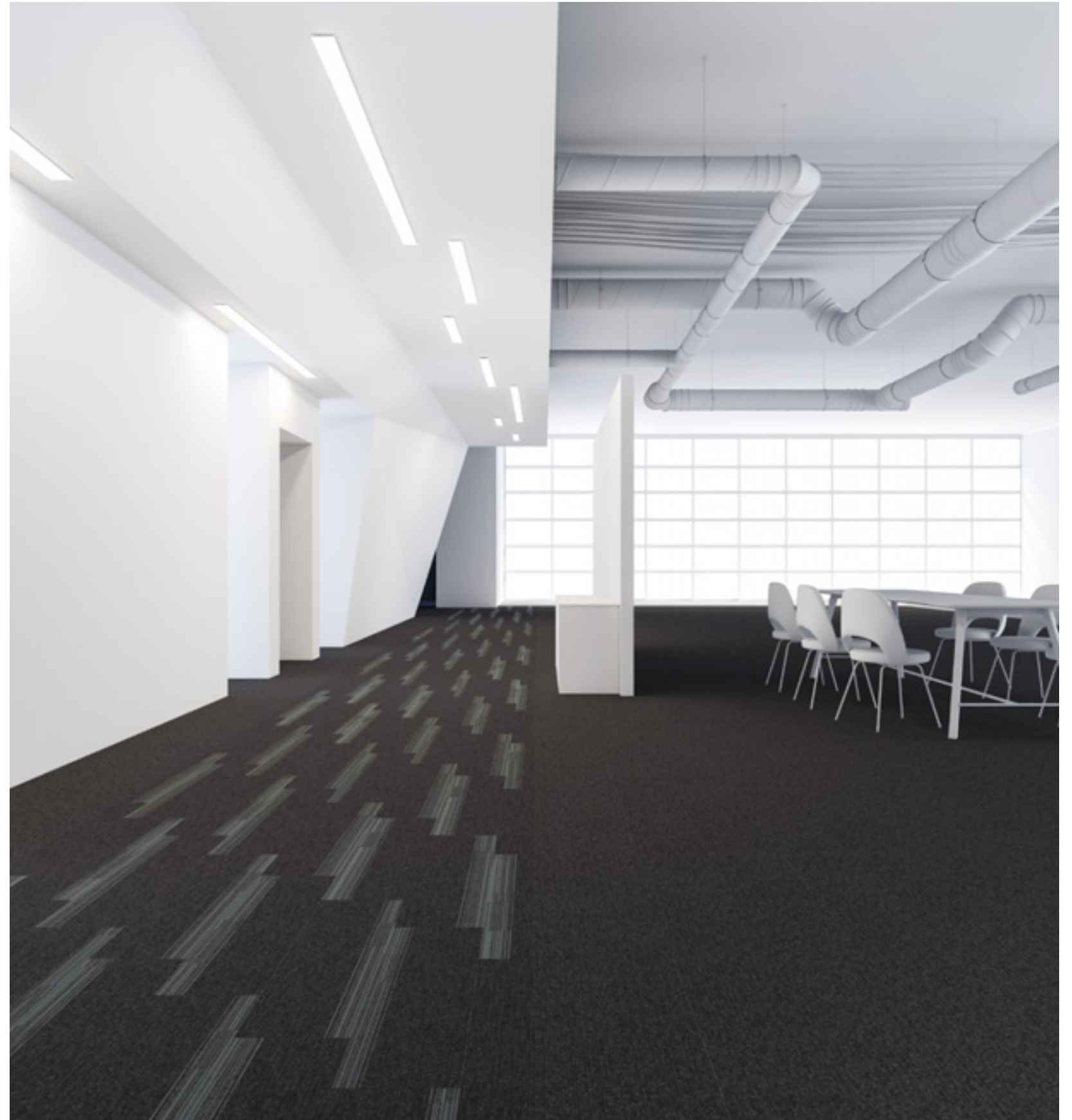
OFF LINE PEPPER/LIME \$\$\$ ON LINE PEPPER \$\$\$



SL930 BLACK FADE \$\$\$ ON LINE INK \$\$\$



GROUND WAVES GRAVEL/COLORS \$ HARMONIZE GRAVEL \$

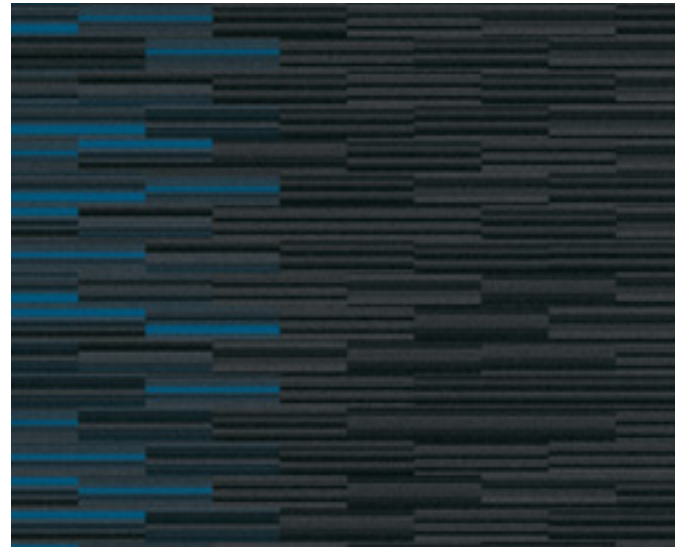


OFF LINE PEPPER/CLOUD \$\$\$ ON LINE PEPPER \$\$\$

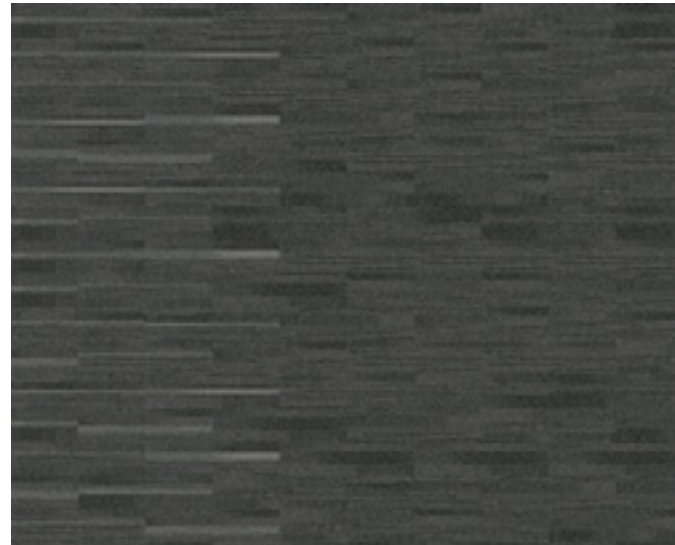
Transition on the Edge

A subtle color invites, like a blue lake rising up out of the trees. Showing where it's okay to go, an invitation to public space, it's one way to use a floor.

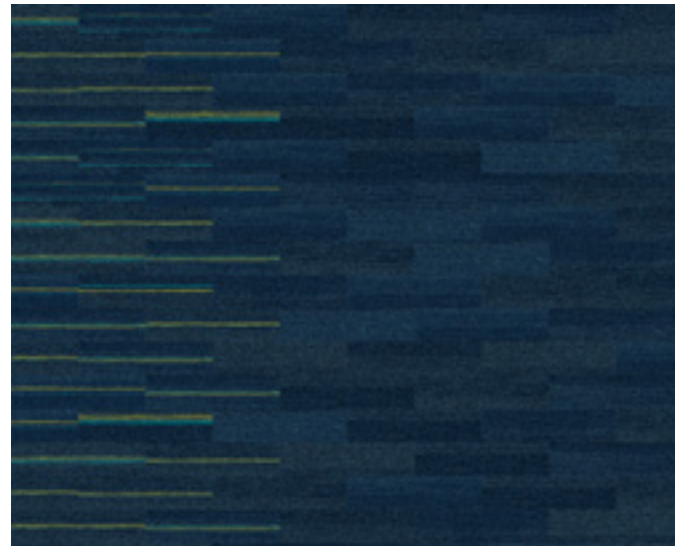
[interface.com/pop7](https://www.interface.com/pop7)



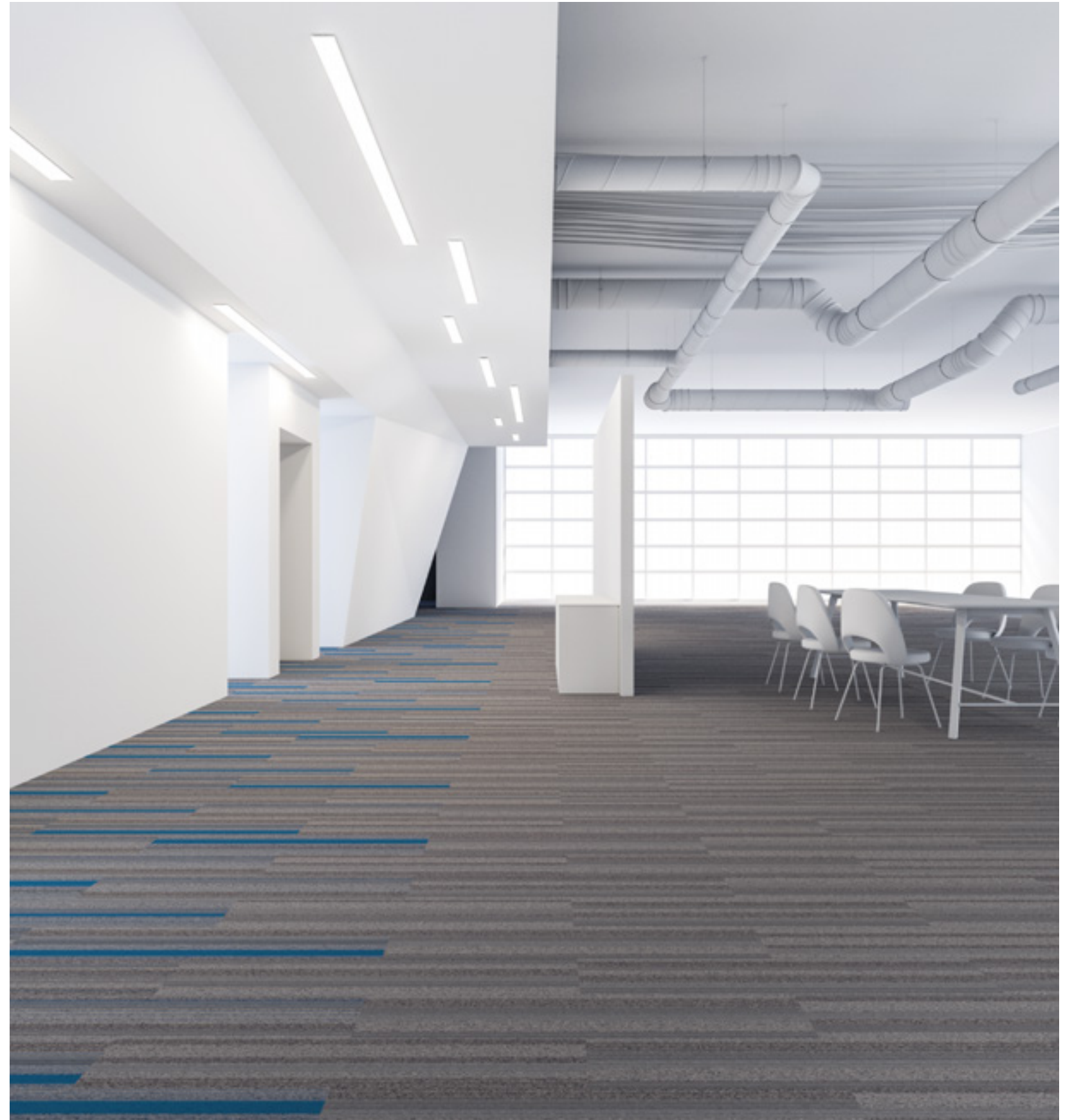
SS218 PASSAGEWAY/LAGUNA \$ SS217 PASSAGEWAY \$



TRIO STEEL/GRANITE \$\$\$ DUO GRANITE \$\$\$



GROUND WAVES COBALT/COLORS \$ HARMONIZE COBALT \$

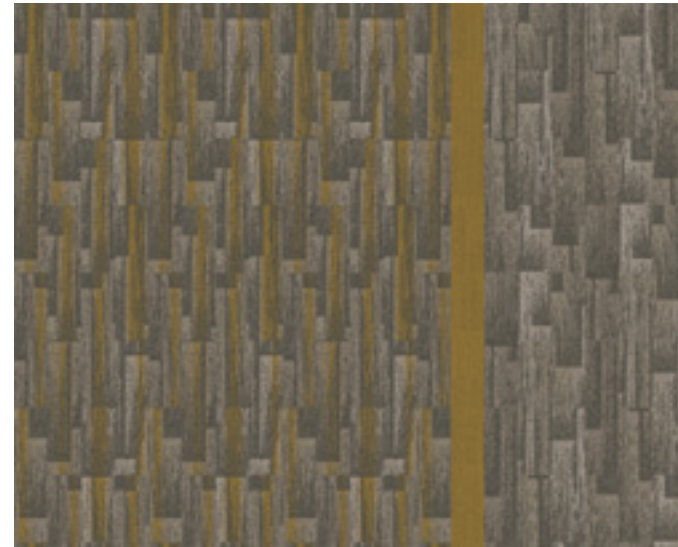


SS218 CROSSROAD/LAGUNA \$ SS217 CROSSROAD \$

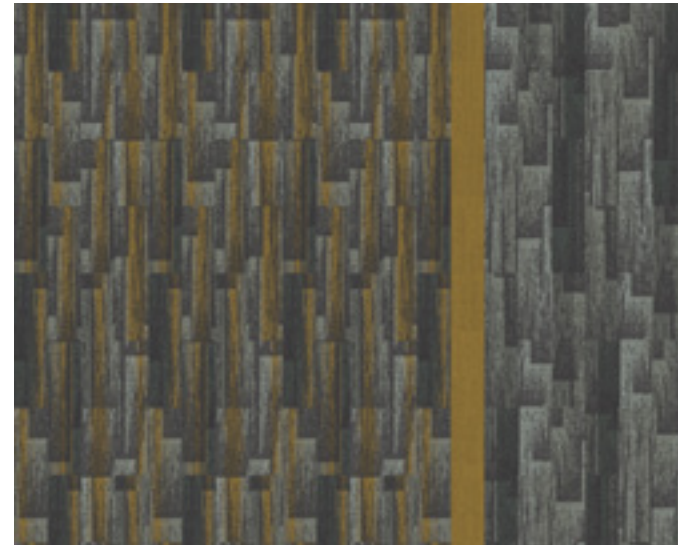
People Mover

A hint of white water quickens the step.
A simple pattern with slightly higher contrast
suggests movement and encouragement to keep
going. Don't stop now, you're nearly there.

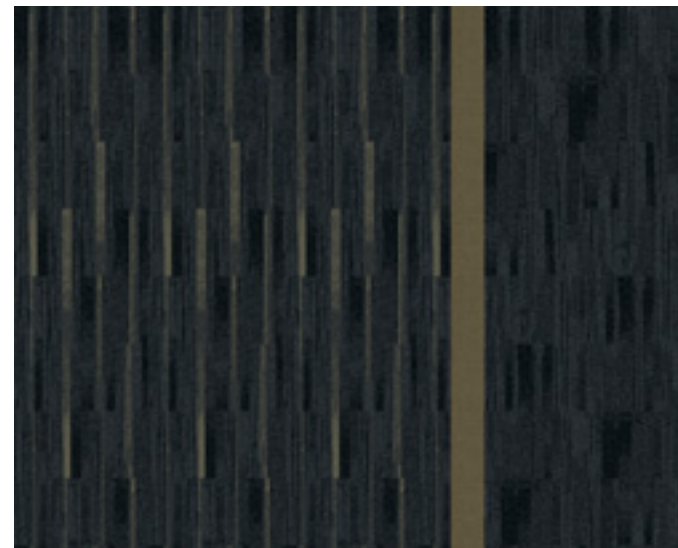
[interface.com/pop8](https://www.interface.com/pop8)



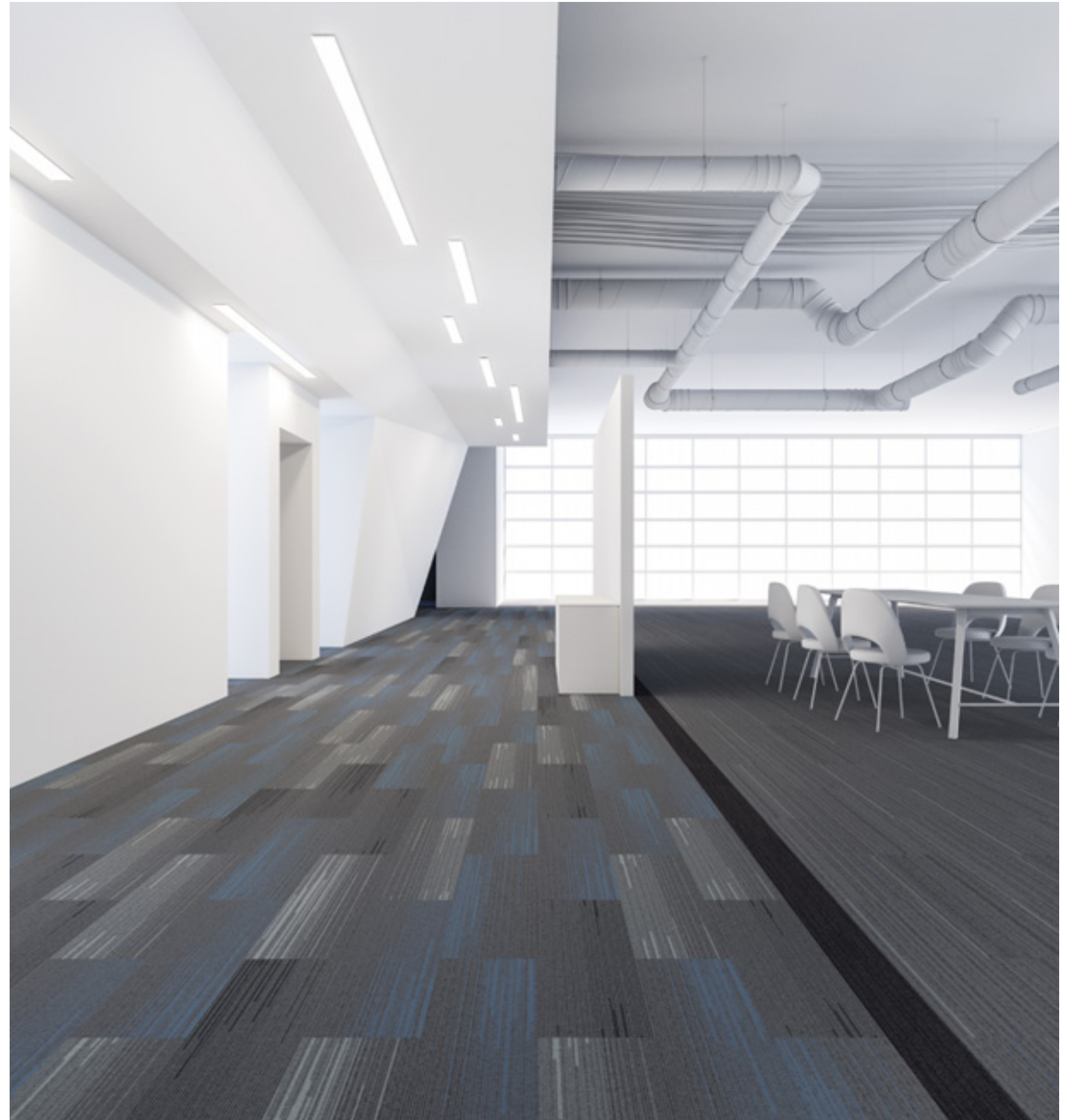
AE313 FOG CITRUS \$ AE311 FOG \$ ON LINE MUSTARD \$\$\$



AE313 IRON PRAIRIE \$ AE311 IRON \$ ON LINE MUSTARD \$\$\$



TRIO OLIVE/CHARCOAL \$\$\$ DUO CHARCOAL \$\$\$ VIVA COLORES SALVIA \$\$

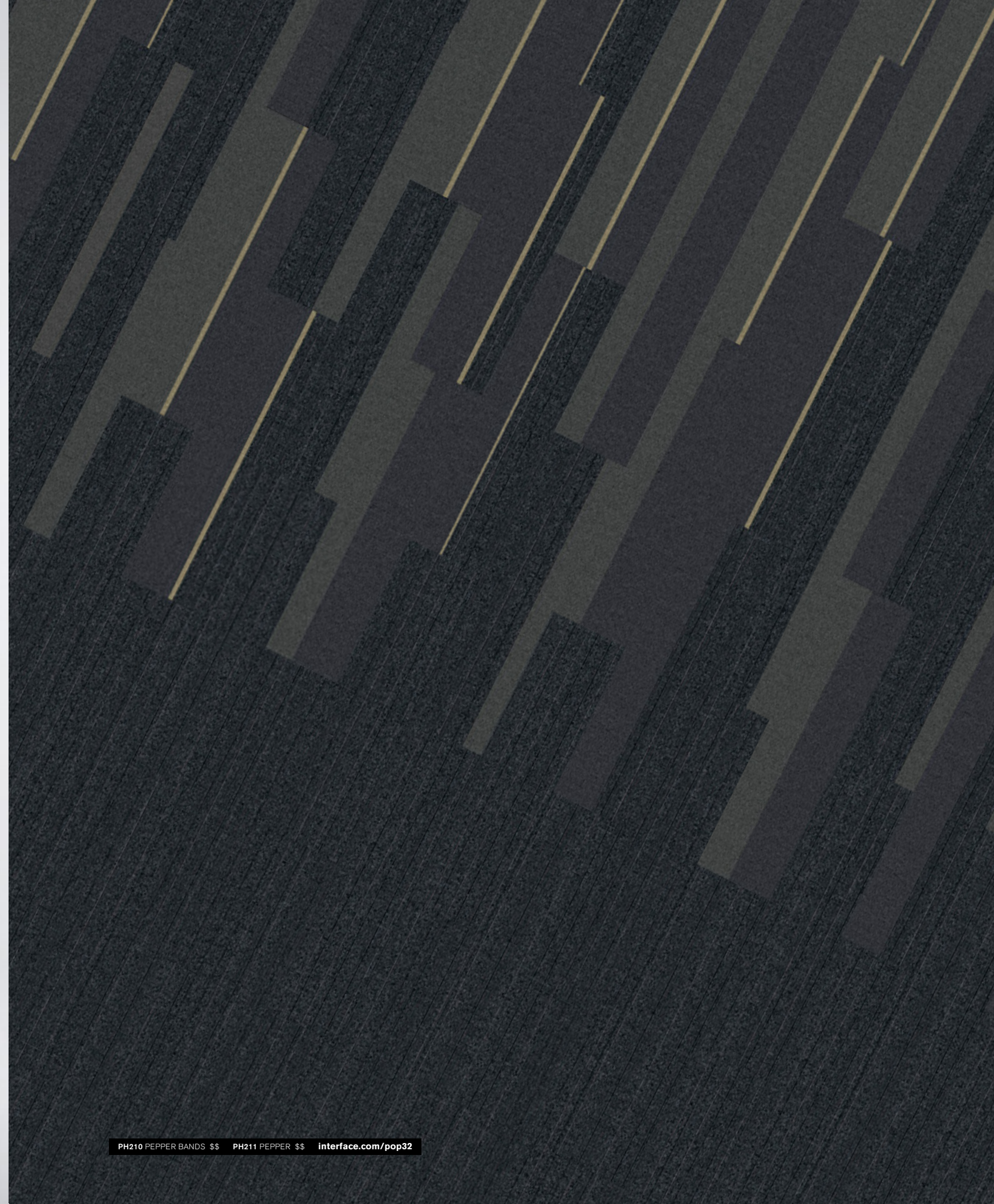


SL930 GRAPHITE FADE \$\$\$ SL920 GRAPHITE LINE \$\$\$ ON LINE INK \$\$\$



Navigate with confidence

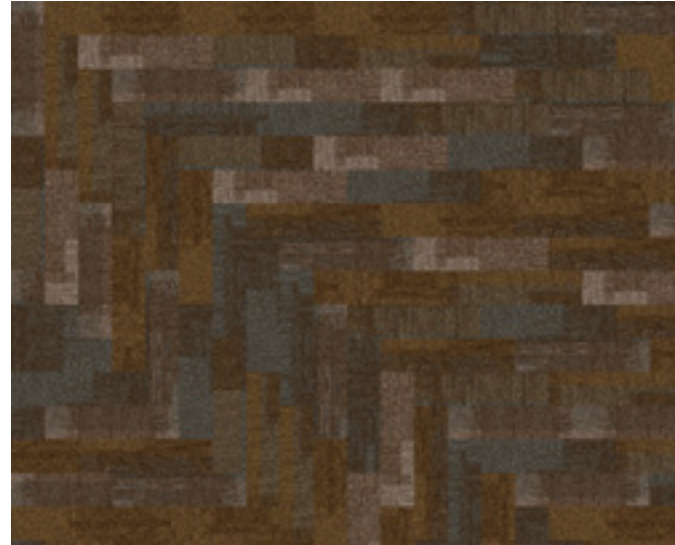
Decisions



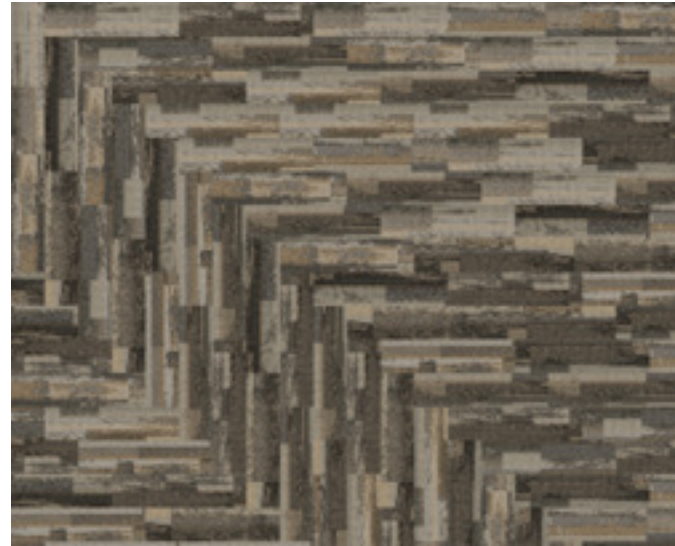
Walk This Way

The floor told me how to get there: First a left, then a right, etc. It also suggested a bounce in my step. A company can define active and passive spaces, and even show how to get there. Linear or whimsical floor patterns speak volumes.

[interface.com/pop9](https://www.interface.com/pop9)



VERTICALS CREST \$\$



RECLAIM COTTAGE TAUPE \$\$\$



RECLAIM AGED BROWN \$\$\$

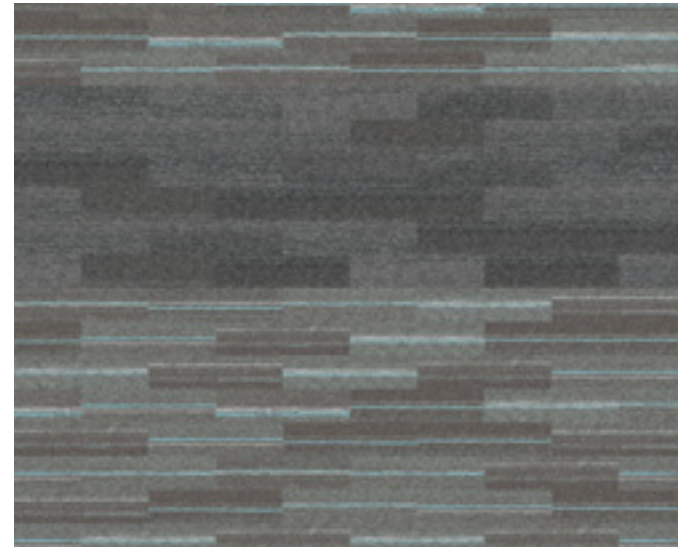


RECLAIM ANTIQUE GREY \$\$\$ ON LINE MUSTARD \$\$\$

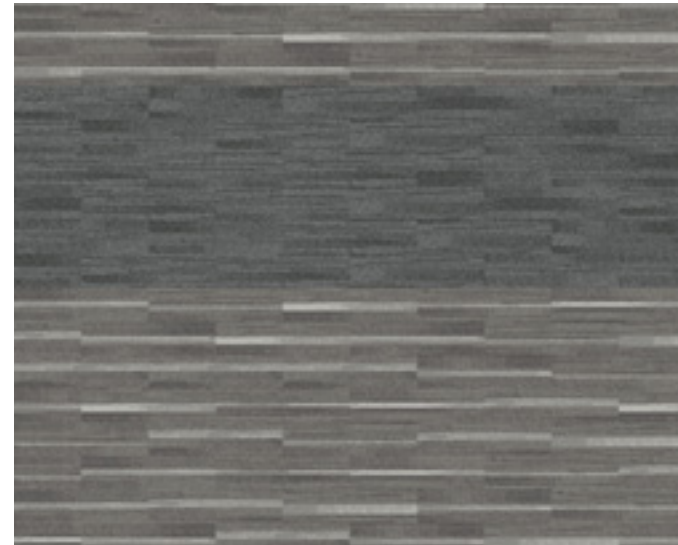
Delineate Space

Here or there, this place or that? Suggest fluid or solid, movement or stasis, loose or formal meeting spaces. With confidence. At a glance.

[interface.com/pop10](https://www.interface.com/pop10)



GROUND WAVES PEWTER/COLORS \$ HARMONIZE GRAVEL \$



TRIO GRAY/STONE \$\$\$ DUO GRANITE \$\$\$



AE310 IRON \$ SL910 NICKEL \$\$\$



HARMONIZE GRAVEL \$ GROUND WAVES GRAVEL COLORS \$ HN830 KIWI \$\$\$\$

Highlight a Path

Sometimes a direct approach is what's needed. Follow the hallway to the end, can't miss it. Color can be a cue for where to go, something easy to recognize. How important is this place? Even subtle color catches the eye, facilitates directions.

[interface.com/pop11](https://www.interface.com/pop11)



WALK THE PLANK HICKORY \$\$\$ SHIVER ME TIMBERS BEECH \$\$



WALK THE PLANK SYCAMORE \$\$\$ SHIVER ME TIMBERS CYPRUS \$\$



WALK THE PLANK IRONWOOD \$\$\$ SHIVER ME TIMBERS SYCAMORE \$\$

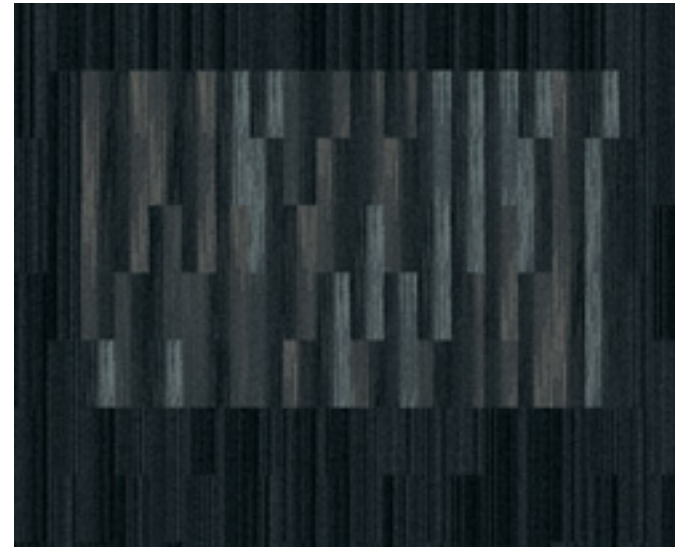


WALK THE PLANK BEECH \$\$\$ SHIVER ME TIMBERS CYPRUS \$\$

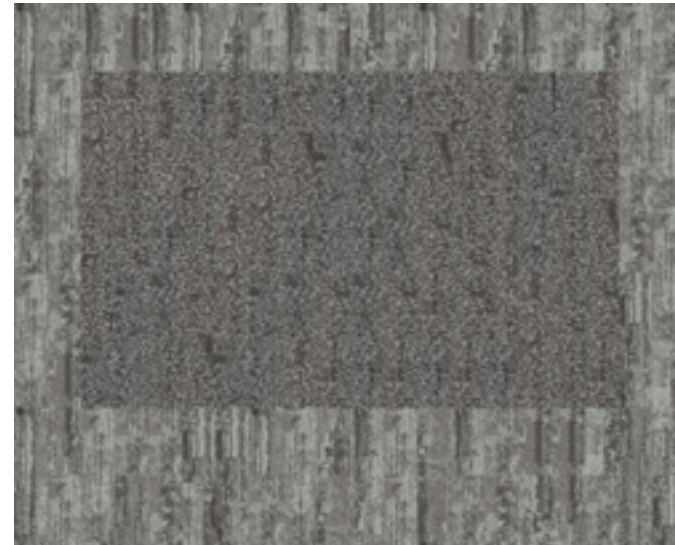
Collaborate

How many spaces might a company need? The floors can designate place. Do this here. Put the table and chairs over there. Set semi-private zones as well as spaces wide open and clearly meant for everyone. Lead the way, even activate a dead-zone.

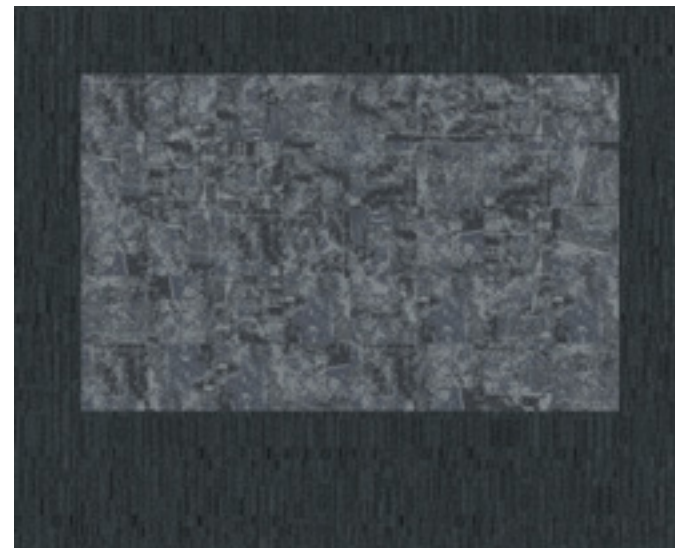
interface.com/pop12



SL930 BLACK FADE \$\$\$ SL910 BLACK \$\$\$



HN840 NICKEL \$\$\$\$ HN810 NICKEL \$\$\$\$



B601 BLACK SEA \$\$\$\$ B702 BLACK SEA \$\$\$



UR101 GRANITE/LICHEN \$\$\$\$ UR102 GRANITE \$\$\$\$ UR501 GRANITE \$\$\$\$



Celebrate the arrival

Destinations



Differentiate

One element clearly speaks volumes. Go here, don't go here. If a line were to form, this might be a good place to stand. A bold and simple cue to make a statement.

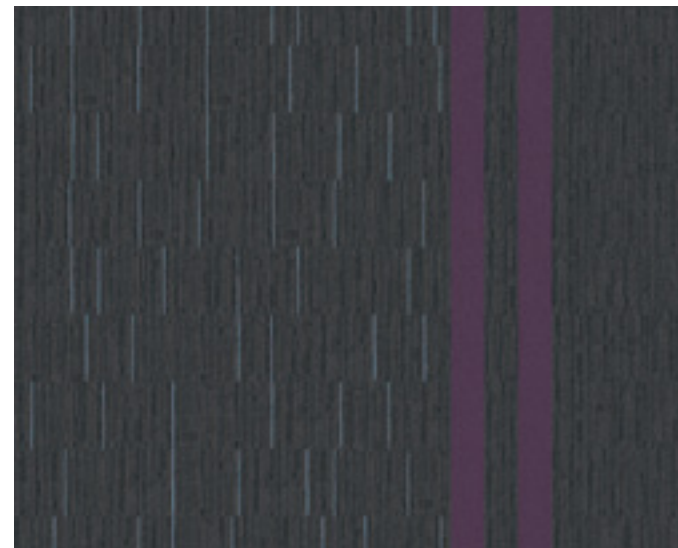
[interface.com/pop13](https://www.interface.com/pop13)



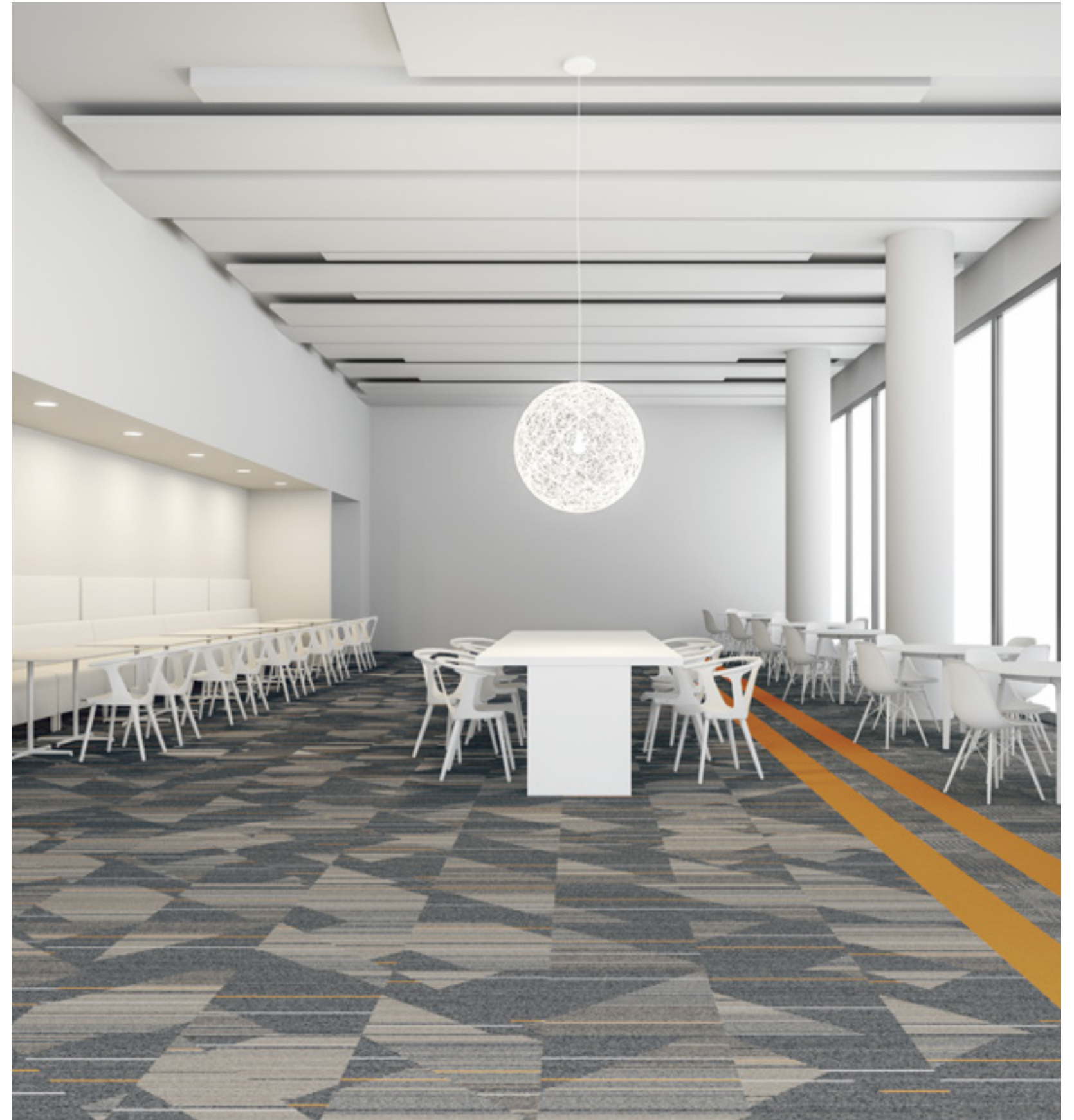
DETOURS STEEL \$ VIVA COLORES GRIS PARDO \$\$ CT101 STEEL \$\$



DETOURS ONYX \$ VIVA COLORES ROJO \$\$ CT101 ONYX \$\$



ALLITERATION GRAPHITE/LILAC \$\$\$ VIVA COLORES AMATISTA \$\$
PALINDROME GRAPHITE \$\$\$

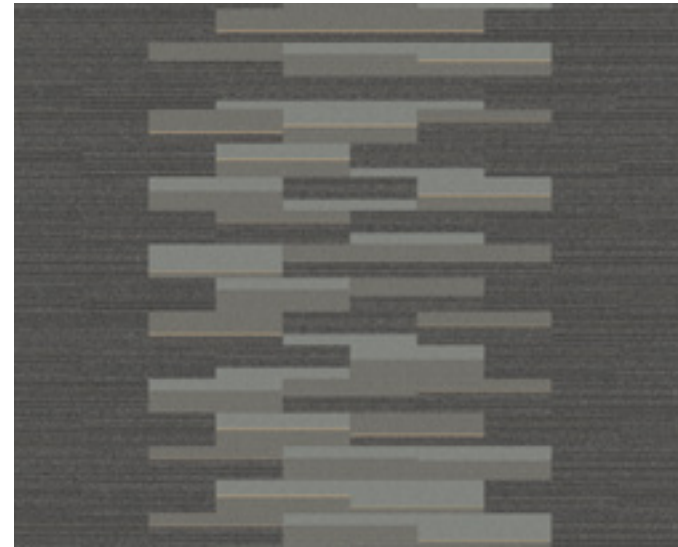


DETOURS STEEL \$ VIVA COLORES NARANJA \$\$ CT101 STEEL \$\$

Suggest Protocol

An invitation to the table couldn't be simpler. Alternating colors move you inside where choices await, different spaces for different needs. The floor directs movement; you direct the floor.

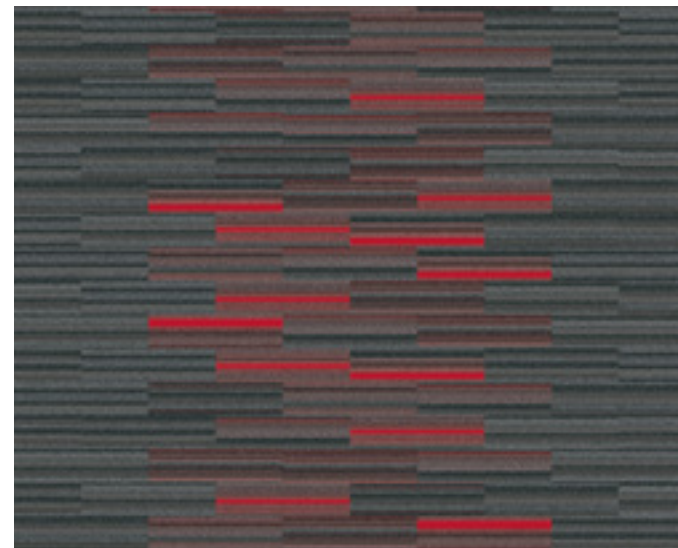
interface.com/pop14



PH210 DUSK BANDS \$\$ PH211 DUSK \$\$



PH210 ONYX BANDS \$\$ PH211 ONYX \$\$



SS218 ALLEY/ROJO \$ SS217 ALLEY \$

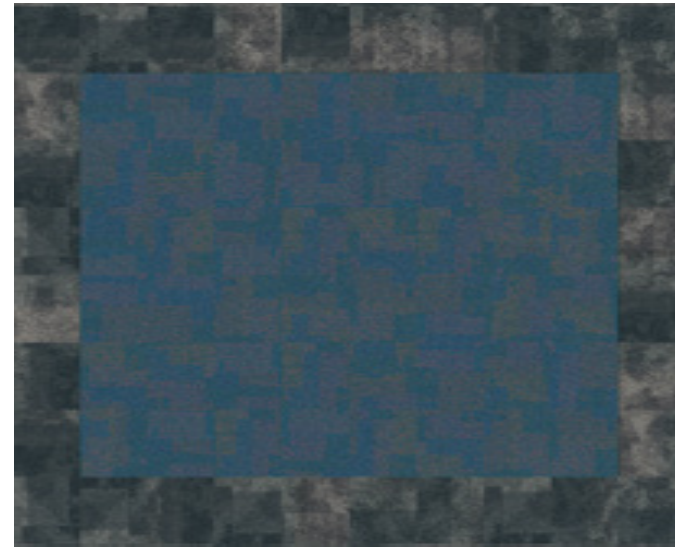


PH210 PEPPER BANDS \$\$ PH211 PEPPER \$\$

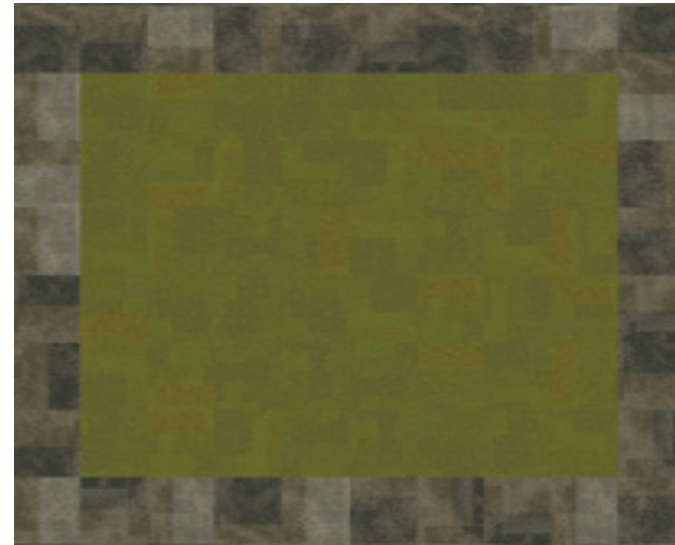
Highlight Space

This floor says, Hello! Sit here for communal space. It's a bit brighter, higher profile, an inviting energy to it. Off to the side fades to neutral, semi-private conversations, out of the spotlight. Intuitively navigated.

interface.com/pop15



EXPOSED MILL TOWN \$\$ CUBIC COLOURS BLUE LAGOON \$



EXPOSED IRON WORKS \$\$ CUBIC COLOURS GREEN \$



EXPOSED BRICK YARD \$\$ TO SCALE DRAWINGS \$\$

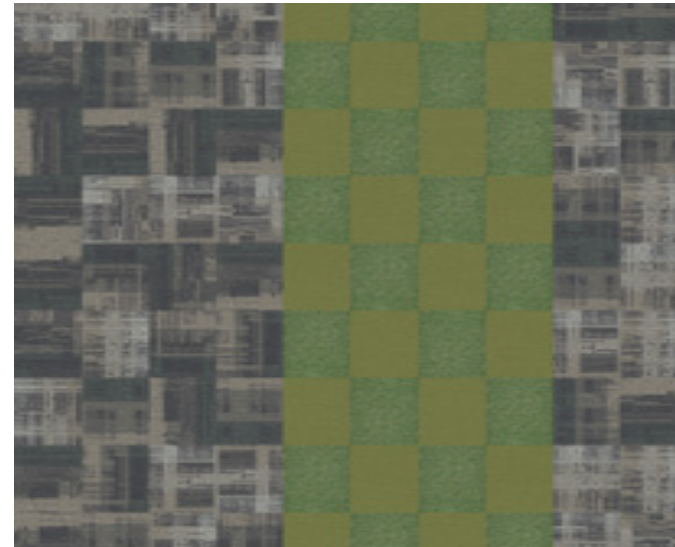


EXPOSED MILL TOWN \$\$ CUBIC COLOURS GREEN \$

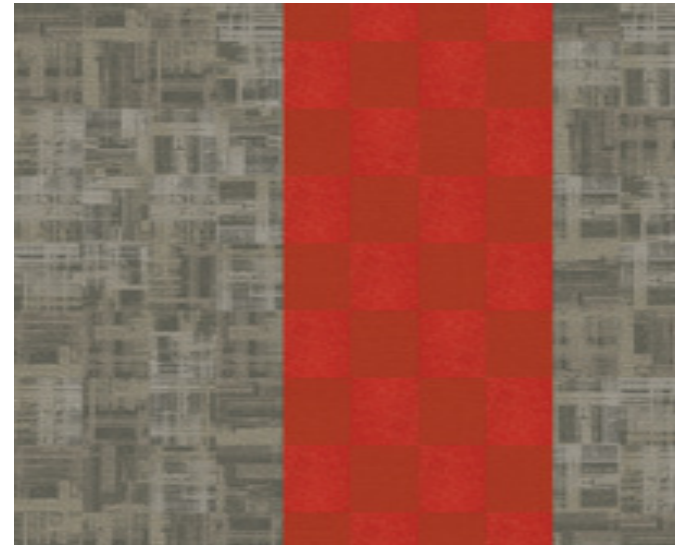
Define Protocol

How could you be more clear? This must not be the way inside. Bright colors and patterns ask you to take notice. What's happening here? What's that you say? This is the way I should go? The protocol here is obvious.

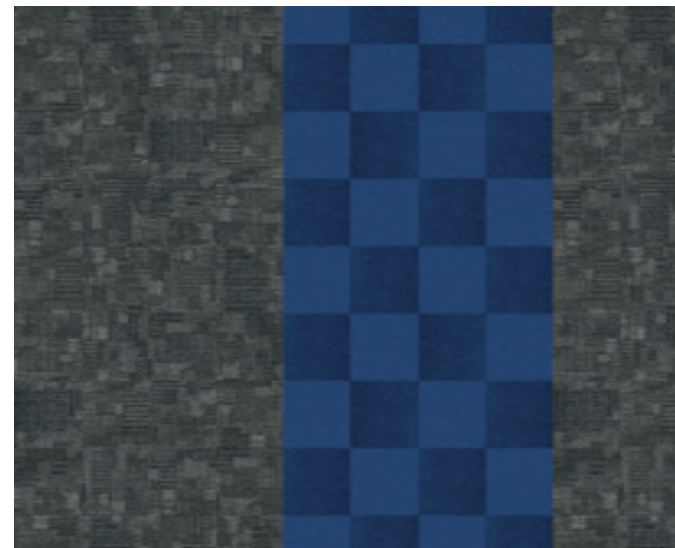
interface.com/pop16



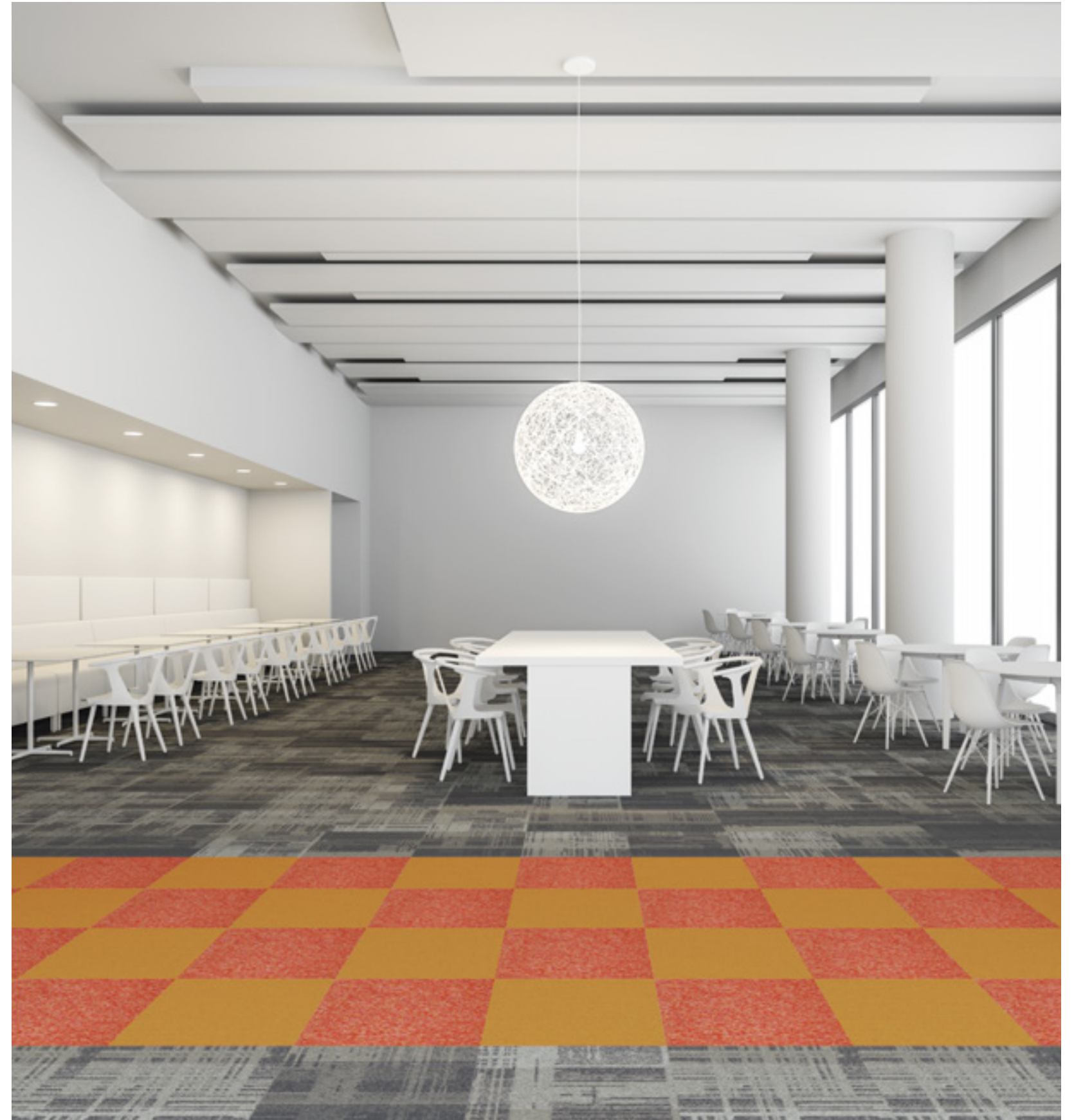
AE310 IRON \$ VIVA COLORES VERDE PRIMAVERA \$\$ SUPER FLOR PRIMAVERA \$\$\$\$



AE310 FOG \$ VIVA COLORES MANDARINA \$\$ SUPER FLOR PACIFIC SUNSET \$\$\$\$



CT101 SLATE \$\$ VIVA COLORES ZAFIRO \$\$ SUPER FLOR OCEANUS \$\$\$\$



AE310 IRON \$ SUPER FLOR PACIFIC SUNSET \$\$\$\$ VIVA COLORES NARANJA \$\$\$

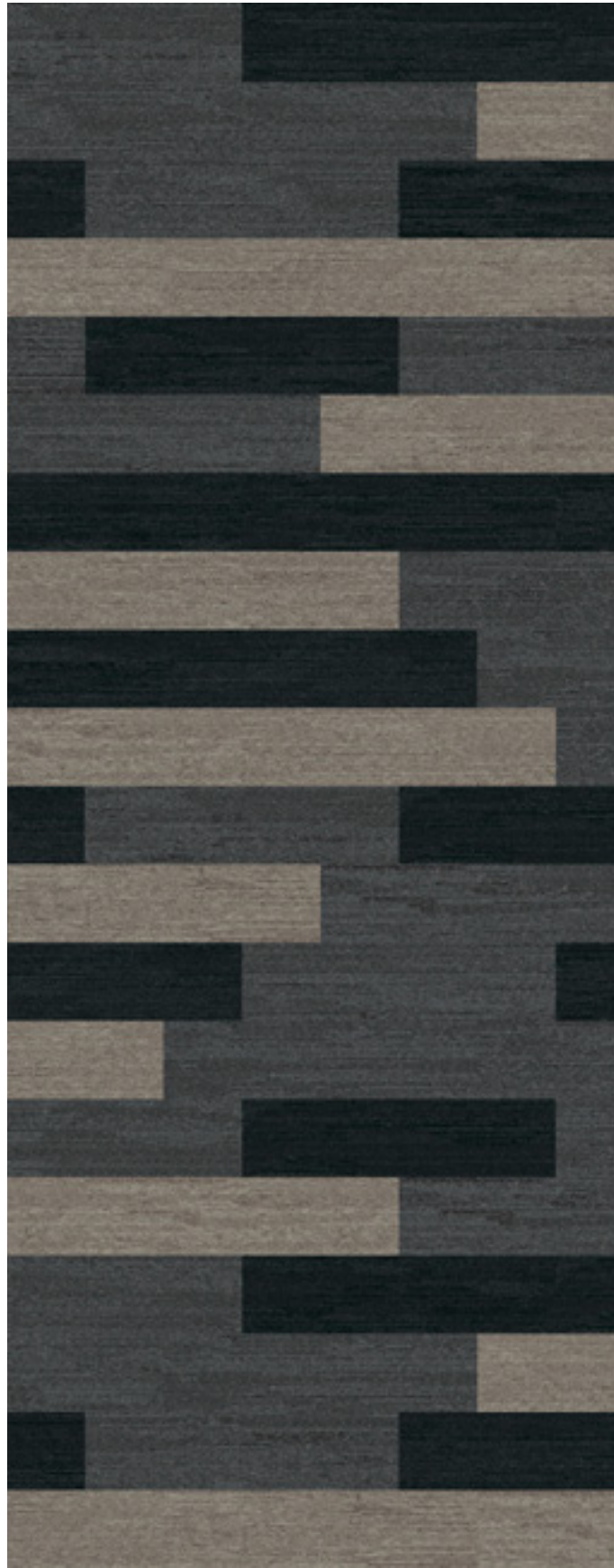


Show the way

More ideas

Want more? Here are extra places to start, build on, and share. If the floor isn't right, you can't go on. Favorite styles, colors, and patterns are ready to go so you can get them fast. At many different price points, you choose.

Create and find more floors at interface.com/pop



interface.com/pop17
UR501 GRANITE \$\$\$\$
UR501 CHARCOAL \$\$\$\$
UR501 ASH \$\$\$\$



interface.com/pop18
VERTICALS CREST \$\$
HARMONIZE MESQUITE \$



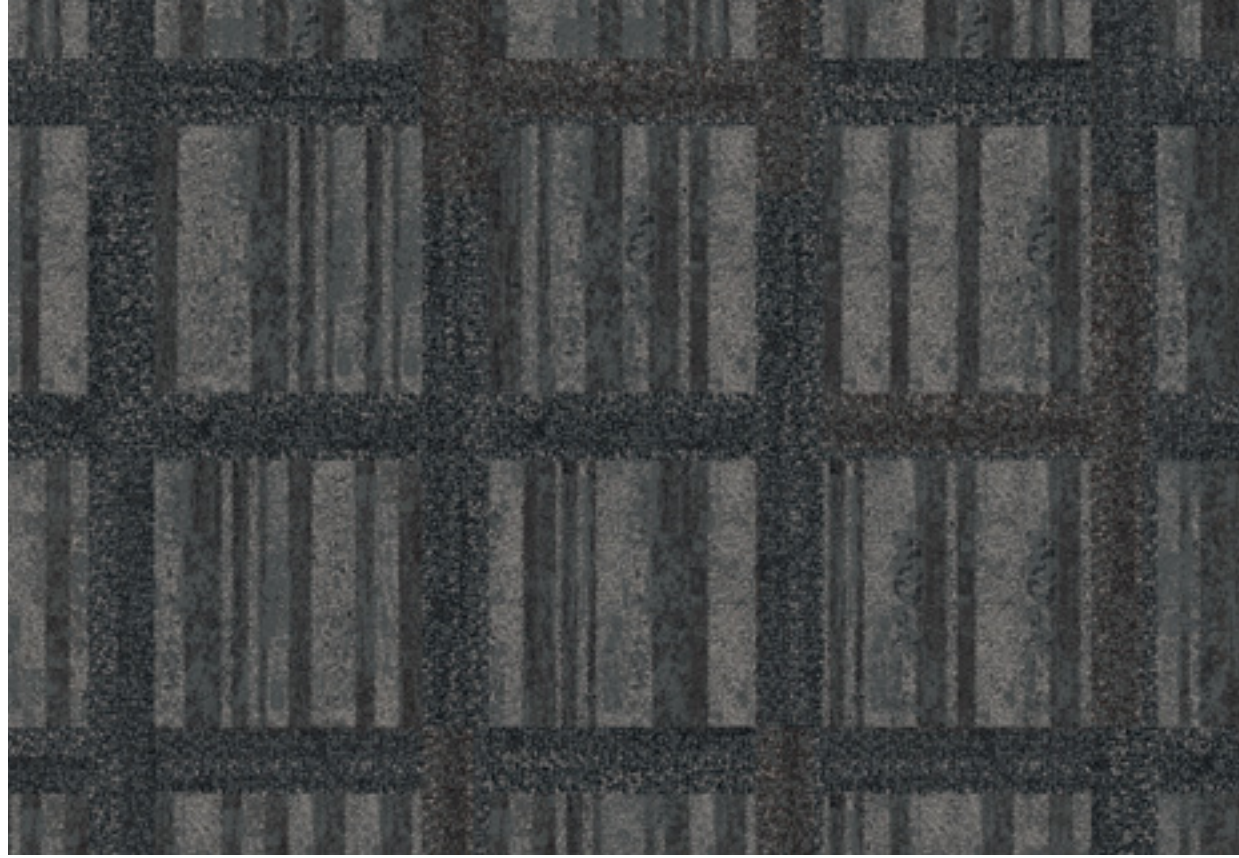
interface.com/pop19
SS218 ALLEY/ROJO \$
SS217 ALLEY \$
VIVA COLORES ROJO \$\$



interface.com/pop20
AE311 IRON \$
AE311 FOG \$



interface.com/pop21
PH210 DUSK BANDS \$\$



interface.com/pop22
HN840 SLATE \$\$\$\$
HN810 SLATE \$\$\$\$



interface.com/pop23
RECLAIM COTTAGE TAUPE \$\$\$
RECLAIM AGED BROWN \$\$\$



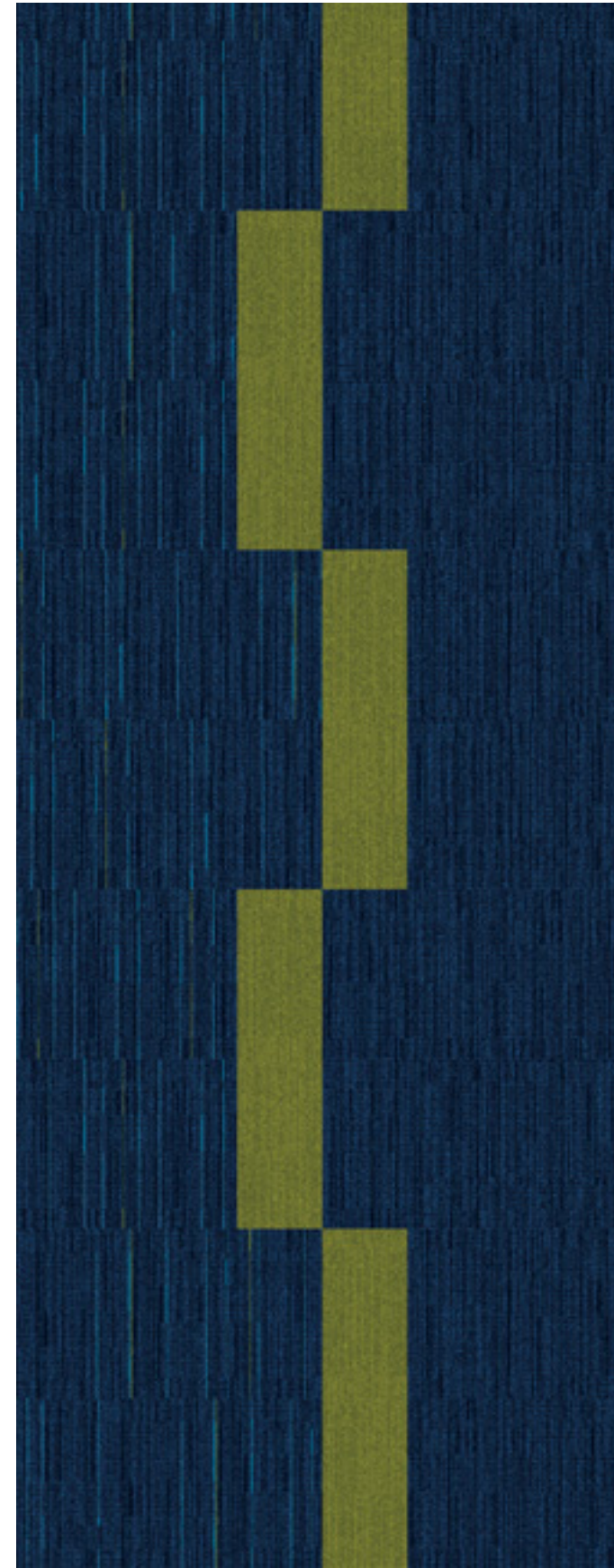
interface.com/pop24
DUO CHARCOAL \$\$\$
DUO GRANITE \$\$\$
DUO STONE \$\$\$



interface.com/pop25
EXPOSED IRON WORKS \$\$
EXPOSED MILL TOWN \$\$



interface.com/pop26
ON LINE LAGOON \$\$\$
STRAIGHT EDGE SLATE \$



interface.com/pop27
ON LINE LIME \$\$\$
ALLITERATION INDIGO/ASPARAGUS \$\$\$
PALINDROME INDIGO \$\$\$



interface.com/pop28
HARMONIZE GULL \$
HARMONIZE DRIFTWOOD \$
AE310 FOG \$
VIVA COLORES ESMERALDA \$\$

Design on time

Flooring has changed. We expect more, want the details to add up to something, take them somewhere. Our floor design starters anticipate these needs in creative, easy ways. The future is happening now. Or possibly very soon. It's up to you.

PRODUCT	PRICE	PAGE
AE310	\$	18, 32, 48, 49, 59
AE311	\$	24, 55
AE312	\$	18
AE313	\$	24
ALLITERATION™	\$\$\$	12, 42, 59
B601	\$\$\$\$	8, 36
B602	\$\$\$\$	8
B603	\$\$\$\$	8
B702	\$\$\$	36
CT101	\$\$	41, 42, 43, 48
CUBIC COLOURS™	\$	46, 47
DETOURS™	\$	41, 42, 43
DRIFTWOOD™	\$\$	6, 7
DUO™	\$\$\$	11, 22, 24, 32, 57
EXPOSED™	\$\$	46, 47, 58
GROUND WAVES™	\$	5, 20, 22, 32, 33
HARMONIZE™	\$	5, 20, 22, 32, 33, 54, 59
HN810	\$\$\$\$	8, 9, 36, 56
HN830	\$\$\$\$	33
HN840	\$\$\$\$	8, 9, 36, 56
HN850	\$\$\$\$	8, 9
OFF LINE™	\$\$\$	10, 17, 20, 21
ON LINE™	\$\$\$	5, 6, 7, 10, 17, 18, 19, 20, 21, 24, 25, 31, 41, 58, 59
PALINDROME™	\$\$\$	42, 59
PH210	\$\$	10, 29, 44, 45, 56
PH211	\$\$	10, 29, 44, 45
PRIMARY STITCH™	\$	18
RECLAIM™	\$\$\$	30, 31, 57
SEW STRAIGHT™	\$	13, 18
SHIVER ME TIMBERS™	\$\$	6, 7, 34, 35
SL910	\$\$\$	6, 32, 36
SL920	\$\$\$	25
SL930	\$\$\$	3, 6, 20, 25, 36
SS217	\$	10, 22, 23, 44, 55
SS218	\$	10, 22, 23, 44, 55
STRAIGHT EDGE™	\$	12, 58
SUPER FLOR™	\$\$\$\$	48, 49
TO SCALE™	\$\$	46
TRIO™	\$\$\$	11, 22, 24, 32
UR101	\$\$\$\$	8, 37
UR102	\$\$\$\$	8, 37
UR103	\$\$\$\$	8
UR303	\$\$\$	19
UR304	\$\$\$	19
UR501	\$\$\$\$	37, 54
VERTICALS™	\$\$	30, 54
VIVA COLORES™	\$\$	12, 13, 18, 24, 42, 43, 48, 49, 55, 59
WALK THE PLANK™	\$\$\$	34, 35