

Department of Medicine

# IHC Service Center

**Boston University School of Medicine**

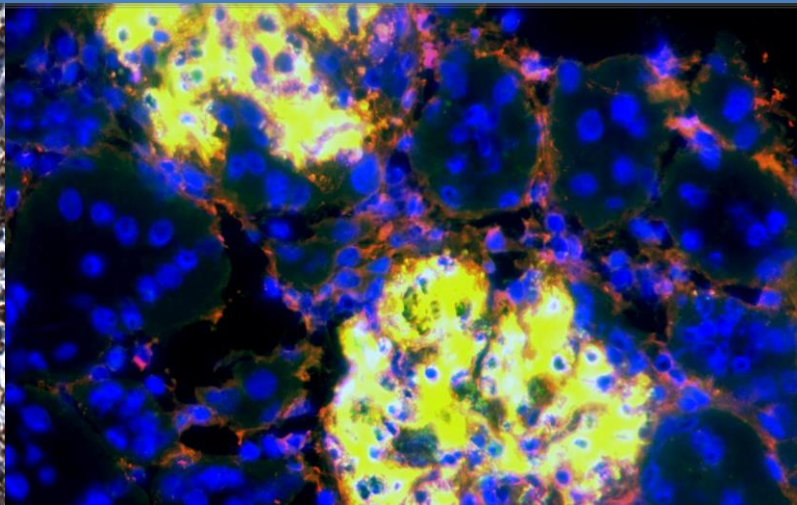
**650 Albany Street,**

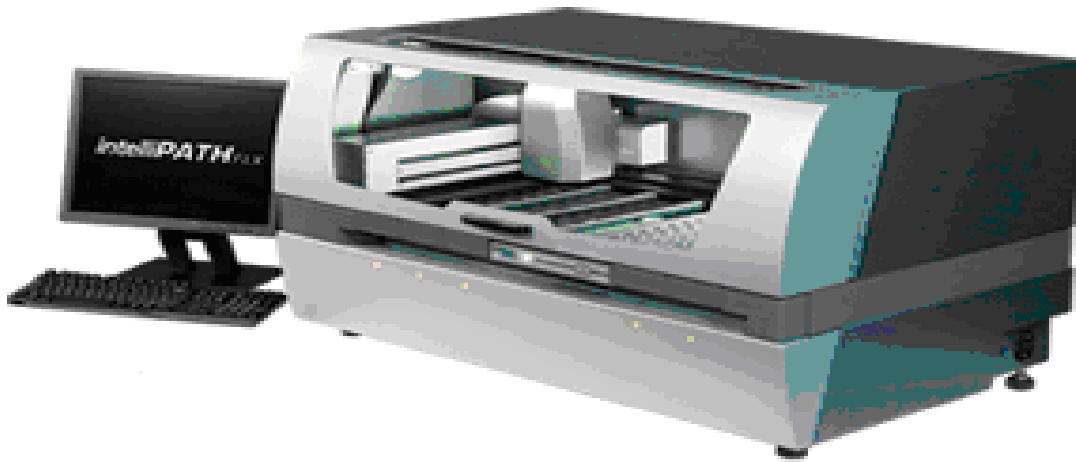
**Room 431, 437, EBRC**

**Boston, MA**

**Phone: 617-638-7003**

**Fax: 617-638-7140**





**We are here to assist you with your  
Immunohistochemistry (IHC)  
experiments**

The Immunohistochemistry (IHC) Service Center at Boston University School of Medicine offers a variety of IHC services for human and animal tissues to biomedical researchers. We provide the most current polymer technology to maximize detection sensitivity and automated staining to guarantee batch-to-batch stability. Our staff has extensive experience working with various tissue types and will walk you through the process to ensure that your samples produce the highest quality result possible. The Center also offers training, consultation. Our service has short turnaround. Contact us to start your IHC experiment.

**Xuemei Zhong, Ph.D.**

*Director and Scientific consultant*

**Natalie Bitar, MPH.**

*Manager and IHC specialist*



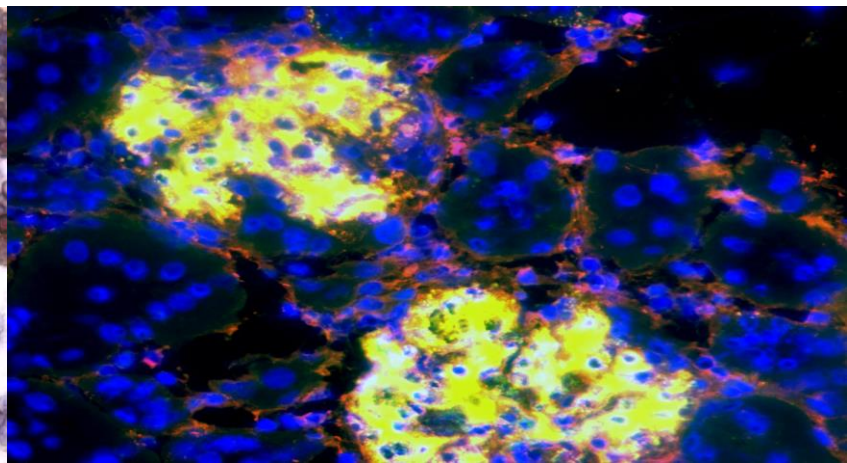
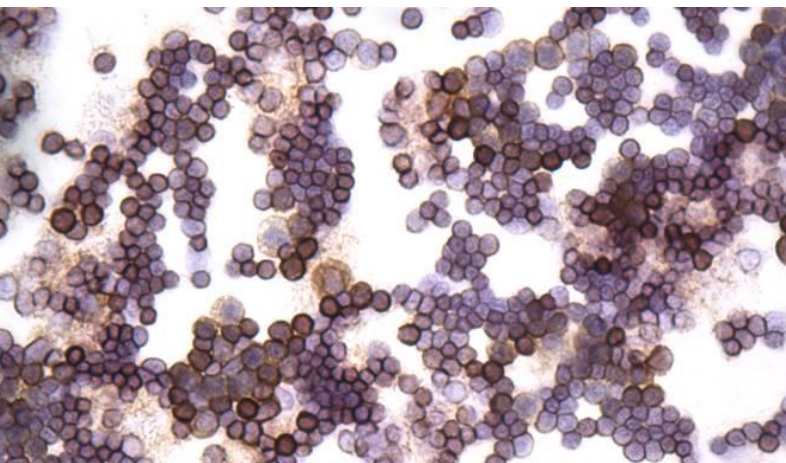


# Immunohistochemistry (IHC) & Immunofluorescence (IF) Staining

The Immunohistochemistry (IHC) service center is equipped with an *IntelliPATH Autostainer* that can perform automated IHC or IF staining of up to 50 different slides simultaneously. The total flexibility of this stainer provides a fast tool to optimize new antibodies and tissues in as short as one day. Multiple users can perform different stainings at the same

## Immunohistochemistry (IHC) and Immunofluorescent (IF) Staining

Our Immunohistochemistry staining services tailored to the unique needs of researchers using *IntelliPATH Autostainer*. The Center's staining service allows investigators to visualize the expression levels and distribution of specific antigens within cells and tissues. The facility provides rapid and same-day IHC and IF staining. The Center provides IHC and IF staining with chromogenic or fluorescent markers for Formalin-Fixed Paraffin-Embedded (FFPE) or frozen samples.



# H & E Staining

## H&E Staining (In development)

The Center is now providing H&E staining for Formalin-Fixed Paraffin-Embedded (FFPE) or frozen samples.

H&E Staining is a useful technology to visualize and examine tissue structure and cell morphology.

- **Never did Immunohistochemistry (IHC), Immunofluorescent (IF) or H & E staining before? We can help!**
- **Tired of manually staining gazillions of slides? We can help!**
- **We would like to help you speed up your research with automated staining.**
- **We would like to help you speed up your research with automated staining.**

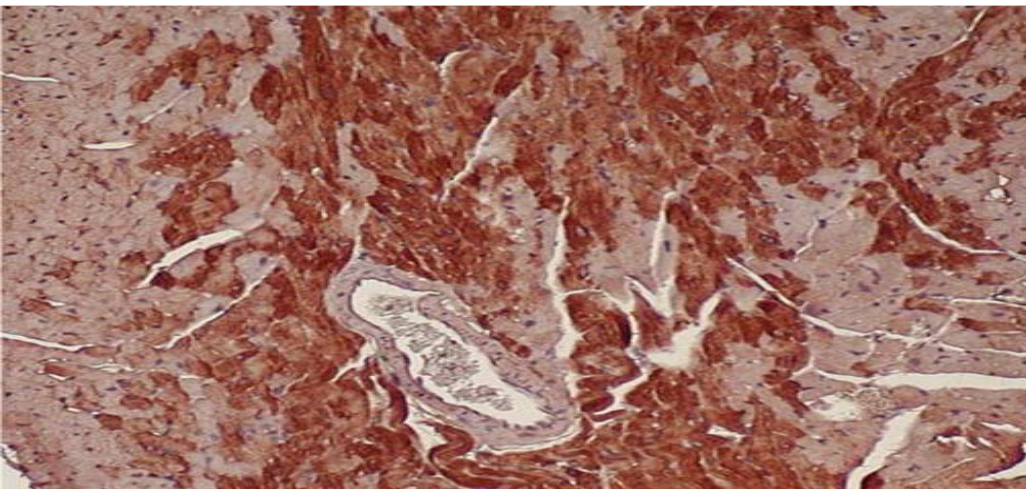


# Tissue Processing

## Tissue Processing Center

The Center provides automatic tissue processing using *Shandon Hypercenter XP*, which is a computer-controlled tissue processor with automated fixation, dehydration, cleaning and paraffin infiltration features for tissue samples. The automated process ensures consistency between experiments

- **High-quality histology result begins with good tissue processing.**
- **The ultimate outcome of any staining is determined considerably by the handling of the tissue prior to staining.**

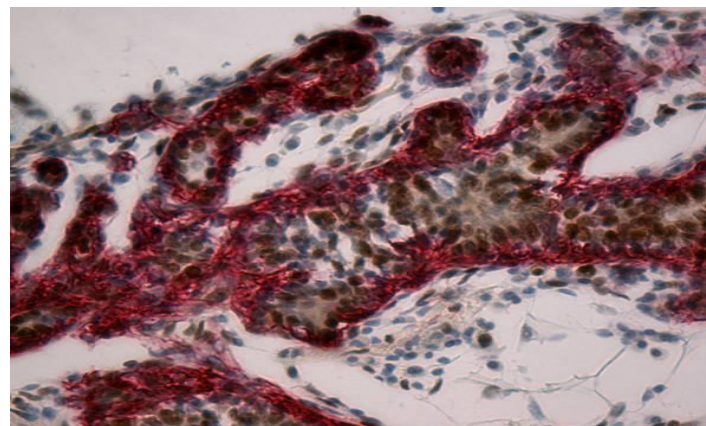


# Embedding



## Embedding Center

Users at our facility can embed tissue with paraffin using the *Shandon Embedding Center*. The Core facility offers training and the use of the Embedding Center for tissue processor users.





# Microtome Center



## Microtome Center

Users can prepare tissue sections at the Core facility using Leica 2035 Microtome, slide warmer, and water-bath. We provide training and assistance with microtomy. Users need to bring their own blades and slides.

- **The Core allows the users to section their samples on their own time at the specified tissue size that required by their research study.**
- **Tired of waiting for a long time to get results back? We can help!**

# Antigen Retrieval System

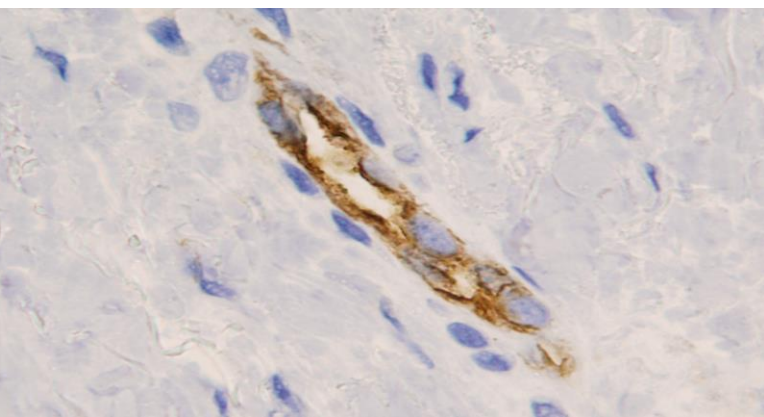


## Antigen Retrieval

The Core provides Heat-Induced Epitope Retrieval (HIER) using *Biocare Decloaking Chamber* or, Proteolytic Induced Epitope Retrieval (PIER).

We provide consultation on experiment design to optimize antigen retrieval process and maximize sensitivity and specificity of your IHC/IF staining.

- **Consultation available for the optimization of new antibodies and/or troubleshooting.**





# Experiment Designing Consultation and Pricing

When you are staining on the IntelliPATH for the first time or every time you start a new antibody, please schedule a consultation section with Natalie Bitar and Xuemei Zhang to discuss protocol options and to make sure that we have all the reagents needed for your staining (except for primary antibodies, which you need to bring your own).

<b>Service and Instrument Use</b>	<b>Prince for BU main campus and medical school users</b>
Automated <b>tissue processing</b> and paraffin <b>tissue embedding</b>	\$20 (1~45 cassettes) \$40 (46~90 cassettes) \$120 (91+ cassettes)
<b>Microtome sectioning</b> (User cut the tissue section. Price includes the use of microtome, water bath, slides-warmer)	\$5 per hour
<b>Immunohistochemistry (IHC)</b> and <b>Immunoflorescent (IF)</b> staining (Price includes consultation, deparaffinization, antigen retrieving, counter staining. All reagents are included except for primary antibody or user-specific reagent.)	\$24 per slide
<b>Antigen retrieving</b> using Biocare decloaker (Free for users using our IHC and IF services.)	\$20 per run (up to 40 slides)
<b>H&amp;E staining</b>	\$12 per slide
<b>Cryosectioning</b>	\$ 8 per slide