

## **AP Studio Art 2D and Drawing Year One** **Summer Assignments**

- I. Sketchbook**- Take notes for ideas that occur to you while observing and drawing. Think of your sketches as possible studies for more finished works. Some of your sketches may develop into completed drawings as you are working on them over the summer. Use a *variety* of media to sketch with including graphite pencil, Prismacolors, charcoal, ink and crayons. Be experimental and create different marks. **You have 5 sketchbook drawings to do from observation of something or someone.**  
*\* All drawings are expected to be of excellent quality\**

## **II. Major Drawing Projects: Pick TWO from assignments from A-D listed below**

Assignment A: Subject: Still life

Medium: Your choice on drawing paper

Size: 16" x 20"

Work Time: 10 hours

Set up a still life scene. Set it up so that you can draw it over several days. Use an object with water in it, a reflective object, and other items. Take several pictures of the still life from different angles. Pick one angle that you like and create a drawing of it. Make sure to use a full range of tonal changes and do an excellent job with the execution of the drawing.

Assignment B: Subject: Draw your closet and its contents

Medium: Prismacolor pencil or marker on drawing paper

Size: 16" x 20"

Work Time: 10 hours

Draw your closet with its contents showing. Open your closet door and take a minute to observe the structure of it, its contents and the area around it. Pay attention to details and have your door at least 2/3 of the way open so that the stuff inside is visible. Consider an interesting angle.

Assignment C: Portrait Drawing with an interesting angle

Size: 16x20

Medium: Prisma Colored Pencils

Work Time: 10 hours

You are to take several photographs of friends or family members from odd angles. Don't just take normal, happy photos. Include dramatic lighting and angles to set a different mood. You must include a reflection. Don't center the picture. Allow things to run off of the page. Think of interesting ways to view people such as trapped in a box, under glass tables, putting on make-up with a reflection etc. You could even think about drawing the real life in color and reflection in black and white or vice versa.

Assignment D: Abstraction from Realism

Size: 18x24

Medium: Watercolor, Marker, Prismacolor, Pencils and Tape

Work Time: 5-10 hours

Sketch a portrait or a still life in pencil. Use sharpie markers to make lines thick while leaving other lines thin. Tape random lines across the page in different directions. Then take watercolor and color in flat areas of space randomly. Next, take off the tape, erase the pencil lines and use prismacolor colored pencils to finish, or, break down the portrait into simple shapes like a more recognizable Picasso.

## **IV: Paintings: Pick ONE from the assignments listed below**

Assignment E: Small town, rural painting

Size: 18x24 or LARGER

Medium: Acrylic paint, black, white and grey

You can purchase either a craft board from a local craft store or MDF board from Home Depot or Lowe's (they will cut it down for you if you ask). Take a picture of some old city buildings or a rural farmhouse. Print it out on your computer and use high contrast. Create a proportion grid and transfer it to your board (or you can use a projector). Paint thinly in layers and build up your greys. This painting is black and white only. You should have black, white and at least ten shades of grey.

Assignment F: Random Cut & Paint

Size: larger than 18x24

Medium: Acrylic

You may use cardboard to cut out random shapes or a motif. Assemble the shapes and glue them down on a flat piece of cardboard or MDF. Make a fantasy landscape or a cool design or even realistic compilation. Paint it with flat colors, however, think about composition and the principles of design.

Assignment G: Painting from the Impressionist Masters

Size: 18x24 or larger

Medium: Acrylic or oil paints

Look at the artwork of famous Impressionist artists. Pay particular attention to how they use value, create texture and their brush strokes. Observe a landscape in real life. Take a picture of it or sketch it. You will need to turn it in (so keep it). Use the landscape picture to create an impressionistic painting. Make sure to make an emphasis on value and brush strokes.



Student Impressionism style landscape



Student Still life



Student interesting portrait



Student still life abstraction from realism

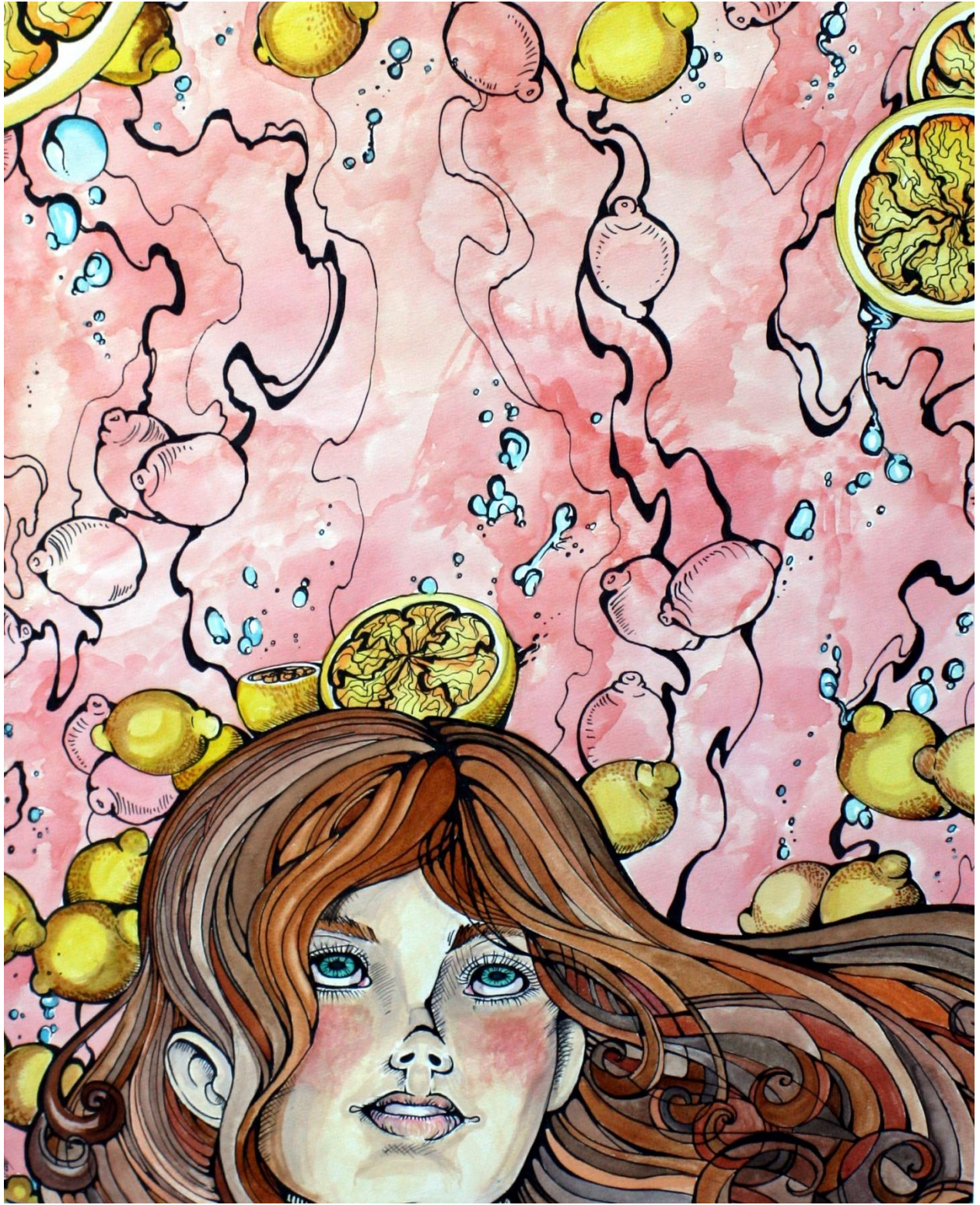


Student portrait with an interesting angle

Student drawing of their closet







Student portrait interesting angle



Student still life