

JAPAN

日本

JAPAN

Architecture + Culture

JUNE 2019

2-3 days Chicago / 28 days Japan

ARCH 497 – Reflective Recordings, 3 cr.
Professor Wetzel

ARCH 509 – Topics in Advanced Technology, 3 cr.
Professor Ninoyu



BASE ITINERARY

TOKYO (5 + 8 days)

National Museum of Western Art	Le Corbusier
National Art Center	Kisho Kurokawa
Nezu Museum	Kengo Kuma
Mori Art Museum	KPF
Gallery of Horu-ji Treasures	Yoshio Taniguchi
Sumida Hokusai Museum	SANAA
Design 21-21	Tadao Ando
Yoyogi National Stadium	Kenzo Tange
Shibaura House	Kazayo Sejima
SunnyHills Cake Shop	Kengo Kuma
Nagakin Capsule Tower	Kisho Kurokawa
Shinonome Canal Court Housing	Yamamoto, Ito, Kuma, Yama, Motokura
Tokyo International Forum	Rafael Vignoly
Sumida Cultural Factory	Itsuko Hasegawa
Tara Okomoto Memorial Museum	
Gallery Ma and Toto Gallery	
Yokohama International Terminal	FOA
Tama Art University Library	Toyo Ito
Musashino Art University +Library	Yoshinobu Ashihara and Sou Fujimoto
KIT Workshop	Junya Ishigami
Hana Miodori Cultural Center	Atelier Bow Wow

HIROSHIMA / MIYAJIMA (4 nights)

Hiroshima Peace Memorial	Kenzo Tange
World Peace Memorial Cathedral	Togo Murano
Hiroshima Nishi Fire Station	Riken Yamamoto
Naka Waste Incineration Plant	Yoshio Taniguchi
City Museum of Contemporary Art	Kisho Kurokawa
Orizuru Tower	Sambuichi Hiroshi
Great Torii / Itsukushima Shrine	
Miyajima Observatory	Sasmbuichi Hiroshi

IMABARI / IMAJISHI (day trip from Hiroshima)

Architecture Museum	Toyo Ito
Silver Hut	Toyo Ito

NAOSHIMA / INUJIMA / TESHIMA (4 nights)

Naoshima Ferry Terminal	SANAA
Naoshima Art Houses	Ando, Turrell
Benesse Museum	Tadao Ando
Lee Ufan Museum	Tadao Ando
Chichu Museum	Tadao Ando
Teshima Art Museum	Ryue Nishizawa
Seirensho Museum	Sambuchi Hiroshi

TAKAMATSU (day trip form Naoshima)

Isamu Noguchi Museum

HIMEJI (on route to Osaka)

Himeji Castle

OSAKA (4 nights)

Church of Light	Tadao Ando
Shiba Ryotaro Museum	Tadao Ando
Chikatsuasuka Museum	Tadao Ando
Sayamaike Museum	Tadao Ando

AWAJI (day trip from Osaka)

Awaji Yumebatai	Tadao Ando
Honpukuji Water Temple	Tadao Ando

KYOTO (4 nights)

Garden of Fine Arts Museum	Tadao Ando
Times I and II	Tadao Ando
Art Museum	Fumihiko Maki
Kyoto National Museum addition	Yoshio Taniguchi
Miho Museum	I. M. Pei
Imperial Palace	
Inari Temple ++++++	

NARA (day trip from Kyoto)

Nara Centennial Hall	Arata Isosaki
Nara City Museum of Photography	Kisho Kurokawa
Horyu-ji Temple	
Todai-ji Temple	

KANAZAWA (2 nights)

21 st Century Museum of Contemporary Art	SANAA
Kanazawa Umimirai Library	Coelacanth, K+H Architects
D. T. Suzuki Museum	Yoshio Taniguchi
Kenroku-en Gardens	

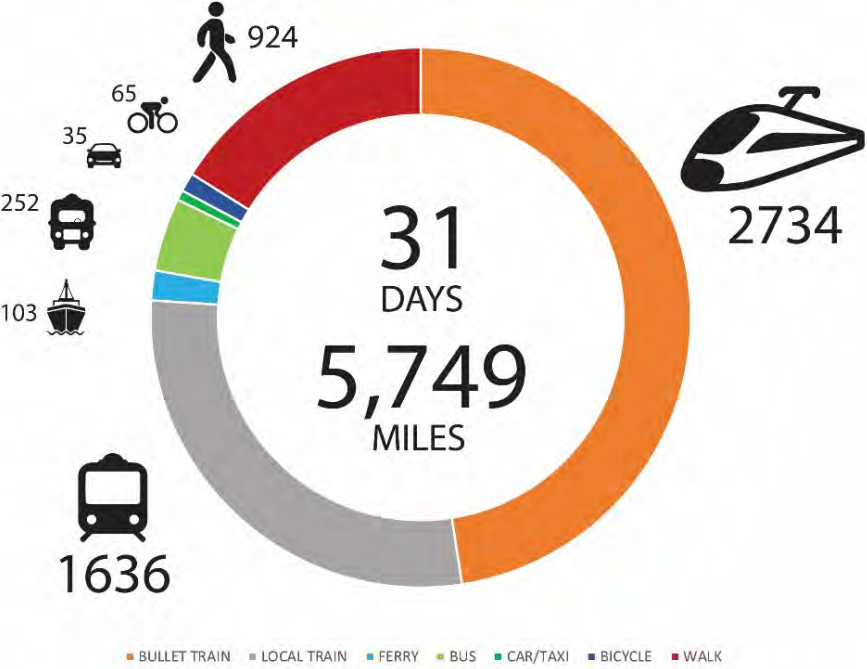
NAGOYA (2 nights)

City Museum of Modern Art	Kisho Kurokawa
Meiso-no Mori Funeral Hall	Toyo Ito
Gifu-Kiagata Apartments	Sejima, Diller, Hawley, Takahashi
Imperial Hotel	Frank Lloyd Wright
Atsutakotai Shrine	
Toyota Municipal Museum	Yoshio Taniguchi

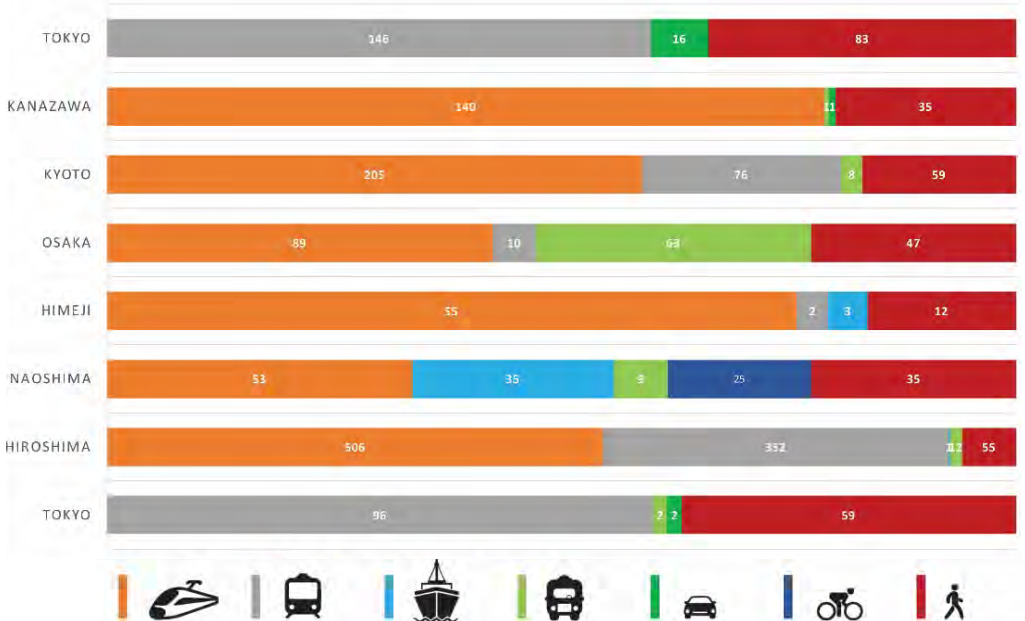


MILESTONES & DESTINATIONS – MAY 26 TO JUNE 27, 2018

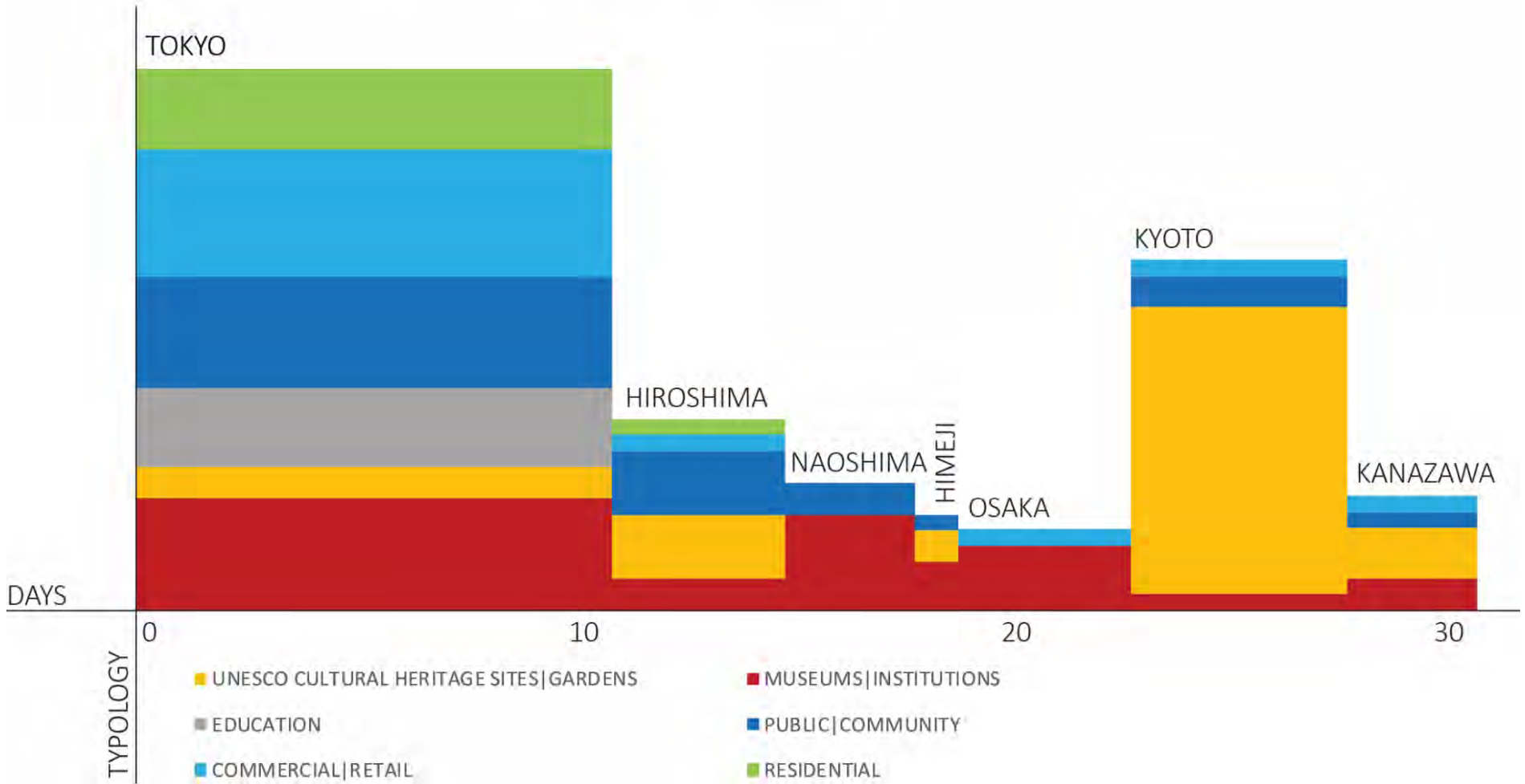
TRANSPORTATION MODE BY MILEAGE



TRANSPORTATION MODE PER CITY (%)



ARCHITECTURAL SITES VISITED PER CITY



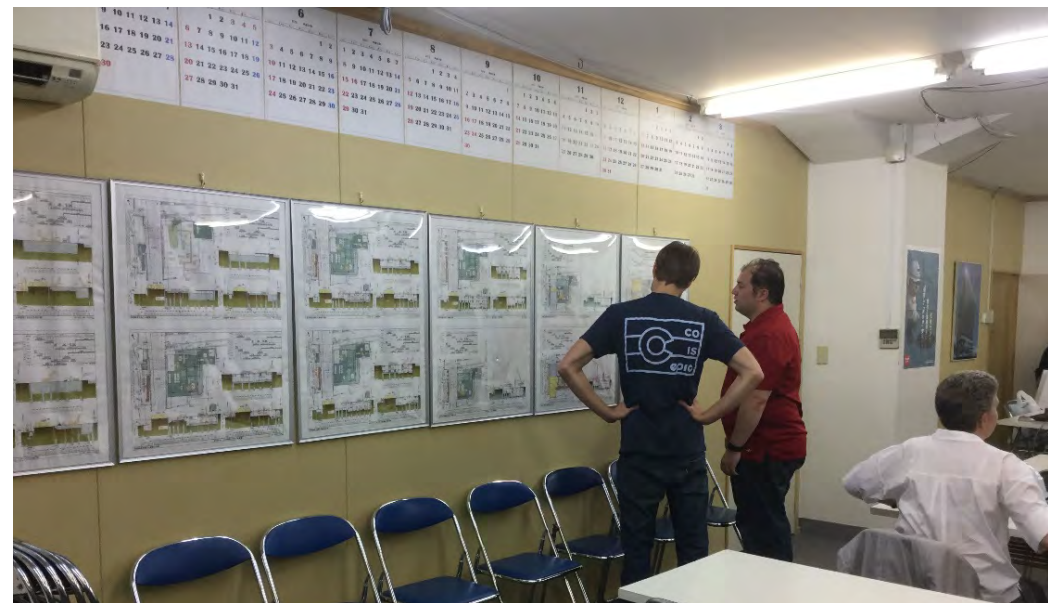
CONSTRUCTION SITE

Metropolitan Plaza Office Tower

Client: Seibu Railway

Architect: Nikken Sekkei

General Contractor: Obayashi Corp.



DESIGN FIRM VISITS

Junya Ishigami & Associates

Kengo Kuma Architects & Associates

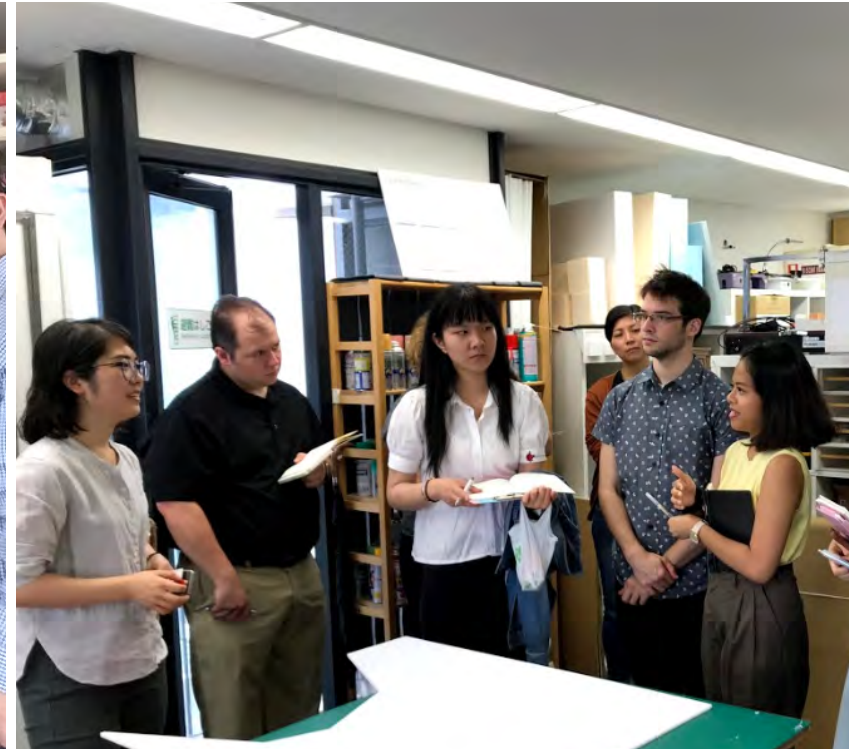
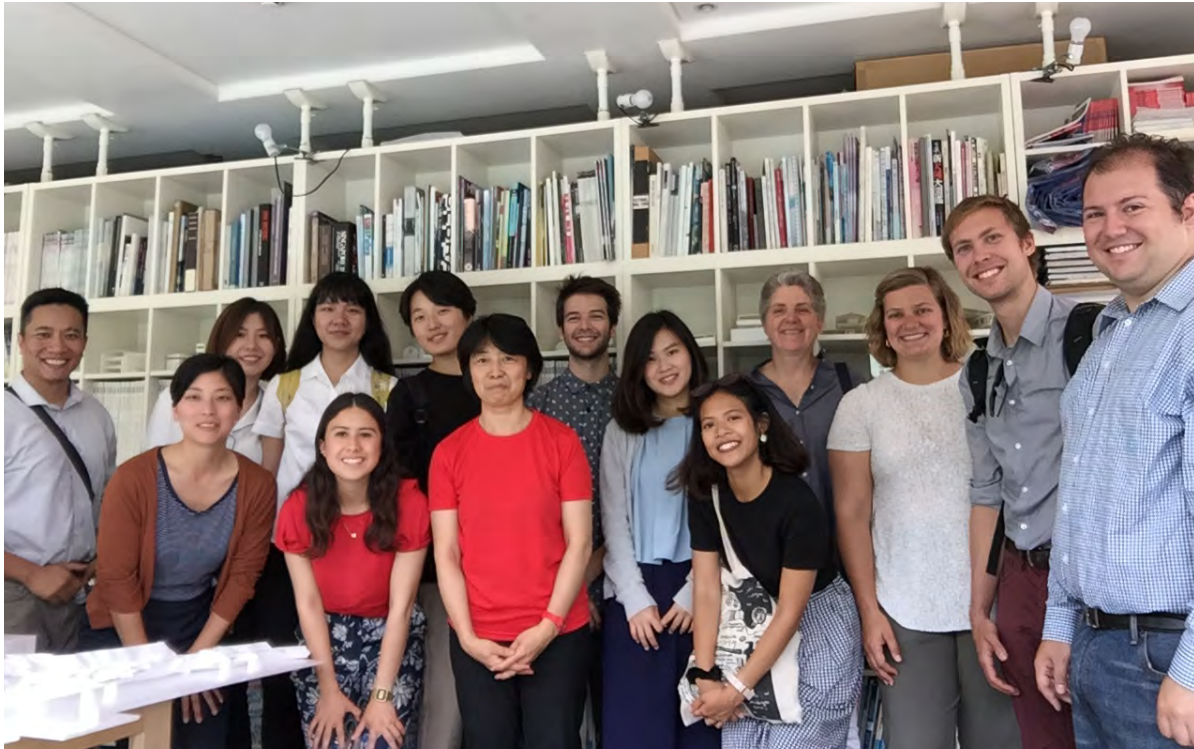
Gensler & Associates Int'l Ltd. – Tokyo

Kumiko Inui Architects

Tadao Ando Architects & Associates

Tezuka Architects

Nikken Sekkei



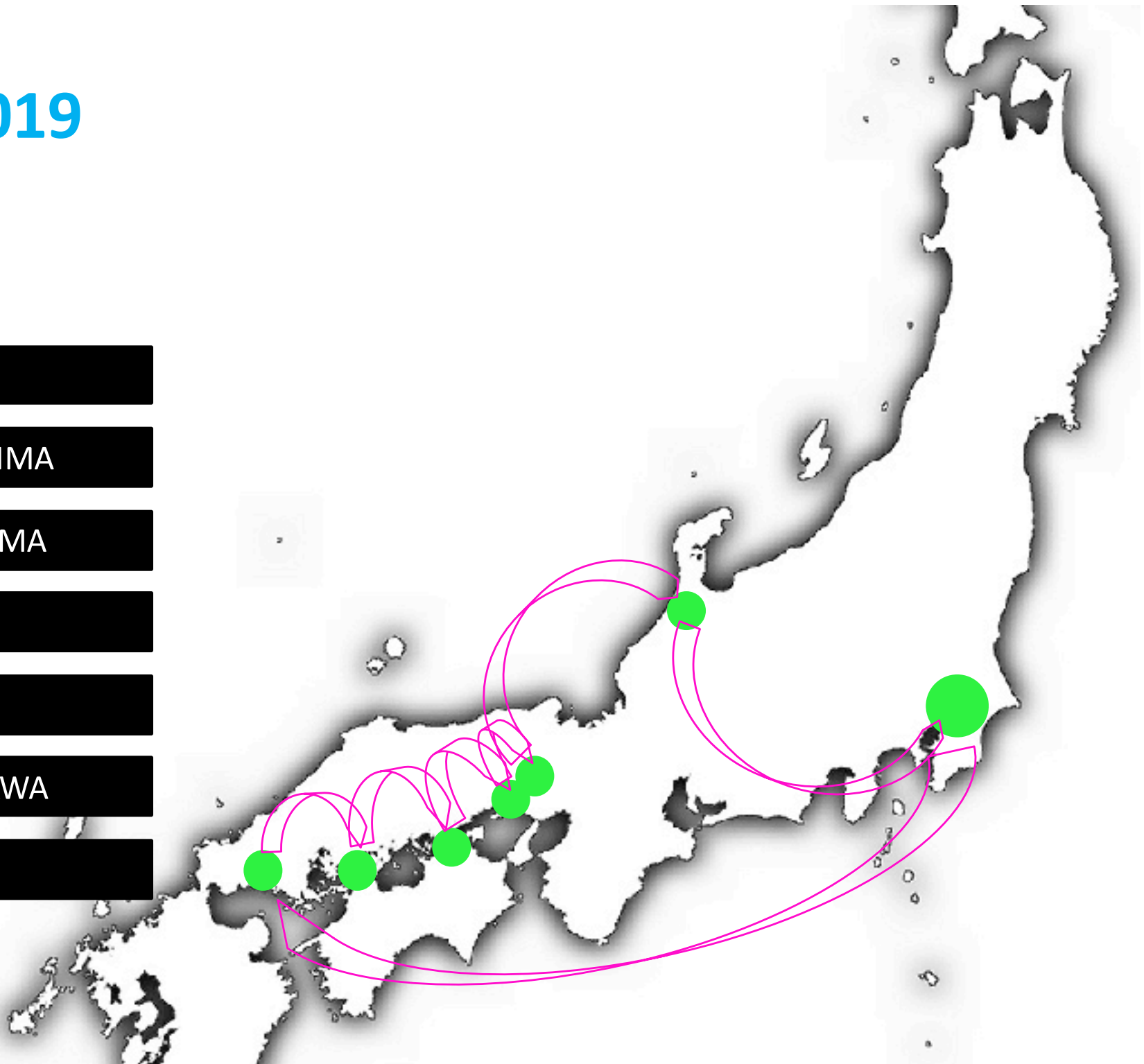
RESEARCH

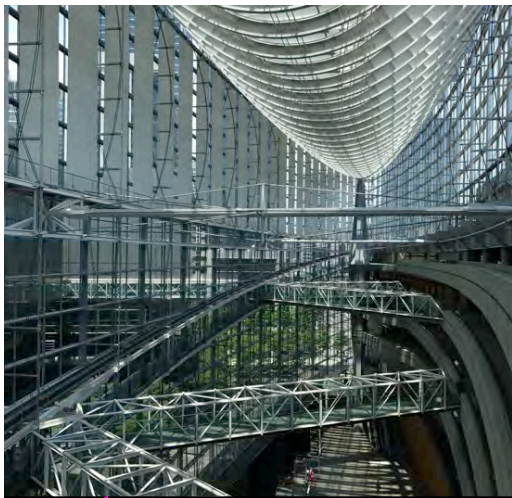
Obayashi Corporation's
Technical Research Institute
Net Zero Office & Research Labs



JUNE 2019

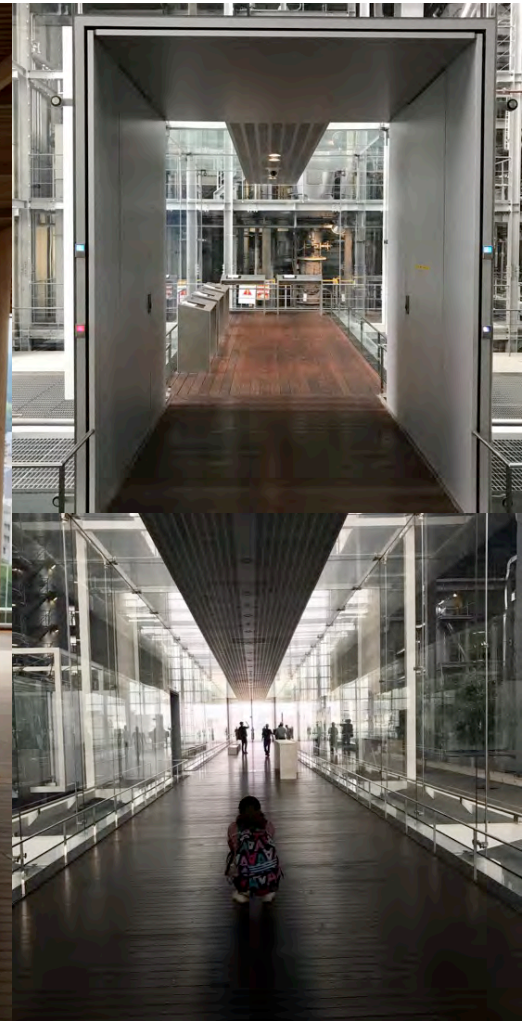
- 1 TOKYO
- 2 HIROSHIMA
- 3 NAOSHIMA
- 4 OSAKA
- 5 KYOTO
- 6 KANAZAWA
- 8 TOKYO



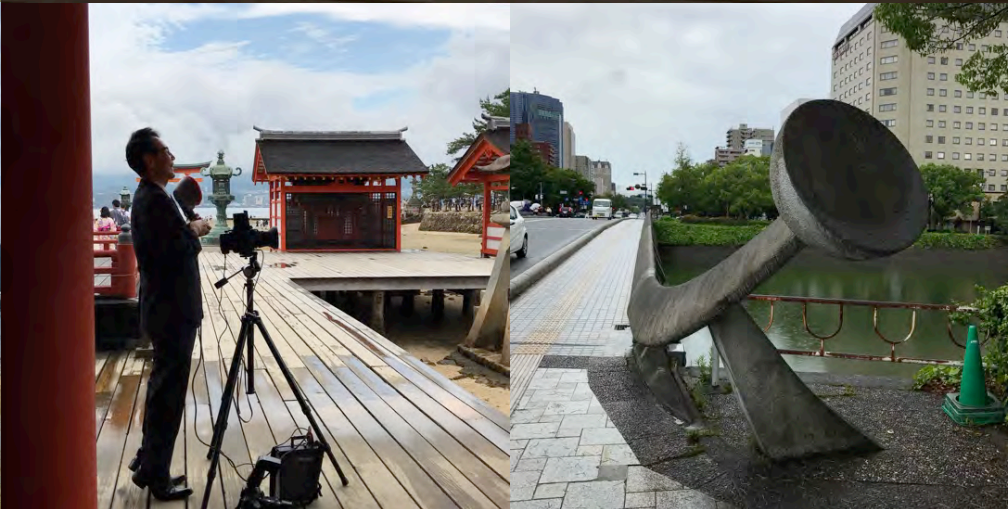


TOKYO





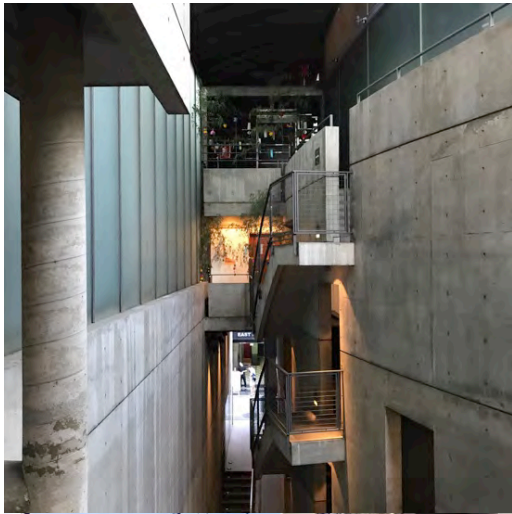
2 HIROSHIMA



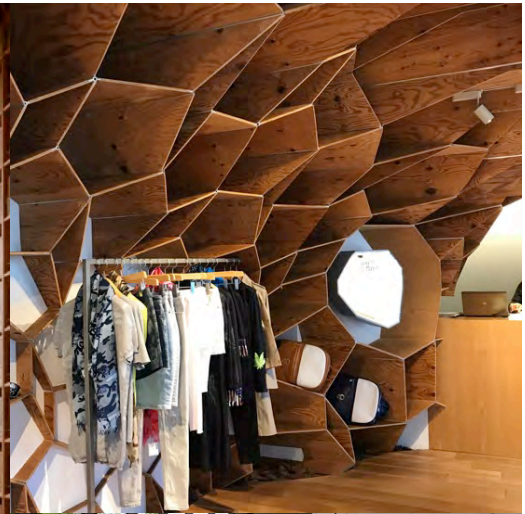
3

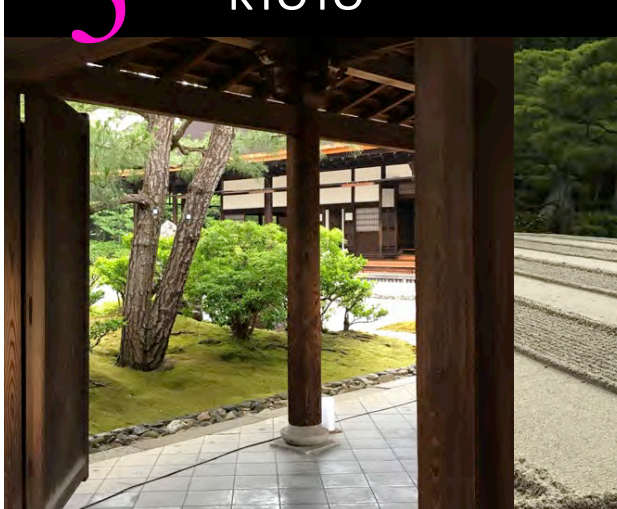
NAOSHIMA



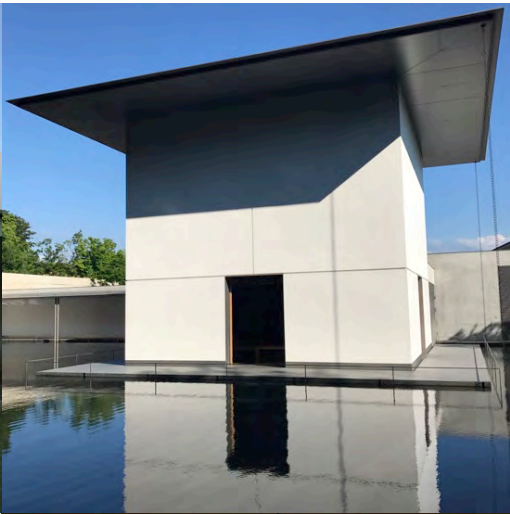


4 OSAKA





5 KYOTO



6

KANAZAWA





7 TOKYO

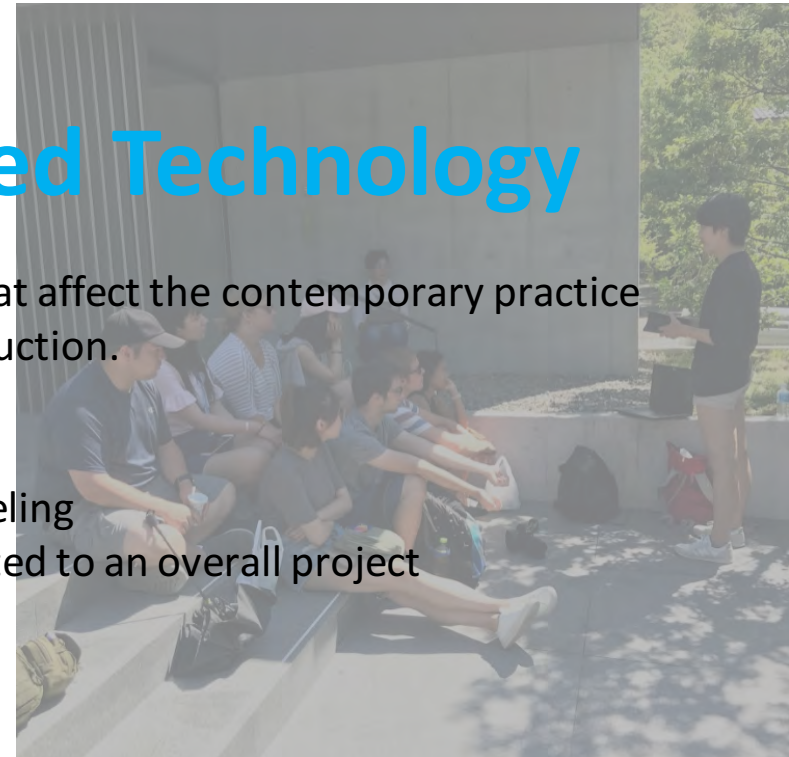
Arch 509 – Topics in Advanced Technology

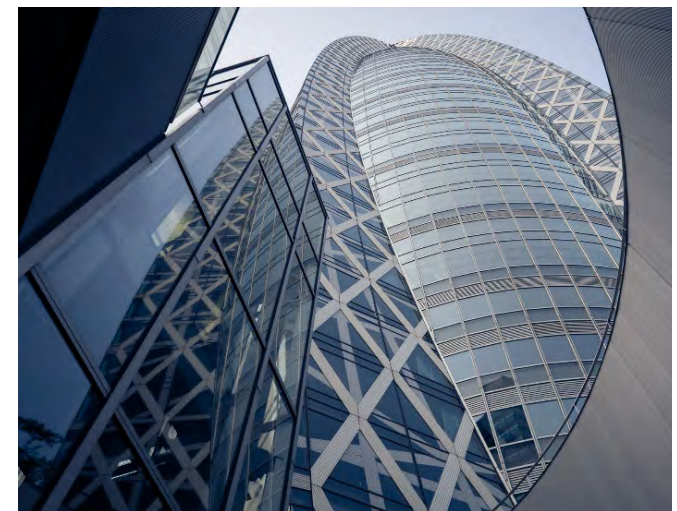
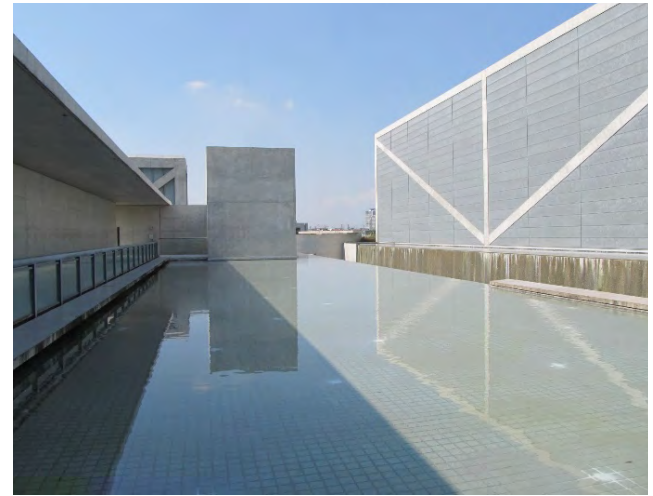
This research seminar examines advances in the technologies that affect the contemporary practice of Japanese architects and their role in building design and production.

Work includes

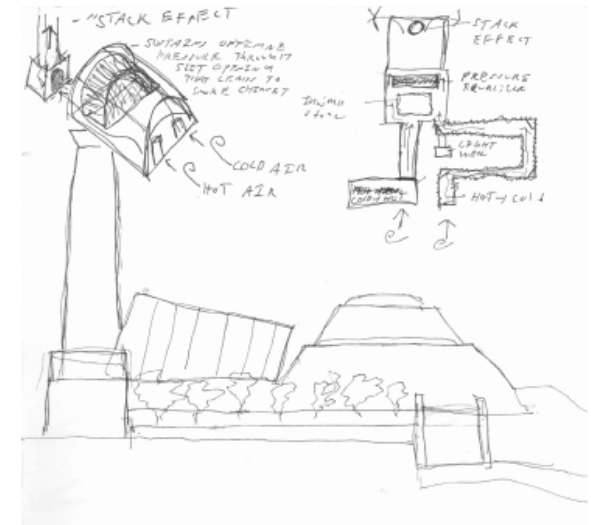
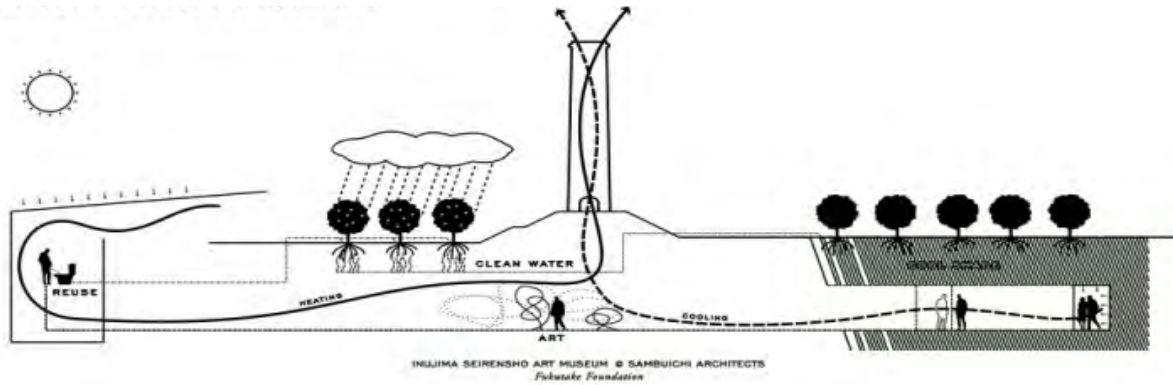
- researching an architect and their body of work prior to traveling
- examining a design or construction innovation that contributed to an overall project
- presenting and documenting on location
- preparing a comprehensive research document

1. Naka Power Plant
2. Seirenscho Museum
3. Sayamaike Museum
4. Nara Centennial Hall
5. D.T. Suzuki Museum
6. 21st Century Museum
7. Kanagawa Institute of Technology
8. Tama University Library
9. Mode Gakuen Cocoon Tower





ENVIRONMENTAL SYSTEMS

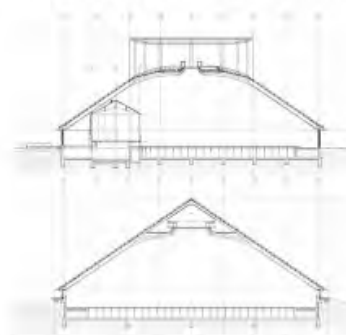


Site Visit Sketches



- Completed 2016, the result of over 2.5 years of studying the villages on the island of Naoshima.
- Sambuichi found that town planning recognized N-S alignment due to wind direction.
- Community center developed using techniques from traditional Gassho Style Architecture.
- Aperture in second roof acts as wind funnel for passive ventilation
- White interior also reflects indirect natural light into main hall.
- Local materials used in construction of cypress roof.
- Structure is lowered into a hill with the same pitch as the roof and surrounded by water in order to create harmony with the site and provide additional passive temperature control.

Comparing the Naoshima Hall to a traditional Gassho style hut from the Hedo village. Both Structures feature the Irimoya style roof which allows for air ventilation and passive cooling through the top aperture. Sambuichi further mimics the thatched roof through the thin strips of Cypress which have natural color variation.



Sections of the Naoshima Hall



Air cooling system in the summer. Warm air enters the Earth Gallery and is cooled by the time it enters the rest of the building.

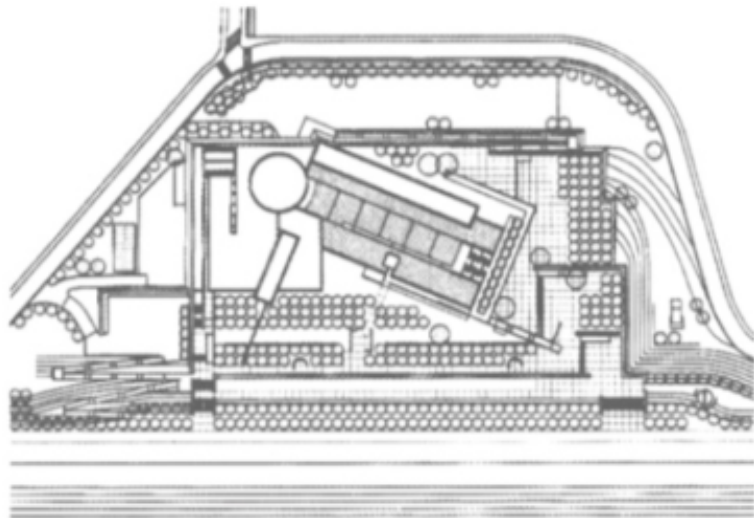
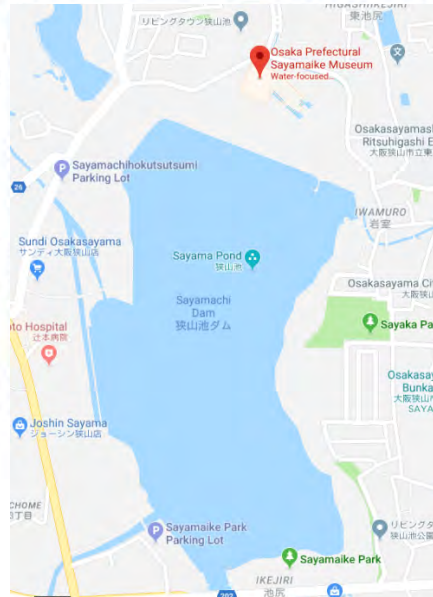


Air Heating System in the Winter. Cold air enters the Sun Gallery and is warmed by the time it enters the building.

SITE CONSIDERATIONS

The Need for a Museum: An Historical Discovery

- Restoration of the Sayamaike Reservoir began in 1993.
- Repairs exposed artifacts which were from the Kamakura Period (12th to 13th Centuries), prompting further excavation.
- As excavation continued, repairs dating back to the year 616 were discovered.
 - This allowed for a deeper understanding of the history of Japanese civil engineering.
- The Prefecture of Osaka elected to preserve the area and to construct a museum in close proximity to the discoveries.



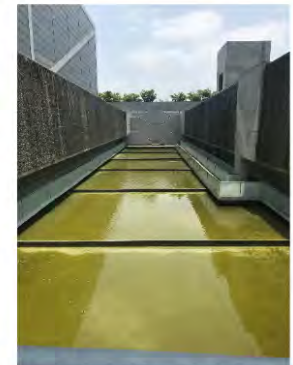
Stepwell Inspiration

- The main entry, which brings the visitor underground via two sets of reflected stairs, into an area which water is freely flowing, seeming as though it is filling up, is reminiscent of the stepwells found in India.
- Furthermore, the presence of these stepwells is typically not made obvious with an above-ground structure, as is similar with the majority of Sayamaike.
- The use of the stepwell is not simply an aesthetic choice, but is a nod to the exhibited wall, which is appropriately oriented to face the water feature that visitors walk along to enter the museum.

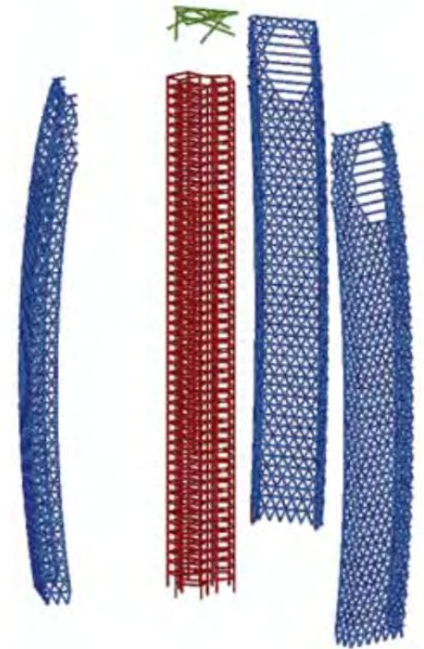
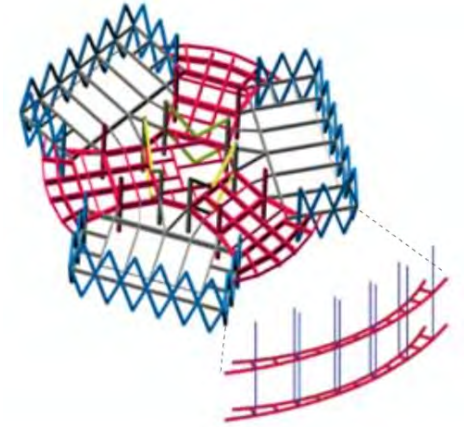
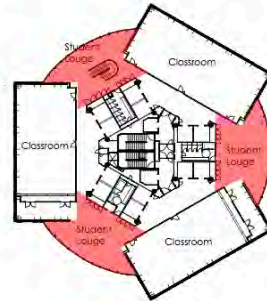
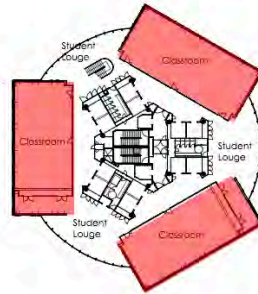
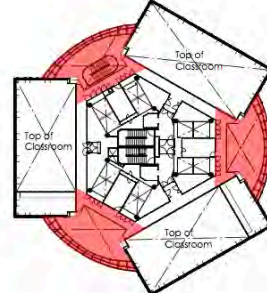
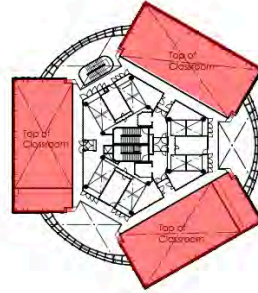
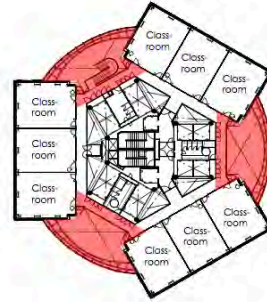
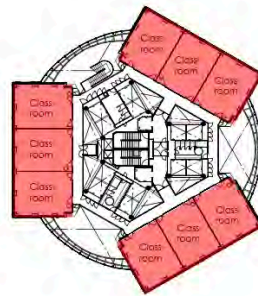


An Historical Aesthetic

- The entrance into the museum proper emphasizes the evolution in construction and engineering technologies, starting with rough-cut stone which harmonizes with the discoveries of the site, while later transitioning to concrete.



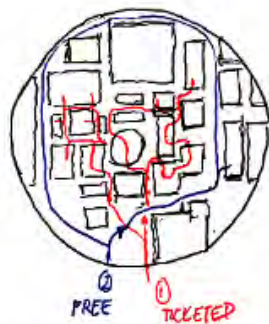
PROGRAM & STRUCTURE



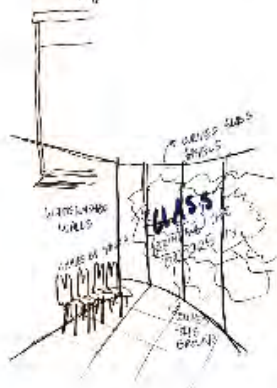
PLACE



MAPPING MY FLOW



detail of glass



Connection

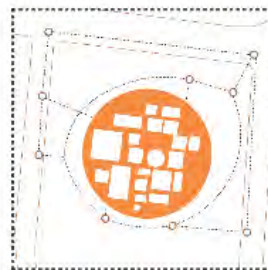


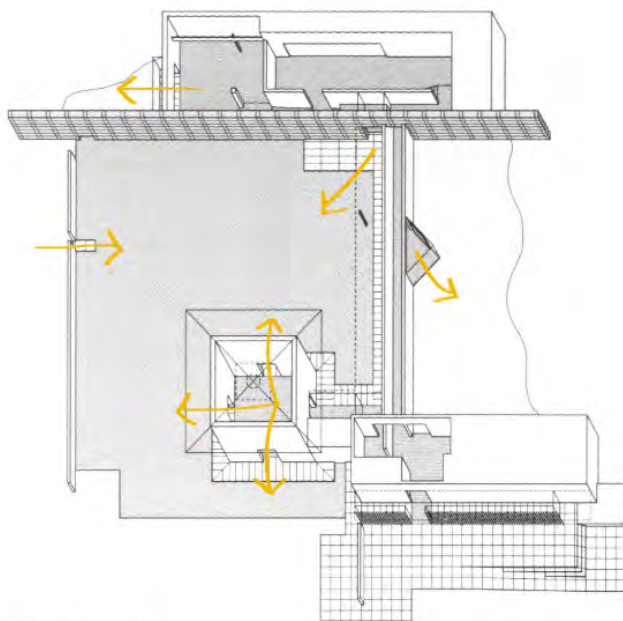
Figure ground



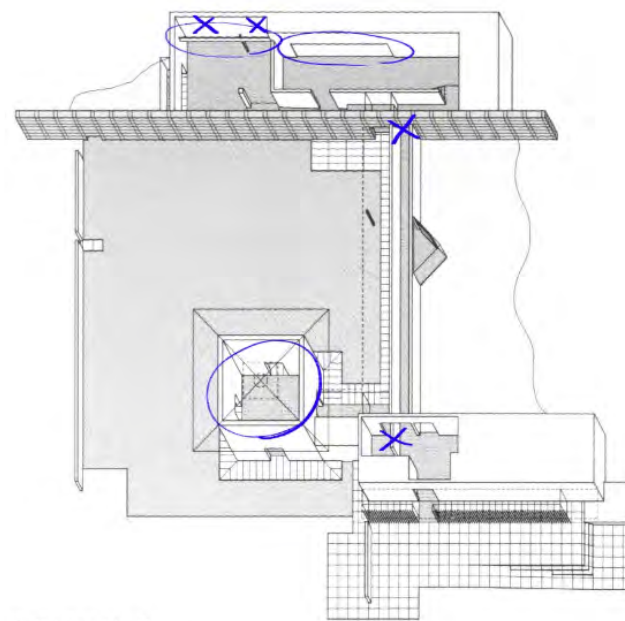
Main roads



Processional views



Toko & items



N

アクソノメトリック

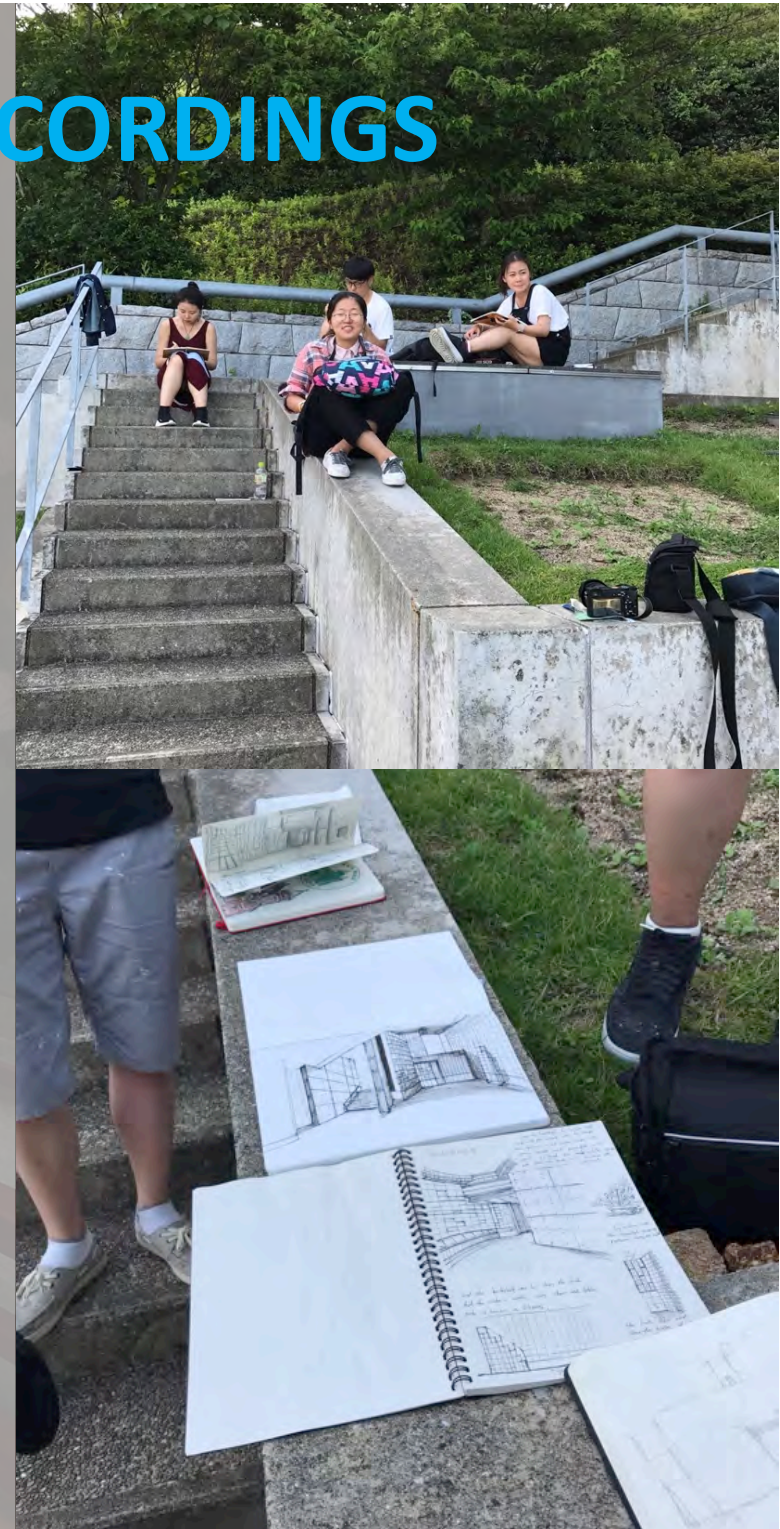
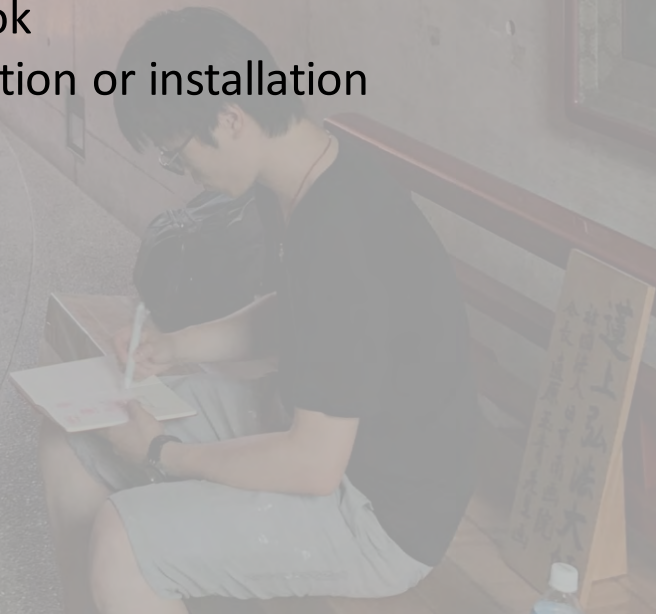
アクソノメトリック

ARCH 497-01 REFLECTIVE RECORDINGS

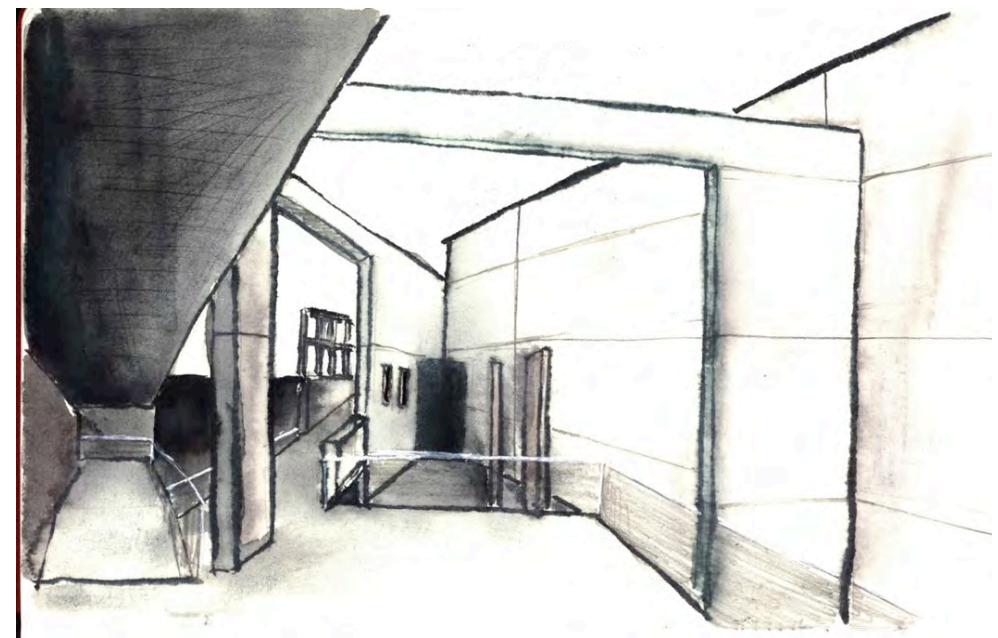
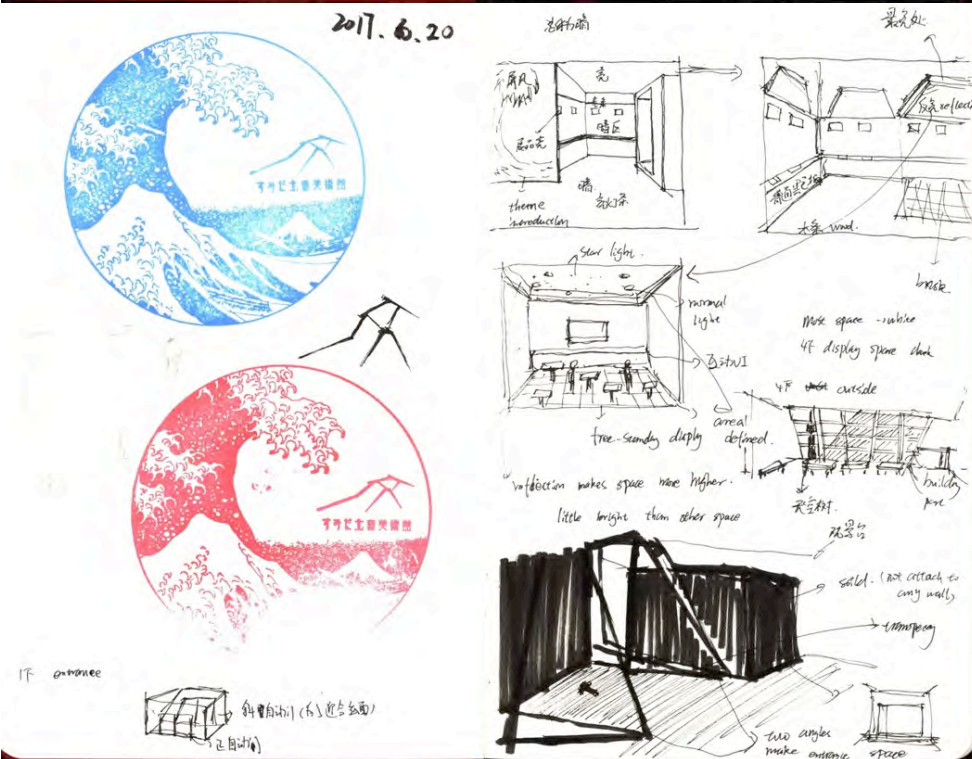
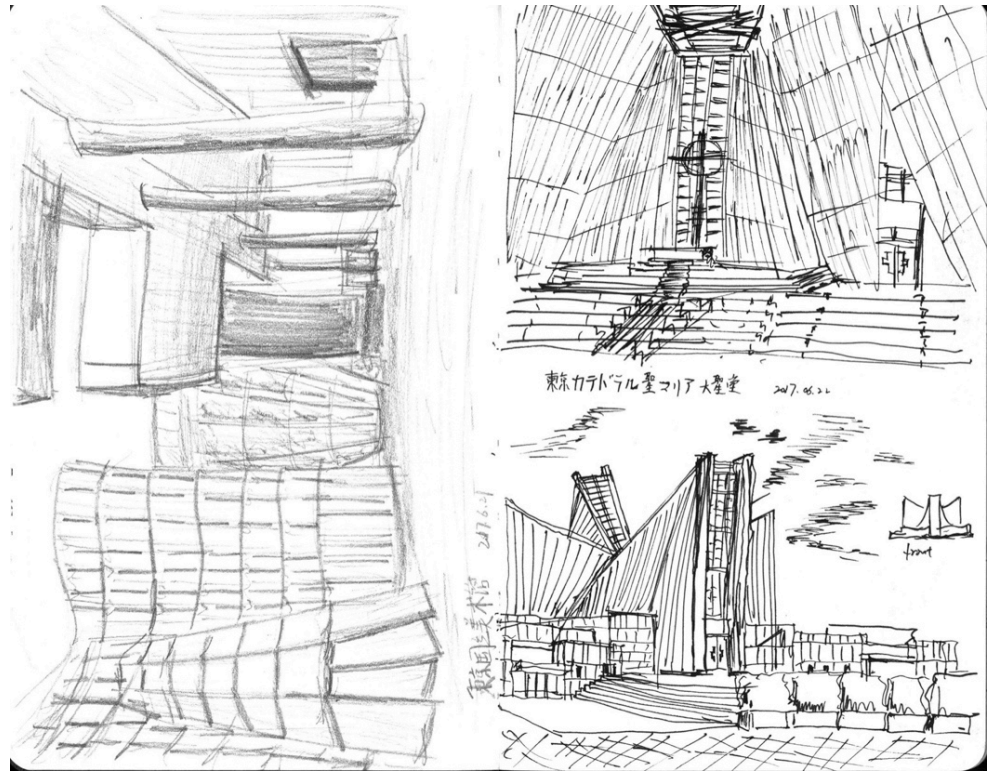
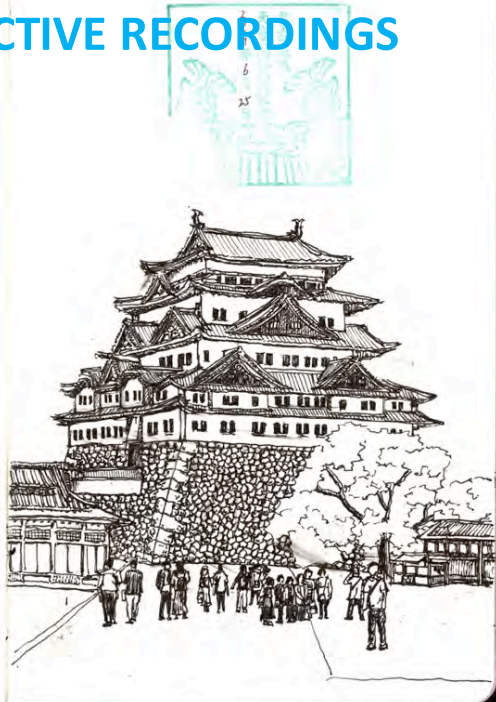
This course explores the ways in which architects record experiences of the built environment associated with travel. Students produce a body of self-directed work that collects observations and interactions relevant to their experience.

Work includes

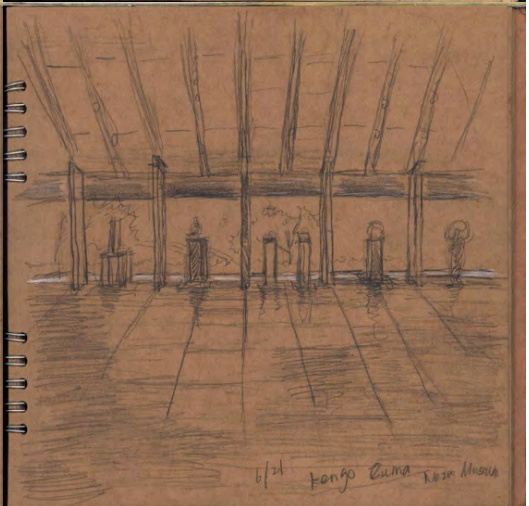
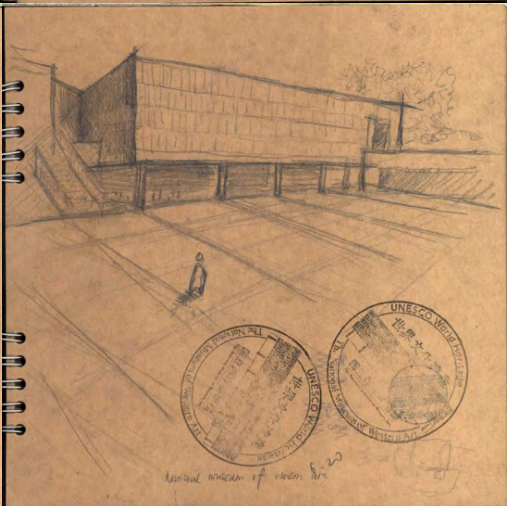
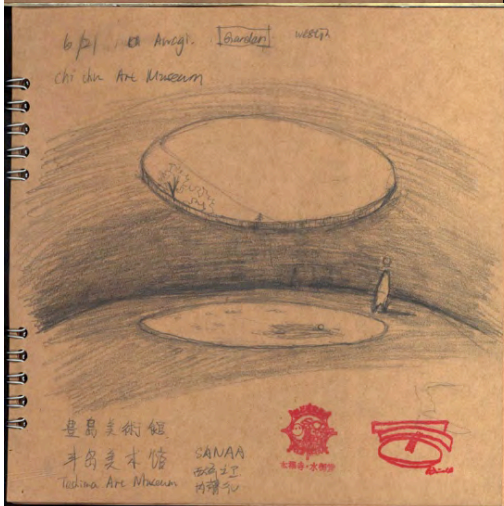
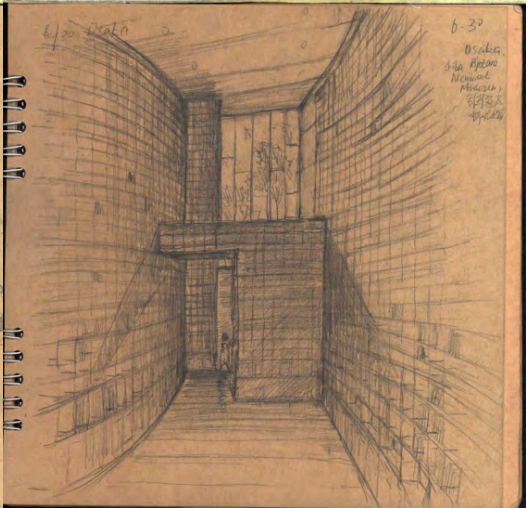
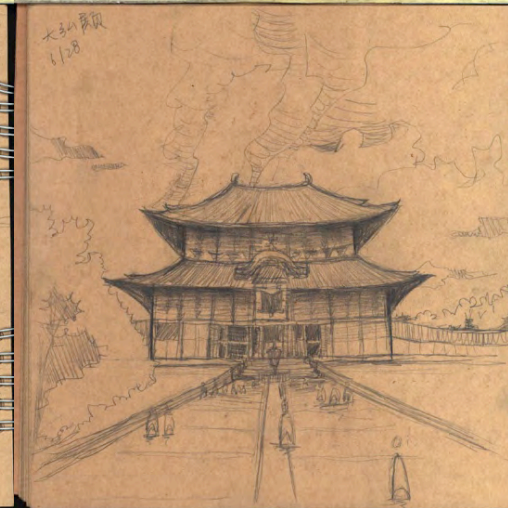
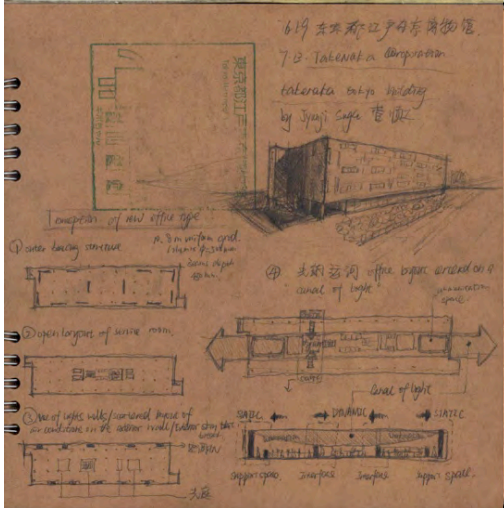
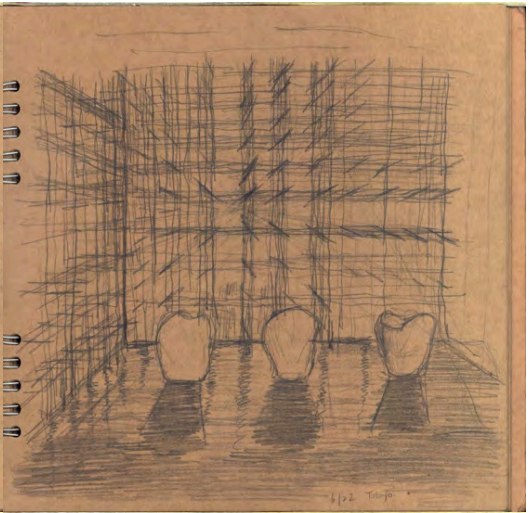
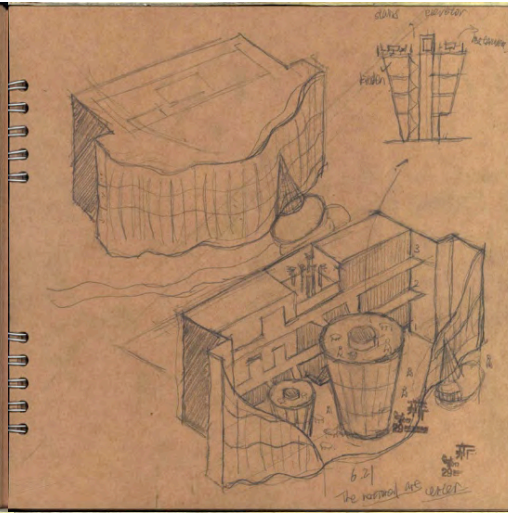
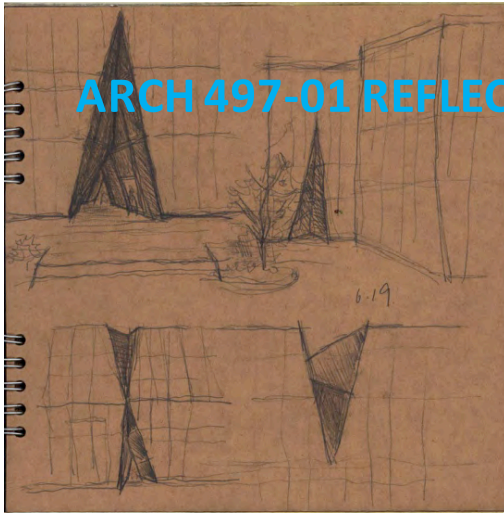
- keeping a sketchbook
- writing postcards
- comparative studies using photomontage
- a 28 day photo series
- producing an observational video
- producing a final book
- a site specific interaction or installation



ARCH 497-01 REFLECTIVE RECORDINGS



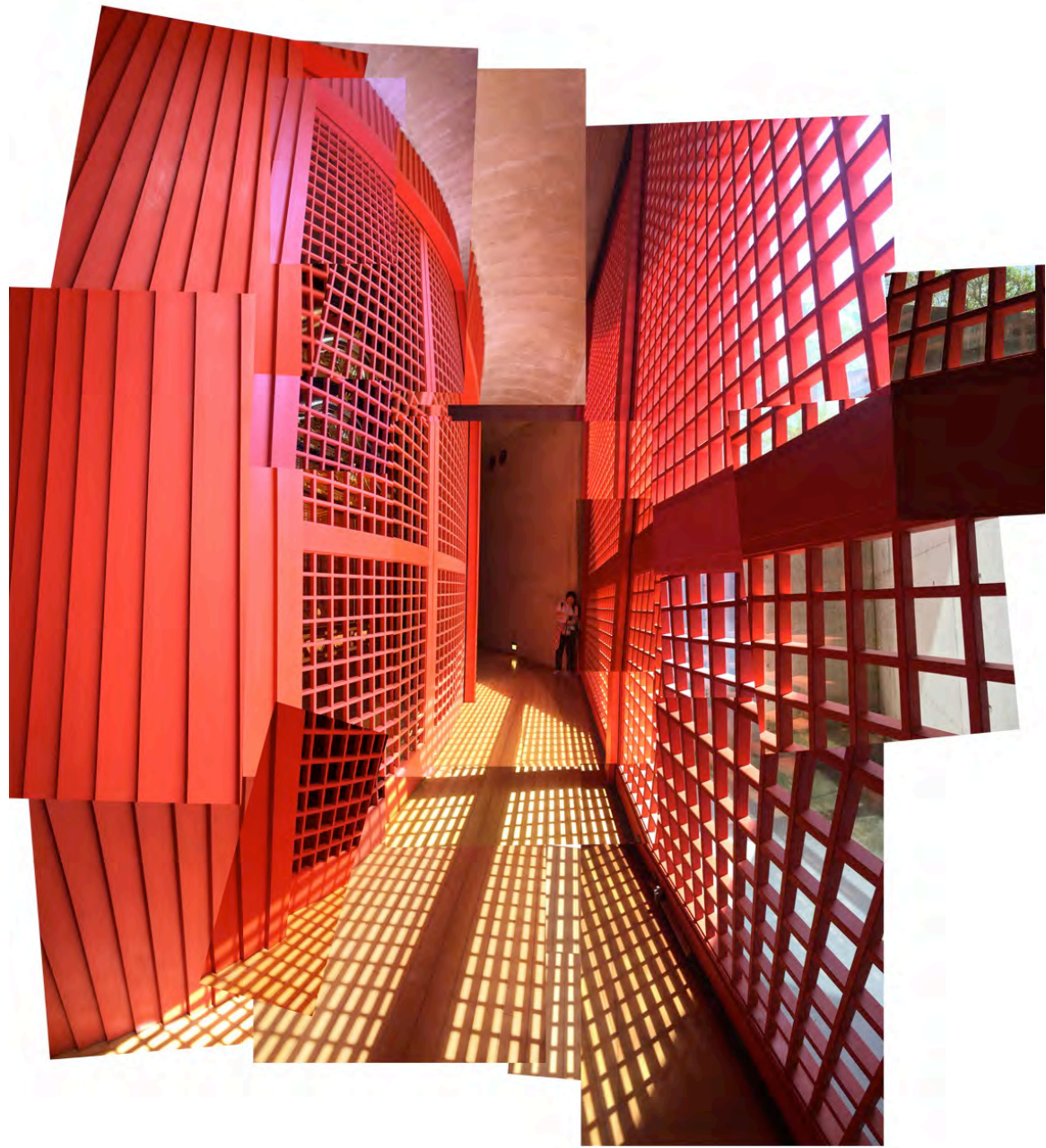
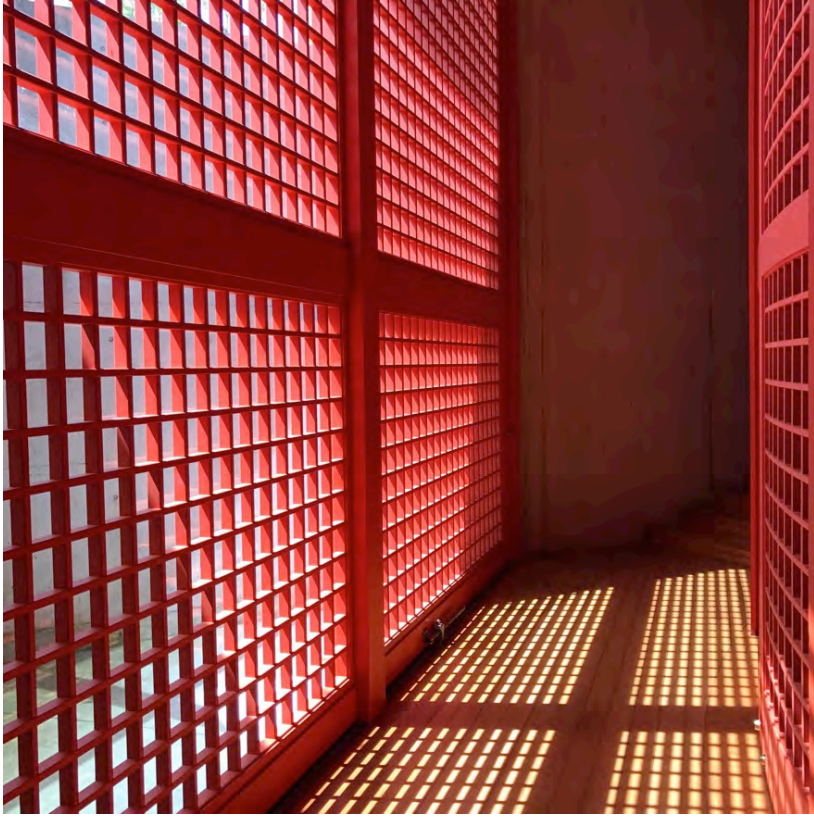
ARCH 497-01 REFLECTIVE RECORDINGS



ARCH 497-01 REFLECTIVE RECORDINGS



ARCH 497-01 REFLECTIVE RECORDINGS



ARCH 497-01 REFLECTIVE RECORDINGS



28 DAYS OF

ARCH 497-01 REFLECTIVE RECORDINGS

To: Catherine Wetzal
We are very excited
and very happy to have this
ship with you! I can't wait to see you!
Kawaii = Fun
Machiko
USA
3360 S State St Chicago IL 60616
SR Crown Hall / IIT Architecture coll

To Professor Catherine Wetzal
3360 S. State St, Chicago, Illinois
60616 USA
Dear Professor Wetzal,
street on the back of this post card has
of today. Instead, there are tables
of people walking and dining on the town
to see various uses of such a busy road

Dear Prof. Catherine
Benesse museums were expensive museums and
mean (strict NO PICTURES) but it was one of the precious
experience. The project's location is interesting; scattered
on the islands in the inner sea. Needless to say, harmony
between architecture and art works is the important in this
project. And for me, it gave me many lessons how architecture
can influence on region & society. I asked residents in many
times if they got happier than before this project, they are
strongly positive because they could meet missing people
and communicate with them.

Post
BY AIR MAIL 航空
PAR AVION
the Hokusa
designer by
concept
Professor Wetzal
Crown Hall, IIT
3360 S. State St
Chicago, IL 60616

Post Card
Dear Prof. Catherine. ☺
Benesse museums were expensive museums and
mean (strict NO PICTURES) but it was one of the precious
experience. The project's location is interesting; scattered
on the islands in the inner sea. Needless to say, harmony
between architecture and art works is the important in this
project. And for me, it gave me many lessons how architecture
can influence on region & society. I asked residents in many
times if they got happier than before this project, they are
strongly positive because they could meet missing people
and communicate with them.



3360 S State St
Chicago, IL, USA
SR CROWN HALL
(IIT, College of A
To: Catherine W

POST CARD
Dear prof. Cath me
Hello professor, I hope you like this drawing. ☺
Weather is hot and humid but precious exp ence
in here removes that obstacles enough.
In my memory about recent tour, Ginza's elegant
textures on the rows of architecture facade
remain so strong. It seems to be art itself.
It shows contemporary culture and diverse
expression on beauties. And also region's
characteristics and images; consumption &
identity of each being.



高坂三十六景 隠田の水車
すみだ北斎美術館蔵

都奈良の情
8月13日
Sorrow
But
Flaps grow
from rains

地 Chi 中 chu 美
To Professor Wetzal
Crown Hall
IIT 3360 S. State St.
Chicago, IL, 60616
USA

P.S. I strongly appreciate even when
animates minute cases "Spirited Away"
It's my favorite Ghibli's drawing
To: Professor Catherine Wetzal
3360 S. State St
60616, United States
Chicago, Illinois

ARCH 497-01 REFLECTIVE RECORDINGS



일본에서 나에게 日本から来たへ

More compassionate mind,
more sense of concern for other's well-being,
is source of happiness

Dalai Lama



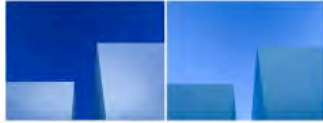
Fushimi Inari Jingu

- ROUTE PLACE, ARCHITECT
- 01 TOKYO CHUO
 - 02 NAGA OSAKA - TOKYO
 - 03 TOKYO MUSEUM - SHIBUYA
 - 04 KYOTO STATION - KASUGA GARA
 - 05 NAGA STATION
 - 06 KATANA SURVIVAL YELLA
 - 07 NAGA STATION - SHIBUYA STATION
 - 08 TOKYO INTERNATIONAL CENTER - NAGAIKI VILLAGE
 - 09 NAGA INTERNATIONAL CENTER - TOKYO STATION
 - 10 GINZA JI - KASUGA GARA
 - 11 ART CENTER MUSEUM - GARA
 - 12 TOKYO INTERNATIONAL CENTER - NAGAIKI VILLAGE
 - 13 TOKYO INTERNATIONAL CENTER - NAGAIKI VILLAGE
 - 14 TOKYO INTERNATIONAL CENTER - NAGAIKI VILLAGE
 - 15 TOKYO INTERNATIONAL CENTER - NAGAIKI VILLAGE
 - 16 TOKYO INTERNATIONAL CENTER - NAGAIKI VILLAGE
 - 17 TOKYO INTERNATIONAL CENTER - NAGAIKI VILLAGE
 - 18 TOKYO INTERNATIONAL CENTER - NAGAIKI VILLAGE
 - 19 TOKYO INTERNATIONAL CENTER - NAGAIKI VILLAGE
 - 20 TOKYO INTERNATIONAL CENTER - NAGAIKI VILLAGE
 - 21 TOKYO INTERNATIONAL CENTER - NAGAIKI VILLAGE
 - 22 TOKYO INTERNATIONAL CENTER - NAGAIKI VILLAGE
 - 23 TOKYO INTERNATIONAL CENTER - NAGAIKI VILLAGE
 - 24 TOKYO INTERNATIONAL CENTER - NAGAIKI VILLAGE
 - 25 TOKYO INTERNATIONAL CENTER - NAGAIKI VILLAGE
 - 26 TOKYO INTERNATIONAL CENTER - NAGAIKI VILLAGE
 - 27 TOKYO INTERNATIONAL CENTER - NAGAIKI VILLAGE
 - 28 TOKYO INTERNATIONAL CENTER - NAGAIKI VILLAGE
 - 29 TOKYO INTERNATIONAL CENTER - NAGAIKI VILLAGE
 - 30 TOKYO INTERNATIONAL CENTER - NAGAIKI VILLAGE
 - 31 TOKYO INTERNATIONAL CENTER - NAGAIKI VILLAGE
 - 32 TOKYO INTERNATIONAL CENTER - NAGAIKI VILLAGE
 - 33 TOKYO INTERNATIONAL CENTER - NAGAIKI VILLAGE
 - 34 TOKYO INTERNATIONAL CENTER - NAGAIKI VILLAGE
 - 35 TOKYO INTERNATIONAL CENTER - NAGAIKI VILLAGE
 - 36 TOKYO INTERNATIONAL CENTER - NAGAIKI VILLAGE
 - 37 TOKYO INTERNATIONAL CENTER - NAGAIKI VILLAGE
 - 38 TOKYO INTERNATIONAL CENTER - NAGAIKI VILLAGE
 - 39 TOKYO INTERNATIONAL CENTER - NAGAIKI VILLAGE
 - 40 TOKYO INTERNATIONAL CENTER - NAGAIKI VILLAGE
 - 41 TOKYO INTERNATIONAL CENTER - NAGAIKI VILLAGE
 - 42 TOKYO INTERNATIONAL CENTER - NAGAIKI VILLAGE
 - 43 TOKYO INTERNATIONAL CENTER - NAGAIKI VILLAGE
 - 44 TOKYO INTERNATIONAL CENTER - NAGAIKI VILLAGE
 - 45 TOKYO INTERNATIONAL CENTER - NAGAIKI VILLAGE
 - 46 TOKYO INTERNATIONAL CENTER - NAGAIKI VILLAGE
 - 47 TOKYO INTERNATIONAL CENTER - NAGAIKI VILLAGE
 - 48 TOKYO INTERNATIONAL CENTER - NAGAIKI VILLAGE
 - 49 TOKYO INTERNATIONAL CENTER - NAGAIKI VILLAGE
 - 50 TOKYO INTERNATIONAL CENTER - NAGAIKI VILLAGE



TOKYO INTERNATIONAL CENTER

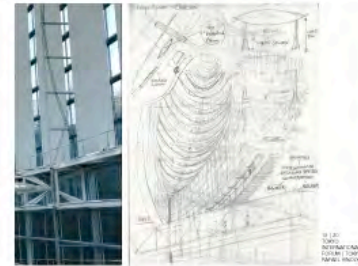
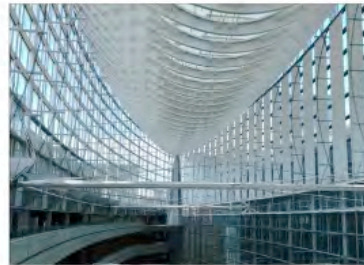
Records in this book
reflect my personal view of the world and architecture.
Architecture represents different things to different people
but to me it is something beautiful that embraces
My society and nature.



TOYO INTERNATIONAL CENTER



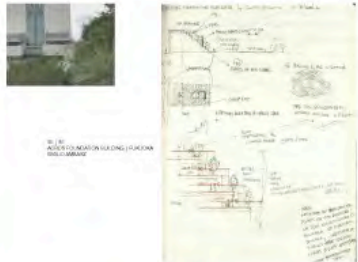
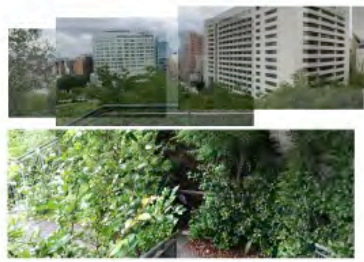
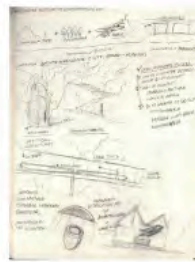
TOKYO INTERNATIONAL CENTER



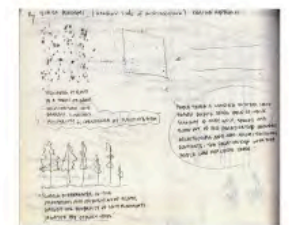
TOKYO INTERNATIONAL CENTER



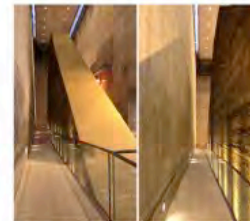
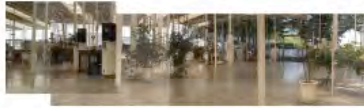
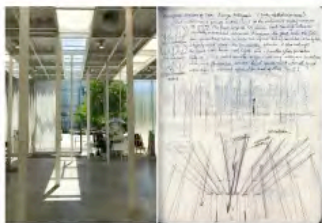
TOKYO INTERNATIONAL CENTER



TOKYO INTERNATIONAL CENTER



TOKYO INTERNATIONAL CENTER



TOKYO INTERNATIONAL CENTER



TOKYO INTERNATIONAL CENTER

EXPENSES

Tuition – 6 credits

Airfare – Approximately \$1200 from the US

Japan Rail Pass - \$500

Other Costs – food, hotels, trains and buses, and entry fees.

Midrange student travel budget \$100 US/day.

500 + 3500 = \$4000 US + airfare + tuition

Last year's student spent less than \$4000 + airfare.

VISAS

Visa requirements vary per nationality/passport. Please refer to the Consulate General of Japan, 737 N. Michigan Ave.

All visas required for travel must be obtained in Chicago by May 7.



learn from travel





experience the place



experience the culture

