

SPICER®



AXIP-0172
April 2021

Illustrated Parts List

Spicer® Commercial Vehicle **Tandem Axles**

Single Reduction, Dual Range, and Double Reduction

461, 462, 463, 601, 652, 653 46,000–65,000 lbs

SEARCH
↓
LOCATE
↓
ORDER
↓
TRACK
↓
SIMPLIFIED.



SpicerParts.com/Aftermarket

SPICER[®]



It's never been easier to do business with Dana.

You've spoken. We've listened. Easily access the genuine Spicer parts information you need to succeed. Search by part number, product type, product line, keywords, and year-make-model. Place and track your orders. It's all here to help streamline your operations and grow your business.

Experience the new one-stop solution from Spicer today!

©Dana Limited, 2017. All rights reserved. Dana Limited, Spicer[®] is a registered trademark of Dana Limited.

Introduction

| | |
|---|-----|
| Models Listing ----- | 2 |
| How to Use The Illustrated Parts List ----- | 3 |
| Model Identification ----- | 4-5 |

Single Reduction

| | |
|-----------------------------------|-------|
| DS461-P • DS521-P • DS581-P ----- | 6-11 |
| RS461 • RS521 • RS581 ----- | 12-13 |

Dual Range & Planetary Double Reduction

| | |
|---|-------|
| DT/DP461-P • DT/DP521-P • DT/DP601-P • DT/DP651-P ----- | 14-19 |
| RT/RP461 • RT/RP521 • RT/RP601 • RT/RP651 ----- | 20-23 |

Planetary Double Reduction

| | |
|---|-------|
| TP/SP461 • TP/SP521 • TP/SP601 • TP/SP651 ----- | 24-29 |
|---|-------|

Shift System

| | |
|--|--------|
| Differential Lockout Assembly - Current Production ----- | 30 |
| Air Operated Lockout Assembly - Non-Current Production ----- | 31 |
| Axle Range Selection & Differential Lockout System ----- | 32 -33 |
| Axle Shift System ----- | 34 |
| Air Shifter Valve ----- | 35 |
| Piston Air Shift System ----- | 36-37 |

Axle Housings & Shafts

| | |
|--|----|
| 461,521,581,601 Forward/Rear Housings ----- | 38 |
| 651 Housings ----- | 38 |
| Axle Shaft Configurations ----- | 39 |
| Axle Hsg/Shafts Models: D521/D581/D601/T521/T601/S521/S601 ----- | 40 |
| Axle Hsg/Shafts Models: D651/T651/S651 ----- | 41 |

Appendix

| | |
|---|-------|
| Gear and Pinion Information * ----- | 42-43 |
| <i>* Pinion Bearing Spacer information included</i> | |
| Differential Carrier Assemblies ----- | 44-45 |
| Input/Output Yoke Information ----- | 46-48 |

Models Listing

The following models are represented in this publication.

Single Reduction Models

| Forward Axle | Rear Axle | Axle Capacity | Gear Size |
|--------------|-----------|---------------|-----------|
| DS-461-P | RS-461 | 46,000 lbs | 18" Gear |
| DS-521-P | RS-521 | 52,000 lbs | 18" Gear |
| DS-581-P | RS-581 | 58,000 lbs | 18" Gear |

Dual Range Models

| Forward Axle | Rear Axle | Axle Capacity | Gear Size |
|--------------|-----------|---------------|-----------|
| DT-461-P | RT-461 | 46,000 lbs | 18" Gear |
| DT-521-P | RT-521 | 52,000 lbs | 18" Gear |
| DT-601-P | RT-601 | 60,000 lbs | 18" Gear |
| DT-651-P | RT-651 | 65,000 lbs | 18" Gear |

Planetary Double Reduction Models

| Forward Axle | Rear Axle | Axle Capacity | Gear Size |
|--------------|-----------|---------------|-----------|
| DP-461(P) | RP-461 | 46,000 lbs | 18" Gear |
| TP-461 | SP-461 | 46,000 lbs | 18" Gear |
| DP-521(P) | RP-521 | 52,000 lbs | 18" Gear |
| TP-521 | SP-521 | 52,000 lbs | 18" Gear |
| DP-601(P) | RP-601 | 60,000 lbs | 18" Gear |
| TP-601 | SP-601 | 60,000 lbs | 18" Gear |
| DP-651(P) | RP-651 | 65,000 lbs | 18" Gear |
| TP-651 | SP-651 | 65,000 lbs | 18" Gear |

Dual Planetary & Double Rduction Model Configurations

These configurations will accomodate a variety of applications and chasis types. Other combinations of Forward and Rear axles are also utilized. Common configurations are illustrated.

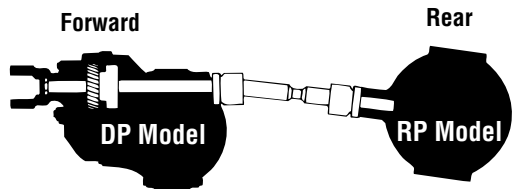
Forward Axles:

- DP - Inter-axle differential w/ pressure lube pump
- TP - Straight drive through shaft / no inter-axle differential

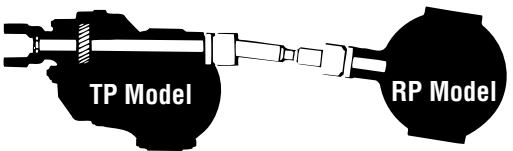
Rear Axles:

- RP - Standard entry
- SP - High entry

Standard Tandems

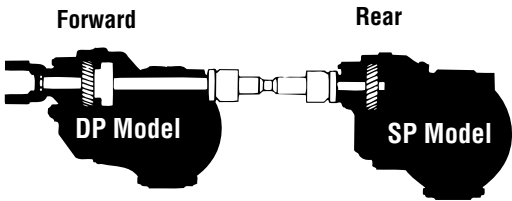


High-entry forward, standard rear w/ inter-axle differential & special lube system

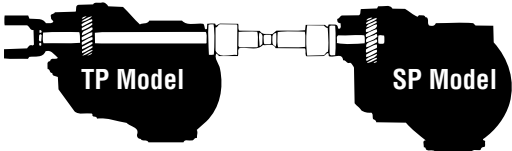


High-entry forward, standard rear w/o inter-axle differential

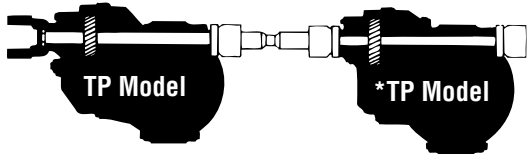
High-entry Tandems



Both high-entry w/ inter-axle differential & special lube system



Both high-entry w/out inter-axle differential



Both high-entry w/out inter-axle differential.
*Using Forward Axle model in Rear Axle application.

How To Use The Illustrated Parts List

Ordering Spicer® Parts

- This parts book is organized in sections according to parts servicing requirements. Use the Contents or page headings and colored tabs to find information.
- Use this book to order parts for your Spicer Axle.
- For convenience, part numbers have been included for all pieces of the carrier assembly. Some of these parts, such as the carrier and caps, are serviced only in kits or assemblies. Part numbers are for your reference only. Those parts not serviced separately are identified with NSS.

Kits and Assemblies

- Kits and Assemblies contain groups of individual or assembled parts developed for optimal replacement or repair of a service problem.
- See the Appendix for detailed information concerning kits applicable to this model.

Abbreviations

- **AR - As Required** - Parts that vary in quantity with each axle. Example: shims
- **NSS - Not Serviced Separately** - Items which can only be purchased in sets, kit form or service assemblies. Example: ring gear
- **RH/LH - Right Hand/Left Hand** - Determined as viewed from behind the vehicle looking forward.
- **RTV - Gasket Compound** - Formed-in-place gasket sealer. It is recommended for use on all surfaces requiring a gasket.
- **Assy - Assembly**
- **Brg - Bearing**
- **Diff - Differential**
- **Hsg - Housing**
- **Inv - Involute**
- **Str - Straight**

Illustrations

- Illustrations show parts in assembly groups.
- Item numbers on illustrations correspond with parts listings on pages that accompany the drawings
- Notes are included on illustrations where additional is needed.

Parts Listings

- Parts listings are defined by parts groupings and are broken down by service assemblies.
- Parts Listings identify a part for servicing with the following categories:
 - **Item** - corresponds with numbers on illustrations for part identification
 - **Description** - specifies part name or description
 - **Quantity (Qty)** - quantity required for assembly
 - **Order Part No.** - service part numbers are broken down by model, type or other applicable information
 - **Notes** - define unique characteristics or requirements
 - **Kits And Assemblies** - order the part numbers indicated

** Other pertinent information is listed in tables or parts listings as required.*

Effectively using a parts listing—Example

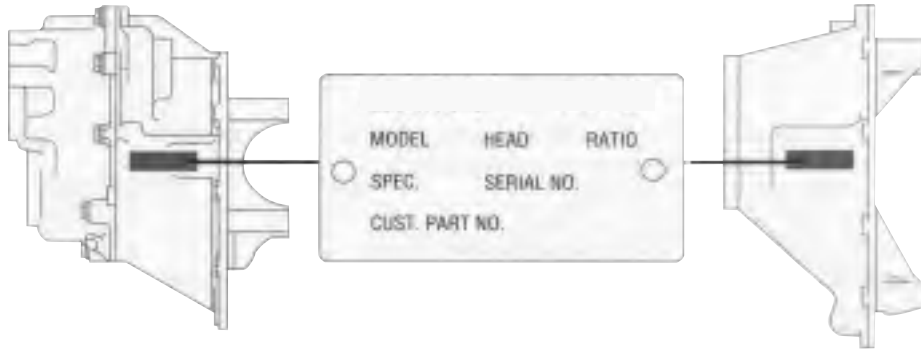
- Follow the example below to locate and order exactly what is required for servicing.

| Match to items on illustration | | Order this quantity for servicing | | Indicates information important to ordering or use |
|--------------------------------|-------------|-----------------------------------|----------------|--|
| Item | Description | Qty | Order Part No. | |
| 84 | Lockwasher | 10 | 90417 | |
| 85 | Pipe Plug | 1 | 90325 | |
| Kits And Assemblies | | | | |
| Basic Overhaul Kit | | 1 | 122437 | Contents Identified with * |
| Oil Seal & Shim Kit | | 1 | 118111 | Includes 33,46,75,78 &RTV |

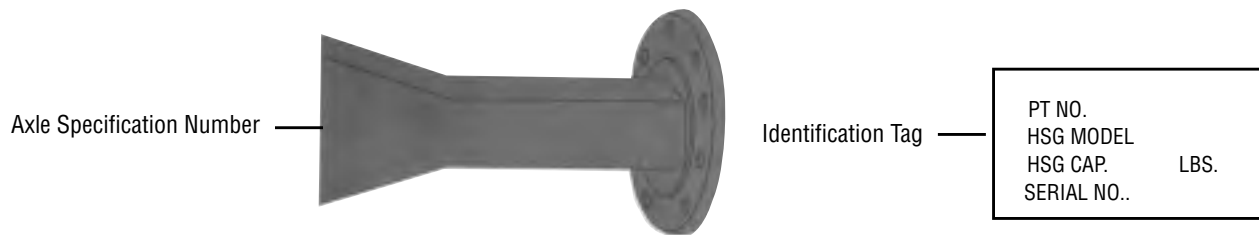
Model Identification

Locating Model Designation Information

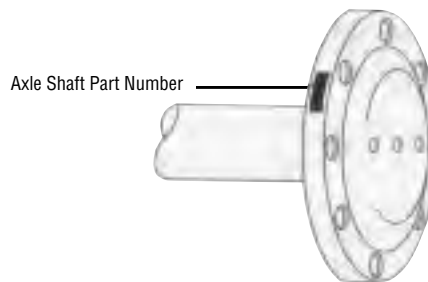
- Axle Model Identification, Part Number and / or Serial Number are located on the axle centerline. This information will help to locate information in this book and to identify the correct parts for servicing.



- Axle Housings are identified by the specification number stamped on the rear right-hand side of the axle housing. This number identifies all components of the axle as built by Spicer, including OEM special requirements such as yoke or flange. Some axles may also include an identification tag as shown.



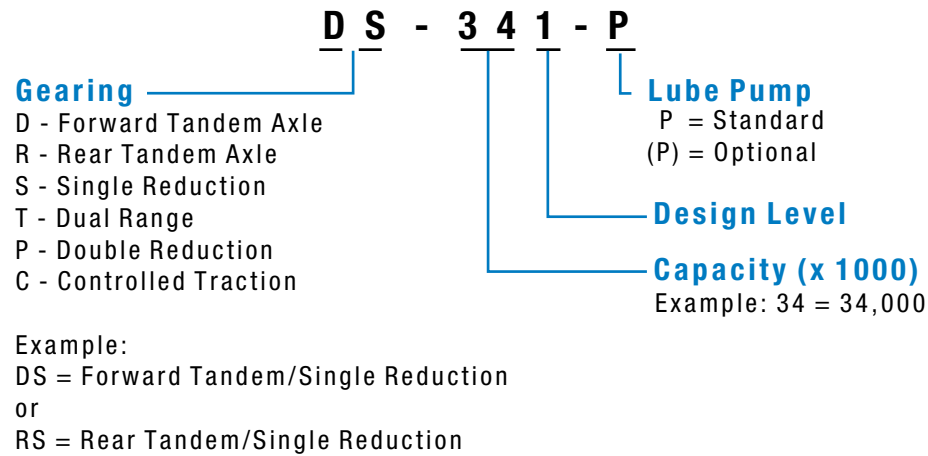
- The axles illustrated in this book are found on a number of different axle shafts, according to OEM specifications.
When ordering replacement axle shafts, note the part number stamped into the flange.



Model Identification

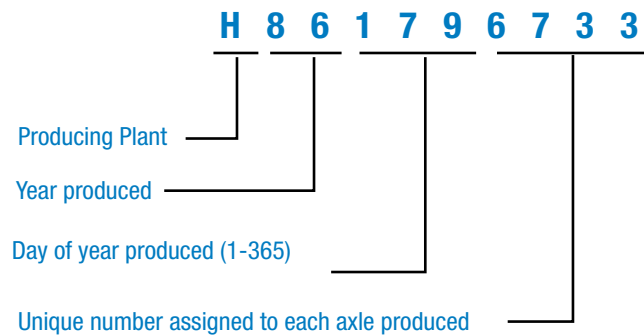
Using Model Designation to Identify Axle Components

- The Axle Model identification number contains information that is important to understand when purchasing service parts or new components. The Model identification number provides important vehicle, capacity and application information and model features. Use this guideline to understand your axle model Identification. If you need assistance, contact your Dana representative.

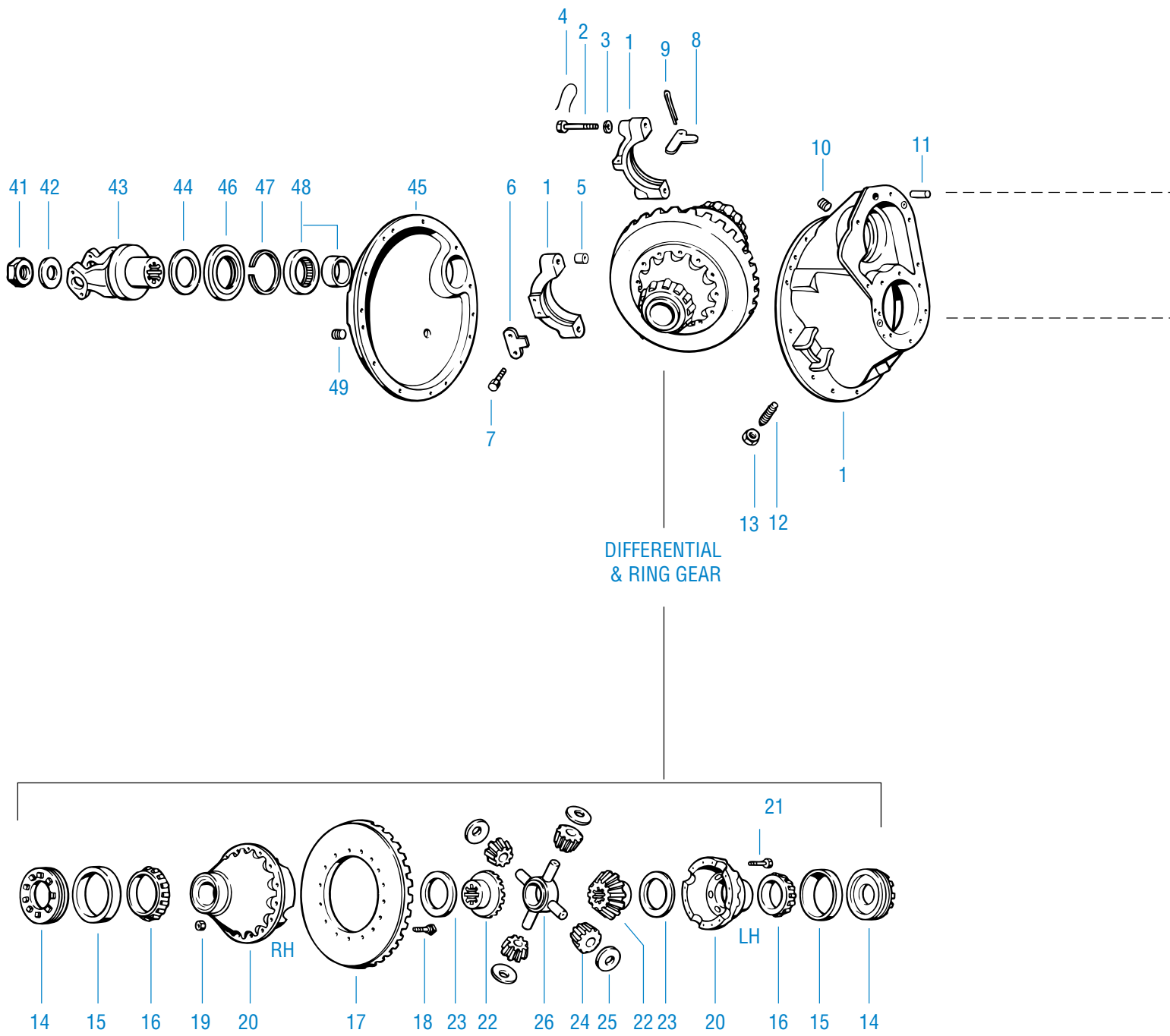


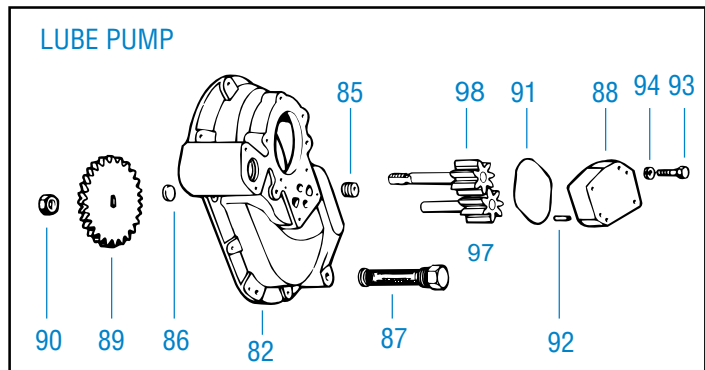
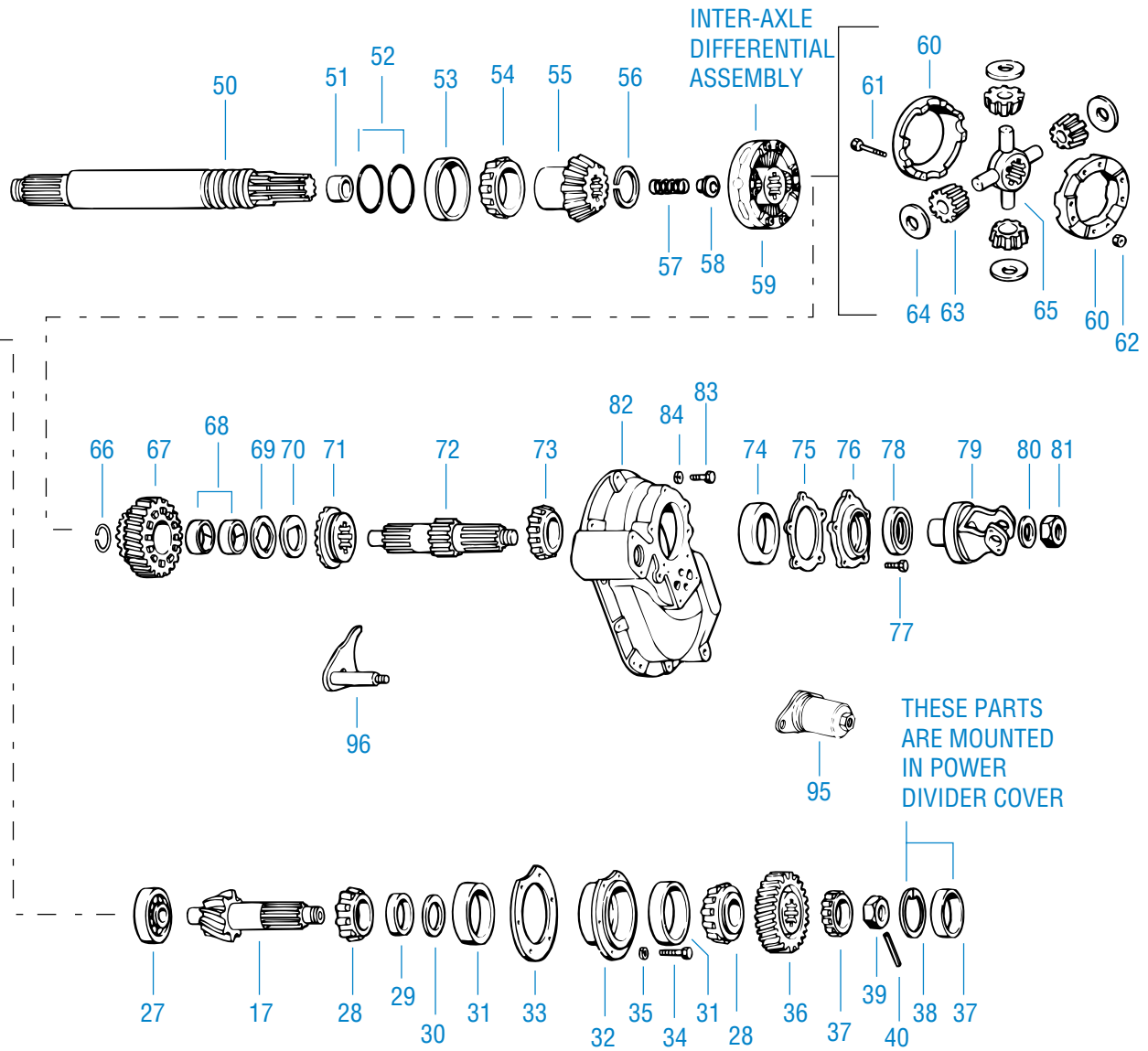
Older Model Serial Numbers

- Units built before May 1987 were identified with a date coding system. Carrier assemblies produced after this date are assigned unique serial numbers. Serial numbers are stamped into the carrier casting or contained on a metal tag attached to the carrier.



Forward Axle





Forward Axle

| Item | Description | Qty | Order Part No. | Notes |
|------|---|-----|----------------|---|
| 1 | Diff. Carrier & Bearing Caps Carrier Casting no. 128282C NSS | 1 | 122474 | Includes items 2-5, 8-14 |
| 2 | Bearing Cap Screw | 4 | 127180 | |
| 3 | Flat Washer | 4 | 32912 | |
| 4 | Lockwire | 4 | 12563 | |
| 5 | Dowel Bushing | 2 | 32730 | |
| 6 | Bearing Cap Adjuster Lock (RH) | | 45448 | See Note 1 |
| 7 | Cap Screw (RH) | | 210601 | See Note 1 |
| 8 | Bearing Cap Adjuster Lock | 2 | 14275 | LH & RH |
| 9 | Cotter Pin | 2 | 90876 | LH & RH |
| 10 | Filler Plug | 1 | 90325 | |
| 11 | Carrier Cover Dowel Pin | 2 | 7641 | |
| 12 | Ring Gear Thrust Screw | 1 | 126193 | |
| 13 | Thrust Screw Jam Nut | 1 | 210184 | |
| 14 | Diff. Bearing Adjuster (RH) | 1 | 39448 | Replaced old #79898 |
| 14 | Diff. Bearing Adjuster (LH) | 1 | 21637 | |
| 15 | Diff. Bearing Cup (RH) | 1 | 19529* | |
| 15 | Diff. Bearing Cone (LH) | 1 | 15092* | |
| 16 | Diff. Bearing Cone (RH) | 1 | 27666* | |
| 16 | Diff. Bearing Cone (LH) | 1 | 27876* | |
| 17 | Ring Gear & Drive Pinion Set | 1 | | See Appendix: Gear & Pinion Information |
| 18 | Bolt | 16 | 67856 | In Kit 70745 |
| 19 | Nut | 16 | 60600 | In Kit 70745 |
| 20 | Diff Case (Flanged Half) NSS | 1 | 88501 | Ratios 3.55-4.11 - order 98610 |
| | | | 126234 | Ratios 4.33-6.67 - order 121845 |
| | Diff. Case (Plain Half) NSS | 1 | 86777 | |
| 21 | Diff. Case Cap Screw | 12 | 88503 | |
| 22 | Diff Side Gear (36 Involute) | 2 | 93401 | |
| 23 | Side Gear Thrust Washer | 2 | 27274* | |
| 24 | Side Pinion | 4 | 86780 | |
| 25 | Side Pinion Thrust Washer | 4 | 86781* | |
| 26 | Spider | 1 | 86778 | |
| 27 | Pinion Pilot Bearing | 1 | 126187* | |
| 28 | Pinion Bearing Cone | 2 | 14218* | |
| 29 | Pinion Bearing Spacer Washer | 1 | 78904* | |
| 30 | Pinion Bearing Spacer | AR | | See Appendix: Gear & Pinion Information |
| 31 | Pinion Bearing Cup | 2 | 14217* | |
| 32 | Pinion Bearing Cage & Cup Assy | 1 | 78914 | Cage #78932, Includes Item 31 |

Note 1: Current Production uses (2) 14275 Adjuster Locks (Item #8) & (2) 90876 Cotter Pins (Item #9). Old Style Adjuster Lock #45448 & Capscrews # 210601 remain available for service.

| Item | Description | Qty | Order Part No. | Notes |
|------|---|-----|--------------------|--|
| 33 | Pinion Bearing Cage Shim | AR | | |
| | .003" | | 45461* | |
| | .005" | | 62829* | |
| | .010" | | 45462* | |
| | .020" | | 62830* | |
| 34 | Bearing Cage Cap Screw | 6 | 62158 | |
| 35 | Lockwasher | 6 | 37207 | |
| 36 | Pinion Helical Gear | 1 | 119995 | |
| 37 | Outer Pinion Bearing & Race | 1 | 78916* | |
| 38 | Outer Pinion Bearing Snap Ring | 1 | 78937* | |
| 39 | Pinion Shaft End Nut | 1 | 126182 | |
| 40 | Pinion Nut Spring Pin | 1 | 118807 | |
| 41 | Output Shaft Nut | 1 | 210508 | |
| 42 | Output Shaft Washer | 1 | 210509 | |
| 43 | Output Shaft Yoke | 1 | | See Appendix:Input/Output Yoke Information |
| 44 | Rear Bearing Retaining Washer | 1 | 78922* | |
| 45 | Axle Housing Cover Assy (Cover 84546) NSS | 1 | 107863 | Includes Items 46-49 |
| 46 | Output Shaft Oil Seal | 1 | 119429* or 210737* | See Appendix:Input/Output Yoke Information |
| 47 | Bearing Snap Ring | 1 | 78937* | |
| 48 | Output Shaft Bearing Race – Inner | 1 | 118787* | Order #78936 Brg Assy |
| 48 | Output Shaft Bearing Race – Outer | 1 | 118788* | Order #78936 Brg Assy |
| 49 | Magnetic Filler Plug | 1 | 75130 | $\frac{7}{8}$ " |
| 49 | Retainer Plug | 1 | 90898 | $\frac{1}{2}$ " |
| 50 | Output Shaft Kit (Shaft 119991, 41 Splines 2.100" dia) NSS | 1 | 122419 | Includes Items 41,42, 51,52,56 |
| 51 | Output Shaft Bushing | 1 | 48922* | |
| 52 | Output Shaft "O" ring | 2 | 78931* | |
| 53 | Output Shaft Bearing Cup (Inner) | 1 | 24328* | |
| 54 | Output Shaft Bearing Cone (Inner) | 1 | 24330* | |
| 55 | Output Shaft Side Gear | 1 | 78911 | |
| 56 | Side Gear Snap Ring | 1 | 85994* | |
| 57 | Output Shaft Compression Spring | 1 | 127095 | |
| 58 | Output Shaft Thrust Bearing | 1 | 51228 | |
| 59 | Inter-axle Diff. Assy | 1 | 121681 | Includes Items 60-65 |
| 60 | Inter-axle Diff Case Kit | 1 | 211252 | Includes Items 60-62 |
| 60 | Case Half NSS | 2 | 126151 | Order 211252 |
| 61 | Case Bolt | 8 | 57636 | |

Note: Item 46 Output Shaft Oil Seal — See Appendix:Input/Output Yoke Information before ordering.

DS461-P
DS581-P

DS521-P

Forward Axle

| Item | Description | Qty | Order Part No. | Notes |
|------|--|-----|--------------------|---|
| 62 | Case Nut | 8 | 57637 | |
| 63 | Side Pinion | 4 | 95218 | |
| 64 | Side Pinion Thrust Washer | 4 | 126180* | |
| 65 | Spider | 1 | 126152 | |
| 66 | Helical Side Gear Snap Ring | 1 | 78909* | |
| 67 | Helical Side Gear & Bushing Assy (Side Gear 113328) NSS | 1 | 113331 | Includes Item 68 |
| 68 | Helical Side Gear Bushing | 2 | 75063* | |
| 69 | Helical Side Gear Thrust Washer | 1 | 79034* | |
| 70 | Helical Side Gear "D" Washer | 1 | 56360* | |
| 71 | Lockout Sliding Clutch | 1 | 119948 | |
| 72 | Input Shaft Kit (Shaft 119990, 46 Splines 2.350" dia.) NSS | 1 | 122418 | Includes Item 81 |
| 73 | Input Shaft Bearing Cone | 1 | 98387* | |
| 74 | Input Shaft Bearing Cup | 1 | 98388* | |
| 75 | Input Bearing Cover Shim | AR | | |
| | .003" | | 78918* | |
| | .005" | | 78919* | |
| | .010" | | 78920* | |
| | .020" | | 113130 | |
| 76 | Input Bearing Cover, Cup & Oil Seal Assy (Cover 111690) NSS | 1 | 111691 | Includes Items 74, 78 |
| 77 | Bearing Cover Cap Screw | 5 | 126243 | |
| 78 | Input Shaft Oil Seal | 1 | 119430* or 210736* | See Appendix:Input/Output Yoke Information |
| 79 | Input Yoke & Slinger | 1 | | See Appendix:Input/Output Yoke Information |
| 80 | Input Shaft Nut Washer | 1 | 126242* | |
| 81 | Input Shaft Nut | 1 | 126155 | |
| 82 | Diff. Carrier Cover Assy | 1 | 117311 | Includes Items 85-86, 37 & 47 (Cover 103526) NSS |
| 83 | Carrier Cover Cap Screw | 8 | 90069 | (short) |
| | | 1 | 9309 | (long) |
| | | 1 | 81855 | (socket head) |

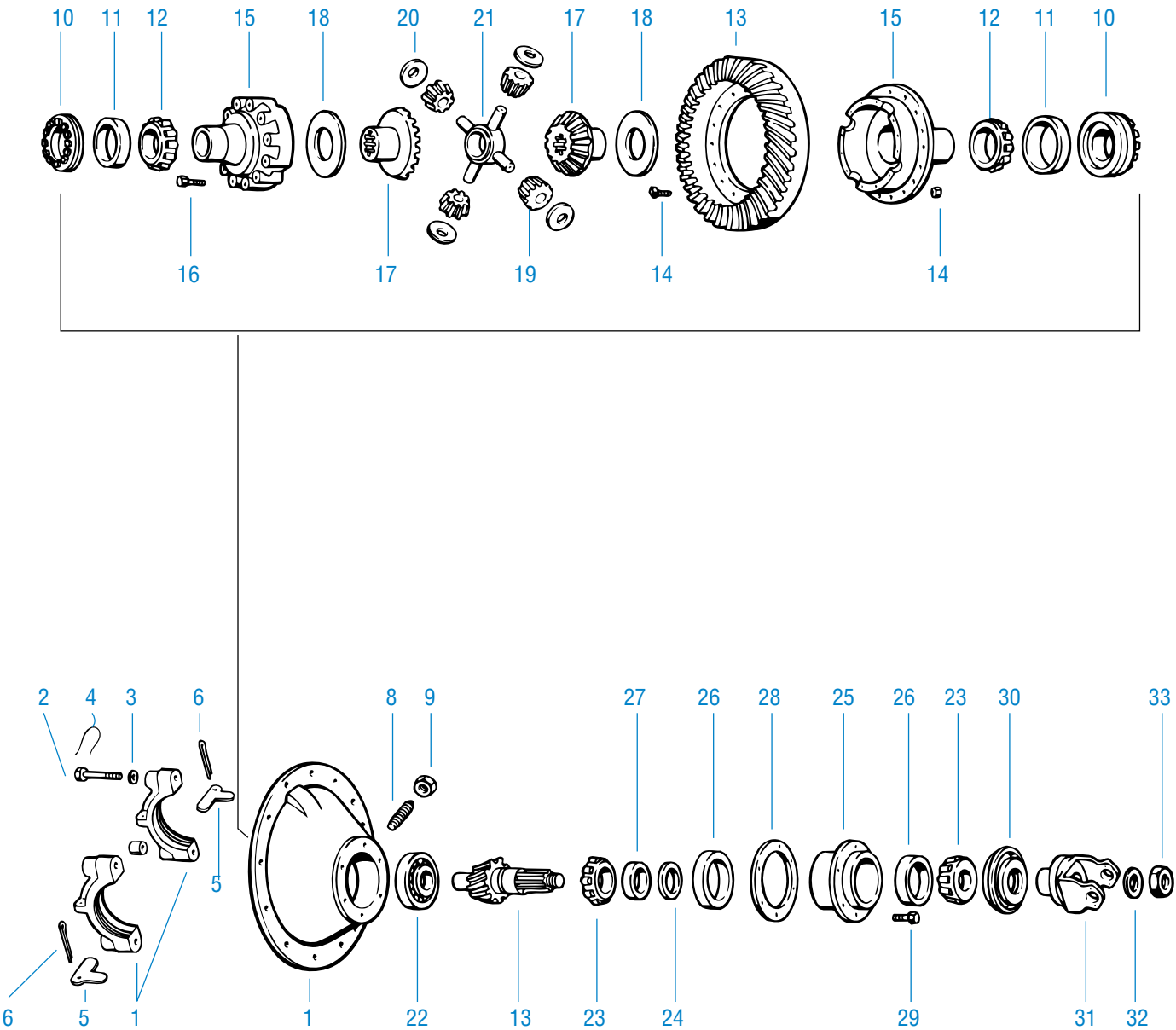
Note: Item 78 Input Shaft Oil Seal — See Appendix:Input/Output Yoke Information before ordering.

| Item | Description | Qty | Order Part No. | Notes |
|-----------------|---------------------------------------|-----|----------------|------------------------------------|
| 84 | Lockwasher | 10 | 90417 | |
| 85 | Pipe Plug | 1 | 90325 | |
| 86 | Expansion Plug | 1 | 9797 | |
| 87 | Magnetic Filter Screen Lube | 1 | 102611* | |
| 88 | Pump Cover | 1 | 102607 | |
| 89 | Pump Drive Gear | 1 | 119946 | |
| 90 | Drive Gear Locknut | 1 | 111451 | |
| 91 | Cover "O" Ring | 1 | 102620* | |
| 92 | Cover Dowel Pin | 2 | 102617 | |
| 93 | Cover Cap Screw | 4 | 102618 | |
| 94 | Lockwasher | 4 | 90419 | |
| 95 | Air Operated Lockout Assy Complete | 1 | 123218 | See Shift System: Lockout Assembly |
| 96 | Shift Fork & Push Rod Assy | 1 | 103529 | See Shift System: Lockout Assembly |
| 97 | Oil Pump Gear- Short | 1 | 102625 | See Below for Complete Lube Pump |
| 98 | Oil Pump Gear - Long | 1 | 111779 | Replacement Kit |
| Gasket Compound | | AR | 107276* | |

Kits And Assemblies

| | | |
|---------------------------------|--------|---|
| Basic Overhaul Kit | 122437 | Contents Identified with * |
| Oil Seal & Shim Kit | 118111 | Includes 33,46,75,78 & RTV |
| Lube Pump Replacement Kit | 121302 | Includes 88-94, 97 & 98 |
| Wheel Diff Case Kit | 98610 | Ratios 3.55-4.11 / Includes Items 20-21 |
| Wheel Diff Case Kit | 121845 | Ratios 4.33-6.67 / Includes Items 20-21 |
| Wheel Diff Side Gear Pinion Kit | 114472 | Includes Items 22-26 |
| Wheel Diff Kit Less Side Gears | 118749 | Includes Items 23-26 |

Rear Axle



| Item | Description | Qty | Order Part No. | Notes |
|------|--|--------|----------------|-------------------------|
| 1 | Diff. Carrier & Bearing Caps Carrier Casting No 127220R | 1 | 122432 | Includes Items 2-4, 7-9 |
| 2 | Bearing Cap Screw | 4 | 127180 | |
| 3 | Flat Washer | 4 | 32912 | |
| 4 | Lockwire | 4 | 12563 | |
| 5 | Bearing Cap Adjuster Lock | 2 | 14275 | |
| 6 | Cotter Pin | 2 | 90876 | |
| 7 | Dowel Bushing | 2 | 32730 | |
| 8 | Ring Gear Thrust Screw | 1 | 126193 | |
| 9 | Thrust Screw Jam Nut | 1 | 210184 | |
| 10 | Diff. Bearing Adjuster (RH) Diff. Bearing Adjuster (LH) | 1 1 | 21637 39448 | |

| Item | Description | Qty | Order Part No. | Notes |
|------|--------------------------------|-----|--------------------|--|
| 11 | Diff. Bearing Cup (RH) | 1 | 15092* | |
| | Diff. Bearing Cup (LH) | 1 | 19529* | |
| 12 | Diff. Bearing Cone (RH) | 1 | 27876* | |
| | Diff. Bearing Cone (LH) | 1 | 27666* | |
| 13 | Ring Gear & Drive Pinion Set | 1 | | See Appendix: Gear & Pinion Information |
| 14 | Bolt | 16 | 67586 | In Kit 70745 |
| | Nut | 16 | 60600 | In Kit 70745 |
| 15 | Diff. Case (Flanged Half) NSS | 1 | 88501 | Ratios 3.55-4.11 - order 98610 |
| | | | 126234 | Ratios 4.33-6.67 - order 121845 |
| | Diff. Case (Plain Half) NSS | 1 | 86777 | |
| 16 | Diff. Case Cap Screw | 12 | 88503 | |
| 17 | Diff. Side Gear | 2 | 93401 | 36 Involute |
| 18 | Side Gear Thrust Washer | 2 | 27274* | |
| 19 | Side Pinion | 4 | 86780 | |
| 20 | Side Pinion Thrust Washer | 4 | 86781* | |
| 21 | Spider | 1 | 86778 | |
| 22 | Pinion Pilot Bearing | 1 | 126187* | |
| 23 | Pinion Bearing Cone (Inner) | 1 | 27239* | |
| | Pinion Bearing Cone (Outer) | 1 | 14218* | |
| 24 | Pinion Bearing Spacer* | AR | | See Appendix: Gear & Pinion Information |
| 25 | Pinion Bearing Cage & Cup Assy | 1 | 210592 | Cage # 210591 Includes Item 26 |
| 26 | Pinion Bearing Cup (Inner) | 1 | 27238* | |
| | Pinion Bearing Cup (Outer) | 1 | 14217* | |
| 27 | Pinion Bearing Spacer Washer | 1 | 31366* | |
| 28 | Pinion Bearing Cage Shim | AR | | |
| | .003" | | 67920* | |
| | .005" | | 67921* | |
| | .010" | | 67922* | |
| | .020" | | 67923* | |
| | .030" | | 67924* | |
| 29 | Bearing Cage Cap Screw | 6 | 113327 | |
| 30 | Oil Seal & Retainer | 1 | 113866* or 210724* | See Appendix:Input/Output Yoke Information |
| 31 | Input Yoke | 1 | | See Appendix:Input/Output Yoke Information |
| 32 | Flat Washer | 1 | 210509 | |
| 33 | Pinion Nut | 1 | 210508 | |
| | Gasket Compound | AR | 107276* | |

Kits And Assemblies

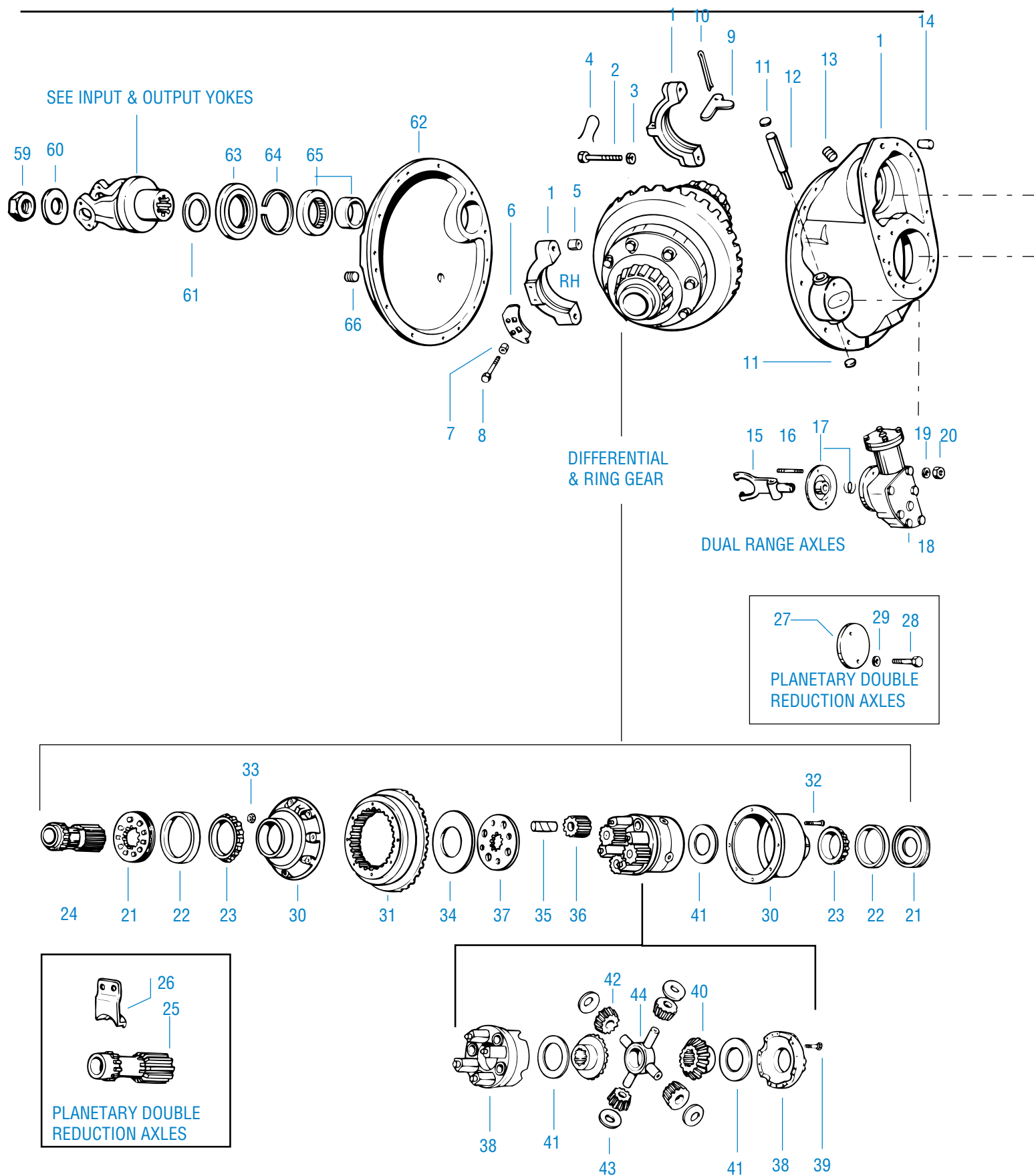
| | | |
|-----------------------------------|---------|---|
| Basic Overhaul Kit | 122434* | Contents identified with * |
| Wheel Diff. Case Kit | 98610 | Ratios 3.55-4.11 / Includes Items 15-16 |
| Wheel Diff. Case Kit | 121845 | Ratios 4.33-6.67 / Includes Items 15-16 |
| Wheel Diff Side Gear & Pinion Kit | 114472 | Includes Items 17-21 |
| Wheel Diff Kit Less Side Gears | 118749 | Includes Items 18-21 |
| Oil Seal & Shim Kit | 122436 | Includes Items 28, 30, & RTV |

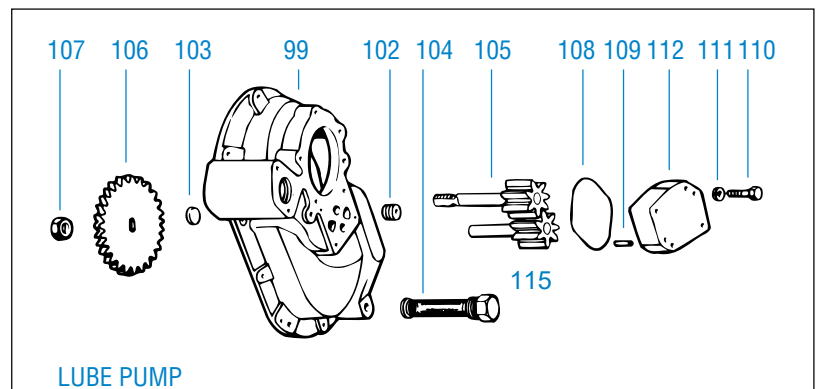
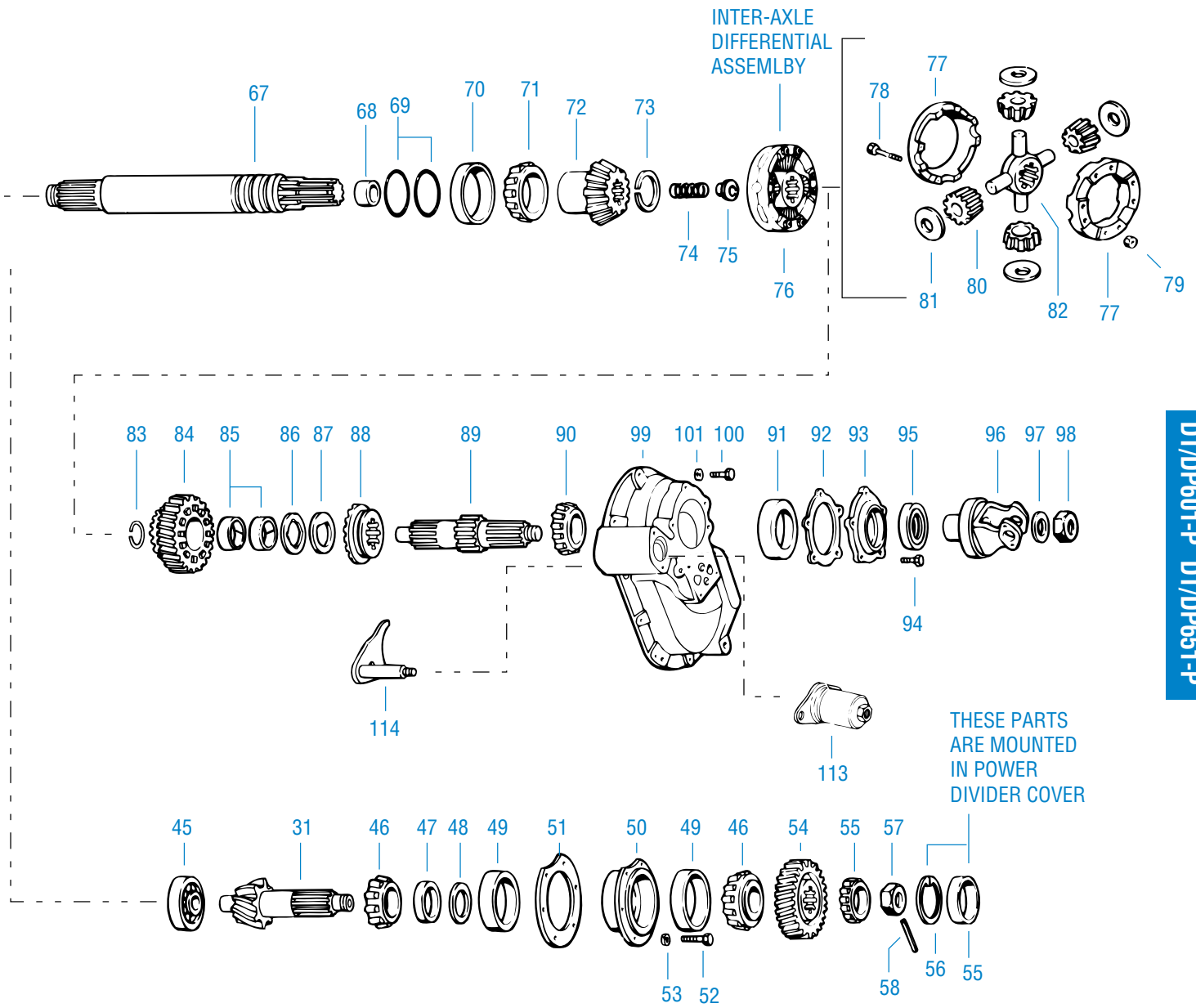
* Note: Pinion Bearing Spacer information is included in the Appendix: Gear & Pinion Information

Note: Item 30 Oil Seal & Retainer — See Appendix:Input/Output Yoke Information before ordering.

Dual Range & Planetary Double Reduction

Forward Axle





DT/DP461-P DT/DP521-P
DT/DP601-P DT/DP651-P

Forward Axle

| Item | Description | Qty | Order Part No. | Notes |
|------|--|-----|----------------|---|
| 1 | Diff. Carrier & Bearing Caps Carrier Casting No 110500 NSS | 1 | 106710 | Includes 2-5, 7, 11-14, 16-17, 19-20, 27 & RTV |
| 2 | Bearing Cap Screw | 4 | 32732 | |
| 3 | Flat Washer | 4 | 32912 | |
| 4 | Lockwire | 4 | 12563 | |
| 5 | Dowel Bushing | 2 | 32730 | |
| 6 | Bearing Cap Adjuster Lock (RH) | 1 | 78926 | |
| 7 | Dowel Bushing (RH) | 2 | 37746 | |
| 8 | Cap Screw (RH) | 2 | 210601 | |
| 9 | Bearing Cap Adjuster Lock (LH) | 1 | 14275 | |
| 10 | Cotter Pin (LH) | 1 | 90876 | |
| 11 | Expansion Plug (Upper) | 1 | 30703* | DT only |
| | Expansion Plug (Lower) | 1 | 9797* | |
| 12 | Shift Fork Shaft & "O" Ring Assy (Shaft 41103 NSS; "O" Ring 113140) | 1 | 113801 | |
| 13 | Filler Plug | 1 | 90325 | |
| 14 | Carrier Cover Dowel Pin | 2 | 7641 | |
| 15 | Shift Fork & Roller Assy | 1 | 84508 | |
| 16 | Shift Fork Mounting Stud | 2 | 119863 | |
| 17 | Shift Fork Seal & Spring Assy | 1 | 119855* | |
| 18 | Shift Unit Assy | 1 | 73503 | |
| 19 | Lockwasher | 2 | 119857 | |
| 20 | Stud Nut | 2 | 63028 | DT only |
| 21 | Diff. Bearing Adjuster (RH) | 1 | 126305 | |
| | Diff. Bearing Adjuster (LH) | 1 | 21637 | |
| 22 | Diff. Bearing Cup (RH) | 1 | 21632* | |
| | Diff. Bearing Cup (LH) | 1 | 15092* | |
| 23 | Diff. Bearing Cone (RH) | 1 | 102660* | |
| | Diff. Bearing Cone (LH) | 1 | 27876* | |
| 24 | Sliding Clutch | 1 | 126255 | |
| 25 | Sun Gear | 1 | 119902 | |
| 26 | Sun Gear Retainer | 1 | 43178 | |
| 27 | Shift Unit Opening Cover | 1 | 45521 | DP only |
| 28 | Cap Screw | 2 | 20807 | |
| 29 | Lockwasher | 2 | 90415 | |
| 30 | Gear Support Case (RH) | 1 | 126301 | |
| | Gear Support Case (LH) | 1 | 108138 | |
| 31 | Ring Gear & Pinion Set | 1 | | |
| 32 | Bolt | 8 | 44358 | |
| 33 | Nut | 8 | 60599 | |

See Appendix: Gear & Pinion Information

In Kit 87955

In Kit 87955

| Item | Description | Qty | Order Part No. | Notes |
|------|---------------------------------|-----|----------------|---|
| 34 | Thrust Washer (RH) | 1 | 43271* | For High-Speed CL Plate |
| 35 | Idler Pinion Pin | 4 | 126302 | |
| 36 | Idler Pinion | 4 | 126306 | |
| 37 | High-Speed Clutch Plate | 1 | 126307 | |
| 38 | Diff. Case w/clutch plate pin | 1 | 126304 | NSS Casting #108139 - order 122417 |
| | Diff. Case (RH) | 1 | 108140 | NSS - order 122417 |
| 39 | Diff. Case Cap Screw | 4 | 96285 | Short |
| | Diff. Case Cap Screw | 8 | 96284 | Long |
| 40 | Diff. Side Gear | 2 | 118959 | 36 Involute |
| 41 | Side Gear Thrust Washer | 2 | 83726* | |
| | Gear Support Thrust Washer | 1 | 83726* | |
| 42 | Side Pinion | 4 | 108142 | |
| 43 | Side Pinion Thrust Washer | 4 | 108145* | |
| 44 | Spider | 1 | 108141 | |
| 45 | Pinion Pilot Bearing | 1 | 126187* | |
| 46 | Pinion Bearing Cone | 2 | 14218* | |
| 47 | Pinion Bearing Spacer Washer | 1 | 78904* | |
| 48 | Pinion Bearing Spacer* | AR | | See Appendix: Gear & Pinion Information |
| 49 | Pinion Bearing Cup | 2 | 14217* | |
| 50 | Pinion Bearing Cage & Cup Assy | 1 | 78914 | Cage (78932) Includes Item 49 |
| 51 | Pinion Bearing Cage Shim | AR | | |
| | .003" | | 45461* | |
| | .005" | | 62829* | |
| | .010" | | 45462* | |
| | .020" | | 62830* | |
| | .030" | | 45463* | |
| 52 | Bearing Cage Cap Screw | 6 | 62158 | |
| 53 | Lockwasher | 6 | 37207 | |
| 54 | Pinion Helical Gear | 1 | 119995 | |
| 55 | Outer Pinion Support Brg & Race | 1 | 78916* | |
| 56 | Outer Pinion Bearing Snap Ring | 1 | 78937* | |
| 57 | Pinion Shaft End Nut | 1 | 126182 | |
| 58 | Pinion Nut Spring Pin | 1 | 118807 | |
| 59 | Output Shaft Nut | 1 | 210508 | |
| 60 | Output Shaft Washer | 1 | 210509 | |
| 61 | Washer - Brg Spacer | 1 | 78922 | |
| 62 | Axle Housing Cover Assy | | | |
| | (Cover 84546) NSS | 1 | 107863 | D461, D521, D601 |
| | Includes Items 63-66 | | | |
| | (Cover 78923) NSS | 1 | 108099 | D651, T651 |

* Note: Pinion Bearing Spacer information is included in the Appendix: Gear & Pinion Information

DT/DP461-P DT/DP521-P
DT/DP601-P DT/DP651-P

Forward Axle

| Item | Description | Qty | Order Part No. | Notes |
|------|--|-----|--------------------|---|
| 63 | Output Shaft Oil Seal | 1 | 119429* or 210737* | See Appendix: Input/Output Yoke Information |
| 64 | Bearing Snap Ring | 1 | 78937* | |
| 65 | Output Shaft Bearing Race - Inner | | 118787* | Order 78936 Brg Assy |
| 65 | Output Shaft Bearing Race - Outer | | 118788* | Order 78936 Brg Assy |
| 66 | Magnetic Filler Plug | 1 | 75130 | $\frac{7}{8}$ " |
| | Retainer Plug | 1 | 90898 | $\frac{1}{2}$ " |
| 67 | Output Shaft Kit (Shaft 119991, 41 splines 2.100" dia.) NSS | 1 | 122419 | Includes Items 59-60, 68, 69, 73 |
| 68 | Output Shaft Bushing | 1 | 48922* | |
| 69 | Output Shaft "O" Ring | 2 | 78931* | |
| 70 | Output Shaft Bearing Cup (Inner) | 1 | 24328* | |
| 71 | Output Shaft Bearing Cone (Inner) | 1 | 24330* | |
| 72 | Output Shaft Side Gear | 1 | 78911 | |
| 73 | Side Gear Snap Ring | 1 | 85994* | |
| 74 | Output Shaft Compression Spring | 1 | 127095 | |
| 75 | Output Shaft Thrust Bearing | 1 | 51228 | |
| 76 | Inter-axle Diff. Assy | 1 | 121681 | Includes Items 77-82 |
| 77 | Case Half (NSS) | 2 | 126151 | Order 211252 kit |
| 78 | Case Bolt | 8 | 57636 | |
| 79 | Case Nut | 8 | 57637 | |
| 80 | Side Pinion | 4 | 95218 | |
| 81 | Side Pinion Thrust Washer | 4 | 126180* | |
| 82 | Spider | 1 | 126152 | |
| 83 | Helical Side Gear Snap Ring | 1 | 78909* | |
| 84 | Helical Side Gear & Bushing Assy (Side Gear 113328) NSS | 1 | 113331 | Includes Item 70 |
| 85 | Helical Side Gear Bushing | 2 | 75063* | |
| 86 | Helical Side Gear Thrust Washer | 1 | 79034* | |
| 87 | Helical Side Gear "D" Washer | 1 | 56360* | |
| 88 | Lockout Sliding clutch | 1 | 119948 | |
| 89 | Input Shaft Kit (Shaft 119990, 46 Splines 2.350" dia.) NSS | 1 | 122418 | Includes Item 98 |
| 90 | Input Shaft Bearing Cone | 1 | 98387* | |
| 91 | Input Shaft Bearing Cup | 1 | 98388* | |
| 92 | Input Bearing Cover Shim .003" | AR | 78918* | |
| | .005" | | 78919* | |
| | .010" | | 78920* | |
| | .020" | | 113130* | |
| 93 | Input Brg. Cvr, Cup/Oil Seal Assy (Cover 111690) NSS | 1 | 111691 | Includes Items 91, 95 |
| 94 | Bearing Cover Cap Screw | 5 | 126243 | |
| 95 | Input Shaft Oil Seal | 1 | 119430* or 210736* | See Appendix: Input/Output Yoke Information |
| 96 | Input Yoke & Slinger | 1 | | See Appendix: Input/Output Yoke Information |

| Item | Description | Qty | Order Part No. | Notes |
|-----------------|--|-----|----------------|---|
| 97 | Input Shaft Nut Washer | 1 | 126242* | |
| 98 | Input Shaft Nut | 1 | 126155 | |
| 99 | Diff. Carrier Cover Assy (Cover 103526) NSS | 1 | 103536 | Includes Items 102-103 |
| 100 | Carrier Cover Cap Screw | 8 | 90069 | (short) |
| | | 1 | 9309 | (long) |
| | | 1 | 81855 | (socket head) |
| 101 | Lockwasher | 10 | 90417 | |
| 102 | Pipe Plug | 1 | 90325 | |
| 103 | Expansion Plug | 1 | 9797 | |
| 104 | Magnetic Filter Screen | 1 | 102611* | |
| 105 | Oil Pump Gear - Long | 1 | 111779 | See Below for Complete Lube Pump Replacement kit |
| 106 | Pump Drive Gear | 1 | 119946 | |
| 107 | Drive Gear Locknut | 1 | 111451 | |
| 108 | Cover "O" Ring | 1 | 102620* | |
| 109 | Cover Dowel Pin | 2 | 102617 | |
| 110 | Cover Cap Screw | 4 | 102618 | |
| 111 | Lockwasher | 4 | 90419 | |
| 112 | Lube Pump Cover | 1 | 102607 | |
| 113 | Air-Oper. Lockout Assy/Comp. | 1 | 123218 | See Shift System: Lockout Assy |
| 114 | Shift Fork & Push Rod Assy | 1 | 103529 | See Shift System: Lockout Assy |
| 115 | Oil Pump Gear- Short | 1 | 102625 | See Below for Complete Lube Pump Replacement Kit |
| Gasket Compound | | AR | 107276* | |

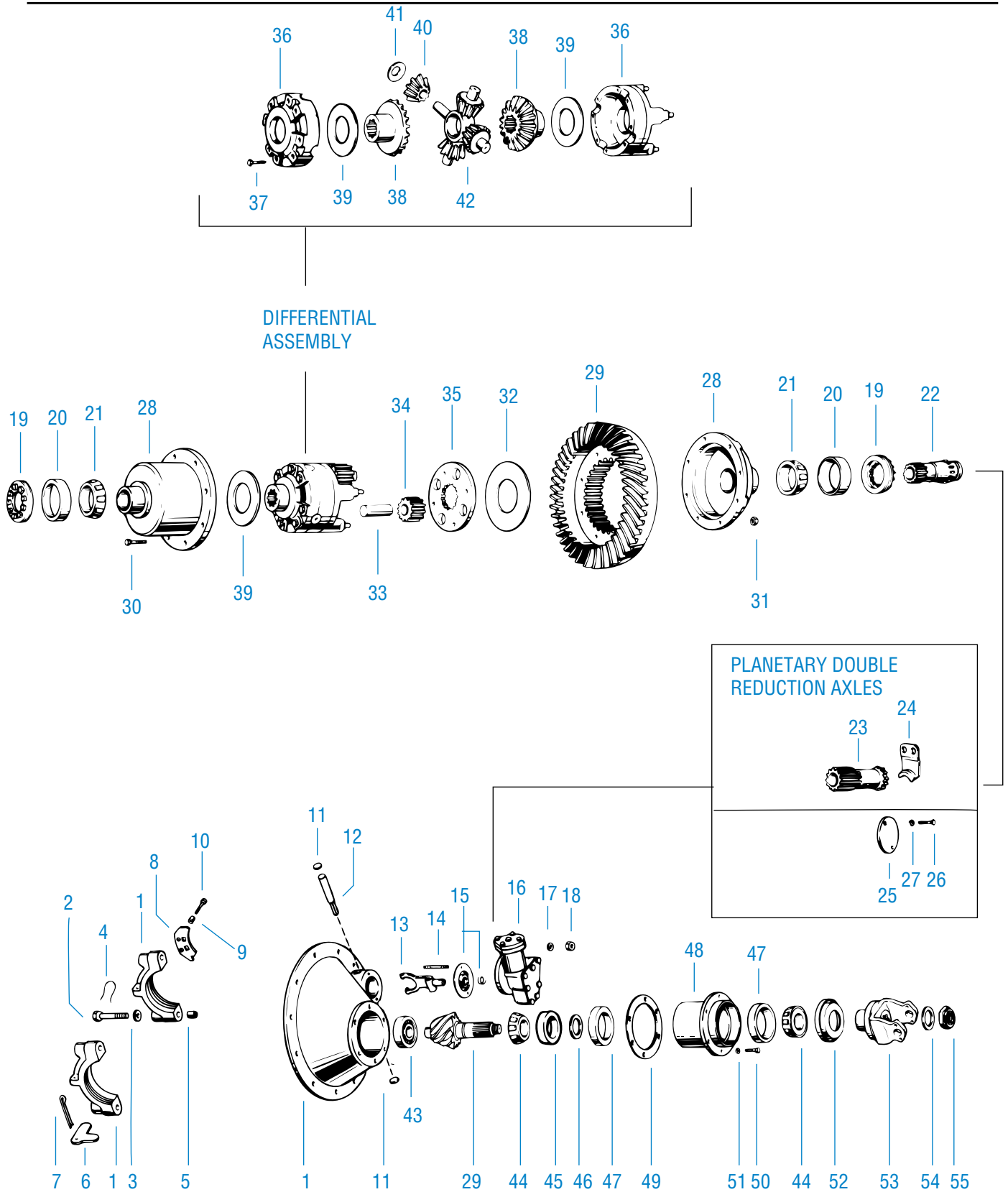
Kits And Assemblies

| | | |
|------------------------------------|---------|---|
| Basic Overhaul Kit | 122421* | Contents identified with * |
| Wheel Diff. Case Kit | 122417 | Includes Items 38-39 |
| Wheel Diff. Side Gear & Pinion Kit | 119393 | Includes Items 40-44 |
| Wheel Diff kit Less Side Gears | 118751 | Includes Items 41-44 |
| Oil Seal & Shim Kit | 118119 | Includes Items 17, 51, 63, 92, 95 & RTV |
| Sliding Clutch Kit - DT Models | 122420 | Includes Items 21 (RH), 24, 34 & 37 |
| Sun Gear Kit - DP Models | 122620 | Includes Items 21 (RH), 25, 34 & 37 |
| Ring Gear Bolt & Nut Kit | 87955 | Includes Items 32-33 |
| Lube Pump Replacement Kit | 121302 | Includes 105-112 & 115 |
| Inter-axle Diff. Case Kit | 211252 | Includes 77-79 |

DT/DP461-P DT/DP521-P
DT/DP601-P DT/DP651-P

Dual Range & Planetary Double Reduction

Rear Axle



| Item | Description | Qty | Order Part No. | Notes |
|------|--|-----|----------------|---|
| 1 | Diff. Carrier & Bearing Caps Carrier Casting No 127218R NSS | 1 | 98590 | Includes Items 2-5, 9, 11-12, 14-15, 17-18, 25 & RTV |
| 2 | Bearing Cap Screw | 2 | 32732 | |
| | | 2 | 127180 | |
| 3 | Flat Washer | 4 | 32912 | |
| 4 | Lockwire | 4 | 12563 | |
| 5 | Dowel Bushing | 2 | 32730 | |
| 6 | Bearing Cap Adjuster Lock (RH) | 1 | 14275 | |
| 7 | Cotter Pin (RH) | 1 | 90876 | |
| 8 | Bearing Cap Adjuster Lock (LH) | 1 | 78926 | |
| 9 | Dowel Bushing | 2 | 37746 | For Bearing Adjuster Locks |
| 10 | Adjuster Lock Cap Screw | 2 | 210601 | |
| 11 | Expansion Plug (Upper) | 1 | 30703* | |
| | Expansion Plug (Lower) | 1 | 9797* | |
| 12 | Shift Fork Shaft & "O" Ring Assy (Shaft 41103 NSS; "O" Ring 113140) | 1 | 113801 | RT only |
| 13 | Shift Fork & Roller Assy | 1 | 84508 | RT only |
| 14 | Shift Fork Mounting Stud | 2 | 119863 | RT only |
| 15 | Shift Fork Seal & Spring Assy | 1 | 119855* | RT only |
| 16 | Shift Unit Assy | 1 | 73507 | RT only |
| 17 | Flat Washer | 2 | 119857 | RT only |
| 18 | Stud Nut | 2 | 63028 | RT only |
| 19 | Diff. Bearing Adjuster (RH) | 1 | 21637 | |
| | Diff. Bearing Adjuster (LH) | 1 | 126305 | |
| 20 | Diff. Bearing Cup (RH) | 1 | 15092* | |
| | Diff. Bearing Cup (LH) | 1 | 21632* | |
| 21 | Diff. Bearing Cone (RH) | 1 | 27876* | |
| | Diff. Bearing Cone (LH) | 1 | 102660* | |
| 22 | Sliding Clutch | 1 | 126255 | RT only |
| 23 | Sun Gear | 1 | 119902 | RP only |
| 24 | Sun Gear Retainer | 1 | 43178 | RP only |
| 25 | Shift Unit Opening Cover | 1 | 45521 | RP only |
| 26 | Cap Screw | 2 | 20807 | RP only |
| 27 | Lockwasher | 2 | 90415 | RP only |
| 28 | Gear Support Case (RH) | 1 | 108138 | |
| | Gear Support Case (LH) | 1 | 126301 | |

RT/RP461
RT/RP601
RT/RP521
RT/RP651

Rear Axle

| Item | Description | Qty | Order Part No. | Notes |
|-----------------|--------------------------------|-----|--------------------|--|
| 29 | Ring Gear & Drive Pinion Set | 1 | | See Appendix: Gear & Pinion Information |
| 30 | Bolt | 8 | 44358 | In Kit 87955 |
| 31 | Nut | 8 | 60599 | In Kit 87955 |
| 32 | Thrust Washer (RH) | 1 | 43271* | For High-Speed Clutch Plate |
| 33 | Idler Pinion Pin | 4 | 126302 | |
| 34 | Idler Pinion | 4 | 126306 | |
| 35 | High-Speed Clutch Plate | 1 | 126307 | |
| 36 | Diff. Case w/clutch plate pin | 1 | 126304 | NSS Casting #108139 |
| | Diff. Case (RH) | 1 | 108140 | NSS |
| 37 | Diff. Case Cap Screw (short) | 4 | 96285 | |
| | Diff. Case Cap Screw (long) | 8 | 96284 | |
| 38 | Diff. Side Gear | 2 | 118959 | 36 Involute |
| 39 | Side Gear Thrust Washer | 2 | 83726* | |
| | Gear Support Thrust Washer | 1 | 83726* | |
| 40 | Side Pinion | 4 | 108142 | |
| 41 | Side Pinion Thrust Washer | 4 | 108145* | |
| 42 | Spider | 1 | 108141 | |
| 43 | Pinion Pilot Bearing | 1 | 126187* | |
| 44 | Pinion Bearing Cone (Inner) | 1 | 27239* | |
| | Pinion Bearing Cone (Outer) | 1 | 14218* | |
| 45 | Pinion Bearing Spacer Washer | 1 | 31366* | |
| 46 | Pinion Bearing Spacer* | AR | | See Appendix: Gear & Pinion Information |
| 47 | Pinion Bearing Cup (Inner) | 1 | 27238* | |
| | Pinion Bearing Cup (Outer) | 1 | 14217* | |
| 48 | Pinion Bearing Cage & Cup Assy | 1 | 210592 | Cage # 210591 NSS Includes Item 47 |
| 49 | Pinion Bearing Cage Shim | AR | | |
| | .003" | | 67920* | |
| | .005" | | 67921* | |
| | .010" | | 67922* | |
| | .020" | | 67923* | |
| | .030" | | 67924* | |
| 50 | Bearing Cage Cap Screw | 6 | 113327 | |
| 51 | Lockwasher | 6 | 90422 | |
| 52 | Output Shaft Oil Seal | 1 | 113866* or 210724* | See Appendix:Input/Output Yoke Information |
| 53 | Input Yoke | 1 | | See Appendix:Input/Output Yoke Information |
| 54 | Flat Washer | 1 | 210509 | |
| 55 | Pinion Nut | 1 | 210508 | |
| Gasket Compound | | AR | 107276* | |

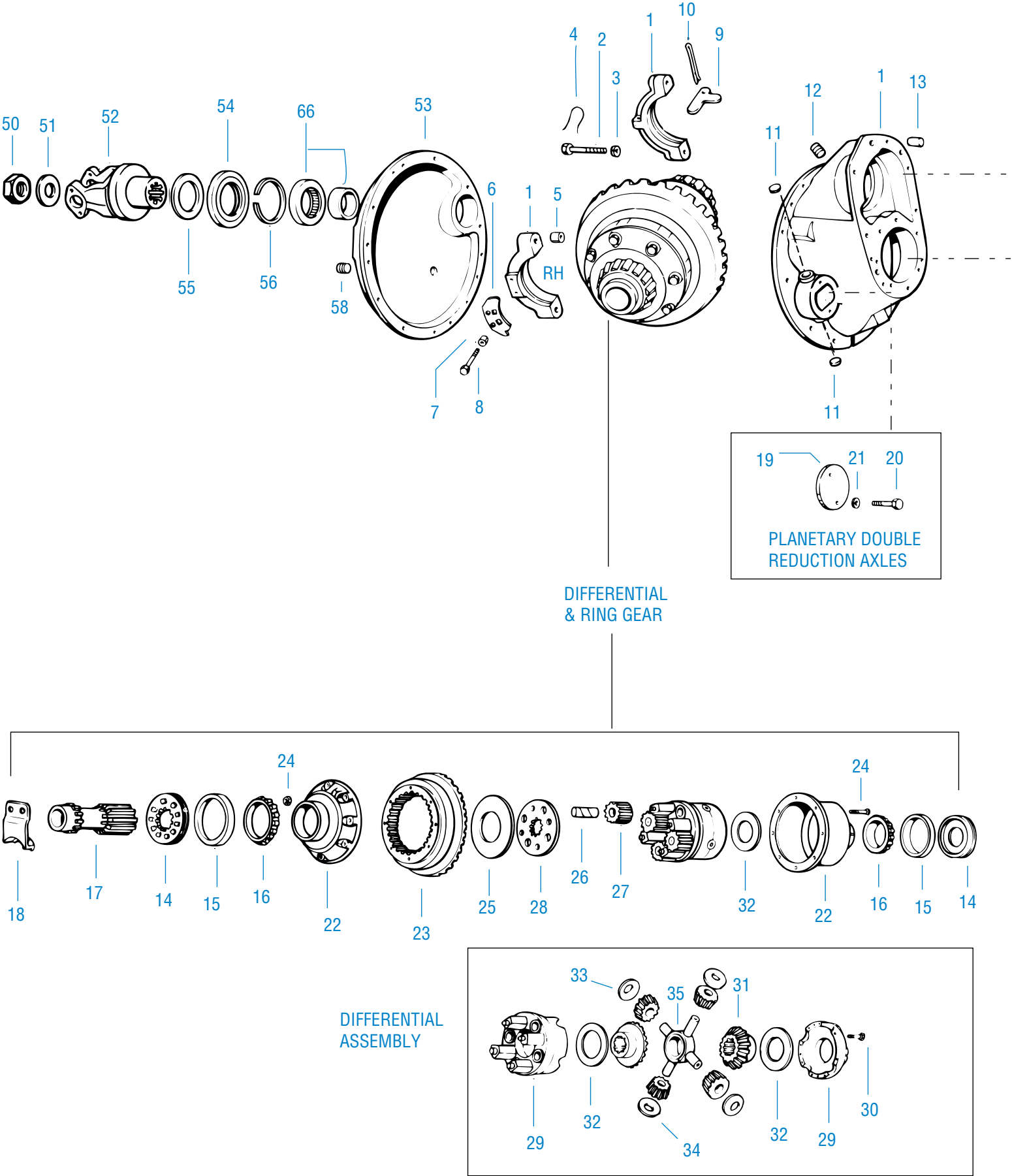
Note: Pinion Bearing Spacer information is found in Appendix: Gear & Pinion Information

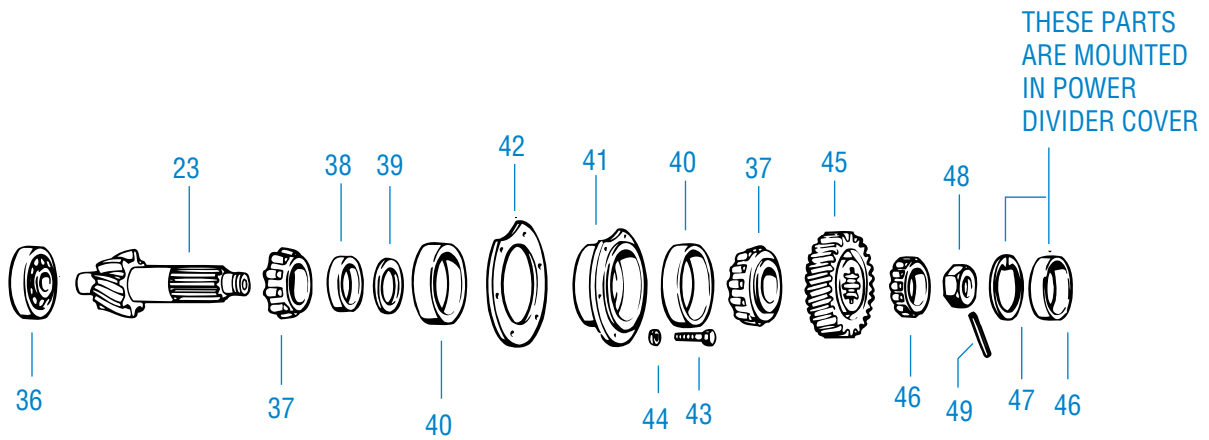
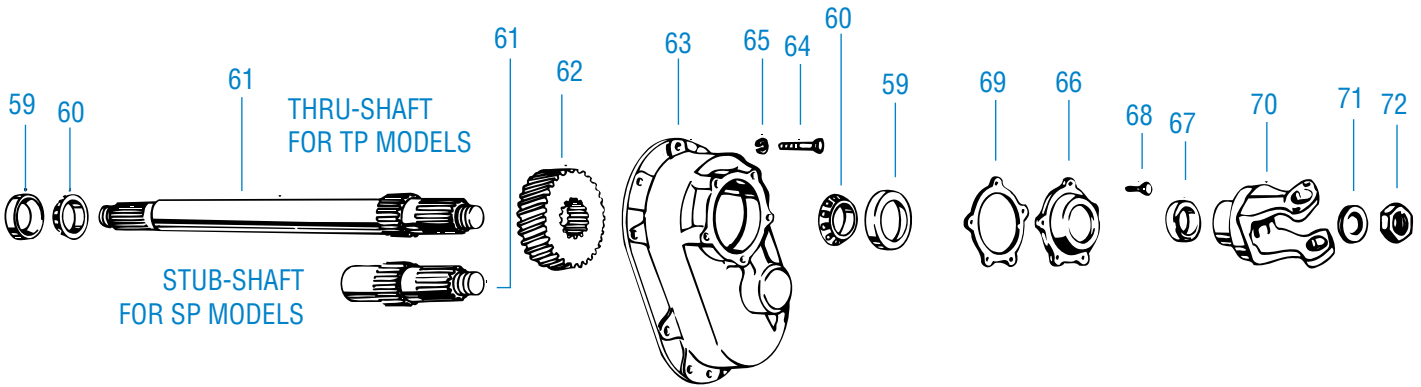
Kits And Assemblies

| | | |
|-----------------------------------|---------|-------------------------------------|
| Basic Overhaul Kit | 122424* | Contents identified with * |
| Wheel Diff. Case Kit | 122417 | Includes Items 36-37 |
| Wheel Diff Side Gear & Pinion Kit | 119393 | Includes Items 38-42 |
| Wheel Diff Less Side Gear | 118751 | Includes Items 39-42 |
| Oil Seal & Shim Kit | 122425 | Includes Items 15, 49, 52 & RTV |
| Sliding Clutch Kit | 122420 | Includes Items 19 (LH), 22, 32 & 35 |
| Sun Gear Kit | 122620 | Includes Items 19 (LH), 23, 32 & 35 |
| Ring Gear Bolt & Nut Kit | 87955 | |

RT/RP461
RT/RP601
RT/RP521
RT/RP651

Forward Axle





TP/SP461
TP/SP601
TP/SP521
TP/SP651

Forward Axle

| Item | Description | Qty | Order Part No. | Notes |
|------|---|-----|----------------|--|
| 1 | Diff. Carrier & Bearing Caps Carrier Casting No 110500 NSS | 1 | 106710 | Includes Items 2-5, 7, 11-13, 19 & RTV Sealant |
| 2 | Bearing Cap Screw | 4 | 32732 | |
| 3 | Flat Washer | 4 | 32912 | |
| 4 | Lockwire | 4 | 12563 | |
| 5 | Dowel Bushing | 2 | 32730 | |
| 6 | Bearing Cap Adjuster Lock (RH) | 1 | 78926 | |
| 7 | Dowel Bushing (RH) | 2 | 37746 | |
| 8 | Cap Screw (RH) | 2 | 210601 | |
| 9 | Bearing Cap Adjuster Lock (LH) | 1 | 14275 | |
| 10 | Cotter Pin (LH) | 1 | 90876 | |
| 11 | Expansion Plug (Upper) | 1 | 30703 | |
| | Expansion Plug (Lower) | 1 | 9797 | |
| 12 | Filler Plug | 1 | 90325 | |
| 13 | Carrier Cover Dowel Pin | 2 | 7641 | |
| 14 | Diff. Bearing Adjuster (RH) | 1 | 126305 | |
| | Diff. Bearing Adjuster (LH) | 1 | 21637 | |
| 15 | Diff. Bearing Cup (RH) | 1 | 21632 | |
| | Diff. Bearing Cup (LH) | 1 | 15092 | |
| 16 | Diff. Bearing Cone (RH) | 1 | 102660 | |
| | Diff. Bearing Cone (LH) | 1 | 27876 | |
| 17 | Sun Gear | 1 | 119902 | |
| 18 | Sun Gear Retainer | 1 | 43178 | |
| 19 | Shift Unit Opening Cover | 1 | 45521 | |
| 20 | Cap Screw | 2 | 20807 | |
| 21 | Lockwasher | 2 | 90415 | |
| 22 | Gear Support Case (RH) | 1 | 126301 | |
| | Gear Support Case (LH) | 1 | 108138 | |
| 23 | Ring Gear & Drive Pinion Set | 1 | | |
| 24 | Bolt | 8 | 44358 | |
| 24 | Nut | 8 | 60599 | |
| 25 | Thrust Washer (RH) | 1 | 43271 | See Appendix: Gear & Pinion Information In Kit 87955 In Kit 87955 For High-Speed CL Plate |
| 26 | Idler Pinion Pin | 4 | 126302 | |
| 27 | Idler Pinion | 4 | 126306 | |
| 28 | High-Speed Clutch Plate | 1 | 126307 | |
| 29 | Diff. Case w/clutch plate pin | 1 | 126304 | |
| | Diff. Case (RH) | 1 | 108140 | |
| 30 | Diff. Case Cap Screw | 4 | 96285 | |
| | Diff. Case Cap Screw | 8 | 96284 | |
| 31 | Diff. Side Gear | 2 | 118959 | |
| | | | | NSS Casting #108139 |
| | | | | NSS |
| | | | | Short |
| | | | | Long |
| | | | | 36 Involute |

| Item | Description | Qty | Order Part No. | Notes |
|------|---|-----|------------------|--|
| 32 | Side Gear Thrust Washer | 2 | 83726 | |
| | Gear Support Thrust Washer | 1 | 83726 | |
| 33 | Side Pinion | 4 | 108142 | |
| 34 | Side Pinion Thrust Washer | 4 | 108145 | |
| 35 | Spider | 1 | 108141 | |
| 36 | Pinion Pilot Bearing | 1 | 126187 | |
| 37 | Pinion Bearing Cone | 2 | 14218 | |
| 38 | Pinion Bearing Spacer Washer | 1 | 78904 | |
| 39 | Pinion Bearing Spacer* | AR | | See Appendix: Gear & Pinion Information |
| 40 | Pinion Bearing Cup | 2 | 14217 | |
| 41 | Pinion Bearing Cage & Cup Assy | 1 | 78914 | Cage (78932) Includes Item 40 |
| 42 | Pinion Bearing Cage Shim | AR | | |
| | .003" | | 45461 | |
| | .005" | | 62829 | |
| | .010" | | 45462 | |
| | .020" | | 62830 | |
| | .030" | | 45463 | |
| 43 | Bearing Cage Cap Screw | 6 | 62158 | |
| 44 | Lockwasher | 6 | 37207 | |
| 45 | Pinion Helical Gear | 1 | 119997 | 1:1 Ratio |
| | Must be used with Helical Side | | | |
| | Gear of same ratio | 1 | 119998 | 1.2:1 Ratio Old #98392 |
| 46 | Outer Pinion Support Bearing & Race | 1 | 78916 | |
| 47 | Outer Pinion Bearing Snap Ring | 1 | 78937 | |
| 48 | Pinion Shaft End Nut | 1 | 126182 | |
| 49 | Pinion Nut Spring Pin | 1 | 118807 | |
| 50 | Output Shaft Nut | 1 | 210508 | TP only |
| 51 | Output Shaft Washer | 1 | 210509 | TP only |
| 52 | Output Yoke | 1 | | See Appendix:Input/Output Yoke Information |
| 53 | Axle Housing Cover Assy - Not Sold Separately (NSS): | | | |
| | Cover 78923 (NSS) | 1 | 108099 | TP651 Includes Items 54, 56-58 |
| | Cover 84546 (NSS) | 1 | 107863 | TP521, TP601 Includes Items 54, 56-58 |
| | Cover 80269 (NSS) | 1 | 98276 | SP521, SP601, SP651 |
| 54 | Output Shaft Oil Seal | 1 | 119429or 210737* | See Appendix:Input/Output Yoke Information |
| | | | | TP only |
| 55 | Rear Bearing Retaining Washer | 1 | 78922 | TP only |
| 56 | Bearing Snap Ring | 1 | 78937 | TP only |
| 57 | Output Shaft Bearing Race - Inner | | 118787 | TP only, Order 78936 Brg Assy |
| 57 | Output Shaft Bearing Race - Outer | 1 | 118788 | TP only, Order 78936 Brg Assy |
| 58 | Magnetic Filler Plug | 1 | 75130 | $\frac{7}{8}$ " |
| | Retainer Plug | 1 | 90898 | $\frac{1}{2}$ " |
| 59 | Input Shaft Bearing Cup (Inner) | 1 | 98388 | |
| | Input Shaft Bearing Cup (Outer) | 1 | 98385 | Included with Item No. 66 |
| 60 | Input Shaft Bearing Cone (Inner) | 1 | 98387 | |
| | Input Shaft Bearing Cone (Outer) | 1 | 98384 | |

Note: Pinion Bearing Spacer information is found in Appendix: Gear & Pinion Information

Forward Axle

| Item | Description | Qty | Order Part No. | Notes |
|-----------------|-------------------------------------|-----|------------------|--|
| 61 | Thru Input Shaft | 1 | 214297 | TP / Note 1 (Includes Items 50, 72) |
| | Stub Input Shaft | 1 | 119992 | SP / 16 Splines, 2.115" |
| 62 | Helical Drive Gear | 1 | 98389 | 1:1 Ratio |
| | Must be used with Pinion Helical | | | |
| | Gear of same ratio | | 98391 | 1.2:1 Ratio |
| 63 | Diff. Carrier Cover Assy | 1 | 107275 | Includes 46-47, 59 inner cup |
| | (Cover 107274) NSS | | | |
| 64 | Carrier Cover Cap Screw | 9 | 90069 | (short) |
| | | 1 | 9309 | (long) |
| 65 | Lockwasher | 10 | 90417 | |
| 66 | Input Bearing Cover Cup & Seal Assy | | | |
| | (Cover 98380) NSS | 1 | 98382 | Includes Items 59, 67 |
| 67 | Input Shaft Oil Seal | 1 | 119430 or 210736 | See Appendix:Input/Output Yoke Information |
| 68 | Bearing Cover Cap Screw | 5 | 113324 | |
| 69 | Input Bearing Cover Shim | AR | | |
| | .003" | | 78918 | |
| | .005" | | 78919 | |
| | .010" | | 78920 | |
| | .020" | | 113130 | |
| 70 | Input Yoke & Slinger | 1 | | See Appendix:Input/Output Yoke Information |
| 71 | Input Shaft Nut Washer | 1 | 126242 | |
| 72 | Input Shaft Nut | 1 | 126155 | Metric Nut |
| Gasket Compound | | AR | 107276 | |

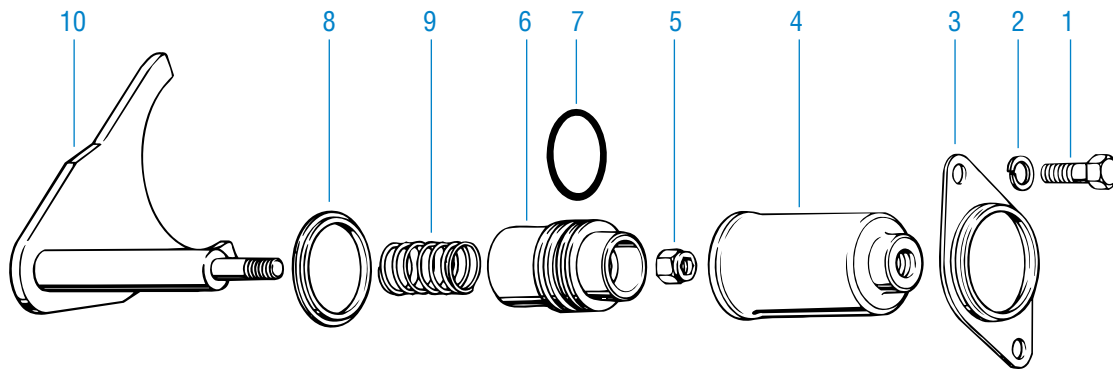
Kits And Assemblies

| | | | |
|------------------------------------|--------|----------------------------|------|
| Ring Gear Bolt & Nut Kit | 87955 | Includes Items 24 | |
| Wheel Diff. Case Kit | 22417 | Includes Items 29-30 | |
| Wheel Diff. Side Gear & Pinion Kit | 119393 | Includes Items 31-35 | |
| Wheel Diff. Kit Less Side Gears | 118751 | Includes Items 32-35 | |
| Oil Seal & Shim Kit (TP only) | 118111 | Includes Items 42, 54, 67, | 69 & |
| RTV | | | |

NOTE 1: In July 1992 the 214297 Thru Shaft Input Kit replaced old P/N 98394. The 98394 has 18 splines, the 119993 shaft inside the 214297 has 49 splines. When the 214297 kit is used, both input and output yokes must also be updated. The 98394 is no longer made.

Differential Lockout Assembly

Current Production Model



| Item | Part Name | Qty | Order Part No. | Remarks |
|------|-----------------------------|-----|----------------|---------|
| 1 | Cap Screw | 2 | 210381 | |
| 2 | Lockwasher | 2 | 90415 | |
| 3 | Mounting Bracket | 1 | 127675 | |
| 4 | Piston Housing | 1 | 119923 | |
| 5 | Locknut | 1 | 128160 | |
| 6 | Piston | 1 | 119912 | |
| 7 | Piston "O" Ring | 1 | 210180 | |
| 8 | Shoulder Washer | 1 | 210452 | |
| 9 | Compression Spring | 1 | 31038 | |
| 10 | Shift Fork & Push Rod Assy. | 1 | 103529 | |
| | Gasket Compound | AR | 107276 | |

Kits And Assemblies

| | | |
|----------------------------|--------|---------------------|
| Air-Operated Lockout Assy. | 123218 | Includes Items 1-10 |
| Repair Kit | 211198 | Includes Items 5-9 |
| Piston Kit | 121333 | Includes Items 3-8 |

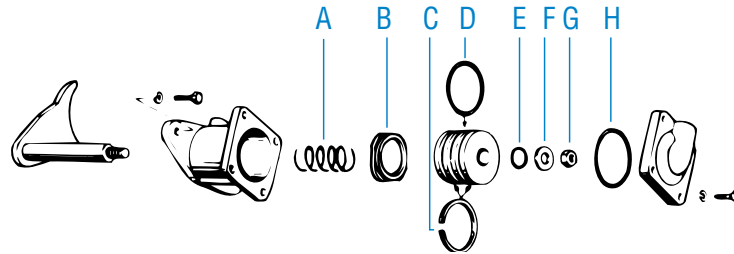
Air Operated Lockout Assembly

Non-Current Production

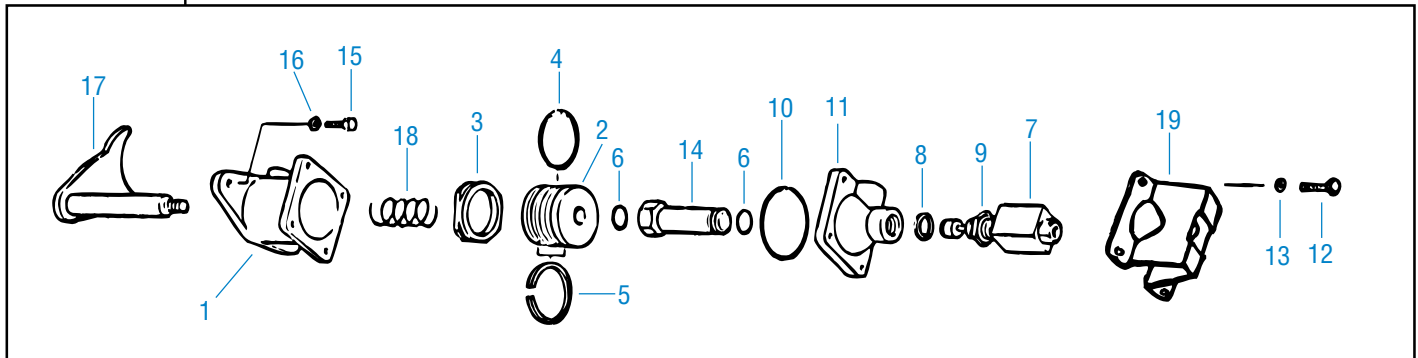
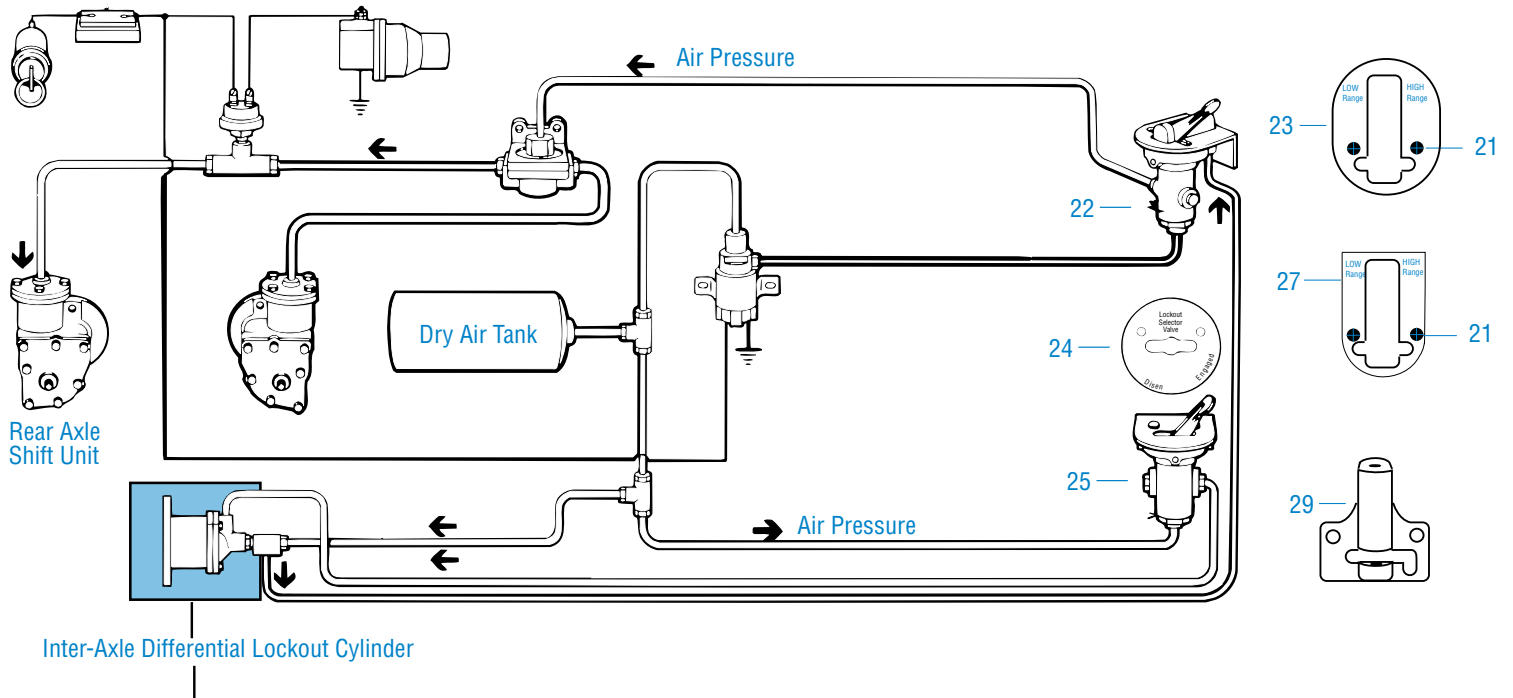
To service non-current production air-operated lockout assemblies (shown below), order service kit 211201. If additional parts are needed that are not identified below, order current production lockout assembly 123218.

| Item | Order Part No. |
|------|----------------|
|------|----------------|

| | |
|-----------------|--------|
| A | 31038 |
| B | 102616 |
| C | 96916 |
| D | 32832 |
| E | 32826 |
| F | 111406 |
| G | 90206 |
| H | 60817 |
| and RTV sealant | |



Axle Range Selection and Inter-Axle Differential Lockout System with Axle Range Interlock and Straight-air type Lockout



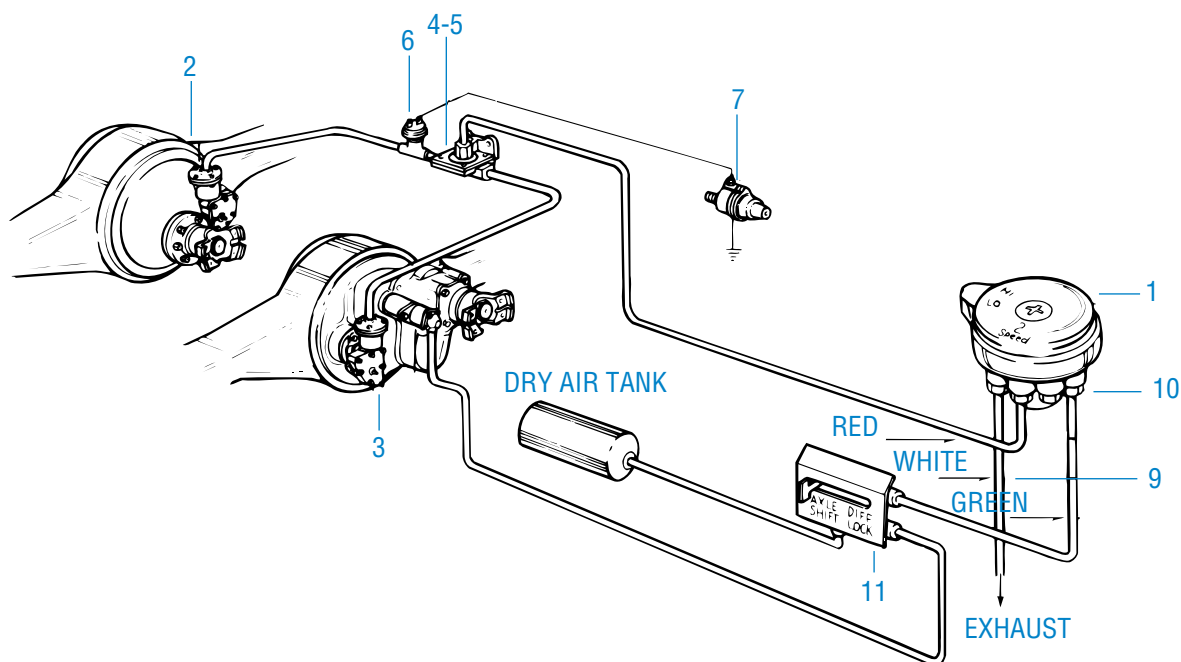
| Item | Description | Qty | Order Part No. | Notes |
|------|---------------------------|-----|----------------|-----------------|
| 1 | Shift Cylinder Body | 1 | 32828 | |
| 2 | Shift Cylinder Piston | 1 | 32834 | |
| 3 | Piston Stop | 1 | | |
| 4 | Piston O-ring | 1 | 32832 | |
| 5 | Piston Felt Oiler | 2 | 96916 | |
| 6 | Push-Rod O-ring | 2 | 32826 | |
| 7 | Valve Assy (includes 8-9) | 1 | 113534 | |
| 8 | Star Washer | 1 | | |
| 9 | Nut | | | |
| 10 | Cover O-ring | 1 | 60817 | |
| 11 | Body Cover | 1 | 113529 | |
| 12 | Cover Cap Screw | 4 | 79363 | |
| 13 | Lockwasher | 4 | 90419 | |
| 14 | Hex Nut Piston | 1 | 113530 | |
| 15 | Body Cap Screw | 2 | 90031 | |
| 16 | Lockwasher | 2 | 90415 | |
| 17 | Shift Fork Assy | 1 | 103529 | |
| 18 | Compression Spring | 1 | 31038 | |
| 19 | Valve Protector | 1 | 119878 | |
| 20 | Shift Diagram | 1 | 113545 | Not Illustrated |
| 21 | Screw | 2 | 113549 | |
| 22 | Shift Valve | 1 | 113661 | |
| 23 | Cover Plate | 1 | 126622 | In Dash |
| 24 | Lockout Selector Label | 1 | 111331 | |
| 25 | Air Shift Valve | 1 | 84678 | |
| 26 | Instruction Label | 1 | 109377 | Not Illustrated |
| 27 | Mounting Plate | 1 | 126621 | Under Dash |
| 28 | Wrench | 1 | 126407 | Not Illustrated |
| 29 | Piston Hsg Assy | 1 | 113543 | |

Kits and Assemblies

| | | |
|---|--------|---|
| Air Control Front Lockout Parts Kit | 118409 | Included Items 1-11, 18 |
| Power Divider Air Lockout Parts Kit | 113650 | Includes 1-19 |
| Dual Range Tandem Protective Shift System Kit | 121236 | In Dash |
| | | Includes Items 6-10,14,17,19-23,26,28 |
| Dual Range Tandem Protective Shift System Kit | 121237 | Under Dash |
| | | Includes Items 6-11,14,19-22,26-28 |
| Shift Valve Assy | 113544 | Under Dash - Includes Items 21,22,27,29 |
| Shift Valve Assy | 113662 | In Dash - Includes Items 21-23,29 |

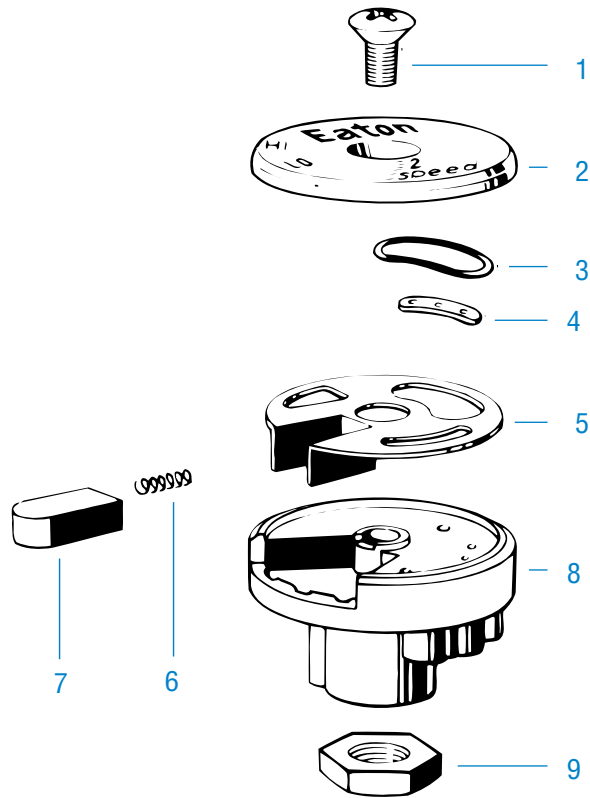
Note: This illustration is intended to help identify service parts used in the Protective Shift System for all Dual Range Spicer Tandem Axles. For System operation information, refer to Spicer Service Manual EA-44 or Service Parts Bulletin 85-03.

Axle Shift System



| Item | Description | Qty | Order Part No. | Notes |
|------|-------------------------------------|-----|----------------|------------------------------------|
| 1 | Shifter Valve | | | See Air Shifter Valve |
| 2 | Rear Axle Shift Unit | 1 | 73507 | See Piston Air Shift System |
| 3 | Forward Axle Shift Unit | 1 | 73503 | See Piston Air Shift System |
| 4 | Quick Release Valve | 2 | 66468 | |
| 5 | Elbow Tube Connector | 2 | 66476 | (In Quick Release Valve) |
| 6 | Speedometer Adapter Pressure Switch | 1 | 56071 | (Normally Closed Type) |
| 7 | Speedometer Adapter | 1 | | (Refer to OEM Catalog) |
| 8 | Lockout Valve (toggle-type) | 1 | 74265 | (In cab) |
| | Lockout Instruction Tag | 1 | 104608 | (In cab) |
| 9 | Tubing & Related Parts | AR | | |
| | Green | | 66472 | (Supply) |
| | Red | | 66473 | (To Quick Release Valve) |
| | White | | 66475 | (Exhaust) |
| | Loom | | 66479 | |
| | Loom Clip | | 66478 | |
| 10 | Connector | 4 | 66471 | $\frac{1}{4}$ " x $\frac{1}{16}$ " |

Air Shifter Valve

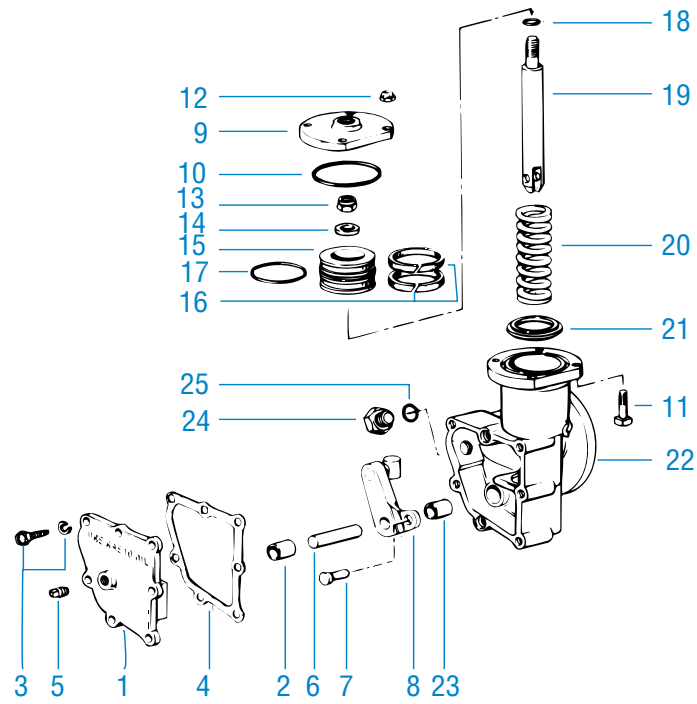


| Item | Description | Qty | Order Part No. | Notes |
|------|---------------------------|-----|----------------|---------------------------------------|
| 1 | Cover Screw | 1 | 66459 | |
| 2 | Cover | 1 | 70740 | |
| 3 | "O" Ring | 1 | 66455 | |
| 4 | "O" Ring Guide | 1 | 66454 | |
| 5 | Shifter Plate | 1 | 74860 | |
| 6 | Spring | 1 | 74861 | |
| 7 | Shifter Knob (Valve Lock) | 1 | 74863 | |
| 8 | Housing | 1 | | Must order complete shift valve assy. |
| 9 | Jam Nut | 1 | 56286 | ($\frac{5}{8}$ "-11) |
| | (Varies with lever size) | | 59600 | ($\frac{1}{2}$ "-20) |
| | | | NLA | ($\frac{1}{2}$ "-13) |
| | | | 56526 | ($\frac{3}{8}$ "-24) |

Kits And Assemblies

| | | |
|--------------------------|-------|--------------------------------|
| Air Valve Repair Kit | 78439 | Includes Items 3-7 |
| Air Shifter Valve Assy. | 74876 | Lever Size: $\frac{5}{8}$ "-11 |
| (Varies with Lever Size) | 74877 | Lever Size: $\frac{1}{2}$ "-20 |
| | 74878 | Lever Size: $\frac{1}{2}$ "-13 |
| | 74879 | Lever Size: $\frac{3}{8}$ "-24 |

Piston Air Shift System



Piston Air Shift System

| Item | Description | Qty | Order Part No. | Notes |
|------|---------------------------------------|-----|----------------|----------------------------|
| 1 | Cover Assy. (includes Item 2) | 1 | 73486 | (DT only) Cover# 73484-NSS |
| | | 1 | 73487 | (RT only) Cover# 73485-NSS |
| 2 | Cover Bearing | 1 | 73481 | |
| 3 | Self-Tapping Screw & Washer Assy. | 7 | 88053 | |
| 4 | Cover Gasket | 1 | 73488 | |
| 5 | Cover Plug | 1 | 28325 | |
| 6 | Actuating Lever Pin | 1 | 73456 | |
| 7 | Clevis Pin | 1 | 73498 | |
| 8 | Actuating Lever, Pin & Block Assy. | 1 | 84803 | (DT only) |
| | | 1 | 84804 | (RT only) |
| 9 | Shift Housing Cover | 1 | 73490 | |
| 10 | Seal Ring | 1 | 73492 | |
| 11 | Cover Bolt | 4 | 73491 | |
| 12 | Lock Nut | 4 | 47641 | |
| 13 | Lock Nut | 1 | 73496 | |
| 14 | Washer | 1 | 111406 | |
| 15 | Piston | 1 | 73493 | |
| 16 | Felt Piston Oiler (strip) | 2 | 96916 | |
| 17 | Piston "O" Ring | 1 | 32832 | |
| 18 | Grommet | 1 | 32826 | |
| 19 | Push Rod | 1 | 73497 | |
| 20 | Compression Spring | 1 | 73494 | |
| 21 | Piston Stop | 1 | 73495 | |
| 22 | Housing Assy. (Includes Items 3 & 23) | 1 | 82428 | (DT only) Hsg# 84797-NSS |
| | | 1 | 82429 | (RT only) Hsg# 84798-NSS |
| 23 | Housing Bearing | 1 | 73481 | |
| 24 | Cap Screw | 1 | 58309 | (DT only) |
| 25 | "O" Ring | 1 | 56659 | (DT only) |

Kits And Assemblies

Piston Air Shift Unit Assy.*

73503

(DT only)

Piston Air Shift Unit Assy.*

73507

(RT only)

(*Both Assy - Electric Over Air or Straight

Air)

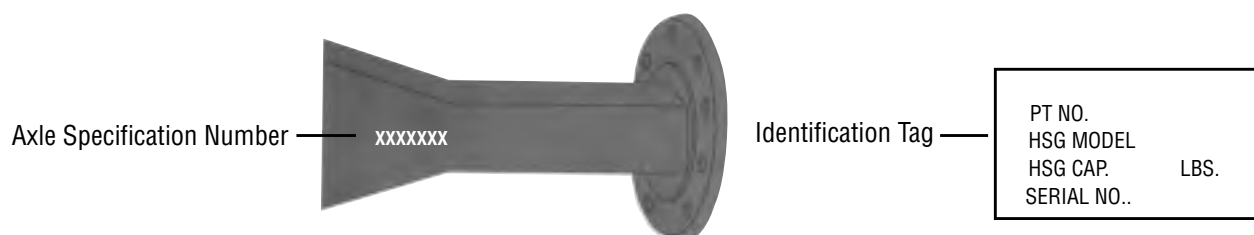
(*Both Assy - Include Items 1-23)

Note: NSS-Not Serviced Separately

461, 521, 581, 601 Forward/Rear Housings

All drive axles are mounted in Spicer fabricated steel axle housings. These housings are developed to meet specific OEM requirements for dimensions, suspension mounting and brakes. Many of the most commonly-used housings are referenced in the accompanying parts list along with the OEMs currently specifying them. If the housing being replaced is not listed and replacement is necessary, provide the truck dealer with the following information:

- Information from metal tag.
- Year, make and model of the truck.
- Axle model and ground loading capacity.
- Axle specification number.
- Type of brakes used.

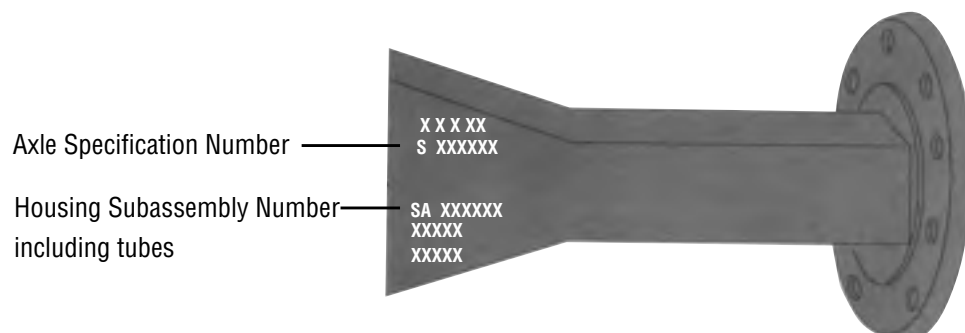


651 Housings

These tandem drive axles are mounted in Spicer cast steel axle housings and are fitted with a wide variety of suspension mounting bracketry on the basis of OEM specification. Should replacement of the housing become necessary, provide the truck dealer with the housing subassembly number (SA No. - see drawing for location).

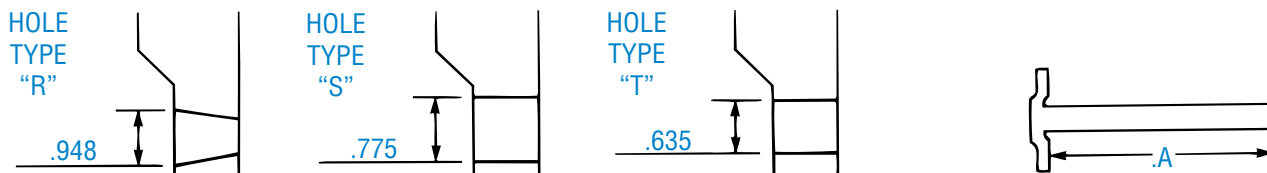
If this number is not available, provide the truck dealer with as much as the following information as possible:

- Axle specification number
- Year, make and model of the truck
- Axle, model and ground-loading capacity
- Type suspension (if known)



Axle Shaft Configurations

These axles will be found with a number of different axle shafts, on the basis of OEM specification. When ordering replacement axle shafts, note the part number stamped in to the flange.



Models D/R 521, 581, 601

36 Involute Spline

2-1/4 Diameter

| Track | | "A" Length | Type "R" | Type "S" | Type "T" |
|--------------|-----|------------|----------|----------|----------|
| Narrow | 72" | 41 1/4" | 119903 | — | — |
| Intermediate | 74" | 42 1/4" | 126195 | 126599 | 126601 |
| Wide | 78" | 44 1/4" | 126196 | 126600 | 126602 |
| Wide Wide | 80" | 45 1/4" | 119904 | — | — |

Model D/R 651

36 Involute Spline

2-1/4 Diameter

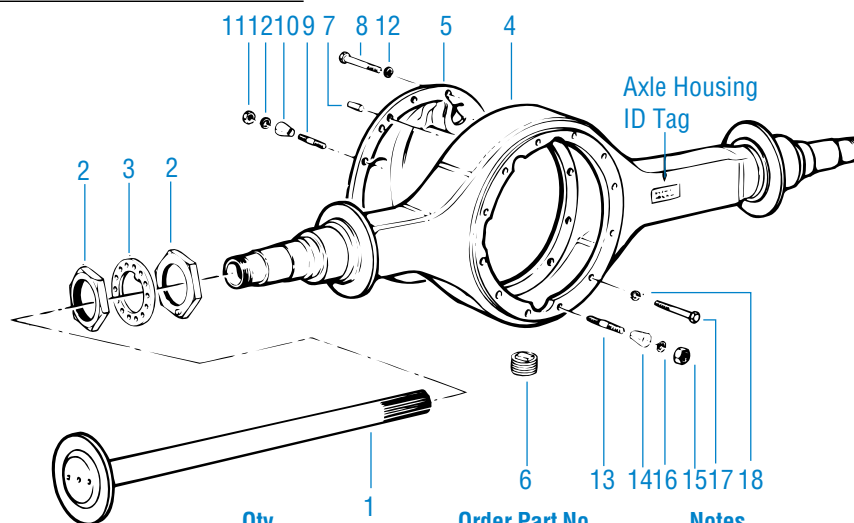
| Track | | "A" Length | Type "R" |
|--------------|-----|------------|----------|
| Narrow | 72" | 41 1/4" | 119903 |
| Intermediate | 75" | 42 3/4" | 119409 |
| Wide | 80" | 45 1/4" | 119904 |
| Wide Wide | 85" | 47 3/4" | 119905 |

Track Width

Track width can be determined by measuring the distance between the brake flanges.

| Track Width | Flange-to-Flange Measurement |
|-------------|------------------------------|
| 72" | 52.125" |
| 75" | 55.125" |
| 80" | 60.125" |
| 85" | 65.125" |

D521 / D581 / D601 / T521 / T601 / S521 / S601

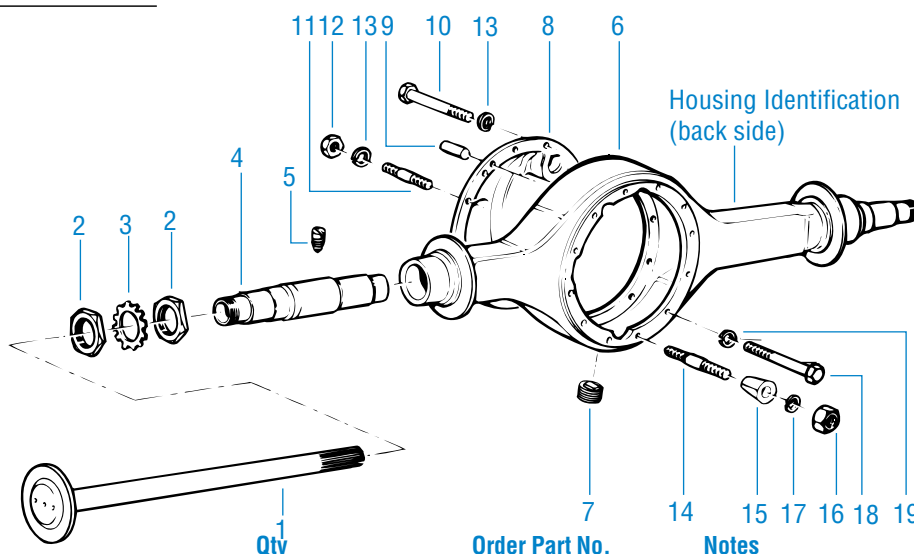


| Item | Description | Qty | Order Part No. | Notes |
|------|---|-----|--------------------------------------|---|
| 1 | Axle Shaft (36 Spline, 2-1/16" shaft dia.) 461 Series only For 521, 581, 601 & 651 Series see page 39 | 2 | 126958 110889 110890 113335 | (42" long, .948 taper holes) (40 7/8" long, .638" thru holes) (41 1/16" long, .948" taper holes) (40 3/32" long, .762" thru holes) |
| 2 | Hub Bearing Adjuster Nut | 2 | 119881 | (see Note 1) |
| | (Forward and Rear Axles) | 2 | 119882 | (varies by OEM) |
| 3 | Bearing Adjuster Lockwasher | 2 | 119883 | |
| 4 | Axle Housing Assy | 1 | | See OEM Catalog |
| 5 | Axle Housing Cover | | | See corresponding model parts list in this catalog |
| 6 | Magnetic Drain Plug | 1 | 54254 | |
| | Magnetic Filler Plug | 1 | 75130 | |
| 7 | Cover Locating Dowel | 1 | 7641 | Forward Axle |
| 8 | Cover Cap Screw | 1 | 79558 | Forward Axle |
| 9 | Cover Stud | 11 | 49982 | Forward Axle |
| 10 | Taper Dowel | 4 | 83481 | |
| 11 | Nut | 11 | 42364 | |
| 12 | Lockwasher | 12 | 90415 | |
| 13 | Stud | 10 | 36435 | Forward Axle |
| 13 | Stud | 8 | 36435 | (Short) Rear Axle |
| | | 4 | 51212 | (Long) Rear Axle |
| 14 | Taper Dowel | 4 | 83482 | Forward Axle |
| 15 | Nut | 10 | 90208 | Forward Axle |
| 15 | Nut | 12 | 90208 | Rear Axle |
| 16 | Lockwasher | 10 | 90422 | Forward Axle |
| 16 | Lockwasher | 12 | 90422 | Rear Axle |
| 17 | Cap Screw | 2 | 99708 | (12 pt.) Forward Axle |
| 18 | Lockwasher | 2 | 11167 | Forward Axle |

| | | |
|-----------------|--------|------------------------------|
| Breather Valve | 809560 | Not Illustrated |
| Snap Cap | 126980 | Not Illustrated |
| Reducer Adapter | 809561 | 3/8" to 1/8" Not Illustrated |

Note 1: Not interchangeable with older design -78944 (3/8" thick), 95372 (9/16" thick), 11249 (7/16" thick) nuts, or 11245 bearing adjuster nut locks.

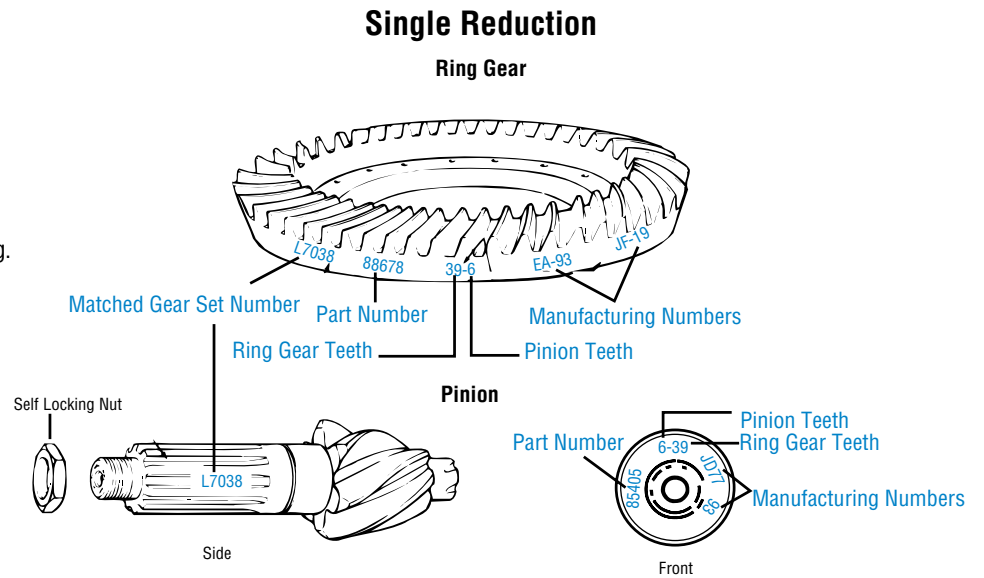
D651 / T651 / S651 Tandems



| Item | Description | Qty | Order Part No. | Notes |
|------|-----------------------------|-----|----------------|--|
| 1 | Axle Shaft | 2 | | See Axle Hsgs & Shafts: Axle Shaft Configurations |
| 2 | Hub Bearing Adjuster Nut | 4 | 11249 | |
| 3 | Bearing Adjuster Lockwasher | 2 | 11245 | |
| 4 | Axle Housing Spindle Tube | 2 | 82620 | |
| 5 | Spindle Tube Set Screw | 2 | NLA | |
| 6 | Axle Housing | 1 | | See OEM Catalog |
| 7 | Magnetic Drain Plug | 1 | 54254 | |
| 8 | Axle Housing Cover | 1 | | See corresponding model parts list in this catalog |
| 9 | Cover Locating Dowel | 2 | 7641 | |
| 10 | Cover Cap Screw | 1 | 85454 | |
| 11 | Cover Stud | 11 | 85453 | |
| 12 | Nut | 11 | 25348 | |
| 13 | Lockwasher | 12 | 90414 | |
| 14 | Stud | 10 | 36435 | Forward Axle |
| 14 | Stud | 8 | 36435 | (Short) Rear Axle |
| | | 4 | 51212 | (Long) Rear Axle |
| 15 | Taper Dowel | 4 | 83483 | Forward Axle |
| 16 | Nut | 10 | 90208 | Forward Axle |
| 16 | Nut | 12 | 90208 | Rear Axle |
| 17 | Lockwasher | 10 | 90422 | Forward Axle |
| 17 | Lockwasher | 12 | 90422 | Rear Axle |
| 18 | Cap Screw | 2 | 99708 | (12 pt.) Forward Axle |
| 19 | Lockwasher | 2 | 11167 | Forward Axle |
| | Breather Valve | | 809560 | Not Illustrated |
| | Snap Cap | | 126980 | Not Illustrated |
| | Reducer Adapter | | 809561 | $\frac{3}{8}$ " to $\frac{1}{8}$ " Not illustrated |

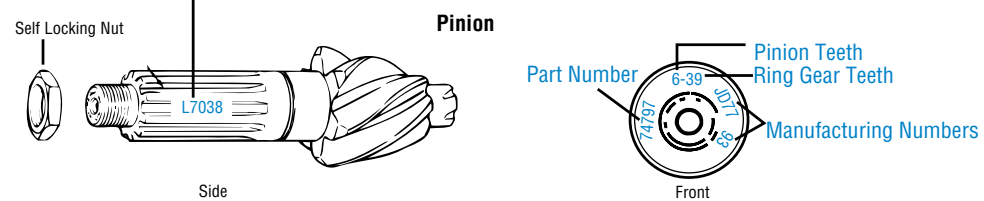
Ring Gear and Pinion Identification

- Ring Gear and Drive Pinion are matched parts and must be replaced in sets.
- Complete identification is stamped on both parts shown in the adjacent drawing.
- Order by Spicer "Set No." which includes drive pinion nut.



Double Reduction

Ring Gear



Pinion Bearing Spacers

Pinion Bearing Spacer size is equal to thickness in inches. The most commonly used spacers are indicated with an asterisk*.

| Size" | Part# | Size" | Part# | Size" | Part# | Size" | Part# |
|-------|-------|-------|--------|-------|--------|-------|--------|
| .167 | 91679 | .176 | 91688 | .185 | 91702* | .194 | 91719 |
| .168 | 91680 | .177 | 91689* | .186 | 91704* | .195 | 91720* |
| .169 | 91681 | .178 | 91690* | .187 | 91706* | .196 | 91721 |
| .170 | 91682 | .179 | 91691* | .188 | 91708* | .197 | 91722 |
| .171 | 91683 | .180 | 91692* | .189 | 91710* | .198 | 91723* |
| .172 | 91684 | .181 | 91694* | .190 | 91712 | .199 | 91724 |
| .173 | 91685 | .182 | 91696* | .191 | 91714 | .200 | 91725 |
| .174 | 91686 | .183 | 91698* | .192 | 91716 | .201 | 91726 |
| .175 | 91687 | .184 | 91700* | .193 | 91718* | .202 | 91727 |

Drive Pinion and Gear Set

Single Reduction - 18" Gearing

| Ratios | Forward Axle Models: DS461-P, DS521-P, DS581-P | | | | Rear Axle Models: RS461, RS521, RS581 | | |
|--------|--|------------|--------------------------------|--|---------------------------------------|------------|--------------------------------|
| | Gear Set | Gear (NSS) | Pinion (NSS) 41,2.100" Dia. | | Gear Set | Gear (NSS) | Pinion (NSS) 41,2.100" Dia. |
| 3.55 | 122667 | 126678(39) | 126679(11) | | 122668 | 111349(39) | 126677(11) |
| 3.70 | 122334 | 98160(37) | 126161(10) | | 121887 | 88500(37) | 126120(10) |
| 3.90 | 123333 | 99900(39) | 127047(10) | | 123334 | 99896(39) | 127048(10) |
| 4.11 | 122335 | 94381(37) | 126162(9) | | 121888 | 88502(37) | 126121(9) |
| 4.33 | 122336 | 78856(39) | 126163(9) | | 121889 | 52999(39) | 126118(9) |
| 4.56 | 122337 | 78858(41) | 126164(9) | | 121890 | 73312(41) | 126125(9) |
| 4.88 | 122338 | 78860(39) | 126165(8) | | 121891 | 53001(39) | 126119(8) |
| 5.29 | 211333 | 127339(37) | 127327(7) | | 211335 | 127338(37) | 127328(7) |
| 5.43 | 122339 | 78862(38) | 126166(7) | | 121892 | 53003(38) | 126122(7) |
| 6.17 | 122340 | 78864(37) | 126167(6) | | 121893 | 53005(37) | 126123(6) |
| 6.50 | 212890 | 128028(39) | 128029(6) | | 212891 | 128030(39) | 128031(6) |
| 6.67 | 213287 | 107888(40) | 128052(6) | | 213288 | 53007(40) | 128054(6) |

Dual Range and Planetary Double Reduction - 18" Gearing

| Ratios | Forward Axle Models: DT461-P, DP461-P, DT521-P, DP521-P, DT601-P DP601-P, DT651-P, DP651-P, TP/SP601, TP/SP651 | | | | Rear Axle Models: RT461, RP461, RT521, RP521, RT601, RP601, RT651, RP651 | | |
|-----------|--|------------|--------------------------------|--|---|------------|--------------------------------|
| | Gear Set | Gear (NSS) | Pinion (NSS) 41,2.100" Dia. | | Gear Set | Gear (NSS) | Pinion (NSS) 41,2.100" Dia. |
| 3.70/5.04 | 122387 | 126567(37) | 126161(10) | | 122394 | 126568(37) | 126120(10) |
| 3.90/5.32 | 124444 | 127183(39) | 127047(10) | | 124445 | 127184(39) | 127048(10) |
| 4.11/5.60 | 122388 | 126569(37) | 126162(9) | | 122395 | 126570(37) | 126121(9) |
| 4.33/5.90 | 122389 | 126571(39) | 126163(9) | | 122396 | 126572(39) | 126118(9) |
| 4.56/6.20 | 122390 | 126573(41) | 126164(9) | | 122397 | 126574(41) | 126125(9) |
| 4.88/6.64 | 122391 | 126575(39) | 126165(8) | | 122398 | 126576(39) | 126119(8) |
| 5.43/7.39 | 122392 | 126577(38) | 126166(7) | | 122399 | 126578(38) | 126122(7) |
| 6.17/8.40 | 122393 | 126579(37) | 126167(6) | | 122400 | 126589(37) | 126123(6) |

Differential Carrier Assemblies

These assemblies are complete, less input yoke and dual range shift units.

Single Reduction Models

DS/RS461-P / 521-P / 581-P

Dual Range Models

DT/RT461-P / 521-P / 501-P / 651-P

| Gear Ratio | Forward Assy 36 Involute Splines | Rear Assy |
|------------|-------------------------------------|-----------|
| 3.55 | 952103 | 952104 |
| 3.70 | 674514 | 674520 |
| 3.90 | 674611 | 674612 |
| 4.11 | 674515 | 674521 |
| 4.33 | 674516 | 674522 |
| 4.56 | 674517 | 674523 |
| 4.88 | 674518 | 674524 |
| 5.29 | 674613 | 674614 |
| 5.43 | 674519 | 674525 |
| 6.17 | 674707 | 674709 |
| 6.50 | 674708 | 674710 |
| 6.67 | 213370 | 213371 |

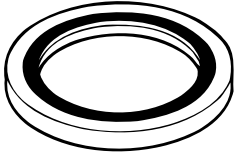
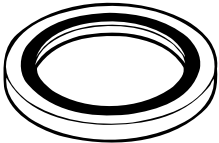
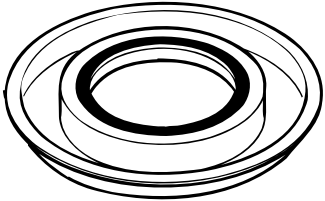
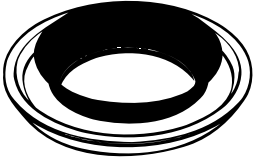
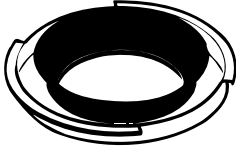
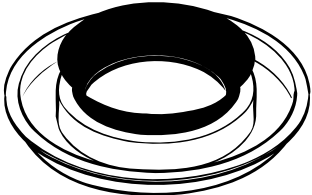
| Gear Ratio | Forward Assy 36 Involute Splines | Rear Assy 36 Involute Splines |
|------------|-------------------------------------|----------------------------------|
| 3.70/5.04 | 674609 | 674610 |
| 3.90/5.31 | 674828 | 674829 |
| 4.11/5.60 | 674526 | 674531 |
| 4.33/5.90 | 674527 | 674532 |
| 4.56/6.20 | 674528 | 674533 |
| 4.88/6.64 | 674529 | 674534 |
| 5.43/7.39 | 674530 | 674535 |
| 6.17/8.40 | 674912 | 674908 |

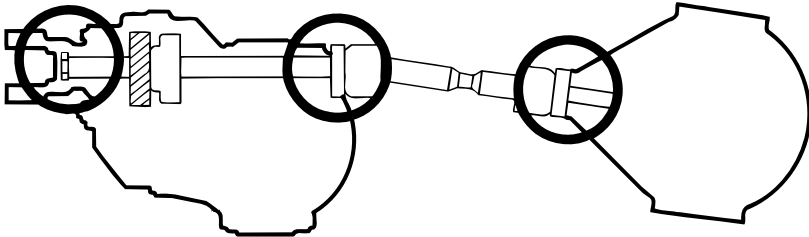
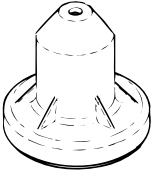


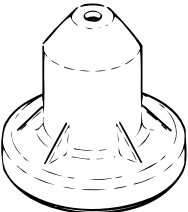
Differential Carrier Assemblies

These assemblies are complete, less input yoke and dual range shift units.

Planetary Double Reduction Models DP/RP461-P / 521-P / 601-P / 651-P

| Gear Ratio | Forward Assy 36 Involute Splines | Rear Assy 36 Involute Splines |
|------------|-------------------------------------|----------------------------------|
| 5.04 | 952082 | 952089 |
| 5.31 | 952140 | 952141 |
| 5.60 | 952083 | 952090 |
| 5.90 | 952084 | 952091 |
| 6.20 | 952085 | 952092 |
| 6.64 | 952086 | 952093 |
| 7.39 | 952087 | 952094 |
| 8.40 | 952088 | 952095 |

| | D-Input | D-Output | R-Pinion |
|----------------------|---|---|---|
| Old Seal Part Number |  119430 |  119429 |  113866 |
| New Seal Part Number |  210736 |  210737 |  210724 |

| | D-Input | D-Output | R-Pinion |
|------------------|---|---|---|
| Location |  | | |
| Tool Number Used | 210749  +  210750 | 210751  | 210749  |

New Oil Seals for Input and Output Yoke Assemblies

Starting in the 1st quarter of 1994, Spicer will begin servicing all 461,521,581,601,651 Axle Models with new Microlip Oil Seals. This product improvement will supersede existing Yoke/Slinger Assemblies. Using Oil Seal Driver Kits is recommended. The charts below show part supersession from "OLD" to "NEW" Yoke/Slinger Assy's and include other information concerning the inter-changeability of the "OLD" and "NEW" parts.

Basic Overhaul kits, Bearing kits with Oil Seals and other kits that have the old seals in them will be updated to include the new seals – these are still compatible with the "OLD" Yoke/Slinger assemblies.

New Yoke/Slinger Assemblies on Forward Axles must use the Microlip seals at the D-Output and D-Input, as result, the "NEW" Yoke/Slinger kits for Forward Axles will include the Microlip seal.

The Rear Axle pinion Yoke/Slinger assemblies will not contain Microlip seals – for Rear Axles you may use the "NEW" Yoke/Slinger assemblies with either the old Triple Lip seal or the new Microlip seals.

If you have any questions call your Dana representative.

Yoke and Slinger Assemblies

R-Pinion (Rear Axle)

"NEW" Assemblies do not include Microlip Seal

| Yoke Series | "OLD" Assy No# | "NEW" Assy No# |
|-------------|----------------|----------------|
| 72N | 126319 | 128888 |
| 1610 | 126547 | 128889 |
| 1610 | 126539 | 128882 |
| 1610 | 126587 | 128883 |
| 1710 | 126549 | 128890 |
| 1710 | 126541 | 128884 |
| 1710 | 126589 | 128885 |
| 1760 | 126551 | 128891 |
| 1760 | 126543 | 128886 |
| 1810 | 126545 | 128887 |
| 1810 | 126553 | 128892 |

- "OLD" Oil Seal # 113866
- "NEW" Oil Seal # 210724
- The 113866 Oil Seal may be used with the "NEW" Yoke/Slinger Assemblies.
- The 210724 Oil Seal may be used with "OLD" Yoke/Slinger Assemblies.
- Use Seal Driver #210749 for installation of the 210724 oilseal.

D-Output (Forward Axle)

"NEW" Assemblies include Microlip Seal

| Yoke Series | "OLD" Assy No# | "NEW" Assy No# |
|-------------|----------------|----------------|
| 72N | 126317 | 216478 |
| 1610 | 126650 | 216479 |
| 1710 | 126651 | 216480 |
| 1760 | 126652 | 216481 |
| 1810 | 126653 | 216482 |

- "OLD" Oilseal # 119429
- "NEW" Microlip Oil Seal # 210737
- The 119429 Oil Seal cannot be used with the "NEW" style Yoke/Slinger Assy.
- The 210737 Oil Seal may be used with "OLD" Yoke/Slinger Assemblies
- Use Seal Driver #210751 for installation of the 210737 oilseal.

D-Input (Forward Axle)

"NEW" Assemblies include Microlip Seal

| Yoke Series | "OLD" Assy No# | "NEW" Assy No# |
|-------------|----------------|----------------|
| 82N | 126318 | 216477 |
| 1710 | 126581 | 216471 |
| 1710 | 126686 | 216472 |
| 1760 | 126583 | 216473 |
| 1760 | 126688 | 216474 |
| 1810 | 126690 | 216475 |
| 1810 | 126585 | 216476 |

- "OLD" Oil Seal # 119430
- NEW" Oil Seal # 210736
- The 119430 Oil Seal cannot be used with the "NEW" style Yoke/Slinger Assemblies.
- The 210736 Oil Seal may be used with "OLD" Yoke/Slinger Assemblies.
- Use Seal Driver #210749 with Driver Insert 210750 for installation of the 210736 Oil Seal.

Input and Output Yokes

See information for New Oil Seals for Input and Output Yoke Assemblies before ordering

Forward Axles

Input (Yoke & Slinger) (46 involute splines)

| Yoke Series | Joint Angle | Style | Part No. |
|-------------|-------------|-------|----------|
| 82N | — | X | 126318 |
| 1710 | 30.0° | Y | 126581 |
| 1710 | 22.5° | Z | 126686 |
| 1760 | 30.0° | Y | 126583 |
| 1760 | 30.0° | Z | 126688 |
| 1810 | 30.0° | Z | 126690 |
| 1810 | 30.0° | Y | 126585 |

Rear Axles

Pinion (Yoke & Slinger) (41 involute splines)

| Yoke Series | Joint Angle | Style | Part No. |
|-------------|-------------|-------|----------|
| 72N | — | X | 126319 |
| 1550 | 18.0° | Z | 126537 |
| 1610 | 24.0° | Z | 126547 |
| 1610 | 26.0° | Y | 126539 |
| 1610 | 45.0° | Y | 126587 |
| 1710 | 29.0° | Z | 126549 |
| 1710 | 30.0° | Y | 126541 |
| 1710 | 39.0° | Z | 127702 |
| 1710 | 42.5° | Y | 126589 |
| 1760 | 29.0° | Y | 126543 |
| 1760 | 30.0° | Z | 126551 |
| 1810 | 30.0° | Y | 126545 |
| 1810 | 30.0° | Z | 126553 |

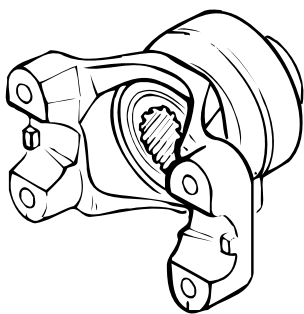
Yoke Styles:

- X — Thru Holes / Half Round (U-Bolt)
- Y — Full Round
- Z — Tapped Holes / Half Round (Brg. Strap)

Output (Yoke & Slinger) (41 involute splines)

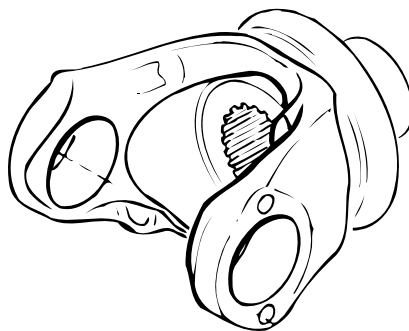
| Yoke Series | Joint Angle | Style | Part No. |
|-------------|-------------|-------|----------|
| 72N | — | X | 126317 |
| 1610 | 45.0° | Y | 126650 |
| 1710 | 38.0° | Y | 126651 |
| 1760 | 38.0° | Y | 126652 |
| 1810 | 30.0° | Y | 126653 |

STYLE X



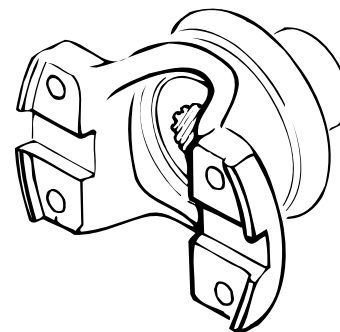
Thru Holes / Half Round
(U-Bolt)

STYLE Y



Full Round

STYLE Z



Tapped Holes/ Half Round
(Bearing Strap)

UPGRADES THAT WON'T LET YOU DOWN.™

I need my vehicle to be as reliable as I am.

For the Lifespan of Your Vehicle, Trust Dana Aftermarket.™

At Dana, we know that your customer's vehicles are more than just a means of transport; they help support what's most important to them. So to keep your business successful, you need to carry the parts that help clients avoid unnecessary downtime. That's why Dana engineers our OE-quality driveline components and sealing solutions for high-mileage vehicles with dependable performance and quality. For more information, visit SpicerParts.com/CV-Upgrade.



Aftermarket

SpicerParts.com or for our e-catalog, DanaAftermarket.com
#DanaAftermarket

Product Information: **SpicerParts.com** | E-Catalog and parts locator: **DanaAftermarket.com**

Dana Aftermarket Group

PO Box 1000 Maumee, Ohio 43537

Warehouse Distributors: 1.800.621.8084

OE Dealers: 1.877.777.5360

Follow SpicerParts [f](#) [t](#) [@](#) [v](#) [in](#)

© 2021 Dana Limited. All rights reserved. AXIP-0085-42021

SPICER[®]

