

Illustration 1
Patuxent River Airfield Diagram

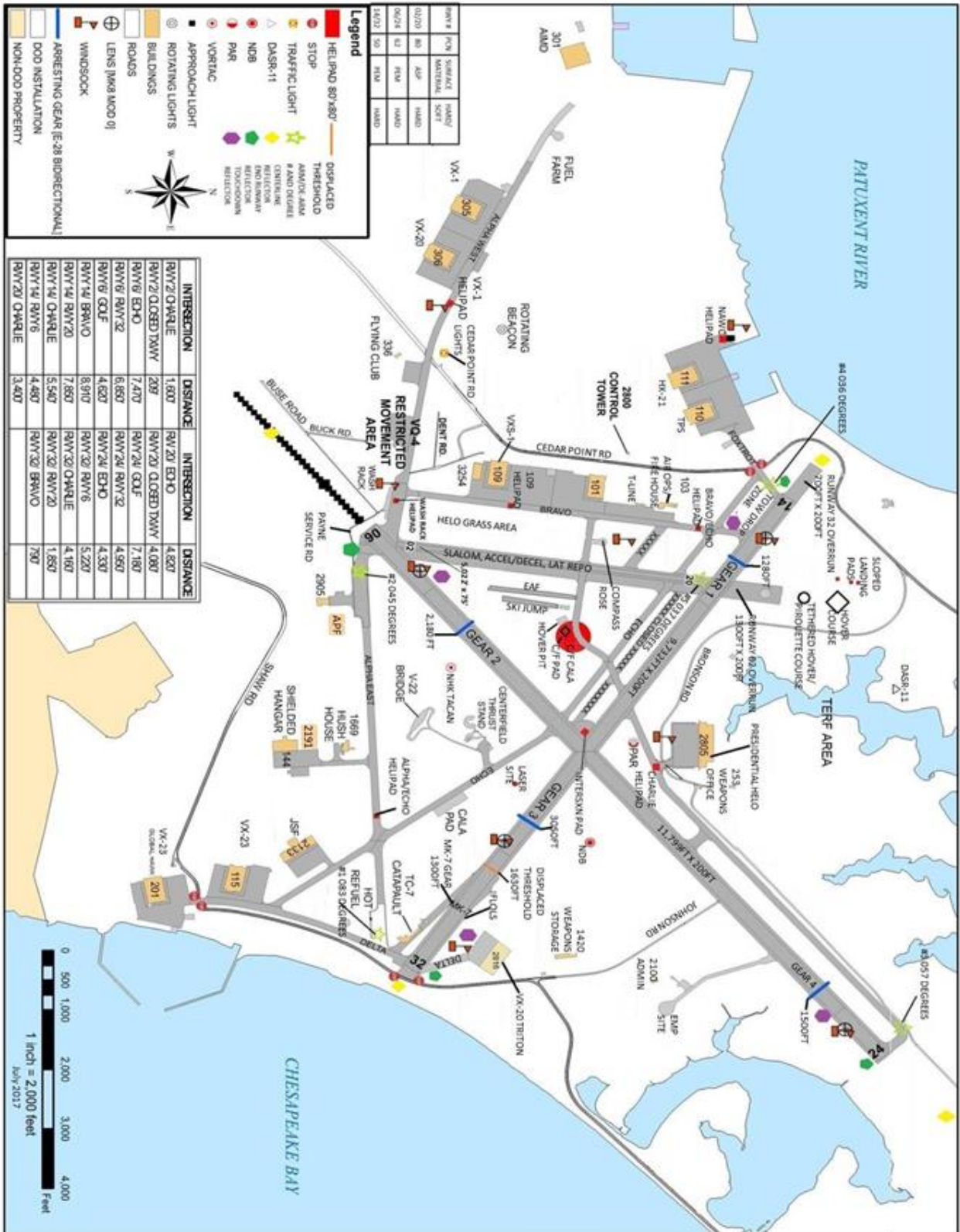
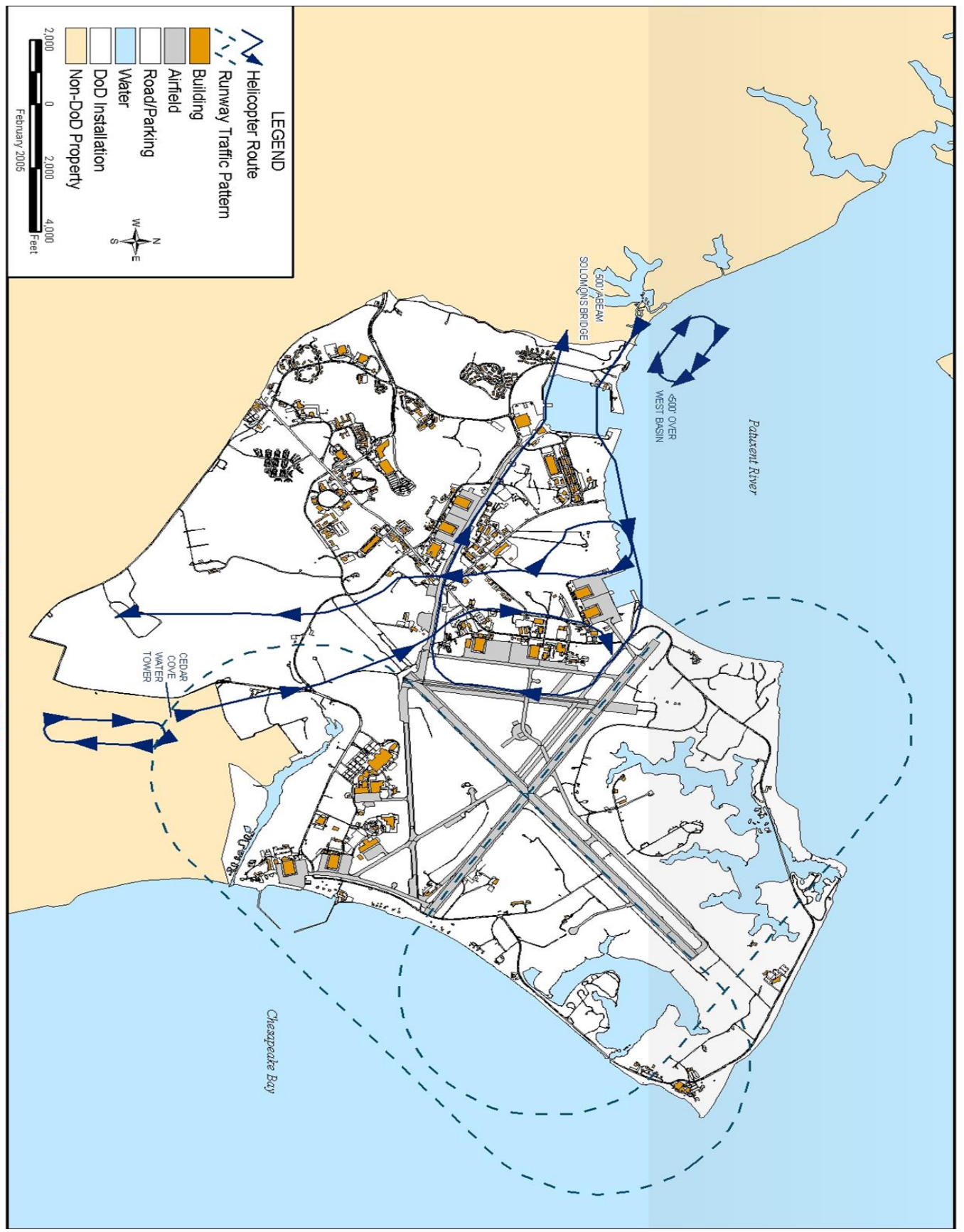


Illustration 2
Patuxent Airport Movement Area Weight Limitations

AREA	AIRCRAFT GROSS WEIGHT (LBS)			
	SINGLE WHEEL GEAR		DUAL GEAR	DUAL TANDEM
	150 psi	400 psi		
Runway 6/24	126,000	105,000	188,000	340,000
Runway 14/32	147,000	121,000	222,000	389,000
Runway 2/20	102,000	84,000	159,000	316,000
Taxiway Alpha West	147,000	113,000	226,000	339,000
Taxiway Alpha East	105,000	82,000	198,000	332,000
Taxiway Bravo	100,000	78,000	170,000	351,000
Taxiway Charlie	104,000	88,000	170,000	351,000
Taxiway Delta	78,000	65,000	122,000	255,000
Taxiway Echo	104,000	88,000	170,000	351,000
Taxiway Golf	147,00	147,000	225,000	370,000
Taxiway Papa	60,000	47,000	96,000	251,000
Flying Club Apron	68,000	52,000	110,000	267,000
Hanger 101 Apron	68,000	52,000	110,000	267,000
Hanger 109 Apron	70,000	55,000	120,000	271,000
Hanger 110 Apron	70,000	55,000	120,000	271,000
Hanger 115 Apron	90,000	76,000	140,000	286,000
Hanger 144 Apron	147,000	147,000	225,000	445,000
Hanger 201 Apron	105,000	80,000	160,000	309,000
Hanger 301 Apron	84,000	65,000	138,000	290,000
Hanger 305 Apron	74,000	60,000	126,000	287,000
Hanger 306 Apron	74,000	60,000	126,000	287,000

Illustration 3
South Helicopter Pattern



NOT FOR NAVIGATIONAL PURPOSES

Illustration 4
North Helicopter Pattern

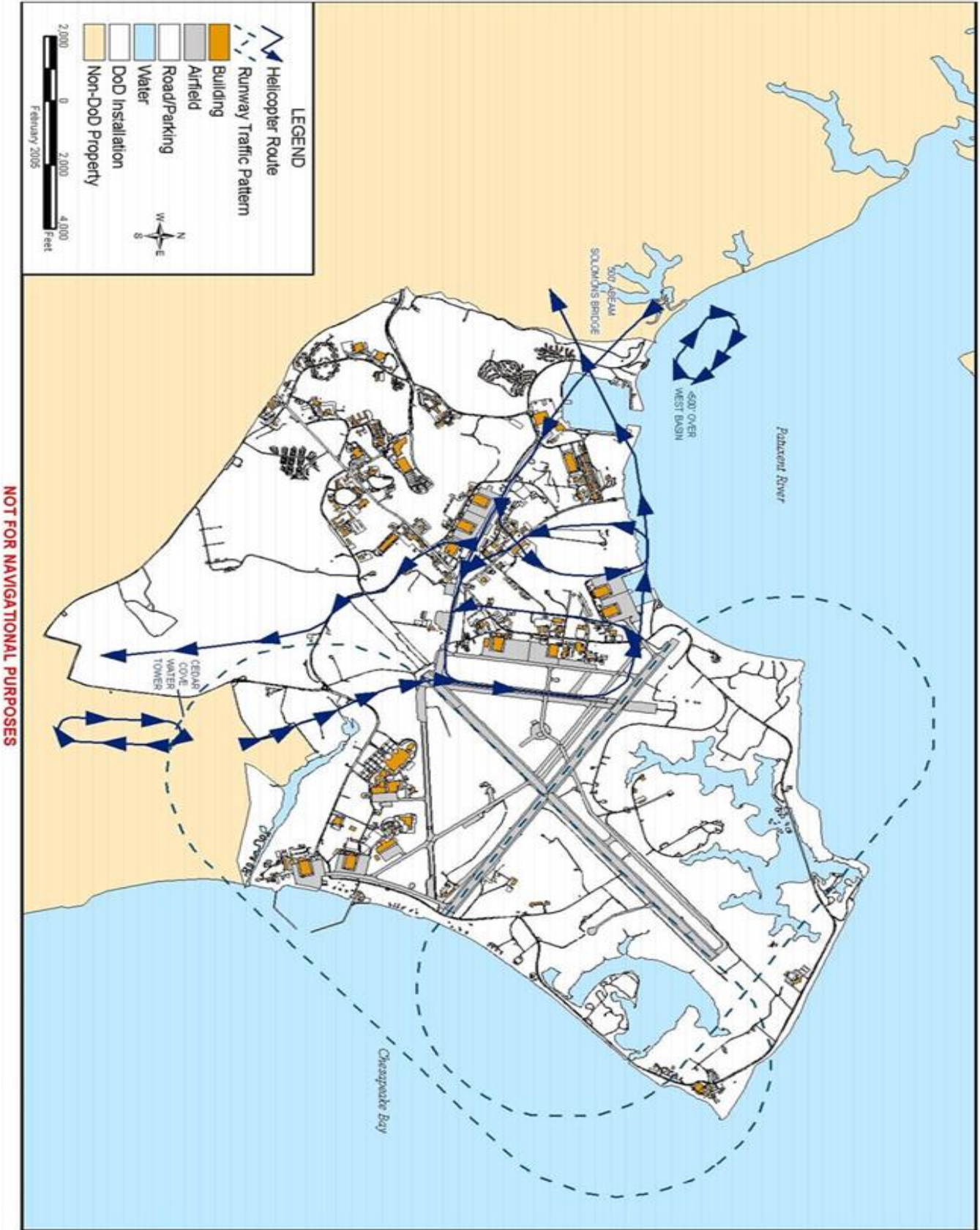


Illustration 5
Slope / Terrain Following (TERF) Area

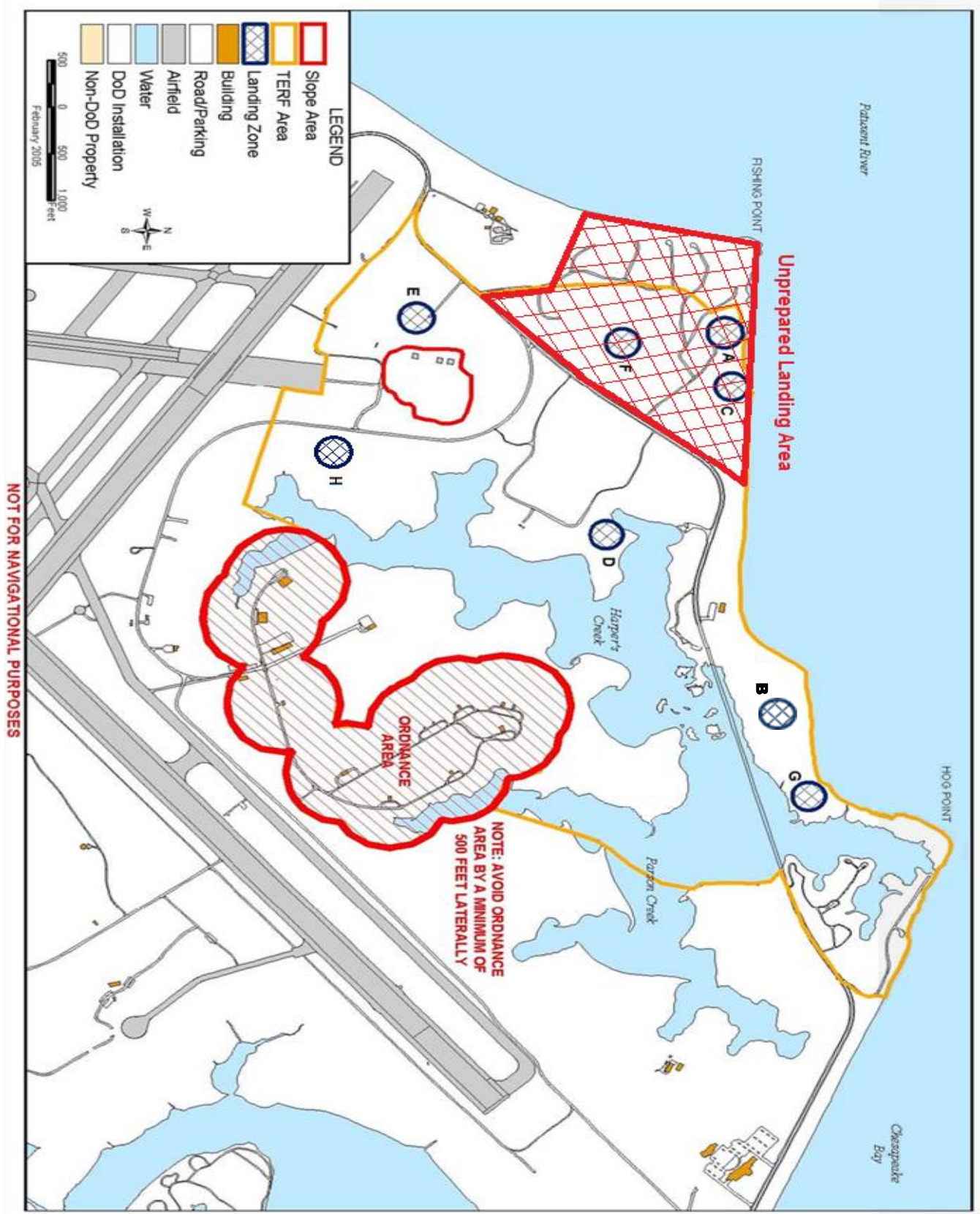


Illustration 6
Special VFR Local Helicopter Routes

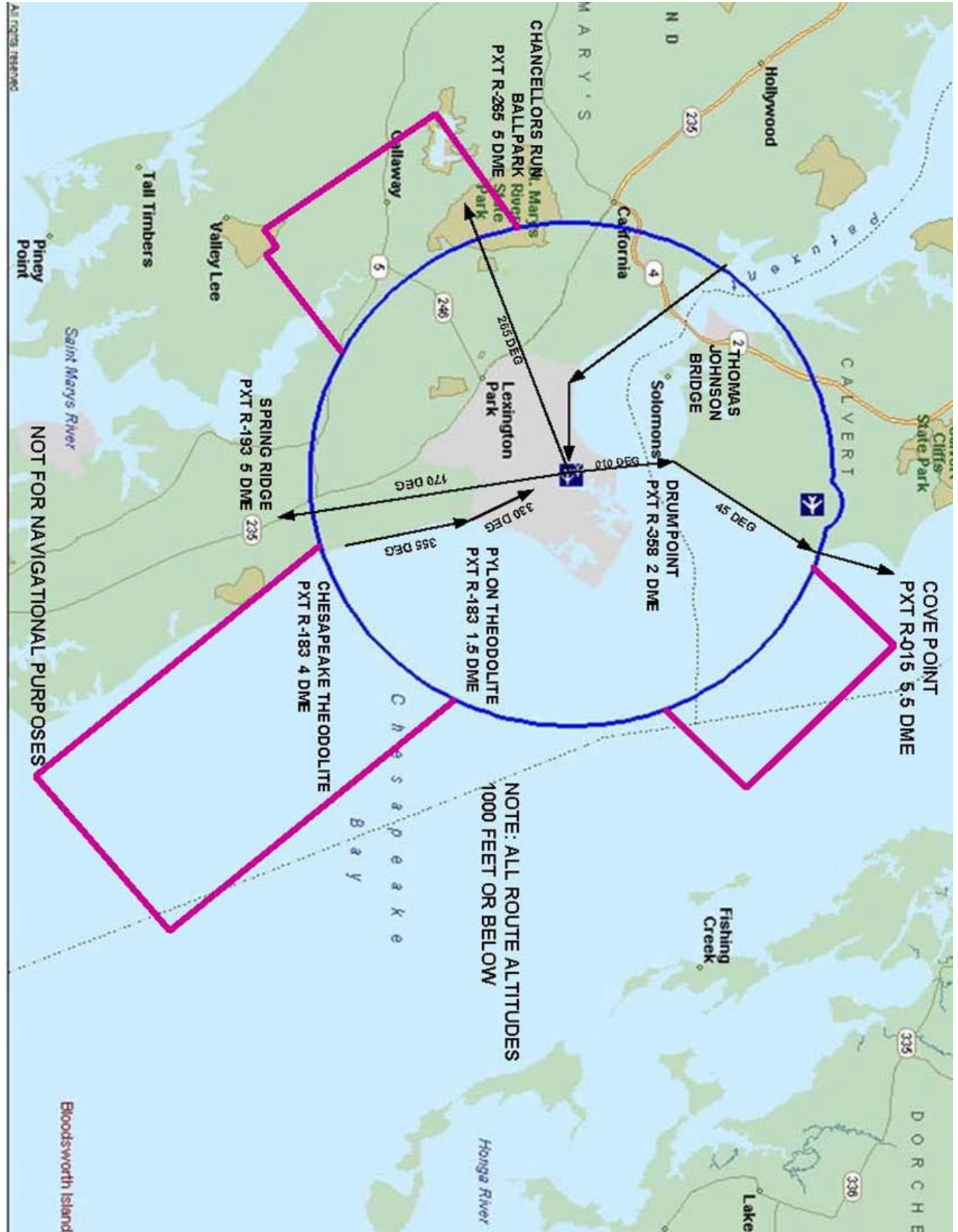


Illustration 7
Patuxent Approach Control Area

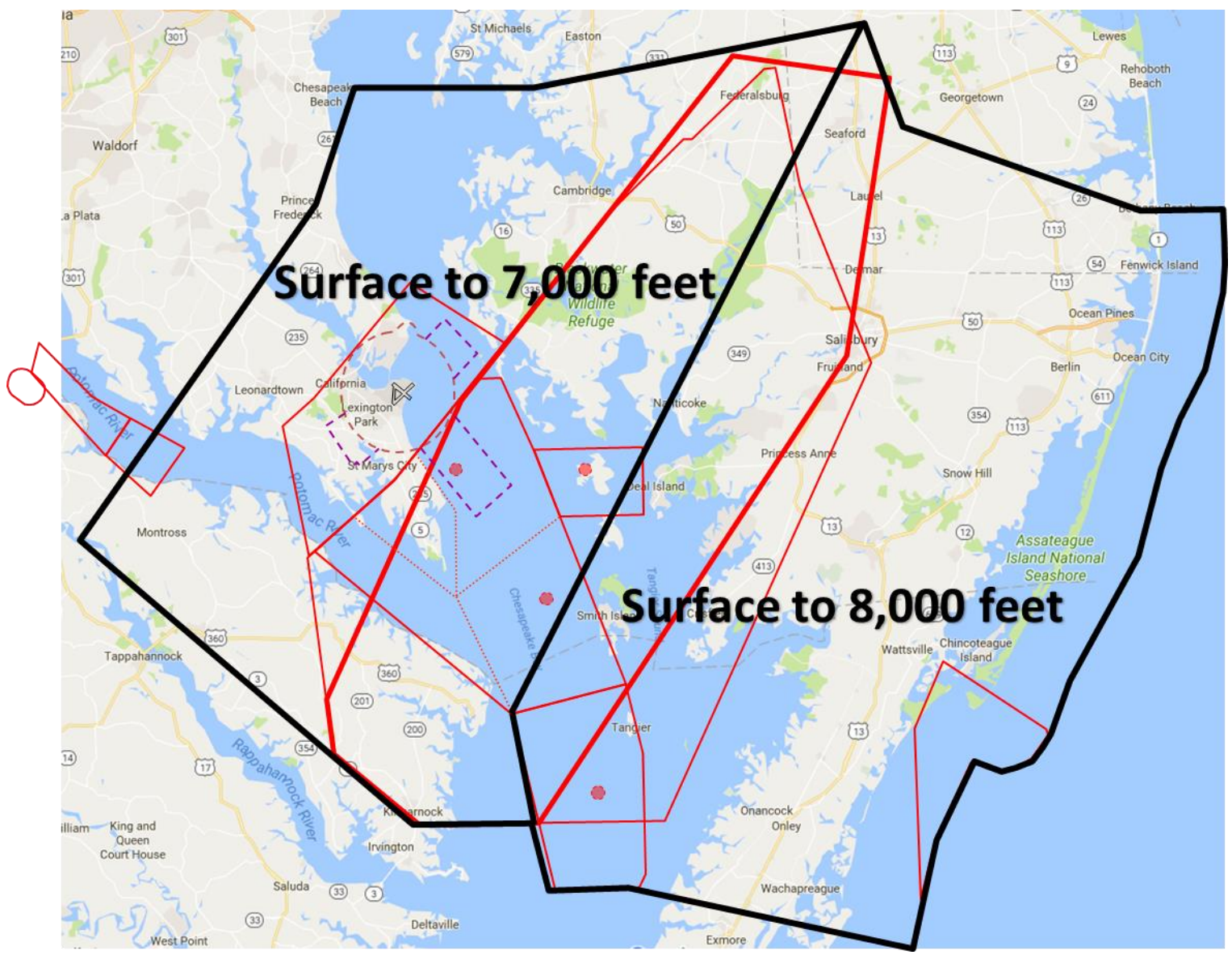


Illustration 8
Patuxent Restricted Areas

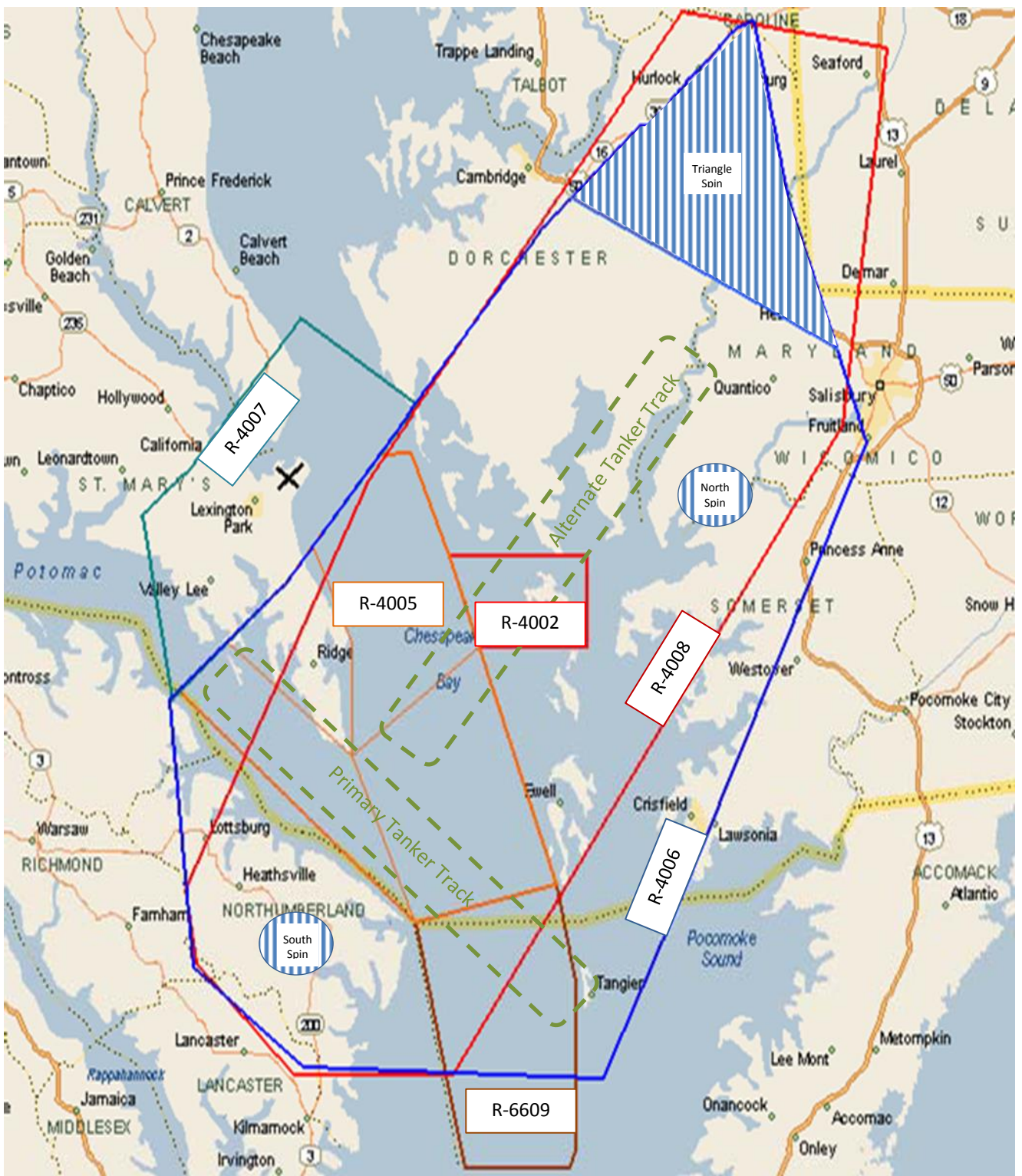


Illustration 9
Firing Range / Targets

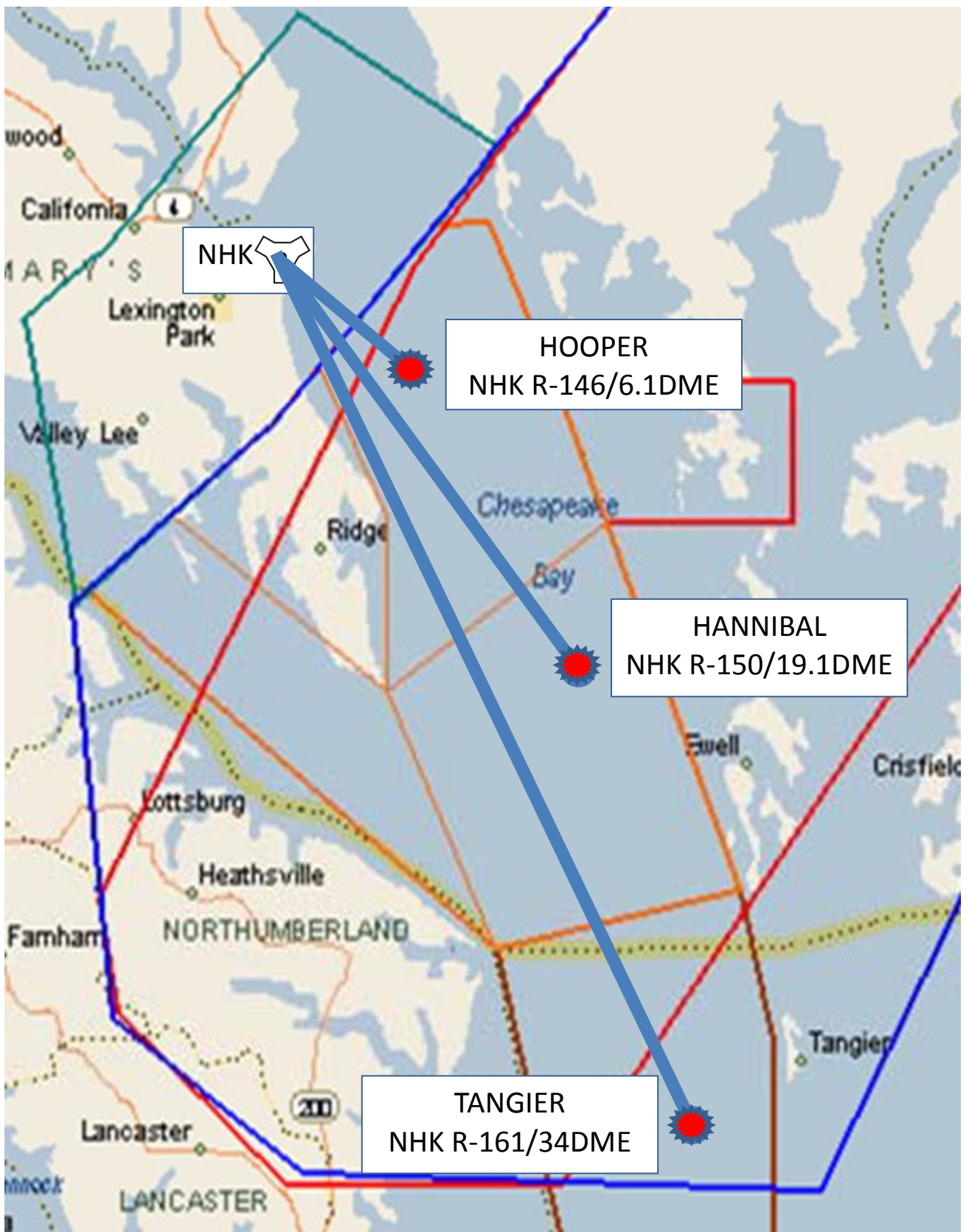


Illustration 10
ATC Assigned Airspace (ATCAA) Chessie A/B/C

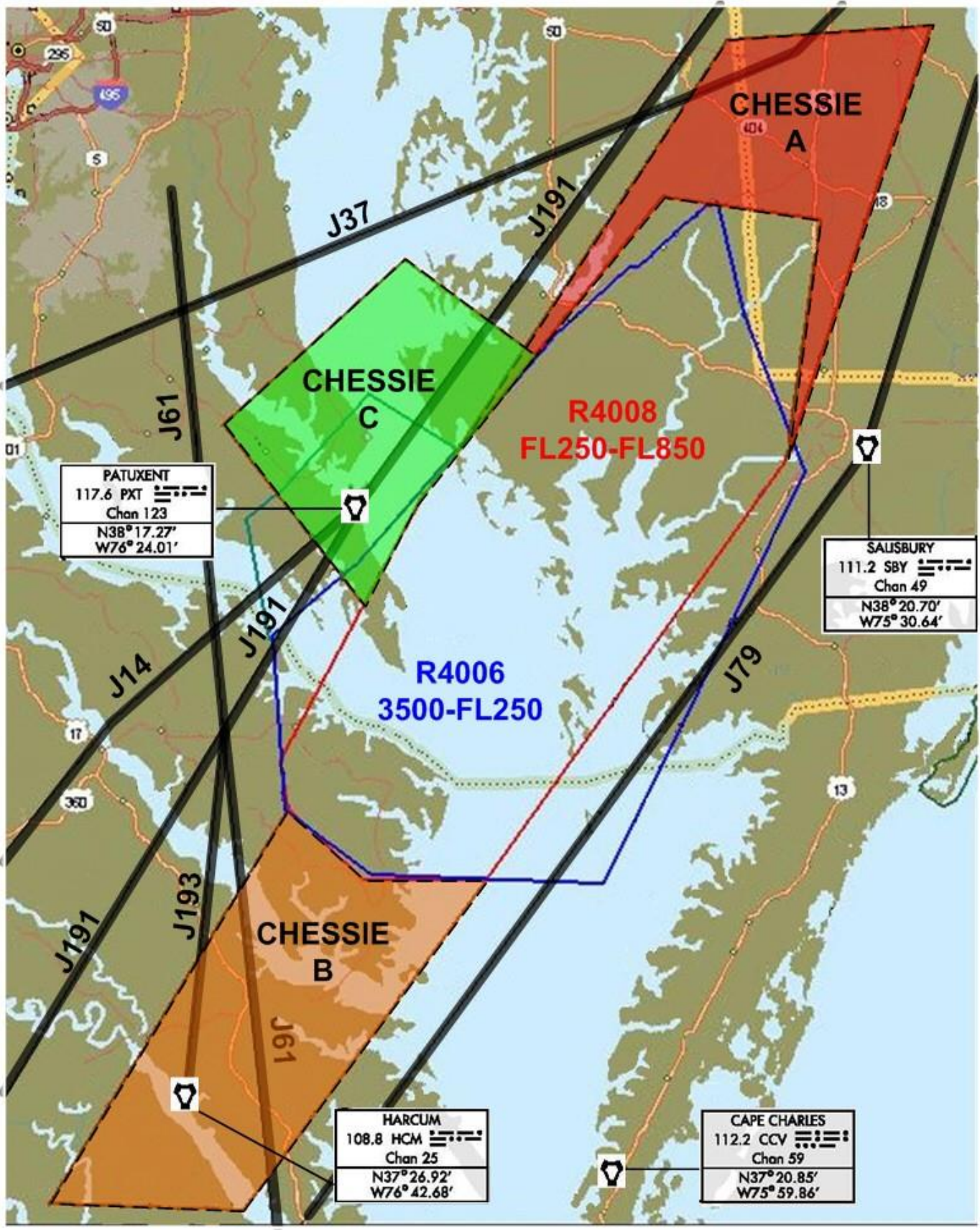


Illustration 11
Warning Areas (W-386)

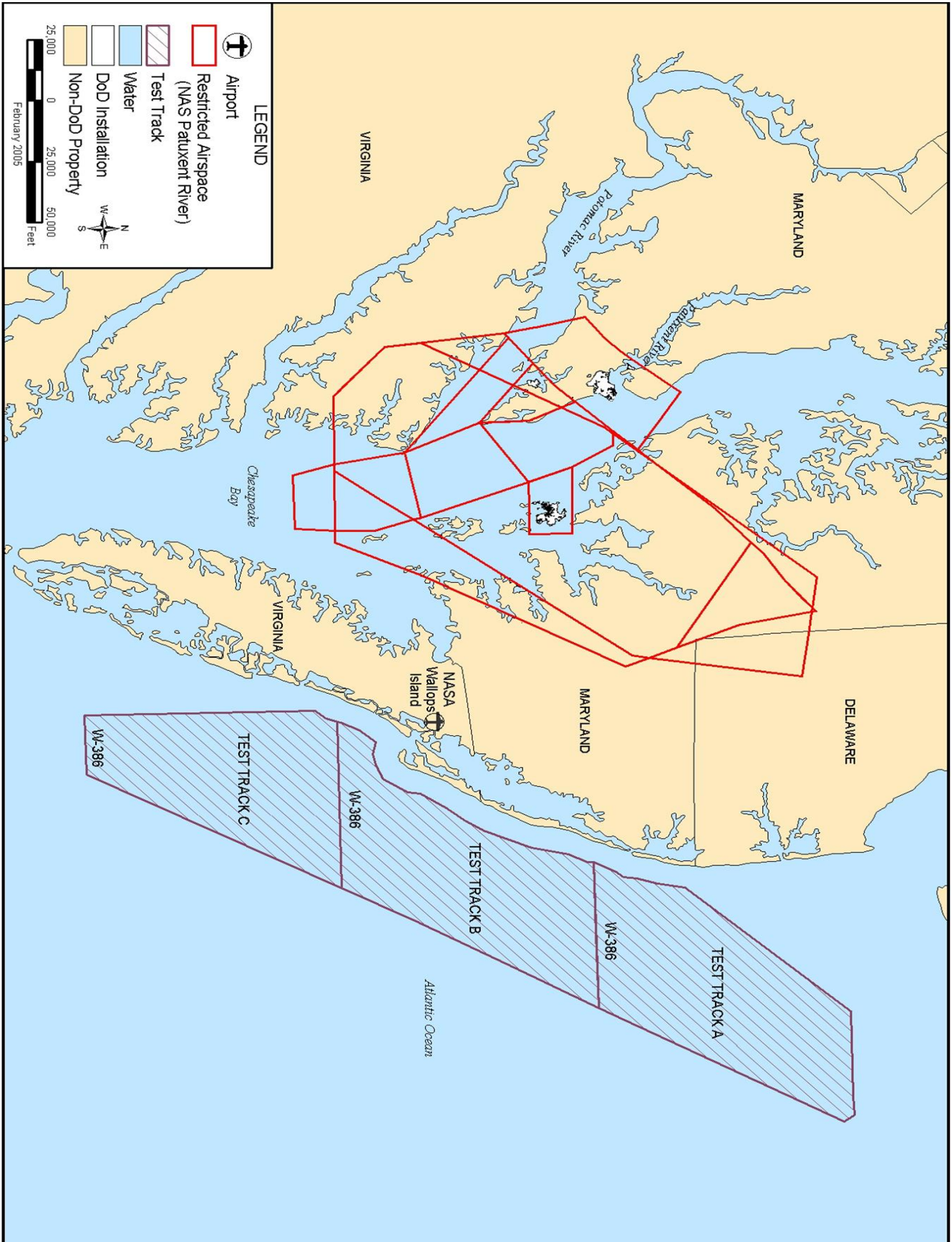


Illustration 12 Local Airports / VFR Corridors



Illustration 13
Helicopter Operating Areas

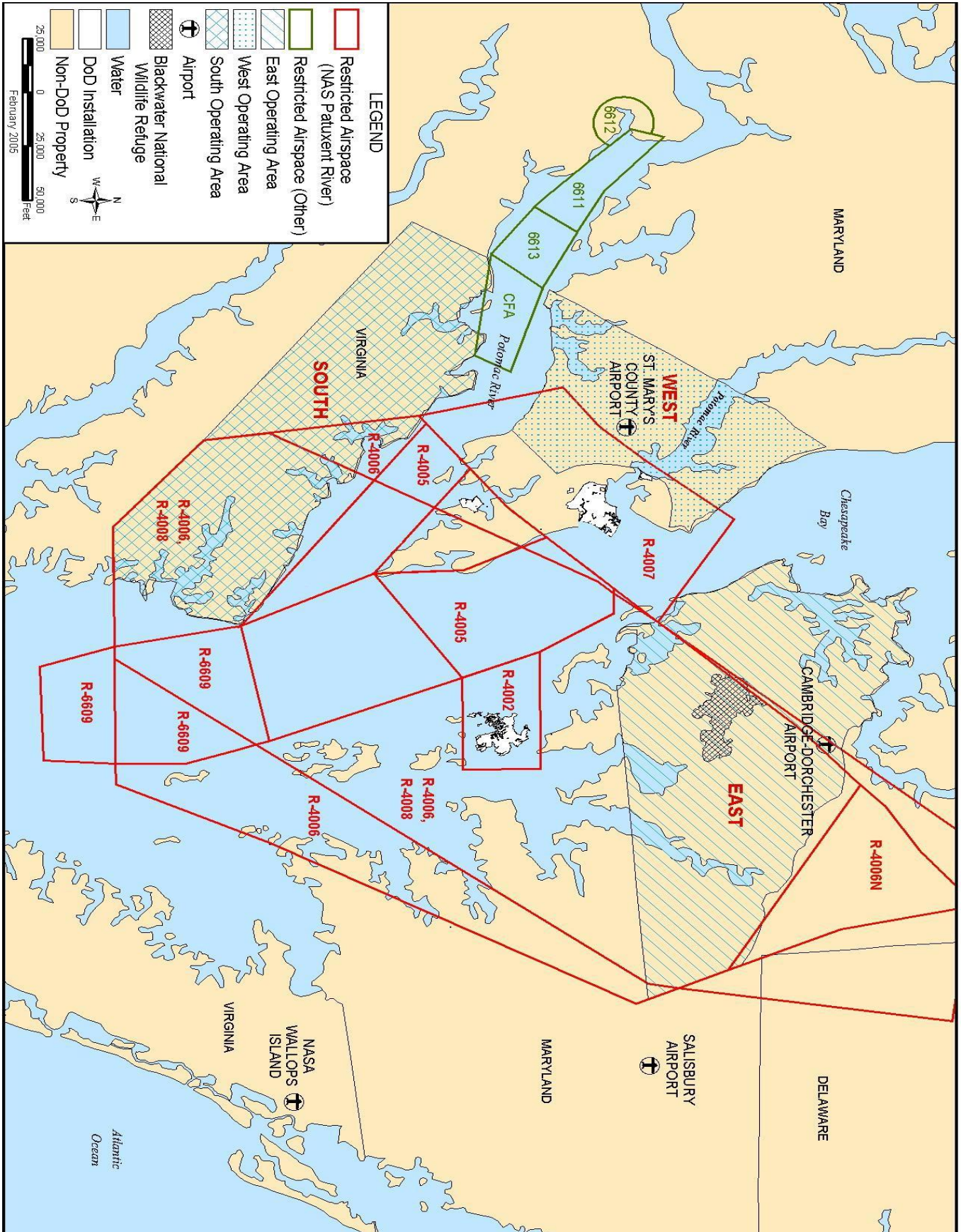


Illustration 14
Northwest Glider Operation Area



Illustration 15
Southwest Glider Operation Area



Illustration 16
Southeast Glider Operation Area

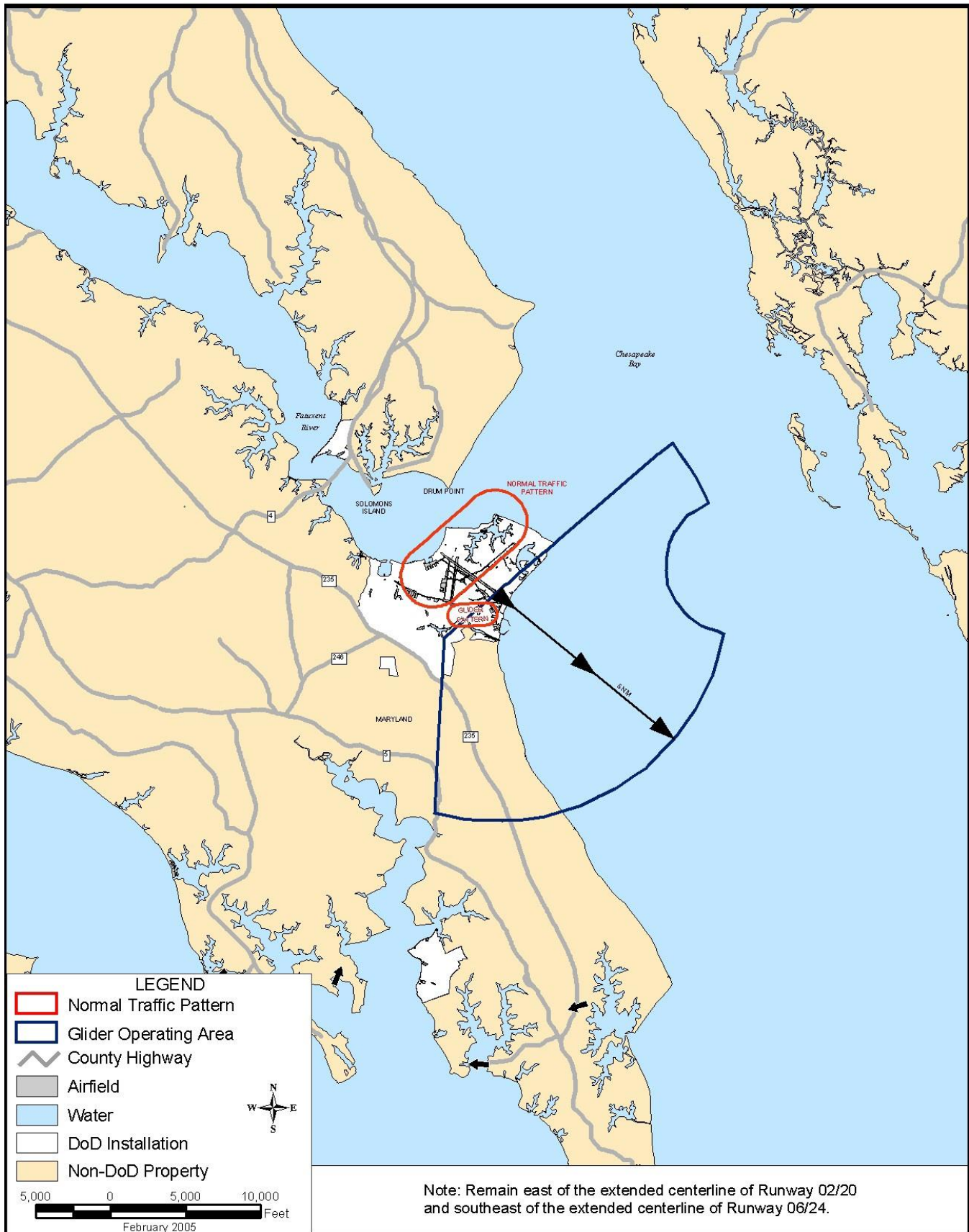


Illustration 17
Glider Entry and Release Points

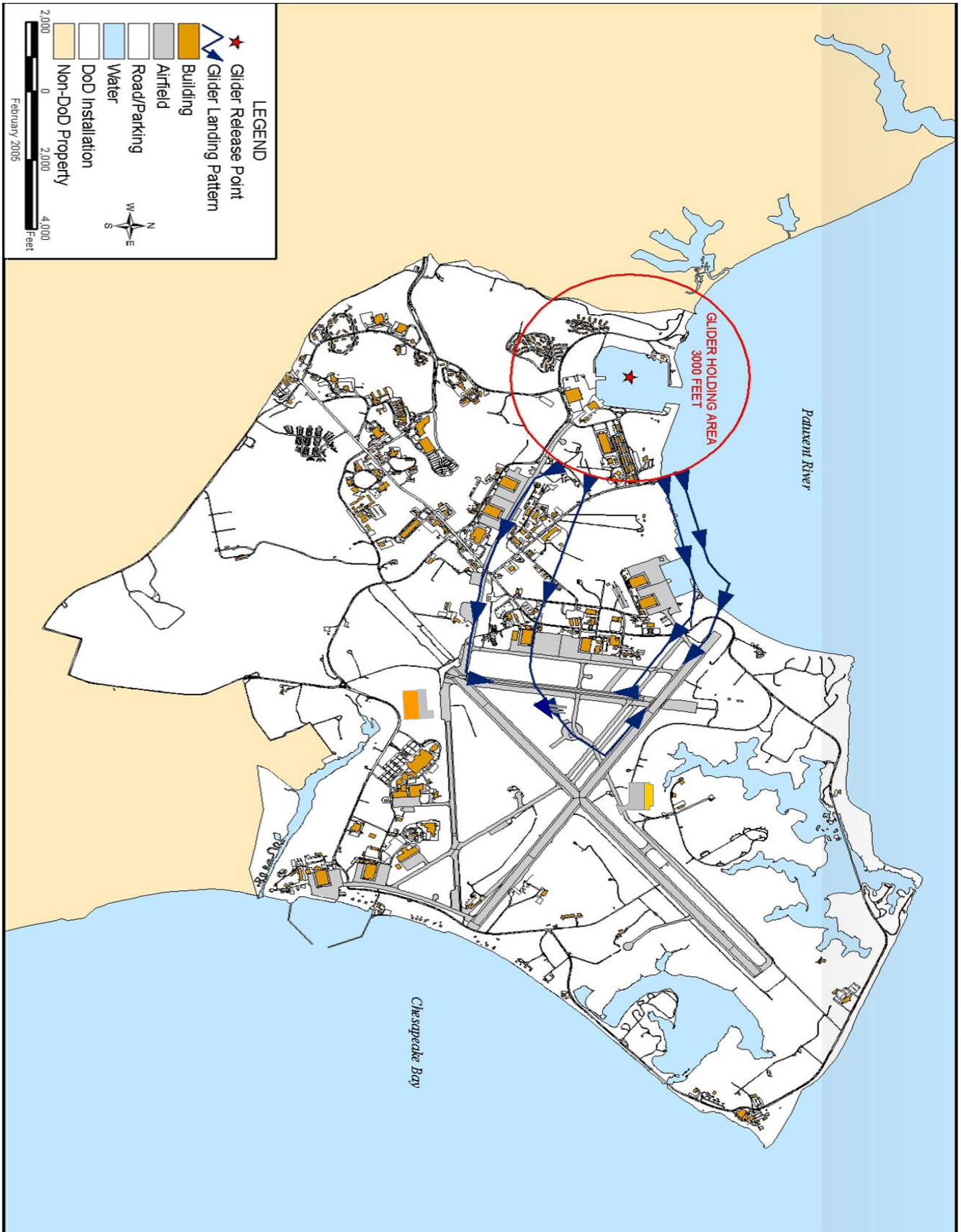


Illustration 18
OLF Webster Airfield Diagram

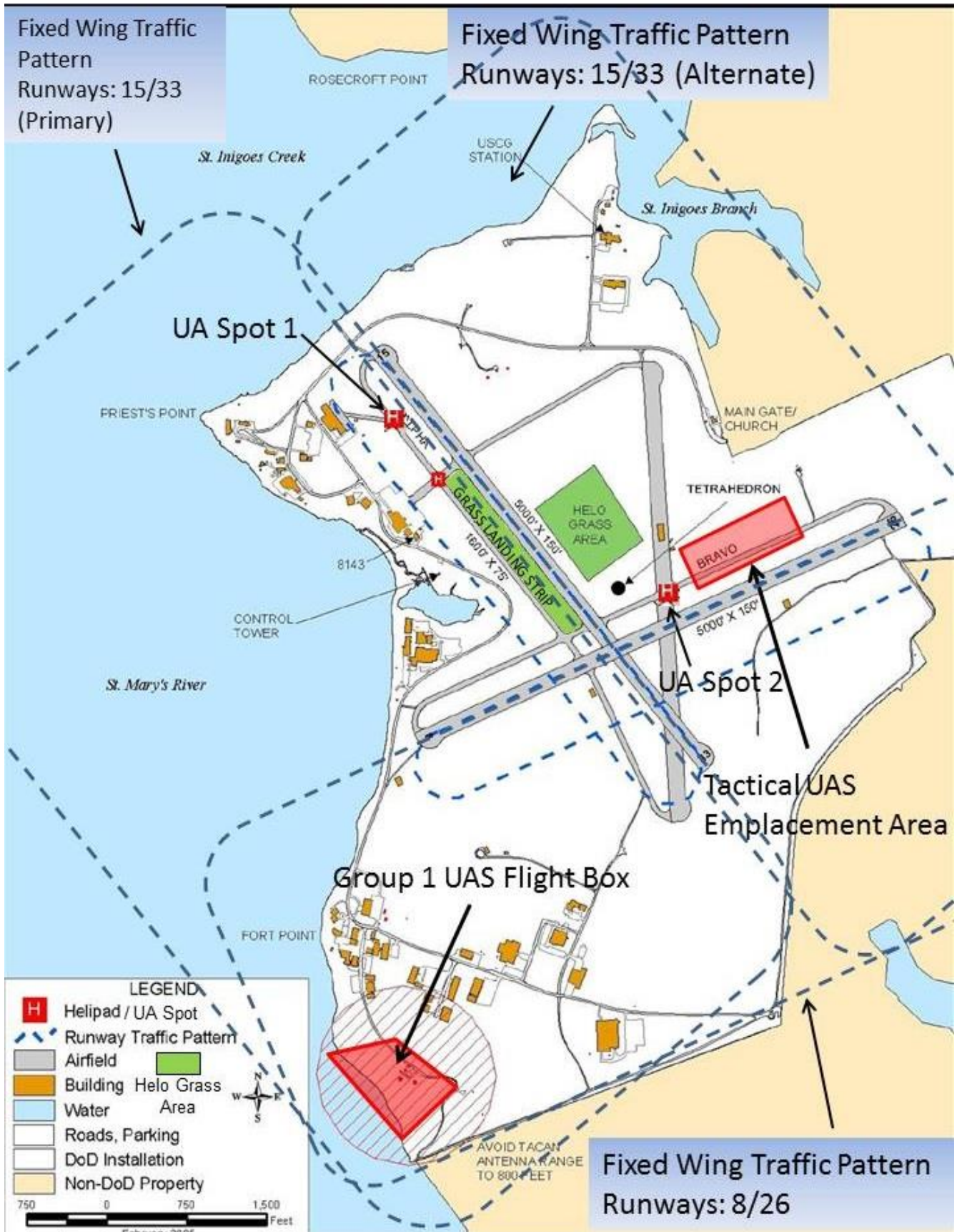


Illustration 18a
OLF Webster Field Small UA Box

WGS-84 coordinates

Point	Lat/Long	Point	Lat/Long
NW Corner	N 38° 08' 03.00"	NE Corner	N 38° 08' 06.00"
	W076° 26' 16.00"		W076° 26' 08.00"
SW Corner	N 38° 07' 55.00"	SE Corner	N 38° 08' 00.00"
	W076° 26' 07.00"		W076° 26' 00.00"



1 meter CIB

Illustration 19
OLF Webster Airspace

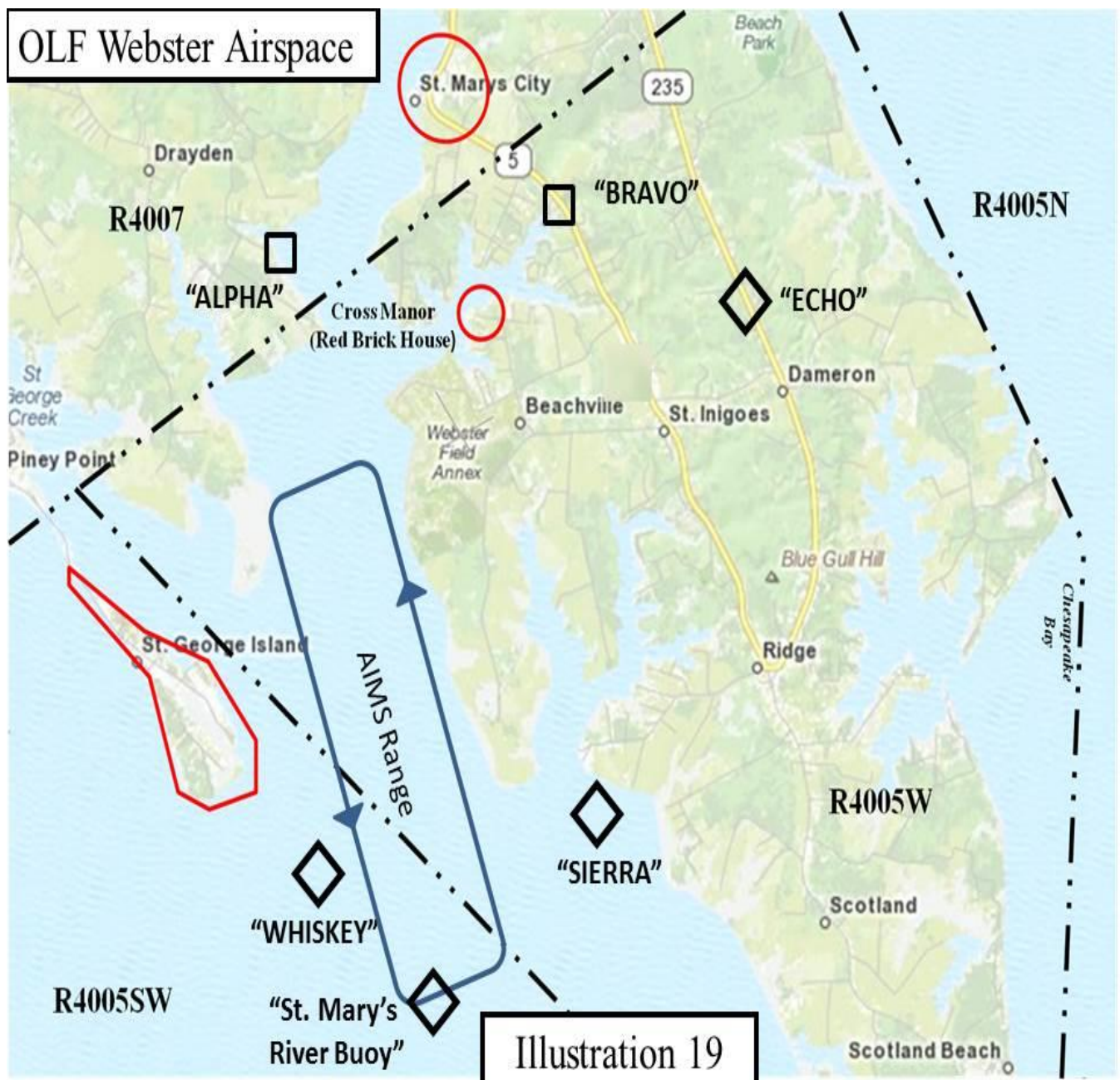


Illustration 19a
VTUAV Entry / Exit Routes

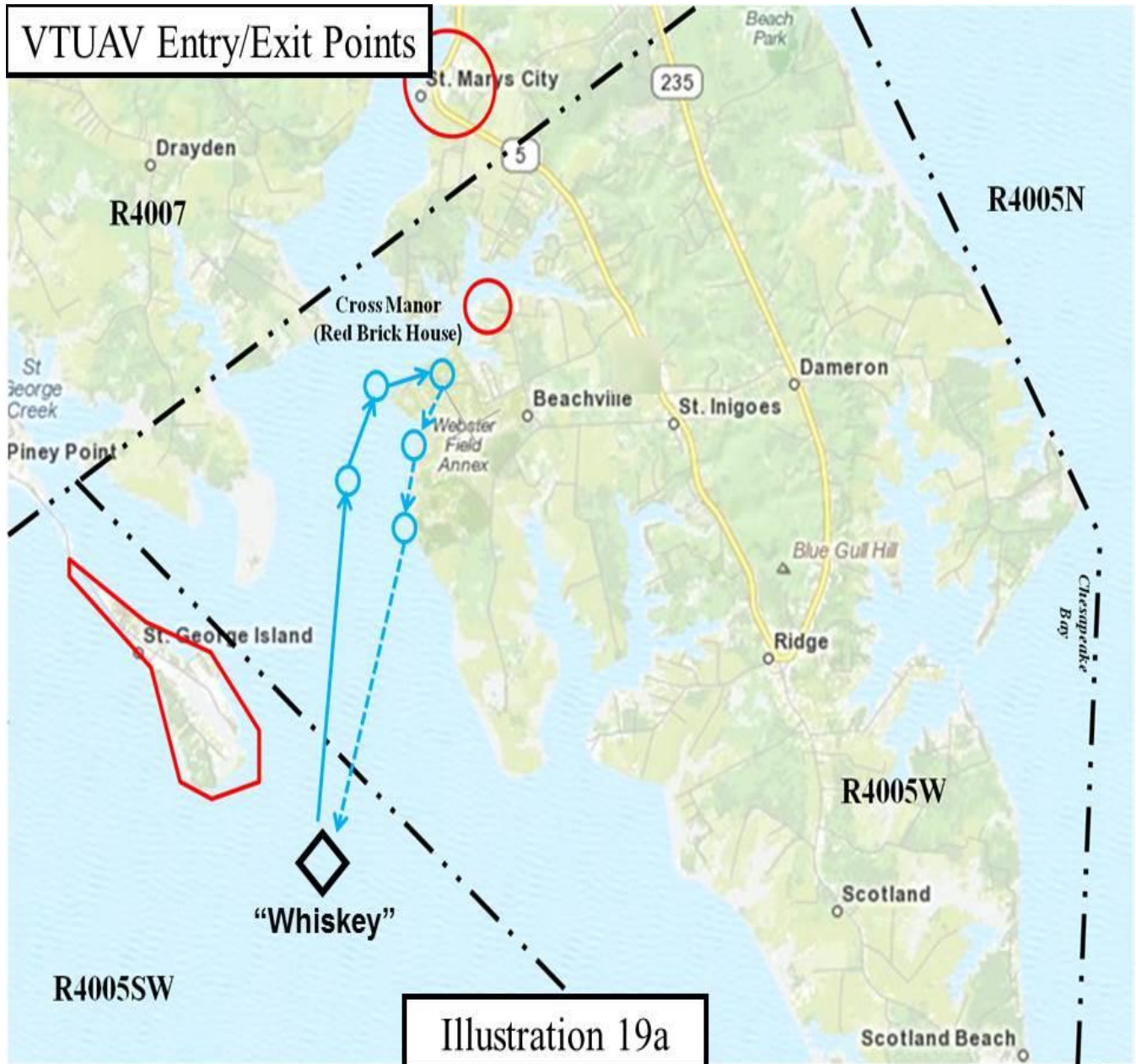


Illustration 20
UA Operating Area

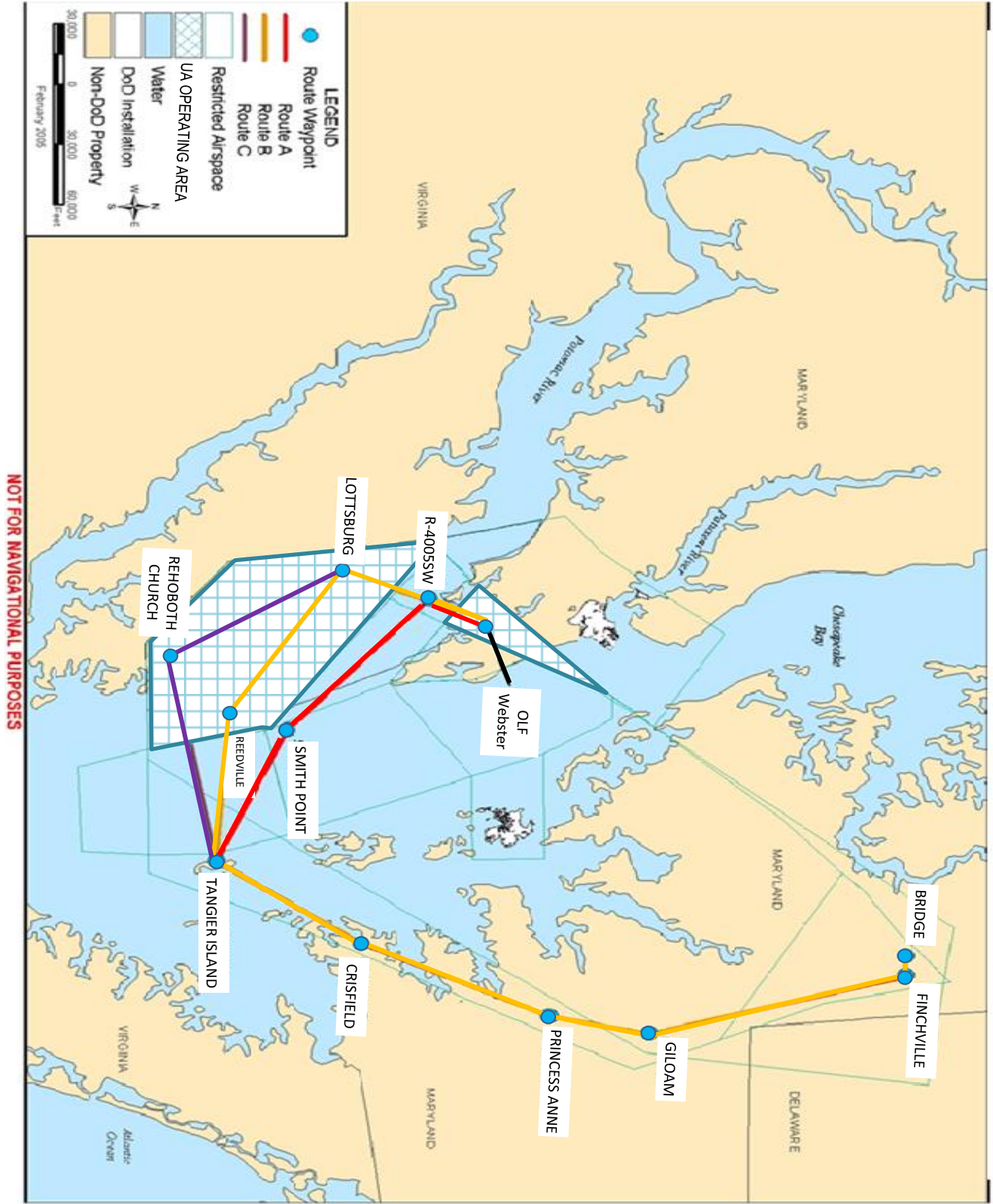
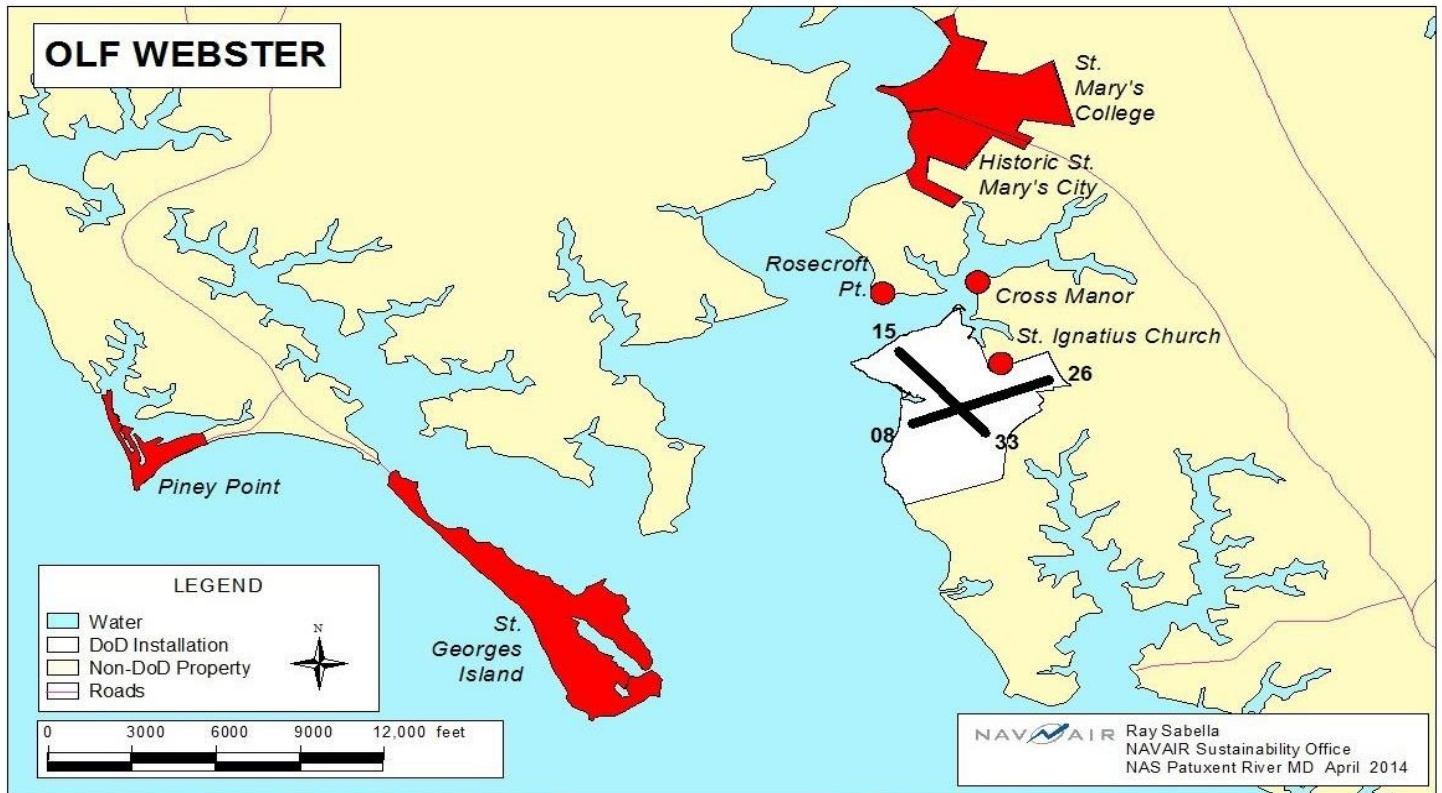
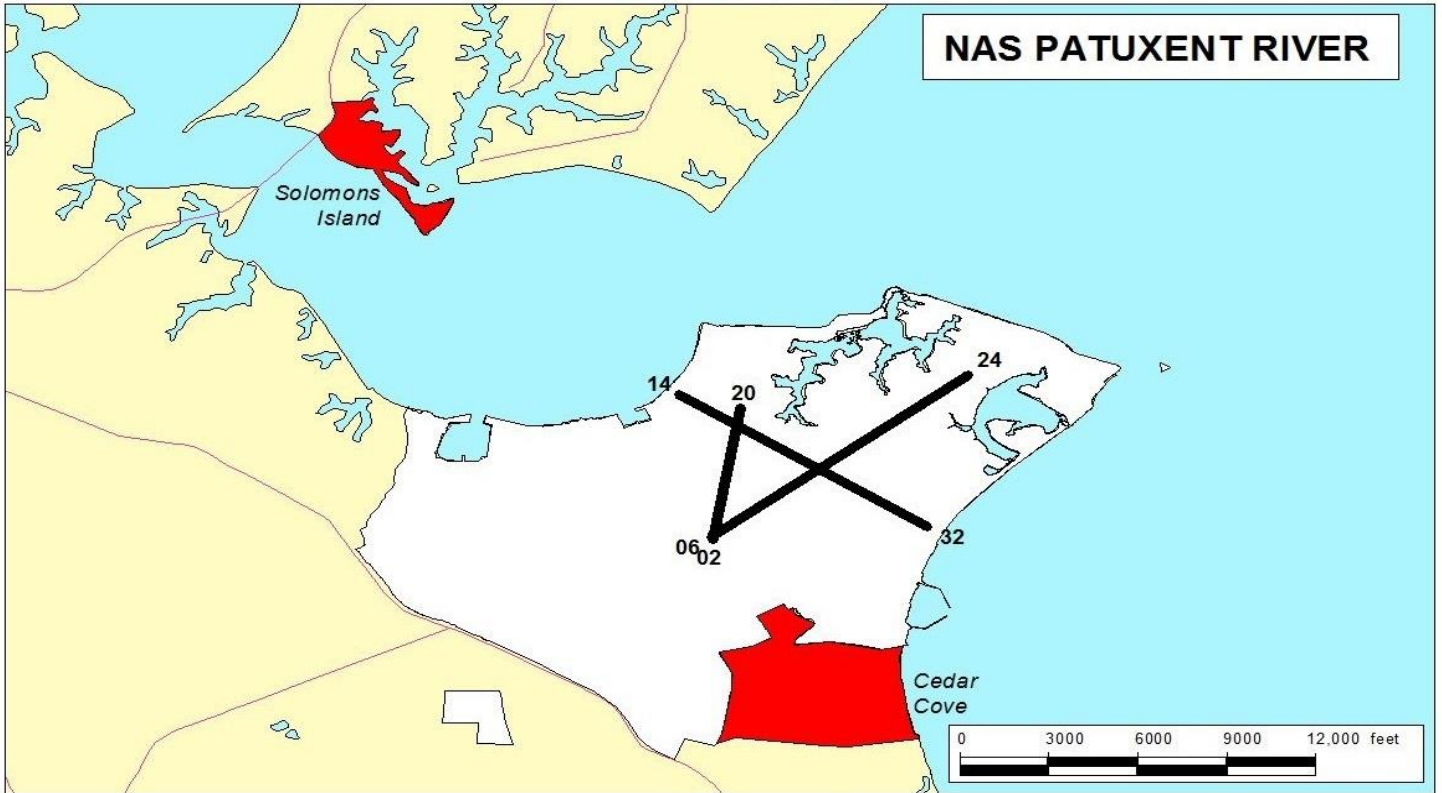


Illustration 21
Noise Abatement Areas



NOTE: Noise abatement policies, refer to paragraph 1.2.
Fixed Wing noise abatement, refer to paragraph 4.2.
Rotary Wing noise abatement, refer to paragraph 5.2.

Supersonic Flight Operations, refer to paragraph 6.9.
UAS noise abatement, refer to paragraph 6.10.2.
OLF Webster noise abatement, refer to paragraph 9.2.

Illustration 22
STOVL / Centerfield Arrivals / Departures

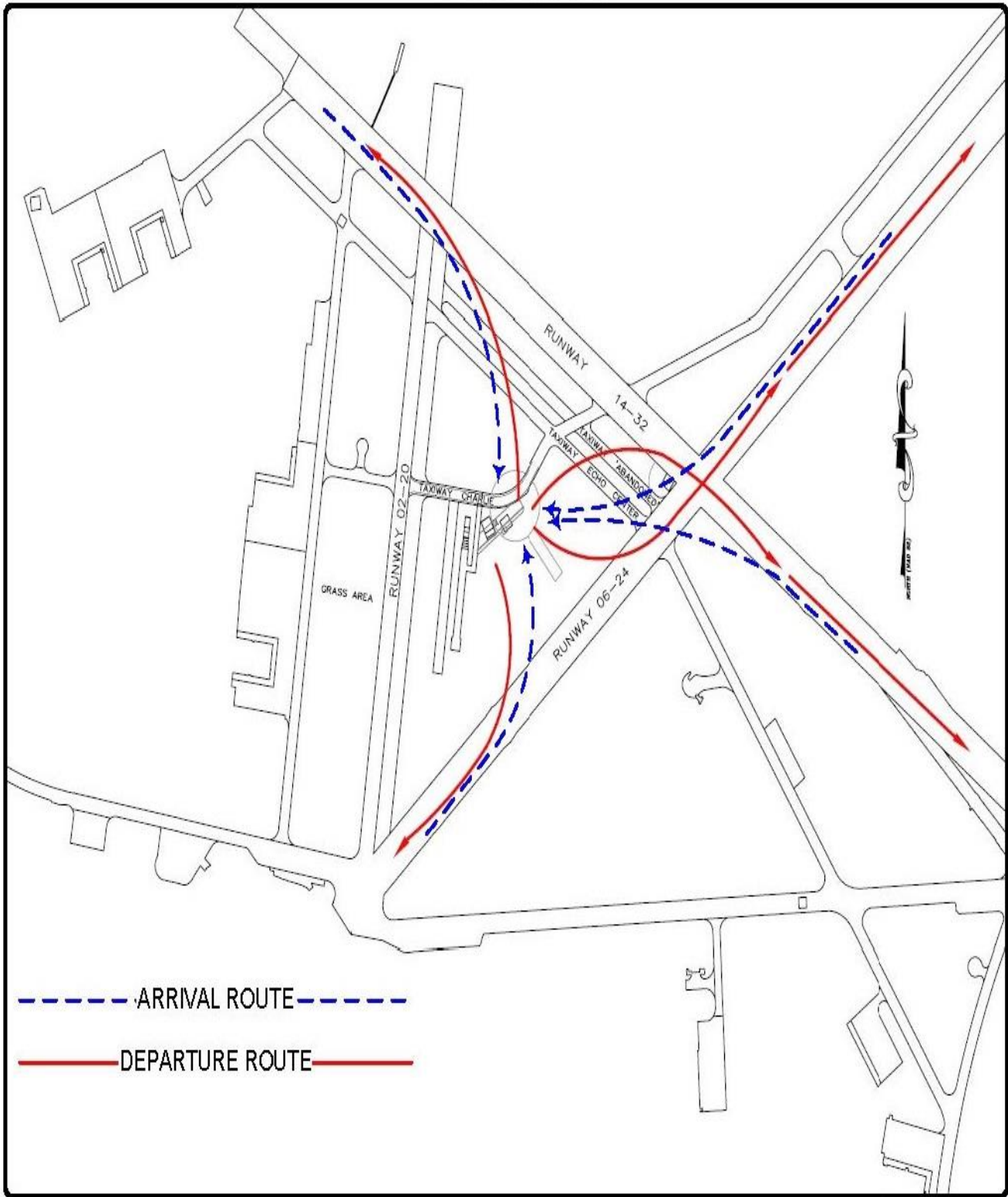


Illustration 23
Centerfield Facilities

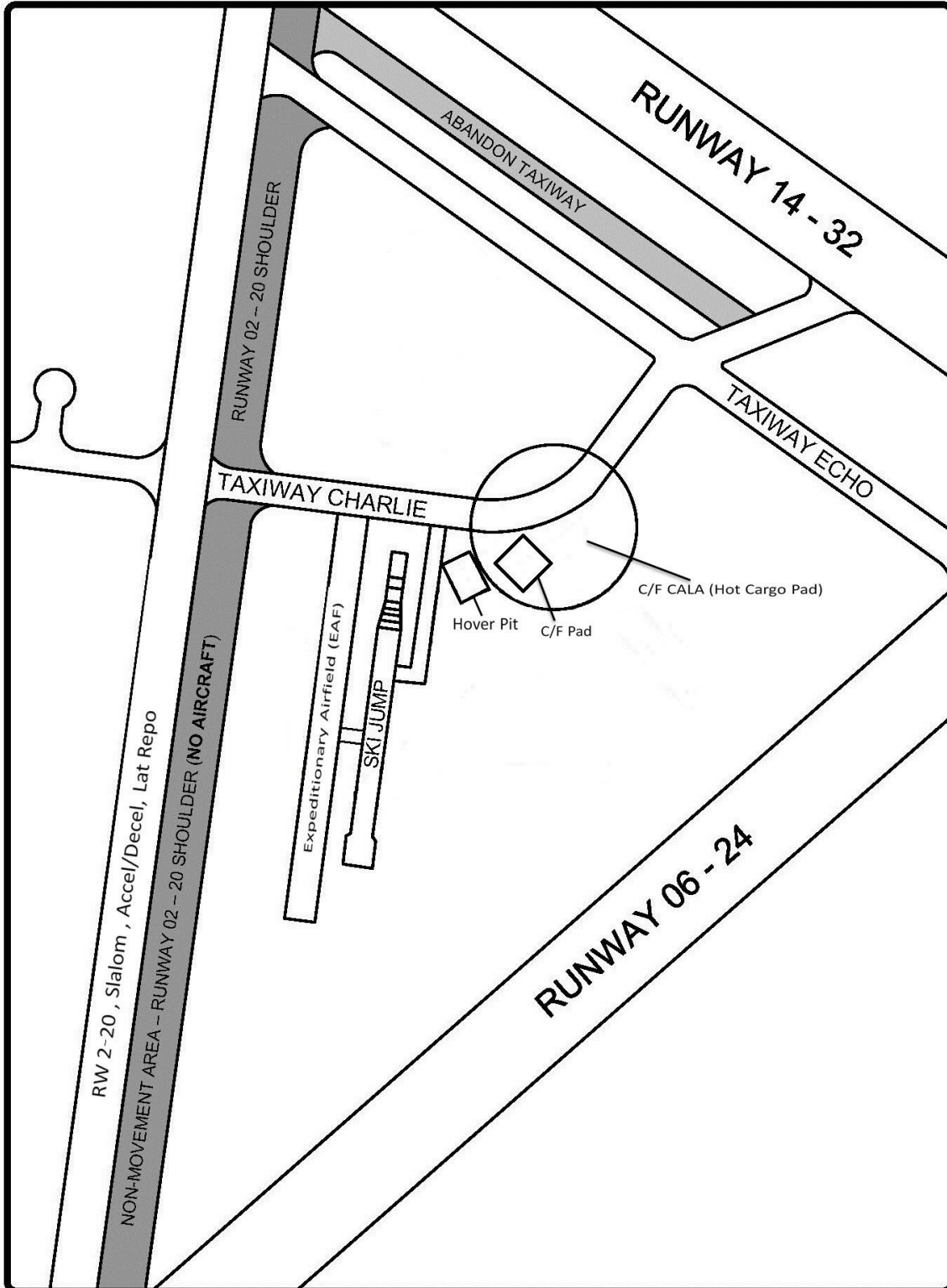


Illustration 24
Runway 32 Relocated Threshold

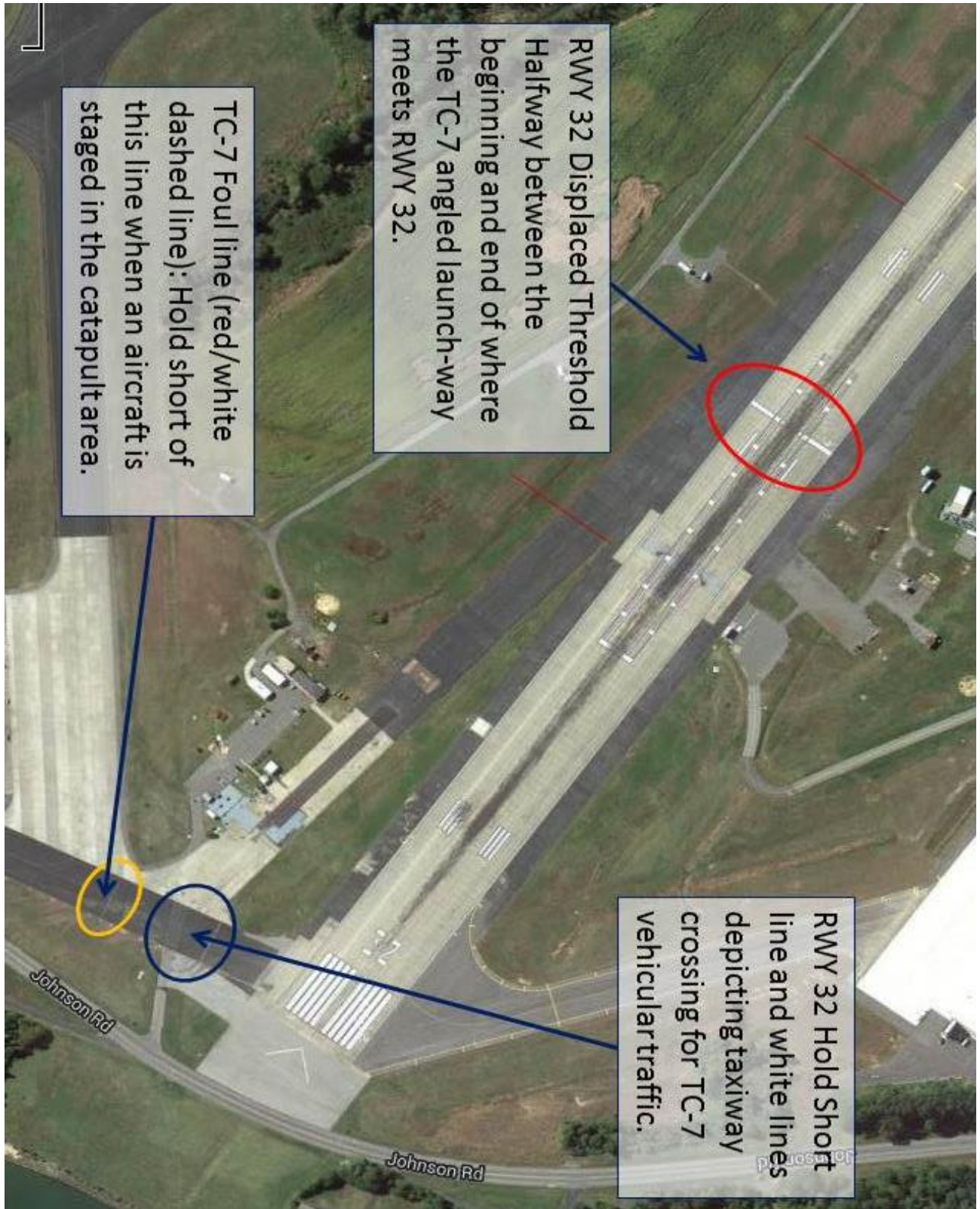


Illustration 25
VFR Procedures - BARREN Departures / Arrivals

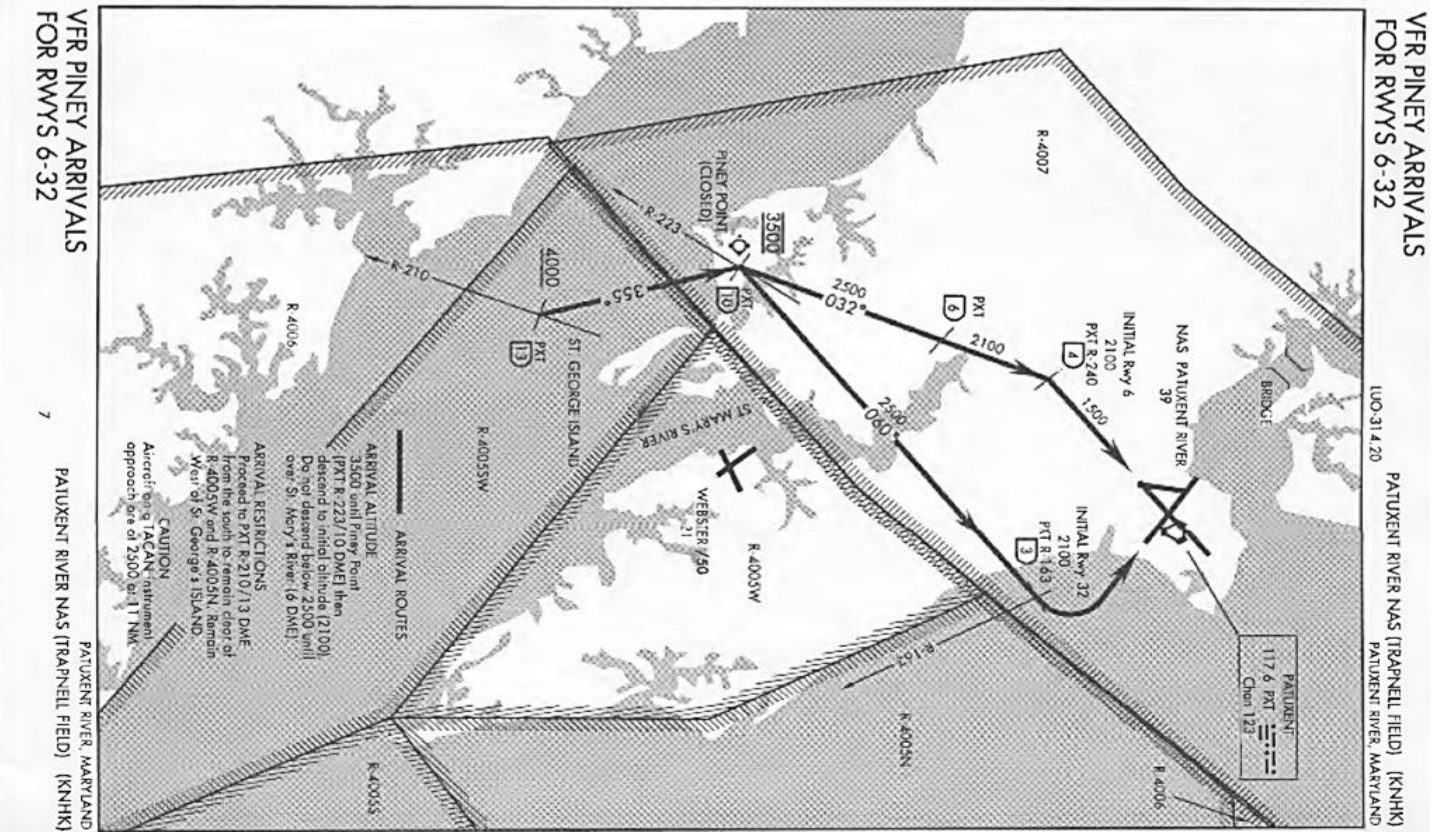
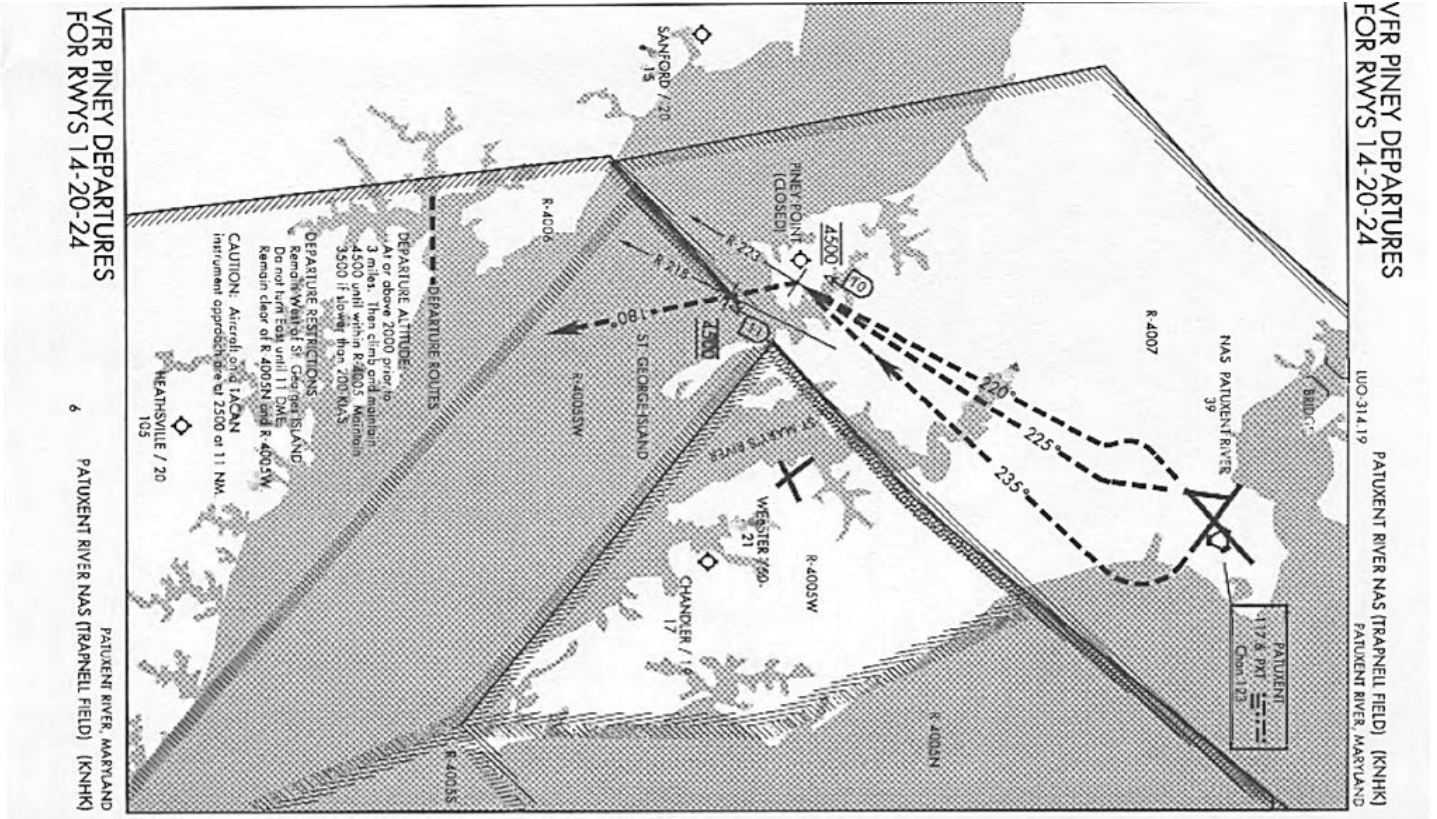
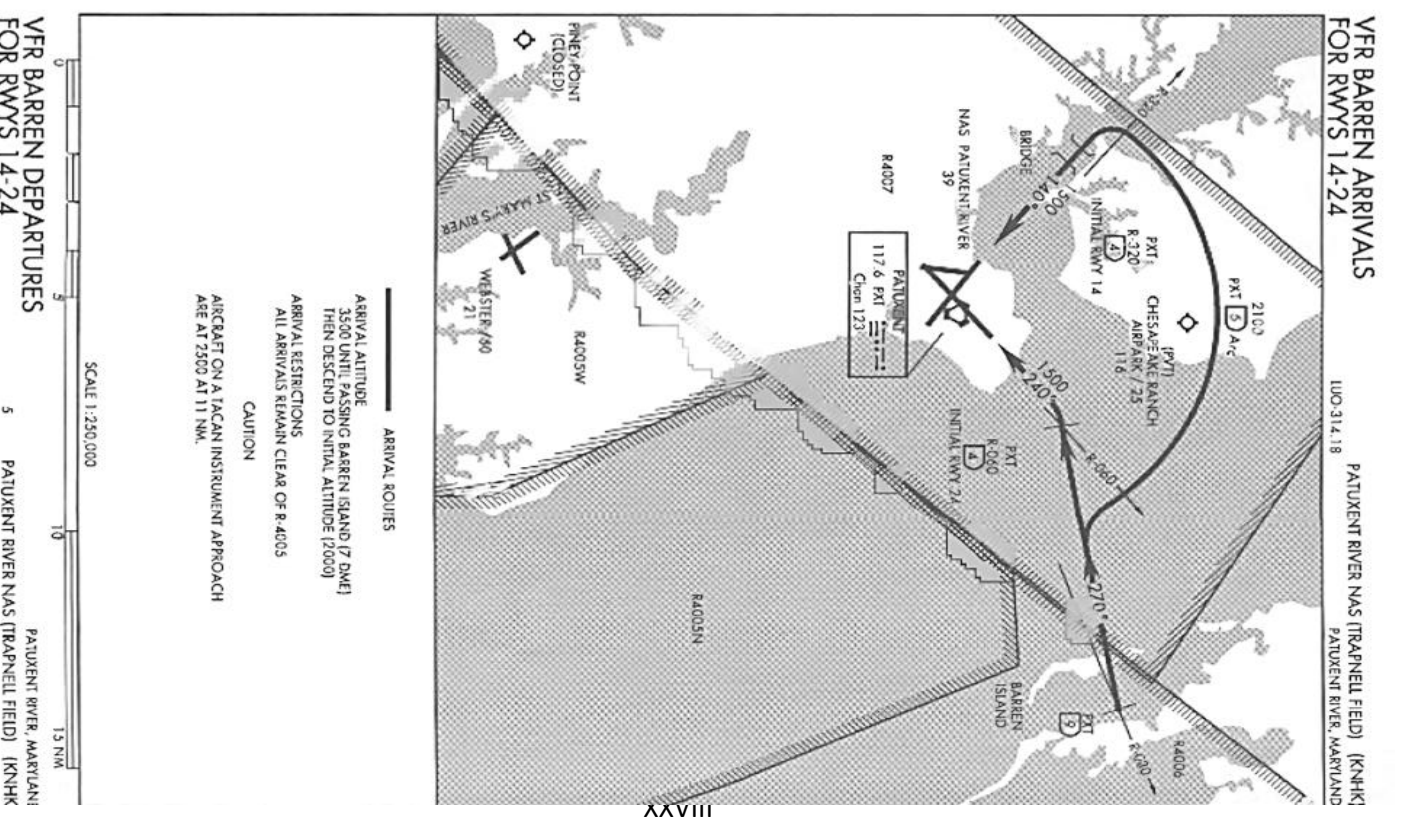
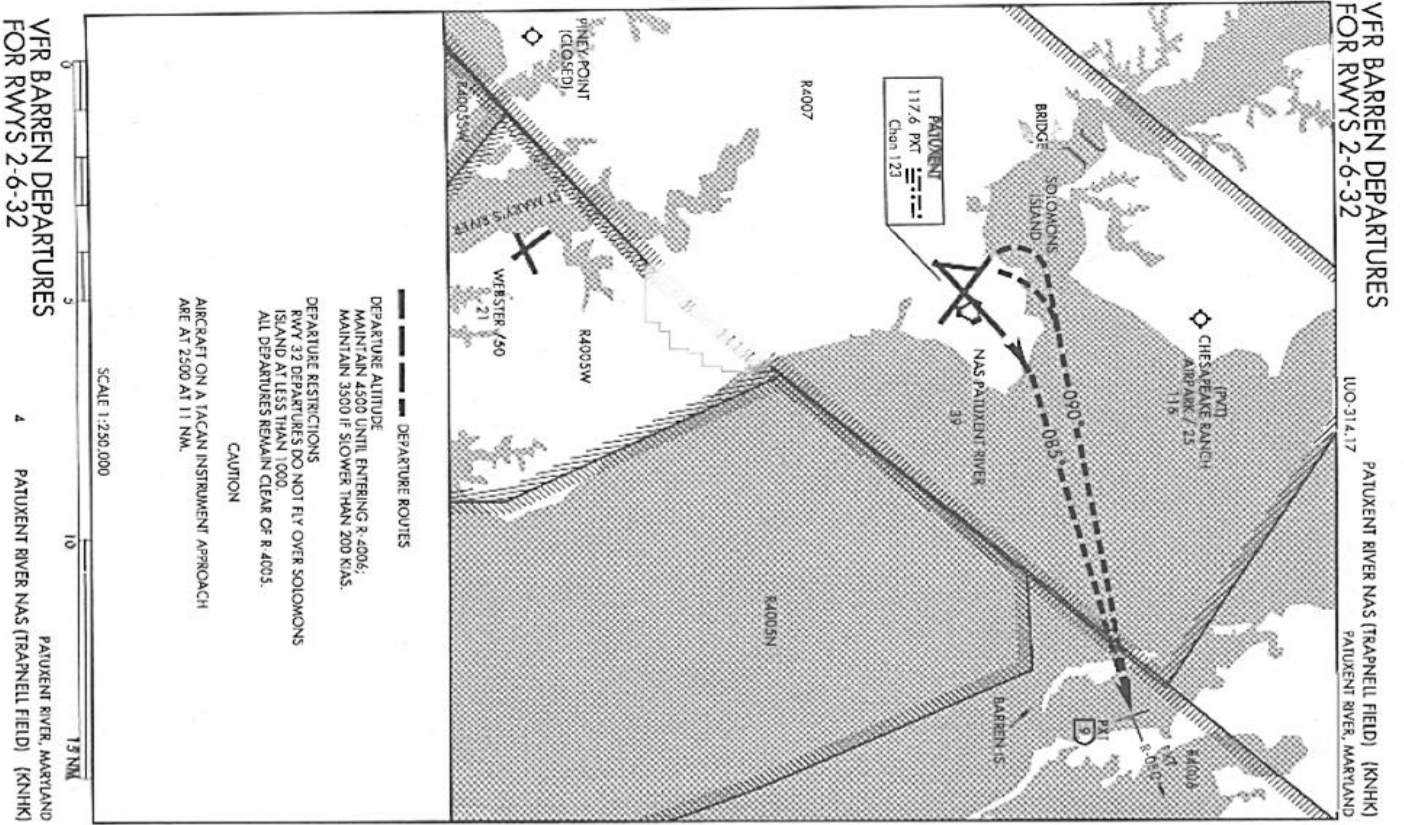


Illustration 25a
VFR Procedures - PINEY Departures / Arrivals



**APPENDIX A
REFERENCES**

#	DOCUMENT NUMBER	DOCUMENT TITLE	LOCATION
a	CNAF M-3710.7	NATOPS GENERAL FLIGHT & OPERATING INSTRUCTIONS	https://g2.cnlic.navy.mil/tscnrndw/NASPAT UXENTRIVERMD/N3/N322%20Documents/Forms/AllItems.aspx
b	NAVAIR 00-80T-124	NATOPS U.S. NAVY AIRFIELD OPERATIONS MANUAL	https://g2.cnlic.navy.mil/tscnrndw/NASPAT UXENTRIVERMD/N3/N322%20Documents/Forms/AllItems.aspx
c	NAVAIR 00-80T-114	NATOPS AIR TRAFFIC CONTROL MANUAL	https://g2.cnlic.navy.mil/tscnrndw/NASPAT UXENTRIVERMD/N3/N322%20Documents/Forms/AllItems.aspx
d	OPNAVINST 3770.2L	DON AIRSPACE PROCEDURES & PLANNING	https://doni.documentservices.dla.mil/opnav.aspx
e	OPNAVINST 3722.33 / FAA JO 7610.4	FEDERAL AVIATION ADMINISTRATION ORDER JO 7610.4 SPECIAL OPERATIONS / SPECIAL OPERATIONS	https://doni.documentservices.dla.mil/opnav.aspx/ https://g2.cnlic.navy.mil/tscnrndw/NASPAT UXENTRIVERMD/N3/N322%20Documents/Forms/AllItems.aspx
f	NASPAXRIVINST 13720.1C	FOREIGN OBJECT DAMAGE (FOD) PREVENTION PROGRAM	https://directives.navair.navy.mil/
g	NASPAXRIVINST 10341.1C	HOT REFUELING OF AIRCRAFT	https://directives.navair.navy.mil/
h	NAVTESTWINGLANT/ NASPAXRIVINST 13690.2D	PROCEDURES FOR SURVEY AND USE OF COMPASS ROSE	https://directives.navair.navy.mil/
i	OPNAVINST 5090.1D	ENVIROMENTAL READINESS PROGRAM	https://doni.documentservices.dla.mil/opnav.aspx
j	NASPAX Storm Water Pollution Prevention Plan (SWP3)	NASPAX Storm Water Pollution Prevention Plan (SWP3)	https://g2.cnlic.navy.mil/tscnrndw/NASPAT UXENTRIVERMD/N3/N322%20Documents/Forms/AllItems.aspx
k	NASPAXRIVINST 2200.1S	VOICE CALL SIGNS	https://directives.navair.navy.mil/
l	Aeronautical Information Manual/Federal Aviation Regulations (AIM/FAR)	AERONAUTICAL INFORMATION MANUAL / CODE OF FEDERAL REGULATIONS TITLE 14	https://www.faa.gov/air_traffic/publications/ https://www.ecfr.gov/cgi-bin/text-idx?c=ecfr&tpl=/ecfrbrowse/Title14/14tab_02.tpl
m	CNIC BIRD/ANIMAL AIRCRAFT STRIKE HAZARD (BASH) MANUAL	CNIC BIRD/ANIMAL AIRCRAFT STRIKE HAZARD (BASH) MANUAL	http://www.public.navy.mil/NAVSAFECEN/Pages/aviation/AirfieldOperations.aspx http://www.public.navy.mil/NAVSAFECEN/Pages/aviation/AirfieldOperations.aspx
n	OPNAVINST 3750.6S	NAVAL AVIATION SAFETY MANAGEMENT PROGRAM	https://doni.documentservices.dla.mil/opnav.aspx
o	NASPAXRIVINST 3750.5H	BIRD/ANIMAL AIRCRAFT STRIKE HAZARD (BASH) PROGRAM	https://directives.navair.navy.mil/
p	SECNAVINST 3770.1A	JOINT MILITARY AND CIVIL USE OF NAVY AND MARINE CORPS AVIATION INSTALLATIONS	https://doni.documentservices.dla.mil/secnav.aspx
q	FAA JO 7110.65 (Series)	AIR TRAFFIC CONTROL	https://www.faa.gov/regulations_policies/orders_notices/index.cfm/go/document/information/documentID/1028576
r	NASPAXRIVINST 5100.30H	HAZARDS OF	https://directives.navair.navy.mil/

		ELECTROMAGNETIC RADIATION TO ORDNANCE (HERO)	
s	NASPAXRIVINST 3722.1B	PRECISION APPROACH LANDING SYSTEM (PALS) PROCEDURES FOR FLEET SQUADRONS AT NAVAL AIR STATION (NAS) PATUXENT RIVER, MD	https://directives.navair.navy.mil/
t	FAA JO 8260.3C	TERMINAL INSTRUMENT PROCEDURES	https://www.faa.gov/regulations_policies/orders_notices/index.cfm/go/document.information/documentID/1029266
u	FAA JO 7400.2L	PROCEDURES HANDLING AIRSPACE MATTERS	https://www.faa.gov/regulations_policies/orders_notices/index.cfm/go/document.information/documentID/1031010
v	NAVAIRWARCENACDIVINST 5450.5D	PATUXENT CENTRAL SCHEDULING OFFICE	https://directives.navair.navy.mil/
w	COMUSFLTFORCOMINST 3120.26	FLEET OPERATING AREAS	https://usff.navy.deps.mil/sites/hq/n00/stfadmin/Shared%20Documents/Forms/Staff%20Admin.aspx?RootFolder=%2fsites%2fhq%2fn00%2fstfadmin%2fShared%20Documents%2fDirectives%2fFleet%20Instructions%2f3000%20Operations%20and%20Readiness&FolderCTID=0x01200074BE2C77B051B141A1A801CC6D6F5EBF *NOTE USE EMAIL CAC CERTIFICATE*
x	NAVAIR INST 3700.3	RANGE SAFETY POLICY	https://directives.navair.navy.mil/ *NOTE UNDER NAVAIR HQ INSTRUCTIONS*
y	NAVAIRWARCENACDIVINST 3710.1A	RANGE SAFETY MANUAL	https://directives.navair.navy.mil/
z	FACSFACVACAPEINST 3710.1B	NAVY DARE BOMBING RANGE COMPLEX OPERATIONS MANUAL	https://g2.cnicy.navy.mil/tscnrndw/NASPAT UXENTRIVERMD/N3/N322%20Documents/Forms/AllItems.aspx
aa	OPNAVINST 4630.25D	GOVERNMENT AIR TRANSPORTATION ELIGIBILITY	https://doni.documentservices.dla.mil/opnav.aspx
bb	OPNAVINST 4660.3A	DEPARTMENT OF THE NAVY AIR TERMINAL PROCEDURES	https://doni.documentservices.dla.mil/opnav.aspx
cc	OPNAVINST 3700.19E	FOREIGN MIL. LANDING CLEARANCE PROCEDURES	https://doni.documentservices.dla.mil/opnav.aspx
dd	NAVAIR 00-80R-14	NAVY AIRCRAFT EMERGENCY RESCUE	https://g2.cnicy.navy.mil/tscnrndw/NASPAT UXENTRIVERMD/N3/N322%20Documents/Forms/AllItems.aspx
ee	NASPAXRIVINST 3130.2F	SEARCH AND RESCUE (SAR)/MEDEVAC BILL	https://directives.navair.navy.mil/
ff	NAVTESTWINGLANTINST 3710.7A	NAVAL TEST WING ATLANTIC GENERAL FLIGHT AND OPERATING INSTRUCTIONS	https://directives.navair.navy.mil/
gg	NASPAXRIVINST 3750.2A	AVIATION SAFETY MANAGEMENT / AVIATION PREMISHAP PLAN AND REPORTING SYSTEM (SMS)	https://directives.navair.navy.mil/
hh	NAVSEA OP5, Vol. 1	AMMUNITION AND EXPLOSIVES SAFETY ASHORE	https://g2.cnicy.navy.mil/tscnrndw/NASPAT UXENTRIVERMD/N3/N322%20Documents/Forms/AllItems.aspx
ii	Airfield Pavement Condition (PCI) Survey Oct 2006	AIRFIELD PAVEMENT CONDITION SURVEY NAVAL AIR STATION PATUXENT RIVER LEXINGTON PARK, MARYLAND	https://g2.cnicy.navy.mil/tscnrndw/NASPAT UXENTRIVERMD/N3/N322%20Documents/Forms/AllItems.aspx

jj	EIS, NAS Patuxent River, MD, DEC 1998	FINAL ENVIRONMENTAL IMPACT STATEMENT PATUXENT RIVER	https://g2.cnlic.navy.mil/tscnrndw/NASPAT UXENTRIVERMD/N3/N322%20Documents/Forms/AllItems.aspx
kk	Preventative Control LOA	PREVENTATIVE CONTROL LOA	https://g2.cnlic.navy.mil/tscnrndw/NASPAT UXENTRIVERMD/N3/N322%20Documents/Forms/AllItems.aspx
ll	OPNAVINST 3721.5L	NAALS Program Manual	https://g2.cnlic.navy.mil/tscnrndw/NASPAT UXENTRIVERMD/N3/N322%20Documents/Forms/AllItems.aspx
mm	NASPAXRIVINST 5100.30H	Hazards Of Electromagnetic Radiation To Ordnance (HERO)	https://g2.cnlic.navy.mil/tscnrndw/NASPAT UXENTRIVERMD/N3/N322%20Documents/Forms/AllItems.aspx
nn	NAVFACINST 11010.45	Regional Planning Instruction – Site Approval Process	https://g2.cnlic.navy.mil/tscnrndw/NASPAT UXENTRIVERMD/N3/N322%20Documents/Forms/AllItems.aspx
oo	NWP 1-03.1	Operational Reports (NOTAL)	https://g2.cnlic.navy.mil/tscnrndw/NASPAT UXENTRIVERMD/N3/N322%20Documents/Forms/AllItems.aspx
pp	UFC 4-133-01N	Unified Facilities Criteria (UFC) Navy Air Traffic Control Facilities	https://g2.cnlic.navy.mil/tscnrndw/NASPAT UXENTRIVERMD/N3/N322%20Documents/Forms/AllItems.aspx

APPENDIX B

LIST OF ABBREVIATIONS/ACRONYMS

AVOIC. Airfield Vehicle Operator Instructor Course

A

ADIZ. Air Defense Identification Zone

ADS. Aeronautical Design Standard-33

AFM. Airfield Management

AFS. Airfield Services

AGL. Above Ground Level

AIM. Aeronautical Information Manual

AIMS. Altitude Identification and Measuring System

AODO. Air Operations Duty Officer

ARFF. Aircraft Rescue and Firefighting

ARTCC. Air Route Traffic Control Center

ASOS. Automated Surface Observing Systems

ASR. Air Surveillance Radar

ASWEP. Anti-Submarine Warfare Environ-Mental Product

ATC. Air Traffic Control.

ATCAA. Air Traffic Control Assigned Airspace.

ATCF. Air Traffic Control Facility

ATCFO. Air Traffic Control Facility Officer

ATIS. Automatic Terminal Information System

ATR. Atlantic Test Range

AVO. Air Vehicle Operator

B

BASH. Bird/Animal Aircraft Strike Hazard

C

CAL. Confined Area Landing

CALA. Combat Aircraft Loading Area

CATM. Captive Air Training Missile

CBQ. Combined Bachelor Quarters

CBU. Cluster Bomb Unit

CDO. Command Duty Officer

CDP. Cross-deck Pendant

CFR. Code of Federal Regulations

CGE. Cambridge-Dorchester

CNO. Chief of Naval Operations

CNMOC. Commander, Naval Meteorology and Oceanography Command

CO. Commanding Officer

COA. Certificate of Authorization

COMM. Commercial Phone

COMNAVAILRLANT. Commander, Naval Air Force Atlantic

COMNAVAIRSYSCOM. Commander, Naval Air Systems Command

COMNAVAIRWARCENACDIV. Commander,
Naval Air Warfare Center, Aircraft Division

D

DF. Direction Finding

DINS. Defense Internet NOTAM Services

DLA. Defense Logistics Agency

DMA. Defense Mapping Agency

DME. Distance Measuring Equipment

DOD. Department of Defense

DP. Departure Procedure

DSN. Defense Switch Network

DV. Distinguished Visitor

E

EAF. Expeditionary Airfield

EDT. Eastern Daylight Time

ELMR. Enterprise Land Mobile Radio

ELT. Emergency Locator Transmitter.

EPA. Environmental Protection Agency

EST. Eastern Standard Time

ETA. Estimated Time of Arrival

ETD. Estimated Time of Departure

ETE. Estimated Time Enroute

F

FAA. Federal Aviation Administration

FACSFAC. Fleet Area Control and Surveillance
Facility

FAR. Federal Aviation Regulations

FCLP. Field Carrier Landing Practice

FFVC. See FACSFAC and VACAPES

FIH. Flight Information Handbook

FIST. Flight Information Scheduling and Tracking

FL. Flight Level

FLIP. Flight Information Publication

FOD. Foreign Object Damage

FRC. Fleet Readiness Center Mid Atlantic Site
Patuxent River

FSS. Flight Service Station

FWB. Flight Weather

FWS. Facility Watch Supervisor

G

GCA. Ground Controlled Approach

GEM. General Electronics Maintenance

GPS. Global Positioning System

H

HEI. High Explosive Incendiary

HELO. Helicopter

HERO. Hazards of Electromagnetic Radiation to
Ordnance

HX-21. Air Test and Evaluation Squadron TWO-
ONE

I

IAW. In Accordance With

ICAO. International Civil Aviation Organization

IFF. Identification Friend or Foe

IFR. Instrument Flight Rules

IMC. Instrument Meteorological Conditions

IR. IFR Military Training Route

J

JSF. Joint Strike Fighter

K

KIAS. Knots Indicated Airspeed

KNUI. Webster Airfield

KWAL. Wallops Flight Facility

L

L. Local Time

LLWAS. Low Level Windshear Alert System

LOA. Letter of Agreement

LOI. Letter of Instruction

LSO. Landing Signal Officer

LZ. Landing Zone

M

MARSA. Military Assumes Responsibility for Separation of Aircraft

MCAS. Marine Corps Air Station

MD. Maryland

MEDEVAC. Medical Emergency Evacuation

MRU. Military Radar Unit

MSL. Mean Sea Level

MTR. Military Training Route

N

N2L. Navy Foreign Liaison Office

NAFC. Naval Aviation Forecast Center

NAS. Naval Air Station

NASA. National Aeronautics and Space Administration

NATOPS. Naval Air Training and Operating Procedures Standardization

NAVAID. Navigation Aid

NAWCAD. Naval Air Warfare Center, Aircraft Division

NDB. Non-Directional Radio Beacon

NHK. NAS Patuxent River three letter identifier

NLMOD. Naval Atlantic Meteorology and Oceanography Detachment

NM. Nautical Mile

NOTAM(s). Notice(s) to Airmen

NTWL. Navy Test Wing Atlantic

NUI. OLF Webster Three Letter Identifier

NVD. Night Vision Device

O

OLF. Outlying Field

OLS. Optical Landing System

OPARS. Optimal Path Aircraft Routing System

OTP. VFR-ON-TOP

OTT. Nottingham VORTAC

P

PA. Public Address

PALS. Precision Approach Landing System

PAR. Precision Approach Radar

PCL. Pilot Controlled Lighting
PIC. Pilot in Command
PPA. Practiced Precautionary Approaches
PPEL. Practice Precautionary Emergency Landing
PPR. Prior Permission Required
PW. Public Works
PXOA. Patuxent River Operating Area (Restricted Areas)
PXT. Patuxent VORTAC three letter identifier

Q

R

RAL. Requested Altitude
RDC. Regional Dispatch Center
RDT&E. Research, Development, Test, and Evaluation
RHP. Return Home Point
ROICC. Resident Officer in Charge of Construction
RSRS. Reduced Same Runway Separation
RS-SOP. Range Safety Standard Operating Procedures
RTB. Return to Base

S

SAR. Search and Rescue
SATO. Scheduled Airline Travel Office
SFO. Simulated Flameout Approach
SFRA. Special Flight Ruses Area
SIF. Selective Identification Feature
SID. Standard Instrument Departure

SM. Statute Mile
SO. Sustainability Office
SOP. Standard Operating Procedure
STOL. Short Takeoff and Landing
STOVL. Short Takeoff Vertical Landing
SUA. Special Use Airspace
SUS. Sounding Underwater Sensor
SVFR. Special Visual Flight Rules

T

TACAMO. Take Charge and Move Out
TACAN. Tactical Air Navigation
TELEFAX. Telephone facsimile
TERF. Terrain Area Flight/Route
TERPS. Terminal instrument procedures
TFOA. Things falling off aircraft
TP. Target Practice
TPS. Test Pilot School
TRACON. Terminal Radar Approach Control

U

UA. Unmanned Aircraft
UHF. Ultrahigh frequency
UAS. Unmanned Aircraft System
USAF. United States Air Force
USN. United States Navy
UTC. Coordinated Universal Time

V

VACAPES. Virginia Capes Operating Area

VFR. Visual Flight Rules

VMC. Visual Meteorological Conditions

VOR. VHF Omni-Directional Range

VORTAC. See VOR and TACAN

VR. VFR Military

VTO. Vertical Take Off

VTOL. Vertical Takeoff and Landing

VTUA. Rotary Wing UA

VX-20. Air Test and Evaluation Squadron TWO-ZERO

VX-23. Air Test and Evaluation Squadron TWO-THREE

WXYZ