



iMovie HD

Basics

Faculty Multimedia Center
212 Rider Building II
227 W. Beaver Ave.
(814) 863-7051
fmc@psu.edu
<http://tlt.its.psu.edu/fmc>

iMovie Basics Tutorial Description

iMovie Basics: Prerequisite(s): Basic computing skills; familiarity with the Macintosh platform.

Apple's iMovie 4 is an easy-to-use digital video editing application. It provides users with an intuitive interface to capture, edit, and export video to a range of QuickTime formats as well as to iDVD and/or back to videotape.

Objectives:

- Become familiar with iMovie 4 interface
- Capture, import, and edit media
- Add titles and transitions
- Create a movie and share it.

Alternative Media Statement and Nondiscrimination Policy

This publication is available in alternative media on request.

The Pennsylvania State University is committed to the policy that all persons shall have equal access to programs, facilities, admission, and employment without regard to personal characteristics not related to ability, performance, or qualifications as determined by University policy or by state or federal authorities. It is the policy of the University to maintain an academic and work environment free of discrimination, including harassment. The Pennsylvania State University prohibits discrimination and harassment against any person because of age, ancestry, color, disability or handicap, national origin, race, religious creed, sex, sexual orientation, or veteran status. Discrimination or harassment against faculty, staff, or students will not be tolerated at The Pennsylvania State University. Direct all inquiries regarding the nondiscrimination policy to the Affirmative Action Director, The Pennsylvania State University, 328 Boucke Building, University Park, PA 16802-5901; Tel 814-865-4700/V, 814-863-1150/TTY.

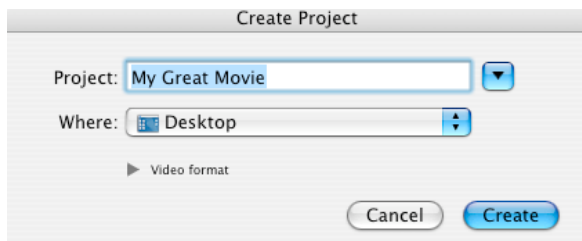
Contents

Introduction to iMovie

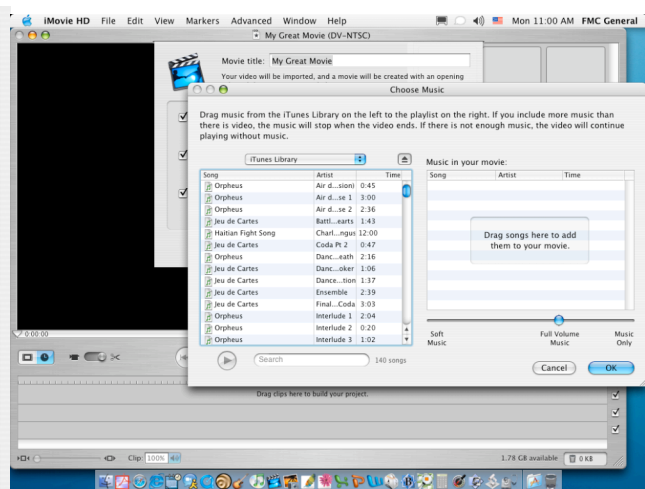
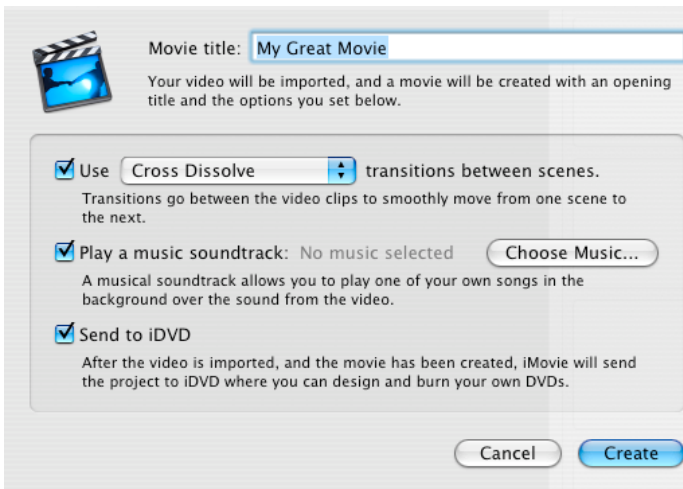
- I. Capturing and Importing Media**
 - A. Capturing Media**
 - B. Importing Images**
 - C. Changing Duration of still images**
- II. Editing Video Clips**
 - A. Arranging Clips**
 - B. Cropping Clips**
 - C. Splitting Clips**
 - D. Using Cut, Copy, and Paste**
 - E. Adding Video Effects**
 - F. Changing a Clip's Speed/Direction**
 - G. Adding Scene Transitions**
 - H. Renaming Clips**
- III. Adding Audio**
 - A. Adding Sound from an Audio CD**
 - B. Importing Audio Files**
 - C. Adding Sound Effects**
 - D. Adding Voice Narration**
 - E. Cropping Audio Clips**
 - F. Splitting Audio Clips**
 - G. Making Audio Fade in and Out**
 - H. Locking an Audio Clip to a Video Clip**
 - I. Extracting Audio from a Video Clip**
- IV. Adding Titles**
 - A. Superimposing a Title**
 - B. Editing an Existing Title**
- V. Creating Chapter Markers**
- VI. Sharing the Project**
 - A. Exporting to Tape**
 - B. Exporting to a QuickTime File**

Introduction to iMovie HD <http://www.apple.com/imovie>

The newest feature added to iMovie is the “Make a Magic iMovie” option. By choosing this feature you will automatically be able to save your create and start importing video into iMovie.

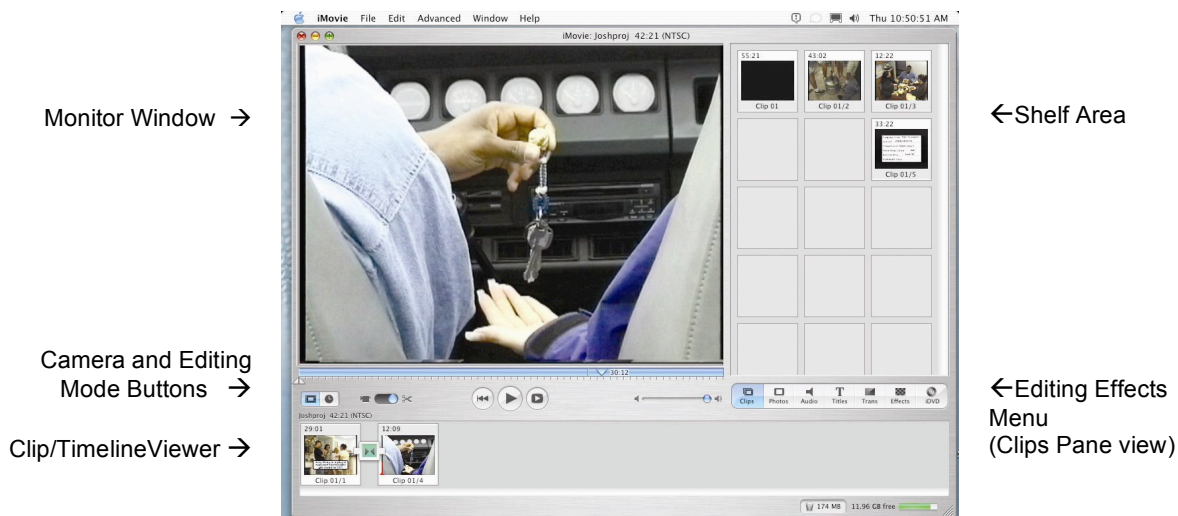


Once you have saved your project to the appropriate drive you have the option of placing transitions in your final DVD project. Each transition will be placed between breaks in the video that have been created by starting and stopping during taping. At this point, you are also given the option of choosing a soundtrack that will play during your movie. If the soundtrack is shorter than the length of your movie it will automatically loop itself to create constant sound.

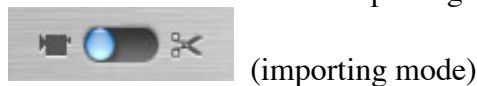


Making a Magic iMovie is ideal for those who have planned what their DVD will look like and shot accordingly. With this feature, you can ultimately put the tape in and walk away from it.

If you want to do have more control of your project, you may want to create a new project on the main menu screen. This option will allow you to have your hands in your whole project.



- The **Monitor** window allows the user to view the video content in an iMovie 4 project.
- The **Shelf Area** performs a variety of functions, explained in **Chapter II: Editing Video Clips**.
- The **Camera Mode** button switches between importing mode and editing mode.



- The **Editing Mode** button switches between the clip and timeline view.



- The **Clip/Timeline Viewer** displays the clips being actively used in the current project.

- The **Editing Effects Menu** has various buttons that control what is viewed in the Shelf. This is explained in further detail in **Chapter II: Editing Video Clips**.

I. Capturing and Importing Media

Before Importing - Import Preferences options

Clips will be automatically import to the **Clips Pane** by default. It is possible to import directly to the **Movie Timeline** by changing the import preferences.

1. Choose **iMovie > Preferences**.
2. Select **New clips go to: Movie Timeline** radio button to have clips imported directly to the Timeline (Clip Viewer).

Note: Monitor the free disk space during capture. Capture will automatically stop when 50 MB of free space remains. (1 minute of video footage = approximately 210 MB.)

A. Capturing Media

1. With a DV device (i.e. camcorder) connected to the computer, click the **Camera Mode** button so that it is set to importing mode.
2. Use the **Camera Mode** playback controls to preview a tape in the iMovie monitor. Use the control buttons to find the desired footage. Press the **Play** button when ready.
3. Press the **Import** button or the space bar on the keyboard to begin capturing video.
4. Press either the **Import** button or the space bar again to stop recording.



(Camera Mode Button)

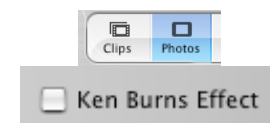


(Playback Controls)

B. Importing Still Images

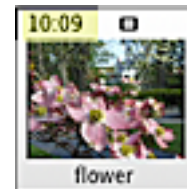
iMovie automatically applies pan and zoom (the Ken Burns Effect) to still images when importing. Therefore, pan and zoom needs to be disabled before importing a still clip.

1. Select the **Photos** pane from the Editing Effects Menu.
2. Deselect the Ken Burns Effect checkbox.
3. Choose **File > Import...**
4. Select the still clip to import.
5. Click the **Open** button to import the file, which will import into the Clips Pane

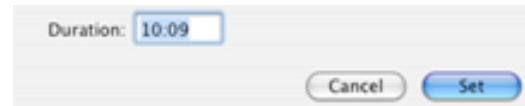


C. Changing Duration of imported still images

It is possible to change the duration of a still image clip.
The duration of a clip is shown in the **Time field**, in the upper left corner of the clip border (shown as minutes:seconds:frames).
The default duration of an imported still image clip is five seconds.



1. Double click on the still clip to edit the time.
2. Enter a new time in the **Duration:** field.
3. Click **Set**, to add new time, and close the window.



II. Editing Video Clips

Editing of the video clip can be done while clip is on the shelf, or in the clip viewer. To move between the different panes in the shelf, use the **Editing Effects Menu**, which can be found below the shelf area.

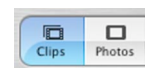


(Editing Effects Menu)

- **Clips** contains video clips and any imported still clips for the current project.
- **Photos** contains images that are in the iPhoto Library.
- **Audio** contains audio clips for the current project.
- **Titles** contains animated titles to be added to clips.
- **Trans** contains transitions to add between clips.
- **Effects** allows the user to add special effects to a clip.
- **iDVD** allows the user to add DVD chapters which can be read in iDVD.

A. Arranging Clips

1. To move a clip from the shelf to the time line, make sure the shelf is showing the current clips by clicking on the **Clips** button in the Editing Effects Menu.
2. Click on a clip and move it to the timeline.
3. To select and move multiple clips, hold down the **shift** key on the keyboard when selecting clips.



Note: It is not possible rearrange clips in the timeline viewer.

4. To change a clip's location, in clip view, click on the clip and drag it in front of or after another clip.

Note: It is not possible to place a clip before or after an existing transition.

B. Cropping Clips

Crop markers are for to shortening a clip to a desired length. Cropping saves the selected part of a clip and removes the frames before and after the crop markers.

1. Select the clip in the clips pane, or in the timeline viewer, in either view.
2. Move the cursor just below the scrubber bar to make the crop markers appear.



(Crop markers on the scrubber bar)

[inside crop markers]

3. Drag the left crop to the start of the clip and the right marker to the end. The final clip will be the yellow portion inside the crop markers.
Note: For more accuracy, click either marker and use the arrow keys to move the marker frame by frame.
4. Choose **Edit > Crop** to delete the frames outside of the crop markers.
*Note: The crop markers can also be used to remove a section from the middle, beginning, or end of a clip. Select the section to remove and then choose **Edit > Clear** (or press the **Delete** key) to remove selected frames from the clip.*

C. Splitting Clips

It is possible to split one clip into two separate clips.

1. Select the clip in the clips, clip viewer or timeline viewer
2. Drag the playhead in the scrubber bar to the frame where you want to split the clip.
3. Choose **Edit > Split Video Clip at Playhead**. A new clip immediately appears.
i.e. Clip 01/1

*Note: To undo an action: Choose **Edit > Undo**.*

D. Using Cut, Copy, and Paste

Move a video clip to another location, within iMovie, using the Cut, Copy, and Paste commands.

1. Select a clip in the clip viewer or timeline viewer.
2. Choose **Edit > Cut** or **Copy**.
3. Move the playhead to the desired location.
4. Choose **Edit > Paste** to place or copy the clip at that location.

E. Adding Video Effects

There are a variety of effects that can be added to a movie.

1. Click the Effects button.
2. Select the video to which you will be applying the effect.
3. Select a video effect in the **Effects** pane.
4. Adjust the effect using the different sliders in the Effects pane.

Note: Not every effect has multiple control sliders.

5. Click **Apply** to add the effect.

*Note: If you want the same effect applied to multiple clips throughout the project, simply hold the **shift** key down and select all the clips before choosing effect.*

*Note: A clip with an Effect can be restored back to its original state at anytime. Select the clip and Choose **Advanced>Restore Clip***

F. Changing a Clip's Direction and Speed

To make one or more clips play in reverse.

1. Select the clip or clips in the clip viewer or timeline viewer
2. Go to “Effects” > Scroll to “Fast/Slow/Reverse”
3. Check “Reverse direction”
4. Use the slider for faster or slower.

To make one or more video clips play slower or faster.

Note: Moving the speed slider to the left makes the clip go twice as fast for each mark, so it takes up half as much time in your movie. Moving it to the right makes the clip go half as fast for each mark, taking twice as much time in your movie.

G. Adding Scene Transitions

Transitions create a smooth entrance and exit in between clips. Transitions can be added to the beginning, or end of a movie, or between two video clips.

1. To add a transition, click the **Trans** button in the Editing Effects Menu.
2. Choose a transition from the transition palette.
3. Use the speed slider (In the Transitions pane) to modify the speed of the transition into or out of the clip.

Note: Slower transitions will take more time to render

4. Drag the transition from the pane to the desired location in the timeline, while in either view. A transition icon will appear between the two clips, and a red progress bar will appear under it. The transition is done rendering when the progress bar disappears.

H. Renaming Clips

Clips are saved as a numbered clip (i.e. Clip 01). However, you can rename clips inside of iMovie application, but do not rename clips inside of the iMovie project media folder.

1. To rename your clips while in clip viewer or shelf area, click on the clip name and type the new name.
2. To rename your clips while in the timeline viewer, double-click the clip and rename it in the Clip Info window.

III. Adding Audio

It is possible to add background music, voice narration, and sound effects as well as rearrange sequence, adjust the volume and duration of audio clips. There are two ways to add music. Either add a track from an audio CD, or an AIFF or MP3 audio file.

A. Adding Sound from an Audio CD

1. Insert an audio CD into your CD-ROM drive.
2. Click the **Audio** button of the **Editing Effects Menu**.
3. Move the playhead in the timeline viewer

to where you want the music track to begin.

4. Choose the CD from the pop-up menu.
5. Select a track in the Audio pane and either
 - a. drag the track from the Audio pane to the timeline viewer audio track 1 or 2
 - b. click the **Place at playhead** button on the Audio pane to start importing music.



← Audio Track 1
← Audio Track 2

B. Importing Audio Files

Audio can be imported in a QuickTime compatible format. Two of the most prominent are AIFF (Audio Interchange File Format) and MP3 (Motion Picture Experts Group-1 Layer 3).

1. Select where you want to insert audio by positioning the playhead in the timeline viewer.
2. Choose **File > Import**
3. Select the file and click the **Import** button. The clip will appear on audio track 2.
4. iMovie HD allows the user to see audio waves while in the timeline. This is a good feature for doing precise audio edits.

C. Adding Sound Effects

Sound effects are marked by a square. While they can be shortened, their duration cannot be increased beyond their default length.

1. Click the **Audio** button.
2. Click on the sound effect, and drag it from the list in the Audio pane to a desired location on audio track 1 or 2 in the timeline viewer.

***Note:** To reposition the sound effect, drag it to the new position.
To delete a sound effect, select it and press the **Delete** key.*

D. Adding Voice Narration

Record your own voice into your movie using a microphone with your computer.

1. Click the **Audio** button
2. Position the playhead where you want the narration to begin while in the timeline viewer.
3. Click the **Record Voice** button in the Audio Pane.
4. Begin speaking. Click **Stop** when you are finished recording.

***Note:** Use the volume level meter to determine how loudly you speak into the microphone.*

E. Cropping Audio Clips

Cropping audio is the same process as cropping video.

1. Select an audio clip in the audio track 1 or 2 in the timeline viewer.

2. Drag the triangle crop markers to the desired beginning and end of the audio clip.
3. Choose **Edit >Crop** from the menu.
Note: Sound effects cannot be cropped.

F. Splitting Audio Clips

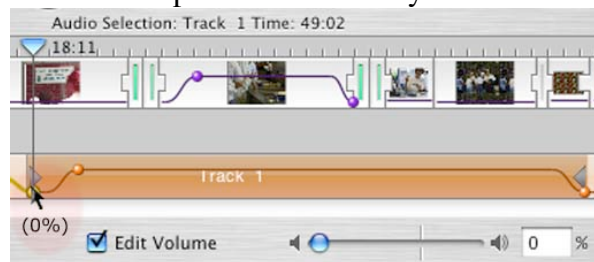
1. Select an audio clip in the timeline. (Make sure you have not selected an attached video clip, too.)
2. Move the playhead to where you want to split the clip.
3. Choose **Edit > Split Selected Audio Clip at Playhead**.
*Note: If you have selected a video and audio clip accidentally, you will see **Split Selected Video Clip at Playhead**. To remedy, make sure you have only an audio clip selected.*

G. Making Audio Fade In and Out

You can make sound fade in and out for an individual audio or video clip.

1. Select the “Edit Volume” checkbox in the timeline viewer. A volume level bar appears in each clip.
2. Click a point on the volume level bar at the beginning or end of the clip.
3. Move the marker that appears up or down, depending on whether you want the sound to be louder or softer at that point.
4. To remove a marker, select it and then press the delete key.

Audio Track 1 marker at 0% →



H. Locking an Audio Clip to a Video Clip

Audio may need to be locked to a specific video clip if you edit video after placing audio.

1. Select the audio clip.
2. Move the playhead to the video that the audio is to be locked to.
3. Choose **Advanced > Lock Audio Clip at Playhead**.
*Note: if you need to unlock the clips, **Advanced > Unlock Audio Clip**.*

I. Extracting Audio From a Video Clip

It is possible to extract the audio from a video clip, to reuse elsewhere in the movie.

1. In the timeline viewer, select the video clip.
2. Choose **Advanced > Extract Audio**. The extracted audio will appear in audio track 1.
Note: Extracting audio actually copies the audio from the video clip. iMovie turns the volume off when you extract the audio clip. The audio in the original video clip will no longer be heard.

IV. Adding titles

A. Superimposing a Title

Titles can be superimposed over portions of clips or added over black as a separate clip.

1. Click the clip in the clip viewer or the timeline viewer.
2. Click the **Titles** button.
3. Select a title style from the list in the **Titles** pane.
4. Type the text for your title into the text field or fields at the bottom of the **Titles** pane.
5. If you want the title over a clip be sure the box labeled **Over Black** is left unchecked.
6. If you want the title to be over black, select the **Over Black** checkbox.
7. Click the **Color** picker and choose a color for the text.
8. Select a font for your title from the font pop-up menu.
9. Adjust the size of the font with the scroll bar.
10. Adjust the **Speed** and/or **Pause sliders** to speed up or slow down the effect.
11. Change the direction of title scroll for the styling effect (i.e. rolling credits)
12. Drag the title from the **Titles** pane to the viewer. Place the title before the clip you want it to appear over.

Note: Titles must be placed before or after clips.

B. Editing an Existing Title

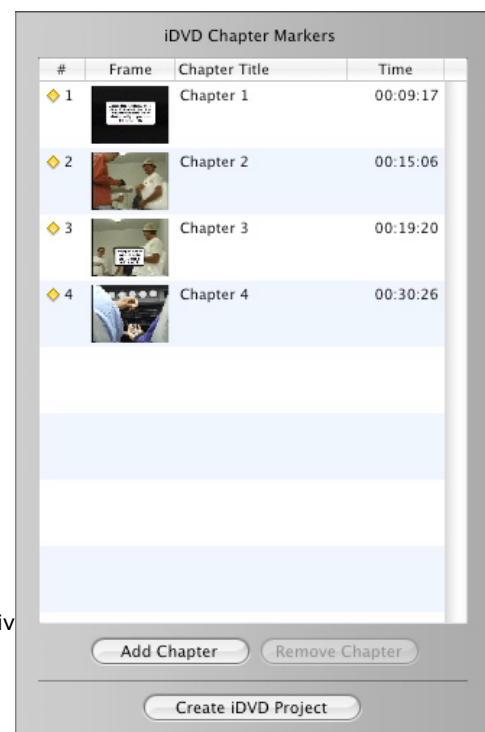
1. Select the title clip in the clip viewer.
2. Click the **Titles** button.
3. Make the modifications.
4. Click the **Update** button in the **Titles** pane.

v. Creating Chapter Markers

On most professionally made DVDs, a viewer can select **chapters** from the DVD menu, which are locations at which the viewer can start playing the film. Likewise, in iMovie 4, the user can set chapter locations for the current project. These chapters, with the project, can be exported to iDVD 4 using the **Create iDVD Project** button, and the chapters will then be available on the DVD disc menu.

Follow these directions to add chapter markers.

1. Select a clip in the timeline viewer and move the playhead to the frame in which to start a new chapter.



2. Click the **iDVD** button to open up the iDVD pane.
3. Click **Add Chapter**. (Maximum is 36)
4. The new chapter will appear in the first row of the iDVD Chapters Marker pane, along with the timecode and still image of the first frame.
5. Double click on the chapter title, and type in a new name for the chapter.
Note: Chapter markers appear in the timeline viewer as diamonds.
6. Select File > Save Project when completed.
7. After the chapter markers are all created, click the **Create iDVD Project** button. iDVD 4 will open and you can use it to create a DVD of your project.

VI. Sharing the Project

Once you have your movie created in iMovie, you can export the final movie to a DV camcorder, VHS tape or QuickTime file.

A. Exporting to Tape

(First step is for recording to the SVHS deck in a student-computing lab.)

1. Select **DV In** on the external Sony switcher box. (If recording to DV camcorder, connect your DV device directly to your computer with a FireWire cable.)
2. Put in the tape you want to which you want to record.
3. Choose **File > Share**
4. Choose **Videocamera** from the dialog box.
5. Click the **Share** button.

Note: Be aware that exporting overwrites the current tape in the video camera or VCR.

B. Exporting to a QuickTime File

1. Choose **File > Share**.
2. Choose **QuickTime** from the dialog box.
3. Select a movie format from the **Compress movie for:** dialog box.
4. Click **Share**.
5. Name the movie and choose a destination for the file.
6. Click **Save**.

QuickTime Movie Formats

- **Email** creates a small movie file optimized for sending over e-mail. Person viewing must have Quick Time 4.0 or later.
- **Web** creates a movie optimized for playback over the Internet. Person viewing must have Quick Time 4.0 or later.

- **Web Streaming** prepares the movie for posting on a QuickTime compatible streaming Web server.
- **CD-ROM** creates a movie optimized for playback from slower CD-ROM drives.
- **Full Quality DV** creates a high-quality movie, preserving the most data possible. Use for creating movies to import into other applications for further editing.
- **Expert Settings** uses custom Quick Time settings based on user input.