

## Importing Family Tree Maker Into RootsMagic 7

The ability to directly import all versions of FTM up to 2014 is now available in RootsMagic 7. This means that you do not need to create a GEDCOM file.

### This Magic Guide covers:

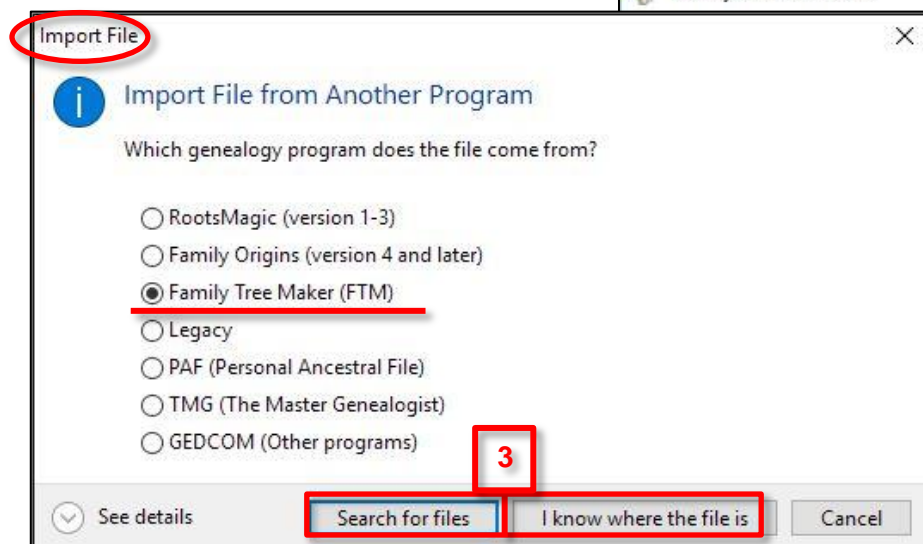
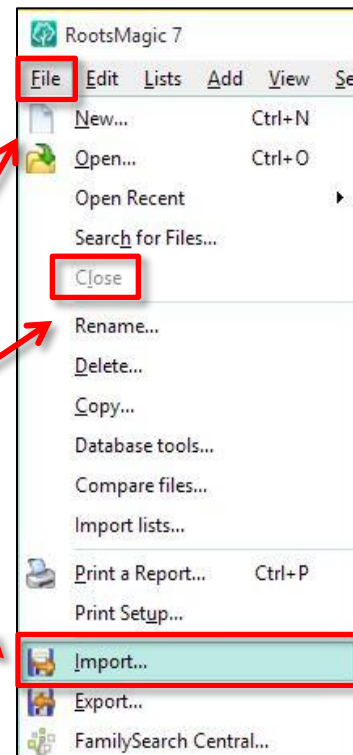
- A. Importing Directly into RootsMagic 7
- B. Media

#### A. Importing Directly into RootsMagic 7

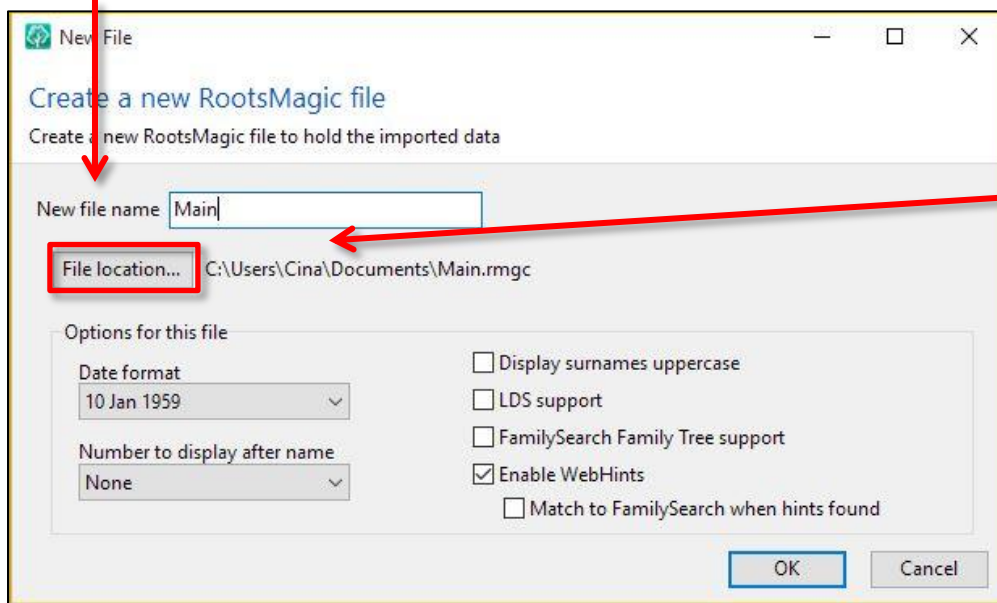
1. Open RootsMagic. If a file is open, go to the File menu and select Close. Once the screen is blank, go to the File menu and select Import.

2. On the Import File window, select Family Tree Maker (FTM)

3. Click “Search for files” if you do not know where the file is stored. If you know where your file is, click “I know where the file is.”



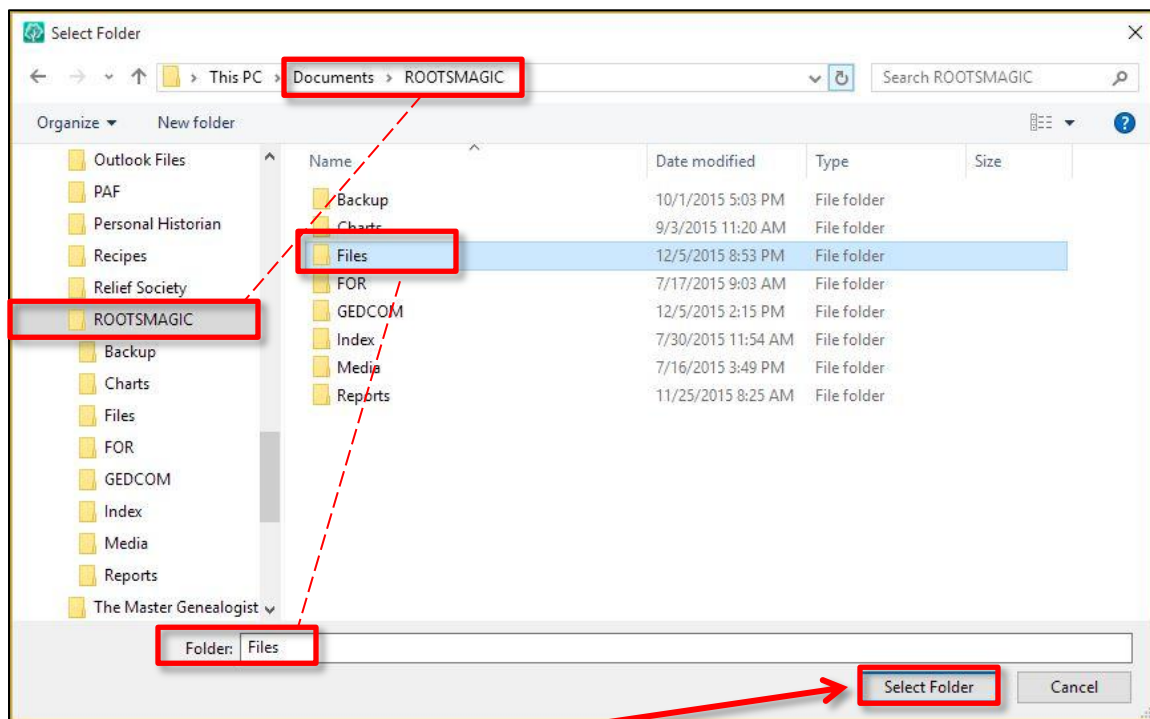
4. Name your file.



5. Verify that the file location is correct. If not, click the “File location” button to save somewhere else.

6. Choose where you want the file to be saved. This example shows that the file will be saved to

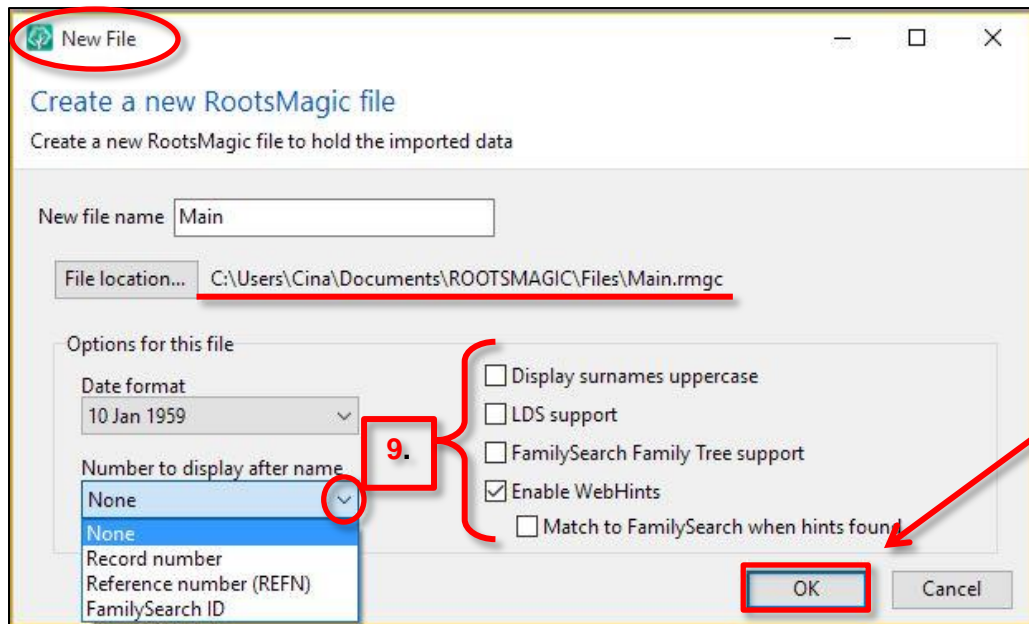
Documents>ROOTSMAGIC>Files.



7. Click the “Select Folder” button to save the selection and return to the New File window.

8. The File location reflects the desired placement for the file.

9. Select the file options you want applied to this file.



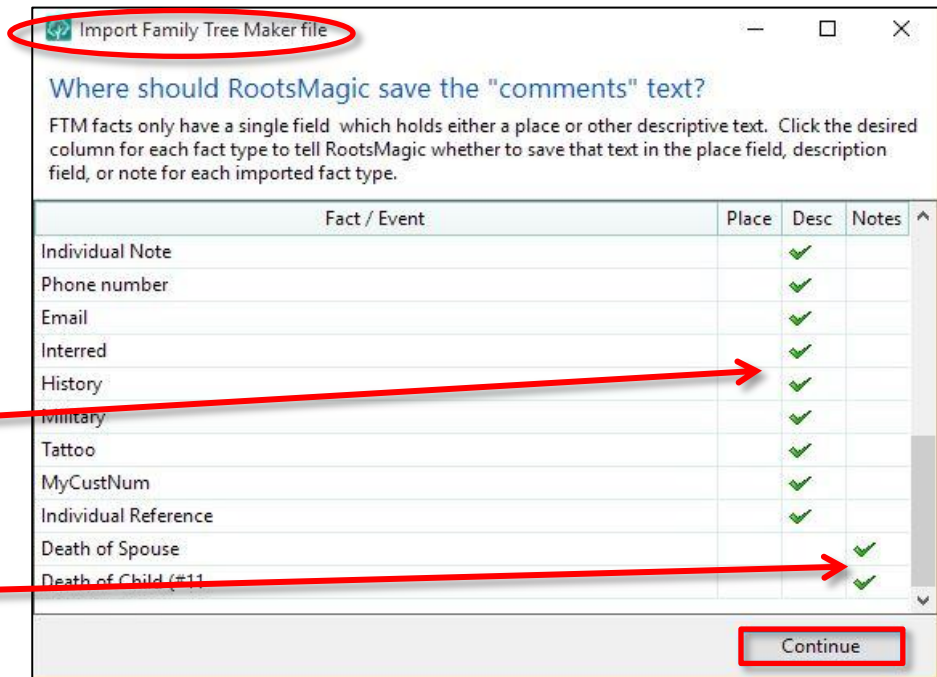
10. Click OK to import the file.

**FTM 2008-2014 Users, proceed to Step 13.**

**FTM 2006 and earlier continue with steps 11 and 12.**

11. If you created custom events (facts) in your Family Tree Maker 2006 and earlier database, RootsMagic will need to know where to put that data. The

“Import Family Tree Maker file” window will open. By default, the custom fact’s data will be placed in the “Desc” (Description) field. You can change the placement to the “Place” or “Note” field, by clicking in the correct column.



12. Click “Continue” to finalize your import.

13. Your imported file will open.

The screenshot shows the RootsMagic 7 software interface. At the top, the title bar reads "RootsMagic 7 - [C:\Users\Cina\Documents\ROOTSMAGIC\Files\Main.rmgc]". Below the title bar is a menu bar with options: File, Edit, Lists, Add, View, Search, Reports, Tools, Internet, Window, Help. A toolbar with various icons is located below the menu bar.

The main window displays a pedigree chart for "James SMITH-1". The chart shows a family tree with several individuals and their dates. The individuals shown in the chart are:

- Duke SMITH-167
- Howard SMITH-250 (9 Jun 1861-6 Apr 1936)
- Myrna DOE-168
- Howie SMITH-248 (27 Mar 1886-9 Feb 1938)
- Lehi DAVIS-206 (28 Oct 1832-18 Mar 1899)
- Phebe Sophia DAVIS-214 (22 Dec 1861-1 Mar 1891)
- Eliza BARNUM-211 (15 Oct 1837-11 Feb 1911)
- James SMITH-1 (1906-8 Sep 1985)

On the left side, there is an "Index" table with columns "Name" and "Born". The table lists the following individuals:

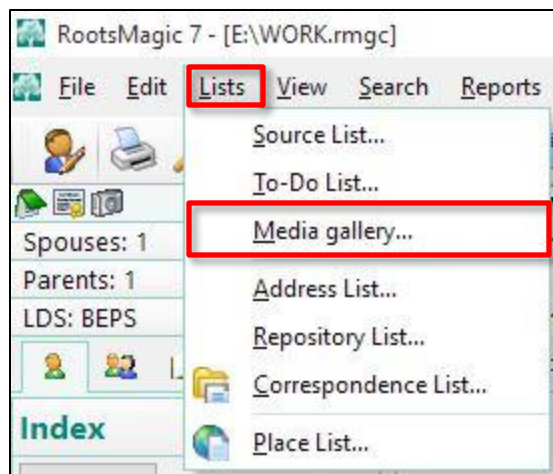
Name	Born
NORMAN, Edvart Jentoft ...	1865
OBRAY (AUBRAY, AUBREY, ...	
OBREY, Thomas Kay	
ODCROFT, Dorthea	1647
OLDHAM, James Henry	1848
POND, Elmira	1811
POND, Thaddeus	1770
QUIGLEY, Andrew	1831
ROBERTS, Deborah Lyn	
ROBINSON, Oliver Lee	1833
SANFORD, Margaret Elmira...	1839
SHAW, Elizabeth	
SMITH, Burton Sylvester	1890
SMITH, Charles	1883
SMITH, Charles Daniel	1866

## B. Media

In order for your media links to work in RootsMagic, the media must be on your computer and not online. If any of your media links start with [trees.ancestry.com](http://trees.ancestry.com) or end with `.htm` or `.html`, those media items are on the internet and not your computer. They have to be downloaded to your computer if you want to see them from within RootsMagic. If you have FTM 2012 or 2014, resync your FTM file to the online tree to download the media to your computer, then re-import your FTM file into RootsMagic.

RootsMagic links media from wherever you have it stored on your computer. This allows you to organize your media files any way you like. RootsMagic does not create a special media folder or copy media from one place to another.

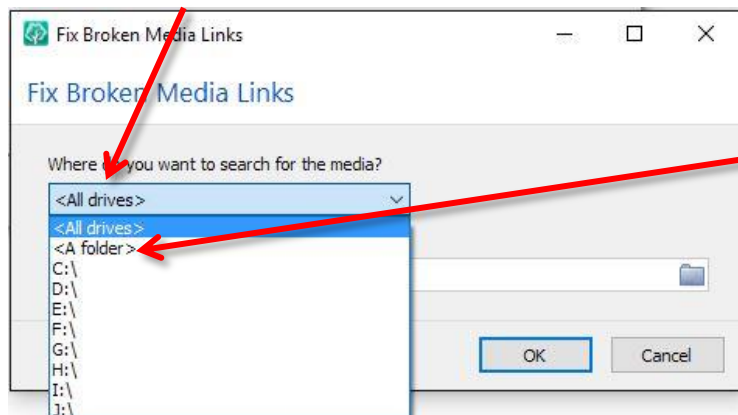
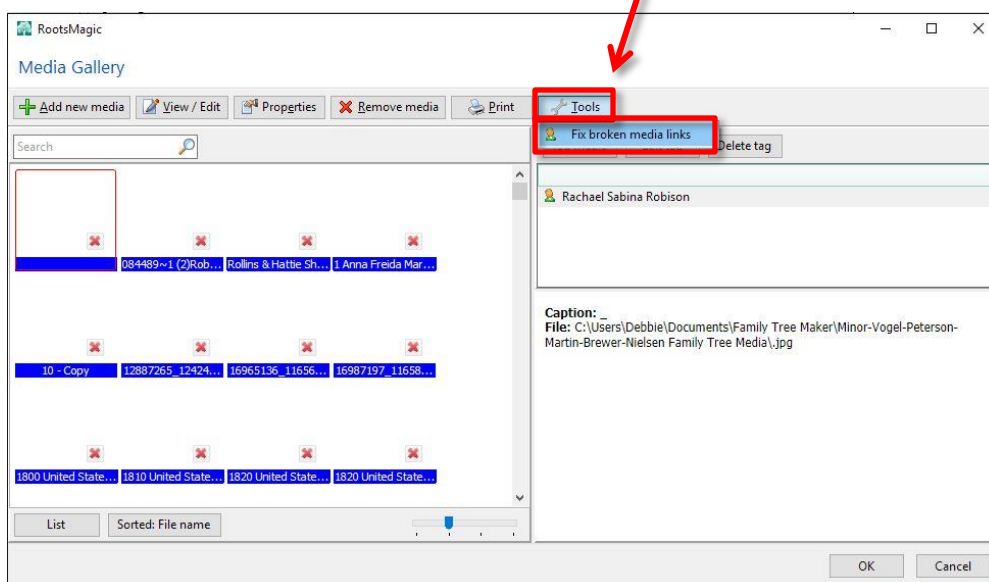
If you have media in a Family Tree Maker folder, you can keep it there OR move the folder to someplace else. You can even rename the file if desired. This process will break the current media links, therefore to fix them, do the following:



1. Go to the Lists menu in RootsMagic and select Media Gallery.

2. If you see boxes with red Xs, click the Tools button and choose "Fix broken media links".

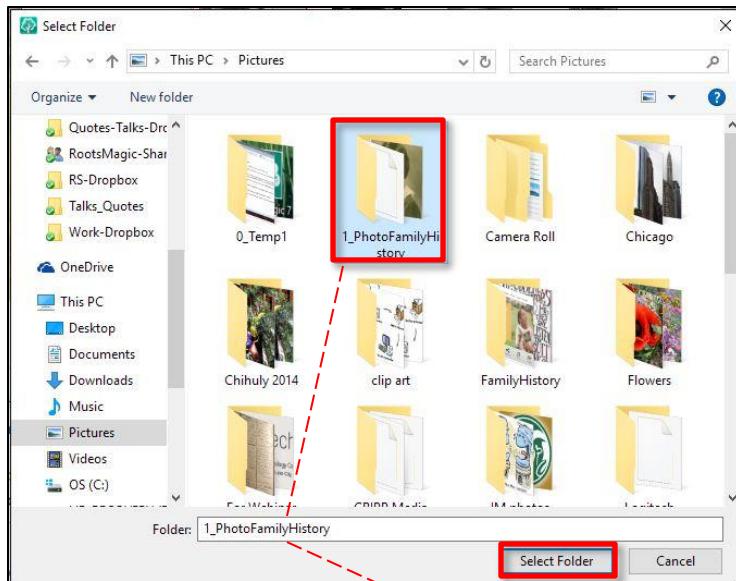
3. A new window will open. The default is to look for the media on <All drives>. If you don't know where the media is stored, or if it is stored in different areas on your computer, keep the default option of <All drives>.



4. If you wish to focus your search to a specific folder or sub-folders, change the option from <All drives> to <A folder>.



5. Another window will open so that you can maneuver to the correct folder.

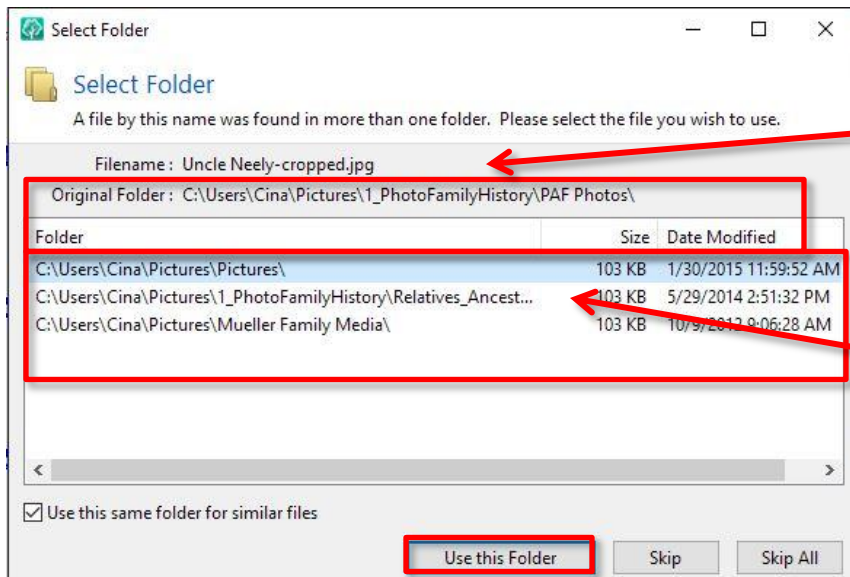
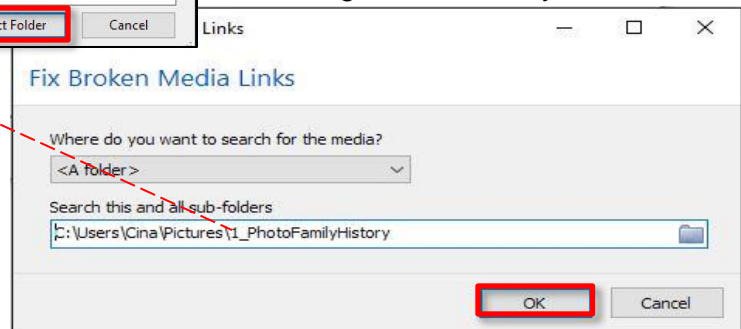


6. Select/highlight the folder and click the "Select folder" button.

7. Click OK to start the search.

8. RootsMagic will look for your media. If only one version of the file is found, it will be linked to RootsMagic automatically.

9. If more than one version of your file is found, you will be given the opportunity to choose which folder you want to link to.



10. The name of the file appears, followed by the path that was originally used to link to the image. Below that are folders where the image is currently located. Select the folder you want to link to.

11. Click "Use this Folder".