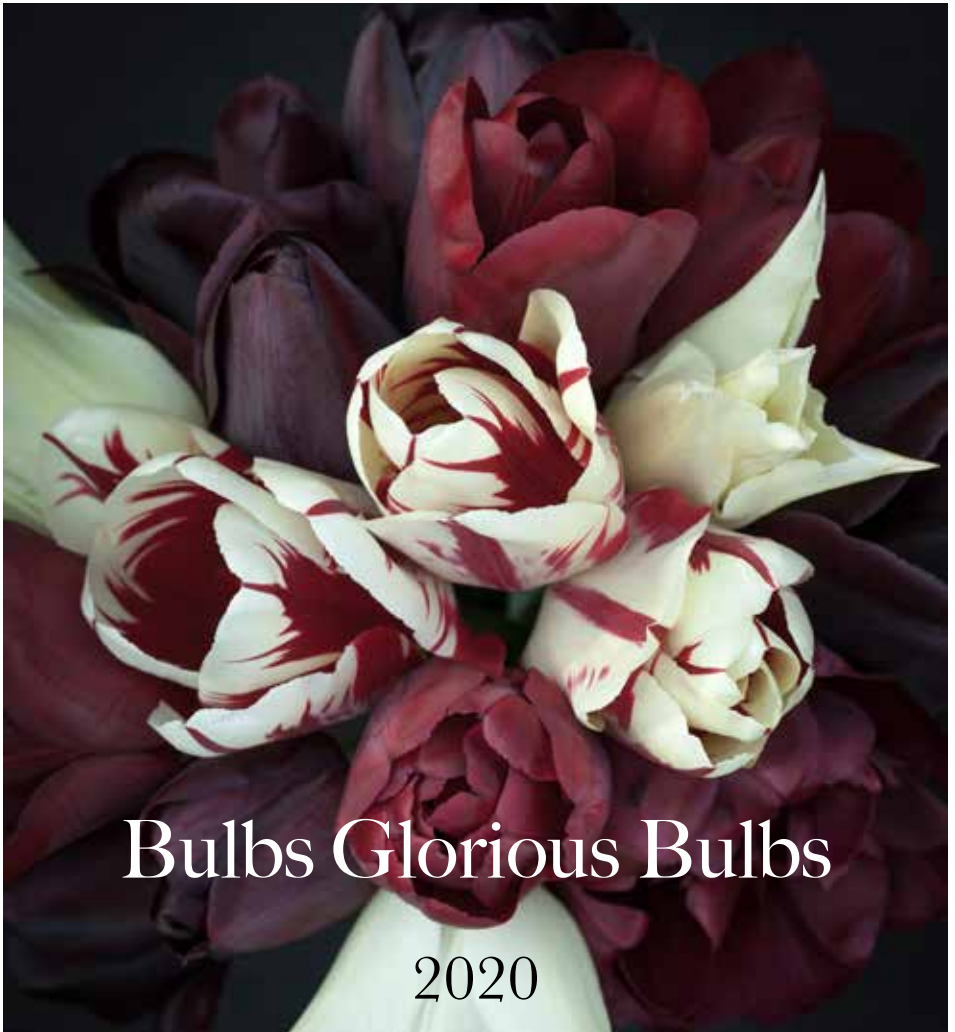




linnels farm

in association with

FLARE & flame



Bulbs Glorious Bulbs

2020

Contents

Alliums	4
Scented Narcissi	8
Gift Collections	12
Tulip varieties	20
Early	21
Mid Season	22
Late	27
Show Stoppers	28
Hyacinths	30
Little Beauties	32
Ornithogalum nutans	36
Erythronium	37
Muscari & Bellevalia	38
Camassia	40
Fritillaria	42

Our cover combination - the 'Dark & Elegant' Collection (see page 13).

Welcome to our 2020 Bulb Catalogue.

It is with joy and excitement that we introduce our 2020 Bulb Catalogue – never has there been a year when spring bulbs, especially our tulips, earned their keep 'during lockdown'. Weeks of glorious displays and heartfelt emails from many of you saying that these beauties were keeping spirits up in such trying times.

Unlike many bulb companies we trial our bulbs both in the south and the north of the UK so consider ourselves well placed to advise on bulb choices, whichever area of the country you call home. The majority of the bulbs we import are top sizes where possible and most importantly we don't sell any bulbs that we wouldn't happily give space to in our own gardens!

Our flowering times are a guide – in warmer springs most tulips will flower earlier and flowering times will overlap.

New additions & Reintroductions for 2020

Scented Narcissi: we've added '**White Lion**' (p.11) and '**Campernelle Double**' (p.11) amongst others, to our growing stable of scented narcissi. These are 'bang for your buck' bulbs that naturalise - once the hard work of planting has been done the display gets better and better each year.

Tulips: We've reintroduced '**La Belle Époque**' (p.29) - her absence has been felt but it was only when we liaised with an additional bulb grower that we felt we could get the quality we wanted, '**Cummins**' (p.29) talk about frilly knickers!, '**James Last**' (p.27) - a divine washed out blend of smoky purple and pink that's superb in late afternoon sunshine. And many more...

Bellevalia 'Green Pearl' (p.39) - an intriguing Muscari relative.

Fritillaria pallidiflora (p.43) - a looker but not a shouter.

What were our favourite bulbs last year?

Sabina: "**Allium 'Globemaster'**- stately and really long flowering (p.7) & the **NEW Rembrandt collection** - fabulous, vibrant colours!" (p.17).

Karen: "Tulip '**Jaap Groot**' (p.21) was a mix of clotted cream and butter and simply got better with age; it was the most shared photo by people who bought it last year. And the lemon scent of '**Verona**' on those hot spring days was positively refreshing." (p.34).

Alliums

Alliums are a great investment,
reliably flowering each year and
are a magnet for bees

Allium schubertii

amazing - like sliver-purple fireworks

40 cm
May - June

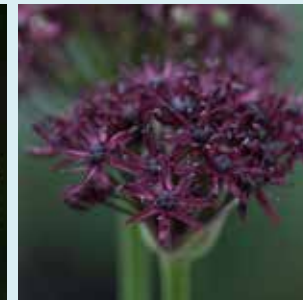
5 bulbs @ £10



**Allium
'Mount Everest'**
pure white

90 cm
May - June

5 @ £10
10 @ £17



**Allium
atropurpureum**
deepest purple
hemispheres

60 cm
June

10 @ £4
30 @ £10



**Allium
'Nigrum'**
naturalise in grass for a
wildflower look

60 cm
May - June

10 @ £5
30 @ £13

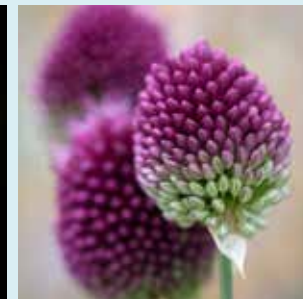


**Nectaroscordum
siculum ssp.
bulgaricum**

bees adore these

120 cm
May - June

10 @ £6
30 @ £15



**Allium
sphaerocephalon**
claret drumsticks
perfect dotted through
borders

50 - 90 cm
June - July

40 @ £4
100 @ £8



Allium cristophii
large head of
star-shaped
lilac flowers

60 cm
June

10 @ £6
30 @ £15



**Allium
'Summer
Drummer'**

200 cm
July - August
5 @ £6
10 @ £11



**Allium
'Gladiator'**
silvery mauve

120 cm
June - July
5 @ £10
10 @ £17



**Allium
'Purple Sensation'**
classic purple

90 cm
May - June
10 @ £5
30 @ £13

Allium amplexans 'Graceful Beauty'

Aptly named - a lovely small flower, pure white with lilac stamens, June flowering and works well as a cut flower.

30 cm
May - June
10 bulbs @ £6
30 bulbs @ £15

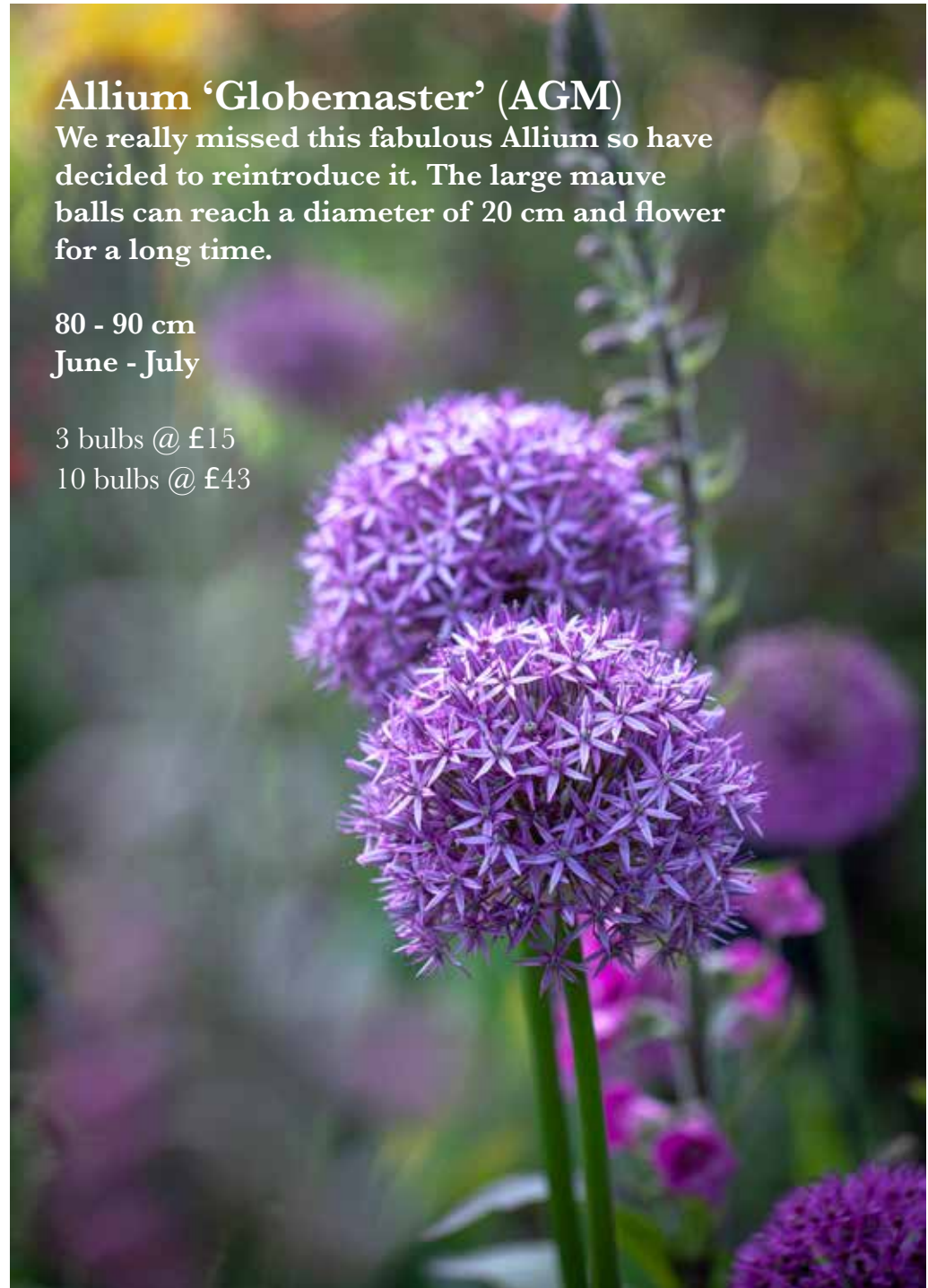


Allium 'Globemaster' (AGM)

We really missed this fabulous Allium so have decided to reintroduce it. The large mauve balls can reach a diameter of 20 cm and flower for a long time.

80 - 90 cm
June - July

3 bulbs @ £15
10 bulbs @ £43



Scented Narcissi

Our carefully chosen selection of scented narcissi are as perfect in the vase as they are in the garden.

Bulbs will naturalise (divide and spread if left undisturbed in the garden) into larger drifts each year.

All varieties on pages 10 and 11 can be planted through grass – just bear in mind that the leaves will need to remain for 6 weeks after flowering. With careful selection you can have a display of scented narcissi from March to late May.

The daintier varieties on this page are perfect in the garden or in containers where their divine scent can be appreciated.



'Sweet Love'
unique apricot
colouring

40 cm
April - May

10 @ £7
25 @ £15



'Silver Chimes'
up to 10
flowers per stem

35 cm
April - May

10 @ £7
25 @ £15



'Erlicheer'
creamy white
double flowers

30 cm
March - April

10 @ £7
25 @ £15





'Acropolis'

big double blooms
spicy scent

Late April
40 cm



'Sir Winston Churchill'

loose clusters with a
spicy scent

Mid April
40 cm



'Bell Song'

glorious pale tangerine
trumpet

April
35 cm



'White Lion'

NEW
double, soft yellow cen-
tre and long lasting.

April
35 cm



'Actaea'

NEW
Pheasant's Eye
dating from pre 1919

Late May
35 cm



'Campernelle'

NEW
double, scented & over
400 yrs old

April - May
30 cm



'Bridal Crown'

sweetly scented
double daffodil

April
35 cm



'Thalia'

orchid daffodil
very elegant

April - May
30 cm



'Laurens Koster'

NEW
up to 7 small
flowers per stem

April - May
35 cm

10 Bulbs £6

25 Bulbs £12

50 Bulbs £22



Narcissus 'Actaea' naturalised

FLARE & flame

Gift Collections

This year we offer 12 collections...

All of our bulb collections are beautifully presented in gift bags, complete with planting instructions & gift label.

25 bulbs in each collection - £18

(unless stated otherwise)



Scented Spring Collection

This collection combines the lovely scent of Narcissi with the big blousy blooms of double Tulips

... oh and a sprinkling of delicate blue Muscari



45 bulbs £19

10 Tulips, 10 scented Narcissi & 25 Muscari

La Belle

NEW - A subtle blend of mauve and dusky coffee coloured tulips, accented with sumptuous black for drama. The colours mellow and fade with time giving a lovely antique feel.



25 bulbs £19

All the Blues

NEW - a harmonious blend of blues and whites. Double, fringed and flamed this combination flowers over a long period.



Rembrandt



NEW
a combination of dark, rich, sumptuous colours
with added drama from the yellow red flamed
Rembrandt tulip.

NEW



Avriel



Avriel



Persiana



Persiana



Pure Elegance



Pure Elegance



Spring Meadow

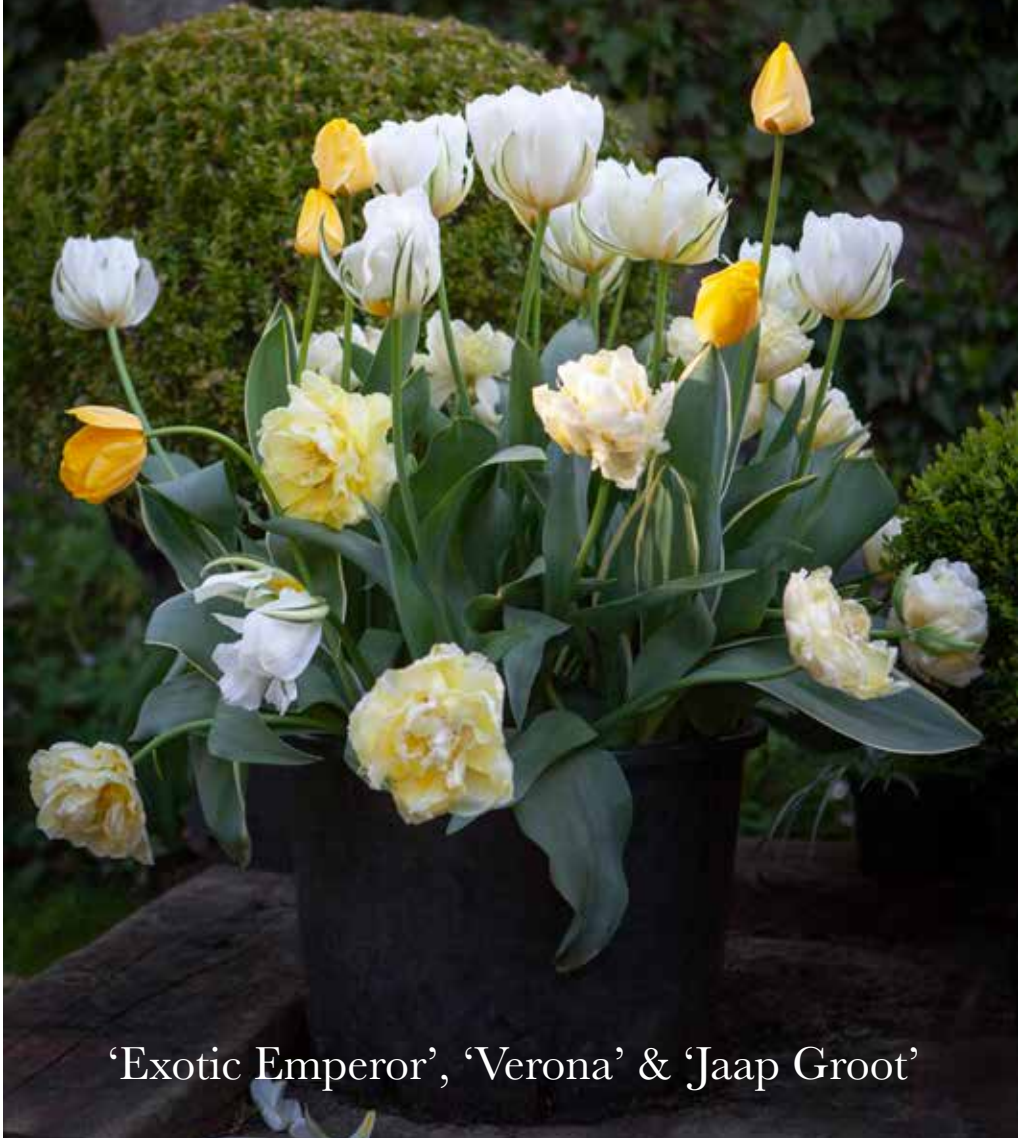


Spring Meadow

Individual Varieties

Early Tulips

flowering late March – mid April



'Exotic Emperor', 'Verona' & 'Jaap Groot'

Early Tulips



'Exotic Emperor'
long-lasting

45 cm



'Verona'
citrus scented

40 cm



'Jaap Groot'
cream flame
variegated leaves

50 cm



'Apricot Beauty'
softest apricot
long-lasting

40 cm



'Candy Prince'
unusual lilac colour

40 cm



'Purisima'
tall with large flowers
reliably perennial

50 cm



'Havran'
crushed blackcurrants

45 cm



'Helmar'
like a Dutch painting

45 cm



'Jan Reus'
subtle yellow base

50 cm

10 Bulbs £5

25 Bulbs £12.50

50 Bulbs £22

Early-Mid Season Tulips

		
<p>'Antraciet' combines well with other tulips 45 cm</p>	<p>'Prinses Irene' long lasting 30 - 40 cm</p>	<p>'Negrita' mixes well with other colours 50 cm</p>
		
<p>'Flaming Flag' purple ripples 45 cm</p>	<p>'Blue Diamond' very long lasting relaxed habit 45 cm</p>	<p>'Très Chic' beautiful shape 45 cm</p>
		
<p>'Continental' NEW dark and sumptuous 45 - 50 cm</p>	<p>'Annie Schilder' NEW mellows to bronze hues 40 - 45 cm</p>	<p>'Gorilla' beautifully fringed (terrible name) 45 - 50 cm</p>



'Prinses Irene' & 'Negrita'

Mid-Season Tulips: flowering April-May



'Mistress'
NEW - clear luminous
 pink, long lasting
 50 cm



'Barcelona'
NEW - eye-catching
 brilliant, lipstick pink
 60 cm



'Angelique'
 a classic
 fragrant
 45 cm



'Doll's Minuet'
 elegant
 55 cm



'Mount Tacoma'
 great cut flower
 45 cm



'Fancy Frills'
NEW - delicately
 fringed
 45 cm



'Charming Lady'
NEW
 shades of palest apricot
 45 cm



'Ronaldo'
 blue sheen
 45 cm



'Ballerina'
 another classic
 55 cm



Tulipa 'Grand Perfection'
 the creamy background fades to white for an
 even more dramatic look

45 cm
 10 Bulbs £5
 25 Bulbs £12.50
 50 Bulbs £22

Tulipa 'Hakuun'

(formerly 'White Cloud')

Japanese bred, this is a very tall, sturdy tulip which just kept on flowering. Often described as pure white, we found it has a beautiful ivory flame with grey margins to begin with.

A Stunner !

April - May

60 cm

10 Bulbs £5

25 Bulbs £12.50

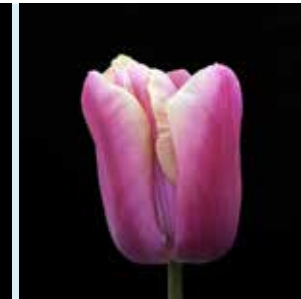
50 Bulbs £22

Late Tulips - May flowering



'Menton'

long lasting
fades as ages
55 cm



'Holland Beauty'

NEW
rim fades to white
55 cm



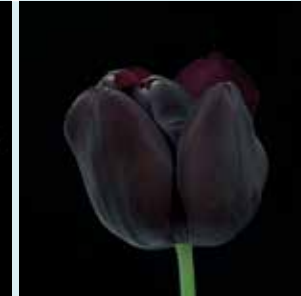
'Brown Sugar'

NEW
strong and tall
60 cm



'Black Parrot'

ruffled feathers
55 cm



'Queen of Night'

best ever
60 cm



'James Last'

NEW
soft & dusky
50 cm



'Spring Green'

ivory and green
viridiflora
50 cm



'Bleu Aimable'

NEW
fading to antique grey
50 cm



'Greenstar'

reflexed petals
50 cm

10 Bulbs £5

25 Bulbs £12.50

50 Bulbs £22

Showstoppers 10 Bulbs



'White Parrot'

NEW

Mid-season

35-40 cm

£7

(bulb size 12+)



'Amazing Parrot'

NEW

Mid-season

40-50 cm

£6

(bulb size 11/12)



'Copper Image'

Late flowering

45 cm

£8

(bulb size 12+)



'Danceline'

Mid-season

40-50 cm

£8

(bulb size 11/12)

Showstoppers 10 Bulbs



'Flaming Spring Green'

Mid-season

45-50 cm

£9

(bulb size 12+)



'La Belle Époque'

NEW

Early flowering

30-40 cm

£10

(bulb size 12+)



'Cummins'

NEW

Late flowering

50 cm

£6

(bulb size 10/11)



'Green Wave'

Late flowering

50-60 cm

£7

(bulb size 12+)

Hyacinths

Hyacinths are the perfect start to Spring, flowering early, undemanding and with a beautiful fragrance. This year, we chose these two divine double varieties with each individual floret an exquisite rosette.

N.B. – we prefer to buy our bulbs unforced and they will flower in the garden in March.

But if you want them to flower earlier:

- * Place in your fridge for 10 weeks, tricking them into 'an earlier winter'.
- * Plant them in pots, or just above water in hyacinth forcing vases.
- * Leave in a cool, dark cupboard until roots have fully formed then move into warmth to flower.



NEW 'Snow Crystal' 5 bulbs - £5



NEW 'Royal Navy' 5 bulbs - £5



Little Beauties

Planting these diminutive bulbs will repay you for years to come since they naturalise in the garden (divide and spread slowly to form drifts). They are equally at home as the top layer of spring pots providing welcome early flowers.



Scilla mischtschenkoa



Scilla mischtschenkoa
very pretty & early flowering

15 cm
Jan - March

10 @ £4
25 @ £9
50 @ £15



Chionodoxa forbesii
'Rosea'

15 cm
March - April

10 @ £4
25 @ £9
50 @ £15



Ipheion uniflorum
fragrant star flower
Great in pots

15 cm
Jan - Mar

10 @ £2
25 @ £4
100 @ £8



Fritillaria meleagris
Naturalises in grass
top size bulbs - 8/9

30 cm
April

10 @ £3
25 @ £6
100 @ £18



Narcissus 'Tête Bouclé'
NEW

bright yellow miniature double

15 cm
March - April

10 @ £6
25 @ £12



Pseudonarcissus lobularis

Wordsworth's daffodil

30 cm
March - April

10 @ £4
25 @ £8



Iris reticulata 'Alida'

perfect in pots

15 cm
Feb - March

10 @ £2.50
25 @ £5



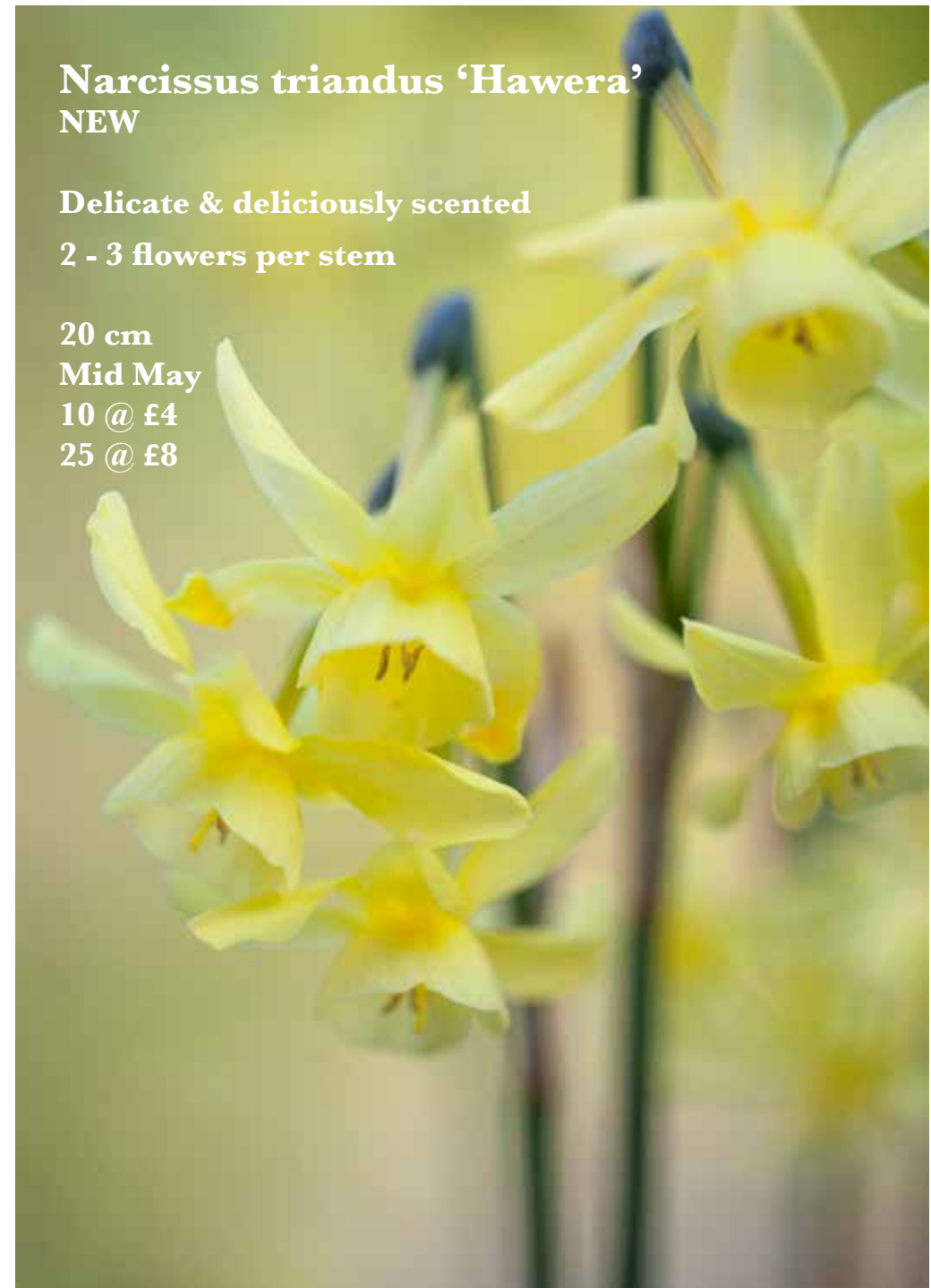
Anemone blanda

'Blue Shades'

naturalises in dappled shade

10-15 cm
March - April

10 @ £2
25 @ £4
100 @ £12



Narcissus triandus 'Hawera'
NEW

Delicate & deliciously scented

2 - 3 flowers per stem

20 cm
Mid May
10 @ £4
25 @ £8

Ornithogalum nutans

Head-turning, ghost-like flowers.
Creates a beautiful carpet around the base of trees
and makes an unusual cut flower.

10 @ £3
25 @ £6

Erythronium 'White Beauty'

This beauty is perfect for bringing
brightness to shady corners of the
garden, white flowers with elegant
reflexed petals appear in March/
April above the decorative leaves

5 tubers £9 15 tubers £25

Muscari & Bellevalia



Muscari armeniacum & 'Baby's Breath'
with Bellevalia 'Green Pearl'



**Muscari
'Baby's Breath'**

fragrant
15 cm
March-April
10 @ £2
25 @ £4



**Muscari
armeniicum**

azure blue
15 cm
March-April
25 @ £2.50
50 @ £4



NEW - Bellevalia paradoxa 'Green Pearl'

eye-catching colour
25 - 30 cm
April
10 @ £5
25 @ £10



Camassia one of the few bulbs that tolerates damp soil. A great naturaliser, performs brilliantly in pots, with an added bonus - a long lasting cut flower!



Camassia quamash

20 cm
May - June
50 @ £6



Camassia caerulea (leich. Blue)

70 cm
May - June
5 @ £6



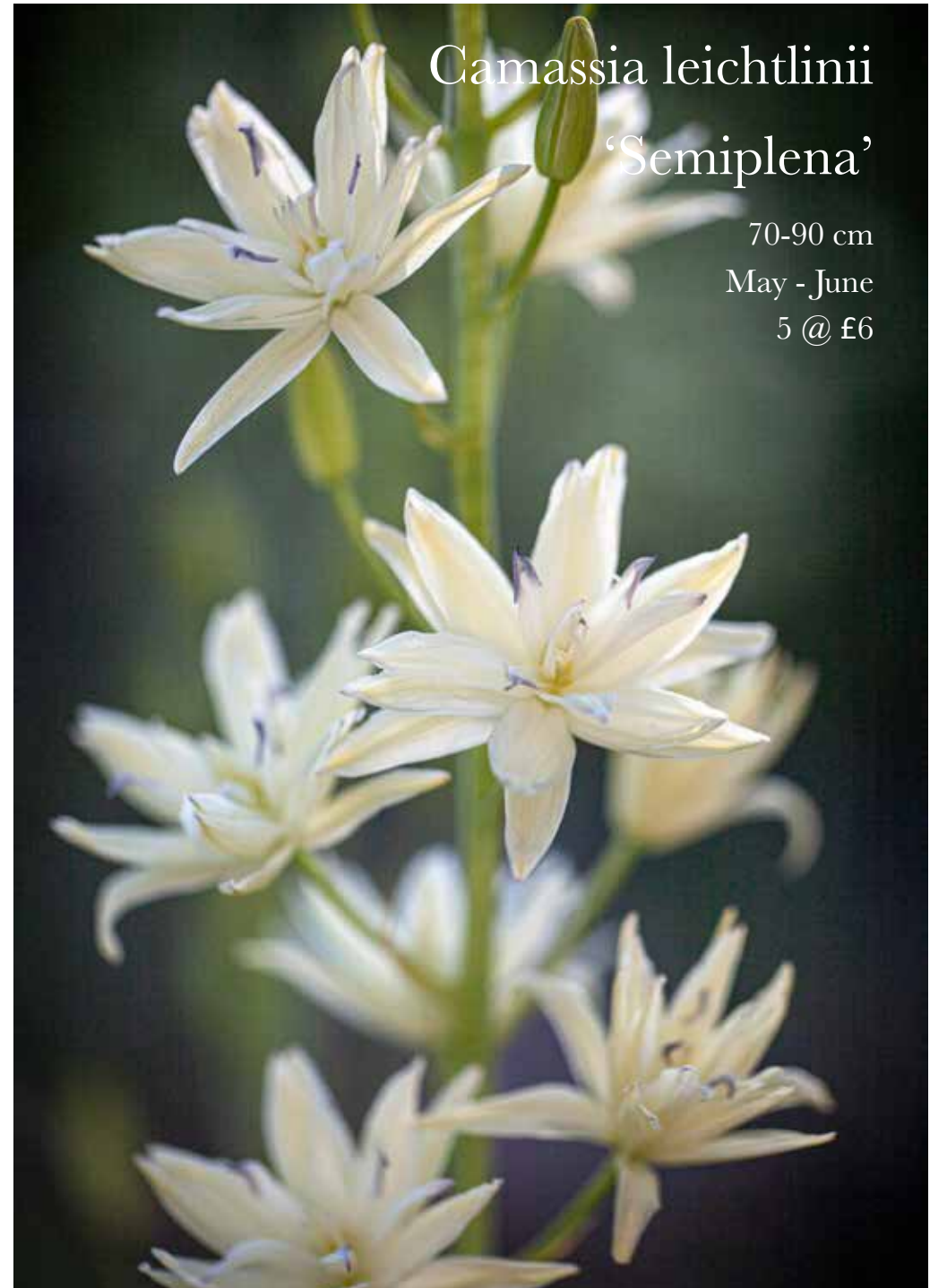
Camassia cuisickii

sky blue
60 cm
May
5 @ £6



Camassia leichtlinii alba

70 cm
May
5 @ £6



Camassia leichtlinii
'Semiplena'

70-90 cm
May - June
5 @ £6

Fritillaria persica

sumptuous, brings a little
sophistication to the garden
(top size 24/26 size bulbs)

75-100 cm

April

3 bulbs £12



Fritillaria pallidiflora (AGM)

The Siberian fritillary likes a cool well drained situation
and is perfect for informal planting : up to 5-6 nodding,
creamy butter-yellow flowers which are faintly speckled
inside. Eye-catching despite its reticent colour. The last in
the fritillary family to flower.

NEW

30-65cm

May - June

3 bulbs £7.50



Crocus 'Snow Bunting' (AGM)

small and delicate with lovely charcoal shading on outside petals



15cm

Feb - March

10 bulbs £2

25 bulbs £4

100 bulbs £12

Photos © Sabina Rüber

Linnels Farm

Hexham Northumberland NE46 1TS

T: 0783 213 2483

www.linnelsfarm.com