

# Faculty Matters

**UF** College of Medicine  
UNIVERSITY of FLORIDA

August 2017, Volume 1

<http://facultyaffairs.med.ufl.edu/>

## In This Issue

[Save the Date](#)  
[Congratulations](#)  
[New Grants](#)  
[FEO](#)  
[Delay](#)  
[Care.com](#)  
[UF & PepsiCo](#)  
[Funding](#)  
[Opportunities](#)  
[Wellness](#)  
[Loan Repayment](#)  
[HSC Workshop](#)  
[New Certificate](#)  
[Faculty Fellows](#)  
[Did you Know](#)  
[Be Safe](#)  
[UF Highlights](#)  
[Faculty Development](#)

**SAVE THE DATE**  
COLLEGE OF MEDICINE  
FALL FACULTY APPRECIATION RECEPTION  
TUESDAY, OCTOBER 24, 2017  
5 P.M. - 7 P.M.  
HARRELL MEDICAL EDUCATION BUILDING  
SCOTT COMMONS AREA

## Congratulations to the newly appointed promotion and tenure committee members

### Tenure Track Committee





**Dominick Angiolillo, MD, PhD**  
 Professor  
 Department of Medicine-Jacksonville  
 Cardiology



**Kevin R Vincent, M.D., Ph.D**  
 Associate Professor  
 Department of Orthopaedics  
 and Rehab Medicine



**Michael Gayle, MD**  
 Associate Professor  
 Department of Pediatrics-Jacksonville

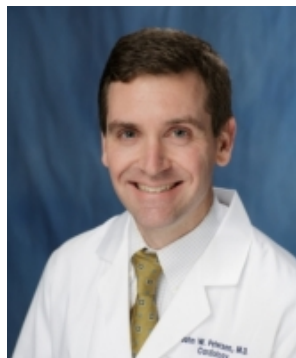
## Mission Track Committee



**Eileen M. Handberg, PhD,  
 ARNP**  
 Professor  
 Department of Medicine,  
 Cardiology



**Bruce Mast, MD**  
 Professor  
 Department of Surgery



**John Petersen, MD, MS**  
 Associate Professor  
 Department of Medicine,  
 Cardiology



**Elizabeth DeVos, MD**  
 Associate Professor  
 Department of Emergency  
 Medicine-Jacksonville

[Click Here for a full list of Committee members](#)

## New Grants Awarded!



**Herbert Schweizer, PhD.**  
 Professor, Department of Molecular Genetics & Microbiology has been awarded a National Institutes of Health new R21 grant entitled, "Membrane Bound Burkholderia Pseudomallei Pena Beta-Lactamase".

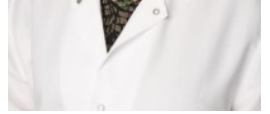
**Dorina Avram, PhD.**  
 Professor, Department of Medicine has been awarded a National Institutes of Health new R21 grant entitled, "Transcriptional Control of Genes Implicated in Suppression Function of Treg Cells".





**John Wingard, MD.**

Professor, Department of Medicine has been awarded a National Institutes of Health new UG1 grant entitled, "Core Clinical Consortium for Blood and Marrow Transplant Clinical Trials Network".



**Thomas Beaver, MD, MPH.**

Professor, Department of Surgery has been awarded a National Institutes of Health new R01 grant entitled, "The Effect of Intermittent Hemidiaphragm Stimulation During Surgery on Mitochondrial Function".



**Coy Heldermon, MD, PhD.**

Assistant Professor, Department of Medicine has been awarded a National Institutes of Health new R01 grant entitled, "Optimizing AAV vectors for central nervous system transduction".



**J. Andrew Berglund, PhD.**

Professor  
Department of Biochemistry & Molecular Biology



**Eric Wang, PhD.**

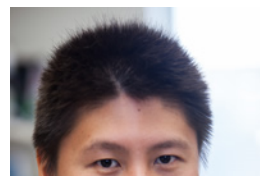
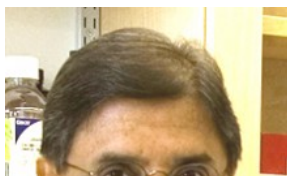
Assistant Professor  
Department of Molecular Genetics & Microbiology



**Maurice Swanson, PhD.**

Professor  
Department of Molecular Genetics & Microbiology

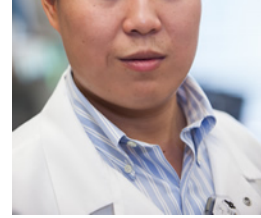
Drs. **Berglund, Wang, and Swanson** have been awarded a National Institutes of Health new R01 grant entitled, "Determining the factors that control dose-dependent splicing regulation by a master regulator".







**Arun Srivastava, PhD.**  
Professor  
Department of Pediatrics



**Chen Ling, PhD.**  
Research Assistant Professor  
Department of Pediatrics

Drs. **Srivastava** and **Ling** have been awarded a National Institutes of Health new R21 grant entitled, "AAV2 and hepatocellular carcinoma".

## Faculty Enhancement Opportunity (FEO)

The University of Florida Provost, Dr. Joseph Glover, recently announced the next Faculty Enhancement Opportunity (FEO) grant cycle which will award funds beginning in the Spring of 2018. The FEO grants are a wonderful opportunity for faculty to receive support for numerous types of faculty enhancement projects or training. If you are interested in applying, please read the information at <http://facultyaffairs.med.ufl.edu/more-faculty-news/fall-2017-faculty-enhancement-opportunity-feo/>. Please make sure you meet the eligibility requirements before applying (Faculty must have been hired on October 13, 2014 or earlier in order to qualify or equivalent as part time, contact us if you are unclear). The application form is available at the above FEO web page.

This is a 3 step process:

1. The College FEO committee (COM-FEO) requires a brief Letter of Intent (LOI) to be submitted as a one-line email sent to [hamleen@ufl.edu](mailto:hamleen@ufl.edu) to indicate that you will be preparing an application. Please tell us what date you joined the UF faculty and describe what is the activity you will be requesting support (1-2 sentences), an estimated total cost, and the time frame that the activity will take place (which must be between Jan and June 2018). The eLOI is due prior to September 8, 2017.
2. Your application will be reviewed by a COM committee to determine which will be recommended for support. You will be informed if your application needs any clarification and if it will be submitted for University consideration.
3. If supported by the COM FEO review committee, your application will be submitted to the Provost on or before the University submission deadline of October 13, 2017, for consideration by the University committee.

Please send any questions or suggestions. This is an excellent faculty opportunity that is supported by the COM Faculty Council, Dean Good, Dean Haley, Provost Glover and President Fuchs.

## Aug. 7-Sept. 24: Southwest 16th Street access to E.R. and cancer hospital will close, reroute to Archer Road entrance

**UF HEALTH SOUTH CAMPUS CONSTRUCTION**

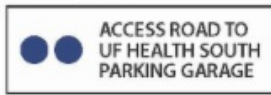
**UTILITIES INSTALLATION  
AUG. 7-SEPT. 24, 2017**

Please use the Southwest Archer Road entrance for cancer hospital and adult E.R. access.

<span style="color: yellow; font-size: 2em;">X</span>	PHASE I: Aug. 7-27
<span style="color: blue; font-size: 2em;">X</span>	PHASE II: Aug. 27-Sept. 24

**UF HEALTH SOUTH  
PARKING GARAGE  
ENTRANCE ON  
SOUTHWEST 13TH  
STREET TO BE  
CLOSED FOR UTILITY  
WORK AND PAVING.  
AUG. 7-SEPT. 15, 2017**

Please use Southwest 14th Avenue to circulate and access garage entrance.



Starting Aug. 7, installation of underground utilities will begin on Southwest 16<sup>th</sup> Street- adjacent to the UF Health Shands E.R. Installation will occur in two phases. During this time, access will remain open for ambulance traffic only. Regular vehicle traffic will be closed and rerouted to enter the facilities from Southwest Archer Road. During this project, pedestrian traffic will remain accessible on the west side of the street (adjacent to the VA). Traffic access to the 1329 Building and garage will occur via Southwest 16<sup>th</sup> Avenue.

### Phase 1: Aug. 7-27

Installation will begin on Southwest 16th Street between the 1329 Building garage and the construction site of the former nursing home.

### Phase 2: Aug. 27-Sept. 24

Installation will continue from the former nursing home site to Archer Road.

### Patient Parking & Access

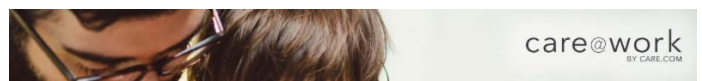
- Parking will be mostly valet with several disability spaces. This is not a staff parking area.

### Road Changes for Vehicle & Foot Traffic

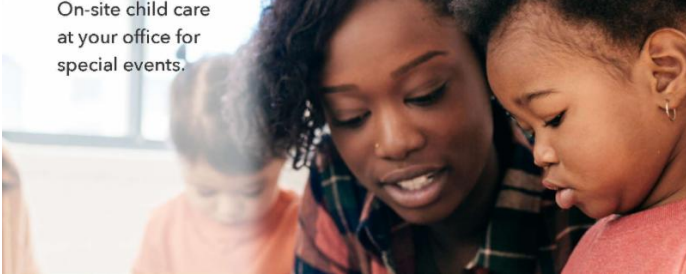
#### *For the duration of this project*

- To access the E.R. and cancer hospital, use the Archer Road Circle of Hope main entrance (across from Newell Drive).
- Highway signs and flagmen will redirect traffic.
- These access changes will be coordinated with Alachua County EMS, Gainesville Fire Rescue, UF Health ShandsCair and other emergency transport agencies.
- Pedestrians can use the sidewalk on the west side of Southwest 16th Street (closest to the VA).

## Care@Work for faculty and staff



On-site child care  
at your office for  
special events.



Unlimited access to the  
largest online marketplace  
for finding care.



One-of-a-kind tutors  
for one-of-a-kind kids.



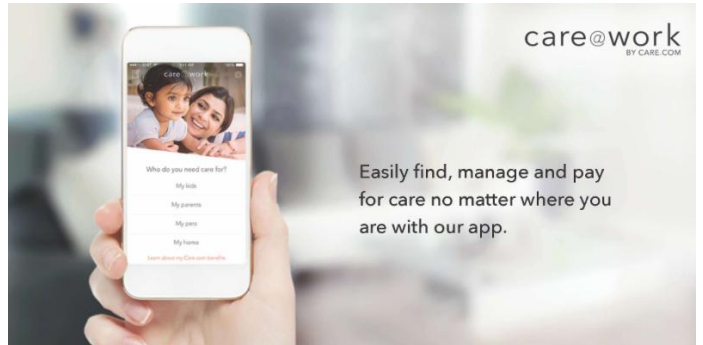
Walkers, groomers and  
boarders for your best  
furry friend.



Housecleaning hotshots,  
laundry pros, and errand experts.



Easily find, manage and pay  
for care no matter where you  
are with our app.



Better care starts here.  
Welcome to your Care@Work benefits.



Activate your Care Benefits at:  
[uf-com.care.com](http://uf-com.care.com)  
or call 855.781.1303



## Vote for a UF Health sustainability grant



### Sustainability Grant - 158 words

#### Vote for Think Green!

Help select a \$10,000 PepsiCo™ sustainability grant to support UF Health Shands

PepsiCo™ is an official partner of UF and shares UF Health Shands' commitment to sustainability practices. That's why UF Health Shands and PepsiCo™ are collaborating to give employees an opportunity to Think Green!



For the Think Green! campaign, PepsiCo™ will support our hospital system with a \$10,000 sustainability grant. During the submission period, individuals or teams of up to five UF Health Shands employees submitted ideas to improve a department, facility or the organization in an eco-friendly way.

A selection committee has chosen the finalists and now voting is open to all our faculty, residents, staff and volunteers across UF Health. Voting will be open to the public via UF Health's social media channels, so be sure to check UF Health's official Facebook and Instagram accounts and share with friends. From Aug. 14-25, visit [UFHealthThinksGreen.com](http://UFHealthThinksGreen.com) to vote for your favorite sustainability proposal!

---

## UF Funding Opportunities

### Request for Pilot and Exploratory Study Proposals

**Claude D. Pepper Older Americans Independence Center focused on Mobility and Prevention of Disability**



**\*\*\*\*\*Full Application due September 15, 2017\*\*\*\*\***

The University of Florida Claude D. Pepper Older Americans Independence Center (OAIC), director Marco Pahor, MD, is seeking innovative, interdisciplinary Pilot and Exploratory Study (PES) applications which address the above-mentioned focus. Successful applications should collect pilot data that will lead to extramural research grants and/or career development awards. For more information [Click Here](#) and attached [RFA](#).



---

### Give Yourself a Boost at Work, 30 Ways in 30 Days

Give your next break a "boost!" Learn how to maximize your work breaks to improve focus, increase productivity and get an instant boost of energy. [Sign up](#) to participate in Boost: 30 Ways in 30 Days and receive four weeks of daily boosts. Each boost, delivered to you via email, provides a short activity designed to help you renew and reenergize physically, mentally, socially and spiritually.



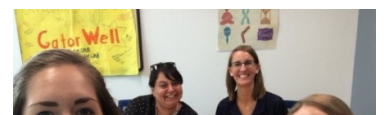
**The program begins August 7 and runs through September 1.**

---

### Booster Break Group Challenge Now Open

Start a group "booster break" with colleagues in your area for a chance to win a free lunch for your group!

Last year's winners from GatorWell are pictured. Here's how to participate:



1. Establish a regularly occurring booster break with colleagues in your area. See last

1. Establish a regularly occurring booster break with colleagues in your area. See last September's issue of [UF at Work](#) for more information and inspiration from your fellow employees.
2. Submit your entry to [hws-wellness@ufl.edu](mailto:hws-wellness@ufl.edu) by Friday, Sept. 29, to be entered into a drawing to win lunch for your group (up to 20 group participants). Include the information below in your submission:



- **What?** Describe the activities you engage in as a group.
- **When?** Provide how often and at what time you meet (e.g., daily from 10:30-10:45 a.m., weekly from 3-3:10 p.m.).
- **Where?** Tell us where your group meets.
- **How?** Provide a picture of your group on break together.

---

## Please Share with any Eligible Candidate\*

(\*Generally early career with extramural research funding)

**SAVE THE DATE**

**LOAN REPAYMENT GRANT WRITER'S WORKSHOP**

---

**SAVE THE DATE:** Friday August 18, 2017 from 2:00 to 5:00 pm  
**LOCATION:** C1-3 Communicore Bldg.

**MAIN PRESENTER: DR. TOM PEARSON, MD, PHD, MPH**  
**DISCUSSION PANEL WITH GRANT REVIEWERS AND RECIPIENTS**

**WHO SHOULD ATTEND:**

- EVERYONE INTERESTED IN OBTAINING A LOAN REPAYMENT GRANT



National Institutes of Health  
Division of Loan Repayment

QUESTIONS TO:  
MARIA GAVIDIA EMAIL: [mqavidia@ufl.edu](mailto:mqavidia@ufl.edu)

 **Clinical and Translational Science Institute**  
UNIVERSITY OF FLORIDA

The UF CTSI is supported in part by NIH awards  
UL1 RR029890, KL2 RR029888 and TL1 RR029889

---

## Upcoming Health Science Center Library Workshop

The Health Science Center Library will offer the following workshops in August, independent of registered coursework and open to all.

Please register at least 24 hours in advance by clicking on the desired workshop link below or at: <https://rod.sumtotalsystems.com/ufshands/learner/search/catalog?RootNodeID=-1&NodeID=276&UserMode=0>

### Medical Terminology

*Part 3: Tuesday, August 15, 1-3pm, Communicore Building Room C2-41A*

[https://rod.sumtotalsystems.com/ufshands/app/management/LMS\\_ActDetails.aspx?UserMode=0&ActivityId=23443](https://rod.sumtotalsystems.com/ufshands/app/management/LMS_ActDetails.aspx?UserMode=0&ActivityId=23443)

Basics of medical terminology. Key concepts and word building, as well as the basics of body structure, including cells, tissues, organs and body planes will be covered. **Parts 1, 2 and 3 make up a single 6-hour course. Attendees should plan to attend all three sessions in order to complete the training.**

---

## New Certificate Program Prepares Biomedical Scientists for Careers with Teaching, Research, and Mentoring Responsibilities.

A 9-credit hour, **Biomedical Scientist as Educator Certificate**, sponsored by CTSI and the





**College of Medicine** will prepare the next generation of biomedical scientists for proficiency as faculty. These courses, taught with didactic, reflective, and hands-on experiential learning activities have been designed to certify that program participants will be prepared to teach, conduct educational research and mentor students upon entry into their future academic positions. Courses are taught online. Cohort-instructor interactions will occur via the use of online discussion boards. This approach is intended to maximize flexibility for the working professional who has significant laboratory and/or clinical responsibilities. Students will develop course products and outcomes relevant to the development of an educational portfolio. The average workload is estimated at about 3-4 hours per week. [Click Here for more information.](#)

## CERTIFICATE COURSES

### 1. [GMS 6951 Teaching Biomedical Science \(2 credits\) - Fall 2017](#)

Students will acquire the skills necessary for creating and modifying biomedical science courses through a combination of self-awareness activities and information that informs teaching. Students will use their skills to: (a) write a teaching philosophy and (b) draft components of their biomedical science course syllabus. No prerequisite.

### 2. [GMS 6952 Curricular Models for Biomedical Science \(3 credits\) - Spring 2018](#)

Students will be introduced to various models of teaching and their related instructional strategies. A major emphasis will be on (a) assisting students in the development of their teaching repertoire in biomedical science content, (b) adding new instructional strategies and (c) developing and revising biomedical science curriculum for courses that they will teach prospectively. **6951 Teaching Biomedical Science is a prerequisite.**

### 3. [GMS 6954 Assessing Effectiveness of Biomedical Science Teaching and Curricula \(3 credits\) -Summer 2018](#)

Students will receive an overview of the theory of evaluation and apply practice connections to conducting an evaluation study. Working together, students will develop a proposal for an evaluation study, undertake a component of the proposed evaluation study, write and present related findings.

**GMS 6951 Teaching Biomedical Science and GMS 6952 Curricular Models for Biomedical Science are prerequisites.**

### 4. [GMS 6953 Art and Science of Mentoring \(1 credit\) - Summer 2018](#)

Participants will acquire the knowledge and skills required to effectively mentor other professionals who are in early stages of career development and to enhance their own experiences as mentees. Students will use their skills to: (a) complete an individual development plan, (b) identify ethical dilemmas in mentoring and describe strategies to prevent them, and (c) articulate their own mentoring philosophy.

**GMS 6951 Teaching Biomedical Science, GMS 6952 Curricular Models for Biomedical Science, and GMS 6954 Assessing Effectiveness of Biomedical Science Teaching and Curricula are prerequisites.**

**Registration:** *Graduate Students* , self-register (*no departmental controls*); *Postdoc and Faculty* must submit a

**UF Registrar; "non-degree"** application **each term** registered. (email [sgard@ufl.edu](mailto:sgard@ufl.edu) once application has been submitted)

<https://registrar.ufl.edu/registration/employeeed>



**Promoting Deep Thinking**

<https://www.ctsi.ufl.edu/education/>

## Entrepreneurship Faculty Fellows

The program is open to all full-time UF faculty members, including those from all disciplines and academic areas on the campus. We seek academic entrepreneurs or faculty interested in integrating an



entrepreneurial mindset and related concepts, tools, and frameworks into their home discipline; particularly into their research, teaching, or outreach activities.

Applications to become an Entrepreneurship Faculty Fellow are accepted on a rolling basis, with up to five new fellows being accepted each year. To qualify, a faculty member needs to propose an initiative that reflects the interface between their own academic area and entrepreneurship. Proposals can center on any professional activity that the individual wants to pursue over the next few years.



[Click Here for more Information](#)

## Did You Know?



The Rape Aggression Defense (R.A.D.) Women's Physical Defense program was designed with the needs and strengths of women in mind.

In the class, you will learn practical safety tips and risk reduction strategies, have the chance to practice specialized defensive techniques, and utilize those techniques in dynamic

**Fall 2017**  
**R.A.D. Schedule of Classes**  
 All spring classes are now full

August	29, 31, Sept. 5 & 7	6:30-9:30pm
September	18, 20, 25, & 27	6:30-9:30pm
October	2, 4, 9, & 11	6:30-9:30pm
October	17, 19, 24, & 26	6:30-9:30pm

**Free Self-Defense Education for**

utilize those techniques in dynamic simulations.

October 21, 23, 24, & 26  
November 7, 9, 14, & 16

6:30-9:30pm

Most importantly, R.A.D. classes are fun and provide you with the knowledge and techniques to avoid potentially dangerous situations and to effectively defend yourself in a violent encounter.

Register by emailing the program coordinator, Morgan Bright, at [morganbright@ufl.edu](mailto:morganbright@ufl.edu). Please provide your name, email address, phone number, and which class you would like to attend.



UNIVERSITY OF FLORIDA  
**POLICE**  
DEPARTMENT

*Women of all ages and fitness levels have successfully participated in this program.*

**nse**  
**Women**

R.A.D. classes are free, but enrollment is limited to ensure the highest level of quality instruction.

All spring classes are now full. The summer and fall 2017 class dates are listed above.

Register by emailing the Program Coordinator, Morgan Bright, at [morganbright@ufl.edu](mailto:morganbright@ufl.edu) and please provide her with the following

info:

- Name
- E-mail address
- Phone number
- Class dates you would like to attend

[Click here for more information](#)



## Be Safe

Always be vigilant and take measures to ensure personal safety.

1. If you see suspicious individuals on campus, please report them immediately to the University Police Department at 392-1111 or UF Health Shands security at 265-0109. If you feel you are in immediate danger, please dial 911.

2. If you are working after business hours, be sure to keep your door closed and locked. If someone knocks, ask for verbal identification of the individual outside the door.



UNIVERSITY OF FLORIDA  
**POLICE**  
DEPARTMENT

If you or someone you know would like to talk confidentially with professionals about this or any work place event, please contact the UF Employee Assistance Program at 392-5787.

## UF Health Highlights







## Meet UF Physician Kelly Foote, MD



**Next meeting, Tuesday, September 5, 2017  
at 5:00 pm in M-112**

Check the website for information about meetings and activities:

<http://facultycouncil.med.ufl.edu/>



## Upcoming Educational & Professional Development Seminars:

### Educational Development Seminars



*Giving Effective Lectures*

Thursday September 28, 2017

12 pm-1 pm

Teleconferenced from JAX in Communicore C3-17

Dr. Jim Dennis

[Livestream link](#)



### **Educational Scholarship Program Series**

### Professional Development Seminars



*Overview of UF COM: Understanding its structure and your role (of particular interest for new faculty)*

Wednesday September 13, 2017

5 pm-6 pm

Harrell Medical Education Building room 128

Dr. Marian Limacher



### **Constructing your Professional Toolkit Series**

- *Toolkit I - CV, biosketch, promotion packet* Wednesday October 11, 2017 at 5 pm Harrell Medical Education Building room 128
- *Toolkit II - Essentials of mentoring and being mentored* Wednesday October 18, 2017 at 5 pm Harrell Medical Education Building room 128

- *Toolkit III - Self-promotion or smart positioning*  
Wednesday October 25, 2017 at 5 pm  
Harrell Medical Education Building room 128

✓ *Maintaining Resilience and Vitality*  
Wednesday November 15, 2017 at 5 pm  
Harrell Medical Education Building room 128

✓ *Professionalism in the workplace: what to do, how to respond*  
Wednesday December 06, 2017 at 5 pm  
Harrell Medical Education Building room 240  
Dr. Marvin Dewar and Dr. Timothy Flynn

[If you are not able to attend, click here to view the recorded session](#)

