



Furrow Auction Company

1022 Elm Street, Knoxville, TN 37921
Phone 865.546.3206 • Fax 865.525.4179
www.furrow.com

IND-ATI Foil Huntsville, AL 4/22/2015

Alabama License # 5197

TN Firm License # 62

TN Auctioneer License # 5866

1 (2) Black & Decker Electric Drills, 1/2", 3/8"



2 (3) Conductivity Test Meters, (1) Accumet, (2) LET LCR Meters



3 Omega Mdl HH804W Test Gauge



4 Tekscope Otoranging 60MHz Scope



5 Dosimeter Torque Wrench, Starrett Depth Gauge, Height Gauge, 12"



6 Tool Box on casters, W/contents, Bolts, Nuts, Fasteners, O-Rings, Clamps, etc



7 Manual Pipe Bender



IND-ATI Foil Huntsville, AL 4/22/2015

8 Greenlee PVC Heater, 1/2" to 6"



9 Banding Reel, W/Metal Banding



10 Banding Reel, W/Nylon Banding, Banding Tools, etc



11 Dake No 0 Arbor Press



12 Jet 2-Ton Arbor Press



13 Dayton NO 2-Ton Arbor Press



14 Dayton NO 2-Ton Arbor Press



15 2-Ton Arbor Press



16 Dayton NO 2-Ton Arbor Press



IND-ATI Foil Huntsville, AL 4/22/2015

17 Dayton NO 2-Ton Arbor Press



18 2-Ton Arbor Press



19 Greenlee 2-Drawer Jobox on Casters, 56" X 60" x 24"



20 Welsaw Mdl 8 Horizontal Band Saw, S/N 20178, W/ 94" X 13" Section Roller Conveyor



21 Peck Stow & Wilcox 137 36" Stomp Shear



22 Rockwell 6" Belt Sander



23 Clausing Series 16SC Drill Press



24 K.O. Lee No S714 Surface Grinder, W/6" X 14" Magnetic Chuck



25 Autool Grinder Mdl 12 Precision Tool Grinder, S/N 21210RCB3



IND-ATI Foil Huntsville, AL 4/22/2015

26 Monarch 10" X 22" Engine Lathe, W/Collet Chuck, Collets



27 Hardinge Mdl DV-59 Tool Lathe, 8" Swing, 28" Bed



28 Republic 14" Swing, 36" Between Center Engine Lathe, W/(3) Jaw Chuck



29 Republic 14" Swing, 36" Between Center Engine Lathe, W/Center Rest, Tooling, etc



30 Pratt & Whitney 16" X 54" Engine Lathe



31 Leblond No 13, 13" X 32" Between Center Engine Lathe



32 Lagun Mdl FTS-2 Vertical Milling Machine



33 Bridgeport Series II Vertical Milling Machine



34 Shop Press Frame, (no hydraulics)



IND-ATI Foil Huntsville, AL 4/22/2015

35 Miller Falls Tool 1/2hp Pedestal Grinder



36 Parts Bins W/Fuse Clamps, Switches, Electrical Connectors, etc



37 (2) 2-Door Metal Storage Cabinets, W/Contents, Misc Drill Bits, End Mill Bits, etc



38 14" Rotary Table



39 6" Jaw Machinist Vice



40 Indexing Head, W/Tail Stock



41 Ridgid Supreme Auto Tapping Head



42 Ridgid Supreme Auto Tapping Head



43 Right Angle Head For Milling Machine



IND-ATI Foil Huntsville, AL 4/22/2015

44 Tool Box W/Contents, Misc Lathe Tools, Hammers, Tools, etc



44A Wooden Tool Box W/Contents, Misc End Mill Bits, Die Inserts, Tooling, etc



45 Whitney Jensen No 5 Junior Hand Punch Set



46 Whitney Jensen No 5 Junior Hand Punch Set



47 (4) Bins W/Rimmers, Drill Bits, etc



48 (4) Plastic Bins, End Mill Bits



49 Mill Cutters, Centers, etc



50 Set Rimmers



51 (2) Bins Various Size Drill Bits



IND-ATI Foil Huntsville, AL 4/22/2015

52 Various Size Collets



53 Misc Rimmers, Cutters, etc



54 Misc Center Punches



55 Set Minute Man Keyway Broaches



56 Starrett Block Gauges



57 Starrett Precision Level, Dial Indicators, Gauges, 12" X 18" X 4" Granite Surface Plate



58 Greenlee Knock Out Punches, Knock Out Punch Parts



59 Greenlee Mdl 690 Fishing System, Backend/Blower



60 36" X 72" Metal Framed Wooden Top Work Table



IND-ATI Foil Huntsville, AL 4/22/2015

61 36" X 72" Metal Framed Wooden Top Work Table



62 36" X 72" Metal Framed Wooden Top Work Table



63 36" X 72" Metal Framed Wooden Top Work Table



64 Metal 2-Door Storage Cabinet, W/Contents, Fuses, Fasteners, etc



65 Rampack Porta Power



66 Set (4) Machine Skates



67 48" X 36" Metal Table , W/4" Jaw Vise



68 36" X 72" Metal Framed Wooden Top Work Table



69 (3) Small Metal Tables



IND-ATI Foil Huntsville, AL 4/22/2015

70 PVC Valves, Fittings, etc



71 5-Shelf Adjustable Metal Shelf, 24" X 48" X 52" on casters



72 Tray-Top Cintilathe 18" Swing X 60" Between Centers Engine Lathe, W/Post Grinder attachment



73 Hobart Cyber-tig 130 Series, Tig Welder



74 Lincoln Idealarc 250 Stick Welder



75 Toyota Forklift Mdl 42-6FGU20 4,000LB 136" Lift Solid Tire LP Gas, S/N 61331



76 Nissan Forklift 30 Mdl CPH01A15Y 3,000LB, 167" Lift Solid Tire, LP Gas, S/N CPH01-001269



77 Simon Falcon Scissor Lift 2034 20' H, 500LB



IND-ATI Foil Huntsville, AL 4/22/2015

78 Crab 120 Volt, Single Phase Pallet Wrap Machine (shrink wrap)



79 Loconse Precision Technology Corp Inscale Mdl LP7510A 5,000LB Digital Platform Scale



80 Uline 2200LB Highlift Pallet Jack



81 Wesco 5,000LB Pallet Jack



82 Uline 5,000LB Pallet Jack



83 5,000LB Pallet Jack



84 Central Hydraulic 2-Ton Shop Hoist



85 Hydraulic Die Cart



86 Global 2,000LB 10', 120" X 120" Portable Gantry (new)



IND-ATI Foil Huntsville, AL 4/22/2015

87 Global 2,000LB 10', 120" X 120" Portable Gantry (new)



88 Rectifier Input 480 Volt, 277 AMP, 60HRz, 3-Phase 230 KVA, Output, 500 Volt, 400 AMP, 60 HRz 3-Phase 230 KVA, 200 KW, 100% Continuous Cycle, Weight 2635LB (4-8-13) (never installed)



89 Rapid Power Technologies Rectifier Input 480 Volt, 330 AMP, 60HRz, 3-Phase, Output 350 Volt, 700 AMP, 245KW, Continuous Duty Cycle



90 Rapid Power Technologies Rectifier Input 480 Volt, 375 AMP, 60HRz, 3-Phase, Output 550/412 Volt, 500 AMP, 275KW, Continuous Duty Cycle



91 Rapid Power Technologies Inverter 480 Volt, 130 AMP, 60HRz, 3-Phase, Output 950 Volt, 100 AMP, 95KW, Continuous Duty Cycle



92 Dyna Power Rectifier Input 480 Volt, 277 AMP, 60HRz, 3-Phase, 230KVA, Output 500 Volt, 400 AMP, 200KW, Continuous Duty Cycle, Weight 2635LB (4-19-2013)



93 Dyna Power Rectifier Input 480 Volt, 370 AMP, 60HRz, 3-Phase, 280KVA, Output 350 Volt, 700 AMP, 245KW, Continuous Duty Cycle, Weight 2700LB (4-19-2013)



IND-ATI Foil Huntsville, AL 4/22/2015

- 94** Dyna Power Rectifier Input 480 Volt, 377 AMP, 60HRz, 3-Phase, 280KVA, Output 350 Volt, 700 AMP, 245KW, Continuous Duty Cycle, Weight 2755LB (10-29-2012)



- 95** Dyna Power Rectifier Input 480 Volt, 277 AMP, 60HRz, 3-Phase, 230KVA, Output 500 Volt, 400 AMP, 200KW, Continuous Duty Cycle, Weight 2635LB (4-19-2013)



- 96** Dyna Power Rectifier Input 480 Volt, 337 AMP, 60HRz, 3-Phase, 280KVA, Output 350 Volt, 700 AMP, 245KW, Continuous Duty Cycle, Weight 2700LB (4-19-2013)



- 97** Rapid Power Technologies Rectifier Input 480 Volt, 523 AMP, 60HRz, 3-Phase, Output 550/435 Volt, 700 AMP, 385KW, Continuous Duty Cycle



- 98** Rapid Power Technologies Rectifier Input 480 Volt, 506 AMP, 60HRz, 3-Phase, Output 750 Volt, 500 AMP, 375KW, Continuous Duty Cycle



- 99** Rapid Power Technologies Rectifier Input 480 Volt, 330 AMP, 60HRz, 3-Phase, Output 350 Volt, 700 AMP, 245KW, Continuous Duty Cycle



- 100** Rapid Power Technologies Rectifier Input 480 Volt, 330 AMP, 60HRz, 3-Phase, Output 350/267 Volt, 700 AMP, 245KW, Continuous Duty Cycle



IND-ATI Foil Huntsville, AL 4/22/2015

101 Rapid Power Technologies Rectifier Input 480 Volt, 330 AMP, 60HRz, 3-Phase, Output 350/267 Volt, 700 AMP, 245KW, Continuous Duty Cycle



102 Rapid Power Technologies Rectifier Input 480 Volt, 130 AMP, 60HRz, 3-Phase, Output 950 Volt, 100 AMP, 95KW, Continuous Duty Cycle



103 Spang Rectifier Rating 280KW, Input 480 Volt, 60HRz, 3-Phase, Output 700ADC 0-300 (VDC Tap 1) 0-400 (VDC Tap 2)



104 Rapid Power Technologies Rectifier Input 480 Volt, 385 AMP, 60HRz, 3-Phase, Output 450 Volt, 600 AMP, 270KW, Continuous Duty Cycle



105 Rapid Power Technologies Rectifier Input 480 Volt, 407 AMP, 60HRz, 3-Phase, Output 700 Volt, 500 AMP, 360KW, Continuous Duty Cycle



106 Rapid Power Technologies Rectifier Input 480 Volt, 523 AMP, 60HRz, 3-Phase, Output 550 Volt, 700 AMP, 385KW, Continuous Duty Cycle



107 Rapid Power Technologies Rectifier Input 480 Volt, 307 AMP, 60HRz, 3-Phase, Output 500 Volt, 450 AMP, 225KW, Continuous Duty Cycle



IND-ATI Foil Huntsville, AL 4/22/2015

108 Rapid Power Technologies Rectifier Input 480 Volt, 506 AMP, 60HRz, 3-Phase, Output 750 Volt, 500 AMP, 375KW, Continuous Duty Cycle



109 Rapid Power Technologies Rectifier Input 480 Volt, 382 AMP, 60HRz, 3-Phase, Output 700 Volt, 400 AMP, 280KW, Continuous Duty Cycle



110 Application Engineering Mdl PSA 7.5 460 Volt, 60HRz, 3-Phase, 7.5hp, Chiller, S/N 30F0547



111 (6) Section Pallet Racking, 42" X 96" X 120" W/Metal Grating



112 (6) Section Pallet Racking, 42" X 96" X 120" W/Metal Grating



113 (6) Section Pallet Racking, 42" X 96" X 120" W/Metal Grating



114 (6) Section Pallet Racking, 42" X 96" X 120" W/Metal Grating



115 (5) Section Pallet Racking, 42" X 96" X 120" W/Metal Grating



IND-ATI Foil Huntsville, AL 4/22/2015

116 (5) Section Pallet Racking, 42" X 96" X 120" W/Metal Grating



117 (3) Section Pallet Racking, 42" X 96" X 120" W/Metal Grating, (3) Section Pallet Racking 42" X 96" X 96"



118 (2) 2-Door Metal Storage Cabinet, W/Contents, Misc Paper Supplies, Labels, etc, 4-Drawer Metal File Cabinet, Metal Work Table, Misc Lab Equipment, etc



119 SPI Sputter Gold Coater Mdl 12121, W/Top Lid and Vacuum Pump



120 Rotary Vacuum Pump



121 AP Buck IH Pump , W/Charger



122 Electric Stirrer



123 HP Mdl 6448B DC Power Supply



IND-ATI Foil Huntsville, AL 4/22/2015

124 Power Supply



125 American Products PH Analyzer, Nuova II Stirrer, (2) Electric Soft Starts



126 Leica Stereoscan 440i Scanning Electron Microscope



127 LKB 2178 Knife Maker II



128 Polaroid MP4 Land Camera System, W/ Mdl 1-150, Kenro Mdl MP-1035 Viewer



129 LKB Bromma Electric Stirrer



130 LKB Anti-vibration Table



131 Contents Room: (2) Desk, Mid-back Task Chairs on casters, (2) 4-Drawer Metal File Cabinets, Test Cabinet, etc



IND-ATI Foil Huntsville, AL 4/22/2015

132 Wooden Glass Front 2-Door Display Cabinet



133 Contents Room: Metal Cabinets, 10' 42" Metal Framed Pressed Wood Top Conference Table, Metal Double Pedestal Desk, 2-Drawer Metal File Cabinet, etc



134 Harrington Electric 1/2-Ton Chain Fall Hoist



135 Global 10' X 10' 2,000LB Gantry on casters, W/CN Loadstar, 1/2-Ton Electric CN Loadstar Hoist



136 R & D Specialty Series 150, 80 Gallon per minute RO System



137 Contents Pallet, Approx (35) 50LB bags Soft Pure, Water Softener Salt



138 Cleaver Brooks Mdl CB400-200 150PSI, Natural Gas Boiler, Manufac 5-3-1983



139 Adco Boiler Co. Fresh Feed Water Pump System (2) Pumps



IND-ATI Foil Huntsville, AL 4/22/2015

140 Precision Mdl ST36D-1280D-480-150 1280KW, 150PSI, Electric Boiler Manufac 7-2006



141 Cutler Hammer 480/277 Volt, 3-Phase, Circuit Breaker, 10-3-2006



142 Quincy Mdl QSI-500 100hp, Rotary Screw Air Compressor



143 Quincy Mdl Q7400 100hp, Rotary Screw Air Compressor



144 Ingersoll Rand TMS 0540 Air Dryer, Water Cool



145 Approx 500 Gallon Air Storage Tank



146 2-Door Metal Storage Cabinet, W/Contents, Valves, Pipe Fittings, Filters, etc



147 Metal Grating, Angle, Conduit, etc



148 Metpro Scrubber System, W/Blower, PVC Tank, etc



IND-ATI Foil Huntsville, AL 4/22/2015

149 Marley Series 220 Cooling Tower, S/N 222-411



150 SS Acid Tank 6,000 Gallon, KARI Kool Transport Tank Mdl 36102



151 Approx 5,000 Gallon Metal Storage Tank



152 SS Storage Tank W/(2) Pumps, Approx 5,000 Gallon, SS Heater



153 60" Warehouse Fan



154 Metal Conduit Pipe, Pipe Racks



155 Contents Room: (2) Metal Pipe Racks, Misc Size PVC, Conduit



156 Square D, Switch Gear, W/Prologic Controls, Powerlogic Circuit Monitor, Breakers, etc



157 Porta Cool 2000 36" Fan



IND-ATI Foil Huntsville, AL 4/22/2015

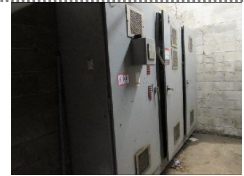
158 Marley Tower S/N 47175



159 Square D, Switch Gear, W/Square D 2500/333KVA Dry Transformer, Breakers, etc



160 Arco Electric Power Factory Compasidor KVR 1200 , 480 Volts, 60HRz, 3-Phase, 1443.6 AMP, Capacitance 16186.3



161 Bottle & LP Gas Storage Rack



162 (2) Siemens Switch Gear Cabinets, W/Breakers, Mains, Disconnects, etc, W/Dry Transformer, (2) Metal Cabinets, Storage Locker, etc



163 A-Frame type Metal Storage Rack, W/PVC, Pipe, Conduit, etc



164 (2) 4' X 8' Sheets SS



165 42" Warehouse Fan



IND-ATI Foil Huntsville, AL 4/22/2015

166 42" Warehouse Fan



167 36" Warehouse Fan



168 24" Warehouse Fan



169 30" Warehouse Fan



170 (2) Pedestal Fans



171 (2) Pedestal Fans



172 (2) Pedestal Fans



173 (2) Pedestal Fans



174 (2) Pedestal Fans

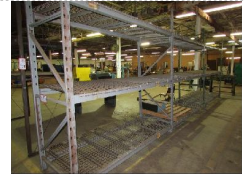


IND-ATI Foil Huntsville, AL 4/22/2015

175 (1) Pedestal Fan, 24" Fan, (3) Small Fans, (3) Space Heaters



176 (3) Sections 36" X 96" X 120" Pallet Racking



177 (2) Sections 36" X 96" X 120" Pallet Racking



178 (3) Glass Front 2-Door Cabinets Metal Frame, W/Lab Beakers, Jars, etc



179 Remaining Contents Room: Metal Cabinets, Office Chairs, Microwave Oven, etc



180 (10) 5-Gallon Buckets Dry Wall Compound, (8) Boxes Ceiling Tiles



182 12' Wooden Wall Cabinets, Base Cabinets, W/SS 2-Compartment Sink, W/ Counter-top



183 (4) 2-Wheel Dollies



184 (3) Shop Carts



IND-ATI Foil Huntsville, AL 4/22/2015

185 (2) Shop Carts (flatbed type)



186 (2) 4' X 8' Sheets SS, (1) 4' X 8' Expanded Metal



187 Werner Aluminum 40' Extension Ladder



188 Louisville 20' Fiberglass Extension Ladder



189 8' Fiberglass Step Ladder, 4' Fiberglass Step Ladder



190 (2) Set Warehouse Steps, (1) 5', (1) 3', (1) Custom Built 6' Warehouse Steps



191 Homs 1,000LB Scale



192 Contents (8) Pallets, Metal, Machine Parts, AL thread, Pipe, (6) Pieced 3" X 1" Channel



193 Taicang Yu yu Plastic Co. 60" Roll Slitter



IND-ATI Foil Huntsville, AL 4/22/2015

194 Stanford Dr Machine 36" Decoiler/Rewinder Mdl 142, S/N 3945018



195 Acme Steel Box Stitcher



196 Di Acro 24" Finger Brake



197 Metal Foremans Work Station, (2) Custom Built Metal Work Tables



197A Howe Richardson XL 1000LB Scale



198 Toledo Springless 125LB Scale



199 Set Toledo Springless 1,000LB Scale



200 Set Toledo Springless 1,000LB Scale



201 Metal Cutting Chop Saw



IND-ATI Foil Huntsville, AL 4/22/2015

202 (3) Metal Work Tables, Metal Shop Cart, Pipe Stand, W/Rollers



203 Contents (3) Sections Metal Racking, Chain, Pipe Repair Kits, Signs, etc



204 Contents (2) Shelves, Pipe Fittings, Gauges, Rollers, Bearings, etc



205 Contents (4) Shelves, Electrical Components, Bearings, etc



206 Contents (2) Shelves, Conduit Fittings, Flexible Hose, Hose Fittings, etc



207 Contents (3) Sections Adjustable Metal Shelving, Pipe Fittings, Elbows, etc



208 Contents (2) Shelves, Conduit Fittings, Pipe Fittings, Meters, etc



209 (7) Sections Adjustable Metal Shelving, (3) 24" X 72" X 96", (4)24" X 48" X 96"



210 Contents Room: (2) 36" X 72" Metal Framed Wood top Work Tables, Electronic Components, Chairs, 4-Drawer Metal File Cabinets, etc



IND-ATI Foil Huntsville, AL 4/22/2015

211 (3) Metal Bolt Bins, W/Contents, Misc Bolts, Nuts, Fasteners, Screws, etc



212 Cabinet W/Contents, Brass Hose Fittings, Metal Plugs, Pins, Cap Screws, etc



213 Screws, Bolts, Nuts, Washers, etc



214 (4) Parts Bin, W/Bearings



215 Section Pallet Racking, 48" X 96" X 96"



216 Metal 2-Door Storage Cabinet



217 Metal 2-Door Storage Cabinet, W/Contents, tips, etc



218 Metal 2-Door Storage Cabinet, W/Contents, Controllers, Drive Controllers, etc



219 Metal 2-Door Storage Cabinet, W/Contents, Various Size Bus Fuses



IND-ATI Foil Huntsville, AL 4/22/2015

220 Metal 2-Door Storage Cabinet, W/Contents, Rolls of Foil, Tape, etc



221 (2) Simplex 1017 Rail-Road Jacks



222 (2) Custom Built Pipe Rollers, Casters, C-Clamps, Vise Clamps, etc



223 Various Ridgid Pipe Dies, Ratchet, Die Handle



224 Metal 2-Door Storage Cabinet, W/ Light Ballast



225 Metal 2-Door Storage Cabinet, W/Contents, Misc Packing Tape, Pads, etc



226 Metal 2-Door Storage Cabinet, W/Contents, Utility Wipes, Grinder Wheels, etc



227 (2) Metal 2-Door Storage Cabinet, W/Bolt Bins, Misc Bolts, Nuts, Screws, etc



228 Metal 2-Door Storage Cabinet, W/Contents, Misc Electrical Supplies, etc



IND-ATI Foil Huntsville, AL 4/22/2015

229 Metal 2-Door Storage Cabinet, W/Contents, Digital Meters, Panel Meters, etc



230 Justrite Flammable Metal Storage Cabinet



231 Metal 2-Door Storage Cabinet, Spill Response Center, W/Contents, Rubber Boots, Suits, Filters, etc



232 Single Door Metal Storage Cabinet, W/Contents, First Aid Equipment



233 35" Steel Impeller, W/Shaft, Fan



234 US Motors Mdl BF59A 60hp 230/460 Volt, 3-Phase Electric Motor



235 (1) Electric Motor, 15hp, 5hp Electric Motor, W/Pump



236 JV Manufacturing Cramalot Mdl 60BD Compactor



IND-ATI Foil Huntsville, AL 4/22/2015

237 Square D Breakers, (12) from 300AMP - 700AMP



238 (16) Breakers from 150AMP - 800AMP



239 (6) Siemens and Square D Enclosure Safety Switches, Starters, etc



240 Contents (2) Pallets, Starter Boxes, Wire, Enclosure, Electric Panels, etc



241 Contents Pallet, Misc Conduit, PVC Fittings, Wire, etc



242 Contents (2) Pallets, Conduit Fittings, Belts, Wire, Weather Heads, etc



243 Contents (3) Pallets, Misc Electrical Fittings, Controls, Wire, Starters, etc



244 Contents (5) Pallets, Siemens Starter Boxes, Control Panels, etc



245 ABB 8300 Contact, Square D 2KVA Transformer, Siemens 400 AMP Circuit Breaker, GE High Break Circuit Breaker 1200 AMP



IND-ATI Foil Huntsville, AL 4/22/2015

246 Wire Reel, W/Misc Size Wire



247 Contents Pallet, Misc Size Electrical Wire



248 Contents Pallet, Misc Size Electrical Wire



249 (2) Spools Wire, 500' N12 ,2-Strand THHN Black 600 Volt Wire, 154' 500 MCM THHN Black Wire



250 725' 535 KCMIL 2KV DLOROHS Wire, (1) Small Roll 2000 Volt DLO 90C Wire



251 (3) Tables W/Contents, Hole Punches, Radio, Heater, Electrical Supplies, Battery Charger, etc



252 (3) Metal Framed Pressed Wood Top Tables 72"



253 (2) Boxes Arora Tech Wire Router



IND-ATI Foil Huntsville, AL 4/22/2015

254 Contents Pallet, Enclosures, Breakers, Conduit Fittings, etc



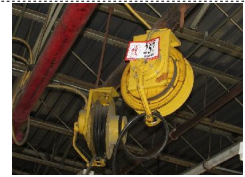
255 (2) Custom Built Wire Racks, 48" X 144" X 96"



256 (4) Sections 24" X 120" Skate Conveyor



257 (2) Pow-r-mite High Voltage Electric Reels, (2) Wall Mounted 24" Fans



258 (3) Double Pedestal Metal and Formica Desk, (2) Metal Custom Built Tables, Parts Bins, Shelf



259 Struers Roto Pol-21 Specimen Mover



260 Mettler Toledo Mdl T50 Titrator Plus Terminal, W/Mettler Toledo E20 Compact Titrator



261 Metrohm 795 KFT Titrino Titrator



262 Electronic Measurements Inc TRC Power Supply



IND-ATI Foil Huntsville, AL 4/22/2015

263 Thermolyne Type 6000 Electric Lab Furnace



264 Bartan Series 225 High Voltage Power Supply



265 Bartan Series 225 High Voltage Power Supply



266 Bartan Series 225 High Voltage Power Supply



267 Glass Lab, Glass Beakers, etc



268 (3) PVC Utility Sinks



269 KYQ-400 Hydraulic Crimping Tool



270 Alarm and Relay Monitor, Edwards Vacuum Gauge



271 (14) Omega CDCE-90X Series Conductivity Sensor



IND-ATI Foil Huntsville, AL 4/22/2015

272 (10) Omega Conductivity/resistivity Meters



273 (4) Quality Meter Pumps, Type LC03SA-PTC1-XXX



274 Hatch Ratio Turbidimeter Mdl 18900



275 Fluke Hydra-Dataloger



276 Techtronic 455 Aciloscope, Cepco Power Supply, HEWLET Packard DC Power Supply



277 Cepco Power Supply, PD Mdl 6150 Universal DC Power Source



278 Matsusada Mdl REC600V 1.6A Power Supply, Lambda Regulated Power Supply Mdl LB-706-FM



279 (3) HP Mdl 6448B DC Power Supply



IND-ATI Foil Huntsville, AL 4/22/2015

280 (3) 30" X 72" Work Tables, Metal Frame Wood Top



281 (3) 30" X 72" Work Tables, Metal Frame Wood Top



282 (4) 30" X 72" Work Tables, Metal Frame Wood Top



283 (2) 2-Door Metal Storage Cabinet



284 2-Door Metal Storage Cabinet, Metal Foreman Work Station



285 (2) Norgorn End Line Filters, Meters



286 (4) Pair Salisbury Lineman Gloves Class 3



287 Contents (2) Tables, Wire, Hose, PVC Fittings, Pipe, etc



288 Shop Vac, Brooms, Shovels, Mops, etc



IND-ATI Foil Huntsville, AL 4/22/2015

289 Snap Rings, Roll Pins, O-Rings



290 (2) Containers, Various Grinding Wheels



291 Rigging Strap, Metal Plate Clamps, etc



292 Contents (5) Pallets, Pipe Fittings, Electronic Valves, Work Lights, Pipe Hangers, etc



293 Contents (3) Pallets, Various Fire Extinguishers, Fire Hose, etc



294 Contents (4) Pallets, Pipe Insulation, Rolls Wire, PVC Mesh, Filters, etc



295 Contents of Roll, Dayton 1-Ton Electric Chain Fall Hoist, Filters, Scale, etc



296 (2) SS Containers, Scrap Copper, Wire, (2) Material Baskets



297 Contents (5) Pallets, Various Size Anti-fatigue Mats



IND-ATI Foil Huntsville, AL 4/22/2015

298 Various Uline Products, 55-Gallon Drum Dolly, Rolls Paper, Cardboard Edge Guards



299 Various Metal Cabinets, 4-Drawer File Cabinets, SS 2-Compartment Sink, (5) Pallets Various Valves, PVC Fittings, Parts, etc



300 Contents of Kitchen: Appliances, Refrigerator, Maytag Electric Range, Microwave Oven, etc



301 (16) Omega CEDCE-90-X Series Conductivity Sensors



302 Omega Micro Meter



303 Hannah Mdl HI8733 Conductivity Meter



304 (5) Accupet Pipette Meters



305 (4) Water Quality Testers



IND-ATI Foil Huntsville, AL 4/22/2015

306 (2) MSA Air Mask



307 Uline Safety Gloves, Mask, Goggles, Tape, Back Braces, etc



308 (3) Boxes Nalgene 150 Militer Analytical Filter Units



309 (10) Metal Framed Upholstered Stack Chairs, (7) Folding Chairs



310 48" Single Pedestal Pressed Wood Conference Table



311 (7) Upholstered Wood Framed Side Arm Chairs



312 Double Pedestal Desk, Credenza, (2) Bookshelves, (2) 2-Drawer File Cabinets



313 Epson Mdl WF-7520 All-N-One Printer/Fax/Scanner/Copier



314 Computer, Monitor, (2) Keyboards, Epson GT550 Printer



IND-ATI Foil Huntsville, AL 4/22/2015

315 Wooden Credenza, Wooden 2-Drawer Lateral File Cabinet, (3) Office Chairs



316 Security Monitor System, Monitors, Camera, Computer Switches, Etc



316A NSI Communications Server, Telephone System, W/Telephones



317 (3) 4-Drawer Metal File Cabinets, Pressed Wood Metal Frame Office Table



318 Steel Case, 4-Drawer File Cabinet



319 (3) Metal File Cabinets



320 (4) 4-Drawer Metal File Cabinets



321 (5) 2-Drawer Metal File Cabinets

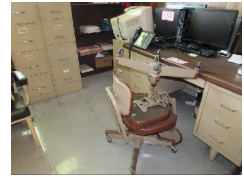


322 (2) Dell Desk Top Computer, (4) Monitor, (2) Keyboards, etc



IND-ATI Foil Huntsville, AL 4/22/2015

323 Remaining Contents of Office, (2) 4-Drawer Metal File Cabinet, 2-Drawer Metal File Cabinets, Wooden Bookshelf, (4) Office Chairs on Casters



324 (2) (New) Dell Desk Computers, Battery Backup, Monitor, etc



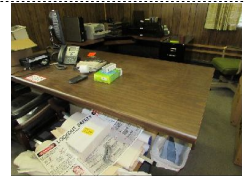
325 Dell Computer, Monitor, Keyboard, Mouse, Printer



326 (4) Desk Top CPU, Laser Jet 1012 Printer



327 Remaining contents, Double Pedestal Desk, Corner Work Station, 2-Drawer Metal File Cabinet, Misc Office Supplies



328 Misc Office Supplies



329 InterMac Easy Coder 4440 Bar Code Printer



330 (2) Overhead Projector, (2) Screens



IND-ATI Foil Huntsville, AL 4/22/2015

331 Remaining Contents of Office: Wooden Double Pedestal Desk, Metal and Pressed Wood Top Double Pedestal Desk, (2) 4-Drawer Metal File Cabinet, (2) Metal Bookshelves, 2-Door Storage Cabinet,



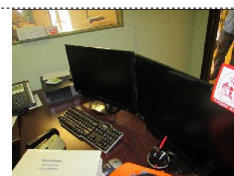
332 Dell OptiPlex 760 Desk-top Computer, Monitor, Keyboard, Mouse



333 Remaining Contents of Office: Metal Double Pedestal Desk, Bonded Leather High-back Executive Arm Chair on Casters, Metal Framed Pressed Wood Table



334 Dell OptiPlex 960 Computer, (2) Monitor, Keyboard, Mouse



335 Remaining Contents of Office: Pressed Wood Top Desk, 4-Drawer Metal File Cabinet, Office Arm Chair on Casters



336 (4) Marine Amplifiers, (4) Speakers



337 (3) Marine Amplifiers, (4) Speakers



338 Radio Shack 25 Watt Power Horn, Pyle Mdl PHSP5 8" Indoor/outdoor Horn Speaker



IND-ATI Foil Huntsville, AL 4/22/2015

339 (2) 2.4 MHz Cordless Telephones



340 6' Folding Table, Metal Framed Pressed Wood Top Office Work Table



341 (3) Metal Shop Carts

