

# INDEX

Unit/Torch comparison for Thermal Dynamics Cutting System	3	CEBORA	
PCH-10	4	Cebora P25/P30	33
PCH-25	4	Cebora P30/50	34
PCH-25/38	5	Cebora P36/P52/P70	35
PCH-26	5	Cebora P90/P120/P122/P150/P152	36/37
PCH/M-28	6	Cebora CP 160 - CP 200	38
PCH/M-35	7	Cebora circle cutting attachment	39
PCH/M-75	8	Central adaptor	40
PCH/M-76	9	Kit European standard	41
PCH/M-100XL	10	SAF	42
PCH/M-40	11		
PCH/M-60	12	HYPERTERM	
PCH/M-80	13		
PCH/M-120	14	HYPERTERM MAX-40 (PAC 140)	43
PCH/M-70	15	HYPERTERM MAX40CS /MAX42/MAX43)	44
PCH/M-140	16	HYPERTERM MAX-100 (PAC 130)	45
H-145	17	HYPERTERM MAX-100D (PAC 160)	46
PCM-145	18	HYPERTERM MAX 200	47
PCH/M-150	19	HYPERTERM HT-200	48
Maximizer 300 Merlin 1000	20	HYPERTERM HT-400	49
Maximizer 300 Merlin 3000, Merlin 6000	21	HYPERTERM HT-4001	50
Maximizer 300 Merlin 6000 GST	22	HYPERTERM HT-4001 PAC 620 /BEVELING	51
PCH-20	23	HYPERTERM PAC-500	52
PCH-30	23	HYPERTERM PAC-600	52
PCH-50	23		
PCH/M-100	24		
PCH/M-51	25		
PCH/M-52	26		
PCH-52P	27		
PCH/M-53	28		
PCH/M-4B(T)	29		
PCH/M-6B	30		
M-200	31		
Thermadyne circle cutting attachment	32		

On request:

Plasma parts for

BINZEL

ESAB

MESSER GRIESHEIM

SAFF

TRAFIMET

Laser cutting parts

AMADA

BYSTRONIC

ESAB

LVD

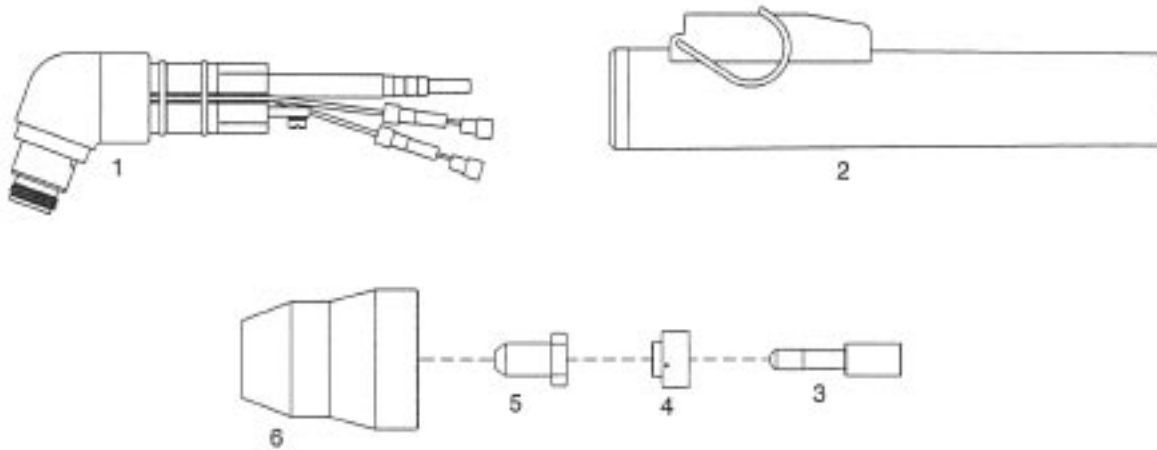
MESSER GRIESHEIM

TRUMPF

# UNIT/TORCH COMPARISON FOR THERMAL DYNAMICS CUTTING SYSTEMS

UNIT	TORCH	UNIT	TORCH
4Xi	PCH/M51	Pak- 1250XR	PCH/M52
6Xi	PCH/M51	Pak- 1250XR	PCH52P
CC-65	M-200	Pak- 15XC	PCH/M- 150
CC-66	M-200	Pak-15XC W/Max 300 retrofit	PCM/145
Cougar 125	PCH-10	Pak-2XT	PCH20
Cut Master 80XL	PCH/M75	Pak-3	PCH30
Drag-Gun	PCH-10	Pak-3XR	PCH/M51
Drag-Gun 38	PCH-25/38	Pak-44	PCH/M6B
Dynapak 110	PCH20	Pak-45	PCH/M6B
Econopak 100	PCH/M76	Pak-5	PCH50
Econopak 25	PCH-25	Pak-5 (Mech)	PCH/M4B(T)
Econopak 50	PCH-26	Pak-5XR Dual Gas	PCH/M52
Merlin 1000	Maximizer 300	Pak-5XT	PCH/M51
Merlin 3000	PCM/145	Pak-625XR	PCH/M75
Merlin 3000	Maximizer 300	Pak-625XR	PCH/M51
Merlin 6000	Maximizer 300	Pak-625XR Dual Gas	PCH/M52
Merlin 6000GST	Maximizer 300	Pak-6XR	PCH/M51
Pak Master 100	PCH53PPak	Pak-6XR Dual Gas	PCH/M52
Master 100	PCH/M53	Pak-750XR	PCH/M51
Pak Master IOOXL	PCH/MIOOXL	Pak-750XR Dual Gas	PCH/M52
Pak Master IOOXL Plus	PCH/M80	Pak-7XR	PCH/M51
Pak Master 150XL	PCH/M120	Pak-7XR Dual Gas	PCH/M52
Pak Master 25	PCH-25 Pak	Pak-8XR	PCH/M52
Master 38XL	PCH-25/38	Pak-Master 50XL	PCH/M-28
Pak Master 50XL Plus	PCH/M40	Pak Master 50	PCH/M35
Pak Master 75	PCH/M75	Stak Pak	PCH/M35
Pak Master 75XL	PCH/M75	Stak Pak	PCH/M70
Pak Master 75XL Plus	PCH/M60	Stak Pak	PCH/M140
Pak-10	PCH/M4B(T)	Stak Pak	PCH/M145
Pak-1000XR	PCH/M52	TA-500	M-200
Pak-10XR	PCH/M100	TAC-500	M-200
Pak- 10XR	PCH/M52	TD750	PCM/145
Pak-10XR (Mech)	PCH/M4B(T)		

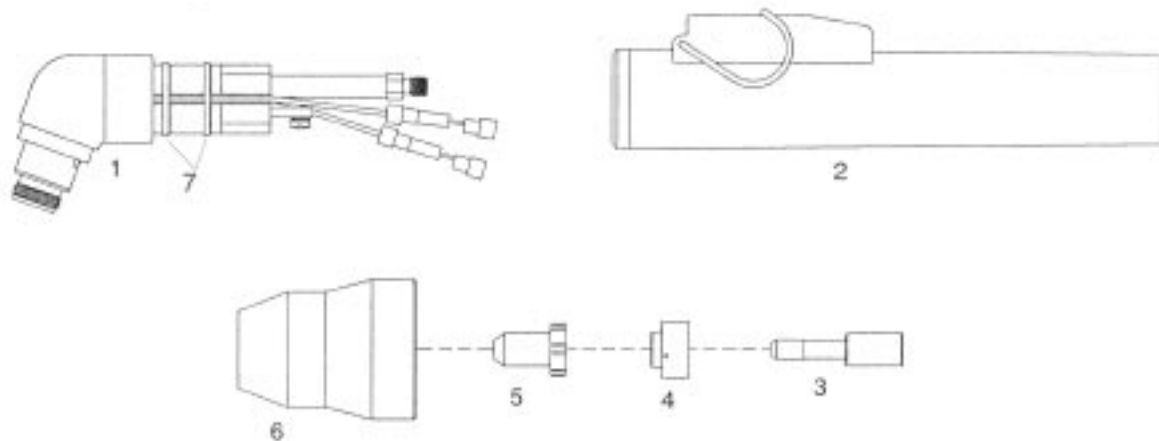
## PCH-10 Drag-Gun, Cougar 125



Item	Ref.	Code	Description
N/S	2-1020		Hand Torch complete 6 mtr cable
1	9-0016		Torch head 70°
2	9-0019E		Handgrip complete with microswitch
3	9-6006		Electrode- Hf
4	9-6007		Gas Distributor- VESPEL ®
5	9-6099		Tip - Air
6	9-6003		Shield Cup
N/S	4-6071E		Air and power cable 6 mtr

\* CIRCLECUTTING ATTACHMENT : See page # 32

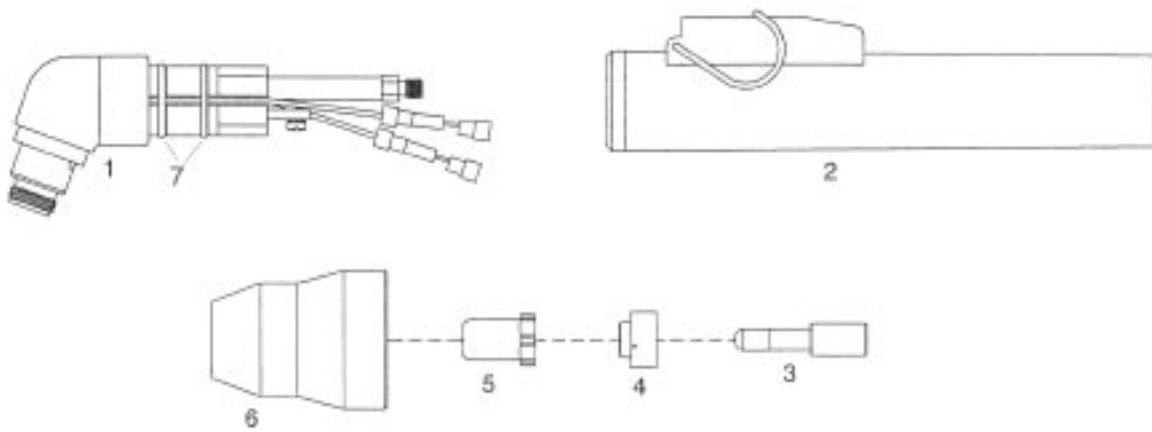
## PCH-25 Econopak 25, Pak Master 25



Item	Ref.	Code	Description
N/S	2-0250		Hand torch complete with 12.5' ( 4 mts ) cable
N/S	2-0251		Hand torch complete with 25' ( 7.5 mts ) cable
1	9-5807		70° Torch head
2	9-6282E		Handgrip complete with microswitch
3	9-6006		Electrode - Hf
4	9-6007		Gas Distributor- VESPEL ®
5	9-4476		Tip - Air
6	9-6003		Shield Cup
7	8-0533		O-ring
N/S	4-6067		Air and power cable 12.5' ( 4 mts ) - Hand torch
N/S	4-6068		Air and power cable 25' ( 7.5 mts ) - Hand torch

\* CIRCLE CUTTING ATTACHMENT : See page # 32

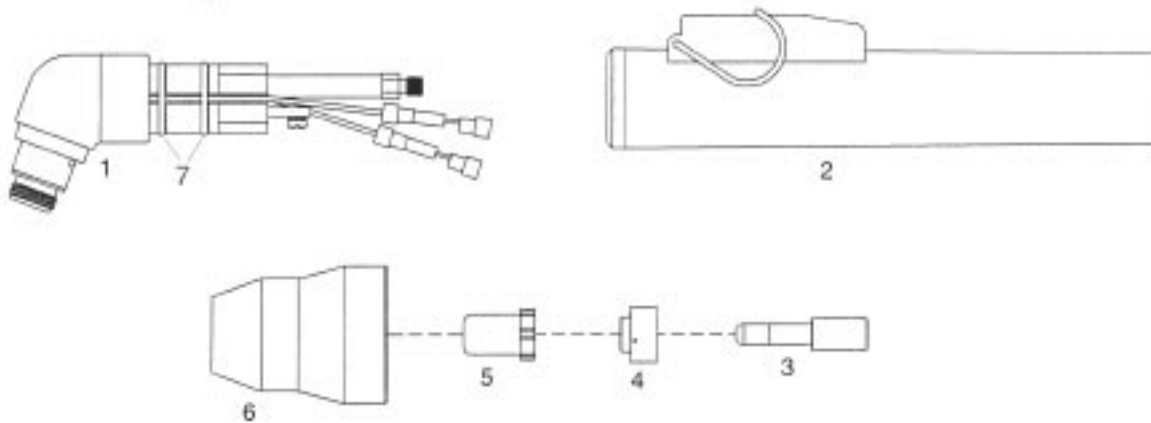
**PCH-25/38 Pak Master 38XL, Drag-Gun 38**



Item	Ref.	Code	Description
N/S	2-0380		Hand torch complete with 12,5' ( 4 mts )
N/S	2-0381		Hand torch complete with 25' ( 7.5 mts )
1	9-5807		70° Torch head
2	9-6282E		Handgrip complete with microswitch
3	9-6506		Electrode - Hf
4	9-6507		Gas Distributor - VESPEL ®
5	9-6501		Tip- Air
6	9-6003		Shield Cup
7	8-0533		O-ring
N/S	4-6067		Air and power cable 12.5' ( 4 mts ) - Hand torch
N/S	4-6068		Air and power cable 25' ( 7.5 mts ) - Hand torch

\* CIRCLECUTTING ATTACHMENT : See page # 32

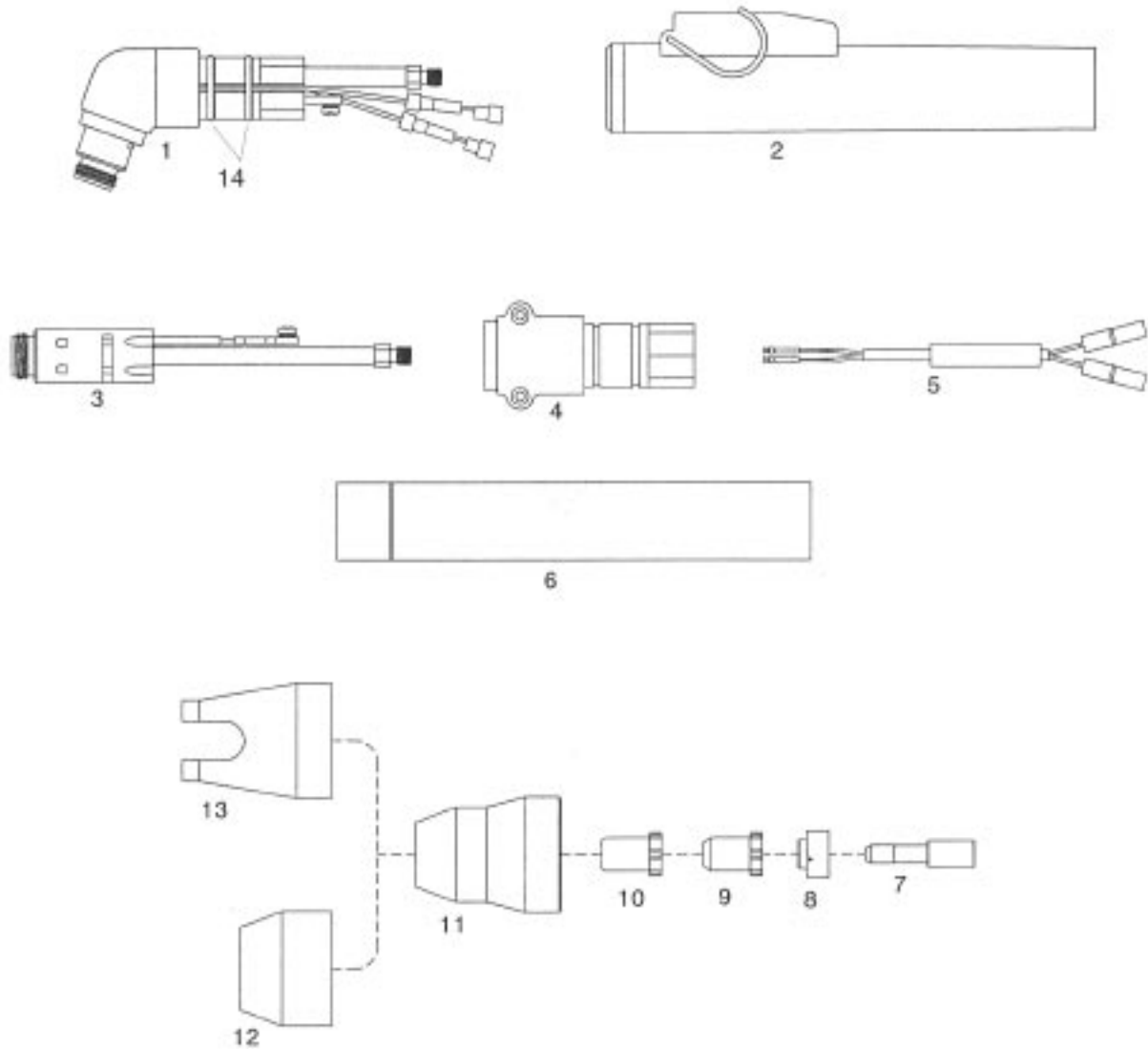
**PCH-26 Econopak 50**



Item	Ref.	Code	Description
N/S	2-3501		Hand torch complete with 12,5' ( 4 mts )
N/S	2-3511		Hand torch complete with 25' ( 7.5 mts )
1	9-5807		70° Torch head
2	9-6282E		Handgrip complete with microswitch
3	9-6506		Electrode- Hf
4	9-6507		Gas Distributor - VESPEL ®
5	9-6501		Tip - Air
6	9-6003		Shield Cup
7	8-0533		O-ring
N/S	4-6071		Air and power cable 12.5' ( 4 mts ) - Hand torch
N/S	4-6072		Air and power cable 25' ( 7.5 mts ) - Hand torch

\* CIRCLECUTTING ATTACHMENT : See page#32

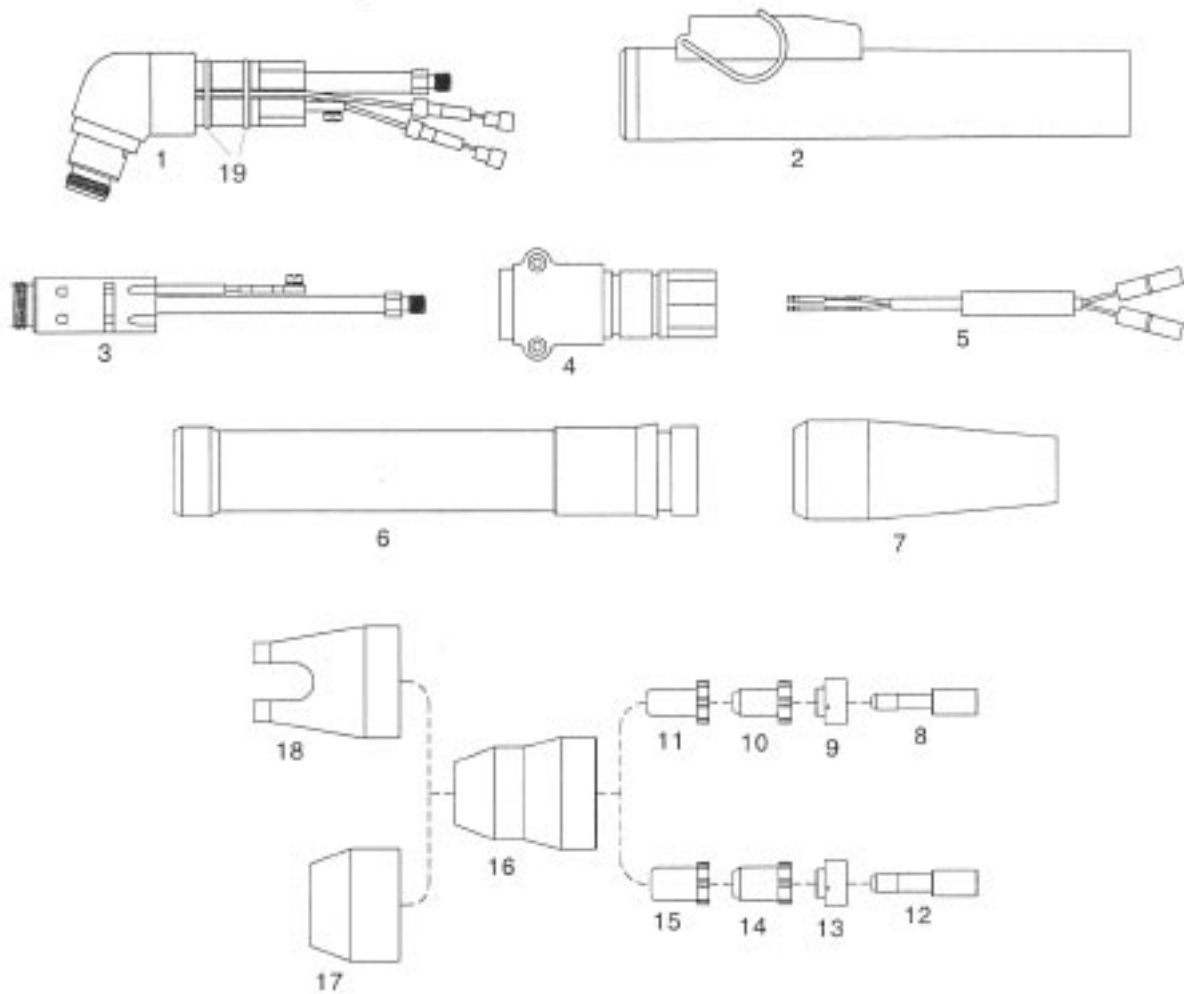
**PCH/M-28 Pak Master 50XL**



Item	Ref.	Code	Description
N/S	2-5801		Hand torch complete with 25' ( 7.5 mts ) cable
N/S	2-5802		Hand torch complete with 50' ( 15 mts ) cable
1	9-5807		70° Torch head
2	9-6291E		Handgrip complete with microswitch
3	9-5809		180° Torch head
4	9-6261		180° Torch Shell
5	9-4531		Pip wire assembly
6	9-5636		Machine Handle
7	9-6506		Electrode - Hf (long life)
8	9-6507		Gas Distributor - VESPEL® (long life)
9	9-6500		Tip - Standoff (long life)
10	9-6501		Tip - Drag (long life)
11	9-6003		Shield Cup - Std
12	9-6503		Shield Cup - Maximum Life (requires 9-6003)
13	9-6004		Shield Cup - Crown (requires 9-6003)
14	8-0533		O-ring
N/S	4-2995		Air and power cable 25' ( 7.5 mts ) - Hand torch
N/S	4-2996		Air and power cable 50' ( 15 mts ) - Hand torch

\* CIRCLECUTTINGATTACHMENT : See page#32

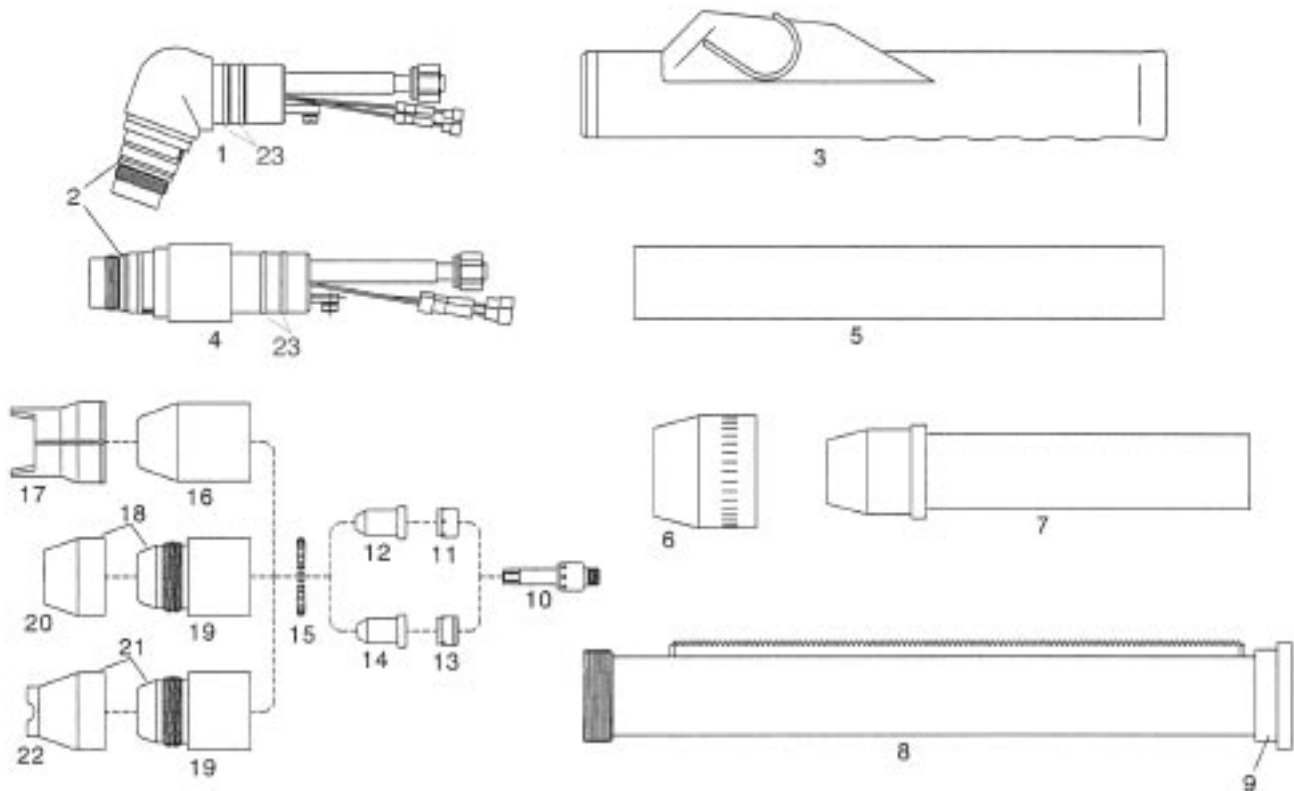
**PCH/M-35 Pak Master 50, Stak Pak**



Item	Ref.	Code	Description
N/S	2-5001		Hand torch complete with 25' ( 7.5 mts ) cable
N/S	2-5002		Hand torch complete with 50' ( 15 mts ) cable
1	9-5807		70° Torch head
2	8-4305E		Handgrip complete with microswitch
3	9-5809		180° Torch head
4	9-6261		180° Torch Shell
5	9-4531		Pip wire assembly
6	9-4522		Positioning Tube Assembly
7	8-4304		Boot
8	9-6006		Electrode - Hf
9	9-6007		Gas Distributor- VESPEL®
10	9-6000		Tip - 35 Amp. Air
	9-6002		Tip - Gouging - Groove Air
11	9-6001		Tip - Drag Cut Air
12	9-6506		Electrode - Hf (long life)
13	9-6507		Gas Distributor - VESPEL® (long life)
14	9-6500		Tip - Standoff (long life)
15	9-6501		Tip - Drag (long life)
16	9-6003		Shield Cup - Std
17	9-6503		Shield Cup - Maximum Life (requires 9-6003)
18	9-6004		Shield Cup - Crown (requires 9-6003)
19	8-0533		O-ring
N/S	4-6034		Air and power cable 25' ( 7.5 mts ) - Hand torch
N/S	4-6035		Air and power cable 50 ( 15 mts )- Hand torch

\* CIRCLECUTTINGATTACHMENT : See page#32

**PCH/M-75 Pak Master 75, Pak Master 75XL, 625XR, Cut Master 80XL**

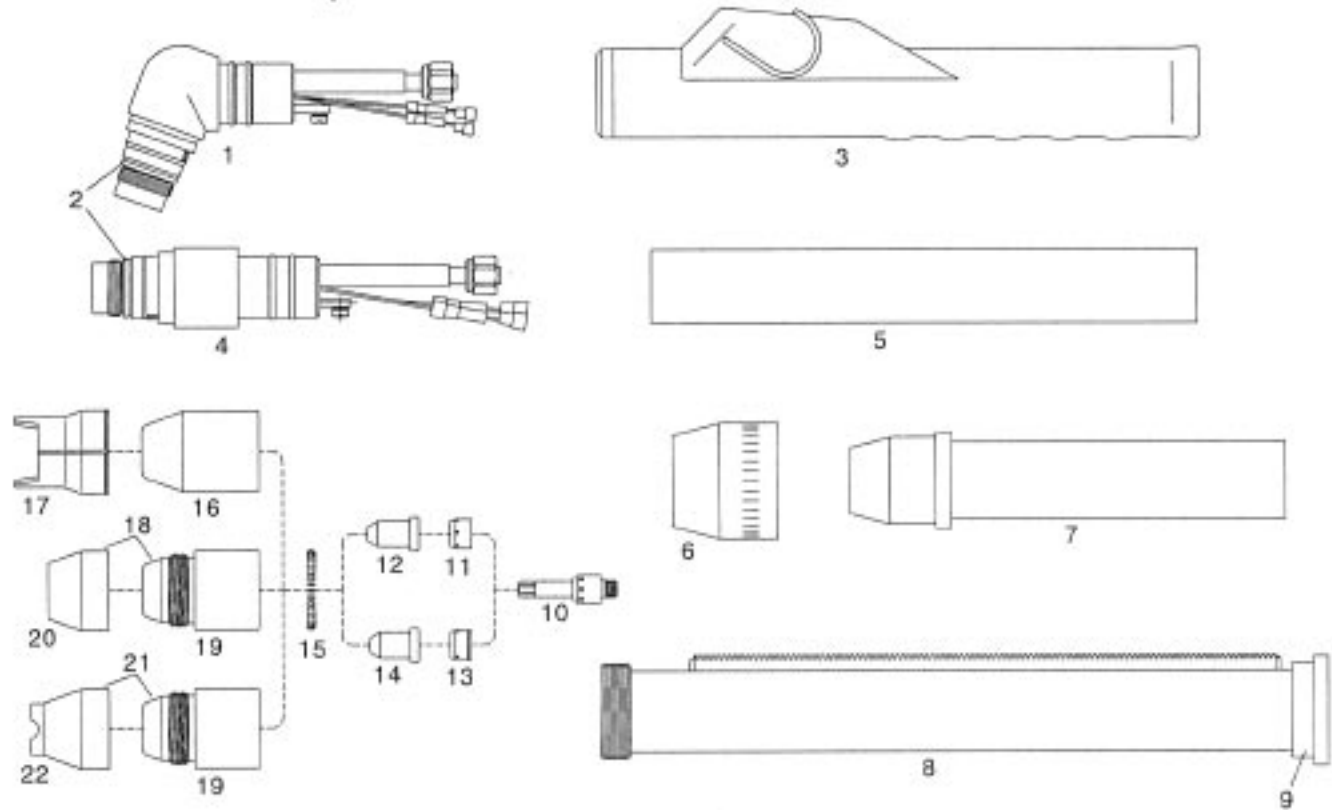


Item	Ref.	Code	Description
N/S	2-7801		Hand torch complete with 25' ( 7.5 mts ) cable
N/S	2-7802		Hand torch complete with 50' ( 15 mts ) cable
N/S	2-7805		Machine torch complete with 25' ( 7.5 mts ) cable
N/S	2-7806		Machine torch complete with 50' ( 15 mts ) cable
1	8-7510		70° Torch Head
2	8-0532		O-Ring ( 20 pcs. )
3	9-5636E		Handgrip complete with microswitch ( incl. 9-5636, 9-7502, 8-1322 )
4	8-7512		180° Torch Head
5	9-5637E		Machine handle
6	8-4018		Nut
7	9-5637		Adaptor
8	8-5005		Positioning tube
9	8-4204		End Cap
10	8-7502		Electrode, long life, ( Pat. Pending )
11	8-7501		Gas distributor, cutting - VESPEL
12	8-7503		Tip, cutting 35A - $\varnothing$ 0,99 - .039
	8-7504		Tip, cutting 55A - $\varnothing$ 1,17 - .046
13	8-7508		Gas distributor, gouging - VESPEL®
14	8-7506		Tip, Gouging - $\varnothing$ 1,86 - .073
15	9-7501E		Coil spring ( 10 pcs. )
16	8-7500		Shield cup
17	8-7575		Double pointed spacer
18	8-7496		Shield cup maximum life, complete
19	8-7498		Shield cup body
20	8-7497		Heat shield ( copper )
21	8-7507		Crown shield cup assembly
22	8-7499		Crown cup shield ( copper )
23	8-0533		O-ring
N/S	4-7800		Air and power cable 25' ( 7.5 mts ) - Hand torch
N/S	4-7801		Air and power cable 50' ( 15 mts ) - Hand torch
N/S	4-7802		Air and power cable 25' ( 7.5 mts ) - Machine torch
N/S	4-7803		Air and power cable 50' ( 15 mts ) - Machine torch

\* CIRCLECUTTINGATTACHMENT : See page#32



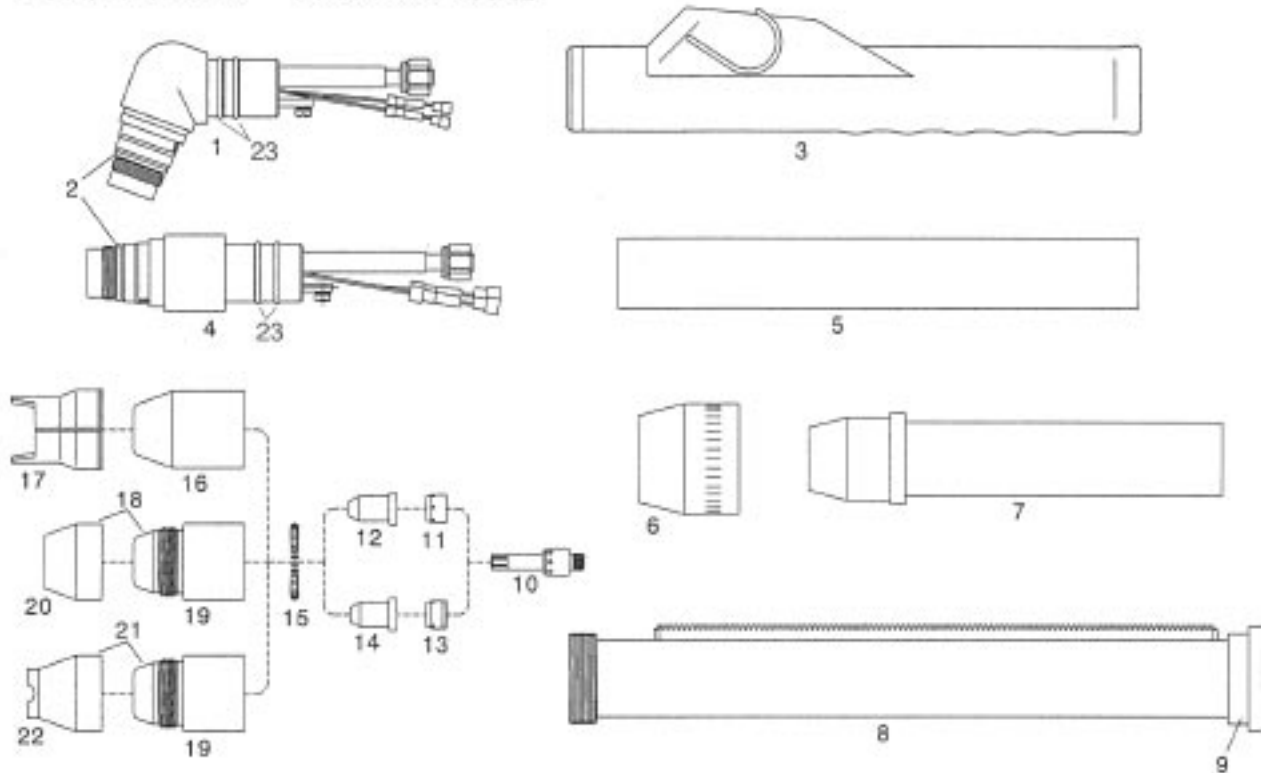
**PCH/M-76 Econopak 100**



Item	Ref.	Code	Description
N/S	2-7811		Hand torch complete with 25' ( 7.5 mts ) cable
N/S	2-7812		Hand torch complete with 50' ( 15 mts ) cable
N/S	2-7613		Machine torch complete with 25' ( 7.5 mts ) cable
N/S	2-7614		Machine torch complete with 50' ( 15 mts ) cable
1	8-7510		70° Torch Head
2	8-0532		O-Ring ( 20 pcs. )
3	9-5636E		Handgrip complete with microswitch ( incl. 9-5636, 9-7502, 8-1322 )
4	8-7512		180° Torch Head
5	9-5637E		Machine handle
6	8-4018		Nut
7	9-5637		Adaptor
8	8-5005		Positioning tube
9	8-4204		End Cap
10	8-7502		Electrode, long life, ( Pat. Pending )
11	8-7501		Gas distributor, cutting - VESPEL
12	8-7503		Tip, cutting 35A - 0 0,99 - .039
	8-7505		Tip, cutting 60A - 0 1,32 - .052
13	8-7508		Gas distributor, gouging - VESPEL
14	8-7506		Tip, Gouging - 0 1,86 - .073
15	9-7501E		Coil spring ( 10 pcs. )
16	8-7500		Shield cup
17	8-7575		Double pointed spacer
18	8-7496		Shield cup maximum life, complete
19	8-7498		Shield cup body
20	8-7497		Heat shield ( copper )
21	8-7507		Crown shield cup assembly
22	8-7499		Crown cup shield ( copper )
N/S	4-7611		Air and power cable 25' ( 7.5 mts ) - Hand torch
N/S	4-7612		Air and power cable 50' ( 15 mts ) - Hand torch
N/S		07083	Air and power cable '~5' ( 7.5 mts ) - Machine torch
N/S		07093	Air and power cable 50' ( 15 mts ) - Machine torch

\* CIRCLECUTTING ATTACHMENT : See page # 32

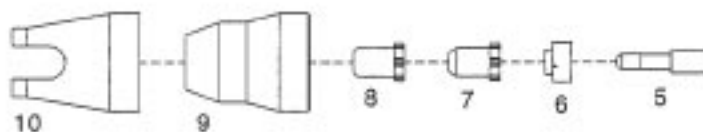
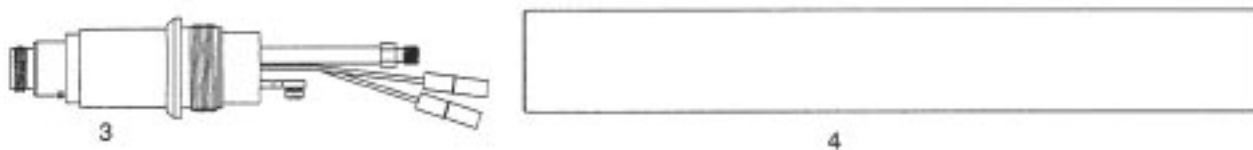
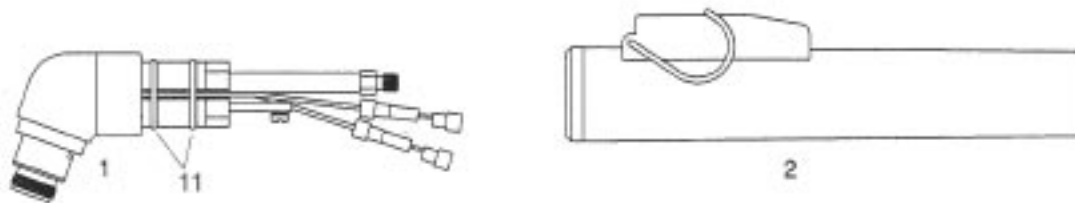
**PCH/M-100XL Pak Master 100XL**



Item	Ref.	Code	Description
N/S	2-0801		Hand torch complete with 25' ( 7.5 mts ) cable
N/S	2-0802		Hand torch complete with 50' ( 15 mts ) cable
N/S	2-0805		Machine torch complete with 25' ( 7.5 mts ) cable
N/S	2-0806		Machine torch complete with 50' ( 15 mts ) cable
1	8-7510		70° Torch Head
2	8-0532		O-Ring ( 20 pcs. )
3	9-5636E		Handgrip complete with microswitch ( incl. 9-5636, 9-7502, 8-1322 )
4	8-7512		180° Torch Head
5	9-5637E		Machine handle
6	8-4018		Nut
7	9-5637		Adaptor
8	8-5005		Positioning tube
9	8-4204		End Cap
10	8-7502		Electrode, long life, ( Pat. Pending )
11	8-7501		Gas distributor, cutting - VESPEL ®
12	8-7503		Tip, cutting 35A - ø 0,99 - .039
	8-7504		Tip, cutting 55A - ø 1,17 - .046
	8-7505		Tip, cutting 70A - ø 1,32 - .052
13	8-7508		Gas distributor, gouging - VESPEL ®
14	8-7506		Tip, Gouging - ø 1,86 - .073
15	9-7501E		Coil spring ( 10 pcs. )
16	8-7500		Shield cup
17	8-7575		Double pointed spacer
18	8-7496		Shield cup maximum life, complete
19	8-7498		Shield cup body
20	8-7497		Heat shield ( copper )
21	8-7507		Crown shield cup assembly
22	8-7499		Crown cup shield ( copper )
23	8-0533		O-ring
N/S	4-0810		Air and power cable 25' ( 7.5 mts ) - Hand torch
N/S	4-0811		Air and power cable 50' ( 15 mts ) - Hand torch
N/S	4-0812		Air and power cable 25' ( 7.5 mts ) - Machine torch
N/S	4-0813		Air and power cable 50' ( 15 mts ) - Machine torch

\* CIRCLECUTTING ATTACHMENT : See page # 32

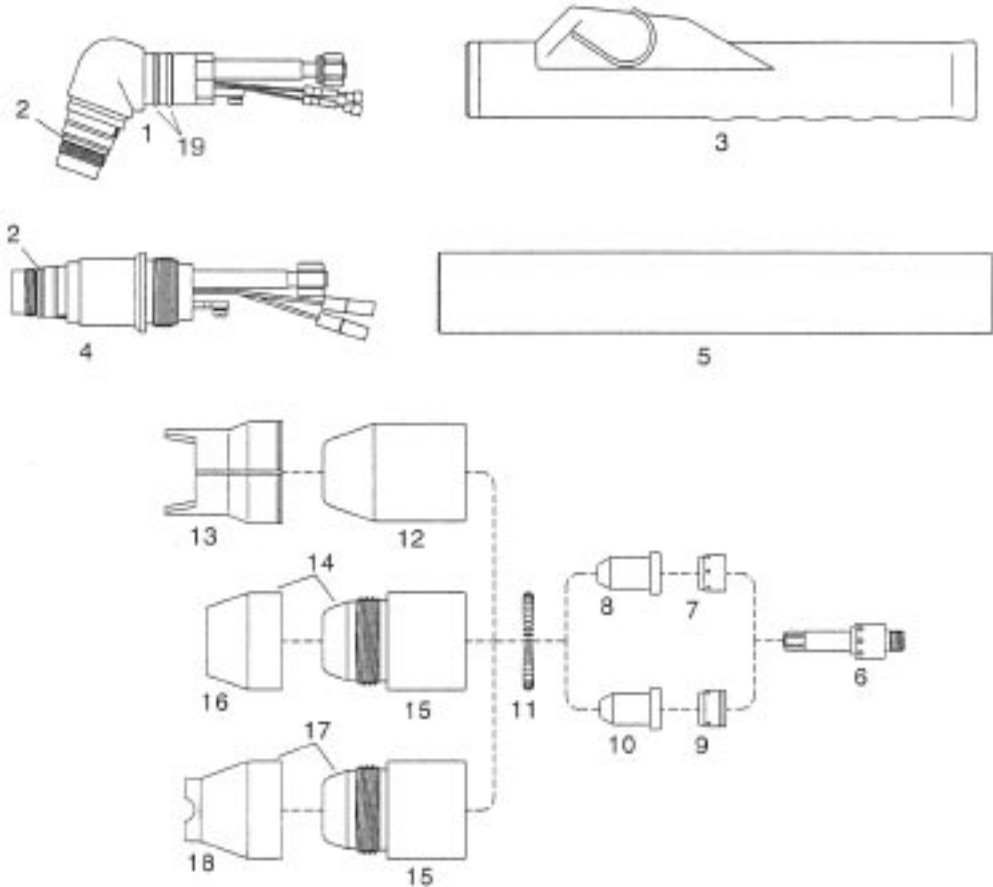
**PCH/M-40 Pak Master 50XL Plus**



Item	Ref.	Code	Description
N/S	2-5035		Hand torch complete with 25' ( 7.5 mts ) cable
N/S	2-5036		Hand torch complete with 50' ( 15 mts ) cable
N/S	2-5039		Machine torch complete with 25' ( 7.5 mts ) cable
N/S	2-5040		Machine torch complete with 50' ( 15 mts ) cable
1	9-8055		70° Torch head
2	9-8059		Handgrip complete with microswitch
3	9-8053		180° Torch head
4	9-7833		Machine handle
5	9-6506		Electrode - Hf (long life)
6	9-6507		Gas Distributor - VESPEL® (long life)
7	9-6500		Tip - Standoff (long life)
8	9-6501		Tip - Drag (long life)
	9-6502		Tip - Gouging
9	9-6003		Shield Cup - Std
10	9-6004		Shield Cup - Crown (requires 9-6003)
11	8-0533		O-ring
N/S	4-0815		Air and power cable 25' ( 7.5 mts ) - Hand torch
N/S	4-0816		Air and power cable 50' ( 15 mts ) - Hand torch
N/S	4-2897		Air and power cable 25' ( 7.5 mts ) - Machine torch
N/S	4-2898		Air and power cable 50' ( 15 mts ) - Machine torch

\* CIRCLECUTTING ATTACHMENT : See page # 32

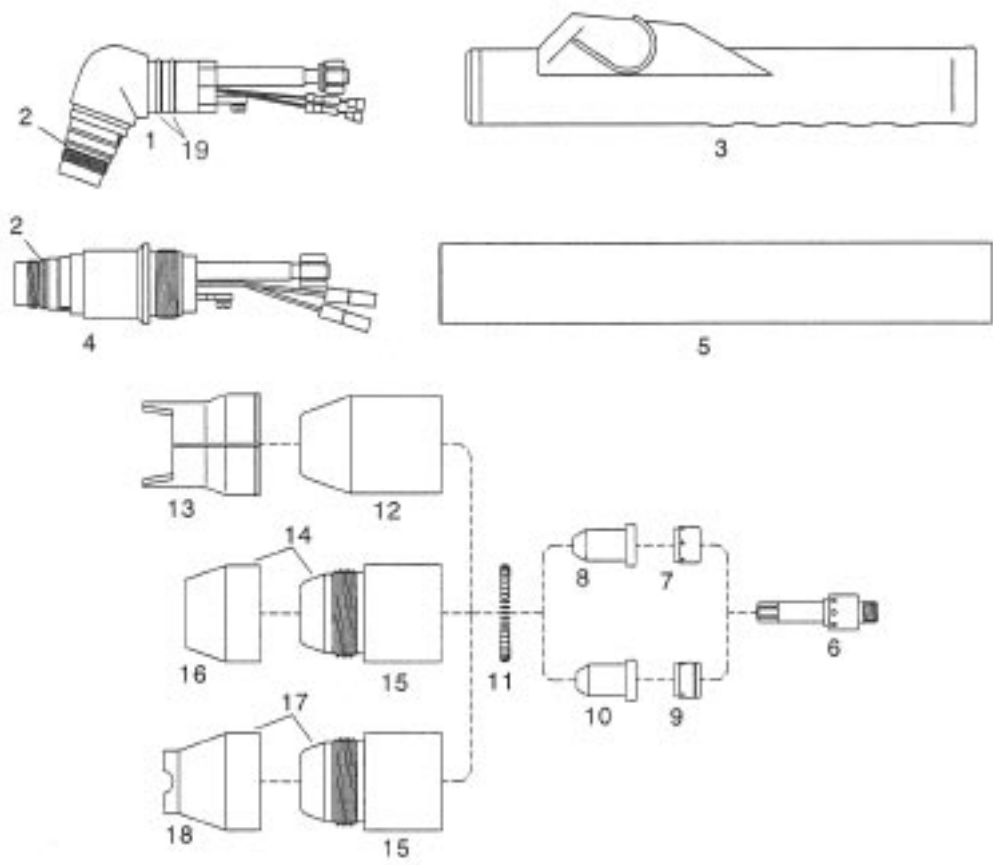
**PCH/M-60 Pak Master 75XL Plus**



Item	Ref.	Code	Description
N/S	2-6660		Hand torch complete with 25' ( 7.5 mts ) cable
N/S	2-6661		Hand torch complete with 50' ( 15 mts ) cable
N/S	2-6664		Machine torch complete with 25' ( 7.5 mts ) cable
N/S	2-6665		Machine torch complete with 50' ( 15 mts ) cable
1	9-8075		70° Torch Head
2	8-0532		O-Ring ( 20 pcs. )
3	9-8066		Handgrip complete with microswitch
4	9-8073		180° Torch Head
5	9-7833		Machine handle
6	8-7502		Electrode, long life, ( Pat. Pending )
7	8-7501		Gas distributor, cutting - VESPEL ®
8	8-7503		Tip, cutting 35A - ø 0,99 - .039
	9-7726		Tip, cutting 60A - ø 1,24 - .049
9	8-7508		Gas distributor, gouging - VESPEL ®
10	8-7506		Tip, Gouging - ø 1,86 - .073
11	9-7501E		Coil spring ( 10 pcs. )
12	8-7500		Shield cup
13	8-7575		Double pointed spacer
14	8-7496		Shield cup maximum life, complete
15	8-7498		Shield cup body
16	8-7497		Heat shield ( copper )
17	8-7507		Crown shield cup assembly
18	8-7499		Crown cup shield ( copper )
1p	8-0533		O-ring
N/S	4-0819		Air and power cable 25' ( 7.5 mts ) - Hand torch
N/S	4-0820		Air and power cable 50' ( 15 mts ) - Hand torch
N/S	4-7502		Air and power cable 25' ( 7.5 mts ) - Machine torch
N/S	4-7503		Air and power cable 50' ( 15 mts ) - Machine torch

\* CIRCLECUTTING ATTACHMENT : See page # 32

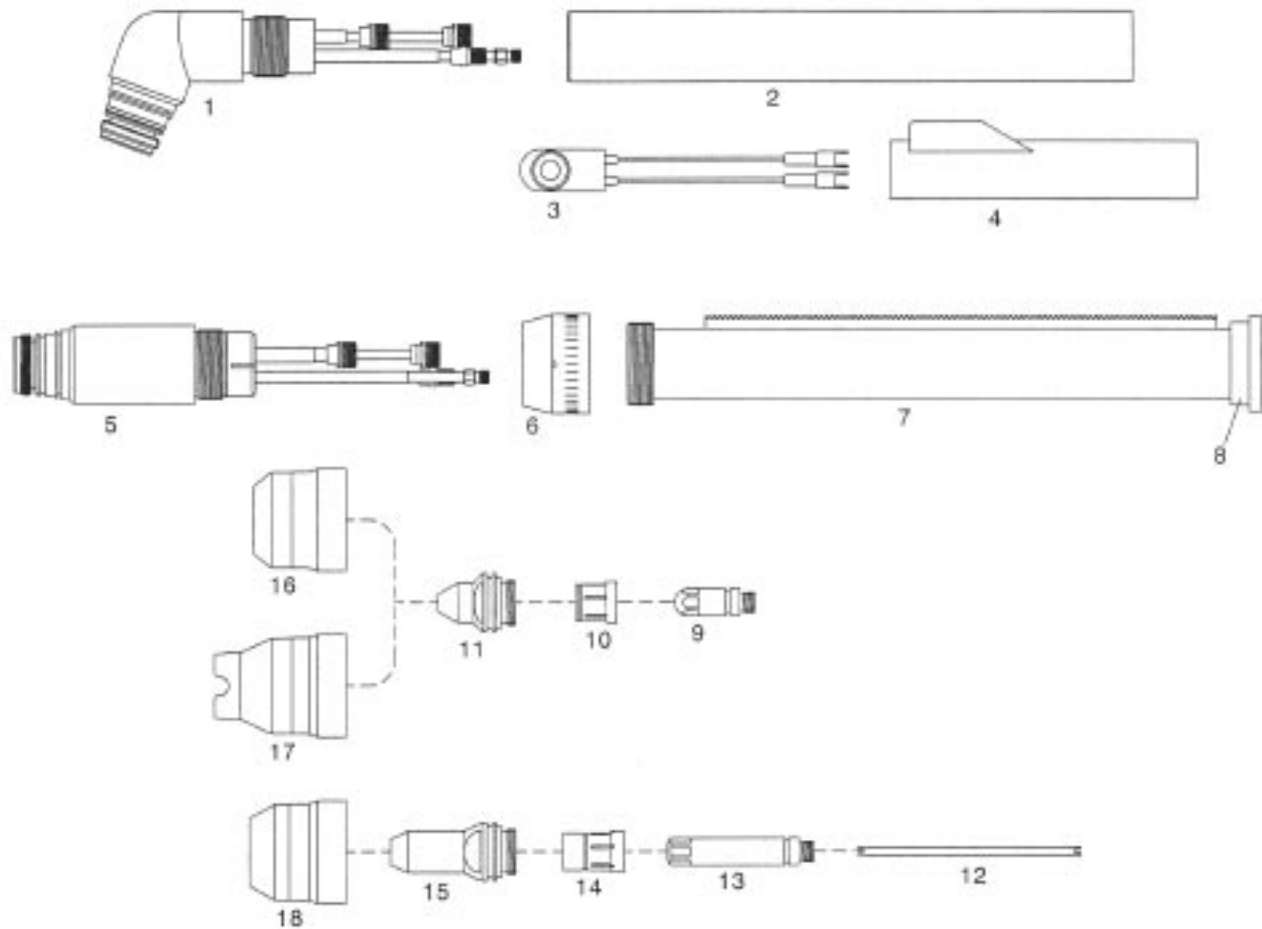
**PCH/M-80 Pak Master 100XL Plus**



Item	Ref.	Code	Description
N/S	2-0080		Hand torch complete with 25' ( 7.5 mts ) cable
N/S	2-0081		Hand torch complete with 50' ( 15 mts ) cable
N/S	2-0084		Machine torch complete with 25' ( 7.5 mts ) cable
N/S	2-0085		Machine torch complete with 50' ( 15 mts ) cable
1	9-8075		70° Torch Head
2	8-0532		O-Ring ( 20 pcs. )
3	9-8066		Handgrip complete with microswitch
4	9-8073		180° Torch Head
5	9-7833		Machine handle
6	8-7502		Electrode, long life, ( Pat. Pending )
7	8-7501		Gas distributor, cutting - VESPEL®
8	8-7503		Tip, cutting 35A - ø 0,99 - .039
	8-7504		Tip, cutting 55A - ø 1,17 - .046
	9-7728		Tip, cutting 80A - ø 1,39 - .055
9	8-7508		Gas distributor, gouging - VESPEL®
10	8-7506		Tip, Gouging - ø 1,86 - .073
11			Coil spring ( 10 pcs. )
12	8-7500		Shield cup
13	8-7575		Double pointed spacer
14	8-7496		Shield cup maximum life, complete
15	8-7498		Shield cup body
16	8-7497		Heat shield ( copper )
17	8-7507		Crown shield cup assembly
18	8-7499		Crown cup shield ( copper )
19	8-0533		O-ring
N/S	4-0823		Air and power cable 25' ( 7.5 mts ) - Hand torch
N/S	4-0824		Air and power cable 50' ( 15 mts ) - Hand torch
N/S	4-0012		Air and power cable 25' ( 7.5 mts ) - Machine torch
N/S	4-0013		Air and power cable 50' ( 15 mts ) - Machine torch

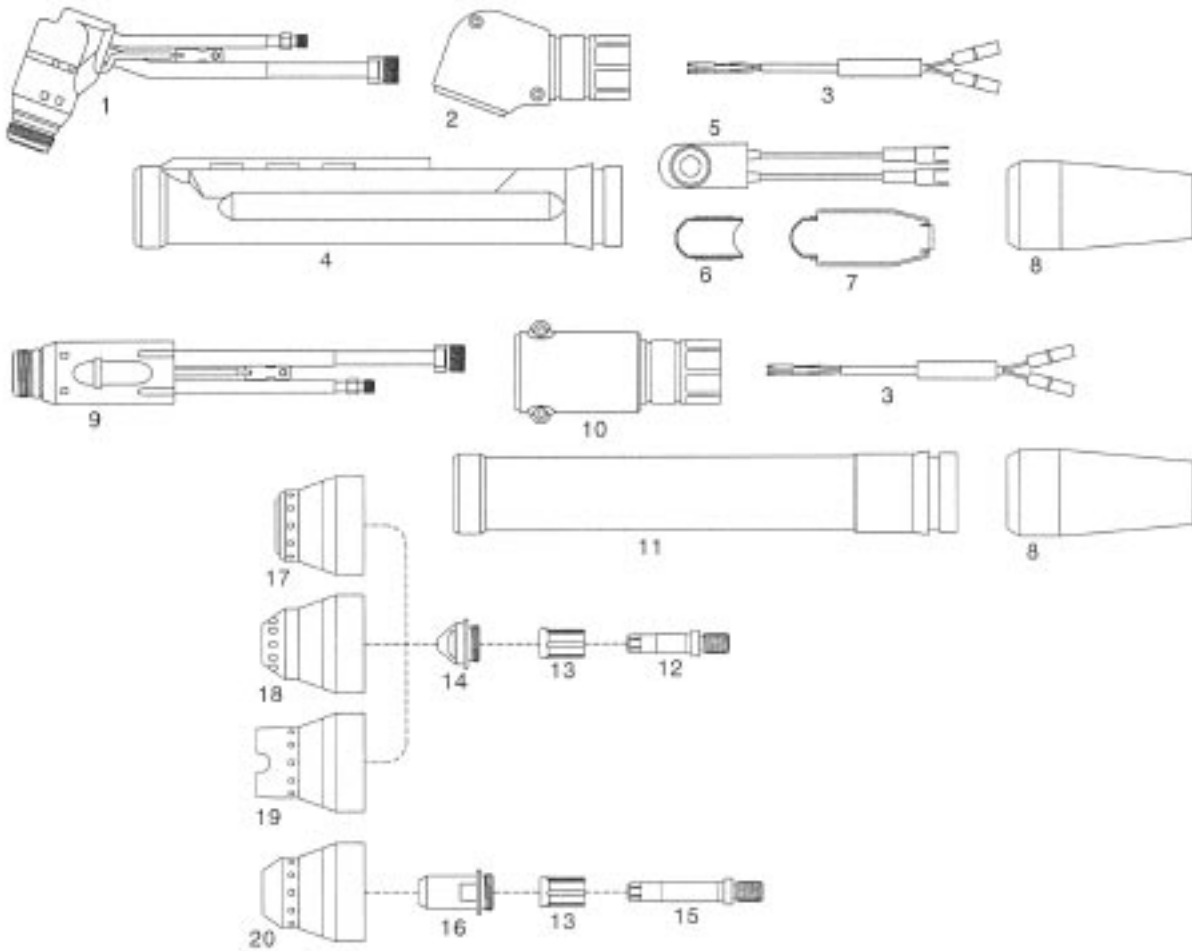
\* CIRCLE CUTTING ATTACHMENT : See page # 32

**PCH/M-120 Pak Master 150XL**



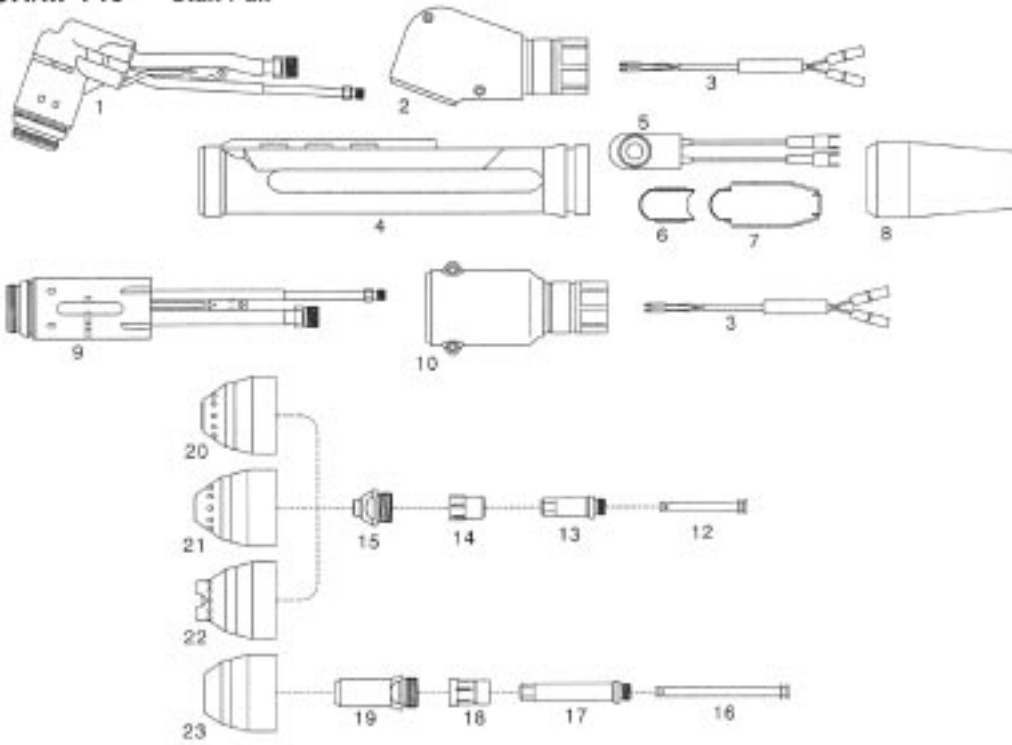
Item	Ref.	Code	Description
1	9-7830		70° Torch Head
N/S	9-7831		90° Torch Head
2	9-7833		Handle
3	9-1246		Switch
4	8-4216		Switch Sheath
5	9-6410		180° Torch Head
6	8-2158		Adaptor
7	7-3207		Positioning tube
8	8-4204		End cap
9	20-1210		Electrode Air - Cutting
	20-1211		Electrode Multi Gas - Cutting
10	20-1215		Gas Distributor- Cutting
11	20-1220		Tip 35A
	20-1221		Tip 70A
	20-1222		Tip 120A
12	20-1402		Coolant Tube extension - Gouging
13	20-1404		Electrode Air/N2 - Gouging
	20-1405		Electrode Ar/H2 - Gouging
14	20-1409		Gas Distributor- Gouging
15	20-1412		Tip .110 - Gouging
	20-1413		Tip .125 - Gouging
	20-1414		Tip .156 - Gouging
	20-1415		Tip .171 - Gouging
16	20-1225		Shield Cup - Std.
17	20-1226		Shield Cup - Crown
18	20-1227		Shield Cup - Gouging
19	8-0533		O-ring

**PCH/M-70 Stak Pak**



Item	Ref.	Code	Description
1	9-5810		70° Torch Head
2	9-6266		70° Torch Shell
N/S	9-5811		90° Torch Head
N/S	9-6264		90° Torch Shell
3	9-6162		Pip wire assembly
4	8-4309		Torch Handle
5	9- 1246		Switch
6	8-4302		Insert
7	8-4303		Closure
8	8-4308		Boot
9	9-5812		180° Torch Head
10	9-6265		180° Torch Shell
11	7-3270		Mounting tube
12	9-6019		Electrode - Cutting, Air/N2/O2
	9-6021		Electrode - Cutting, Ar/H2
13	9-6022		Gas Distributor
14	9-6008		Tip - Cutting 35A Air/N2/O2
	9-6009		Tip - Cutting 70A Air/N2/O2
	9-6013		Tip - Cutting 70A Ar/H2
15	9-6107		Electrode - Gouging, Air/N2/O2
	9-6108		Electrode - Gouging, Ar/H2
16	9-6014		Tip - Gouging .089
	9-6015		Tip - Gouging .104
	9-6109		Tip- Gouging .125
17	9-6016		Shield Cup - Standoff - Std.
18	9-6024		Shield Cup - Standoff - Long
19	9-6017		Shield Cup - Crown
20	9-6018		Shield Cup - Gouging

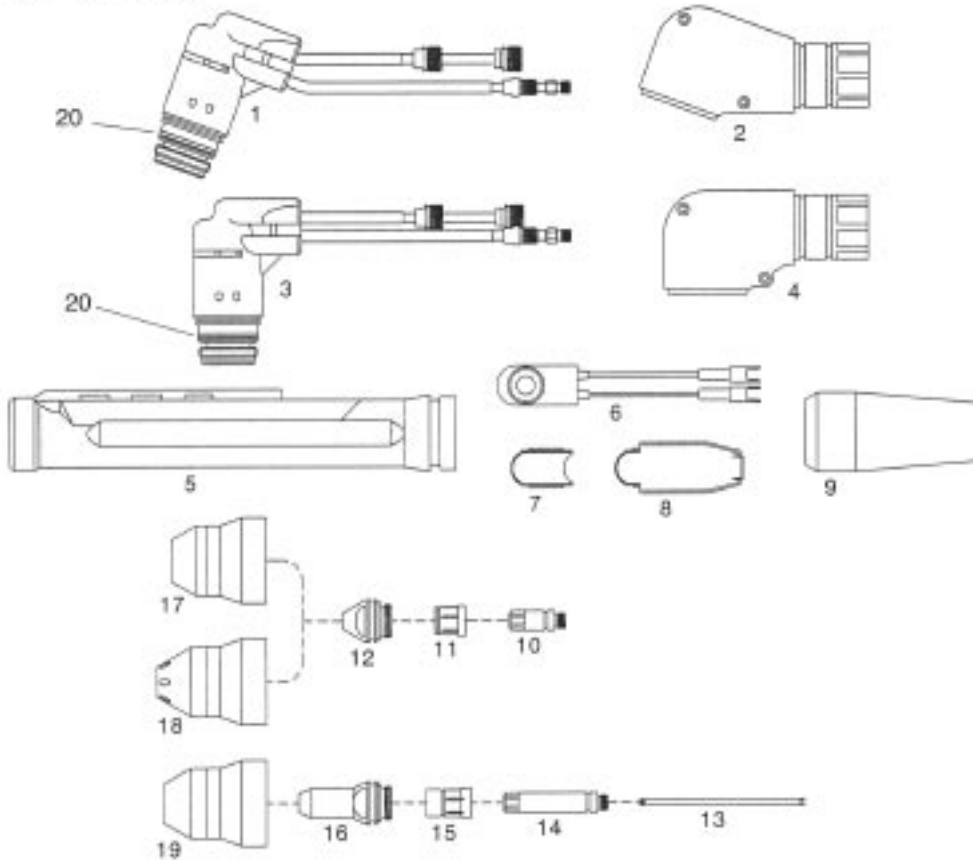
**PCH/M-140 Stak Pak**



Item	Ref.	Code	Description
1	9-5813		70° Torch Head
2	9-5826		70° Torch Shell
N/S	9-5814		90° Torch Head
N/S	9-5827		90° Torch Shell
3	9-4532		Pip Wire Assembly
4	8-4312		Torch E handle
5	9-1246		Switch
6	8-4302		Insert
7	8-4303		Closure
8	8-4311		Boot
9	9-5815		180° Torch Head
10	9-5828		180° Torch Shell
12	9-6052		Cooling Tube - Cutting
13	9-6048		Electrode - Cutting, Air/N2/O2
	9-6050		Electrode - Cutting Ar/H2
14	9-6051		Gas Distributor - Cutting
15	9-6025		Tip - Cutting 35A Air/N2
	9-6026		Tip - Cutting 70A Air/N2
	9-6027		Tip - Cutting 105A Air/N2
	9-6028		Tip - Cutting 140A Air/N2
	9-6034		Tip - Cutting 70A Ar/H2
	9-6035		Tip - Cutting 105A Ar/H2
	9-6036		Tip - Cutting 140A Ar/H2
16	9-6113		Cooling Tube - Gouging
17	9-6110		Electrode - Gouging, Air/N2/O2
	9-6111		Electrode - Gouging, Ar/H2
18	9-6112		Gas Distributor - Gouging
19	9-6037		Tip - Gouging .110
	9-6038		Tip - Gouging .125
	9-6039		Tip - Gouging .156
	9-6040		Tip - Gouging .171
20	9-6045		Shield Cup - Standoff - Std.
21	9-6054		Shield Cup - Standoff - Long
22	9-6046		Shield Cup - Crown
23	9-6047		Shield Cup - Gouging

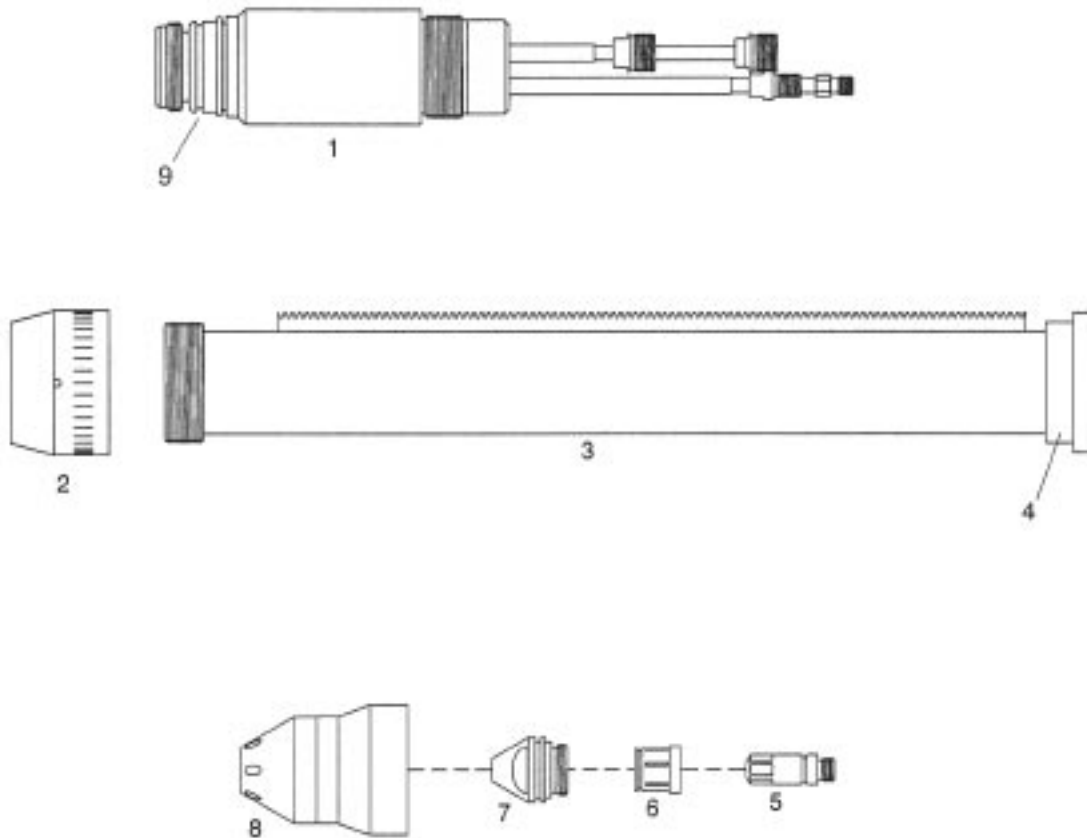


# H-145 Stak Pak



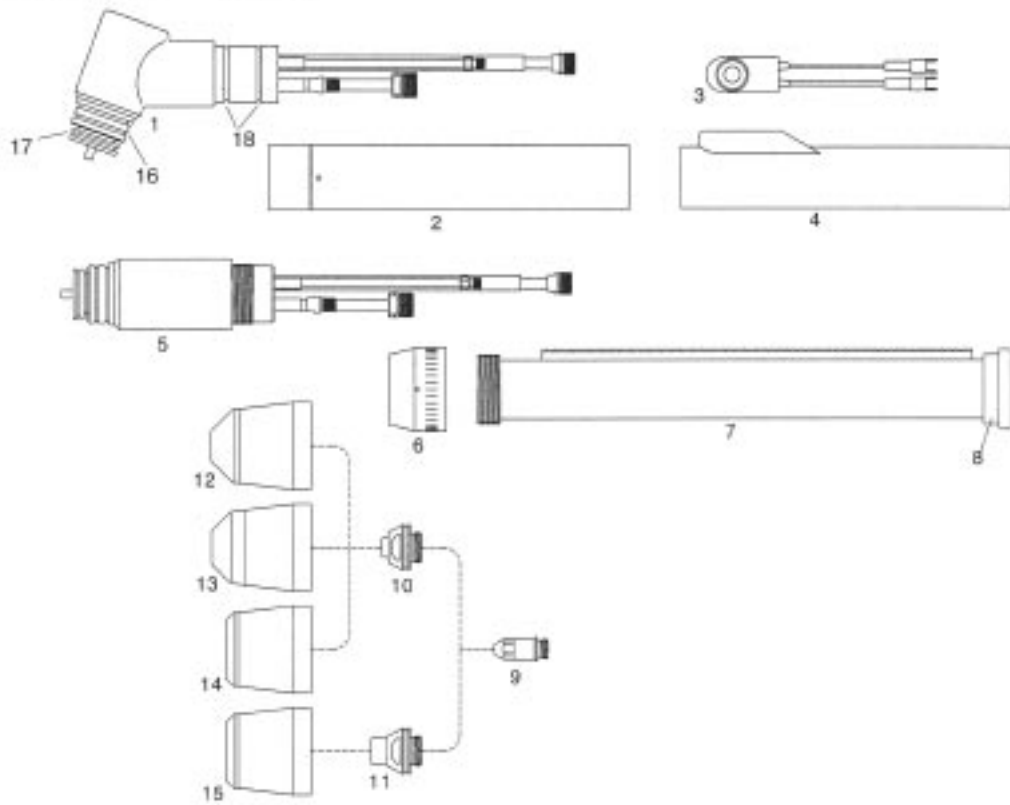
Item	Ref.	Code	Description
1	9-5816		70° Torch Shell
2	9-5829		70° Torch Shell
3	9-5817		90° Torch Head
4	9-5830		90° Torch Shell
5	8-4312		Torch Handle
6	9- 1246		Switch
7	8-4302		Insert
8	8-4303		Closure
9	8-4311		Boot
10	9-6078		Electrode - Cutting, Air
	9-6129		Electrode - Cutting, N2
	9-6080		Electrode - Cutting, Ar/H2
11	9-6081		Gas Distributor - Cutting
12	9-6055		Tip - Cutting 35A Air/N2
	9-6056		Tip - Cutting 70A Air/N2
	9-6057		Tip - Cutting 105A Air/N2
	9-6058		Tip - Cutting 140A Air/N2
	9-6064		Tip - Cutting 70A Ar/H2
	9-6065		Tip - Cutting 105A Ar/H2
	9-6066		Tip - Cutting 140A Ar/H2
13	20-1403		Coolant Tube extension - Gouging
14	20-1404		Electrode - Gouging, Air/N2/02 (replaces CS96130)
	20-1405		Electrode - Gouging, Ar/H2 (replaces CS96131)
15	20-1409		Gas Distributor - Gouging (replaces CS96082)
16	20-1415		Tip - Gouging .171 (replaces CS96067)
	20-1416		Tip - Gouging .209 (replaces CS96068)
	20-1417		Tip - Gouging .246 (replaces CS96069)
	20-1418		Tip - Gouging .246 (replaces CS96070)
17	9-6075		Shield Cup - Standoff - Std.
18	9-6083		Shield Cup - Standoff - Long
19	20-1424		Shield Cup - Gouging - Hand (replaces CS96077)
20	8-0538		O-ring

**PCM-145**    **Stak Pak, TD750, Merlin 3000, Pak 15XC w/Max 300 retrofit**



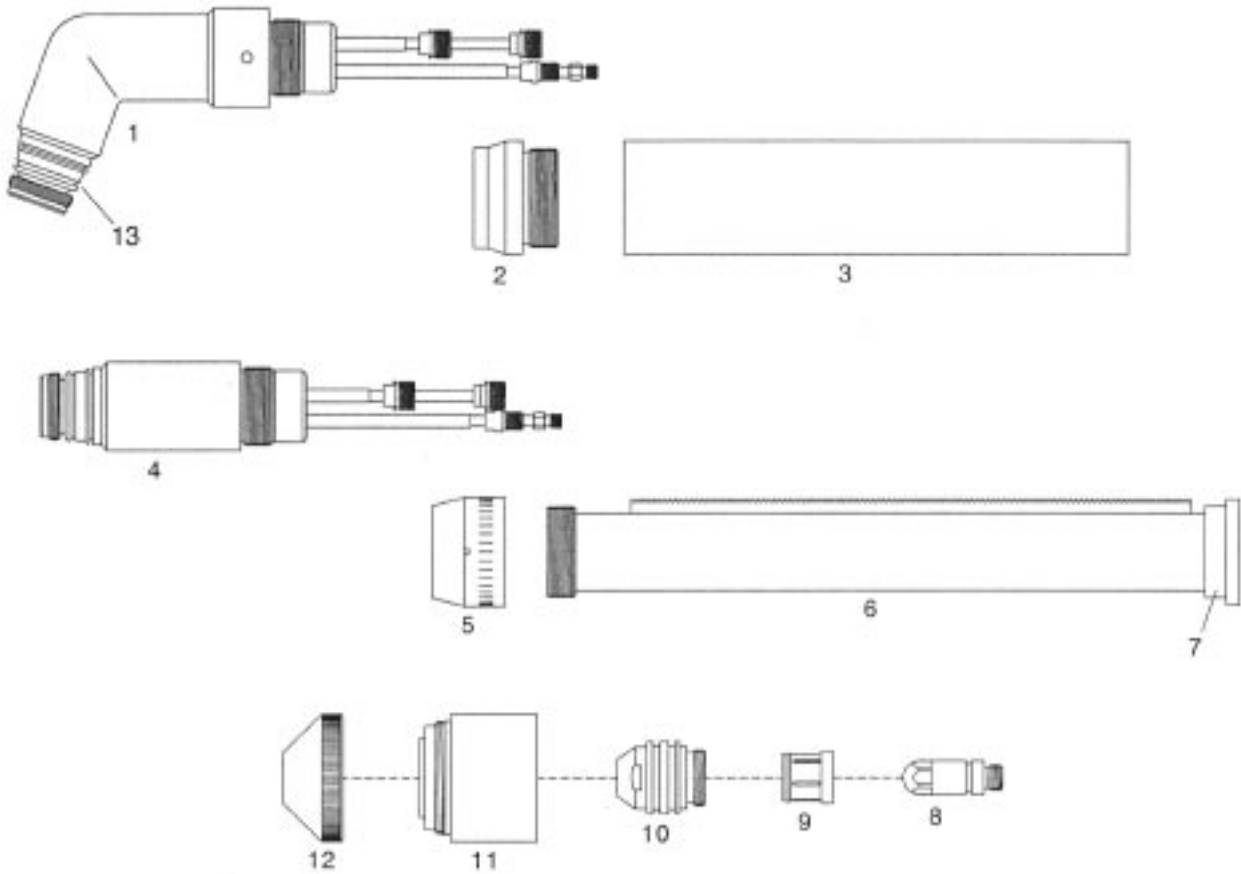
Item	Ref.	Code	Description
1	9-6410		180° Torch Head
2	8-2158		Adaptor
3	7-3207		Positioning Tube
4	8-4204		End Cap
5	20-1018		Electrode Air/O2
	9-6431		Electrode N2
	9-6427		Electrode Ar/H2
6	9-6416		Gas Distributor
7	9-6424		Tip Cutting 70A Air/N2
	9-6425		Tip Cutting 105A Air/N2
	9-6426		Tip Cutting 140A Air/N2
	9-6419		Tip Cutting 70A O2
	9-6420		Tip Cutting 105A O2
	9-6421		Tip Cutting 140A O2
	9-6428		Tip Cutting 70A Ar/H2
	9-6429		Tip Cutting 105A Ar/H2
	9-6430		Tip Cutting 140A Ar/H2
8	9-6411		Shield Cup - Standoff - Long O2
	9-6412		Shield Cup - Standoff - Long Air/N2 Ar/H2
9	8-0538		O-ring

**PCH/M-150 Pak 15XC**



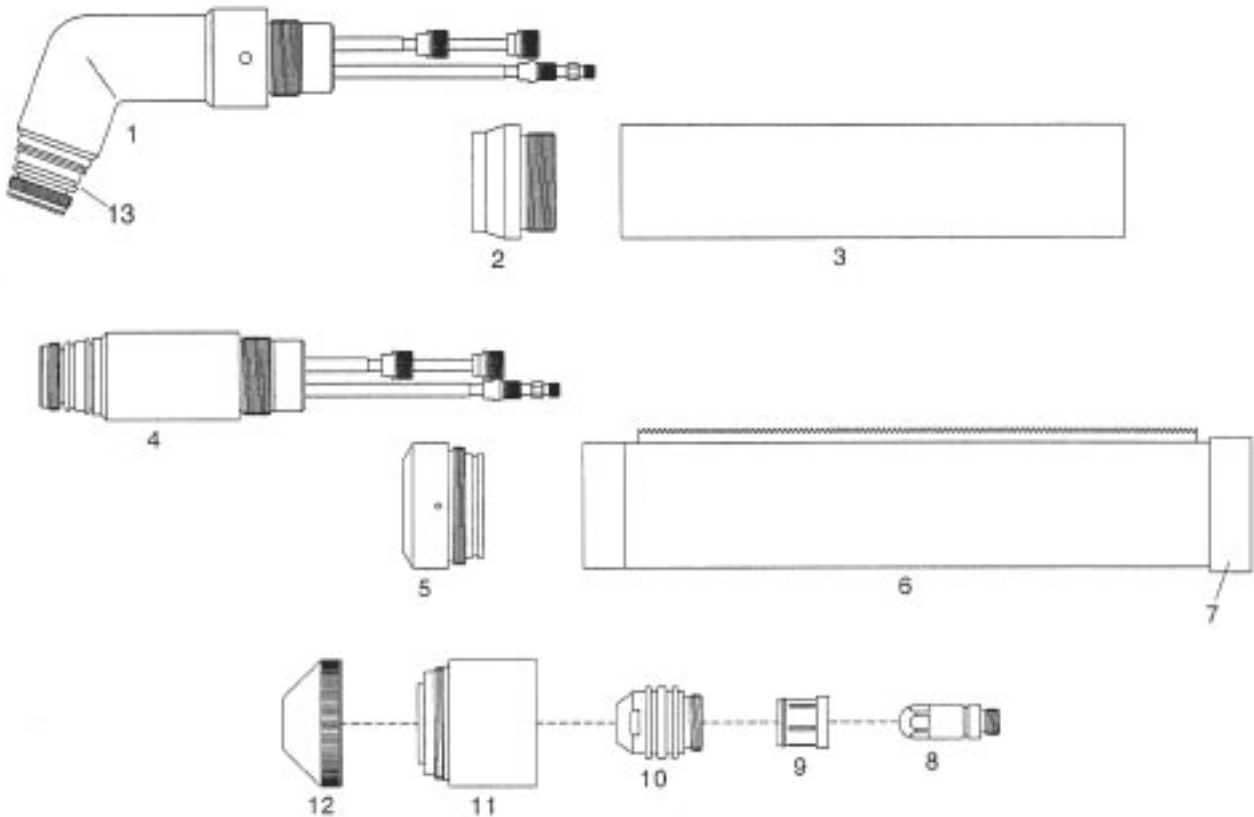
Item	Ref.	Code	Description
1	9-5743		70° Torch Head
N/S	9-5744		90° Torch Head
2	9- 1063		Handle
3	9- 1246		Switch
4	9-1064		Switch Sheath
5	9-5745		180° Torch Head
6	8-2158		Adaptor
7	7-3207		Positioning Tube
8	8-4204		End Cap
9	9-5749		Electrode - Air
	9-5760		Electrode- O2
	9-5754		Electrode - N2, Ar- H2
10	9-5748		Tip ø 1,09 - .043 - 50A Air
	9-5747		Tip ø 1,40 - .055 - 100A Air
	9-5746		Tip ø 1,78-.070- 150A Air
	9-5753		Tip 50A O2
	9-5752		Tip 100A O2
	9-5751		Tip 150A O2
	9-5765		Tip 50A N2
	9-5766		Tip 100A N2
	9-5767		Tip 150A N2
	9-5775		Tip 150A Ar/H2
11	9-5756		Tip - Gouging 85A .078
	9-5755		Tip - Gouging 150A .120
12	9-5750		Shield Cup - Ceramic Front
13	9-5790		Shield Cup - Std. - Metal Front
14	9-5801		Shield Cup - Copper (Tip Exp.)
	9-5758		Shield Cup - Ceramic (Tip Exp.)
15	9-5774		Shield Cup - Gouging
16	8-0540		O-ring (shield cup, Lg.)
17	8-0537		O-ring (shield cup, Sm.)
18	8-5570		O-ring

# Maximizer 300 Merlin 1000



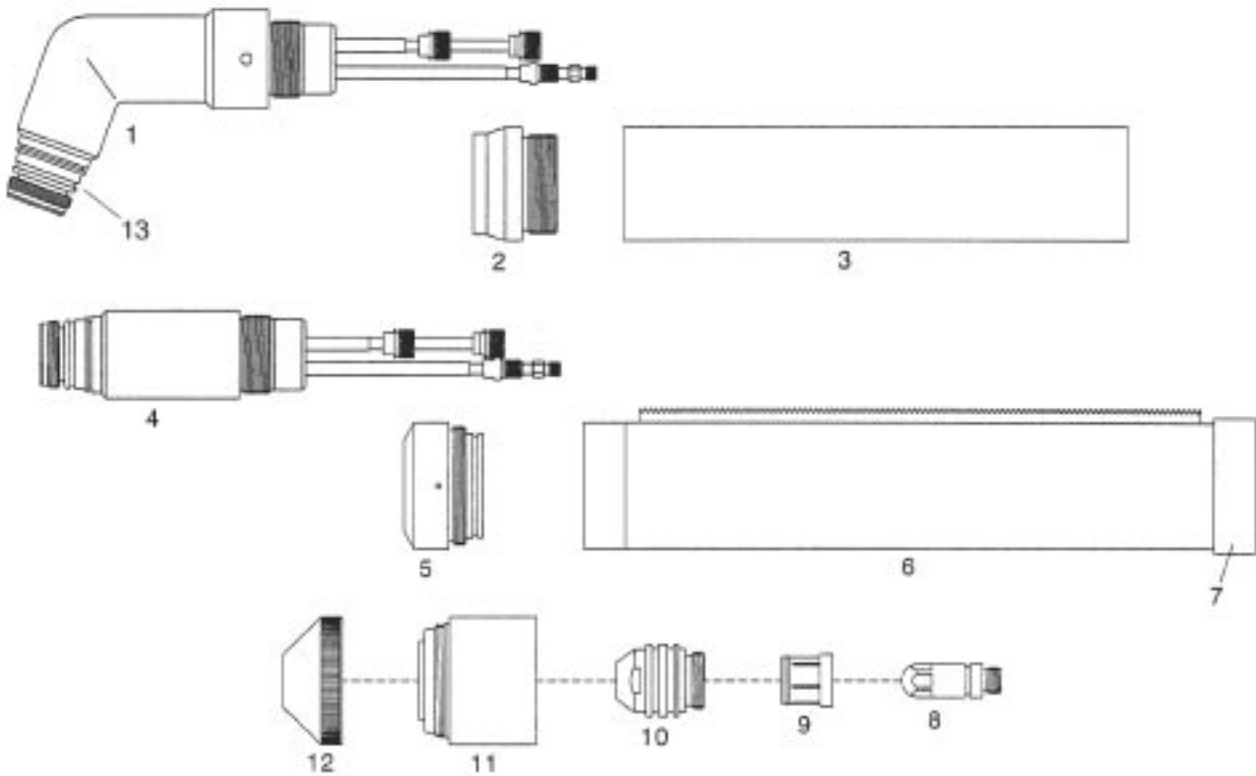
Item	Ref.	Code	Description
1	9-6457		70° Torch Head
N/S	9-6459		90° Torch Head
2	9-6767		Adaptor
3	9-6769		Mounting Tube
4	9-6410		180° Torch Head
5	8-2158		Adaptor
6	7-3207		Positioning Tube
7	8-4204		End Cap
8	20-1016		Electrode O2
	20-1018		Electrode Air
	20-1023		Electrode N2
	20-1025		Electrode Ar/H2
9	20-0008		Gas Distributor 50-225A
10	20-1030		Tip 50A O2/N2/Air
	20-1031		Tip 100A O2/N2/Air
	20-1034		Tip 300A
11	20-1002		Shield Cup Body
	20-1029		Shield Cup Body, Underwater
12	20-1003		End Cup 50A
	20-1004		End Cup 100A
	20-1028		End Cup, Underwater
<b>SQUARE CUT,50A, O2-O2 CONSUMABLES</b>			
8	20-1050		Electrode Cutting O2
9	20-0008		Gas Distributor, Cutting
10	20-1051		Tip Cutting 50A
11	20-1002		Shield Cup Body
12	20-1052		Shield Cup End Cup, 50A
13	8-0538		O-ring

**Maximizer 300 Merlin 3000, Merlin 6000**



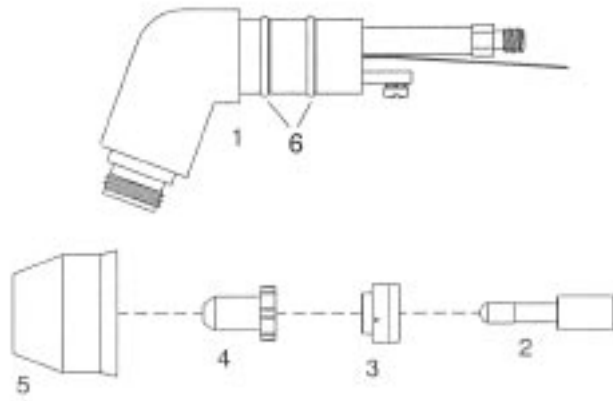
Item	Ref.	Code	Description
1	9-6457		70° Torch Head
N/S	9-6459		90° Torch Head
2	9-6767		Adaptor
3	9-6769		Mounting Tube
4	9-6410		180° Torch Head
5	8-3322		Adaptor
6	9-6819		Positioning Tube
7	8-6522		End Cap
8	20-1010		Electrode O2 100-225A
	20- 1015		Electrode O2 100A
	20-1016		Electrode O2 150A
	20-1017		Electrode O2 225A
	20-1018		Electrode Air 50-225A
	20-1021		Electrode Air/O2 300A
	20-1023		Electrode N2 50-300A
	20-1025		Electrode Ar/H2 100-300A
	20-1050		Electrode - Cutting O2
9	20-0008		Gas Distributor 50-225A
	20-1009		Gas Distributor 300A
10	20-1030		Tip 50A
	20-1031		Tip 100A
	20-1032		Tip 150A
	20-1033		Tip 225A
	20-1034		Tip 300A
11	20-1002		Shield Cup Body
	20-1029		Shield Cup Body, Underwater ( Merlin 6000 only )
12	20-1003		End Cup 50A
	20-1004		End Cup 100-225A
	20-1005		End Cup 300A
	20-1006		End Cup, Underwater, 100-300A
	20-1028		End Cup, Underwater ( Merlin 6000 only )
13	8-0538		O-ring

# Maximizer 300 Merlin 6000 GST



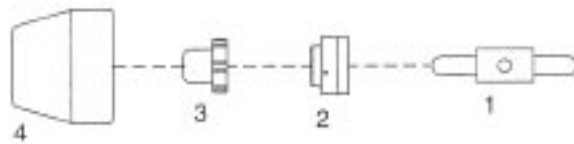
Item	Ref.	Code	Description
1	9-6457		70° Torch Head
N/S	9-6459		90° Torch Head
2	9-6767		Adaptor
3	9-6769		Mounting Tube
4	9-6410		180° Torch Head
5	8-3322		Adaptor
6	9-6819		Positioning Tube
7	8-6522		End Cap
8	20-1010		Electrode O2 100-225A
	20-1018		Electrode Air 50-225A
	20-1021		Electrode Air/O2 300A
	20-1023		Electrode N2 50-300A
	20-1025		Electrode Ar/H2 100-300A
9	20-0008		Gas Distributor 50-225A
	20-1009		Gas Distributor 300A
10	20-1030		Tip 50A
	20-1031		Tip 100A
	20-1032		Tip 150A
	20-1033		Tip 225A
	20-1034		Tip 300A
11	20-1002		Shield Cup Body
	20-1029		Shield Cup Body, Underwater
12	20-1003		End Cup 50A
	20-1004		End Cup 100-225A
	20-1005		End Cup 300A
	20-1006		End Cup, Underwater, 100-300A
	20-1028		End Cup, Underwater
			<b>SQUARE CUT, 50A, O2-O2 CONSUMABLES</b>
8	20-1050		Electrode Cutting O2
9	20-0008		Gas Distributor, Cutting
10	20-1051		Tip Cutting 50A
11	20-1002		Shield Cup Body
12	20-1052		Shield Cup End Cup, 50A
13	8-0538		O-ring

**PCH-20 Dynapak 110, Pak 2XT**



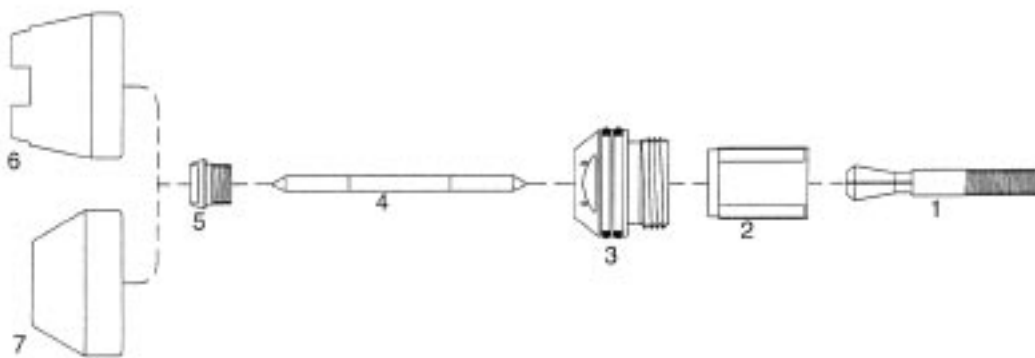
Item	Ref.	Code	Description
1	8-3220		70° Torch Head
2	9-6006		Electrode
3	8-3233		Gas Distributor
4	8-3218		Tip
5	8-3214		Shield Cup Std.
6	8-0533		O-ring

**PCH-30 Pak-3**



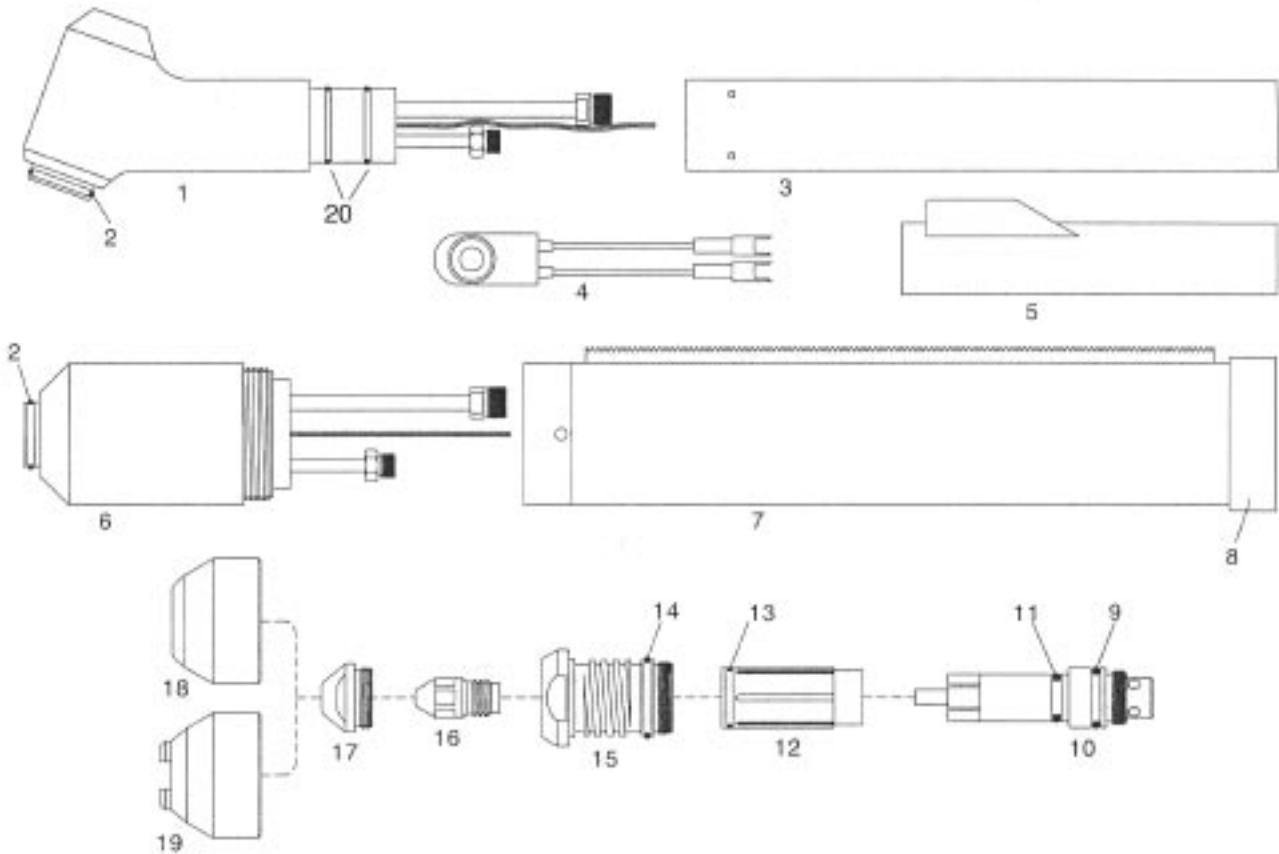
Item	Ref.	Code	Description
1	9-5503		Electrode
2	8-3233		Gas Distributor
3	9-5501		Tip
4	9-5500		Shield Cup Std.

**PCH-50 Pak-5**



Item	Ref.	Code	Description
1	8-5506		Collet
2	8-5510		Sleeve
3	8-5520		Liner (includes O-Rings)
4	8-5508		Electrode
5	8-5507		Tip
6	8-5519		Shield Cup Crown Ceramic
7	8-5505		Shield Cup Std. Ceramic

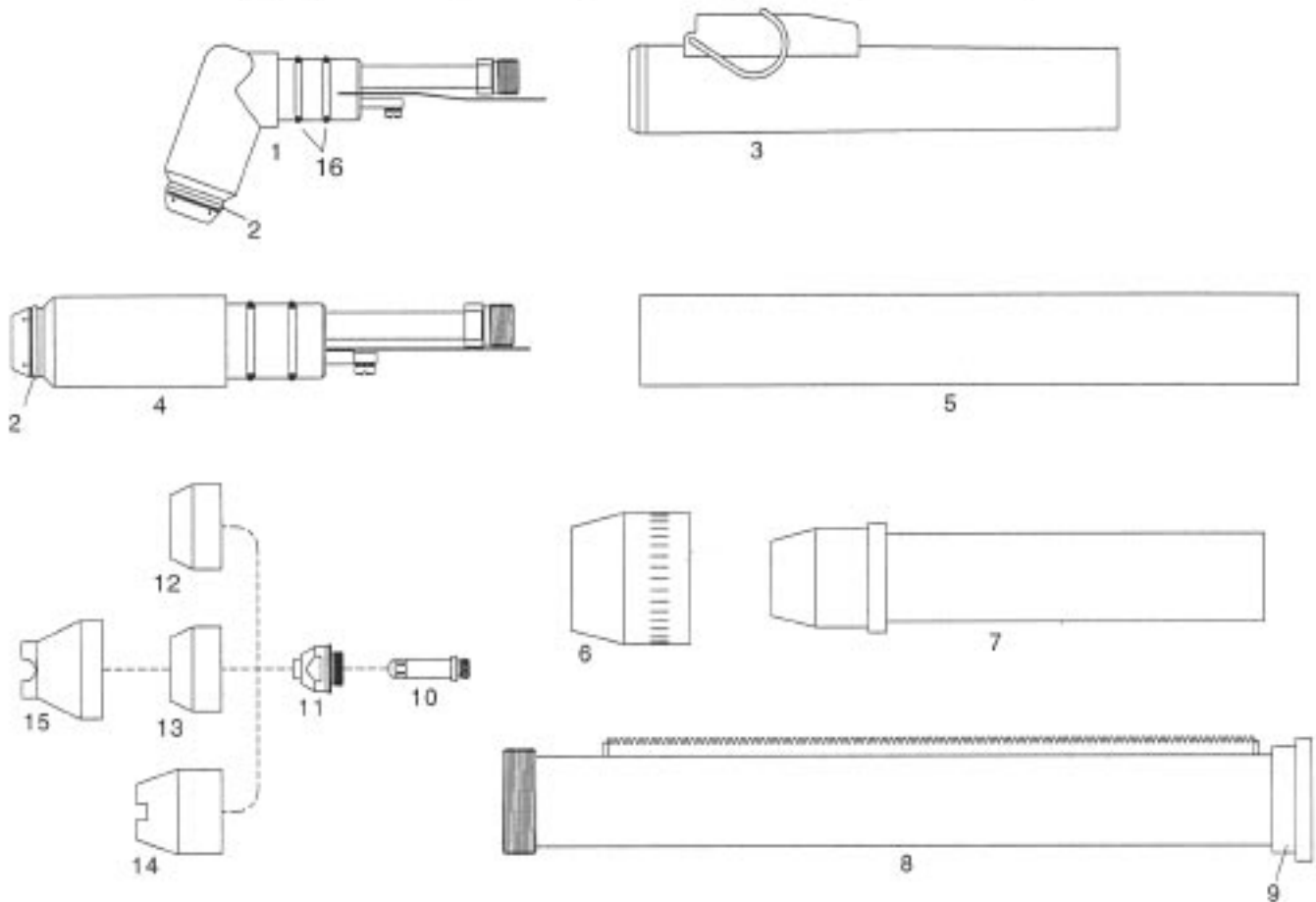
**PCH/M-100 Pak 10XR**



Item	Ref.	Code	Description
N/S	2-2894		Hand torch complete with 25' ( 7.5 mts ) cable
N/S	2-2895		Hand torch complete with 50' ( 15 mts ) cable
N/S	2-2896		Machine torch complete with 25' ( 7.5 mts ) cable
N/S	2-2897		Machine torch complete with 50' ( 15 mts ) cable
1	8-1113		70° Torch Head
2	8-0556		O-Ring ( 5 pcs. )
3	8-1114		Handle
4	9-5522		Switch
5	8-4217		Switch Sheath
6	8-1112		180° Torch Head
7	8-6521		Positioning Tube
8	8-6522		End Cap
9	8-1152		O-Ring, Electrode Holder, Large ( 5 pcs. )
10	8-1108		Electrode Holder, w/O-Rings
11	8-1133		O-Ring, Electrode Holder, Small ( 5 pcs. )
12	9-4339		Gas Distributor, w/O-Ring
13	8-1134		O-Ring, Gas Distributor ( 5 pcs. )
14	8-1135		O-Ring, Liner ( 5 pcs. )
15	8-1106		Liner, w/O-Ring
16	9-4340		Electrode
17	9-4343		Tip ø 0.99 - .039 - 35A
	9-4342		Tip ø 1,32 - .052 - 70A
	9-4341		Tip ø 1,50-.059- 105A
18	8-1100		Shield Cup - Std.
	9-4345		Shield Cup - Machine
19	8-1101		Shield Cup - Crown
20	8-0538		O-ring
N/S	4-2852		Air and power cable 25' ( 7.5 mts ) - Hand torch
N/S	4-2853		Air and power cable 50' ( 15 mts ) - Hand torch
N/S	4-2854		Air and power cable 25' ( 7.5 mts ) - Machine torch
N/S	4-2855		Air and power cable 50' ( 15 mts ) - Machine torch



**PCH/M-51 4XI, 6XI, Pak-3XR, Pak-6XR, Pak-7XR, Pak-5XT, Pak-625XR, Pak-750XR**

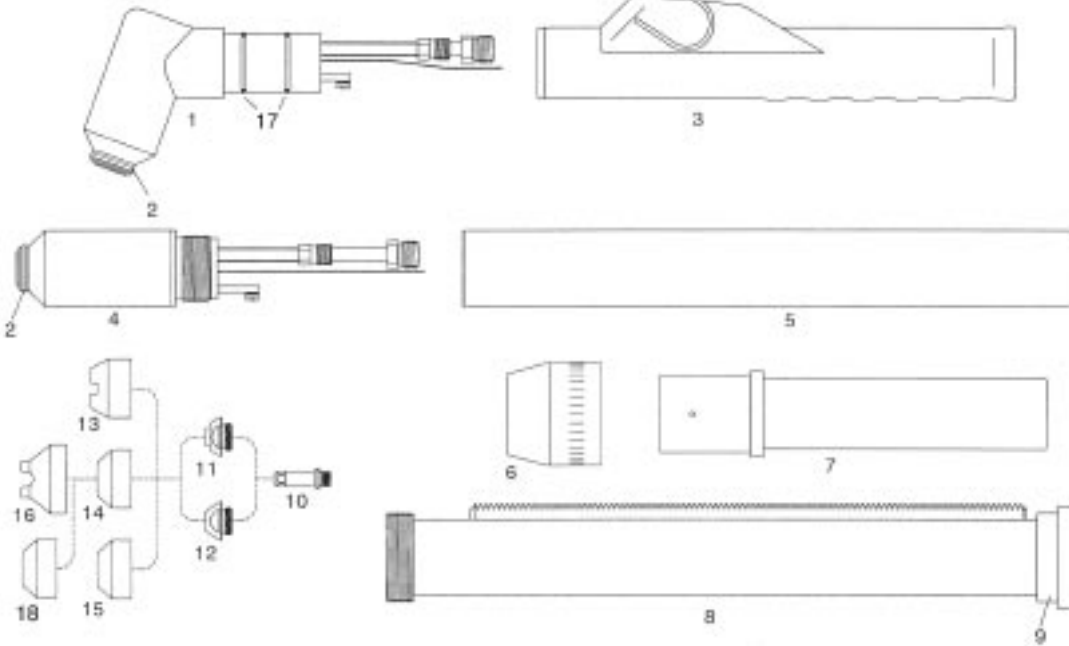


Item	Ref.	Code	Description
N/S	2-2860		Hand torch complete with 25' ( 7.5 mts ) cable
N/S	2-2861		Hand torch complete with 50' ( 15 mts ) cable
N/S	2-2864		Machine torch complete with 25' ( 7.5 mts ) cable
N/S	2-2865		Machine torch complete with 50' ( 15 mts ) cable
1	9-5635		70° Torch Head
2	8-5525		O-Ring ( 20 pcs. )
3	9-5636E		Handgrip complete with microswitch ( incl. 9-5636, 9-5522, 8-1322 )
4	9-5634		180° Torch Head
5	9-5637E		Machine handle
6	8-4018		Nut
7	9-5637		Adaptor
8	8-5005		Positioning tube
9	8-4204		End cap
10	9-5633		Electrode, long life, ( Pat. Pending )
11	9-5718		Tip 10-40A - ø 0,96 - .038
	9-5631		Tip 10-60A- ø 1,10-.043
	8-3321		Tip65A-0 1,20- .047
	9-5724		Tip Gouging - ø 2,00 - .078
12	9-5630		Shield Cup Ceramic
13	8-2159		Shield Cup-Phenolic-Std.
14	8-5526		Shield Cup-Crown-Ceramic
15	8-5779		Shield Cup-Crown (fits over 8-2159)
16	8-0533		O-ring
N/S	4-5030		Ajr and power cable 25' ( 7.5 mts ) - Hand torch
N/S	4-5031		Air and power cable 50' ( 15 mts ) - Hand torch
N/S	4-5032		Air and power cable 25' ( 7.5 mts ) - Machine torch
N/S	4-5033		Air and power cable 50' ( 15 mts ) - Machine torch

\* CIRCLECUTTING ATTACHMENT : See page # 32

**PCH/M-52**

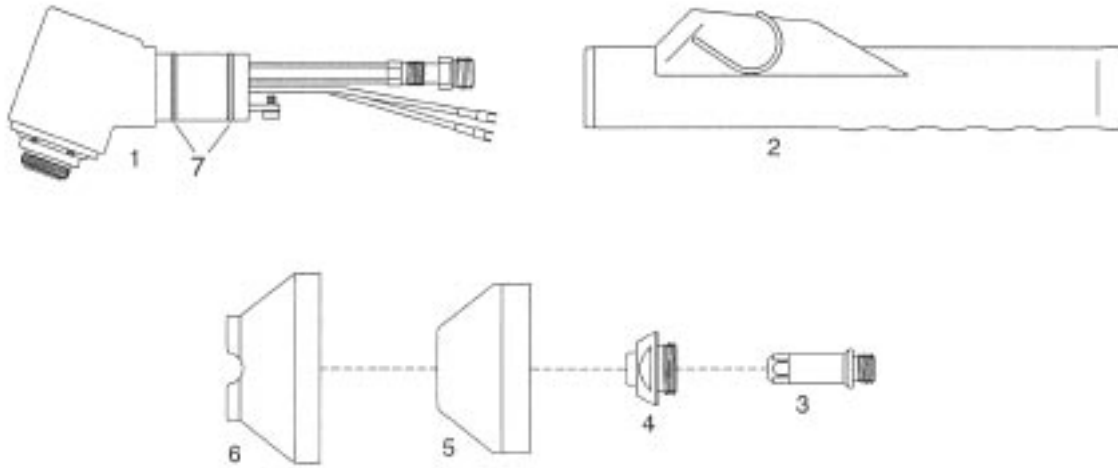
Pak-5XR\*, Pak-6XR\*, Pak-7XR, Pak-8XR, Pak-10XR, Pak-625XR\*, Pak-750XR\*  
 Pak-1000XR, Pak-1250XR  
 \*=Dual Gas



Item	Ref.	Code	Description
N/S	2-2936		Hand torch complete with 25' ( 7.5 mts )
N/S	2-2937		Hand torch complete with 50' ( 15 mts )
N/S	2-2938		Machine torch complete with 25' ( 7.5 mts )
N/S	2-2939		Machine torch complete with 50' ( 15 mts )
1	9-5642		70° Torch Head
2	8-5525		O-Ring ( 20 pcs. )
3	9-5644E		Handgrip complete with microswitch ( incl. 9-5644, 9-5522, 8-4216 )
4	9-5643		180° Torch Head
5	9-7833		Machine handle
6	8-4018		Nut
7	9-1901		Adaptor
8	8-5005		Positioning tube
9	8-4204		End cap
10	8-3331		Electrode Air, long life. ( Pat. Pending )
	9-5619		Electrode Air (plated), long life ( Pat. Pending )
	9-5711		Electrode Multi Gas
11	9-5702		Tip 35A - ø 0,90 - .035
	9-5618		Tip45-SSA- ø 1,10-.043
	9-5707		Tip 60-70A - ø 1,20 - .047
	9-5782		Tip 80A - ø 1,32 - .052
	9-5708		Tip 105A - ø 1,50- .059
12	8-5129		Tip Gouging
	9-5709		Tip Gouging 70A - ø 1,99 - .078
	9-5710		Tip Gouging 105A - ø 2,36 - .093
	9-5713		Tip Gouging 105A - ø 2,87 - .113
13	9-5617		Shield Cup Std. Ceramic
14	9-5781		Shield Cup Phenolic Std.
15	9-5694		Shield Cup-Crown Ceramic
16	9-5780		Shield Cup-Crown (fits over CS95781)
17	8-0536		O-ring
18	9-5799		Shield cup (fits over 9-5781)
N/S	4-5034		Air and power cable 25' ( 7.5 mts ) - Hand torch
N/S	4-5035		Air and power cable 50' ( 15 mts ) - Hand torch
N/S	4-5036		Air and power cable 25' ( 7.5 mts ) - Machine torch
N/S	4-5037		Air and power cable 50' ( 15 mts ) - Machine torch

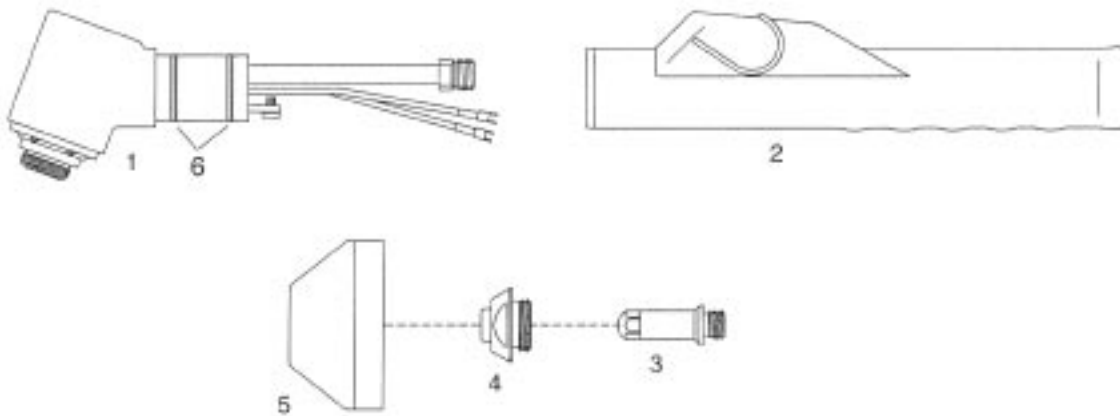
\* CIRCLECUTTING ATTACHMENT : See page # 32

**PCH-52P Pak 1250XR**



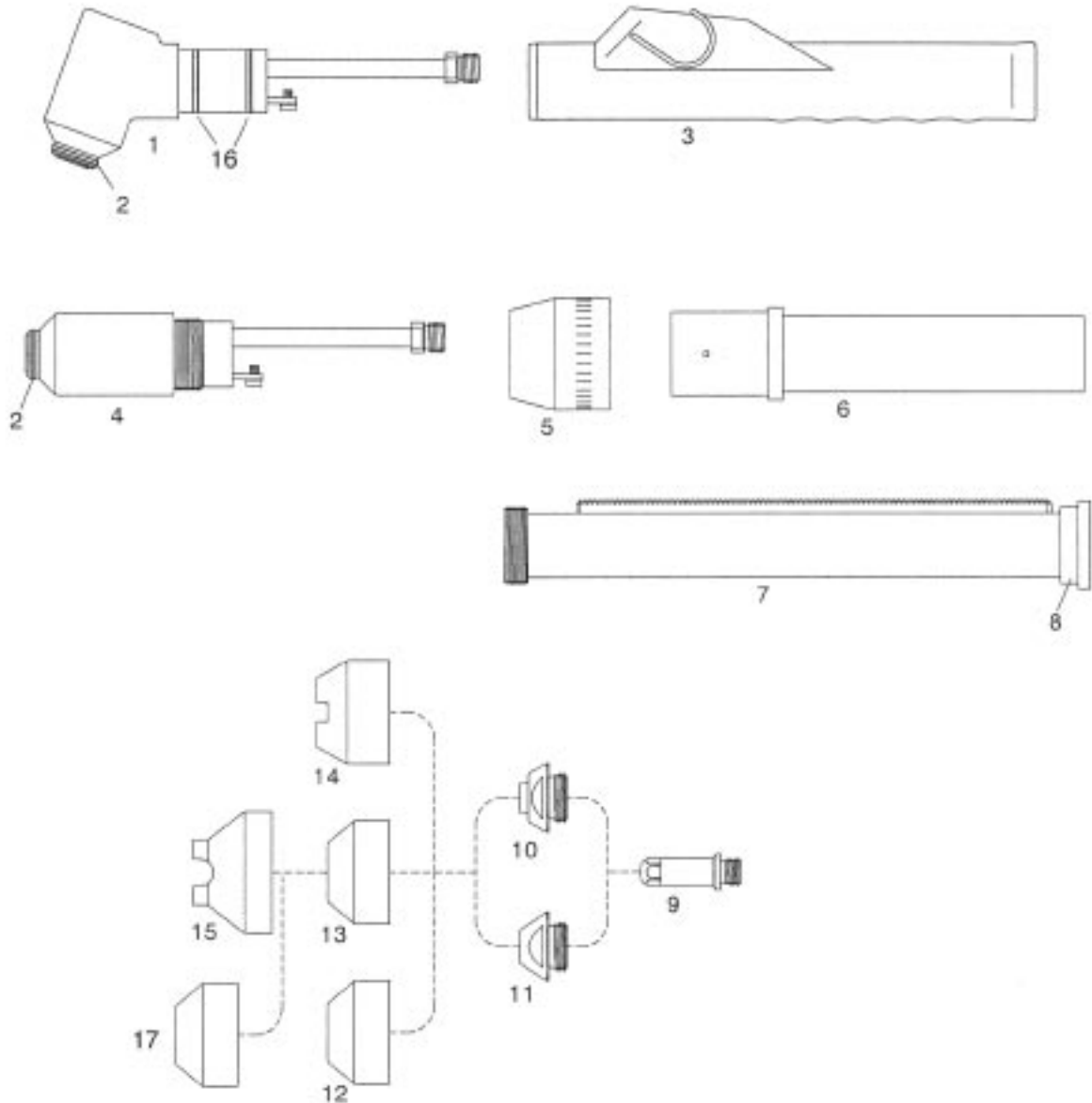
Item	Ref	Code	Description
1	9-6358		70° Torch Head
2	9-5644E		Handgrip complete with microswitch ( incl. 9-5644, 9-5522, 8-4216 )
3	9-5619		Electrode Air (plated), long life ( Pat. Pending )
	9-5711		Electrode Multi Gas
4	9-5702		Tip 35A - $\varnothing$ 0,90 - .035
	9-5707		Tip 70A - $\varnothing$ 1,20 - .047
	9-5708		Tip 105A - $\varnothing$ 1,50- .059
5	9-6355		Shield Cup Std.
6	9-6357		Shield Cup Standoff Crown (fits over CS96355)
7	8-0536		O-ring

**PCH-53P Pak Master 100**



Item	Ref.	Code	Description
1	9-6370		70° Torch Head
2	9-5644E		Handgrip complete with microswitch ( incl. 9-5644, 9-5522, 8-4216 )
3	9-5898		Electrode Air
4	9-5897		Tip 70A Air
5	9-6355		Shield Cup Std.
6	8-0536		O-ring

**PCH/M-53 Pak Master 100**

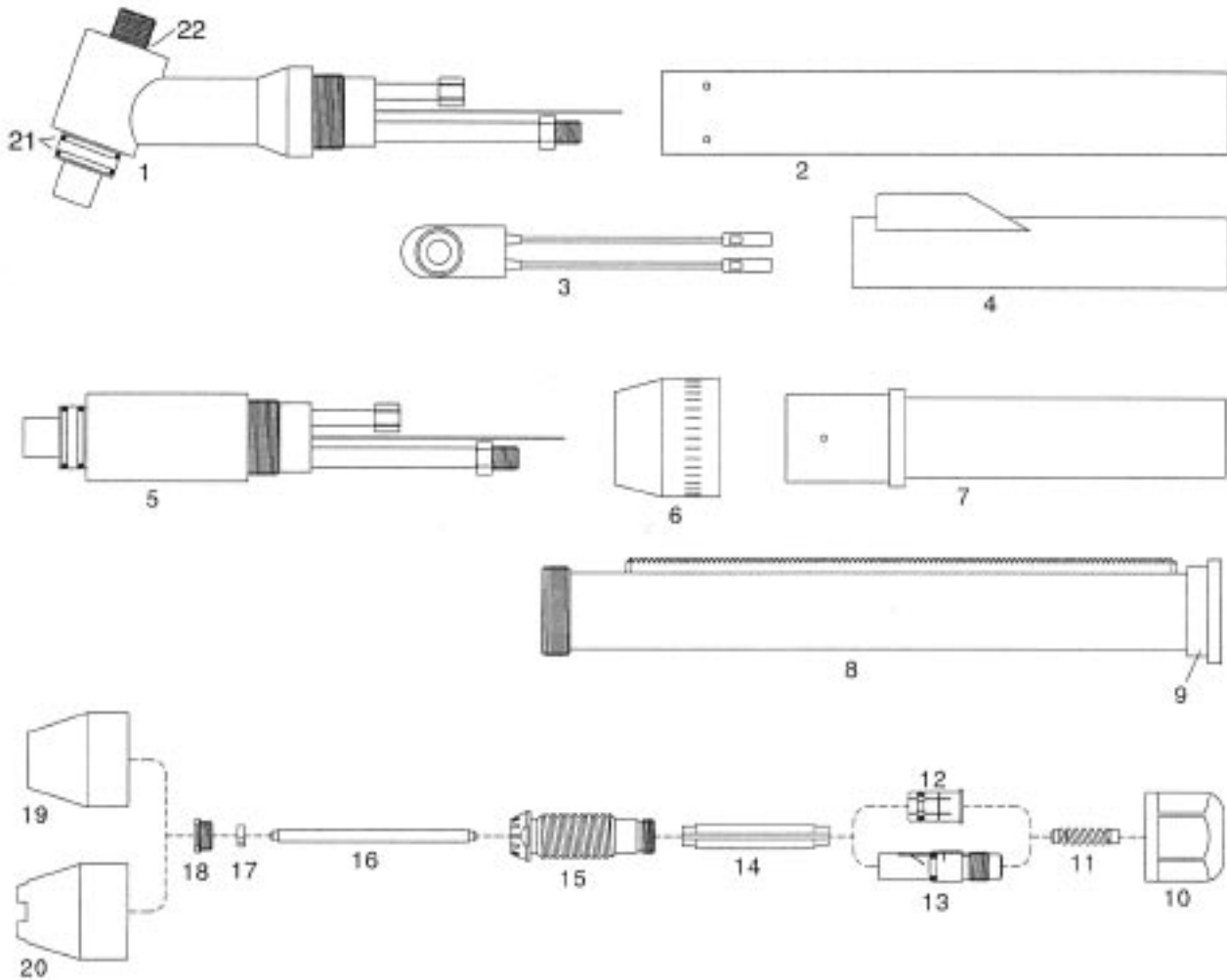


Item	Ref.	Code	Description
1	9-6170		70° Torch Head
2	8-5525		O-Ring ( 20 pcs. )
3	9-5644E		Handgrip complete with microswitch ( incl. 9-5644, 9-5522, 8-4216 )
4	9-6180		180° Torch Head
5	8-4018		Nut
6	9- 1901		Adaptor
7	8-5005		Positioning tube
8	8-4204		End cap
9	9-5898		Electrode Air
10	9-5897		Tip 70A
11	9-5709		Tip Gouging 70A - ø 1,99 - .078
12	9-5617		Shield Cup Std. Ceramic
13	9-5781		Shield Cup Phenolic Std.
14	9-5694		Shield Cup-Crown Ceramic
15	9-5780		Shield Cup-Crown (fits over CS95781)
16	8-0536		O-ring
17	9-5799		Shield cup (fits over 9-5781)

\* CIRCLECUTTING ATTACHMENT : See page # 32

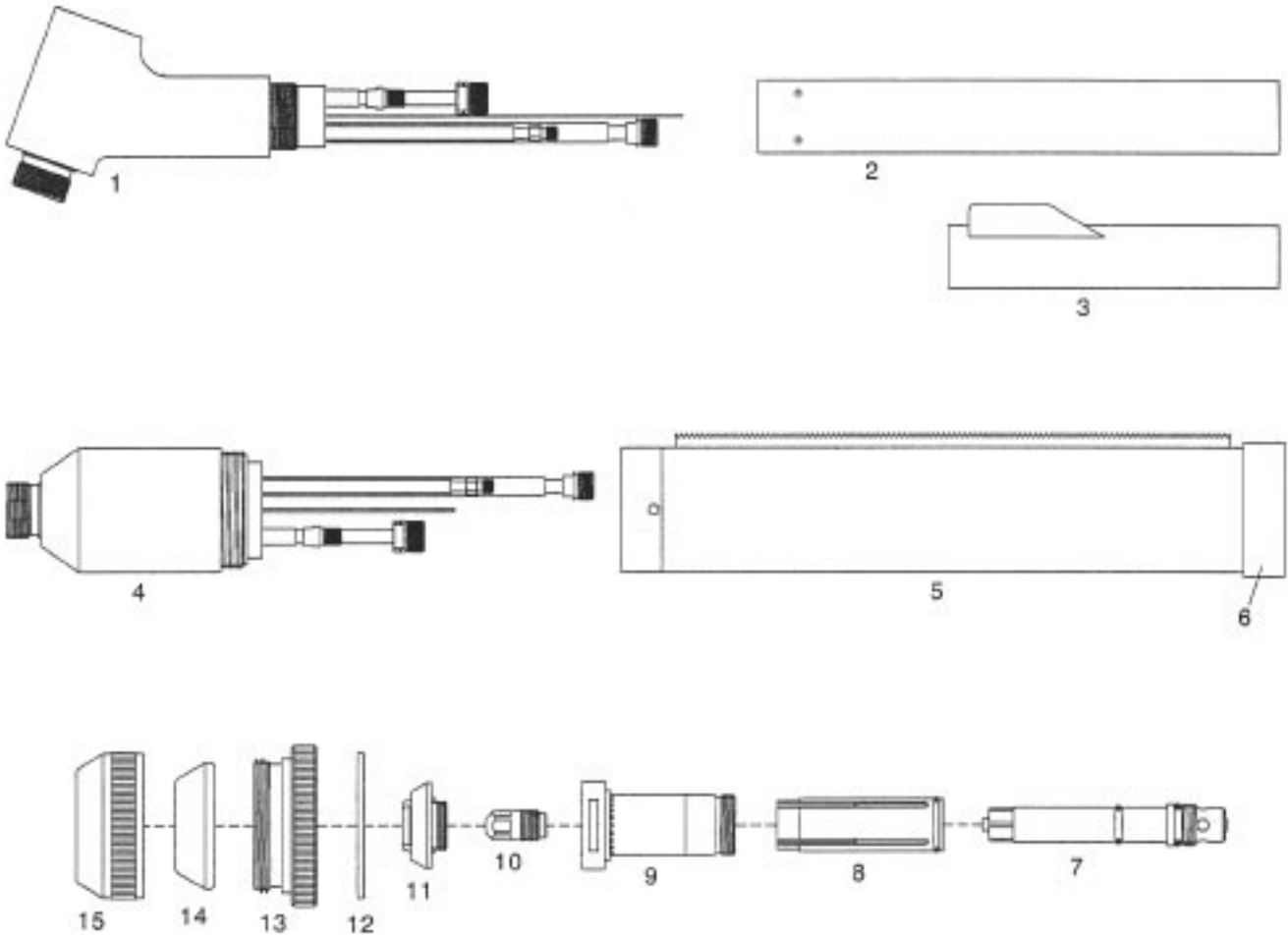
**PCH/M-4B(T)**

**Pak-5 (Mech), Pak-10, Pak-10XR (Mech)**



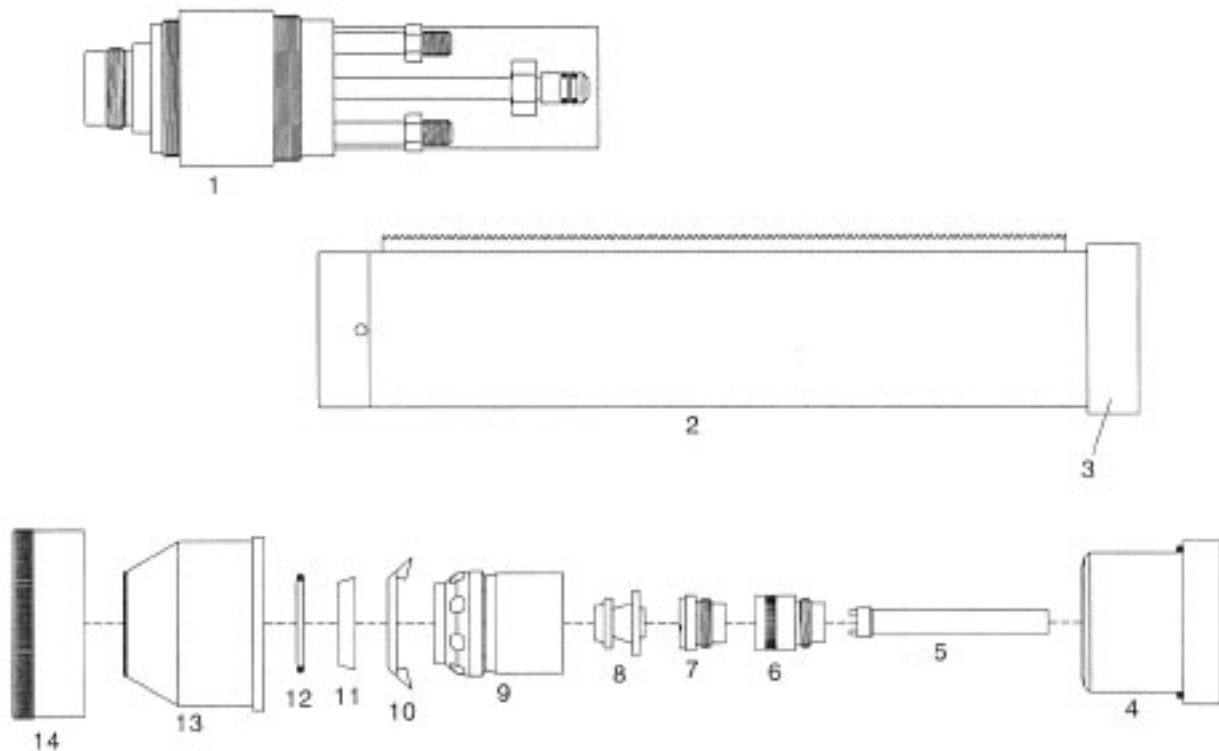
Item	Ref.	Code	Description
1	8-4160		70° Torch Head
N/S	8-4161		90° Torch Head
2	8-5007		Handle
3	8-4218		Switch
4	8-4216		Switch Sheath
5	8-4196		180° Torch Head
6	8-4018		Nut
7	9-1901		Adaptor
8	8-5005		Mounting Tube
9	8-4204		End Cap
10	8-4158		Back Cap
11	8-4050		Spring
12	8-4156		Collet Std.
13	8-4197		Collet ( 4BT only )
14	8-4182		Sleeve
15	8-4154		Liner
16	8-4073		Electrode
17	9-2421		Gas Distributor
18	8-4153		Tip Lo-Amp .059
	8-4189		Tip Lo-Amp Std. .030 ( 4BT/5 )
	8-4211		Tip Std. .046 ( 4BT/5 )
19	8-4088		Shield Cup Std. Ceramic
20	8-4213		Shield Cup Crown Ceramic
21	8-0554		O-ring
22	8-0530		O-ring

**PCH/M-6B Pak-44, Pak-45**

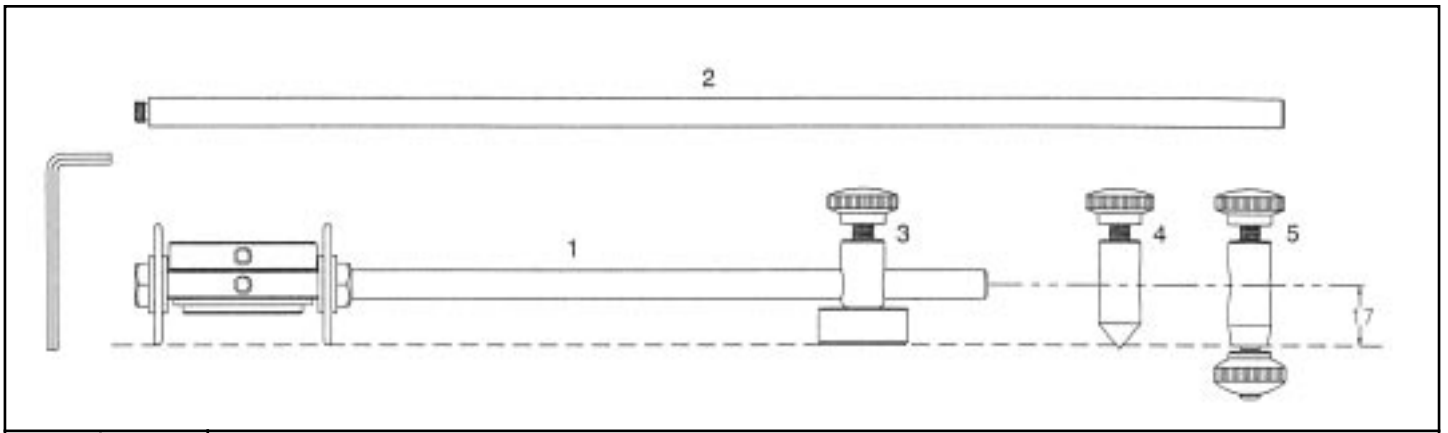


Item	Ref.	Code	Description
1	8-6583		70° Torch Head
N/S	8-6584		90° Torch Head
2	8-6519		Handle
3	8-6564		Switch/Sheath/Nomex
4	8-6577		180° Torch Head
5	8-6521		Positioning Tube
6	8-6522		End Cap
7	8-6615		Electrode Holder
8	8-6569		Gas Distributor
9	8-6571		Liner
10	8-6578		Electrode Gen Purpose
	8-6586		Electrode Lo-Amp
11	8-6580		Tip 100A .067 w/O-rings
	8-6648		Tip 150A .076 w/O-rings
	8-6575		Tip 200A .093 w/O-rings
	8-6582		Tip 300A .113 w/O-rings
	8-6572		Tip 400A .125 w/O-rings
12	8-6512		Gasket
13	8-6581		Outer Insulator
14	8-6514		End Piece
15	8-6515		End Cap

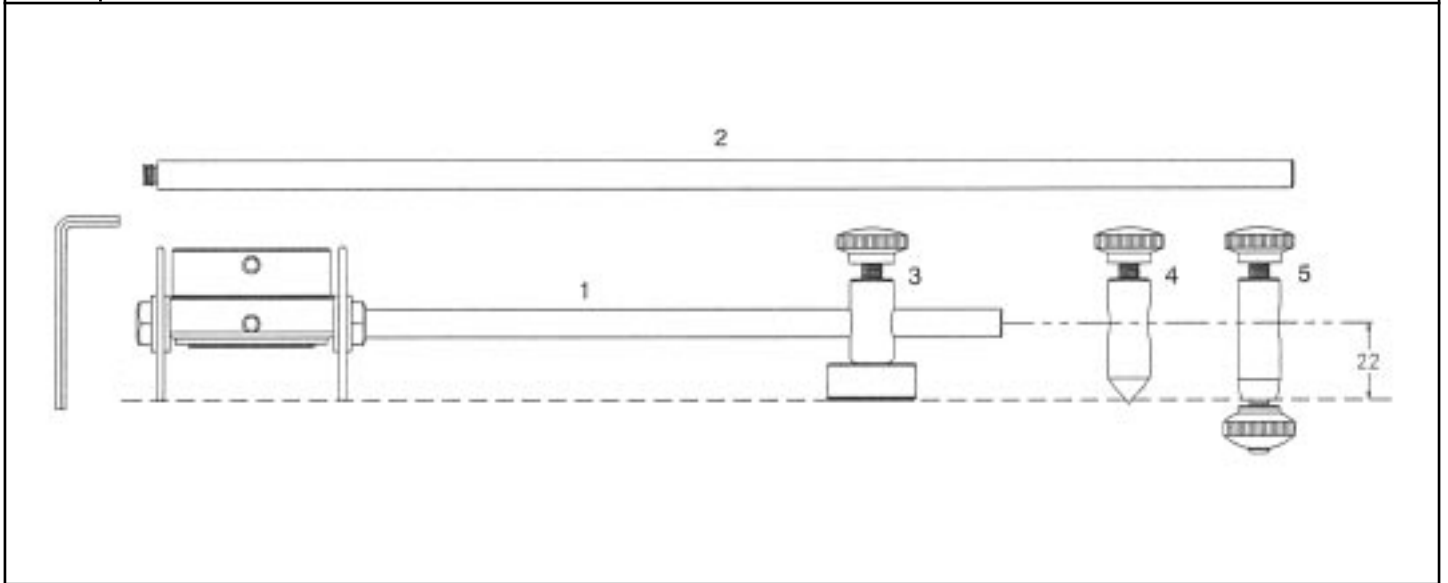
**M-200 CC-65, CC-66, TA-500, TAC-500**



Item	Ref.	Code	Description
1	8-6054		Torch Head
2	9-1720		Positioning Tube
3	8-6522		End Cap
4	8-6060		Outer Insulator
5	9-1640		Coolant Tube
6	9-1642		Electrode Seat
7	9-1662		Electrode 1000A
	9-2841		Electrode Rev Swirl
	9-1641		Electrode 500A
8	8-6042		Tip 250A
	8-6043		Tip 350A
	8-6044		Tip 500A
	8-6045		Tip 750A
	8-6046		Tip 1000A
	8-6068		Tip 1000A Heavy Duty
	8-6047		Tip 500A Gouging
9	9-2210		Inner Tip Retainer
10	9-2451		Coolant Baffle
11	8-6006		End Piece-Water Shield
	8-0607		End Piece-Gas Shield
	8-6029		End Piece-Ar/H2 Secondary
12	8-0563		O-Ring ( 20 pcs )
13	8-6057		End Cap-Heavy Duty
	8-6077		End Cap-Underwater
	8-6056		End Cap
14	8-6059		Collar



Item	Code	Description
	51859	Circle cutting attachment for PCH 52, PCH-53
	51815	Cutting guide PCH-52, PCH-53
	51846	Circle cutting attachment for PCH-10, PCH-25, PCH-25/38, PCH-26, PCH-28, PCH-35, PCH-40
	51803	Cutting guide PCH-75, PCH-76, PCH-IOOXL, PCH-60, PCH-80
	51862	Circle cutting attachment for PCH-10, PCH-25, PCH-25/38, PCH-26, PCH-28, PCH-35, PCH-40
	51822	Cutting guide PCH-75, PCH-76, PCH-IOOXL, PCH-60, PCH-80
1	51820	Radius bar mm. 250
2	51821	Radius bar mm. 400
3	51826	Magnetic base assembly
4	51827	Free centering straight pin
5	51828	Straight lockint pin



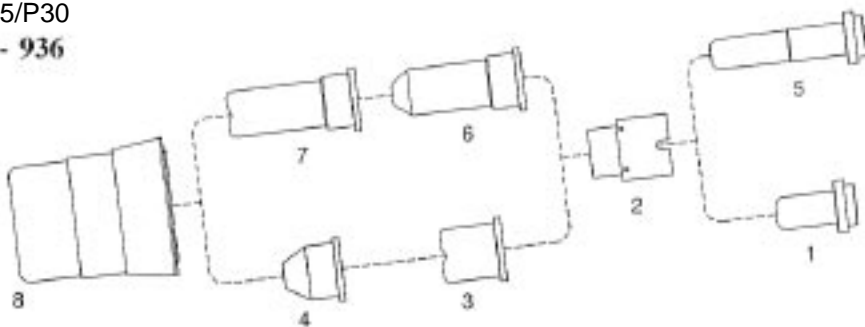
Item	Code	Description
	51857	Circle cutting attachment for PCH-51
	51813	Cutting guide for PCH-51
1	51820	Radius bar mm. 250
2	51821	Radius bar mm. 400
3	51831	Magnetic base assembly
4	51832	Free centering straight pin
5	51833	Straight locking pin





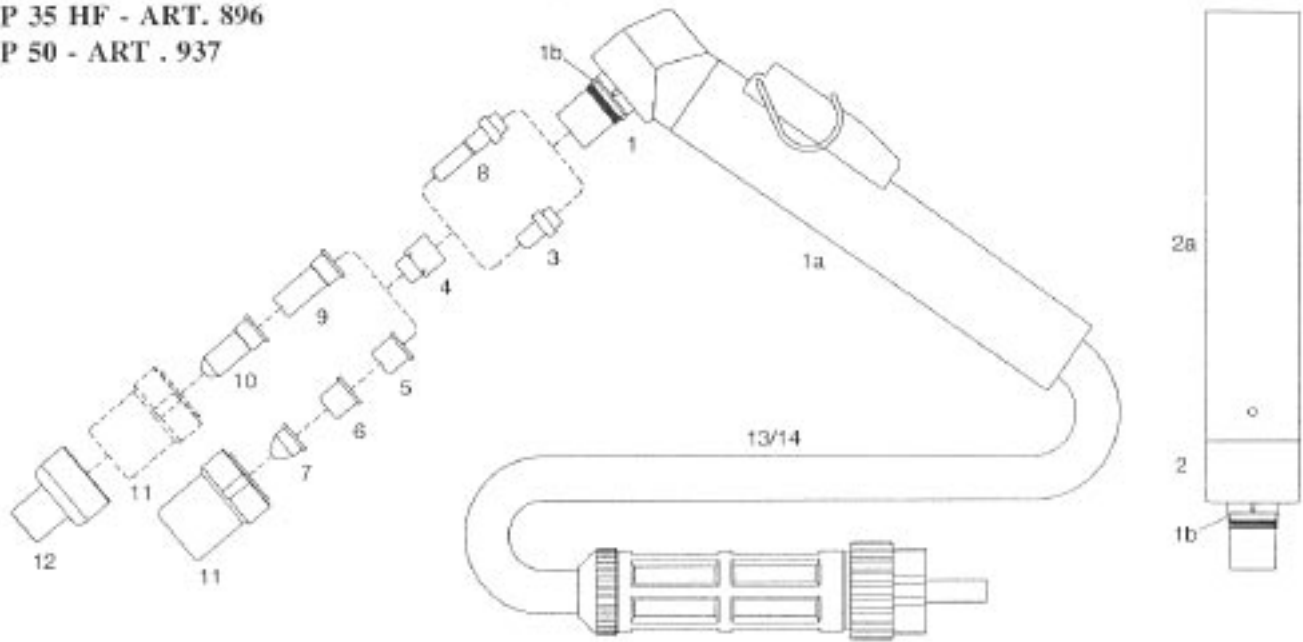
# CEBORA

CEBORA ® P25/P30  
ART. 920 - 925 - 936



Item	Ref.	Code	Description
	1520- Zr 1520- Hf		Electrode - Zr. Electrode - Hf.
2	1510		Swirl ring - VESPEL ®
3	1304		Tip
4	1305		Conical tip (Lo - Amp.)
5	1519- Zr 1519- Hf		Long electrode - Zr. Long electrode - Hf.
6	1306		Long conical tip (Lo - Amp.)
7	1370		Long tip
8	5.710.120		Nozzle retaining cap

CEBORA®  
P 35 HF - ART. 896  
P 50 - ART . 937



Item	Ref.	Code	Description
	1526	03050C	Hand torch complete with 6 mts cable (1/8" connection)
	1574	03051C	Hand torch complete with 6 mts cable (central connector)
		03150/C	Hand torch complete with 12 mts cable (1/8" connection)
		03151/C	Hand torch complete with 12 mts cable (central connector)
		03400	Machine torch complete with 6 mts cable (1/8" connection)
		03401	Machine torch complete with 6 mts cable (central connector)
		03500	Machine torch complete with 12 mts cable (1/8" connection)
		03501	Machine torch complete with 12 mts cable (central connector)
1	1352	01000	Hand torch head
1a	1356	03280/C	Handgrip with microswitch
1 b		01000.60	O - Ring (20 pcs. )
2		03300	Machine torch head
2a		03310	Machine handle
3	1521- Zr	52012	Electrode - Zr.
	1521- Hf	52512	Electrode, long life - Hf. ( Pat. Pending )
4		60001	Swirl ring - VESPEL
5	1304	51100	Tip ø 1.0
	1396	51095	Tip long life ø 1.0
		51100/S	Tip long life ø 1.1
6		51099	Flat tip ø 1.0.
7	1305	51098	Conical tip ø 1.0 (Lo - Amp.)
8	1518- Zr	52013	Extended electrode - Zr.
	1518- Hf	52513	Extended electrode - Hf.
		52513/SS	Extra long electrode mm 42,4 - Hf
9	1370		Extended tip, ø 1.0
	1395	51095/L	Extended tip, long life ø 1.0
		51102/S	Extended tip, long life ø 1.1
		51102/SS	Extralongtipmm37,1 ø 1.1
10	1306	51101	Extended conical tip ø 1.0 (Lo - Amp.)
11	5.710.121	60320	Nozzle retaining cap
12		51965	Shield cup, hand ( for extended tips 51095/L, 51102/S and 51101 )
13	1344	03240	Air and power cable 6 mts 1/8" - Hand torch
		03250	Air and power cable 12 mts 1/8" - Hand torch
14		03320	Air and power cable 6 mts 1/8" - Machine torch
		03330	Air and power cable 12 mts 1/8" - Machine torch

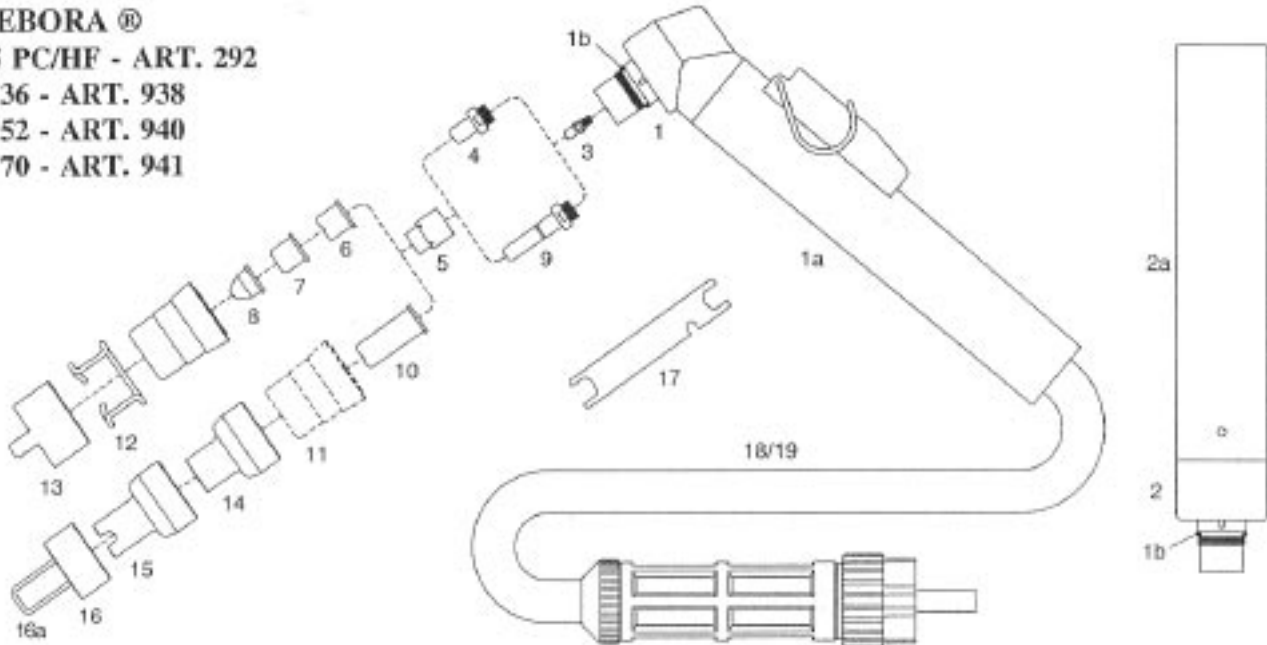
**CEBORA ®**

**35 PC/HF - ART. 292**

**P 36 - ART. 938**

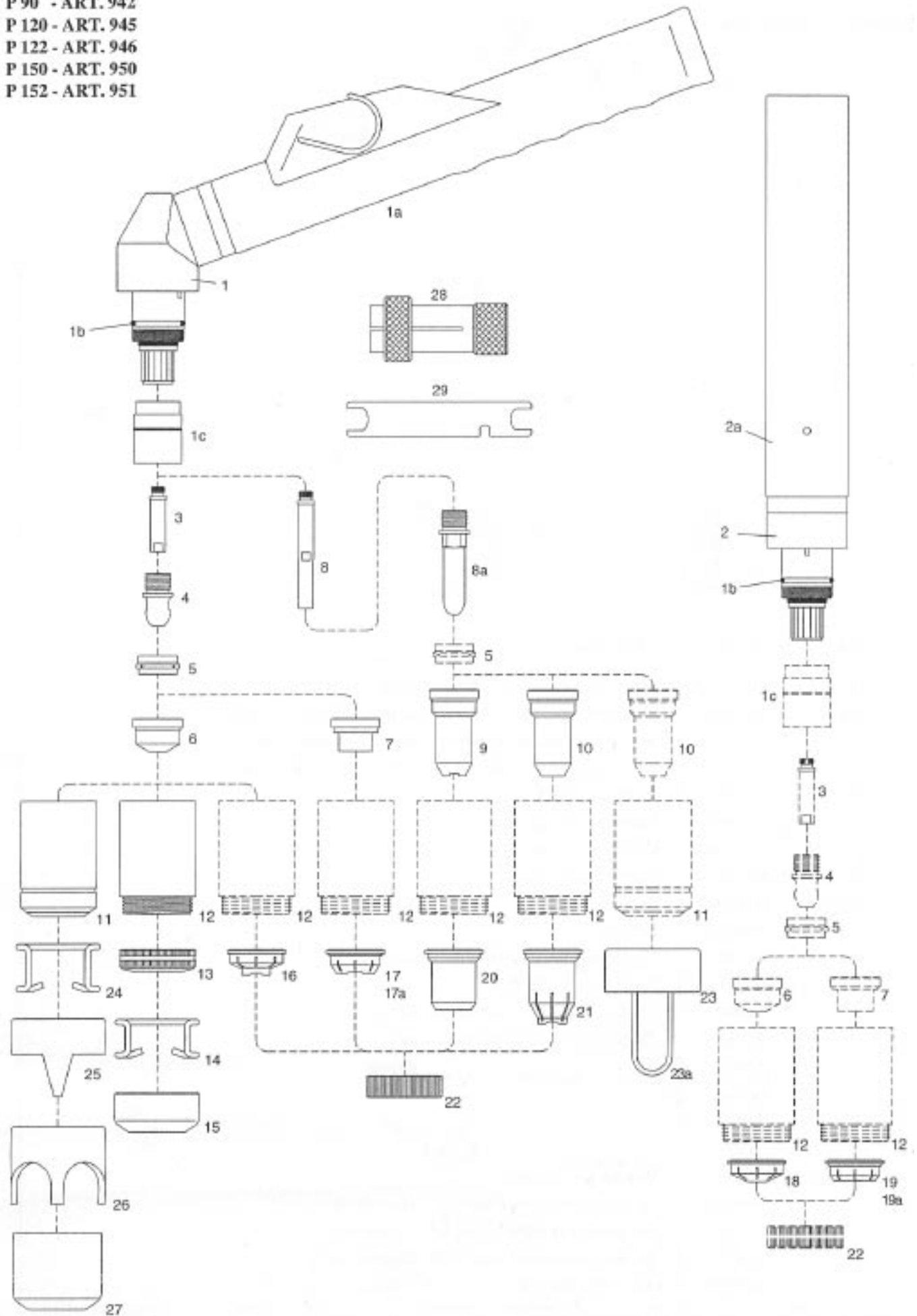
**P 52 - ART. 940**

**P 70 - ART. 941**



Item	Ref.	Code	Description
	1564	3070/C	Hand torch complete with 6 mts cable ( 1/8" connection )
	1573	03071/C	Hand torch complete with 6 mts cable ( central connector )
	1573.20	03171/C	Hand torch complete with 12 mts cable ( central connector )
	1563	03470	Machine torch complete with 6 mts cable ( 1/8" connection )
	1566	03471	Machine torch complete with 6 mts cable ( central connector )
	1566.20	03571	Machine torch complete with 12 mts cable ( central connector )
1	1351	01070	Hand torch head
1a	1356	03280/C	Handgrip with microswitch
1b	3.160067	01000.60	O - Ring ( 20 pcs. )
2	1349	03370	Machine torch head
2a	3.055.623	03310	Machine handle
3	3.065204	01070.42	Diffusor
4	1402	52551	Electrode, long life - Hf. ( Pat. Pending )
5		60001	Swirl ring - VESPEL ®
6	1309	51100.09	Tip ø 0.9 - 35A
	1396	51095	Tip long life ø 1.0 - 50A
		51100/S	Tip long life ø 1.1 - 60A
		51096	Tip long life ø 1.2 - 70A
7	1308	51100.12	Tip ø 1.2 - 70A
		51099	Flat tip ø 1.0
		51099.12	Flat tip ø 1.2
8	1305	51098	Conical tip ø 1.0 (Lo - Amp.)
		51098.12	Conical tip ø 1.2
9	1368	52553	Extended electrode, long life - Hf. ( Pat. Pending )
10	1366	51102.09	Extended tip ø 0.9 - 35A
	1395	51095/L	Extended tip long life ø 1.0 - 50A
		51102/S	Extended tip long life ø 1.1 - 60A
		51096/L	Extended tip long life ø 1.2 - 70A
11	5.710.171	60321	Nozzle retaining cap
12	1394	51901	Spacer spring ( 10 pcs. )
13	1405	60367	Double pointed spacer
14		51970	Shield cup, hand (for extended tips 51102.09 and 51095/L)
15		51971	Spacer for contact cutting, hand (for extended tips 51102/S and 51096/L)
16		60382	Spacercomplete with springs
16a		60383	Spare springs ( 20 pcs. )
17	3.045.012	60368	Wrench foreelectrode
18	1344	03240	Air and power cable 6 mts 1/8" - Hand torch
		03250	Air and power cable 12 mts 1/8" - Hand torch
19		03320	Air and power cable 6 mts 1/8" - Machine torch
		03330	Air and power cable 12 mts 1/8" - Machine torch

**CEBORA®**  
 P 90 - ART. 942  
 P 120 - ART. 945  
 P 122 - ART. 946  
 P 150 - ART. 950  
 P 152 - ART. 951



Item	Ref.	Code	Description
	1571	04050/C	Hand torch complete with 6 mts cable (1/8" connection)
	1576	04051/C	Hand torch complete with 6 mts cable (central connector)
	1578	04151/C	Hand torch complete with 12 mts cable (central connector)
	1529	04400	Machine torch complete with 6 mts cable (1/8" connection)
	1577	04401	Machine torch complete with 6 mts cable (central connector)
	1579	04501	Machine torch complete with 12 mts cable (central connector)
1	1353	02000	Hand torch head
la		04280/C	Handgrip with microswitch
lb	1398	02000.60	O-Ring (20pcs.)
lc		60080	Front insulator - VESPEL®
2	1354	04300	Machine torch head
2a	3.055.623	03310	Machine handle
3	1378	05004	Diffusor
4	1376	52540	Electrode, long life - Hf. ( Pat. Pending )
5	1377	60020	Swirl ring - VESPEL®
6	1371	51140	Tip ø 1,1
	1372	51141	Tip ø 1,35
	1373	51142	Tip ø 1,6
	1374	51143	Tip ø 1,8
	1375	51144	Gouging tip ø 3,0
		51141/S	Tip long life ø 1,35
		51142/S	Tip long life ø 1,6
		51143/S	Tip long life ø 1,8
7		51410	Contact tip ø 1,35
		51411	Contact tip ø 1,6
		51412	Contact tip ø 1,8
8		05005	Extended Diffusor
8a	1517	52550	Extended electrode, long life - Hf. ( Pat. Pending )
9	1369	51148	Contact extended tip max. 50A
10		51148.13	Extended tip ø 1,35 - 90A
		51148.16	Extended tip ø 1,6- 120A
		51148.18	Extended tip ø 1,8 - 150A
11	1389	60330	Nozzle retaining cap
12		60350	Contact nozzle retaining cap, long life
		60350/V	Contact nozzle retaining cap, long life - VESPEL®
13		51952	Spring holder protection nut
14		51911	Spacer spring for code 51952 ( 10 pcs. )
15		51953	Gouging spacer
16		51950	Spacer for contact cutting, hand
17		51930	Spacer for contact cutting, hand
17a		51920	Spacer for contact cutting, hand
18		51951	Shield cup, machine
19		51935	Shield cup, machine
19a		51925	Shield cup, machine
20		51957	Shield cup, hand ( max.50A )
21		51958	Spacer for contact cutting, hand
22		51959	Locking nut
23		60380	Spacer complete with springs
23a		60381	Spare springs (20 pcs. )
24	1386	51910	Spacerspring (10 pcs.)
25	1408	60370	Double pointed spacer
26		60371	Crown spacer
27	1406	60373	Gouging spacer
28	1509	60369	Extractor for swirl ring
29	3.045.010	60368	Wrench for electrode
		04240	Air and power cable 6 mts 1/8"- Hand torch
		04250	Air and power cable 12 mts 1/8" - Hand torch
		04320	Air and power cable 6 mts 1/8" - Machine torch
		04330	Air and power cable 12 mts 1/8" - Machine torch

# CEBORA

## CP 160

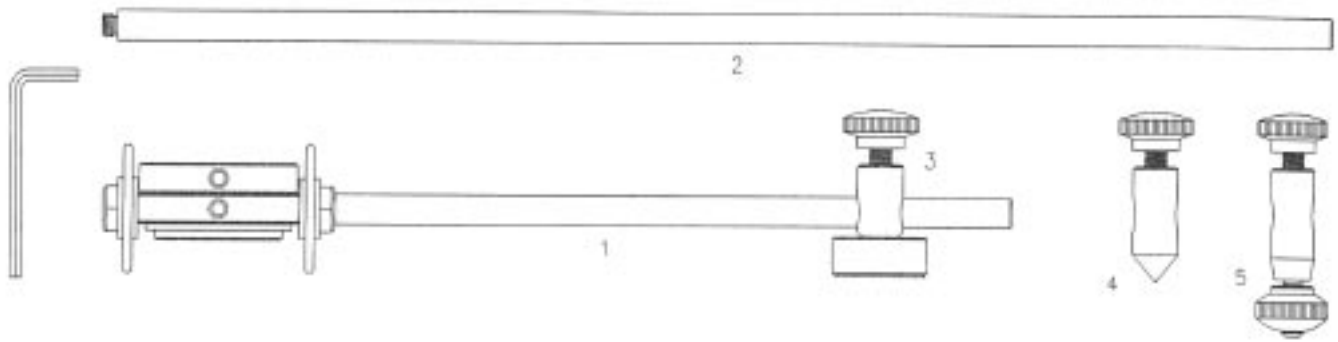


## CP 200



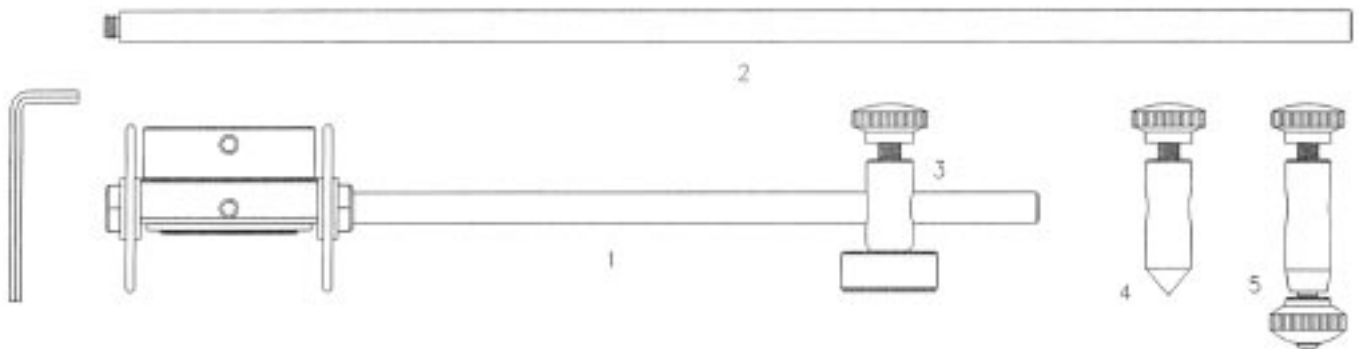
POS.	DESCRIPTION	CP 160	CP 200	POS.	DESCRIPTION	CP 160	CP 200
1	Body for manual torches	1353	1355	9	ø1,3mm nozzle Can be used btw. 40 and 90 A. Package with 5 pieces.	1372	
2	Body for profile machine torches	1354	1357		ø1,3mm nozzle. Can be used btw. 40 and 90 A. Package with 10 pieces.		1843
3	O-Ring. Package with 5 pieces.	1398			ø1,6mm nozzle. Can be used btw. 80 and 20A. Package with 5 pieces.	1373	
4	Brass diffuser Package with 5 pieces.	1378			ø1 6mm nozzle. Can be used btw. 80 and 120 A. Package with 10 pieces.		1844
5	Electrode. Can be used btw. 20 and 50 Amp. Package with 5 pieces.	1376			ø1 ,8mm nozzle. Can be used btw. 110 and 150 A. Package with 5 pieces.	1374	
	Electrode. Can be used btw. 20 and 200 Amp. Pack. with 10 pieces.		1367		ø1,8mm nozzle. Can be used btw. 110 and 150 A. Package with 10 pieces.		1845
6	Extractor for Electrode.		1508		ø3mm nozzle for gouging. Package with 5 pieces.	1375	
7	Swirl-ring.	1377			ø3mm nozzle for gouging Package with 10 pieces.		1846
8	Extractor for Swirl-ring.	1509		10	Nozzle holder Suitable for gouging too.	1902	1905
9	ø1 mm nozzle for contact cutting Can be used btw 20 and 50A Package with 10 pieces.		1840	11	Spacing springs Package with 5 pieces.	1386	1386
	ø1 mm nozzle. Can be used btw. 20 and 50 A. Package with 10 pieces.		1842	12	Spacing bush with 2 points. Package with 3 pieces.	1408	1416
	ø1,1mm nozzle. Can be used btw. 20 and 50 A. Package with 5 pieces		1371				

**CEBORA® - PROF 35 / 50 / 70**  
**EWS® - EX 40 - 2V / EX 60 / EX 100 RF**



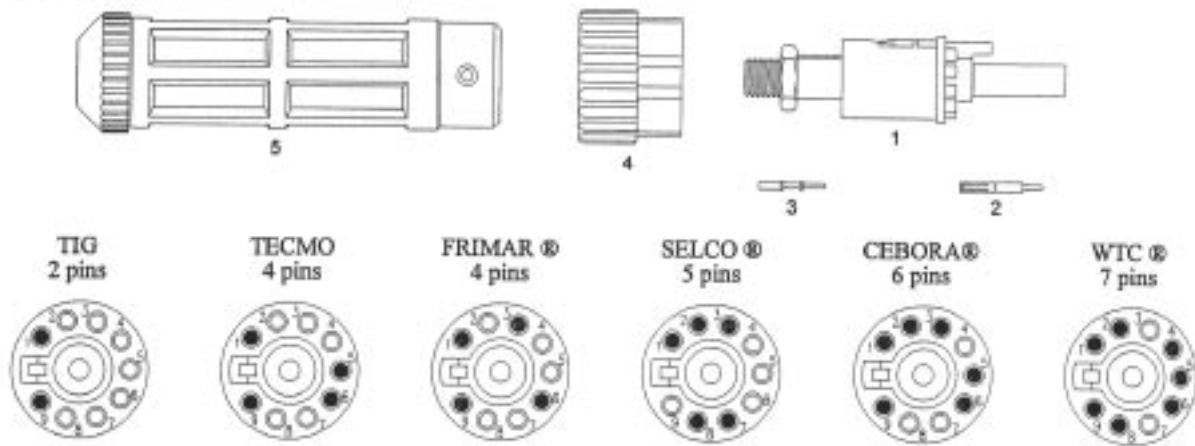
Item	Ref	Code	Description
	166	51850-CEB	Circle cutting attachment P 50
	154	51806-CEB	Cutting guide P 50
		51849	Circle cutting attachment P 70 - EX 60
		51801	Cutting guide P 70 - EX 60
		51860	Circle cutting attachment EX 100 RF
		51816	Cutting guide EX 100 RF
1		51820	Radius bar mm. 250
2		51821	Radius bar mm. 400
3		51826	Magnetic base assembly
4		51827	Free centering straight pin
5		51828	Straight locking pin

**CEBORA® - PROF 90 / 120 / 150**  
**TRAFIMET® - A 90 / 140**  
**EWS® - EX 100 / EX 100 M / EX 100 M-3V**



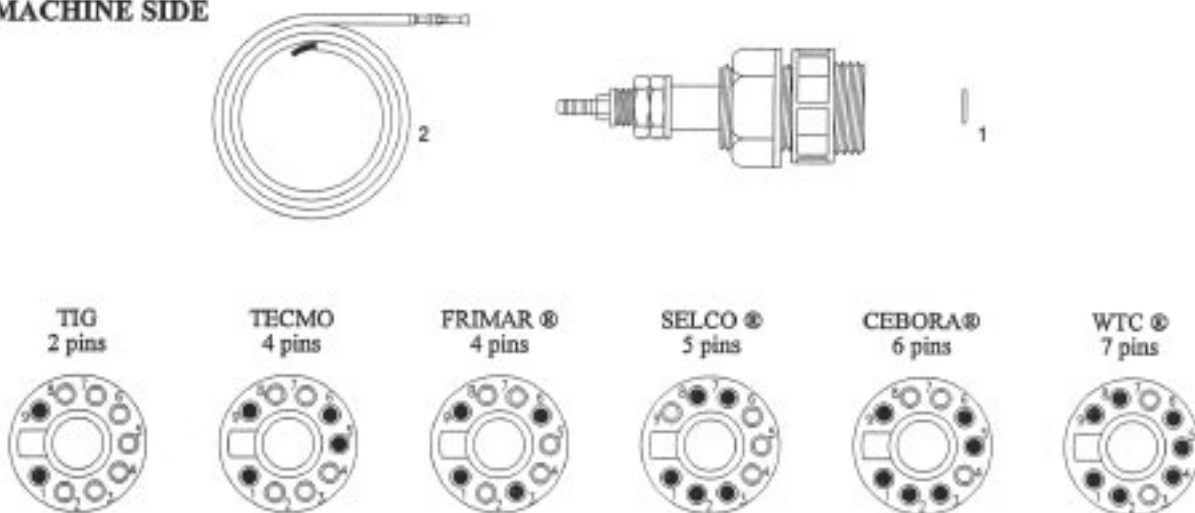
Item	Ref	Code	Description
	169	51851-CEB	Circle cutting attachment
	155	51807-CEB	Cutting guide
1		51820	Radius bar mm. 250
2		51821	Radius bar mm. 400
3		51831	Magnetic base assembly
4		51832	Free centering straight pin
5		51833	Straight locking pin

### TORCH SIDE



Item	Code	Description
	04260-TIG	Central adaptor complete 2 pins TIG
	04260	Central adaptor complete 4 pins TEC.MO
	04260-FRI	Central adaptor complete 4 pins FRIMAR
	04260-SEL	Central adaptor complete 5 pins SELCO
	04260-CEB	Central adaptor complete 6 pins CEBORA (Ref 3.080.156)
	04260-WTC	Central adaptor complete 7 pins WTC
	04260.00	Central adaptor complete without pins
1	04260.10	Adaptor body without pins
2	04260.22	Male/female pin connector, package of 20 pieces
3	04260.23	Contact pin, package of 20 pieces
4	04260.20	Adaptor nut
5	04260.21	Adaptor support

### MACHINE SIDE



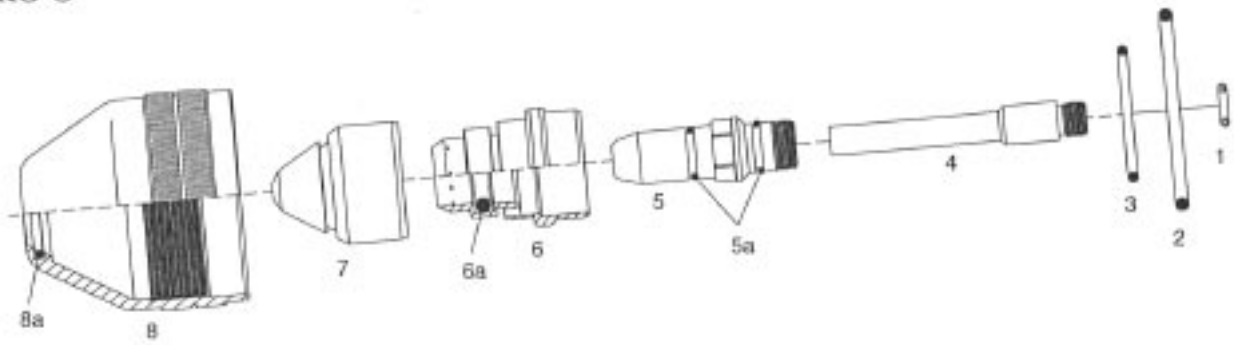
Item	Code	Description
	04265-TIG	Central adaptor complete 2 pins TIG
	04265	Central adaptor complete 4 pins TEC.MO
	04265-FRI	Central adaptor complete 4 pins FRIMAR
	04265-SEL	Central adaptor complete 5 pins SELCO
	04265-CEB	Central adaptor complete 6 pins CEBORA g) (Ref 3.080.155)
	04265-WTC	Central adaptor complete 7 pins WTC
	04265.00	Central adaptor complete without pins
1	04265.20	O - Ring, package of 20 pieces
2	04265.21	Contact pin with black lead 1 mmq x 500 mm, package of 10 pcs
	04265.22	Contact pin with red lead 1 mmq x 500 mm, package of 10 pcs
	04265.23	Contact pin with blue lead 1 mmq x 500 mm, package of 10 pcs



## KIT European standard

Item	Code	Description
	04268	European Standard safety KIT - Casing complete with magnet and spring - Anchor bracket for relais - Reed relais - n° 3 screws M5 - n° 3 threaded rivets M5 - n° 2 sets of screws and nuts M3 for relais fixing
1	04268.30	Casing complete with magnet and spring
2	04268.43	Anchor bracket for relais
3	04268.44	Reed relais

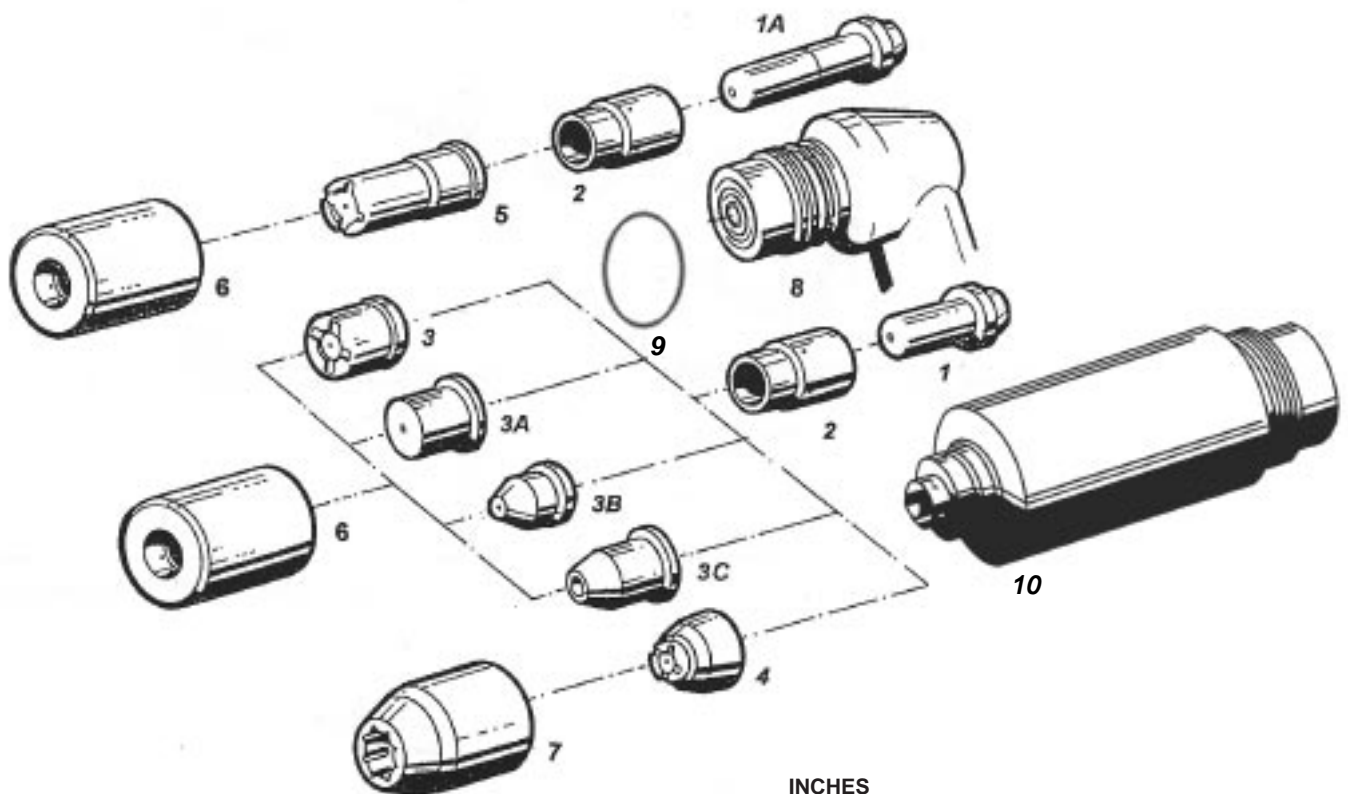
**SAF - OCP-150**  
**FRO®**



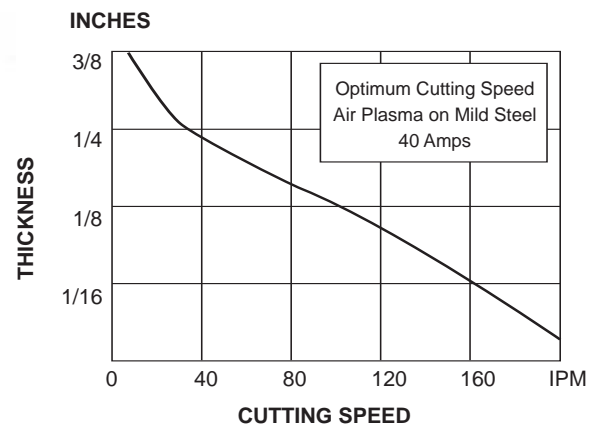
Item	Ref.	Description
1	0408-123X	O-Ring $\varnothing$ 5.28 x 1.78 Nitrile ( 20 pcs.)
2	040X-1282	O-Ring $\varnothing$ 36.17 x 2.62 Nitrile ( 20 pcs.)
3	040X-1284	O-Ring $\varnothing$ 24 x 2 Nitrile ( 20 pcs.)
4	0409-2154	Diffusor
5	0409-2184	Electrode, long life - Hf.
5a	0408-1283	O-Ring $\varnothing$ 8 x 1.25 Nitrile ( 20 pcs.)
6	0409-2170	Swirl ring OCP VD6,60A,
	0409-2169	Swirl ring OCP VD 15,120A,
6a	0409-2168	O-Ring $\varnothing$ 10 x 3 Silicone ( 20 pcs.)
7	0409-2171	Tip 15A,
	0409-2173	Tip 30A,
	0409-2174	Tip 40A,
	0409-2176	Tip 60A,
	0409-2183	Tip 90A,
	0409-2186	Tip 120A,
8	0409-2166	Nozzle retaining cap
8a	0409-2167	O-Ring $\varnothing$ 15 x 1.78 EPDM ( 20 pcs.)

Item	Ref.	Description
1	0408-2051	Electrode - Zr.
	0408-2404	Electrode - Hf.
2	0408-2052	Tip 20/40
3	0408-2261	Tip $\varnothing$ 1,0
	0408-2262	Tip $\varnothing$ 1,2
	0408-2385	Tip $\varnothing$ 1,6
4	0408-2267	TN Protection nozzle guide
	0408-2405	TI Ceramic assembly with bosses
	0408-2268	TI Ceramic guide
5	040X-2053	spacer spring ( 10 pcs. )

# HYPERTHERM MAX-40 (PAC 140)



**REQUIREMENTS:**  
 Gas: Air, Nitrogen  
 Pressure: 60 psi  
 Flow: 4,0 scfm

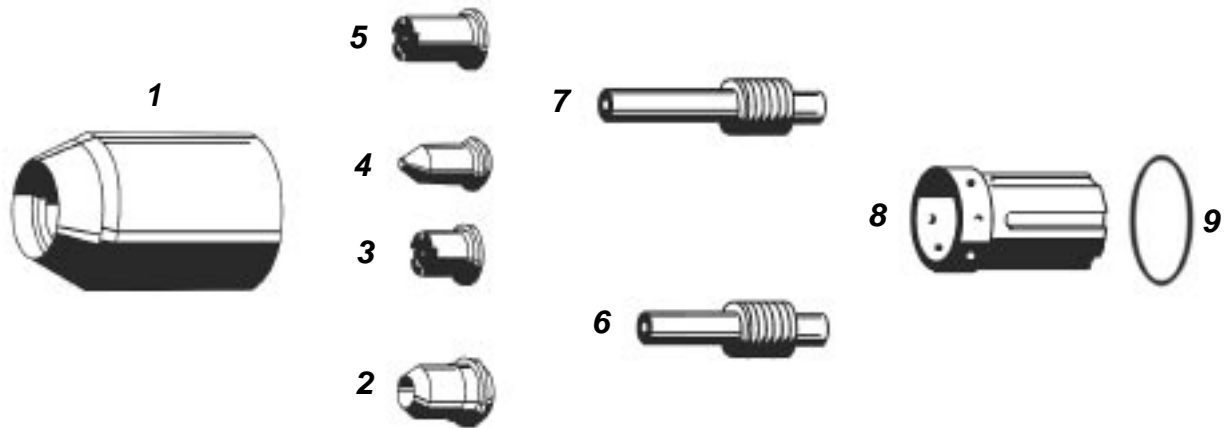


**NOTE: LONG ELECTRODES MUST BE USED WITH LONG NOZZLES, SHORT WITH SHORT.**

KEY	PART No.	DESCRIPTION	KEY	PART No.	DESCRIPTION
1	020167	Electrode (Nitrogen)	6	020104	Retaining Cap
	020103	Electrode (Air)	7	020200	Retaining Cap (HI-VIS)
1A	020467	Long Electrode (Air)	8	020122	Hand Cutting Torch
2	020101	Swirl Ring	N/S	026016	O-Ring
3	020115	Nozzle/Tip (Castle Hand)	9	044016	O-Ring
3A	020102	Nozzle/Tip(Mach.Cutting)	10	020114	Machine Cutting Torch
3B	020131	Nozzle/Tip (Pipe)	N/S	057012	75° H. Torch W/25' Leads
3C	020340	Nozzle/Tip (Gouging)	N/S	057053	Machine W/25' Leads
4	020197	Nozzle/Tip (Hi-Vis)	N/S	020120	Handle
5	020466	ExtendedNozzle	N/S	020122	Use Part #057114
			N/S	028292	Spare Parts Kit

COMPLETE TORCHES AND/OR LEADS AVAILABLE

# HYPERTHERM MAX40CS /MaX42 /MAX43



KEY	PART No.	DESCRIPTION	KEY	PART No.	DESCRIPTION
1	020364	Nozzle Retaining Cap	7	020547	Electrode - Extended (Air)
1	020930	Retaining Cap	8	020361	Swirl Ring
2	020539	Nozzle - Gouging	N/S	020480	Electrode - (Nitrogen)
3	020395	Nozzle/Tip - .042	9	044016	O-Ring
3	020350	Nozzle - 40 Amp	N/S	028413	Consumable Parts Kit
4	120023	Pipe Nozzle	N/S	020568	Torch Body With Switch
5	020546	Nozzle - Extended			
6	020351	Electrode- (Air)			

# HYPERTHERM HD-1070 (PAC 182)

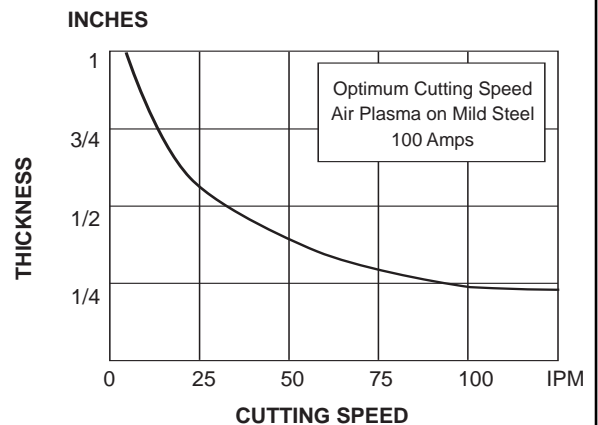
KEY	PART No.	DESCRIPTION	KEY	PART No.	DESCRIPTION
1	020644	Nozzle-H.D.15Amp	2	020637	Swirl Ring - H.D.
	020645	Nozzle-H.D.30Amp	3	120111	Electrode- H.D.15Amp
	020646	Nozzle-H.D.50Amp		120112	Electrode- H.D.50Amp
1A	020647	Nozzle-H.D.	3A	120113	Electrode-30A

# HYPERTHERM MAX -100 (PAC 130)

10

11

REQUIREMENTS:  
 Gas: Air, Nitrogen  
 Pressure: 60 psi  
 Flow: 7,2 scfm



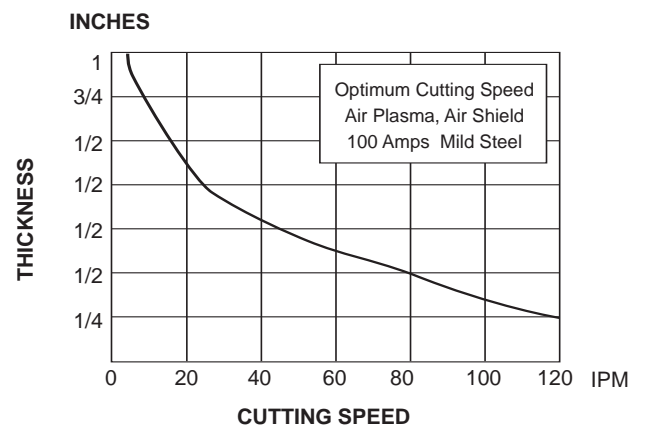
KEY	PART No.	DESCRIPTION	KEY	PART No.	DESCRIPTION
1	020191	Electrode - (Air)	6	020712	Deflector Shield Cap - Gouging
	020193	Electrode - (N2)	7	020333	Deflector Shield Cap
1A	020564	Electrode -Extended (Air)	8	020492	Shield Cap - 40Amp Mach.
2	020194	Swirl Ring		020335	Castle Cap - Shield Cap
3	020195	Nozzle/Tip - 100Amp	9	020334	Shield Cap - 80Amp Mach.
	020203	Nozzle/Tip - 40Amp	N/S	026018	O-Ring
	020345	Nozzle/Tip - 80Amp	N/S	058019	O-Ring
3A	020339	Nozzle/Tip - Gouging	10	020201	Machine Torch
3B	020337	Nozzle/Tip- 100Amp	N/S	028412	Consumable Parts Kit (80)
	020396	Nozzle/Tip - 40Amp	N/S	028325	Consumable Parts Kit
	020397	Nozzle/Tip - 80Amp	N/S	028375	Consumable Parts Kit
3C	020563	Nozzle/Tip- Extended	N/S	059078	Hand Torch Conversion Kit
4	020184	Retaining Cap	N/S	020461	Torch Head With Handle
5	020336	Sleeve -	N/S	027102	Wrench
		Shielded Cap Insulator	11	020189	Hand Torch
	020490	Sleeve -			
		Shielded Cap Insulator 40Amp			

COMPLETE TORCHES AND/OR LEADS AVAILABLE

# HYPERTHERM MAX-100D (PAC 160)

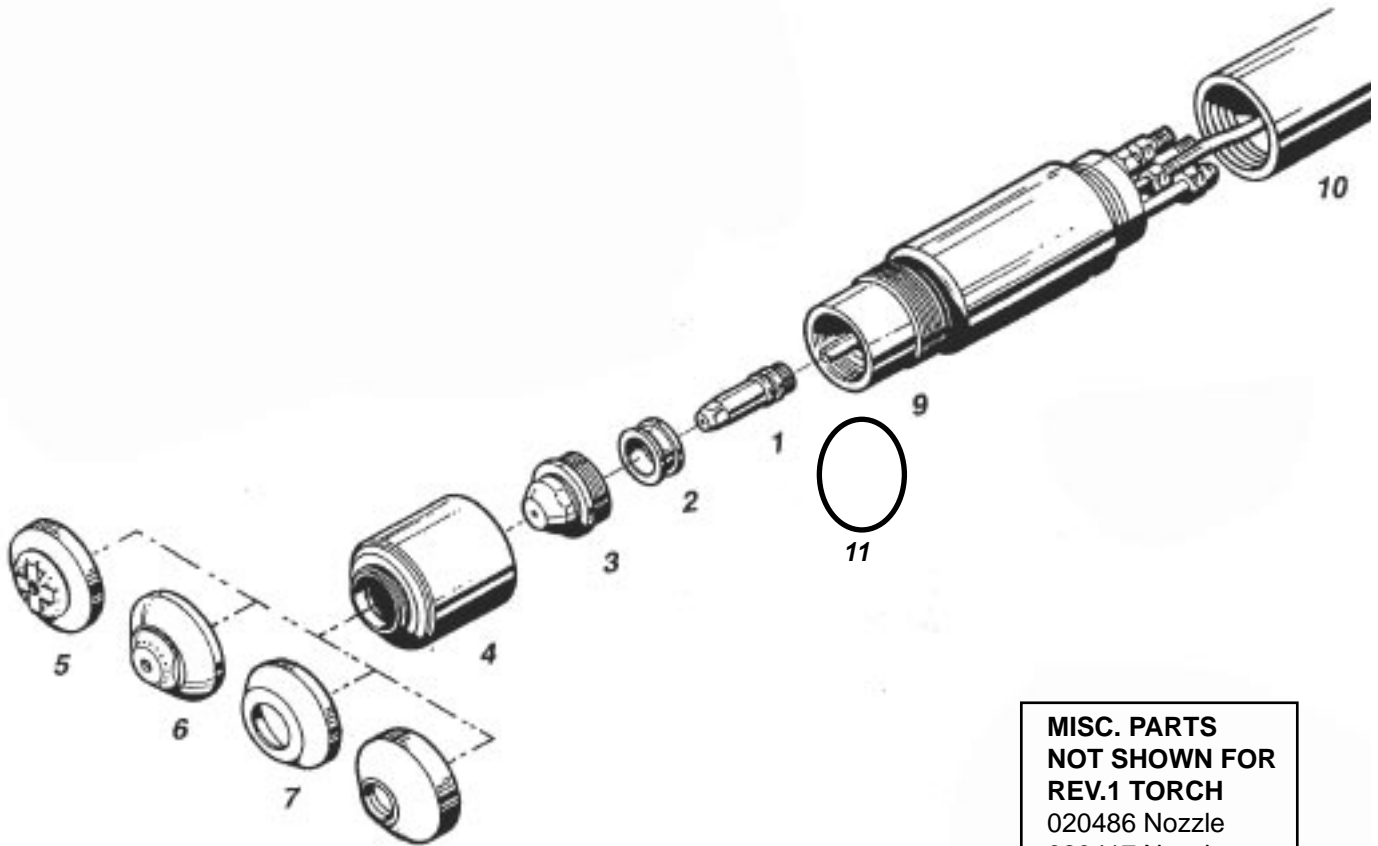
22

REQUIREMENTS:  
 Plasma Gas: Air, Nitrogen, A/H<sub>2</sub>  
 Shield Gas: Air, CO<sub>2</sub>, N<sub>2</sub>  
 Plasma Gas Pressure: 80 psi to 125 psi  
 shieldGas pressure: 80 psi to 125 psi



KEY	PART No.	DESCRIPTION	KEY	PART No.	DESCRIPTION
1	020564	Electrode Extended - (Air)	11	020922	Nozzle - Unshielded - 60Amp
	020887	Electrode Extended - (Nitrogen)	12	020921	Nozzle - Unshielded - 30/40Amp
2	020191	Electrode- (Air) -60-100Amp	13	020745	Gouging Nozzle
	020193	Electrode - Nitrogen-Argon/Hydrogen		020704	Gouging Nozzle
3	020951	Electrode -30/40Amp	14	020846	Retaining Cap - 100Amp
4	020744	Electrode- (Air)	15	020756	Retaining Cap - 60Amp
5	020703	Electrode - Argon/Hydrogen	16	020699	Retaining Cap - Gouging
6	020706	Swirl Ring	17	020333	Deflector - 100 - 60 - 30/40Amp
7	020950	Swirl Ring	18	020334	Shield - 100Amp - Mach
8	020750	Swirl Ring	19	020335	Shield- 100Amp- Hand
9	020754	Nozzle - Extended - 100Amp	20	020492	Shield - 60Amp - Mach/Hand
10	020705	Nozzle - Shielded - 100Amp	21	020712	Shield - 100Amp
	020753	Nozzle - Shielded - 60Amp	22	020713	Machine Torch

# HYPERTHERM MAX 200

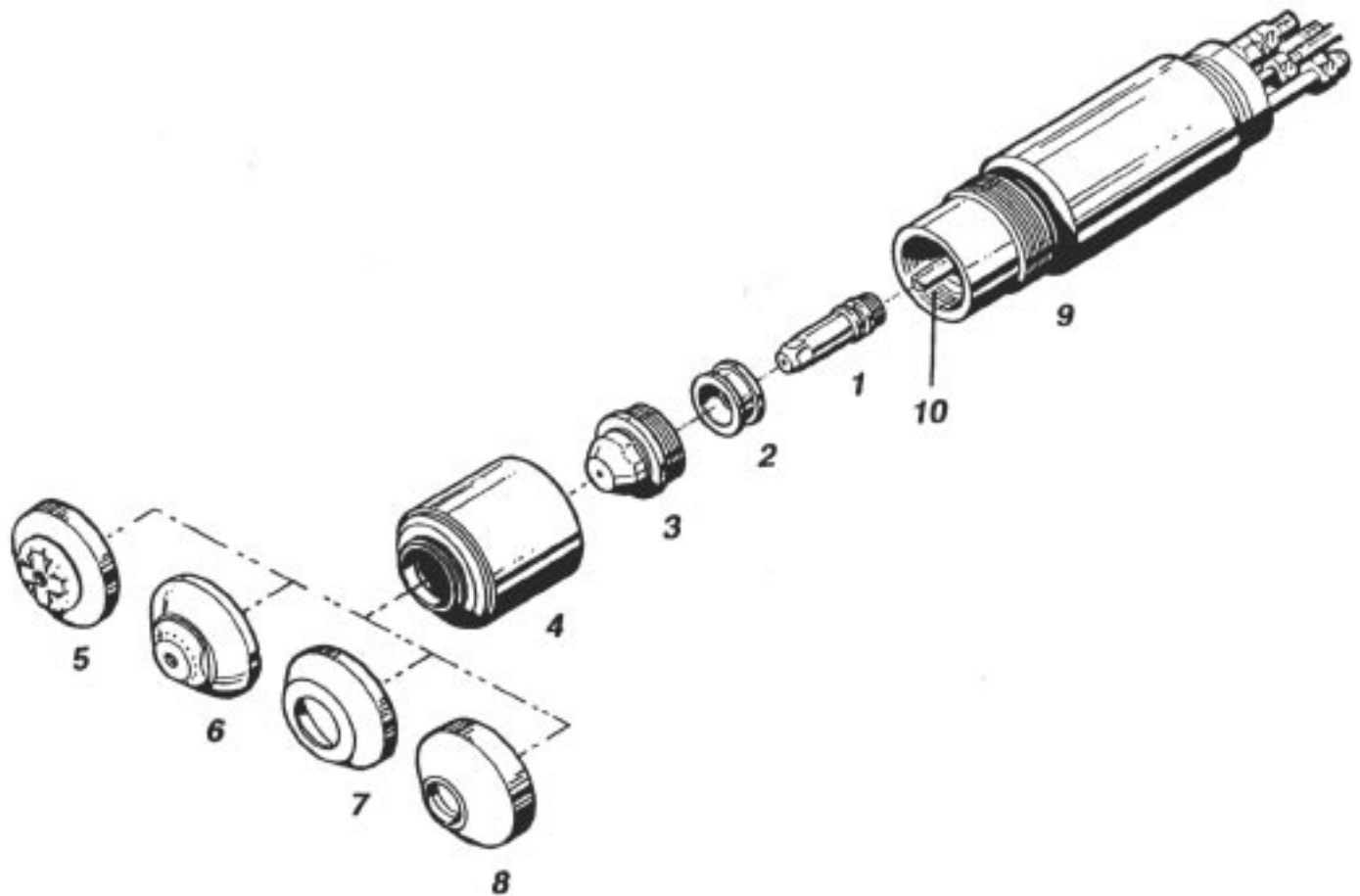


**MISC. PARTS  
NOT SHOWN FOR  
REV.1 TORCH**  
 020486 Nozzle  
 020417 Nozzle  
 020418 Nozzle  
 020447 Nozzle  
 020515 Nozzle  
 020416 Swirl Ring  
 020425 Swirl Ring

KEY	PART No.	DESCRIPTION	KEY	PART No.	DESCRIPTION
	020414	Electrode - Air, O <sub>2</sub>		020618	Shield Cap 100Amp Water Muffler
	020415	Electrode - N <sub>2</sub>		020566	Shield Cap 200Amp Water Muffler
2	020604	Swirl Ring - 200Amp O <sub>2</sub>	6	20424	Shield Cap 200Amp-.086
	020613	Swirl Ring - 40Amp Air		20602	Shield Cap AR/HYD
	020617	Swirl Ring - 100Amp O <sub>2</sub>	7	020688	Shield 40 Amp
	020607	Swirl Ring - 100/200Amp Air,N <sub>2</sub> ArH	8	020485	Shield Cap 200Amp-Gouging
3	020616	Nozzle - 100Amp O <sub>2</sub>	9	020470	Machine Torch Main Body
	020608	Nozzle - 200Amp Air,N <sub>2</sub> ArH	10	020431	Sleeve
	020605	Nozzle/Tip -200Amp O <sub>2</sub>	N/S	020484	90°Torch Body
4	020423	Shield Sleeve		020611ATTC	Nozzle - 100Amp Air,N <sub>2</sub> ArH
5	020446	Shield Cap 200Amp-Drag	11	044027	O-Ring

COMPLETE TORCHES AND/OR LEADS AVAILABLE

# HYPERTHERM HT-2000



KEY	PART No.	DESCRIPTION	KEY	PART No.	DESCRIPTION
	020664	Electrode O <sub>2</sub> Air	4	020423	Shield Sleeve
	020415	Electrode N <sub>2</sub> /H35	5	020446	Shield - 200Amp - Hand
2	020678	Swirl Ring - 200Amp -O <sub>2</sub>		020568	Water Muffler - 200Amp
	020679	Swirl Ring - 200Amp Air		020618	Water Muffler - 100Amp
	020607	Swirl Ring - 100/200Amp N <sub>2</sub> /Air H35		020448	Shield - 100Amp
	020613	Swirl Ring - 40 Amp Air/O <sub>2</sub>	6	020424	Shield Cap - 100/200Amp Mach.
3	020605	Nozzle - 200 Amp O <sub>2</sub> H35		020802	Shield Cap - 200AMP H35
	020608	Nozzle - 200 Amp Air N <sub>2</sub> H35	7	020688	Shield - 40Amp
	020611ATTC	Nozzle- 100Amp Air, N <sub>2</sub> ArH	8	020485	Shield Cap - 200Amp - Gouging
	020612	Nozzle - 40Amp Air	9	020470	Torch Body
	020615	Nozzle - 200Amp Gouging	10	020913	Water Tube
	020616	Nozzle - 100Amp O <sub>2</sub>			
	020689	Nozzle - 40 Amp Air			
	020690	Nozzle - 100Amp O <sub>2</sub>			



# HYPERTHERM HT-400

KEY	PART No.	DESCRIPTION	KEY	PART No.	DESCRIPTION
	020082	Electrode- Nitrogen	3A	020086	Nozzle/Tip- Oxygen.099
1A	020081	Electrode - O <sub>2</sub>		020392	NozzleOxygen .099 CCW
2	020039	Swirl Ring- N <sub>2</sub> - .120 - .187	4	020087	Nozzle Retaining Cap
	020042	Swirl Ring - N <sub>2</sub> - CCW .120 - .187	4A	020246	Nozzle Retaining Cap
2A	020096	Swirl Ring - Oxygen		020579	Nozzle Retaining Cap Vectra
	020097	Swirl Ring - Oxygen CCW	5	020080	Torch Main Body
	020380	Swirl Ring - .099		020080-R	Torch Main Body Rebuild
	020391	Swirl Ring- CCW- .099	6	020041	Sleeve - Insulator
3	020084	Nozzle/Tip - N <sub>2</sub> - .166			
	020089	Nozzle Tip - N <sub>2</sub> - .120			

COMPLETE TORCHES AND/OR LEADS AVAILABLE

# HYPERTHERM HT-4001

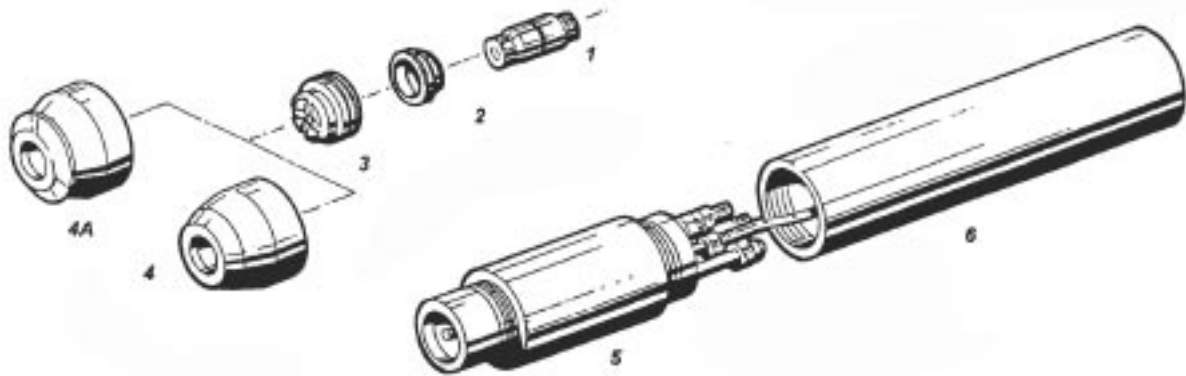
KEY	PART No.	DESCRIPTION	KEY	PART No.	DESCRIPTION
1	020990	Water Tube 400 / 600 / 170		020282	Nozzle - .166 N <sub>2</sub>
2	020285	Electrode - N <sub>2</sub>		020283	Nozzle - .187 N <sub>2</sub>
2A	020663	Electrode-O <sub>2</sub> - 260Amp		020284	Nozzle - .220 N <sub>2</sub>
	120090ATTC	Electrode - O <sub>2</sub> - 340 Amp	4A	020086	Nozzle - O <sub>2</sub>
3	020039	Swirl Ring - N <sub>2</sub> - .120 -.166 -.1875		020580	Retaining Cap (Standard Vectra)
	020042	Swirl Ring - N <sub>2</sub> - .120 -.166 -.187CCW		020286	Retaining Cap N2 Std. (Vespel)
	020079	Swirl Ring - N <sub>2</sub> - .220 CCW	5A	020579	Retaining Cap Tapered (Vectra)
	020040	Swirl Ring- N <sub>2</sub> - .220		020246	Retaining Cap Tapered (Vespel)
3A	020623	Swirl Ring - O <sub>2</sub> - 260 Amp			
	120135	Swirl Ring - O <sub>2</sub> -340 Amp			
4	020281	Nozzle- .120 N <sub>2</sub>			

COMPLETE TORCHES AND/OR LEADS AVAILABLE

# HYPERTHERM HT-4001 PAC 620 /BEVELING

KEY	PART No.	DESCRIPTION	KEY	PART No.	DESCRIPTION
	020968	Electrode - N2		020966	Nozzle - N2-.187
2	020975	Electrode - O <sub>2</sub>		020967	Nozzle - N <sub>2</sub> - .220
3	020039	Swirl Ring - N <sub>2</sub> -.120 -.166 -.187 6		020973	Nozzle - O <sub>2</sub> - 099
	020042	Swirl Ring - N <sub>2</sub> -CCW -.120-.166-.187		020974	Nozzle- O <sub>2</sub> -CCW
	020040	Swirl Ring - N <sub>2</sub> -.220	7	120004	Retaining Cap - N <sub>2</sub> (Vectra)
	020079	Swirl Ring - N <sub>2</sub> -CCW -.220		020969	Retaining Cap - N <sub>2</sub> (Vespel)
4	020623	Swirl Ring - O <sub>2</sub>	8	120030	Retaining Cap - O <sub>2</sub> (Vectra)
	120015	Swirl Ring - O <sub>2</sub> -CCW		020029	Retaining Cap - O <sub>2</sub> (Vespel)
5	020964	Nozzle - N <sub>2</sub> -.120	9	020991	WaterTube - N <sub>2</sub>
	020965	Nozzle - N <sub>2</sub> -.166	10	020992	WaterTube - O <sub>2</sub>

## HYPERTHERM PAC-500



KEY	PART No.	DESCRIPTION	KEY	PART No.	DESCRIPTION
	020038	Electrode		020050	Nozzle/Tip - .120
2	020039	Swirl Ring - .120 - .187	4	020034	Nozzle Retaining Cap Tapered
	020040	Swirl Ring- .220		020610	Retaining cap
	020048	Swirl Ring - .250	4A	020043	Nozzle Retaining Cap Flared
	020042	Swirl Ring - .120- .187 CCW	N/S	025028	O-Ring Kit
	020079	Swirl Ring - .220 CCW	5	020030	Torch Main Body
3	020035	Nozzle/Tip - .166	6	020030-R	Torch Main Body Rebuild
	020036	Nozzle/Tip - .187		020041	Insulator Sleeve
	020037	Nozzle/Tip - .220			
	020047	Nozzle/Tip - 250 Argon			

COMPLETE TORCHES AND/OR LEADS AVAILAEBLE

## HYPERTHERM PAC 600

KEY	PART No.	DESCRIPTION	KEY	PART No.	DESCRIPTION
1	020285	Electrode		020283	Nozzle-.187
1A	020721	Electrode		020284	Nozzle-.220
2	020039	Swirl Ring - .120- .187	3A	020719	Nozzle
	020040	Swirl Ring .220	4	020286	Retaining Cap
	020042	Swirl Ring - .120- .187 - CCW		020582	Retaining Cap Vectra
	020079	Swirl Ring - .220 - CCW		020579	Retaining Cap Tapered Vectra
2A	020720	Swirl Ring	5	020080	Torch Main Body
3	020281	Nozzle-.120	6	020041	Insulator sleeve
	020282	Nozzle - .166	7	020990	Water Tube



## T. BENTSEN AS

Krokatjønnveien 13, 5147 FYLLINGSDALEN • NORWAY  
Phone + 47 55 15 40 00 • Fax + 47 55 15 40 10

[bentsen@tbentsen.no](mailto:bentsen@tbentsen.no)