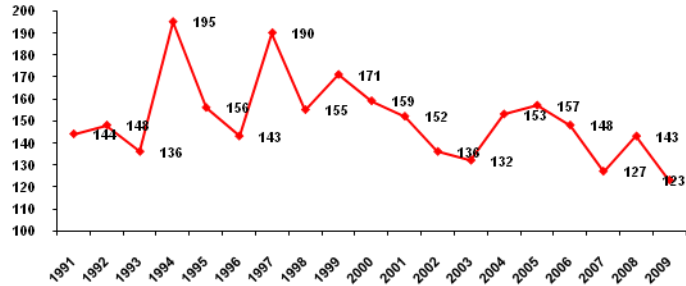


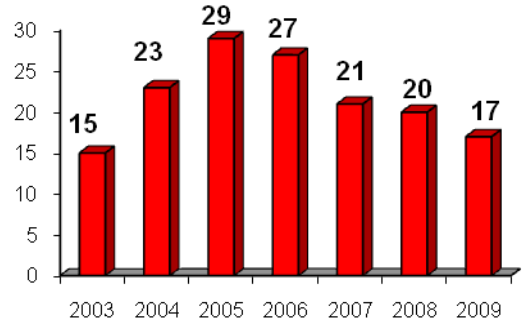
2009 CFOI Press Release Information
Bureau of Labor Statistics Census of Fatal Occupational Injuries

- August 19, 2010 the Bureau of Labor Statistics released data reporting the total number of workplace fatalities in 2009. Other detailed numbers regarding injuries and illnesses will be released in October this year.
- In Indiana, the number of workplace fatal injuries is the lowest reported since CFOI began in 1991. A total of 123 Hoosiers suffered a fatal injury while working in 2009. This is 20 fewer than in 2008 and 17% below the 10-year average.
- For the fourth year in a row fatalities in the construction industry decreased. 2009 saw 3 fewer fatalities than 2008, representing a 15% reduction. Construction is tied for the second most common industry for worker fatalities with 17. The leading industry is Agriculture with 23 fatalities.
- Workplace fatalities in the manufacturing industry decreased in 2009. There were only 12 fatalities in Indiana's largest industry. This represents a 20% reduction for this industry over 2008.
- The Transportation and Warehousing industry had the same number of fatalities as in 2008. This maintains the great decrease over previous years. The 2003-2007 average was over 28 fatalities annually. The other previous low was in 2003 when there were 20 fatalities.
- The top events leading to a fatality were Highway Accidents (20%), Falls (16%) and Assaults and violent acts (16%).
- A further analysis of fatality data will be available on August 20 at www.in.gov/dol/stats or through the Publication link at www.in.gov/dol.

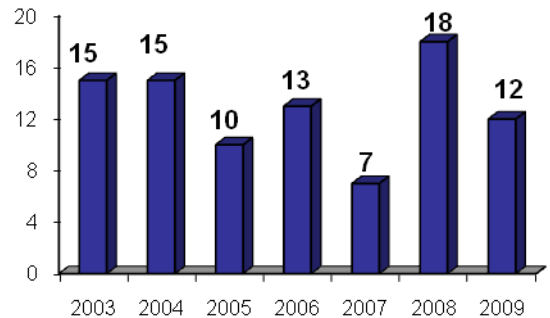
Indiana Fatalities



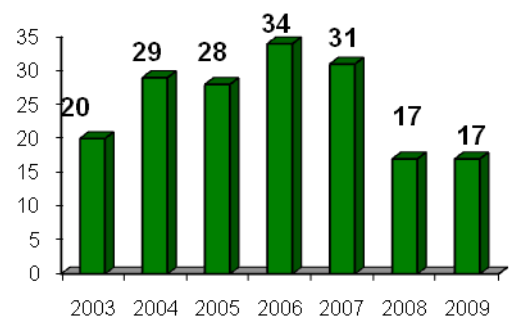
Construction Fatalities



Manufacturing Fatalities



Transportation & Warehousing Fatalities



CFOI Highlights

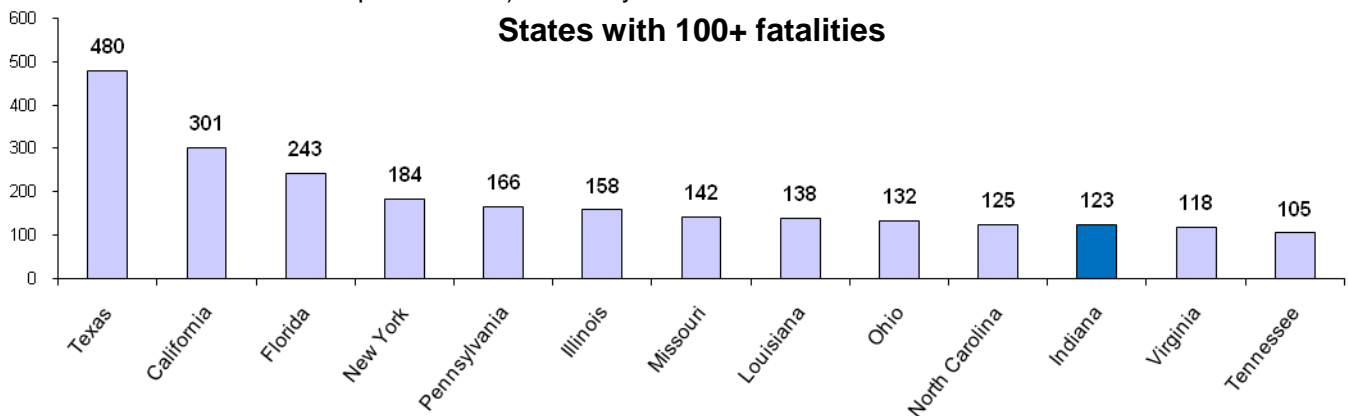
- 123 Fatal Injuries.
- Top industries:
 - Agriculture (23)
 - Construction (17)
 - Transportation & Warehousing(17)
- Top three events
 - Highway Accidents (25)
 - Falls (20)
 - Assaults and Violent Acts (20)
- Significant Industry decreases
 - Retail Trade: 13 in 2008 to 8 in 2009 - 38% decrease
 - Manufacturing: 18 in 2008 to 12 in 2008 - 22% decrease
- 2009 Worker characteristics
 - 95% men 5% women
 - 89% white 7% black 2% latino/hispanic 2% asian
 - Most common age bracket is 45-54 year olds with 27%
 - 29% of workers were self-employed

National Comparison

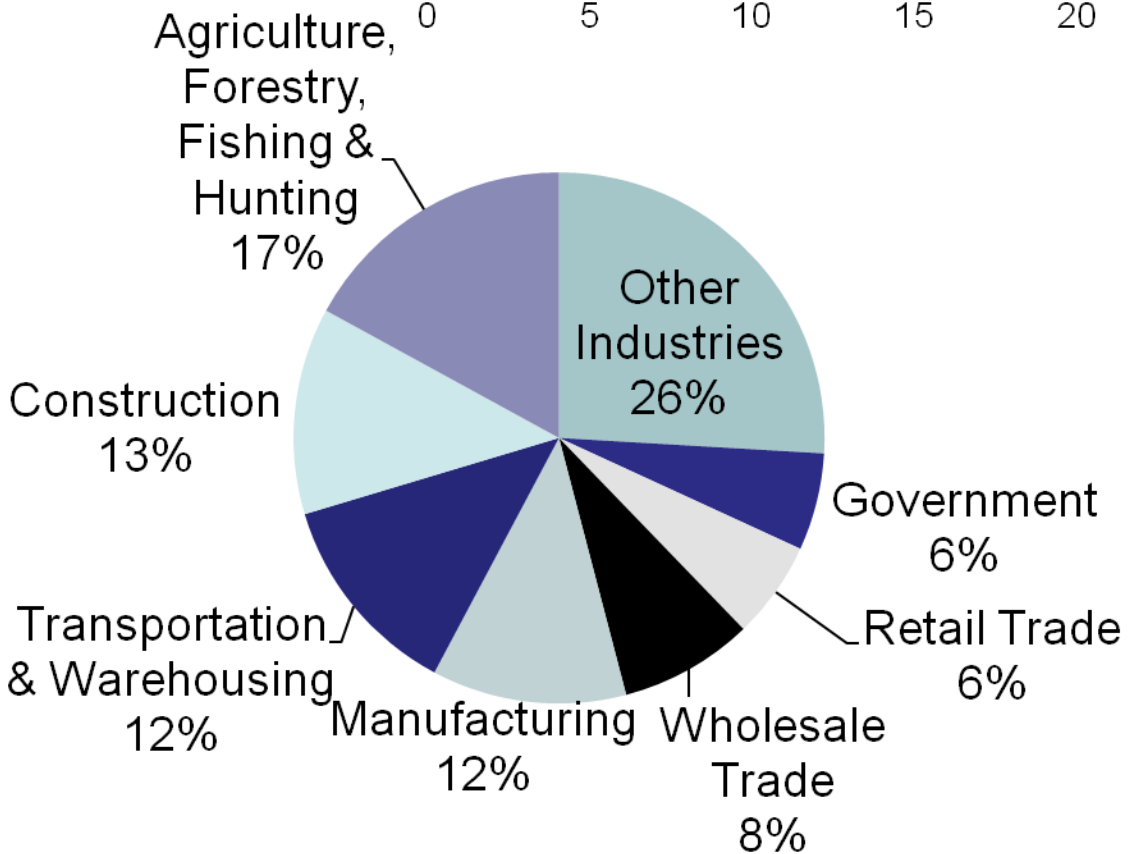
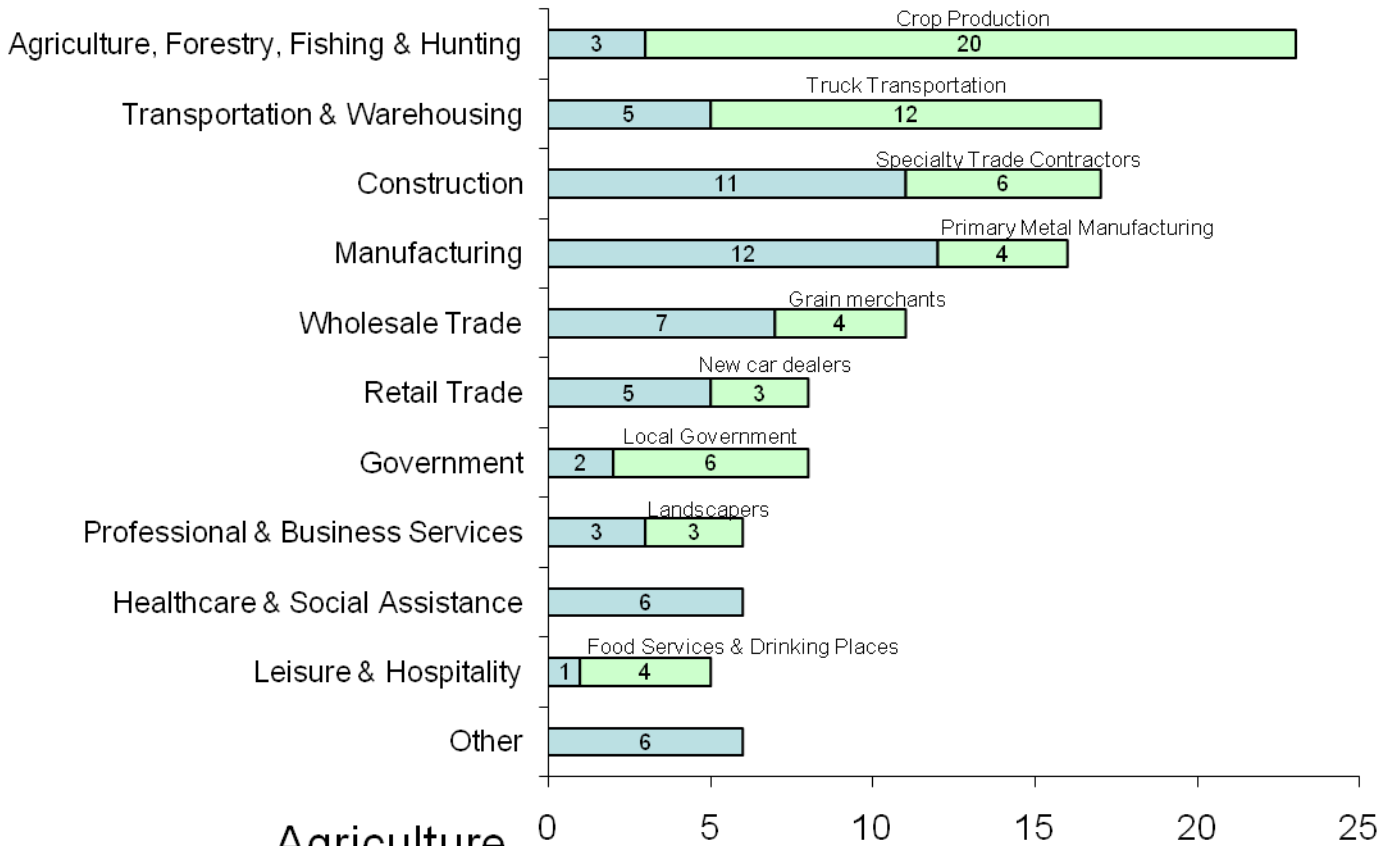
- US fatalities decreased 16% from 2008 to 2009 (from 5,214 in 2008 to 4,340 in 2009). Indiana fatalities decreased 14% (143 to 123).
- Construction is the #1 Industry with fatalities in the US. In Indiana the industry with the most fatalities is Agriculture.

| Top Five Industries | | | |
|--|-----|--|---------|
| Industry | US | Industry | Indiana |
| Construction | 816 | Agriculture, forestry, fishing & hunting | 23 |
| Transportation & Warehousing | 579 | Construction | 17 |
| Agriculture, forestry, fishing & hunting | 551 | Transportation & Warehousing | 17 |
| Government | 304 | Manufacturing | 12 |
| Professional & Business | 394 | Wholesale Trade | 11 |

- In 2009 Indiana was #11 for the **raw number** of fatalities by state. (Texas is #1 with 480 fatalities and the low was New Hampshire with 6). Rates by state are unavailable.

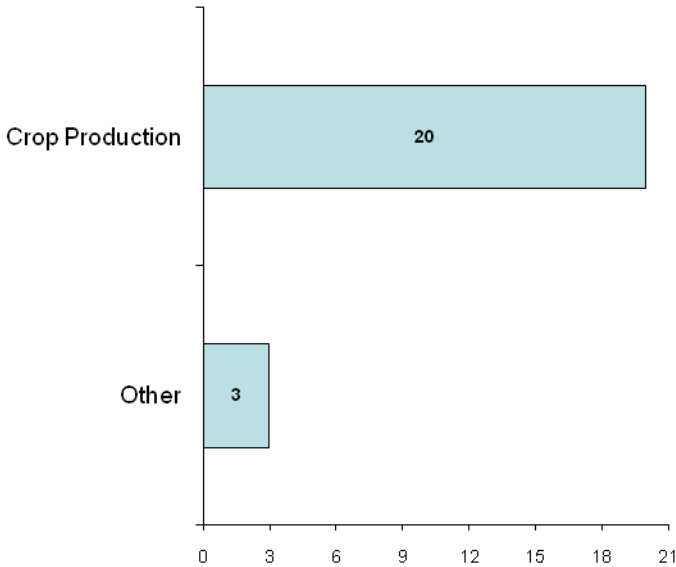


Industry

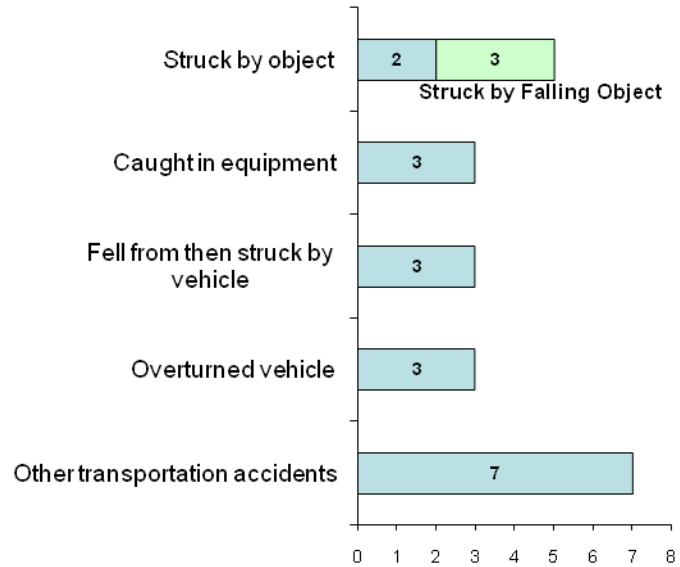


Agriculture Industry

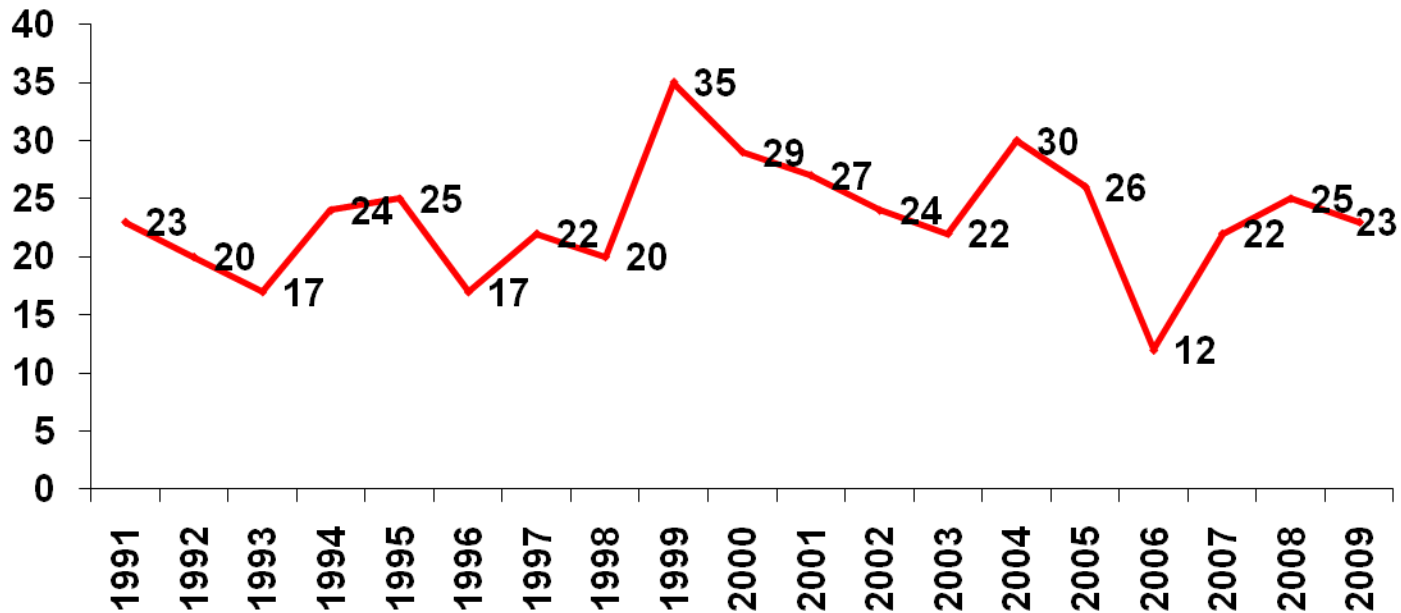
Sub-Industry Fatalities



Fatal Events

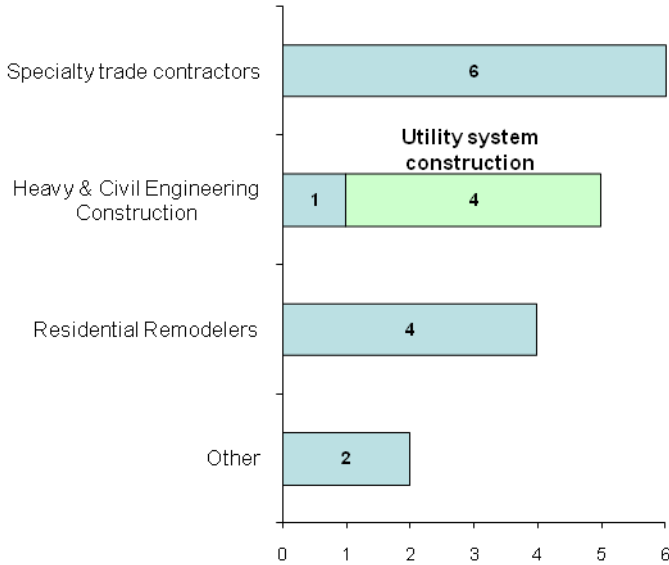


19-year Trend



Construction Industry

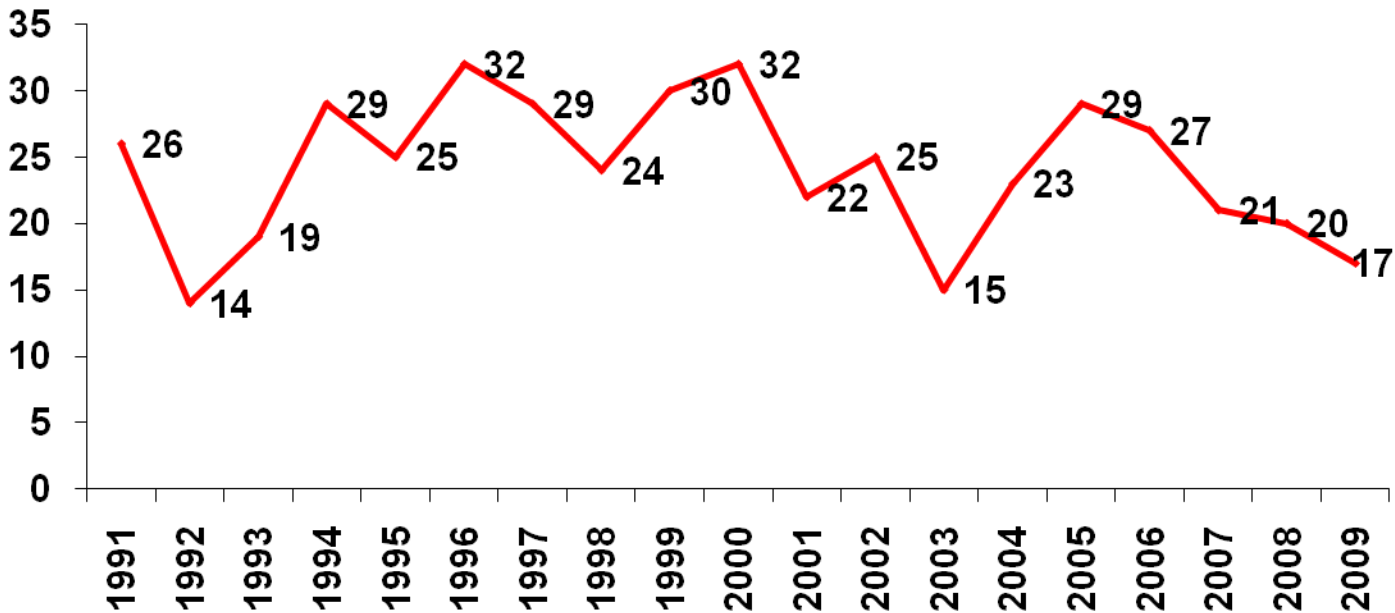
Sub-Industry Fatalities



Fatal Events



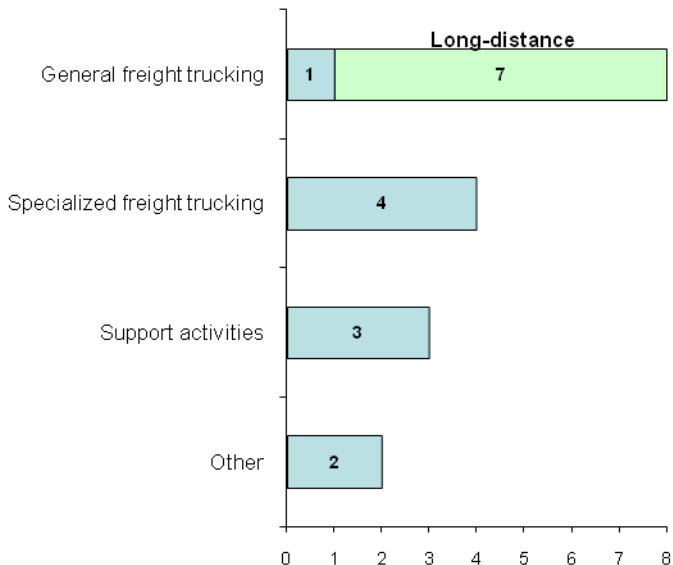
19-year Trend



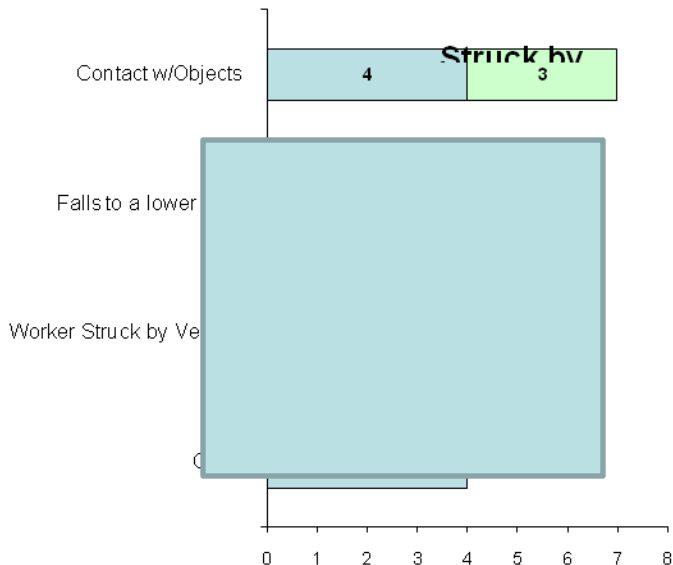
- Has had a reduction every year since 2005.
- In the past 10 years Construction has averaged 24 fatalities per year. 2009 is 30% below this average.
- The most recent high fatality count for construction was 32 in the year 2000.

Transportation & Warehousing Industry

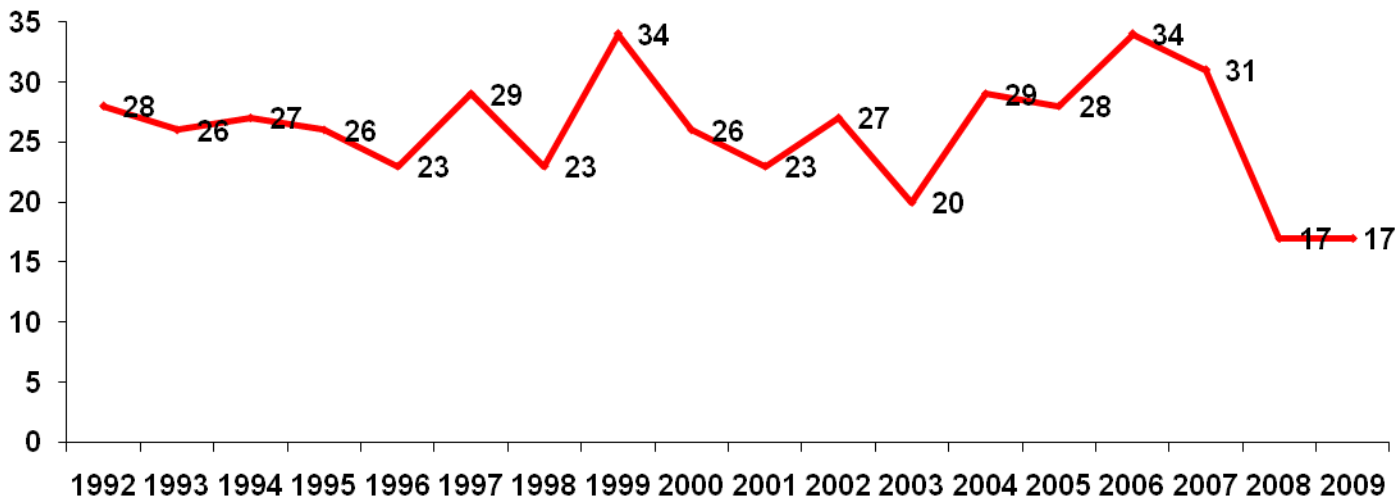
Sub-Industry Fatalities



Fatal Events

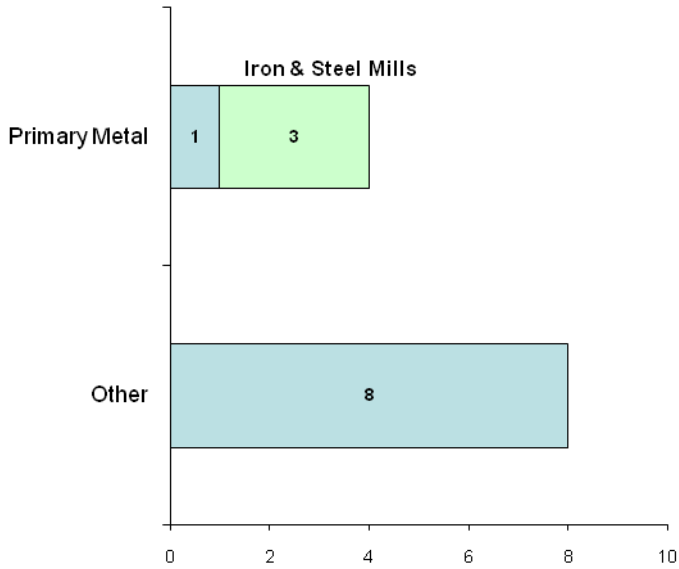


19-year Trend

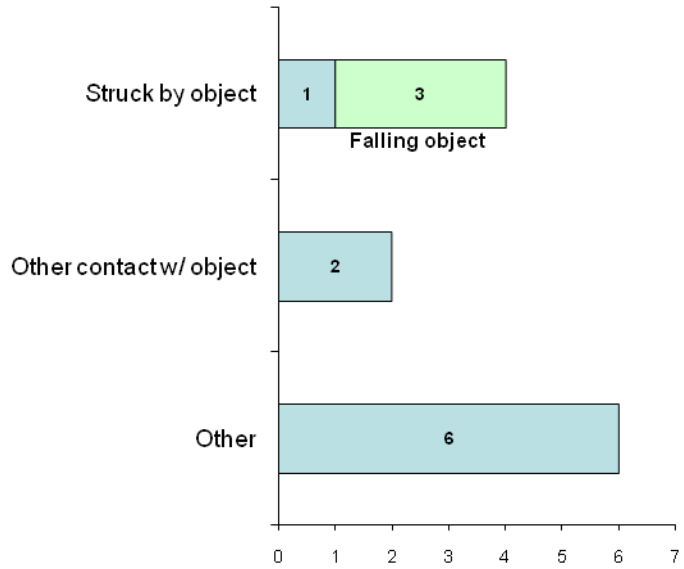


Manufacturing Industry

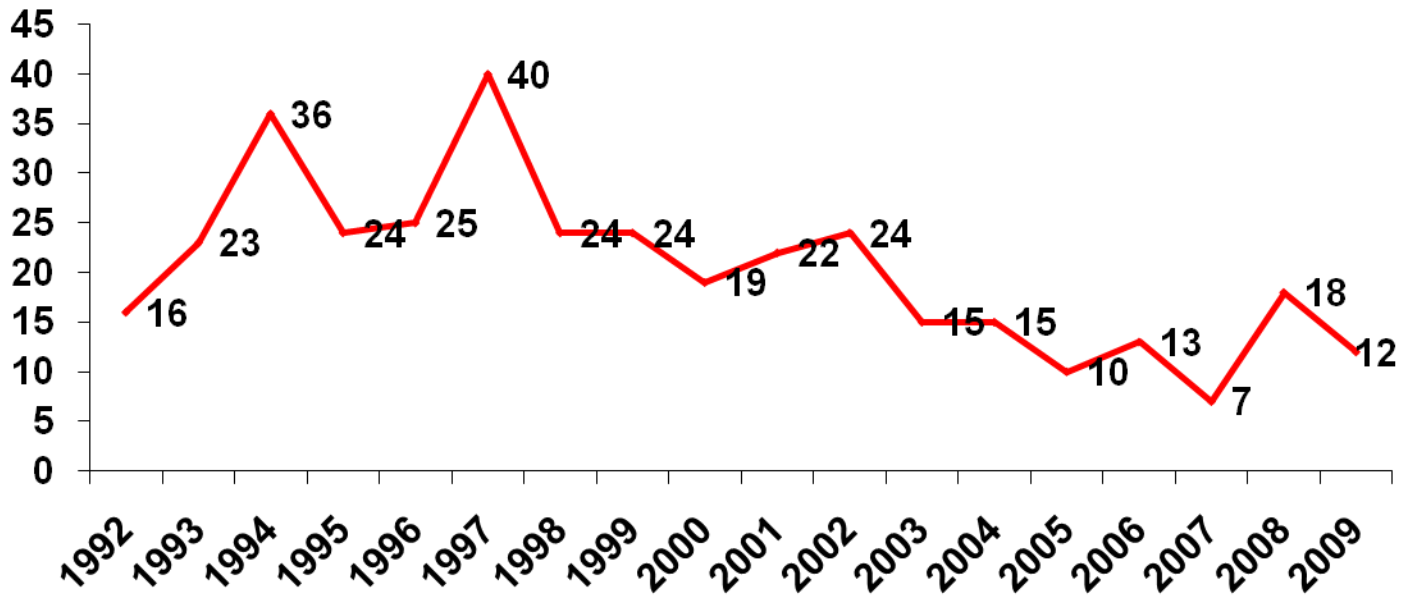
Sub-Industry Fatalities



Fatal Events

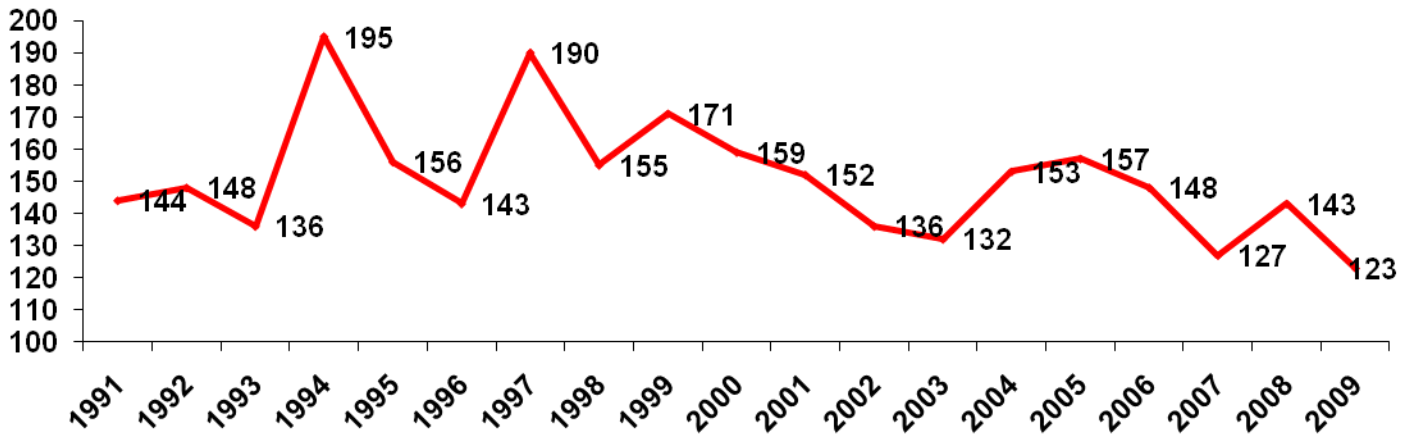


19-year Trend

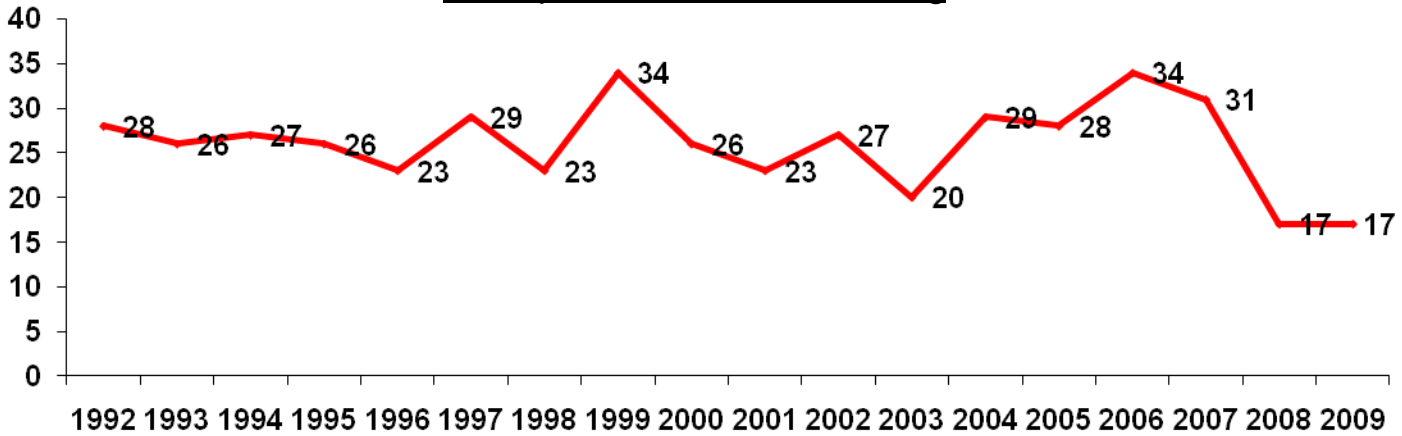


Other Industry Trends

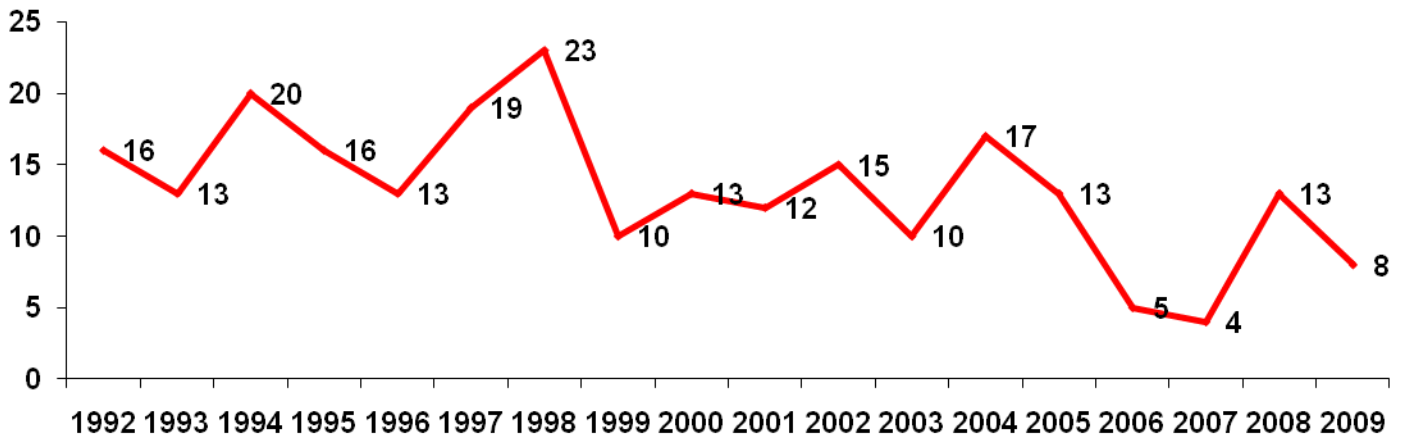
Indiana Total



Transportation & Warehousing

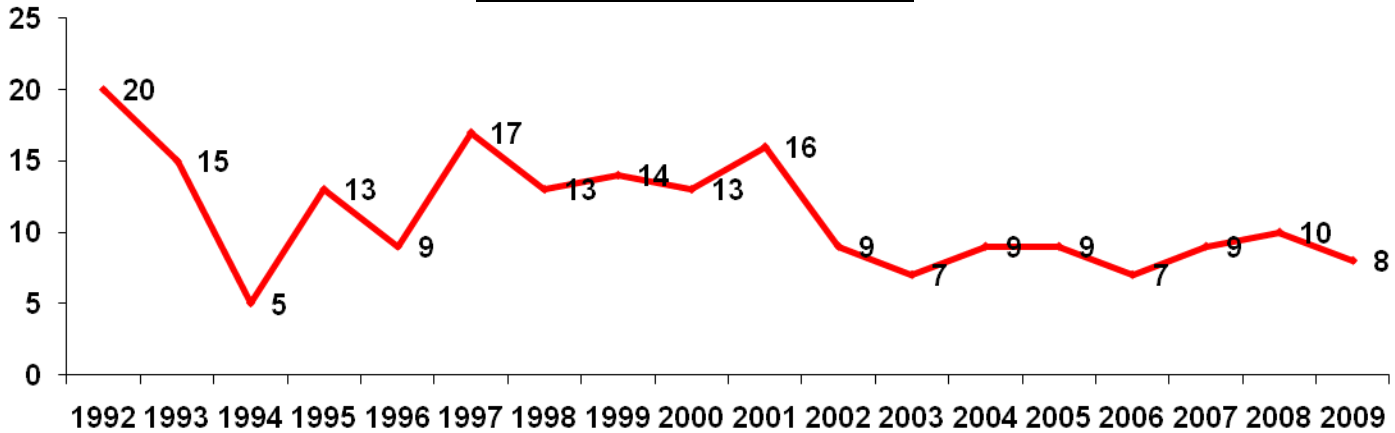


Retail Trade

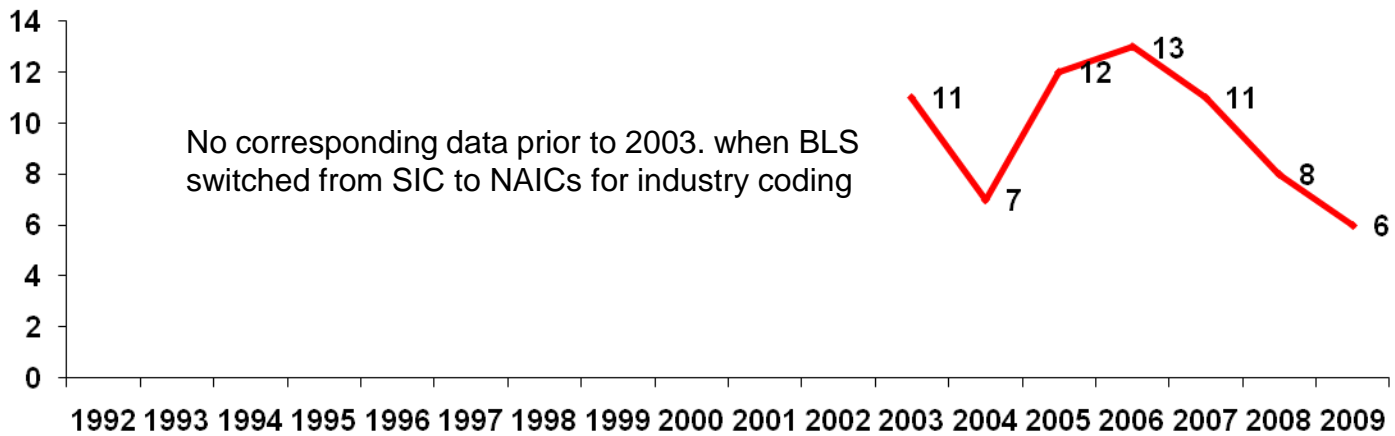


Other Industry Trends

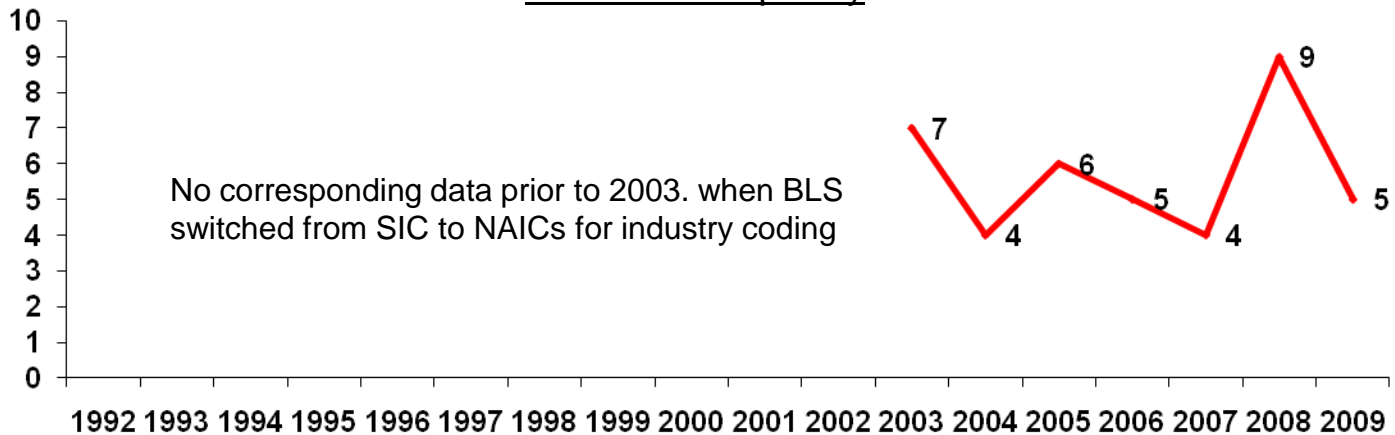
State & Local Government



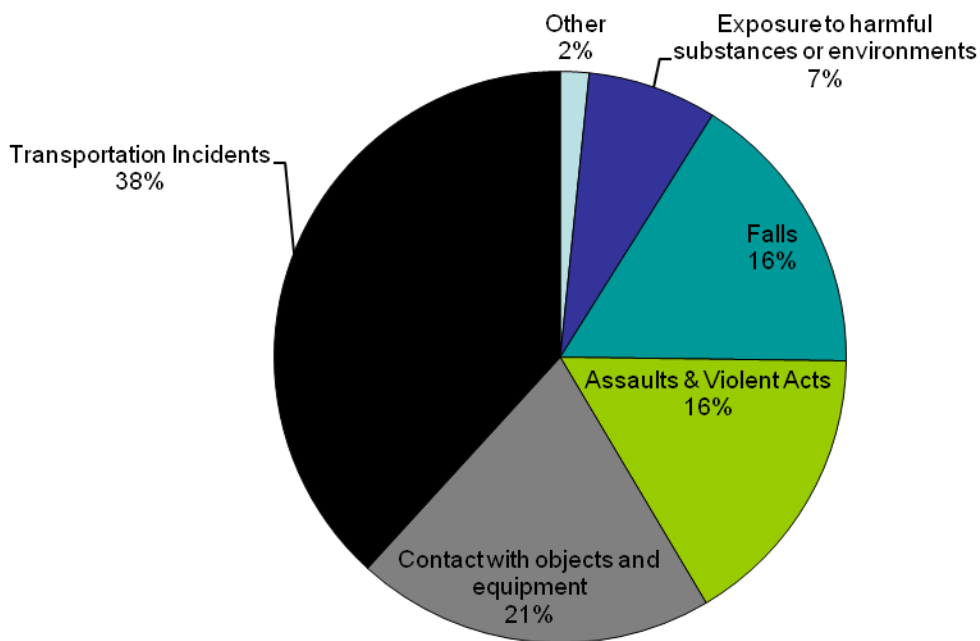
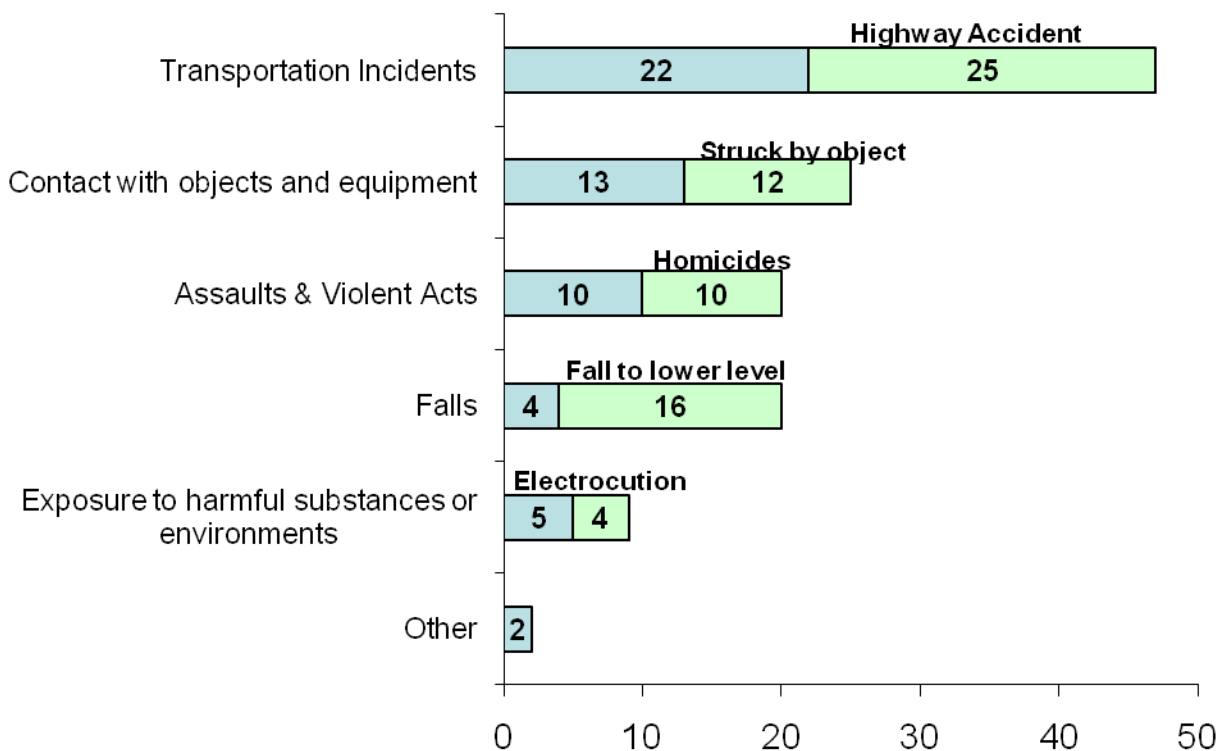
Professional & Business Services



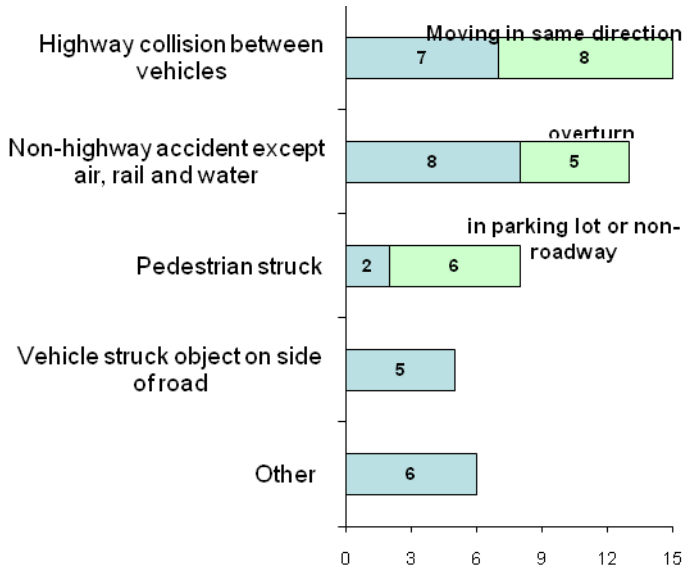
Leisure & Hospitality



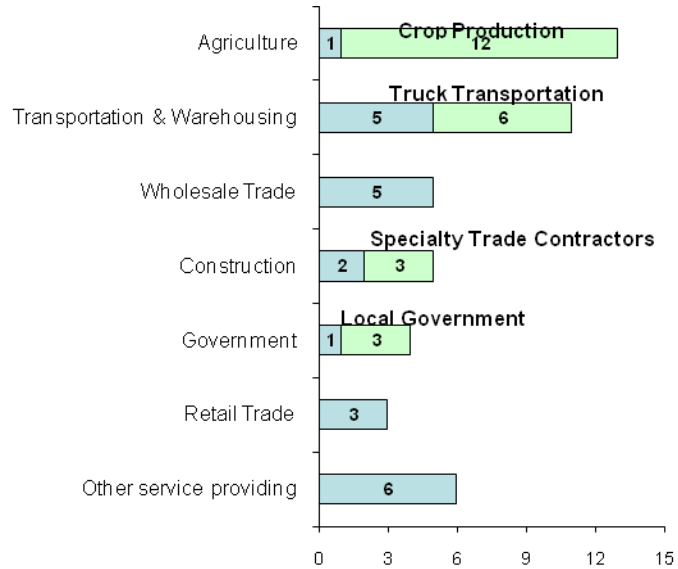
Events



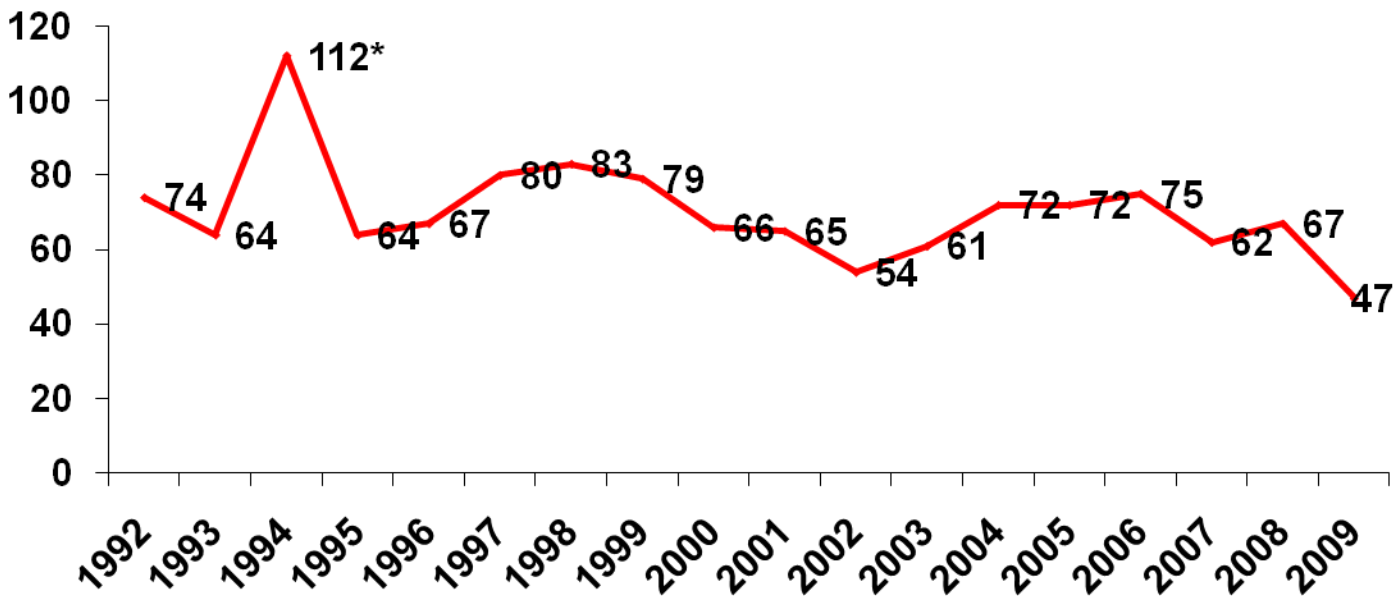
Transportation Events



Industries



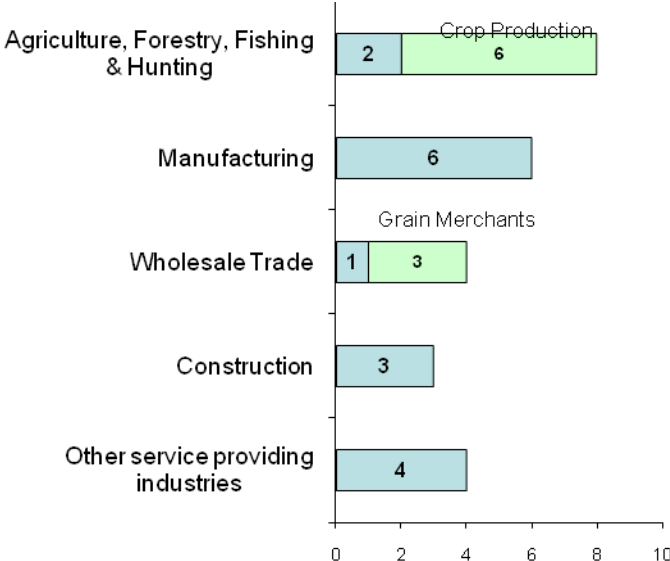
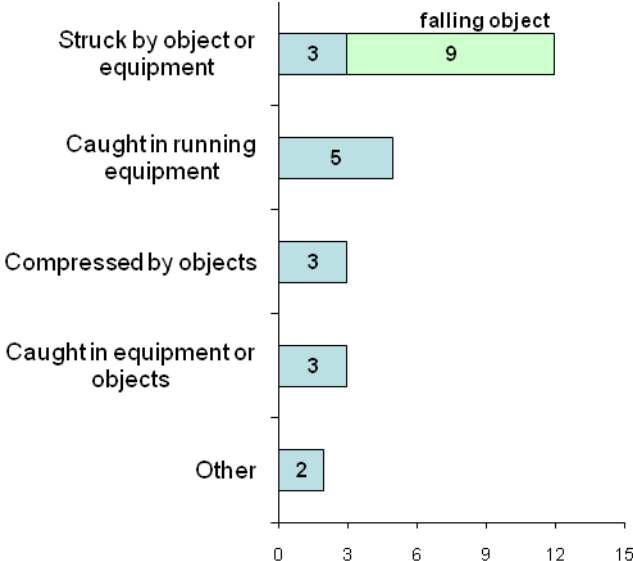
19-year Trend



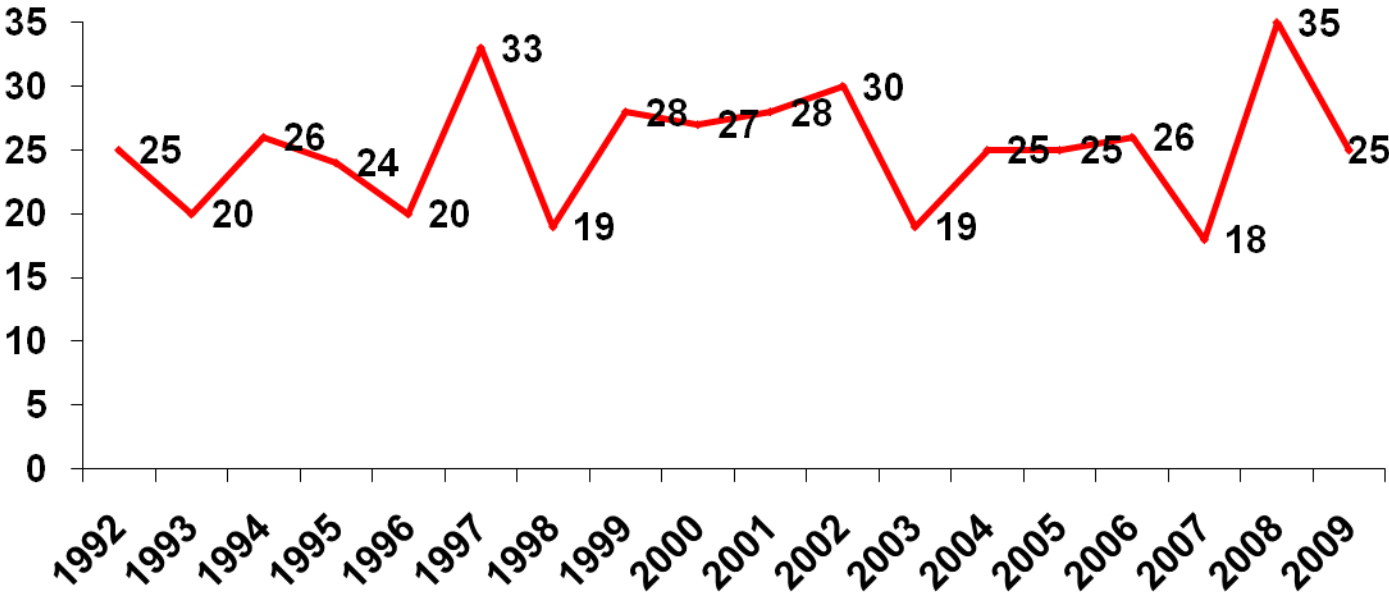
*American Eagle Commuter Flight 4184
Crash, October 31, 1994, Newton County

Contact with Objects

Industries

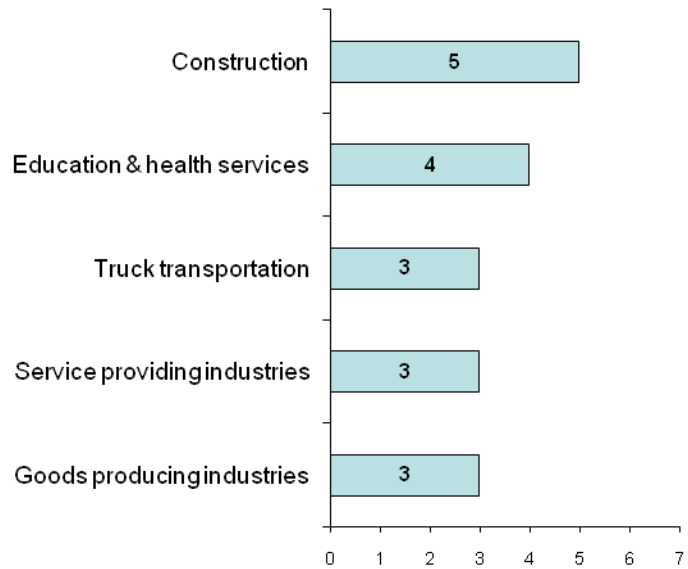
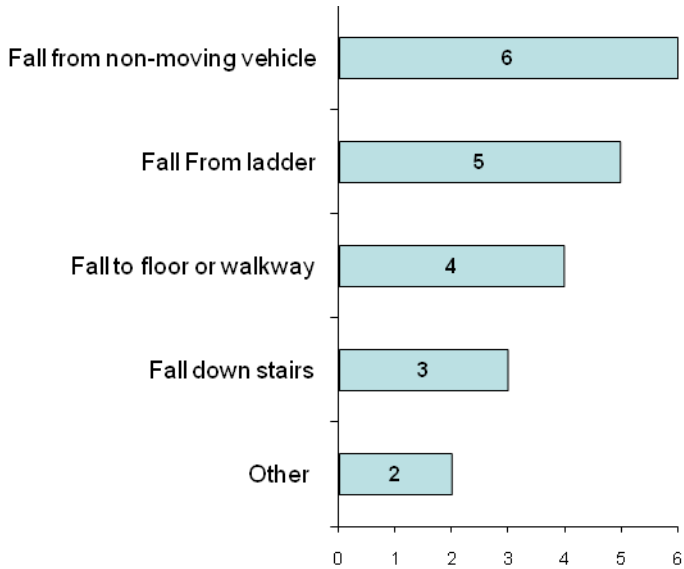


19-year Trend

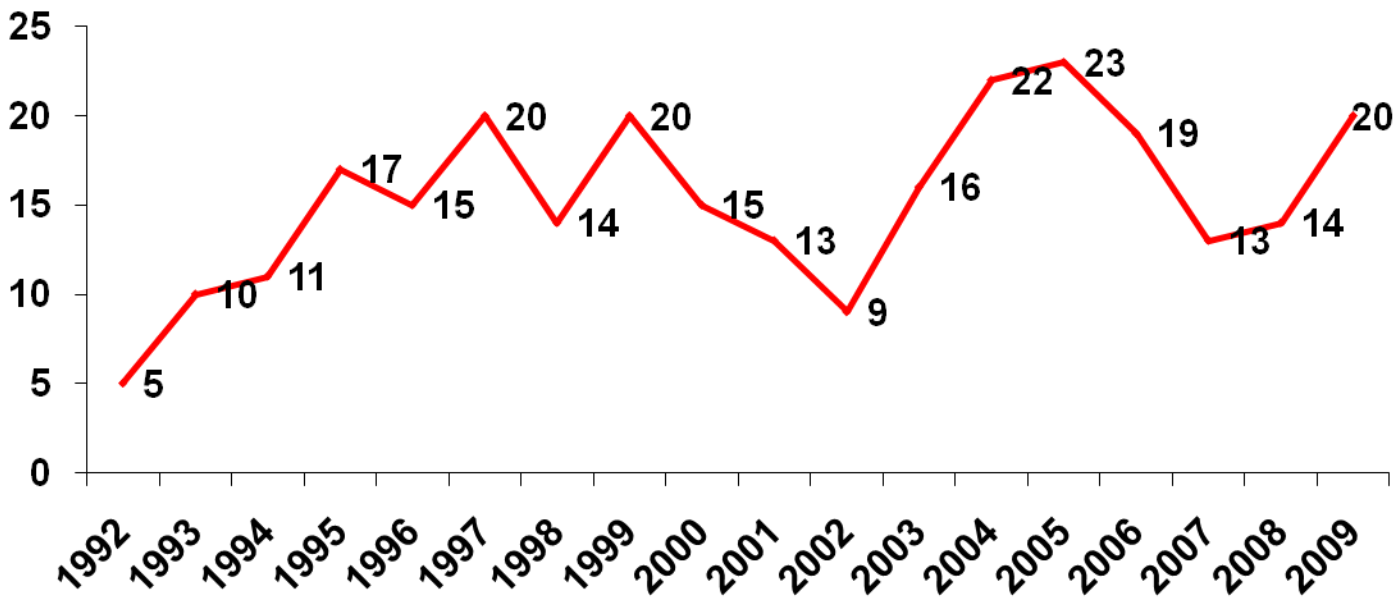


Falls

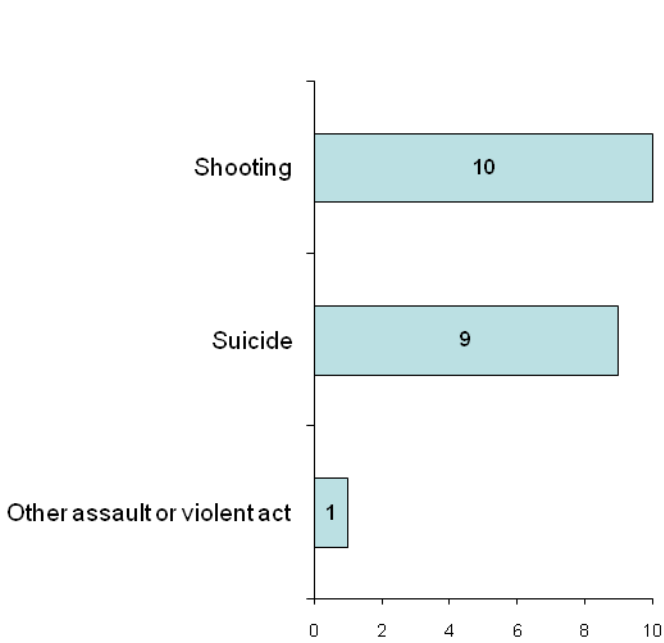
Industries



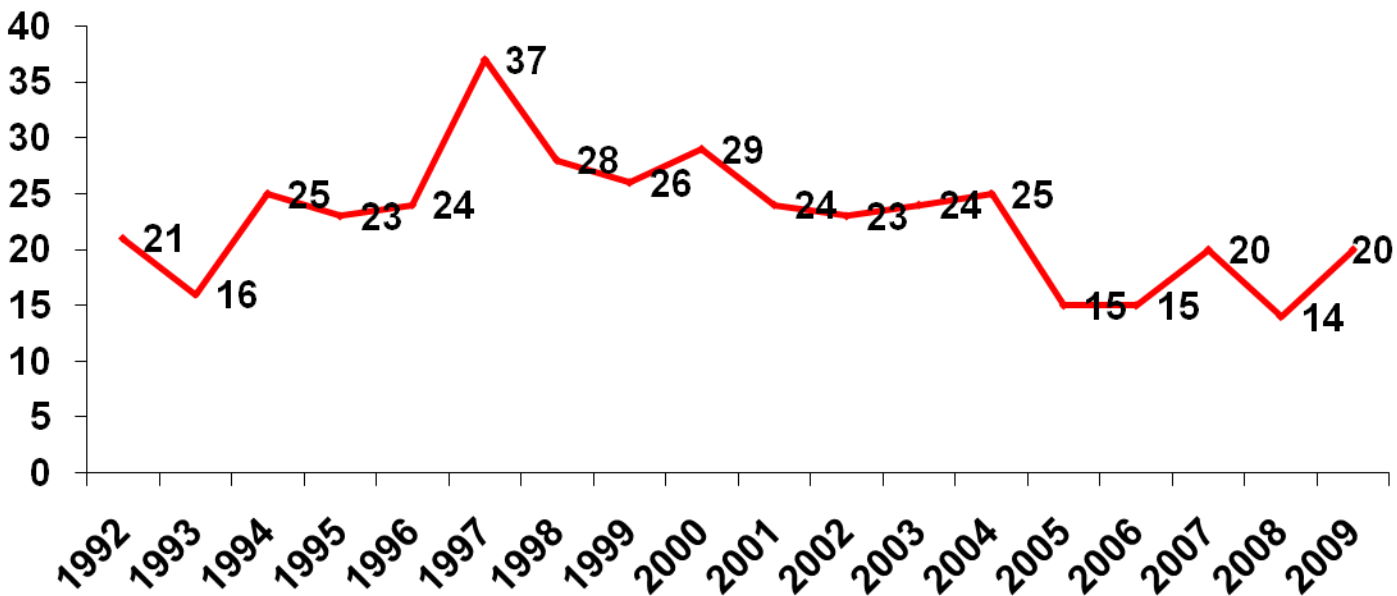
19-year Trend



Assaults & Violent Acts

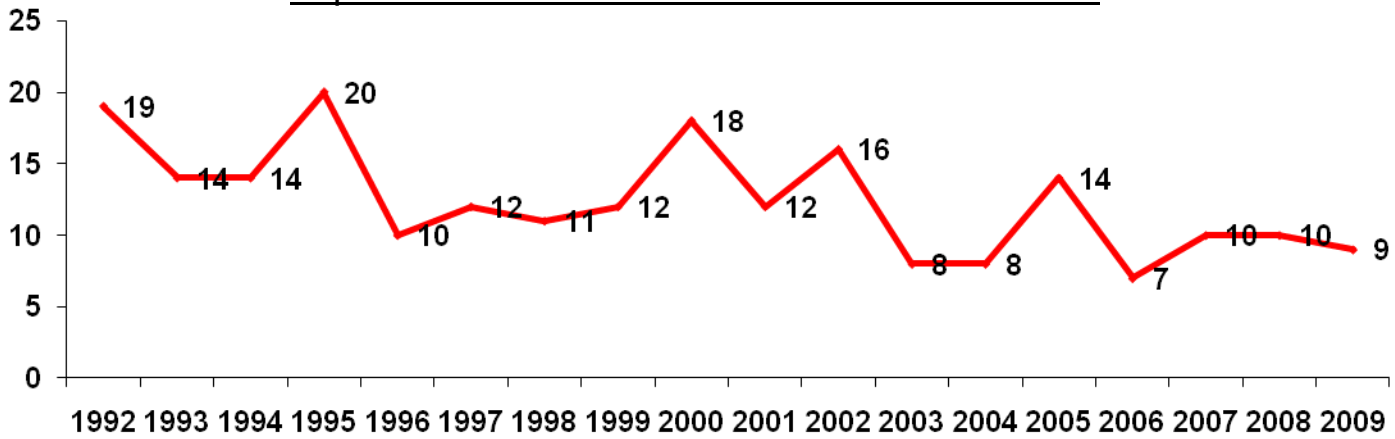


19-year Trend

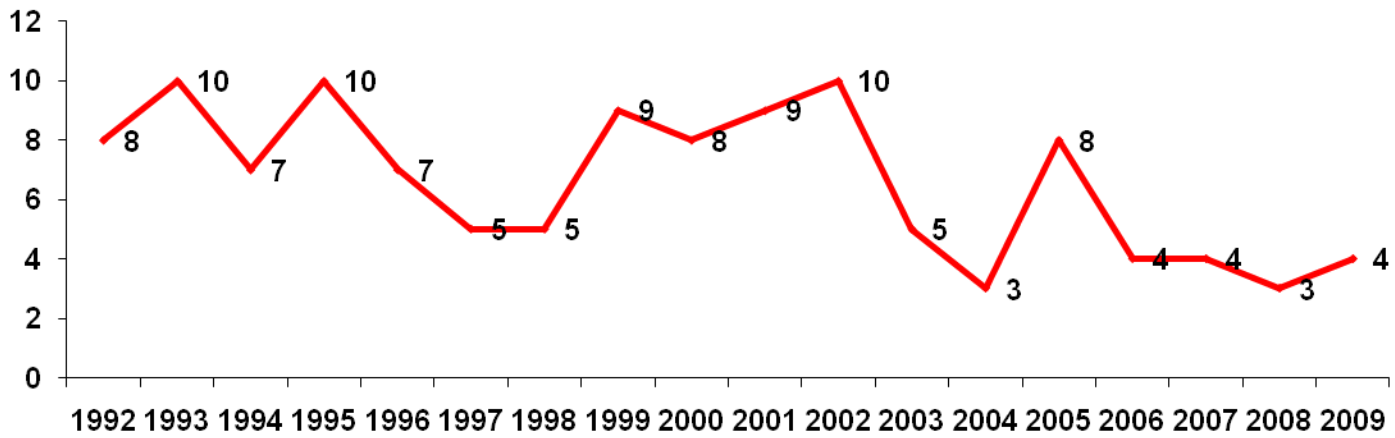


Other Event Trends

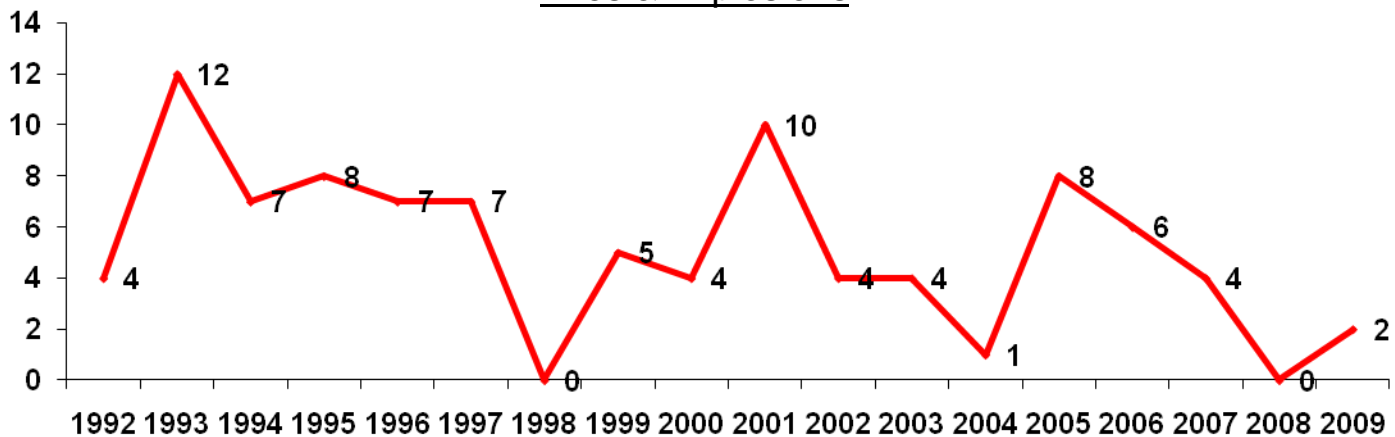
Exposure to harmful substances or environments



Electrocution (Subset of Exposure)

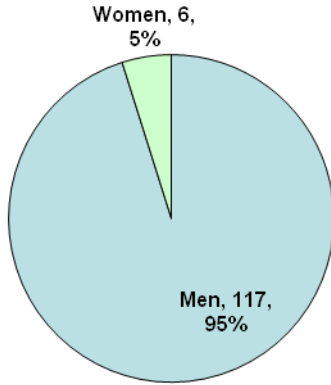


Fires & Explosions

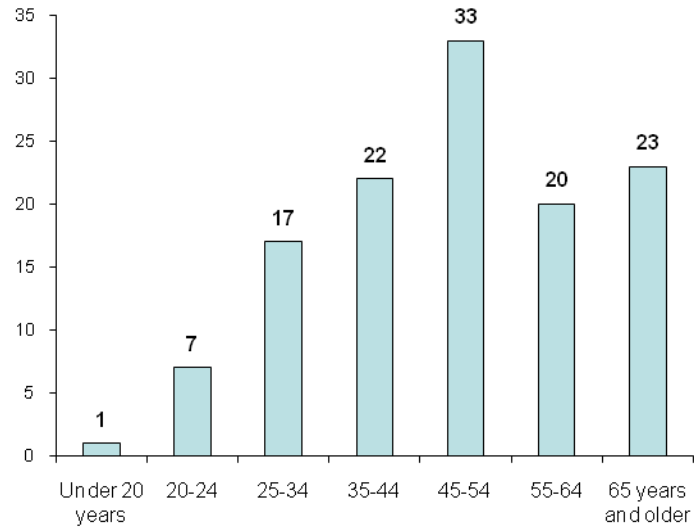


Worker Characteristics

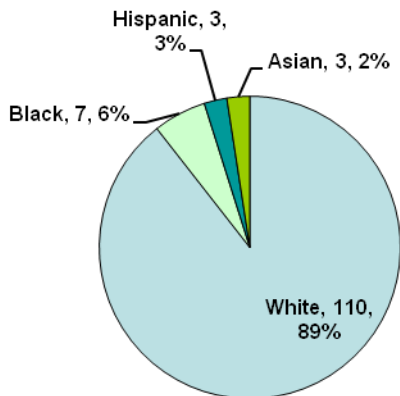
Gender



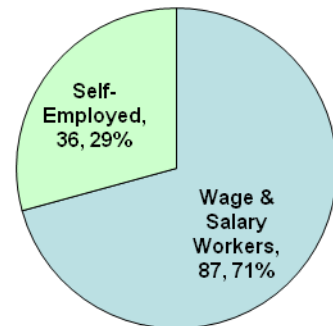
Age



Race

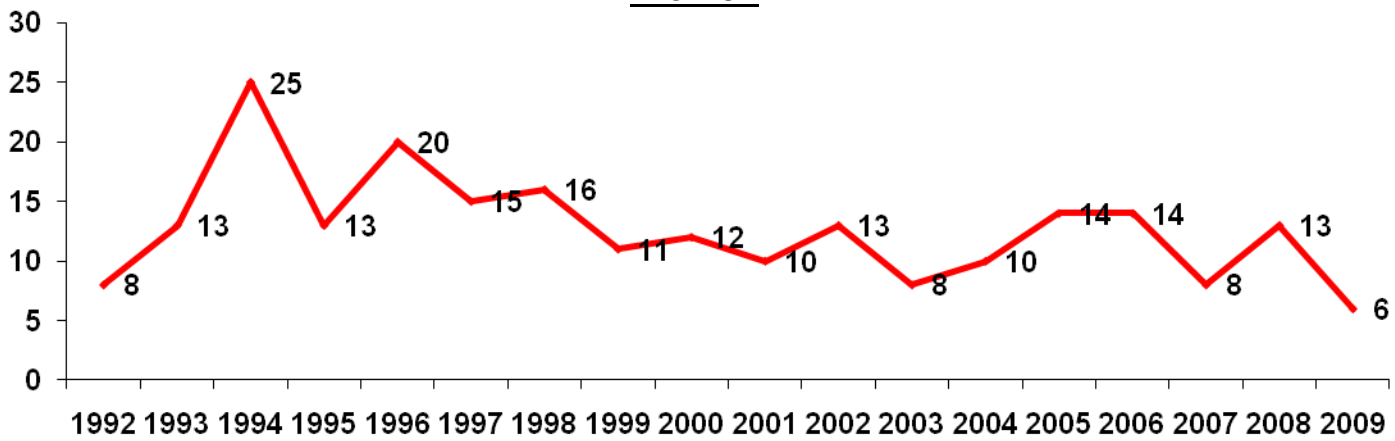


Employee Status

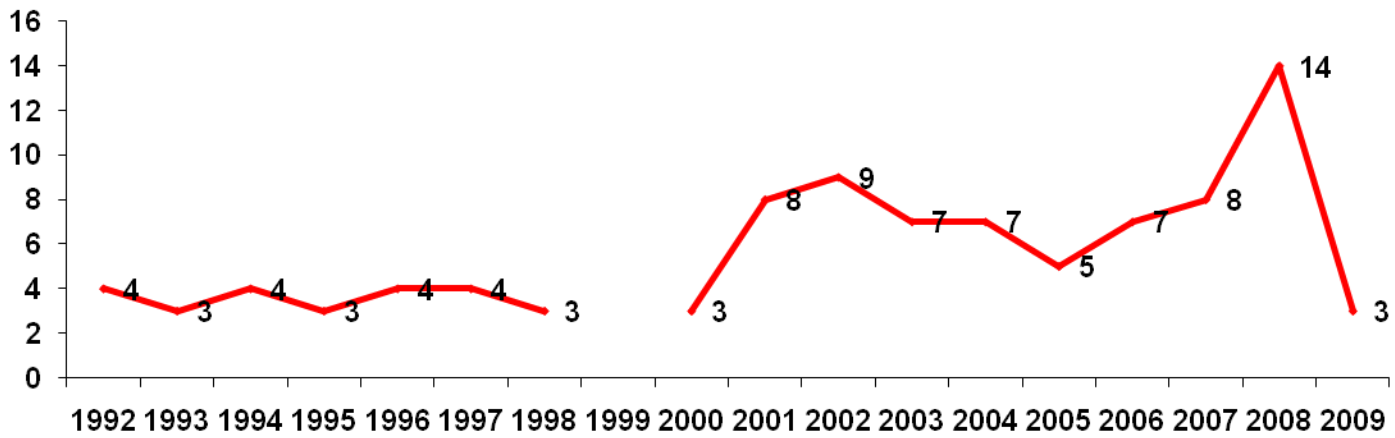


Worker Characteristic Trends

Women



Hispanic/Latino



Black, non-hispanic

