



Northwest Pump

PETROLEUM & INDUSTRIAL

An Employee-Owned Company

Industrial Division

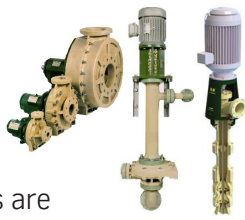


Industry Leader in the West Since 1959

PROCESS PUMPS

FRP NON-METALLIC CENTRIFUGAL PUMPS

FYBROC non-metallic process pumps provide superior corrosion resistance at competitive prices when compared to alloy metal designs. Horizontal pumps are available to 5500 GPM and heads up to 475 FT-TDH in close-coupled, frame mounted and magnetic drive configurations. Self-priming pumps offer up to 20 ft of static suction lift capability. FYBROC vertical pump designs are available to 4000 GPM and heads to 375 FT-TDH for open sump or tank mounting.



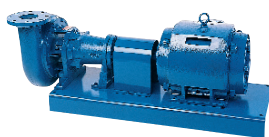
VERTICAL TURBINE, AXIAL AND PROPELLER PUMPS

AMERICAN MARSH, FAIRBANKS MORSE & LAYNE/ VERTI-LINE vertical pumps to 50,000 GPM and heads up to 3000 PSI. Low lift models are available to 1,000,000 GPM. Cast iron/bronze fitted construction is standard; any machinable and weldable alloys are available. Service includes complete Engineering, Fabrication, Machining, Testing and Quality Assurance. Typical applications: water, geothermal, chemical process, barge unloading, cooling towers, fueling services, mining, pulp and paper, and refinery / API pipeline transfer services.



GENERAL SERVICE PUMPS

FAIRBANKS MORSE and AURORA are the leading manufacturers of centrifugal Cast Iron / Bronze fitted and all Cast Iron general service pumps. Pump capacities range up to 15,000 GPM with design heads up to 1000' TDH, and temperatures up to 275F. Various configurations available including: End Suction, Horizontal & Vertical Split Case, Vertical In-Line, Regenerative Turbine, Vertical Sump, and Horizontal & Vertical Sewage. Ideal for applications such as: water supply, boiler feed and condensate return, wastewater sumps, sewage and irrigation with dynamically balanced impellers standard. All bronze or special alloy pump construction and mechanical seals optional. 5300 Series chopper pumps are designed to deliver 20-30% higher efficiencies over current pump designs and are tough as they come at handling solids.



SELF-PRIME NON-CLOG



EBARA EFQU and EFQT series solids handling with capacities to 3400 GPM, TDH to 210 feet, discharge sizes 2" to 12", standard and high head configurations for water, wastewater, sewage with solids handling to 3" spherical and light slurries. Back pull-out design, external shim-less adjustment for front wear plate, hard face mechanical seals, alternate construction materials available on request including 304ss, 316ss and CD4 MCU.

NON-METALLIC ANSI B73.1 SEAL-LESS MAGNETIC DRIVE CHEMICAL PUMPS



FINISH THOMPSON ANSI dimensional UC Series non-metallic, magnetically driven sealless pumps are capable of flow rates to over 1400 GPM, TDH up to 314 ft. Temperature range from -120 F to 250 F. The family of pumps range from the L series low flow to our H series high flow, ranging from 1.5x1x6 to 6x4x10. Impeller diameters range from 5"-10" and flanges meet either ANSI or ISO dimensional standards. All wetted parts are ETFE rotational molded fluoropolymers to handle a wide variety of corrosive fluids. Neodymium magnets allow superior no-slip performance. Optional non-sparking bronze "bump ring" is ATEX certified and meets the requirements of Group II, Category 2 equipment.

CORROSION RESISTANT PIPE



CHEM TITE ball, ball check and plug valves by Hills-McCanna serve demanding applications. Built with American quality and dependability for tough chemical applications. Sizes range from (depending on valve style) 1/2" to 12", full vacuum to 250 PSI, (-) 20 degrees F to (+) 400 degrees F. PFA and TFM lined, bubble tight design, epoxy coated ductile iron for maximum UV protection. Lockable handle and static ground spring (standard), ASME B16.10 with ISO 5211 mounting pad. ChemTite® butterfly valves have two seat options: PTFE or UHMWPE, sizes range from 2" to 12", pressure rating: full vacuum to 150 psi (10.34 bar). Five disc options: PFA / CD4MCu, 316 stainless steel, hastelloy® C276, titanium Gr. C-2. UHMWPE / CD4MCu.

Process

Municipal

Food Industry

Compressors

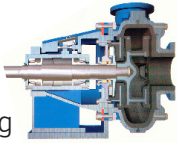
Service

Centrifugal • Self-Priming • Vertical Turbine • Magnetic Drive • Positive Displacement • Liquid Ring

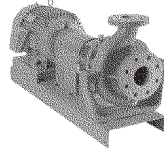
PROCESS PUMPS

RUBBER LINED SLURRY PUMPS SVEDALA ORION DENVER/SALA

METSO MINERALS Line of rubber-lined slurry pumps are heavy and robust centrifugal pumps, capable of handling tough and abrasive duties. We offer horizontal, vertical pumps for a wide range of slurry transport applications. Svedala's patented slurry cartridge seal design adds the benefits of easy adjustment, dual balancing and low heat generation for long seal life. Designed to give excellent performance, low energy consumption, long wear life and easy maintenance to give lowest total cost and trouble free operation. These pumps also go by past trade names of Orion, Thomas, Denver, Sala & Svedala.



HIGH TEMPERATURE PROCESS PUMPS



DEAN PUMP industrial inline, ANSI B73.1, self-priming and vertical process pumps are available in ductile iron or alloy metal to meet a wide range of applications needs.

The heavy duty R400 Series in cast steel or 316SS provides centerline supported casings with a multitude of options for high temperature or other demanding process conditions and many API features. The Series RA air-cooled thermal liquid pumps offer an economical solution to continuous pumping of up to 600° F liquids.

LIQUID RING VACUUM PUMPS

ROBUSCHI single stage liquid ring vacuum pumps are built for heavy duty industrial service with a wide range from 28 to 2,470 CFM single stage vari-flow port water and or oil service liquid vacuum (27.5" Hg) – pressure (29 psig) in eleven sizes to choose from. Available in cast iron, 316 stainless steel impeller & 100% 316 stainless. Models from RVS 3 – 21 available in Mono block integrated IE3 motor or Lantern Bearing block motor adaptor.



AIR OPERATED DOUBLE DIAPHRAGM PUMPS



WARREN RUPP Sandpiper™ diaphragm pumps offer seal-less pumping in a selection of materials including aluminum, cast iron, 316SS, hastelloy, polypropylene and PVDF (Kynar). Sizes from 1/4" to 4". Spill containment pumps are available for hazardous applications. Sanitary models meeting USDA and 3A standards for foods and pharmaceuticals can also be fitted with leak detection accessories. Award winning AirVantage™ pumps reduce air consumption by up to 50% by adapting to process conditions, saving energy while maintaining flow. Increasing productivity while reducing maintenance.

ANSI PROCESS PUMP REPLACEMENTS

BLACKMER System-One back pull out wet end / bearing frame retrofit kits have extra large shaft diameters and use any brand single or double mechanical cartridge seal arrangements to meet or exceed EPA and OSHA requirements. No shaft sleeve required. Available in horizontal, vertical in-line, and vortex. Lowest shaft stiffness ratio (L^3 / D^4) pumps in the process industry. Retrofit kits can use C-face motors to eliminate alignment concerns. A variety of metal alloys are available to meet process conditions. Standard oil mist lubrication.



ROTARY VANE POSITIVE DISPLACEMENT PUMPS



BLACKMER pumps utilize self-adjusting sliding vane technology to maintain maximum efficiency and high vacuum performance. Easily replaceable vanes and case liners simplify maintenance and lower operating costs. Available in close-coupled, gear-reduced base mounted and seal-less magnetic drive arrangements. Standard materials are Cast Iron, Ductile Iron and 316 Stainless Steel. Sizes include 3/4" through 10".

ANSI B73.1 / CENTRIFUGAL / SELF-PRIMER & TURBINE PUMPS

GRISWOLD Model 811 Standard ANSI B73.1 pumps feature end-to-end 100% interchangeability of parts with other ANSI brands. Available in Ductile Iron, 316SS and other alloys, Frame-Mounted and Close-Coupled configurations. The Model E, F, & G are Heavy Duty Standard CI/BF Industrial Pumps for all services.



Process

Municipal

Food Industry

Compressors

Aftermarket

Slurry • Internal Gear • Submersible • Double Diaphragm • Rotary Vane • ANSI Process • FRP

MUNICIPAL PRODUCTS

HEAVY DUTY RECESSED IMPELLER PUMPS

ESSCO TUFSUB™ 100% recessed impeller severe duty vortex pumps designed with extra heavy wall cross sections and extra thickness in the internal wear areas. Pumps capable of handling long stringy material, large size solids, especially suited for handling slurries. Wear plate located behind the impeller, split volute design, casing thickness up to 1" in thinnest wear area.

Offered in ten different metallurgies, sizes include 3x8, 3x12, 4x12, 4x16, 6x12, 8x6x17. Reliance brand motors offering both standard duty and U.L.listed explosion proof motors for Class 1, Division 1, group D hazardous locations. Both motor types include moisture detection and thermal protection as standard features, heavy duty bearings and dual mechanical seals. High temperature and energy efficient designs are available.



PACKAGED BOOSTER SYSTEMS

AURORA INTELLIBOOST variable speed, constant pressure booster systems offering Pentair VFD for each pump, a programmable logic controller (PLC) with a Proportional Integral Derivative Loop (PID) to stage up to 2-4 pumps, either multistage or end suction, based on pressure and flow needs. Each system is factory assembled, wired and tested. Ethernet capable allowing the ability to connect with a Smart Phone network for system status and alarms through WI-FI.



Seemingly endless programmable system features also including large touch screen, NEMA 1 enclosures, Pentair pumps, 304SS SCH 40 groove or ANSI flange manifolds, liquid gauges, steel base/manifold support, isolation and check valves. Many optional features are also available.

LIQUID RING VACUUM PUMPS

ROBUSCHI single stage liquid ring vacuum pumps are built for heavy duty industrial service with a wide range from 28 to 2,470 CFM single stage vari-flow port water and or oil service liquid vacuum (27.5" Hg) – pressure (29 psig) in eleven sizes to choose from.

Available in cast iron, 316 stainless steel impeller & 100% 316 stainless. Models from RVS 3 – 21 available in Mono block integrated IE3 motor or Lantern Bearing block motor adaptor.



SUBMERSIBLE NON-CLOG AND GRINDER PUMPS

EBARA air cooled design Grinder Pumps 2HP through 15 HP pumps with lifts to 260 feet and flows to 190 GPM and are offered as complete turnkey systems or engineered to specification. Non-Clog Pumps 3" discharge through 12" discharge with 2" to 5.25" solids handling, 1 HP to 125 HP, Lifts to 280 feet and flows to 8000 GPM. Explosion-proof construction in both Grinder and non-clog designs on request.

Accessories custom designed controls and alarm panels, liquid level controls, 3" through 12" guide rail lift-out packages. Junction boxes, both standard and explosion-proof.



POSITIVE DISPLACEMENT BLOWER PACKAGES

GARDNER DENVER Offering 150 years of manufacturing experience for the "IQ" (Intensely Quiet design as low as 60 dBA) packaged system and well-known individual blower blocks you've come to know like CycloBlower®, HeliFlow®, TriFlow®, DuroFlow®, RBS®, and the Sutorbilt Legend® Industrial Blowers. Airflow up to 16,800 cfm, pressures up to 20 psi and 17' Hg for vacuum. Tri Lobe models offer quiet, efficient shock-free operation with proven results. Heavy duty roller bearings take up to 100% radial forces while typically giving up to 100,000 hour bearing life.



Process

Municipal

Food Industry

Compressors

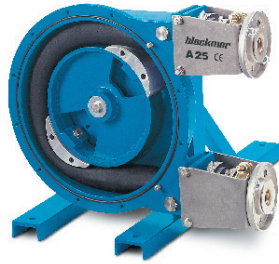
Service

ANSI Process • Submersible Non-Clog • Progressive Cavity • Positive Displacement Blowers

MUNICIPAL PRODUCTS

PERISTALTIC HOSE PUMPS

BLACKMER Abaque peristaltic line available in 10 sizes that provide flow rates of .07 to 290 GPM (15 to 66,000 L/h). Will handle abrasive fluids with little wear. Hoses are constructed of natural rubber, Buna or EPDM within the pump's casing, provide high levels of volumetric accuracy for sampling, transfer, and metering applications.



Ability to pass solids in the material being pumped. Dry-run capability allows tank and line stripping. Seal-less design eliminates leaks, contamination and wear problems associated with difficult to seal products. Self-priming up to 29.5 feet (9 meters). Reversible operation allows pumping in both directions. Durable construction of ductile iron and steel construction allow higher discharge pressures up to 217 psi (15 bar). Low maintenance requirements of the hose and shoes.

HEAVY DUTY VERTICAL TURBINE PUMPS

AMERICAN MARSH, LAYNE/VERTI-LINE and NATIONAL PUMP manufacture multi-stage vertical and submersible turbine pumps to meet any application or configuration and can provide all metallurgies. Full factory testing services are available as well as an in-house coating facility to meet the highest standards.

These vertical turbine pumps are designed primarily for heavy duty, continuous operation, in municipal and industrial applications.



PROGRESSIVE CAVITY PUMPS

CONTINENTAL progressive cavity pumps have a full line of P.C. pumps and aftermarket parts to choose from that interchange with most of the current-day products such as Moyno, Monoflo, Seepex, Tarby, Roper, etc.



MUNICIPAL NON-CLOG & WASTEWATER PUMPS

AURORA is the leading manufacturer of centrifugal Cast Iron / Bronze fitted and all Cast Iron general service pumps. Pump capacities range up to 15,000 GPM with design heads up to 1000' TDH, and temperatures up to 275-degree F. Various configurations available including: End Suction, Horizontal & Vertical Split Case, Vertical In-Line, Regenerative Turbine, Vertical Sump, and Horizontal & Vertical Sewage.

Aurora pumps are ideal for applications such as: water supply, boiler feed and condensate return, wastewater sumps, sewage and irrigation with dynamically balanced impellers standard. Optional all bronze or special alloy pump construction and mechanical seals available.



NON METALLIC VERTICAL TURBINE PUMPS

FYBROC FRP Vertical Turbine with capacities to 1700 GPM (386 m3/hr), heads to 70 feet (21 m), working temperatures to 250°F (121°C) for VR-1, 275°F (135°C) for EY-2, working pressures to 150 PSI (1,035 kPa), fiberglass reinforced plastic (FRP) construction, multi-stage options available.

High strength casings with 150 lb FF flanges, SS shaft material standard (other alloy options), NEMA/IEC, TEFC vertical high thrust motors, powder coated pedestal, mechanical seals std. Application examples: seawater intake, brackish water reverse osmosis, brine, recirculation and transfer.



Process

Municipal

Food Industry

Compressors

Aftermarket

SCREW PUMPS

LIBERTY PROCESS Freedom Series Progressive Cavity Sanitary Pumps made with highly polished 316 Stainless Steel wetted parts. Elastomers offered in sanitary food grade Buna, EPDM and Fluoroelastomer. Stock pumps have food grade packing seal type but can be retrofitted with a mechanical seal (single or double). Single-stage and two-stage pumps equipped with Tri-Clamp Connections and (CIP) Clean-In-Place connections can also be provided. Flow-rate: 10-125 GPM. Pressures: 0-150 PSI. Seal options, base options, stainless steel, rotors 316 chrome plated stainless steel, stators food grade Buna Nitrile/Viton®/EPDM.



FLEXIBLE IMPELLER PUMPS

JABSCO "Flexible Impeller Pump" line offers 3-A certified elastomers with polished 316 SS surfaces to provide smooth, steady, pulsation-free flow in sizes from 1" to 2.5" and flows 132 GPM. These rugged little pumps come close- or long-coupled for Clean-In-Place (CIP) or easy strip clean applications. Self priming from run dry up to 7.8', handles soft solids - max. 16mm diameter, certified to US 3A Standard 02-09, minimal shear to thixotropic fluids, easy to service and maintain. Mechanical shaft seal and multiple port clamp options. 3-A Food Grade Neoprene or EPDM flexible impeller that can handle light to heavy viscosity liquids.



ECCENTRIC DISC PUMPS

BLACKMER S-Series pumps are similar to the C-series but in a more compact version with a natural rubber bellows for sealing the liquid from the bearing housing. Maximum pressure for the C & S series is 130 PSI, 212 degrees F and 150 GPM.



ROTARY LOBE PUMPS

JABSCO 3-A sanitary lobe designs fully self-draining pump head does not hold-up process liquid or cleaning agents. Rapid decontamination and product change-over. External rotor, no internal crevices and low-carbon 316L stainless-steel for maximum corrosion resistance.

Standard surface finish: 0.8µm (150 grit), with 0.5µm (240 grit) and electro polish options. High efficiency to minimize damage to shear-sensitive low viscosity fluids. Max conditions of 554 GPM, 290 PSI, 284 F, 1 Million cPs, port to 6". Excellent clean in-place (CIP) and steam-sterilizing (SIP) design.

AIR-OPERATED DOUBLE DIAPHRAGM PUMPS

WARREN RUPP and GRACO

USDA accepted & 3-A standard AOD pumps for foods and pharmaceuticals. These pumps come in 1, 2, & 3" sizes (1.5" & 2.5" sanitary connections) for 0-150 GPM in ball valve and flap valve design. Electropolished 316 stainless fitted with white food grade Nitrile elastomers. Top and bottom discharge design. Accessories include a stroke counter for batching and surge dampeners.



ECCENTRIC DISC PUMPS

BLACKMER C-Series 3-A eccentric disc pump is literally a one of a kind pump technology that comes in 3-A stainless steel, brushed stainless steel and ductile iron with built-in relief valve. This design has no temperamental mechanical seal but is not a mag drive. A stainless steel metal bellows provides a quick and easy CIP clean out of this pump.



FOOD INDUSTRY

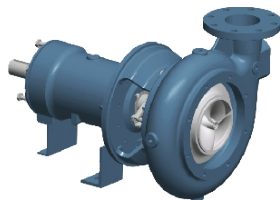
FOOD GRADE PUMPS

FINISH THOMPSON FDA material compliant AP Series closed system solution with electro-polish finish in four sizes ranging in flows up to 145 GPM, discharge heads to 89 ft., viscosities to 300 cps, specific gravities to 1.8 and temperature to 300 degree F. Pump comes NPT & BSP thread connections standard, weld or tri-clamp connections available as options. NEMA or IEC motor frames, ATEX certified.



CHOPPER PUMPS

FAIRBANKS MORSE chopper pumps for excellent solids conditioning, enclosed impeller with a rugged cutting profile, delivers pump efficiencies 20-30% beyond the current chopper pump designs. Rugged shaft bearings and contoured cleanouts standard, plus volute for immediate access. Cutter bar, impeller and rear back plate of hardened steel. Available in horizontal and vertical configurations. 4", 6" & 8" sizes with flows from 200 - 5500 GPM, heads from 20' - 100' TD.



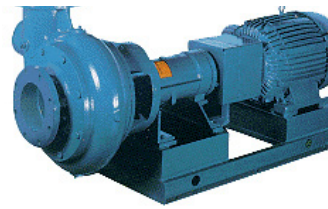
FOOD HANDLING

FAIRBANKS MORSE Nijuis heavy duty Hydro-Screw solids handling pumps are great for pumping delicate solids such as grapes, cranberries, potatoes, live fish, etc. Excellent efficiency, low NPSHR, gentle pumping action, outstanding abrasion resistance, moves heavy sludges. Flows to 8500 GPM, heads to 70 ft TDH. Large hand clean-out feature.



PLATE AND FRAME HEAT EXCHANGERS

PLATE CONCEPTS Modu-Flex™ plates with port diameter sizes from 1" to 20" (5 - 15,000 GPM) with plate materials of construction in 304 / 316 SS, Titanium, 254 SMO, or Hastelloy™, up to 15,000 sq feet in a single frame design pressures from 150 to 400 PSIG. Designed to ASME Code Section VIII, Div.1, ASME Stamped & National Board registered, ARI Certified to Standard 400, Gaskets in Nitrile (NBR), EPDM or Viton, Free-Flow (Wide-Gap), Welded Cassette, Double Wall plate designs, Copper or Nickel brazed stainless steel units also available. Key advantages: Low fouling, high efficiency, small foot print, ease of maintenance, expandable design.



SOLIDS HANDLING

FAIRBANKS MORSE

horizontal solids-handling pumps in discharge sizes from 2" to 42". Bladeless impellers are available in many units with 2" through 10" discharge sizes and are capable of passing 10-25 percent more solids, than a conventional two-vane impeller.

Impellers designed with large passageways, vanes with blunt well-rounded leading edges. This design channels the flow away from the impeller vanes to assure passage of large solids and long stringy materials, reduce turbulence and radial and bending shaft forces.

Abrasive wear is minimized, bearing, mechanical seal (when used) and shaft life is lengthened, maintenance and downtime costs are greatly reduced. Material of construction include cast iron volutes, cast iron impellers and carbon steel pump shaft. Capacities: 15 - 75,000 GPM, Heads: 5 - 300 feet.



MAGNETIC FLOW METERS

LIQUID CONTROLS (LC) sanitary style, teflon-lined stainless steel mag meters offered with pulse output or electronic registration. LC also offers stainless steel coriolis mass flow and turbine meter designs for batch metering. Sizes include 1" - 4" with flows from 8 - 1200 GPM.

Process

Municipal

Food Industry

Compressors

Aftermarket

COMPRESSED AIR

ROTARY SCREW COMPRESSORS

SULLAIR has been offering energy efficient, single and two-stage, rotary screw air compressors ranging from 5HP-600HP since 1965. In addition to their durability, Sullair has stayed on the cutting edge of energy efficiency with their S-energy line of compressors offering variable speed drives, spiral valve capacity controls, and premium efficient motors. In addition, Sullair also manufactures high performance, rotary screw vacuum pumps from 5-200HP.



Sullair also offers a two stage design 100-200HP Oil Free compressors ranging from 428-801 icfm with pressure of 100-150 psi with the choice of air or water-cooled. Rest easy with eConnect™ modern system monitoring allowing you to manage the health of your entire system of up to 16 compressors at once.

RECIPROCATING AIR-COOLED COMPRESSORS

CHICAGO PNEUMATIC RCP Series are typically factory shipped same day if in stock or 3-5 days if built to order, ready to install. Two stage models come with a 2 year “bumper to bumper” parts and labor warranty, Single stage models come standard with a 1 year “bumper to bumper” warranty. 2-3.5 hp, single stage max up to 130 psig, 7.1 – 12.4 acfm at 100 psig; 5-15 hp, two stage maximum 175 psig, 18.5-50.5 acfm at 100 psig, splash lubricated, tank mounted vertical or horizontal configuration, simplex and duplex models.

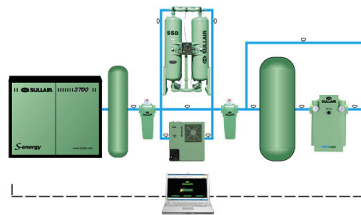


Standard features include: Start/stop pressure switch control, ASME tank and safety valves, fully enclosed belt guard, magnetic starter (applicable units only), manual tank drain, and discharge valve.

Premium models include all standard features plus: Low oil level switch, auto tank drain, and triple-pass pump mounted after-cooler (5 and 7.5 hp models only). All units ship factory lubricant.

AIR TREATMENT

SULLAIR products offer the latest technologies in refrigerated and regenerative air dryers. Standard sizes range from 15-10,500 CFM. Sullair's cycling refrigerated dryers feature energy efficient scroll technologies and low pressure drop heat exchangers.



Sullair's complete line up of regenerative air dryers offers both price competitive heatless options, and lowest long term cost solutions such as externally heated, and blower purge technologies. With Sullair's Oil-Free Guaranteed air treatment packages, Sullair customer's can enjoy the low maintenance and energy efficiency of an oil flooded compressor combined with air quality that surpasses the typical “oil free” compressor solution.

LARGE CENTRIFUGAL COMPRESSORS



SULLAIR offers energy efficiency advanced technology. Titanium impellers specifically designed to match the required airflow and pressure, contributing to energy savings. Low maintenance costs designed with many non-wearing internal components requiring minimal periodic maintenance. All moving parts are easily inspected by simply removing the horizontally-split gear cover. Titanium impellers provide strength while resisting corrosion and wear.

Sullair centrifugal compressors are the only offering in the industry to utilize this type of impeller material on standard compressor designs. Class 0 Oil-Free Air for applications where air purity is essential, including pharmaceuticals, food and beverages, electronics, automotive painting and textiles.

Under the ISO 8573-1 Class Zero certification, Sullair compressors are designed to operate oil free, minimizing the risk of contaminating the process air or gas. T Series – flows to 11,700 cfm and the F Series – flows to 118,000 cfm. Centrifugal compressor technology will be a more efficient way to make high volume air at 350 HP and greater rotary screw.

Process

Municipal

Food Industry

Compressors

Service

Rotary Screw • Reciprocating Air - Cooled • Large Centrifugal • Air Treatment

COMPRESSED AIR

COMPRESSED AIR PIPE SYSTEMS

LEGRIS Transair quick connect piping system for all types of industries. We provide a wide range of quick connect piping solutions for liquid, inert gases vacuum and compressed air.



Thanks to a large choice of sizes from 1/2" to 4" including an extensive range of accessories. You can't beat the simple installation, energy savings, and layout flexibility of Transair compressed air piping solutions.

NITROGEN GENERATORS

NITROSource nitrogen gas generators' unique design and advanced energy saving technology means less compressed air is needed to generate more nitrogen than any other gas generator currently available.



Supported by substantially lower servicing costs, reduced downtime and a longer working life than comparable nitrogen generators, NITROSource nitrogen gas generators offers the most cost-efficient nitrogen supply available; significantly more affordable and safer than traditional delivery methods of supply, such as gas cylinders and mini bulk storage. NITROSource provides nitrogen gas of 95% to 99,9995% equivalent nitrogen purity.

CONDENSATE AND OIL/WATER SEPARATION



BEKO USA Drypoint® compressed air refrigerated dryers are engineered around the unique "VarioFlow" technology using a hot gas by-pass valve with a gas charged capsule operating independently of power or electronic support, providing a 100% stable dew point, zero maintenance and zero freeze-up for outstanding energy efficiency ranging from 10 to 5000 SCFM.

Also offered in high PSI and high temp models. BEKOMAT® condensate and oil/water drains designed for electronically level-controlled condensate discharge in air systems from 100SCFM to 50K SCFM and working pressures to 915 PSIG for piston and rotary screw air systems.

OIL FREE AIR SYSTEMS



HITACHI certified ultimate air quality, ISO 8573.1: 2001 – Class 0 (class 1 being $\leq 0.01 \text{ mg/m}^3$) oil free DSP Series rotary screw air systems from 2HP – 300HP, CFM flow ranges from 5.7 – 1413, single and two stage design, air or water cooled, fixed or VSD drive.

Patented HX-18 PTFE-free coatings ensure purity of air -end, stainless steel rotors eliminate corrosion and promote the adhesion of the coatings. Patented Rotor Profile Design optimizes the clearances for increased performance. Tapered rotors compensate for the thermal expansion in the air end.

SRL OIL-LESS SCROLL AIR COMPRESSORS

HITACHI 100% oil-less design eliminates environmental emissions and concerns for natural resources. Proprietary Tip Seal and Unique Scroll Wrap increase performance and extend service intervals. Alumite™ treatment extends scroll life and limits life cycle cost. Tip Seal material provides high performance with high reliability and extremely low wear. Industry leading sound levels at 48-52 dBA.



Point of use is now a possibility with the quiet Hitachi SRL Oil-Less Scroll Compressor. Longest service life of any scroll compressor on the market, microprocessor controlled, primary and secondary cooling stabilize discharge temperature. Air cooled fixed speed design operates at 120 – 145 PSIG, 230/460V, with a range of 5.7 – 21.2 SCFM.

Process

Municipal

Food Industry

Compressors

Aftermarket

SERVICE

Meter Rebuilding, Repair and Calibration Service

Liquid Flow Meters

- One year guarantee, **same as new!**
- 500 gallon mobile prover
- Over 30 years of meter experience
- Specializing in A.O. Smith, Brodie, Daniel, Liquid Controls, Neptune, Tokheim, Veeder-Root, **and more.**



General Service

Offering:

- 24-hour emergency service
- 24/7/365 company-owned call center
- In-shop or in-field capability
- Pump and motor surge testing
- Technical help desk
- Preventative maintenance agreements
- Training
- Start-up services
- Confined entry certified
- Boom trucks
- 15 service trucks in the NW
- Milling machines
- TIG/plasma
- Impeller trimming & balancing
- "TWIC" access approved personnel
- 10' metal lathes, 3.25" diameter stock



Custom Machining



Laser Alignment



24 Hour Call Center



In-Field Service



Emergency Repairs

All brands of:

- Compressors
- Positive displacement blowers
- Fluid & propane meters

Pumps of all brands & types



Compressors/Blowers



Fabrication



Installation/Removal

Process

Municipal

Food Industry

Compressors

Service

24-Hour Call Center • Factory-Trained Technicians • Installation • Calibration

AFTERMARKET PARTS

PUMPER PARTS

For ARO, Wilden, Yamada.



SULLAIR GENUINE PARTS

For Sullair industrial air compressor parts.



NOMAD™ PARTS

For ARO, Wilden, Warren Rupp.



SPECTROM AFTERMARKET PARTS

For Warren Rupp, ARO, Yamada, Graco, Viking.



GRISWOLD™ REPLACEMENT PARTS

For Gould's ANSI pump parts and power frames.



CONTINENTAL PUMP

For progressive cavity replacement parts.



ALLWEILER

For progressive cavity and centrifugal pump replacement parts.



NORTHWEST PUMP SEAL REPAIR & REBUILD

Northwest Pump rebuilds all brands of mechanical seals.



Process

Municipal

Food Industry

Compressors

**Aftermarket
Parts**

Parts for: Wilden, Moyno, Yamada, ARO, Goulds, Viking, Allweiler • Mechanical Seal Repair

PROCESS PUMPS

AMERICAN MARSH • Self-Priming Pumps
APLEX • Reciprocating Piston
AQUFLOW • Metering Pumps
AURORA • Process Pumps
BLACKMER • Internal Gear
BLACKMER • Positive Disp. & Mag Drive
BLACKMER • Hose Pump
BLACKMER • System One ANSI Process
CONTINENTAL • Progressive Cavity
DEAN • High-Temp Process Pumps
ENVIROGEAR • Sealless Gear Pump
FAIRBANKS MORSE • Centrifugal
FYBROC • FRP Centrifugal Pumps
GORMAN RUPP • Centrifugal & Gear
GRISWOLD • ANSI Process Pumps
JABSCO • Sanitary Lobe & Impeller
METSO • Rubber Lined &
Hard-Chromed Slurry Pumps
MYERS • Reciprocating Piston Pumps
NOMAD • AOD Diaphragm
FINISH THOMPSON • ANSI Mag Drive
WARREN RUPP/
SANDPIPER • AOD Diaphragm

CHOPPER & VORTEX PUMPS

FAIRBANKS MORSE

PACKAGED BOOSTER SYSTEMS

AURORA • Intelliquip

SUBMERSIBLE PUMPS

AURORA • Vertical Sewage Pit Pumps
EBARA
ESSCO VORTEX
MYERS • Submersible Solids Handling
WARREN RUPP • 12V & Air Powered

FLUID METERS

AMCO • Oil, Water & Chemical
KOBOLD • Flow Meters
LIQUID CONTROLS • Mag Meters
• Coriolis Mass Meter
• Positive Displacement Meters
• Turbine Meters
TOTAL CONTROL SYSTEMS
• Piston Meters

VERTICAL TURBINE

AMERICAN MARSH • Vertical Turbine
FAIRBANKS MORSE • Vertical, Axial,
Mixed Flow
FYBROC • FRP Vertical Turbine
NATIONAL • Vertical, Axial, Mixed Flow
LAYNE / VERTI-LINE • Vertical Turbine
PRIME PUMP • Axial, Mixed Flow

COMPRESSORS & BLOWERS

CHICAGO PNEUMATIC • Reciprocating
AIRTECH • Vacuum Systems
BEKO • Air Treatment
HITACHI • Oil Free & Scroll
GARDNER DENVER • P.D. Blowers
SULLAIR • Rotary Screw

MECHANICAL SEALS

CHESTERTON • Mechanical Seals
AES • Mechanical Seals
FLEX-A-SEAL • Mechanical Seals
JOHN CRANE • Mechanical Seals

MOTORS & GEAR REDUCERS

BALDOR • Motors & Drives
SIEMENS • Motors & Drives
BLACKMER
NORD
SEW-EURODRIVE
U.S.
WEG
EMOTRON • Power Monitor Protection

WATER PUMPS

AMERICAN MARSH • Self-Priming &
End Suction
AURORA • Water & Boiler Feed
• Vertical Multi-Stage
FAIRBANKS MORSE
GORMAN RUPP • OTS Pumps
EBARA • Self-Priming

ALASKA-ONLY PRODUCTS

HYDROMATIC • Submersible
MARSH-McBIRNEY
CORNELL • Pumps
AEROMIX • Surface Aspirating
E-ONE • Sewer Systems
GORMAN RUPP • Self Priming
McCROMETER • Flow Meters
SIHI by FLOWSERVE
WILO • Submersible Pumps & Mixers

MISCELLANEOUS

KOBOLD • Instrumentation
PETROSORB • Sorbent Pads, Booms
& HazMat Kits
PLATE CONCEPTS • Plate & Frame
Heat Exchangers
VISI-FLO • Sight Flow Indicators

PORTLAND, OR 97210
2800 N.W. 31st Ave.
(503) 227-7867

KENT, WA 98032
22914 64th Ave. South
(253) 850-7867

(866) 577-2755

SAN DIEGO, CA 92111
7257 Ronson Rd. Suite A
(619) 423-7867

FRESNO, CA 93722
3497 West Ashcroft
(559) 227-7210

W. SACRAMENTO, CA 95691
3600 Industrial Blvd. #10
(916) 376-0599

FREMONT, CA 94538
4433 Enterprise St.
(510) 656-7867

www.nwpump.com

GLENDALE, CA 91204
337 Mira Loma Ave.
(818) 409-3030

SPOKANE, WA 99212
6015 E. Valleyway Ave.
(509) 535-3633

PHOENIX, AZ 85034
202 South 29th Street
(602) 484-7944

ANAHEIM, CA 92801
1271 N. Patt Street
(714) 879-2001



ANCHORAGE, AK 99518
1041 East 70th Ave.
(907) 277-7867

HONOLULU, HI 96819
841 Mapunapuna St.
(808) 842-7867

PASCO, WA 99301
925 N. California Ave.
(509) 586-4151

TUCSON, AZ 85713
1991 E. Ajo Way
(520) 628-7867

BOISE, ID 83713
11677 W. President Drive
(208) 376-0109

BILLINGS, MT 59102
1207 S. 32nd Street W. Ste. B
(406) 896-6500