

Continental 
The Future in Motion



Industrial Hose
Insta-Lock™ Couplings

www.contitech.us

ContiTech

Innovative Coupling and Hose Systems from the Name You Trust

Continental ContiTech has long been known for innovative solutions and product offerings in industrial hose. In an effort to create the best couplings and hose systems available in the industry, we consulted with our distributors and end-users to discover which features are most desired and useful in real-world applications. Every element was studied and scrutinized, including the shape of the handles, length of the shank, thickness of the body - even the design of the dust cap.

The end result is the revolutionary Insta-Lock™ cam and groove coupling system that was designed to work seamlessly with our industrial hose products. The patented coupling system boasts no fewer than 10 unique features that help improve longevity, operator comfort and productivity.

These couplings are designed specifically as a system, for use with Continental ContiTech branded hose, and can be used in a variety of applications and industries.

Many solutions, one source

Whatever the industry, application or environment, you can count on your Continental ContiTech Distributor to bring creative and realistic solutions to the table.

As your single source for industrial hose and couplings solutions, your distributor is always available for expert consultation and advice on hose assemblies, as well as the complete breadth of products from the Continental ContiTech brand.

Metal Solutions for Your Application

Insta-Lock™ couplings are available in aluminum, 316 stainless steel and brass, so you can choose the alloy that is best suited to your application, including military.

Aluminum

Aluminum couplings for heavy-duty, non-spark-resistant applications are lightweight, making them ideal in environments where weight is a consideration. Aluminum is also well suited for:

- › Petroleum transfer
- › Oil suction discharge
- › Water suction discharge

Aluminum couplings are available in Part A, Part B, Part C, Part D, Part E, Part F, Dust Cap, Dust Plug and Jump Sizes.

Aluminum couplings are manufactured from ASTM B26 alloy 713-T5 aluminum, which meets ASTM specifications for cam and groove couplings.

316 Stainless Steel

Stainless steel couplings are desired for their durability and outstanding corrosion resistance. Stainless steel is also well suited for:

- › Chemical transfer
- › Corrosive environments
- › Pre-processed foods

Stainless steel couplings are available in Part A, Part B, Part C, Part D, Part E, Part F, Dust Cap and Dust Plug.

Stainless steel couplings are manufactured from ASTM A351 casting alloy CF8M (aka 316 stainless), which meets ASTM and military specifications for cam and groove couplings.

Brass

Brass is the preferred coupling material for applications in which spark resistance is needed. Brass is also well suited for:

- › Steel processing
- › Marine applications
- › Corrosive environments

Brass couplings are available in Part A, Part B, Part C, Part D, Part E, Part F, Dust Cap and Dust Plug.

Brass couplings are manufactured from ASTM B62 CDA 836 casting brass, which meets ASTM and military specifications for cam and groove couplings.

All Insta-Lock parts are interchangeable with any MIL standard parts.



Full Line Solutions

Part A

Male adapters x female thread

Available in aluminum, 316 stainless steel and brass

Typically connects to male NPT on a pipe or manifold. Mates with PART C on hose assembly that needs to be regularly connected and disconnected. Available in 1/2" to 6" diameters.



Part D



Part A

Part B

Female couplers x male NPT thread

Available in aluminum, 316 stainless steel and brass

Typically connects to male NPT on a pipe or manifold. Mates with PART E on hose assembly, which needs to be regularly connected and disconnected. Available in 1/2" to 6" diameters.



Part C

Female couplers x hose shank

Available in aluminum, 316 stainless steel and brass

Can be attached to a rubber hose with the use of interlocking ferrules, crimp sleeves or bands. Available in 1/2" to 6" diameters.



Part B

Part D

Female couplers x female thread

Available in aluminum, 316 stainless steel and brass

Typically connects to male NPT on a pipe or manifold. Mates with PART E on hose assembly, which needs to be regularly connected and disconnected. Mates to male NPT x hose shank fittings. Available in 1/2" to 6" diameters.

Part C

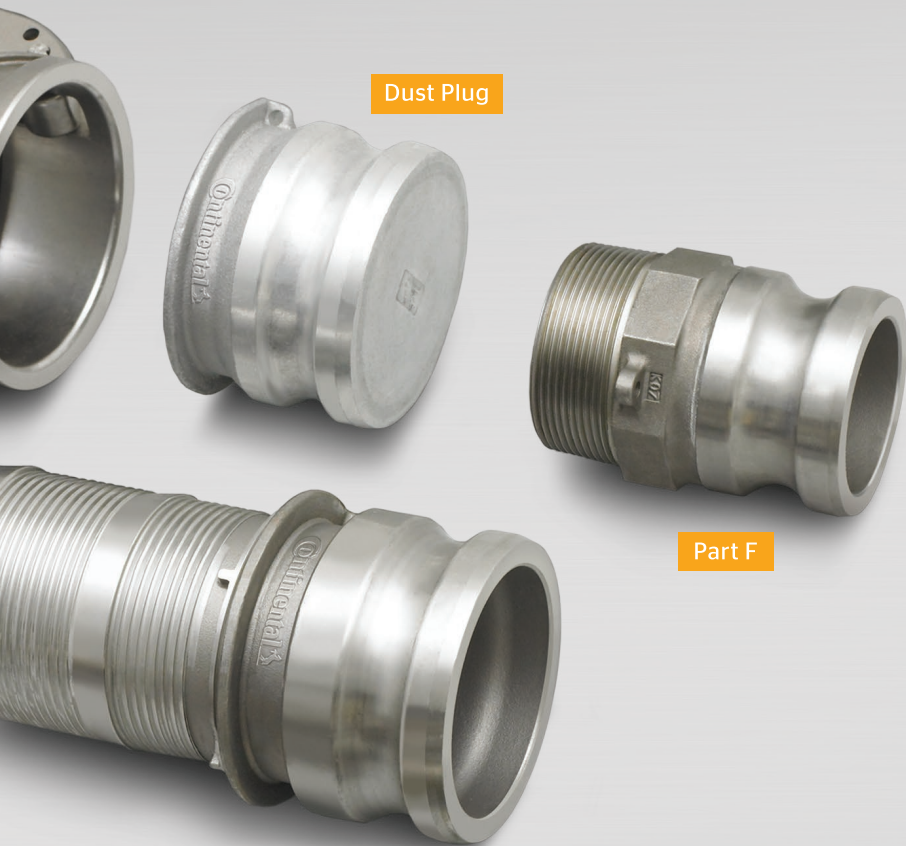
Part E

Male adapters x hose shank

Available in aluminum, 316 stainless steel and brass

Can be attached to rubber hose with the use of interlocking ferrules, crimp sleeves or bands. Available in 1/2" to 6" diameters.





Dust Plug

Part F

Part F

Male adapters x male thread
Available in aluminum, 316 stainless steel and brass

Typically connects to male NPT on a pipe or manifold. Mates with PART C on hose assembly, which needs to be regularly connected and disconnected. Available in 1/2" to 6" diameters.

Dust Plug

For use with all couplers
Available in aluminum, 316 stainless steel and brass

Patented dust plug used to seal the pipe system and hose assemblies during non-use or transfer of assembly. Mating parts are Part C, Part B and Part D. Unique inverted design allows for less product spillage when plug is removed. Not to be used in pressure applications. Available in 1/2" to 6" diameters.



Part E

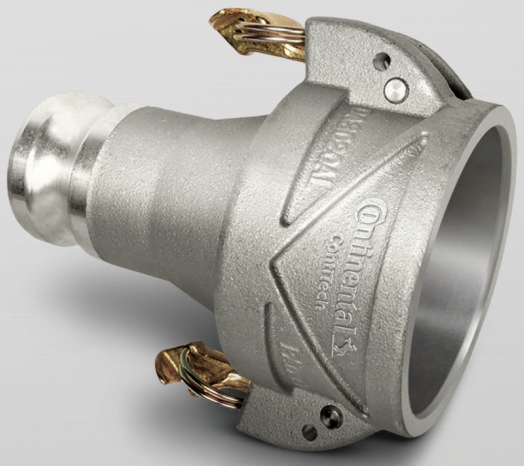
Dust Cap

For use with adapters
Available in aluminum, 316 stainless steel and brass

Used to seal the pipe system and hose assemblies during non-use or transfer of assembly. Mating parts are Part A, Part E and Part F. Not to be used in pressure applications. Available in 1/2" to 6" diameters.



Dust Cap



Jump Sizes

Jump Sizes

Available in aluminum

- › Female coupler x male adapter
- › Female coupler x female coupler
- › Male x male spool adapter

Pressure Rating

Sizes 1/2" to 2", 250 psi; sizes 2 1/2" to 4", 150 psi; sizes 5" to 6", 75 psi. Recommended working pressure ratings based on ambient temperature 70°F (21.1°C).

Part C Coupling

The most complex and popular of the Continental ContiTech family of couplings, Part C couplings are relied upon by engineers and operators worldwide to provide secure and dependable couplings for a variety of applications, including chemical, water, petroleum and military.

1. Precision-machined hose shanks

Superior holding power and performance whether crimping or banding.

2. Patented "Hose Stop" feature

Protrusions on Part E and Part C hose shanks prevent hose from elongating into the fitting when crimped.



The innovative Insta-Lock™ cam and groove coupling system is the culmination of years of laboratory research and in-the-field experience. The result is an amazingly durable, reliable and secure coupling system suitable for numerous industrial hose applications. Insta-Lock has 10 unique features that make it the preferred coupling system for operators looking for greater convenience, security and productivity.

10. Serration profile meets ASTM specifications.

9. Smooth flow design


Couplings are designed to dramatically reduce internal turbulence, significantly increasing flow rates.

Patented Insta-Lock™ Coupling Technology

Hose Prep

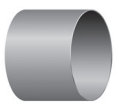
The Insta-Lock™ line includes interlocking ferrules and crimp sleeves to provide maximum gripping power for consistent and reliable hose assemblies.

Insta-Lock™ Interlocking Ferrules



Available in plated carbon and 304 stainless steel. Used to attach Part C, Part E and hose stems to hose. Hose ends are manufactured with a specially designed interlock groove to secure the crimp style, attaching the ferrule permanently onto the coupling to provide a uniform grip between the ferrule, hose and the coupling body.

Crimp Sleeves



Available in stainless steel and aluminum. Used to attach Part C and Part E couplings to petroleum drop hose. Provides uniform grip between crimp sleeve, hose and coupling body. Aluminum sleeves also available for lower-pressure petroleum drop hose.

Repair/Replacement Parts

Replacement parts and gaskets are available to maximize the working life of Insta-Lock couplings.

Insta-Lock™ Repair Kits



Available in brass and stainless steel. Designed exclusively for Insta-Lock fittings. Contains handles, rings and pins for repair of damaged or vandalized couplings.

Insta-Lock™ Replacement Gaskets



Available in Nitrile, Teflon®, Viton®, Polychloroprene, White Polychloroprene and Silicone. Designed specifically for Insta-Lock couplers. Bagged in lots of 10 or 25, depending on size and material.

3. Lock-out padlock holes

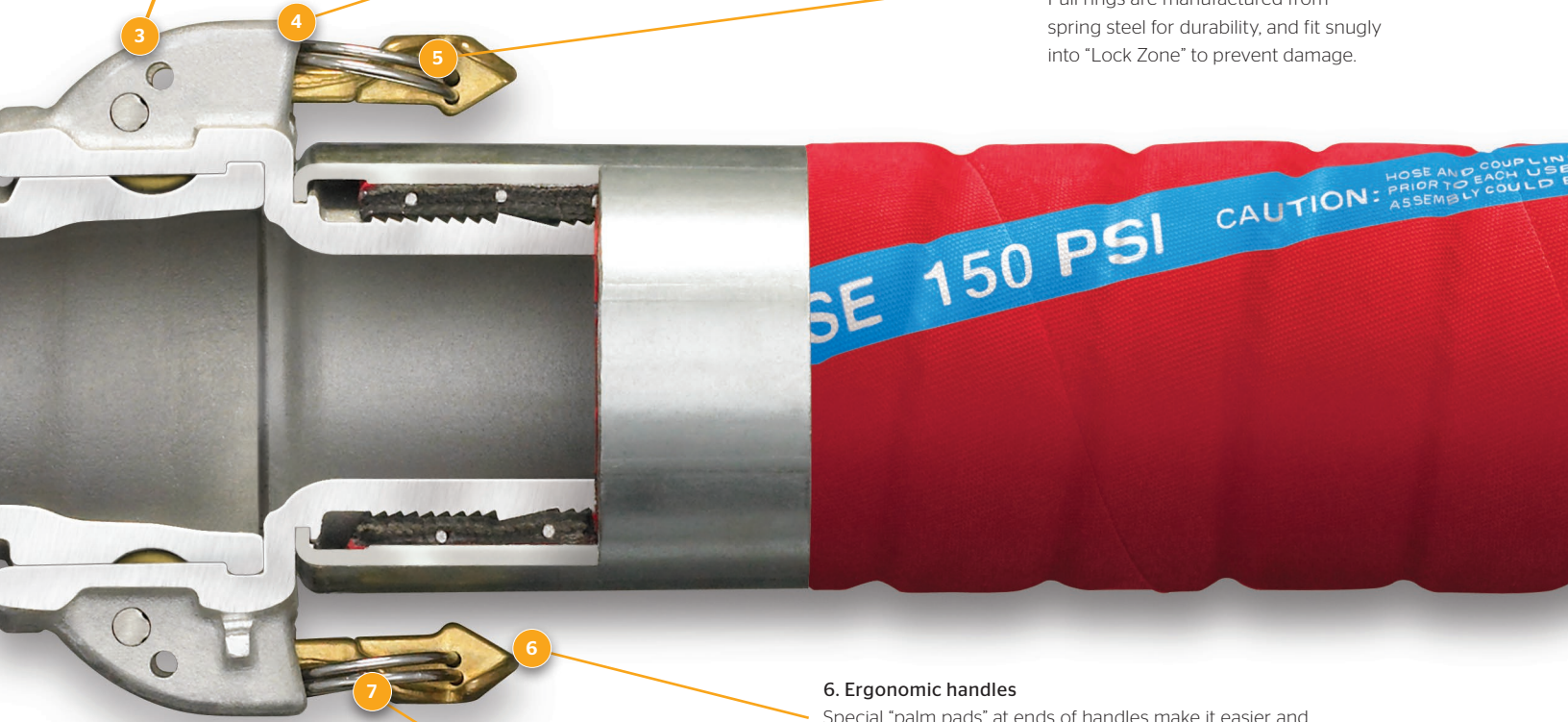
When closed, a set of holes in the "Lock Zone" allow the insertion of a padlock. Patented design stays secure even if the handle pins are damaged or removed. (Use Master Lock® 7LJ or 8LJ part number)

4. No-snag design

Pull rings fit into "Lock Zone" so coupling does not catch on obstacles when dragged or pulled.

5. Damage-resistant pull rings

Pull rings are manufactured from spring steel for durability, and fit snugly into "Lock Zone" to prevent damage.



6. Ergonomic handles

Special "palm pads" at ends of handles make it easier and more comfortable to lock. Pads also keep pull rings from twisting open too far, making it easier to uncouple.

7. Patented automatic locking handles

Simple yet durable locking design has no bulky springs or latches to break, get lost or fill with dirt. Pull rings fit into specially designed "Lock Zone" of the coupler to protect handles from abuse and wear.



8. Damage-resistant design

V-shaped struts on all coupler bodies enhance strength and reduce "egging" that can occur when an assembly is repeatedly dropped.

Fuel Compatibility and Insta-Lock™ Couplings

| Agent | Temp (°F/°C) | 316 SS | Aluminum | Brass |
|--------|--------------|--------|----------|-------|
| E-100* | 100/38 | A | B | A |
| E-85 | 100/38 | I | I | I |
| E-15 | 100/38 | I | I | I |
| B-100 | 100/38 | A | I | X |
| B-50 | 100/38 | A | I | X |
| B-20 | 100/38 | A | B | I |

A = May be used for continuous service

B = May be used for intermittent service

I = Insufficient data

X = Do not use

*Same as ethyl alcohol

ContiTech



Contact

ContiTech AG
NAFTA Headquarters
703 S. Cleveland Massillon Road
Fairlawn, OH 44333-3023 U.S.A.
1-800-235-4632

Canada

1-888-275-4397
FAX 1-888-464-4397

Mexico

1-800-439-7373
FAX 1-800-062-0918

Germany

+49 (0)511 938 02
mailservice@contitech.de

www.contitech.us

ContiTech. Engineering Next Level

As a division of the Continental Group, ContiTech is a recognized innovation and technology leader in natural rubber and plastics. As an industry partner with a firm future ahead of us, we engineer solutions both with and for our customers around the world. Our bespoke solutions are specially tailored to meet the needs of the market. With extensive expertise in materials and processes, we are able to develop cutting-edge technologies while ensuring we make responsible use of resources. We are quick to respond to important technological trends, such as function integration, lightweight engineering and the reduction of complexity, and offer a range of relevant products and services. That way, when you need us, you'll find we're already there.