



WELDING AAS

INDUSTRY, MANUFACTURING, & TRADES



SUGGESTED Schedule to Earn an Associate Degree

If the classes listed below don't fit your schedule or you're planning to start after fall quarter, work with an advisor to develop your specialized education plan.

Year One

| Fall | Credits |
|---|---------|
| • MAP 117: Applied Math for Workforce Programs I..... | 5 |
| • WLD 110: Welding Theory I..... | 5 |
| • WLD 111: Welding Process I | 6 |
| • WLD 112: Thermal Cutting and Welding..... | 3 |
| • WLD 151: Technical Drawings Interpretation..... | 3 |

Winter

| | |
|--|---|
| • ENGL 109: Applied Technical Writing OR ENGL&101: Composition I..... | 5 |
| • WLD 120: Welding Theory II..... | 5 |
| • WLD 121: Welding Process II..... | 6 |
| • WLD 122: Gas Metal Arc Welding I..... | 3 |
| • WLD 152: Welding Layout I..... | 3 |

Spring

| | |
|---|---|
| • PSYC&100: General Psychology OR SOC&101: Intro to Sociology..... | 5 |
| • WLD 130: Welding Theory III..... | 5 |
| • WLD 131: Welding Process III..... | 6 |
| • WLD 132: Gas Tungsten Arc Welding I (TIG)..... | 3 |
| • WLD 153: Welding Layout II..... | 3 |

Year Two

| Fall | |
|--|---|
| • CMST&210: Interpersonal Communication OR CMST&220: Public Speaking..... | 5 |
| • WLD 205: Weld Test Methods..... | 4 |
| • WLD 212: Gas Metal Arc Welding II..... | 6 |
| • Select one of the following OPTIONS | |
| Structural = WLD 241: Structural Weld Process I..... | 6 |
| Production = WLD 261: Production Weld Process I..... | 6 |
| Pipe = WLD 281: Pipe Welding I..... | 6 |

Winter

| | |
|--|---|
| • FAD 150: Industrial First Aid..... | 2 |
| • WLD 206: Welding Codes and Standards..... | 4 |
| • Select one of the following OPTIONS | |
| Structural = WLD 242: Structural Welding I..... | 3 |
| WLD 243: Structural Weld Process II..... | 6 |
| Production = WLD 262: Production Welding I..... | 3 |
| WLD 263: Production Weld Process II..... | 6 |
| Pipe = WLD 282: Gas Tungsten Arc Welding II (TIG)..... | 3 |
| WLD 283 Pipe Welding II..... | 6 |

Spring

| | |
|---|---|
| • WLD 207: Welding Metallurgy..... | 4 |
| • Select one of the following OPTIONS | |
| Structural = WLD 244: Submerged Arc Welding..... | 3 |
| WLD 245: Structural Weld Process III..... | 6 |
| Production = WLD 264: Production Welding II..... | 3 |
| WLD 265: Production Weld Process III..... | 6 |
| Pipe = WLD 284: Gas Tungsten Arc Welding III (TIG)..... | 3 |
| WLD 285: Pipe Welding III..... | 6 |



TO DO'S:

QUARTER 1

- APPLY FOR FAFSA OR WASFA FOR NEXT YEAR
- SET UP YOUR BANKMOBILE ACCOUNT
- GET FAMILIAR WITH YOUR CTCLINK STUDENT HOMEPAGE
- MEET WITH YOUR ADVISOR

QUARTER 2

- MAKE AN EDUCATION PLAN WITH YOUR ADVISOR
- APPLY FOR BBCC FOUNDATION SCHOLARSHIPS

QUARTER 3

- MEET WITH YOUR ADVISOR

QUARTER 4

- UPDATE YOUR EDUCATION PLAN WITH YOUR ADVISOR

QUARTER 5

- APPLY FOR GRADUATION (AFTER ENROLLING IN YOUR FINAL QUARTER OF CLASSES)

QUARTER 6

- ORDER CAP AND GOWN
- ATTEND GRADUATION!
- EXPLORE EMPLOYMENT OPPORTUNITIES

Total Credits Required: 106+

Career Outlook

The Welding program is designed to develop entry level employment skills for those seeking career opportunities in welding. Production, sheet metal workers, iron workers, steam fitters, construction, manufacturing, repair, etc. jobs are all in high demand.

Future Education Opportunities

This degree prepares students to pursue the Bachelor or Applied Science - Applied Management at Big Bend Community College. Students with this degree may also consider engineering welding programs at a university.

Find Out More

509.793.2262 or shawnm@bigbend.edu
<https://www.bigbend.edu/academics/welding/>



Students are required to purchase tools and safety equipment.

Length of Program

106+ credits = 6 quarters* if you take 16-18 credits each quarter.

*Your specific route may take longer than 6 quarters depending on the number of credits you take each quarter and where you start in your math and English pathways.

Which Quarter Can I Begin?

This program may be started fall, winter, or spring.

Program Modality

This program must be completed mostly on campus. Some classes may be offered online or hybrid, but labs are on campus.

Helpful Hints

- Students can start lecture courses in any quarter but labs must be taken in sequence before progressing to the next level.
- Pay attention to related instruction early!
- Work closely with your advisor for program planning!

OPPORTUNITY FOR FREE \$\$\$

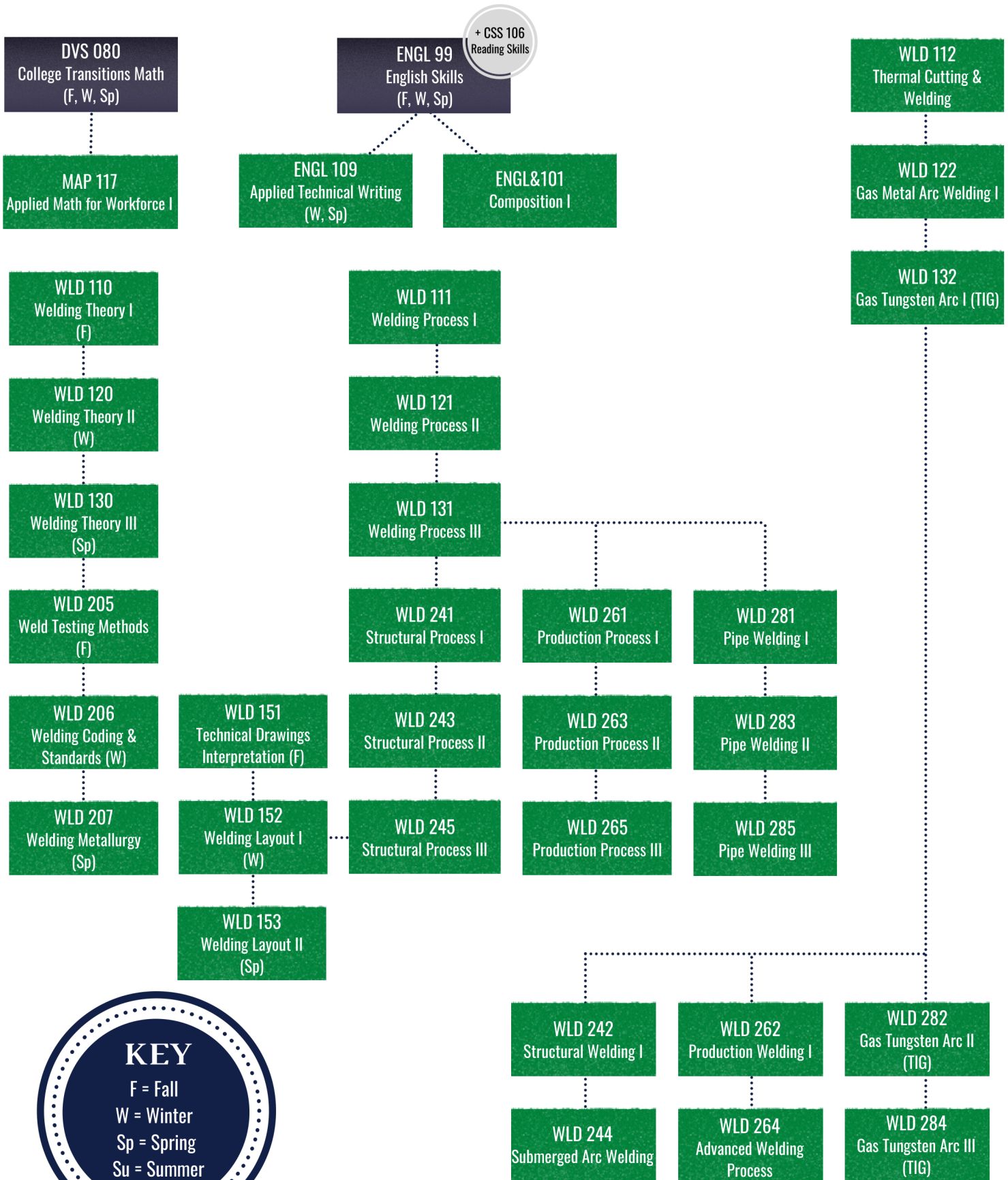
Workforce Education Services provides additional financial assistance for tuition and fees, books, tools, bus passes, and emergency support.

See if you qualify here!



Welding Pre-Requisite Flow Chart

Start by talking with an advisor to determine which courses to take first based on your placement scores.



KEY

F = Fall
 W = Winter
 Sp = Spring
 Su = Summer

My Education Plan

Name: _____

ID #: _____

| | |
|--|--------------|
|  Quarter/Year | Quarter/Year |
| Quarter/Year | Quarter/Year |
| Quarter/Year | Quarter/Year |

My Education Plan

Name: _____

ID #: _____

| | |
|--------------|--------------|
| Quarter/Year | Quarter/Year |
| Quarter/Year | Quarter/Year |
| Quarter/Year | Quarter/Year |



CERTIFICATE OPTIONS

WELDING

Welding Technology Certificate of Achievement

Credits

- CMST&210: Interpersonal Communication OR
CMST&220: Public Speaking.....5
- ENGL 109: Applied Technical Writing OR
ENGL&101: Composition I.....5
- FAD 150: Industrial First Aid.....2
- MAP 117: Applied Math for Workforce Programs I...5
- PSYC&100: General Psychology OR
SOC&101: Intro to Sociology.....5
- WLD 110: Welding Theory I.....5
- WLD 111: Welding Process I6
- WLD 112: Thermal Cutting and Welding.....3
- WLD 120: Welding Theory II.....5
- WLD 121: Welding Process II.....6
- WLD 122: Gas Metal Arc Welding I.....3
- WLD 132: Gas Tungsten Arc Welding I (TIG).....3
- WLD 151: Technical Drawings Interpretation.....3
- WLD 152: Welding Layout I.....3

Total Credits: 59

Welding Technology Certificate of Accomplishment

Credits

- WLD 110: Welding Theory I.....5
- WLD 111: Welding Process I6
- WLD 112: Thermal Cutting and Welding.....3
- WLD 120: Welding Theory II.....5
- WLD 121: Welding Process II.....6
- WLD 122: Gas Metal Arc Welding I.....3
- WLD 132: Gas Tungsten Arc Welding I (TIG).....3
- WLD 151: Technical Drawings Interpretation.....3
- WLD 152: Welding Layout I.....3

Total Credits: 37