

STEVEN MANN

InfoPath with SharePoint® 2013

HOW-TO

SAMS

FREE SAMPLE CHAPTER

SHARE WITH OTHERS



STEVEN MANN

InfoPath with SharePoint® 2013

HOW-TO

SAMS

800 East 96th Street, Indianapolis, Indiana 46240 USA

InfoPath with SharePoint 2013 How-To

Copyright © 2014 by Pearson Education, Inc.

All rights reserved. No part of this book shall be reproduced, stored in a retrieval system, or transmitted by any means, electronic, mechanical, photocopying, recording, or otherwise, without written permission from the publisher. No patent liability is assumed with respect to the use of the information contained herein. Although every precaution has been taken in the preparation of this book, the publisher and author assume no responsibility for errors or omissions. Nor is any liability assumed for damages resulting from the use of the information contained herein.

ISBN-13: 978-0-672-33694-2

ISBN-10: 0-672-33694-4

Library of Congress Control Number: 2013944877

Printed in the United States of America

First Printing: July 2013

Trademarks

All terms mentioned in this book that are known to be trademarks or service marks have been appropriately capitalized. Pearson cannot attest to the accuracy of this information. Use of a term in this book should not be regarded as affecting the validity of any trademark or service mark.

Warning and Disclaimer

Every effort has been made to make this book as complete and as accurate as possible, but no warranty or fitness is implied. The information provided is on an “as is” basis. The author(s) and the publisher shall have neither liability nor responsibility to any person or entity with respect to any loss or damages arising from the information contained in this book or from the use of the CD or programs accompanying it.

Bulk Sales

Pearson offers excellent discounts on this book when ordered in quantity for bulk purchases or special sales. For more information, please contact:

U.S. Corporate and Government Sales

1-800-382-3419

corpsales@pearsontechgroup.com

For sales outside of the U.S., please contact:

International Sales

+1-317-581-3793

international@pearsoned.com

Executive Editor

Greg Wiegand

Executive Editor

Neil Rowe

Development Editor

Mark Renfrow

Managing Editor

Sandra Schroeder

Project Editor

Seth Kerney

Copy Editor

Keith Cline

Indexer

Erika Millen

Proofreader

Kathy Ruiz

Technical Editor

J. Boyd Nolan

Team Coordinator

Cindy Teeters

Book Designer

Mark Shirar

Compositor

Bronkella
Publishing

Contents at a Glance

Introduction	1
Part I: Designing Forms for SharePoint	
1 Use InfoPath Designer 2013	3
2 Create a SharePoint Form with InfoPath Designer	7
3 Use SharePoint Form Controls	21
4 Create SharePoint Form Rules	41
5 SharePoint Form Functions	57
6 Create SharePoint Form Page Designs and Views	71
7 SharePoint List Forms	81
8 Submit and Publish to SharePoint	89
Part II: Business Solutions	
9 Use Data in SharePoint Forms	113
10 Use the InfoPath Form Web Part	151
11 Using Forms in SharePoint Workflows	163
12 Enhance the User Experience	183
13 Using Template Parts to Create Reusable Form Components	203
Part III: Technical Solutions	
14 Customize a Document Information Panel Content Type	213
15 Leverage Visual Studio 2012 with InfoPath	221
16 Dynamically Populate a Repeating Table	229
17 Track Changes in a Form	243
18 Autogenerate Forms	259
Part IV: Administrative Aspects	
19 Use Central Administration to Administer InfoPath Forms Services	267
20 PowerShell	281
21 Managing Form Permissions	293

Part V: Troubleshooting

22 General Form Issues 301
23 Resolve Deployment and Publishing Issues 311
24 Resolve Form Submission Issues 315

Part VI: Appendixes

A Auto-Increment Repeating Tables 321
B Upload File Attachments in Forms to a Document Library 323
C Add Picture Files to InfoPath 327
Index 331

Table of Contents

Introduction	1
Overview of This Book	1
How to Benefit from This Book	1
What Is New in This Book?	2
How to Continue Expanding Your Knowledge	2
Part I: Designing Forms for SharePoint	
1 Use InfoPath Designer 2013	3
Why Use an InfoPath Form?	3
What Does InfoPath Do for My Lists?	4
Why Use InfoPath Forms in Workflows?	4
How Does InfoPath Integrate with My Data?	4
InfoPath Versus Web Controls and Web Parts	5
What Is the InfoPath Web Part?	5
Getting Started	5
2 Create a SharePoint Form with InfoPath Designer	7
Design a SharePoint Form Using the Blank Form Template	9
Add Controls	10
Preview Your Form	11
Name Your Data Fields	12
Add Submit Options	13
Publish Your Form	15
Use Your Form in SharePoint	17
Create a Form Library from InfoPath	18
Design a SharePoint Form Using the SharePoint Form Library Template	20
3 Use SharePoint Form Controls	21
What Are Input Controls?	22
What Are Object Controls?	23
What Are Container Controls?	24
Drag Controls on Your Form	24
Allow Users to Enter Text	25
Make a Text Box Read-Only	25
Make a Text Box Multiline	26

Allow Users to Select a Single Selection from a List of Items	27
Allow Users to Select Multiple Items from a List of Items	29
Allow Users to Select an Optional Single Choice	30
Allow Users to Select from Various Options	31
Allow Users to Enter a Date/Time	32
Allow Users to Select a Person	34
Allow Users to Select from a SharePoint External Content Type	35
Allow Users to Initiate an Action	35
Show Optional Controls on Your Form	37
Allow Users to Enter Multiple Instances of the Same Fields	37
Allow Users to Choose Which Set of Fields to Use	38
Make a Control/Field Required	40
4 Create SharePoint Form Rules	41
Hide or Show Controls Based on a Selected Option	42
Format an Entry Based on a Condition	45
Implement a Validation Rule	47
Add an Action Rule to a Button	49
Use Rules for Form Submission	50
Use Rules for Form Loading	53
Validate Data Entry Using Patterns	54
5 SharePoint Form Functions	57
Use the SharePoint URL Functions	58
Calculate a Future Date	59
Get the Current SharePoint User	60
Remove Leading and Trailing Spaces from a Field Value	63
Remove All Spaces from an Entry	63
Default a Blank Amount to Zero	64
Calculate the Sum of All Items	65
Determine a Count of the Items Entered	67
Obtain a Portion of an Entered String	68
Obtain the Username from SharePoint Online (Office 365)	69
Add Years to a Date Preserving the Month and Day	70
6 Create SharePoint Form Page Designs and Views	71
Change the Current View Name	72
Create a New View	73
Change the Default View	74
Make a View Read-Only	75
Prevent a User from Selecting a View	75

Use a View for Printing	77
Use a Different Layout for Your Form	77
Use a Theme for Your Form	78
Add Headers/Footers to Your Form	79
Insert a Table Layout into Your Form	80
Modify a Table Layout in Your Form	80

7 SharePoint List Forms 81

Use a Form to Create a SharePoint List	82
Modify the Form of an Existing SharePoint List	86
Set Your List Form Template Back to the Default Form	87

8 Submit and Publish to SharePoint 89

Enable Your Form for Submission	90
Configure Email Submission	91
Publish Your Form to Email	93
Configure SharePoint Library Submission	96
Publish Your Form to a SharePoint Library	97
Use Multiple Forms in SharePoint Libraries	101
Configure Web Service Submission	105
Configure SharePoint Server Connection Submission	107
Modify the Available Menu Buttons During Form Submission	110

Part II: Business Solutions

9 Use Data in SharePoint Forms 113

Use Data From a Database	114
Convert an InfoPath Connection to a SharePoint Connection File	119
Use Data From a SharePoint List	121
Use Data From a SharePoint Data Connection File	123
Use Data from a (SOAP) Web Service	124
Populate a Drop-Down List with Data	126
Populate a Drop-Down List with Data Based on Another Selection (Cascading Drop-Down)	129
Display Data from a SharePoint List	133
Display a Repeating Table from a SharePoint List	137
Leverage External Data from a SharePoint External Content Type (Business Data Connectivity Services)	142
Leverage External Data from a REST Web Service	144

10 Use the InfoPath Form Web Part	151
Add an InfoPath Form Web Part to a SharePoint Web Part Page	152
Create a Master/Detail Display Form for SharePoint Lists	154
Expose Form Fields as Web Part Connection Parameters	156
Create a Form to Send Data to Web Parts	158
11 Using Forms in SharePoint Workflows	163
Create a SharePoint Workflow for a Form Library	164
Include a Link to the Form in an Email	168
Add a Task to the Workflow	170
Perform Workflow Actions Based on Form Values	172
Perform One Workflow Action or Another (But Not Both)	175
Get a User from a People/Group Picker Control	177
Customize the Task Form	180
Add Form Parameters Used When Starting Your Workflow	181
12 Enhance the User Experience	183
Display a Read-Only Value	184
Compact Sections of Fields/Controls	187
Configure Dynamic Sections	187
Make Screen Tips Informative for Validation	190
Notify the User of Successful Submission	190
Create a Tabbed Navigation in Your Form	194
Use Pictures as Choices	198
13 Using Template Parts to Create Reusable Form Components	203
Create a New Template Part	204
Add Common Data Connections	205
Add Common Controls	205
Add Common Fields	205
Save Your Form Template Part	206
Add Your Template Part as a Custom Control	206
Use Your Template Part as a Control	209
Change the Name of Your Custom Control	210
Change the Icon of Your Custom Control	211

Part III: Technical Solutions

14 Customize a Document Information Panel Content Type	213
Create the Document Library	214
Add Columns to Your DIP	215
Modify the DIP	218

15 Leverage Visual Studio 2012 with InfoPath	221
Access Your Form Within a Visual Studio Solution	222
Create an InfoPath 2013 Add-In	225
Create a Custom Task Pane	226
16 Dynamically Populate a Repeating Table	229
Set Up the Initial Form	230
Create a Changed Event Method	232
Create a Namespace Variable	233
Access the Secondary Data Source	234
Loop Through the Secondary Data Source	235
Populate the Repeating Table	236
Clear Previous Entries	237
What Does the Final Solution Look Like?	237
Implement a Nested Repeating Table Solution	239
17 Track Changes in a Form	243
Set Up the Form for Tracking Changes	244
Add Changed Event Code for Tracking Changes	246
Apply Rich Text to the Entry	250
Show Only One Version at a Time	252
Display a Changes Counter	256
Display the User Who Made the Modification	257
18 Autogenerate Forms	259
Create a Class Object of Your Form	260
Create Form Generation Code	263
Upload the Form Object to a Form Library	265

Part IV: Administrative Aspects

19 Use Central Administration to Administer InfoPath Forms Services	267
Access the InfoPath Form Services Options	268
Browser-Enable Form Templates	269
Throttle Data Connection Timeouts	269
Throttle the Data Connection Response Size	270
Modify Authentication Settings	271
Configure Session State	272
Upload a Form Template	273
What Happens When a Form Is Uploaded?	275
Manage Form Templates	276
What Happens When a Form Is Activated to a Site Collection?	277

Enable the Web Service Proxy	277
Manage Data Connections	279
20 PowerShell	281
Access SharePoint 2013 Management Shell	282
Browser-Enable Form Templates	283
Throttle Data Connection Timeouts	284
Throttle the Data Connection Response Size	284
Modify Authentication Settings	285
Configure Session State	286
Enable View State	287
Verify and Upload a Form Template	287
Upload Multiple Form Templates at Once	288
Activate or Deactivate a Form to a Site Collection	288
Remove a Form from InfoPath Form Services	289
Quiesce a Form from InfoPath Form Services	289
Enable the Web Service Proxy	290
21 Managing Form Permissions	293
Create Unique Permissions on a Form Library	294
Grant Users Permissions	295
Create a Permission Level for Your Form Library	296
Edit a Group's Permission Level	297
Create a Submit-Only Permission Level	299
Part V: Troubleshooting	
22 General Form Issues	301
Resolve: Issue Accessing Data Source	302
Resolve: SQL Credential Issue	303
Resolve: Business Data Connectivity Metadata Store Is Currently Unavailable	304
Resolve: Picker Issue Obtaining Business Data	305
Resolve: Missing Business Data Connectivity Services Client Components	306
Resolve: SharePoint Designer Task List Creation Error	307
Resolve: Missing Programmability Components	308
Resolve: Error Loading the Form	308
Resolve: Security Exception Using Code-Behind	309

23 Resolve Deployment and Publishing Issues	311
Resolve: No File with URL in This Web	312
Resolve: Form Cannot Be Browser Enabled on Selected Site	312
Resolve: Form Template Has Not Been Published	314
24 Resolve Form Submission Issues	315
Troubleshoot General Submission Issues	316
Resolve: SharePoint Location Is Read-Only	316
Resolve: Document Library Already Contains a File with the Same Name	317
Resolve: Errors Submitting to a Web Service	318

Part VI: Appendixes

A Auto-Increment Repeating Tables	321
Use the <code>position()</code> Function in a Calculated Value Control	321
Use the <code>count()</code> Function	321
Use a Counter Field with Form Rules	322
B Upload File Attachments in Forms to a Document Library	323
Form Scenario	323
Submit Button and Code-Behind Setup	323
Event Handler Code	324
Deployment	325
C Add Picture Files to InfoPath	327
Add a Picture as a Resource File	327
Use a Resource File Picture	328
Index	331

About the Author

Steve Mann was born and raised in Philadelphia, Pennsylvania, where he still resides today. He is an enterprise applications engineer for Morgan Lewis and has nearly 20 years of professional experience. Steve graduated Drexel University in 1993.

Steve has authored and coauthored several books related to the subject of SharePoint Server, PowerShell, managed metadata, and business intelligence. You can find Steve's blog at <http://www.SteveTheManMann.com>.

Dedication

In loving memory of my father, Robert Mann, who didn't deserve to go through what he did. It is hard to beat cancer twice and I am proud of him for being so brave the second time around.

I love you dad!

Acknowledgments

Special thanks to Richard Phillips, one of my previous customers but now my manager, who challenged me on InfoPath solutions within a SharePoint environment. Many ideas came from my experiences building solutions for Rich.

Also, thanks to Gerard Crockenberg, Cindy Mocharnuk, and Kristin Kaempf, who assisted in the tracking-changes ideas and implementation back in InfoPath 2007; this is still an awesome solution.

Thanks to Pranab Paul, who works with Microsoft India as a consultant in Microsoft Consulting Services, for allowing me to use his code for uploading file attachments from an InfoPath form (Appendix B).

My SharePoint 2013 explorations were also made possible by the assistance of Alan Luu and Biju Samuel at Morgan Lewis. Thanks for helping with the environments and architecture, configuration, databases, and business intelligence installations.

Finally, once again, thanks to Sams Publishing and Neil Rowe for making this book a reality and for giving me the opportunity to share my ideas and solutions.

Tell Us What You Think!

As the reader of this book, you are our most important critic and commentator. We value your opinion and want to know what we're doing right, what we could do better, what areas you'd like to see us publish in, and any other words of wisdom you're willing to pass our way.

We welcome your comments. You can email or write us directly to let us know what you did or didn't like about this book—as well as what we can do to make our books stronger.

Please note that we cannot help you with technical problems related to the topic of this book.

When you write, please be sure to include this book's title and author as well as your name and phone or fax number. We will carefully review your comments and share them with the author and editors who worked on the book.

Email: consumer@samspublishing.com

Mail: Sams Publishing
ATTN: Reader Feedback
800 East 96th Street
Indianapolis, IN 46240 USA

Reader Services

Visit our website and register this book at informit.com/register for convenient access to any updates, downloads, or errata that might be available for this book.

This page intentionally left blank

Introduction

Overview of This Book

With the latest release of Microsoft SharePoint Server 2013, the entire Office platform has become even more integrated than before. This does not leave out Microsoft InfoPath Designer 2013. There has been a close bond between SharePoint and InfoPath since the 2010 release.

This book covers all the aspects within InfoPath and SharePoint 2013 that relate to creating and developing business solutions. It is geared toward both technical and semi-technical professionals and does not require a degree in computer programming.

The scenario-based presentation of the material provides not only a great tutorial but also an in-depth reference for accomplishing integral InfoPath tasks within the SharePoint platform.

How to Benefit from This Book

You'll find this book easy to read from cover to cover. The goal is to gain a full understanding of InfoPath with SharePoint 2013. The overall content presents as a tutorial but also serves as good reference material. Some material provides an overview of functionality or features, but most of the content is hands-on or provides a hands-on view.

Keeping both beginners and experts in mind, this book provides both breadth and depth to the usage of InfoPath and shows you how to leverage it to create business solutions. We designed the content of this book to appeal to a wide audience at various technical levels:

- ▶ Business analysts
- ▶ Information workers
- ▶ IT professionals
- ▶ IT developers
- ▶ Collaboration managers
- ▶ Content managers

You can access the code samples used in this book by registering on the book's website at <http://informat.com/register>. Go to this URL, sign in, and enter the ISBN to register (free site registration required). After you register, look on your Account page, under Registered Products, for a link to Access Bonus Content.

What Is New in This Book?

Just like a fine wine, certain titles get better with age. When Steve Mann wrote the 2010 version of this book, he set out to provide a well-rounded how-to guide that provided in-depth knowledge of working with InfoPath and SharePoint, attempting to provide answers to everything you need to know.

However, Steve kept notes from his experiences thereafter of ideas and procedures that were not covered in the 2010 version. Based on these, Steve has expanded his treasure trove of InfoPath how-to nuggets in this edition using InfoPath Designer 2013 within a SharePoint 2013 environment.

How to Continue Expanding Your Knowledge

We hope that this book provides foundational knowledge about InfoPath solutions with SharePoint 2013 and that you find everything you need here. However, business requirements and changing needs usually require custom solutions that cannot all be possibly documented in one location.

Therefore, the following resources are great ways to stay current and find additional answers if necessary:

Microsoft InfoPath Team Blog: <http://blogs.msdn.com/infopath/>

Microsoft Office Developer Center: <http://msdn.microsoft.com/en-us/office/default.aspx>

Author's Blog: <http://stevethemanmann.com/>

Email the author with any questions/issues: steve@stevethemanmann.com

CHAPTER 2

Create a SharePoint Form with InfoPath Designer

IN THIS CHAPTER

- ▶ Design a SharePoint Form Using the Blank Form Template
- ▶ Add Controls
- ▶ Preview Your Form
- ▶ Name Your Data Fields
- ▶ Add Submit Options
- ▶ Publish Your Form
- ▶ Use Your Form in SharePoint
- ▶ Create a Form Library from InfoPath
- ▶ Design a SharePoint Form Using the SharePoint Form Library Template

This chapter shows you how to generate an InfoPath form for use in SharePoint. The following chapters expand on the functionality and options available. This chapter serves as an end-to-end overall guide to creating a form and publishing it to SharePoint. Other chapters may cover some details or steps in further detail.

The first step to create SharePoint forms is to open InfoPath Designer. From there, you have a number of options. When designing a new form, you have the following template options:

SharePoint List: Use this template to generate an interface for interacting with a SharePoint list. The generated form can create the actual list in SharePoint.

SharePoint Form Library: Use this template to generate a form library that stores instances of your form from user input. The content type of this form library is your form template.

E-mail: Use this template to generate a form that can be used within emails.

Blank Form: This is the base web browser form template used to generate SharePoint forms from scratch.

Blank Form (InfoPath Filler): This base client form template is used to generate forms that require users to have InfoPath installed locally on their computers. The forms created using this template are not rendered in a web browser.

Database: Use this template to quickly create a form based on a database table from Access or SQL Server.

Web Service: Use this template to generate a form that queries a web service for information.

XML or Schema: This template is used to easily replicate the data structure of an Extensible Markup Language (XML) file or schema (XSD).

Data Connection File: Use this template to quickly generate a form that uses a data connection file stored in SharePoint.

Convert Existing Form: The name is confusing because you would think this is used to convert an existing InfoPath form, but this template actually uses converters to import Microsoft Word or Microsoft Excel documents and convert them into InfoPath forms.

Document Information Panel: InfoPath now makes it easier to customize input into Office documents based on SharePoint columns. Use this template to generate the data entry portion of a Microsoft Office document that is stored within a SharePoint library and contains additional fields for user entry.

Blank 2010 Form: Use this form to create a web-based InfoPath 2010 form.

Blank 2010 Form (InfoPath Filler): Use this form to create a client-based InfoPath 2010 form. Users need InfoPath 2010 installed locally on their computers.

NOTE Throughout this book, the terms InfoPath form and SharePoint form may be used interchangeably. A SharePoint form is essentially a web-enabled InfoPath form with the intention to be able to use the form in SharePoint.

Design a SharePoint Form Using the Blank Form Template

Scenario/Problem: You want to create a new form for user input to be used in SharePoint.

Solution: When you open InfoPath Designer 2013, you are automatically taken to the File, New page, as shown in Figure 2.1. Either double-click Blank Form or select the Blank Form button and click the Design Form button to create a new blank form.

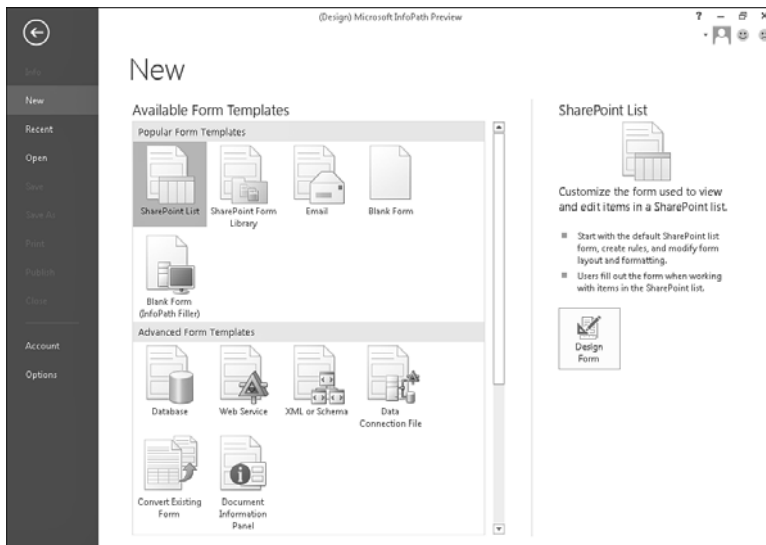


FIGURE 2.1 The New page provides templates for designing new forms.

To design a simple form, follow these steps:

1. Click the Click to Add Title text that appears and enter a title for the form.
2. Click in the bottom section of the form where it states Add Tables.
3. Click the Insert ribbon bar menu and select the Two-Column 4 table in the Tables section. This is a layout table that assists in aligning the labels and controls on your form.
4. Click the File menu and then click Save.
5. Enter a name for the form file and click OK. This saves a local copy of the form.

We now have a base form to which we can start adding controls, as shown in Figure 2.2.

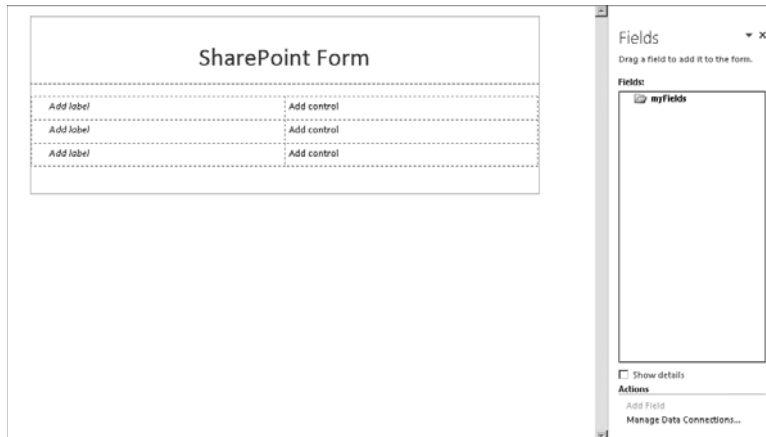


FIGURE 2.2 Entering a title and adding a layout table to a form produces a base form.

Add Controls

Scenario/Problem: You need to add controls to a form for user entry.

Solution: Use the Controls section from the Home top ribbon bar.

To add controls to your form, follow these steps:

1. Click the first Add Control cell in the layout table of the form.
2. From the Home ribbon bar, locate the Controls section, as shown in Figure 2.3, and click Text Box.

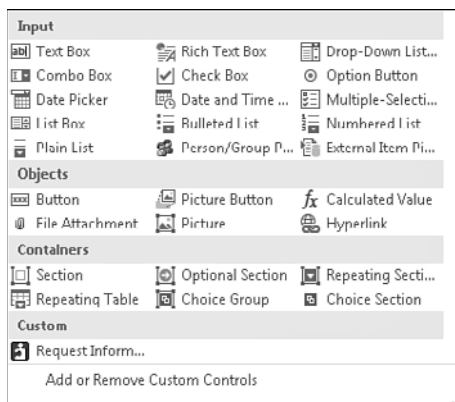


FIGURE 2.3 The Controls section displays the available controls that you can insert onto your form.

3. Click the Add label in the cell to the left of the text box and enter a label for this entry. This tells the user what information to enter into the text box.
4. Repeat these steps for the remaining rows in the layout table. Your form should look similar to Figure 2.4.
5. Click Save from the File menu to save your changes locally.

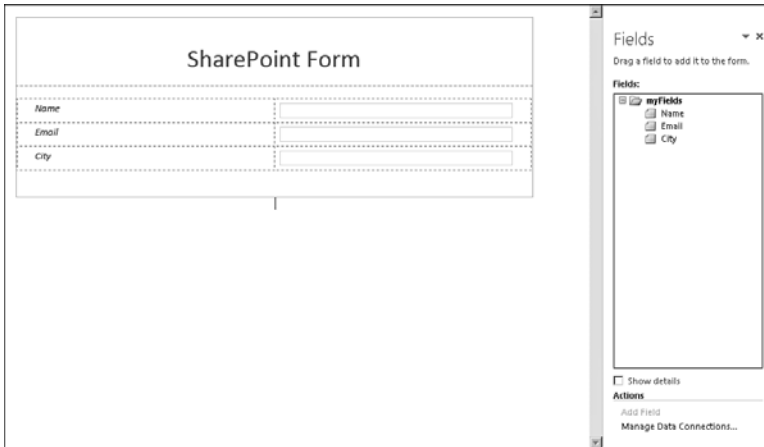


FIGURE 2.4 Adding labels and controls to the form provides the basis for user data entry.

Preview Your Form

Scenario/Problem: You need to see how your form works before you publish it to SharePoint.

Solution: With your form open and saved, there are three ways to preview the contents:

- ▶ Press the F5 key.
- ▶ Click the magnifying glass icon at the very top of the InfoPath Designer application.
- ▶ Click the Preview Form button on the Home ribbon bar.

Your form will render in the InfoPath Filler version of the application, and you can view how it works there, as shown in Figure 2.5.

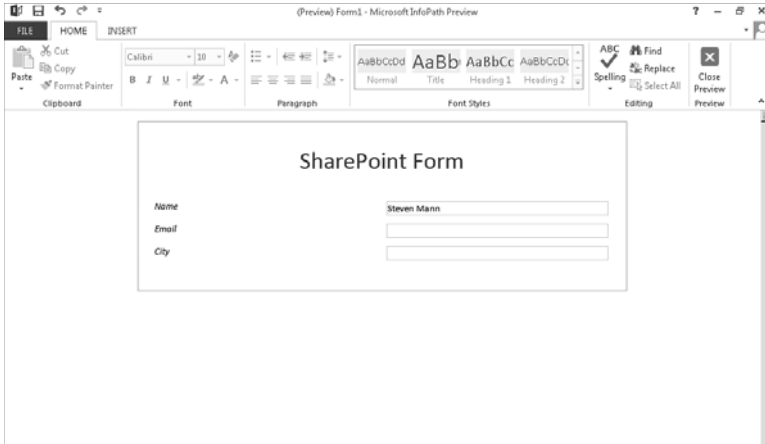


FIGURE 2.5 Previewing your form shows you how the user will experience it.

Name Your Data Fields

Scenario/Problem: You want to give your fields meaningful names. By default, when adding controls to your form, InfoPath names the fields that will store the data generically (that is, Field1, Field2, and so on).

Solution: Change the name of the each field by either right-clicking each control or right-clicking the fields in the Fields pane and selecting Properties. Enter a new name for the field name. Figure 2.6 provides an example.

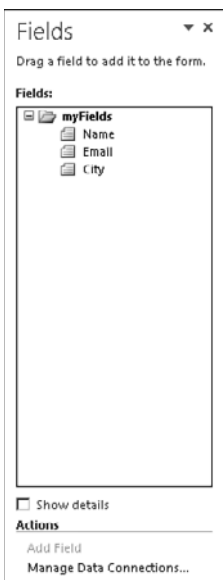


FIGURE 2.6 Naming your fields appropriately makes them easier to identify and manage.

NOTE To be consistent, naming conventions should be established. Developers may use camel case (for example, lastName, firstName), whereas business analysts might use Pascal case (for example, LastName, FirstName). There is no wrong or right answer as long as everyone follows the same standards.

Add Submit Options

Scenario/Problem: You need to enable users to submit the form after they fill it out.

Solution: From the File menu, select Info. On the Info page, click the Submit Form button.

Several options appear (as shown in Figure 2.7):

- ▶ **To Email:** Submitting this form sends the contents in an email to a specified address.
- ▶ **To SharePoint Library:** Submitting this form sends the contents as a saved instance of the form in a SharePoint form library.
- ▶ **To Web Service:** Submitting this form sends the form as XML to a web service.
- ▶ **To SharePoint Server Connection:** Submitting this form uses a specified data connection stored in SharePoint to submit the data.
- ▶ **Submit Options:** If you are familiar with InfoPath 2010 or just want to take control of the submit options, use this item menu to just get down to business.

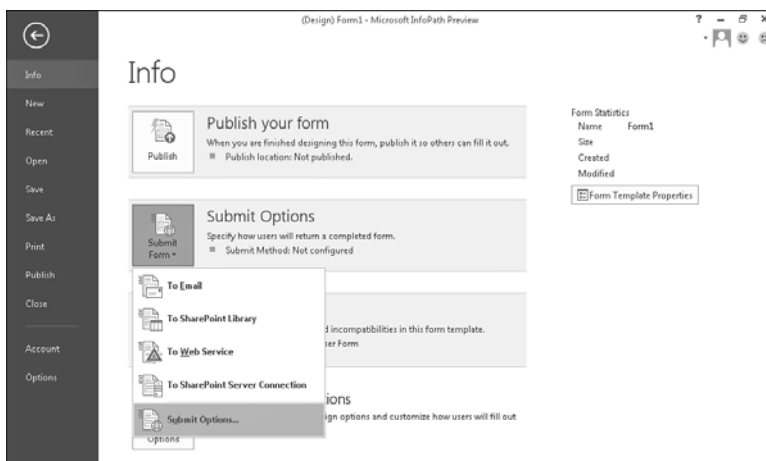


FIGURE 2.7 Submit options determine where and how a completed form will be submitted.

For this scenario, select To SharePoint Library. The Data Connection Wizard appears. For the form to be submitted to that form library, you need to have a data connection to the SharePoint library in the form.

You must specify a form library in SharePoint to submit the form; therefore, you might need to go to your SharePoint site and create a new form library first. Enter the location of the form library in the Document Library text entry. (Create a form library named SharePoint Forms for this example.)

TIP	You can create the form library right from InfoPath, as explained in a later section.
------------	---

Now that some of the grunt work has been done, we come to the most important part of the submission to a document library: the filename. If you notice, by default, the filename is Form. That's great. If you leave it like that, only one person can submit the form, it will be called Form.xsn in the form library, and no one ever can submit the form again. Let's go home!

You need to specify something dynamic or unique about the form instance the user is submitting. This can be tricky. You must define a formula to implement this correctly, and although we haven't stepped through formulas yet, we are forced to do at least one here.

The main ingredients for specifying the filename correctly deal with either entries in the form or entries in the form combined with a system function such as the date.

For this example, we use the name the user entered in the form along with a date function. To do so, follow these steps:

1. Click the Function button to the right of the File Name text box. The Insert Formula dialog appears.
2. Click the Insert Function button and select the concat function. Click OK. The function inserts three spots for you to modify.
3. Double-click the first entry and select the Name field from the field dialog that appears and click OK.
4. Only select the next entry (don't double-click) and replace it with “ – ”, including the quotation marks.
5. Select the last entry and click the Insert Function button. Select Today from the Date category.
6. Click OK.
7. Remove the Double-Click to Insert Field text if it still appears. Click OK. Your formula should now look similar to Figure 2.8.

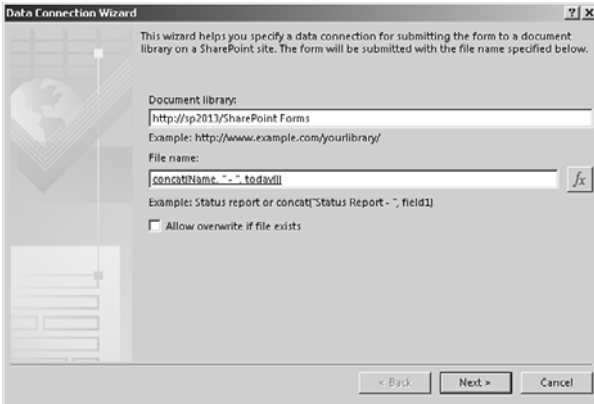


FIGURE 2.8 Using a formula for the filename ensures that each instance is saved to a unique file.

8. Click Next. If you are prompted for credentials, enter them accordingly.
9. Click Finish to save the connection in the form.

TIP If you use the now date function, the time component will be used in the filename, and even if you select to overwrite existing files, the filename will never be the same (because the time changes every second). Avoid this, if possible, because every update generates a new file.

Publish Your Form

Scenario/Problem: You need to publish your form to SharePoint so that users can actually use it.

Solution: From the File menu, select Publish. On the Publish page, click the SharePoint Server button.

Clicking the SharePoint Server button, as shown in Figure 2.9, launches the Publishing Wizard. Follow these steps to publish using the wizard:

1. Enter your SharePoint site address, as shown in Figure 2.10.
2. Click Next. The What Do You Want to Create or Modify? screen appears, as shown in Figure 2.11. Leave the defaults.
3. Click Next. The What Do You Want to Do? screen appears.
4. Select Update the Form Template in an Existing Form Library.

5. Select the existing form library from the list, as shown in Figure 2.12. (To create a new form library see the “Create a Form Library from InfoPath” section later in this chapter.)
6. Click Next. Click Next. Click Publish. The form is published to your SharePoint form library.

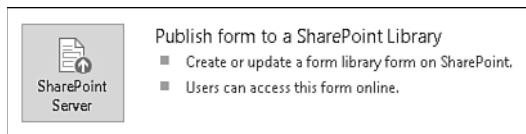


FIGURE 2.9 Clicking SharePoint Server launches the Publishing Wizard.

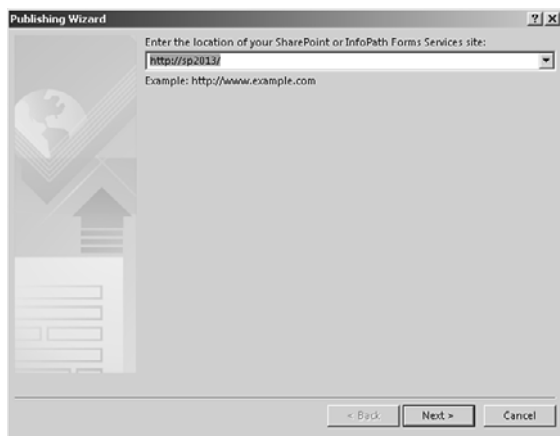


FIGURE 2.10 Enter the location of your SharePoint site.



FIGURE 2.11 Leave the defaults.

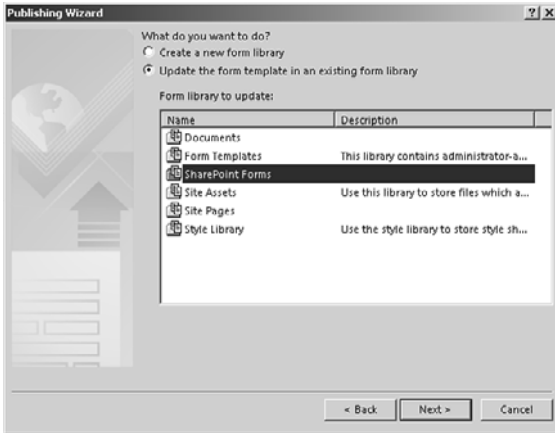


FIGURE 2.12 Select Update the Form Template in an Existing Form Library.

TIP After you have stepped through the publish process once, you can facilitate future republishing of your form by using the Quick Publish button.

Use Your Form in SharePoint

Scenario/Problem: You need to test your published form in SharePoint.

Solution: Navigate to the form library you created in SharePoint and click the Add Document link.

Your form should render in the browser, as shown in Figure 2.13. Enter some values in the text boxes and click the Submit button. An instance of the form is saved to your form library, as shown in Figure 2.14. Notice the filename is using the formula we entered in our submit options.

NOTE When you use certain SharePoint site templates, such as the Blank Site template, the Enterprise features might not be enabled. You need to make sure that Enterprise features are enabled to publish the form as a browser-enabled form.

NOTE The Save and Save As buttons shown here allow the user to save the form using a filename. This circumvents the configured Submit button. Chapter 8, “Submitting and Publishing in SharePoint,” discusses how to change the buttons that appear.

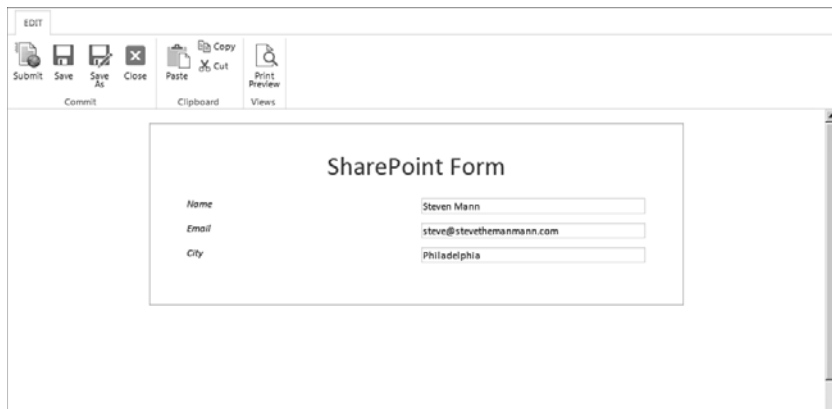


FIGURE 2.13 Clicking the Add Document link opens a new instance of your form within the browser.

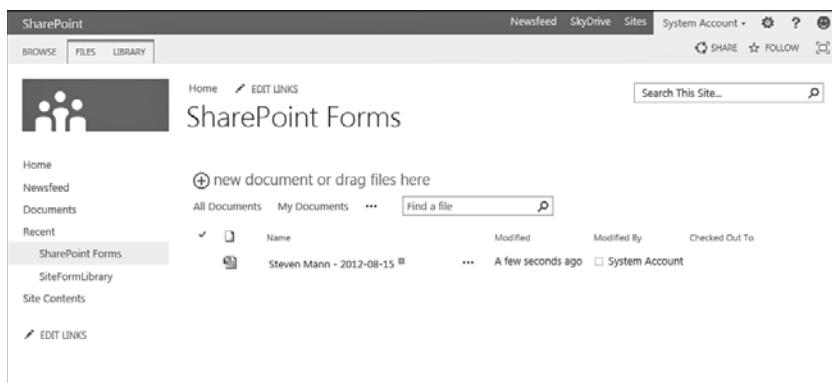


FIGURE 2.14 Submitting the form saves an instance of the form within the form library.

Create a Form Library from InfoPath

Scenario/Problem: You need create a form library to publish and submit the form.

In the preceding section, you created the form library manually. By doing so, you understood where the InfoPath form was going to be published and submitted. When starting from scratch with the Blank Form template, you can use the Publish Form to a SharePoint Library option to create the form library and publish the form, but you also

need to enter submit options after the form has been published. Therefore, you need to publish again after you have entered the submit options. It becomes a chicken-or-the-egg scenario.

Nonetheless, if you create a form using the Blank Form template, you may create the form library to house it using the Publish Form to a SharePoint Library option, as follows:

1. From the File menu, select Publish. On the Publish page, click SharePoint Server (Publish Form to a SharePoint Library). The Publishing Wizard appears.
2. Enter your main SharePoint URL or the full site address where you want the form library created and click Next.
3. Keep the defaults to create a form library and use the form in the web browser. Click Next.
4. Select the Create a New Form Library option, as shown in Figure 2.15, and click Next.

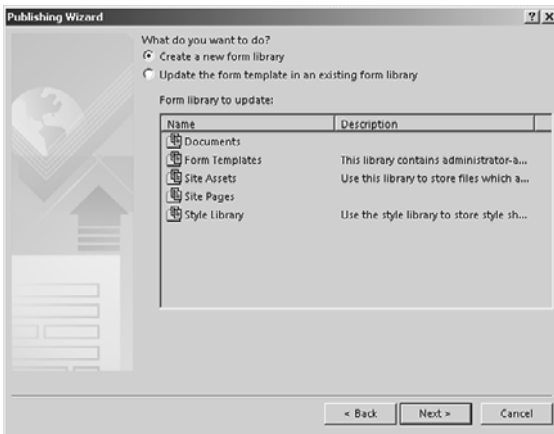


FIGURE 2.15 Selecting the Create a New Form Library option allows you to create the form library from InfoPath.

5. Enter the name of the new form library and a description on the next wizard dialog and click Next.
6. Click Next on the fields selection dialog.
7. Verify the information and click Publish.

Design a SharePoint Form Using the SharePoint Form Library Template

Scenario/Problem: You want to use the SharePoint Form Library template to create a new form for user input in SharePoint.

Solution: From the File menu, select New. On the New page, click the SharePoint Form Library template button, and click the Design Form button.

The SharePoint Form Library template provides you with additional starting points, including two subheadings and tables, as shown in Figure 2.16.

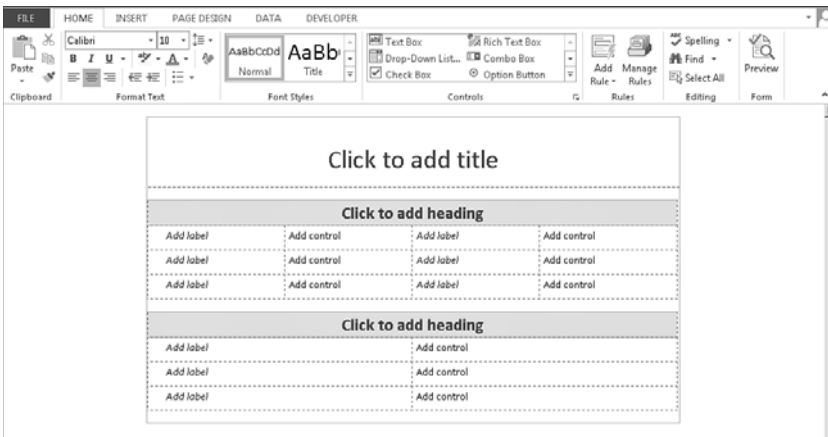


FIGURE 2.16 The SharePoint Form Library template provides more starting material for when you're designing a new form.

TIP The SharePoint Form Library template is a glorified version of the Blank Form template.

So, now you can use this template and apply the same techniques described earlier in this chapter to publish the form to SharePoint. However, you still need to create a form library and configure the submit options.

This page intentionally left blank

Index

A

- accessing data.** See data, accessing
- action rules, adding to buttons, 49-50**
- actions**
 - action rules, adding to buttons, 49-50
 - Assign a To-Do Item, 170-171
 - performing based on form values, 172-175
 - performing either one action or another, 175-177
- activating forms to site collection, 288-289**
- Active Session Duration option, 273**
- ActiveSessionTimeout setting, 286**
- Add a Permission Level link, 296**
- Add Choice dialog, 27**
- Add Custom Control Wizard, 207**
- Add Document link, 17**
- Add Field dialog, 181**
- Add or Change Lookup button, 168**
- Add or Remove Custom Controls dialog, 207**
- Add Rules button, 54**
- Add View dialog, 73**
- addDays() function, 59-60**
- add-ins (InfoPath 3013), creating, 225-226**
- advantages of InfoPath**
 - data integration, 4
 - for lists, 4
 - in workflows, 4
- Allow Embedded SQL Authentication option, 303**
- Allow Overwrite If File Exists check box, 318**
- AllowEmbeddedSqlForDataConnection option, 285**

AllowUdcAuthenticationForDataConnections option, 285

AllowViewState parameter (Set-SPInfoPathFormsService), 287

Approve Request task, creating, 170-171

Assign a To-Do Item action, adding to workflows, 170-171

Association and Initiation Form Parameters dialog, 181

authentication settings, modifying
 in Central Administration, 271-272
 with PowerShell, 285

Authentication to Data Sources option, 271

autogenerating forms, 259-260
 class objects, creating, 260-262
 form generation code, 263-265
 form objects, uploading to form library, 265

auto-incrementing repeating tables, 321
 count() function, 321-322
 counter fields, 322
 position() function, 321

B

benefits of InfoPath

data integration, 4
 for lists, 4
 in workflows, 4

Blank 2010 Form (InfoPath Filler) template, 8

Blank 2010 Form template, 8

blank amounts, defaulting to zero, 64-65

Blank Form button, 9

Blank Form (InfoPath Filler) template, 8

Blank Form template
 designing forms with, 9
 explained, 8

blogs

Microsoft InfoPath Team Blog, 2
 stevethemanmann.com, 2

browser-enabled forms, configuring, 312-313

browser-enabled templates, enabling
 in Central Administration, 269
 via PowerShell, 283

bulleted list control, 23

Business Data Connectivity Metadata Store is currently unavailable (error), 304

Business Data Connectivity Service
 installing, 306
 troubleshooting, 304

button control
 action rules, 49-50
 adding to forms, 35
 explained, 23

buttons. See specific buttons

C

calculated value control, 23

Cannot Be Blank option, 40

cascading drop-down lists, 129-132

Central Administration

authentication settings, modifying, 271-272
 browser-enabled templates, enabling, 269
 data connection response size, configuring, 270
 data connection timeouts, configuring, 269-270
 data connections, managing, 279
 form templates
 managing, 276-277
 uploading, 273-275
 InfoPath Form Services options, accessing, 268
 session state, modifying, 272-273
 web service proxy, enabling, 277-278

Changed Event method

adding for tracking changes, 246-249
 creating, 232
 selection_Changed code listing, 237-239

changes, tracking, 243-244

- Changed Event code, 246-249
- changes counter, 256-257
- formatting rules, 252
- initial setup, 244-245
- navigation controls, 253-255
- rich text, applying, 250-251
- usernames, displaying, 257-258

changes counter, 256-257**changing. See modifying****check box control**

- adding to forms, 30-31
- explained, 22

Check Box Properties dialog, 30**choice group control**

- adding to forms, 38-40
- explained, 24

Choice Section Properties dialog, 39**choice sections control**

- adding to forms, 38-40
- explained, 24

class objects, creating, 260-262**clearing previous entries, 237****client components (Business Data Connectivity Service), installing, 306****Column Settings dialog, 181****columns, adding to DIP (Document Information Panel), 215-217****COM Add-Ins button, 226****combo box control, 22****commands**

- Disable-SPInfoPathFormTemplate, 288-289
- Enable-SPInfoPathFormTemplate, 288-289
- Install-SPInfoPathFormTemplate, 287-288
- Set-SPInfoPathFormsService
 - authentication settings, modifying, 285
 - browser-enabled templates, enabling, 283

- data connection response size, increasing/decreasing, 284-285

- data connection timeouts, increasing/decreasing, 284

- session state, modifying, 286

- view state, enabling, 287

Set-SPInfoPathWebServiceProxy, 290-291**Test-SPInfoPathFormTemplate, 287-288****Uninstall-SPInfoPathFormTemplate, 289****compacting sections of fields/controls, 187****Condition button, 172****Condition dialog, 43, 46, 55, 188****conditions**

- adding to workflows, 172-175
- if-else branch, 175-177

Configure InfoPath Form Service page, 303, 313**Configure the Data Entry Patterns dialog, 55****configuring**

- authentication settings
 - in Central Administration, 271-272
 - with PowerShell, 285

browser-enabled forms, 312-313

- data connection response size
 - in Central Administration, 270
 - with PowerShell, 284-285

data connection timeouts

- in Central Administration, 269-270
- with PowerShell, 284

dynamic sections, 187-189**email submission, 91-93****InfoPath Form web part, 152-154****session state**

- in Central Administration, 272-273
- with PowerShell, 286

SharePoint Server connection submission, 107-109**web service proxy, 277-278****web service submission, 105-107****confirmation views, creating, 190-194**

connecting

- to ECTs (external content types), 142-143
- to REST web services, 144-149
- to SharePoint connection files, 123-124
- to SOAP web services, 124-125
- to SQL Server database, 114-118

connection files, converting InfoPath connections to, 119-120**container controls**

- choice group
 - adding to forms, 38-40
 - explained, 24
- choice sections
 - adding to forms, 38-40
 - explained, 24
- optional section
 - adding to forms, 37
 - explained, 24
- repeating section
 - adding to forms, 37-38
 - explained, 24
- repeating table
 - adding to forms, 37-38
 - explained, 24
- section, 24

content types

- ECTs (external content types), 142-143
- publishing forms as, 101-104

controls

- adding to forms, 10-11
- adding to template parts, 205
- bulleted list, 23
- button
 - adding to forms, 35
 - explained, 23
- calculated value, 23
- check box
 - adding to forms, 30-31
 - explained, 22
- choice group
 - adding to forms, 38-40
 - explained, 24

choice sections

- adding to forms, 38-40
- explained, 24

combo box, 22

compacting sections of, 187

custom controls

- adding template parts as, 206-208
- icons, changing, 211-212
- renaming, 210-211

date and time picker

- adding to forms, 32-33
- explained, 23

date picker, 22

dragging onto forms, 24

drop-down list

- adding to forms, 27-28
- explained, 22

explained, 21-22

external item picker

- adding to forms, 35
- explained, 23

file attachment, 23

hyperlink, 23

list box, 23

making controls required, 40

multiple-selection list box

- adding to forms, 29-30
- explained, 23

numbered list, 23

option button

- adding to forms, 31-32
- explained, 22

optional section

- adding to forms, 37
- explained, 24

person/group picker

- adding to forms, 34
- explained, 23

picture, 23

picture button, 23

plain list, 23

- repeating section
 - adding to forms, 37-38
 - explained, 24
- repeating table
 - adding to forms, 37-38
 - explained, 24
- rich text box, 22
- section, 24
- text box
 - explained, 22
 - multiline text boxes, 26
 - read-only text boxes, 25-26
- using template parts as, 209
- Controls Pane button, 24**
- Controls task pane, 24**
- Convert Existing Form template, 8**
- Convert to Connection File button, 119**
- converting InfoPath connections to SharePoint connection files, 119-120**
- count() function, 67, 321-322**
- counter fields, 322**
- counting items, 67**
- Create List Workflow dialog, 164-166**
- creating**
 - class objects, 260-262
 - confirmation views, 190-194
 - custom permission levels, 296
 - custom task panes, 226-227
 - data connections, 205
 - document library, 214
 - form library, 17-19
 - forms
 - with Blank Form template, 9
 - controls, 10-11
 - fields, 12-13
 - previews, 11
 - publish process, 15-17
 - with SharePoint Form Library template, 20
 - submit options, 13-15
 - InfoPath 3013 add-ins, 225-226
 - lists, 82-85
 - namespace variables, 233-234

- permissions, 293-294
- submit-only permission level, 299-300
- tabbed navigation, 194-198
- template parts, 204
- views, 73
- workflows, 164-168
- Cross-Domain Access option, 271**
- current user, returning, 60-62**
- custom controls**
 - adding template parts as, 206-208
 - icons, changing, 211-212
 - renaming, 210-211
- custom permission levels, creating, 296**
- custom task panes, creating, 226-227**
- Custom Task Wizard, 174**
- customizing task forms, 180**

D

- data, accessing**
 - from ECTs (external content types), 142-143
 - from REST web services, 144-149
 - secondary data sources, 234
 - from SharePoint connection files, 123-124
 - from SharePoint lists, 120-122
 - explained, 133-135
 - repeating tables, 137-142
 - from SOAP web services, 124-125
 - from SQL Server database, 114-118
 - troubleshooting, 302
- Data Connection File template, 8**
- data connection response size, configuring**
 - in Central Administration, 270
 - with PowerShell, 284-285
- data connection timeouts, configuring**
 - in Central Administration, 269-270
 - with PowerShell, 284
- Data Connection Wizard**
 - email connections, configuring, 91
 - lists, creating, 82-83

- REST web services, connecting to, 144-149
- SharePoint connection files, accessing data from, 123-124
- SharePoint library connection, configuring, 96-97
- SharePoint lists, connecting to, 120-122
- SOAP web services, connecting to, 124-125
- SQL Server database, connecting to, 115
- data connections**
 - adding to template parts, 205
 - managing in Central Administration, 279
- data integration, 4**
- data link files, creating, 114-115**
- Data Source Wizard, 218-220**
- data sources**
 - accessing, 302
 - Workflow Variables and Parameters data source, 182
- Database template, 8**
- databases (SQL Server), connecting to, 114-118**
- date and time picker**
 - adding to forms, 32-33
 - explained, 23
- date functions, 59-60**
- date picker, 22**
- dates**
 - adding years to, 70
 - date and time picker
 - adding to forms, 32-33
 - explained, 23
 - date functions, 59-60
 - date picker, 22
 - future dates, calculating, 59-60
- deactivating forms to site collection, 288-289**
- decreasing**
 - data connection response size
 - in Central Administration, 270
 - with PowerShell, 284-285
 - data connection timeouts
 - in Central Administration, 269-270
 - with PowerShell, 284
- default form, setting lists to, 87-88**
- default view, changing, 74**
- deployment, troubleshooting, 311-312**
 - form cannot be browser enabled on selected site, 312-313
 - form template has not been published, 314
 - no file with URL in this web, 311-312
- Design Form button, 9, 218**
- designing forms**
 - with Blank Form template, 9
 - with SharePoint Form Library template, 20
- dialogs. See specific dialogs**
- DIP (Document Information Panel), 213-214**
 - columns, adding, 215-217
 - document library, creating, 214
 - modifying, 218-220
- Disable-SPIInfoPathFormTemplate commands, 288-289**
- DisplayChangesCounter field, 256-257**
- displaying**
 - controls, 42-45
 - data from SharePoint lists, 137-142
 - explained, 133-135
 - repeating tables, 137-142
 - read-only values, 184-186
- Document Information Panel (DIP), 213**
 - columns, adding, 215-217
 - document library, creating, 214
 - modifying, 218-220
 - template, 8
- document library, creating, 214**
- document library already contains a file with the same name (error), 317-319**
- dragging controls onto forms, 24**
- Drop-Down List Box Properties dialog, 27**

drop-down lists

- adding to forms, 27-28
- explained, 22
- populating, 126-132

dynamic sections, configuring, 187-189**E****E-mail template, 8****ECTs (external content types), accessing data from, 142-143****Edit Permissions dialog, 297-298****editing. See modifying****Else-If Branch button, 176****email**

- email submission, configuring forms for, 91-93
- including links to forms in, 168
- publishing forms to, 93-95

Embedded SQL Authentication option, 271**Enable-SPInfoPathFormTemplate command, 288-289****enhancing user experience**

- confirmation views, 190-194
- dynamic sections, 187-189
- four-column table layout, 187
- picture buttons, 198-201
- read-only values, displaying, 184-186
- screen tips, 190
- tabbed navigation, 194-198

entry formatting with rules, 45-46**errors. See troubleshooting****event handlers, SubmitButton_Clicked, 324-325****Export Source Files button, 260****exporting source files, 222, 260****external content types (ECTs), accessing data from, 142-143****external item picker, 23**

- adding to forms, 35
- troubleshooting, 305
- users, getting from people/group picker control, 177-179

F**fields**

- adding to template parts, 205
- compacting sections of, 187
- counter fields, 322
- leading/trailing spaces, removing, 63
- making fields required, 40
- naming, 12-13
- promoting as web part connection parameters, 156
- validation rules
 - explained, 47-48
 - screen tips, 190

file attachments

- explained, 23
- uploading to document library, 323
 - deployment, 325
 - event handler, 324-325
 - form scenario, 323
 - submit button, 323-324

files

- data link files, creating, 114-115
- file attachments, uploading to document library, 323
 - deployment, 325
 - event handler, 324-325
 - form scenario, 323
 - submit button, 323-324
- picture files, adding, 327-328
- SharePoint connection files
 - accessing data from, 123-124
 - converting InfoPath connections to, 119-120
 - source files, exporting, 222, 260

Filter Data button, 257**Filter Data dialog, 130-131****footers, adding to forms, 79****form cannot be browser enabled on selected site (error), 312-313**

form library

- creating, 17-19
- permissions, creating, 293-294
- workflows for, 164-168

form load rules, 53-54**Form Options dialog, 76**

- form fields, promoting as web part connection parameters, 156
- Property Promotion category, 177-179
- Security and Trust category, 309
- Web Browser settings, 110-111

form parameters, adding to workflows, 181-182**Form Services. See InfoPath Form Services****form template has not been published (error), 314****formatting rules**

- entry formatting, 45-46
- hiding/showing controls with, 42-45
- for tracking changes, 252

forms

- accessing within Visual Studio 2012, 222-224
- activating/deactivating to site collection, 288-289
- autogenerating, 259-260
 - class objects, creating, 260-262
 - form generation code, 263-265
 - form objects, uploading to form library, 265
- browser-enabled forms, configuring, 312-313
- controls. See controls
- creating
 - with Blank Form template, 9
 - controls, 10-11
 - fields, 12-13
 - previews, 11
 - publish process, 15-17
 - with SharePoint Form Library template, 20
 - submit options, 13-15

designing, 9

- with Blank Form template, 9
- with SharePoint Form Library template, 20

DIP (Document Information Panel), 213-214

- columns, adding, 215-217
- document library, creating, 214
- modifying, 218-220

dynamic sections, 187-189

emailing links to, 168

explained, 3-4

fields

- compacting sections of, 187
- leading/trailing spaces, removing, 63
- naming, 12-13
- promoting as web part connection parameters, 156
- validation rules, 47-48

form to send data to web parts, 158-160

functions, 57-58

- addDays(), 59-60
- count(), 67, 321-322
- normalize-space(), 63
- nz(), 64-65
- position(), 321
- substring(), 68-70
- substring-after(), 68-69
- substring-before(), 68
- substring-length(), 68
- sum(), 65-66
- today(), 59-60
- translate(), 63-64
- URL functions, 58-59
- userName(), 60-62, 69

InfoPath Form web part, 151-152

- adding to SharePoint web part page, 152-154

- form fields, promoting as web part connection parameters, 156

- master/detail display form, creating, 154-155

- sending data to, 158-160

- layouts
 - headers/footers, 79
 - selecting, 77-78
 - table layouts, 80
 - themes, 78-79
- lists
 - accq, 120-122
 - creating, 82-85
 - displaying data from, 133-142
 - setting to default, 87-88
- loading
 - with rules, 53-54
 - troubleshooting, 308-309
- permissions, 293-294
 - creating on form library, 293-294
 - custom permission levels, 296
 - granting, 295
 - group permissions, editing, 297-298
 - submit-only permission level, creating, 299-300
- picture files, adding, 327-328
- previewing, 11
- publishing, 15-17
 - to email, 93-95
 - to SharePoint libraries, 96-104
 - troubleshooting, 311-314
- quiescing from InfoPath Form Services, 289
- read-only values, displaying, 184-186
- removing from InfoPath Form Services, 289
- rules
 - action rules, 49-50
 - entry formatting, 45-46
 - explained, 41-42
 - form loading, 53-54
 - form submission, 50-52
 - hiding/showing controls with, 42-45
 - pattern-matching conditions, 54-56
 - validation rules, 47-48
- screen tips, 190
- submitting
 - available menu buttons, 110-111
 - email submission, 91-93
 - enabling forms for submission, 90
 - form submit rules, 50-52
 - notifying users of successful submission, 190-194
 - SharePoint library submission, 96-97
 - SharePoint Server connection submission, 107-109
 - submit options, adding to forms, 13-15
 - submit-only permission level, creating, 299-300
 - troubleshooting, 315-319
 - web service submission, 105-107
- tables. *See* tables
- task forms, customizing, 180
- template parts, 203-204
 - controls, adding, 205
 - creating, 204
 - fields, adding, 205
 - saving, 206
- templates, 9
 - Blank 2010 Form, 8
 - Blank 2010 Form (InfoPath Filler), 8
 - Blank Form, 8-9
 - Blank Form (InfoPath Filler), 8
 - browser-enabled templates, 269, 283
 - Convert Existing Form, 8
 - Data Connection File, 8
 - Database, 8
 - Document Information Panel, 8
 - E-mail, 8
 - managing in Central Administration, 276-277
 - SharePoint Form Library, 8, 20
 - SharePoint List, 8, 82-85
 - unpublished templates, 314
 - uploading with Central Administration, 273-275
 - uploading with PowerShell, 288
 - verifying, 287-288
 - Web Service, 8
 - XML or Schema, 8

- testing, 17
 - tracking changes, 243-244
 - Changed Event code, 246-249
 - changes counter, 256-257
 - formatting rules, 252
 - initial setup, 244-245
 - navigation controls, 253-255
 - rich text, applying, 250-251
 - usernames, displaying, 257-258
 - troubleshooting, 301-302
 - Business Data Connectivity Service, 304-306
 - data source access, 302
 - external item picker issues, 305
 - loading errors, 308-309
 - missing programmability components, 308
 - security exception using code-behind, 309
 - SharePoint Designer task list creation error, 307
 - SQL credential issues, 303
 - validating
 - pattern-matching conditions, 54-56
 - validation rules, 47-48
 - views
 - creating, 73
 - default view, changing, 74
 - preventing users from selecting, 75-76
 - printing, 77
 - read-only views, 75
 - renaming, 72
 - four-column table layout, 187**
 - Full Trust security setting, 309**
 - Function button, 173**
 - functions, 57-58**
 - addDays(), 59-60
 - count(), 67, 321-322
 - normalize-space(), 63
 - nz(), 64-65
 - position(), 321
 - substring(), 68-69, 70
 - substring-after(), 68-69
 - substring-before(), 68-69
 - substring-length(), 68
 - sum(), 65-66
 - today(), 59-60
 - translate(), 63-64
 - URL functions, 58-59
 - userName(), 60-62, 69
 - future dates, calculating, 59-60**
- ## G
- Grant Permissions button, 295**
 - granting permissions, 295**
 - group permissions, editing, 297-298**
- ## H
- Header & Footer button, 79**
 - headers, adding to forms, 79**
 - Hide This Control option, 189**
 - hiding controls with rules, 42-45**
 - HTTP Data Connections option, 271**
 - hyperlink control, 23**
- ## I
- icons for custom controls, changing, 211-212**
 - if-else branch, applying to conditions, 175-177**
 - image buttons, 198-201**
 - image files, adding, 327-328**
 - increasing**
 - data connection response size
 - in Central Administration, 270
 - with PowerShell, 284-285
 - data connection timeouts
 - in Central Administration, 269-270
 - with PowerShell, 284
 - InfoPath 3013 add-ins, creating, 225-226**

InfoPath connections, converting to SharePoint connection files, 119-120**InfoPath Designer 2013**

- advantages
 - data integration, 4
 - for lists, 4
 - in workflows, 4
- compared to web parts/web controls, 5
- forms. *See* forms
- installing, 5

InfoPath Form Services

- options, accessing in Central Administration, 268
- quiescing forms from, 289
- removing forms from, 289
- web service proxy, enabling
 - in Central Administration, 277-278
 - with PowerShell, 290-291

InfoPath Form web part, 5, 151-152

- adding to SharePoint web part page, 152-154
- form fields, promoting as web part connection parameters, 156
- master/detail display form, creating, 154-155
- sending data to, 158-160

InfoPath forms. *See* forms**initiation form parameters, adding to workflows, 181-182****input controls**

- bulleted list, 23
- checkbox
 - adding to forms, 30-31
 - explained, 22
- combo box, 22
- date and time picker
 - adding to forms, 32-33
 - explained, 23
- date picker, 22
- drop-down list
 - adding to forms, 27-28
 - explained, 22

external item picker

- adding to forms, 35
- explained, 23

list box, 23

multiple-selection list box

- adding to forms, 29-30
- explained, 23

numbered list, 23

option button

- adding to forms, 31-32
- explained, 22

person/group picker

- adding to forms, 34
- explained, 23

plain list, 23

rich text box, 22

text box

- explained, 22
- multiline text boxes, 26
- read-only text boxes, 25-26

Installation Options dialog, 306**installing**

- Business Data Connectivity Service client components, 306
- InfoPath Designer 2013, 5
- Visual Studio Tools for Applications (VSTA), 308

Install-SPInfoPathFormTemplate command, 287-288**J-K-L****Layout ribbon bar, 80****layouts**

- headers/footers, 79
- selecting, 77-78
- table layouts, 80-79
- themes, 78-79

leading spaces, removing, 63

libraries

- document library, creating, 214
- form library
 - creating, 17-19
 - permissions, creating, 293-294
 - workflows for, 164-168
- SharePoint libraries
 - multiple forms in, 101-104
 - publishing forms to, 96-104
- uploading file attachments to
 - deployment, 325
 - event handler, 324-325
 - form scenario, 323
 - submit button, 323-324
- uploading form objects to, 265

Library Settings, 215**links to forms, emailing, 168****list box control, 23****List URL, 58-59****lists**

- accessing data from, 120-122
- advantages of InfoPath, 4
- bulleted list, 23
- creating, 82-85
- displaying data from
 - explained, 133-135
 - repeating tables, 137-142
- drop-down list
 - adding to forms, 27-28
 - explained, 22
- drop-down lists, populating, 126-132
- list box, 23
- master/detail display form, creating, 154-155
- modifying, 86-87
- multiple-selection list box
 - adding to forms, 29-30
 - explained, 23
- numbered list, 23
- plain list, 23
- setting to default, 87-88
- task lists, troubleshooting, 307

loading forms

- rules, 53-54
- troubleshooting, 308-309

lookup functions, adding to email messages, 168**looping through secondary data source, 235-236****M****Manage Form Templates link, 276****Manage Site dialog, 108****managing**

- data connections, 279
- form templates, 276-277

master/detail display form, creating, 154-155**MaxDataConnectionResponseSize parameter, 284-285****Maximum Size of User Session Data option, 273****MaxPostBacksPerSession setting, 286****MaxSizeOfFormSessionState setting, 286****MaxUserActionsPerPostBack setting, 286****MemoryStream object, 263-265****methods, Changed Event**

- adding for tracking changes, 246-249
- creating, 232
- selection_Changed code listing, 237-239

Microsoft InfoPath Team Blog, 2**Microsoft Office Developer Center, 2****Microsoft Office Visual Studio 2012. See Visual Studio 2012****Microsoft Visual Studio Tools for Applications (VSTA), installing, 308****missing programmability components, troubleshooting, 308****Modify Form Web Parts button, 154****modifying**

- authentication settings with PowerShell, 285
- available menu buttons during form submission, 110-111

DIP (Document Information Panel),
218-220

group permissions, 297-298

icons for custom controls, 211-212

list forms, 86-87

session state

- in Central Administration, 272-273
- with PowerShell, 286

table layouts, 80

multiline text boxes, 26

multiple templates, uploading, 288

multiple-selection list box

adding to forms, 29-30

explained, 23

N

namespace variables, creating, 233-234

naming

fields, 12-13

template parts, 210-211

navigation controls

tabbed navigation, 194-198

for tracking changes, 253-255

nested population loop, 239-242

New Project dialog, 225

New View command, 73

**no file with URL in this web (error),
311-312**

normalize-space() functions, 63

**Number of Actions per Postback option,
272**

**Number of Postbacks per Session setting,
272**

numbered list control, 23

nz() function, 64-65

O

object controls

button

- adding to forms, 35
- explained, 23

calculated value, 23

file attachment, 23

hyperlink, 23

picture, 23

picture button, 23

objects. See also object controls

class objects, creating, 263-265

form objects, uploading to form library,
265

MemoryStream, 263-265

WebClient, 265

XmlTextWriter, 263-265

Option Button Properties dialog, 32

option buttons

adding to forms, 31-32

explained, 22

optional section control

adding to forms, 37

explained, 24

P

Page Layouts & Templates button, 77-78

page views. See views

**pattern-matching conditions, adding to
rules, 54-56**

**people/group picker control, getting users
from, 177-179**

**Perform Custom Actions Using Rules
option, 191**

permissions

creating on form library, 294

custom permission levels, 296

granting, 295

group permissions, editing, 297-298

submit-only permission level, creating,
299-300

person/group picker

adding to forms, 34

explained, 23

pickers. See external item picker

picture button control, 23

Picture Button Properties dialog, 36

picture buttons, 198-201

picture control, 23

picture files, adding, 327-328

plain list, 23

populating drop-down lists, 126-132

populating repeating tables, 229-230

Changed Event method, 232

initial setup, 230-231

namespace variables, 233-234

nested population loop, 239-242

previous entries, clearing, 237

secondary data source

accessing, 234

looping through, 235-236

selection_Changed method code listing, 237-239

XMLWriter, 236-237

position() function, 321

PowerShell, 281-282

authentication settings, modifying, 285

browser-enabled templates, enabling/
disabling, 283

commands

Disable-SPInfoPathFormTemplate,
288-289

Enable-SPInfoPathFormTemplate,
288-289

Install-SPInfoPathFormTemplate,
287-288

Set-SPInfoPathFormsService,
283-287

Set-SPInfoPathWebServiceProxy,
290-291

Test-SPInfoPathFormTemplate,
287-288

Uninstall-SPInfoPathFormTemplate,
289

data connection response size, increasing/
decreasing, 284-285

data connection timeouts, increasing/
decreasing, 284

form templates

uploading, 288

verifying, 287-288

forms

activating/deactivating to site collection,
288-289

quiescing from InfoPath Form
Services, 289

removing from InfoPath Form
Services, 289

session state, modifying, 286

SharePoint 2013 Management Shell,
accessing, 282

view state, enabling, 287

web service proxy, enabling, 290-291

Preview Form button, 11

previewing forms, 11

previous entries, clearing, 237

printing views, 77

problems. See troubleshooting

**promoting fields as web part connection
parameters, 156**

**Property Promotion category (Form
Options), 177-179**

Publish button, 166

publishing forms, 15-17

to email, 93-95

to SharePoint libraries, 96-104

troubleshooting, 311-312

form cannot be browser enabled on
selected site, 312-313

form template has not been
published, 314

no file with URL in this web,
311-312

Publishing Wizard, 15-17, 93-95, 312-313

publishing workflows, 166

Q

Quick Publish button, 17, 219

**quiescing forms from InfoPath Form
Services, 289**

R

- read-only SharePoint locations, troubleshooting, 316
- read-only text boxes, 25-26
- read-only values, displaying, 184-186
- read-only views, 75
- removing
 - forms from InfoPath Form Services, 289
 - leading/trailing spaces, 63
- renaming
 - template parts, 210-211
 - views, 72
- repeating section control
 - adding to forms, 37-38
 - explained, 24
- repeating tables
 - adding to forms, 37-38
 - auto-incrementing, 321
 - count() function, 321-322
 - counter fields, 322
 - position() function, 321
 - displaying from SharePoint lists, 137-142
 - explained, 24
 - populating, 229-230
 - Changed Event method, 232
 - initial setup, 230-231
 - namespace variables, 233-234
 - nested population loop, 239-242
 - previous entries, clearing, 237
 - secondary data sources, 234-236
 - selection_Changed method code listing, 237-239
 - XMLWriter, 236-237
- required controls/fields, setting, 40
- RequireSslForDataConnections option, 285
- resolving problems. *See* troubleshooting
- resource files, adding images as, 327-328
- Resource Files dialog, 327-328
- REST web services, accessing data from, 144-149
- rich text, applying to entries, 250-251
- rich text box control, 22

- RowCount field, 322

- Rule Details dialog, 50-52, 140-141, 158, 192

rules

- action rules, 49-50
- entry formatting, 45-46
- explained, 41-42
- form loading, 53-54
- form submission, 50-52
- hiding/showing controls with, 42-45
- pattern-matching conditions, 54-56
- submit rules, 192
- for tracking changes, 252
- validation rules
 - explained, 47-48
 - screen tips, 190

S

- saving template parts, 206

- screen tips, 190

secondary data source

- accessing, 234
- looping through, 235-236

section control, 24

- Secure Store Service (SSS), 290

- security exception using code-behind, 309

- Select a Field or Group dialog, 43, 131

- selection_Changed method code listing, 237-239

- sending data to web parts, 158-160

- Server Root URL, 58-59

session state, modifying

- in Central Administration, 272-273
- with PowerShell, 286

Set-SPInfoPathFormsService command

- authentication settings, modifying, 285
- browser-enabled templates, enabling, 283
- data connection response size, increasing/decreasing, 284-285
- data connection timeouts, configuring, 284

- session state, modifying, 286
 - view state, enabling, 287
- Set-SPInfoPathWebServiceProxy command, 290-291**
- SharePoint 2013 Central Administration.**
See Central Administration
- SharePoint 2013 Management Shell,**
accessing, 282
- SharePoint connection files**
 - accessing data from, 123-124
 - converting InfoPath connections to, 119-120
- SharePoint Designer workflows.** See workflows
- SharePoint Form Library template, 8, 20**
- SharePoint forms.** See forms
- SharePoint libraries**
 - multiple forms in, 101-104
 - publishing forms to, 96-104
- SharePoint List template, 8, 82-85**
- SharePoint location is read-only (error), 316**
- SharePoint Server connection submission,**
configuring, 107-109
- SharePoint web part pages, adding**
InfoPath Form web part to, 152-154
- SharePoint workflows.** See workflows
- Site Collection URL, 58-59**
- Site URL, 58-59**
- SOAP web services**
 - accessing data from, 124-125
 - SOAP errors, 318-319
- source files, exporting, 222, 260**
- spaces, removing**
 - all spaces, 63-64
 - leading/trailing spaces, 63
- SPDiffUtility, 247-248**
- SQL credential issues, troubleshooting, 303**
- SQL Server database, connecting to,**
114-118
- SSS (Secure Store Service), 290**
- state**
 - session state, modifying
 - in Central Administration, 272-273
 - with PowerShell, 286
 - view state, enabling, 287
- stevethemanmann.com, 2**
- Stop Inheriting Permissions option, 294**
- strings, parsing portion of, 68-69**
- submit button, 323-324**
- Submit Form button, 13**
- submit options**
 - adding to forms, 13-15
 - available menu buttons, 110-111
 - email submission, 91-93
 - enabling forms for submission, 90
 - form submit rules, 50-52
 - SharePoint library submission, 96-97
 - SharePoint Server connection submission, 107-109
 - web service submission, 105-107
- Submit Options dialog, 50**
 - Allow Users to Submit This Form option, 90
 - Data Connection settings, 107-109
 - Document Library settings, 96-97
 - Email settings, 91-93
 - Perform Custom Actions Using Rules option, 191
 - Web Service settings, 105-107
- submit rules, 192**
- submit-only permission level, creating,**
299-300
- submitting forms**
 - available menu buttons, 110-111
 - email submission, 91-93
 - enabling forms for submission, 90
 - form submit rules, 50-52
 - notifying users of successful submission, 190-194
 - SharePoint library submission, 96-97
 - SharePoint Server connection submission, 107-109
 - submit options, adding to forms, 13-15
 - submit-only permission level, creating, 299-300
 - troubleshooting, 315-316
 - document library already contains a file with the same name, 317-318
 - errors submitting to a web service, 318-319

- general submission issues, 316
- SharePoint location is read-only, 316
- web service submission, 105-107
- substring() function, 68-70**
- substring-after() function, 68-69**
- substring-before() function, 68**
- substring-length() functions, 68**
- sum() function, 65-66**
- sums, calculating, 65-66**

T

- tabbed navigation, 194-198**
- tables, 187**
 - layouts
 - adding to forms, 79-80
 - four-column table layout, 187
 - modifying, 80
 - repeating tables
 - adding to forms, 37-38
 - auto-incrementing, 321-322
 - displaying from SharePoint lists, 137-142
 - explained, 24
 - populating. See populating repeating tables
- task forms, customizing, 180**
- task lists, troubleshooting, 307**
- task panes, customizing, 226-227**
- tasks, adding to workflows, 170-171**
- Template Part Properties dialog, 210-211**
- template parts, 203-204**
 - adding as custom control, 206-208
 - controls, adding, 205
 - creating, 204
 - data connections, adding, 205
 - fields, adding, 205
 - icons, changing, 211-212
 - renaming, 210-211
 - saving, 206
 - using as control, 209
- templates**
 - Blank 2010 Form, 8
 - Blank 2010 Form (InfoPath Filler), 8
 - Blank Form
 - designing forms with, 9
 - explained, 8
 - Blank Form (InfoPath Filler), 8
 - browser-enabled templates
 - enabling in Central Administration, 269
 - enabling via PowerShell, 283
 - Convert Existing Form, 8
 - Data Connection File, 8
 - Database, 8
 - Document Information Panel, 8
 - E-mail, 8
 - managing in Central Administration, 276-277
 - SharePoint Form Library, 8
 - SharePoint Form Library template, creating forms with, 20
 - SharePoint List, 8, 82-85
 - template parts, 203-204
 - adding as custom control, 206-208
 - controls, adding, 205
 - creating, 204
 - data connections, adding, 205
 - fields, adding, 205
 - icons, changing, 211-212
 - renaming, 210-211
 - saving, 206
 - using as control, 209
 - unpublished templates, 314
 - uploading
 - with Central Administration, 273-275
 - with PowerShell, 288
 - verifying, 287-288
 - Web Service, 8
 - XML or Schema, 8
- testing forms, 17**
- Test-SPIInfoPathFormTemplate command, 287-288**

text boxes, 22

- multiline text boxes, 26
- read-only text boxes, 25-26

themes, selecting, 78-79**today() function, 59-60****tracking changes, 243-244**

- Changed Event code, 246-249
- changes counter, 256-257
- formatting rules, 252
- initial setup, 244-245
- navigation controls, 253-255
- rich text, applying, 250-251
- usernames, displaying, 257-258

trailing spaces, removing, 63**translate() function, 63-64****troubleshooting**

- deployment, 311-312
- form submission, 315-316
 - document library already contains a file with the same name, 317-318
 - errors submitting to a web service, 318-319
 - general submission issues, 316
 - SharePoint location is read-only, 316
- forms, 301-302
 - Business Data Connectivity Service, 304-306
 - data source access, 302
 - external item picker issues, 305
 - loading errors, 308-309
 - missing programmability components, 308
 - security exception using code-behind, 309
 - SharePoint Designer task list creation error, 307
 - SQL credential issues, 303
- publishing, 311-312
 - form cannot be browser enabled on selected site, 312-313
 - form template has not been published, 314
 - no file with URL in this web, 311-312

U**Uninstall-SPIInfoPathFormTemplate command, 289****uploading**

- file attachments to document library, 323
 - deployment, 325
 - event handler, 324-325
 - form scenario, 323
 - submit button, 323-324
- form objects to form library, 265
- form templates
 - with Central Administration, 273-275
 - with PowerShell, 288

URL functions, 58-59**Use the Default SharePoint Form option, 87-88****user experience enhancements**

- confirmation views, 190-194
- dynamic sections, 187-189
- four-column table layout, 187
- picture buttons, 198-201
- read-only values, displaying, 184-186
- screen tips, 190
- tabbed navigation, 194-198

userName() function, 60-62, 69**usernames, obtaining, 69****users**

- current user, returning, 60-62
- getting from people/group picker control, 177-179
- granting permissions to, 295
- notifying of successful submission, 190-194
- user experience enhancements
 - confirmation views, 190-194
 - dynamic sections, 187-189
 - four-column table layout, 187
 - picture buttons, 198-201
 - read-only values, displaying, 184-186
 - screen tips, 190
 - tabbed navigation, 194-198

- usernames
 - displaying when tracking changes, 257-258
 - obtaining, 69

utilities

- SPDiffUtility, 247-248
- xsd, 223-224, 261-262

V

validating forms

- pattern-matching conditions, 54-56
- validation rules, 47-48
 - explained, 47-48
 - screen tips, 190

variables, namespace variables, 233-234

verifying form templates, 287-288

View Properties dialog

- Designate Print View section, 77
- Read-Only check box, 75
- Set as Default View check box, 74
- Show on View Menu When Filling Out This Form option, 75-76
- view name, 72

view state, enabling, 287

views

- confirmation views, creating, 190-194
- creating, 73
- default view, changing, 74
- preventing users from selecting, 75-76
- printing, 77
- read-only views, 75
- renaming, 72

Visual Studio 2012, 221-222

- accessing forms within, 222-224
- custom task panes, creating, 226-227
- InfoPath 3013 add-ins, creating, 225-226
- VSTA (Visual Studio 2012 Tools for Applications), 232

Visual Studio Tools for Applications (VSTA), 308

VSTA (Visual Studio 2012 Tools for Applications), 232

VSTA (Visual Studio Tools for Applications), 308

W

web controls, compared to InfoPath, 5

web parts

- compared to InfoPath, 5
- InfoPath Form web part, 5, 151-152
 - adding to SharePoint web part page, 152-154
 - form fields, promoting as web part connection parameters, 156
 - master/detail display form, creating, 154-155
 - sending data to, 158-160

web service proxy, enabling

- in Central Administration, 277-278
- with PowerShell, 290-291

Web Service template, 8

web services

- REST web services, connecting to, 144-149
- SOAP web services
 - connecting to, 124-125
 - form submission errors, 318-319
- web service submission, configuring, 105-107

WebClient object, 265

wizards

- Add Custom Control Wizard, 207
- Custom Task Wizard, 174
- Data Connection Wizard
 - email connections, configuring, 91
 - lists, creating, 82-83
 - REST web services, connecting to, 144-149
 - SharePoint connection files, accessing data from, 123-124
 - SharePoint library connection, configuring, 96-97

SharePoint lists, connecting to,
120-122

SOAP web services, connecting to,
124-125

SQL Server database, connecting to,
115-118

Data Source Wizard, 218-220

Publishing Wizard, 15-17, 93-95,
312-313

**Workflow Variables and Parameters data
source, 182**

workflows, 163-164

actions

Assign a To-Do Item, 170-171

performing based on form values,
172-175

performing either one action or
another, 175-177

advantages of InfoPath, 4

creating, 164-168

form parameters, adding, 181-182

links to forms, emailing, 168

publishing, 166

task forms, customizing, 180

tasks, adding, 170-171

users, getting from people/group picker
control, 177-179

X-Y-Z

XML or Schema template, 8

XmlTextWriter object, 263-265

XMLWriter, 236-237

xsd utility, 223-224, 261-262

years, adding to dates, 70

zero, defaulting blank amounts to, 64-65