



Infor XA Client Runtime Update Administration Guide

Update for Corretto

Copyright © 2019 Infor

Important Notices

The material contained in this publication (including any supplementary information) constitutes and contains confidential and proprietary information of Infor.

By gaining access to the attached, you acknowledge and agree that the material (including any modification, translation or adaptation of the material) and all copyright, trade secrets and all other right, title and interest therein, are the sole property of Infor and that you shall not gain right, title or interest in the material (including any modification, translation or adaptation of the material) by virtue of your review thereof other than the non-exclusive right to use the material solely in connection with and the furtherance of your license and use of software made available to your company from Infor pursuant to a separate agreement, the terms of which separate agreement shall govern your use of this material and all supplemental related materials ("Purpose").

In addition, by accessing the enclosed material, you acknowledge and agree that you are required to maintain such material in strict confidence and that your use of such material is limited to the Purpose described above. Although Infor has taken due care to ensure that the material included in this publication is accurate and complete, Infor cannot warrant that the information contained in this publication is complete, does not contain typographical or other errors, or will meet your specific requirements. As such, Infor does not assume and hereby disclaims all liability, consequential or otherwise, for any loss or damage to any person or entity which is caused by or relates to errors or omissions in this publication (including any supplementary information), whether such errors or omissions result from negligence, accident or any other cause.

Without limitation, U.S. export control laws and other applicable export and import laws govern your use of this material and you will neither export or re-export, directly or indirectly, this material nor any related materials or supplemental information in violation of such laws, or use such materials for any purpose prohibited by such laws.

Trademark Acknowledgements

The word and design marks set forth herein are trademarks and/or registered trademarks of Infor and/or related affiliates and subsidiaries. All rights reserved. All other company, product, trade or service names referenced may be registered trademarks or trademarks of their respective owners.

Publication Information

Release: Infor XA

Publication date: October 22, 2019

Contents

| | |
|--|----------|
| About this guide | 5 |
| Intended audience | 5 |
| Related documents..... | 5 |
| Contacting Infor..... | 5 |
| Chapter 1 Overview | 6 |
| Chapter 2 Prerequisites | 7 |
| Apply prerequisite PTF to the global environment..... | 8 |
| Verify your permissions to the install folder on your PC | 8 |
| Chapter 3 Process to upgrade | 9 |
| Reinstall one instance of Link Manager | 10 |
| Reinstall Auxiliary Machines..... | 11 |
| Verify Host Java Version | 16 |
| Set Host Process to Use Java SE 8 or above | 18 |
| Verify the managing system of your Link Manager..... | 20 |
| Apply the client fix pack..... | 22 |
| Apply the Java client runtime component fix pack..... | 25 |
| Set the Client Runtime of the Global Environment | 26 |
| Make the Client Runtime available for download..... | 28 |
| Set the Runtime for use..... | 30 |
| Business environments | 32 |

About this guide

This document provides step by step instructions for upgrading your global environment, your business environments, and the IDF client from Oracle 6 Java to Amazon Corretto 8 Java.

Intended audience

This guide is intended for the system administrator or consultant who installs or updates Infor XA client applications.

Related documents

You can find the information in these KB articles:

- KB 2062695
- KB 1010103

Contacting Infor

If you have questions about Infor products, go to Infor Concierge at <https://concierge.infor.com/> and create a support incident.

If we update this document after the product release, we will post the new version on the Infor Support Portal. To access documentation, select **Search > Browse Documentation**. We recommend that you check this portal periodically for updated documentation.

If you have comments about Infor documentation, contact documentation@infor.com.

Chapter 1 Overview

Oracle introduced support charges for customers using the latest versions of Java (JRE and JDK) platforms. As a result, Infor is standardizing on Amazon's Corretto Java platform. Infor internal development and support environments are upgrading to and adopting Amazon Corretto, replacing Oracle's platform.

This strategy offers customers a strong Java platform for the future, as well as reduces the costs by avoiding any support fees involved with using Java.

KB 2062695 includes the latest information about each affected product including a link to the upgrade instructions.

Chapter 2 Prerequisites

To upgrade to Corretto, you must download these files:

- PTFs

A PTF must be applied to the global environment on your IBM i. The required PTF can be determined based on the release of XA that you are running (9.1 or 9.2) and whether your system is SBCS or DBCS. The available PTFs are:

 - 9.1 SBCS SH66333690
 - 9.2 SBCS SH66333692
 - 9.1 DBCS SH66540690
 - 9.2 DBCS SH66540692
- Link Manager Installer (See [KB 2065923](#))

This installer allows you install the Link Manager client with an embedded (default) Corretto 8 Java Runtime.
- Auxiliary Machine Installer (See [KB 2065923](#))

This installer allows the installation of the Link Manager client with an embedded (default) Corretto 8 Java Runtime.
- Client Fixes:

Release **9.1 SH16195.690** (See **KB 2066018 – SH16195**)
or
Release **9.2 SH16194.692** (See **KB 2066014 - SH16194**)
Follow the standard client fix apply process when prompted:

 - Download the client fix to the /QDLS/AFDWEB/ folder
 - Run AFDWEBGET to extract the file to /QGPL
 - Run the restore command from the cover letter to bring the client file over to /infor/fixes

System enhancements allowing the IDF system to configure the Java Runtime used by Client Processes. Check the release level of your global environment to download the required release of the client fix.
- Java Client Runtime Component: **JavaFix-JRE-01.08.00.02.02.02.dat** (See [KB 2066020](#))

This file contains the Corretto 8 Java Runtime files that are distributed to clients across your network.

Note: You must save these files on the system only when instructed.

Apply prerequisite PTF to the global environment

You need to apply one of these downloaded PTFs:

- 9.1 SBCS SH66333690
- 9.2 SBCS SH66333692
- 9.1 DBCS SH66540690
- 9.2 DBCS SH66540692

Note: To apply the PTF, follow the instructions in the cover letter.

Verify your permissions to the install folder on your PC

For the non-server desktops where the user is not a local administrator or for most server operating systems, you must first create the **C:\Infor** (or the directory where you intend to install) folder. Then you must update the permissions so that the folder has the Modify, Read, Write permissions for all users, The Everyone Group, and The Authenticated Users Group. See [KB 794858](#) for more information.

Chapter 3 Process to upgrade

To upgrade to Corretto, you must execute these steps:

- 1 Reinstall one instance of Link Manager
- 2 Reinstall Auxiliary Machines
- 3 Set host processes to use Java SE 8 or above
- 4 Verify the managing system of your Link Manager
- 5 Apply the client fix pack
- 6 Apply the Java client runtime component fix pack
- 7 Set the Client Runtime of the Global Environment
- 8 Make the Client Runtime available for download
- 9 Set the runtime for use

Reinstall one instance of Link Manager

This fix pack involves moving to a new version of Java. First, you must download and then update Link Manager on the workstation from where you can upgrade the server's Global environment. An existing instance of Link Manager, which runs Oracle Java 1.6, cannot support Java code compiled for a newer version and therefore, cannot be used to perform the update.

To reinstall a new instance of Link Manager:

- 1 Download and launch the new Link Manager installer from [KB 2065923](#).
- 2 Rename the file so the characters after '_H' correspond to the fully qualified name of your IBM i.
- 3 Retain '_P36001.exe' part of the name.

For example, if the server name is AS400.CDOMAIN.LOCAL, the downloaded xaadmin_HISERIES.MYDOMAIN.COM_P36001.exe file name must be renamed to xaadmin_HAS400.CDOMAIN.LOCAL_P36001.exe.

Renaming the file name allows the installer to default the host name correctly during the installation process.

Note: It is suggested to change the default installation directory to be different than an existing folder that might already have LinkManager installed.

For example: C:\InforC\ERP XA Client

This ensures that all the 'Corretto' version of the programs used by this special version are installed.

- 4 You can use this special directory for each LPAR / Host upgrade to Corretto as long as you modify the contents of the C:\InforC\ERP XA Client\Console.properties file to have the new system name in the Managing system specification. See the below section:
Verify your permissions to the install folder on your PC
- 5 You can delete this folder and continue using your existing LinkManager client installations after you have completed updating all your LPAR / Hosts to Corretto.

Note: Only an administrator must perform this process. The Link Manager and the Power-Link client applications for other users are automatically updated after this process is completed.

After the installation has completed, run Link Manager and select the **Help > About** option to verify that the new version of Java is being used. Ensure that Amazon is displayed (and not Sun or Oracle) in the Java Runtime Environment field:



Note: If LinkManager displays the below screen, this indicates that the installer did not successfully install all of the required Corretto versions of the LinkManager client. It is suggested to install in a separate folder as described above. Also, ensure that C:\InforC\ folder has 'modify' security rights.

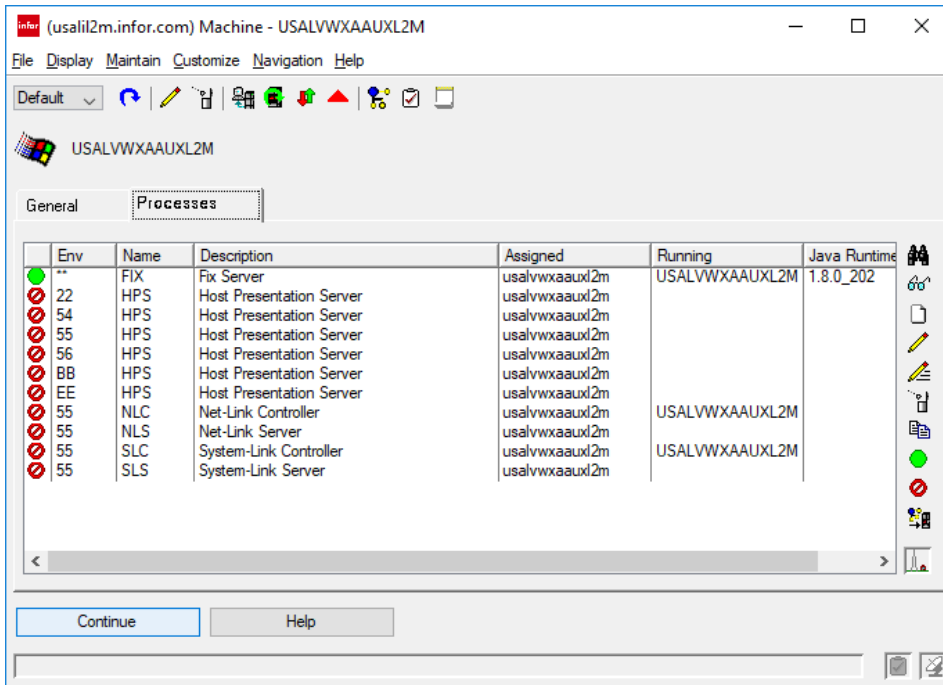


Reinstall Auxiliary Machines

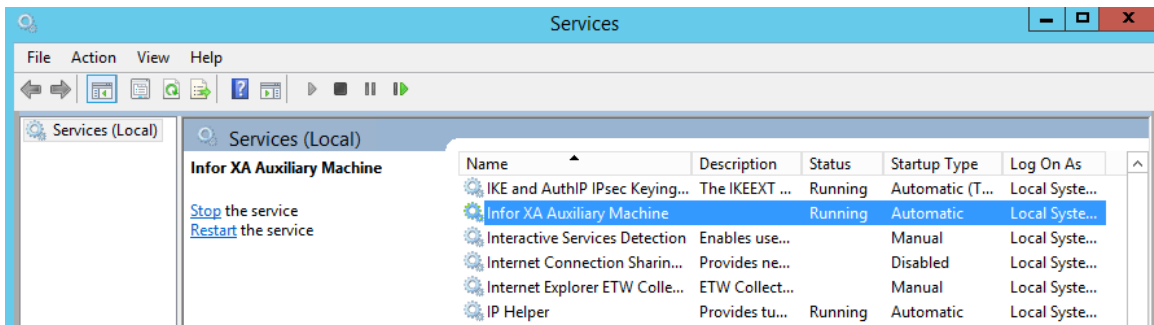
If you use auxiliary machines, these machines must be reinstalled. The new installer can be downloaded from [KB 2065923](#). The installation procedure is the same. However, ensure that the installer is run on the auxiliary machine only and not on a client workstation.

To reinstall Auxiliary Machines

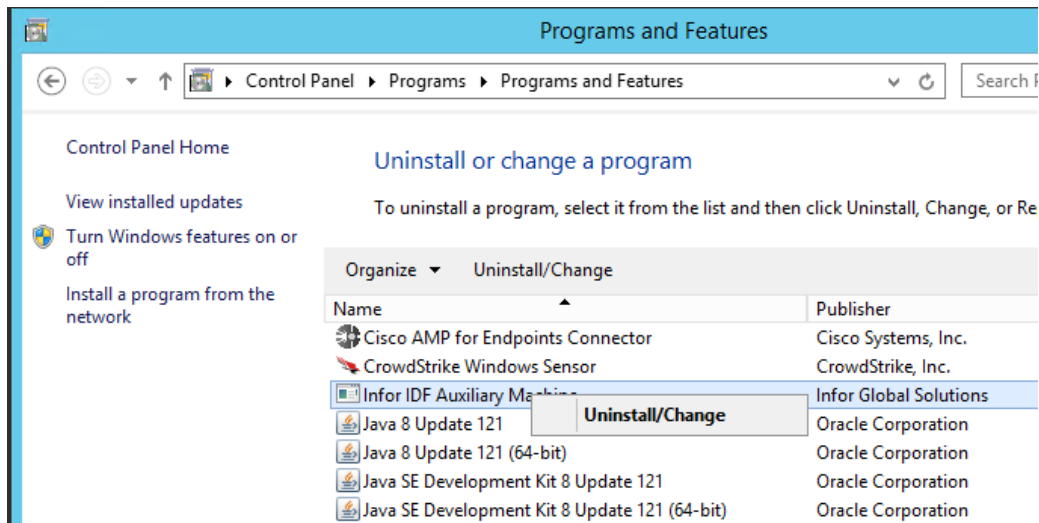
- 1 Use Link-Manager to stop all processes running on the auxiliary machine.



- 2 Log on to the machine hosting the auxiliary server.
- 3 Stop the Infor XA Auxiliary Machine on the Windows Services panel.

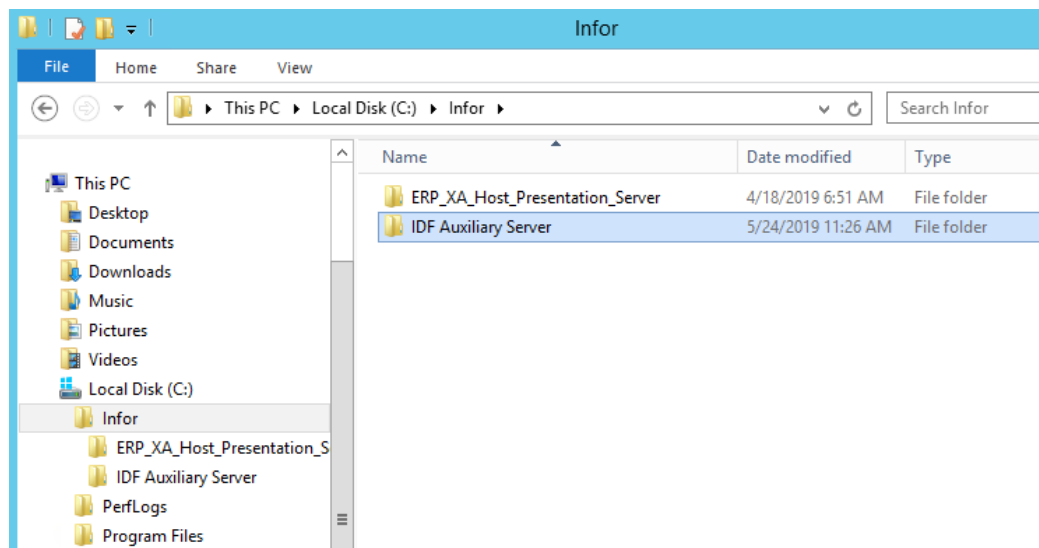


- 4 From the Control Panel of the machine hosting the auxiliary server, uninstall Infor XA Auxiliary Machine.



Notes:

- You can ignore messages indicating some directories are not removed.
 - Return to the Windows Services panel and confirm that the auxiliary machine service has been removed. If necessary, wait a few minutes.
- 5 Delete previous Auxiliary Machine folder. The exact name of the folders may vary. You must delete the folder associated with the Auxiliary Server:

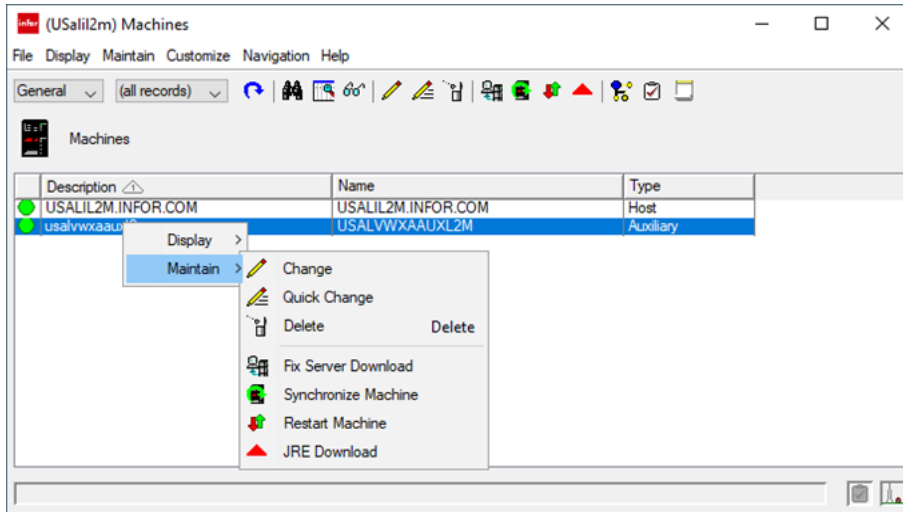


Note: Do not delete the Host Presentation Server folder.

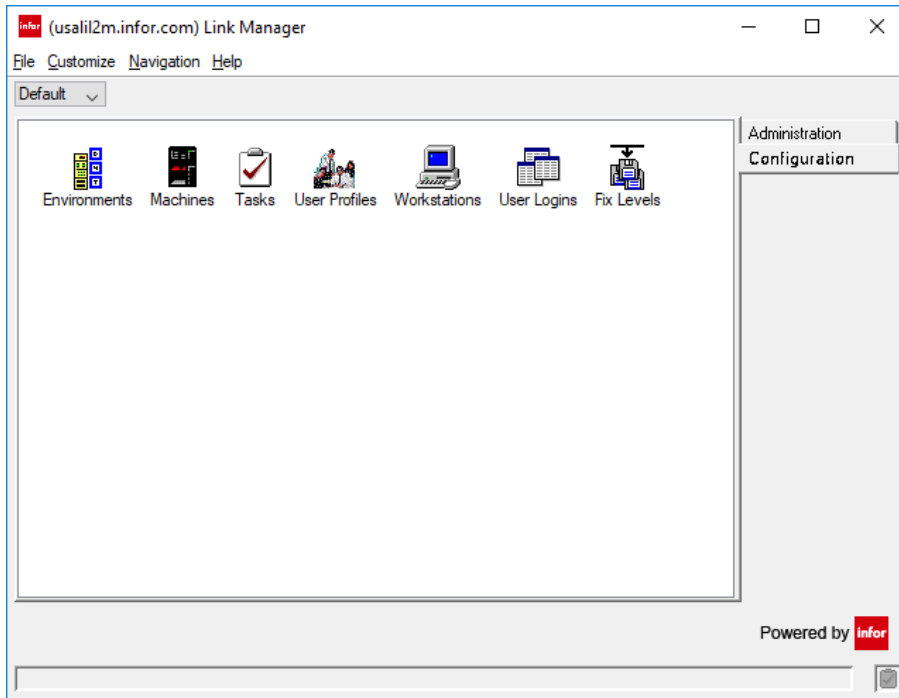
- 6 Reinstall the Corretto version of the auxiliary machine using the installer downloaded from [KB 2065923](#).

Note: Follow the instructions in the KB to rename the downloaded file.

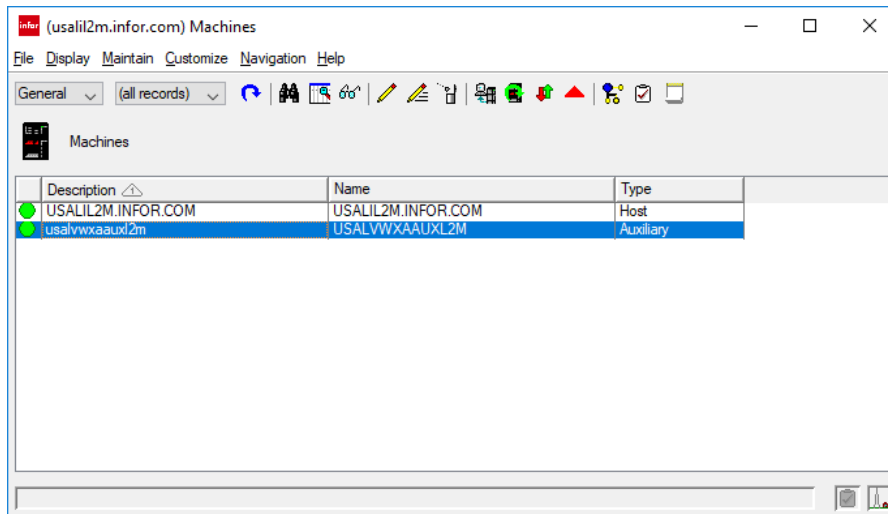
- 7 Log on to Link Manager and Synchronize Global environment when the installation completes.



- 8 Verify that the auxiliary machine is running with the new JRE by viewing the log.
 - a Double-click the Machines object on the **Configuration** card of Link Manager.

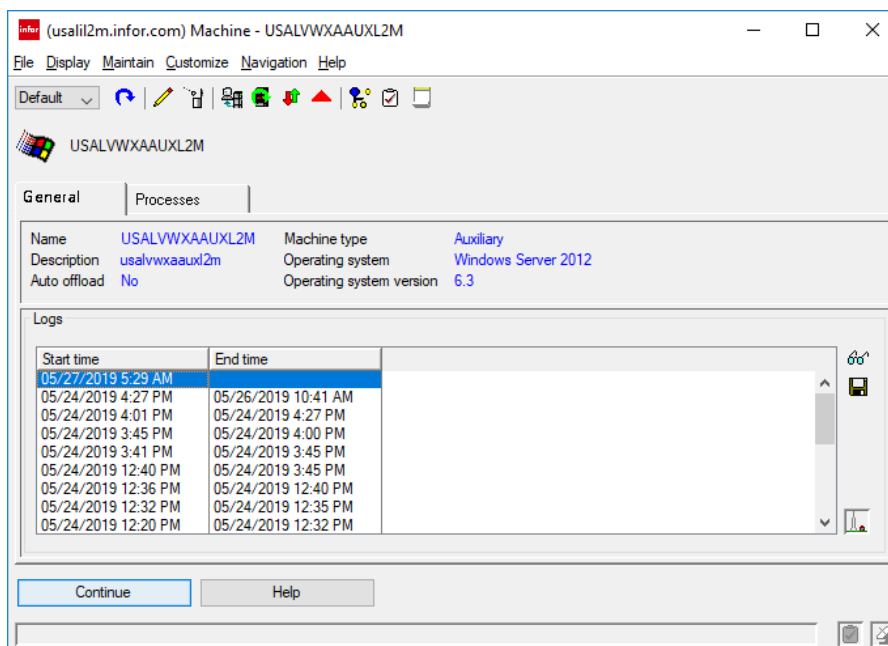


The **Machines** card is displayed:



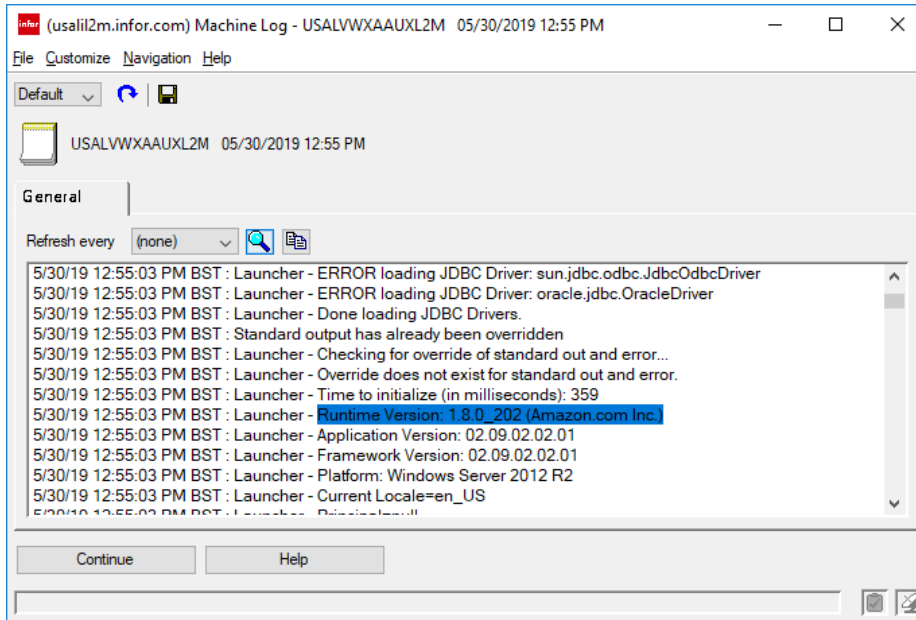
- b Double-click the appropriate machine. The machine details are displayed.
- c Ensure that **Auto offload** is set to **No**. You can click **Edit** and change the value to **No** if the option is set to **Yes**.

In the machine details card, you can view a list of available log files. The latest log is displayed at the top and the **End Time** is not displayed if the log is still in progress.



- d Double-click the latest log to view the log details.
- e Locate the **Runtime Version** in the list and ensure that Amazon is displayed instead of Sun or Oracle.

Note: You can scroll the list or use the search option. The search is case-sensitive.



Verify Host Java Version

First, verify that a compatible version of Java is available on your IBM i server:

- 1 Log on as a user with the appropriate authority.
- 2 Execute this command:
DSPSFWRSC
- 3 Press the Page Down key to find the entries for the **Resource ID** in the **nnnnJV1** format.
Note: **nnnn** is a four digit number which can vary based on your IBM operating system release. The entries are alphabetical except that the SS1 options, which are the operating system itself, are forced to the top. It is possible that the JV1 (Java) entries are split across pages.
- 4 Ensure that an SE 8 entry is available.
Locate a line with Java SE 8 64 bit. If that is not found, look for Java SE 8 32 bit.


```

A - L2M US
File Edit View Communication Actions Window Help
Display Software Resources System: USALIL2M

Resource ID Option Feature Description
5770BR1 *BASE 5050 Backup Recovery and Media Services for IBM i
5770BR1 *BASE 2924 Backup Recovery and Media Services for IBM i
5770BR1 1 5101 BRMS-Network Feature
5770BR1 2 5102 BRMS-Advanced Functions Feature
5770DG1 *BASE 5050 IBM HTTP Server for i
5770DG1 *BASE 2924 IBM HTTP Server for i
5770JS1 *BASE 5050 IBM Advanced Job Scheduler for i
5770JS1 *BASE 2924 IBM Advanced Job Scheduler for i
5770JV1 *BASE 5050 IBM Developer Kit for Java
5770JV1 *BASE 2924 IBM Developer Kit for Java
5770JV1 14 5114 Java SE 7 32 bit
5770JV1 15 5115 Java SE 7 64 bit
5770JV1 16 5116 Java SE 8 32 bit
5770JV1 17 5117 Java SE 8 64 bit

Press Enter to continue. More...

F3=Exit F11=Display libraries/releases F12=Cancel
F19=Display trademarks

MA A MW 01/001
  
```

Note: If a SE 8 or higher version is not available, contact Infor Support for advice. The IBM operating system release that you are using can be outdated or you may require to install additional options. To verify the operating system release, press the Page Up key to navigate to the top of the list and press F11. If installing a new java option, you must also apply the java group PTF as that is based on the java options installed. An IPL may be needed to complete this install.

```

A - L2M US
File Edit View Communication Actions Window Help
Display Software Resources System: USALIL2M

Resource ID Option Feature Feature Type Library Release
5770999 *BASE 5050 *CODE QSYS V7R3M0 L00
5770SS1 *BASE 5050 *CODE QSYS V7R3M0 L00
5770SS1 *BASE 2924 *LNG QSYS V7R3M0 L00
5770SS1 1 5050 *CODE QSYS2 V7R3M0
5770SS1 1 2924 *LNG QSYS2 V7R3M0
5770SS1 2 5050 *CODE QHLP SYS V7R3M0
5770SS1 2 2924 *LNG QHLP SYS V7R3M0
5770SS1 3 5050 *CODE QSYS DIR V7R3M0
5770SS1 3 2924 *LNG QSYS DIR V7R3M0
5770SS1 9 5050 *CODE QSYSV7R2M0 V7R3M0
5770SS1 12 5050 *CODE QIWS V7R3M0
5770SS1 12 2924 *LNG QIWS V7R3M0
5770SS1 13 5050 *CODE QSYSINC V7R3M0
5770SS1 18 5103 *CODE QMSE V7R3M0

Press Enter to continue. More...

F3=Exit F11=Display descriptions F12=Cancel F19=Display trademarks

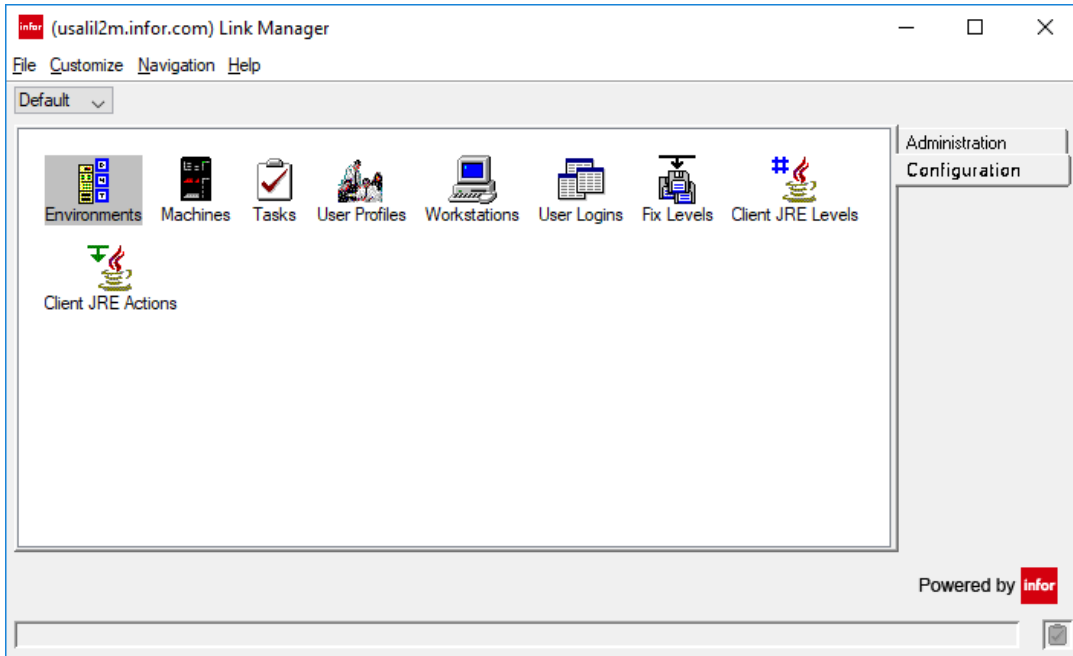
Already at top of area.

MA A MW 01/001
  
```

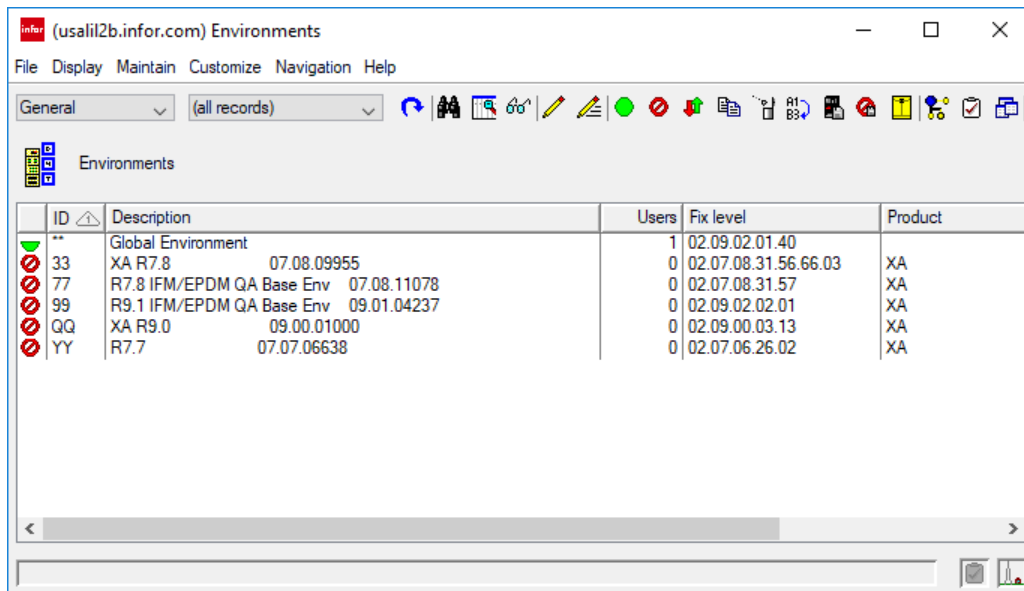
Set Host Process to Use Java SE 8 or above

To set the Host Process to use Java SE 8 or above:

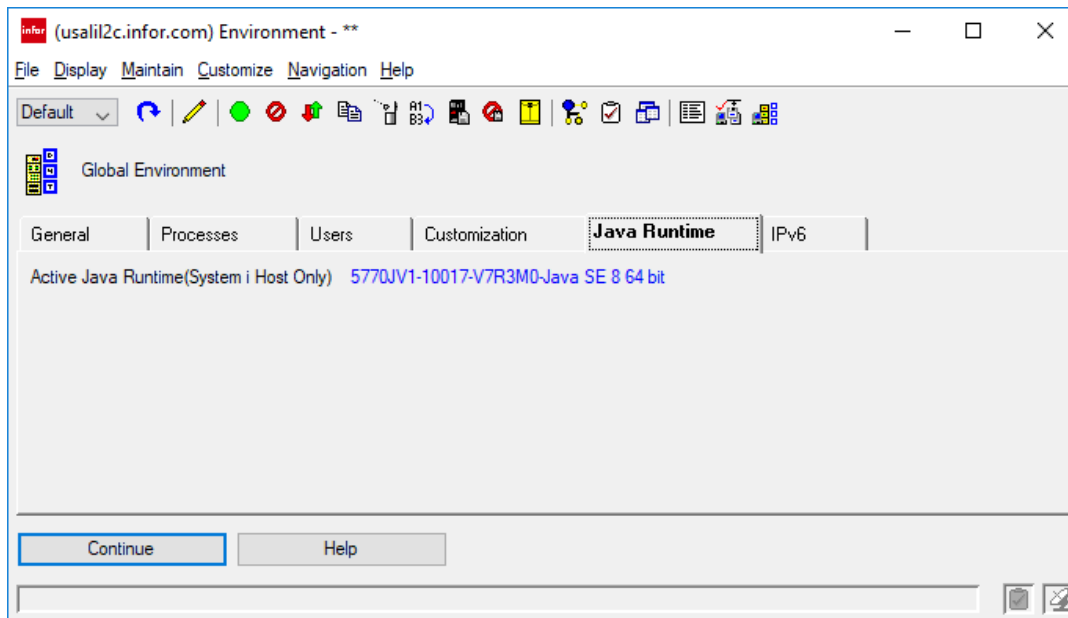
- 1 In Link Manager, open the Environments object on the **Configuration** card.



The **Environments** list card is displayed:



- 2 Double-click Global Environment and select the **Java Runtime** tab.

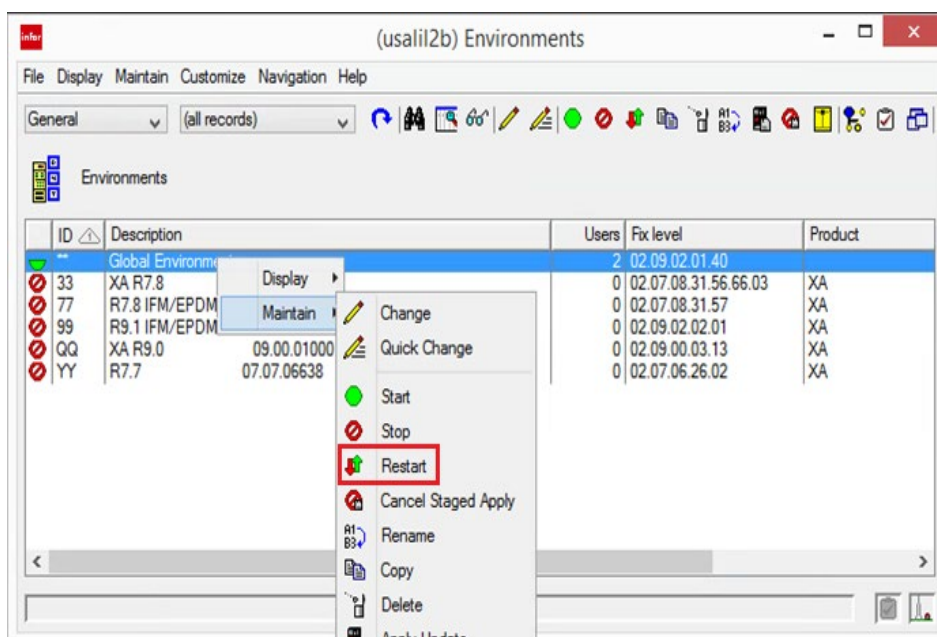


3 If **SE 8 64 bit** or **SE 8 32 bit** is not displayed, switch to edit mode and select an SE 8 option. You can use **SE 8 32 bit**, but **SE 8 64 bit** is preferred. Contact Infor Support if:

- Neither SE 8 option is available.
- You have a new P9 version of the IBM i server and you are using SE 7 as an alternative for an issue with System-Link.

Do not proceed with this process if you are unable to select SE 8.

If you have changed the version of Java, restart the global environment.




Verify the managing system of your Link Manager

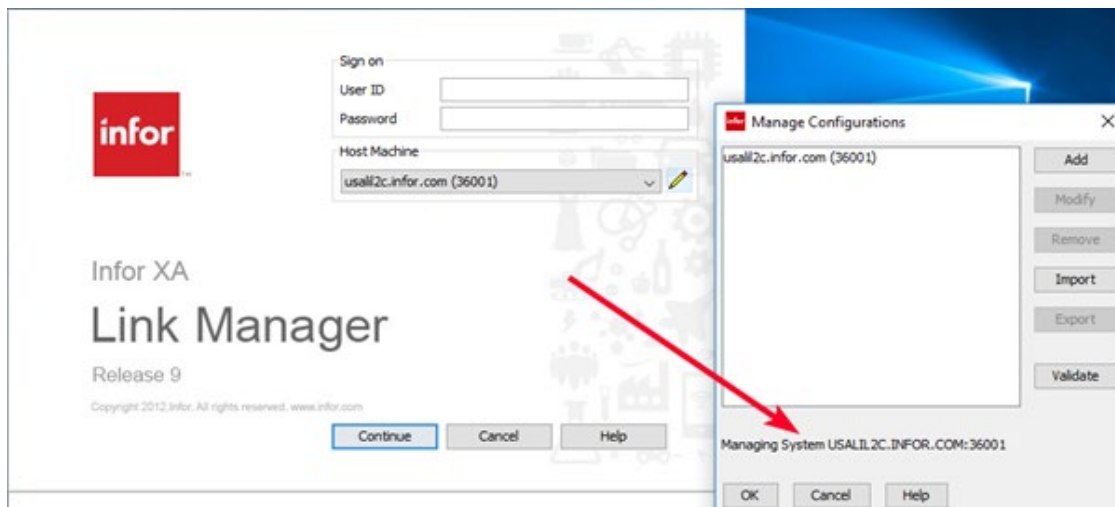
If you are using multiple IBM i servers, you must verify that the managing system is correct and is set to the IBM i server to which the Corretto build must be applied.

The managing system is used for updates to Link Manager and the launcher component of Power-Link.

To verify the managing system:

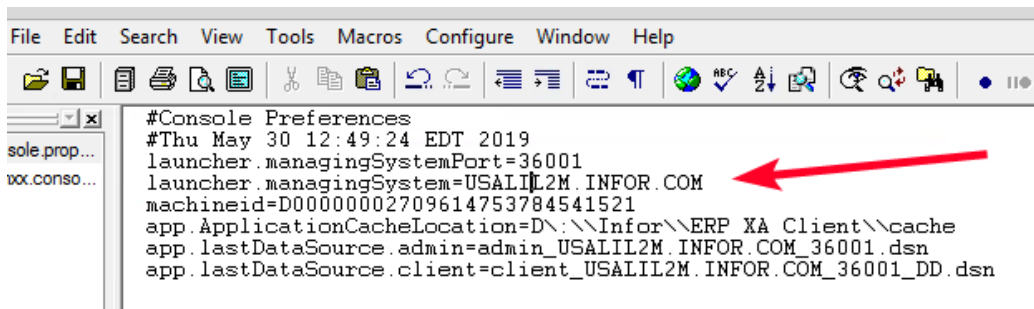
- 1 Start **Link Manager** but do not log on.
- 2 Click  **Host Machine** field to open the **Manage Configurations** window.

The managing system is displayed at the bottom of this window:



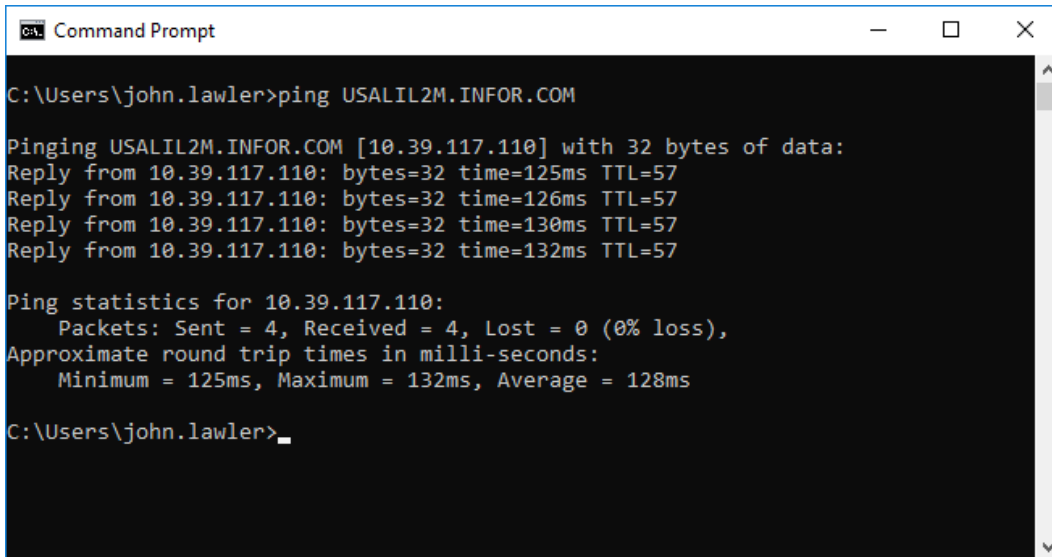
- 3 Verify that the correct value is displayed for **Managing System**. The current system must be displayed and not any other LPAR / IBM i. If required, open the installation folder for this Link Manager client and correct the managing system entry.
- 4 Right-click the `console.properties` file in the install folder and click **Edit**.

You must open the file in Notepad or a simple text editor. Do not use MS Word or any other sophisticated editor. The file contains this information:



- 5 Correct the IBM i server name for the `launcher.managingSystem` property.

Note: You can verify the name and syntax of the system name using the ping command in a Windows Command Prompt:



```


C:\Users\john.lawler>ping USALIL2M.INFOR.COM

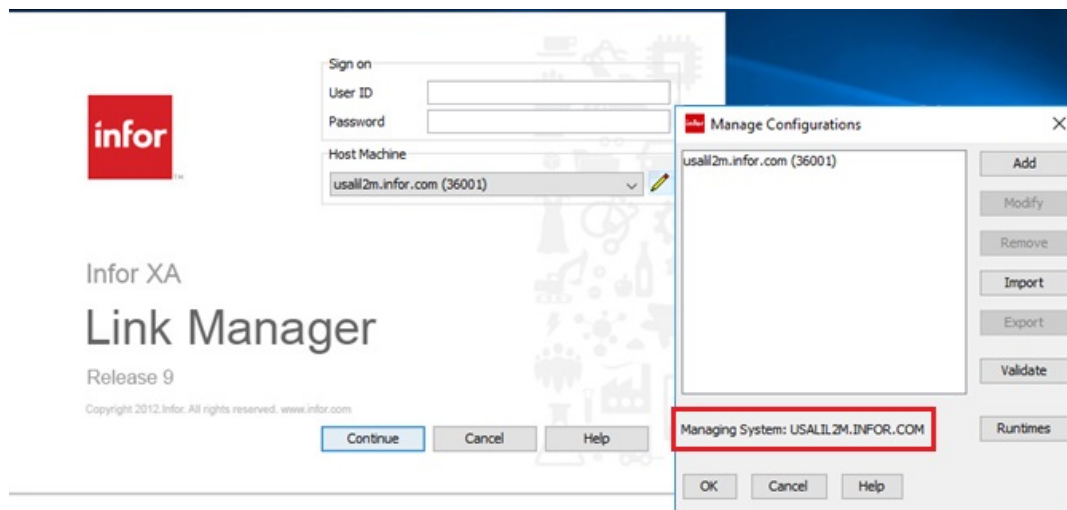
Pinging USALIL2M.INFOR.COM [10.39.117.110] with 32 bytes of data:
Reply from 10.39.117.110: bytes=32 time=125ms TTL=57
Reply from 10.39.117.110: bytes=32 time=126ms TTL=57
Reply from 10.39.117.110: bytes=32 time=130ms TTL=57
Reply from 10.39.117.110: bytes=32 time=132ms TTL=57

Ping statistics for 10.39.117.110:
    Packets: Sent = 4, Received = 4, Lost = 0 (0% loss),
    Approximate round trip times in milli-seconds:
        Minimum = 125ms, Maximum = 132ms, Average = 128ms

C:\Users\john.lawler>_

```

- 6 If you changed your managing system, then restart Link Manager to confirm the managing system has been updated.
 - a Start the Link Manager. Do not log on.
 - b Click  next to the **Host Machine** field. The Manage Configuration card is displayed with the name of the Managing System at the bottom:



- c Ensure that the Managing System that you specified is being displayed in the Manage Configurations card.

Apply the client fix pack

Download the appropriate fix pack and copy the pack to the usual /Infor/fixes folder in the IFS of the IBM i server:

- Release 9.2 SH16194 contains SH16194.692 from KB 2066014
- Release 9.1 SH16195 contains SH16195.690 from KB 2066018

This fix pack has been built with Corretto 1.8 Java rather than Sun or Oracle and contains all Java classes. The process to apply this fix pack is the same as a usual monthly fix pack.

Note: You must copy only the client fix pack and not the Java client runtime component (file name begins with 'JavaFix').

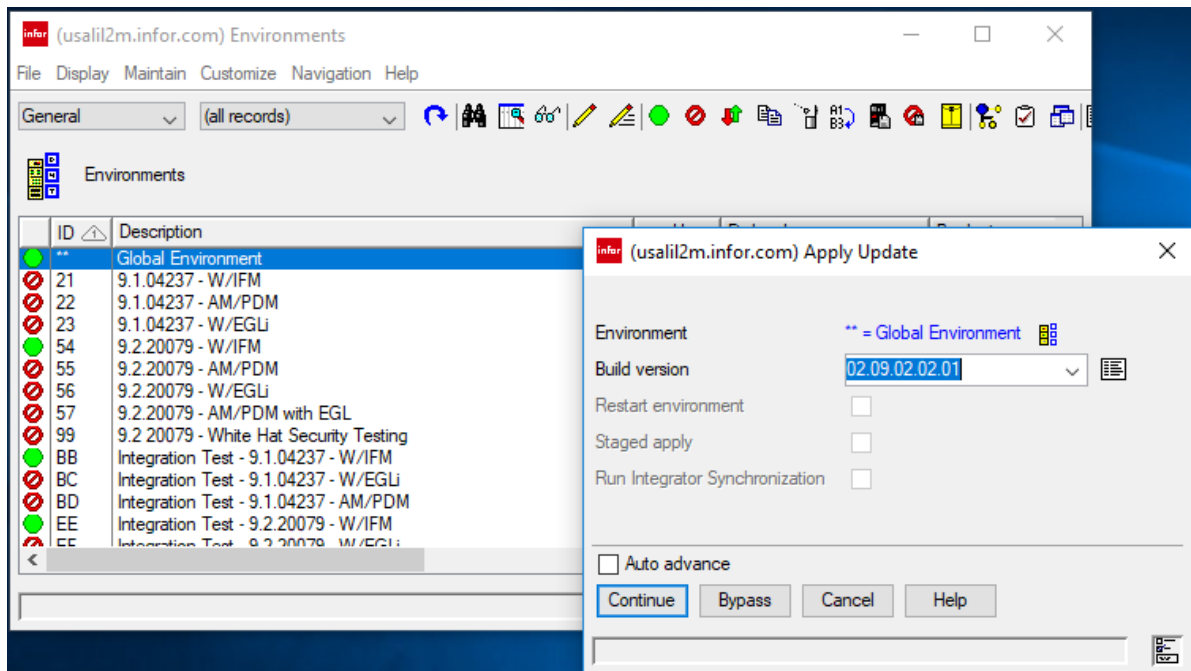
To apply the fix package:

- 1 In Link Manager, open the Environments object on the **Configuration** card.
- 2 Check the number of users. If the number is greater than 1, right click the row, select **Display > User Logins**. Switch the subset from (**all records**) to **Active Sessions** for ease of use.

| Active | User | Workstation | Client type | S |
|--------|-------|-----------------|--------------|---|
| Yes | MDILL | usalvwhcl01-002 | Link Manager | 0 |
| Yes | JLAWL | lp-9v2fpq2 | Link Manager | 0 |

Note: One of the users in the **User Logins** list card is the current user who is applying the fix package. The other users must be informed to exit their Link Manager session.

- 3 Right click the **Global Environment** object in the **Environments** list card and select **Maintain > Apply Update**. The **Apply Update** window is displayed:



- 4 Select the fix pack in the **Build version** field and click **Continue**.

Note: Link Manager can take several minutes to validate the fix pack and respond.

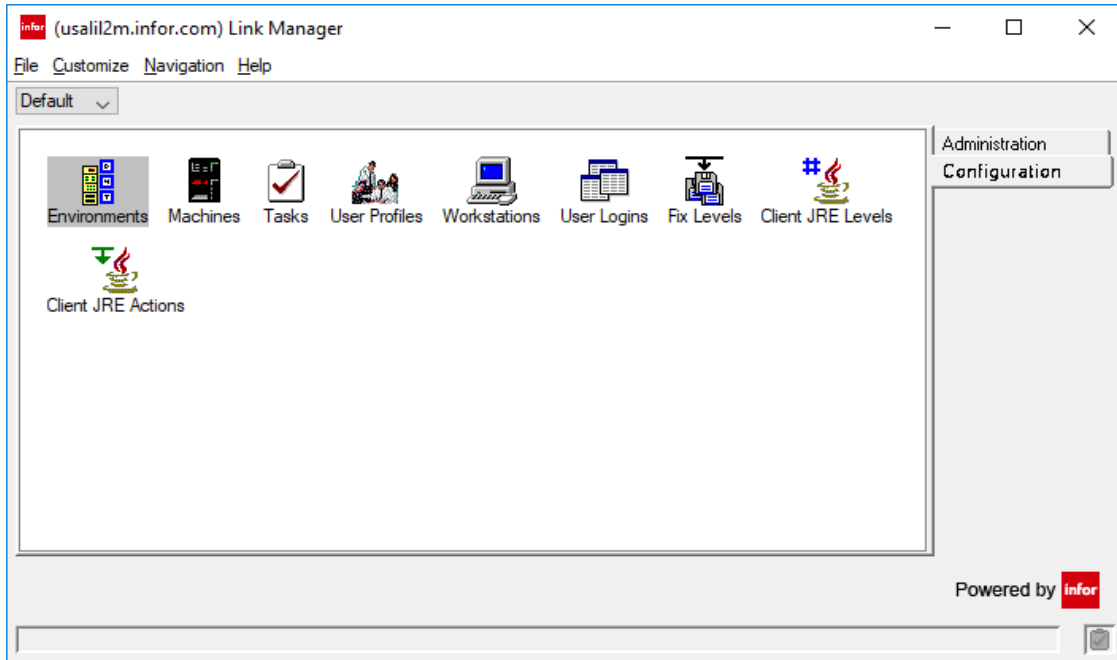
- 5 Exit Link Manager.

You can follow the progress of the update process using the command:

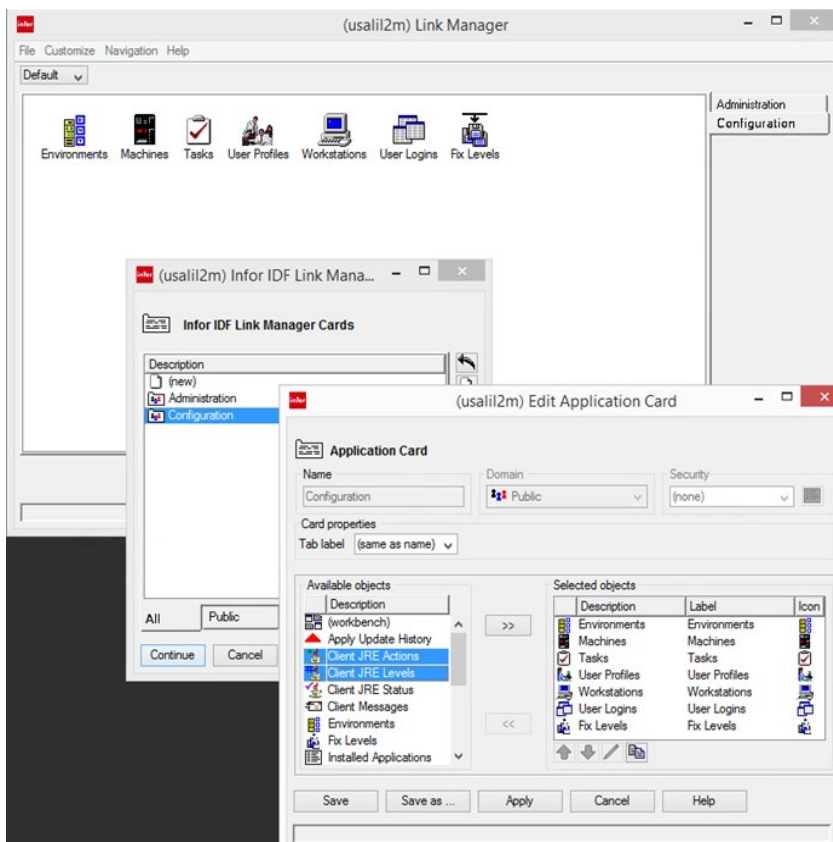
```
wrkactjob sbs (qusrwrk)
```

The progress is in this sequence:

- a The JxySLI (System Link Inbox) environment processes ends
 - b MPXREGSRV completes the process of applying the pack and ends.
 - c The two MPX jobs restart.
- 6 Restart the Link Manager after applying the fix package process is completed. Two new objects, **Client JRE Levels** and **Client JRE Actions** are displayed on the **Configuration** card:



Note: If these objects are not displayed, the card may have been customized. Check if the objects are available to be added to the card.



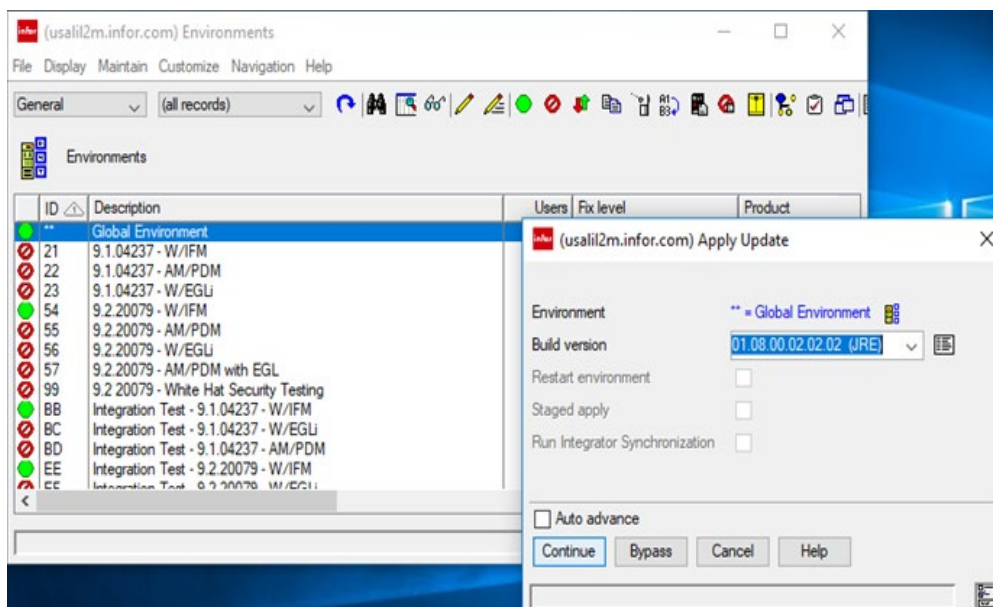
Apply the Java client runtime component fix pack

This is a new type of component fix pack that contains the new Java runtime. You can apply this fix pack similar to any fix, especially like the existing component packs for Help and Translations. Currently, there is only one such pack. However, more packs can be issued in future if further Java updates are required.

You can download the **JavaFix-JRE-01.08.00.02.02.02.dat** fix pack from KB [2066020](#) to the usual **/Infor/fixes** folder in the IFS of the IBM i server.

To apply this fix pack:

- 1 In Link Manager, open the Environments object on the **Configuration** card.
- 2 Right click the **Global Environment** object in the **Environments** list card and select **Maintain > Apply Update**. The **Apply Update** window is displayed:



Note: There can be several minutes delay after selecting **Apply Update** while the system analyzes the file.

- 3 Select the fix pack with the suffix **(JRE)** in the **Build version** field and click **Continue**.

Note:

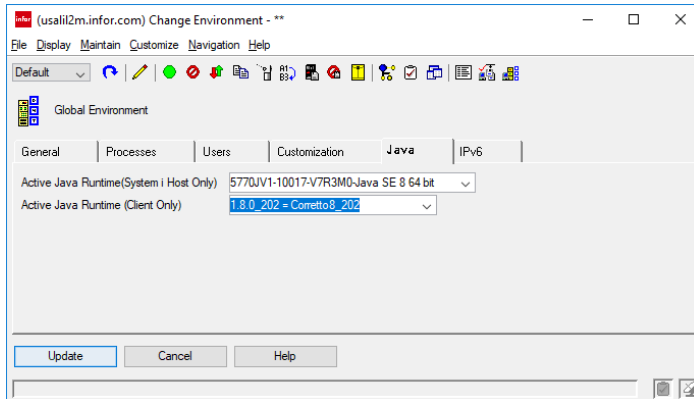
- To monitor the progress of applying the fix pack, open the Tasks card on the **Configuration** tab and verify that this task has completed before moving to the next step.
- This fix pack does not require a restart of the Global Environment. The contents are the new JRE for clients and hence is not used on the IBM i server. The fix pack is only stored there for download to clients.

Set the Client Runtime of the Global Environment

After the Java client runtime component fix pack is applied, the runtime can be used for client processes.

To set the Client Runtime of the Global Environment:

- 1 In Link Manager, open the Environments object on the **Configuration** card.
- 2 Double-click Global Environment and select the **Java** tab.



A new attribute, **Active Java Runtime (Client Only)**, is displayed to set the client JRE. By default, this field is set to **(blank) = No JRE Override**. This means clients run with the JRE already installed. It is recommended to select **1.8.0_202 = Corretto8_202** to use JRE 1.8.

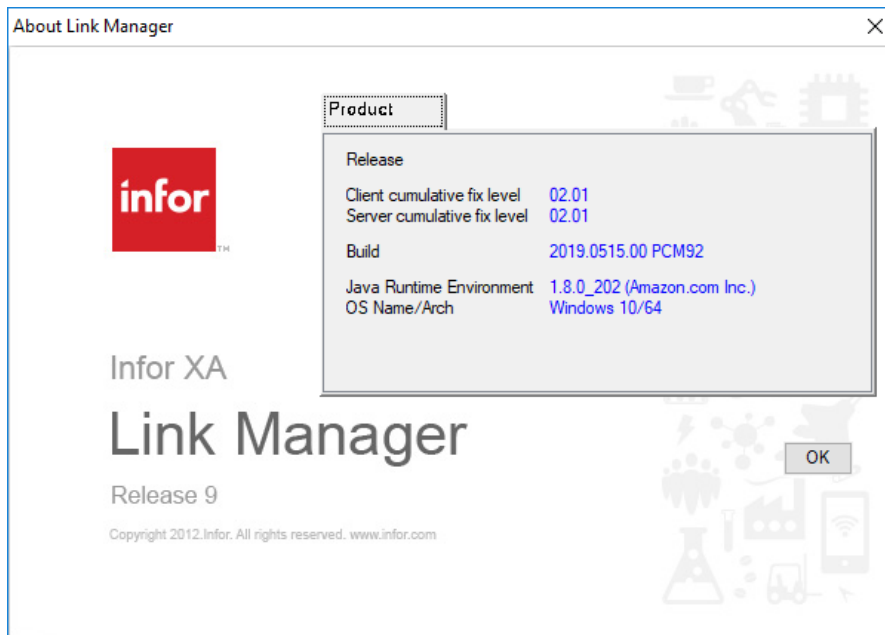
After verifying that the submitted tasks are completed, by default, the **Active Java Runtime (System i Host Only)** field is set to SE 8 that has been set in the previous step of the process.

- 3 Restart the Global Environment and Link Manager for the changes to take effect.

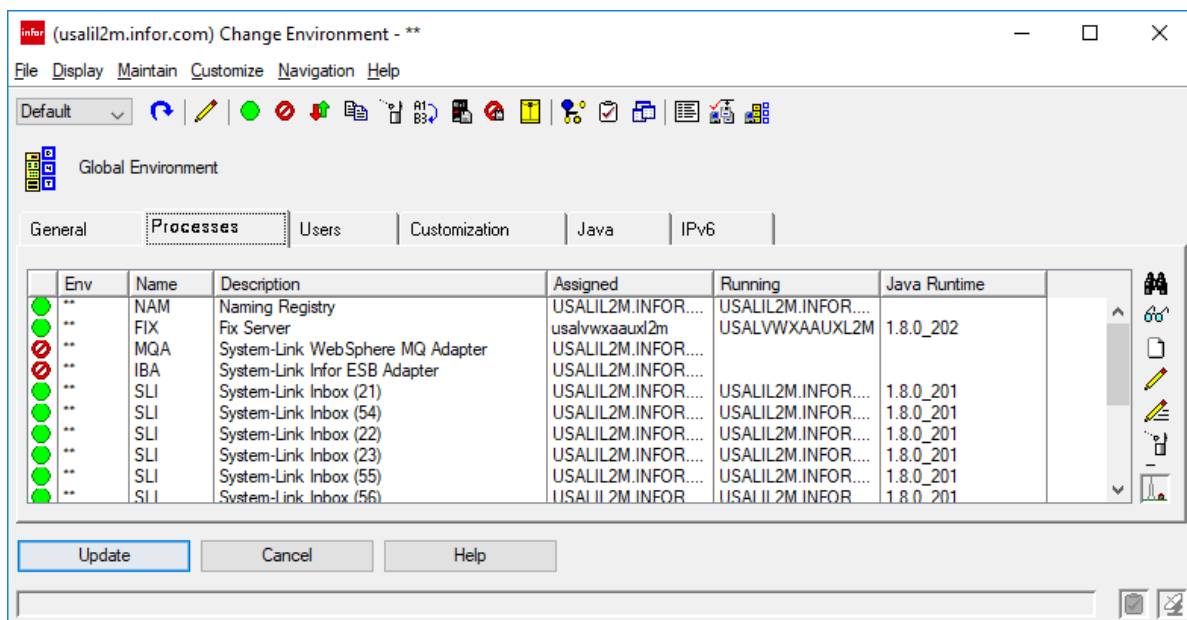
Note: During the restart of Link Manager, you can notice the new JRE objects being downloaded.

The other instances of Link Manager associated with the same managing system are upgraded to the new run time automatically. Instances of Link Manager with other managing systems without this fix, cannot connect to this system.

- 4 Check the run time of Link Manager. Select **Help > About**. This information is displayed wherein, Amazon is displayed and not Sun or Oracle:



- In Link Manager, start the Environments object on the **Configuration** card. Double-click the Global Environments and select the **Processes** tab. For the running processes, 1.8 must be displayed for all (see the screenshot below). The exact level depends on whether the process is running on the IBM i server or an auxiliary machine.

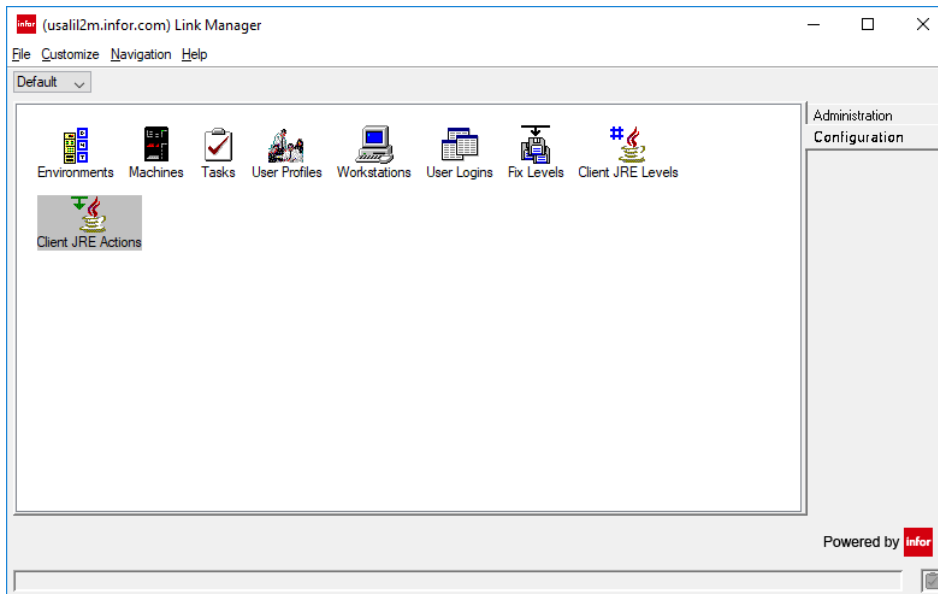


Make the Client Runtime available for download

This optional step can ease the switch to the new Java runtime. The runtime is downloaded if users log on during the specified period. This occurs during normal operation and does not cause a delay to log on.

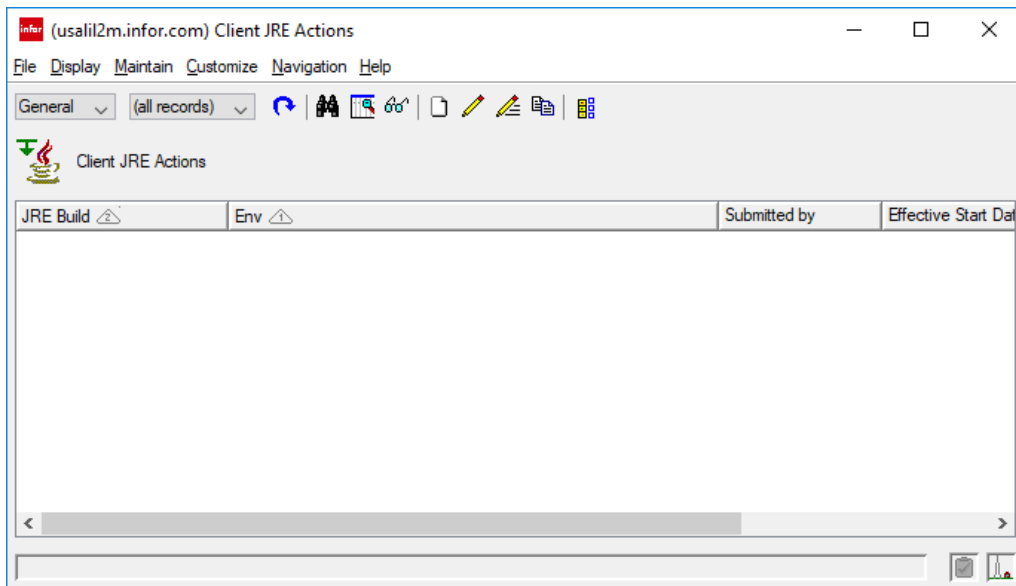
If this option is used, the launch time for users is reduced when the environment is set to use the new JRE as Runtime is already available to Power-Link. If this option is not used, Power-Link does not fail but additional time is spent to download the Runtime which leads to a delay during log on.

Client JRE Actions is a new object added to the **Configuration** card of Link Manager:



To make the Client Runtime available for download:

- 1 Double-click to open the Client JRE Actions object. The list is initially empty:



- 2 Click **New** to add a new action. The **Create Client JRE Actions** card is displayed:

- 3 Select the **JRE Build**. Currently, only the build that you just installed is available in the list.
- 4 Select the **Environment**.
- 5 Select the **Effective Start Date**. The download starts on this date.

Note: By default, the current system date is set in this field. However, you can change it to a date in future.

- 6 Select the **Effective End Date**. The download ends on this date.

Note:

- The JRE is shared between environments and multiple downloads do not occur. The first client that requires the new JRE, triggers the download.
- The download occurs only if the JRE is not already available to the client. So, for a shared installation, for example, a Citrix server, the download is triggered by the first user and does not occur for the other users.
- This only controls the background downloads of the JRE. Once the environment has been marked to install the new JRE, clients download JRE if necessary, regardless of the entries in this object.

Set the Runtime for use

Prior to completing this step, each Power-Link installation must also select the same managing system. See [Verify the managing system of your Link Manager](#) section.

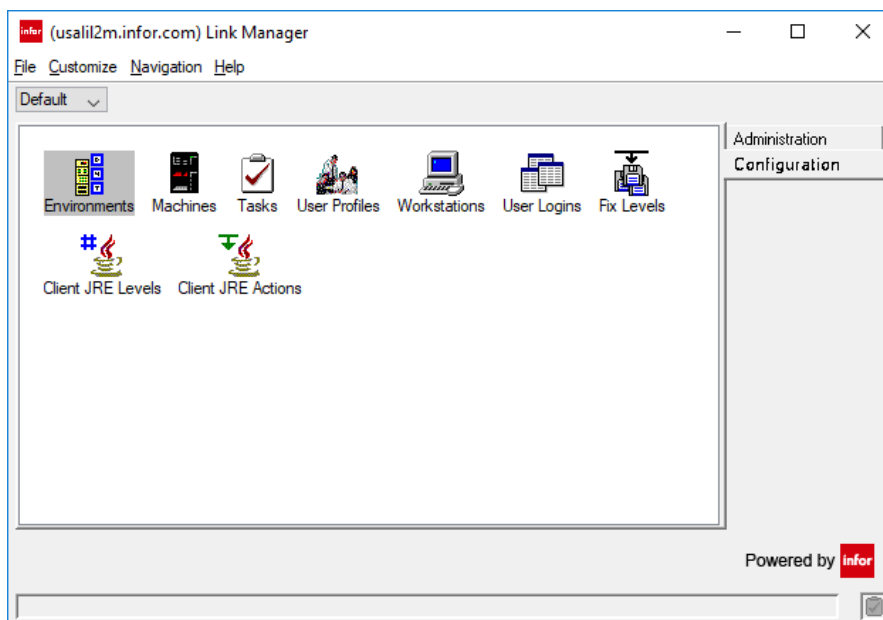
This step specifies that an environment requires a particular version of Java. Currently, one option is available: the Corretto version in the fix pack that is just applied.

This step is required before you can apply the new fix pack to the environment.

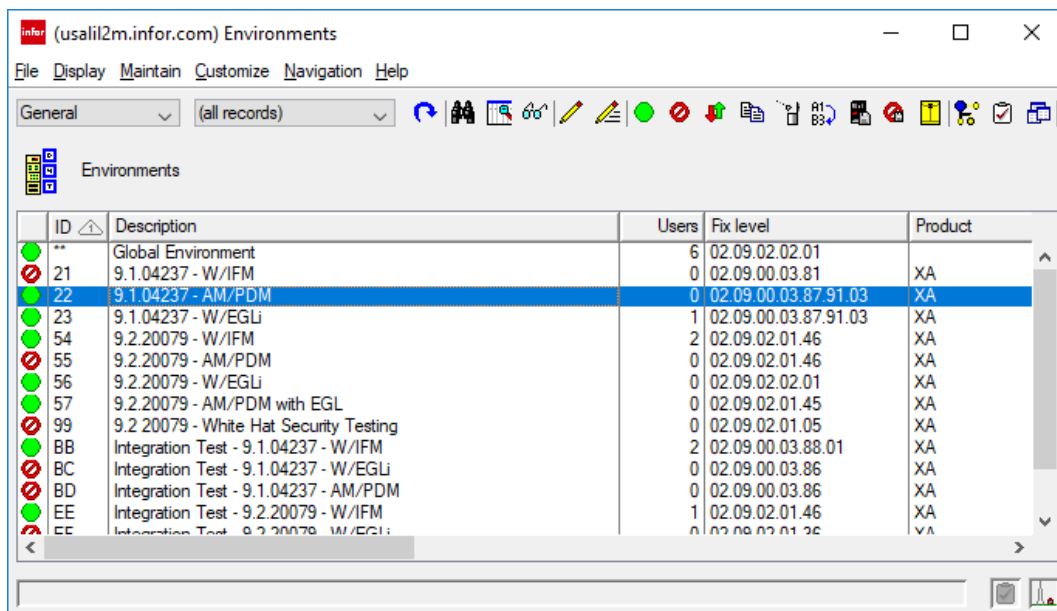
It is not necessary that the client already has the selected version of Java. If the client does not have the selected version of Java, it is downloaded on the next launch.

To set the Runtime for use:

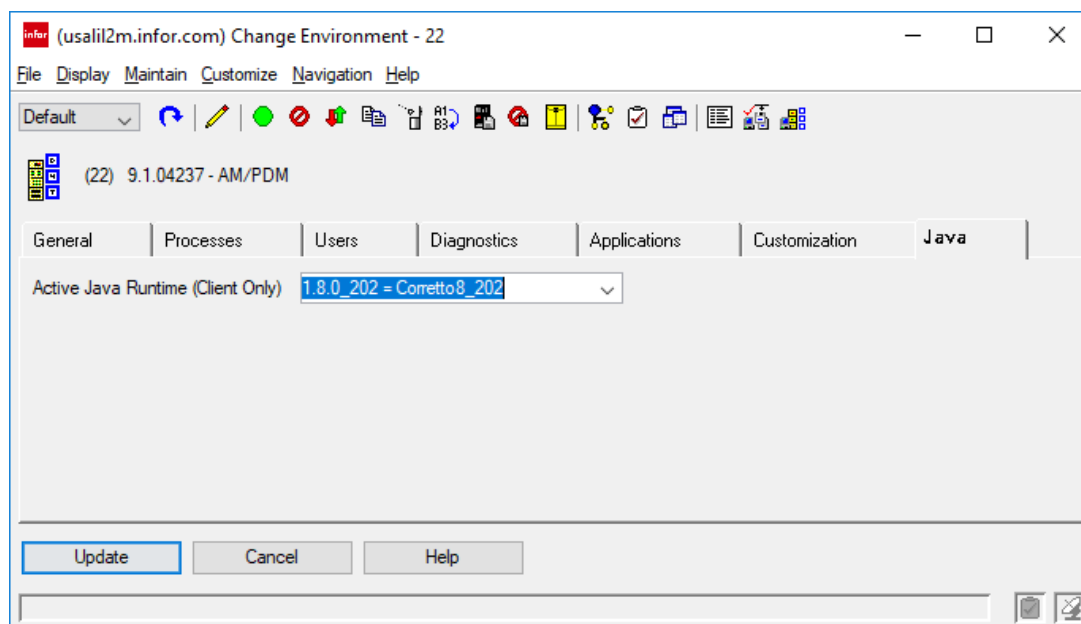
- 1 Go to the **Environments** object on the **Configuration** card.



- 2 Double-click the **Environments** object. The **Environments** list card is displayed:



3 Edit the selected environment. The **Change Environment** attribute card is displayed:



4 Select the **Java** tab.

5 Select the required runtime in the **Active Java Runtime (Client Only)** field. Currently, only two options are displayed:

- **(blank) = No JRE Override specified**
- The Java version that you just loaded. Currently, the version is **1.8.0_202 = Corretto8_202**.

Note: You must select the new version.

This does not trigger a restart of the environment. The next time a client process is started, the environment is launched with the specified Java runtime. When a user logs on to the environment next time, the main browser is launched with the specified Java runtime. If the Java runtime is not available locally, the runtime is downloaded from the server before the environment is launched.

Business environments

You can update the business environments after you complete the update of the global environment. This is the usual fix pack apply but with a Corretto fix pack:

| Version | KB |
|---------|----------------------------|
| 7.8 | 2067452 – Download SH16196 |
| 9.1 | 2066018 – Download SH16195 |
| 9.2 | 2066014 – Download SH16194 |

For 9.1 and 9.2 business environments, you can upgrade the business environments immediately after the global environment or later if you wish. You may continue to run non-Corretto business environments with a Corretto global if the client level is high enough to support Java 1.8. These levels, or higher, are recommended:

| Version | IBM i | Minimum client level |
|---------|--------|----------------------|
| 9.1 | Not P9 | 03.66 |
| 9.1 | P9 | 03.90 |
| 9.2 | Not P9 | 01.24 |
| 9.2 | P9 | 01.49 |

For the 7.8 version business environments, your global environment version must be 9.2. See detailed instructions in KB 1598422. After you apply the 9.2 Corretto client build to the global environment, to use 7.8 business environments you must immediately apply the 7.8 Corretto build to 7.8 business environments.