



Information for potential new Townfield Ministers

The Townfield Minister

Job description

The Townfield Minister will work across both Townfield and St Andrews Churches as part of the full staff team (consisting of the Rector, Training Curate, Youth Pastor and office staff, plus two active Readers at Townfield). 80% of the Minister's week will be dedicated to leading Townfield Church, with the remaining time being spent supporting the activities at St Andrew's Church, including leading the evening services, weddings, funerals and other parish ministries.

As an established church plant, the Minister will help Townfield, in the first 12 months, explore what 'independent' might mean, establish if the church wants to become 'independent', and, if so take them there over the following two years and beyond.

The role will require leadership to bring Townfield's mission 'bless, belong, believe' to life, requiring a high level of committed to developing the excellent links with the school and the Church, with a view to reaching the wider community. It will also involve pastoral and visionary leadership, and move the church on in its prayer ministry and understanding of its finances and the place of giving, whilst encouraging a wide range of gifts and developing people into ministries and leadership.

The post is for at least five years.

Person specification

The Minister:

- is a gifted bible teacher and preacher to a wide variety of people
- is passionate about reaching the lost and nurturing Christian faith
- is committed and experienced in working with and building a team
- is a proven self starter
- has strong pastoring skills
- is committed to the people, values and vision of Townfield Church
- regards prayer as an essential ministry, both corporately and personally
- can develop new and existing ministries
- is able to lead and inspire initiatives in support of strategy
- is willing and able to delegate
- is well organised and able to work flexibly and dynamically across ministries
- is fun and willing to embrace adventure

Housing

The house for the Townfield minister is located just 5 minutes walk from Townfield and 10 minutes from St Andrews and the Parish Office.

It is a detached 4 bedroom house; our current minister uses one of the downstairs rooms as a study, leaving an extended lounge/dining room and kitchen downstairs along with separate toilet. The garden is private and screened by a fence and trees from the road. Off road parking is available as well as a garage.



Living in Bebington

Bebington is a mixed suburban residential area, known locally as “the village”, mainly comprising three-bedroomed semi-detached households of average affluence, but also with significant parts of less affluent social housing. The parish covers the core of this area. Although part of the Diocese of Chester, Bebington, being situated on the Mersey side of the Wirral peninsula, looks towards Liverpool as its main centre of employment, together with Unilever which operates from the adjoining garden suburb of Port Sunlight.

Bebington acts as the civic centre for the surrounding area, and is therefore well served by a main branch library and a regional sports centre in addition to a police station, town hall, medical centre, local shops and so on. The county operates a grammar school system, and the Wirral Boys' and Girls' Grammar Schools are located in Bebington, alongside Bebington Sports College and Plessington Catholic high school. A wide range of state and church primary schools are also in the area, including our own church school of St Andrew's.

Looking slightly further afield, good motorway and rail connections link Bebington to Liverpool and Chester (20 mins), Manchester (40 mins), North Wales (60 mins), Leeds (2 hours), the Lake District (2.5 hours) and London (3 hours).

Our Congregation visit a number of Christian events

Keswick:

"We go for the really impressive teaching and the relaxing atmosphere. Its not too 'high pressure' and allows you to spend lots of time with your family".

New Wine:

"As a family, New Wine is one of the highlights of our year. We look forward to a week of lively and engaging worship, excellent bible teaching and ministry in the Holy Spirit plus lots of fun and friendship"

Word Alive/ Spring Harvest:

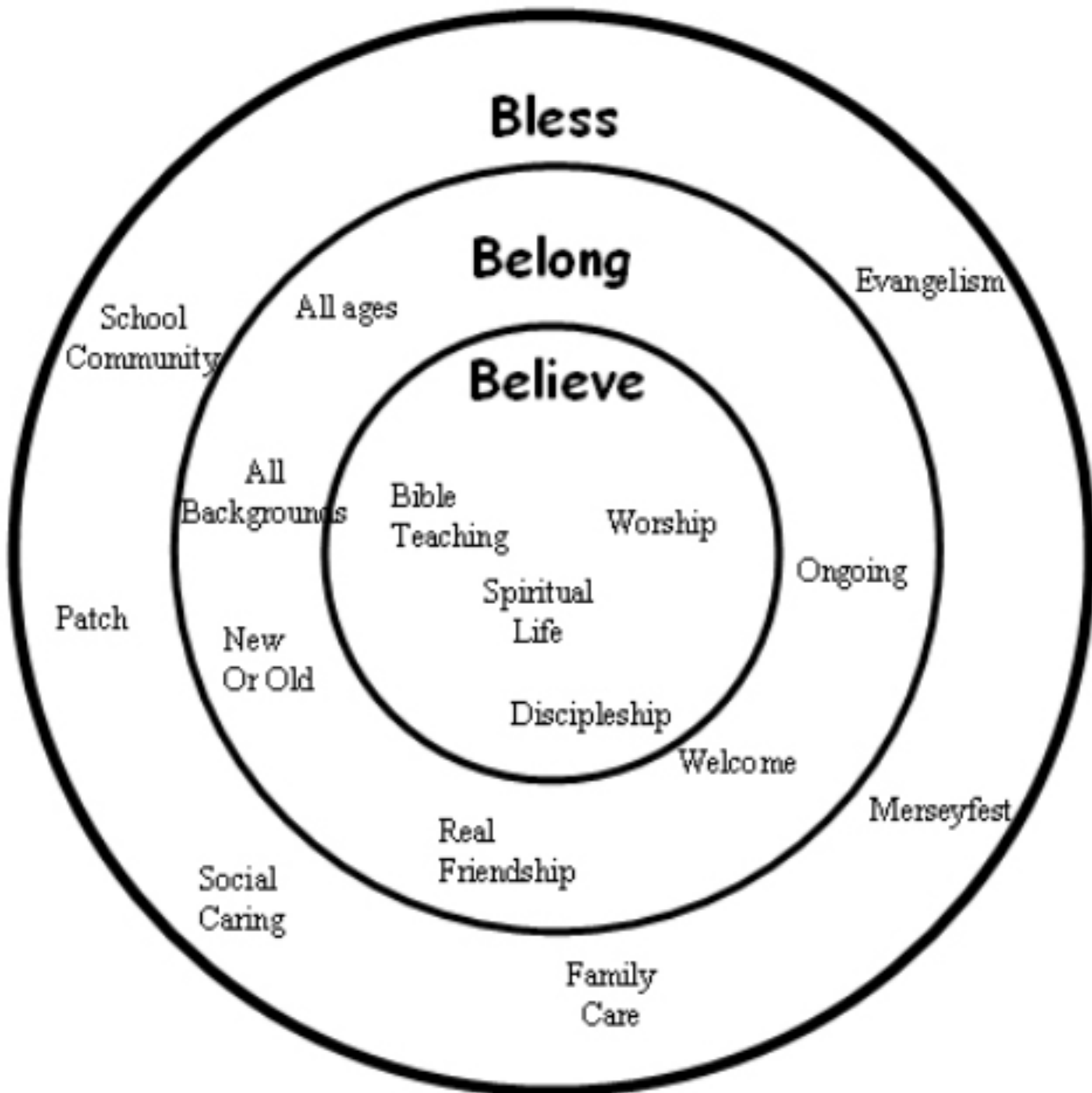
"We really value the excellent and varied teaching programme and the childrens' clubs. It's also a holiday and a time to rest; we make good use of the swimming pool and all the other entertainment and we return feeling refreshed".

Who We Are



Townfield Vision

*“To make Townfield Church
a blessing to our community
where everyone is welcome
and Christ is known”*



Townfield gathers each Sunday in the school hall at St Andrew’s School, Townfield Lane. We have met as a church since St Andrew’s planted Townfield fourteen years ago, and share the same core values and have a very similar churchmanship. The minister of Townfield works very closely with the Rector and staff team and shares the responsibilities of the parish. We have around 85 adults and 45 children who are part of the church, and have members of all ages from 0 to 91+. Not everyone comes every week, but our core is regular and committed in its attendance.



Our one Sunday service splits after we have all met together. The children and young people follow a programme in Sunday clubs whilst the adults stay in the main hall. Sometimes we reverse this for seminars so that adults leave the main meeting and the children stay in the hall.

We might like to think we don't have a 'typical' Sunday service but we do have core elements that can sometimes be recognisably Anglican! We have put lots of effort into making services accessible to people who perhaps haven't been in church before, or for a long while, and have tried to make our services of worship a place where families and children feel welcome and

find ways into deeper commitment to Christ. We use a variety of media to give people points to pray and think about, and reflect and act, beyond the Sunday service. We have seen numerical growth in people coming to faith as well as a deepening of faith and desire to serve.

Our strapline – 'Bless, Belong, Believe' – is being worked out through Sundays, midweek meetings, friendships and relationships with the school which hosts us. We are open at the edges and committed at the core with a large number of the congregation helping to staff activities including: setup and set down, coffee, children and young people's work, preaching, welcoming, prayer ministry, home groups, school links with the community room and service leading.



We have strong links with Tanzania through Crosslinks. Last year two members of the congregation worked in Berega, Tanzania for twelve months. Other members have paid two visits to Tanzania to support churches and projects in Tabora and Berega. We are currently looking for new mission partners through Crosslinks.

Our structures link us to St Andrew's through our Townfield Church Council which is a delegated committee of the St Andrew's Church Parochial Church Council. Some members of Townfield attend both PCC and TCC meetings. We have a Partners in Leadership (PiL) team which looks to develop and support people in Townfield. TCC and PiL were both encouraged by the St Andrew's rector to have an input into the selection of an associate minister for Townfield. We would look to a new incumbent to continue this practice.

Essentially we believe that God has great things in store for Townfield. We continue to seek His face and listen for His voice so that we can join in with the good things He is doing with and through the people of Townfield.

Who We Are

Partners in Leadership

Partners in Leadership evolved in response to a vision from Chester Diocese to develop a more collaborative style of ministry between ordained and lay people. The vision is scripturally based and reflects the relational aspects of leadership rather than a hierarchical model. The gospels record many examples of Jesus engaged in different levels of collaborative ministry. Our Partners in Leadership team consists of 6 mature Christians from different walks of life (some of whom also serve on the TCC or PCC) and the minister of Townfield Church.

The central task of the leadership team is to develop direction, articulate vision, and enable everyone within the congregation to make his or her distinctive contribution to the church body. This is worked out in 3 key areas of church life;

1. Purpose- to develop and communicate the vision of the church.
2. Prayer -central to all that we do.
3. People – to support, love and bless our church family.

Examples of our work

Our first task was to support Townfield during the interregnum which closely followed our commissioning! During that period we helped to oversee the following:

1. Planned a theme for the following 8 weeks.
2. Reviewed the structure and content of the family services.
3. Provided pastoral care for our Sunday Club leaders.
4. Strengthened the music group.
4. Used our tools to help shape a meeting.
5. Clarified the job-description for our new minister.
6. Involved in the selection process for the new minister.

With a minister in place we have continued to work in the following ways:

1. Developing a vision.
2. Developing our evangelistic outreach.
3. Identifying people with gifts and helping them to use them.
4. Working towards church growth and financial independence.
5. Praying for people.

In conclusion, the Partners in Leadership team have developed skills in team work and critical thinking which are used to support the vision of the church and to bless the people associated with it.

Alpha for year 6 at St Andrews school

As part of the links with our Church School we have run a 'Youth Alpha' course for members of Yr 6 before they leave for secondary school. This came about after the minister of Townfield was invited to participate in a 'Question and Answer' time for an RE lesson in year 6. So many good and relevant questions arose that the Alpha course was offered for those interested. Ten (out of 30) children signed up for the course and attended regularly after school on a Thursday afternoon for 1hr. The Yr 6 teacher, minister from Townfield and Youth Worker helped to deliver the course and it was very well received by the pupils. The course finished with a visit to a Liverpool Youth Event to hear the comedian Bobby Ball's testimony. It is hoped we will run the course again next year.

U Time

U Time is a very successful daytime group which meets in the Community room in school. It is a key contact point for people from Church and the school community. Coffee is always available, young children are everywhere and various themes are covered from child development through to Christian living. It is a really helpful meeting through which a number of people have become church members.

Townfield Church is ...

"family friendly"

"fun!"

"thought provoking"

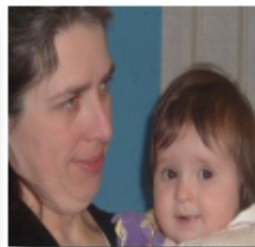
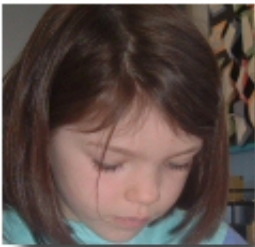
"supportive"

"moving"

"growing"

"connected"

BLESS, BE LONG, BELIEVE



Who We Are

"Believing in Christ as Lord and our only Saviour we believe that we should encourage and enable one another to share our faith with others, in word and action in our daily lives, so that all people might come into a relationship with the Living God."

Outreach

At the very heart of our vision, planning and activity as a church we aim to be people who witness to Christ. Just as the apostle Andrew brought people to hear and meet Christ, at St Andrew's we make it a priority to do the same. Evangelism permeates every area of our church life and we try to become 'all things to all men so that by all possible means [we] might save some.'

To this end we see our outreach events and evangelism as being on a spectrum. At one end of the spectrum we seek to be people who are 'out there' meeting people in our parish and forming friendships and relationships. In thinking through our vision as a church we agreed that whatever ideas were encompassed under the umbrella of 'Connecting the Community to Christ' we did not want to be perceived as a community centre but we wanted to ensure that Christ is at the centre of all that we do. We also recognise that for many people it is the care and support that they find from Christians in times of difficulties that introduce them to Jesus Christ in the first place. So, our prayer ministry teams and bereavement follow-up are as much a part of our evangelistic outreach as our invitation events.

Also, throughout the year we organise events which make links with people. There are too many of these to mention them all but they include times such as the 'Madhatters' tea party for young families, Merseyfest events such as youth 'stuff' in the local park, 'safety awareness' for the elderly, and, together with other churches in the area, organising a huge summer fair which attracted well over a thousand people.

At the other end of the spectrum we are very intentional in our evangelistic message and witness. We have an annual weekend of events under the banner of 'Down to Earth' when we invite an evangelist to speak at a variety of events with a clear and relevant presentation of the gospel. We also take the opportunities offered by Christmas and Easter to speak evangelistically to the hundreds of people who come to our celebration services with music and children's events. We've run holiday clubs, men's and women's events, meetings tailored for older people in our parish and many other such events.

CHRISTIANITY
EXPLORED



*"We aim to follow
Christ's example in loving
all those who make up
our community whilst
holding firm to the
authority of scripture"*

PCC Member

We also invite people to come on enquiry courses. At present we run the 'Christianity Explored' course twice a year and in the past we have run Alpha and other similar courses. It is our hope and aim that we take every opportunity given to us to share the hope that we have in Jesus Christ.

Bereavement Group

There is a team of Bereavement Visitors who visit those recently bereaved. This team is responsible for organising an annual service of thanksgiving, and a monthly bereavement support group called Stepping Stones.

Churches Together

“We believe that Christians are the body of Christ and that it is God’s will that all Christians are unified in Him as they grow up into Christ, the head of the body. We are pleased to have friendly relations with other Christian churches in the parish.”



We are fortunate to be in an area with several other churches who share our vision of outreach. In recent years, through “Churches Together in Bebington” a number of events have been organised to reach the community including a “Riding Lights” production in our local Theatre and an outdoor garden party type event named “Party in the Park”. A service is also held on Good Friday at the local civic centre with Churches Together in Bebington.



In the summer of 2005 we joined together with Youth for Christ to arrange a number of community-based projects under the Merseyfest umbrella. Merseyfest was a week long event in August 2005 and was split into two parts: Community Projects in local areas organised by the local church and a fun family weekend at Croxteth Park in Liverpool.

Mission Support

“As a church we actively support the work and ministry of our brothers and sisters in Christ beyond the boundaries of our own parish, wherever that might be. As part of our membership of the world-wide church family, we believe that we owe fellow Christians a share in our resources, whether of prayer, finance or personal and practical commitment.”

St Andrew's has traditionally supported overseas mission through a carefully thought out policy of mission support. It relates to the responsibilities we should have as part of the Anglican Church family in promoting the spread of the Gospel throughout the world. The six agencies selected represent a wide spread of outreach corresponding to Biblical principles:

1. Church’s Ministry to the Jews (CMJ)
2. Church Pastoral Aid Society (CPAS)
3. Crosslinks: David and Rachel Williams working in Nairobi, Kenya.
4. South American Mission Society:
Our link missionary is Amy Haigh, who went from St. Andrew’s to work in Antofagasta, Chile.
5. Bible Society
6. Tearfund

We have particularly strong links with SAMS. This Society was adopted by St Andrew’s when Colin and Barbara Bazley went to Chile in 1962. Since then 6 other members of the congregation have all served God in South America. Amy Haigh is still working in Antofagasta, a port in northern Chile.

St Andrew's School



ST ANDREW'S C of E (Aided) PRIMARY

Townfield Lane, Bebington, Wirral, CH63 7NL

Telephone: 0151 645 7782 Facsimile: 0151 643 8625

Email: schooloffice@standrews.wirral.sch.uk

Headteacher: Mrs V Woods BA (Hons), P.G.C.E, N.P.Q.H



Bebington Parish Church is greatly blessed and privileged to have a “very good” (Ofsted) Aided Primary School of 210 pupils. St Andrew’s School has a history, spanning 350 years in which, through its Christian tradition, children have experienced the Gospel message of God’s loving care.

Ofsted and Denominational inspections have praised our school for its standards, progress, positive attitudes to learning and personal development; for its governance, leadership, teaching and learning; for its R.E. and collective worship; for its Christian ethos and its relationships with parents, the community and the church; for its use of the school by Townfield Church and for the important contributions of the Parish team in leading school worship and assemblies.





Eleven members of the church, including the Rector, are members of the School Governing Body. Church members, the staff team and the PCC are actively supportive of the school in continual and regular prayer, in personal and hands-on involvement and in generous financial and material support.

The school has a seven or eight hundred strong community of pupils, their parents and families, teachers, support staff and Friends of St Andrew's. The church is aware that this is a fertile mission field within the Parish that, as yet, has not been fully exploited. The school is well placed within a local community where opportunities for extended school links are ripe for development.

These are exciting times to be involved in the interface between and the mutual support and development of church and school!

Additional Information

St Andrews and Townfield Church Attendance Survey 2001

Overview

The St Andrews and Townfield Attendance Survey covered the eight week period 6th May to 30th June. During this period an attempt was made to record (via a voluntary survey card) attendance at every public church-related meeting and activity.

Data quality

- Under-reporting of attendance estimated to be up to around 10%
- Some limited evidence to suggest that men were more likely to record their attendance than women
- Minimal evidence for significant adverse impact from Bank Holidays and school half-term
- Minimal evidence of sample attrition (questionnaire fatigue)

Attendance patterns

'Casuals'

- 30-40% of the congregation for any given service attended only one such service over the eight week survey period.
- 30% of people attending on or more Sunday services attended only one out of eight Sundays
- Of these 'casual' attendees, one in two are Baptism guests or other identified visitors
- One in four 'casuals' are known church members (recorded on the Parish List)
- The remaining one in four 'casuals' are treated as 'visitors' in this report, but are equally likely to be additional casual members.
- There is a clear challenge to the church to engage more fully its fringe members

'Regularity'

- Two in five church members attended services on 6 or more of the 8 survey Sundays
- One in ten church members attended on only one of eight survey Sundays
- A notice given out at all services on one Sunday (e.g. via newsletter) will fail to reach three-fifths of the congregation
- The main morning congregations at both St Andrews and Townfield attracted the most loyal (regular) followings, with people attending other services on a more irregular basis.
- The various evening service congregations contain the greatest proportions of core (regular) church members
- Taking account of weekly service attendance on a household rather than an individual basis makes no significant difference to the survey findings

The characteristics of Sunday service congregations

Age

- One in five members of St Andrews and Townfield are aged 70 and over (excluding Sunday school children who don't attend Family Service)
- This age profile is similar to the parish population they are serving
- The congregation of St Andrews is considerably older than that of Townfield
- The age profile of core church members is significantly older (and less representative)
- Younger members (20s-40s) are less regular attendees; the church faces a challenge in better integrating these people into its regular acts of corporate worship

Sex

- The church continues to face a challenge to attract men through its doors; it is not possible to say how well St Andrews and Townfield are doing in this area compared to other churches

Employment status

- One-in-four members of the congregation are recorded as being in full-time employment, with a further one-in-ten working part time.

Reason for attendance

- The most common reason given for attendance at St Andrews and Townfield was spiritual, closely followed by proximity, family ties and house moves
- Friendship (church contacts) was mentioned surprisingly infrequently, but this may reflect changing reasons for attendance over time (e.g. from friendship to spiritual)
- The role of church in acting simply as the 'local' church should not be under-estimated

Distance from church

- The congregations of St Andrews and Townfield are drawn from both within and beyond the official parish
- Regularity of attendance increases with decreasing distance from church

The characteristics of group memberships

Overlap between Sunday congregations and other group memberships

- A high proportion (25-50%) of Sunday school children appear never to attend an actual Sunday service; are the youth of our church as integrated into the act of Sunday worship as we and they might wish?
- Many of the mid-week groups comprise a bulk of members who either never or frequently attend Sunday services; in other words, it is the core church members who are most involved in providing outreach to others
- Little Fishes and the two Friday night youth clubs appear particularly successful in attracting non-church members

Age and sex profiles

- Housegroups are more youthful than the church as a whole and appear to provide the only significant point of contact for middle-aged men outside of church services

Distance

- No single service or group draws members solely from within the parish

Social composition

- The population of Bebington parish is 'privileged' in comparison to the national average (lower unemployment; more car and home ownership; less over crowding)
- Only one group, Junior Pathfinders (Friday night) appears to be drawn from areas that might be defined as 'deprived' in national terms
- Nearly all groups draw members from areas that on average are more 'privileged' that the parish average
- Of the two churches, Townfield appears to be more successful in attracting a social mix of people representative of its surrounding area; is there a challenge for St Andrews to do likewise, or are other churches in the parish meeting this need?

Age Profiles

