

# Insect Life Cycle Sort: Complete and Incomplete Metamorphosis

## Suggestions for Using This Product

- **BACKGROUND INFORMATION**--This set was carefully prepared to represent life cycles in a variety of ways. A common misconception that students have is that if there are 4 pictures then it is complete metamorphosis and if there are 3 pictures then it is incomplete metamorphosis. This set will challenge students to look at what is happening as the insect develops to become an adult because not all cards fit that mold! Before using this with students, discuss molting (where insects shed their exoskeleton) and that they don't just automatically become an adult. Many grow and molt several times before reaching maturity. In addition, some insects like ants look different based on their role in the colony or whether they are male or female.
- **PREPARATION**--Prepare cards by printing, cutting, and laminating (optional).
- **SORTING ACTIVITY**—Discuss types of metamorphosis and make an anchor chart as a class, having students record characteristics in their science notebooks. Place students in small groups to sort cards by type of metamorphosis, having students record their results on a T-Chart in their science notebooks. Review student results as a class to discuss and clear up any misconceptions. Discrepancies between student groups are a good opportunity to have students explain their reasoning for placing an insect in a certain category.
- **RESEARCH AND REPORT**—Assign individual students or partners an insect and have them learn about that insect and his/her role in the ecosystem. Students can read about and share what they learn about the insect's habitat, food web (including predators or prey), location they are found, similar species, cultural or historical significance, adaptations, etc.

Complete Metamorphosis (15)		Incomplete Metamorphosis (9)	
Flea	Boll Weevil	Roach	<b>NOTE: Only about 12% of insect species undergo incomplete metamorphosis.</b>
Mosquito	Rhino Beetle	Praying Mantis	
Fruit Fly	Mosquito	Head Lice	
Ant	Dung Beetle	Leafhopper	
Butterfly	Fall Cankerworm Moth	Grasshopper	
Darkling Beetle (mealworm)	June Beetle	Bedbug	
Bee		Cricket	
Lady Beetle		Hairy Chinch Bug	
Lovebug		Insidious Flower Bug	

This product, related documents, and clipart are copyright protected and belong to The Pensive Sloth, licensed for single-classroom use ONLY to the buyer. Do not distribute this product, related documents, and clipart outside of one teacher-buyer and his/her students without permission. Do not publicly post or share this product, related documents, and clipart electronically or in print. The classroom teacher-buyer may use the images with his/her students but may NOT publically post, share, or resell them in part or in whole. Additional licenses can be purchased at my store on TPT. School and district licenses are very affordable! Inquiries can be made at [pensivesloth@gmail.com](mailto:pensivesloth@gmail.com).

# Complete Metamorphosis



egg

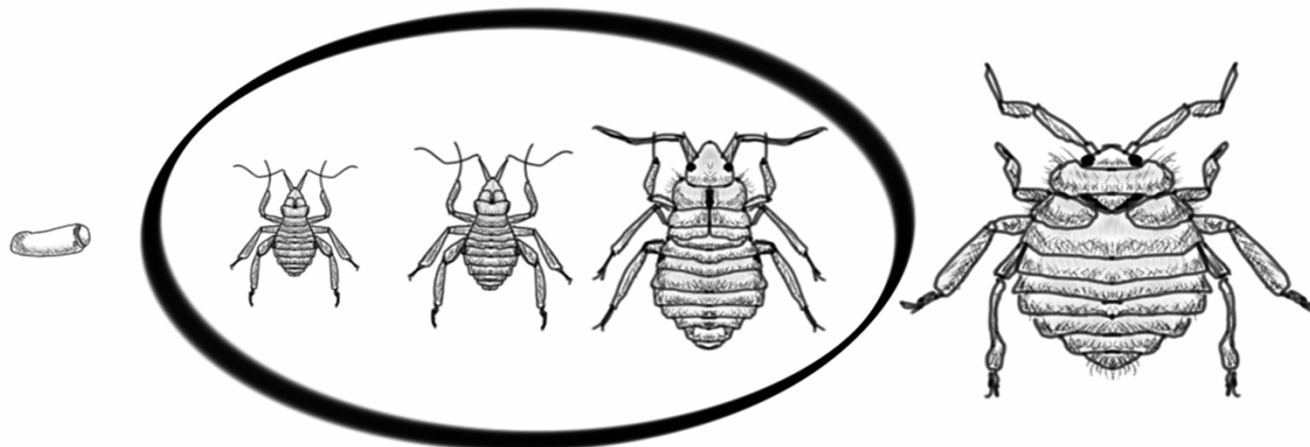
larvae

pupa

adult

The Pensive Sloth © 2014

# Incomplete Metamorphosis



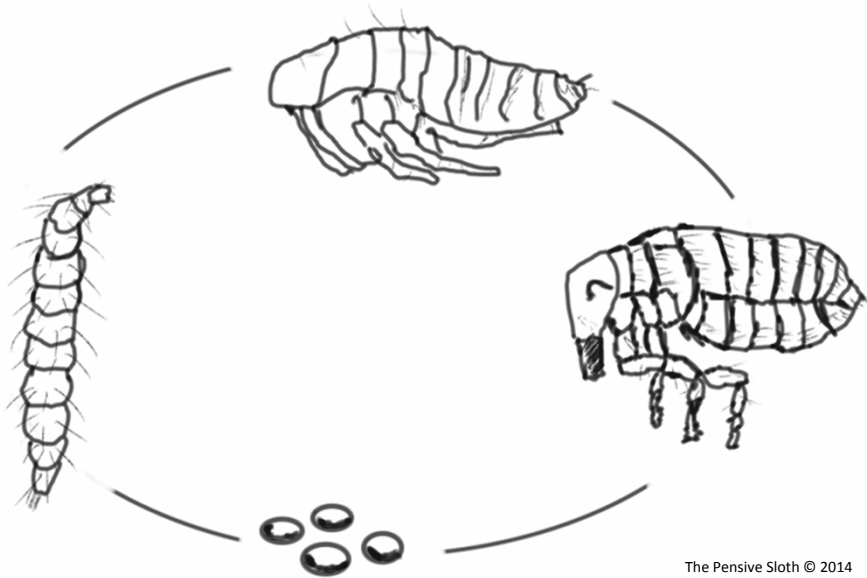
egg

nymphs

adult

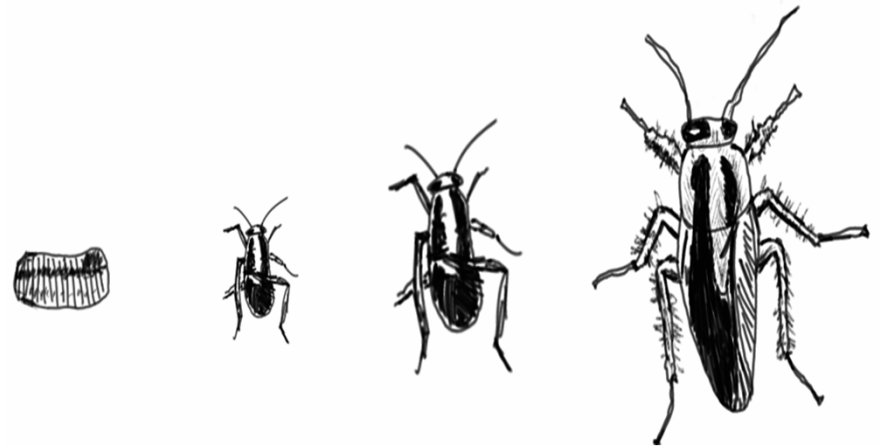
The Pensive Sloth © 2014

### Flea Life Cycle



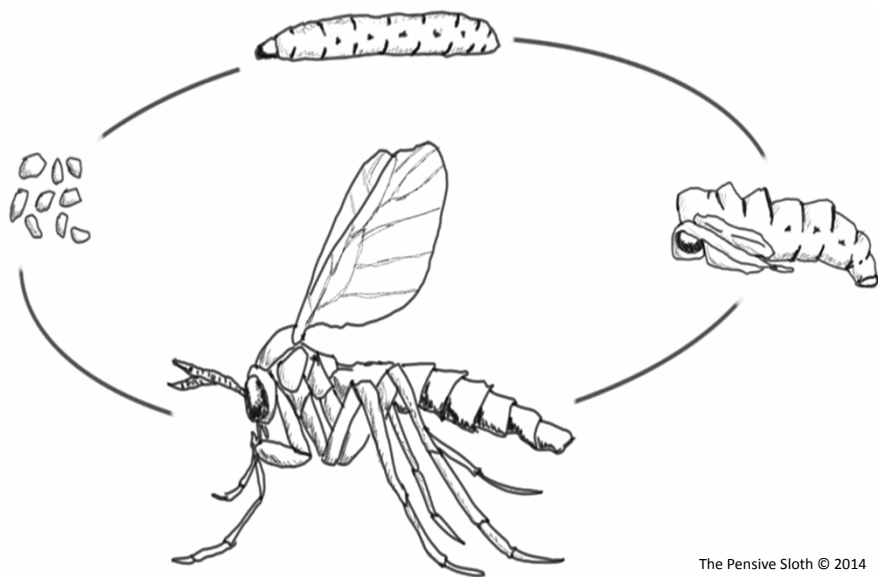
The Pensive Sloth © 2014

### Cockroach Life Cycle



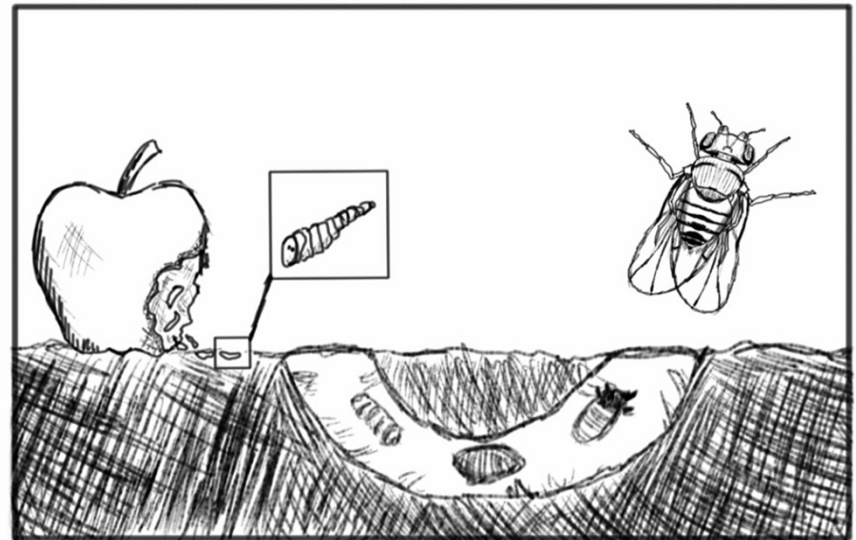
The Pensive Sloth © 2014

### Fungus Gnat Life Cycle



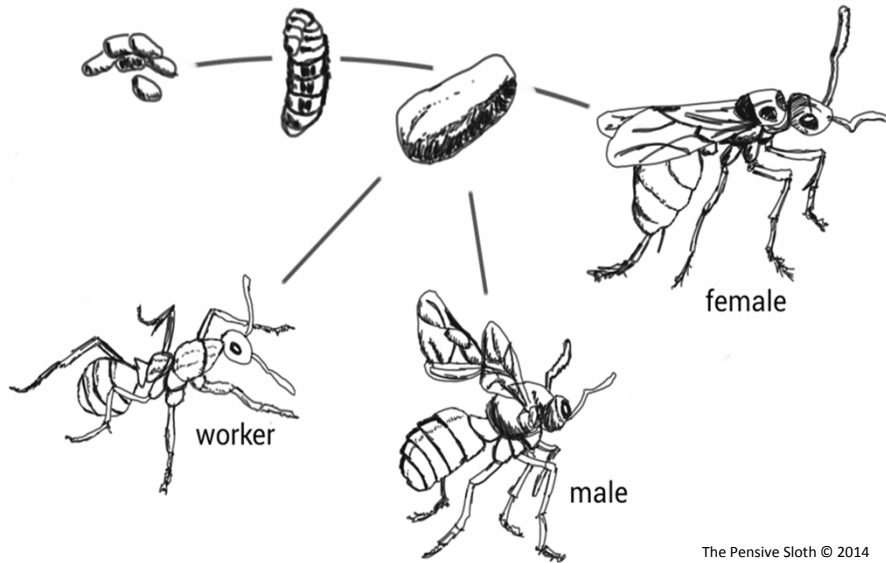
The Pensive Sloth © 2014

### Fruit Fly Life Cycle

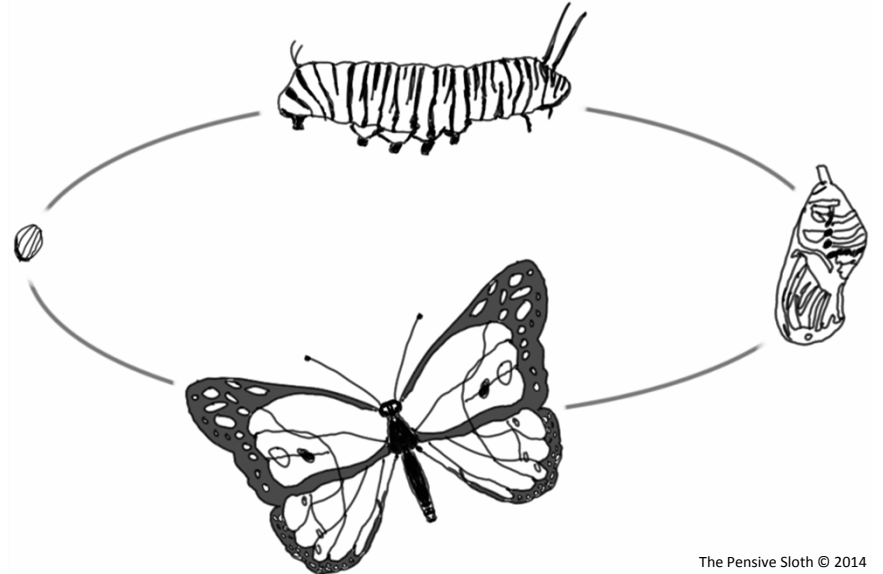


The Pensive Sloth © 2014

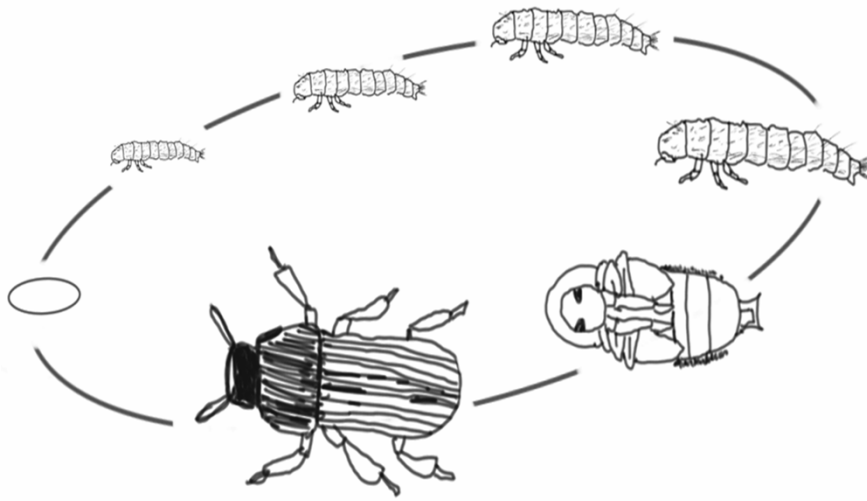
## Ant Life Cycle



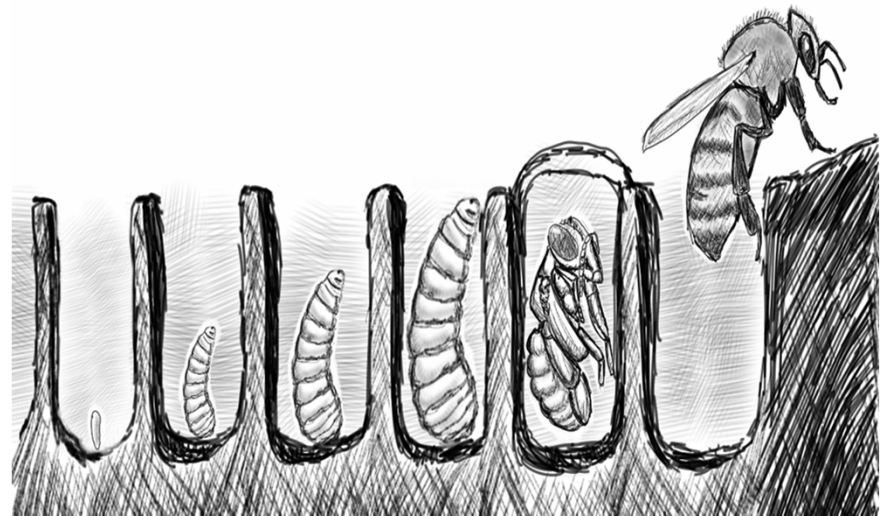
## Butterfly Life Cycle



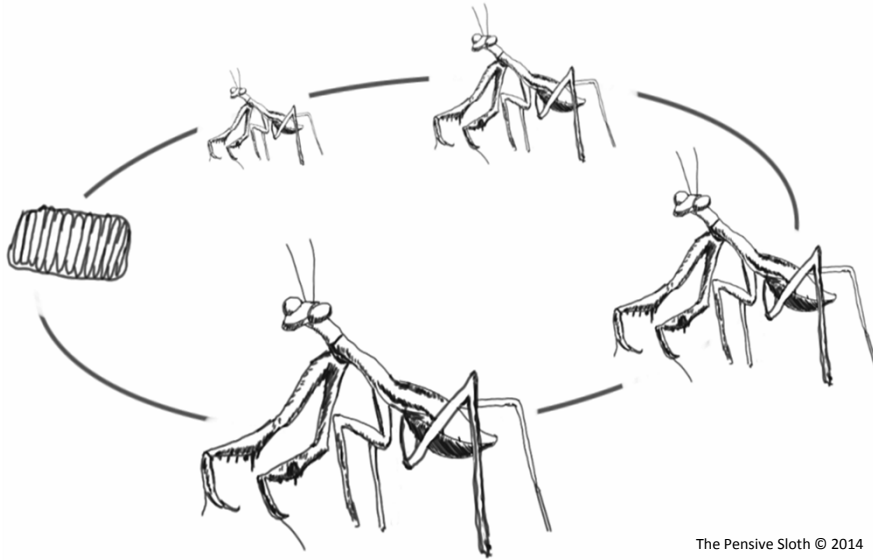
## Darkling Beetle (Mealworm) Life Cycle



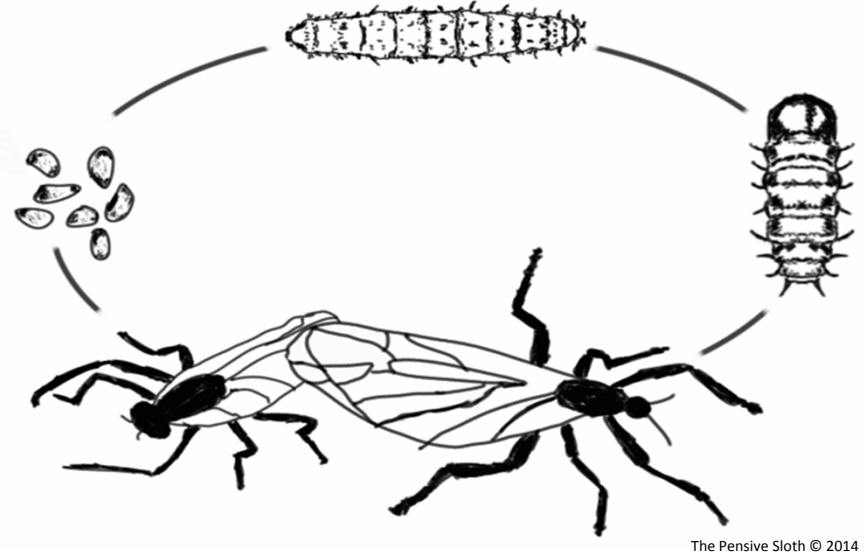
## Bee Life Cycle



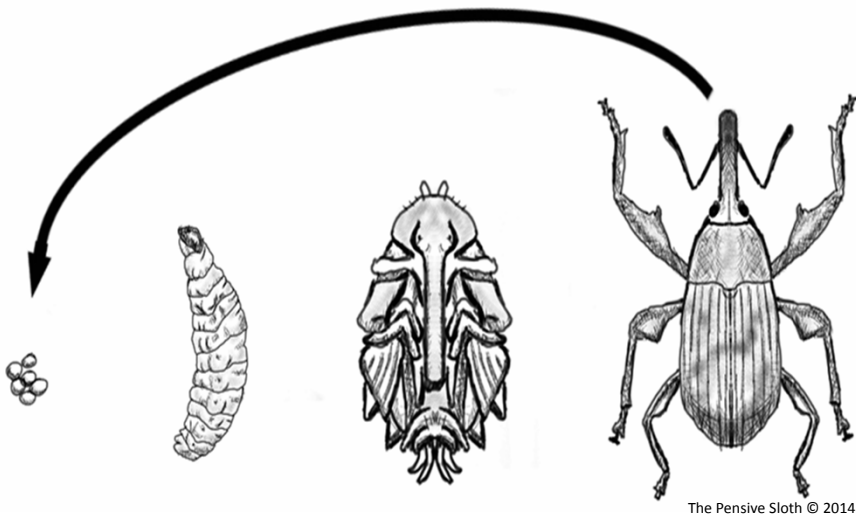
### Praying Mantis Life Cycle



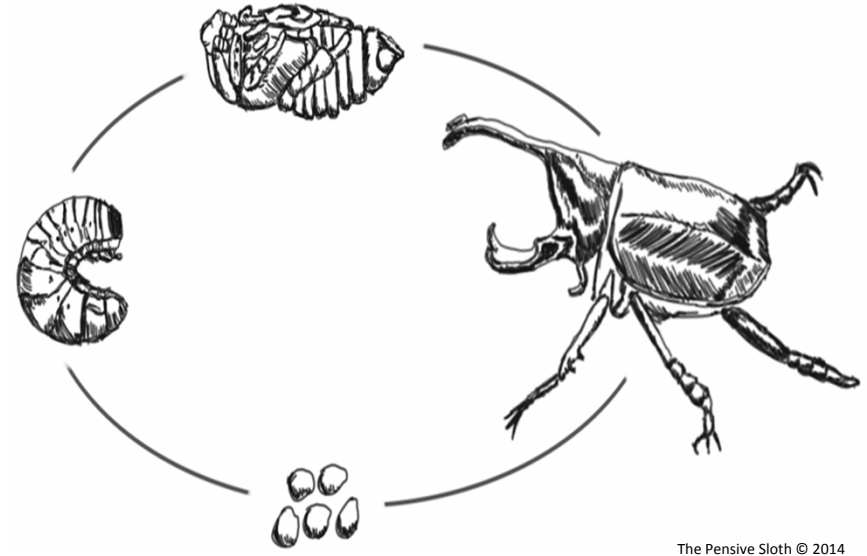
### Lovebug Life Cycle



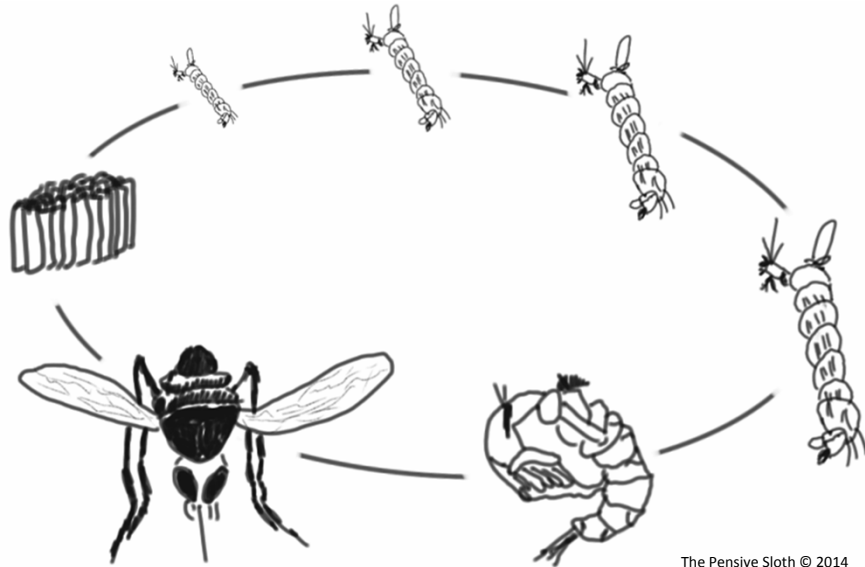
### Boll Weevil Life Cycle



### Rhino Beetle Life Cycle

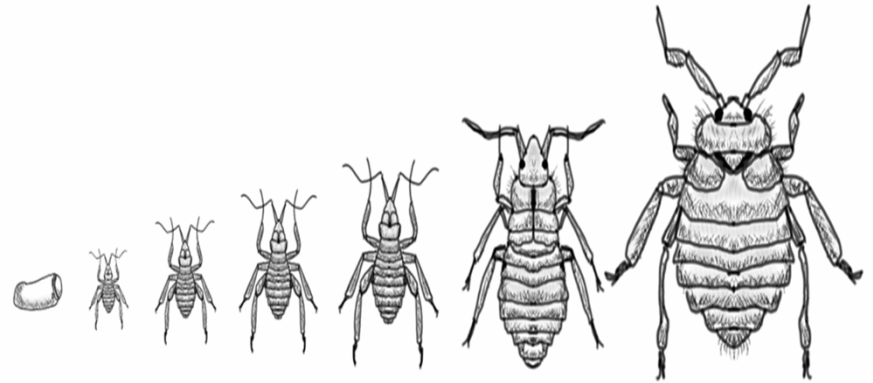


## Mosquito Life Cycle



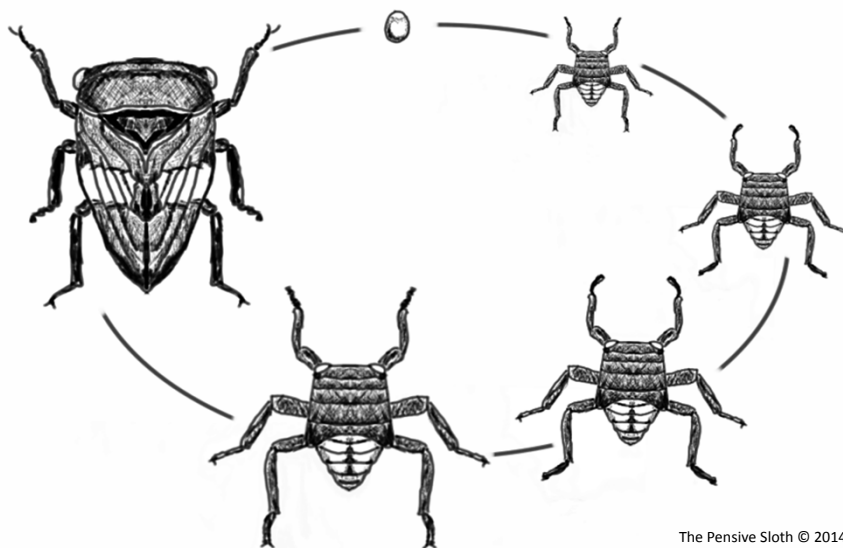
The Pensive Sloth © 2014

## Head Lice Life Cycle



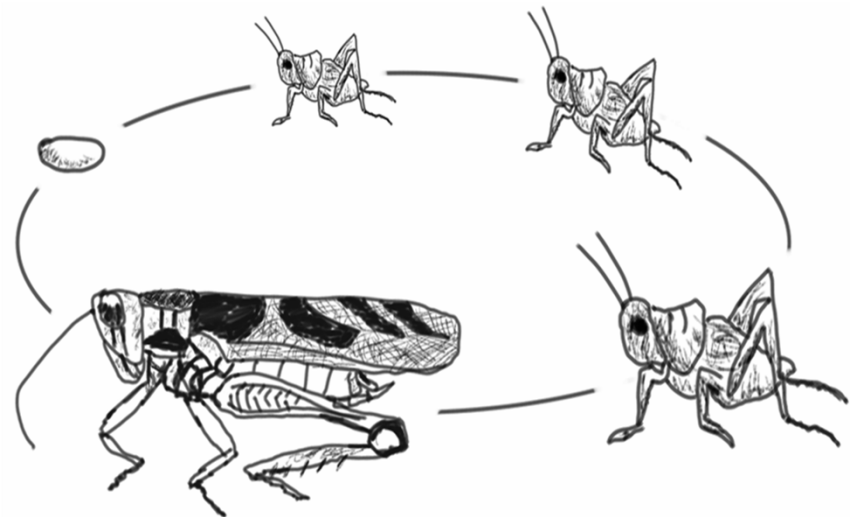
The Pensive Sloth © 2014

## Leafhopper Life Cycle



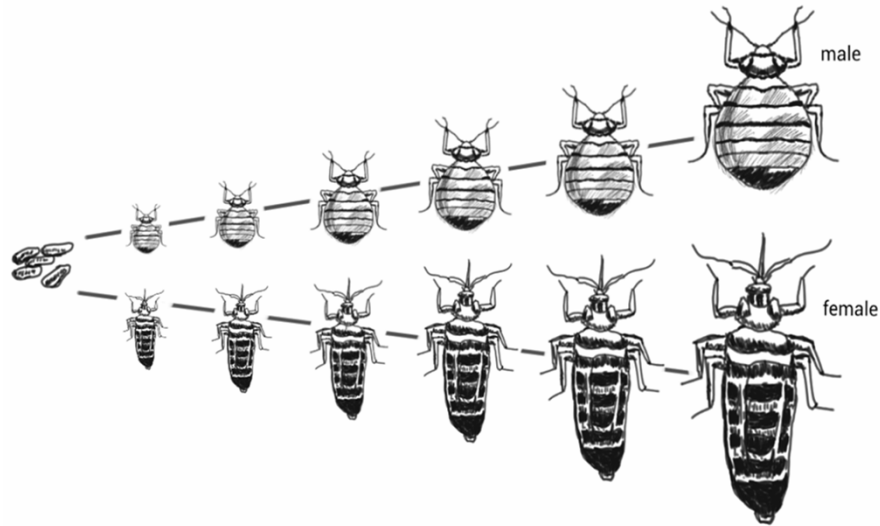
The Pensive Sloth © 2014

## Grasshopper Life Cycle



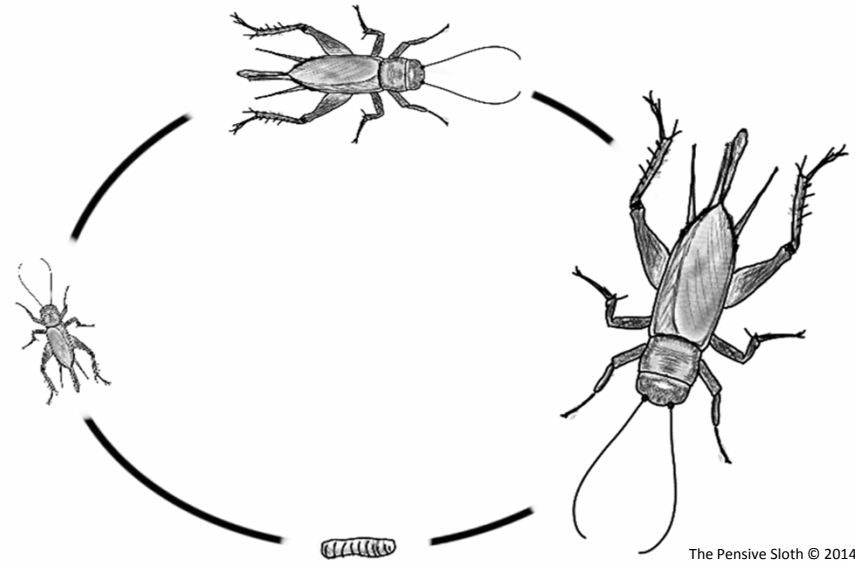
The Pensive Sloth © 2014

## Bedbug Life Cycle



The Pensive Sloth © 2014

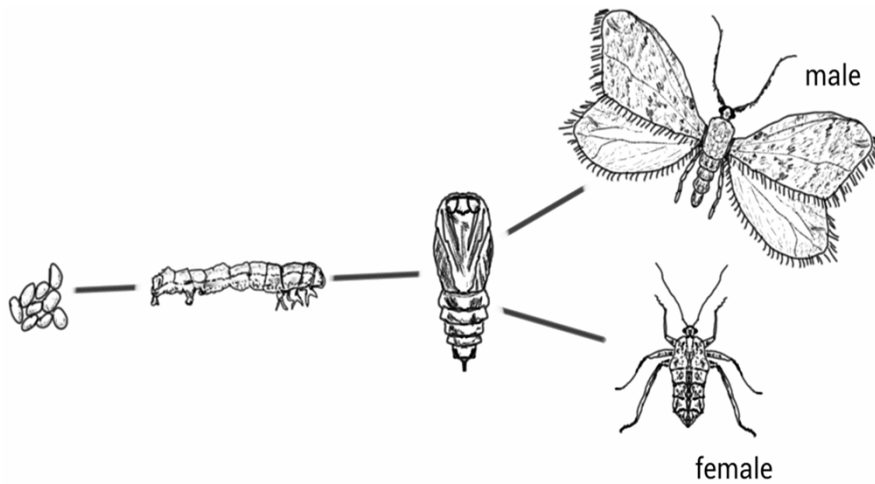
## Cricket Life Cycle



The Pensive Sloth © 2014

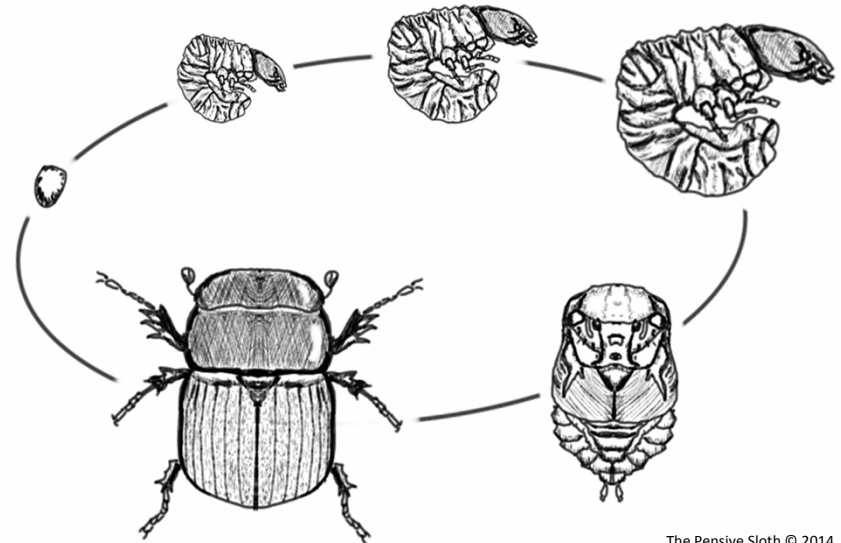
## Fall Cankerworm Moth Life Cycle

\*\*\*NOTE: Adult female of this species is wingless.



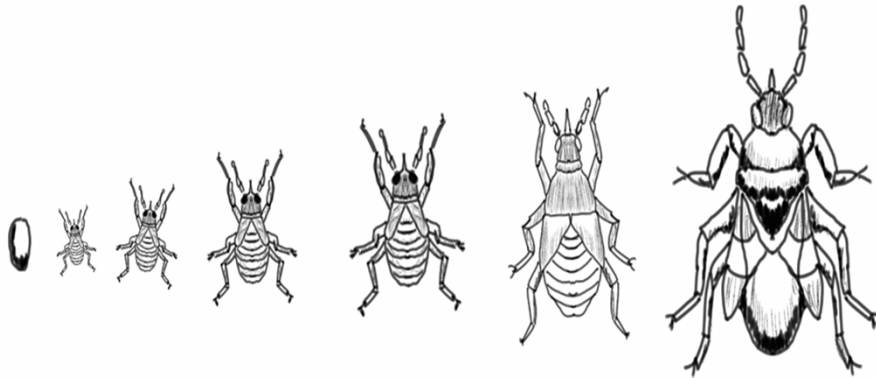
The Pensive Sloth © 2014

## Dung Beetle Life Cycle



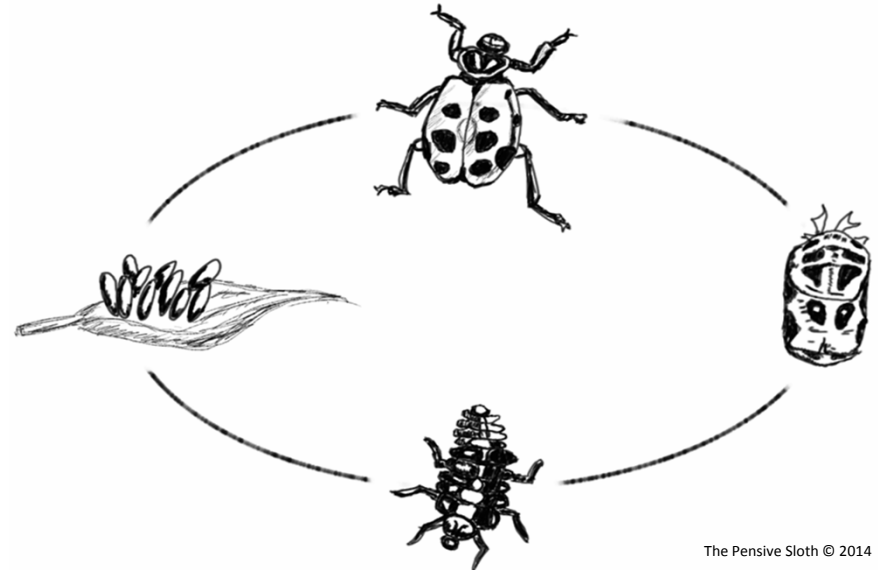
The Pensive Sloth © 2014

## Insidious Flower Bug Life Cycle



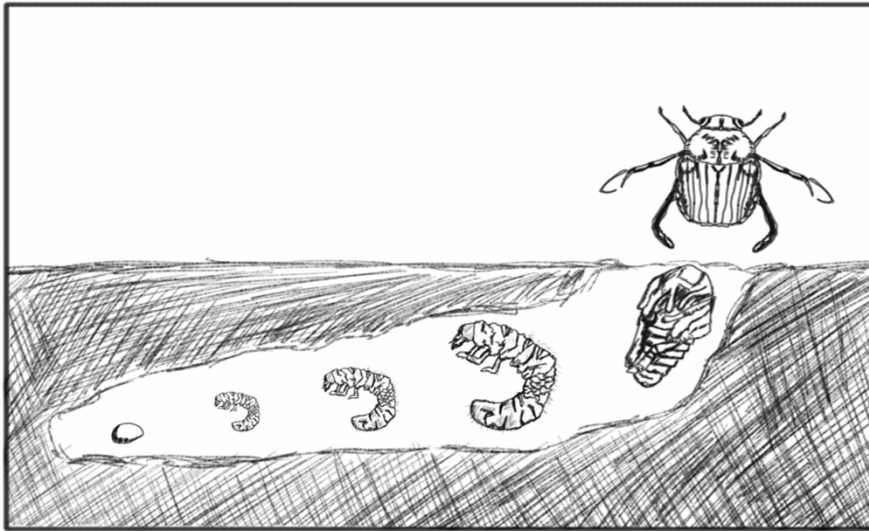
The Pensive Sloth © 2014

## Lady Beetle Life Cycle



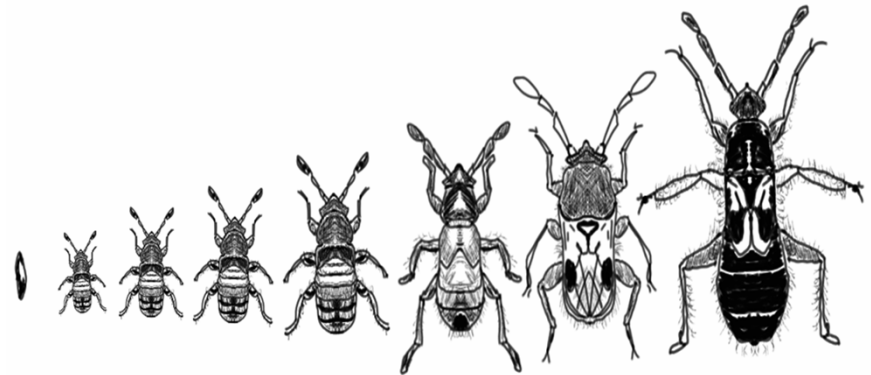
The Pensive Sloth © 2014

## June Beetle Life Cycle



The Pensive Sloth © 2014

## Hairy Chinch Bug Life Cycle



The Pensive Sloth © 2014