

“Inspire with a conference to remember”



## Conferences at Mantra Bell City



**Offering a multitude of indoor and outdoor event spaces, stylish accommodation, gourmet restaurants and extensive facilities, Mantra Bell City is Melbourne's premier conferencing destination.**

### **Expect a contemporary hotel experience**

Mantra Bell City offers premium accommodation and event space in Melbourne's vibrant inner north. Located in an impressive complex, Mantra Bell City offers a comprehensive conference and event centre, as well as a selection of restaurants serving the finest cuisine, and an extensive range of resort-style facilities including a fully equipped gymnasium, sauna and outdoor pool.



### **Bring an ambitious frame of mind**

Mantra Bell City offers the largest event facility in Melbourne's northern suburbs. Mantra Bell City can accommodate functions of up to 500 in a variety of event layouts, spread across 3000sqm of indoor and outdoor space. From the grand ballroom to the purpose-built lecture theatre, Mantra Bell City offers 15 rooms and multiple breakout areas, all supported by excellent facilities and audio-visual technologies.

### **Discover Preston**

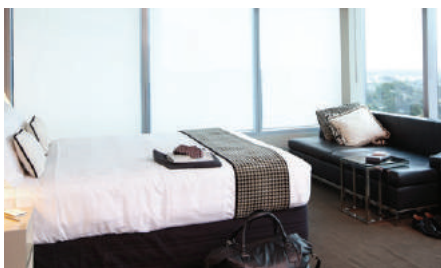
Mantra Bell City is located in the emerging and vibrant suburb of Preston, only 9kms from Melbourne's CBD and 20 minutes from the airport. Mantra Bell City provides an ideal location for both corporate travellers and delegates visiting Melbourne and leisure guests wishing to experience the boutique shopping, dining and culture Melbourne is renowned for.



At Mantra Bell City, the ultra-modern and spacious hotel rooms and apartments are designed with the latest technology and comfort in mind. All rooms feature a kitchenette, business desk, LCD TV with Foxtel and WiFi access, and many offer floor to ceiling city or mountain views.



# Facilities



Located in Melbourne's vibrant inner north, Mantra Bell City is the perfect place to unwind at the end of a busy day.

## Facilities

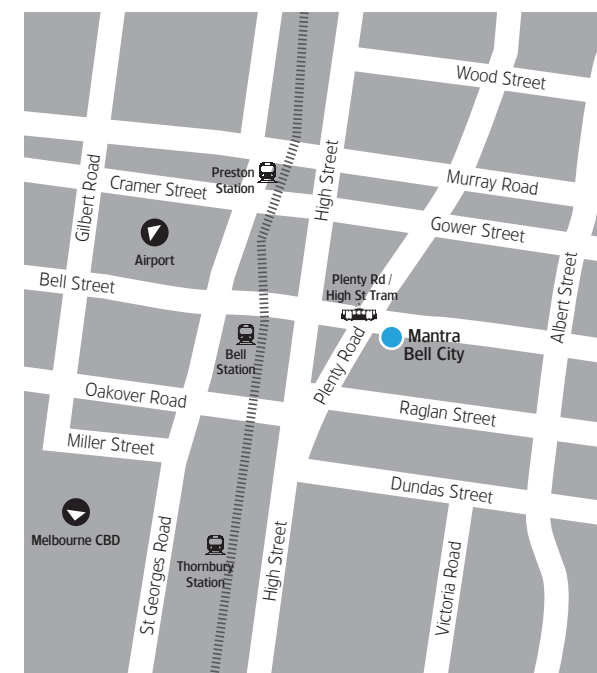
- Outdoor swimming pool
- BBQ area
- Gymnasium
- Sauna
- Games room
- 24-hour reception
- Express check-out
- Secure undercover parking
- Restaurant and bar
- Currency exchange
- Luggage storage
- ATM on site
- Laundry and dry cleaning service
- Meeting and conference facilities
- Safety deposit box
- Business services
- Weekday complimentary local area shuttle
- Convenience store
- Car hire

## Room Features

- Air-conditioning and heating
- LCD TV with cable TV
- Digital alarm clock
- Broadband internet access
- Tea and coffee facilities
- Microwave and toaster
- Mini refrigerator
- Iron and ironing board
- Hair dryer
- In-room WiFi access
- Self-contained kitchenette
- Ensuite bathroom facilities
- Espresso machine (suites)

## Location

- Melbourne Tullamarine Airport: 18.9km
- Preston Market: 1.2km
- Northland Shopping Centre: 2.9km
- High Street: 600m
- Melbourne CBD: 9km
- Royal Melbourne Zoo: 8.9km
- Melbourne Museum: 8.6km
- Melbourne Cricket Ground (MCG): 10.3km
- Federation Square: 11.3km
- Queen Victoria Market: 10.5km
- National Gallery of Victoria: 11.8km
- Crown Casino: 13km



# Conference Venues



Our experienced events team will work with you to design a package to suit your personal style and budget. Our expert onsite team of conference and catering professionals will ensure your event delivery is a success.

## Ballroom

The Ballroom is available as one grand space with its own private pre-function area or can be separated into 3 smaller rooms. Featuring floor to ceiling windows with sunset views, balcony access, private bathroom facilities and direct lift access from the car park.



## East Wing

The East Wing offers 3 modern rooms, Vienna, Dubai and Beijing, that can be combined to cater for up to 200 theatre style, utilised as individual rooms or a combination of the two. East Wing rooms enjoy extensive natural light and a shared breakout or pre-function area that opens out to the courtyard.



## Marquee

Bell City's chandelier adorned Marquee is heated and air-conditioned and ideal for trade shows and launches with its convenient access to hotel facilities and other event spaces. Ample pre-event space is available in the adjoining courtyard and the Marquee has easy access to the New York room and the East Wing for those planning multipurpose events requiring multiple venues.

## New York

The unique L shape of the New York room and abundance of natural light makes it the ideal venue for team building events and conferences, with plenty of space for groups to break apart and work together. The additional space created with this rare floor plan is also perfect for event registration, break outs and catering. New York is available to connect to the Marquee, creating a spacious and light filled catering and exhibition space.

## South Wing

Consisting of the Manhattan, Vancouver, Paris and London rooms and the United Nations Auditorium. Most South Wing rooms overlook a garden terrace and share two reception, welcome or breakout areas. The United Nations Auditorium is one of the few custom built lecture theatres available for use in Melbourne and is ideal for seminars and presentations.

## The Den

The Den has the appeal of your own private party venue with inbuilt bar, dance floor and chill out lounge area. Located on our basement level with its own discreet entry, The Den is the perfect location for a social celebration, post conference or meeting get together.

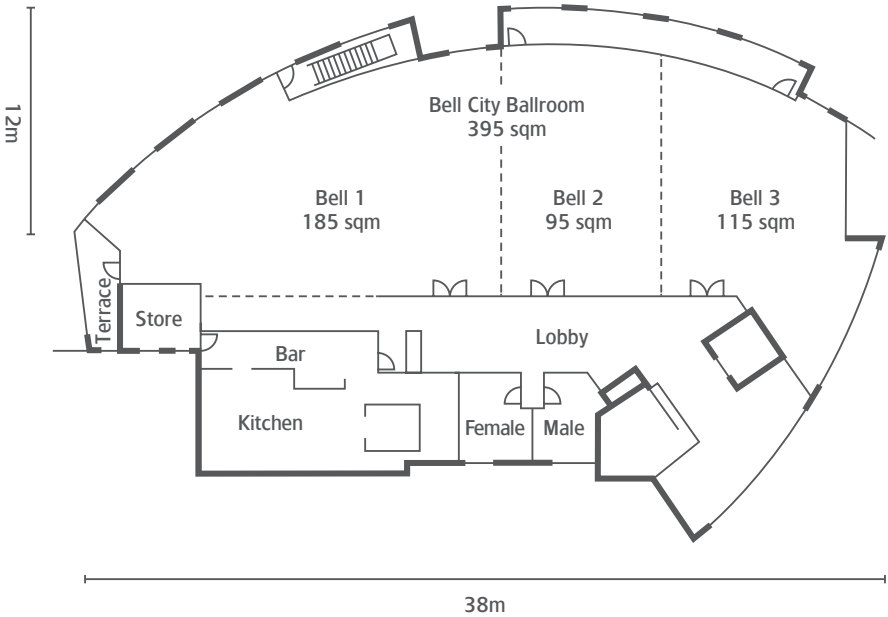
## Conference Rooms and Capacities



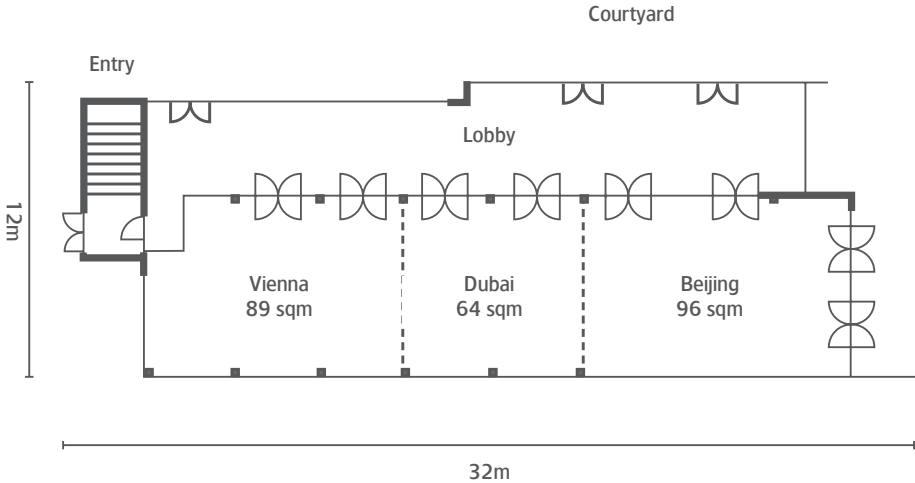
ROOM	Area (sqm)	Ceiling (m)	Theatre	Classroom	Cabaret	U-Shape	Boardroom	Banquet	Cocktail
Bell City Ballroom	395	4	500	200	240	120	-	300	500
Bell 1	185	4	220	110	112	50	-	140	200
Bell 2	95	4	100	50	48	30	-	60	120
Bell 3	115	4	100	100	64	40	-	80	140
East Wing	251	2.5	210	150	136	60	-	170	200
Vienna	89	2.5	70	40	48	27	25	60	60
Vienna/Dubai	153	2.5	120	70	88	45	-	110	110
Dubai	64	2.5	50	30	32	20	20	40	40
Dubai/Beijing	161	2.5	140	70	88	40	-	110	130
Beijing	96	2.5	90	45	56	27	30	60	80
Marquee	273	2.8	320	150	192	60	-	240	400
New York	268	2.5	200	100	120	36	-	150	230
Manhattan	68	3	70	40	48	30	25	60	70
Vancouver	102	3	100	60	32	40	30	40	100
United Nations Auditorium	102	3	99	-	-	-	-	-	-
Paris	64	3	60	36	40	22	20	50	60
Paris/London	151	3	180	90	104	60	40	130	200
London	88	3	90	48	56	40	30	70	100
The Den	180	2.3	30	20	24	10	-	30	110
Poolside Gardens	782	-	-	-	-	-	-	-	350
Conference Gardens	300	-	-	-	-	-	-	-	100
Poolside Terrace	175	-	-	-	-	-	-	80	150
Courtyard	65	-	-	-	-	-	-	-	100

# Conference Rooms and Capacities

## Ballroom

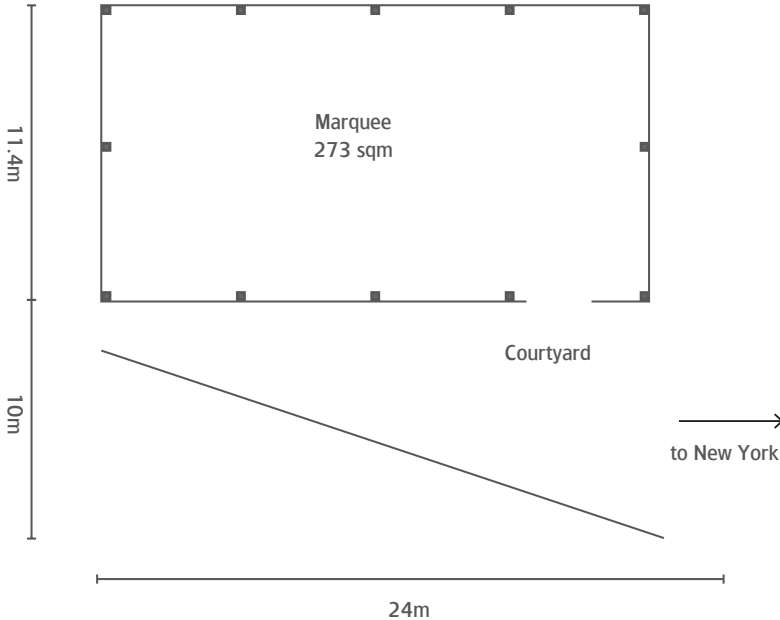


## East Wing

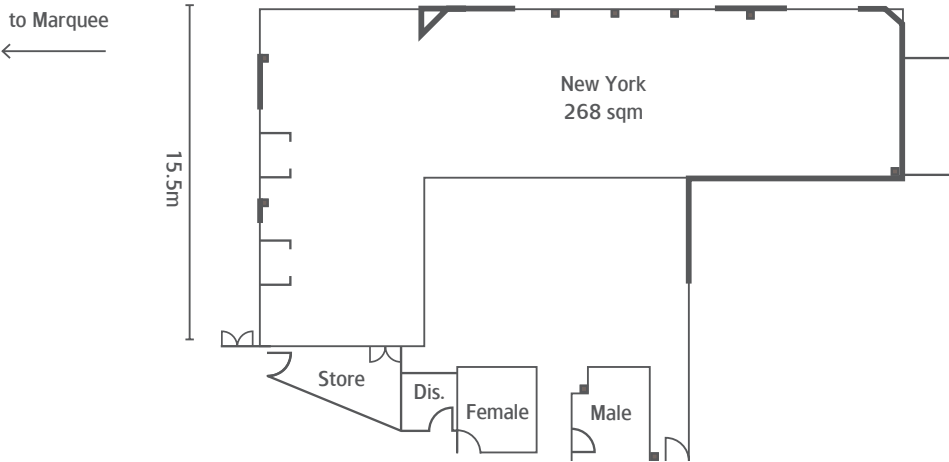


# Conference Rooms and Capacities

**Marquee**

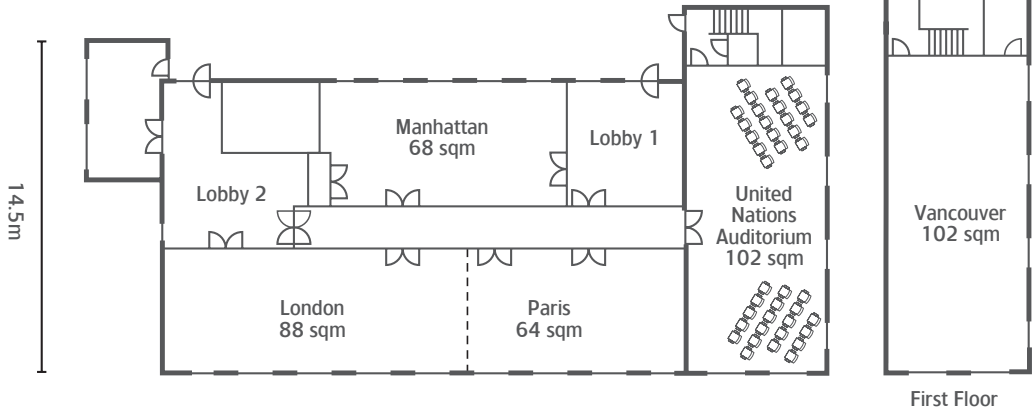


**New York**

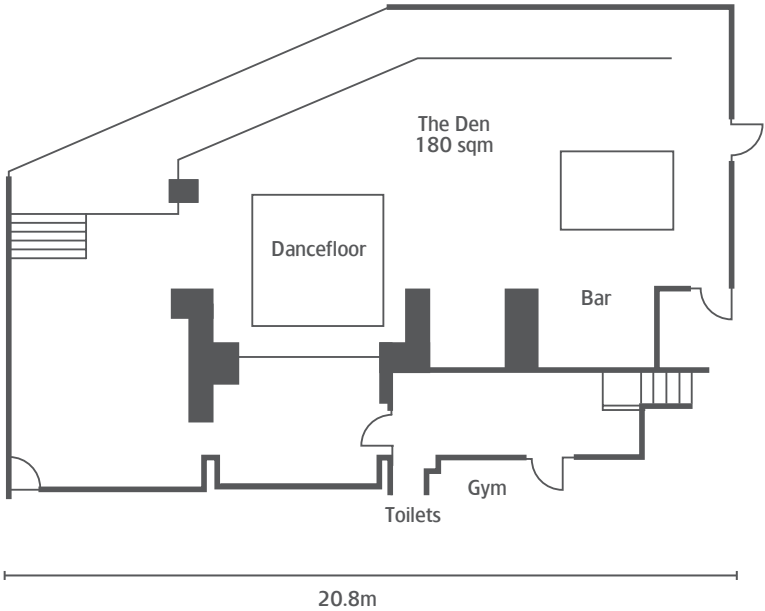


# Conference Rooms and Capacities

## South Wing



## The Den







215 Bell Street  
Preston, Victoria 3072

Phone: (03) 9485 1000  
Email: [bellcity.events@mantra.com.au](mailto:bellcity.events@mantra.com.au)  
[mantra.com.au/bell-city](http://mantra.com.au/bell-city)

mantra  
bell city