



INSTALL GUIDE: AMICUS ATTORNEY

Who should use this Guide:

- Firms who are installing Amicus Attorney for the first time
- Firms who are upgrading from Amicus Small Firm Version 5.5 and above *

* **Converting from Small Firm?** Conversion is a process that is performed AFTER you install Amicus Attorney at your Server. Refer to the *Amicus Small Firm Conversion Guide*. You will require Amicus Professional Services if you are running an earlier version of Small Firm.

Need Assistance? Contact Amicus Technical Support at 800-472-2289 or email us at support@abacusnext.com.

Basics.....	1
Server Install	2
Workstation Install.....	6
Appendix: Installing SQL Server	8

Basics

Installing and configuring Amicus Attorney is a multi-step process. This Guide provides important information about each of the following:

- 1 System readiness
- 2 SQL Server readiness
- 3 Installing Amicus Server (and converting data from an earlier Amicus Version, if applicable)
- 4 Setting up your Amicus environment
- 5 Installing Amicus Workstation on each Firm Member computer

Licensing

See the Online *Administrator Help* available from the Help menu in Amicus Attorney or contact Amicus Sales at 800-472-2289.

Servers and workstations

- **Amicus Application Server** (or **Amicus Server**) – Primary computer on which you install the Amicus software.
- **Amicus Database Server** – Computer running Microsoft SQL Server and hosting your Amicus database. Your Amicus Application and Database Servers may be installed on the same computer (an *embedded install*) or separate computers (a *split install*). A split install is especially useful if your firm already has SQL Server installed and wishes to install the Amicus application on a separate computer. We recommend that these servers reside in the same subnet and domain.

- **Amicus Workstation** – Computer from which Firm Members will be using Amicus. For best performance and full functionality, ensure that these workstations are on your firm's network, within the same domain or workgroup as the Amicus Server.

Your Amicus Server may also be used as a workstation but must remain running and connected to the Internet to ensure accessibility by other Firm Members. Even if you do not intend using your Server as a regular workstation, we recommend that you install Workstation components as some configuration steps require you to be logged in to Amicus at the Server.

SQL Server database

The Amicus Server installation requires a version of Microsoft SQL Server® (with the latest Service Packs) that's supported for use with your version of Amicus Attorney. See the [Amicus Attorney System Requirements](#), available from our website. Both 32-bit and 64-bit editions of SQL are supported. A Runtime-Restricted Use version of SQL Server and sufficient Microsoft Client Access Licenses (CALs) may have been provided to you.

If you already have an existing licensed full-use supported version of SQL Server with sufficient CALs to cover the maximum number of users and/or devices that will access Amicus, you will not need to install SQL Server but you will need an AMICUS instance (see the [SQL Server readiness](#) section).

Standalone environment

You may optionally install and run Amicus on a single computer only, with or without network access.

Installation considerations for larger firms

We recommend that firms with more than 40 Amicus users consult with Amicus Professional Services or use the services of an Amicus Independent Consultant before deciding on their server configuration requirements.

Terminal server network

Amicus can be used in a terminal server environment, which enables users to access their Amicus Office without the need to install Amicus Workstation on their individual computers. We recommend that the Amicus Application Server not be installed on the terminal server computer as performance, security, and third-party links may be affected. Installing Amicus Workstation on a terminal server will automatically install to all terminal server workstations.

Server Install

Step A: Before installing Amicus on your server

System readiness

Ensure that:

- The computer you wish to use as your Amicus Application Server meets the [Amicus Attorney System Requirements](#), available from our website.
- There is sufficient free disk space available on the Amicus Application Server, on the drive where your Temp folder resides. 6 GB is recommended. More might be required, depending on your database size. If a split install, ensure that your Amicus Database Server has at least 2 GB free.
- The latest Windows updates have finished installing.



TIP: Check their status from **Start > Windows Updates**.

- The computer is set to never hibernate or sleep. Do this from **Control Panel > Power Options**. If SQL Server is on a separate computer, ensure that it is also set to never hibernate or sleep.
- ASP.NET is enabled in order to support Amicus printing. In the Windows Control Panel at the server, choose Programs and Features, choose “Turn Windows features on or off” in the left panel, browse to Internet Information Services > World Wide Web Services > Application Development Features, and select the ASP.NET checkbox.
- *If the server is a Domain Controller*, Microsoft recommends that SQL Server be installed on a different computer. For further information, consult Microsoft’s website.
- *If Microsoft SQL Server Management Studio Express is present on the server where SQL Server is to be installed*, remove it using Windows Control Panel > Programs and Features.

SQL Server readiness

Ensure that a supported version of SQL Server is installed and configured on the computer you wish to use as your Amicus Database Server.

- 1 **If you will be using the SQL Server provided with Amicus Attorney**, proceed to install it as instructed in the Appendix to this Guide.

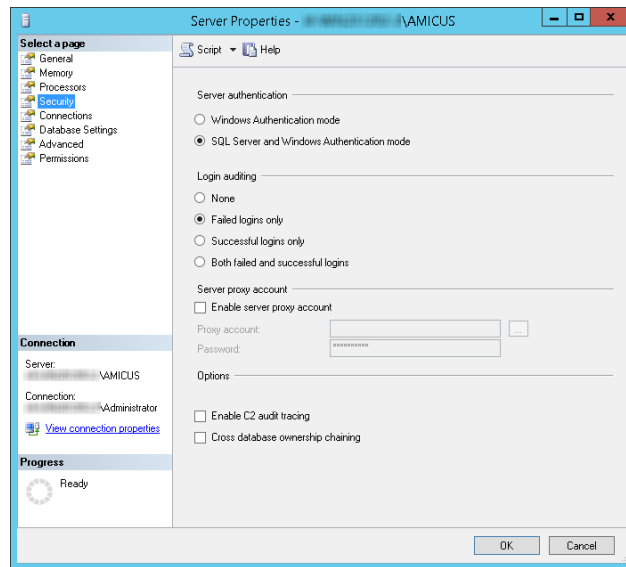
If you will be using a new or existing full-use SQL Server, it is important to install an “AMICUS” named instance of SQL. (This isolates Amicus from any other SQL applications you might have on the server.)

- 2 Ensure that the latest SQL Server updates available from Microsoft are installed to your Amicus instance.



TIP: Consider enabling Microsoft Update to help keep that SQL Server up-to-date.

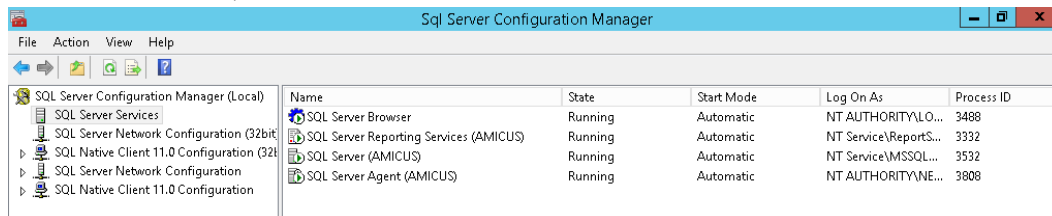
- 3 Ensure that your Amicus SQL instance is configured appropriately. At the computer running SQL Server:
 - Open **SQL Server Management Studio**, connect to your AMICUS instance, and then check that Authentication Mode is set to either SQL or Mixed (which requires you to have a password). In the list at the left, right-click on the SQL Server name and choose **Properties**. Then choose **Security**.



Under “Server authentication”, select the “SQL Server and Windows Authentication mode” option.

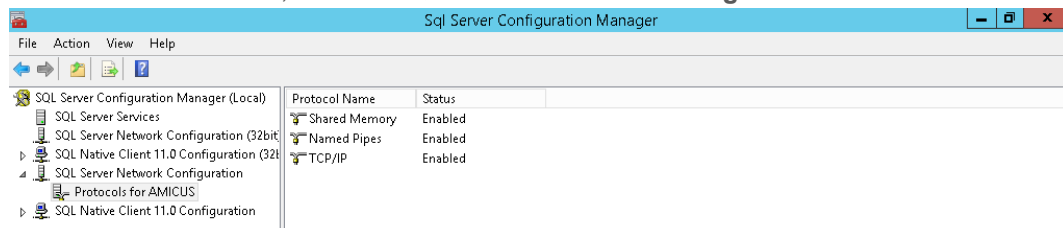
Click OK and enter a SQL Server password if prompted.

- Next, open **SQL Server Configuration Manager**, and ensure that the SQL services are set properly:
- In the list at the left, choose **SQL Server Services**.



For each of the services listed at the right (SQL Server Browser, SQL Server Reporting Services (AMICUS), SQL Server (AMICUS), and SQL Server Agent (AMICUS)), check that Start Mode is set to “Automatic”, and Log On As is set to a user with system administrator privileges (e.g. “LocalSystem”, “NT AUTHORITY”, or “NT Service”). If necessary, double-click a service and edit its setting.

- In the list at the left, choose **SQL Server Network Configuration > Protocols for Amicus**.



In the list at the right, ensure that Named Pipes and TCP/IP are both Enabled.

- 4 Ensure that you have your SQL credentials for your Amicus instance: SQL Server Name (in the format *SQLServerName\InstanceName* such as “myserver\AMICUS”), User Name (typically “sa”), and login password. The SQL Server Name is typically the name of the computer on which SQL Server is installed.

Step B: Installing Amicus Server components

Installing Amicus Attorney on your server will take less than 30 minutes.

- 1** Log onto the computer you wish to use as your Amicus Application Server, as a user with Windows “Administrators” Group rights.
- 2** Shut down all running programs.
- 3** If you have an Amicus Attorney DVD, insert it into the disk drive. The Setup program should start automatically. If not, click the Windows Start button, choose Run, and enter: *[disk drive letter]:\Setup.exe*
Or if you downloaded the DVD image, double-click *setup.exe* in the extracted contents.
- 4** *If a message appears saying that specific version(s) of Microsoft .NET Framework must be installed or enabled in order to support basic Amicus functionality*, complete the following before proceeding:
 - Your Windows operating system might already include the required version(s). Simply enable them as follows:
 - a** Go to Windows Control Panel > Programs and Features.
 - b** Choose “Turn Windows features on or off” in the left panel.
 - c** Select the Microsoft .NET Framework checkbox and click OK.
 - Otherwise, download and install applicable version(s) from the Microsoft Download Center.Then restart the installation of Server components at step 1.

- 5** Follow the onscreen instructions

- 6** A System Check will be run to ensure that your server meets system requirements. If any tests fail, the results are displayed in an Amicus System Check Utility window. (We recommend that you save the results from the File menu on the next window.)

If your server fails any essential requirements, you will not be permitted to proceed with the install—click Exit.

- 7** Install Amicus Server. Follow the onscreen instructions.

- For the Amicus Attorney Database, enter your SQL credentials that you previously noted.
- Enter basic information about the firm and the user who will be automatically set up as the initial Amicus Administrator. Information is required in all fields except Middle Name.

Write down the following information as it will be required to log in successfully after installation:

Firm ID:_____ **User ID:**_____ **Password:**_____

DO NOT INTERRUPT THE INSTALL PROCESS, AND DO NOT RUN OTHER PROCESSES ON THE SERVER DURING THIS PERIOD.

- 8** Log in to Amicus to verify that the application is running properly.
 - Double-click the “Amicus Attorney” icon on your Desktop. Or open Amicus Attorney from your Windows Start menu.
 - In the Amicus Login window, type your User ID if necessary, and your Password.

If you cannot log in successfully, see “Troubleshooting the Server installation” on page 7.

- 9** If applicable, convert your existing Amicus Small Firm database. For instructions, see the [Amicus Small Firm Conversion Guide](#).



Note: You will require Conversion Services if your current version of Small Firm is 5.1.1 or below.

-
- 10** Configure your Amicus environment as appropriate. See the [Setting up your Amicus environment](#) section.
 - 11** The workstation on the Server is automatically installed. For other workstations, go to the [Workstation Install](#) section and follow the instructions.

Step C: Setting up your Amicus environment

Most of your work as an Amicus Administrator can be done from the Office module of Amicus, at any Workstation. For full details on all administrative functions, see the online Administrator Help and various Guides, available from the Help Center in Amicus. You may now prepare Amicus for use:

- 1 From the **Firm Settings** view of the **Office** module, configure:
 - All General Firm Settings, including the Firm Record and Notifications.
 - Document Management settings.
 - All lists according to your firm's needs.
 - All applicable third-party links (including your accounting system and Outlook/Exchange).
 - Amicus Anywhere / Amicus TimeTracker accessibility (if included in your firm's Amicus Subscription or Amicus Advantage Plan). Amicus Anywhere is a browser-based hybrid Cloud solution that provides remote access to a Firm Member's Amicus core data without the need for storing that data in the Cloud.
- 2 From the **Security Profiles** view of the **Office** module, configure access settings according to the needs of your firm.
- 3 From the **User Management** view of the **Office** module, add Firm Members and complete individual Firm Member information, including Admin and Office Access settings.
- 4 If desired, log in as individual Firm Members and configure their preferences.
- 5 When ready, advise users of their individual User ID and Password. (The default User ID for new users is their Full Name, and their default password is "password".)
- 6 *If SQL Server-based Reports or Billing Templates need to be created or edited by a user, ensure that they have an appropriate version of Microsoft Report Builder installed on their workstation. For details of this feature, see the [Using SQL Reporting Services with Amicus](#) guide.*



Important:

- **Remember to license users.** For instructions, see [Administrator Help](#).
 - **Do not delete, rename, or move any of the \AMICUS subfolders or files** that were created during your Amicus Server installation.
 - **If your firm intends to license Amicus Billing for the first time**, we recommend that you run the Billing Consistency Checker before using billing functionality. This will ensure that your bills and billing reports are accurate. The utility checks for Primary Clients and missing Responsible Lawyers on billable files, for example. Refer to the "Getting Started" topic in the [Amicus Billing Administrator Help](#) for this and other important setup steps.
-

Troubleshooting the Server installation

If you need assistance with any of the following procedures, please contact [Technical Support](#).

The Amicus Install Manager log is available on the Server at %temp%\AmicusLogs

If you get a connection failure message after you enter your SQL credentials for a split install:

Ensure that the firewall does not block connections to SQL Server. Either disable the firewall or include the following applications in the firewall's exceptions list:

Under SQL Server 2014

C:\Program Files\Microsoft SQL Server\MSSQL12.AMICUS\MSSQL\Binn\sqlservr.exe

C:\Program Files\Microsoft SQL Server\MSSQL12.AMICUS\MSSQL\Binn\sqlagent.exe

Under SQL Server 2012, the files are under \MSSQL11.AMICUS

If you cannot log in to Amicus (or a third-party application cannot communicate with Amicus) and are running a firewall:

Ensure that the firewall does not block connections to Amicus components and SQL Server. Either disable the firewall or include the following applications in the firewall's exceptions list:

- Amicus Application Server and Workstation:

...\\Amicus\Amicus Attorney Workstation\AmicusAttorney.XWin.exe

...\\Amicus\Amicus Attorney Server\SmartClient\Server\AmicusAttorney.XOL.ServerService.exe

- Amicus Database Server:

Under SQL Server 2014:

C:\Program Files\Microsoft SQL Server\MSSQL12.AMICUS\MSSQL\Binn\sqlservr.exe

C:\Program Files\Microsoft SQL Server\MSSQL12.AMICUS\MSSQL\Binn\sqlagent.exe

Under SQL Server 2012, the files are under \MSSQL11.AMICUS

If the installation was not successful and you need to reinstall:

Complete the following steps to remove any leftover settings or files BEFORE attempting to reinstall Amicus:

- 1** From the Windows Control Panel > Programs and Features function, remove Amicus Attorney Server and Amicus Installation Manager if present in the list.
- 2** Open SQL Management Studio from the Windows Start menu. Expand the Databases item at the left, right-click on each of Amicus and AmicusMedia, and choose Delete.
- 3** In Windows Explorer, browse to the data folder: folder.

Under SQL Server 2014: C:\Program Files\Microsoft SQL Server\MSSQL12.AMICUS\MSSQL\Data

Under SQL Server 2012, the files are under \MSSQL11.AMICUS

Delete the following files if present: Amicus.mdf, Amicus_log.LDF, AmicusMedia_Data.mdf, and AmicusMedia_Log.ldf.

Workstation Install

Before you begin, ensure that:

- **The Amicus Server installation has completed.**
- The workstation meets the hardware and software requirements detailed in the [Amicus Attorney System Requirements](#), available from our website.
- The workstation and Amicus Server are in the same domain or workgroup, and the workstation has access to the Amicus Server.
- All folders in Windows Explorer are set to show file extensions. (This is necessary for the later installation of the Amicus Tasks or Merge Toolbars.)
- *If a computer is shared*, one of the Firm Members must log into their Windows account and then install Amicus Workstation as detailed below. This will automatically install Amicus for all users on that computer.
- *In a terminal server environment*, a single user must log in with rights to install and run applications and then install Amicus Workstation as detailed below. This will automatically install Amicus to all terminal server workstations.

Installing an Amicus Attorney Workstation

The workstation on the Server is automatically installed. Install other workstations as follows.

- 1** Log onto the workstation as a user with Windows “Administrators” or “Power Users” Group rights.
- 2** In Windows Explorer, enter `\\YourAmicusServerName\Install\Workstation` in the Address field, and then double-click `setup.exe` in the folder shown.
- 3** The Welcome dialog appears. Click Next and follow the onscreen instructions.
- 4** *If a message appears saying that specific version(s) of Microsoft .NET Framework must be installed or enabled in order to support basic Amicus functionality*, complete the following before proceeding:
 - Your Windows operating system might already include the required version(s). Simply enable them as follows:
 - a** Go to Windows Control Panel > Programs and Features.
 - b** Choose “Turn Windows features on or off” in the left panel.
 - c** Select the Microsoft .NET Framework checkbox and click OK.
 - Otherwise, download and install applicable version(s) from the Microsoft Download Center. Then restart the installation of the Workstation at step 1.
- 5** When the installation process has completed, log in to Amicus at the workstation.
- 6** A prompt to automatically add Amicus to your Windows Firewall’s exceptions list might appear. Click OK.
- 7** A prompt might appear, saying that a Workstation update is available and asking whether to apply it now. Click OK. If additional prompts appear, click Run. Wait for the update process to complete.
- 8** If you intend on leaving Amicus running overnight at the Workstation, ensure that the computer is set to never hibernate or sleep. Do this from Control Panel > Power Options.

Using Amicus Attorney for the first time

After logging in to Amicus, go to the Office module. From there you can set your personal Preferences so that Amicus best meets your needs, in particular:

- From **General > My Profile**, click **Edit**. Adjust your personal information if necessary, and then click Office Access to change your initial Password for security reasons.
- Configure your Document Assembly settings and install Amicus Tasks Toolbars as required. For template merge functionality and other Toolbar integration, ensure that your firewall does not block Microsoft Office applications (Word, Excel, and Outlook) or Corel WordPerfect, as appropriate.
- With the guidance of your Amicus Administrator, install and set up any third-party Links (Exchange/Outlook E-mail, etc.) you might wish to use.

You can safely explore the many features that Amicus offers from the Tutorial Office. Choose **Open Tutorial** in the Office module. Don't forget to return to your Office when you are ready to start using Amicus.

For detailed instructions and videos on using the many features of Amicus, including setting your personal preferences, see the [User Help](#) available from the **Help** menu in Amicus.

Appendix: Installing SQL Server

This Appendix covers installing SQL Server for 2014 and 2017.

- [SQL 2014](#)
- [SQL 2016 or a higher version](#)
- [Scheduling a Database Backup](#)

SQL 2014

These instructions are applicable if you have chosen to install SQL Server provided to you for use with Amicus Attorney.

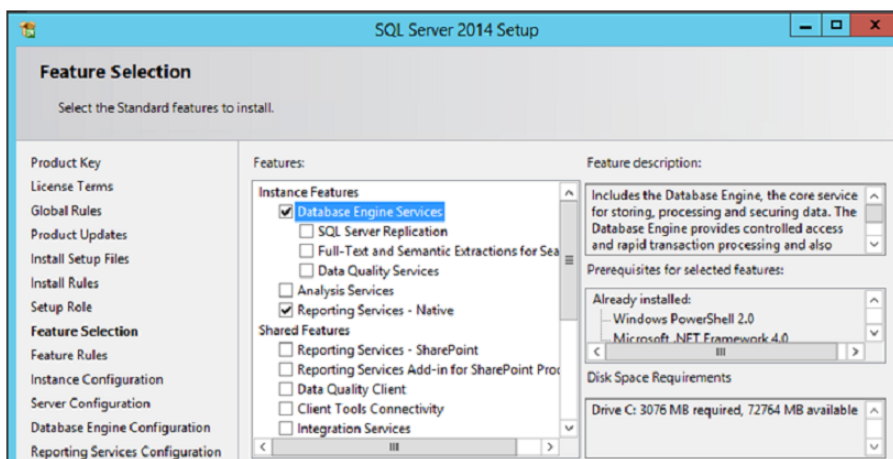
SQL Server must be installed on your Database Server **prior** to installing Amicus Server. See the “SQL Server readiness” section on page 3. If you were provided with a 64-bit edition of SQL Server but require a 32-bit edition, please contact Customer Care.

INSTRUCTIONS: Below are basic instructions for installing SQL Server. Full general instructions are available onscreen during the install.

- 1 Log onto the computer you wish to use as your Amicus Database Server, as a user with Windows “Administrators” Group rights. This may be a different computer than your Amicus Application Server.
- 2 Insert “SQL Add On” DVD into the disk drive. The Setup program should start automatically. If not, click the Windows Start button, choose Run, and enter *[disk drive letter]: \setup.exe*
- 3 At the end of this preliminary install, you might be prompted to restart the computer. To resume the installation, insert DVD into the disk drive again.
- 4 In the SQL Server Installation Center screen, click Installation at the left, and then click the “New SQL Server stand-alone installation...” option at the right.

The SQL Server Setup wizard starts. Accept the default settings in the subsequent dialogs, **EXCEPT:**

• Feature Selection



Choose the following Instance Features:

- ☒ Database Engine Services
- ☒ Reporting Services - Native

Choose the following Shared Features:

- ☒ Management Tools – Basic
- ☒ Management Tools – Complete

• Instance Configuration

Instance Configuration

Specify the name and instance ID for the instance of SQL Server. Instance ID becomes part of the installation path.

Product Key
License Terms
Global Rules
Product Updates
Install Setup Files
Install Rules
Setup Role
Feature Selection
Feature Rules
Instance Configuration

☐ Default instance

☒ Named instance:

Instance ID:

SQL Server directory:

Reporting Services directory:



Important: Select “Named instance” option and enter AMICUS

Failure to do this might affect other applications you have running under SQL.

• Server Configuration

Server Configuration

Specify the service accounts and collation configuration.

Product Key
License Terms
Global Rules
Product Updates
Install Setup Files
Install Rules
Setup Role
Feature Selection
Feature Rules
Instance Configuration
Server Configuration

Service Accounts Collation

Microsoft recommends that you use a separate account for each SQL Server service.

Service	Account Name	Password	Startup Type
SQL Server Agent	NT Service\SQLAgent\$A...		Automatic
SQL Server Database Engine	NT Service\MSSQL\$AMI...		Automatic
SQL Server Reporting Services	NT Service\ReportServer...		Automatic
SQL Server Browser	NT AUTHORITY\LOCAL ...		Automatic

On the Service Accounts tab, ensure that the SQL Server Agent, SQL Server Database Engine, SQL Server Reporting Services, and SQL Server Browser, services have Account Name set to a user with system administrator privileges (e.g. “LocalSystem”, “NT AUTHORITY” or “NT Service”).

Also ensure that these services have Startup Type set to “Automatic”.

• Database Engine Configuration

Database Engine Configuration

Specify Database Engine authentication security mode, administrators and data directories.

Product Key
License Terms
Global Rules
Product Updates
Install Setup Files
Install Rules
Setup Role
Feature Selection
Feature Rules
Instance Configuration
Server Configuration
Database Engine Configuration

Server Configuration Data Directories FILESTREAM

Specify the authentication mode and administrators for the Database Engine.

Authentication Mode

☐ Windows authentication mode

☒ Mixed Mode (SQL Server authentication and Windows authentication)

Specify the password for the SQL Server system administrator (sa) account.

Enter password:

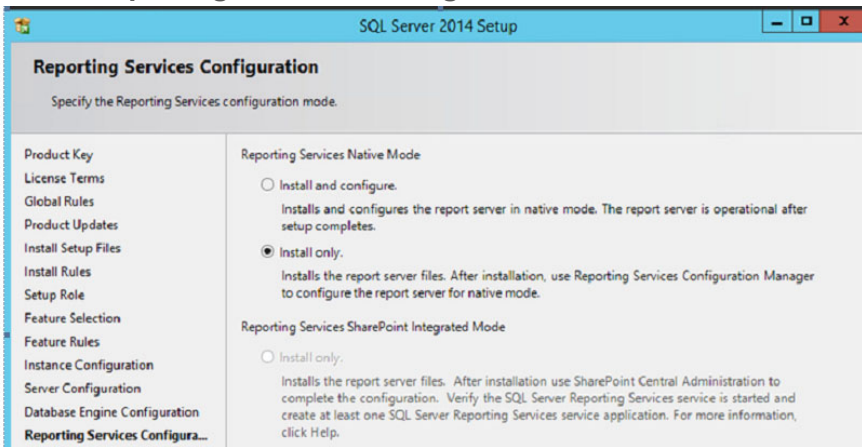
Confirm password:

Specify SQL Server administrators

On the Server Provisioning tab, select Mixed Mode authentication mode and enter a SQL Server password. (**You'll need to use this password later, during the Amicus application installation.**)

Click Add Current User or click Add and specify a SQL Server administrator.

- **Reporting Services Configuration**



Important: In the Reporting Services Native Mode section, select the “Install only” option.

Follow the on-screen instructions to complete the install.

5 Return to page 3 of this Guide and complete the “SQL Server readiness” procedure.

SQL 2016 or a higher version



Warning: A scheduled backup cannot be performed if you are using SQL 2016 or a higher version. You must manually schedule a [Database Backup](#).

These instructions are applicable if you have chosen to install SQL Server 2016 or a higher version. SQL Server must be installed on your Database Server **prior** to installing Amicus Server. See the “SQL Server readiness” section on page 3. If you were provided with a 64-bit edition of SQL Server but require a 32-bit edition, please contact Customer Care.



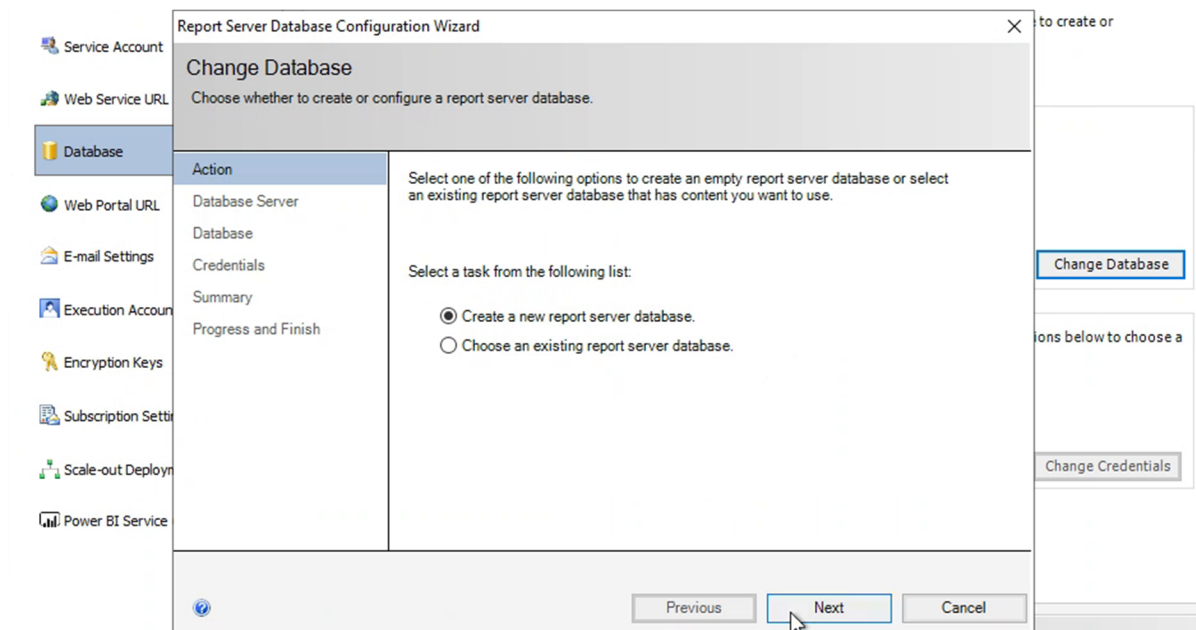
Note: SSRS (SQL Server Reporting Service) needs to be installed as well, but it can be done before or after Amicus Attorney is installed.



Important: The following instructions must be done after Amicus Attorney is installed as the SQL login “AmicusUser” must exist in the SQL server.

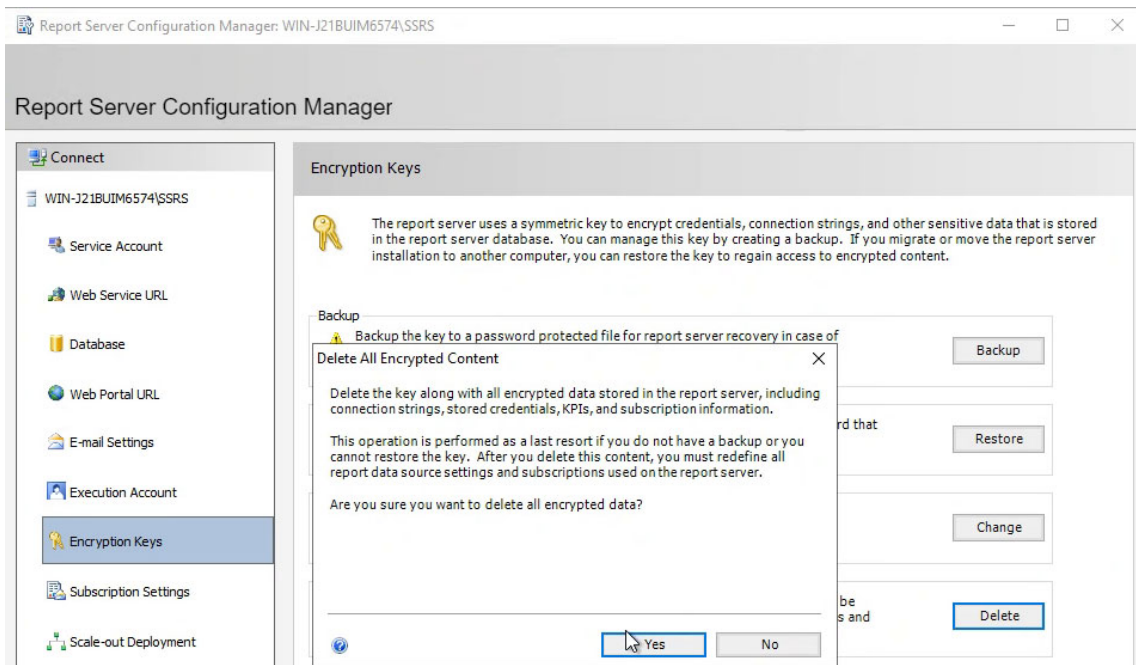
Below are basic instructions for installing SQL Server 2017. Full general instructions are available onscreen during the install.

- 1 Run **Report Server Configuration Manager**.
- 2 Select **Database** from the left navigation pane, and click **Change Database**, to manually create a **Report Server Database**.



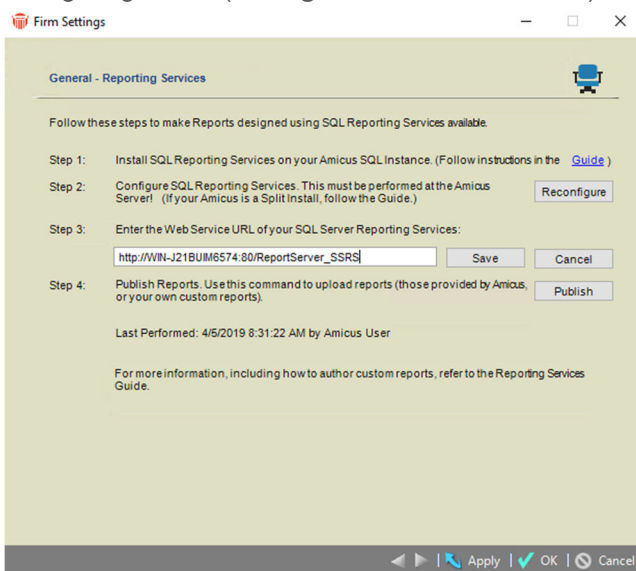
- Click **Next**, there will be 2 prompts for credentials, use **AmicusUser** for both.

- 3 In the **Report Server Configuration Manager**, select **Encryption Keys** from the left navigation pane.

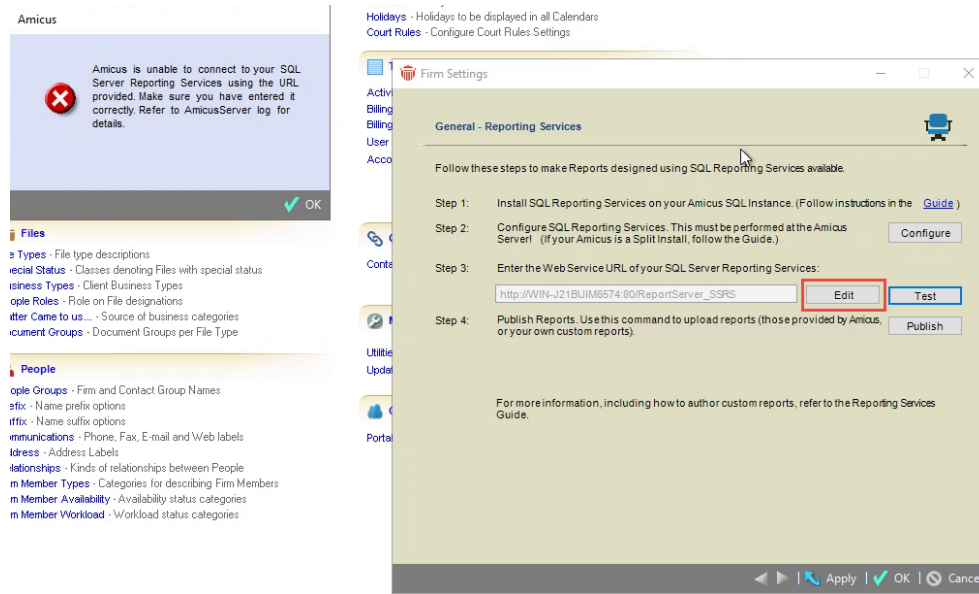


- A prompt displays click **Yes** to **Delete All Encrypted Content**.

- 4 Using Amicus, navigate to **Firm Settings -> Reporting Services**. Follow the usual process for configuring SSRS (**Configure -> Test -> Publish**).



- 5 If you encounter an issue during publishing reports (error “URI is empty”), click **Edit** in **Step 3** on the **Firm Settings** screen, and click **Save**.

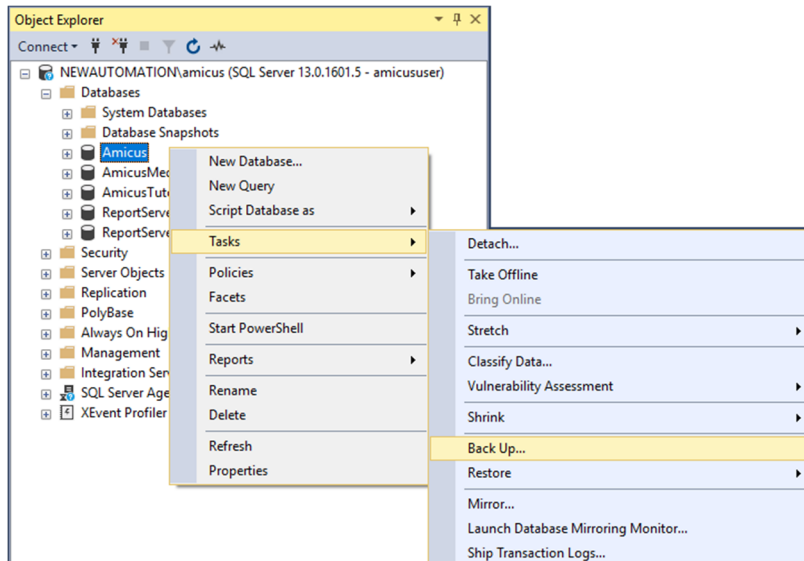


- Your reports should publish successfully.

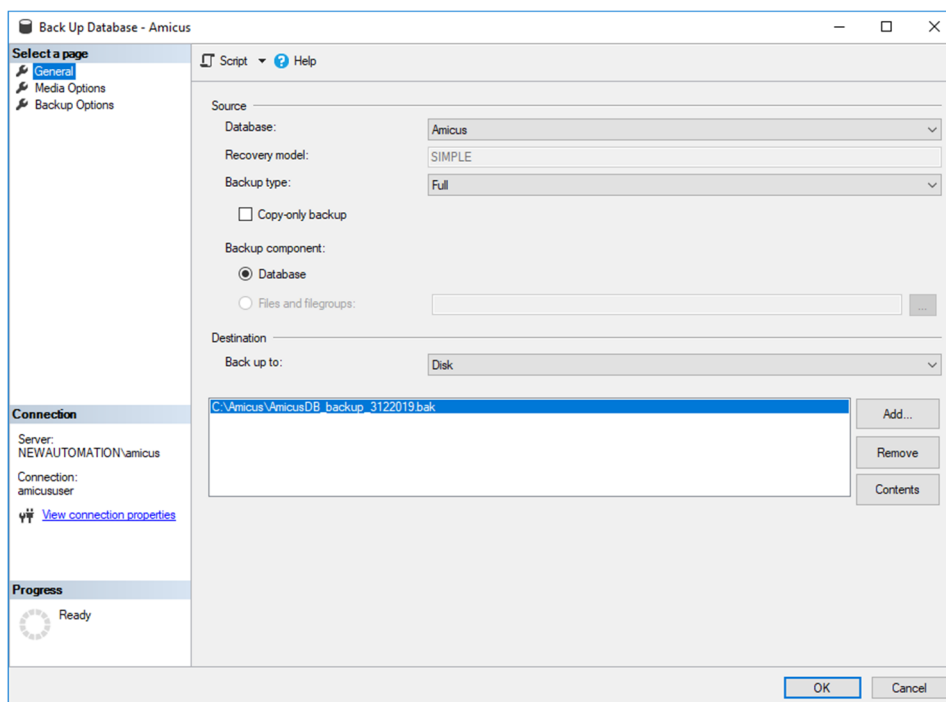
Scheduling a Database Backup

To schedule a database backup operation start SQL Server Management Studio in SQL Server 2016 or a higher version:

- 1 In the **Connect to Server** dialog box, enter the appropriate values in the **Server** type.
- 2 Expand **Databases** in **Object Explorer** and right-click the database that you want to back up.

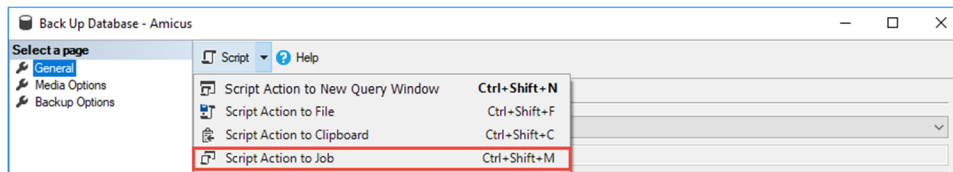


- 3 Select **Tasks > Back Up** from the pop-up menus to display the **Back Up Database – DatabaseName** dialog box.

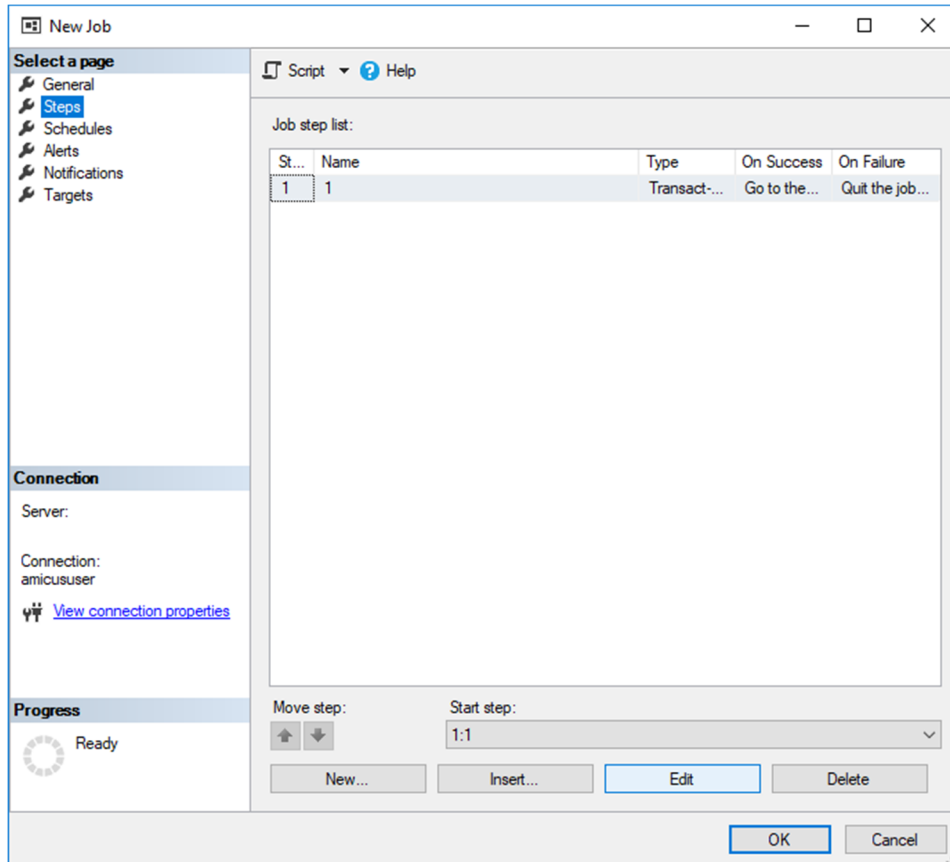


- In the **Source** section, select the name of the backup set from the **Database** field drop-down list.
- In the **Destination** section, select a destination from the **Back up to** field drop-down list and enter a path and a file name in the textbox, then click **Add**.

- 4 Select **Script** from the taskbar to display the **Script** pull-down menu and select **Script Action to Job**.



- 5 In the **New Job** dialog box that appears, select **Steps** from the left pane.

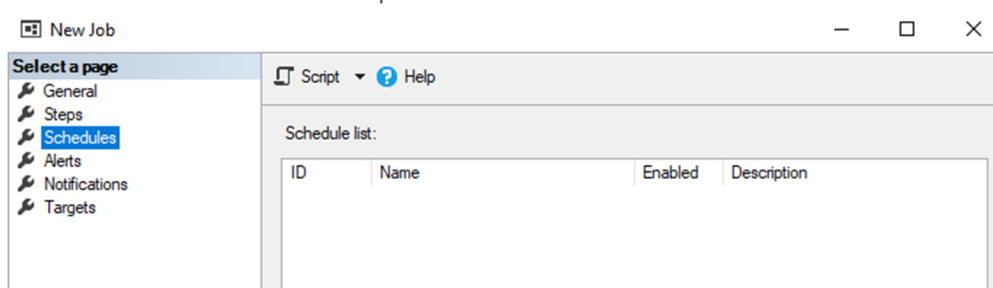


- Click **Edit** if you want to change the job parameters.



Note: You can see the backup command in the **Job Step Properties – 1** dialog box.

- 6 Select **Schedules** from the left pane.



- 7 Click **New** to display the **New Job Schedule** dialog box, enter the job name in the Name box, specify the job schedule.

New Job Schedule

Name:

Schedule type: **Recurring** ☒ Enabled

One-time occurrence
Date: 2019-06-04 Time: 9:09:56 AM

Frequency
Occurs: **Weekly**
Recurs every: 1 week(s) on
☐ Monday ☐ Wednesday ☐ Friday ☐ Saturday
☐ Tuesday ☐ Thursday ☒ Sunday

Daily frequency
☒ Occurs once at: 12:00:00 AM
☐ Occurs every: 1 hour(s) Starting at: 12:00:00 AM Ending at: 11:59:59 PM

Duration
Start date: 2019-06-04 ☐ End date: 2019-06-04 ☒ No end date

Summary
Description: Occurs every week on Sunday at 12:00:00 AM. Schedule will be used starting on 2019-06-04.

OK Cancel Help



Note: To configure alerts or notifications click **Alerts** or **Notifications** in the left pane.

- 8 Click OK two times, the following message displays under **Progress**:

Back Up Database - Amicus

Select a page: **General** Media Options Backup Options

Script Help

Source
Database: Amicus
Recovery model: SIMPLE
Backup type: Full
☐ Copy-only backup

Backup component:
☒ Database
☐ Files and filegroups:

Destination
Back up to: Disk

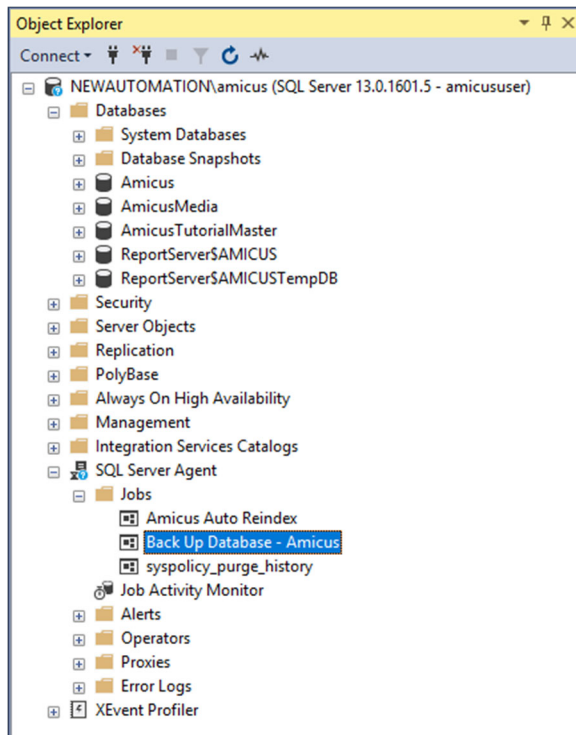
C:\Amicus\AmicusDB_backup_3122019.bak Add... Remove Contents

Connection
Server: NEWAUTOMATION\amicus
Connection: amicususer
[View connection properties](#)

Progress
☒ Scripting completed successfully.

OK Cancel

- 9 To verify the backup job, expand **SQL Server Agent** in **Object Explorer**, then expand **Jobs**.



Important: When you verify the backup job, the **SQL Server Agent** service must be running.



AbacusNext
Phone: 800-472-2289
416-977-6633

www.abacusnext.com
info@abacusnext.com

Copyright © 2020 AbacusNext. All rights reserved.

AMICUS and AMICUS ATTORNEY are registered trademarks, and AMICUS ANYWHERE, AMICUS BILLING, and AMICUS TIMETRACKER are trademarks, of AbacusNext..

All other trademarks referenced are the property of their respective owner. AbacusNext disclaims any proprietary interest in trademarks other than its own.

January 2022