



Install Instructions for SINDA/FLUINT and Thermal Desktop (Version 6.1)

This installation process will install SINDA/FLUINT and Thermal Desktop, which includes RadCAD, FloCAD, and TD Direct. These modules are only activated with the appropriate license files.

Before Installing

1. Verify your computer meets our [System Requirements](#).
2. Ensure the person performing the installation has administrator access.
3. Prior to installing, turn off User Account Control through the Windows Control Panel and restart the computer.

Prerequisite Software

SINDA/FLUINT requires the Intel Fortran compiler to be installed and Thermal Desktop requires AutoCAD to be installed. The Intel Compiler also requires either Microsoft Build Tools 2019 or Visual Studio (Professional or Community version) to be installed.

1. Autocad: Verify Autocad has been installed on the computer. Open it at least once to verify its functionality and that it is licensed properly.
2. Intel oneAPI HPC Toolkit: Verify an Intel Visual Fortran (IVF) compiler has been installed which meets CRTech's [System Requirements](#).
 - a. If the compiler has not been installed, please install the latest version of Intel oneAPI HPC Toolkit for Windows. Here is a link to the [Intel oneAPI HPC Toolkit installation instructions](#) for use with CRTech software.

3. If you have purchased TD Direct, verify SpaceClaim is installed on the computer. Open it at least once to verify its functionality and that it is licensed properly.

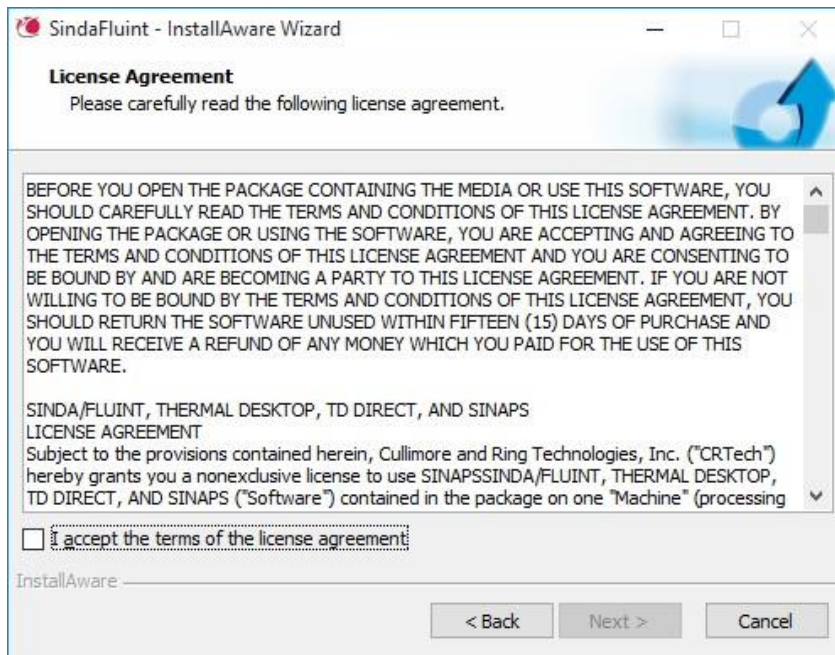
Download Required Files

The user must be logged in the CRTech website to access the following links.

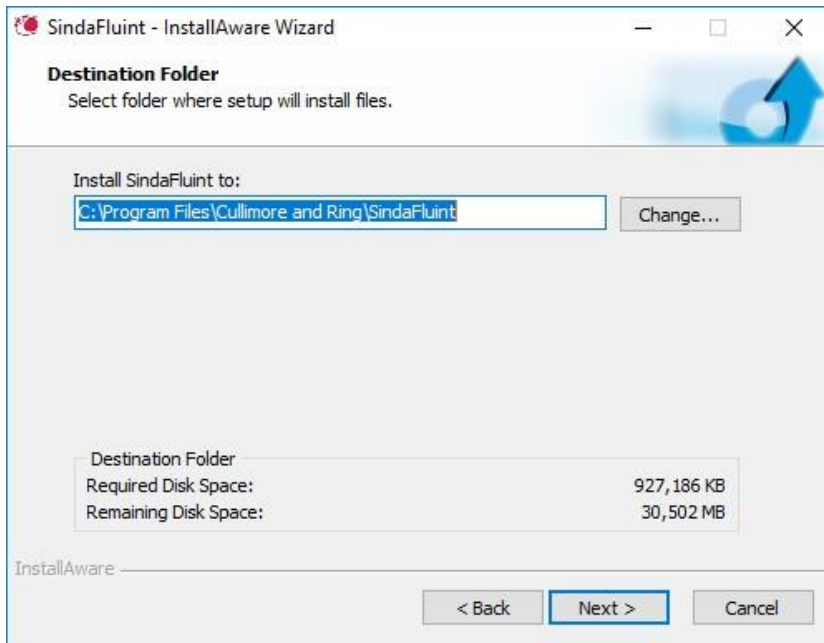
1. SINDA/FLUINT Installer – Available from our [Product Download](#) page.
2. Thermal Desktop Installer – Available from our [Product Download](#) page

Install SINDA/FLUINT

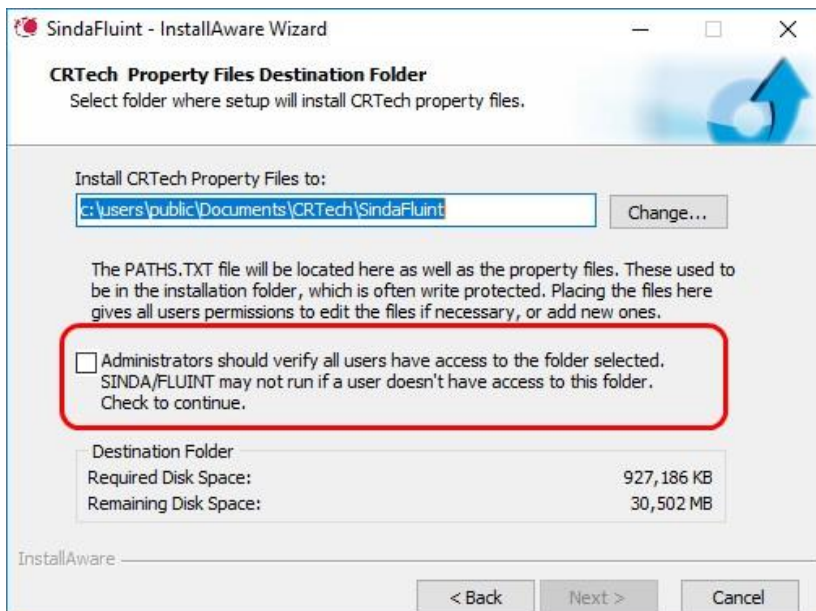
1. Close any other applications you may have running
2. Double-click on the SINDA/FLUINT installer: SindaFluint[version number]N_64.exe
3. Review the license agreement. Check the box to accept the agreement and then click “Next.



4. The program will prompt you to define the location where SINDA/FLUINT is to be installed.



5. The next screen defines where the fluid property files are to be installed. (Versions prior to 6.0 do not have this feature.) By default these files are placed in the Users\Public\Public Documents\CRTech\SindaFluint folder making it available to all users. If a different folder is selected during the install, verify it is accessible by all users.



6. Continue through the install prompts. When the installer is done, click Finish

Install Thermal Desktop

1. Close any other applications you may have running

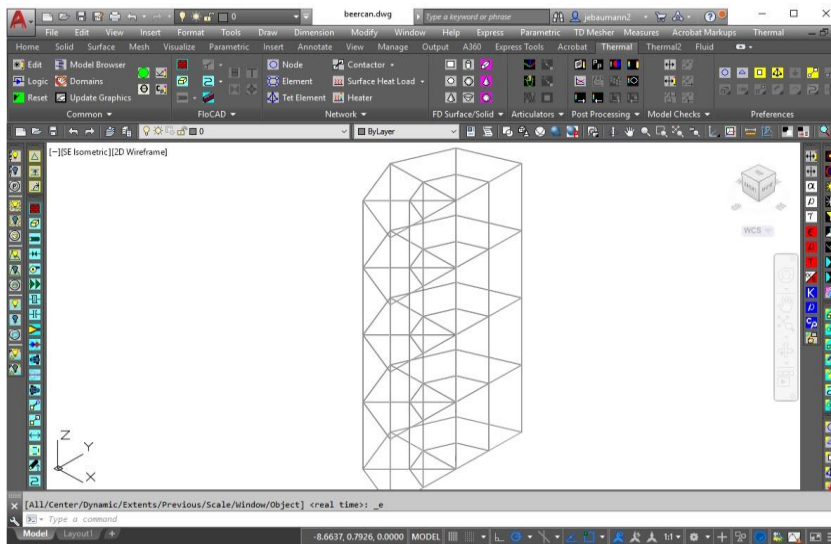
2. Double click on the Thermal Desktop installer: ThermalDesktopAcad[version number]_64.exe
3. Similar to the SINDA/FLUINT installation, the program will prompt you for directories and paths. The default location is Users\Public\Documents\CRTech\Thermal Desktop. If you do not use the default location, make note of the location you define for later use.
4. When the installer is done, click Finish

Install CRTech Licenses

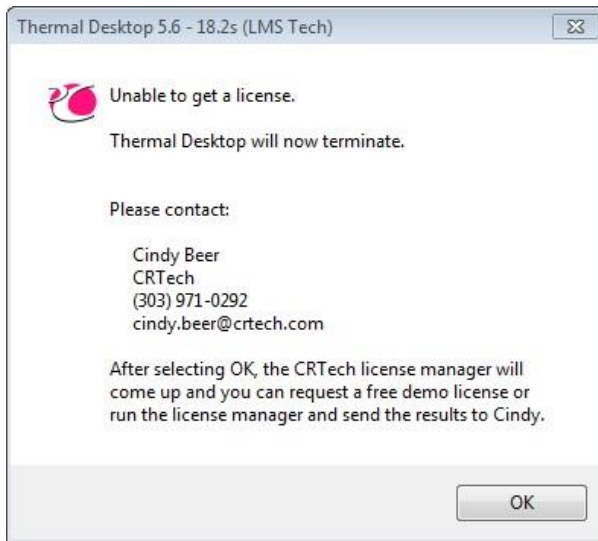
See [License Install Instructions](#) to install CRTech licenses

Verify Thermal Desktop Installation and Licensing

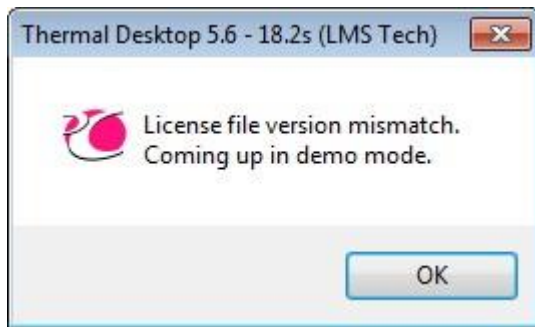
1. Open Windows Explorer and browse to location of the Thermal Desktop install test files (default is C:\Users\Public\Public Documents\CRTech\ThermalDesktop).
2. Right click on the file beercan.dwg and select “Open With”, then select “Choose another app”. Select AutoCAD DWG Launcher, check the box to always use this application.
3. The test model should open in AutoCAD and will appear similar to the graphic below. Depending on your exact version of AutoCAD and Thermal Desktop, the ribbons and toolbars may vary. If you see the half cylinder, continue to the next step.



If you see the error message indicating “Unable to get a license” as shown below, you may not have installed the license properly or you have not installed the USB key for a donglebased license. Look in the Thermal Desktop installation directory (C:\Program Files\Cullimore and Ring\Thermal Desktop\) and verify there is a file called radcad.lic.



If you get an error window as shown below, your license file does not match the installed version of Thermal Desktop.

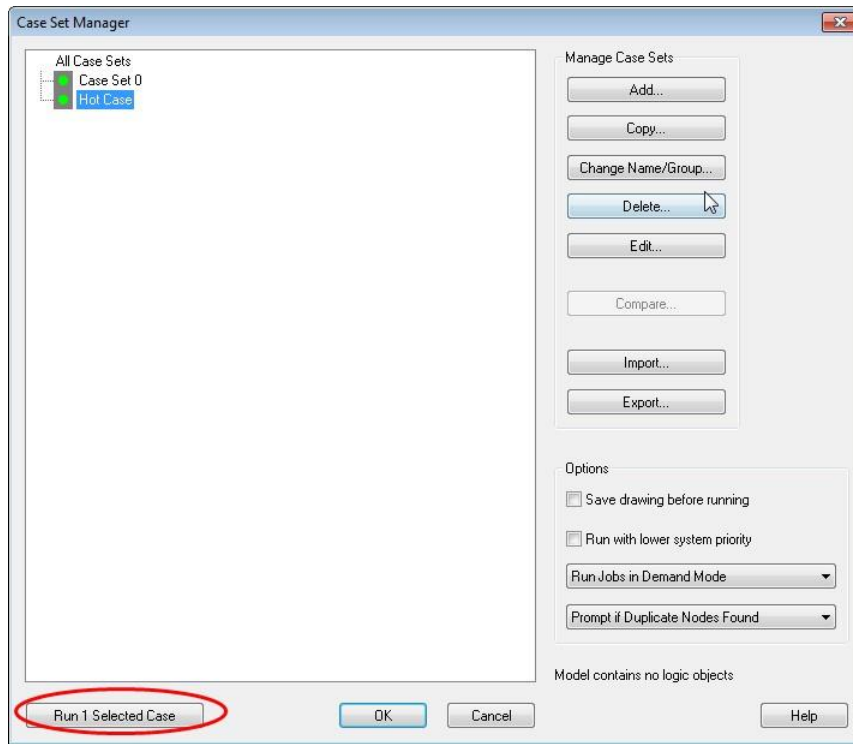


If you need new licenses, please see the [License Install Instructions](#) and follow the steps to Request Licenses. If you see a different error, or cannot resolve the issue, follow the steps in the License Install Instructions to Run a License Report.

4. If the model file opened, click on the green circle icon (Thermal > Case Set Manager)



to open the Case Set Manager dialog shown below. Click on “Hot Case” in the left panel (it should turn blue when highlighted), then click on the [Run 1 Selected Case](#) button in the lower left corner of the window.



After you click the Run button, a SINDA/FLUINT Processor Status window will appear on the screen followed by the message box shown below stating “Successful completion of processor.” If you see this window, Thermal Desktop and SINDA/FLUINT are installed and working properly.

If you get an error message, please run a License Report as outlined in the [License Install Instructions](#).

Supporting Materials

View our online [Getting Started Guide](#) for additional learning resources.