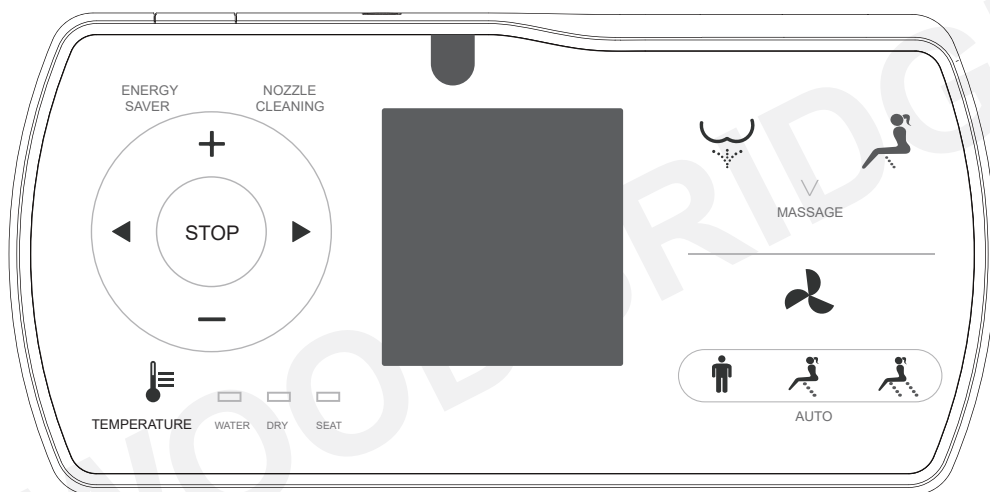


INSTALLATION AND USER MANUAL

WOODBIDGE®

Remote Control Illustration



Thank you for choosing our product. Please read the instructions carefully before installation and keep it available for future maintenance or reference.



SCAN ME

Customer Service Phone: 562-229-0088. (Monday - Friday 9 AM - 5 PM Pacific Time)

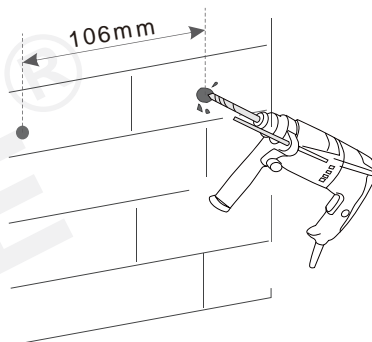
Or Email: help@woodbridgebath.com

Remote control installation

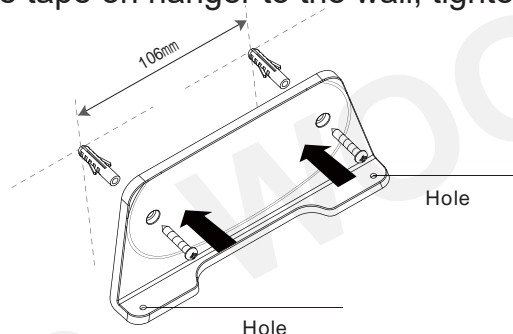
Remote control hanger installation

(1) Drill two holes, which are parallel to the floor, on the wall with depth of 35mm, and center distance between two holes of 106mm.

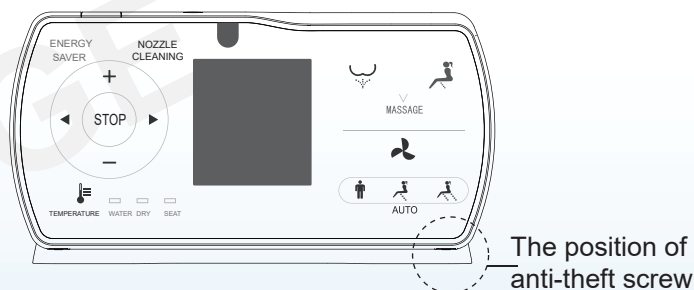
Make sure end-user be able to reach the remote control when sitting on the seat.



(2) Insert expansion tube into the hole on the wall, install the hanger to the wall with a screw, and paste the double faced adhesive tape on hanger to the wall, tighten the screw.

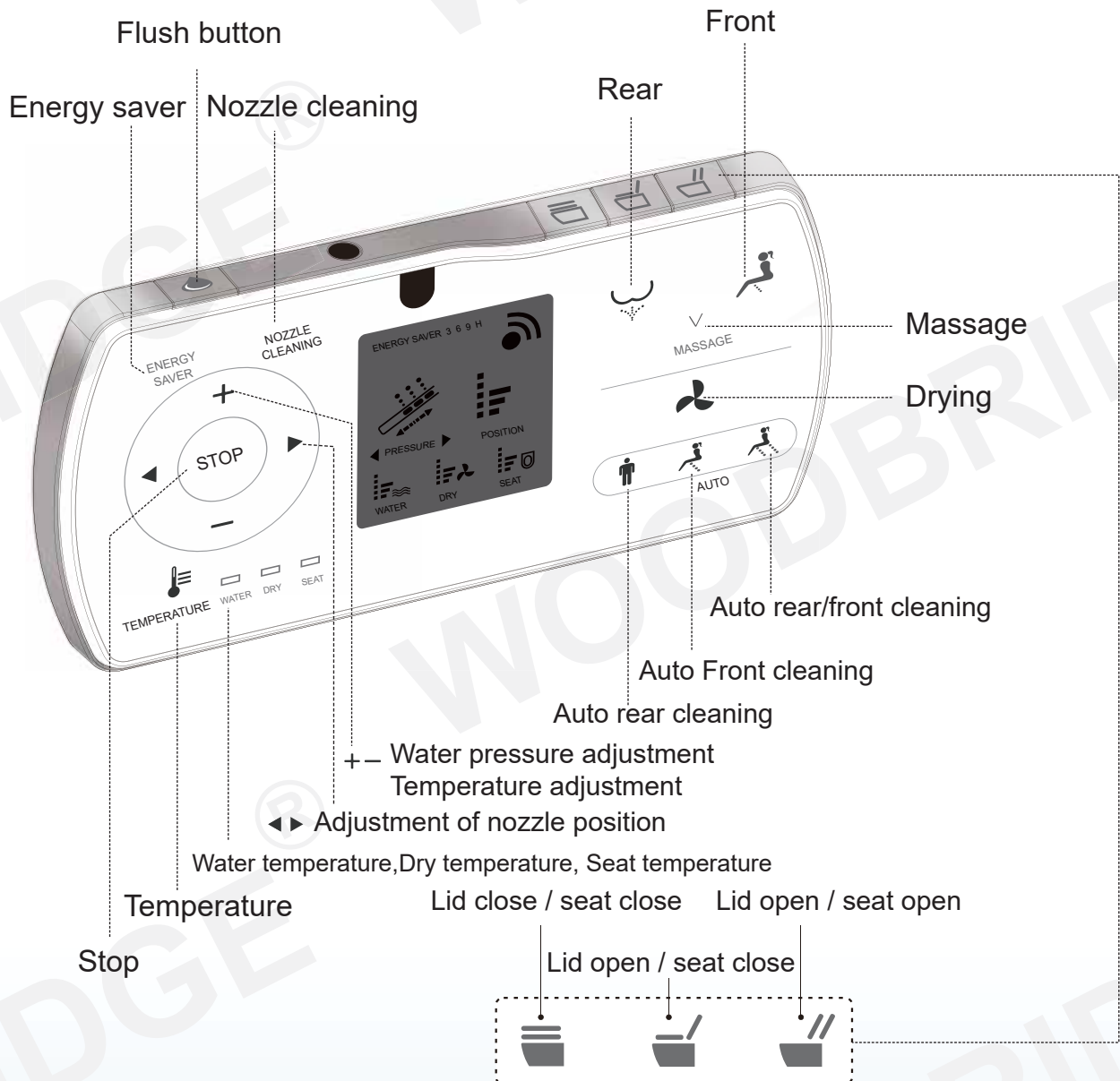


(3) Install battery and place remote control to the hanger.



Notice : Please do not install and use the product in moist place, such as steam room, and prohibit to place in the space where is easily got wet. In public place, please use screw to fix the remote control with bracket in avoid remote control missing.

Remote control illustration



Notice:

If the toilet you buy is with auto open/close function, the remote control is as the picture above. Please refer to page 8 for operation method and turning off auto open/close function.

Rear/Front cleaning

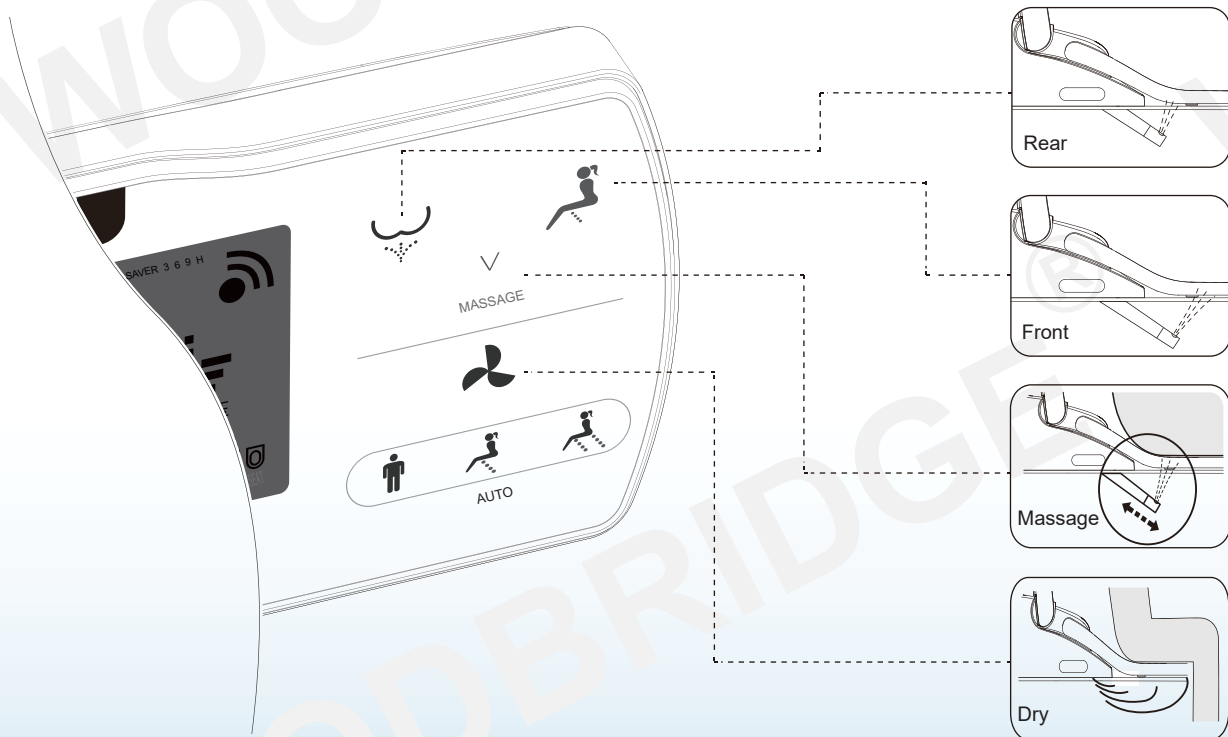
Press “Rear”/“Front” button, the water comes out of wand to clean the rear/front portion of body. It automatically stops after a cycle of cleaning. If press “STOP” button when using, the function will stop immediately.

Massage

Press “MASSAGE” button to activate massage function, the nozzle moves forward and back to extend the cleaning scope; Press “MASSAGE” button again to stop the function.

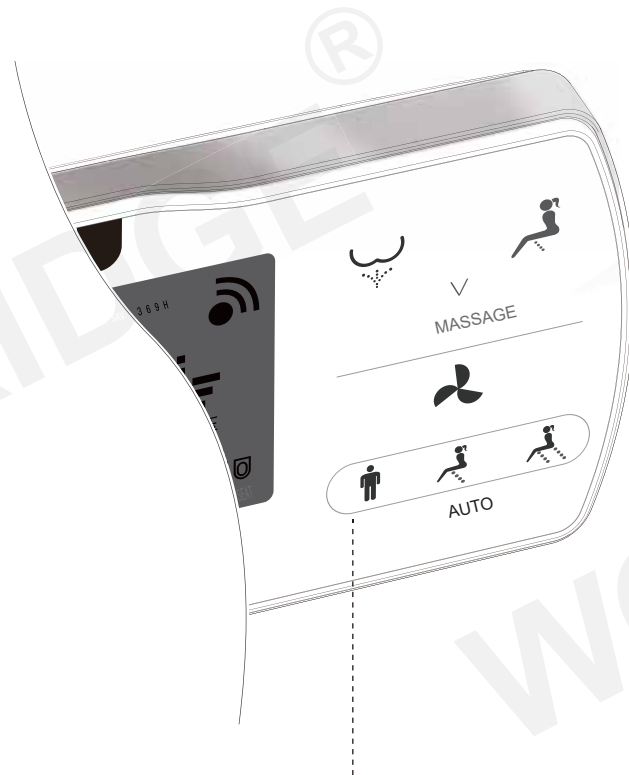
Drying Operation




Press “DRY” button, warm wind comes out of wand to dry. After a cycle or user leaves the seat, it automatically stops.



Auto function

Full-automatic function can be achieved by three “AUTO” buttons, convenient and practical. User can pre-set the suitable nozzle position, water pressure and temperature and save the setting. Full-automatic function will be activated by pressing the related function button when using afterwards.



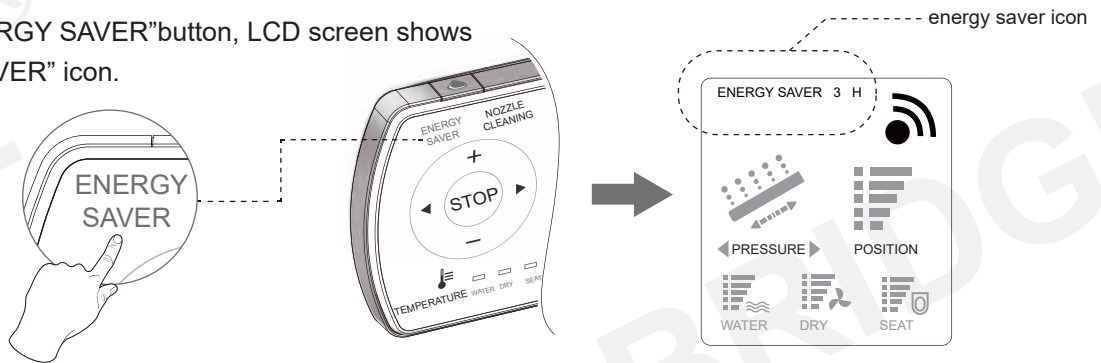
- 
 Auto rear cleaning → Rear cleaning 90s → Dry 180s → Automatic stop
 (Refer to page 11 for automatic setting detail)
- 
 Auto front cleaning → Front cleaning 90s → Dry 180s → Automatic stop
 (Refer to page 13 for automatic setting detail)
- 
 Auto rear and front cleaning → Rear cleaning 90s → Front cleaning 90s → Dry 180s
 → Automatic stop
 (Refer to page 14 for automatic setting detail)

Energy saver

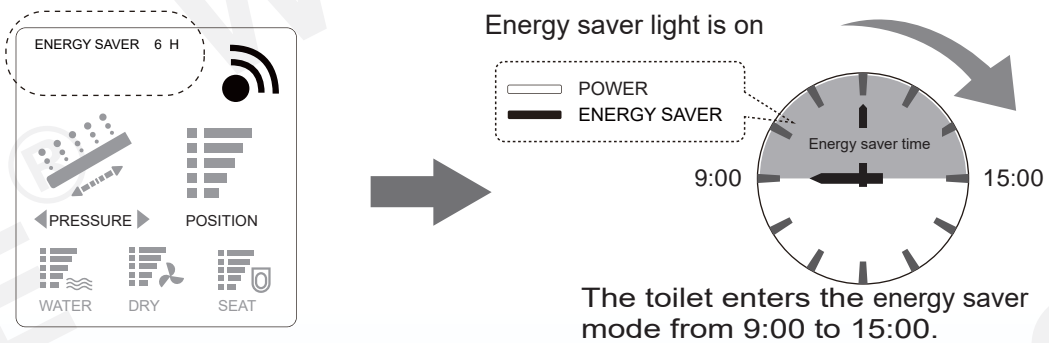
Setting energy saver time

Press “ENERGY SAVER” button, LCD screen shows energy saver and figures. It shows three options of energy saver period as 3-6-9-off, which can be selected accordingly. For example, user can set from 9:00 to 15:00 as energy saver according to following operation.

(1) Press “ENERGY SAVER” button, LCD screen shows “ENERGY SAVER” icon.



(2) Press “ENERGY SAVER” button again, LCD screen shows figure “6”, and the “ENERGY SAVER” icon disappears after 3 seconds, the setting succeeds. The toilet enters the energy saver mode from 9:00 to 15:00 every day. During this period, power light is off, and the energy saver light is on. It goes back to normal operation mode after energy saver time.



(3) Cancel energy saver set: Press “ENERGY SAVER” button continuously until this function is cancelled. (Nothing display on the screen.)

Energy saver:

The toilet will be under energy saver mode automatically after setting. Under energy saver mode, seat temperature is on low temperature status (first level) to achieve energy saver.

Notice:

If user sits on the seat, the energy saver mode is paused, and enters into the function mode, the seat starts to heat immediately (under opening seat temperature circumstance). The energy saver mode restores after user leaves.

When the energy saver mode is set, the icon disappears automatically, which is normal set.

Spray nozzle position adjustment

During "REAR" or "FRONT", press spray nozzle button of "◀" and "▶", to move the position forward and backward by adjusting 5 levels.

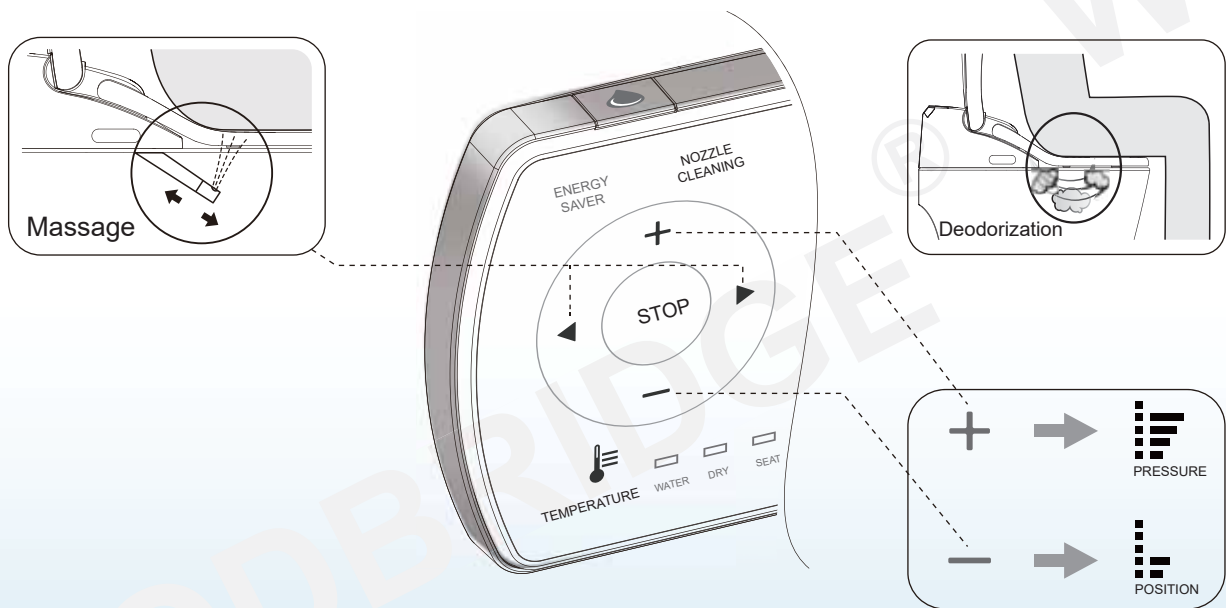
Water pressure adjustment

During "REAR" or "FRONT", press water pressure button of "+" and "-", to adjust pressure for rear and front cleaning.

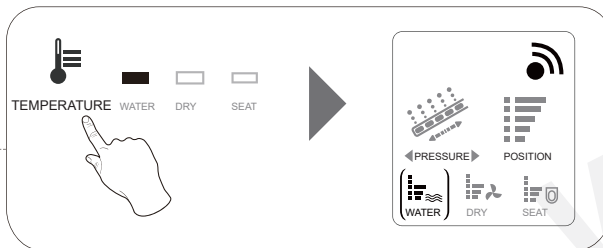
Automatic deodorization

Remark:

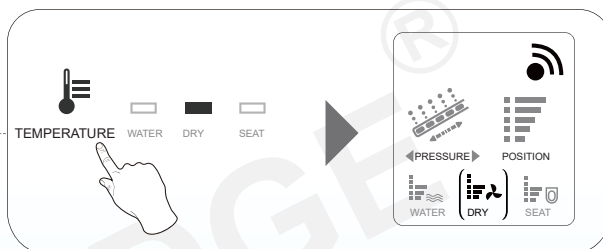
The deodorization function starts to work automatically as the user sits on the seat and stops automatically 3 seconds after the user leaves the seat. When drying, the function of automatic deodorization stops.



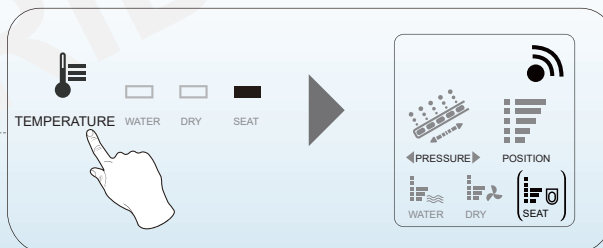
Temperature adjustment



Water temperature adjustment:
Press "TEMPERATURE" button one time, "WATER" light is on, icon on the screen (WATER) lights on, then adjust water temperature by "+", "-" button. It is regarded as operation completed if there is no operation in 5 seconds, and then "WATER" light is off, and () icon disappears. Long press "-" button until the "WATER" icon disappears to close the "WATER" function.



Press "TEMPERATURE" button twice, "DRY" light is on, and (DRY) icon on the screen lights on, then adjust wind temperature by "+", "-" button. It is regarded as operation completed if there is no operation in 5 seconds, and then "DRY" light is off, () icon disappears. Long press "-" button until the "DRY" icon disappears to close the "DRY" function.





Press "TEMPERATURE" button three times, "SEAT" light is on, and (SEAT) icon on the screen lights on, then adjust seat temperature by "+", "-" button. It is regarded as operation completed if there is no operation in 5 seconds, and then "SEAT" light is off, () icon disappears. Long press "-" button until the "SEAT" icon disappears to close the "SEAT" function.


Full flush

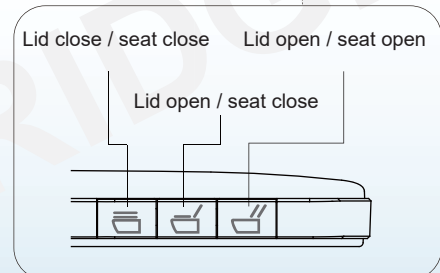
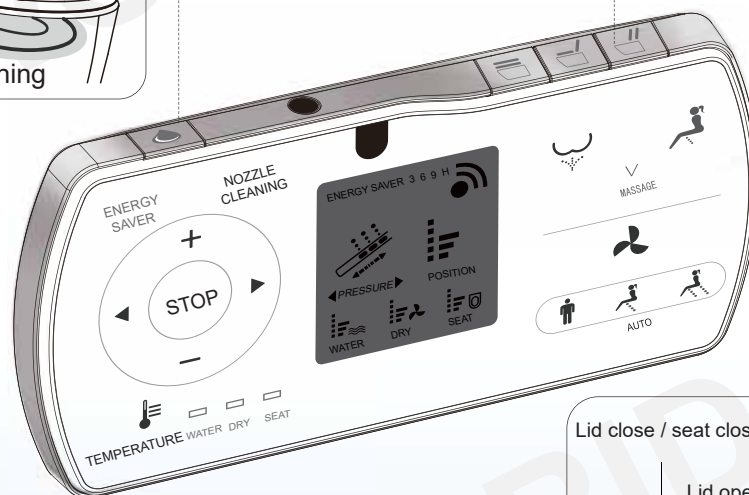
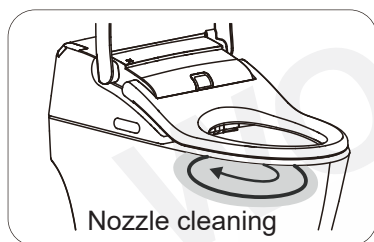
Press “FLUSH” button to activate full flushing.

Auto lid open/close (Only for toilet with this function)

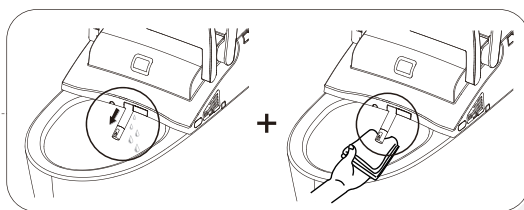
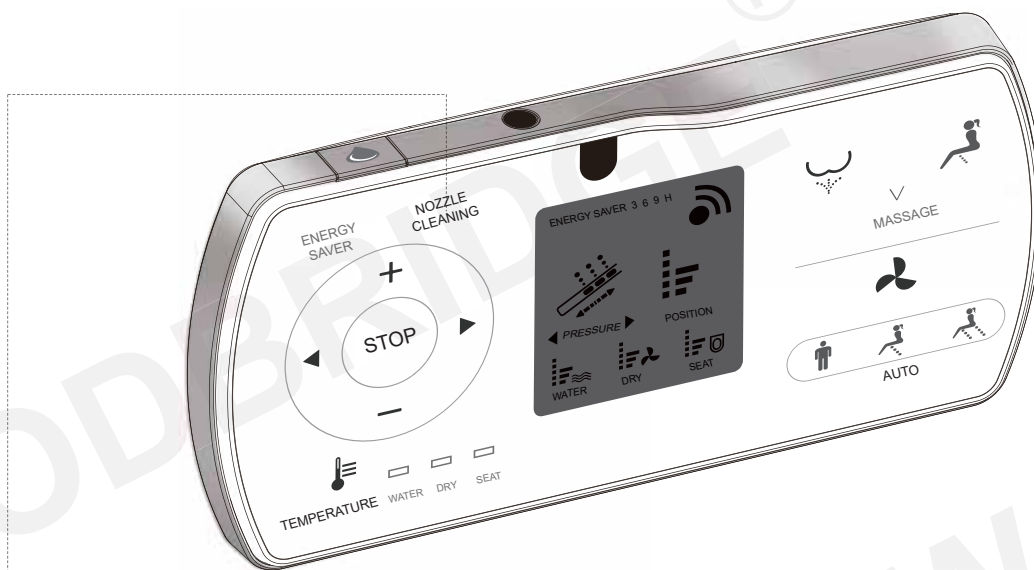
Press “” button to close seat cover.

Press “” button to open lid and close seat.

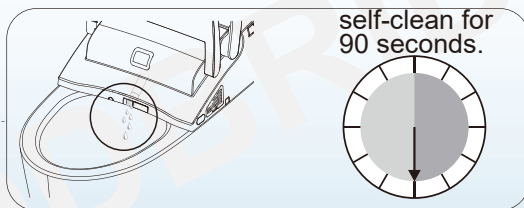
Press “” button to open lid and seat.



Nozzle cleaning



Nozzle self-cleaning by quick press:
Quick press “NOZZLE CLEANING” button, the nozzle self-cleans for a while and moves to the front position (no spray). People can continue to clean nozzle manually.




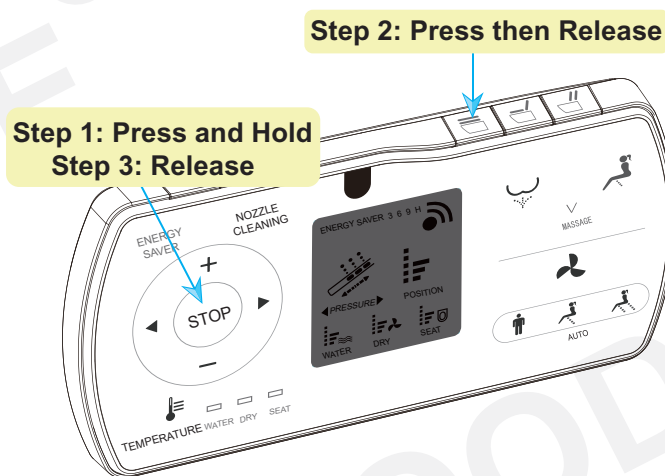
Nozzle self-cleaning by long press :
Long press “NOZZLE CLEANING” button, the spray won't move forward and nozzle self-cleans for 90 seconds.

Set Auto Function

Activate/Deactivate some functions with combination button

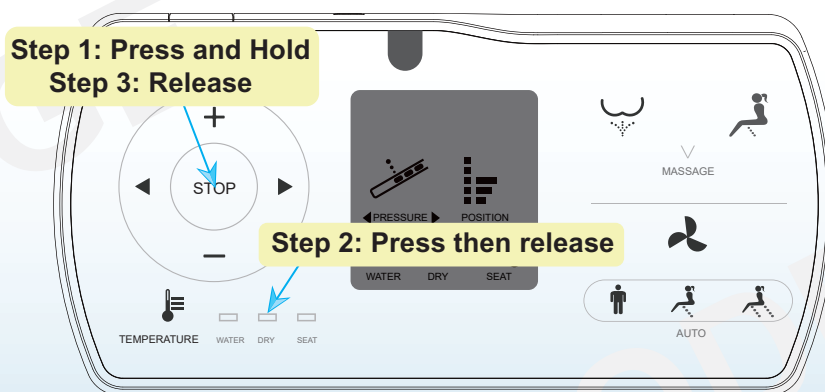
Auto open/close

Press and hold “STOP” button (step 1), then press and release “”, button (step 2), it is the mode of auto open/close, lastly release the “STOP” button (step 3). Repeat above action to stop this function. (This key combination is only for toilet seat with auto open/close function. The default setting of auto open/close is in the off status, so it needs to be turned on at the first time use.)



Activate/Deactivated Night light

To activate/deactivate the light, press and hold the “STOP” button (step 1), then press and release the “DRY” button (step 2), lastly release the ‘STOP” button (step 3). Make sure you hear a beep sound to confirm the setting is completed or you will have to restart the same process again.



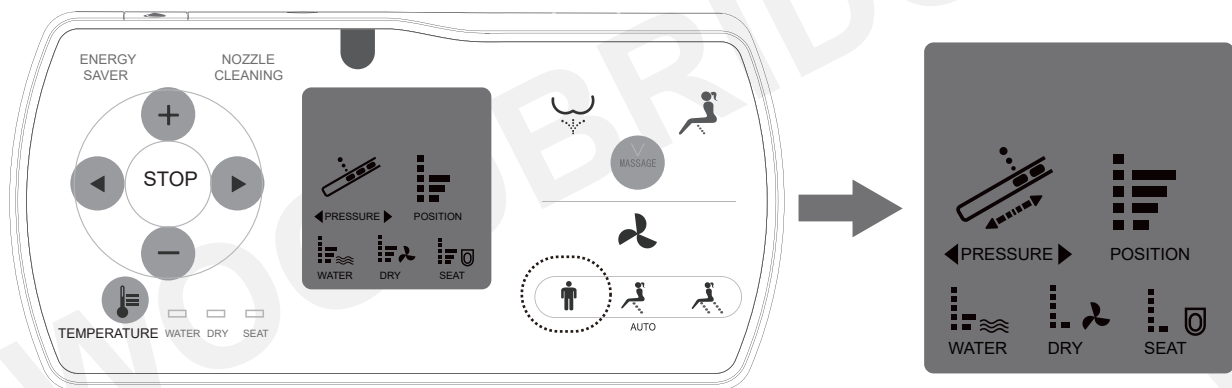
Please note night light feature is default at the off status because the room must be completely dark for the light to turn on. Repeat the process and the night light will switch to intelligent status. Repeat above process constantly, the night light will switch between off status and intelligent status.

Set Auto Function


Set automatic Rear cleaning function

The default setting of automatic function is water pressure on level three, nozzle position on level three, water temperature, wind temperature and seat temperature on level three, the massage function is in the off state. User can re-set based on personal preference.

- (1) Adjust water pressure, nozzle position, temperature by function button in below grey circle, and open/close massage function.



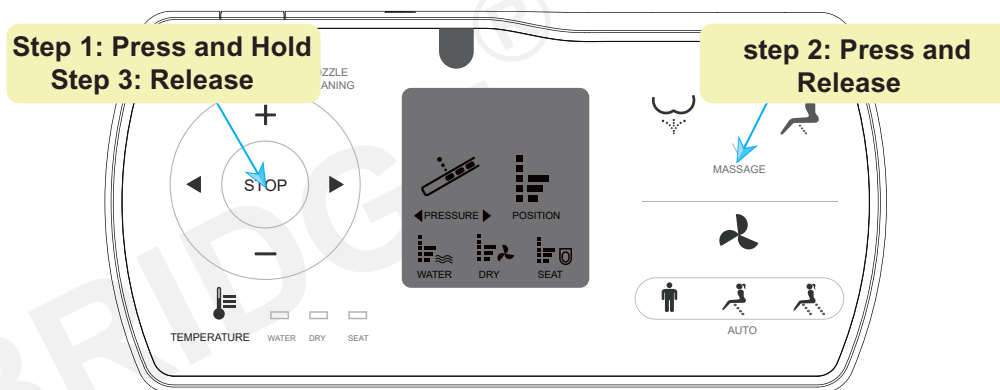
For example, the nozzle position is on level 2, and massage function is open; the water pressure is on level 4; water temperature is on level 2, while dry temperature and seat temperature are on level 1.

- (2) After setting is completed, long press rear cleaning automatic button for 3 seconds to save the setting.
- (3) After above steps, quick press “” afterwards when using, LCD displays the previous saved settings of rear cleaning level, temperature level and massage status. By this time, the toilet operates rear cleaning 90s, and then dry 180s automatically without pressing other buttons.
- (4) During automatic rear cleaning, user still can change the level, temperature and massage status, and press “REAR” button 3 seconds to save the new settings.

Set Auto Function

Quiet mode

To activate/deactivate the Quiet mode, press and hold the “STOP” button (step 1), then press and release “MASSAGE” button (step 2), lastly release the “STOP” button (step 3). Make sure you hear a beep sound to confirm the setting is completed or you will have to restart the same process again. Repeat the process to start buzzer function.



User code

The user code needs to be set to avoid disturbance from remote controls when more than one toilet is use in the house. Turn on the toilet for setting while turn off others.

(1) Press and hold “STOP” button (step 1) and then press and release “REAR” button (step 2), lastly release “ STOP” button (step 3) to enter to user code setting. The remote control shows only water pressure and spray position level. Characters are blinking on the screen.

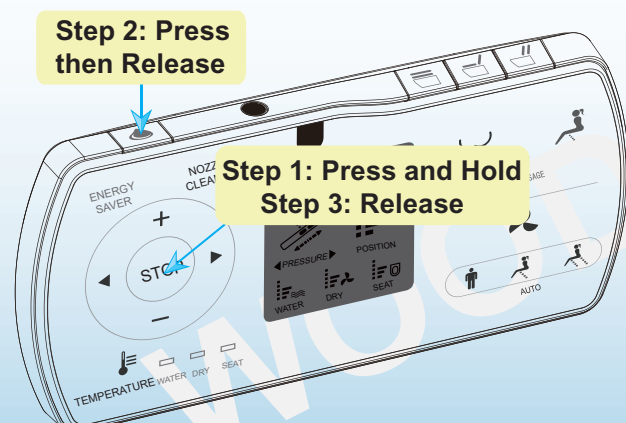
(2) Press water pressure buttons of “+” and “-” to choose user code 1-9.

(3) Press and hold “STOP” button and then press and release “REAR” button again, lastly release the “STOP” button and remote control will save the setting and exit user code setting window, the buzzer will ring “click” to indicate successful setting.

The sum of water pressure and position level on LCD is the user code. Restart to clear the user code and reset

Automatic flush button


Press and hold “STOP” button (step 1) and then press and release “FLUSH” button (step 2), lastly release “STOP” button (step 3) to start or close automatic flushing function. When the automatic flushing function is turned on, toilet will automatically flush after detecting user sitting for more than 6 seconds and leaving the seat for more than 3.5 seconds.

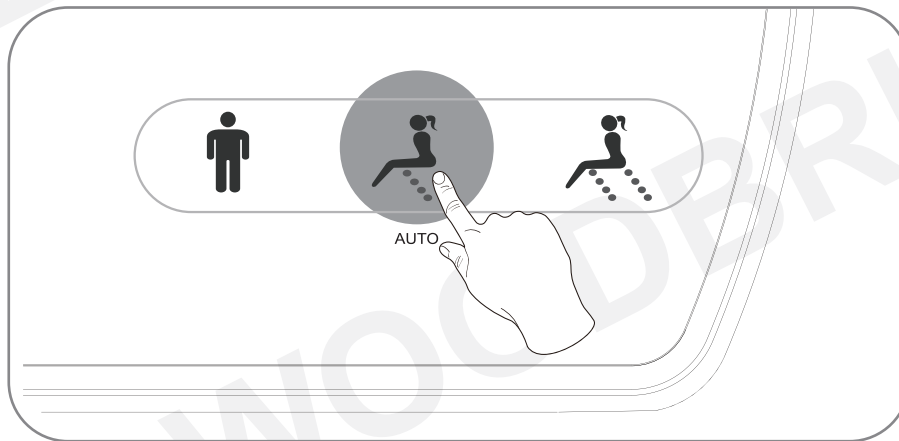



Set Auto Function

Set automatic Front cleaning function

(1) Press spray nozzle position adjustment button to adjust nozzle to suitable position; Press “+”, “-” to adjust water pressure; set temperature level; open/close massage function.

(2) Press “” front cleaning automatic button for 3 seconds, see below picture, and save the setting.



(3) After above steps, quick press “” afterwards when using, LCD displays the previous saved settings of front cleaning level, temperature level and massage status. By this time, the toilet operates rear cleaning 90s, and then dry 180s automatically without pressing other buttons.

(4) During automatic front cleaning, user still can change the level, temperature and massage status, and press “FRONT” button 3 seconds to save the new settings.

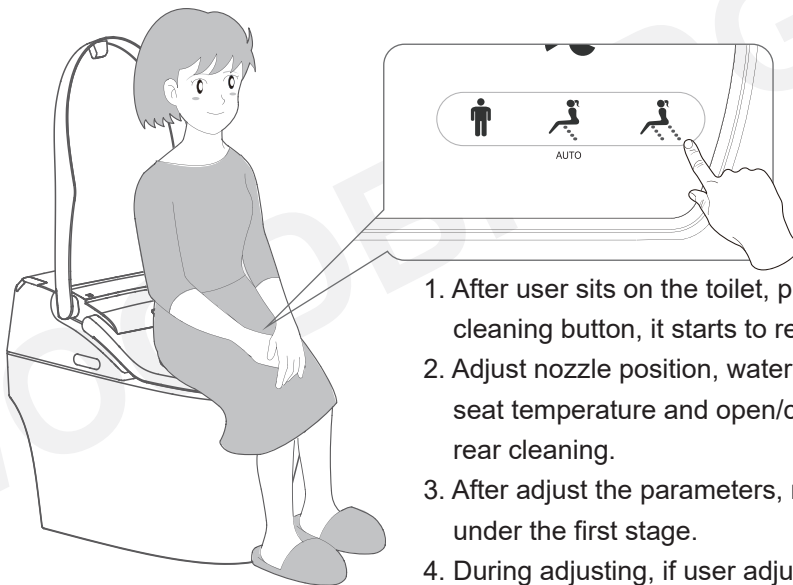
Set Auto Function

Set automatic Rear and Front cleaning combination function

Note: During using toilet, user can find the suitable level and temperature after comparing repeatedly. Please set the automatic Rear and Front cleaning combination function during using toilet.

The first stage: rear cleaning 90s

(1) Automatic Rear and Front cleaning combination function includes rear cleaning 90s, front cleaning 90s and drying 180s. User can adjust level and temperature in different stages.




1. After user sits on the toilet, press automatic Rear and Front cleaning button, it starts to rear cleaning about 90s.
2. Adjust nozzle position, water pressure, wind temperature, seat temperature and open/close massage function during rear cleaning.
3. After adjust the parameters, remote control saves the parameters under the first stage.
4. During adjusting, if user adjusts many times, the remote control saves the latest parameter.

The second stage: front cleaning about 90s

(2) After finishing rear cleaning, toilet enters front cleaning stage automatically. User can set nozzle position, water pressure, temperature and open/close massage function, and the remote control saves the latest parameter under the second stage.

The third stage: Drying about 180s

(3) After finishing front cleaning, toilet enters drying stage automatically. User can set wind temperature, and the remote control saves the latest parameter under the third stage.

(4) After set all parameters, quick press “” button afterwards when using, LCD displays the previous saved settings. By this time, the toilet operates rear cleaning, front cleaning and drying automatically by one-button operation. If user needs to change previous settings, please repeat step 1-3.

Set Auto Function

Remark:

By pressing the button, the signal indicator will flash which means the signal is sent out; Then the buzzer rings "click" means the main unit receives the signal and executes the instruction. If the signal indicator doesn't flash, that means the button is not efficiently pressed and needed to be re-pressed. If the buzzer does not ring, that means the main unit doesn't receive the signal. Please regulate the remote control direction and re-press the button.

In case of power cut during wand's spray operation, the wand cannot go back to place, please wait until the power is reset. In case of a power cut for a long period, please push the wand softly back by hand. Do not push hard, to avoid damage to wand and electrical machine.

The body should touch the seat and the buzzer rings "click", which means functions of front cleaning, rear cleaning and drying are in operation. The nozzle will continue to spray for 1-2 seconds after user stands up during spray operation, so please press "STOP" button before standing up.

Use nozzle self-cleaning function after user leaves the seat. After cleaning, if user doesn't press "NOZZLE CLEANING" or "STOP" button, nozzle wand will go back after 10 minutes or user sits on the seat.



Thank you for using WoodBridge products!

Customer Service Phone: 562-229-0088. (Monday - Friday 9 AM - 5 PM Pacific Time)

Or Email: help@woodbridgebath.com