

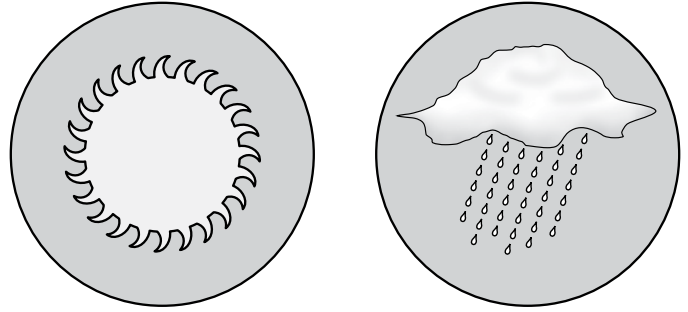
TruExterior[®]
Siding & Trim

INSTALLATION INSTRUCTIONS



INTRODUCTION TO TRUEXTERIOR SIDING & TRIM

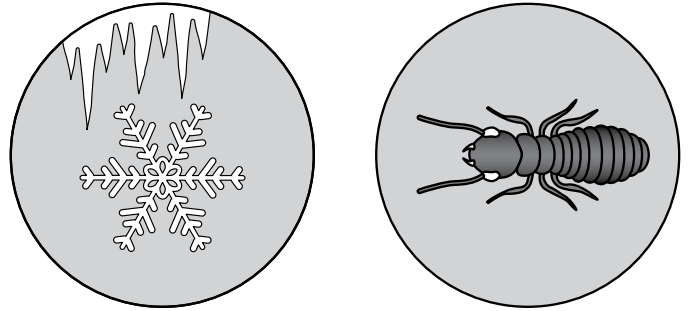
TruExterior Siding & Trim is made with an innovative poly-ash material that is highly resistant to moisture, expansion and contraction, and termites. It cuts and installs with carbide woodworking tools and meets or exceeds most code requirements. For additional information, visit the resources page on TruExterior.com.



MATERIALS & TOOLS

Materials

- TruExterior Siding
- TruExterior Trim
- Drainable weather-resistant barrier
- Flashing, flashing tape
- 6D or 8D X 2.5" stainless steel or hot-dipped hand-driven or pneumatic ring shank nails
- Stainless steel or hot-dipped galvanized nails with blunt tips and round heads nails, or #6 or larger exterior coated or stainless steel trim-head screws
- High-grade exterior caulk
- Exterior acrylic paint



Tools

- Carbide woodworking tools
- Tape measure
- Eye protection
- Respirator
- Gloves

STORAGE AND HANDLING

- Product must be stored flat on a level surface in a clean, dry location (**Fig. 1**).
- Keep product wrapped and protected from the elements until ready for installation (**Fig. 1**).
- Installing product wet or saturated may result in gapping at joint locations.

APPLICATIONS

TruExterior Siding and Trim offer exceptional durability in virtually any application. It's an ideal choice for hot, freezing, windy and wet climates. Approved for ground contact and contact with masonry or brick. Take precaution and avoid installing product in areas of standing water.

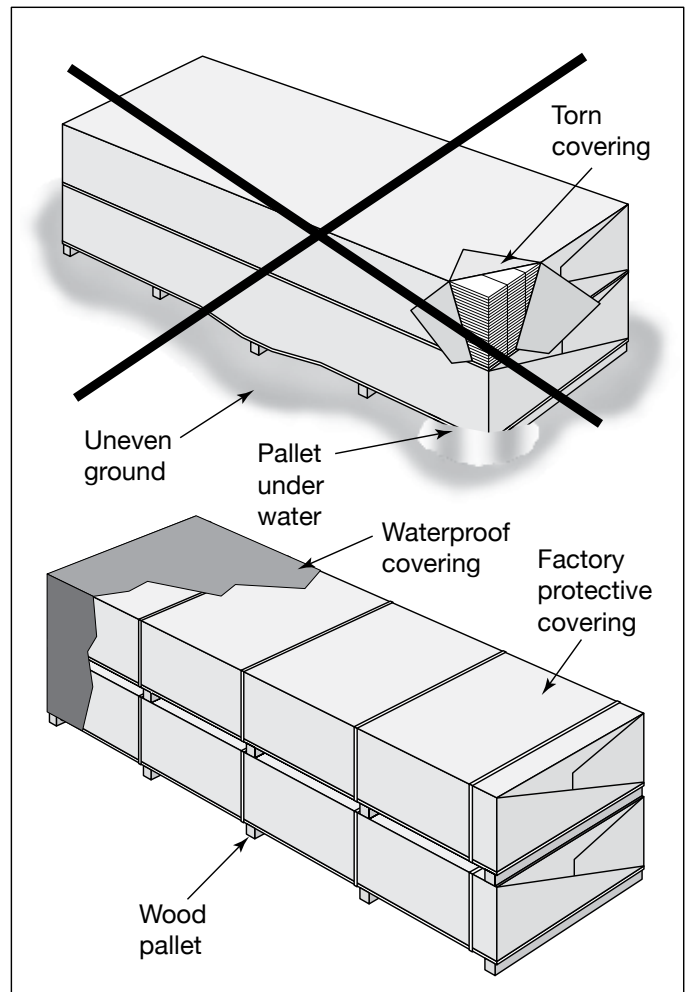


Fig. 1

APPROVED WALL PREPARATION

Traditional Wood Framed Walls

- TruExterior Siding must be installed on frame-built walls with studs spaced 16 in. O.C. or at most 24 in. O.C. (**Fig. 2**).
- The wall may be sheathed with O.S.B. panels depending on local codes. TruExterior Siding must be fastened at the locations of the studs (**Fig. 2**).

MANAGING MOISTURE

- Always install a drainable weather-resistant barrier according to local building code requirements (**Fig. 3**).
- Avoid installing product in standing water or areas that can stop water from draining away from the building.

Installing Flashing

- Prepare your step flashing along roof and wall lines using your weather barrier, flashing tape or z-flashing as counter flashing (**Fig. 3**).
- Allow a minimum 1/2" clearance between the siding and the roof line to help prevent debris from building up (**Fig. 3**).
- Install window and door flashing per window and door manufacturer guidelines.
- Siding may be installed right up against the trim and sealed with a high-grade exterior caulk.
- Appropriate color-matched aluminum flashing or 30 lb. felt strips can be used behind all butt joints to reduce water infiltration.

CUTTING TRUExTERIOR SIDING & TRIM

Safety Note: When cutting or shaping, avoid breathing dust. Use only outdoors or in a well-ventilated area. In case of inadequate ventilation, use respiratory protection. Always wear eye protection.

Installation Advantages:

- TruExterior Siding & Trim can be installed anywhere wood, engineered wood and fiber cement siding and trim products are used.
- TruExterior Siding can be cut, drilled and routed using carbide saw blades and woodworking tools to achieve custom shapes.
- Unlike other wood, engineered wood and fiber cement products, there is no need to prime or paint end-cuts or field-cut edges.

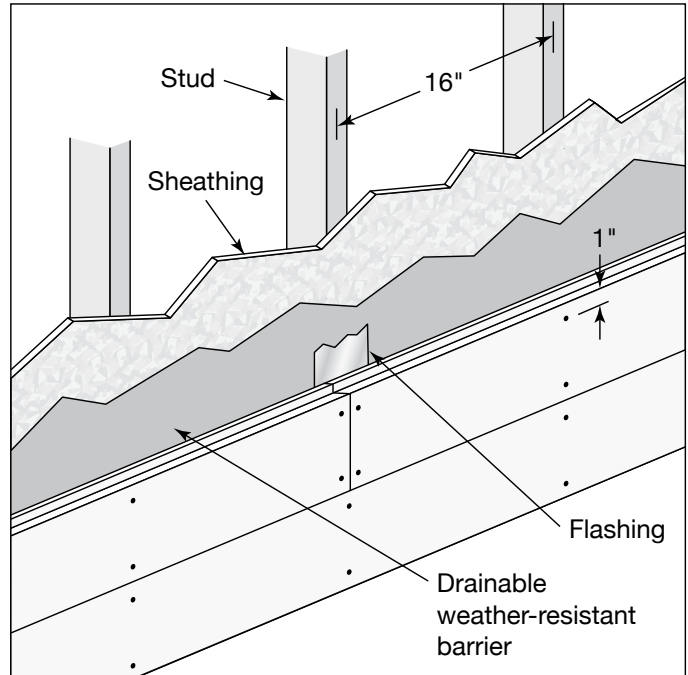


Fig. 2

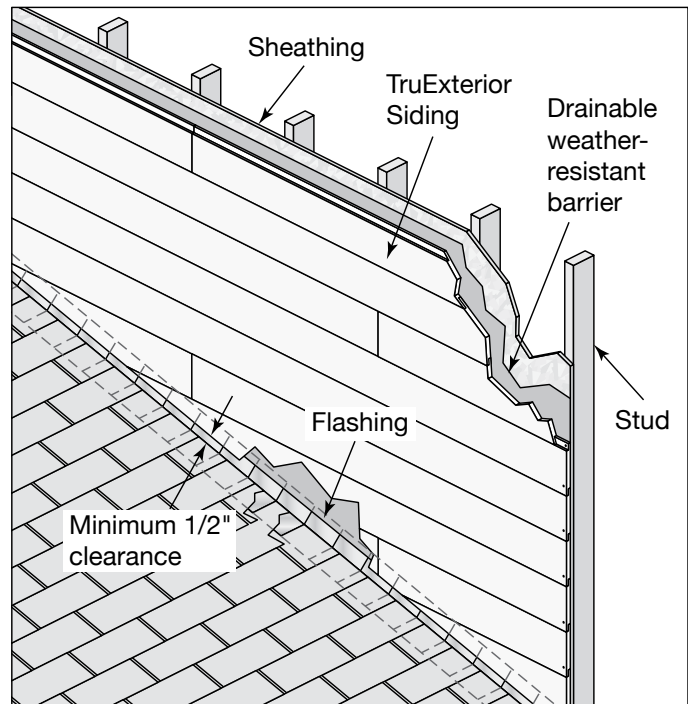


Fig. 3

INSTALLING TRUEXTERNAL SIDING

Note: Ensure boards are dry and free from moisture before installing.

Spacing

- TruExterior Siding expands and contracts significantly less in temperature changes than vinyl, wood, engineered wood, and fiber cement siding. Joints can be installed butted together with no gap.

Nailing TruExterior Siding

- Use 6D or 8D x 2-1/2" stainless steel or hot-dipped ring shank nails to meet wind load requirements stated in the ES report PER – 13069. Exterior-grade nails and screws may also be used. Check your local code requirements.
- Make sure your nail gun is set to drive the nail head even/flush with the surface of the siding.
- Fasteners should be spaced 16" to 24" and penetrate each stud at least 1-1/4" deep.
- If installing over foam insulation sheathing, make sure the length of your nail is adjusted to ensure it penetrates each stud at least 1-1/4" deep.
- For 6" and 8" profiles use 2 fasteners per every framing member. At least one fastener should be through the face of the profile, simply fastening the product through the tongue alone is not sufficient (**Fig. 4a & 4b**).
- For 10" profiles use 3 fasteners per every framing member. At least two fasteners should be through the face of the profile (**Fig. 4b**).
- When installing TruExterior in situations where fasteners are unable to penetrate solid framing, fasten into a minimum 7/16 O.S.B. or 15/32 plywood no more than 12" apart along the length of the siding.

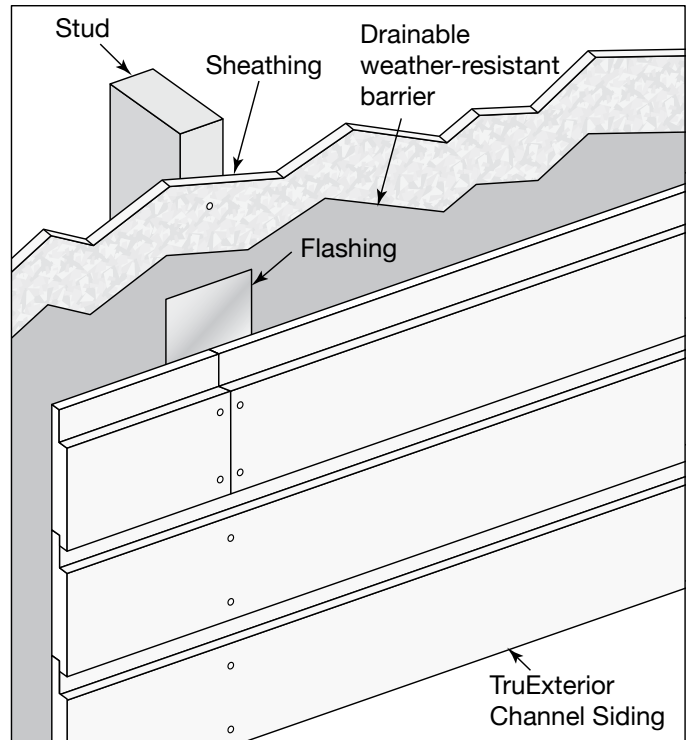


Fig. 4a

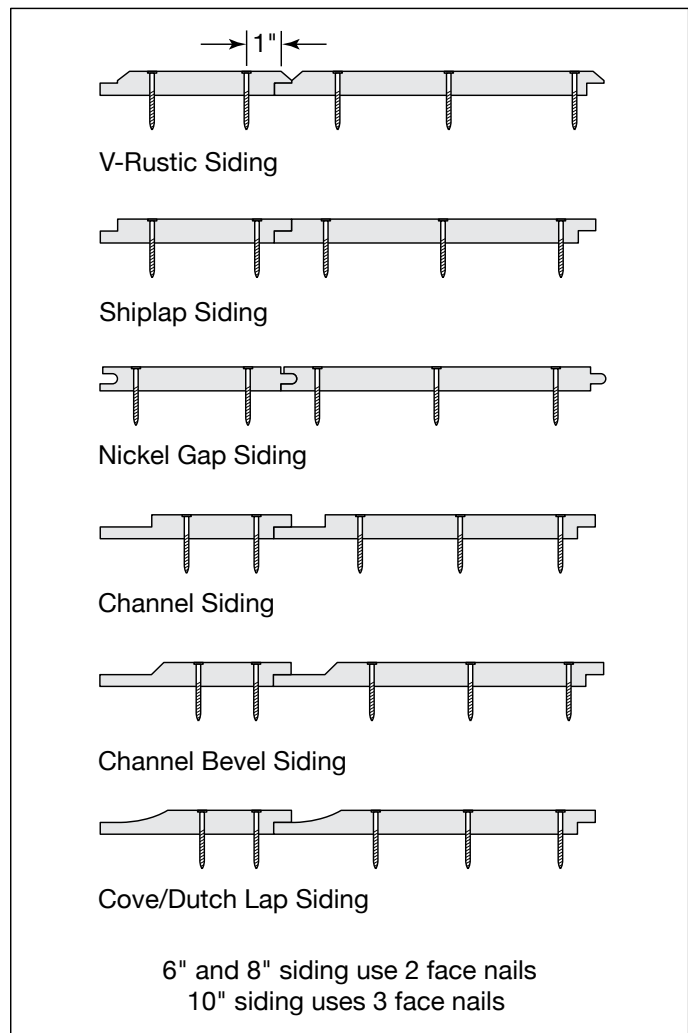


Fig. 4b

HOW TO HANG TRUEXTERNAL SIDING

Installation Methods

TruExterior Siding can be installed in two orientations to enhance the curb appeal of a home—traditional horizontal application or vertical application.

Follow the nailing guidelines to help ensure a successful installation.

Horizontal Application

- Always stagger your butt joints over stud locations (**Fig. 5**).
- Siding may be installed tight against the trim at the ends of each course.
- Where a course of siding runs underneath a window, you must face nail every 8" and cover the nail head with high-grade exterior caulk or wood filler.
- Seal all vertical joints along window and door edges with a high-grade exterior caulk per the manufacturer's guidelines.

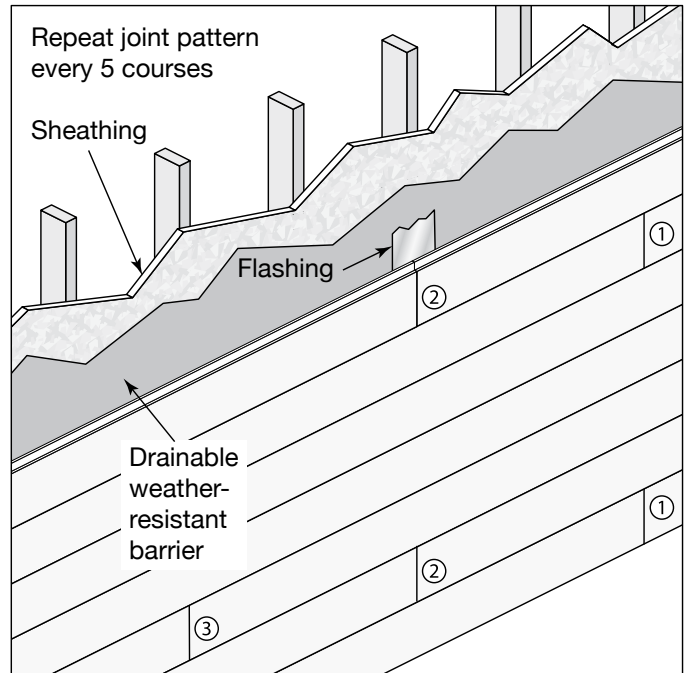


Fig. 5

Vertical Applications

- When installing TruExterior in a vertical orientation, make sure to install flashing above windows, doors and roof lines as usual.
- In situations where the height of the home requires more than one piece of siding installed vertically, create a "belly band" trim joint with a piece of 1"x4", 1"x6" or 1"x8" trim (depending on preference) and z-flashing above and below (**Fig. 6**).
- Fasten each piece of siding at the tongue and on the face no less than 3/4" from the edge and no more than 12" along the length of both sides of the siding.
- Install a frieze board trim piece with flashing along the top edges of the siding under the soffits.

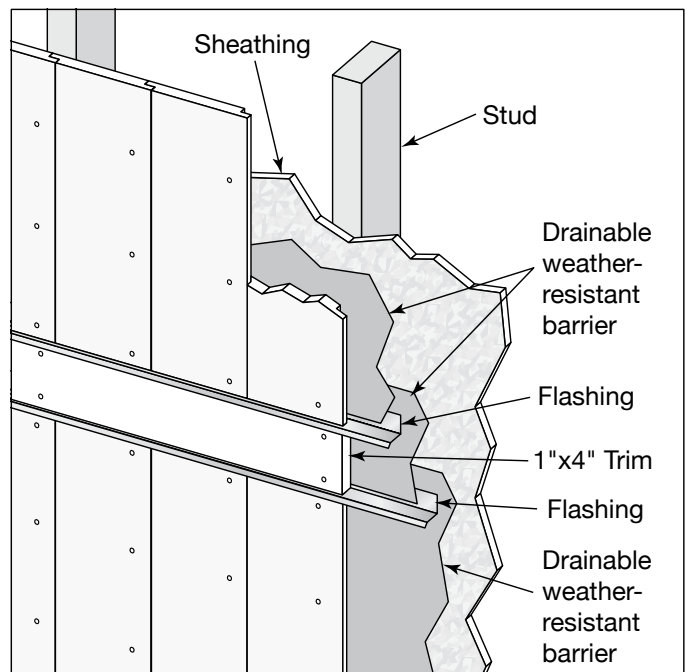


Fig. 6

INSTALLING TRUEXTERNAL TRIM

Note: *TruExterior Trim should never be used for structural or load-bearing applications.*

- When installing TruExterior Trim, allow the top trim pieces to extend to the edges of the vertical trim pieces. The bottom trim should fit between the two vertical side pieces (**Fig. 7**).
- Nail the trim pieces in place with two blunt-tipped, roundheaded stainless steel or hot-dipped galvanized nails, or #6 or larger exterior coated or stainless steel trim-head screws within 2" of the edge of the trim piece (**Fig. 8**).
- Use 2 nails every 16" along the length of the trim piece. For trim 10" or wider, use 3 nails across the trim piece spaced every 16" along the length.
- On long trim runs, use butt joints cut at 30- to 45-degree angles (**Fig. 8**).

Note: *TruExterior Trim may be installed directly over bricks or other masonry exteriors.*

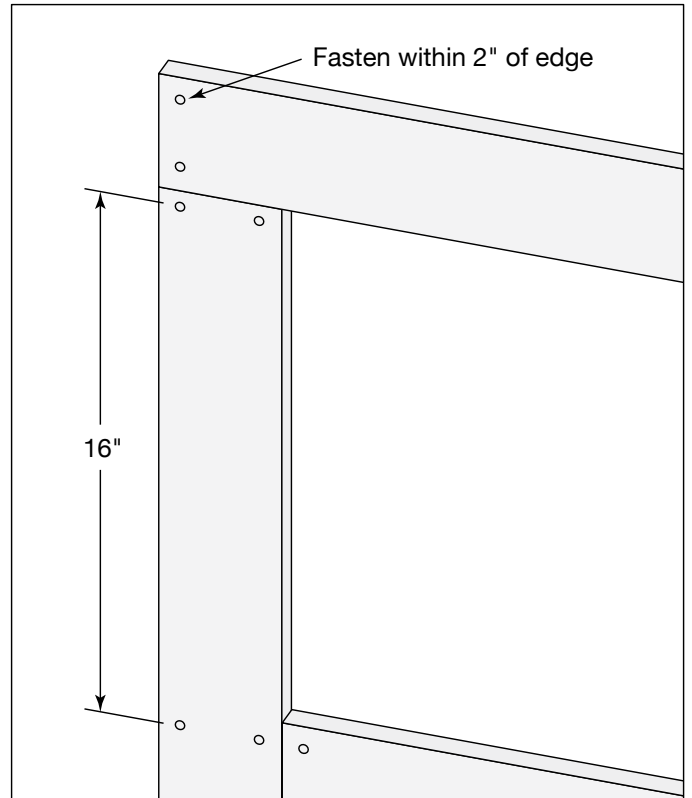


Fig. 7

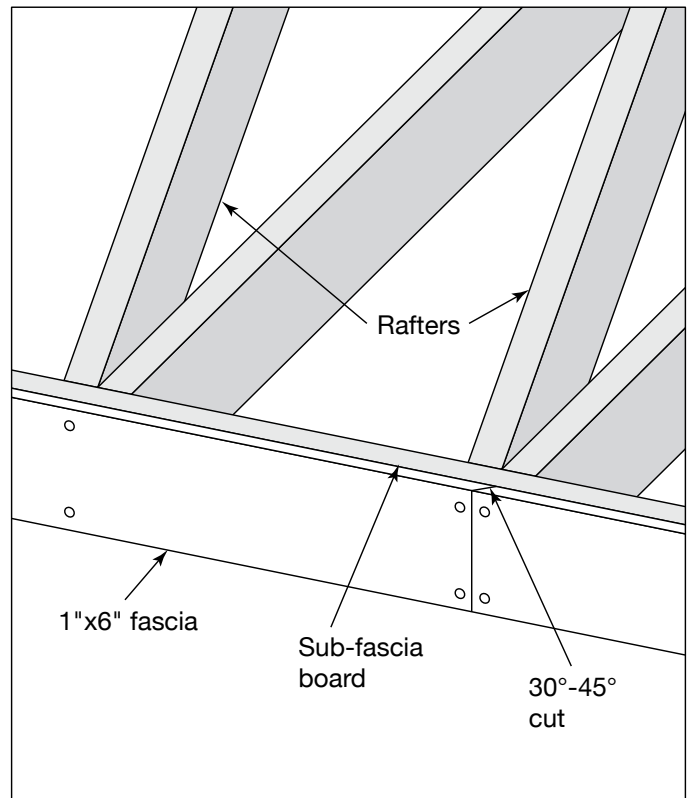


Fig. 8

INSTALLING INSIDE CORNERS

- When creating inside corners, install 2"x2" trim into the corner using blunt-tipped, roundheaded stainless steel or hot-dipped galvanized nails, or #6 or larger exterior coated or stainless steel trim-head screws (Fig. 9a).
- Use 1 nail every 16" along the length on alternating sides of the trim, ensuring penetration into the framing (Fig. 9a).
- Butt each course of siding up to the corner trim and secure in place (Fig. 9a).
- Seal the joint between the corner trim and the siding with high-grade, exterior acrylic caulk (Fig. 9a).

INSTALLING OUTSIDE CORNERS

- Typical outside corners are created using 1"x5" and 1"x6" trim, installed using blunt-tipped, roundheaded stainless steel or hot-dipped galvanized nails, or #6 or larger exterior coated or stainless steel trim-head screws (Fig. 9b).
- Secure each trim piece with 2 nails every 16" along the length of each piece of trim, staggering the nail pattern slightly to prevent opposing nails from contacting each other (Fig. 9b).
- Ensure that the nails penetrate the framing and the nails of the longer trim piece penetrate the shorter trim piece at the corner (Fig. 9b).
- For trim 10" or wider, use 3 nails across, placed every 16" along the length.
- Butt each course of siding up to the corner trim and secure in place (Fig. 9b).
- Seal the joint between the outside corner trim and the siding with high-grade, exterior acrylic caulk (Fig. 9b).

Note: Use any width trim to create a custom look for your corners.

SEALING GAPS

While TruExterior Siding does not require priming or sealing of end cuts, a variety of caulks and sealants may be used in conjunction with the product to help prevent water intrusion to the structure (Fig. 9a & 9b).

PAINT TRUExTERIOR PRODUCTS

TruExterior siding requires paint within 150 days of installation or the warranty will be void.

- TruExterior products are dimensionally stable which promotes long-lasting paint adhesion, even with dark colors.
- Nail holes, screw holes and minor dents and dings may be repaired with a high-grade exterior caulk or exterior wood filler.
- Use a high-grade exterior acrylic paint and follow the paint manufacturer's application instructions.
- Ensure all surfaces are free of dirt or other contaminants and completely dry before painting.
- Ensure that all exposed TruExterior Siding and Trim surfaces are adequately covered with paint per the paint manufacturer's guidelines.
- When using a sprayer to apply paint, it is best to back roll or back brush to avoid paint runs, drips or bubbles on the siding surface.

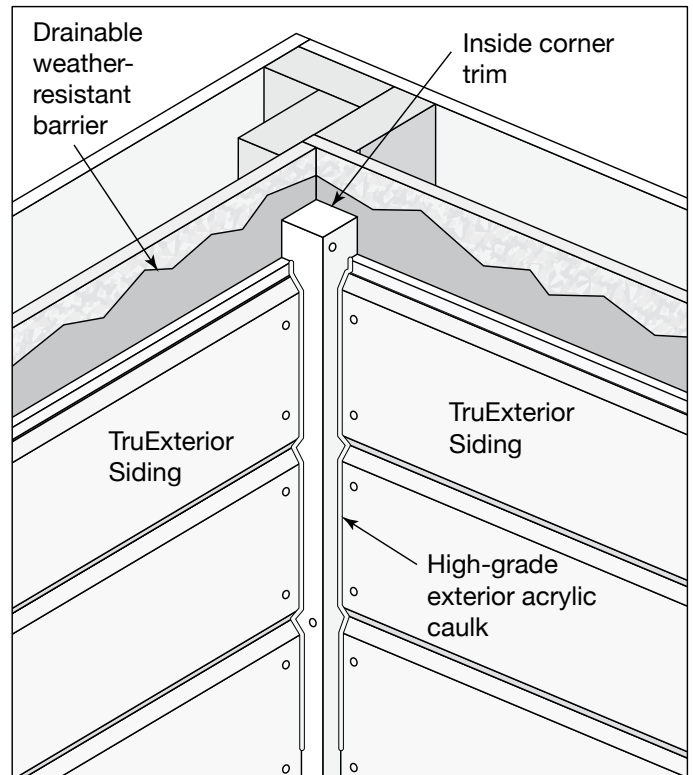


Fig. 9a: Inside corner detail, no gap and with caulk

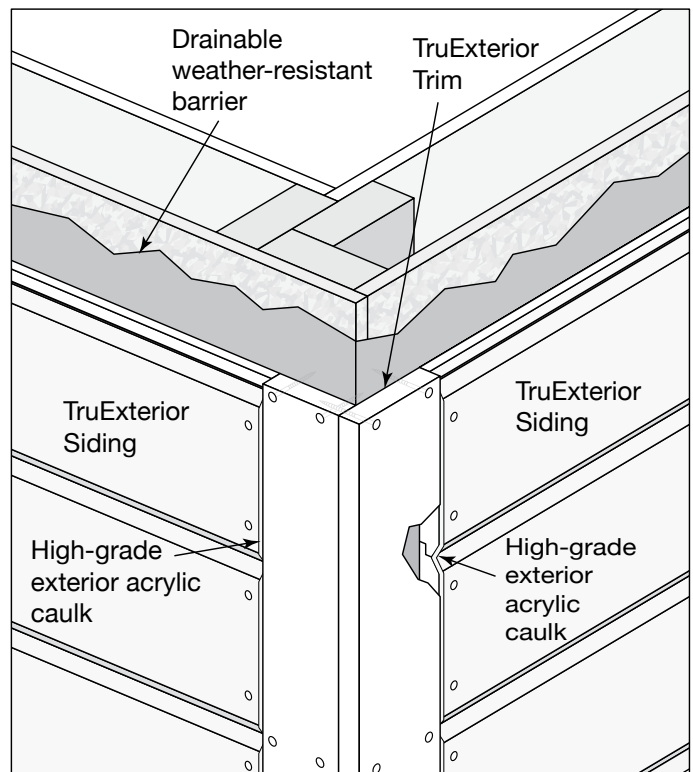


Fig. 9b: Outside corner detail, no gap and with caulk

TruExterior[®]

Siding & Trim

Installation Instructions

TruExterior.com | 800-521-8486

Made in the USA



BORAL
BUILDING PRODUCTS

Atlantic[®] Premium Shutters | Builders Edge[®] | Foundry[®] Specialty Siding | Grayne[®] Engineered Composite Shingle
Kleer[®] | Mid-America Siding Components[®] | SturdiMount[®] | Tapco Tools[®] | TruExterior[®] Siding & Trim
Vantage[®] Shutters | Versetta Stone[®] | Wellcraft Egress Systems[®]