



Installation Manual

ELITE XTS

Release: October 2019



Abstract

Thank you for purchasing an ELITE product. Since ELITE was first introduced, each version has incorporated suggestions and ideas from our customers – student and academic general aviation and professional. Through valuable customer feedback we were able to constantly enhance ELITE's PC-based simulation software, so please let us know what you think of ELITE XTS.

ELITE (ELectronic IFR Training Environment) is a software that allows you to use your personal computer to replicate the instrument panel, avionics and flight aerodynamics of specific aircraft to practice all procedures and simulate elements of flight under instrument meteorological conditions.

This Installation Manual is to provide instructions on how to install the ELITE XTS software as well as some additional features (e.g. Garmin Trainer). If you have any questions or run into some trouble, please feel free to check out [ELITE's Help and Learning Center](#) or to reach out to our Technical Support team.

ELITE Technical Support

www.flyelite.ch/support

support@flyelite.ch

Contents

1	Minimum System Requirements	2
2	ELITE XTS Main Installation	3
2.1	Overview	3
2.2	Prerequisites	5
2.2.1	Windows System	5
2.2.2	ELITE Hardware	5
2.2.3	Non-ELITE Hardware	5
2.2.4	Installation and Runtime Media	6
2.3	Software Installation Steps	7
2.3.1	ELITE Core	7
2.3.2	WibuKey Installation	11
2.3.3	ELITE GenView	16
3	ELITE Installation: Further Steps	20
3.1	ELITE Hardware Driver	20
3.2	Garmin Trainer	21
3.2.1	Prerequisites	22
3.2.2	GNS430/530	22
3.2.3	GTN650/750	28
4	Additional Modules	33
4.1	ELITE ProPanel III (BCSL-H)	33
4.1.1	Prerequisites	33
4.1.2	Installation	33
4.2	iPad App Installation	36
4.2.1	Overview	36
4.2.2	Prerequisites	36
4.2.3	iPad Addon Installation	36
4.2.4	Configuration within ELITE	37
5	Move ELITE to another Computer	43
5.1	Transfer GNS & GTN License	43
5.1.1	License Deactivation	43
5.1.2	License Activation	44
6	Conclusion	45
6.1	Troubleshooting	45
6.2	Notes	46

1 | Minimum System Requirements

Before installing ELITE XTS, please double-check if your system fulfils all the requirements:

- Microsoft Windows 7 (32 or 64 bit), Windows 10 (32 or 64 bit) (it may run on other Windows versions but this is not supported).
- 2.0 GHz (or faster) Intel or AMD processor
- 3 GB RAM
- 5 GB available hard disk space
- 512 MB or better NVIDIA-brand OpenGL accelerated graphics card (two port video card for multiple monitors option: instrument panel monitor & instructor station monitor)
- At least one free USB port for connecting USB hardware. A USB hub may be required to connect multiple USB devices.

Note: ELITE XTS is not compatible with Windows 8.

2 | ELITE XTS Main Installation

2.1 Overview

The ELITE XTS software requires a minimum of 2 steps to install on a PC where no ELITE XTS has previously been installed. The 2 steps are:

- Elite Core installation
- Elite GenView installation

Depending on the number of add-ons ordered or on the attached controls hardware, additional setup steps may have to be executed, e.g. when using a ProPanel III (includes a control loaded yoke). The items available to install are listed in the selection window displayed at installer startup.

If you have purchased ELITE XTS and one GenView database area, the installer will contain the following items:

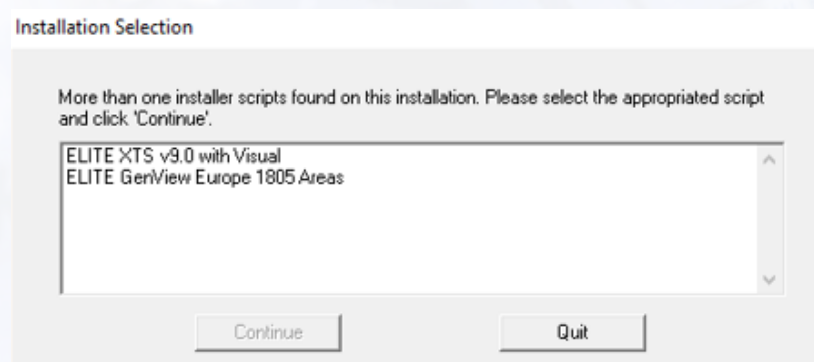


Figure 2.1: Basic ELITE Installation Selection Screen

Each item requires the setup program to be run, so in the case above, select the first item in the list and click on **Continue**. Once the installation is done, start the setup application again and select the second item. Repeat this for each item in the list you want to install.

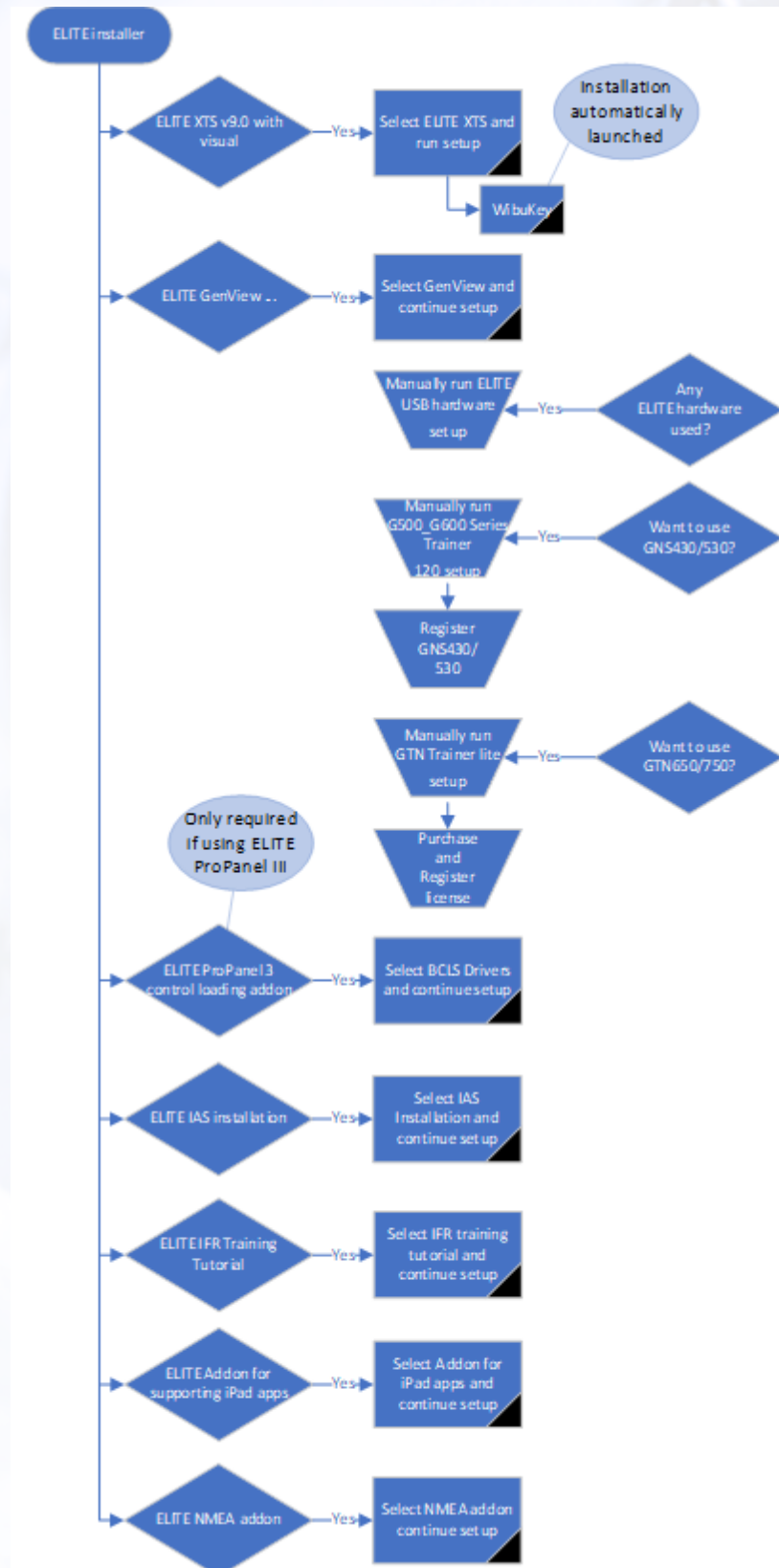


Figure 2.2: ELITE XTS Installation Procedure

2.2 Prerequisites

2.2.1 Windows System

ELITE XTS runs on Windows 7 and Windows 10. It may run on Windows 8.0 and 8.1, but it is not officially supported on these OS versions.

2.2.2 ELITE Hardware

Connect all your hardware to the computer before starting the installation. Connect the USB cables from the AP-4000, ProPanel and Pedals into USB slots on the PC. If the PC does not have enough free USB slots, use an USB hub.

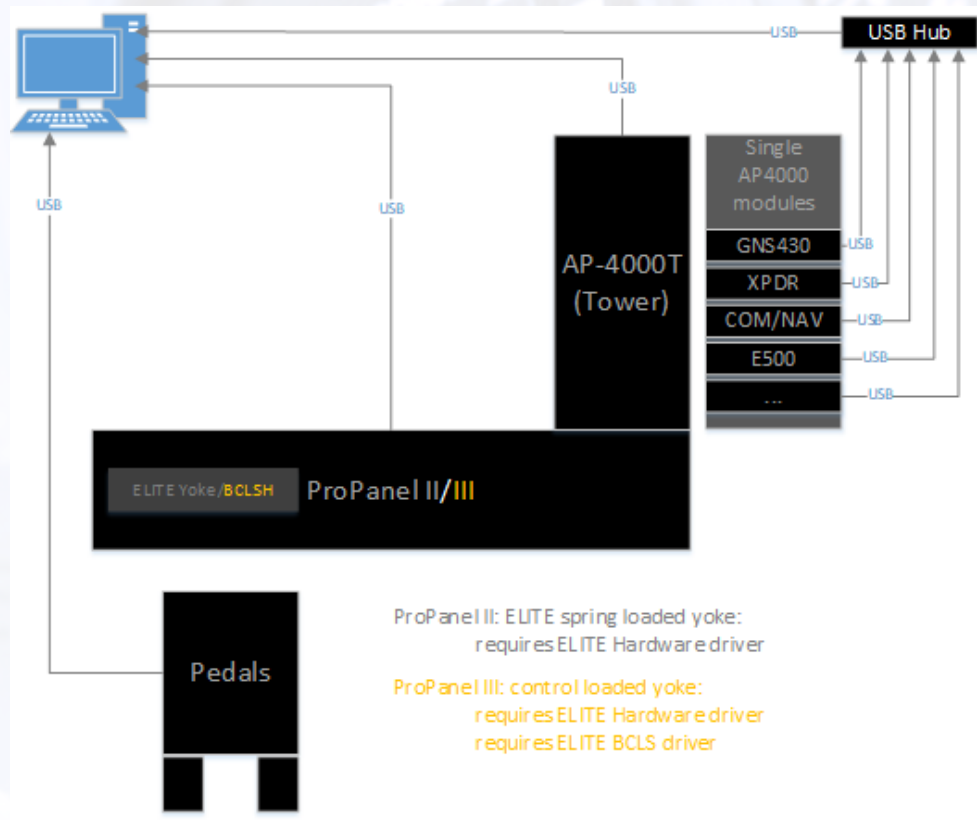


Figure 2.3: ELITE PCATD Hardware Connection

When using at least one ELITE hardware module (e.g. a ProPanel III, ELITE Pedals, AP-4000, any avionics module) the ELITE USB Hardware driver has to be installed manually (refer to chapter XXXX, ELITE hardware driver), and when using the ProPanel III with the control loaded yoke, the BCLSH driver (BCLS PP3) must be additionally installed via the ELITE installer. This can be done before or after having installed ELITE XTS.

2.2.3 Non-ELITE Hardware

Elite Pilot supports up to two game devices, e.g. one joystick and one set of pedals. It is not possible though to connect a yoke (Joystick), pedals and an additional throttle quadrant.

Figure 2.4 shows the ELITE game controller dialog with three game controllers listed (this dialog is presented at the first ELITE startup when one or more game controllers are detected and can also be opened by selecting the **Configuration Page > Computer > Game Controller**). In the example above you could select the

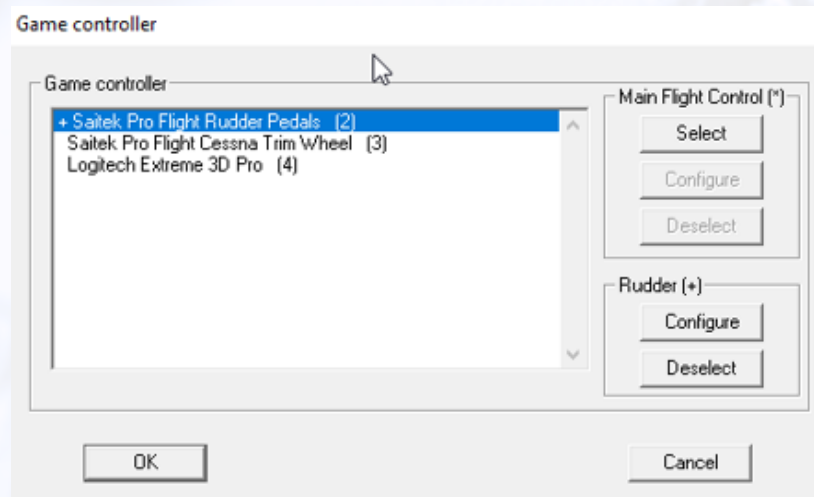


Figure 2.4: ELITE Game Controller Dialog

Logitech Extreme 3D Pro and assign it as **Main Flight Control** and select the Saitek Pro Flight Rudder Pedals and assign it to the **Rudder**. It is not possible though to additionally assign e.g. the Saitek Pro Flight Cessna Trim Wheel without removing the assignment of either the Logitech Extreme or the Saitek Rudder Pedals.

2.2.4 Installation and Runtime Media

Enclosed in the black box with the "ELITE" label you will find:

- one green USB "WIBU Key"
- one metallic USB "card"



Figure 2.5: Wibu Key



Figure 2.6: ELITE USB Card - Flap Open

The software is on the USB card.

Flip the USB tab around with your finger so it points outwards (see figure 2.6).

Then, insert the USB tab from the card into your computer's USB drive to begin the installation. If the USB card does not fit into a recessed USB port on the front of your computer, use a USB port in the back of the computer.

Each ELITE installation needs a matching pair of USB card and a WibuKey USB stick. The USB card contains the installation software and is required only for the installation. It can be removed from the PC once the installation is done.

The WibuKey USB stick must remain on a USB slot when running ELITE, otherwise the application will not start.

Every USB installation media is paired with a USB WibuKey, both having the same serial number (e.g. 82809). Installing the software from the media with serial number 82809 requires the WibuKey with the same serial number connected to the PC when running the ELITE software.

2.3 Software Installation Steps

The USB card must be plugged in for all installation steps (unless the installer has been provided by a download or the USB card content has been copied to your hard-disk). Insert the USB card and navigate to the drive assigned to the card.

Depending on the number of items purchased, the installer selection window will contain one or more items. The explanation below refers to the installation of the ELITE XTS core application and the GenView database (contains the terrain and navigation data).

2.3.1 ELITE Core

The first part installs ELITE core.

1. Open Windows Explorer and look for the drive assigned to the install card. The label will look like "ELITE_ xxxx", where xxxx corresponds to the serial number the software has been serialized with.
2. Open the folder "ELITE XTS v9.0_nnnn_xxxxx" (nnnn and xxxx are placeholders for numbers which vary from installation to installation) and double click on the file **Setup.exe**.
3. This leads to the screen shown in figure 2.7. Select **ELITE XTS v9.0 with Visual** and click on the **Continue** button. In most cases this list will contain the two items "ELITE XTS v9.0 with Visual" and "ELITE GenView Europe xxxx Areas" (or region(s) ordered). "xxxx" is a placeholder for the year and month of the navigation data cycle. More or less items may be listed, depending on the number of add-ons contained in the setup.

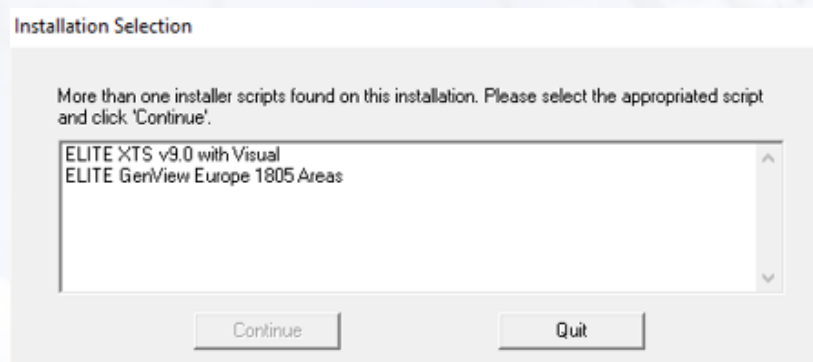


Figure 2.7: ELITE Core Installation Selection

4. The screen shown in figure 2.8 is just informational and lists the components which will be installed. This number of listed items may vary, depending on the items number and types contained in the installer file. Click **Next** to continue.

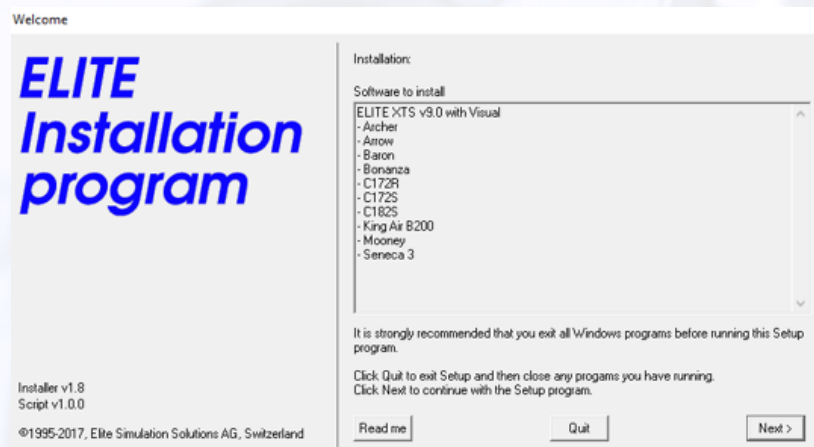


Figure 2.8: ELITE Core Installation Summary

5. The screen in figure 2.9 shows the license agreement. Click **Yes** to continue.

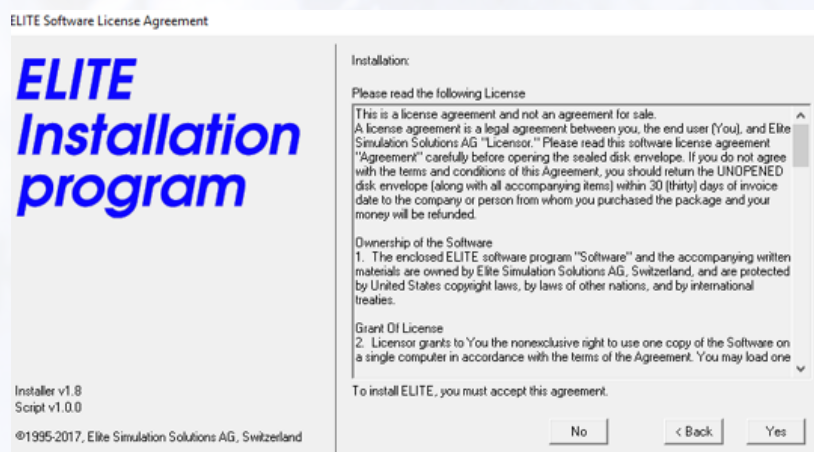


Figure 2.9: License Agreement

6. Now you can select the directory where the ELITE software shall be installed. Click on **Browse** to select a specific directory or just click **Next** to accept the suggested directory.

Note: If you are running Windows 7 or above and the user does not have administrator right, install the ELITE software into another folder, e.g. C:\ELITE or on another drive, e.g. D:\ELITE. This avoids possible security issues, e.g. missing rights to create and write files in a Windows OS managed directory.

Click on **Next** to continue.

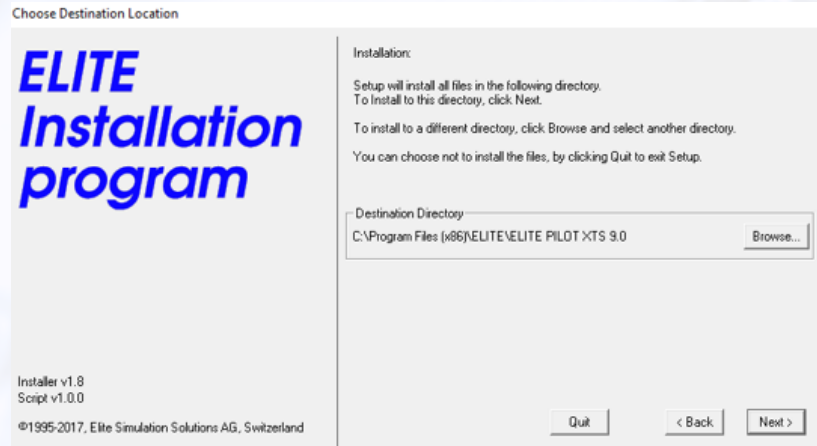


Figure 2.10: Select ELITE Installation Directory

If a pop-up as in figure 2.11 is displayed saying that the directory does not yet exist and if it shall be created, click on **Yes** to create the directory.

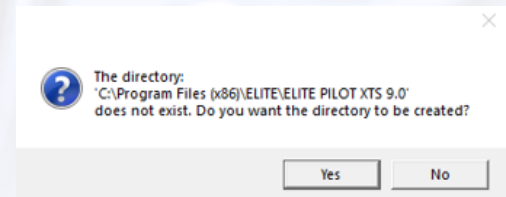


Figure 2.11: Confirm Directory Creation

7. In the next step you can select the program folder. Accept the default and click on **Next**.

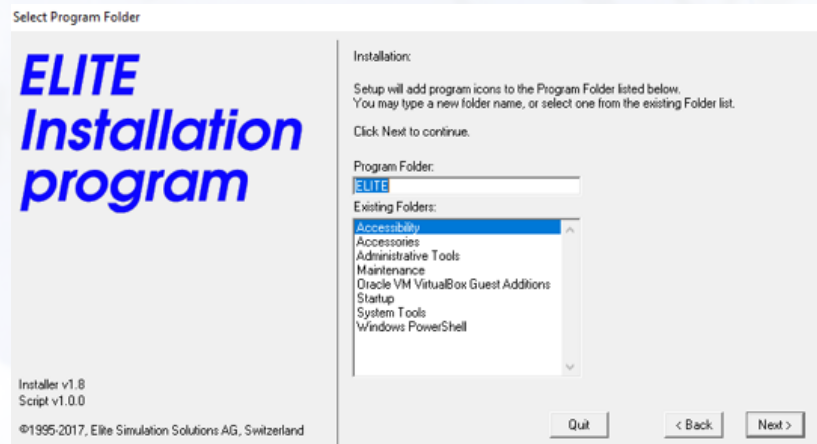


Figure 2.12: Program Folder Selection

8. Now you can choose if shortcuts shall be created on the Windows desktop. This will create a shortcut for the program executables and for all the PDF documents shipped with the product. If you do not want the PDF documents to appear on your desktop, de-select this option and feel free to create shortcuts manually when the installation has finished.

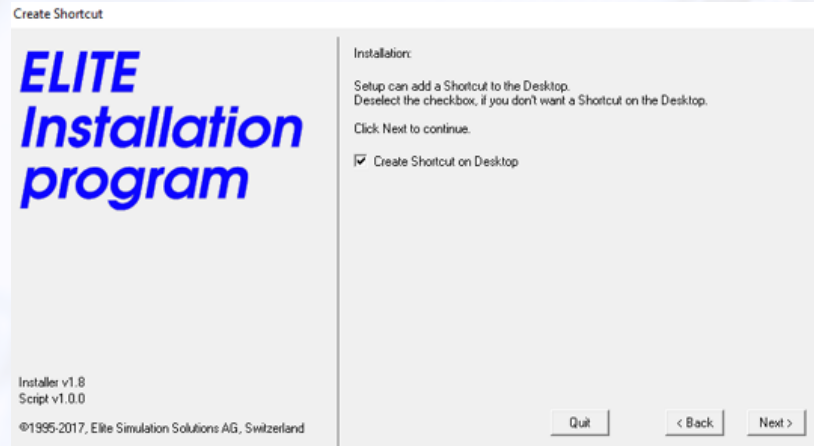


Figure 2.13: Windows Shortcuts Choice

9. The next form as in 2.14 allows you to choose if you have ELITE hardware connected to your PC. Select **Yes** if you have any ELITE hardware (e.g. one of the AP-4000 avionic modules, a ProPanel, ELITE Pedals, AP-4000 tower etc.) connected to the PC or not, if you are using third-party flight control hardware. The right choice is important because it may cause error messages to be displayed at ELITE startup if you choose ELITE USB Hardware **Yes** without any ELITE hardware connected. If you have ELITE hardware and choose not to install the driver, the hardware will not work. In this case, the driver can be installed manually afterwards. Click on the **OK** button to close the info box and to continue.

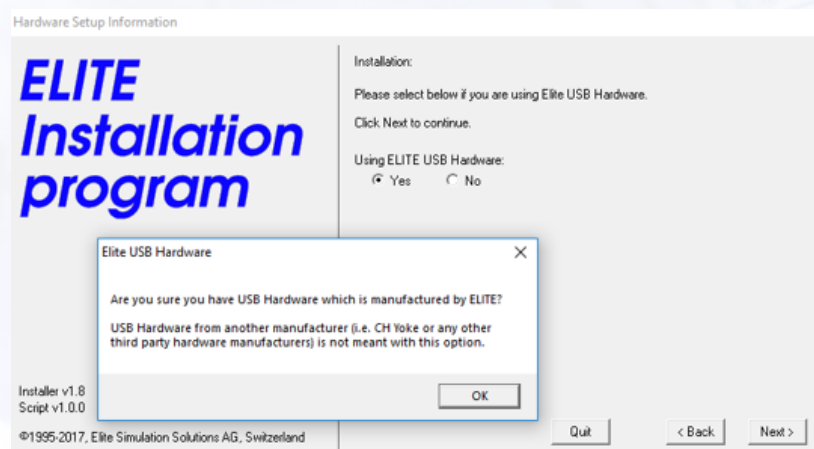


Figure 2.14: Confirm ELITE Hardware is connected

10. The next screen shows a summary of the selections made throughout the installation process. Click **Next** to continue. The files are now copied to your PC, this may take a while.

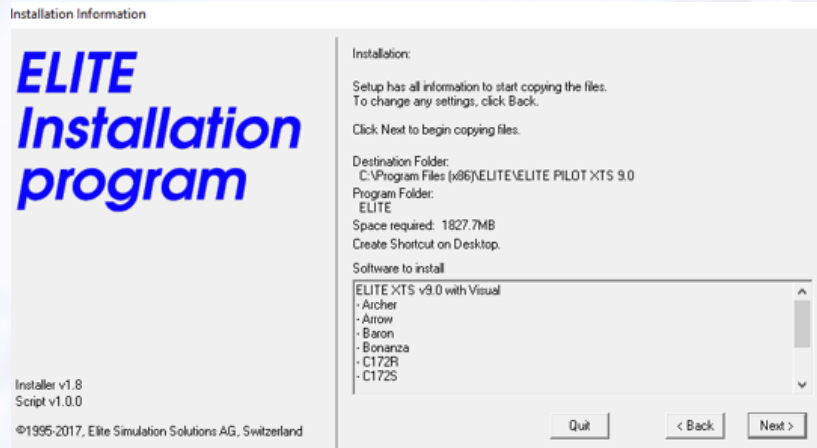


Figure 2.15: Selection Summary

11. Once done, the pop-up as in 2.16 is displayed. Click on **OK** to continue.

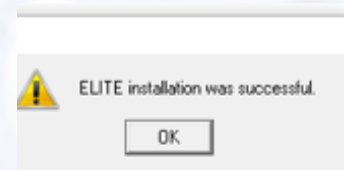


Figure 2.16: Core Installation Complete

12. The WIBU-KEY software setup is automatically started. Click on **OK** to go on.

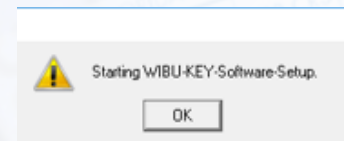


Figure 2.17: WibuKey Setup Start

2.3.2 WibuKey Installation

As the WibuKey installation will start automatically after the ELITE Core setup, the pop-up for the WibuKey will show immediately.

1. The first screen as in figure 2.18 shows the version being installed. Click **Next** to continue

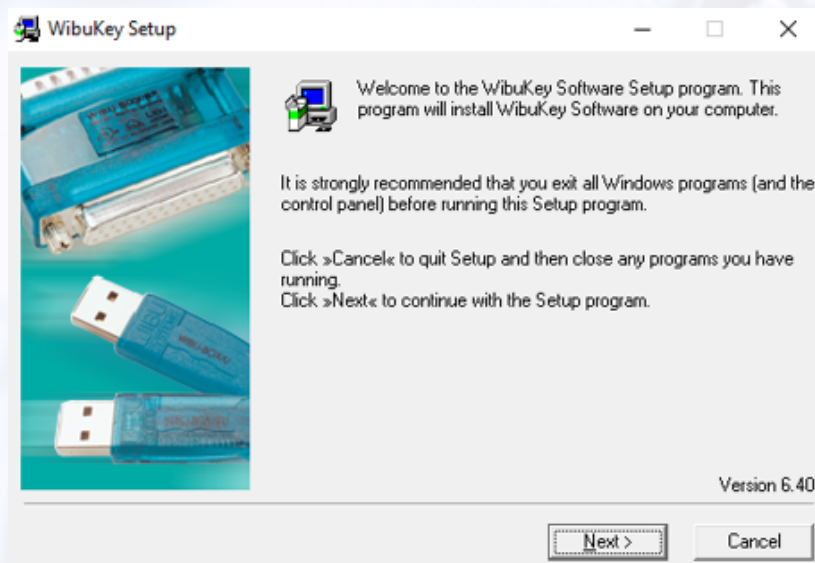


Figure 2.18: WibuKey Setup - Welcome Screen

2. As in figure 2.19 you can select additional languages if you want. Click **Next** to continue.

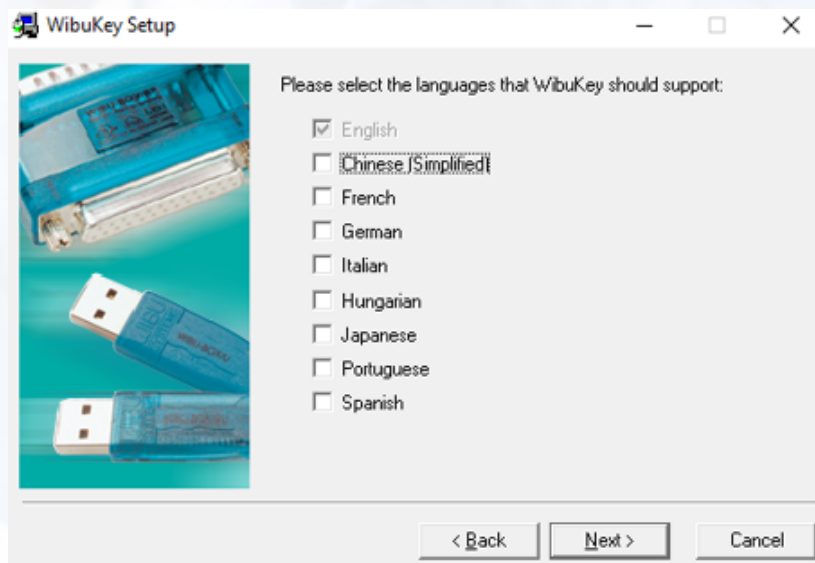


Figure 2.19: WibuKey Languages

3. The installation directory can be chosen on the screen from figure 2.20. It is best to leave it as the default value.

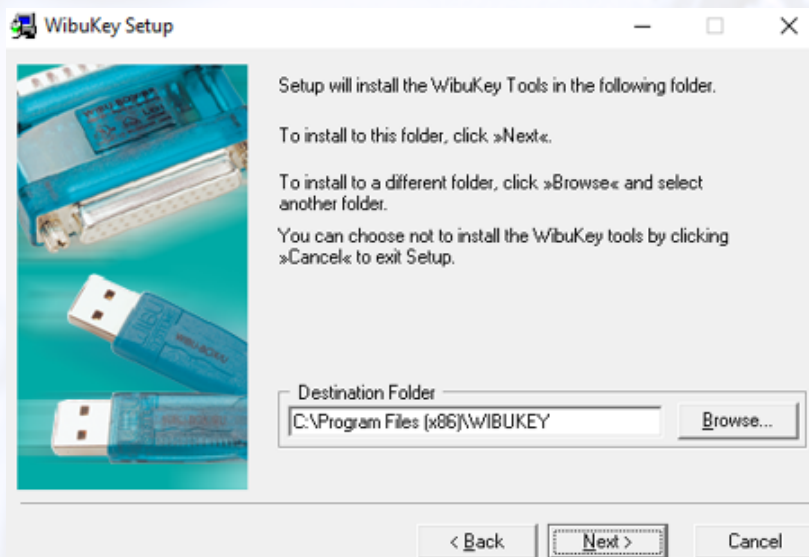


Figure 2.20: WibuKey Install Directory Selection

4. A pop-up window will ask for confirmation if the directory does not yet exist (see 2.21).

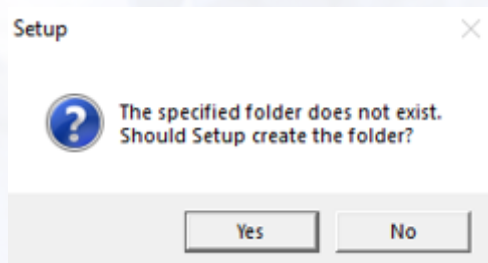


Figure 2.21: WibuKey Directory Creation Confirmation

5. On the next screen you can choose to install additional components for checking the WIBU Key over the network. This is not needed here, so remove the pre-selected checkmarks. Click on “Next” to continue.

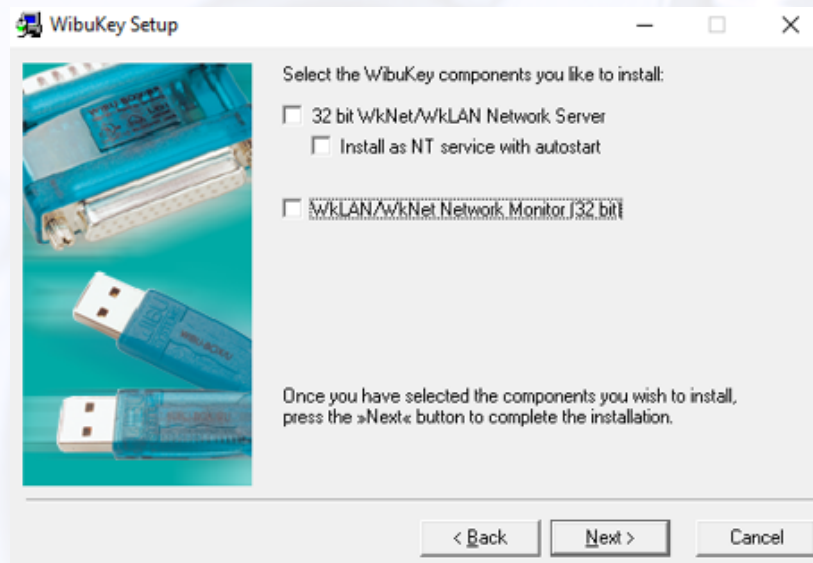


Figure 2.22: WibuKeyNetworkComponents

6. Finally, a selection summary is displayed. Click **Next** to continue

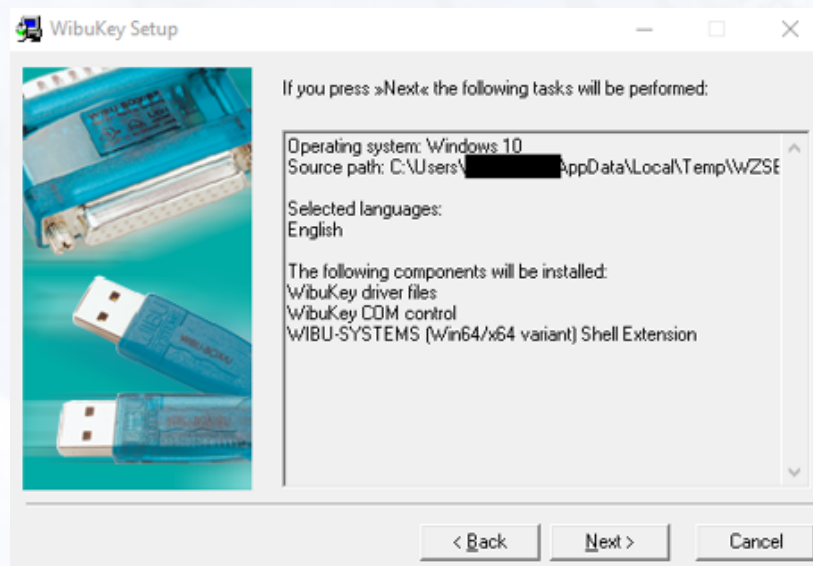


Figure 2.23: WibuKey Selection Summary

7. The required files are now copied to your computer. When done, click on **Next**.

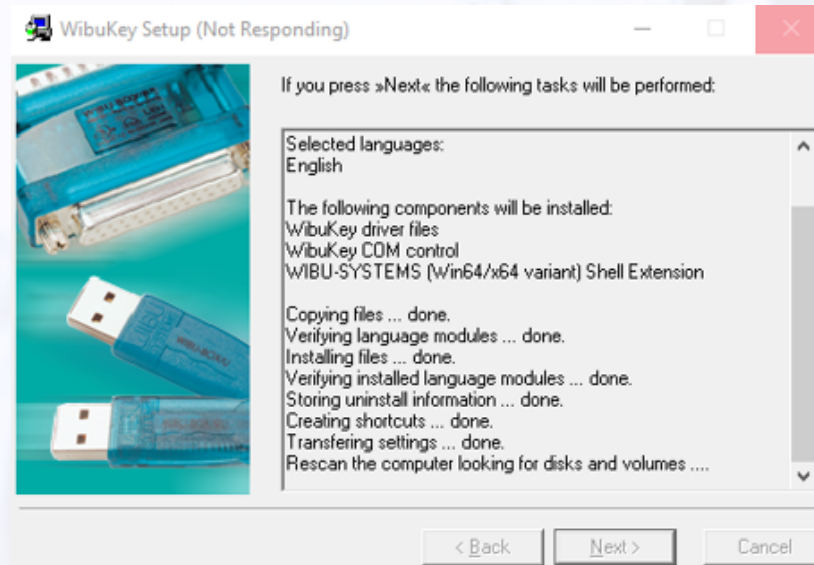


Figure 2.24: WibuKey Install Result

8. By default, the "Readme" text checkbox is selected. If you do not want to read the text, uncheck the box, then click **Finish**.

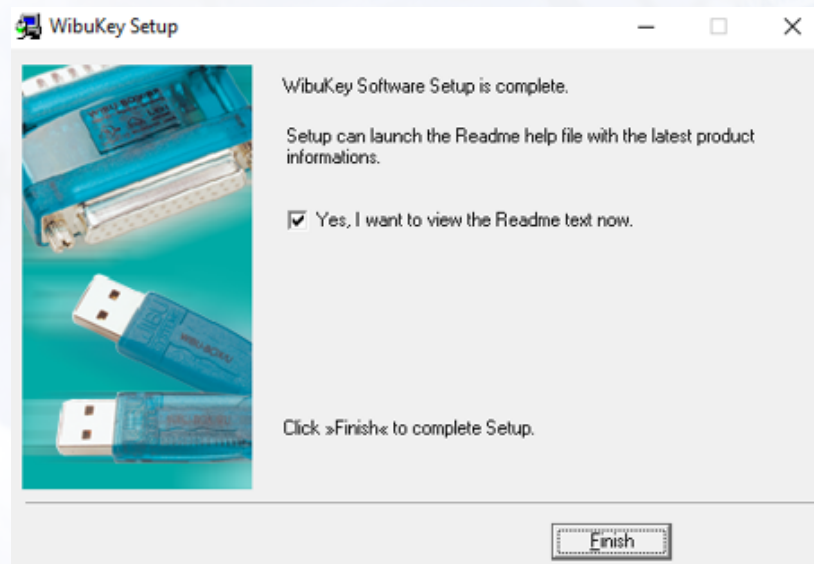


Figure 2.25: Readme Help File Display Selection

9. The installation is now complete; you can read the Readme text if you keep the checkmark in the checkbox. Click on **Finish** to finish the first installation step. Click **OK** to close the form.

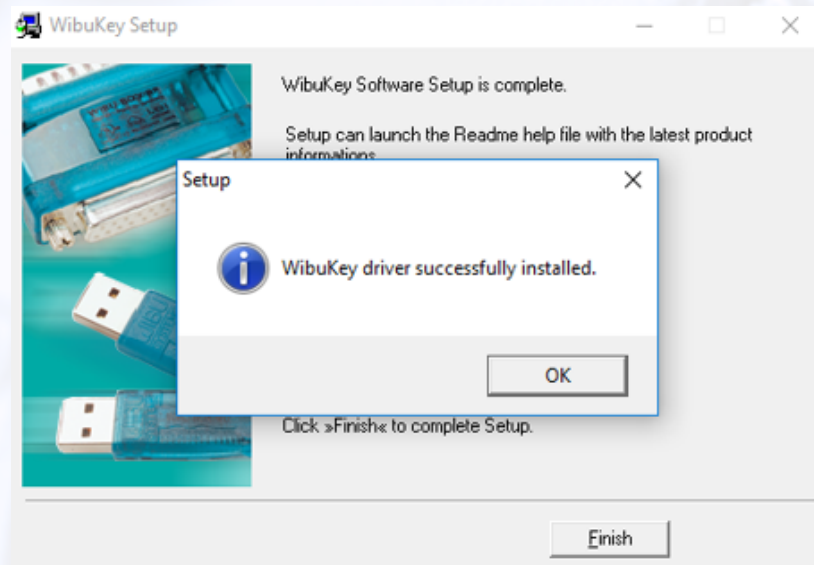


Figure 2.26: WibuKey Installation Complete

2.3.3 ELITE GenView

The second installation step consist in installing the scenery and navigation databases.

1. Double-click on the file **Setup.exe** again, as already done at the begin of the first installation step.
2. This time, select the second item "ELITE GenView xxxx for Elite". from the list and click **Continue**.

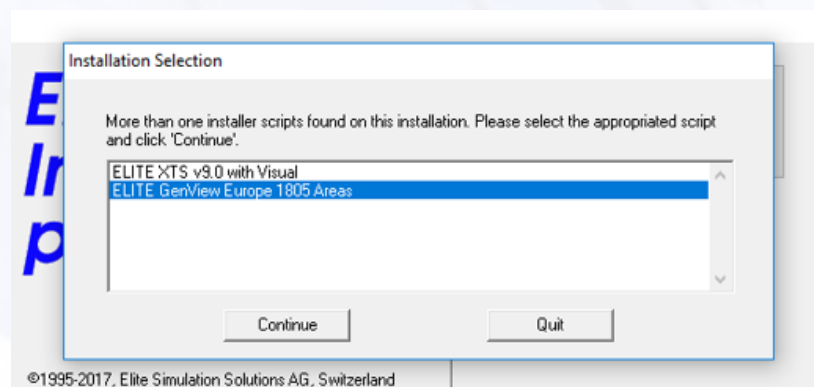


Figure 2.27: ELITE GenView Installation

3. This will lead to the display as shown in figure 2.28. Click **Next** to continue.

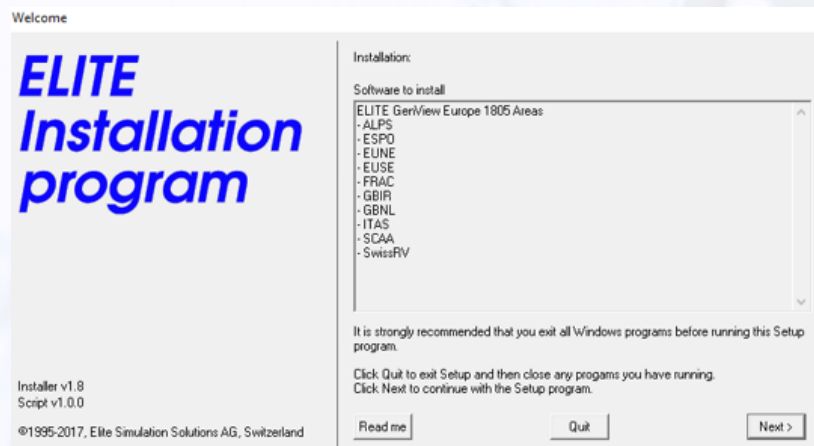


Figure 2.28: "Software to install" Display

4. Click on **Yes** to accept the ELITE License Agreement

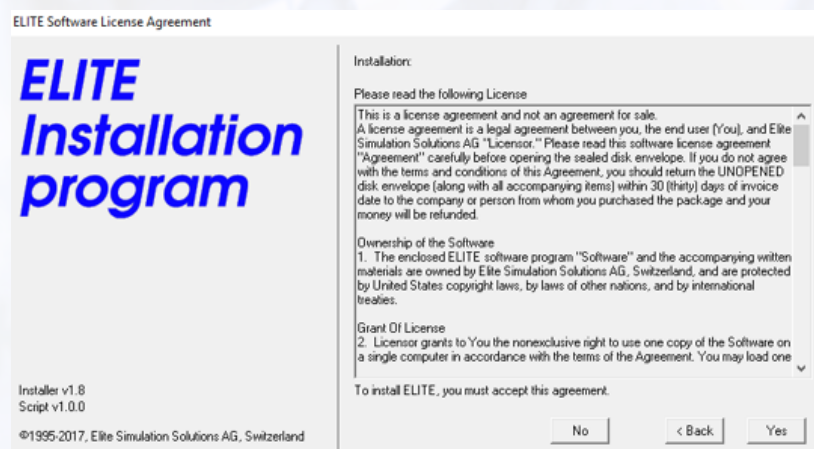


Figure 2.29: ELITE License Agreement

5. Next, the Jeppesen License Agreement is shown. Click **Yes** to continue.



Figure 2.30: Jeppesen License Agreement

6. Now you can select the destination directory. It is important to choose the same directory where the ELITE core components have been installed. This directory should already be pre-selected. Check if it is correct and click **Next** to continue.

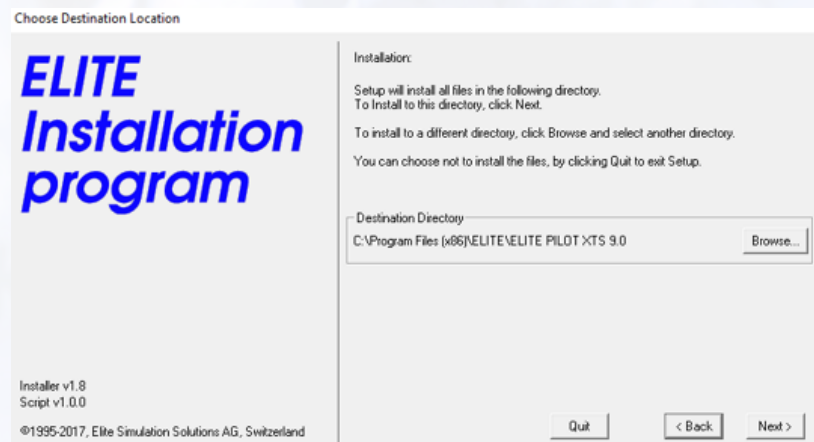


Figure 2.31: GenView Installation Directory

7. The next screen as in figure 2.32 shows the selection summary. Click **Next** to continue.

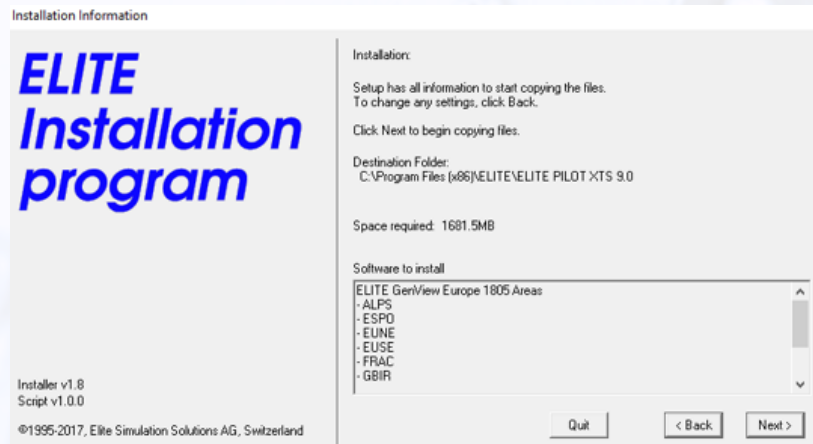


Figure 2.32: Selection Summary

8. The files are now copied to the selected directory. When finished, the message from figure 2.33 will be displayed. Click **OK** to terminate step two.



Figure 2.33: GenView Installation Finished

The installation is done and you can now start ELITE by double-clicking on the ELITE PILOT GV (or ELITE PILOT) shortcuts created on the desktop.

- ELITE PILOT GV (PROPGV.exe) includes the GenView visual and is the version to use when running ELITE as a standalone application on one computer.
- ELITE PILOT (PROP.exe) does not include any visual and is used when running ELITE with an external visual, either on the same or on one or more separate computers.

3 | ELITE Installation: Further Steps

3.1 ELITE Hardware Driver

If you are using ELITE hardware and have checked the corresponding box in the ELITE Core installation process, you will have to install the ELITE hardware drivers. The installer has been copied to the ELITE installation folder (by default C:\Program Files (x86)\ELITE\ELITE PILOT XTS 9.0) into the subfolder **Drivers > ELITE USB Driver E20416 WHQL**.

1. In your ELITE installation, go to **Drivers > ELITE USB Driver E20416 WHQL** and run the file **Setup** to start the installation.
2. Click **Next** on the welcome screen (figure 3.1).



Figure 3.1: Installation Welcome Screen

3. Accept the EULA and click on **Next**.

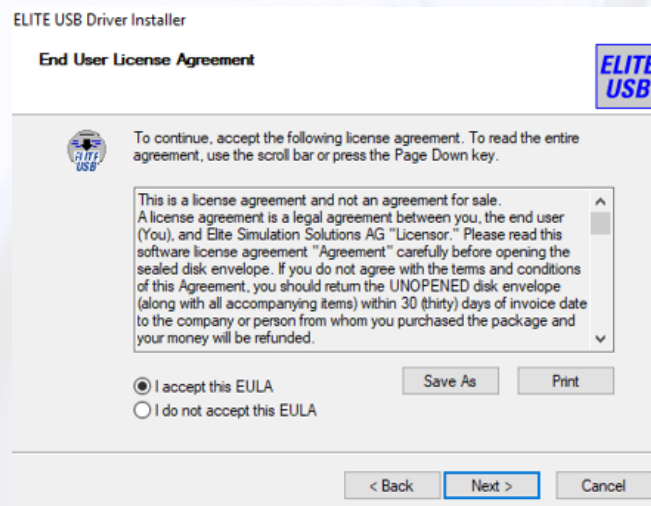


Figure 3.2: ELITE Hardware Driver - EULA

4. Once the files have been copied and the drivers installed, click **Finish** to complete the installation.

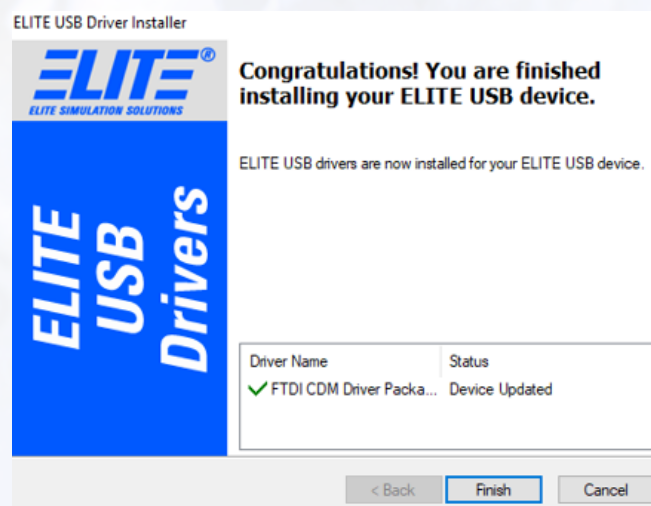


Figure 3.3: ELITE Hardware Driver Installation Complete

3.2 Garmin Trainer

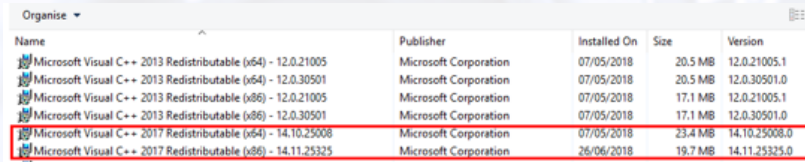
ELITE XTS includes a GNS430/540 (third party application) license, but before being able to use the add-on it must be installed and registered. The installer can be found on the installation media in the folder "Garmin". This folder includes two Garmin trainer versions:

- G500_G600SeriesTrainerBaseInstall_120
- GTNPCTrainerLite_6211

3.2.1 Prerequisites

The Garmin G500/G600 trainer requires the Microsoft Visual C++ 2017 redistributable package to be installed.

You can check if it is already available by opening the "Programs and Features" window and checking if there is already an application named "Microsoft Visual C++ 2017 Redistributable (x86) – 14.10.25008" or "Microsoft Visual C++ 2017 Redistributable (x86) – 14.11.25325" in the list. If none of these are listed, the package must be installed.



Name	Publisher	Installed On	Size	Version
Microsoft Visual C++ 2013 Redistributable (x64) - 12.0.21005	Microsoft Corporation	07/05/2018	20.5 MB	12.0.21005.1
Microsoft Visual C++ 2013 Redistributable (x64) - 12.0.30501	Microsoft Corporation	07/05/2018	20.5 MB	12.0.30501.0
Microsoft Visual C++ 2013 Redistributable (x86) - 12.0.21005	Microsoft Corporation	07/05/2018	17.1 MB	12.0.21005.1
Microsoft Visual C++ 2013 Redistributable (x86) - 12.0.30501	Microsoft Corporation	07/05/2018	17.1 MB	12.0.30501.0
Microsoft Visual C++ 2017 Redistributable (x64) - 14.10.25008	Microsoft Corporation	07/05/2018	23.4 MB	14.10.25008.0
Microsoft Visual C++ 2017 Redistributable (x86) - 14.11.25325	Microsoft Corporation	26/06/2018	19.7 MB	14.11.25325.0

Figure 3.4: Microsoft C++ 2017 redistributable packages

The ELITE installation media includes the "Visual C++ redistributable package 14.11.25325" setup file in the subfolder "Drivers".

1. Start the installation by double clicking the file "vcredist.x86_msvc1411".
2. Accept the license terms and click **Install**.
3. The installation takes a couple of seconds. Click **Close** when done.

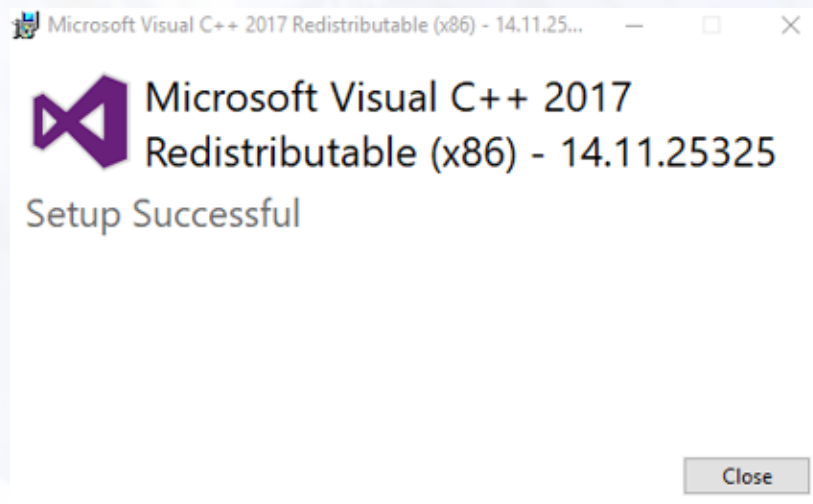


Figure 3.5: VC++ 2017 installation completed

The package should now appear in the application list in "Programs and Features".

3.2.2 GNS430/530

The GNS430/530 required by ELITE is included in the G500/G600 Garmin Trainer package. Another GNS430/530 trainer version will not work.

Please follow the steps below to successfully install the Garmin Trainer package:

1. Run the executable "G500_G600SeriesTrainerBaseInstall_120.exe" to start the installation. This will show the welcome screen. Click **Next** to continue.

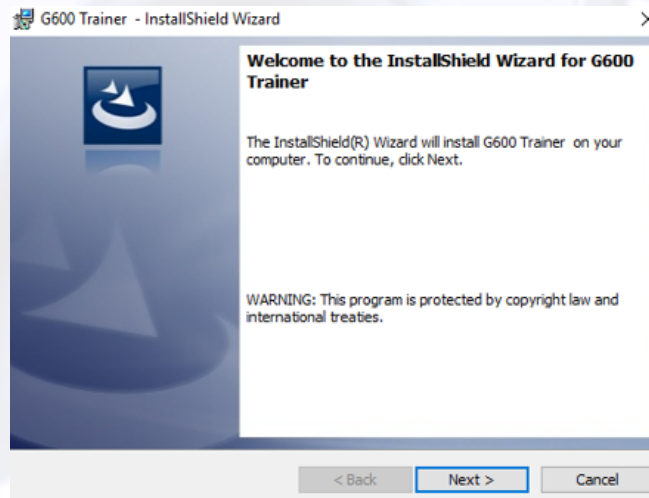


Figure 3.6: G500/G600 installer welcome screen

2. Accept the license agreement and click **Next**.



Figure 3.7: G600 Trainer license agreement

3. Select the destination directory and click **Next**.

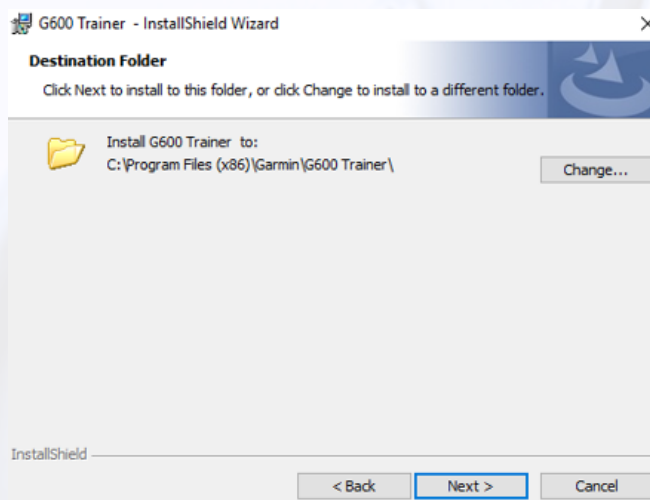


Figure 3.8: Install directory selection

4. Click on **Install** to proceed.

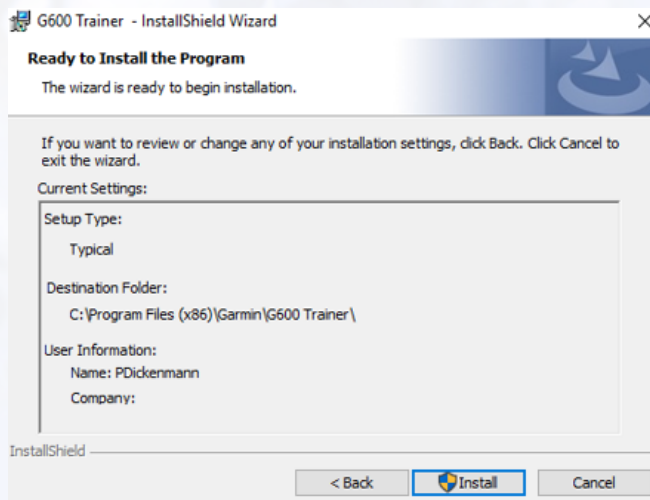


Figure 3.9: Ready to install screen

5. The installer begins to copy the files. Click on **Finish** to exit the installer.

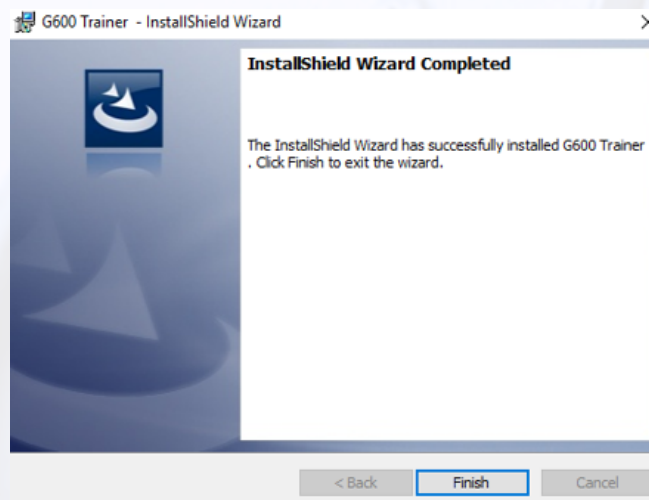


Figure 3.10: Installation completed

Registering the GNS430/530 add-on

When starting ELITE with a selected GNS430/530 equipped aircraft before having activated the GNS430/530 application, the message as shown in 3.11 will be displayed:

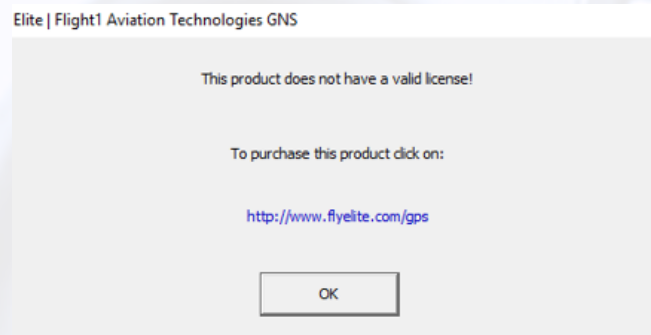


Figure 3.11: GNS430/530 Activation Message

You can run the ELITE Software without registering the GNS430, but the message shown in figure 3.11 will pop up on every start of ELITE and the GNS430/530 will remain off/black.

The GNS430/530 activation code is available in the file "GNSGTN_ActivationKeys.txt", located in the installer root directory.

Name	Date modified	Type	Size
Drivers	26/07/2018 16:08	File folder	
ELITE XTS	26/07/2018 16:08	File folder	
EUR_Nav1805	26/07/2018 16:08	File folder	
Garmin	26/07/2018 16:08	File folder	
IAS	26/07/2018 16:09	File folder	
Manuals	26/07/2018 16:09	File folder	
GNS-GTN_ActivationKeys.txt	26/07/2018 16:09	TXT File	1 KB
Setup.exe	14/07/2017 19:38	Application	321 KB

Figure 3.12: GNS430/530 Activation Code File

To activate the product, navigate to the ELITE installation subfolder <ELITE root folder>\Init\F1TGNS\ and run the executable "Activate.exe".

ELITE > ELITE PILOT XTS 9.0 > Init > F1TGNS			
Name	Date modified	Type	Size
Activate.exe	12/06/2018 16:34	Application	808 KB
console.cfg	12/06/2018 16:34	CFG File	1 KB

Figure 3.13: GNS430/530 Activation App

Then, a pop-up as shown in 3.14 will open.

Type the code contained in the file "GNS430-530Activation.txt" from the ELITE installation media into the registration code field. Also enter your name and email address.

As soon as everything has been entered the **Activate Now** and ***This Computer has no Internet Connection** buttons will be enabled.

If your computer is connected to the internet, click **Activat Now** to activate the Garmin Add-on for ELITE. In case your computer does not have an internet connection, refer to section 3.2.2.

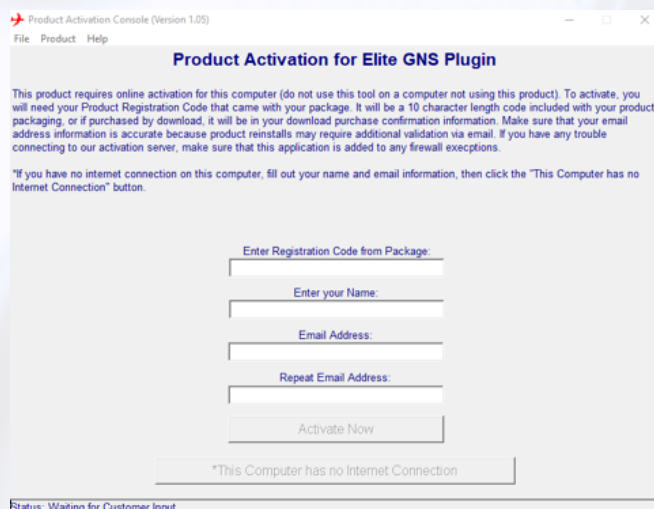


Figure 3.14: GNS430/530 Product Activation Console

Manual Registration of GNS430/530 Add-on

As your computer is not connected to the internet, the GNS Add-on has to be registered manually.

Click on ***This Computer has no Internet Connection** on the pop-up screen as shown in figure 3.14.

Selecting this button opens a second form (as shown in figure 3.15).

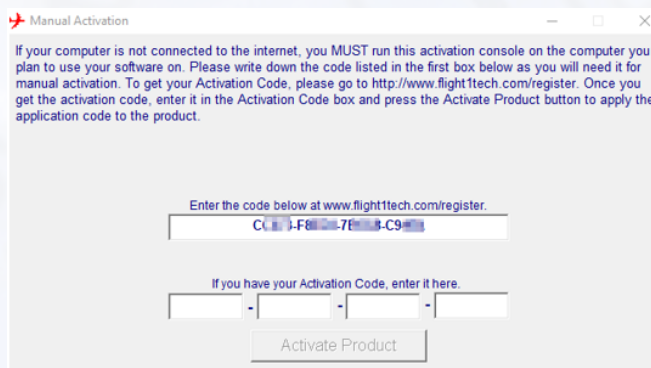
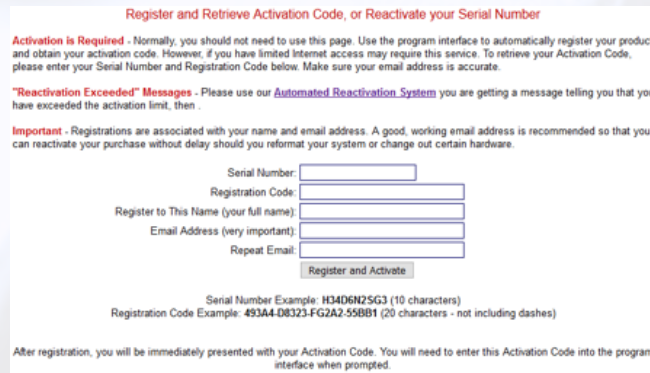


Figure 3.15: GNS430/530 Manual Activation Form

To get the code from Flight1, you will need a computer with internet access. Please get a computer which has an internet connection and perform the steps below:

1. Open a web browser and enter the URL www.flight1tech.com/register
2. Enter your serial number shipped with ELITE XTS, the registration code from the "Manual Activation" form and your name and email address
3. Click on **Register and Activate**
4. You will then get an activation code, which you may enter into the "Manual Activation" form. Please keep in mind that the code for the manual activation has to be entered on the computer you will use the software on (not necessarily the one with internet access).



Register and Retrieve Activation Code, or Reactivate your Serial Number

Activation is Required - Normally, you should not need to use this page. Use the program interface to automatically register your product and obtain your activation code. However, if you have limited Internet access may require this service. To retrieve your Activation Code, please enter your Serial Number and Registration Code below. Make sure your email address is accurate.

"Reactivation Exceeded" Messages - Please use our **Automated Reactivation System** you are getting a message telling you that you have exceeded the activation limit, then .

Important - Registrations are associated with your name and email address. A good, working email address is recommended so that you can reactivate your purchase without delay should you reformat your system or change out certain hardware.

Serial Number:

Registration Code:

Register to This Name (your full name):

Email Address (very important):

Repeat Email:

Serial Number Example: H34D6N25G3 (10 characters)
Registration Code Example: 493A4-D8323-FG2A2-55BB1 (20 characters - not including dashes)

After registration, you will be immediately presented with your Activation Code. You will need to enter this Activation Code into the program interface when prompted.

Figure 3.16: Flight1 Registration Page

3.2.3 GTN650/750

The ELITE installation media also includes the installer for the GTN650/750 devices (Figure 3.17), but no registration key. A registration key for this product can be purchased at <http://flyelite.com/gps/>. Installing the software and selecting an aircraft with a GTN650/750 will lead to the error message shown in figure 3.11.

Installing the GTN Trainer Software

The installer can be found in the ELITE installation media in the subfolder "GTNPCTrainerLite_6211", located in the subfolder "Garmin".

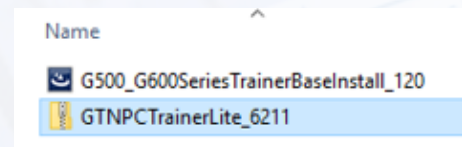


Figure 3.17: GTN650/750 Installer

In order to install the GTN Trainer Software, please follow the steps below:

1. Unzip the archive into any desired folder.
2. Navigate to the folder with the unzipped files and double click on the file **autorun**. This will show the setup start screen as shown in figure 3.18.
3. Select the item **Install GTN Trainer** from the list to start the installation.



Figure 3.18: Garmin GTN Installer Start Screen

4. Click **Next** on the welcome screen.

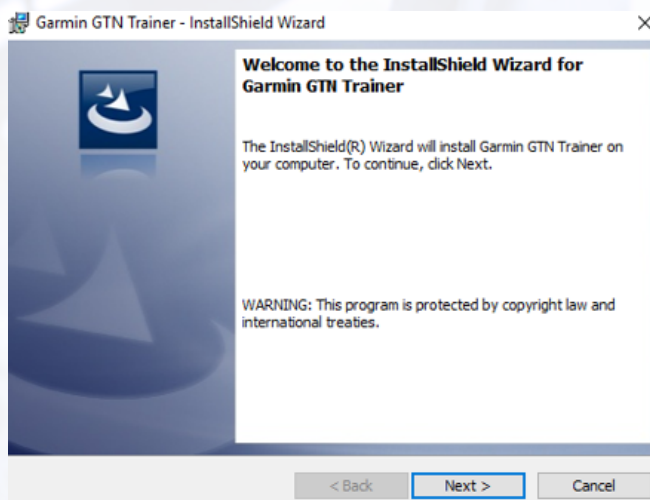


Figure 3.19: GTN Installer Welcome Screen

5. Accept the license terms and click on **Next**.



Figure 3.20: License Agreement

6. Select the installation path and click **Next**.

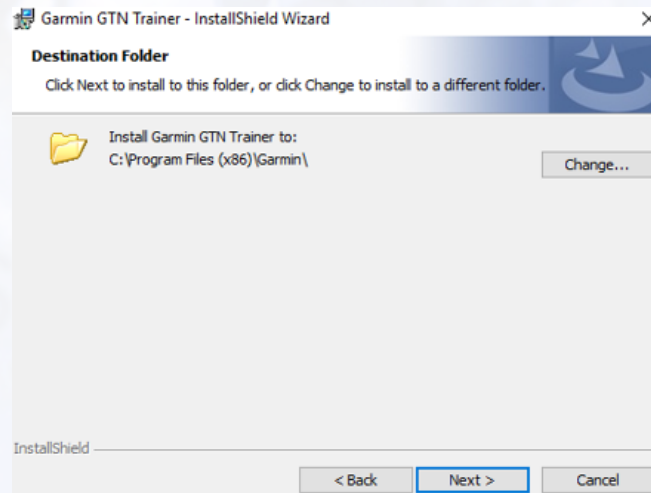


Figure 3.21: Installation path selection

7. Select the database folder.

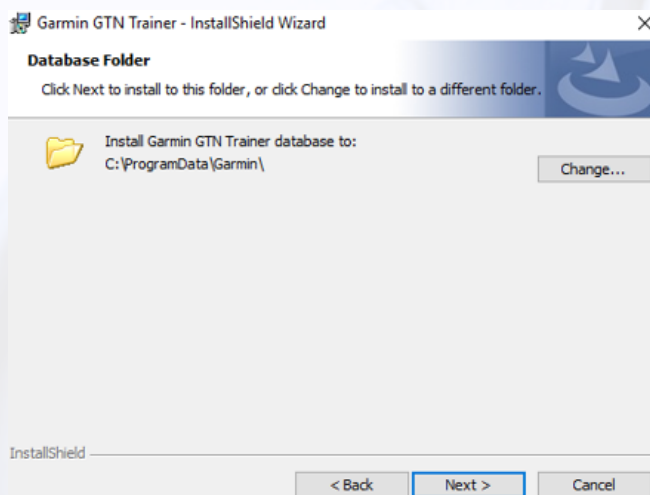


Figure 3.22: Database folder selection

8. Click on **Install** to continue

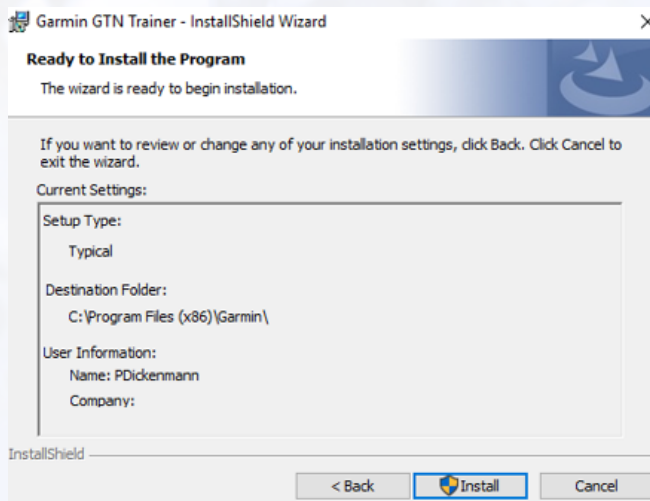


Figure 3.23: Installation path selection

9. The files are copied and the system configured, what may take some time. Click on **Finish** to close the installer.

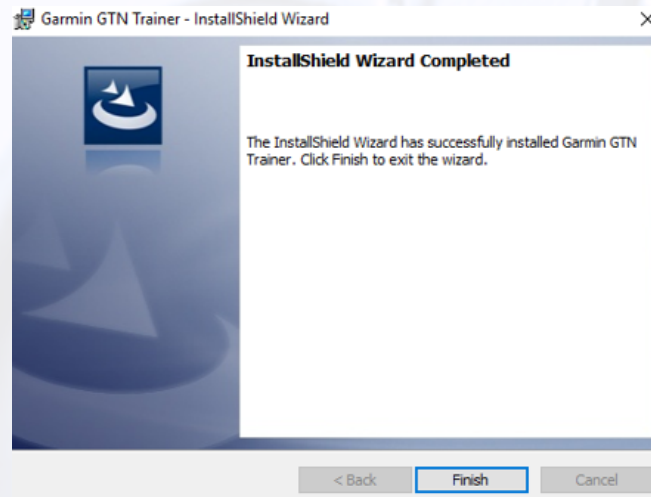


Figure 3.24: Database folder selection

10. Once the installation has completed, you may want to install the User's Guide, the Pilot's Guide or other documents. This is voluntarily and not needed for the operation of the GTN. When you are done, select **Exit** on the Garmin Installer Window to close it.

Registering the GTN for ELITE

11. Before using the GTN750 it must be registered. The registration procedure corresponds to the GNS430 registration procedure. Refer to section 3.2.2 (Registering the GNS430/530 add-on) for further details.

4 | Additional Modules

Installing additional modules is the same principle as when installing the core ELITE XTS application.

1. Start the installer
2. Select the component to install
3. Click on **Continue** and follow the on-screen instructions

The following sections should give an insight and some detailed steps for a couple of additional modules usable with the ELITE Software.

4.1 ELITE ProPanel III (BCSL-H)

4.1.1 Prerequisites

The ELITE ProPanel III Control Loaded Yoke driver requires the Microsoft Visual C++ 2013 (x86) Redistributable package to be installed.

Make sure to have Microsoft Visual C++ 2013 (x86) Redistributable package installed or install the package now from the ELITE Installation Media's subfolder "Drivers".

The BCLSL-H Driver may be downloaded from [ELITE's Help and Learning Center](#).

4.1.2 Installation

If you have an ELITE ProPanel III with a control loaded yoke (BCLSL-H), you may run the setup now and follow the instructions below.

1. Start the ELITE installer and select **ELITE ProPanel 3 Control Loading Addon – BCLSL Drivers**

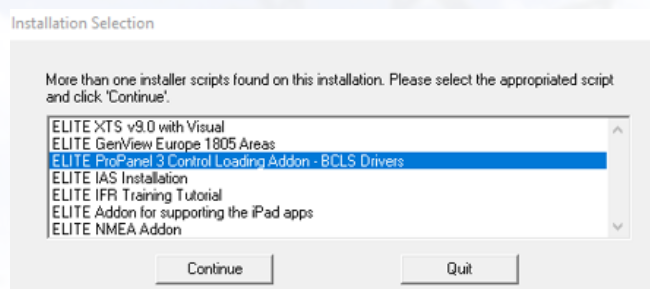


Figure 4.1: ProPanel III / BCLSL add-on

2. Click on **Next** on the welcome screen

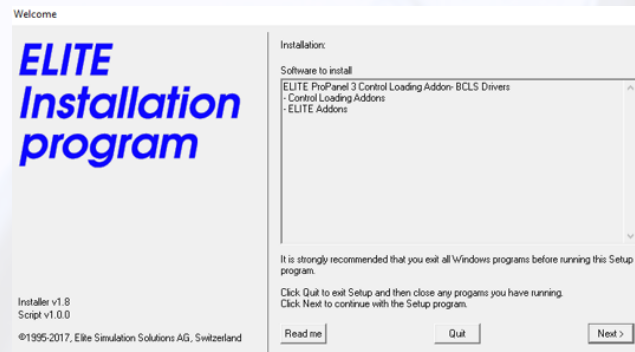


Figure 4.2: ELITE installer welcome screen

3. Read the license agreement and click on **Yes**.

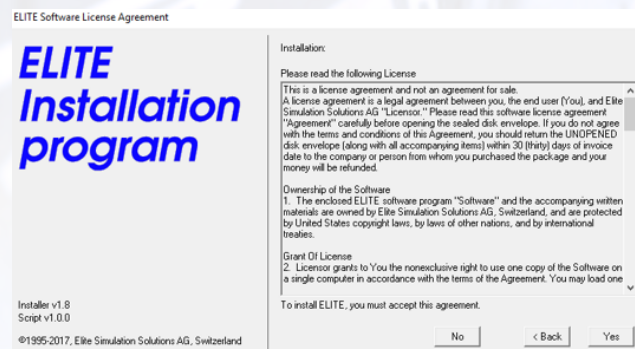


Figure 4.3: ELITE software license agreement

4. The next screen should already have the current ELITE XTS installation path prefilled in the Destination Directory box. The driver must be installed in the same directory as ELITE XTS, but you can choose the directory here in case you have multiple XTS copies installed. Click **Next** to continue.



Figure 4.4: Driver installation directory

5. The installation takes just a couple of seconds. Click on **OK** to terminate the installation.

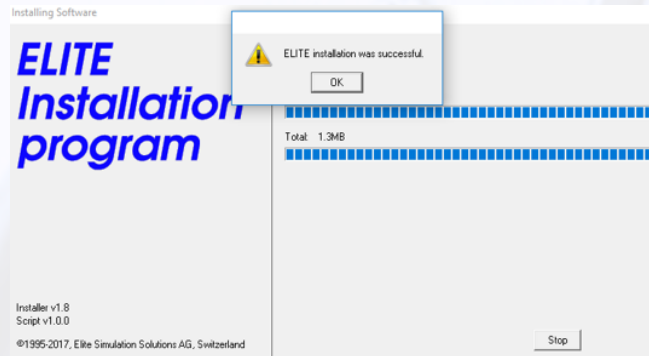


Figure 4.5: Installation completed

The next time you start ELITE the yoke should perform a calibration run and a BCLS-H button configuration dialog will be shown, where the button assignments can be changed.

4.2 iPad App Installation

4.2.1 Overview

The ELITE Software can send data to a variety of iPad applications:

- AirTrack
- ForeFlight
- FSWidgets
- Garmin Pilot
- OzRunways
- SimControlX
- SkyCharts

Except SimControlX the communication is a one-way communication, meaning that ELITE sends data to the iPad, but cannot receive data back.

4.2.2 Prerequisites

In order to successfully use the iPad Addon for ELITE, the following two points are required to be working:

- The according app has to be installed on the iPad
- Network connection between the iPad and the computer running ELITE must be established (usually a WLAN connection)

4.2.3 iPad Addon Installation

The iPad addon for ELITE is also installed from the ELITE Installer "Setup.exe". The following steps are to give a more detailed insight into the process:

1. Start the ELITE installer and select the item **ELITE Addons for supporting the iPad apps**. Click on **Continue** to proceed.

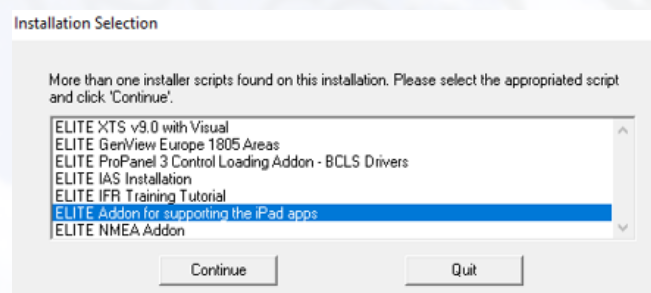


Figure 4.6: ELITE iPad App Support Installer

2. Go through the installation, accept the License Agreement and make sure the addon for the iPad apps is installed into the same ELITE directory. If the addon is not installed into the same folder, the iPad apps will not be able to communicate with ELITE.
3. The installation takes a couple of moments. Click **OK** to successfully terminate the installer.

Once the installation has finished, the addon is available within ELITE.

4.2.4 Configuration within ELITE

Configuration for App: Garmin Pilot

To configure ELITE to send data to the Garmin Pilot application on the iPad, open the iPad configuration page in ELITE.

There are two ways to establish a communication between ELITE and the Garmin Pilot app:

- Broadcast to all devices in the configured network segment
- Send data to single configured devices

The first method is the easier, as no specific IP address has to be defined in the ELITE iPad configuration page. In this case ELITE sends the data to all active clients in the current network segment (subnet).

Both methods require the iPad configuration page to be opened. Do this by executing the following steps:

1. Right click on the instrument panel and select the **iPad Configure** menu item (or press ALT+Y).



Figure 4.7: iPad Configuration Menu Item

2. This opens the iPad application Configuration page as shown in figure 4.8.

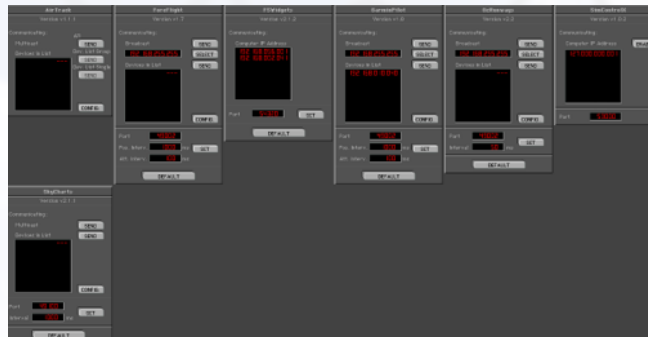


Figure 4.8: iPad Application Configuration Page

3. **Broadcast Method:**

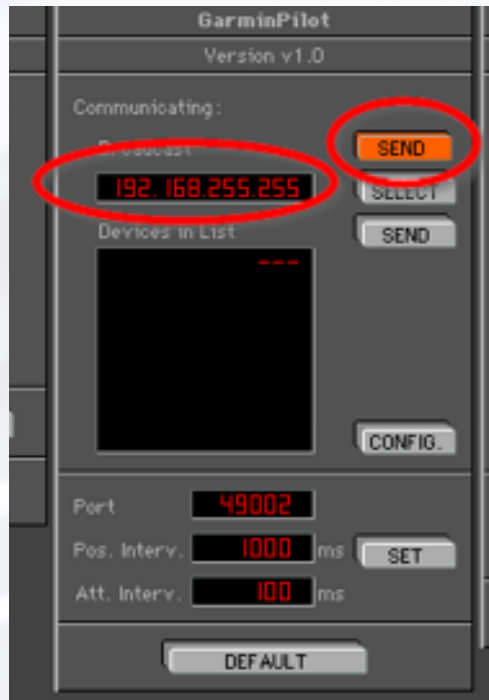


Figure 4.9: Broadcast Method Activation

- On the iPad Configuration Page, click on the button **Send** above the **Select** button (as shown in figure 4.9).
- This should be enough to get the Garmin Pilot app on the iPad connected to ELITE. ELITE will broadcast the messages destined to the iPad to all computers in the same network segment, what may have a small impact on the network performance.

4. Single Endpoints Method:

- Start Garmin Pilot on the iPad and select the **Use Flight Simulation Data** icon.

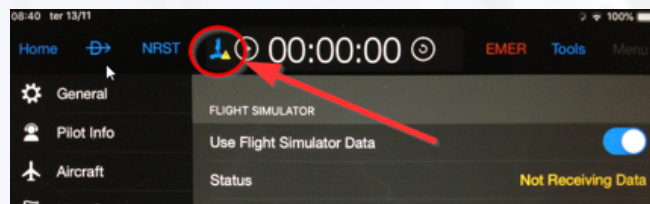


Figure 4.10: GarminPilot Flight Simulator connection icon

- Then select the menu item **Settings** from the dropdown list.

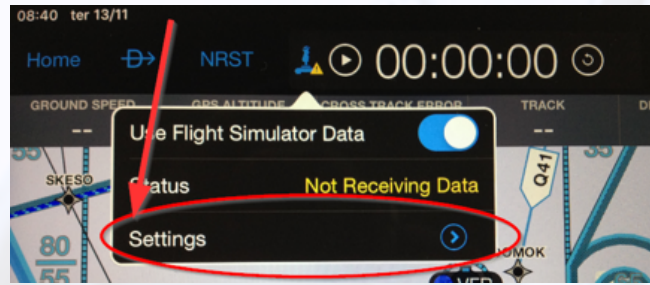


Figure 4.11: Flight Simulator Settings menu item

- Start Garmin Pilot on the iPad and select the **Use Flight Simulation Data** icon.

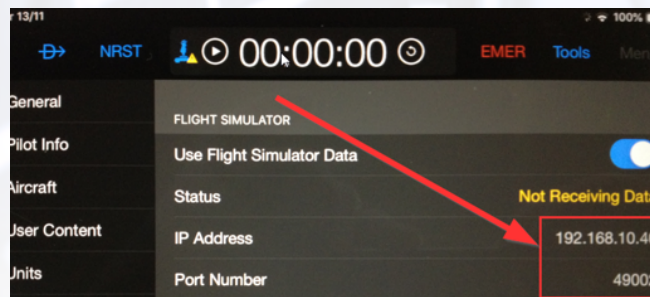


Figure 4.12: iPad IP and port number

- Then select the menu item **Settings** from the dropdown list.

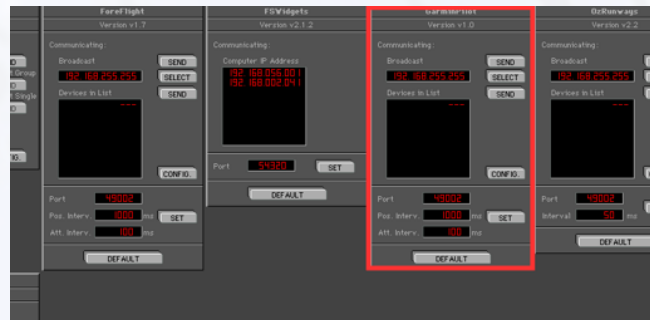


Figure 4.13: Garmin Pilot section

- Click the **Config** button [1] to open the "Set IP Addresses" dialog and click on **New** [2].

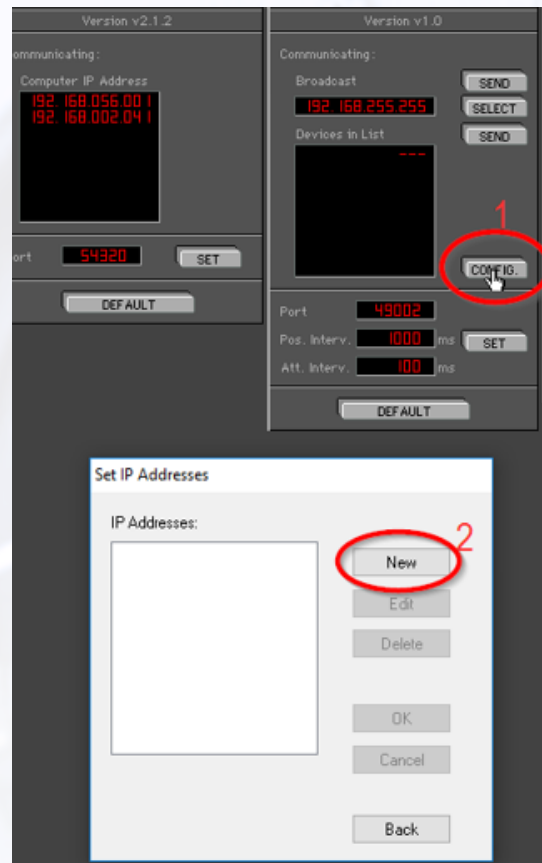


Figure 4.14: IP address dialog

- Enter the IP address from the iPad (refer to figure 4.12) into the IP address field at the bottom of the dialog and click on the OK button when done.

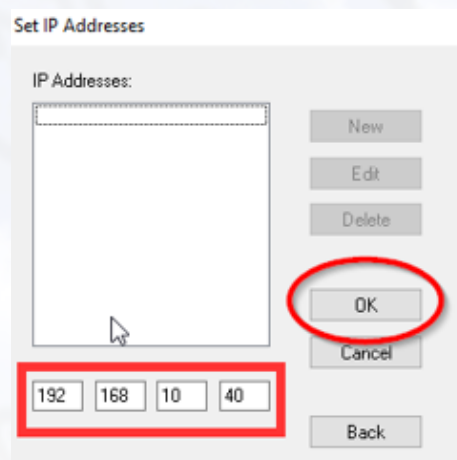


Figure 4.15: iPad's IP number in

- The IP number will be added to the IP number list. Click **Back** when done.
- The IP number entered is now added to the devices list, meaning that ELITE will send data to this device as soon as the communication is activated. Check if the Port number in ELITE matches the one on the iPad Garmin Pilot settings and set it accordingly if this is not the case.



Figure 4.16: ELITE Garmin Pilot device list

- To actively start the communication between ELITE and the Garmin Pilot app, click on the button **Send** below the **Select** button.



Figure 4.17: Start communication with Garmin Pilot app

- Return to the iPad and check if the communication could be established. This is marked by the icon without the exclamation mark and by the text "receiving data" when you tap on the simulation icon.

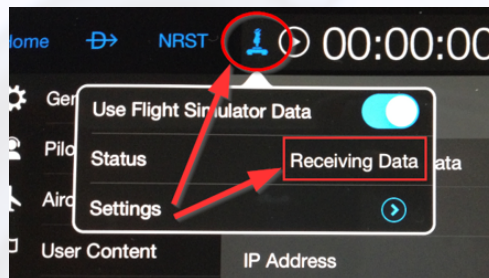


Figure 4.18: Communication ok icon and "Receiving Data" message

5 | Move ELITE to another Computer

You can install and run ELITE on different computers, but to run the software you must:

- Connect the USB WIBU key
- Install the ELITE Software on the new computer
- Transfer the GNS540/530 and or GTN650/750 license

The latter is only required if you will use an aircraft equipped with one of these devices. Refer to the top of this document on how to install the ELITE application.

5.1 Transfer GNS & GTN License

The license transfer consists in deactivating the software on the inactive and reactivating the license on the active computer.

5.1.1 License Deactivation

1. Make sure you have your registration code. The code is available in the ELITE installation media or you can retrieve it from the file "customer.cfg" contained in the ELITE XTS installation subfolder "<ELITE ROOT>\Init\F1TGNS" or "<ELITE ROOT>\Init\F1TGTN".
2. Make sure your computer is connected to the internet.
3. Execute the application **Activate.exe** located in the ELITE installation subdirectory "<ELITE XTS ROOT>\Init\F1TGNS" or "<ELITE XTS ROOT>\Init\F1TGTN".

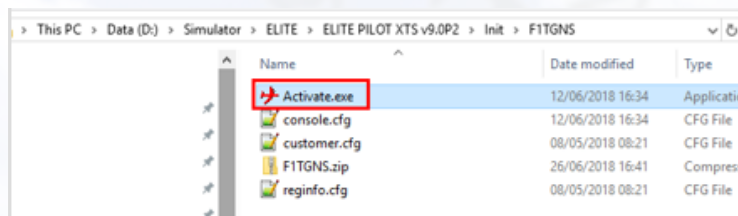
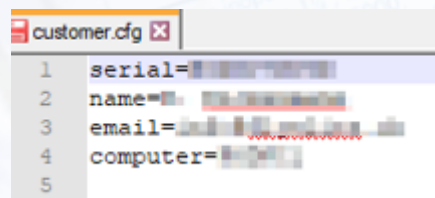


Figure 5.1: Flight1 GNS Application

4. When running **Activate.exe** a window as in figure 5.2 will appear. Press **OK** to close it.

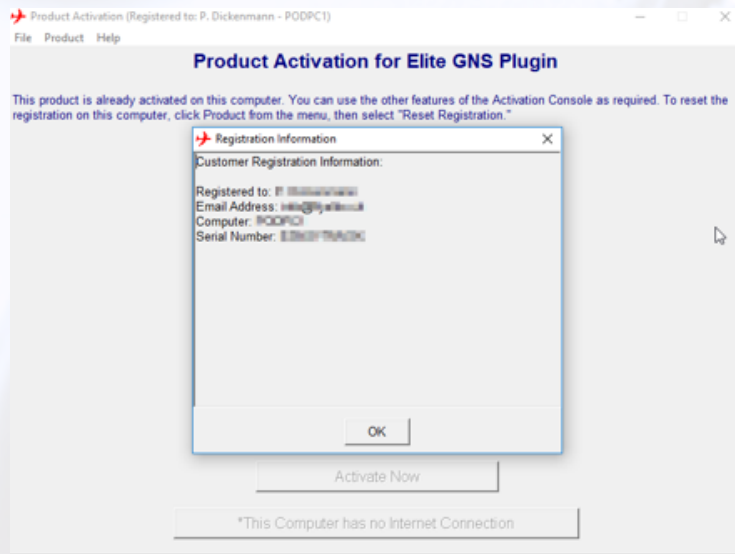


Figure 5.2: Flight1 Registration Information

5. Then click on the menu item **Product** on the top left corner of the window and select **Reset Registration**.
6. Confirm that you want to reset the registration by clicking on the **Yes** button.

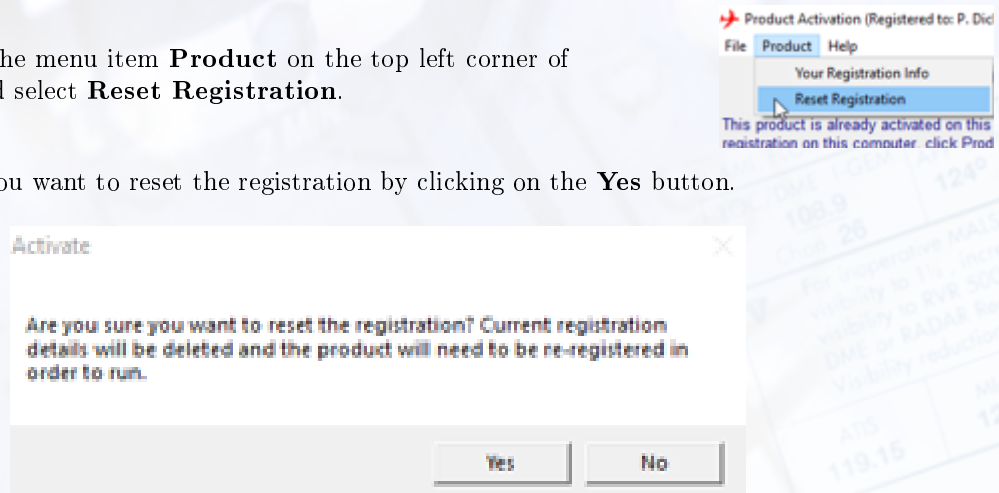
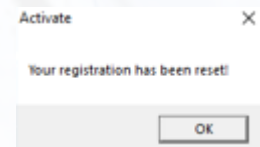


Figure 5.3: Flight1 Reset Registration

7. The registration has now been reset. Click **OK** to close the dialog.



5.1.2 License Activation

Follow the instructions in section 3.2 to activate the license on the new computer.

6 | Conclusion

6.1 Troubleshooting

As this document is to provide guidance during the installation of ELITE XTS, it does not include any details of the possibilities within ELITE or how to use the software. Please refer to the Operator's Manual for further guidance on this topic.

In case you run into any issues, please check the document "Troubleshooting" on your USB Card / Download File.

The most frequent questions and issues are discussed in these documents. Please feel free to contact the ELITE Support Team or check out [ELITE's Help and Learning Center](#) if the topic is not discussed in either of the two manuals.

ELITE Technical Support

www.flyelite.ch/support

support@flyelite.ch

6.2 Notes

Please feel free to add any notes here:

