

**Installation Notes**  
Microsoft® SQL 2014 Express Basic  
Release: 05/2017



EPLAN Software & Service GmbH & Co. KG  
Technical Information

## Installation Notes

Microsoft® SQL 2014 Express Basic  
Release: 05/2017



Copyright © 2017 EPLAN Software & Service GmbH & Co. KG

EPLAN Software & Service GmbH & Co. KG assumes no liability for either technical or printing errors, or for deficiencies in this technical information and cannot be held liable for damages that may result directly or indirectly from the delivery, performance, and use of this material.

This document contains legally protected proprietary information that is subject to copyright. All rights are protected. This document or parts of this document may not be copied or reproduced by any other means without the prior consent of EPLAN Software & Service GmbH & Co. KG.

The software described in this document is subject to a licensing agreement. The use and reproduction of the software is only permitted within the framework of this agreement.

RITTAL® is a registered trademark of Rittal GmbH & Co. KG.

EPLAN®, EPLAN Electric P8®, EPLAN Fluid®, EPLAN Preplanning®, EPLAN PPE®, EPLAN Pro Panel®, EPLAN Smart Wiring® and EPLAN Harness proD® are registered trademarks of EPLAN Software & Service GmbH & Co. KG.

Windows 7®, Windows 8®, Windows 8.1®, Windows 10®, Windows Server 2008 R2®, Windows Server 2012®, Windows Server 2012 R2®, Microsoft Windows®, Microsoft® Excel®, Microsoft® Access® and Notepad® are registered trademarks of the Microsoft Corporation.

PC WORX®, CLIP PROJECT®, and INTERBUS® are registered trademarks of Phoenix Contact GmbH & Co.

AutoCAD® and AutoCAD Inventor® are registered trademarks of Autodesk, Inc.

STEP 7®, SIMATIC® and SIMATIC HW Konfig® are registered trademarks of Siemens AG.

InstallShield® is a registered trademark of InstallShield, Inc.

Adobe® Reader® and Adobe® Acrobat® are registered trademarks of Adobe Systems Inc.

TwinCAT® is a registered trademark of Beckhoff Automation GmbH.

Unity Pro® is a registered trademark of Schneider Electric.

RSLogix 5000® and RSLogix Architect® are registered trademarks of Rockwell Automation.

All other product names and trade names are trademarks or registered trademarks of their respective owners.

EPLAN uses the Open Source software 7-Zip (7z.dll), Version 16.00, Copyright © by Igor Pavlov. The source code of 7-Zip is subject to the GNU Lesser General Public License (LGPL). The source code of 7-Zip and details on this license can be found on the following Web site: <http://www.7-zip.org>

EPLAN uses the Open Source software Open CASCADE, Version 7.1.0, Copyright © by Open CASCADE S.A.S. The source code of Open CASCADE is subject to the Open CASCADE Technology Public License. The source code of Open CASCADE and details on this license can be found on the following Web site: <http://www.opencascade.org>

EPLAN provides an import function which uses eCI@ss. Usage of the eCI@ss standard is subject to license and requires registration and ordering in the DownloadPortal: <http://www.eiclassdownload.com>

EPLAN uses the dotNetRDF © library: <http://www.dotnetrdf.org>, Copyright (c) 2009-2013 dotNetRDF Project (dotnetrdf-develop@lists.sf.net). The source code is subject to the MIT license: <https://opensource.org/licenses/MIT>

EPLAN uses Google Chromium ©, Version 51. <https://www.chromium.org>, Copyright © 2012 The Chromium Authors. The source code is subject to the BSD license.



EPLAN uses the Chromium Embedded Framework ©, Version 2704.  
<https://bitbucket.org/chromiumembedded/cef>, Copyright © 2008-2014 Marshall A. Greenblatt. Portions  
Copyright © 2006-2009 Google Inc. The source code is subject to the BSD license.

EPLAN uses CEFSharp ©, Version 51. <https://cefsharp.github.io>, Copyright © 2010-2016 The  
CefSharp Authors. The source code is subject to the BSD license.

EPLAN uses Microsoft Unity ©, Version 4.0.1. <https://github.com/unitycontainer/unity>, Copyright ©  
Microsoft. The source code is subject to the Apache license, Version 2.0.

The complete license text of the Open Source licenses is available under:  
<Installation directory>\bin\License.txt



# Table of Contents

<b>Preamble .....</b>	<b>5</b>
<b>New SQL Server stand-alone installation.....</b>	<b>7</b>

## Preamble

Dear users,

The team at EPLAN Software & Service GmbH & Co. KG is pleased to welcome you as a new user.

This document describes how to install the Microsoft SQL Server 2014 Express on your local computer under the following installation requirements and what has to be considered:

For the present description we use the Microsoft® SQL Server 2014 Express version.

SQL Server Express is a free edition of SQL Server and is suitable for the development and operation of small desktop, Web and server applications. \*1

Microsoft® SQL Server is a product of Microsoft®, for further support, please contact to the company Microsoft®.

<https://msdn.microsoft.com/en-us/library/bb545450>

We wish you success with the EPLAN platform products!

Your EPLAN Software & Service team

\*1 Quelle: <http://www.microsoft.com/de-de/server-cloud/products/sql-server-editions/overview.aspxVoraussetzungen>

vom 23.10.2015

## Installation Notes

Microsoft® SQL 2014 Express Basic  
Release: 05/2017



All explanations based on a local installation.

At your Computer Microsoft .NET Framework 4.5.2 must be activated.

For installation you need local administrator rights.

For information to download the Microsoft SQL Server 2014 Express, see the Download SQL EXPRESS.pdf on:

<http://www.eplan.info/quickstart/en-us>

More informations about the software requirements and approvals can be found on the homepage

[http://www.eplan.help/help/platform/2.7/en-US/help/EPLAN\\_Help.htm](http://www.eplan.help/help/platform/2.7/en-US/help/EPLAN_Help.htm)

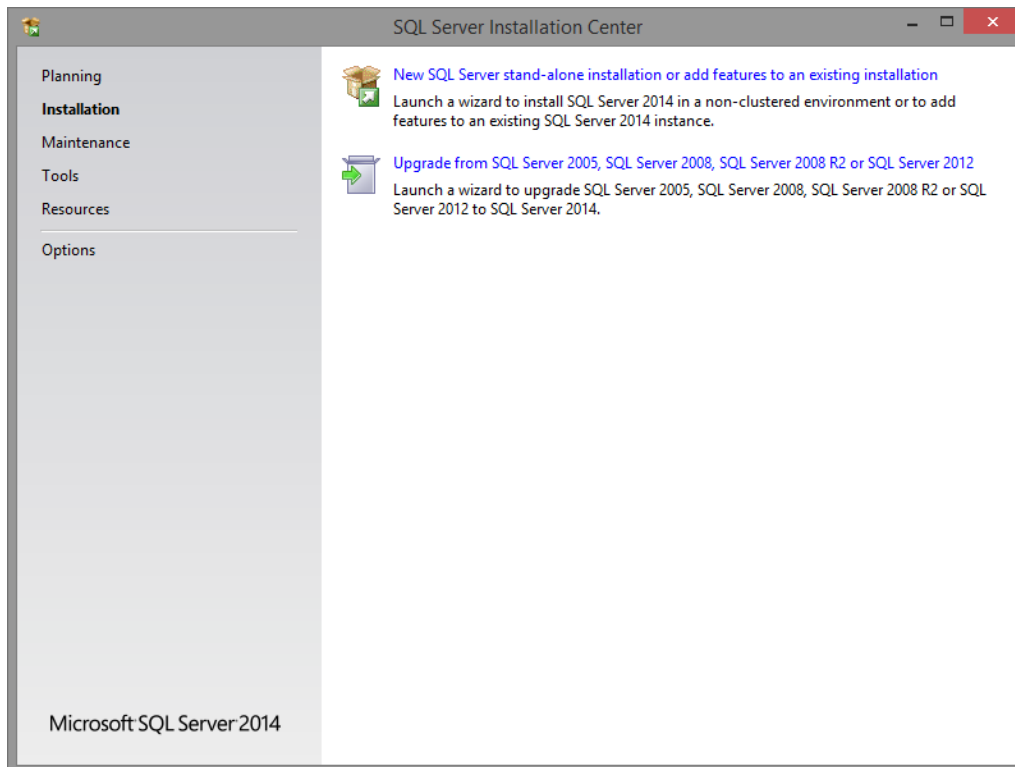
You can find the topic *Software Requirements and Approvals* by clicking on the **NEWS** on the start page and calling the chapter *Other New Features and Information*.

## Installation Microsoft SQL Server 2014 Express

### New SQL Server stand-alone installation

In this installation, all data is stored locally.

After extracting the installation files and start the setup.exe please perform a stand-alone SQL Server installation:

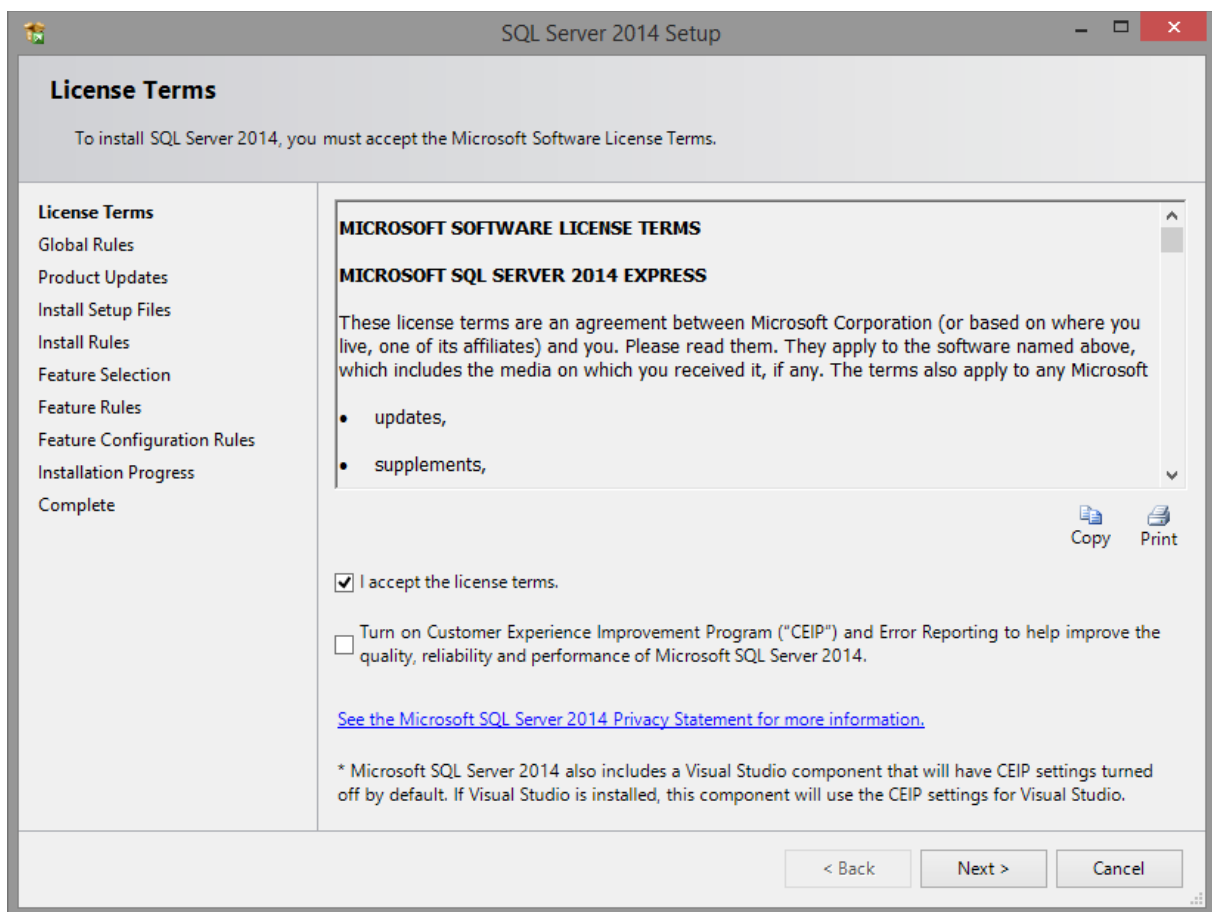


## Installation Notes

Microsoft® SQL 2014 Express Basic  
Release: 05/2017

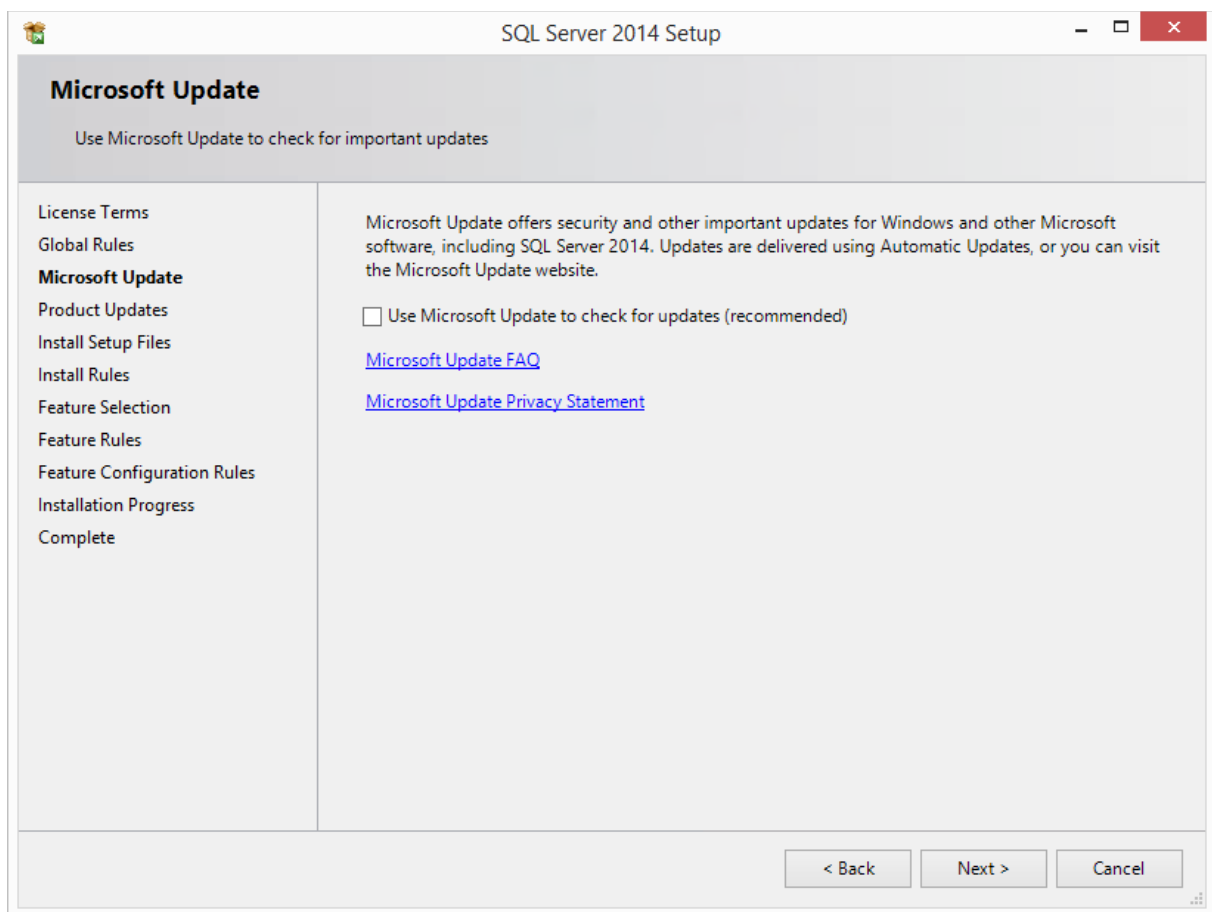


Please accept the license agreement and select **Next**, and set the installation continued.





Do not look for Microsoft Updates and continue the installation by clicking **Next**.



## Installation Notes

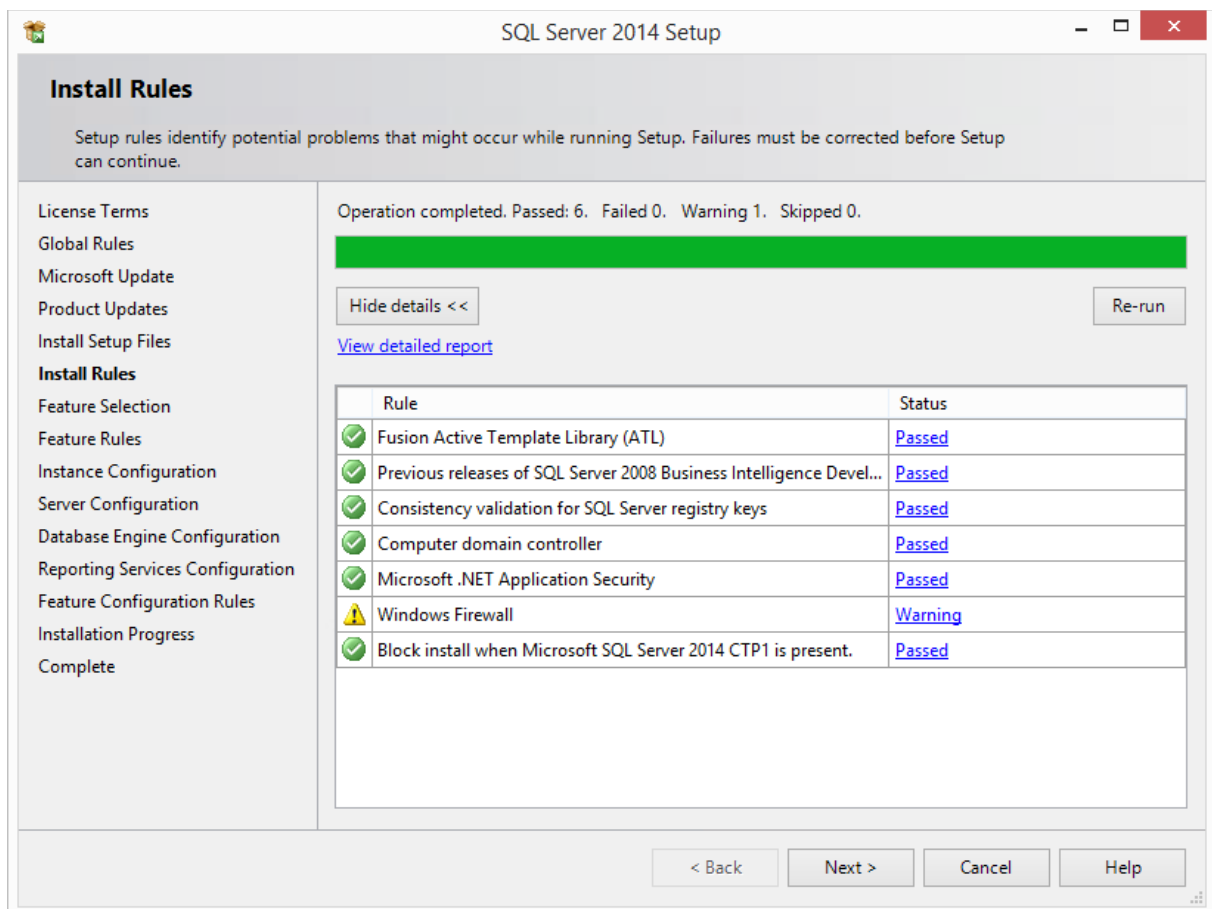
Microsoft® SQL 2014 Express Basic  
Release: 05/2017



In the next step the rules are checked.

If this is error-free, you continue the installation by clicking **Next**.

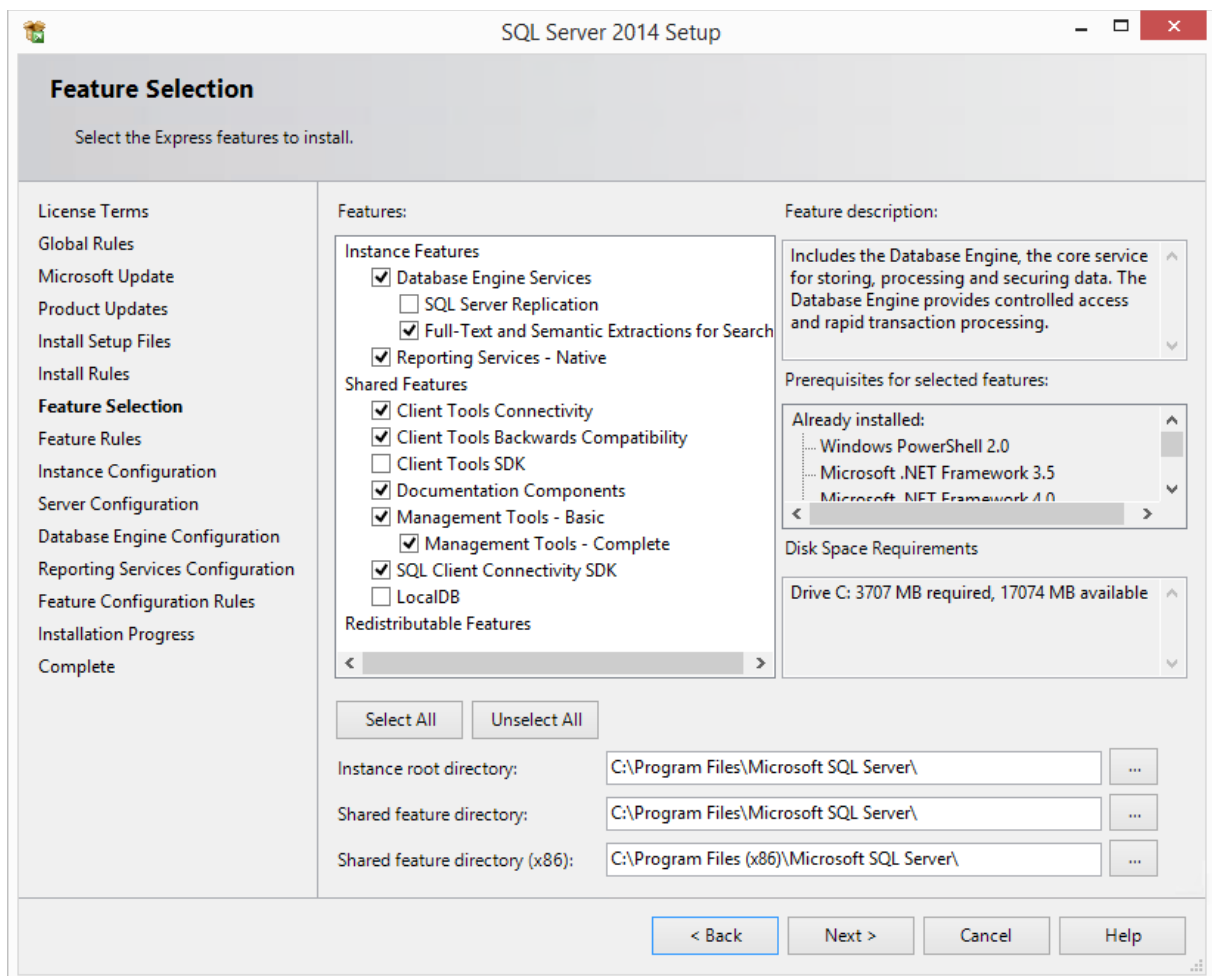
If there errors are to be displayed, please follow the instructions.



Now you find the function selection.

All the necessary functions for the EPLAN platform are marked below:

Continue the installation with **Next**.



## Installation Notes

Microsoft® SQL 2014 Express Basic  
Release: 05/2017



Now the name of the instance must be specified.

Our recommendation is *EPLAN*.

Continue the installation with **Next**.

SQL Server 2014 Setup

### Instance Configuration

Specify the name and instance ID for the instance of SQL Server. Instance ID becomes part of the installation path.

☐ Default instance

☒ Named instance:

Instance ID:

SQL Server directory: C:\Program Files\Microsoft SQL Server\MSSQL12.EPLAN

Reporting Services directory: C:\Program Files\Microsoft SQL Server\MSRS12.EPLAN

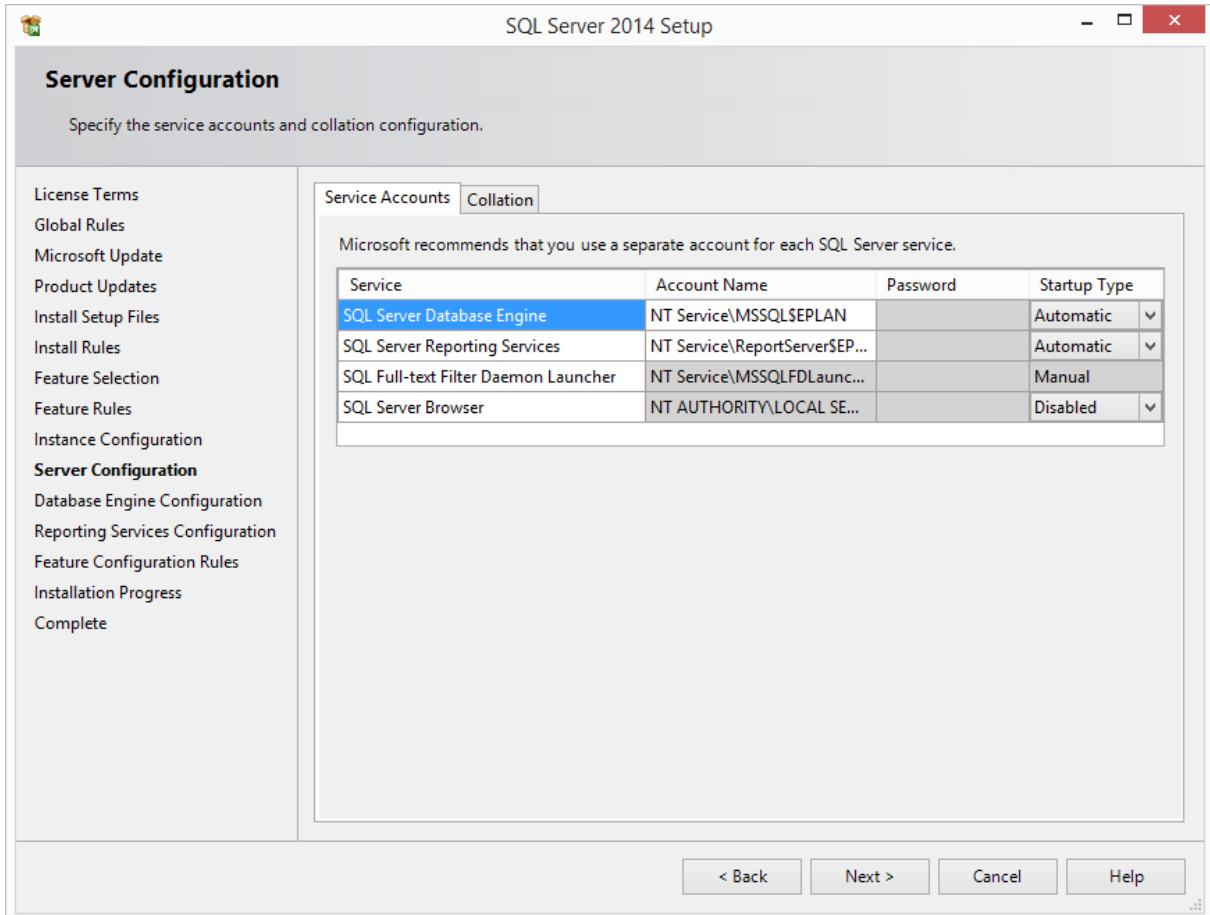
Installed instances:

Instance Name	Instance ID	Features	Edition	Version
---------------	-------------	----------	---------	---------

< Back   Next >   Cancel   Help

Please make the service accounts as follows:

Continue the installation with **Next**.



**SQL Server 2014 Setup**

**Server Configuration**

Specify the service accounts and collation configuration.

License Terms  
Global Rules  
Microsoft Update  
Product Updates  
Install Setup Files  
Install Rules  
Feature Selection  
Feature Rules  
Instance Configuration  
**Server Configuration**  
Database Engine Configuration  
Reporting Services Configuration  
Feature Configuration Rules  
Installation Progress  
Complete

Service Accounts Collation

Microsoft recommends that you use a separate account for each SQL Server service.

Service	Account Name	Password	Startup Type
SQL Server Database Engine	NT Service\MSSQLSEPLAN		Automatic
SQL Server Reporting Services	NT Service\ReportServer\$EP...		Automatic
SQL Full-text Filter Daemon Launcher	NT Service\MSSQLFDLaunc...		Manual
SQL Server Browser	NT AUTHORITY\LOCAL SE...		Disabled

< Back Next > Cancel Help

## Installation Notes

Microsoft® SQL 2014 Express Basic  
Release: 05/2017



For authentication method you choose **Mixed Mode**.

Assign the user **SA** password, and write it down.

Check if your current Windows user is listed in the window "**Specify Administrators SQL Server**".

If not add your current user by pressing "**Add Current User**".

Continue the installation with **Next**.

SQL Server 2014 Setup

### Database Engine Configuration

Specify Database Engine authentication security mode, administrators and data directories.

License Terms  
Global Rules  
Microsoft Update  
Product Updates  
Install Setup Files  
Install Rules  
Feature Selection  
Feature Rules  
Instance Configuration  
Server Configuration  
**Database Engine Configuration**  
Reporting Services Configuration  
Feature Configuration Rules  
Installation Progress  
Complete

Server Configuration | Data Directories | User Instances | FILESTREAM

Specify the authentication mode and administrators for the Database Engine.

Authentication Mode

☐ Windows authentication mode

☒ Mixed Mode (SQL Server authentication and Windows authentication)

Specify the password for the SQL Server system administrator (sa) account.

Enter password: .....

Confirm password: .....

Specify SQL Server administrators

WIN81\_WebEx\Fos (Fos)

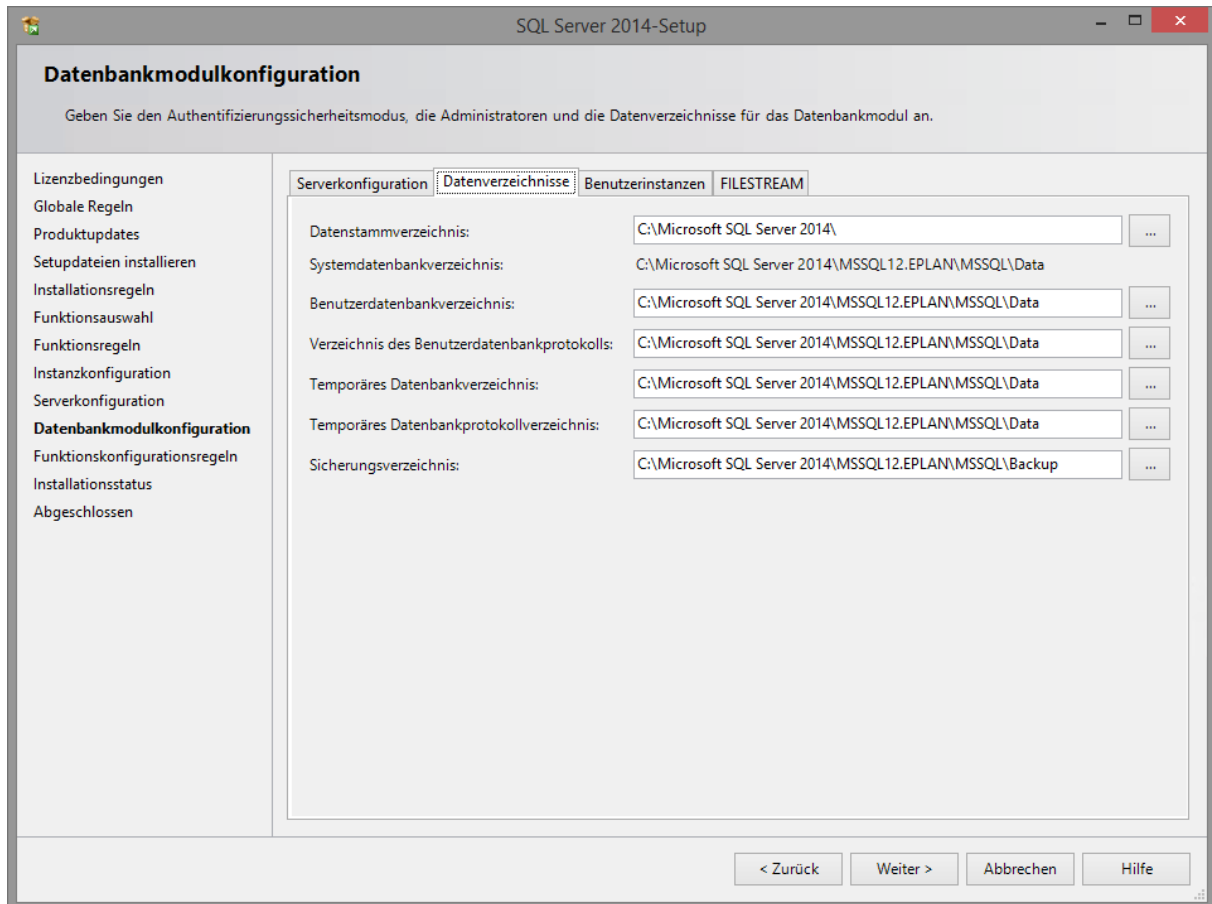
SQL Server administrators have unrestricted access to the Database Engine.

Add Current User Add... Remove

< Back Next > Cancel Help

Here you can see your chosen database engine configuration.

Continue the installation with **Next**.



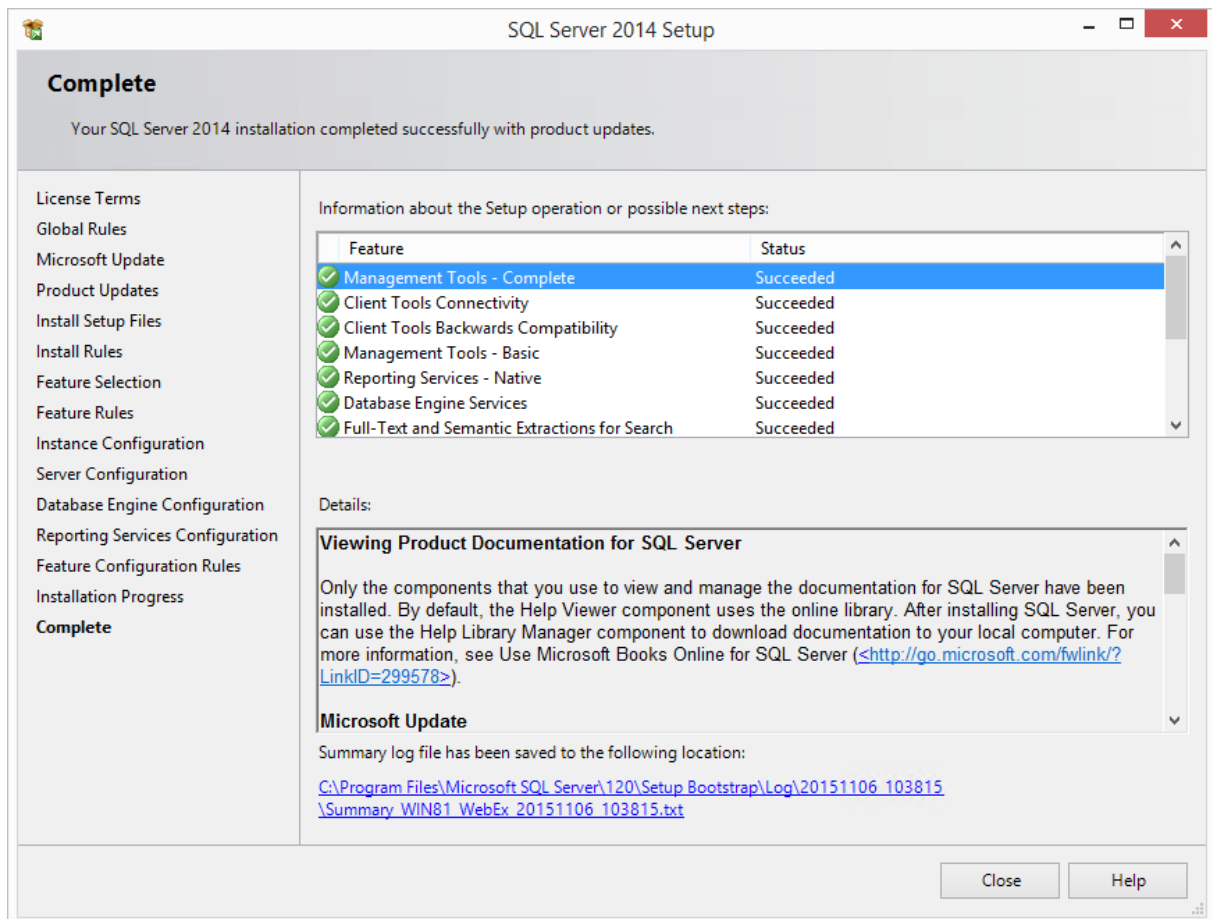
## Installation Notes

Microsoft® SQL 2014 Express Basic  
Release: 05/2017



Finally, you can see the status of the installation.

Finish the installation by clicking *Close*



Information for the acquisition of data for EPLAN Electric P8 can be found at <http://www.eplan.info/quickstart/en-us>