



# **UroChart EHR**

AmerisourceBergen

Installation of Parallels for  
UroChart EHR Clients  
Hosted

## Table of Contents

Determining the Operating System of the Computer (Windows) .....	3
Installation of Parallels on the Computer (Windows) .....	4
Installation of Parallels on the Computer (Macintosh).....	4
Configuration of the Primary Connection to Your UroChart Server (Macintosh & Windows).....	5
Configuration of the Disaster Recovery Connection to Your UroChart Server (Macintosh & Windows) .....	6

## Determining the Operating System of the Computer (Windows)

Before installing the Parallels client onto your computer, you must determine which operating system you have on your computer, 32-bit or 64-bit. This can be done by contacting your administrator or using the steps below to determine your operating system.

1. Use the key combination of Windows + Pause/Break.



2. In the System Information window that opens, under the System section you should see **System type:** and the operating system information.

System	
Rating:	4.9 <a href="#">Windows Experience Index</a>
Processor:	Intel(R) Core(TM) i5-3320M CPU @ 2.60GHz 2.60 GHz
Installed memory (RAM):	8.00 GB (7.70 GB usable)
System type:	64-bit Operating System
Pen and Touch:	No Pen or Touch Input is available for this Display

---

**Note:** This is just for Windows based operating systems and does not pertain to the installation of Parallels on a Macintosh computer. Installation on a Macintosh computer is discussed later in this document.

---

## Installation of Parallels on the Computer (Windows)

1. Open an internet browser and go to <https://iqweb2.intrinsiq.com>.
2. Use the link **Click Here to Download the Parallels Client** found at the bottom right of the screen.
3. Verify that the **OS** box at the top displays **Windows**.
4. Use the scrollbar at the right to find the appropriate installation option. You will be presented with four installation types. Select the appropriate installation option.
  - **Click Here to Download the Parallels Client (x86)** This version is for 32-bit operating systems. This will install the application for all users on this machine and requires administrator access to install.
  - **Click Here to Download the Parallels Client (Basic – x86)** This version is for 32-bit operating systems. This will run the application for the current user only and **not** install the application for later use.
  - **Click Here to Download the Parallels Client (x64)** This version is for 64-bit operating systems. This will install the application for all users on this machine and requires administrator access to install.
  - **Click Here to Download the Parallels Client (Basic – x64)** This version is for 64-bit operating systems. This will run the application for the current user only and **not** install the application for later use.
5. Run your downloaded file to install Parallels.

---

**Note:** You may be presented with an option to install the **Single Sign On** component. It is important that you do **not** install this component as it is not compatible with connecting to our system.

---

6. You have successfully installed Parallels and can now run the client.

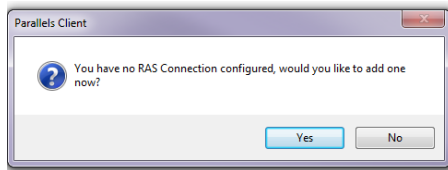
## Installation of Parallels on the Computer (Macintosh)

1. Open the Apple iTunes Store.
2. In the **Search** box, search for **Parallels**.
3. Click **Get** for the **Parallels Client** application.
4. Follow the prompts presented by your computer to finish the download.
5. You have successfully installed Parallels and can now run the client.

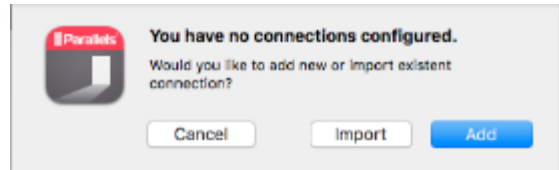
## Configuration of the Primary Connection to Your UroChart Server (Macintosh & Windows)

1. Launch the **Parallels Client**. The following message should appear based on the operating system of your computer.

### Windows



### Macintosh



2. Select **Yes** for Windows and **Add** for Macintosh.
3. You may be prompted to select the type of connection you wish to create. If you are, please select the **Parallels Remote Application Server** option.
4. On the following window, select **Advanced settings** to properly configure your connection.
5. Fill out the information for your connection Items within the <> signify a suggestion of what to put in this field.
  - Primary Connection: **iqclient2.intrinsiq.com**
  - Connection Mode: **Gateway SSL Mode**
  - Secondary Connections...: **<Do not enter anything for this option>**
  - Port: **443**
  - Friendly Name: **Primary - UroChartEHR**
  - Auto Logon: **<You may check this box if you wish Parallels to log you in automatically.>**
  - Authentication Type: **Credentials**
  - Username: **<This will be your Parallels account username and is different from your UroChart application username. (example: 12345\_jsmith)>**
  - Password: **<This will be your Parallels account password and is different from your UroChart application password.>**
  - Save Password: **<If you wish to save your password for your connection you may do so here.>**

---

**Note:** This presents an added security risk when the **Save Password** box is checked. This could allow any person who has access to your computer the ability to log in to the UroChart application and view Protected Health Information. It is the recommendation of IntrinsiQ Specialty Solutions to leave this box **unchecked** to increase the security of the application.

---

- Domain: **healthtronics**
6. Select **OK**
  7. You may now double-click the UroChart icon that appears to initiate the connection and launch the application.

## Configuration of the Disaster Recovery Connection to Your UroChart Server (Macintosh & Windows)

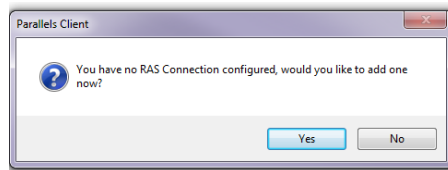
---

**Note:** IntrinsicQ Support will notify your practice when this connection should be used.

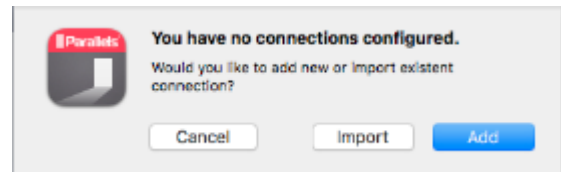
---

1. Launch the **Parallels Client**. The following message should appear based on the operating system of your computer.

### Windows



### Macintosh



2. Select **Yes** for Windows and **Add** for Macintosh.
3. You may be prompted to select the type of connection you wish to create. If you are, please select the **Parallels Remote Application Server** option.
4. On the following window, select **Advanced settings** to properly configure your connection.
5. Fill out the information for your connection Items within the <> signify a suggestion of what to put in this field.
  - Primary Connection: **iqclient1.intrinsicq.com**
  - Connection Mode: **Gateway SSL Mode**
  - Secondary Connections...: **<Do not enter anything for this option>**
  - Port: **443**
  - Friendly Name: **Disaster Recovery - UroChartEHR**
  - Auto Logon: **<You may check this box if you wish Parallels to log you in automatically.>**
  - Authentication Type: **Credentials**
  - Username: **<This will be your Parallels account username and is different from your UroChart application username. (example: 12345\_jsmith)>**
  - Password: **<This will be your Parallels account password and is different from your UroChart application password.>**
  - Save Password: **<If you wish to save your password for your connection you may do so here.>**

---

**Note:** This presents an added security risk when the **Save Password** box is checked. This could allow any person who has access to your computer the ability to log in to the UroChart application and view Protected Health Information. It is the recommendation of IntrinsicQ Specialty Solutions to leave this box **unchecked** to increase the security of the application.

---

- Domain: **healthtronics**
6. Select **OK**