

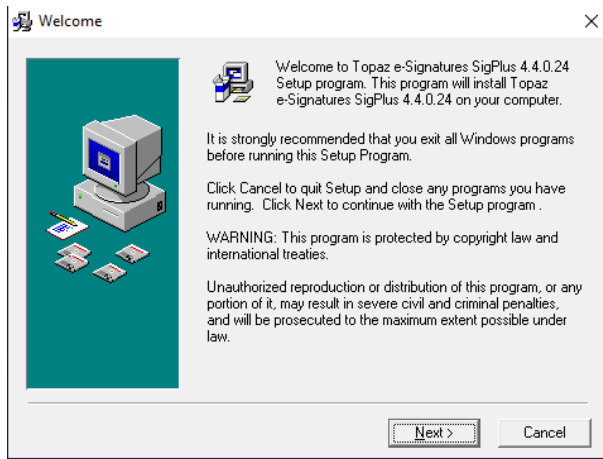
Signature Pad Setup

Topaz Signature Gem LCD

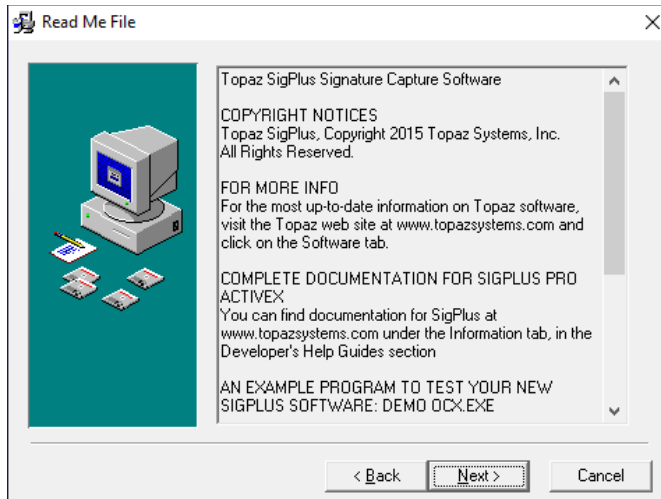
This document details the setup of the Model T-LBK755SE-BHSB-R Topaz Signature Gem LCD for AIM v12. The SigPlus software is required from <https://www.sigpluspro.com/>. Install the SigPlus software on the computer with the Signature Pad attached. All software downloads for the signature pad can be found on <https://www.topazsystems.com>.

Installing the SigPlus Software

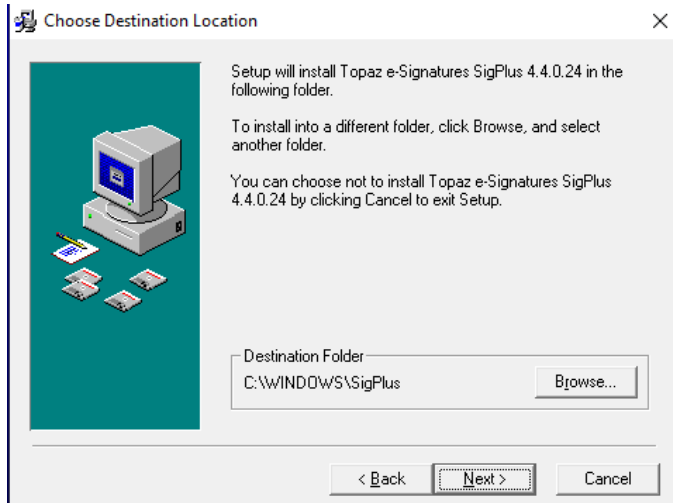
1. On sigpluspro.com website make sure to select the correct T-L Model Number. Then click the link to **Download SigPlus**.
2. Once the SigPlus software is downloaded it will startup the Installer. Click **Next** on the installer.



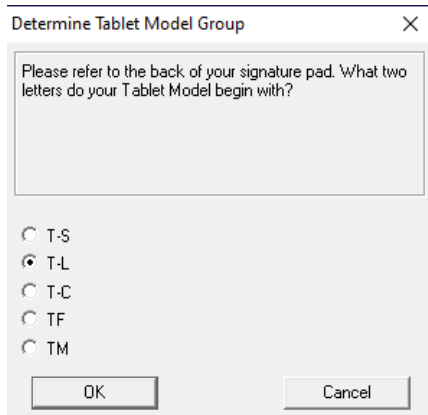
3. Click **Next**



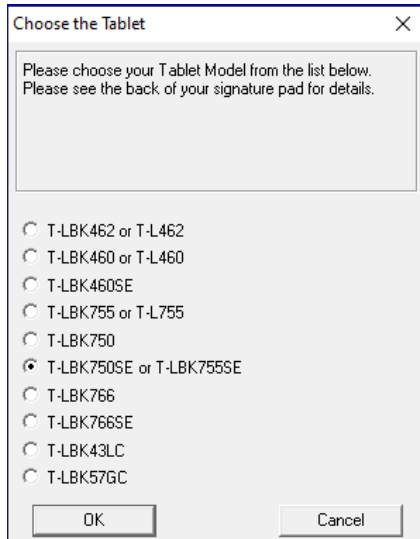
4. Click **Next**



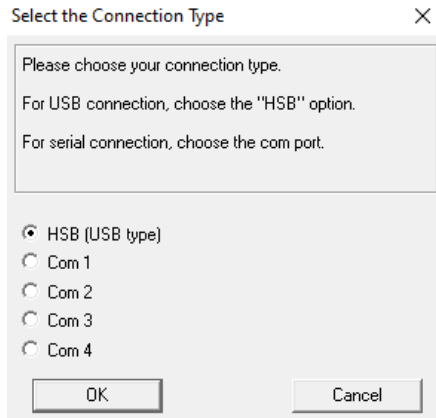
5. Select **T-L** and then click **OK**



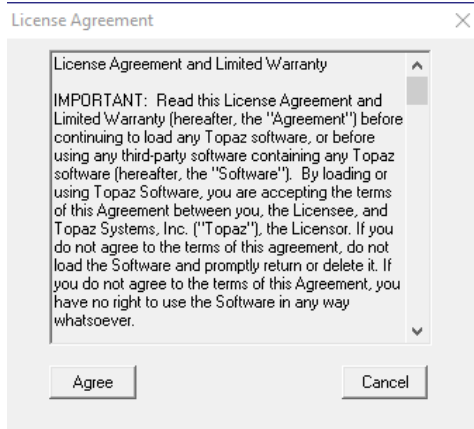
6. Select **T-LBK755E** and then click **OK**



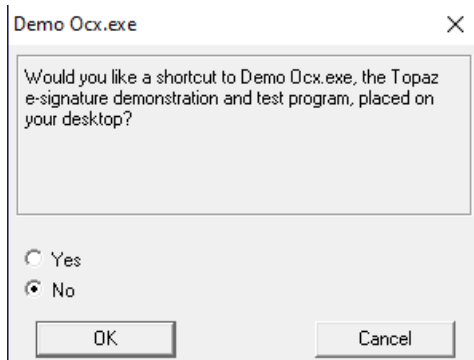
7. Select **HSB (USB Type)** and click **OK**



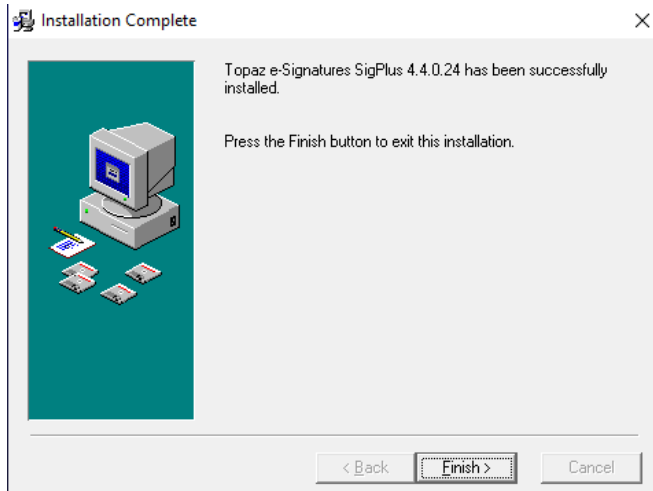
8. Click **Agree**



9. Select **No** and click **OK**

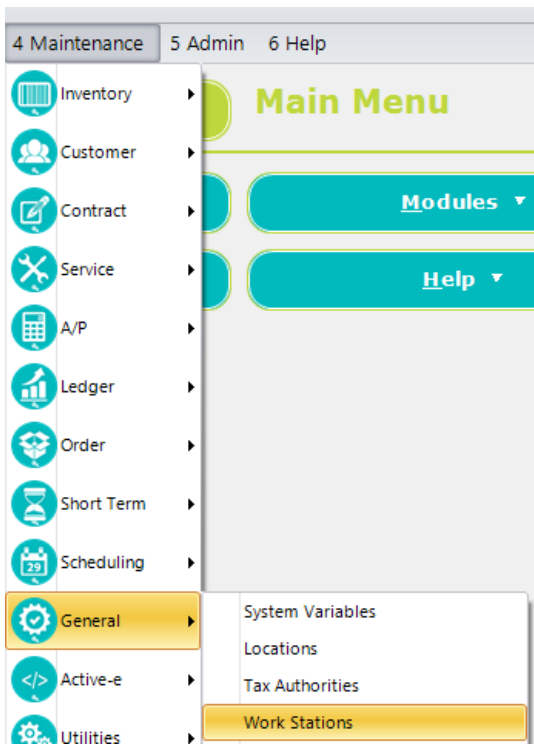


10. Click **Finish**

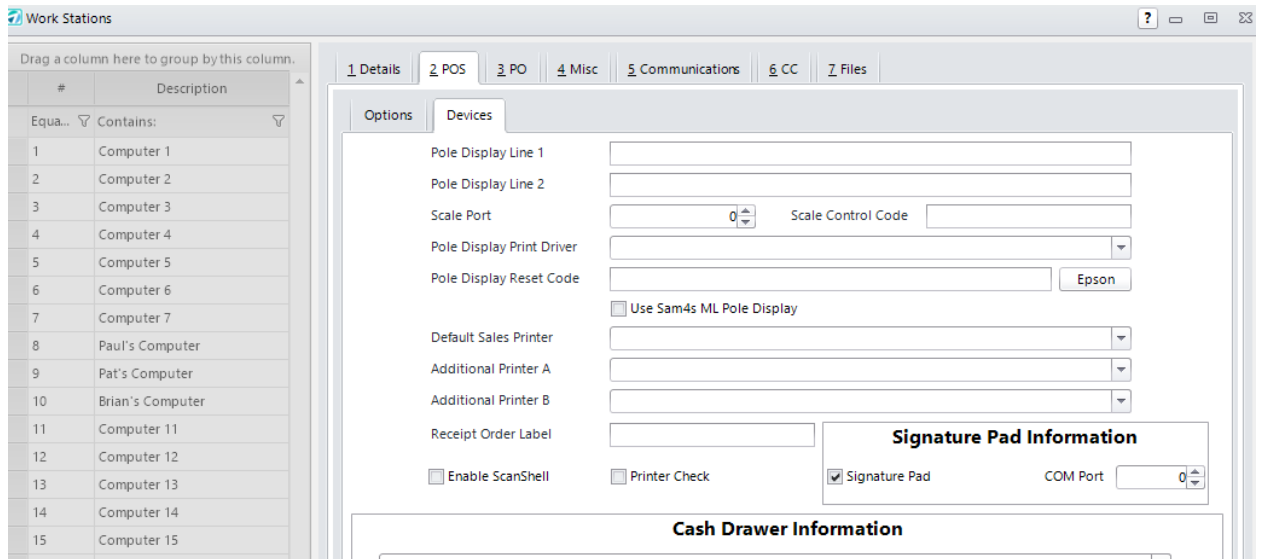


AIM Signature Activation

1. Access Work Stations under **Maintenance > General > Work Stations**



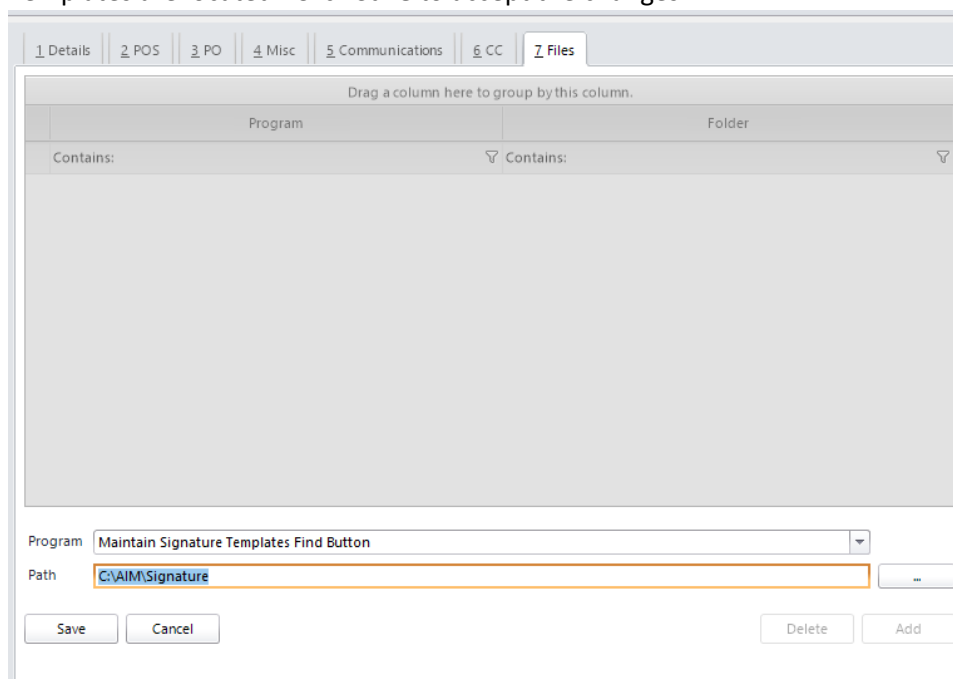
2. Click the **POS** tab and then click the **Devices** sub-tab. Select the **Signature Pad** check box.



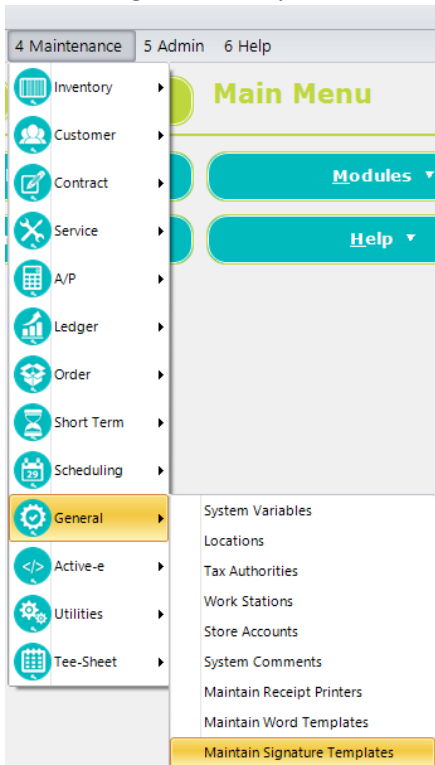
Creating Signature Templates

Signature templates are prompts for the customer that show on the signature pad. AIM supports the usage of signatures for approvals, proposals, delayed delivery, layaway, consignment entry, contracts (long term), reservations, short term rentals, and sales invoices.

1. Setup the document type where the prompt for signature will be triggered. Click the **Files** tab and then click the **Program** drop down to select **Maintain Signature Templates Find Button**. Click the ... button to select a location where the Signature Word Templates are located. Click **Save** to accept the changes.



2. Create a signature template under **Maintenance > General > Maintain Signature Templates**.



3. Click **Add** to create a new document prompt.

The screenshot shows the 'Maintain Signature Templates' dialog box. It has a 'Template Descriptions' section on the left with a 'Contains:' label and a search icon. The main area is titled 'Template Description' and contains the following fields:

- Approval
- Text Line 1
- Sign Here
- Text Line 2
- #
- Signature Panel Image
- dtPanel.bmp
- OK Image
- dtOk.bmp
- OK Clicked Image
- dtOkI.bmp
- Clear Image
- dtClr.bmp
- Clear Clicked Image
- dtClrl.bmp
- Auto Generated Code
- Approval Doc

Each field has a 'Find' button to its right. At the bottom of the dialog are buttons for Save, Cancel, Delete, Add, and Exit.

- **Text Line 1 and Text Line 2**
Enter text to display to the customer on the signature pad.
- **Signature Panel Image ***

Select the image that will display on the signature pad in the signature area.

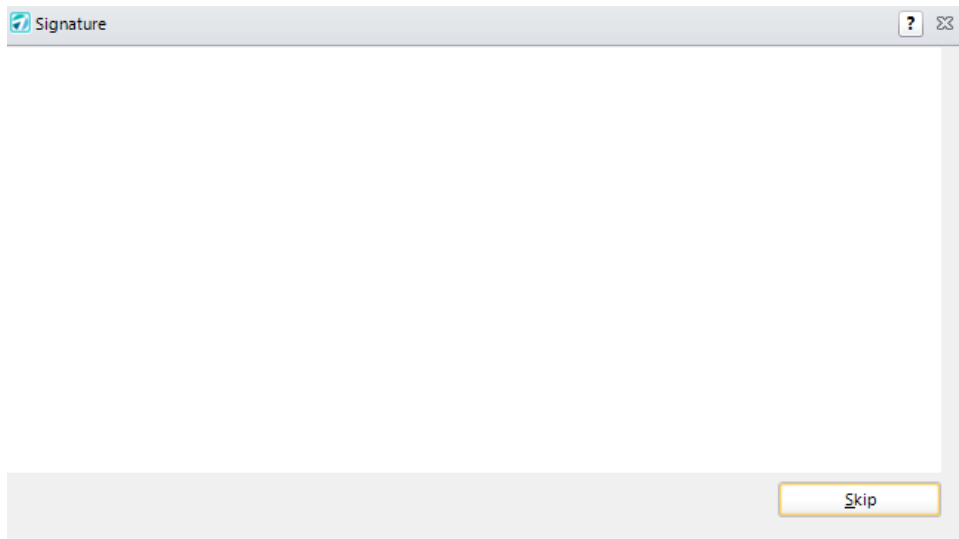
- **OK Image and Clear Image ***
Select the images that will display on the signature pad for the OK button and the Clear button.
- **OK Clicked Image and Clear Clicked Image ***
Select the images that will display on the signature pad for the OK button and the Clear button after the customer clicks them.
- **Auto Generated Code**
Select an option to indicate when the signature capture will be initiated.

4) Click Save.

*Tri-Tech has included default images in the AIM/templates folder. These images will be overwritten every update; if you modify the images, copy and rename them before setting up your templates.

Capturing the Signature

The signature window will come up after completing transactions when triggered.



The signature pad will light up and ask for the signature at this point. Once the customer clicks OK on the pad then the sale will continue with the tender payment screen and the signature will print on the receipt.

Template Information for proposals:

If you setup a signature template for proposals you can have the signature print on the word document template (mail merge) and on the proposal receipt. This is accomplished by inserting a picture into your proposal template and changing the contents of the alt text to <<ALL_SIGNATURE>>. If a signature was captured for a proposal, the signature image will replace the image in your template.


Remote Desktop Setup

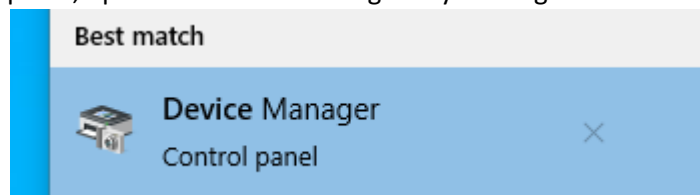
The Topaz HSB-to-COM driver allows a Topaz HSB signature pad (HID USB) to operate through a virtual COM port interface on a Windows PC. With the HSB-to-COM driver, pad users can also forward the virtual COM port (via the standard remote COM port forwarding techniques) in remote operating environments such as Remote Desktop (Terminal Server).

Local Client Setup

1. Download the HSB-to-COM driver:

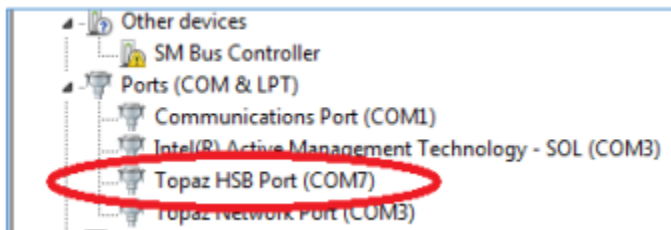
www.topazsystems.com/Software/download/hsbtocom.exe

2. Run the installer. Click **Next** though the Installation Wizard.
3. When installation is complete, click **Finished** to close the dialog.
4. On the local computer, open the “Device Manager” by clicking on **Start**  and then type



Device Manager.

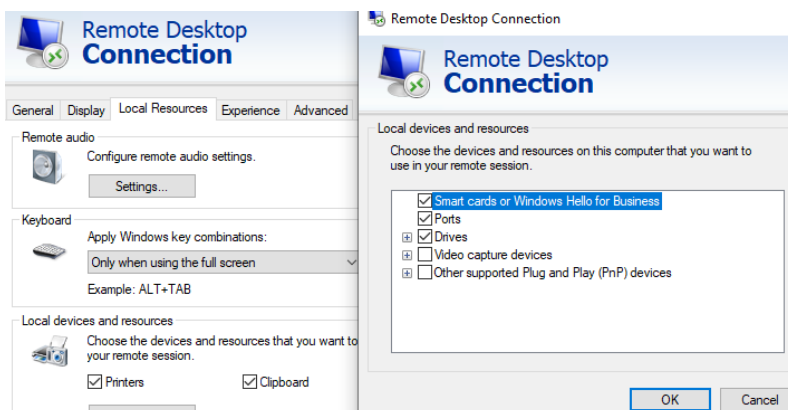
5. Under **Ports**, confirm that the Topaz HSB Port is listed.



Note: The Topaz HSB Port is only listed if the signature pad is connected to the computer.

Com Port Redirection

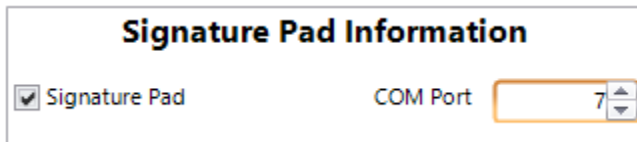
Enable **Ports** on the Remote Desktop Connection by clicking **More** on the **Local Resources** tab.



AIM Setup Over Remote Desktop

Setup for the signature pad in AIM over Remote Desktop is exactly the same as a local setup except for the **Signature Pad Information**.

1. The Signature Pad Information is found under **Maintenance > General > Work Stations > POS > Devices**. Enter the **COM Port** found in the Device Manager.



The image shows a dialog box titled "Signature Pad Information". Inside the dialog, there is a checked checkbox labeled "Signature Pad". To the right of this checkbox is the text "COM Port" followed by a numeric spinner control. The spinner control has the number "7" displayed in its center, with up and down arrow buttons on either side.

2. Click **Save**