

Installing Your Multifunction to Your Network for the First Time

PIXMA MX410

Windows OS

Installing Your Multifunction to Your Network for the First Time

PIXMA MX410
Windows OS

Preparing to Connect My Multifunction to My Network	3
Network Requirements	3
Important Information You Need Before Adding Your Multifunction	4
Installing the Drivers & Application Software	5
Downloading & Installing the Drivers	13
Download the Driver	13
Installing the Driver	
Downloading & Installing Application Software	22

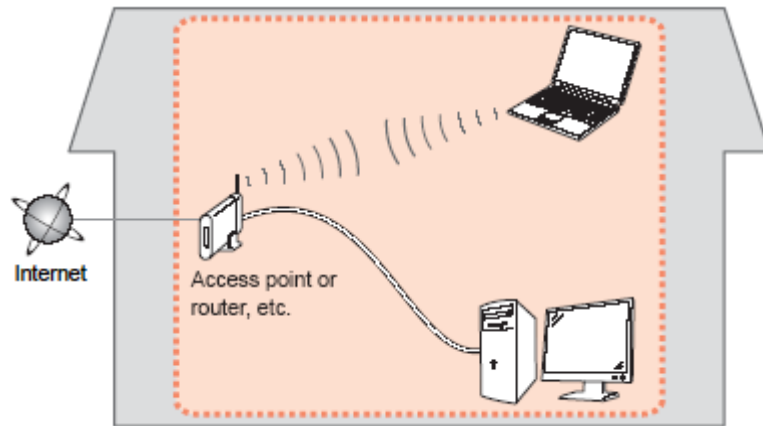
Preparing to Connect My Multifunction To My Network

[<< Previous](#)

[Next >>](#)

Network Requirements

Before connecting the machine to the network, make sure that configuration of the computer and access point or router is complete, and that the computer is connected to the network.



Notes on Network Connection

- The configuration, router functions, setup procedures and security settings of the network device vary depending on your system environment. For details, refer to your device's instruction manual or contact its manufacturer.
- The machine cannot be used over a wireless and wired connection at the same time.

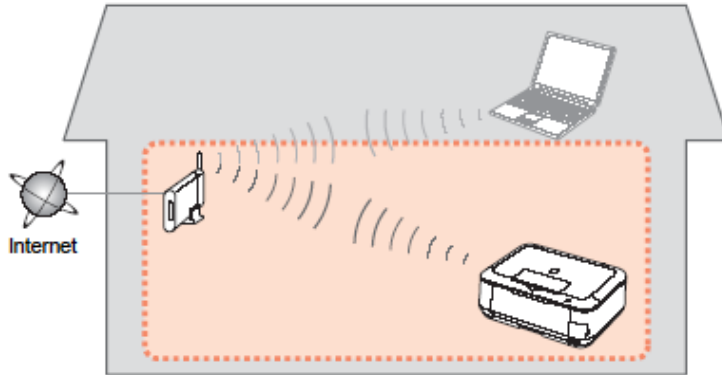
Wireless Connection

Connect to your network environment over a wireless connection.

Preparing to Connect My Multifunction To My Network

[<< Previous](#)

[Next >>](#)



An "Ad-hoc connection," which establishes a direct connection to the computer over a wireless connection without using an access point, is not supported.

Be sure to prepare an access point.

Important Information You Need Before Adding Your Multifunction

The following information is required to connect to your access point or router.

- **Access Point Name/Network Name:**

Also referred to as **SSID**. A name to identify the specific access point.

- **Network Key:**

Also referred to as encryption key, WEP key or WPA/WPA2 passphrase, Pre-Shared key.

A password required to set to prevent unauthorized access to communication.

Check your access point or router for the following information, and then write it down.

NOTE: For details on how to check the following information, refer to the manual of your access point or router, or contact its manufacturer.

Installing the Driver

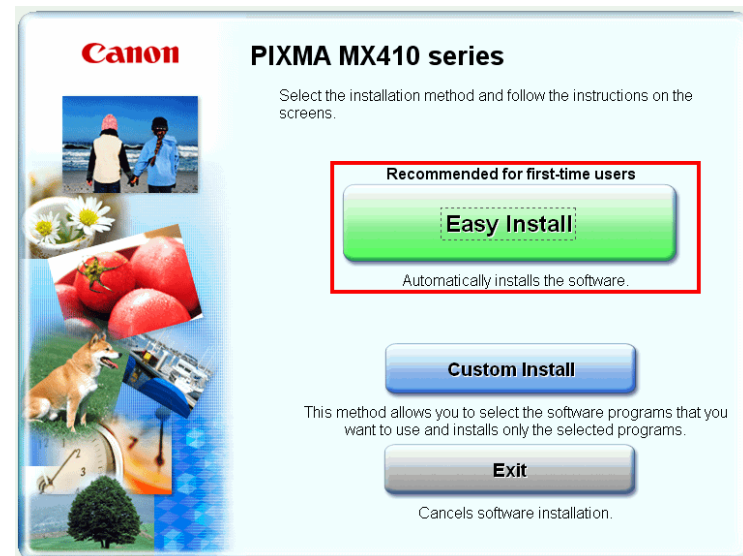
To use the machine by connecting it to a computer, software including the drivers needs to be copied (installed) to the computer's hard disk. The installation process takes about 20 minutes. (The installation time varies depending on the computer environment or the number of applications to be installed.) . We recommend using the **Setup CD-ROM** for installation. If you do not have the CD-ROM or want to use drivers downloaded from our web site , [Click here for instructions.](#)

Step One

Insert the Setup CD-ROM into your computer's CD-ROM drive

Step Two

On the opening screen select **Easy Install**



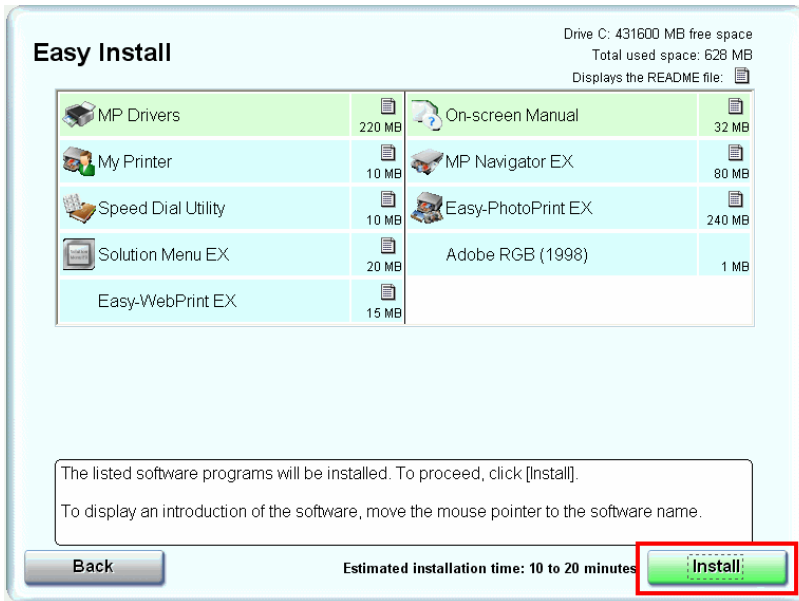
Installing the Drivers and Software

<<Previous

Next>>

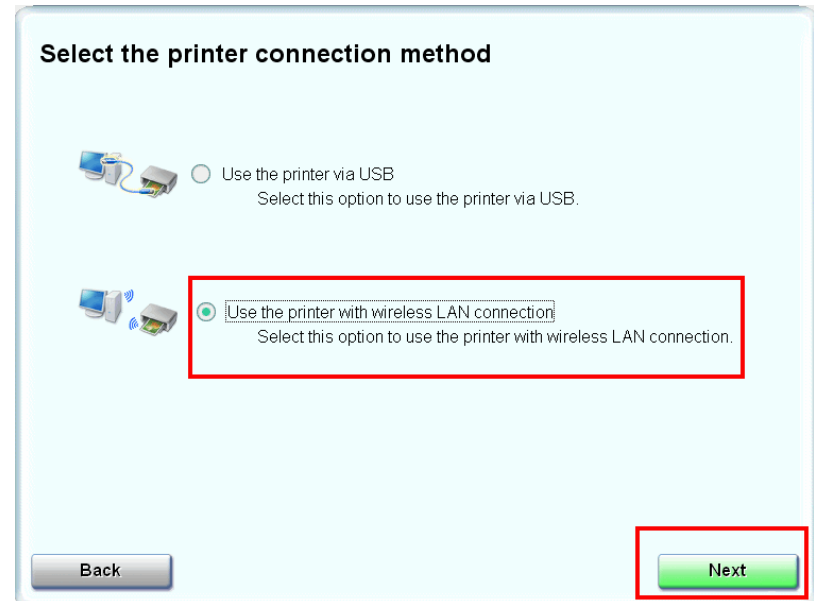
Step Three

On the next screen click **Install**



Step Four

Select **Use the printer with wireless LAN connection**, then click **Next**.



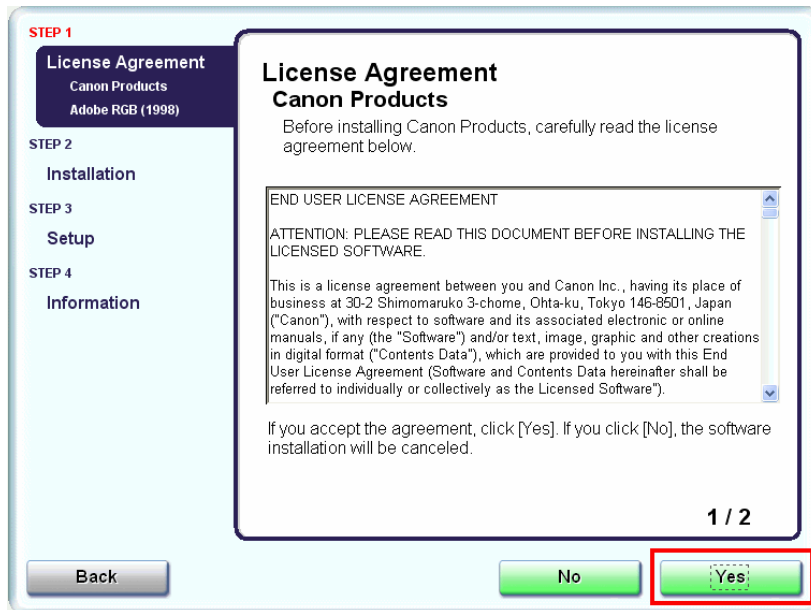
Installing the Drivers and Software

<<Previous

Next>>

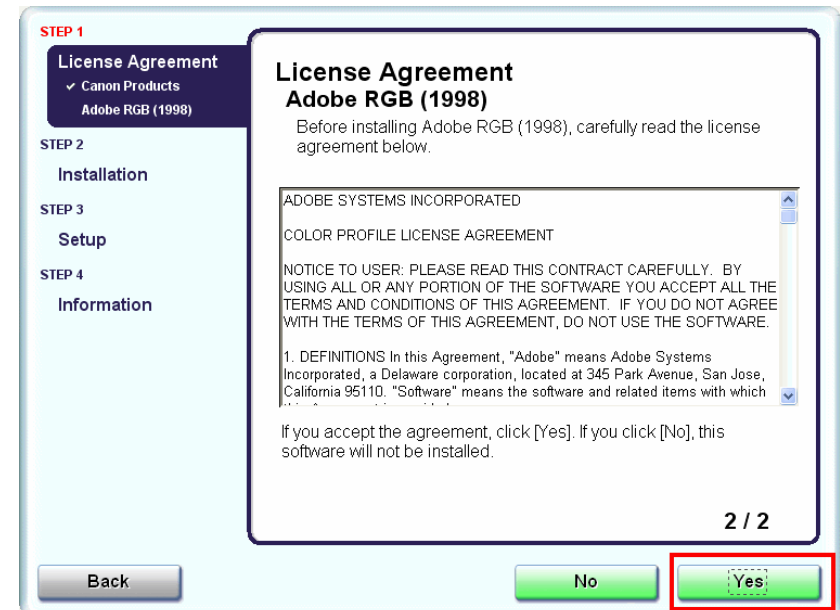
Step Five

Click **Yes** for the License Agreement



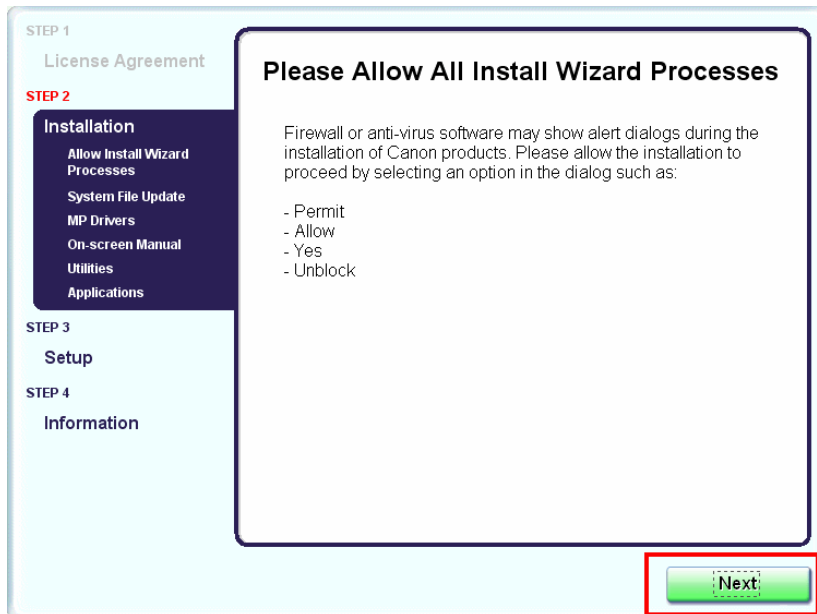
Step Six

Click **Yes** or **No** for the License Agreement Adobe RGB



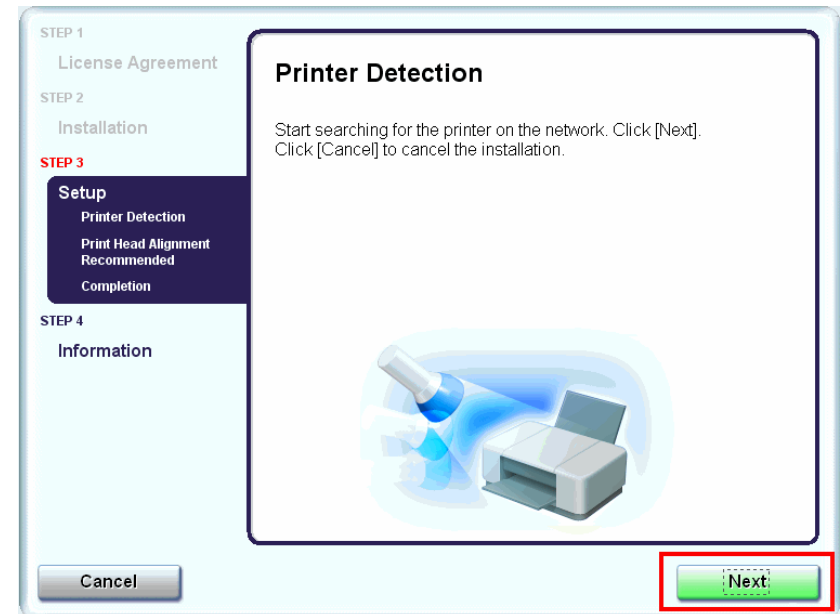
Step Seven

Click Next if the **Please Allow All Install Wizard Processes** appears



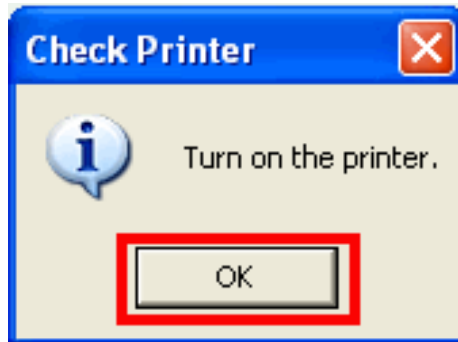
Step Eight

Click **Next** on the **Printer Detection** screen



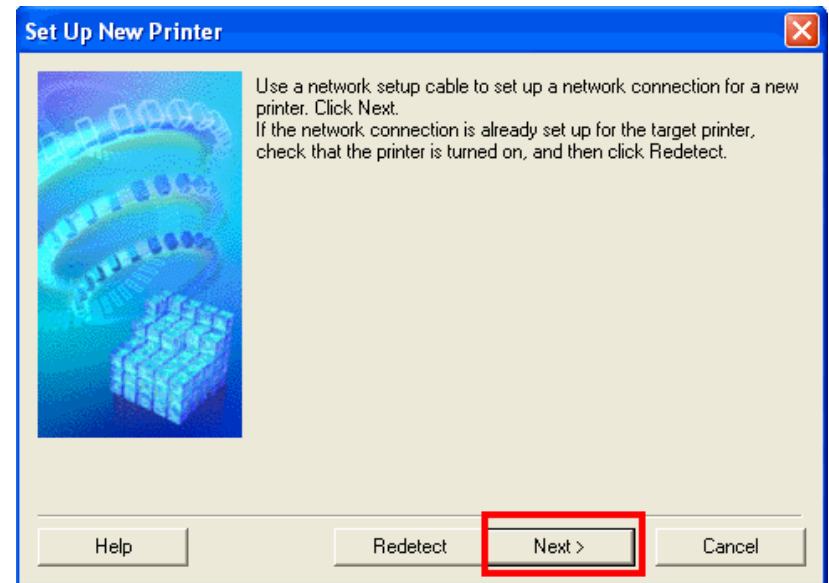
Step Nine

Turn on the printer and click **OK**



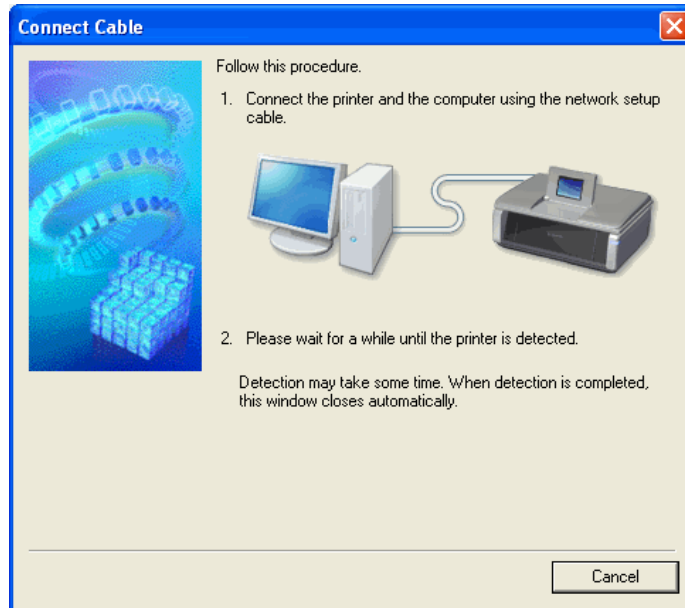
Step Ten

Click **Next** on the **Set Up New Printer** Window



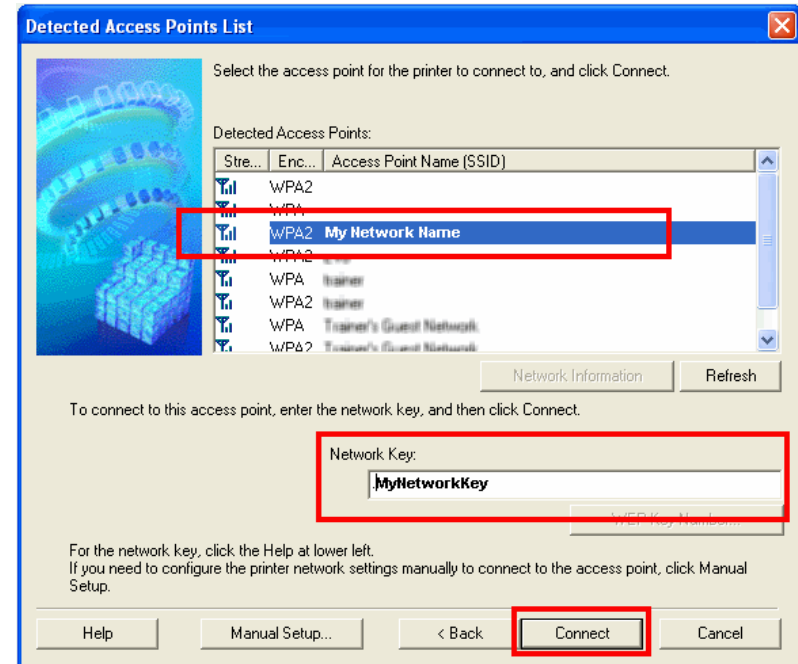
Step Eleven

Connect the printer and computer using the network setup cable.
The window closes automatically when detection is completed



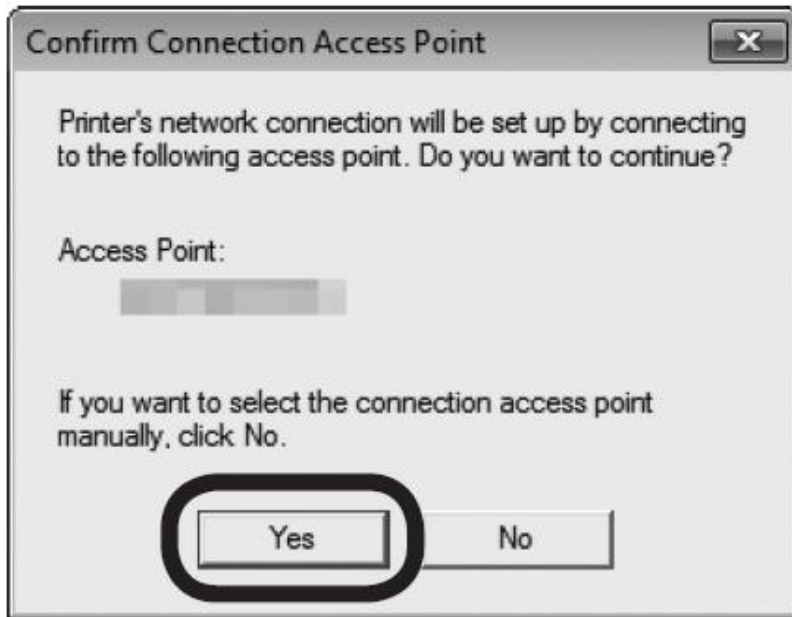
Step Twelve

If the **Detected Access Points List** appears, select the access point (SSID) You will be using, enter the network key and click **Connect**.



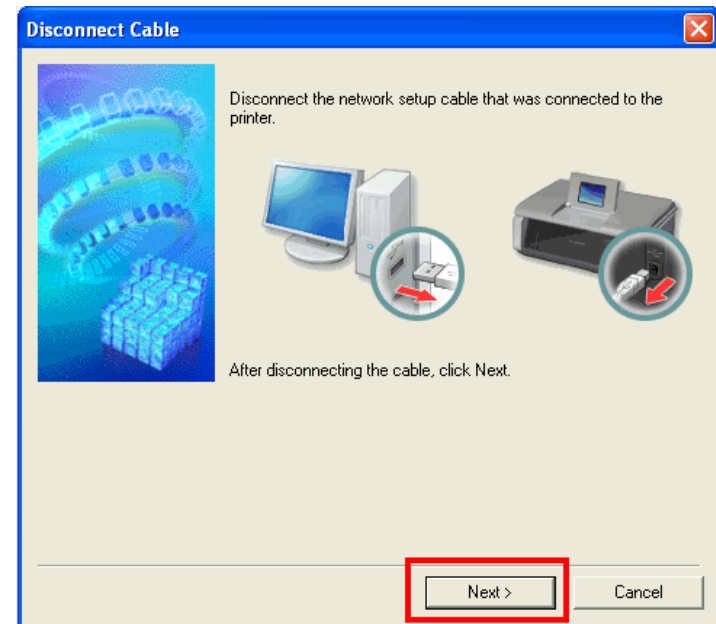
Step Twelve, continued

If the **Confirm Connection Access Point** screen appears, click **Yes**



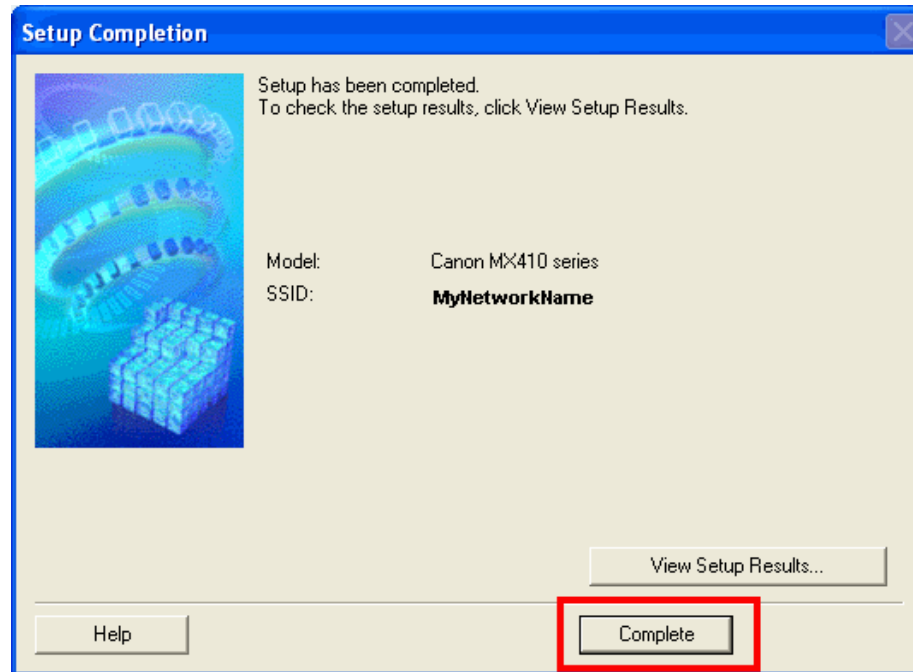
Step Thirteen

Disconnect the network setup cable then click **Next**



Step Fourteen

Click Complete or OK on the Setup Completion screen. Your device and software have now been set up. Please follow any remaining On-screen instructions to finish and exit.



Downloading the Driver

To use the machine by connecting it to a computer, software including the drivers needs to be copied (installed) to the computer's hard disk. The installation process takes about 20 minutes. (The installation time varies depending on the computer environment or the number of applications to be installed.)

Step One

[Go to the Drivers & Software for your model](#)

Step Two

Select your operating system in the **Select OS** dropdown menu.

Drivers & Software

Choose an operating system from the drop down menu then select the appropriate driver or software from the list below

Choose Operating System:

Select OS	Downloaded	File Size
Select OS		
Windows 7		
Windows 7 (x64)		
Windows Vista		
Windows Vista (x64)		

Firmware

No firmware updates are available for

Step Three

In the Drivers section, click the link* (the “.exe” file) for the **MP Driver**.

***Name varies by model**

Drivers	Date Posted
▶ mp68-win-mx410-1_00-ejs.exe MX410 series MP Driver Ver. 1.00 (Windows 7/7 x64/Vista/Vista64/XP/XP x64)	12/27/2010

* The file name turns red when the mouse pointer is on the file name.

Step Four

On the next screen, read the information and instructions and click **I Agree - Begin Download**
Once the file has been downloaded, double-click it to begin the installation process

IMPORTANT:

- Quit all running applications before installation.
- Log on as the administrator (or a member of the Administrators group).
- Do not switch users during the installation process.
- Internet connection may be required during the installation. Connection fees apply.
- It may be necessary to restart your computer during the installation process. Follow the on-screen instructions. The installation resumes once your computer has restarted.

If the firewall function of your security software is turned on, a warning message may appear that Canon software is attempting to access the network. If such a warning message appears, set the security software to always allow access.

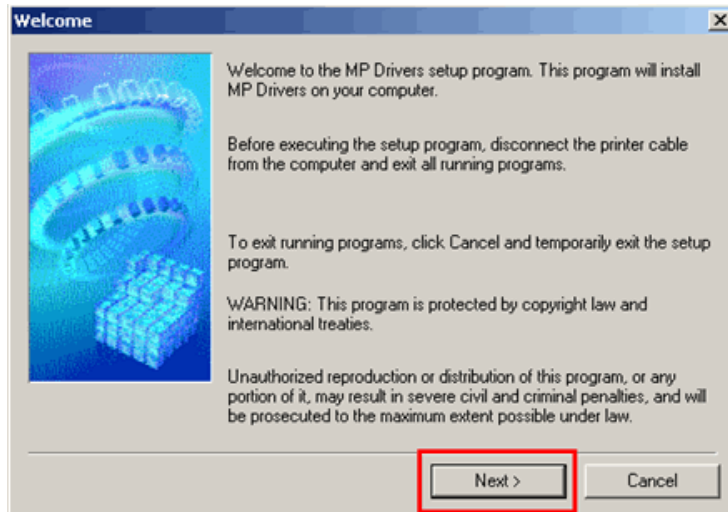
Installing the Driver

NOTE: If a **User Account Control** screen appears, click **Continue** or **Yes** (depending on Windows version) to continue.

NOTE: If the same screen reappears in subsequent steps, click **Continue** or **Yes**.

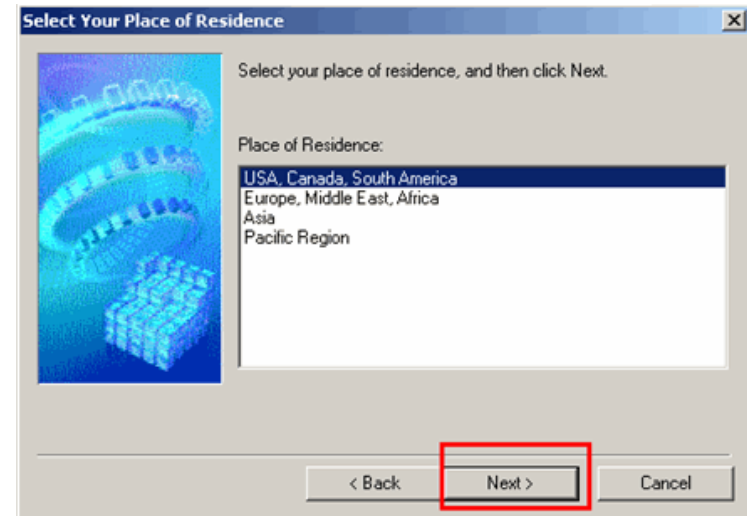
Step One

Click **Next** on the **Welcome** screen.



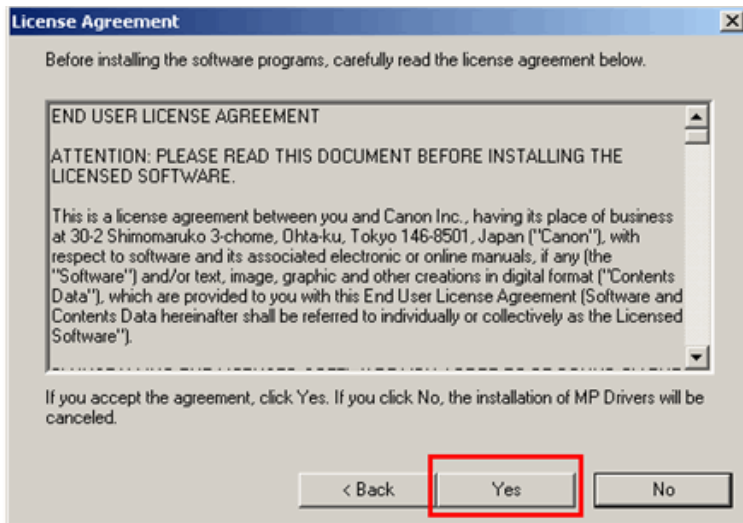
Step Two

Select your place of residence and click **Next**.



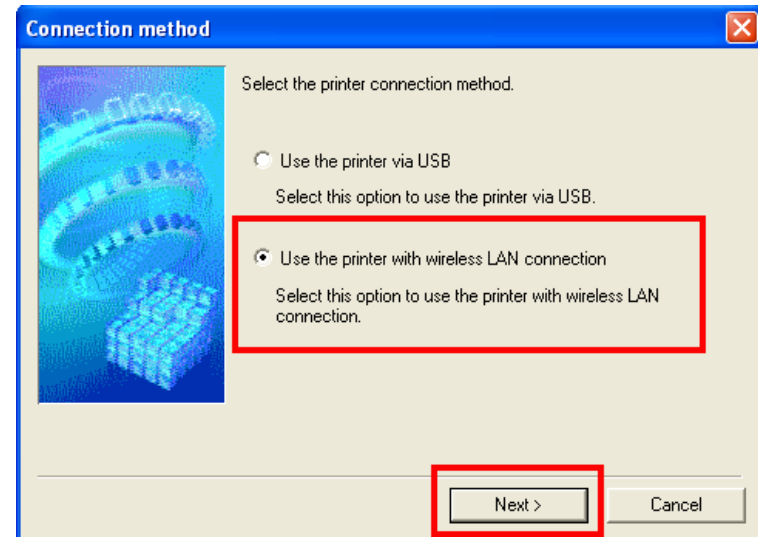
Step Three

Click **Yes** for the License Agreement.



Step Four

On the **Connection method** screen select **Use the printer with wireless LAN connection**, then click **Next**.

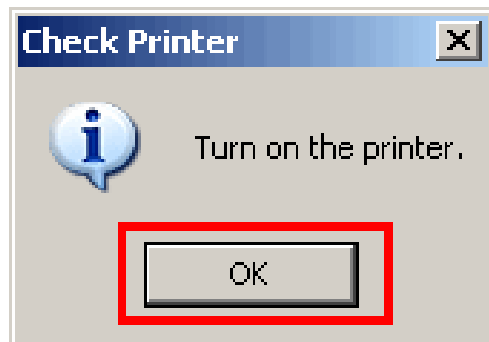


If the **Please Allow All Install Wizard Processes** screen appears, click **Next**.

Installation starts. Follow any on-screen instructions to install the software.

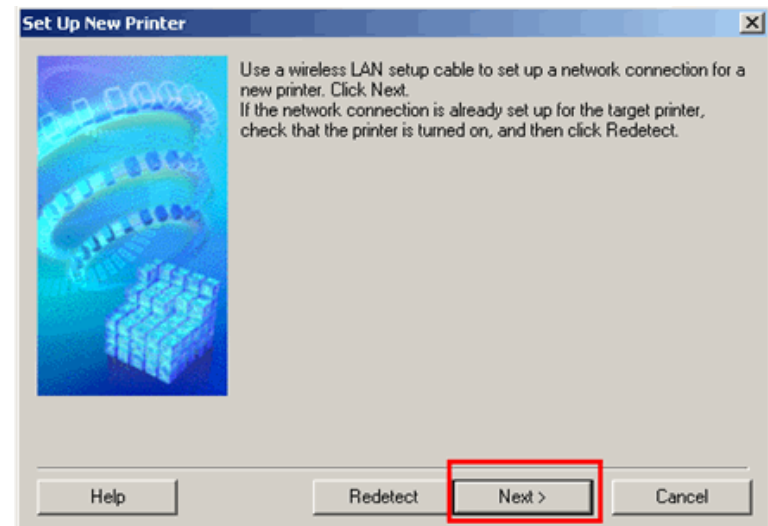
Step Five

Turn on the printer then click **OK**.



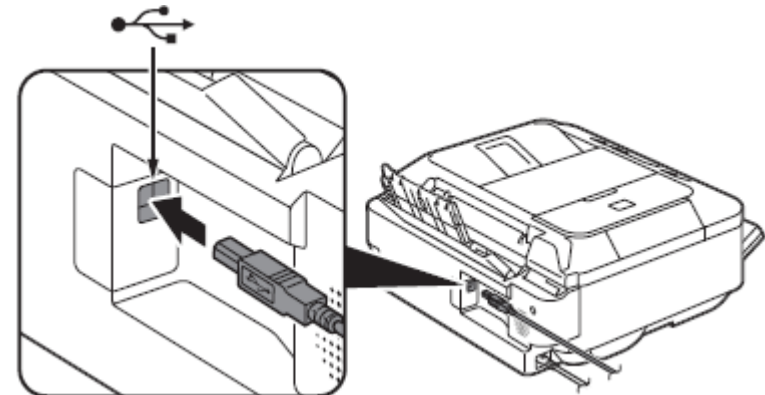
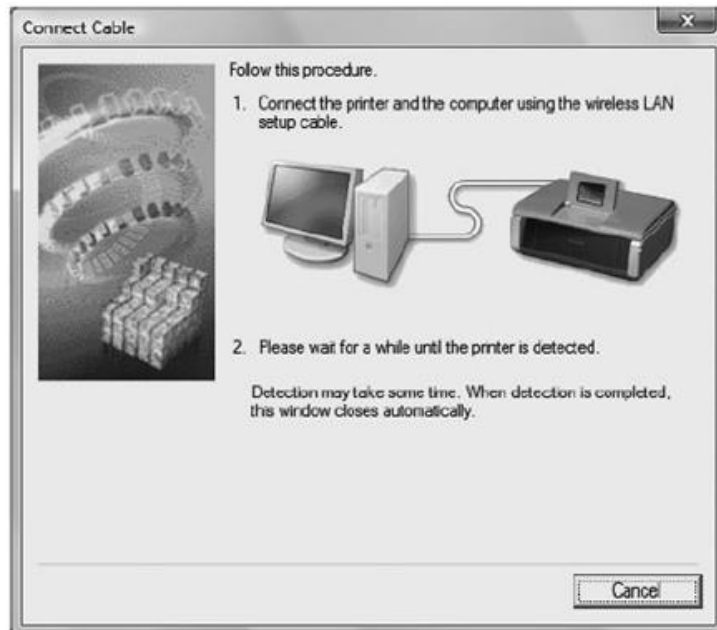
Step Six

Click **Next** on the **Set Up New Printer** window.



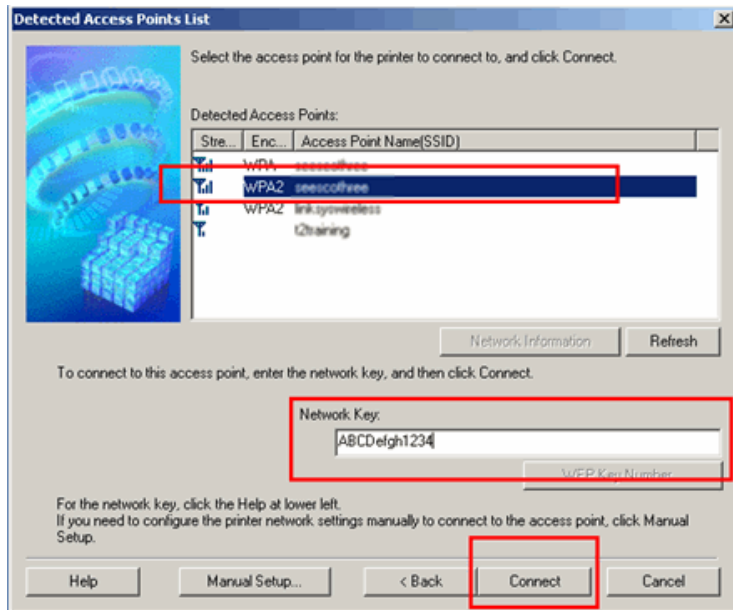
Step Seven

Connect the printer and computer using the network setup cable (USB cable). The USB port is located near the center on the back of the machine.



Step Eight

If the **Detected Access Points List** screen appears, select the target access point name/network name (SSID), enter the network key and click **Connect**.

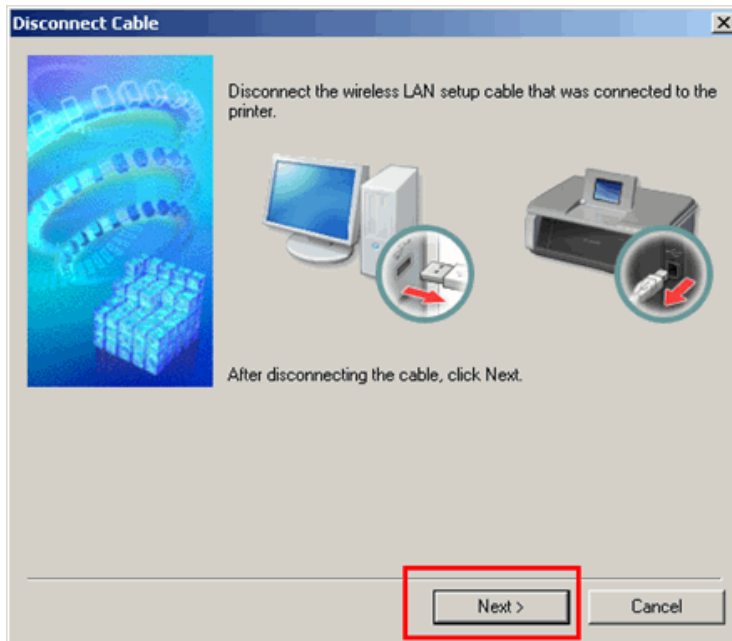


If the **Confirm Connection Access Point** screen appears, make sure that the target access point is displayed, then click **Yes**.



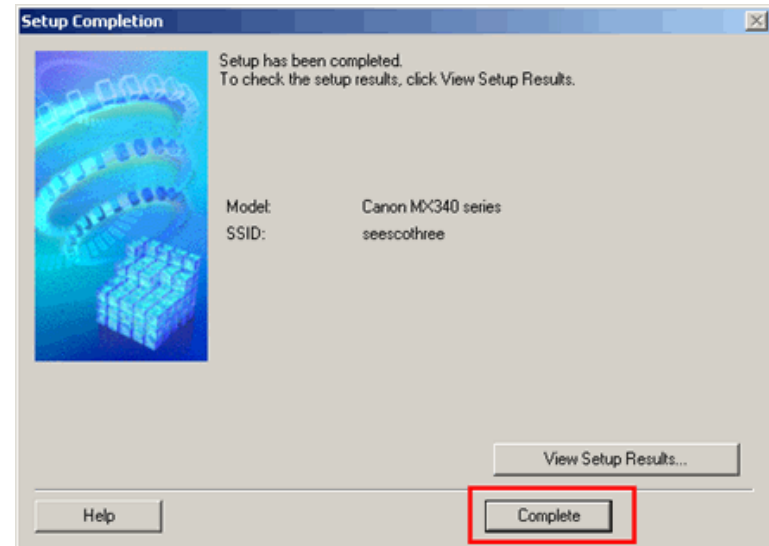
Step Nine

Remove the network setup cable (USB cable), then click **Next**.



Step Ten

Click **Complete** on the **Setup Completion** screen.



In order to take advantage of your machine's scanning capabilities, you must have scanning software installed on your computer. **MP Navigator EX** is a software application which makes it easy to import your scanned images into an application software directly, to print them, attach to an E-mail or to save them to your computer. The latest version of this software can be downloaded from our web site. The software can also be installed using the Setup CD-ROM. After inserting the CD, select **Custom Install** on the opening screen, then select **MP Navigator EX** and any other software you want to install, then click **Next**. Follow the instructions that appear on your computer screen.

Follow the instructions, below, if you want to obtain the software from our web site.

Step One

[Go to the Drivers & Software for your model](#)

Step Two

Select your operating system in the **Select OS** dropdown menu.

Drivers & Software

Choose an operating system from the drop down menu then select the appropriate driver or software from the list below

Choose Operating System:

Firmware

No firmware updates are available for

Select OS	File Size
Select OS	
Windows 7	
Windows 7 (x64)	
Windows Vista	
Windows Vista (x64)	

Step Three

Select the MP Navigator EX download file in the **Software** section

Software	Date Posted
▶ mpnx_4_1-win-mx410-4_1_0-ejs.exe MP Navigator EX Ver. 4.1.0 (Windows 7/7 x64/Vista/Vista64/XP/XP x64)	12/27/2010

Step Four

On the next screen, read the information and instructions and click **I Agree - Begin Download**

Once the file has been downloaded, double-click it to begin the installation process

IMPORTANT:

- Quit all running applications before installation.
- Log on as the administrator (or a member of the Administrators group).
- Do not switch users during the installation process.
- Internet connection may be required during the installation. Connection fees apply.
- It may be necessary to restart your computer during the installation process. Follow the on-screen instructions. The installation resumes once your computer has restarted.

If the firewall function of your security software is turned on, a warning message may appear that Canon software is attempting to access the network. If such a warning message appears, set the security software to always allow access.

Step Five

Follow any instructions that appear on the screen