

Cuisinart® INSTRUCTION BOOKLET



Cuisinart® CleanWater™
Countertop Filtration System

WCH-950

For your safety and continued enjoyment of this product, always read the instruction book carefully before using.

IMPORTANT SAFEGUARDS

When using an electrical appliance, basic precautions should always be followed to reduce the risk of fire, electric shock, and personal injury, including the following:

1. Use this appliance only as described in this manual. Other uses not recommended may cause fire, electric shock or personal injury.
2. This product is intended for household use only.
3. To protect against electric shock, do not immerse unit, plug or cord in water or spray with liquids.
4. Close supervision is necessary when any appliance is used by or near children.
5. Unplug from the outlet when not in use or when moving from one location to another, and before cleaning.
6. To disconnect the appliance, grip the plug and pull it from the wall outlet. Never pull by the cord.
7. Do not operate the appliance in the presence of explosive and/or flammable fumes.
8. Do not place the appliance or any of its parts near an open flame, cooking or other heating appliance.
9. Do not operate the appliance with a damaged cord or plug, if the product malfunctions, or if it is dropped or damaged in any manner.
10. The use of attachments not recommended by the manufacturer may be hazardous.
11. Place the unit on a dry level surface.
12. Do not operate if the housing is removed or damaged.
13. A loose fit between the AC outlet (receptacle) and plug may cause overheating and a distortion of the plug. Contact a qualified electrician to replace loose or worn outlet.
14. This appliance is designed to be freestanding only, and should not be recessed or built in (fully recessed).
15. Locate the unit away from direct sunlight and sources of heat (stove, heater, radiator, etc.). Direct sunlight will affect/alter the outside color of the appliance.
16. Do not use with water that is microbiologically unsafe or of unknown

quality without adequate disinfection before or after the system. Individuals requiring water of specific microbiological purity should consult their physician.

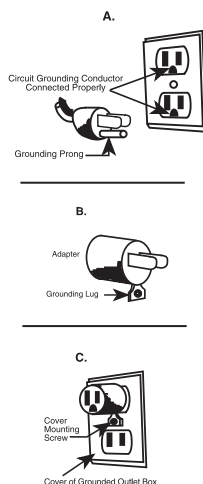
NOTE: The system and installation of this product needs to comply with state and local laws and regulations.

WARNING: To reduce the risk of fire, electric shock or personal injury, unplug or disconnect the appliance from the power supply before servicing.

SAVE THESE INSTRUCTIONS FOR HOUSEHOLD USE ONLY

SPECIAL CORD SET INSTRUCTIONS

For your protection, this unit is equipped with a 3-conductor cordset that has a molded 3-prong grounding-type plug, and should be used in combination with a properly connected grounding-type outlet as shown in figure A. If a grounding-type outlet is not available, an adapter, shown in Figure B, may be obtained so that a 2-slot wall outlet can be used with a 3-prong plug. As shown in Figure C, the adapter must be grounded by attaching its grounding lug under the screw of the outlet cover plate.



NOTE: Do not remove the grounding prong.

CAUTION: Before using an adapter, it must be determined that the outlet cover plate screw is properly grounded. If in doubt, consult a licensed electrician. Never use an adapter unless you are sure it is properly grounded.

NOTE: Use of an adapter is not permitted in Canada.

CONTENTS

Important Safeguards.....	2
Special Cord Set Instructions	2
Introduction	3
Parts and Features.....	3
Setting Up	4
Before First Use	4
Operating Instructions	4
Tips and Hints	5
Cleaning and Care	5
Troubleshooting	6
Storing the Unit	7
Technical Specifications	7
Performance Data Sheet	8
California Certification	9
Warranty	10

INTRODUCTION

Pour yourself a glass of fresh, clean, filtered water for a refreshing drink without opening the refrigerator or a bottle.

Your CleanWater™ Countertop Filtration System is Cuisinart at its most convenient. Drink healthy!

PARTS AND FEATURES

1. 12-Week Filter Timer

Lets you know when to change your water filter.

2. Cover

Filp-top lid for easy filling.

3. Unfiltered/Upper Water Tank

(Approx. ½ gallon capacity)

4. Filtered/Lower Water Tank

(Approx. 1 gallon capacity)

5. On/Off Power Button

Press to power on. This will activate the chilling and heating functions.

6. Hot Water Button with Child Lock

Move safety lock up, then press to dispense hot water.

7. Room/Ambient Water Button

Press to dispense room temperature water.

8. Cold Water Button

Press to dispense chilled water.

9. Temperature Indicator Lights

Red/blue LEDs light up when water has reached hot/cold temperatures.

10. Spigots

11. Brushed Stainless Steel Base

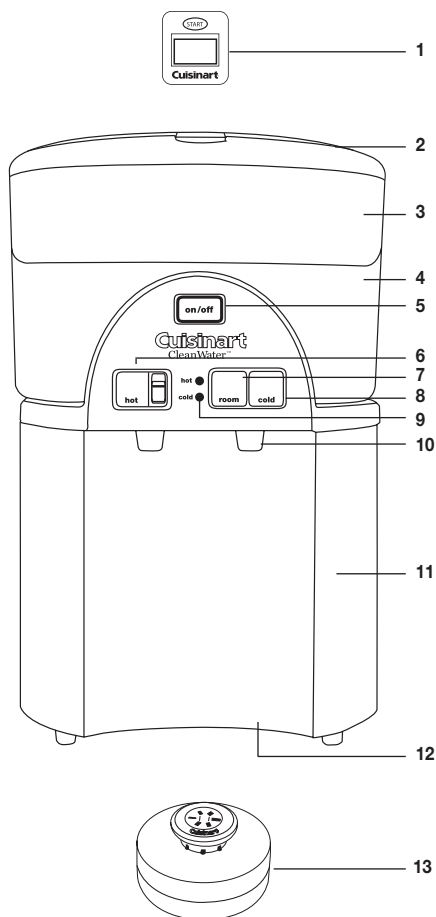
Durable stainless steel construction complements any décor. (Approx. ½ gallon total capacity in hot and cold tanks combined).

12. Drainage Plugs (not shown)

Two removable plastic plugs are located on bottom of unit.

13. Replacement Water Filter (Model GF-80)

The Cuisinart water filter has an optimum filter life of 3 to 4 months or 80 gallons.



BEFORE FIRST USE

SETTING UP

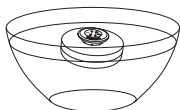
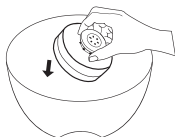
1. Remove your Cuisinart® CleanWater™ Countertop Filtration System carefully from the box. You may wish to store the packaging for future use.
2. Position the unit on a stable flat surface, close to a main power outlet, not in direct sunlight, and out of the reach of children.
3. Make sure that there is sufficient space around the water dispenser to allow the heat extracted during the chilling process to dissipate. Allow at least 3" of space around the sides and rear of the unit for air circulation.
4. Remove filter from upper tank and follow the below filter preparation instructions.

OPERATING INSTRUCTIONS

NOTE: Do NOT plug the unit in or install the filter yet.

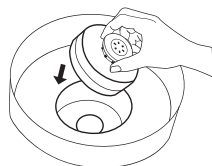
Installing the Water Filter

1. Remove the water filter from its packaging (it is normal for the filter to appear moist during storage). **DO NOT WASH FILTER ELEMENT WITH SOAP AND WATER.**
2. Place water filter in **empty** bowl in upright position with Cuisinart logo facing up. Then slowly fill bowl with water. Do not pour water directly on the filter.
3. Add enough cold water to ensure that filter is fully submerged when pushed down. Hold filter upright, under water, and agitate it for 1 or 2 minutes or until bubbles stop rising to surface. Continue to soak filter for at least 15 minutes.
NOTE: Filter may not sink to the bottom.
4. While the filter is soaking, remove the unfiltered/upper water tank and filtered/lower water tank. **NOTE:** Carefully remove filter timer before washing cover by flipping the cover and pressing on plastic tab to loosen timer. Filter timer is not immersible. Wash both tanks and plastic lid in mild, soapy water, and rinse.
5. When filter is thoroughly soaked, lift it from bowl and allow water to drain.

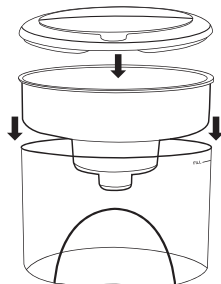


NOTE: The filter contains a small amount of loose carbon dust, which may make water appear dark during soaking – once the preparation process is complete, dust will be rinsed out of filter.

6. Insert the water filter (in upright position with Cuisinart logo facing up) into the upper water tank and push firmly into place.
7. Hold the upper water tank with the filter in it under cold running tap water for 15 seconds to flush out the carbon dust.
8. Place upper water tank on a pitcher or bowl to drain water from upper tank. May take approximately 5 minutes.
9. Fit the unfiltered/upper water tank onto the filtered/lower water tank and place cover on top. **NOTE:** The indent on the upper water tank must face the back of unit when in place.
10. Place the reassembled tanks on the base.



Setting Up Your Cuisinart® CleanWater™ Countertop Filtration System



1. Lift the flip top lid, and using a clean pitcher, pour cold tap water into the unfiltered/upper water tank to **FILL** line shown below. Continue pouring water into upper tank until bottom tank is full.



NOTE: Only cold tap water is to be poured into the unit.

2. During initial setup allow approximately 30-40 minutes for water to filter into the filtered/lower water tank. **NOTE:** Filtered/lower tank must be full before proceeding to step #3. If it takes longer than 30-40 minutes to fill filtered/lower tank, read troubleshooting section on page 6.
3. To **purge** air from tanks, first place a glass under right spigot and press and hold **COLD** button until erratic water flow becomes steady (about 1-3 minutes). Repeat with **ROOM** button. Then place the glass under left spigot and repeat with **HOT** button.
4. Close the lid.
5. Plug the unit into an electrical outlet. Press the On/Off power switch on the control panel to turn on. The blue light around the power switch indicates the unit is on and the cold and hot features are activated.
6. After about 15 minutes the red hot water indicator will light up. After approximately 1 hour 20 minutes, the blue cold water indicator will light up signaling the water has chilled. Press each button (**HOT**, **ROOM** and **COLD**) to ensure all air has been purged from the unit. Your Cuisinart® CleanWater™ Countertop Filtration System is now ready for use.

NOTE: On subsequent fill-ups, unit may take up to 30 minutes to chill and 10 minutes to heat. Condensation may appear on top cover.

Using the Filter Timer

It is important to change your water filter regularly to enjoy the full benefits of good tasting filtered water. The filter timer automatically reminds you when your water filter needs to be changed. It has a life of 3 to 4 months, or 80 gallons.

Once the filter is in place and unit is assembled, start the filter timer as follows:

1. On the cover there is a filter timer that lets you know when to replace the filter.
2. Peel off "Filtering" sticker from filter timer screen.
3. Press and hold the Start button until the word "Filtering" is displayed (approximately 3 seconds).
4. In 12 weeks, the word "REPLACE" will appear. We recommend replacing the filter with a new Cuisinart® Water Filter within the following 2 weeks, depending on usage.

NOTE: Only the Cuisinart® Water Filter (GF-80) (see page 7) can be used with this unit.

5. Once you replace the filter, reset the timer by pressing the Start button. **NOTE:** If you do not replace the filter and press and hold Start button for 3 seconds, the timer will automatically shut off to save power and no display will be shown. You can press and hold the Start button for 3 seconds at any time to reset the timer if needed. If you press the Start button for more than 5 seconds the timer will automatically shut off to save power.

REPLACING WATER FILTER

Follow "Installing the Water Filter" under Operating Instructions on page 4.

TIPS AND HINTS

- Drinking 4 to 8 glasses of water each day is healthy! Your countertop chiller makes it easy.
- Regular use of clean, filtered water in your automatic coffeemaker means less frequent decalcification treatments.
- Use filtered water in your iron to reduce mineral build-up.
- Treat your pets to clean, filtered water.
- Clean, filtered water makes tea and instant soup or coffee taste better.

CLEANING AND CARE

CAUTION: To prevent personal injury or electric shock, always unplug your Cuisinart® CleanWater™ Countertop Filtration System from outlet before cleaning. Do not immerse base in water or other liquid.

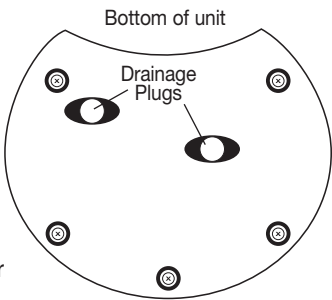
1. Turn the unit off and unplug it from outlet.
2. Remove the filter and place it in a bowl.
3. Lift upper water tank and let it drain into lower tank, and set it aside. Then lift lower tank off base and empty. Careful, a full tank can be very heavy!
4. Clean the water tanks and the cover with warm soapy water. **NOTE:** Remove filter timer before washing lid. Filter timer is not immersible.
5. The base is not immersible. Simply wipe it clean with a damp cloth.
6. Dry thoroughly when clean.

TROUBLESHOOTING

Symptom	Possible Cause	Solution
On/Off Power button does not light up.	Unit might not be plugged into outlet.	Check the wall outlet for power. Make sure the outlet is not controlled by a wall switch.
It takes longer than 45 minutes for the water to pass through the filter.	Some air is still in the filter.	Place filter in an empty bowl, then fill with water, making sure it is fully submerged. Resoak it for 10-15 minutes, or until no more bubbles are observed.
Unit does not dispense water when buttons are pushed.	<ol style="list-style-type: none"> 1. Water tank is not filled with water. 2. Air is still in internal tanks. 	Review setup process on page 4 in this Instruction Booklet to be sure it was done correctly. Make certain the lower/filtered water tank is full of water. Continue pressing push buttons until water flows from spigots. If still not dispensing, contact Customer Service.
Water continues flowing from spigot after push button is released.	Push button is stuck.	Remove water tanks from the base. Continue pressing button until it no longer sticks.
HOT water LED does not light up.	<ol style="list-style-type: none"> 1. Power is not on. 2. There is no water in tanks. 	<ol style="list-style-type: none"> 1. Make sure unit is plugged into outlet. 2. Make sure air has been purged from internal tanks, as stated on page 5 in this Instruction Booklet. 3. If there is water in the tanks, it will take about 10 minutes for the water to heat.
COLD water LED does not light up.	<ol style="list-style-type: none"> 1. Power is not on. 2. There is no water in tanks. 	<ol style="list-style-type: none"> 1. Make sure unit is plugged into outlet. 2. Make sure air has been purged from internal tanks, as stated on page 5 in this Instruction Booklet. 3. If there is water in the tanks, it will take about 80 minutes for the water to chill the first time. It takes only about 30 minutes for subsequent fill-ups.
Filter Timer does not show "Filtering" or "Replace."	Battery is dead.	Contact Customer Service for replacement filter timer.
Leakage on the countertop.	<ol style="list-style-type: none"> 1. Water tanks are not properly seated on base. 2. Drainage plugs are not fully engaged. 	<ol style="list-style-type: none"> 1. Make sure water tanks are seated properly on the base. 2. Ensure that drainage plugs are correctly installed on the bottom of the base.
Water leaks from the top cover.	Water tanks are overfilled.	Drain excess water from tanks by pressing push buttons.
ROOM temperature water is warm.		HOT and ROOM temperature water must be used on a regular basis.

STORING THE UNIT

- 1. Turn the unit off and unplug it from outlet.
- 2. Remove empty water tanks, filter and cover.
- 3. Allow hot water to cool, then bring base to sink.
- 4. Drain internal reservoir by tilting unit slightly and removing the 2 plastic drainage plugs from bottom of unit. Plugs are tightly inserted and must be gently, but firmly, worked to remove.
- 5. When water has completely drained, replace plugs, tanks, filter and cover.
- 6. Your Cuisinart® CleanWater™ Countertop Filtration System is ready to store.



TECHNICAL SPECIFICATIONS

Unit: WCH-950		1 Cuisinart® CleanWater™ Countertop Filtration System
		1 Cuisinart® Water Filter
System Capacity		up to 3-4 months/ 80 gallons/ 302 liters
Maximum Temperature		194°F (90°C)
Minimum Temperature		44.6°F (7°C)
Rated Service Flow		10 gallons / 37.85 liters per day (may vary according to water conditions)



System Tested and Certified by NSF International against NSF/ANSI Standard 53 for the reduction of Benzene, Cadmium, Copper, Mercury, Tetrachloroethylene, Toluene, and Standard 42 for the reduction of Chlorine Taste and Odor.

See Performance Data Sheet for specific test conditions and results.

Claims are calculated based on NSF accepted practice of average percent reduction. The contaminants or other substances removed or reduced by this water treatment device are not necessarily in all users' water. Do not use with water that is microbiologically unsafe or of unknown quality without adequate disinfection before or after the system. Individuals requiring water of specific microbiological purity should consult their physician.

The Cuisinart® CleanWater™ Countertop Filtration System processes approximately 80 gallons/ 302 liters. When the Cuisinart® Water Filter (GF-80) exceeds filtering capacity, replacement is essential for the product to perform as represented. In the United States, replacement filters cost generally \$19.99 per filter. Replacement filters may be purchased at most retail outlets. The performance of the filter may vary based on local water conditions.

Hot water should not be used with the Cuisinart® Water Filter (GF-80) as it will affect the filter's performance.

Refer to the Operating Instructions and Cleaning and Care for general unit operation and maintenance requirements. Testing was performed under standard laboratory conditions; actual performance may vary.

PERFORMANCE DATA SHEET

PERFORMANCE DATA SHEET FOR MODELS WCH-850 AND WCH-950

CONTAMINANT REMOVAL DATA IMPORTANT NOTICE:

Read this Performance Data Sheet and compare the capabilities of this unit with your actual water treatment needs. It is recommended that, before purchasing a water treatment unit, you have your water supply tested to determine your actual water treatment needs.

Performance testing conducted by NSF International. These systems have been tested according to NSF Standard 53 and 42 for reduction of the substances listed below. The concentration of the indicated substances in water entering the system was reduced to a concentration less than or equal to the permissible limit for the water leaving the system, as specified in NSF Standard 53 and Standard 42.

Testing was performed under standard laboratory conditions; actual performance may vary.

			Removal	Removal	Action Level	Hardness	Temp	Inlet	
Substance	Influent Water Avg. (ug/L)	Influent Challenge Concentration (mg/L)	Filter Effluent Max. (ug/L)	Percent Reduction (%)	Max. Permissible Product Water Concentration (mg/L)	CaCO3 (ppm)	Testing Compart. (°C)	PH	Reduction Requirement
NSF/ANSI Standard 42-Aesthetic Effects									
Chlorine Taste and Odor Reduction	2.0	2.0+/-10%	N/A	97.5%	N.A.	N.A.	20	7.53	≥50
NSF/ANSI Standard 53-Health Effects									
Copper	3150	3.0+/-10%	870	85.0%	1.3	16	20	6.42	N/A
Copper	3100	3.0+/-10%	1000	85.4%	1.3	120	19	8.42	N/A
Mercury	6.2	0.006+/-10%	0.9	92.8%	0.002	22	19	6.45	N/A
Mercury	5.7	0.006+/-10%	1.2	89.9%	0.002	140	20	8.55	N/A
Cadmium	28.8	0.03+/-10%	2.2	96.6%	0.005	18	20	6.59	N/A
Cadmium	300	0.03+/-10%	4.0	92.5%	0.005	120	20	8.44	N/A
Benzene	15	0.015+/-10%	3.4	84.1%	0.005	130	20	7.58	N/A
Toluene	2900	3.0+/-10%	770	89.8%	1	320	20	7.54	N/A
Tetrachloroethylene	14	0.015+/-10%	3	92.5%	0.005	340	21	7.56	N/A

State of California
Department of Public Health
Water Treatment Device
Certificate Number

07 - 1887

Date Issued: September 10, 2007

Trademark/Model Designation

WCH-950

Replacement Elements

GF-80

Manufacturer: Conair Corporation (Cuisinart Division)

The water treatment device(s) listed on this certificate have met the testing requirements pursuant to Section 116830 of the Health and Safety Code for the following health related contaminants:

Microbiological Contaminants and Turbidity

None

Inorganic/Radiological Contaminants

Cadmium

Copper

Mercury

Organic Contaminants

Benzene

Tetrachloroethylene

Toluene

Rated Service Capacity: 80 gal

Rated Service Flow: n/a

Conditions of Certification:

Do not use with water that is microbiologically unsafe or of unknown quality, without adequate disinfection before or after the system.

WARRANTY

LIMITED THREE-YEAR WARRANTY

This warranty is available to consumers only. You are a consumer if you own a Cuisinart® CleanWater™ Countertop Filtration System that was purchased at retail for personal, family or household use. Except as otherwise required under applicable law, this warranty is not available to retailers or other commercial purchasers or owners.

We warrant that your Cuisinart® CleanWater™ Countertop Filtration System will be free of defects in materials and workmanship under normal home use for 3 years from the date of original purchase.

We suggest you complete and return the enclosed product registration card promptly to facilitate verification of the date of original purchase.

However, return of the product registration card does not eliminate the need for the consumer to maintain the original proof of purchase in order to obtain the warranty benefits. In the event that you do not have proof of purchase date, the purchase date for purposes of this warranty will be the date of manufacture.

If your Cuisinart® CleanWater™ Countertop Filtration System should prove to be defective within the warranty period, we will repair it, or if we think necessary, replace it.

To obtain warranty service, simply call our toll-free number 1-800-726-0190 for additional information from our Customer Service Representatives, or send the defective product to Customer Service at:

Cuisinart
150 Milford Road
East Windsor, NJ 08520.

To facilitate the speed and accuracy of your return, please enclose \$10.00 for shipping and handling of the product.

Please pay by check or money order (California residents need only supply proof of purchase and should call 1-800-726-0190 for shipping instructions).

NOTE: For added protection and secure handling of any Cuisinart® product that is being returned, we recommend you use a traceable, insured delivery service. Cuisinart cannot be held responsible for in-transit damage or for packages that are not delivered to us. Lost and/or damaged products are not covered under warranty. Please be sure to include your return address, daytime phone number, description of the product defect, product model number (located on bottom of product), original date of purchase, and any other information pertinent to the product's return.

Your Cuisinart® CleanWater™ Countertop Filtration System has been manufactured to the strictest specifications and has been designed for use with the authorized accessories and replacement parts.

This warranty expressly excludes any defects or damages caused by accessories, replacement parts, or repair service other than those that have been authorized by Cuisinart.

This warranty does not cover any damage caused by accident, misuse, shipment or other ordinary household use.

This warranty excludes all incidental or consequential damages. Some states do not allow the exclusion or limitation of these damages, so they may not apply to you.

CALIFORNIA RESIDENTS ONLY

California law provides that for In-Warranty Service, California residents have the option of returning a nonconforming product (A) to the store where it was purchased or (B) to another retail store which sells Cuisinart products of the same type.

The retail store shall then, at its discretion, either repair the product, refer the consumer to an independent repair facility, replace the product, or refund the purchase price less the amount directly attributable to the consumer's prior usage of the product. If the above two options do not result in the appropriate relief to the consumer, the consumer may then take the product to an independent repair facility if service or repair can be economically accomplished. Cuisinart and not the consumer will be responsible for the reasonable cost of such service, repair, replacement, or refund for nonconforming products under warranty.

California residents may also, according to their preference, return nonconforming products directly to Cuisinart for repair, or if necessary, replacement, by calling our Consumer Service Center toll-free at 1-800-726-0190.

Cuisinart will be responsible for the cost of the repair, replacement, and shipping and handling for such products under warranty.

BEFORE RETURNING YOUR CUISINART® PRODUCT

If you are experiencing problems with your Cuisinart® product, we suggest that you call our Cuisinart® Service Center at 1-800-726-0190 before returning the product serviced. If servicing is needed, a Representative can confirm whether the product is under warranty and direct you to the nearest service location.

Important: If the nonconforming product is to be serviced by someone other than Cuisinart's Authorized Service Center, please remind the servicer to call our Consumer Service Center at 1-800-726-0190 to ensure that the problem is properly diagnosed, the product is serviced with the correct parts, and the product is still under warranty.

PURCHASES MADE IN IOWA



For purchases made in Iowa:

This form must be signed and dated by the buyer and seller prior to consummation of this sale.
This form should be retained on file by the seller for a minimum of two years.

BUYER:

SELLER:

Name

Name

Address

Address

City State Zip

City State Zip

Signature Date

Signature Date

Cuisinart®

SAVOR THE GOOD LIFE™



Cuisinart offers an extensive assortment of top quality products to make life in the kitchen easier than ever. Try some of our other countertop appliances and cookware, and Savor the Good Life™.

www.cuisinart.com

©2008 Cuisinart
Cuisinart® is a registered
trademark of Cuisinart

150 Milford Road
East Windsor, NJ 08520
1-800-726-0190
Printed in China

Any trademarks or service marks of third parties referred to herein are the trademarks or service marks of their respective owners.

07CU26656

G IB-7514B

Version No.:	IB-7514B
Fold Size:	140MM(W)X216MM(H) 12PP OLD SAME AS IB-7514A
Material:	Cover: 157GSM MATT ARTPAPER
	Inside: 120GSM GLOSS ARTPAPER
Coating:	GLOSS VARNISHING IN COVER
Color (Cover):	4C(CMYK)+1C(BK)
	(Inside): 1C(BK)+1C(BK)
Date:	NOV-12-2007
	Co-ordinator : Astor You
Hugo Description:	WCH950 IB-7514B (2,0) BOOK
Hugo Code:	AGL0001IB-1C1
	Operator : FEN

