

# instruction card for weld isolation tools 8" or >

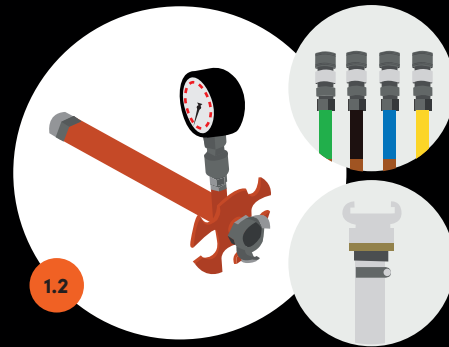


## 1. check that the set is complete before starting assembly

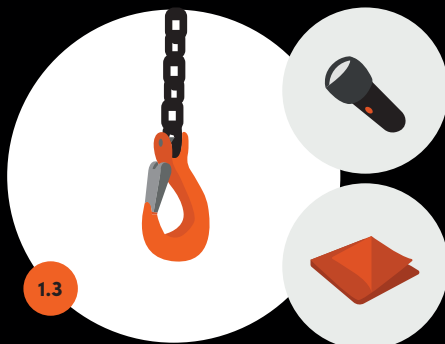


### delivered as standard

- 1x certificate
- 1x instruction card
- 1x weld isolation tool
- 1x hoisting hook with retaining pin

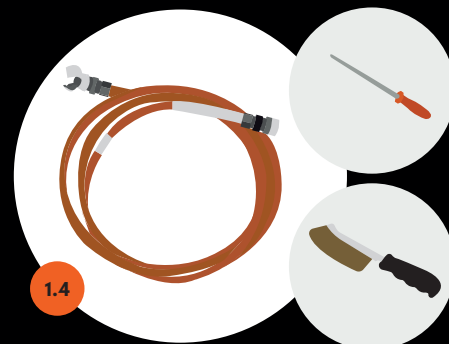


- 1x vent pipe with pressure gauge
- 1x set of hoses
- 1x vent hose
- 1x low-pressure pump



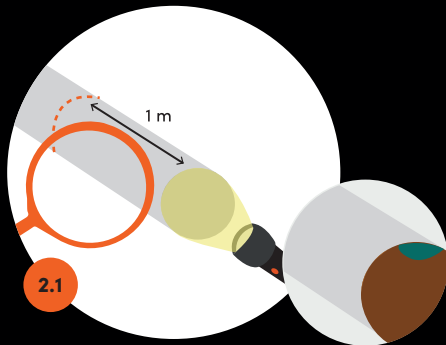
### not delivered as standard

- 1x drip tray
- water (recommendation: 25 litres)
- 1x degreasing agent
- 1x dry cloth
- 1x pocket torch
- 1x crane or block and tackle for hoisting



- 1x welding blanket
- 1x purge hose
- 1x file
- 1x wire brush

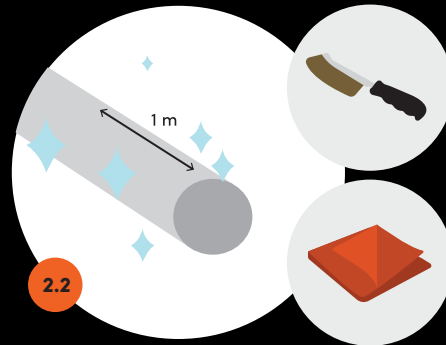
# assembly keep out of the line of fire at all times and make sure that the venting system is never closed off



2.1

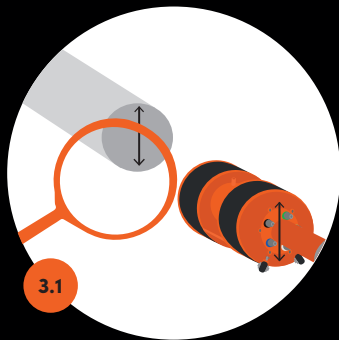
## 2. assess the pipe

Check the inside of the pipe to see if corrosion or residues are present



2.2

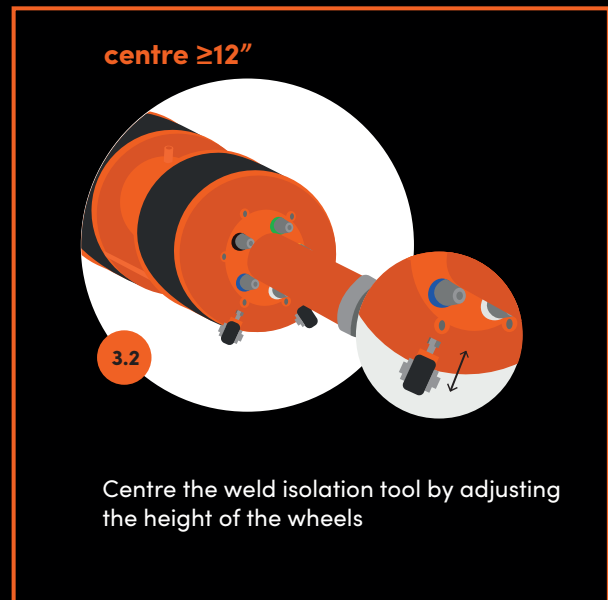
Clean and degrease the inside of the pipe



3.1

## 3. place the weld isolation tool in the pipe

Check that the stated dimensions of the pipe match the tool's specifications



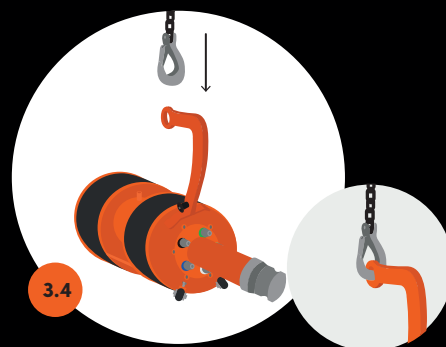
3.2

Centre the weld isolation tool by adjusting the height of the wheels



3.3

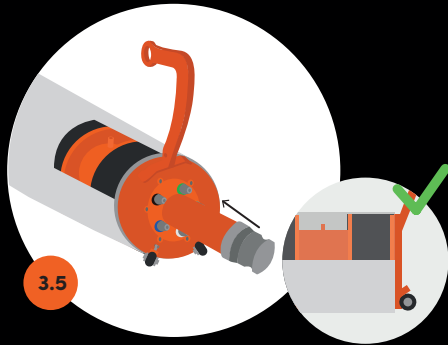
Connect the hoisting hook to the weld isolation tool



3.4

Connect the hoist to the weld isolation tool's hoisting hook

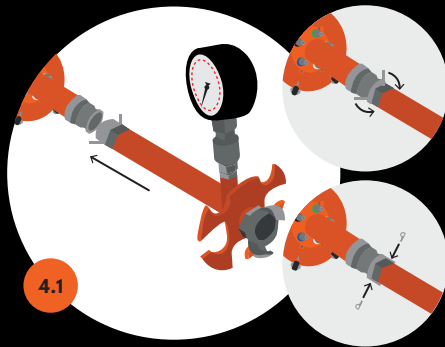
# assembly



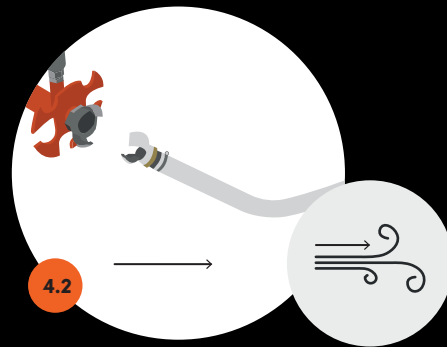
3.5 Lift the weld isolation tool into the pipe using the hoist



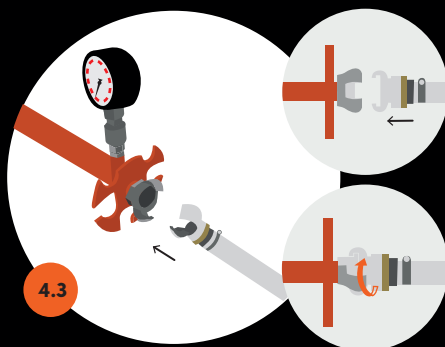
3.6 Disconnect the hoist from the weld isolation tool's hoisting hook



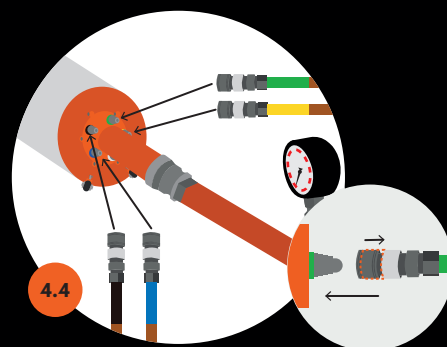
4.1 **4. connect up the accessories**  
Connect the vent pipe with the pressure gauge to the weld isolation tool. Click the two clamps closed and lock them in place using the retaining pins



4.2 Unroll the venting hose fully and place it downwind



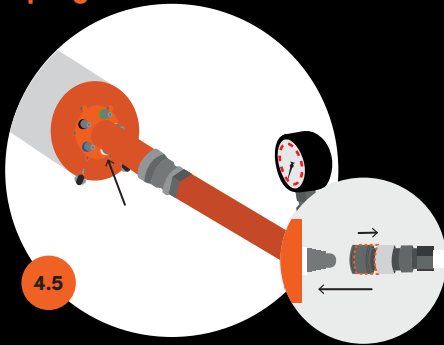
4.3 Connect the venting hose up to the vent pipe using the locking nut



4.4 Connect the set of hoses onto the weld isolation tool using the correct colour codes

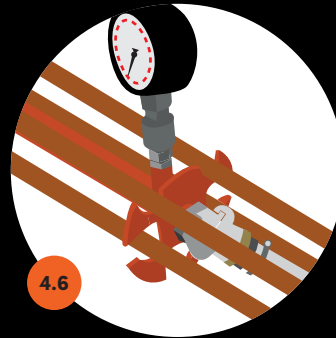
# assembly

## purge



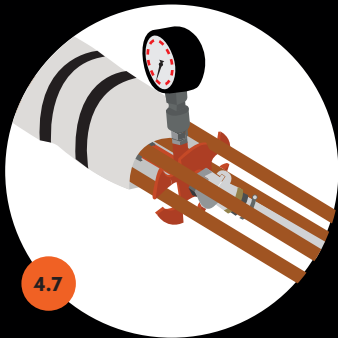
4.5

(optional) If present, connect the **purge hose** up to the weld isolation tool



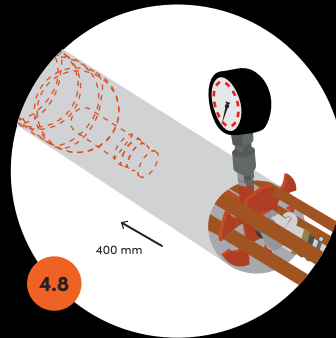
4.6

Lay the hoses in the vent pipe's hose guide



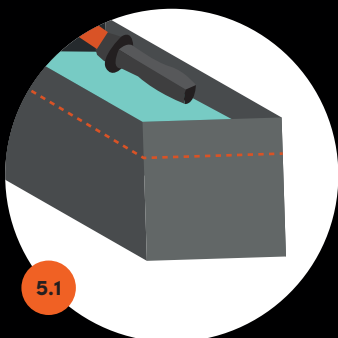
4.7

Wrap the welding blanket around the hoses as tightly as possible and fix it in place



4.8

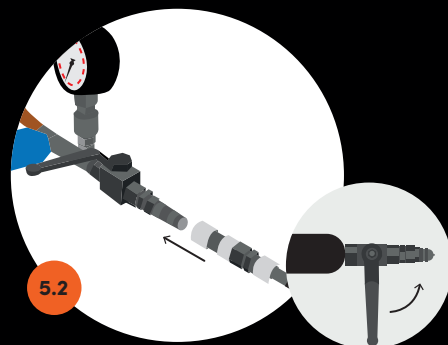
Roll the weld isolation tool at least 400 mm into the pipe



5.1

## 5. put the tyres under water pressure

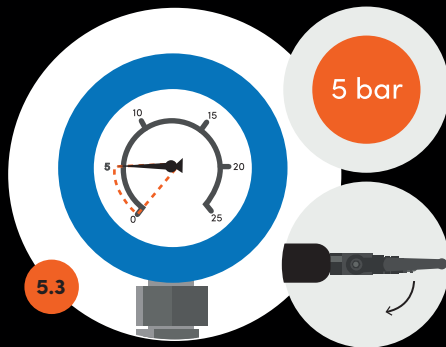
Fill the low-pressure pump with (enough) water and close the return valve of the low-pressure pump



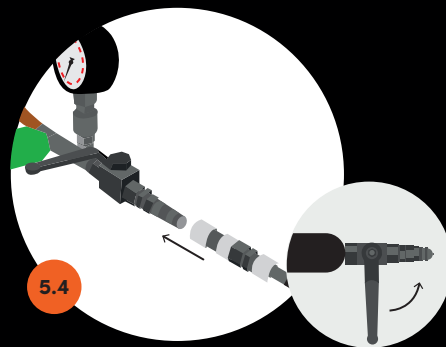
5.2

Connect the pump hose to the **rear tyre** connection and open the stop valve of the **rear tyre** connection

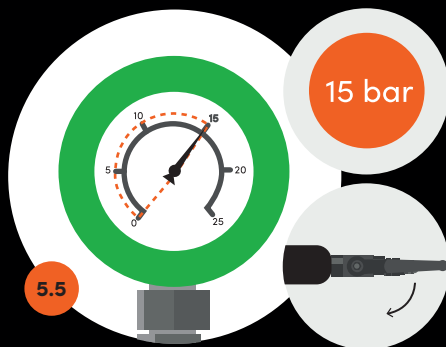
# assembly



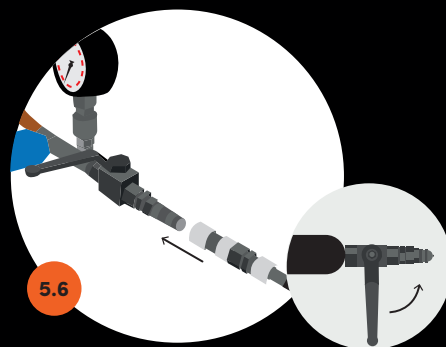
Pump the **rear tyre** up to **5 bar**. Close the stop valve of the **rear tyre** connection. Open the low-pressure pump's return valve and then close it again



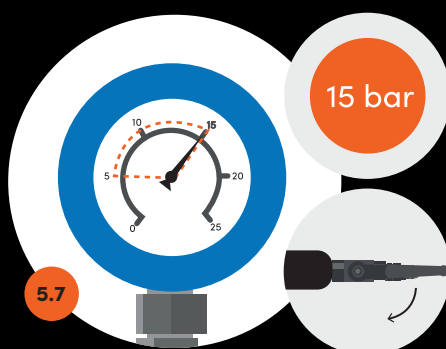
Connect the pump hose to the **front tyre** connection and open the stop valve of the **front tyre** connection



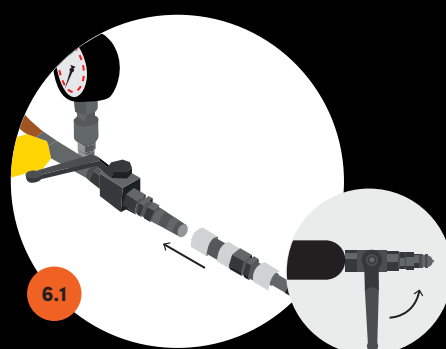
Pump the **front tyre** up to **15 bar**. Close the stop valve of the **front tyre** connection. Open the low-pressure pump's return valve and then close it again



Connect the pump hose to the **rear tyre** connection and open the stop valve of the **rear tyre** connection

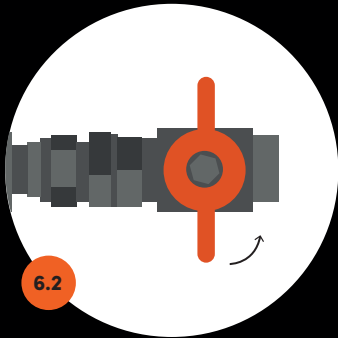


Pump the **rear tyre** up to **15 bar**. Close the stop valve of the **rear tyre** connection. Open the low-pressure pump's return valve and then close it again



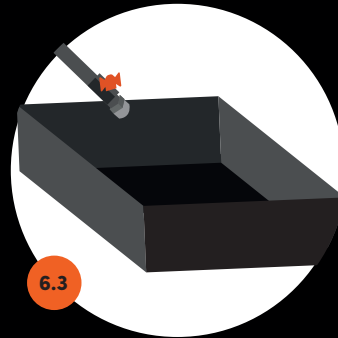
**6. create a water trap**  
Connect the pump hose to the **fill** connection. Open the stop valve of the **fill** connection

# assembly



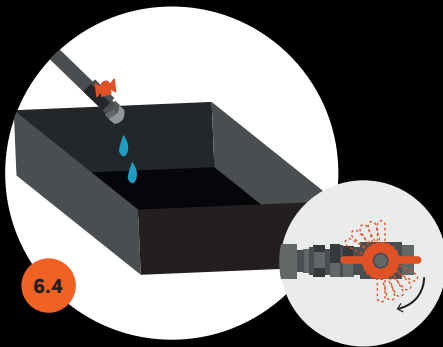
6.2

Open the stop valve of the **vent** connection



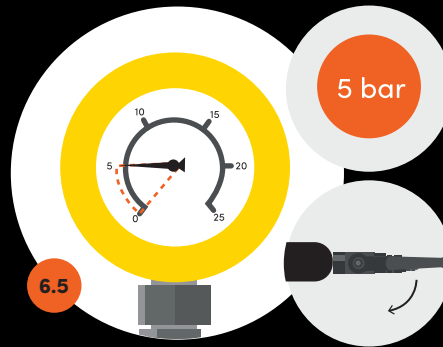
6.3

Put the end of the **vent** connection in a drip tray



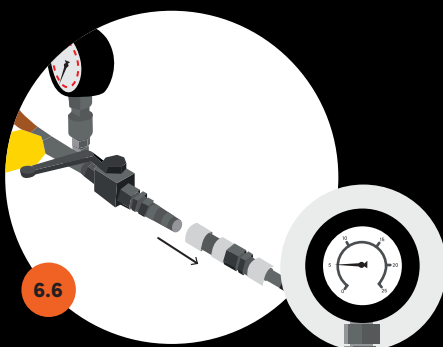
6.4

Pump until water comes out of the **vent** connection to bleed the air. Keep pumping and get a second person to close the **vent** connection's stop valve gradually in the meantime



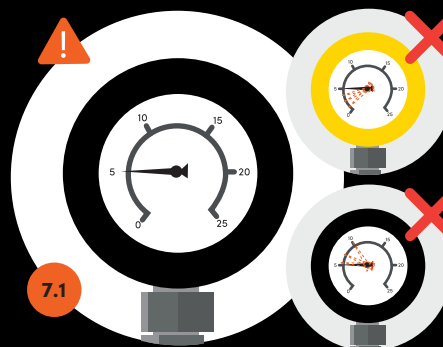
6.5

Keep pumping until the **fill** connection's pressure gauge reads **5 bar** and then close the **fill** connection's stop valve. Open the low-pressure pump's return valve and then close it again



6.6

Check that the pressure of the water trap does not drop below 3 bar. Release the pressure from the pump hose. Then disconnect it from the **fill** connection

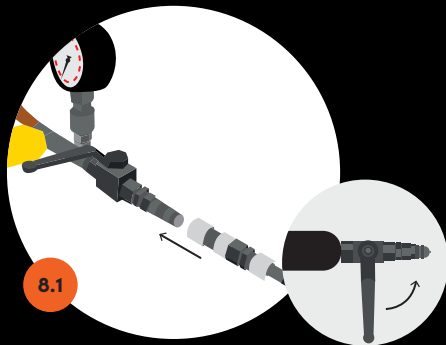


7.1

## 7. safety monitoring

If the pressure of the **fill** rises or if the **venting pipe** falls during operation, stop the work immediately

# disassembly keep out of the line of fire at all times and make sure that the venting system is never closed off



8.1

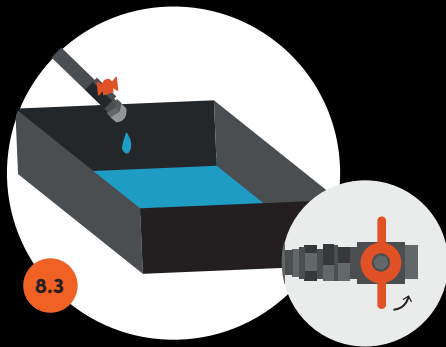
## 8. release the pressure from the water trap

Connect the pump hose to the **fill** connection. Open the stop valve of the **fill** connection and open the low-pressure pump's return valve



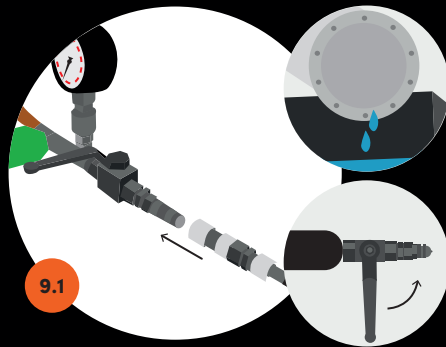
8.2

Disconnect the pump hose from the **fill** connection



8.3

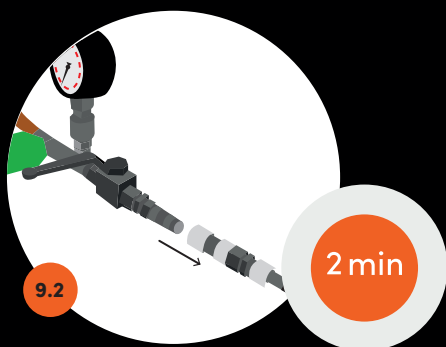
Put the end of the vent hose in the drip tray. Open the stop valve of the **vent** connection



9.1

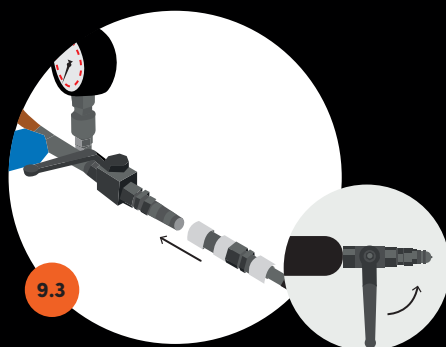
## 9. release the pressure from the tyres

Put the drip tray in place. Open the stop valve of the low-pressure pump. Connect the pump hose to the **front tyre** connection. Open the return valve of the **front tyre** connection



9.2

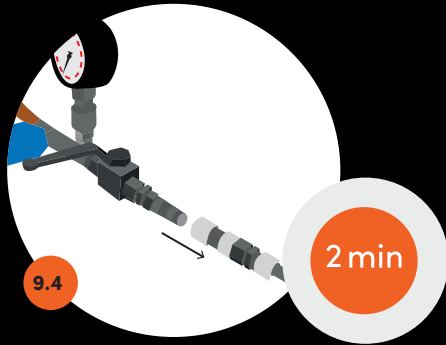
Wait for 2 minutes and then disconnect the pump hose from the **front tyre** connection



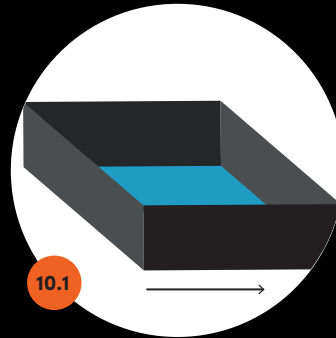
9.3

Open the stop valve of the water pump. Connect the pump hose to the **rear tyre** connection. Open the stop valve of the **rear tyre** connection

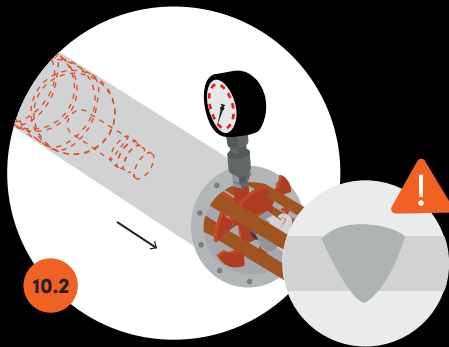
# disassembly



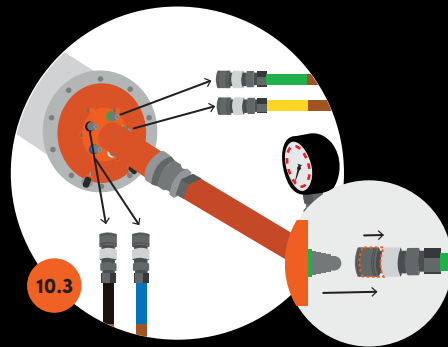
Wait for 2 minutes. Disconnect the pump hose from the **rear tyre** connection



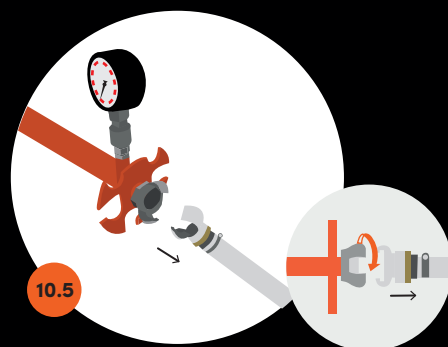
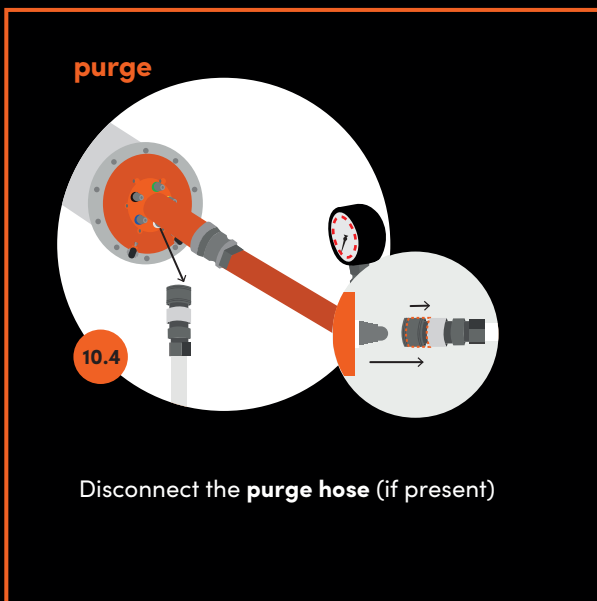
**10. remove the accessories of the weld isolation tool**  
Remove the drip tray



Pull the weld isolation tool forwards. Mind the sharp edges of the weld penetration that will be present



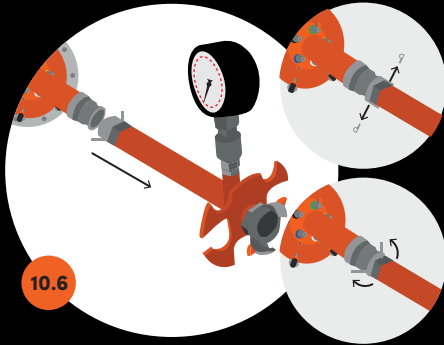
Remove the welding blanket and disconnect the hose set



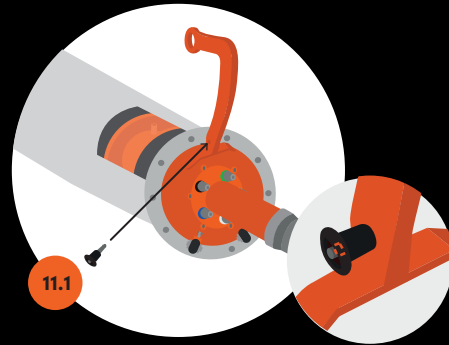
Undo the locking nut and remove the venting hose



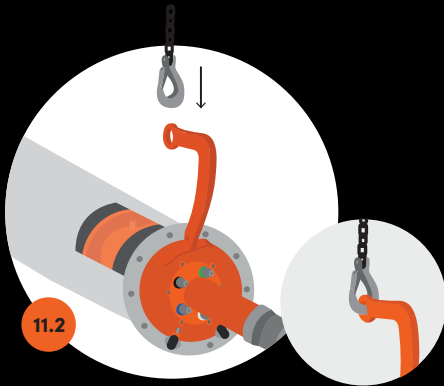
# disassembly



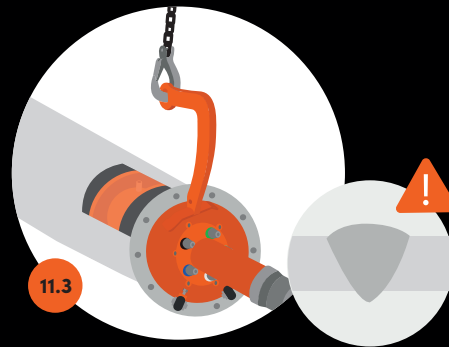
10.6  
Disconnect the vent pipe



11.1  
**11. remove the weld isolation tool**  
Connect the hoisting hook to the weld isolation tool



11.2  
Connect the hoist to the weld isolation tool's hoisting hook



11.3  
Remove the weld isolation tool from the pipe. Mind the sharp edges of the weld penetration that will be present



11.4  
Disconnect the hoist from the weld isolation tool's hoisting hook



12.1  
**12. clean the weld isolation tool**  
Clean the weld isolation tool