

INSTRUCTION MANUAL



S. Coifman



MOVEMENT CALIBER
1069

MOVEMENT CALIBER : 1069

 **PRESENTATION**

Display Elements

Minute Hand

Hour Hand

Second Hand



Control Buttons
Crown Positions:

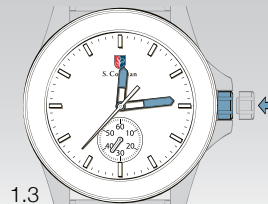
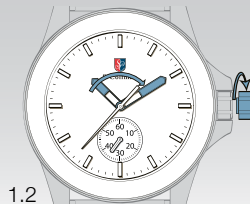
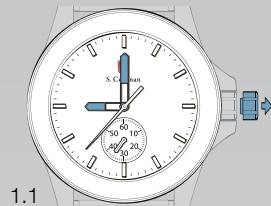
1. Normal position
2. Setting of hour, minute

MOVEMENT CALIBER : 1069

SETTINGS

Setting the Time

- 1.1 Pull the crown to position 2.
- 1.2 Turn the crown clockwise to set the hour / minute hands to the desired time.
- 1.3 Push the crown back to position 1.



MOVEMENT CALIBER
2330/130 & 763

MOVEMENT CALIBER : 2330 / 130 & 763

 **PRESENTATION**

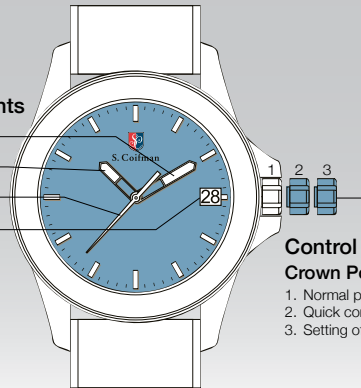
Display Elements

Minute Hand

Hour Hand

Second Hand

Date



Control Buttons

Crown Positions:

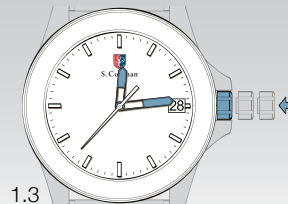
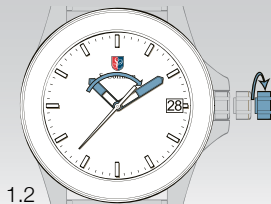
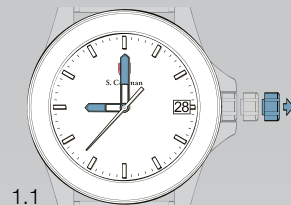
1. Normal position
2. Quick correction of date
3. Setting of hour, minute, date

MOVEMENT CALIBER : 2330 / 130 & 763

SETTINGS

Setting the Time

- 1.1 Pull the crown to position 3.
- 1.2 Turn the crown clockwise to set the hour / minute hands to the desired time.
- 1.3 Push the crown back to position 1.



MOVEMENT CALIBER : 2330 / 130 & 763

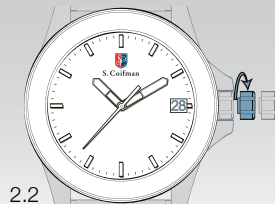
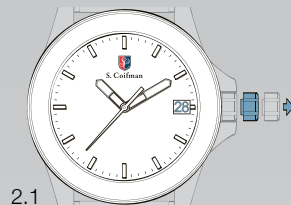
SETTINGS

Quick Correction of Date

- 3.1 Set the crown to position 2.
- 3.2 Turn the crown clockwise step-by-step to the desired date.
- 3.3 Push the crown back to position 1.

!! Attention !!

Please Do Not set between 21:00 and 00:30.



MOVEMENT CALIBER
3540.D



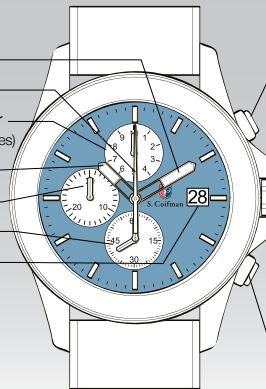
Battery: 384
(diametaer 7.9mm x 3.6mm / SR 41 Accuracy: +20 / -10 seconds per monthSW)

MOVEMENT CALIBER : 3540.D

PRESENTATION

Display Elements

- Minute Hand
- Center Stop-Second
- 1/10 Second Counter
(Hour counter after 30 minutes)
- Hour Hand
- Minute Counter
- Second Hand
- Date



Control Buttons

Push Button A



Crown Positions:

1. Normal position
2. Quick correction of date
3. Correction of hour, minute, day, date and second time zone / 24-hour

Push Button B

MOVEMENT CALIBER : 3540.D

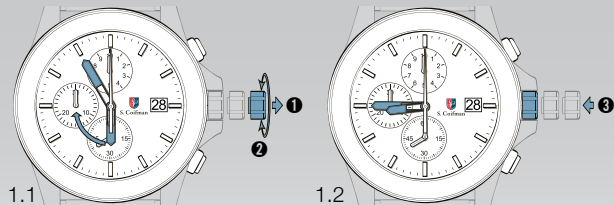
SETTINGS

Setting the Time

- ➊ Pull out the crown to position 3 (the watch stops).*
- ➋ Turn the crown until you reach the correct time 8:45.
- ➌ Push the crown back into position 1.*

Please note

* In order to set the time to the exact second, ➊ must be pulled out when the second hand is in position «60». Once the hour and minute hands have been set, ➌ must be pushed back into position 1 at the exact second.



MOVEMENT CALIBER : 3540.D

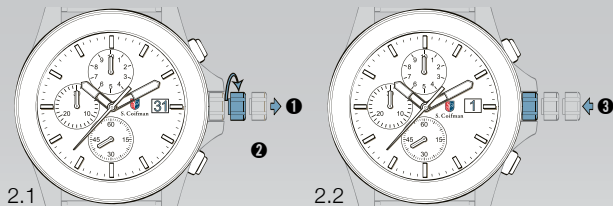
SETTINGS

Setting the Date (Quick Mode)

- ➊ Pull out the crown to position 2 (the watch continues to run).
- ➋ Turn the crown until the correct date 1 appears.
- ➌ Push the crown back into position 1.

Please note:

The date can be changed during the date changing phase between 8:30 PM and 12:00 PM; please note that the date must be set to the date of the following day as in this case, the automatic date changing does not occur at midnight.



MOVEMENT CALIBER : 3540.D

SETTINGS

Setting the Date / Time

Example:

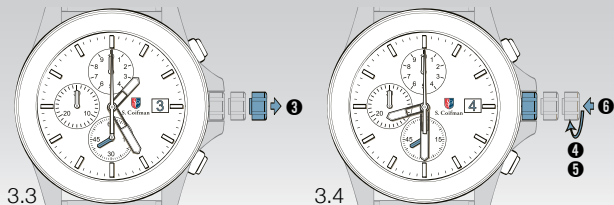
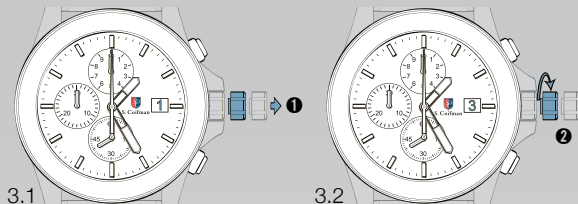
- Date / time on the watch: / 1:25 AM
- Present date / time: / 8:30 PM

- ➊ Pull out the crown to position 2 (the watch continues to run).
- ➋ Turn the crown until yesterday's date appears .
- ➌ Pull out the crown to position 3 (the watch stops).*
- ➍ Turn the crown until the correct date appears.
- ➎ Continue to turn the crown until the correct time 8:30 PM appears.**
- ➏ Push the crown back into position 1.

Please note:

* To set your watch to the exact second, please refer to chapter titled "Setting the Time".

** Please observe the AM / PM clock rhythm.



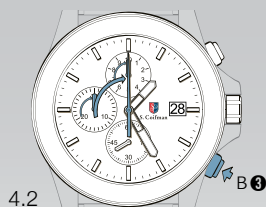
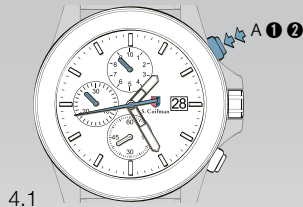
MOVEMENT CALIBER : 3540.D

FUNCTIONS

Chronograph: Basic Function (Start / Stop / Reset)

Example:

- 1 Start: Press push button A.
- 2 Stop: To stop the timing, press push button A once more and read the 3 chronograph counters: 4 min / 38 sek / 7/10 sec
- 3 Zero positioning: Press push button B.
(The 3 chronograph hands will be reset to their zero position).



MOVEMENT CALIBER : 3540.D

FUNCTIONS

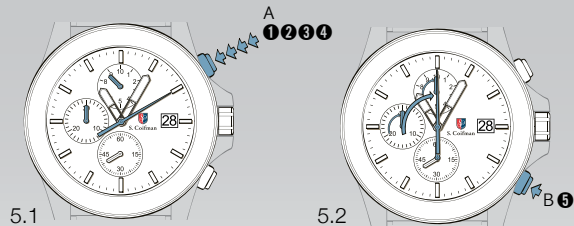
Chronograph: Accumulated Timing

Example:

- 1 Start: (start timing)
- 2 Stop: (e.g. 15 min 5 sec following 1)
- 3 Restart: (timing is resumed)
- 4 Stop: (e.g. 13 min 5 sec following 3)
= 28 min 10 sec (The accumulated measured time is shown)*
- 5 Reset: The 3 chronograph hands are returned to their zero position.

Please note:

* Following 4, the accumulation of the timing can be continued by pressing push button A (Restart / Stop, Restart / Stop, ...)



FUNCTIONS

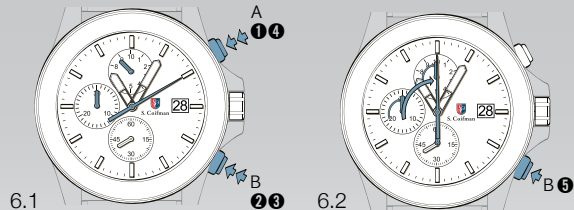
Chronograph: Intermediate or Interval Timing

Example:

- 1 Start: (start timing)
- 2 Display interval: e.g. 10 minutes 10 seconds
(timing continues in the background)
- 3 Making up the measured time:
(the 3 chronograph hands are quickly advanced to the ongoing measured time).
- 4 Stop: (Final time is displayed)
- 5 Reset: The 3 chronograph hands are returned to their zero position.

Please note:

* Following 4, the accumulation of the timing can be continued by pressing push button A (Restart / Stop, Restart / Stop, ...)



CALIBRATION

Adjusting the Chronograph Hands to Zero Position

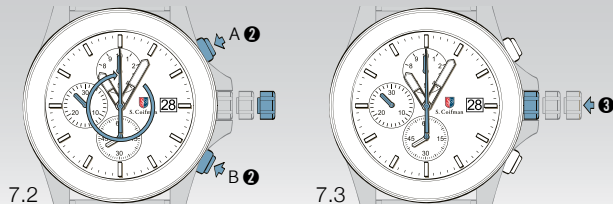
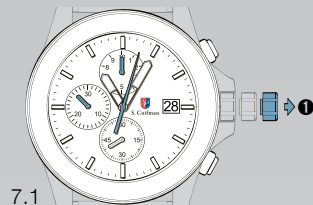
Example:

One or several chronograph hands are not in their correct zero position and have to be adjusted (e.g. following a battery change).

- 1** Pull out the crown to position 3
(all 3 chronograph hands are in their correct or incorrect zero position).
- 2** Keep push-buttons A and B depressed simultaneously for at least 2 seconds (the center stop-second rotates by 360° → corrective mode is activated).

Adjusting the center stop second → Single step A1 x short → Continuous A long → Adjusting the next hand B → Adjusting the 1/10 second counter hand (position 6h) → Single step A1 x short → Continuous A long → Adjusting the next hand B → Adjusting the minute counter (position 9h) → Single step A1 x short → Continuous A long

- 3** Returning the crown to position 1. Termination of the chronograph hands adjustment can be carried out at any time.



MOVEMENT CALIBER 5040.D



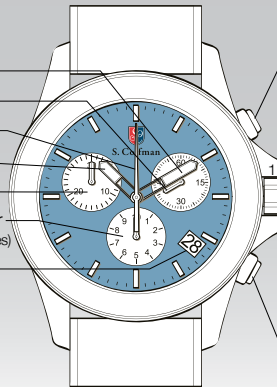
Battery: 395
(diameter 9.5mm x 2.6mm / SR 927 SW) Accuracy: +20 / -10 seconds per month

MOVEMENT CALIBER : 5040.D

PRESENTATION

Display Elements

- Minute Hand
- Center Stop-Second
- Second Hand
- Hour Hand
- Minute Counter
- 1/10 Second Counter
(Hour counter after 30 minutes)
- Date Window



Control Buttons

Push Button A
Quick correction of month

Crown Positions:

1. Normal position
2. Quick correction of date
3. Correction of hour, minute, day, date and second time zone / 24-hour

Push Button B
Quick correction of second time zone / 24-hour

MOVEMENT CALIBER : 5040.D

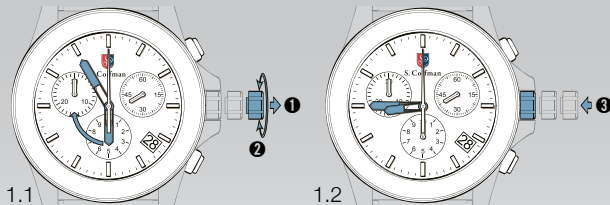
SETTINGS

Setting the Time

- ❶ Pull out the crown to position 3 (the watch stops).*
- ❷ Turn the crown until you reach the correct time 8:45.
- ❸ Push the crown back into position 1.*

Please note

* In order to set the time to the exact second, ❶ must be pulled out when the second hand is in position «60».
Once the hour and minute hands have been set, ❸ must be pushed back into position 1 at the exact second.



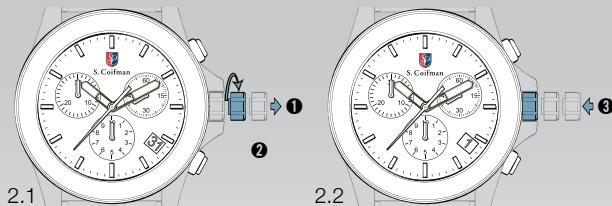
SETTINGS

Setting the Date (Quick Mode)

- ➊ Pull out the crown to position 2 (the watch continues to run).
- ➋ Turn the crown until the correct date 1 appears.
- ➌ Push the crown back into position 1.

Please note:

The date can be changed during the date changing phase between 8:30 PM and 12:00 PM; please note that the date must be set to the date of the following day as in this case, the automatic date changing does not occur at midnight.



MOVEMENT CALIBER : 5040.D

SETTINGS

Setting the Date / Time

Example:

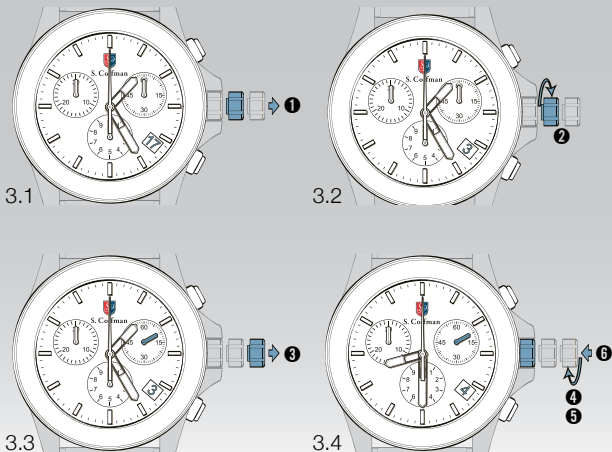
- Date / time on the watch: / 1:25 AM
- Present date / time: / 8:30 PM

- ➊ Pull out the crown to position 2 (the watch continues to run).
- ➋ Turn the crown until yesterdays date appears .
- ➌ Pull out the crown to position 3 (the watch stops).*
- ➍ Turn the crown until the correct date appears.
- ➎ Continue to turn the crown until the correct time 8:30 PM appears.**
- ➏ Push the crown back into position 1.

Please note:

* To set your watch to the exact second, please refer to chapter titled "Setting the Time".

** Please observe the AM / PM clock rhythm.



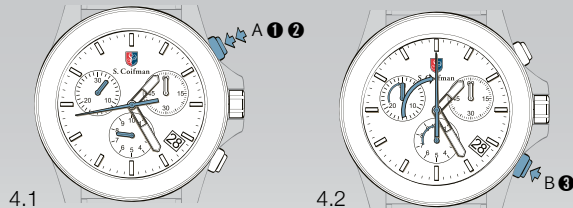
MOVEMENT CALIBER : 5040.D

FUNCTIONS

Chronograph: Basic Function (Start / Stop / Reset)

Example:

- 1** Start: Press push button A.
- 2** Stop: to stop the timing, press push button A once more and read the 3 chronograph counters: 4 min / 38 sek / 7/10 sec
- 3** Zero positioning: Press push button B.
(The 3 chronograph hands will be reset to their zero position).



MOVEMENT CALIBER : 5040.D

FUNCTIONS

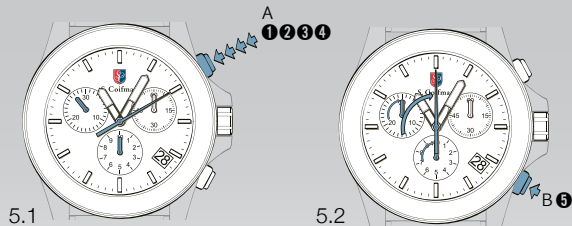
Chronograph: Accumulated Timing

Example:

- ➊ Start: (start timing)
- ➋ Stop: (e.g. 15 min 5 sec following ➊)
- ➌ Restart: (timing is resumed)
- ➍ Stop: (e.g. 13 min 5 sec following ➌)
= 28 min 10 sec (The accumulated measured time is shown)*
- ➎ Reset: The 3 chronograph hands are returned to their zero position.

Please note:

* Following ➍, the accumulation of the timing can be continued by pressing push button A (Restart / Stop, Restart / Stop, ...)



FUNCTIONS

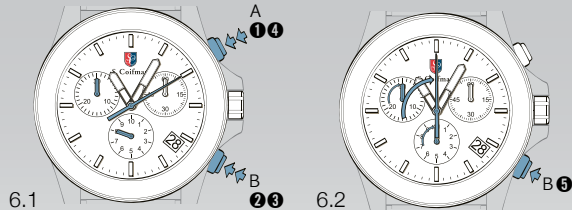
Chronograph: Intermediate or Interval Timing

Example:

- ➊ Start: (start timing)
- ➋ Display interval: e.g. 10 minutes 10 seconds
(timing continues in the background)
- ➌ Making up the measured time:
(the 3 chronograph hands are quickly advanced to the ongoing measured time).
- ➍ Stop: (Final time is displayed)
- ➎ Reset: The 3 chronograph hands are returned to their zero position.

Please note:

* Following ➍, the accumulation of the timing can be continued by pressing push button A (Restart / Stop, Restart / Stop, ...)



CALIBRATION

Adjusting the Chronograph Hands to Zero Position

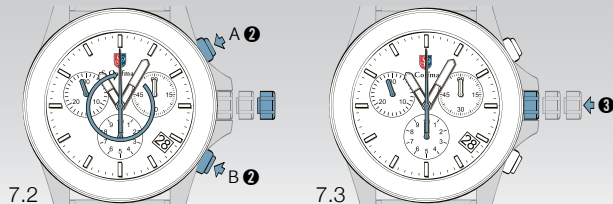
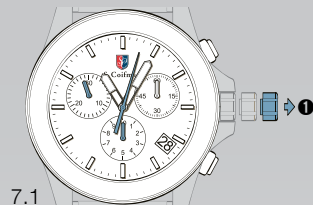
Example:

One or several chronograph hands are not in their correct zero position and have to be adjusted (e.g. following a battery change).

- 1** Pull out the crown to position 3
(all 3 chronograph hands are in their correct or incorrect zero position).
- 2** Keep push-buttons A and B depressed simultaneously for at least 2 seconds (the center stop-second rotates by 360° → corrective mode is activated).

Adjusting the center stop second → Single step A1 x short → Continuous A long → Adjusting the next hand B → Adjusting the 1/10 second counter hand (position 6h) → Single step A1 x short → Continuous A long → Adjusting the next hand B → Adjusting the minute counter (position 9h) → Single step A1 x short → Continuous A long

- 3** Returning the crown to position 1. Termination of the chronograph hands adjustment can be carried out at any time.



MOVEMENT CALIBER
6497

MOVEMENT CALIBER : 6497

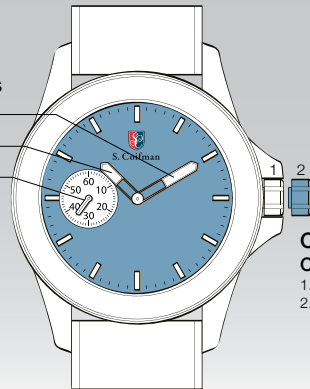
 **PRESENTATION**

Display Elements

Minute Hand

Hour Hand

Second Hand



Control Buttons
Crown Positions:

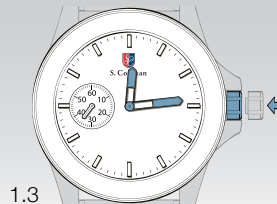
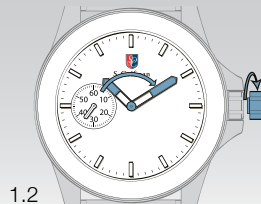
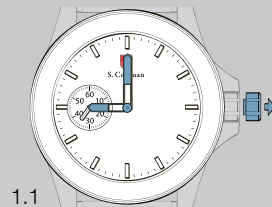
1. Normal position
2. Setting of hour, minute

MOVEMENT CALIBER : 6497


SETTINGS

Setting the Time

- 1.1 Pull the crown to position 2.
- 1.2 Turn the crown clockwise to set the hour / minute hands to the desired time.
- 1.3 Push the crown back to position 1.



MOVEMENT CALIBER
7004.P

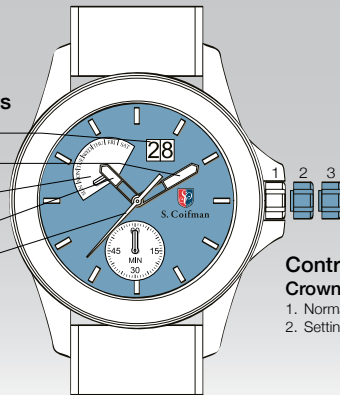
 **INFO** Battery: 381 (diameter 11.6mm x 2.15mm)

MOVEMENT CALIBER : 7004.P

 **PRESENTATION**

Display Elements

Date —
Minute Hand —
Day —
Hour Hand —
Second Hand —



Control Buttons

Crown Positions:

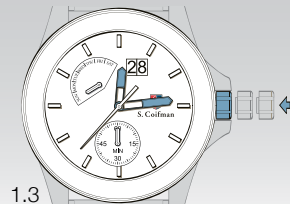
1. Normal position
2. Setting of hour, minute, day

MOVEMENT CALIBER : 7004.P

SETTINGS

Setting the Time

- 1.1 Pull the crown to position 3.
- 1.2 Turn the crown to set the hour / minute hands to the desired time.
- 1.3 Push the crown back to position 1.



MOVEMENT CALIBER : 7004.P

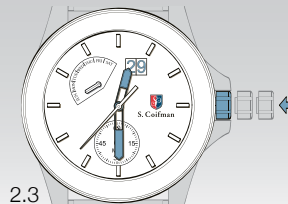
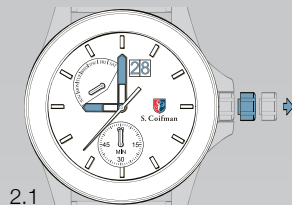
SETTINGS

Setting the Date (Quick Mode)

- 2.1 Pull the crown to position 2.
- 2.2 Turn the crown clockwise. Continue to turn the crown until the desired date is set.
- 2.3 Push the crown back to position 1.

Please note:

An extreme acceleration in setting the date with quick mode can create a false date indication. The synchronization is re-established by setting the date from 01 till 31 (crown position 2).



MOVEMENT CALIBER : 7004.P

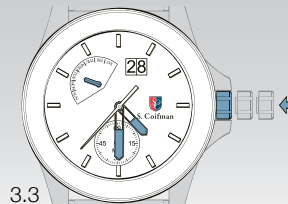
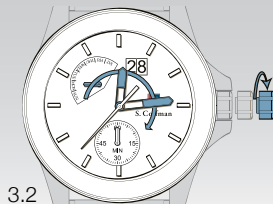
SETTINGS

Setting the Day (Quick Mode)

- 3.1 Set the crown to position 3.
- 3.2 Turn the crown clockwise to advance the day hand until the desired day is set.
- 3.3 Push the crown back to position 1.

Please note:

70% of power is saved when the crown is pulled out.



MOVEMENT CALIBER
7750

MOVEMENT CALIBER : 7750

 **PRESENTATION**

Display Elements

30 Minute Counter

Minute Hand

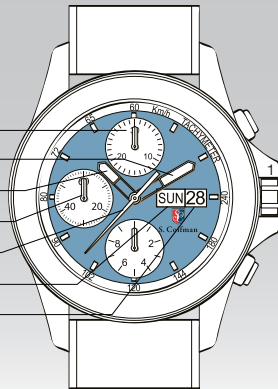
Hour Hand

Second Hand

60 Second Hand

Day

Date



Control Buttons

Crown Positions:



1. Normal position
2. Setting of hour, minute, day

MOVEMENT CALIBER : 7750

SETTINGS

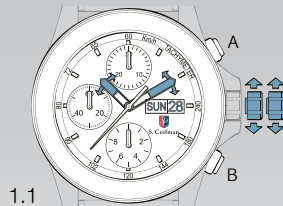
Crown 3 Positions

Rapid date and day correction is not possible between 8 p.m. and 2 a.m.

1. Normal running of watch and hand-winding
2.  Rapid correction of the date
 Rapid correction of the day
3. Position for setting the time with stop second and correction of the date at every passing of midnight

Please note:

The movement of the wrist winds the watch.



MOVEMENT CALIBER : 7750

FUNCTIONS

Simple Timing Function

Setting crown in position 1

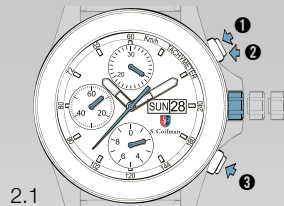
❶ to ❸ order of functions

❶ START

❷ STOP : Read time

- 2 hours, 10 minutes, 8 seconds

❸ Reset to zero



MOVEMENT CALIBER : 7750

FUNCTIONS

ADD Function

Setting crown in position 1

① to X order of functions

① START

② STOP Read

③ RESTART

④ STOP Read

⑤ RESTART

⑥ STOP Read

•

•

•

X Reset to zero



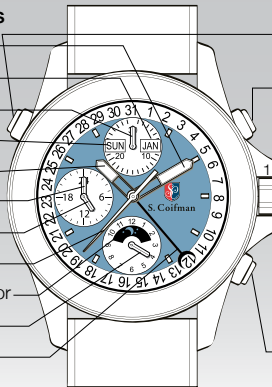
MOVEMENT CALIBER
7751

MOVEMENT CALIBER : 7751

 **PRESENTATION**

Display Elements

- Minute Hand
- Month Indicator
- 30 Minute Counter
- Day Indicator
- Hand Hour
- Second Hand
- 24 Hour Hand
- 60 Second Hand
- Moon Phase Indicator
- 12 Hour Counter
- Date Hand



Control Buttons

Push Button C (Option)

Quick correction of day

Push Button A

Quick correction of date.

Crown Positions:

1. Normal position
2. Correction of hour, minute, day, date and second time zone / 24-hour

Push Button B



Split / Reset

MOVEMENT CALIBER : 7751

SETTINGS

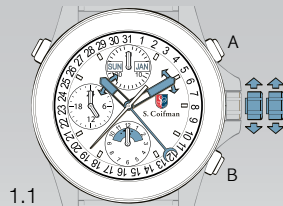
Crown 3 Positions

Date correction is not recommended between 10 p.m. and 2 p.m.
The moon phase cannot be corrected between 3 a.m. and 4 a.m.

1. Normal running of watch and hand-winding
2.  Rapid correction of the date
 Rapid correction of the moon phase
3. Position for setting the time with stop second and correction of the date at every passing of midnight

Please note:

The movement of the wrist winds the watch.



MOVEMENT CALIBER : 7751

FUNCTIONS

Simple Timing Function

Setting crown in position 1

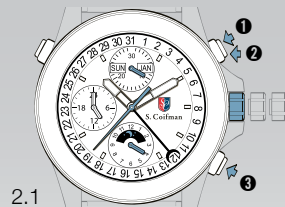
❶ to ❸ order of functions

❶ START

❷ STOP : Read time

- 4 hours, 10 minutes, 8 seconds

❸ Reset to zero



MOVEMENT CALIBER : 7751

FUNCTIONS

ADD Function

Setting crown in position 1

① to ✕ order of functions

① START

② STOP Read

③ RESTART

④ STOP Read

⑤ RESTART

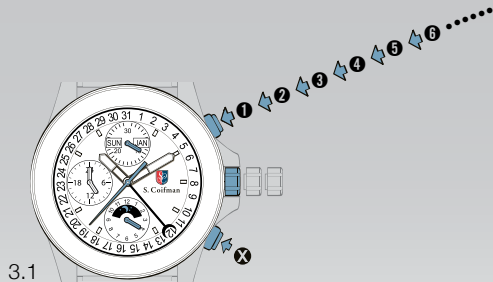
⑥ STOP Read

•

•

•

✕ Reset to zero



MOVEMENT CALIBER 8040.N



Battery: 384
(diametaer 7.9mm x 3.6mm / SR 41 Accuracy: +20 / -10 seconds per monthSW)

MOVEMENT CALIBER : 8040.N



Display Elements

- Minute Hand
- Day
- Hour Hand
- Minute Counter
- Center Stop-Second
- Second Hand
- 1/10 Second Counter
(Hour counter after 30 minutes)
- Date

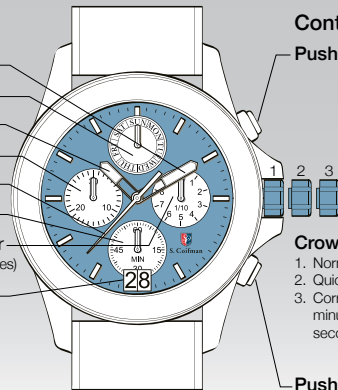
Control Buttons

Push Button A

Crown Positions:

1. Normal position
2. Quick correction of date
3. Correction of hour, minute, day, date and second time zone / 24-hour

Push Button B



MOVEMENT CALIBER : 8040.N

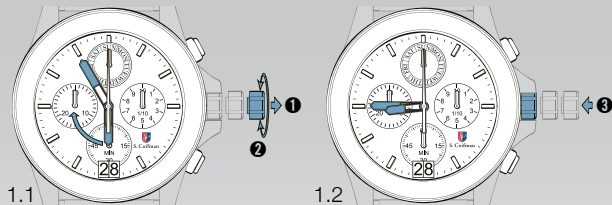
SETTINGS

Setting the Time

- ➊ Pull out the crown to position 3 (the watch stops).*
- ➋ Turn the crown until you reach the correct time 8:45.
- ➌ Push the crown back into position 1.*

Please note

* In order to set the time to the exact second, ➊ must be pulled out when the second hand is in position «60».
Once the hour and minute hands have been set, ➌ must be pushed back into position 1 at the exact second.



MOVEMENT CALIBER : 8040.N

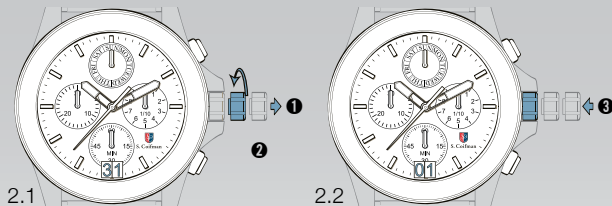
SETTINGS

Setting the Date (Quick Mode)

- ➊ Pull out the crown to position 2 (the watch continues to run).
- ➋ Turn the crown counter clockwise until the correct date 1 appears.
- ➌ Push the crown back into position 1.

Please note:

During the date changing phase between 9 PM and 12 PM; the date must be set to the date of the following day. An extreme acceleration in setting the date with quick mode can create a false date indication. The synchronization is re-established by setting the date from 01 till 31 (crown in position 2).



SETTINGS

Setting the Date / Weekday and Time

Example:

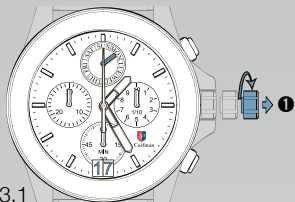
- Date / time on the watch: 17 / 1:25 AM / MON
- Present date / time: 23 / 20:30 PM / SAT

- 1 Pull out the crown to position 3 (the watch stops).
- 2 Turn the crown until yesterday's weekday FRI appear.
- 3 Pull out the crown to position 3.
- 4 Turn the crown backwards until yesterday's date appears 22 .
- 5 Pull out the crown to position 3 (the watch stops).*
- 6 Turn the crown until the correct date 23 and weekday SAT appears.
- 7 Continue to turn the crown until the correct time 8:35 PM appears.**
- 8 Push the crown back into position 1.

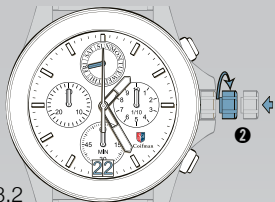
Please note:

* To set your watch to the exact second, please refer to chapter titled "Setting The Time".

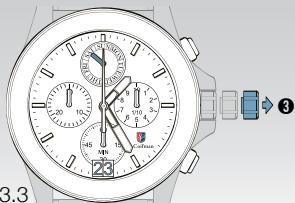
** Please observe the AM / PM clock rhythm.



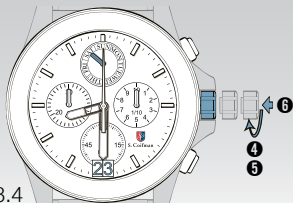
3.1



3.2



3.3



3.4

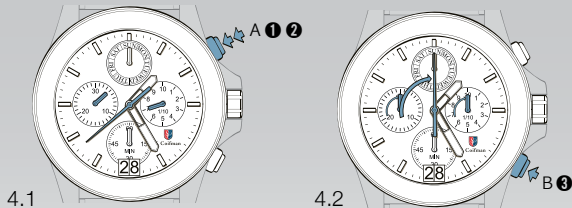
MOVEMENT CALIBER : 8040.N

FUNCTIONS

Chronograph: Basic Function (Start / Stop / Reset)

Example:

- 1 Start: Press push button A.
- 2 Stop: To stop the timing, press push button A once more and read the 3 chronograph counters: 4 min / 38 sek / 7/10 sec
- 3 Zero positioning: Press push button B.
(The 3 chronograph hands will be reset to their zero position).



MOVEMENT CALIBER : 8040.N

FUNCTIONS

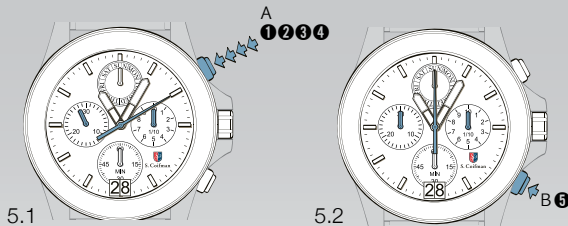
Chronograph: Accumulated Timing

Example:

- ➊ Start: (start timing)
- ➋ Stop: (e.g. 15 min 5 sec following ➊)
- ➌ Restart: (timing is resumed)
- ➍ Stop: (e.g. 13 min 5 sec following ➌)
= 28 min 10 sec (The accumulated measured time is shown)*
- ➎ Reset: The 3 chronograph hands are returned to their zero position.

Please note:

* Following ➍, the accumulation of the timing can be continued by pressing push button A (Restart / Stop, Restart / Stop, ...)



FUNCTIONS

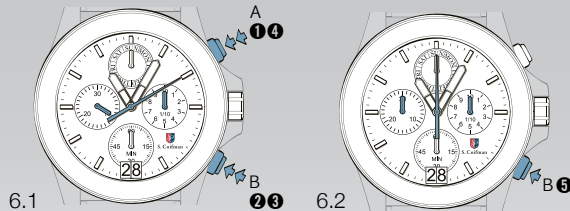
Chronograph: Intermediate or Interval Timing

Example:

- ➊ Start: (start timing)
- ➋ Display interval: e.g. 10 minutes 10 seconds
(timing continues in the background)
- ➌ Making up the measured time:
(the 3 chronograph hands are quickly advanced to the ongoing measured time).
- ➍* Stop: (Final time is displayed)
- ➎ Reset: The 3 chronograph hands are returned to their zero position.

Please note:

* Following ➍, the accumulation of the timing can be continued by pressing push button A (Restart / Stop, Restart / Stop, ...)



CALIBRATION

Adjusting the Chronograph Hands to Zero Position

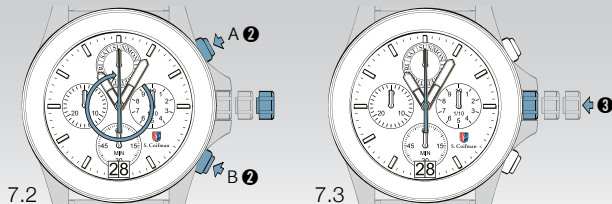
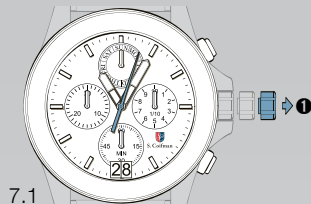
Example:

One or several chronograph hands are not in their correct zero position and have to be adjusted (e.g. following a battery change).

- 1** Pull out the crown to position 3
(all 3 chronograph hands are in their correct or incorrect zero position).
- 2** Keep push-buttons A and B depressed simultaneously for at least 2 seconds (the center stop-second rotates by 360° → corrective mode is activated).

Adjusting the center stop second → Single step A1 x short → Continuous A long → Adjusting the next hand B → Adjusting the 1/10 second counter hand (position 6h) → Single step A1 x short → Continuous A long → Adjusting the next hand B → Adjusting the minute counter (position 9h) → Single step A1 x short → Continuous A long

- 3** Returning the crown to position 1. Termination of the chronograph hands adjustment (can be carried out at any time).



MOVEMENT CALIBER
8171 / 204

MOVEMENT CALIBER : 8171 / 204

 **PRESENTATION**

Display Elements

Second Hand

Minute Hand

30 Minute Totalizer

Hour Hand

Chronograph Hand

1/5 Second

Moon Phase Indicator

Date Window

Control Buttons

Push Button A

Start / Stop

Crown Positions:

1. Normal position
2. Quick correction of date
3. Correction of hour, minute, day, date and second time zone / 24-hour

Push Button B

Split / Reset



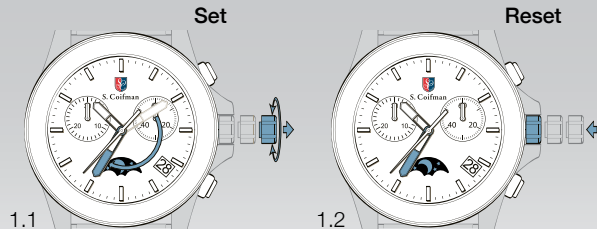
Battery: 395-SR 927W

Service Life Battery : Without chrono = 57 months, with chrono 1H/D = 41 months 031213 1 IM - B

MOVEMENT CALIBER : 8171 / 204

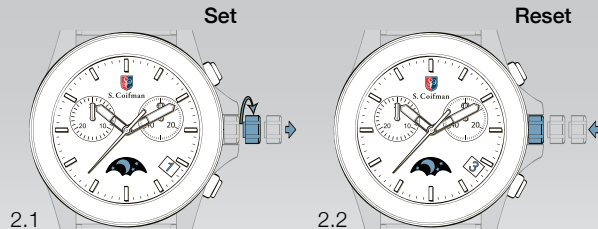
SETTINGS

Setting the Time



To Correct the Date

Caution: Never correct date between 9pm and 0:30am.

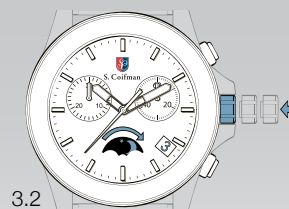
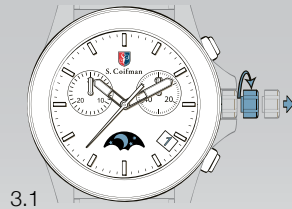


MOVEMENT CALIBER : 8171 / 204

SETTINGS

To Correct the Moonphase

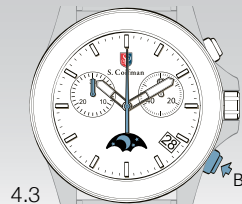
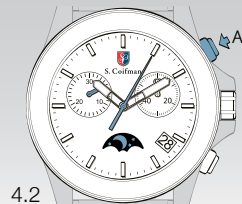
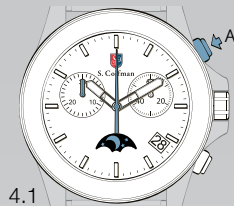
Set the date according to the last full moon.
Afterwards adapt like steps 3.1 and 3.2.



MOVEMENT CALIBER : 8171 / 204

FUNCTIONS

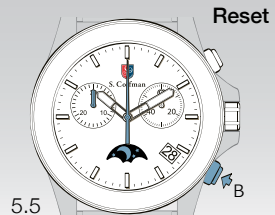
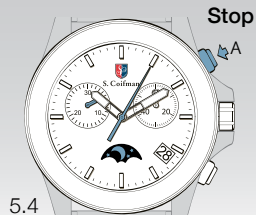
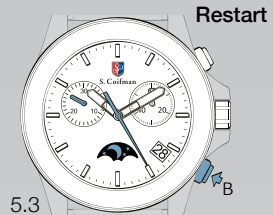
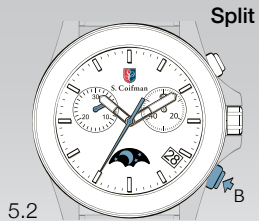
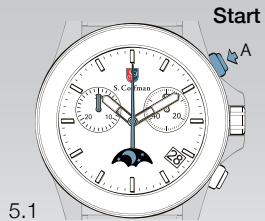
After 2 hours of continuous running, the chrono stops and resets automatically to save the battery.



MOVEMENT CALIBER : 8171 / 204

FUNCTIONS

Measuring Split Times

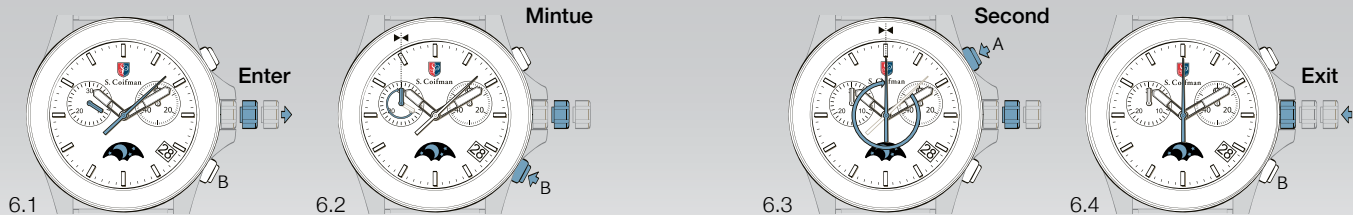


MOVEMENT CALIBER : 8171 / 204

CALIBRATION

After Battery Exchange or Mishandling Only

To reset chronograph, minute and second chronograph.



MOVEMENT CALIBER : 8172 / 220

 **PRESENTATION**

MOVEMENT CALIBER
8172 / 220

Display Elements

Second Hand

Minute Hand

Hour Hand

30 Minute Counter

Chronograph Hand

1/5 Second

Day

Control Buttons

Push Button A

Start / Stop

Crown Positions:

1. Normal position
2. Quick correction of date
3. Correction of hour, minute, day, date and second time zone / 24-hour

Push Button B

Split / Reset



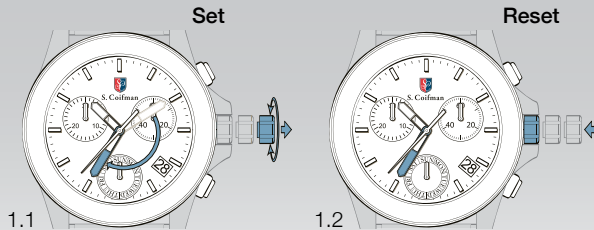
Battery: 395-SR 57

Service Life Battery: Without chrono = 57 months, with chrono 1H/D = 41 month 0312141 IM - B

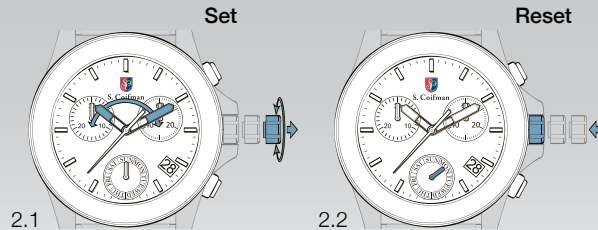
MOVEMENT CALIBER : 8172 / 220

SETTINGS

Setting the Time



To Correct the Day

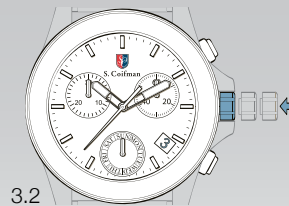
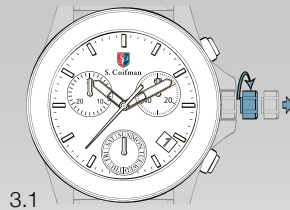


MOVEMENT CALIBER : 8172 / 220

SETTINGS

Setting the Date

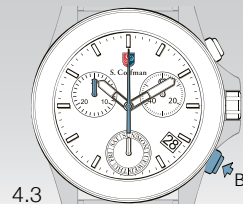
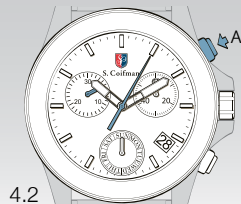
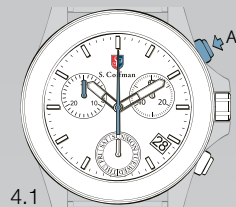
Caution: Never correct date between 9pm and 0:30am.



MOVEMENT CALIBER : 8172 / 220

FUNCTIONS

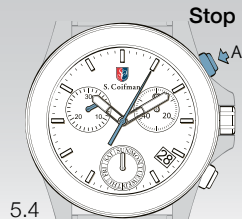
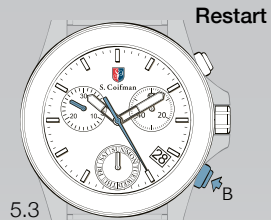
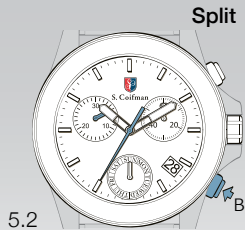
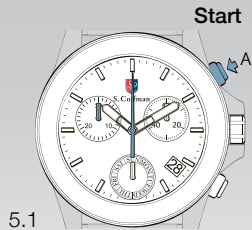
After 2 hours of continuous running,
the chrono stops and resets automatically to save the battery.



MOVEMENT CALIBER : 8172 / 220

FUNCTIONS

Measuring Split Times

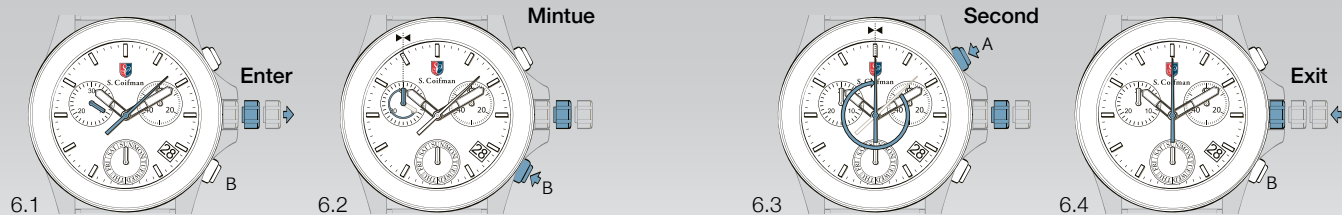


MOVEMENT CALIBER : 8172 / 220

CALIBRATION

After Battery Exchange or Mishandling Only

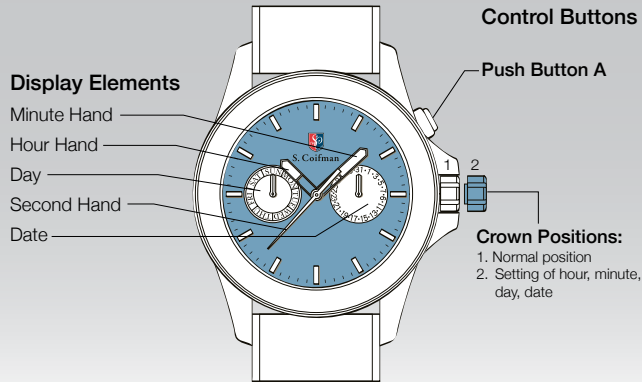
To reset chronograph, minute and second chronograph.




MOVEMENT CALIBER
9231 / 1890

MOVEMENT CALIBER : 9231 / 1890

 **PRESENTATION**



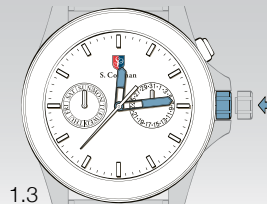
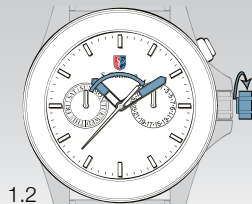
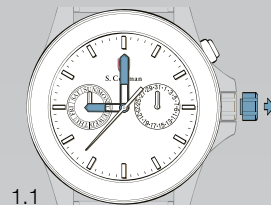
 **INFO** Battery: 371 – SR920SW

MOVEMENT CALIBER : 9231 / 1890

SETTINGS

Setting the Time

- 1.1 Pull the crown to position 2.
- 1.2 Turn the crown clockwise to set the hour / minute hands to the desired time.
- 1.3 Push the crown back to position 1.

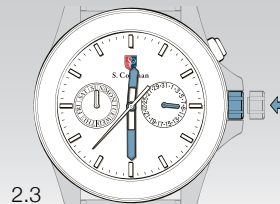
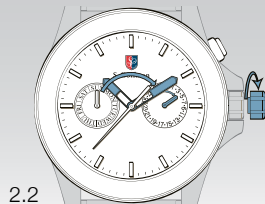
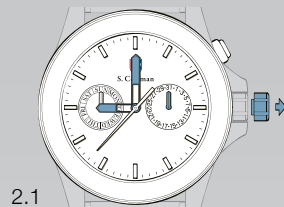


MOVEMENT CALIBER : 9231 / 1890

SETTINGS

Setting the Date

- 2.1 Pull the crown to position 2.
- 2.2 Turn the crown clockwise. Continue to turn the crown until the desired date is set.
- 2.3 Push the crown back to position 1.



MOVEMENT CALIBER : 9231 / 1890

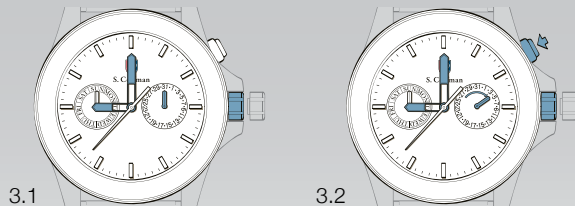
SETTINGS

Quick Correction of Date

- 3.1 Set the crown to position 1.
- 3.2 Press A step-by-step to advance the date until the desired date is set.

!! Attention !!

The date advances at 00:00 midnight, not 12:00 noon.

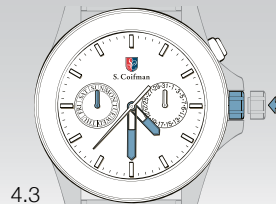
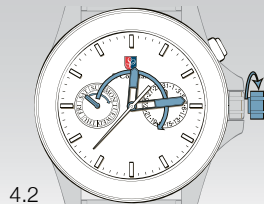


MOVEMENT CALIBER : 9231 / 1890

SETTINGS

Setting the Day

- 4.1 Pull the crown to position 2.
- 4.2 Turn the crown clockwise to advance the day hand until the desired day is set. The day hand will advance one day when 04:00 in the morning is reached.
- 4.3 Push the crown back to position 1.



MOVEMENT CALIBER
9231 / 1900

INFO Battery: 371 – SR920SW

MOVEMENT CALIBER : 9231 / 1900

PRESENTATION

Display Elements

Minute Hand

Hour Hand

Day

Second Hand

Sun and Moon

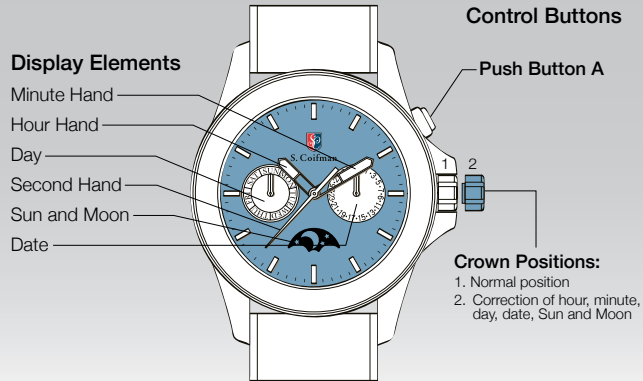
Date

Control Buttons

Push Button A

Crown Positions:

1. Normal position
2. Correction of hour, minute, day, date, Sun and Moon

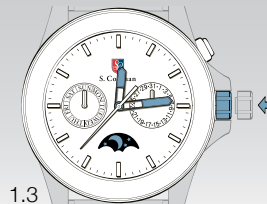
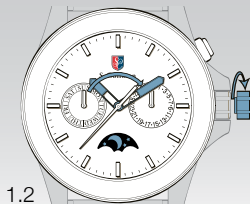
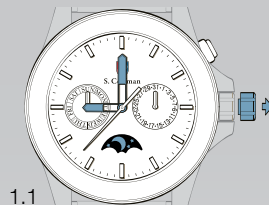


MOVEMENT CALIBER : 9231 / 1900

SETTINGS

Setting the Time, Sun and Moon

- 1.1 Pull the crown to position 2.
- 1.2 Turn the crown clockwise to set the hour / minute hands and Sun and Moon to the desired time.
- 1.3 Push the crown back to position 1.

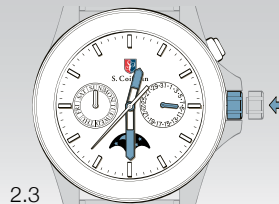
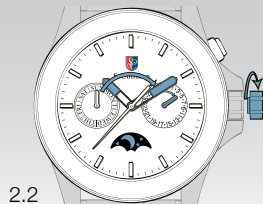
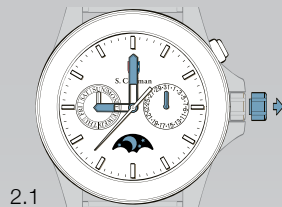


MOVEMENT CALIBER : 9231 / 1900

SETTINGS

Setting the Date

- 2.1 Pull the crown to position 2.
- 2.2 Turn the crown clockwise. Continue to turn the crown until the desired date is set.
- 2.3 Push the crown back to position 1.



MOVEMENT CALIBER : 9231 / 1900

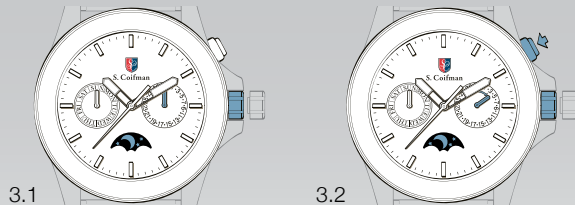
SETTINGS

Quick Correction of Date

- 3.1 Set the crown to position 1.
- 3.2 Press A step-by-step to advance the date until the desired date is set.

!! Attention !!

The date advances at 00:00 midnight, not 12:00 noon.

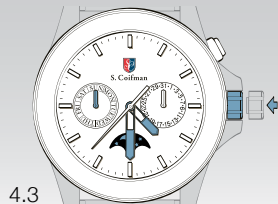


MOVEMENT CALIBER : 9231 / 1900

SETTINGS

Setting the Day

- 4.1 Pull the crown to position 2.
- 4.2 Turn the crown clockwise to advance the day hand until the desired day is set. The day hand will advance one day when 04:00 in the morning is reached.
- 4.3 Push the crown back to position 1.



MOVEMENT CALIBER
9232 / 1920

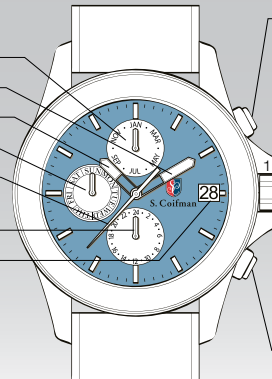
INFO Battery: 371 – SR920SW

MOVEMENT CALIBER : 9232 / 1920

PRESENTATION

Display Elements

Month
Minute Hand
Hour Hand
Day
Second Hand
Second time zone /
24 hour
Date



Control Buttons

Push Button A

Quick correction of month

Crown Positions:

1. Normal position
2. Quick correction of date
3. Correction of hour, minute, day, date and second time zone / 24-hour

Push Button B

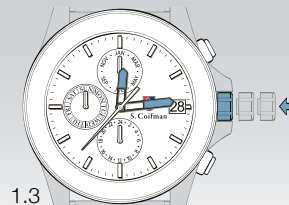
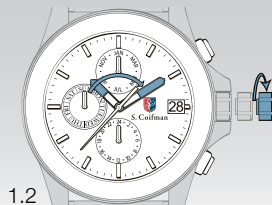
Quick correction of second time zone / 24-hour

MOVEMENT CALIBER : 9232 / 1920

SETTINGS

Setting the Time and 24 Hour

- 1.1 Pull the crown to position 3.
- 1.2 Turn the crown clockwise to set the hour, minute and 24 hour hands to the desired time.
- 1.3 Push the crown back to position 1.

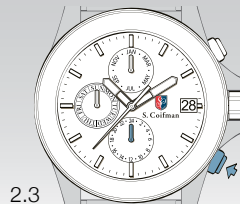
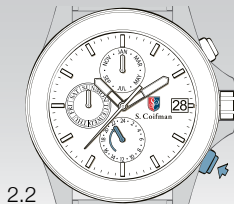
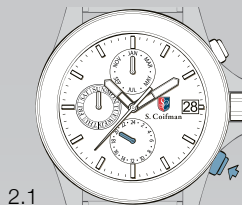


MOVEMENT CALIBER : 9232 / 1920

SETTINGS

Setting the Second Time Zone

- 2.1 Set the crown to position 1.
- 2.2 Press B step-by-step to advance the hand of the second time zone by one hour per step until the desired time is set.
- 2.3 Stop pressing the button when finished setting the time zone.

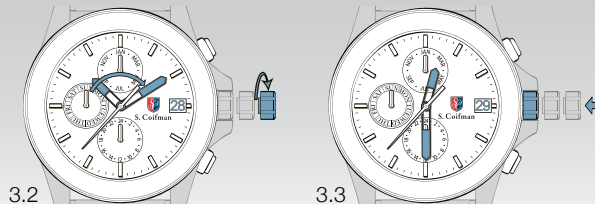
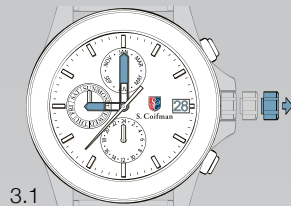


MOVEMENT CALIBER : 9232 / 1920

SETTINGS

Setting the Date

- 3.1 Pull the crown to position 3.
- 3.2 Turn the crown clockwise. The date will advance 1 day when the time reaches 00:00 midnight. Continue to turn the crown until the desired date is set.
- 3.3 Push the crown back to position 1.



MOVEMENT CALIBER : 9232 / 1920

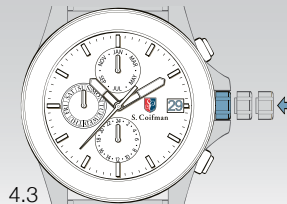
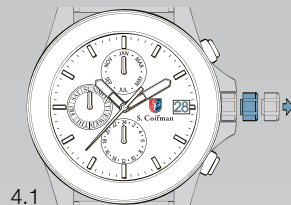
SETTINGS

Quick Correction of Date

- 4.1 Pull the crown out to position 2.
- 4.2 Turn the crown clockwise step-by-step to the desired date.
- 4.3 Push the crown back to position 1.

!! Attention !!

Please Do Not set between 21:00 and 00:30.

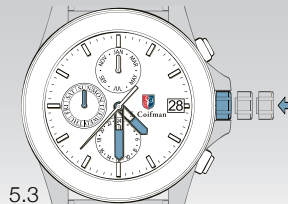
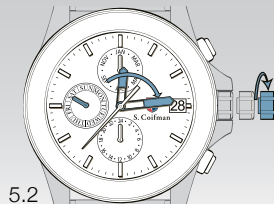


MOVEMENT CALIBER : 9232 / 1920

SETTINGS

Setting the Day

- 5.1 Pull the crown to position 3.
- 5.2 Turn the crown clockwise to advance the day hand until the desired day is set. The day hand will advance one day when 04:00 in the morning is reached.
- 5.3 Push the crown back to position 1.



MOVEMENT CALIBER : 9232 / 1920

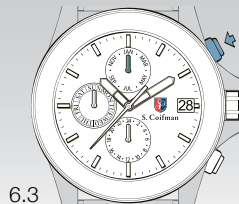
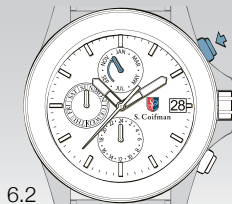
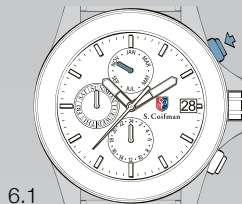
SETTINGS

Quick Correction of Day

- 6.1 Set the crown to position 1.
- 6.2 Press A step-by-step to adjust the month to the desired one.
- 6.3 Release the button after completing the setting.

!! Attention !!

Please Do Not use Quick Correction on 31st of each month.



MOVEMENT CALIBER : 9232 / 1930

 **PRESENTATION**

MOVEMENT CALIBER
9232 / 1930

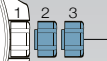
Display Elements

- Month
- Minute Hand
- Hour Hand
- Second Hand
- Second time zone / 24 hour
- Date



Control Buttons


Push Button A
Quick correction of month



Crown Positions:

1. Normal position
2. Quick correction of date
3. Correction of hour, minute, day, date and second time zone / 24-hour

Push Button B
Quick correction of second time zone / 24-hour

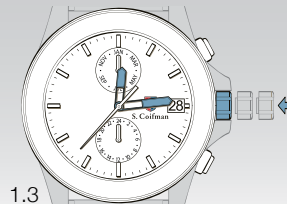
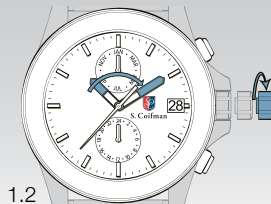
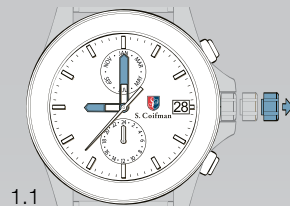
 **INFO** Battery: 371 – SR920SW

MOVEMENT CALIBER : 9232 / 1930

SETTINGS

Setting the Time and 24 Hour

- 1.1 Pull the crown to position 3.
- 1.2 Turn the crown clockwise to set the hour, minute and 24 hour hands to the desired time.
- 1.3 Push the crown back to position 1.

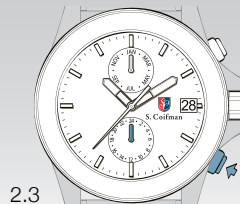
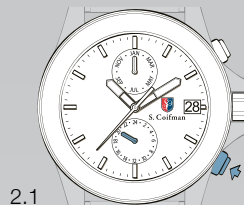


MOVEMENT CALIBER : 9232 / 1930

SETTINGS

Setting the Second Time Zone

- 2.1 Set the crown to position 1.
- 2.2 Press B step-by-step to advance the hand of the second time zone by one hour per step until the desired time is set.
- 2.3 Stop pressing the button when finished setting the time zone.

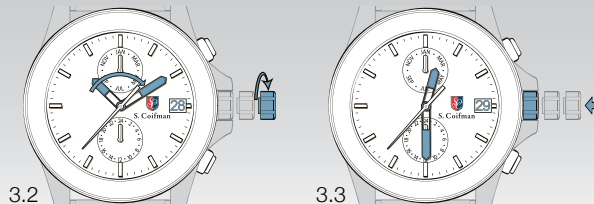
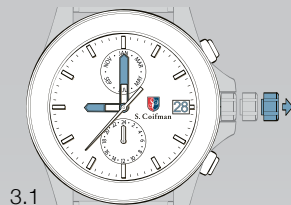


MOVEMENT CALIBER : 9232 / 1930

SETTINGS

Setting the Date

- 3.1 Pull the crown to position 3.
- 3.2 Turn the crown clockwise. The date will advance 1 day when the time reaches 00:00 midnight. Continue to turn the crown until the desired date is set.
- 3.3 Push the crown back to position 1.



MOVEMENT CALIBER : 9232 / 1930

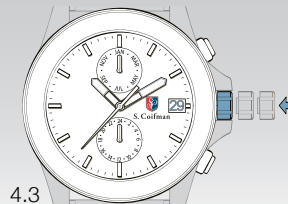
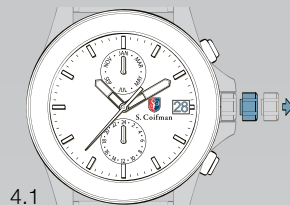
SETTINGS

Quick Correction of Date

- 4.1 Pull the crown out to position 2.
- 4.2 Turn the crown clockwise step-by-step to the desired date.
- 4.3 Push the crown back to position 1.

!! Attention !!

Please Do Not set between 21:00 and 00:30.

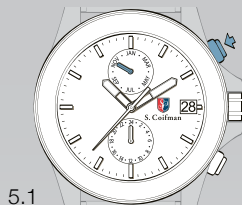


MOVEMENT CALIBER : 9232 / 1930

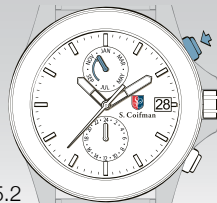
SETTINGS

Setting the Day

- 5.1 Pull the crown to position 3.
- 5.2 Turn the crown clockwise to advance the day hand until the desired day is set. The day hand will advance one day when 04:00 in the morning is reached.
- 5.3 Push the crown back to position 1.



5.1




5.2



5.3

MOVEMENT CALIBER
9232 / 1950

 **INFO** Battery: 371 – SR920SW

MOVEMENT CALIBER : 9232 / 1950

 **PRESENTATION**

Display Elements

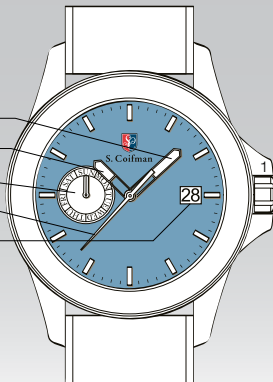
Minute Hand

Hour Hand

Day

Second Hand

Date



Control Buttons

Crown Positions:

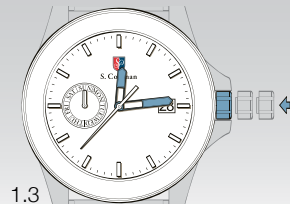
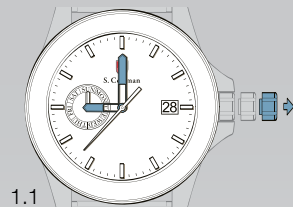
1. Normal position
2. Quick correction of date
3. Setting of hour, minute, day, date

MOVEMENT CALIBER : 9232 / 1950

SETTINGS

Setting the Time

- 1.1 Pull the crown to position 2.
- 1.2 Turn the crown clockwise to set the hour / minute hands to the desired time.
- 1.3 Push the crown back to position 1.

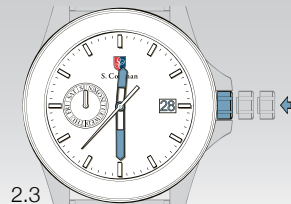
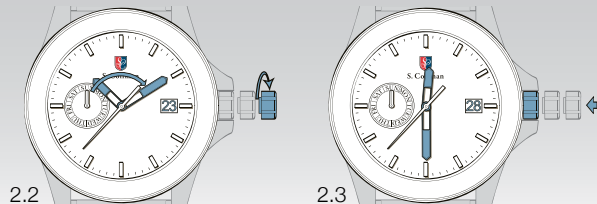
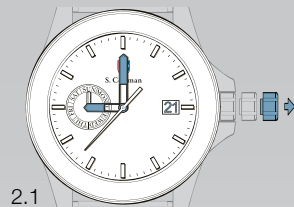


MOVEMENT CALIBER : 9232 / 1950

SETTINGS

Setting the Date

- 2.1 Pull the crown to position 2.
- 2.2 Turn the crown clockwise. Continue to turn the crown until the desired date is set.
- 2.3 Push the crown back to position 1.



MOVEMENT CALIBER : 9232 / 1950

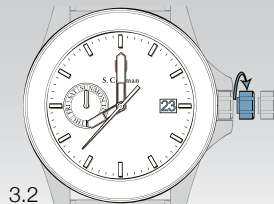
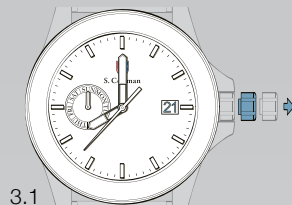
SETTINGS

Quick Correction of Date

- 3.1 Set the crown to position 2.
- 3.2 Turn the crown clockwise step-by-step to the desired date.
- 3.3 Push the crown back to position 1.

!! Attention !!

Please Do Not set between 21:00 and 00:30.

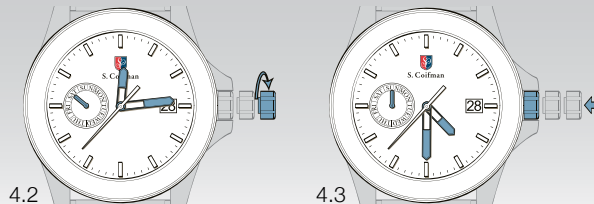


MOVEMENT CALIBER : 9232 / 1950

SETTINGS

Setting the Day

- 4.1 Pull the crown to position 2.
- 4.2 Turn the crown clockwise to advance the day hand until the desired day is set. The day hand will advance one day when 04:00 in the morning is reached.
- 4.3 Push the crown back to position 1.



MOVEMENT CALIBER
9238 / 1960

MOVEMENT CALIBER : **9238 / 1960**

 **PRESENTATION**

Display Elements

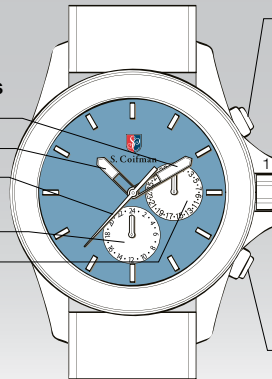
Minute Hand

Hour Hand

Second Hand

24-Hour /
Second Time Zone

Date



Control Buttons

Push Button A


Quick correction of month

Crown Positions:

1. Normal Running
2. Setting of Hour, Minute, Date, 24-Hour

Push Button B

Quick correction of second time zone / 24-hour

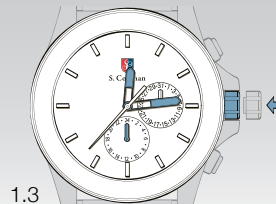
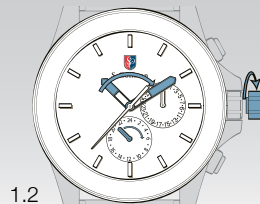
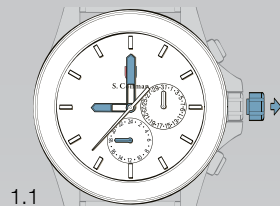
 **INFO** Battery: 371 – SR920SW

MOVEMENT CALIBER : 9238 / 1960

SETTINGS

Setting the Time and 24 Hour

- 1.1 Pull the crown to position 2.
- 1.2 Turn the crown clockwise to set the hour, minute and 24 hour hands to the desired time.
- 1.3 Push the crown back to position 1.



MOVEMENT CALIBER : 9238 / 1960

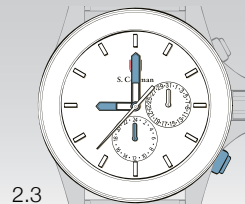
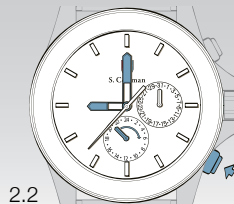
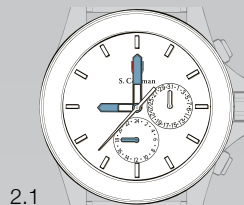
SETTINGS

Setting the Second Time Zone

- 2.1 Set the crown to position 1.
- 2.2 Press B step-by-step to advance the hour hand of the second time zone until the desired time is set.
- 2.3 Release the button once set.

!!Attention!!

When using push button B to set the second time zone hour, the center minute hand must be set to between 55th minute and 05th minute at any hour.

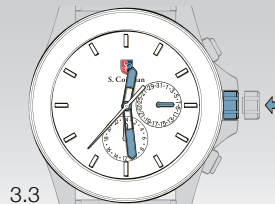
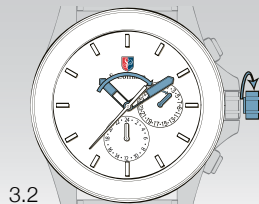
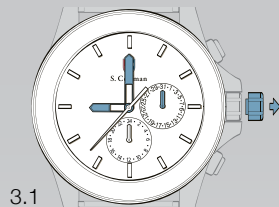


MOVEMENT CALIBER : 9238 / 1960

SETTINGS

Quick Correction of Date

- 3.1 Pull the crown to position 2.
- 3.2 Turn the crown clockwise. Continue to turn the crown until the desired date is set.
- 3.3 Push the crown back to position 1.



MOVEMENT CALIBER : 9238 / 1960

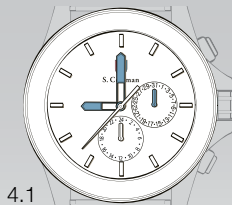
SETTINGS

Quick Correction of Date

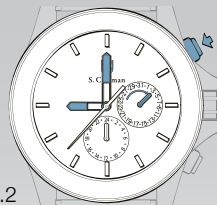
- 3.1 Set the crown to position 1.
- 3.2 Press A step-by-step to advance the date until the desired date is set.

!!Attention!!

The date advances at 00:00 midnight, not 12:00 noon.




4.1



4.2

MOVEMENT CALIBER
9238 / 1970

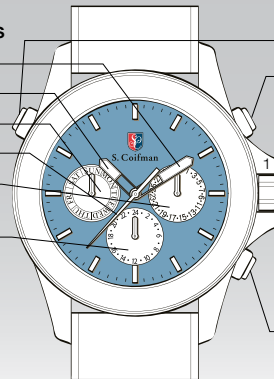
 **INFO** Battery: 371 – SR920SW

MOVEMENT CALIBER : **9238 / 1970**

 **PRESENTATION**

Display Elements

Minute Hand
Hour Hand
Day
Second Hand
Date
24-hour / second
time zone



Control Buttons

Push Button C (Option)

Quick correction of day

Push Button A

Quick correction of date

Crown Positions:

1. Normal Running
2. Setting of Hour, Minute, Date, 24-Hour

Push Button B

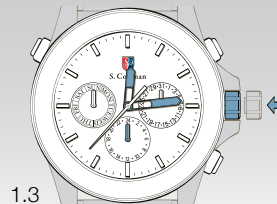
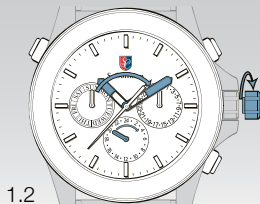
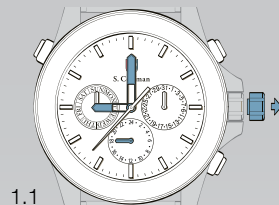
Quick correction of 24-hour, second time zone

MOVEMENT CALIBER : 9238 / 1970

SETTINGS

Setting the Time and 24 Hour

- 1.1 Pull the crown to position 2.
- 1.2 Turn the crown clockwise to set the hour, minute and 24 hour hands to the desired time.
- 1.3 Push the crown back to position 1.



MOVEMENT CALIBER : 9238 / 1970

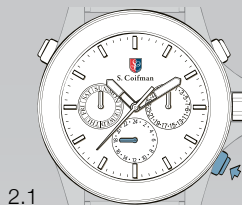
SETTINGS

Setting the Second Time Zone

- 2.1 Set the crown to position 1.
- 2.2 Press B step-by-step to advance the hand of the second time zone by one hour per step until the desired time is set.
- 2.3 Release the button after completing the setting.

!! Attention !!

When using push button B to set the second time zone hour, the center minute hand must be set to between 55th minute and 05th minute at any hour.

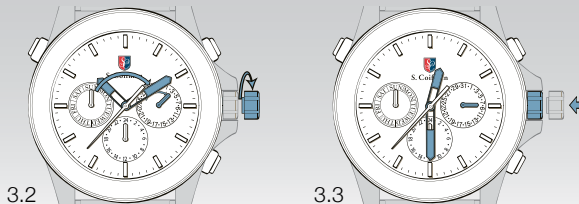
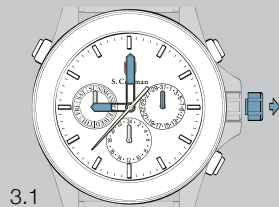


MOVEMENT CALIBER : 9238 / 1970

SETTINGS

Setting the Date

- 3.1 Pull the crown to position 2.
- 3.2 Turn the crown clockwise. Continue to turn the crown until the desired date is set.
- 3.3 Push the crown back to position 1.



MOVEMENT CALIBER : 9238 / 1970

SETTINGS

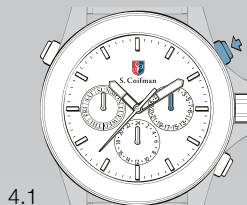
Quick Correction of Date

4.1 Set the crown to position 1.

4.2 Press A step-by-step to advance the date until the desired date set.

!! Attention !!

The date advances at 00:00 midnight, not 12:00 noon.

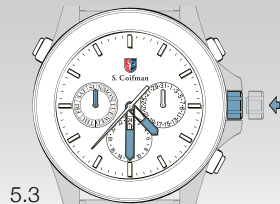
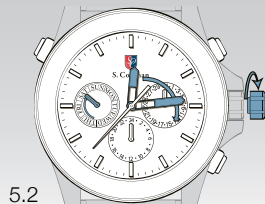
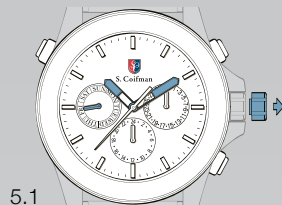


MOVEMENT CALIBER : 9238 / 1970

SETTINGS

Setting the Day

- 5.1 Pull the crown to position 2.
- 5.2 Turn the crown clockwise to advance the day hand until the desired day is set. The day hand will advance one day when 04:00 in the morning is reached.
- 5.3 Push the crown back to position 0.



MOVEMENT CALIBER : 9238 / 1970

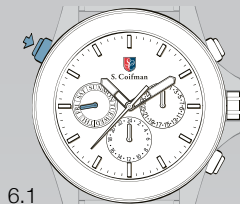
SETTINGS

Quick Correction of Day

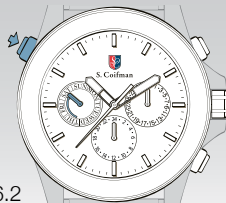
- 6.1 Set the crown to position 1.
- 6.2 Press A step-by-step to adjust the month to the desired one.
- 6.3 Press C twice to advance the day hand by one step until the desired day is set.

!! Attention !!

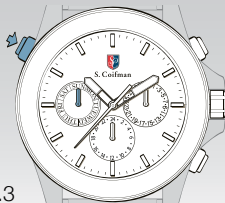
Do not use Quick Correction to set the Day between 22:00 at night and 6:00 in the morning.



6.1



6.2



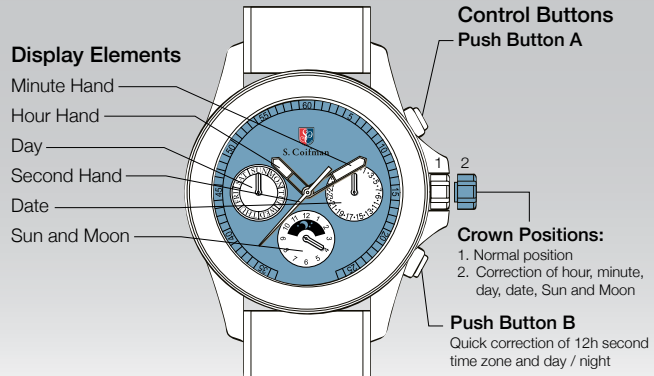
6.3

MOVEMENT CALIBER
9239 / 0005

 **INFO** Battery: 371 – SR920SW Service Life Battery: 40 months 0312204 IM - A

MOVEMENT CALIBER : 9239 / 0005

 **PRESENTATION**

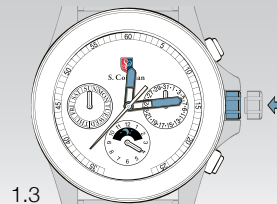
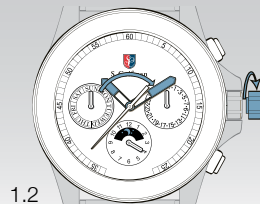
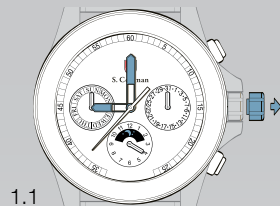


MOVEMENT CALIBER : 9239 / 0005

SETTINGS

Setting the Time

- 1.1 Pull the crown to position 2.
- 1.2 Turn the crown clockwise to set the hour / minute hands to the desired time.
- 1.3 Push the crown back to position 1.

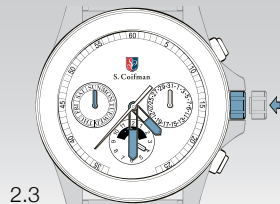
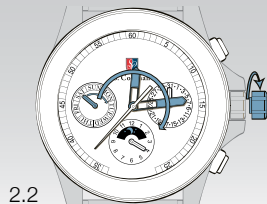
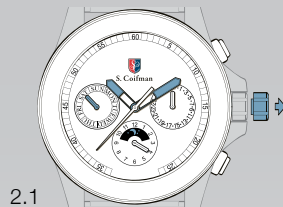


MOVEMENT CALIBER : 9239 / 0005

SETTINGS

Setting the Day

- 2.1 Pull the crown to position 2.
- 2.2 Turn the crown clockwise to advance the day hand until the desired day is set. The day hand will advance one day when 04:00 in the morning is reached.
- 2.3 Push the crown back to position 1.



MOVEMENT CALIBER : 9239 / 0005

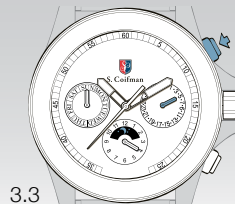
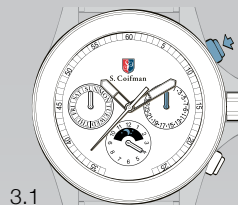
SETTINGS

Quick Correction of Date

- 3.1 Set the crown to position 1.
- 3.2 Press A step-by-step to advance the date until the desired date is set.

!! Attention !!

The date advances at 00:00 midnight, not 12:00 noon.

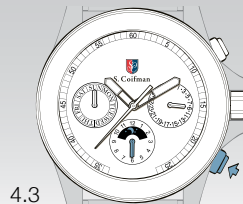
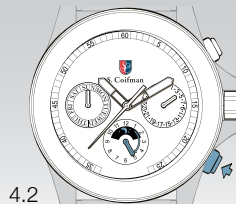
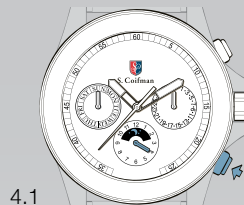


MOVEMENT CALIBER : 9239 / 0005

SETTINGS

Setting the Second Time Zone

- 4.1 Set the crown to position 1.
- 4.2 Press B step-by-step to advance the hand of the second time zone by one hour per step until the desired time is set.
- 4.3 Release the button after completing the setting.



MOVEMENT CALIBER
ETA G 15.261

MOVEMENT CALIBER : **ETA G 15.261**

 **PRESENTATION**

Display Elements

5 Minute Counter

Minute Hand

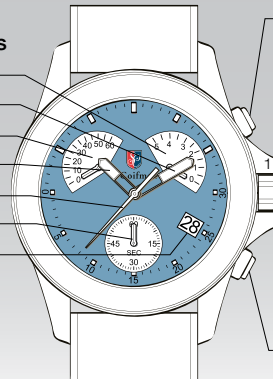
60 Minute Counter

Hour Hand

30 Second Counter

Second Hand

Date Indicator



Control Buttons

Push Button A

Start / Stop



Crown Positions:

1. Normal position
2. Quick correction of date
3. Correction of hour, minute, and date

Push Button B

Split / Reset

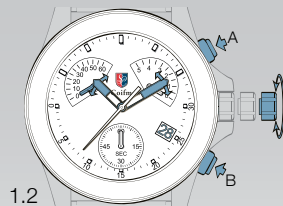
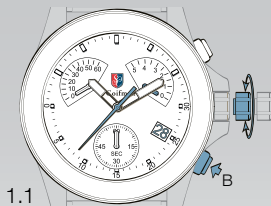
MOVEMENT CALIBER : ETA G15.261

SETTINGS

Setting the Counters to Zero

Setting crown in position 2 or 3

- 1.1 B. Set the hand of the 60 minute counter to zero
- 1.2 A. Set the hand of the 30 second counter to zero
B. Set the hand of the 5 minute counter to zero



MOVEMENT CALIBER : ETA G15.261

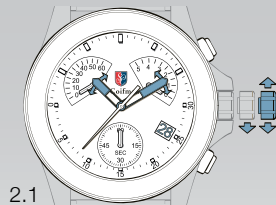
SETTINGS

Crown 3 Positions

1. Normal running of watch
2. Rapid correction of the date
3. Position for setting the time with stop second and correction of the date at every passing or midnight.

Please note:

Setting crown in position 3 : STOP-SECOND



MOVEMENT CALIBER : ETA G15.261

FUNCTIONS

Simple Timing Function

Chronograph stops after 2 hours.

❶ to ❸ order of functions

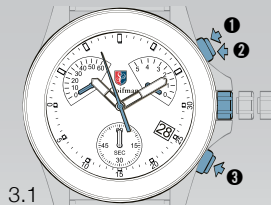
❶ START

❷ STOP STOP: Read time
- 5 minutes, 57 seconds

❸ Reset to zero

WARNING

Before starting the time, put the chronograph hands back to their original position. If necessary, see paragraph "Setting The Timers To Zero".



MOVEMENT CALIBER : ETA G15.261

FUNCTIONS

ADD Function

Setting crown in position 1

① to ✕ order of functions

① START

② STOP Read

③ RESTART

④ STOP Read

⑤ RESTART

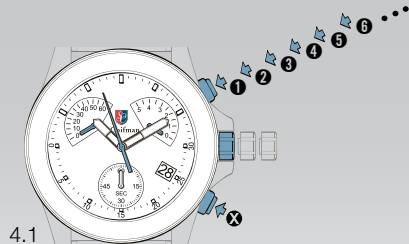
⑥ STOP Read

•

•

•

✕ Reset to zero



MOVEMENT CALIBER : ETA G15.261

FUNCTIONS

SPLIT-TIME or INTERMEDIATE TIMES Function

Setting crown in position 0

❶ to ❷ order of functions

❶ START

❷ SPLIT 1: Read time 1
- 6 minutes, 4 seconds

❸ RESTART (catching-up)

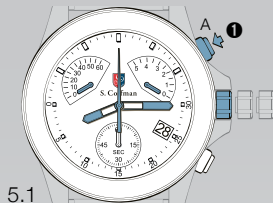
❹ SPLIT 2: Read time 2
- 15 minutes, 36 seconds

❺ RESTART (catching-up)

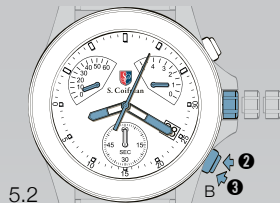
❻ STOP: Read FINAL TIME
- 25 minutes, 18 seconds

❼ Reset to zero

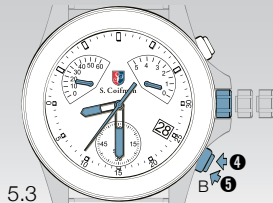
212



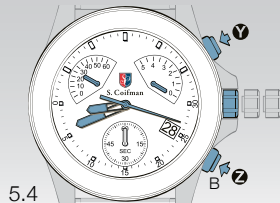
5.1



5.2



5.3



5.4

213

MOVEMENT CALIBER : 8171 / 201

 **PRESENTATION**

MOVEMENT CALIBER
8171 / 201

Display Elements

Second Hand

Minute Hand

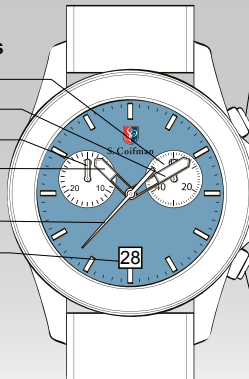
30 Minute Totalizer

Hour Hand

Chronographe Hand

1/5 Second

Date Window



Control Buttons

Push Button A

Start / Stop



Crown Positions:

1. Normal position
2. Quick correction of date
3. Correction of hour, minute, day, date and second time zone / 24-hour

Push Button B

Split / Reset



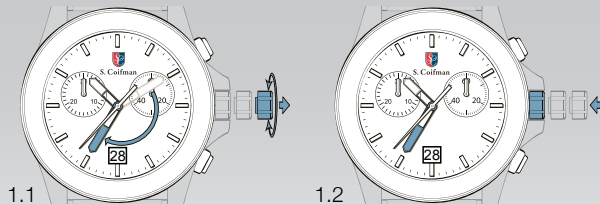
INFO

Battery: 395-SR 927W Service Life Battery: Without chrono = 57 months, with chrono 1H/D = 41 months 031213 1 IM - B

MOVEMENT CALIBER : 8171 / 201

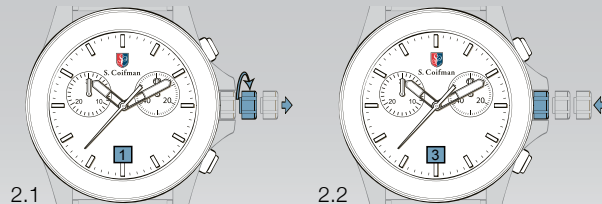
SETTINGS

Setting the Time



Setting the Date

Caution: Never correct date between 9pm and 0:30am.

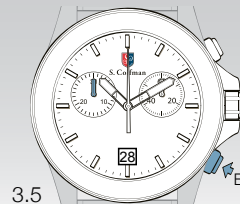
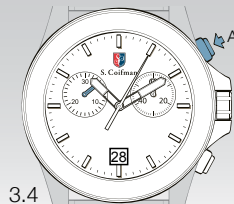
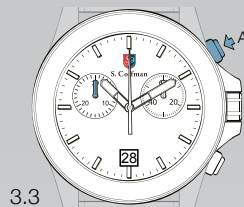


MOVEMENT CALIBER : 8171 / 201

SETTINGS

Measuring Cumulative Times

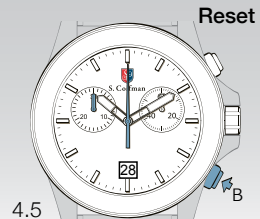
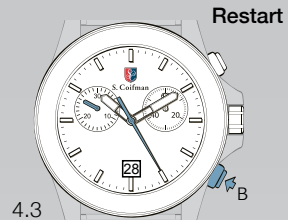
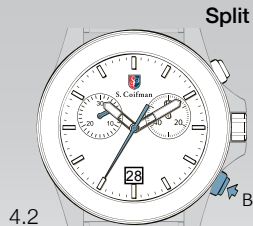
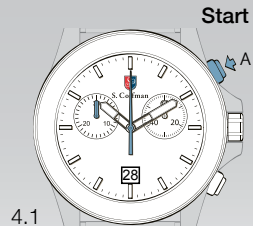
After 2 hours of continuous running, the chrono stop and resets automatically to save the battery.



MOVEMENT CALIBER : 8171 / 201

FUNCTIONS

Measuring Split Times

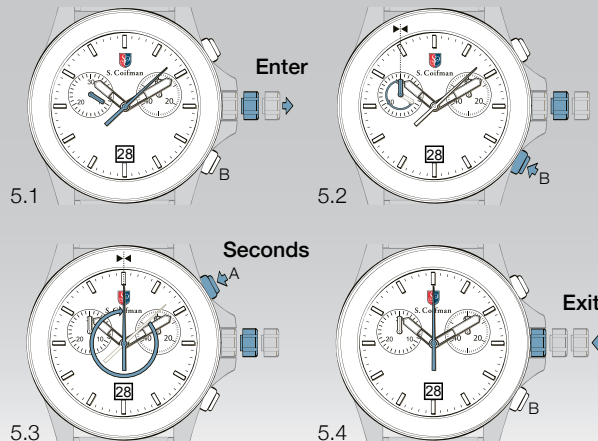


MOVEMENT CALIBER : 8171 / 201

FUNCTIONS

After Battery Exchange or Mishandling Only

To reset chronograph, minute and second chronograph



MOVEMENT CALIBER : 9230 / 0005

 **PRESENTATION**

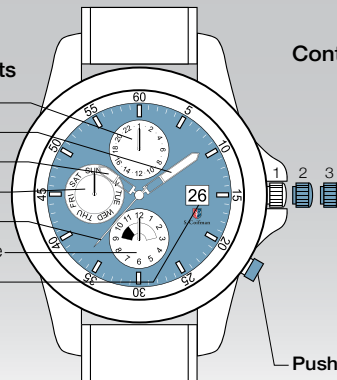
MOVEMENT CALIBER
9230 / 0005


Display Elements

- 24 Hour
- Minute Hand
- Hour Hand
- Day
- Second Hand
- 12 Hour Time Zone
- Date

Control Buttons

Push Button B

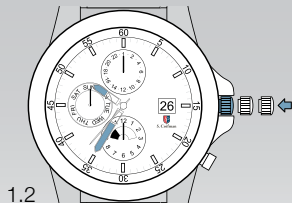
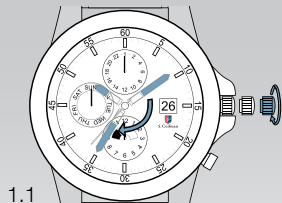


 **INFO** Battery: 371-SR 920 SW Service Life Battery: 40 months

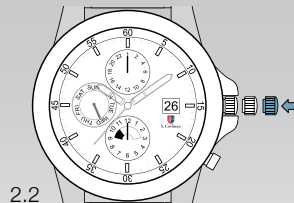
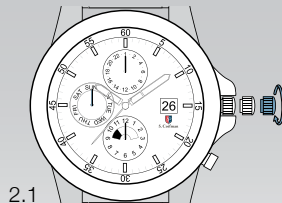
MOVEMENT CALIBER : 9230 / 0005

SETTINGS

Setting the Time



Setting the Day

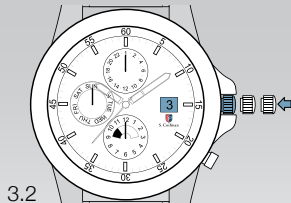
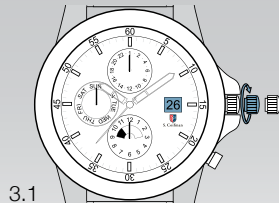


MOVEMENT CALIBER : 9230 / 0005

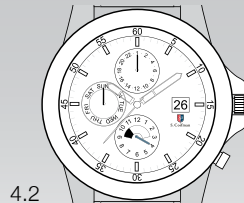
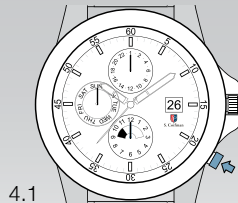
SETTINGS

Quick Date Correction

Caution : Never correct date between 9pm and 0:30am.



Setting the Second Time Zone and Day and Night



MOVEMENT CALIBER
SW200

MOVEMENT CALIBER : SW200

 **PRESENTATION**

Display Elements

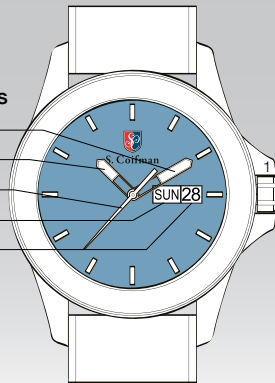
Minute Hand

Hour Hand

Second Hand

Day

Date



Control Buttons

Crown Positions:

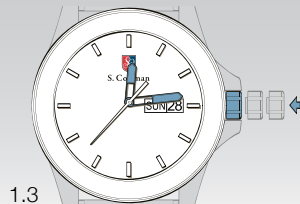
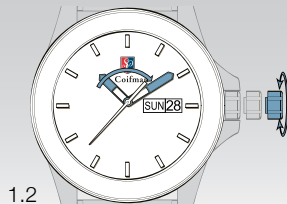
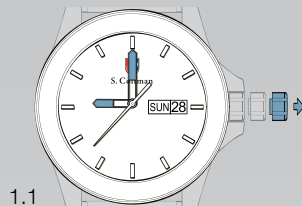
1. Normal position
2. Setting the date
3. Setting of hour, minute, day

MOVEMENT CALIBER : SW200

SETTINGS

Setting the Time

- 1.1 Pull out the crown to the second position.
- 1.2 Turn the crown to set hour and minute hands.
(Check that AM/PM is set correctly.)
- 1.3 Push the crown back in to the position 1.



MOVEMENT CALIBER : SW200

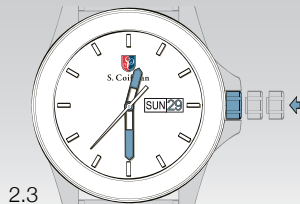
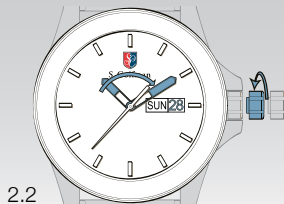
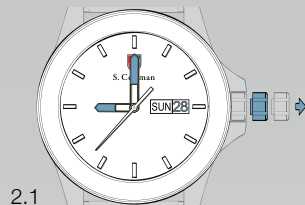
SETTINGS

Setting the Day

- 2.1 Pull out the crown to the position 2.
- 2.2 Turn the crown to right for day setting.
- 2.3 Push the crown back in to the position 1.

Please note

Do not set the calendar between 9:00P.M. and 4:00A.M. If the setting of the calendar is made during this period, the day will not change to the next day. Please set the calendar after changing the time other than the above period.



MOVEMENT CALIBER : SW200

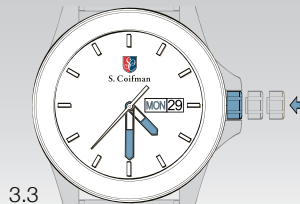
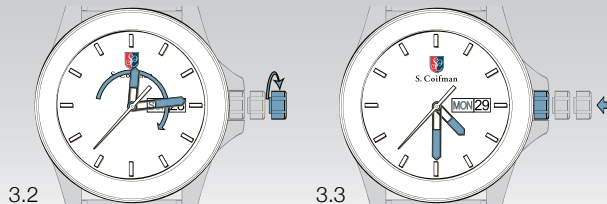
SETTINGS

Setting the Date

- 3.1 Pull out the crown to the position 2.
- 3.2 Turn the crown to left for date setting.
- 3.3 Push the crown back in to the position 1.

Please note

Do not set the calendar between 9:00P.M. and 4:00A.M. If the setting of the calendar is made during this period, the date will not change to the next date. Please set the calendar after changing the time other than the above period.



MOVEMENT CALIBER : **SW200**

SETTINGS

To Start the Watch

4.1 Swing the watch side to side for 30 or more seconds.

MOVEMENT CALIBER
638 / 101

MOVEMENT CALIBER : 638 / 101

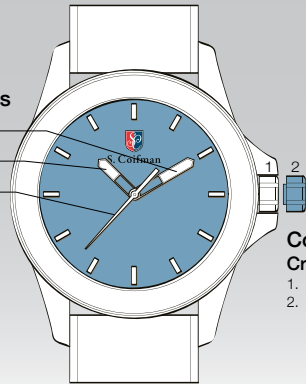
 **PRESENTATION**

Display Elements

Minute Hand

Hour Hand

Second Hand



Control Buttons
Crown Positions:

1. Normal position
2. Setting the Time

SETTINGS

Setting the Time

- 1.1 To set the time, gently pull out the crown to the first click stop position and rotate to the time of day.
- 1.2 After setting the time, push the crown back to its normal operating position. The watch will begin running again.

