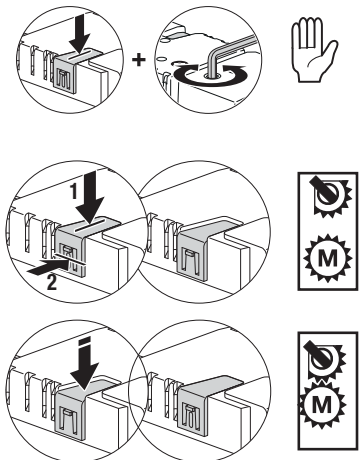
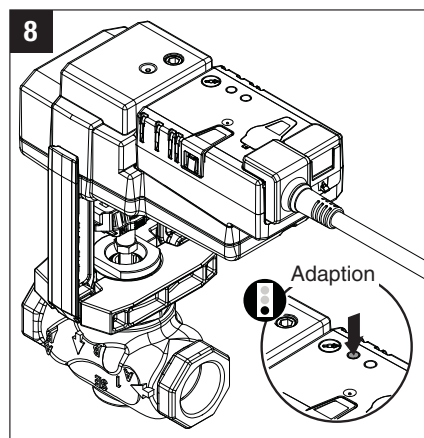
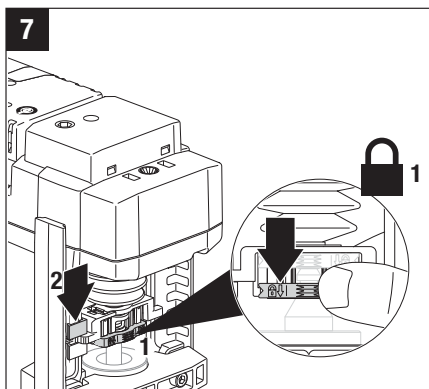
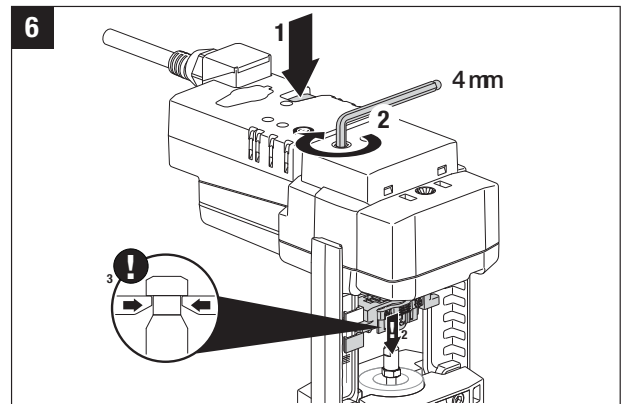
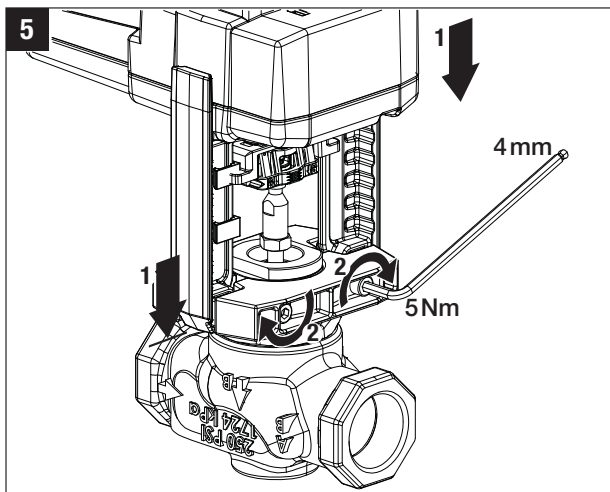
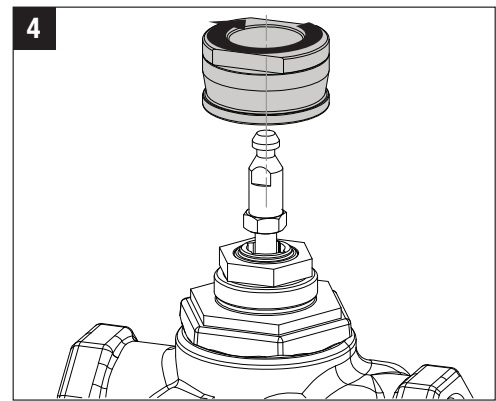
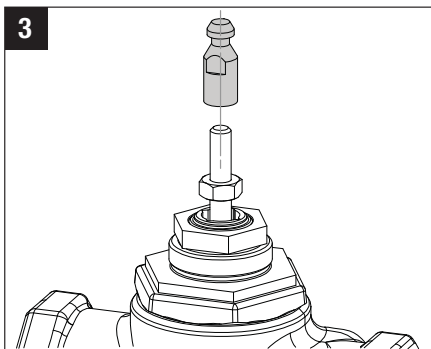
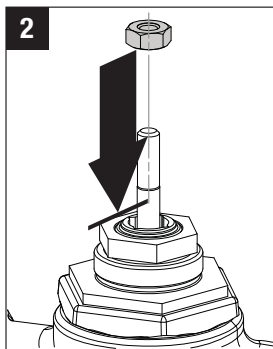
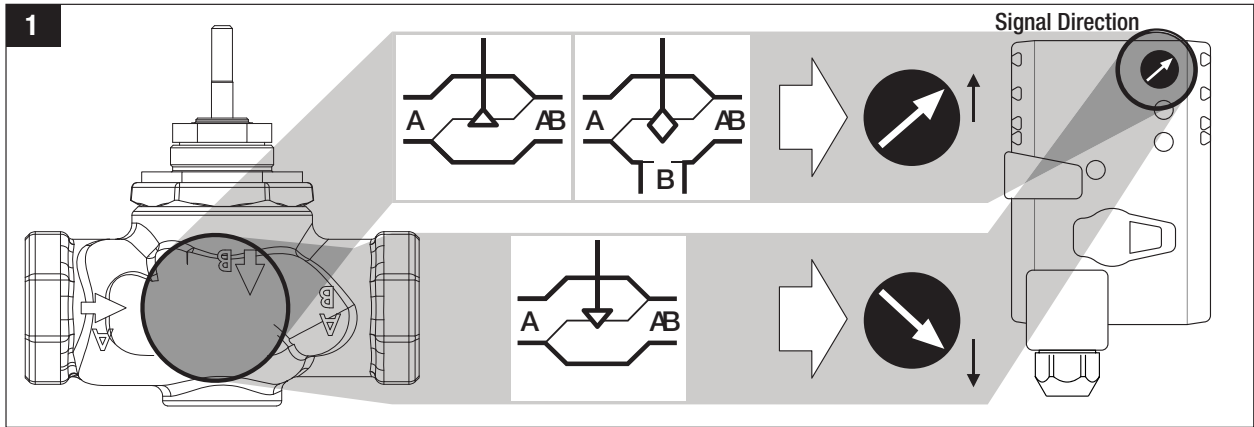
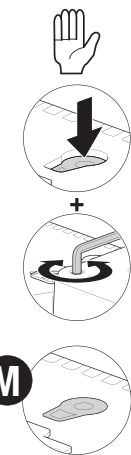
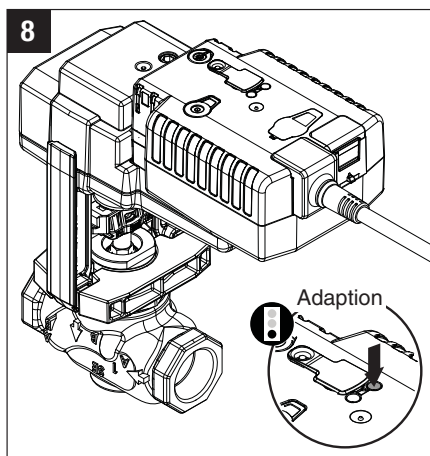
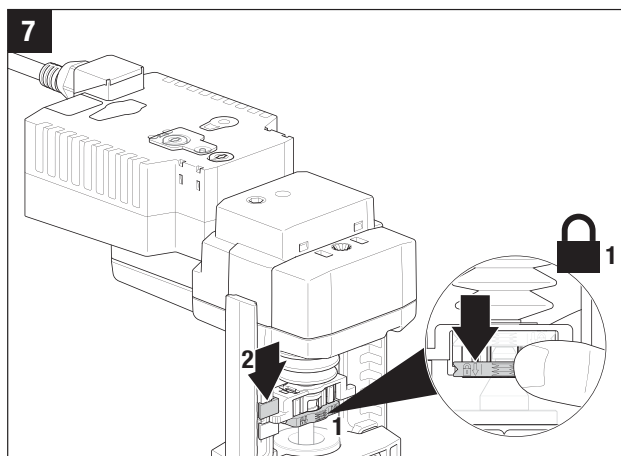
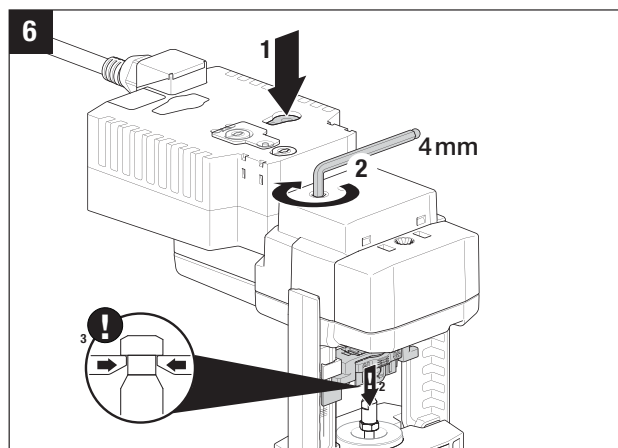
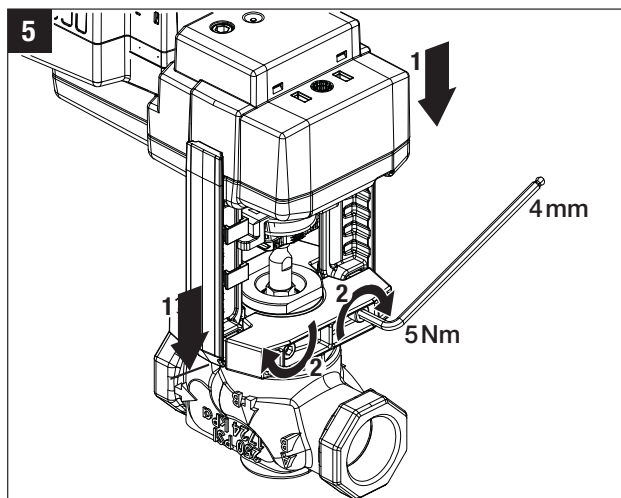
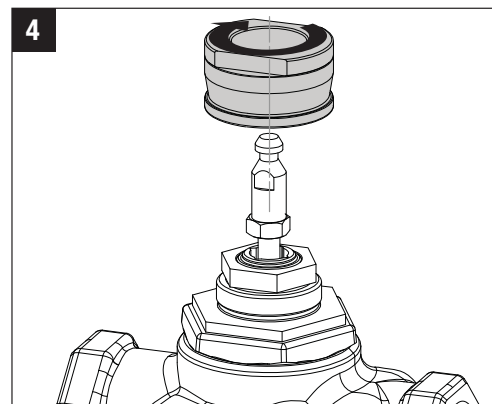
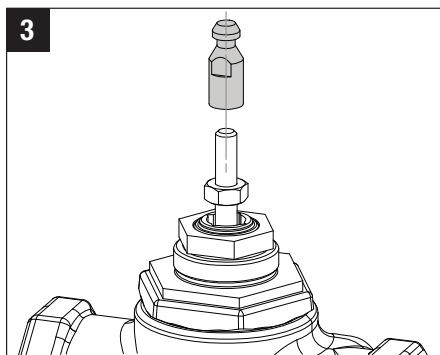
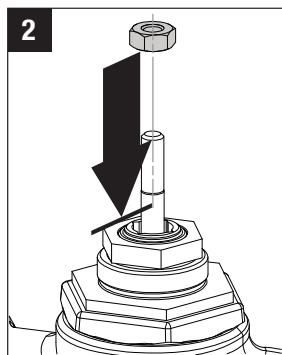
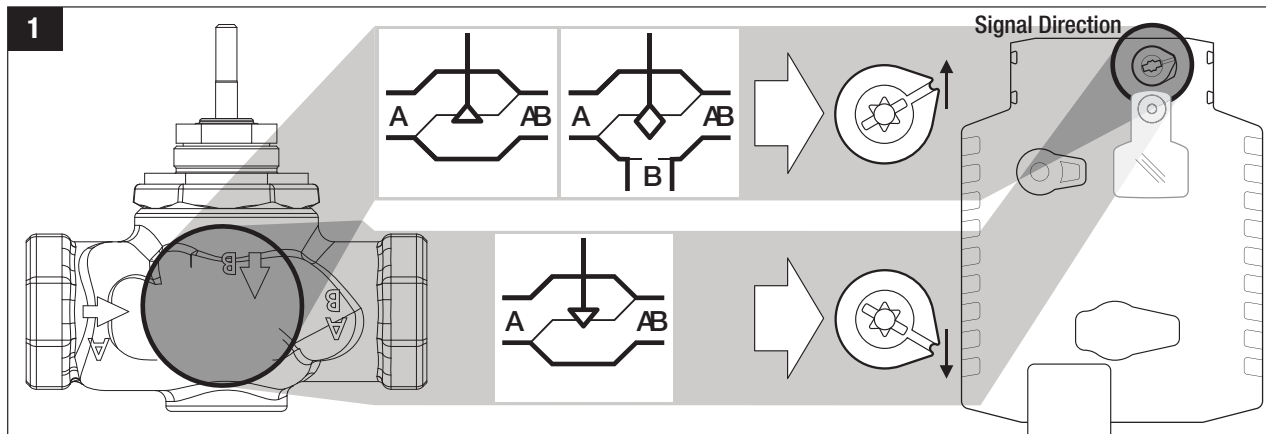


SGVL/G2/G3 with LV and SV Series Actuators

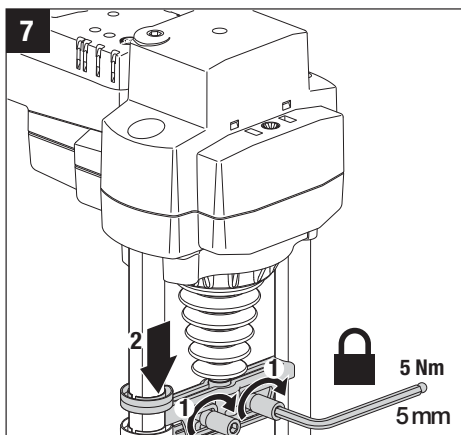
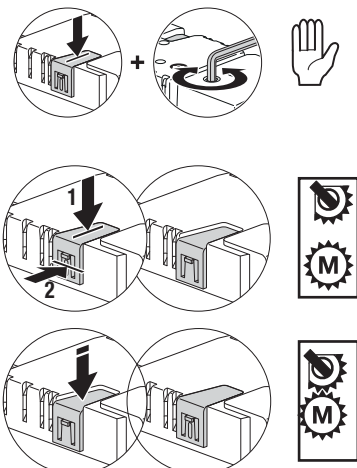
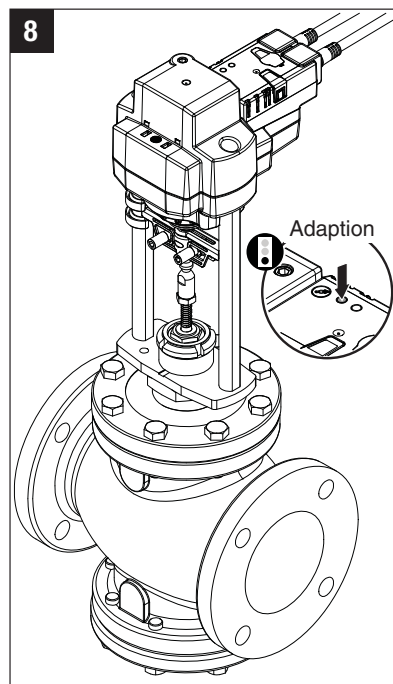
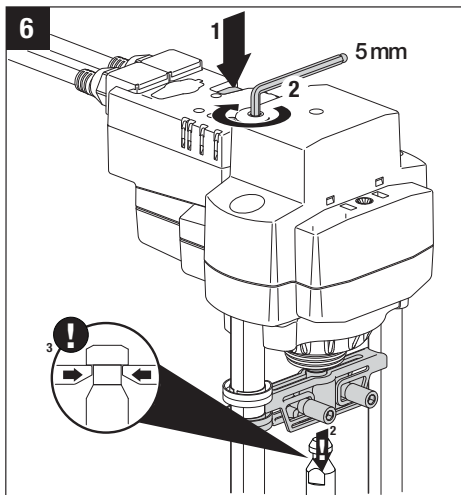
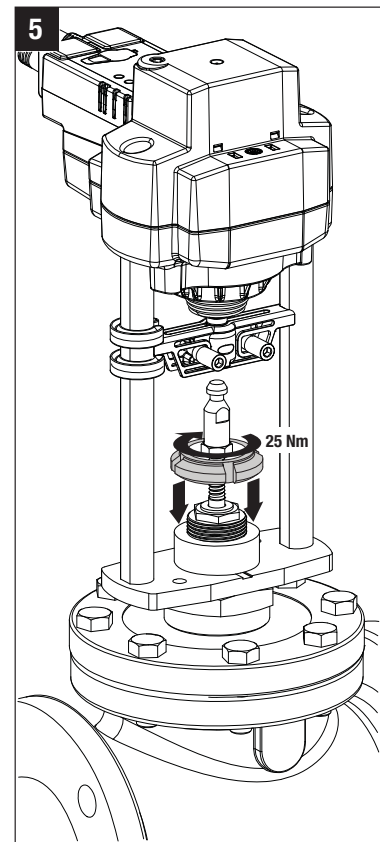
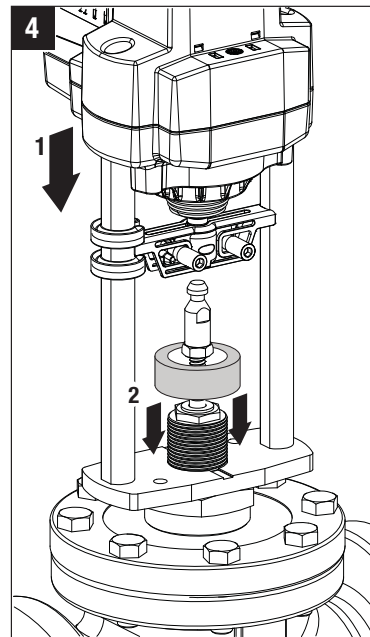
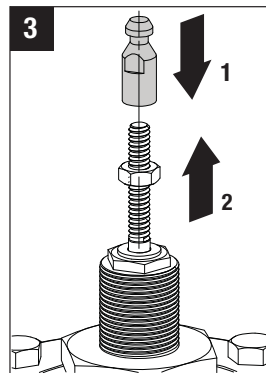
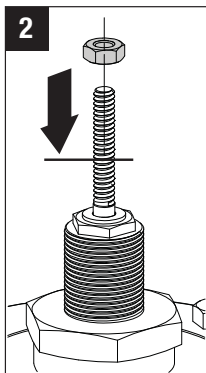
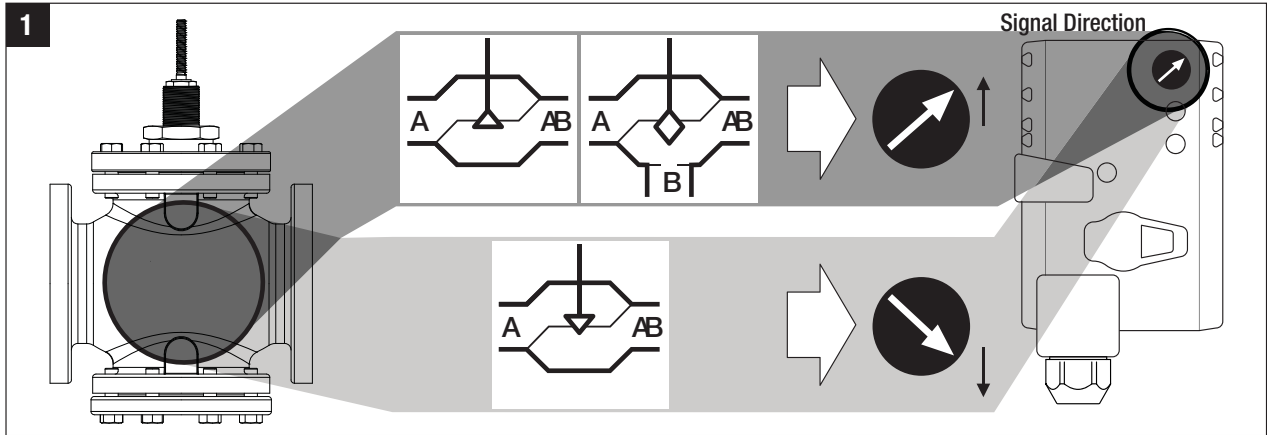


SGVL/G2/G3 with LVK and SVK Series Actuators



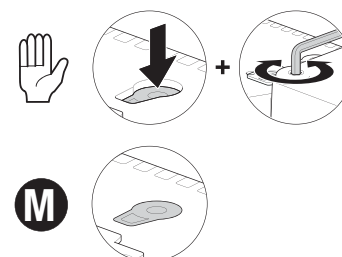
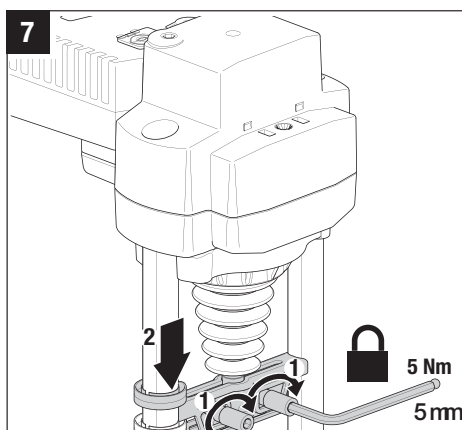
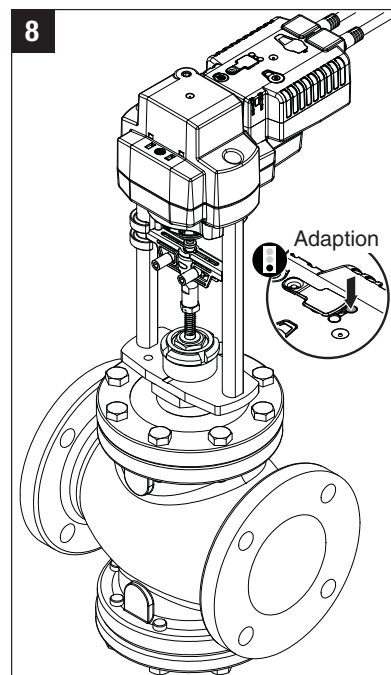
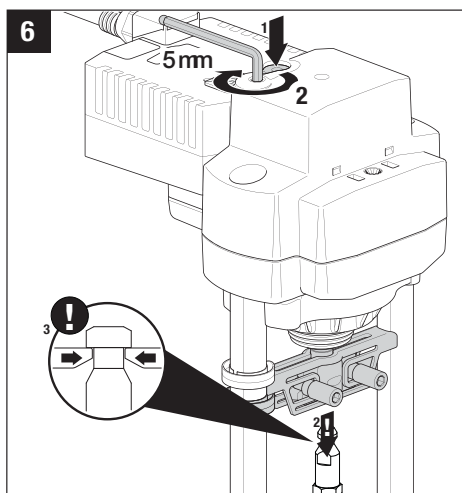
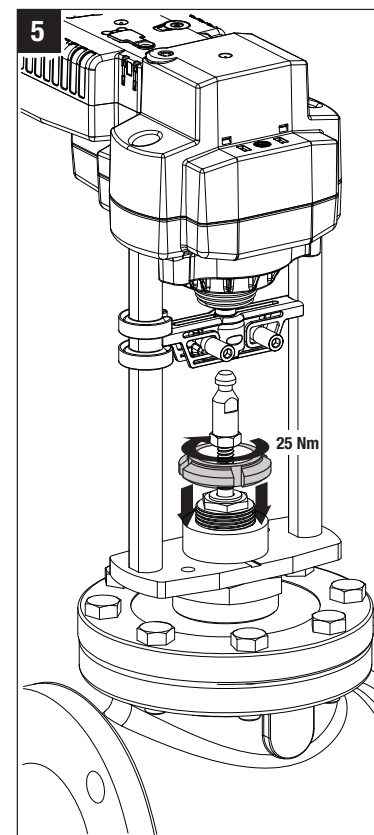
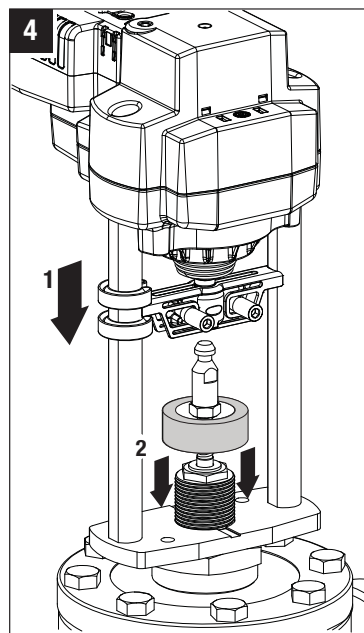
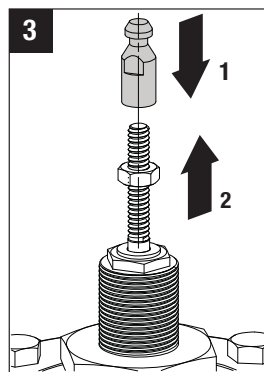
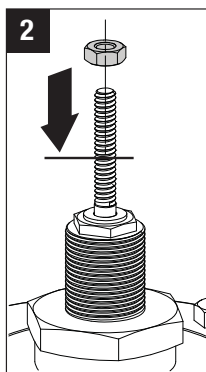
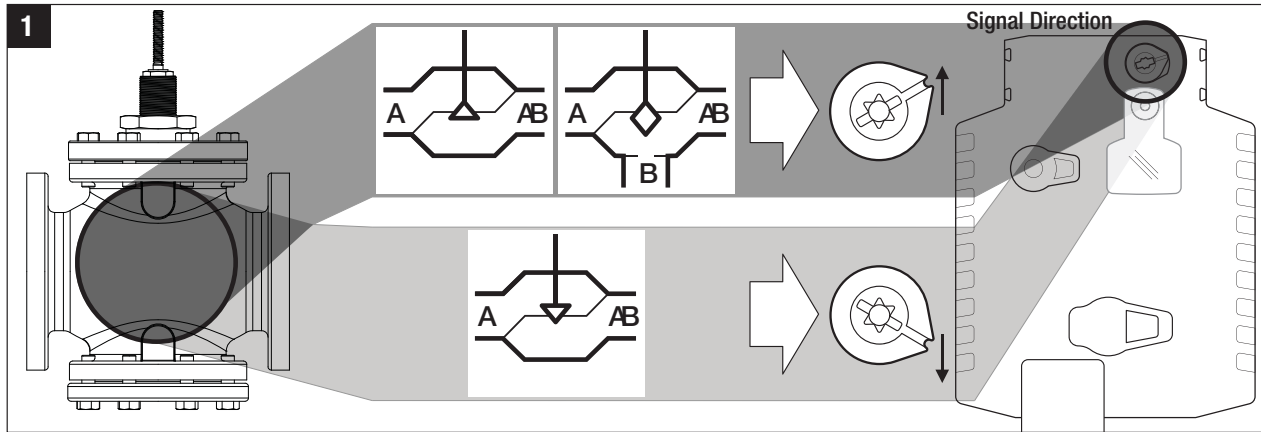
SUBJECT TO CHANGE. © BELIMO AIRCONTROLS (USA), INC.

WGVL/G6/G7 with EV and RV Series Actuators



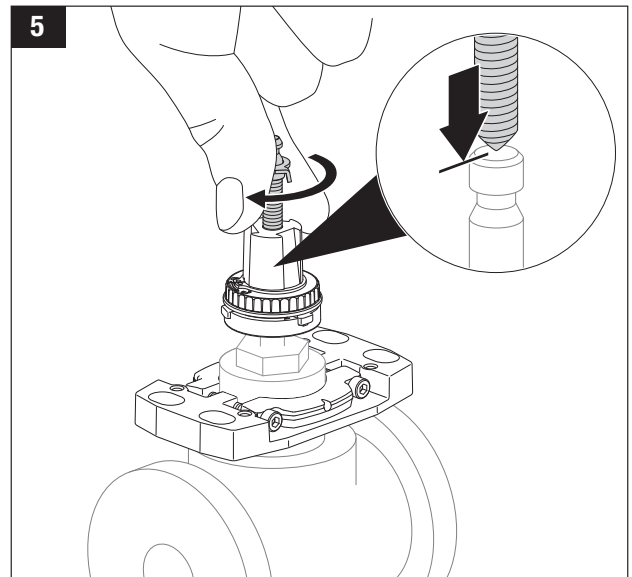
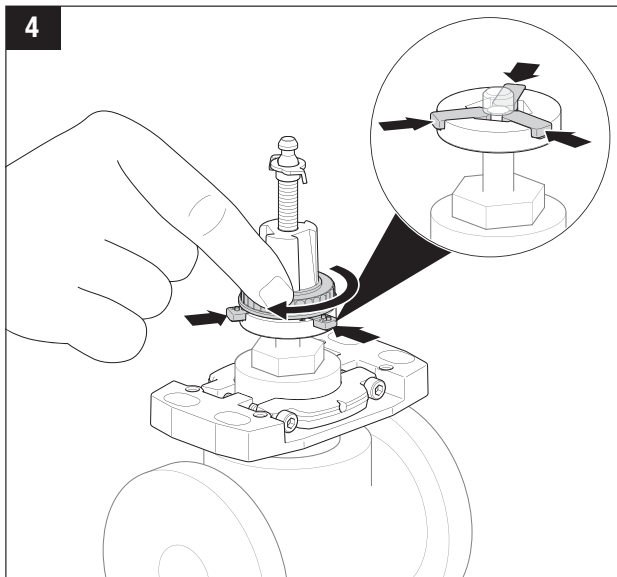
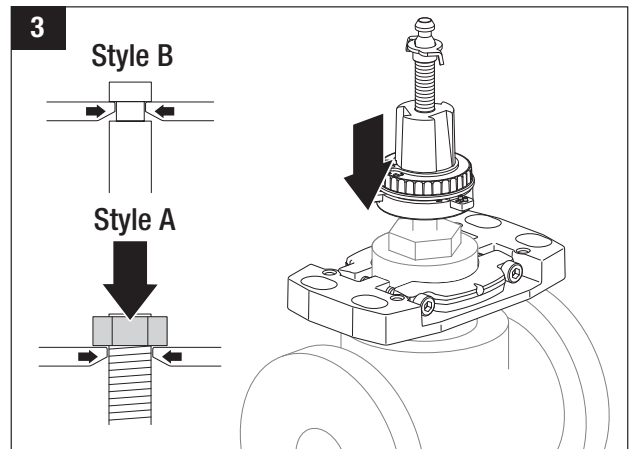
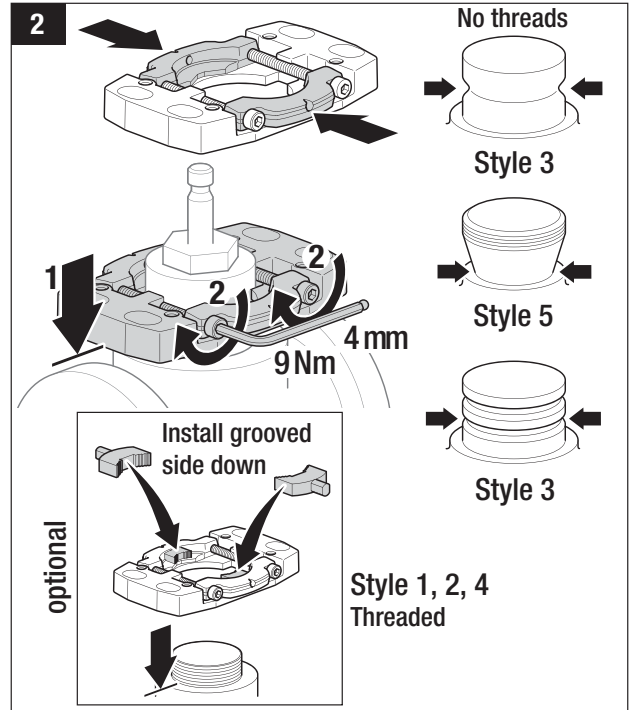
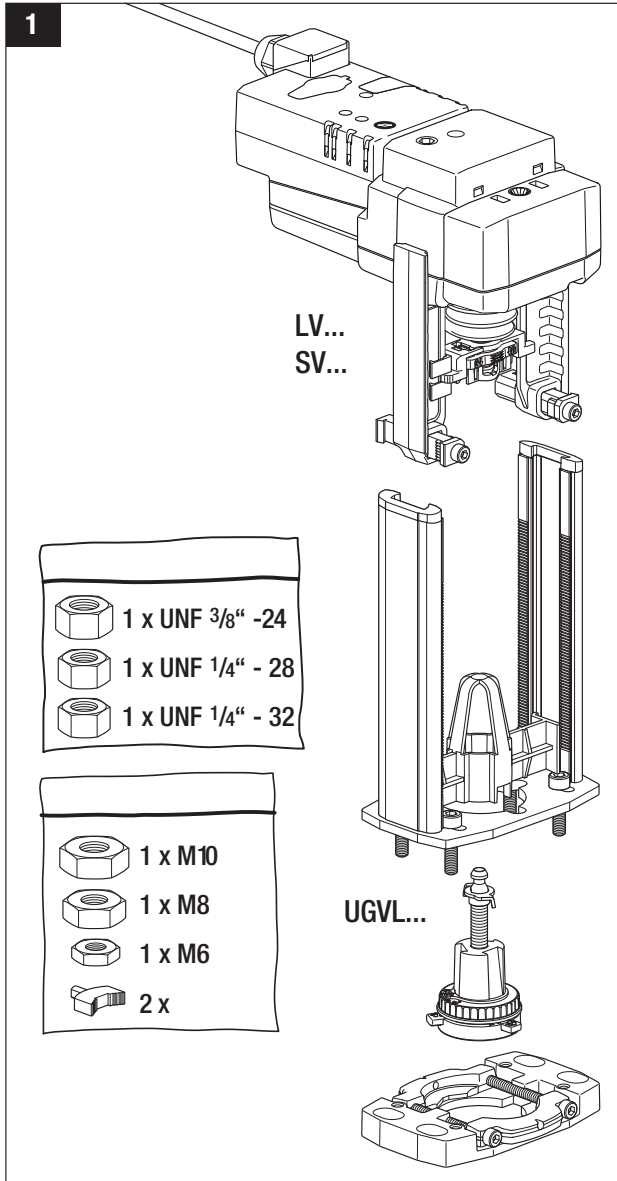
SUBJECT TO CHANGE. © BELIMO AIRCONTROLS (USA), INC.

WGVL/G6/G7 with AVK Series Actuators



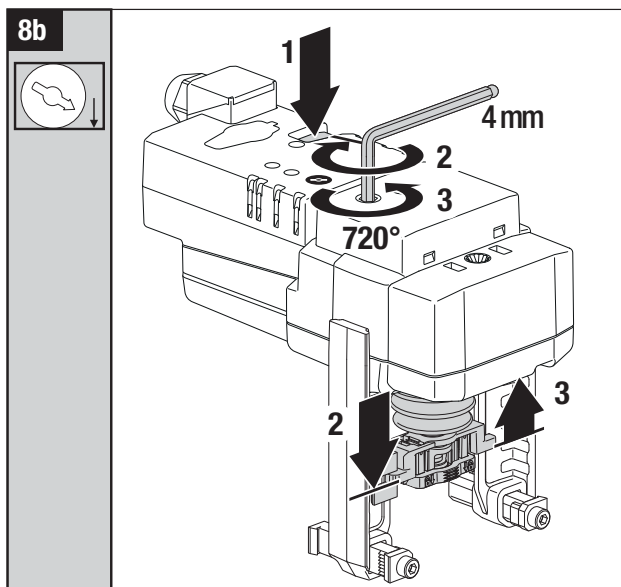
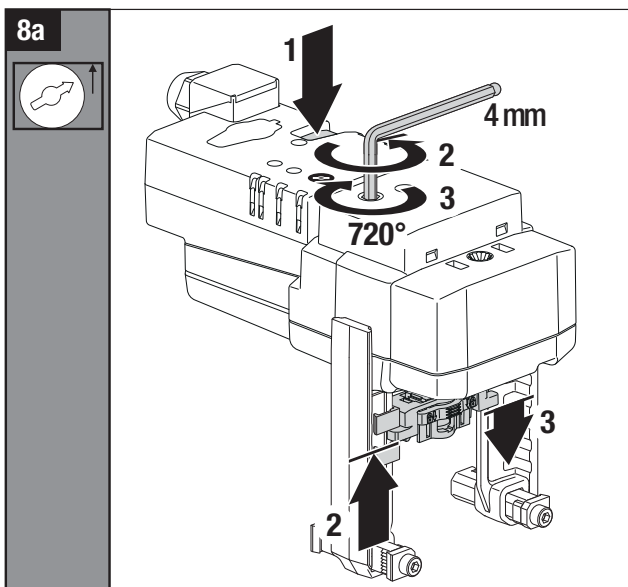
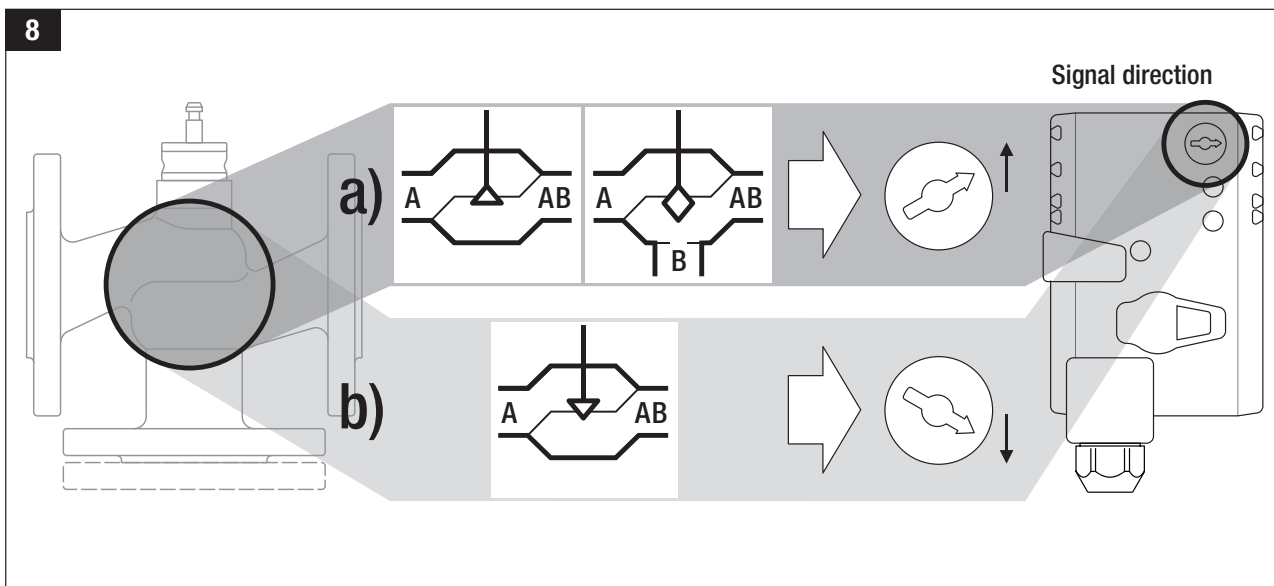
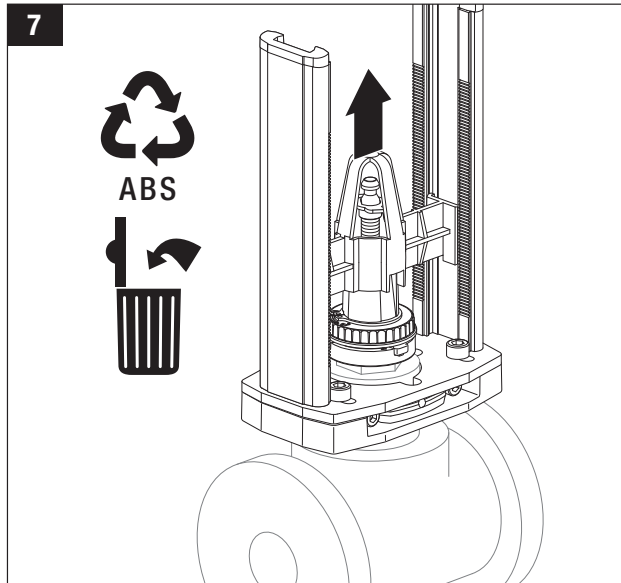
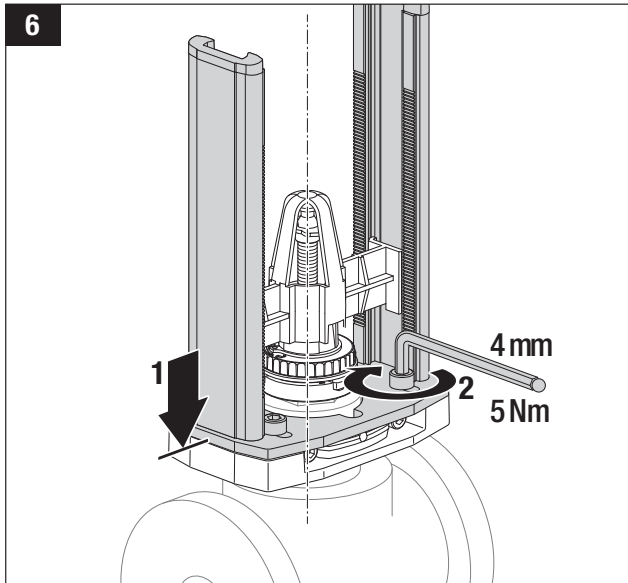
SUBJECT TO CHANGE. © BELIMO AIRCONTROLS (USA), INC.

UGVL Linkage with LV and SV Series Actuators

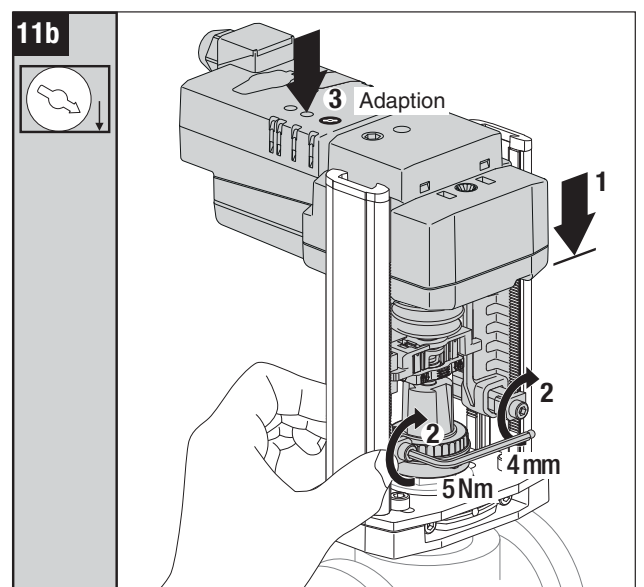
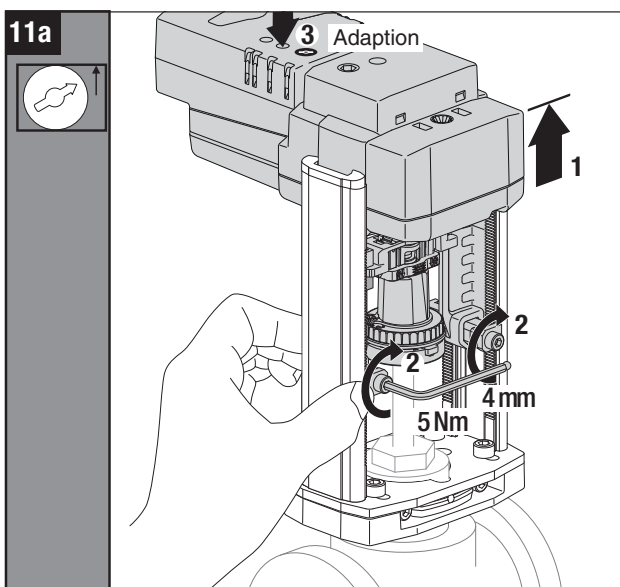
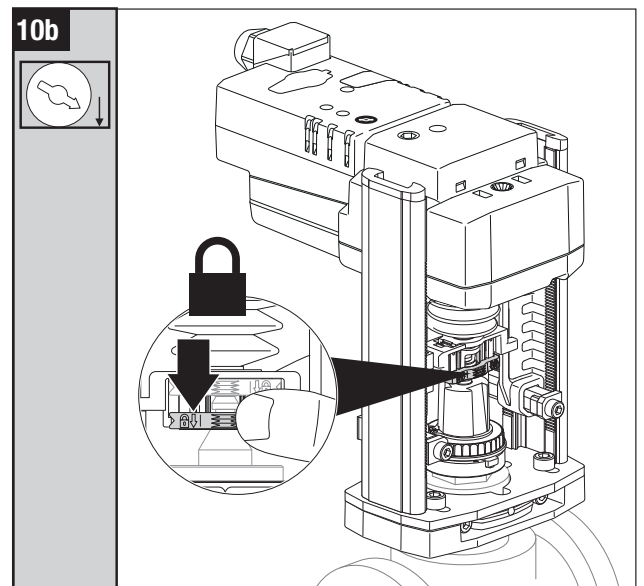
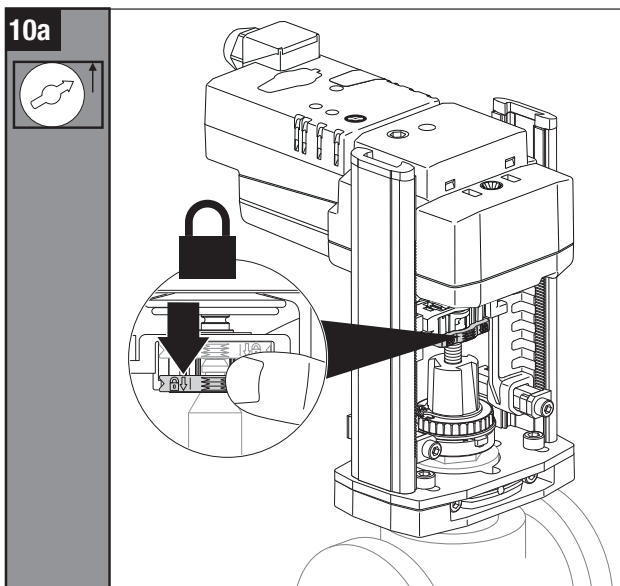
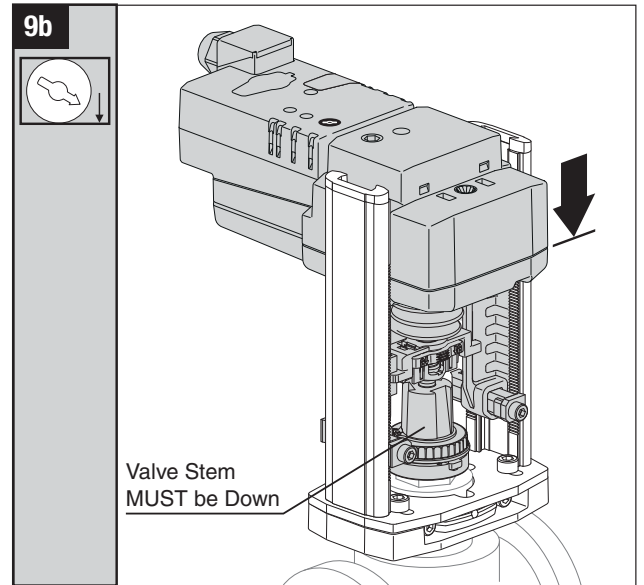
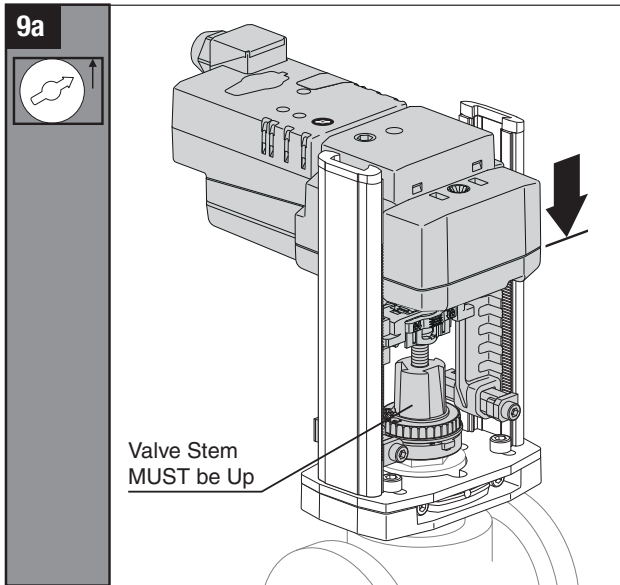


SUBJECT TO CHANGE. © BELIMO AIRCONTROLS (USA), INC.

UGVL Linkage with LV and SV Series Actuators



UGVL Linkage with LV and SV Series Actuators



SUBJECT TO CHANGE. © BELIMO AIRCONTROLS (USA), INC.

UGVL Linkage with LVK and SVK Series Actuators

1

LVK...
SVK...

UGVL...

- 1 x UNF 3/8" -24
- 1 x UNF 1/4" - 28
- 1 x UNF 1/4" - 32
- 1 x M10
- 1 x M8
- 1 x M6
- 2 x

2

No threads

Style 3

Style 5

Style 3

optional

Install grooved side down

Style 1, 2, 4 Threaded

9Nm

4 mm

3

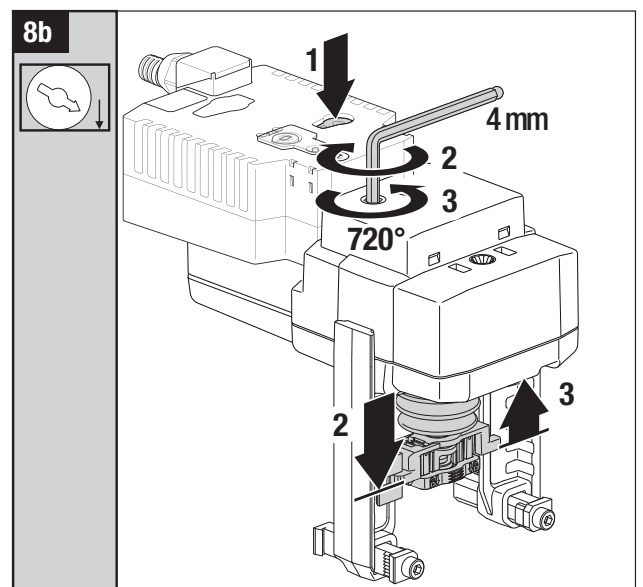
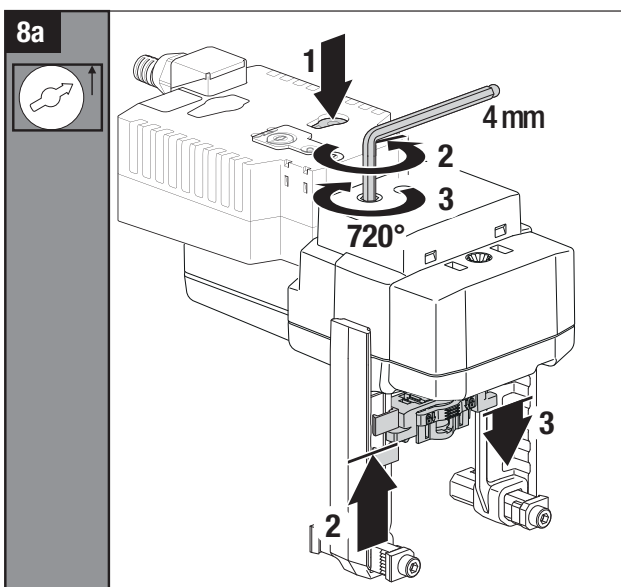
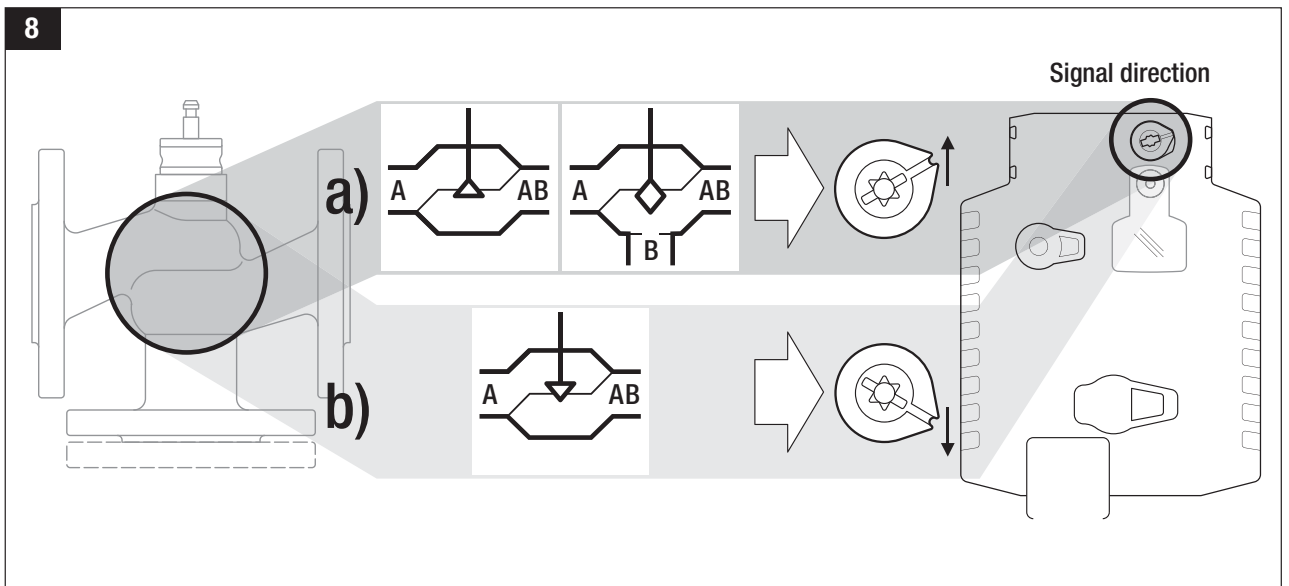
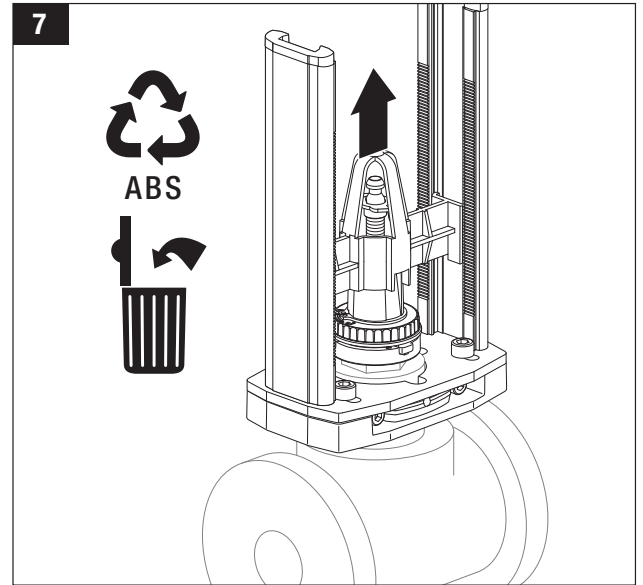
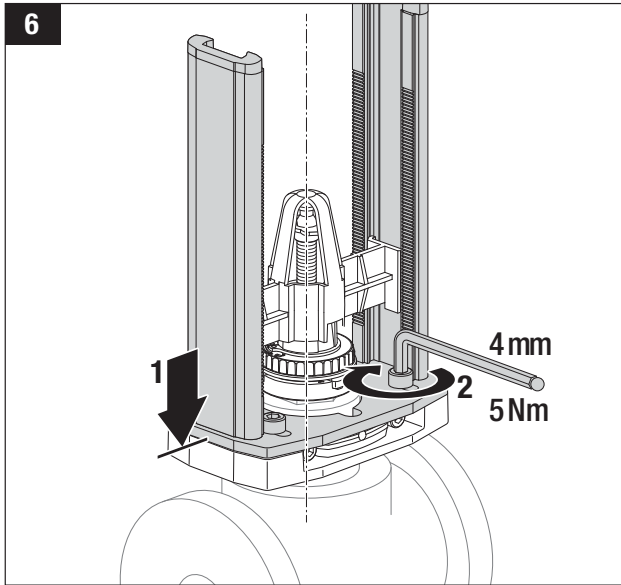
Style B

Style A

4

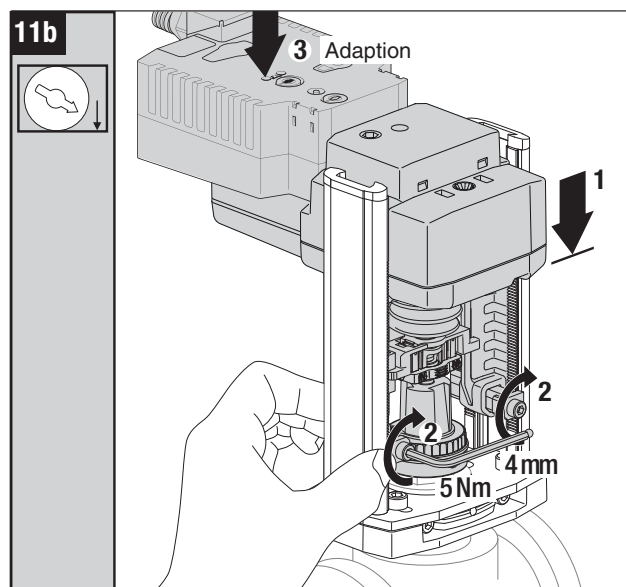
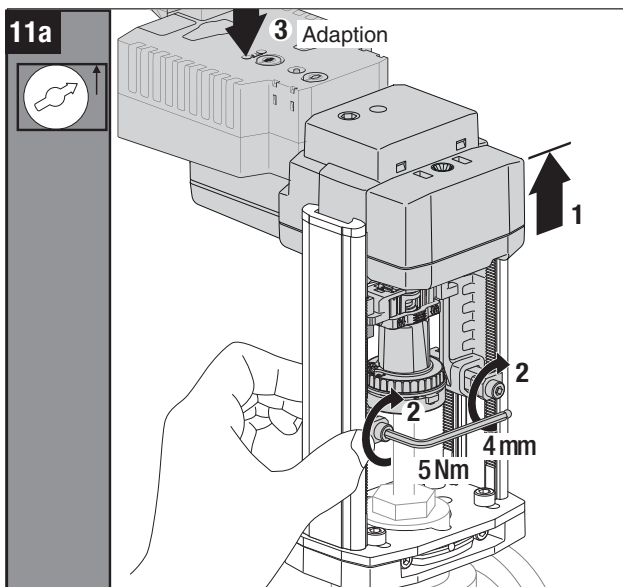
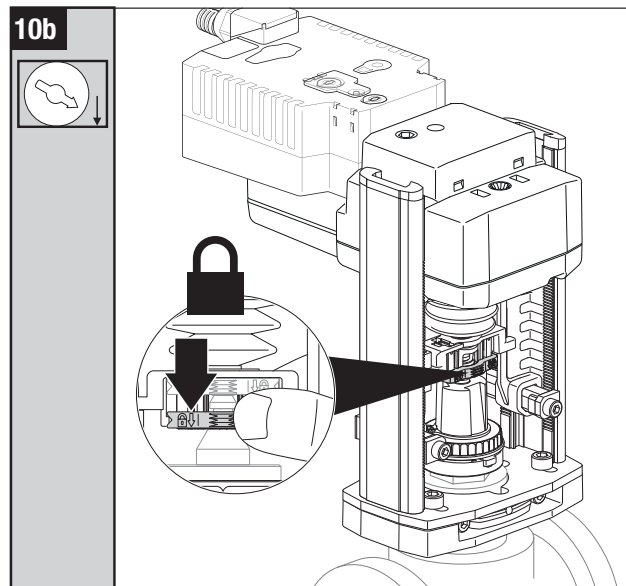
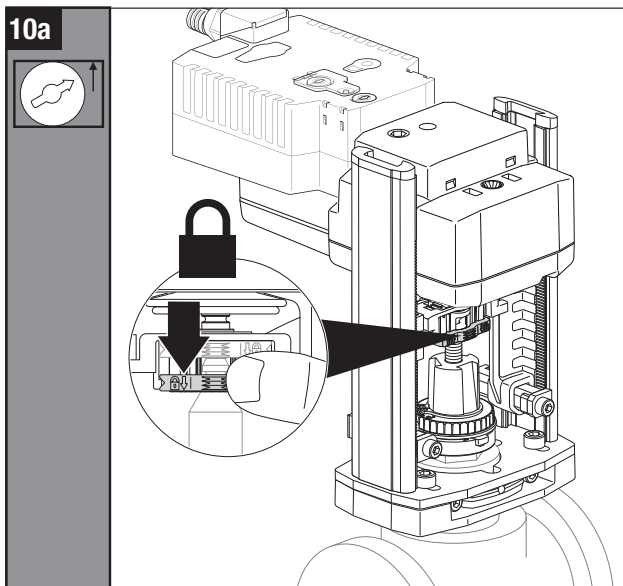
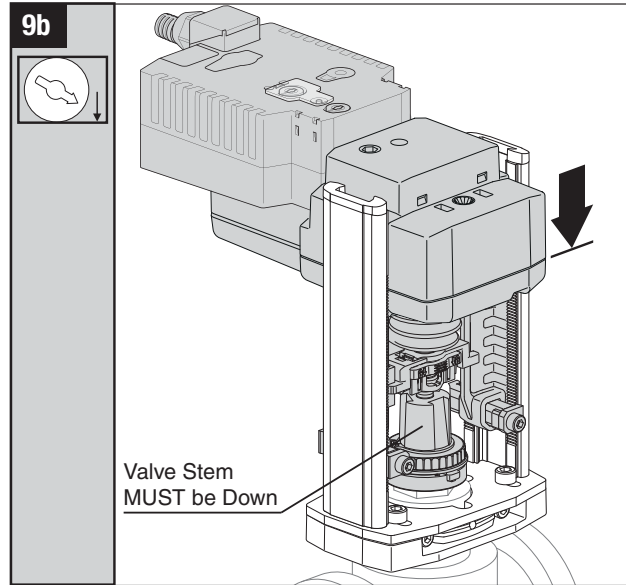
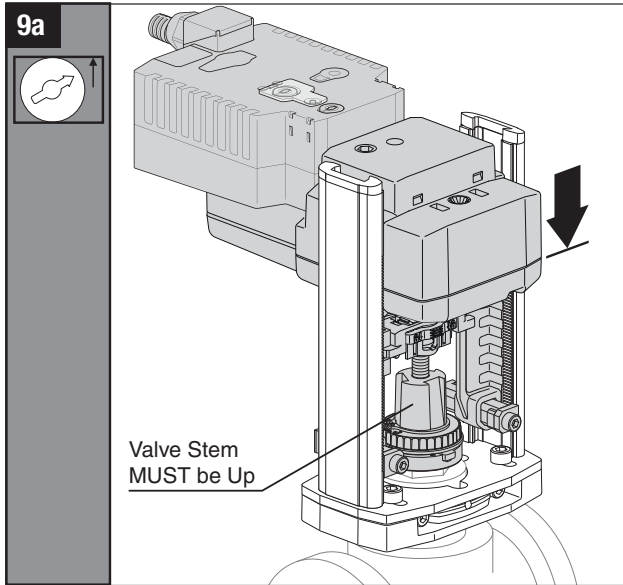
5

UGVL Linkage with LVK and SVK Series Actuators

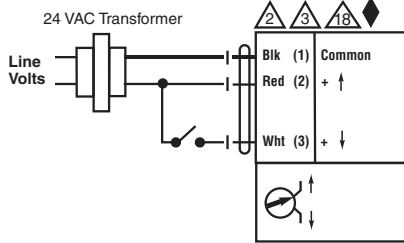
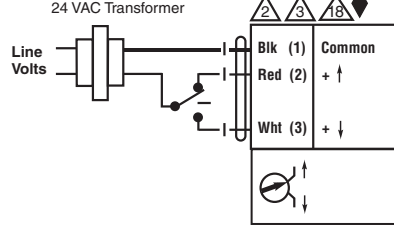
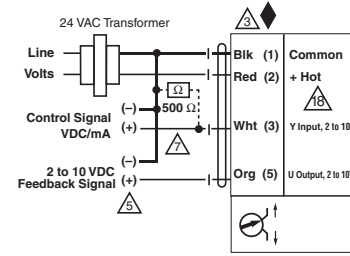
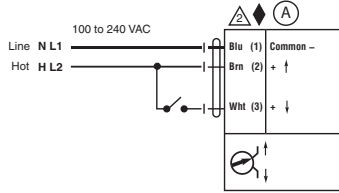
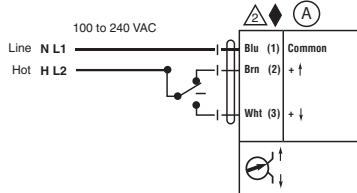
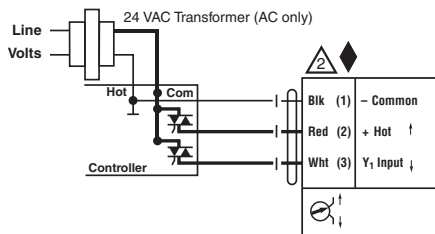
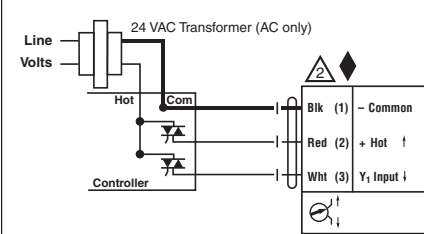
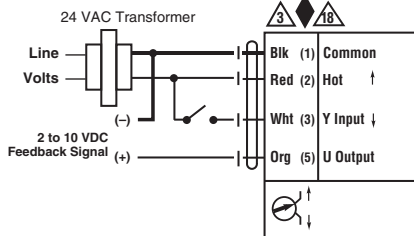
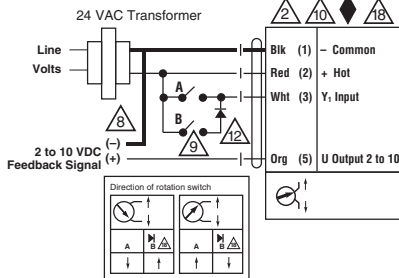


SUBJECT TO CHANGE. © BELIMO AIRCONTROLS (USA), INC.

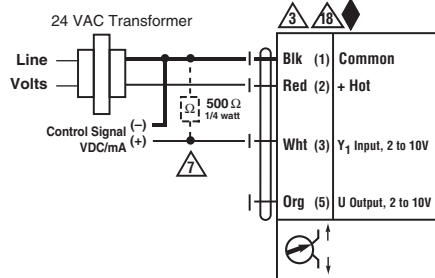
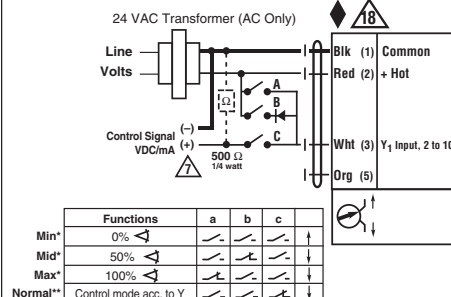
UGVL Linkage with LVK and SVK Series Actuators



SUBJECT TO CHANGE. © BELIMO AIRCONTROLS (USA), INC.

Non-Spring Return Actuator with -3 and -SR

On/Off

Floating Point

VDC / 4 to 20 mA

On/Off

Floating Point

Triac Sink

Triac Source
Non-Spring Return Actuator with MFT

On/Off

Floating Point
Notes:

- ◆ Meets cULus requirements without the need of an electrical ground connection
- Ⓐ Actuators with appliance cables are numbered.
- Ⓐ Actuators may be connected in parallel. Power consumption and input impedance must be observed.
- Ⓐ Actuators may also be powered by 24 VDC.
- Ⓐ Only connect common to neg. (-) leg of control circuits.
- Ⓐ A 500 Ω resistor converts the 4 to 20 mA control signal to 2 to 10 VDC.
- Ⓐ Control signal may be pulsed from either the Hot (Source) or Common (Sink) 24 VAC line.
- Ⓐ Contact closures A & B also can be triacs. A & B should both be closed for the triac source and open for triac sink.
- Ⓐ For triac sink the Common connection from the actuator must be connected to the Hot connection of the controller. Position feedback cannot be used with a triac sink controller. The actuator internal common reference is not compatible.
- Ⓐ IN4004 or IN4007 diode. (IN4007 supplied, Belimo Part number 40155)
- Ⓐ Actuators with plenum rated cable do not have numbers on wires; use color codes instead.


VDC / 4 to 20 mA

Override Control Min, Mid, Max Postions

* Default selectable 0-100%. See Configuration Data Sheet.
** Customizable. See Configuration Data Sheet.

BRN
Brown
Marron
Brun
Marron

BLU
Blue
Azul
Bleu
Azul

ORG
Orange
Anaranjado
Orange
Alaranjado

PNK
Pink
Rosado
Rosa
Cor-de ros

WHT
White
Blanco
Blanc
Branco

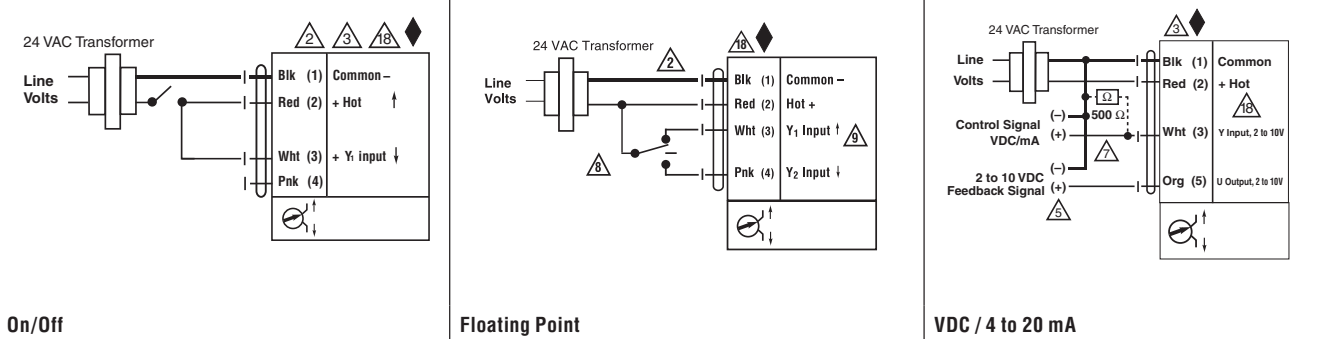
RED
Red
Rojo
Rouge
Vermelho

BLK
Black
Negro
Noir
Preto

LVK and SVK Series Actuators

WIRING DIAGRAMS

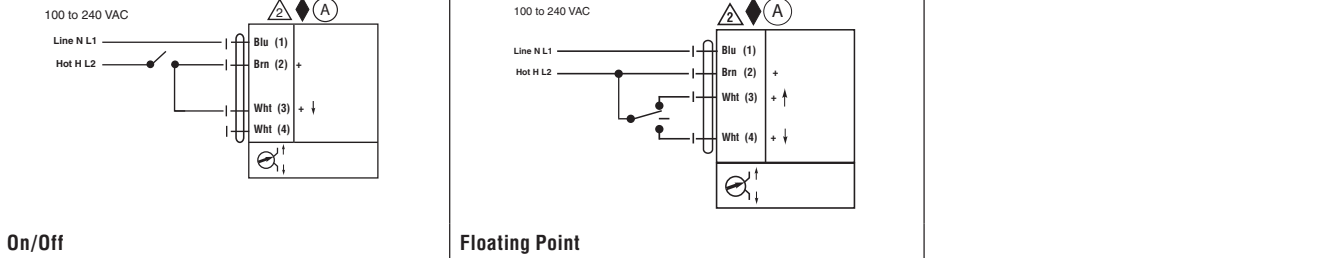
Electronic Fail-Safe Actuator with -3 and -SR



On/Off

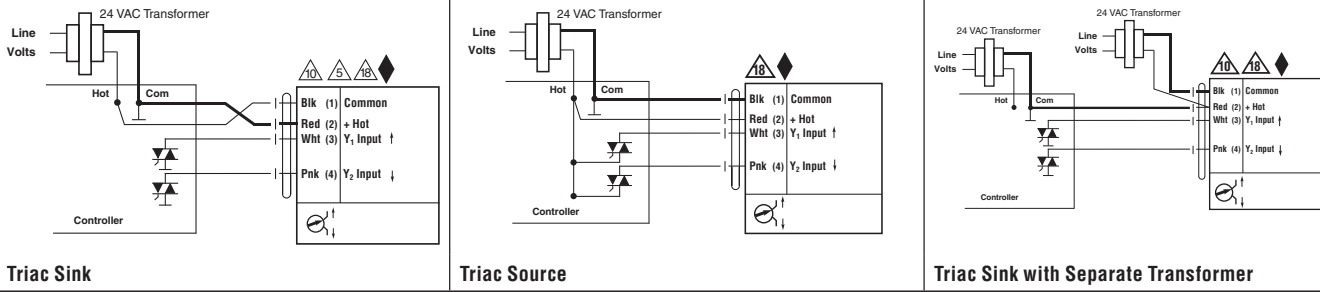
Floating Point

VDC / 4 to 20 mA



On/Off

Floating Point

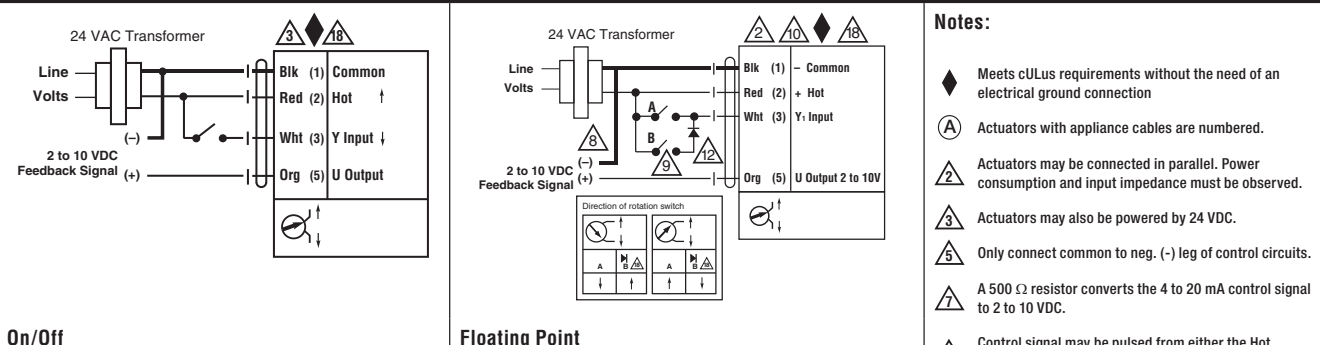


Triac Sink

Triac Source

Triac Sink with Separate Transformer

Electronic Fail-Safe Actuator with MFT

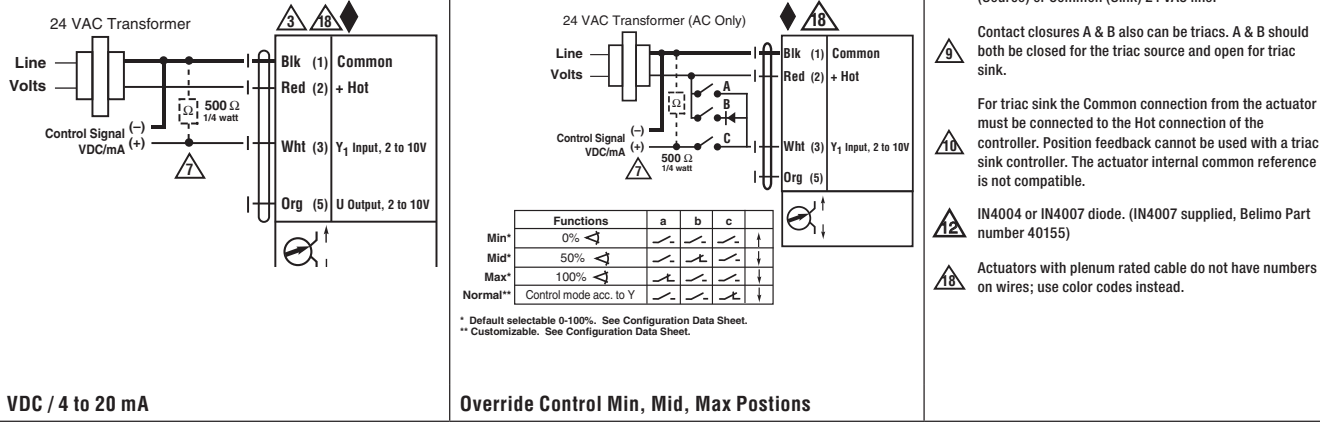


On/Off

Floating Point

Notes:

- ◆ Meets cULus requirements without the need of an electrical ground connection
- Ⓐ Actuators with appliance cables are numbered.
- Ⓐ Actuators may be connected in parallel. Power consumption and input impedance must be observed.
- Ⓐ Actuators may also be powered by 24 VDC.
- Ⓐ Only connect common to neg. (-) leg of control circuits.
- Ⓐ A 500 Ω resistor converts the 4 to 20 mA control signal to 2 to 10 VDC.
- Ⓐ Control signal may be pulsed from either the Hot (Source) or Common (Sink) 24 VAC line.
- Ⓐ Contact closures A & B also can be triacs. A & B should both be closed for the triac source and open for triac sink.
- Ⓐ For triac sink the Common connection from the actuator must be connected to the Hot connection of the controller. Position feedback cannot be used with a triac sink controller. The actuator internal common reference is not compatible.
- Ⓐ IN4004 or IN4007 diode. (IN4007 supplied, Belimo Part number 40155)
- Ⓐ Actuators with plenum rated cable do not have numbers on wires; use color codes instead.



VDC / 4 to 20 mA

Override Control Min, Mid, Max Postions

* Default selectable 0-100%. See Configuration Data Sheet.
 ** Customizable. See Configuration Data Sheet.

BRN
Brown
Marron
Brun
Marrom

BLU
Blue
Azul
Bleu
Azul

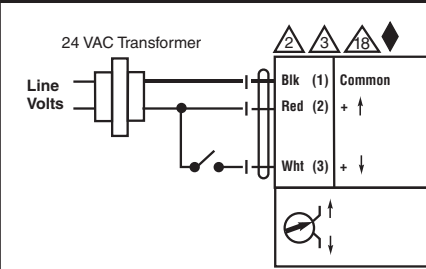
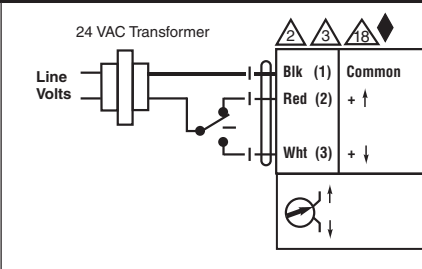
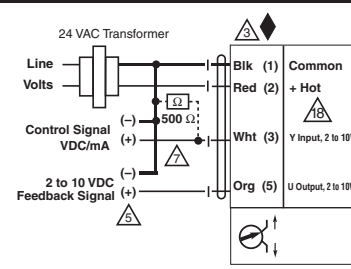
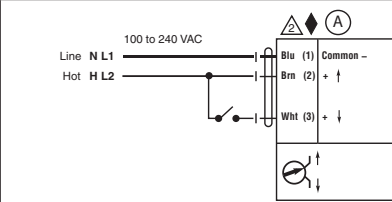
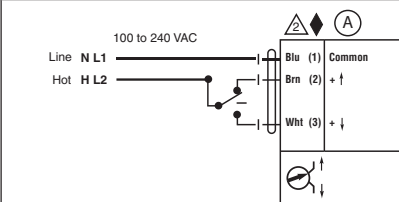
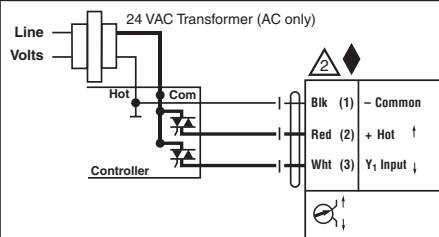
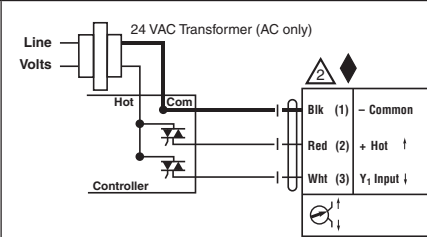
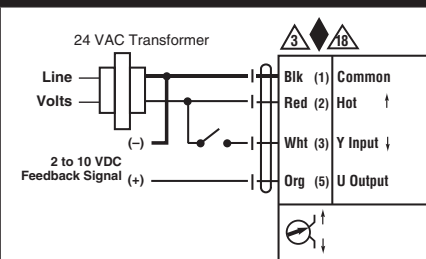
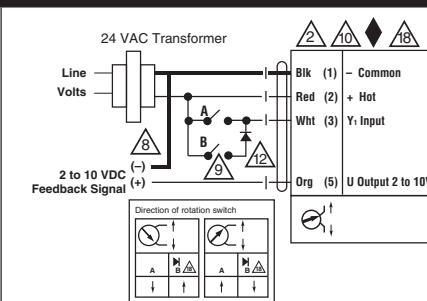
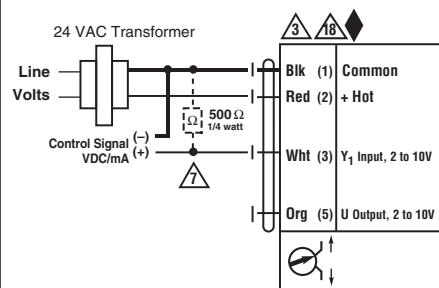
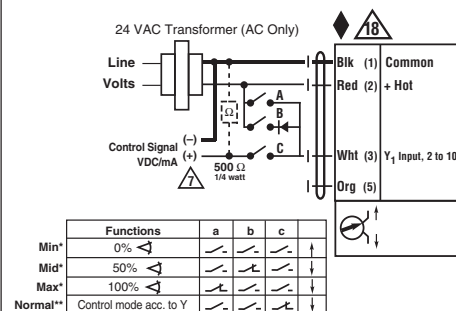
ORG
Orange
Anaranjado
Orange
Alaranjado

PNK
Pink
Rosado
Rosa
Cor-de-ros

WHT
White
Blanco
Blanc
Branco

RED
Red
Rojo
Rouge
Vermelho

BLK
Black
Negro
Noir
Pretu

Non-Spring Return Actuator with -3

On/Off

Floating Point

VDC / 4 to 20 mA

On/Off

Floating Point

Triac Sink

Triac Source
Non-Spring Return Actuator with MFT

On/Off

Floating Point

VDC / 4 to 20 mA


* Default selectable 0-100%. See Configuration Data Sheet.
 ** Customizable. See Configuration Data Sheet.

Override Control Min, Mid, Max Postions
Notes:

- ◆ Meets cULus requirements without the need of an electrical ground connection
- Ⓐ Actuators with appliance cables are numbered.
- Ⓐ Actuators may be connected in parallel. Power consumption and input impedance must be observed.
- Ⓐ Actuators may also be powered by 24 VDC.
- Ⓐ Only connect common to neg. (-) leg of control circuits.
- Ⓐ A 500 Ω resistor converts the 4 to 20 mA control signal to 2 to 10 VDC.
- Ⓐ Control signal may be pulsed from either the Hot (Source) or Common (Sink) 24 VAC line.
- Ⓐ Contact closures A & B also can be triacs. A & B should both be closed for the triac source and open for triac sink.
- Ⓐ For triac sink the Common connection from the actuator must be connected to the Hot connection of the controller. Position feedback cannot be used with a triac sink controller. The actuator internal common reference is not compatible.
- Ⓐ IN4004 or IN4007 diode. (IN4007 supplied, Belimo Part number 40155)
- Ⓐ Actuators with plenum rated cable do not have numbers on wires; use color codes instead.

BRN
Brown
Marron
Brun
Marrom

BLU
Blue
Azul
Bleu
Azul

ORG
Orange
Anaranjado
Orange
Alaranjado

PNK
Pink
Rosado
Rosa
Cor-de ros

WHT
White
Blanco
Blanc
Branco

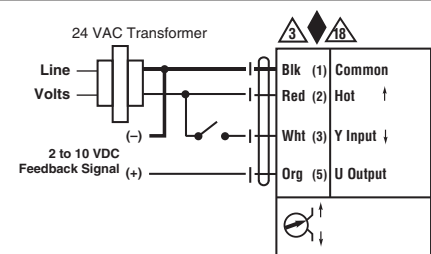
RED
Red
Rojo
Rouge
Vermelho

BLK
Black
Negro
Noir
Preto

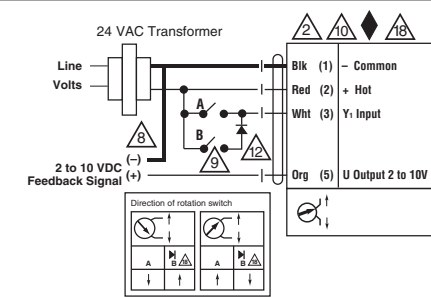
RV Series Actuators

WIRING DIAGRAMS

Non-Spring Return Actuator with -3

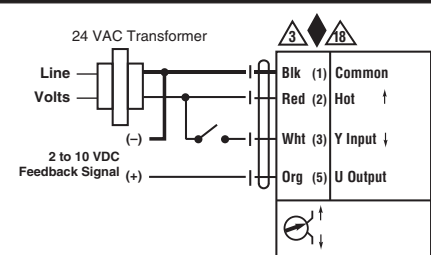


On/Off

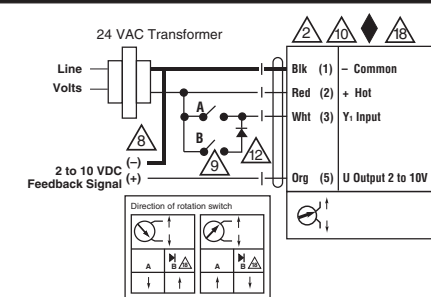


Floating Point

Non-Spring Return Actuator with MFT



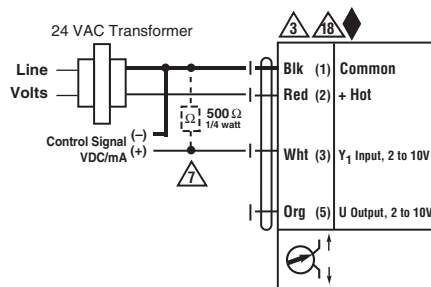
On/Off



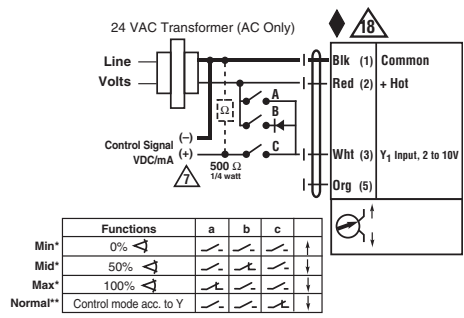
Floating Point

Notes:

- ◆ Meets cULus requirements without the need of an electrical ground connection
- 2 Actuators may be connected in parallel. Power consumption and input impedance must be observed.
- 3 Actuators may also be powered by 24 VDC.
- 7 A 500 Ω resistor converts the 4 to 20 mA control signal to 2 to 10 VDC.
- 8 Control signal may be pulsed from either the Hot (Source) or Common (Sink) 24 VAC line.
- 9 Contact closures A & B also can be triacs. A & B should both be closed for the triac source and open for triac sink.
- 10 For triac sink the Common connection from the actuator must be connected to the Hot connection of the controller. Position feedback cannot be used with a triac sink controller. The actuator internal common reference is not compatible.
- 12 IN4004 or IN4007 diode. (IN4007 supplied, Belimo Part number 40155)
- 18 Actuators with plenum rated cable do not have numbers on wires; use color codes instead.



VDC / 4 to 20 mA

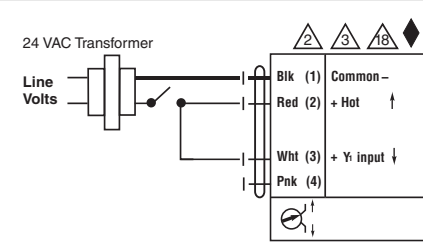
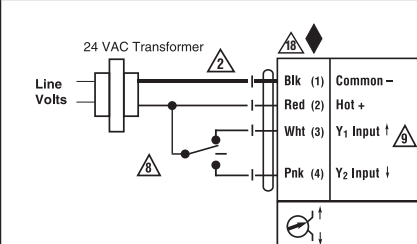
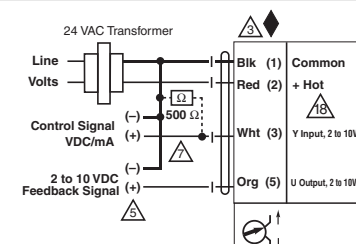
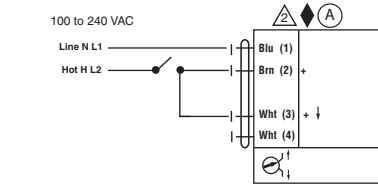
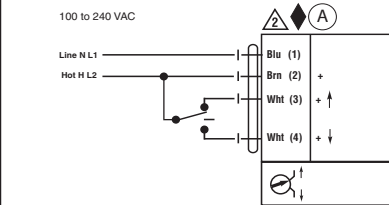
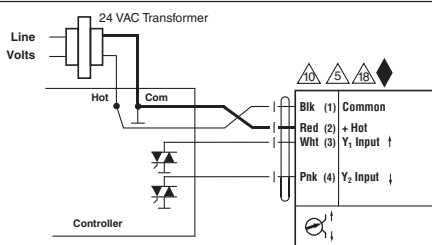
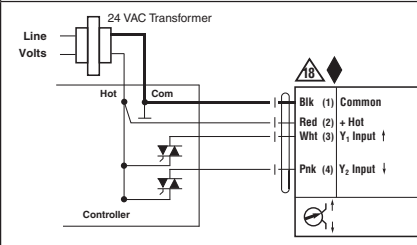
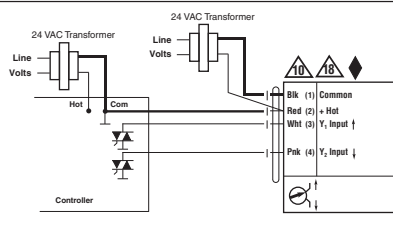
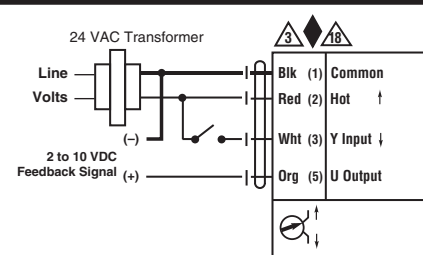
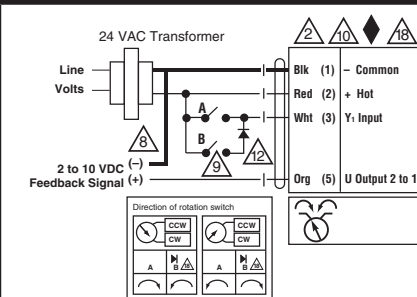
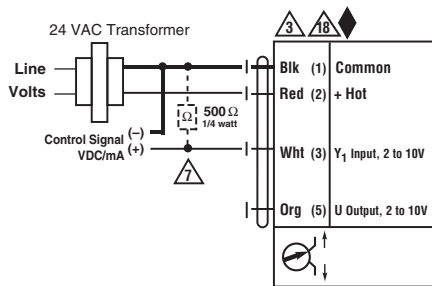
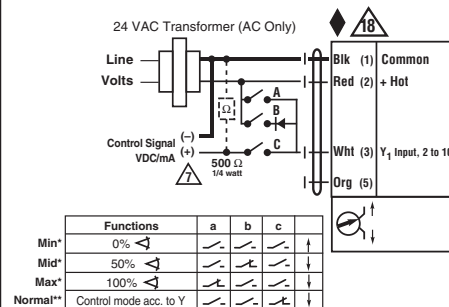


Override Control Min, Mid, Max Postions

Functions	a	b	c
Min*	↔	↔	↔
Mid*	↔	↔	↔
Max*	↔	↔	↔
Normal**	↔	↔	↔

* Default selectable 0-100%. See Configuration Data Sheet.
 ** Customizable. See Configuration Data Sheet.

- BRN Brown
- BLU Blue
- ORG Orange
- PNK Pink
- WHT White
- BLK Black
- BRN Brown
- BLU Blue
- ORG Orange
- PNK Pink
- WHT White
- BLK Black
- Marron
- Azul
- Anaranjado
- Rosa
- Blanco
- Negro
- Brun
- Bleu
- Orange
- Rosa
- Blanc
- Noir
- Vermeelho
- Marron
- Azul
- Alaranjado
- Cor-de ros
- Branco
- Preto

Electronic Fail-Safe Actuator with -3

On/Off

Floating Point

VDC / 4 to 20 mA

On/Off

Floating Point

Triac Sink

Triac Source

Triac Sink with Separate Transformer
Electronic Fail-Safe Actuator with MFT

On/Off

Floating Point

VDC / 4 to 20 mA

Override Control Min, Mid, Max Positions
Notes:

- ◆ Meets cULus requirements without the need of an electrical ground connection
- Ⓐ Actuators with appliance cables are numbered.
- Ⓐ Actuators may be connected in parallel. Power consumption and input impedance must be observed.
- Ⓐ Actuators may also be powered by 24 VDC.
- Ⓐ Only connect common to neg. (-) leg of control circuits.
- Ⓐ A 500 Ω resistor converts the 4 to 20 mA control signal to 2 to 10 VDC.
- Ⓐ Control signal may be pulsed from either the Hot (Source) or Common (Sink) 24 VAC line.
- Ⓐ Contact closures A & B also can be triacs. A & B should both be closed for the triac source and open for triac sink.
- Ⓐ For triac sink the Common connection from the actuator must be connected to the Hot connection of the controller. Position feedback cannot be used with a triac sink controller. The actuator internal common reference is not compatible.
- Ⓐ IN4004 or IN4007 diode. (IN4007 supplied, Belimo Part number 40155)
- Ⓐ Actuators with plenum rated cable do not have numbers on wires; use color codes instead.

- BRN**
Brown
Marron
Brun
Marron
- BLU**
Blue
Azul
Bleu
Azul
- ORG**
Orange
Anaranjado
Orange
Alaranjado
- PNK**
Pink
Rosado
Cor-de ros
- WHT**
White
Blanco
Bianco
Branco
- RED**
Red
Rojo
Rouge
Vermelho
- BLK**
Black
Negro
Noir
Preto

Belimo worldwide: www.belimo.com

BELIMO Americas

USA Locations, 43 Old Ridgebury Road, Danbury, CT 06810
Tel. 800-543-9038, Fax 800-228-8283, marketing@us.belimo.com

1049 Fortunato Loop, Sparks, NV 89436
Tel. 800-987-9042, Fax 800-987-8875, marketing@us.belimo.com

Canada Locations, 5845 Kennedy Road, Mississauga, Ontario L4Z 2G3
Tel. 866-805-7089, Fax 905-712-3124, marketing@us.belimo.com

Latin America and the Caribbean Customer Service
Tel. 203-791-8396, Fax 203-791-9139, marketing@us.belimo.com

Belimo Brasil Comércio de Automação Ltda.
Tel: 55 11 3643-5656, Fax: 55 11 3643 5657, atendimentoaocliente@br.belimo.com.

