

# Instructions for Downloading the Latest Software Enhancements for the GreenStar™ System

GS2 1800 Display  
GS2 2100 Display  
GS2 2600 Display  
GS3 2630 Display



Updated July 2017

# Instructions for Updating Software

## GreenStar™ Displays and System Components

These instructions cover installing GreenStar™ LiveUpdate, downloading updates, and updating GreenStar™ displays along with system components. GreenStar™ LiveUpdate is a utility that runs on a laptop or desktop and is compatible with MS Windows operating systems. It provides an alert when an update is available and manages the downloading and handling of update files for GreenStar™ displays and system components including StarFire™ Receivers, Original GreenStar™ Displays, GreenStar™ Rate Controller, etc.

### Table of Contents

|   |           |
|---|-----------|
| <b>SECTION A: DOWNLOAD AND INSTALL GREENSTAR™ LIVEUPDATE.....</b>       | <b>2</b>  |
| <b>SECTION B: COPY UPDATE FILES TO EXTERNAL MEMORY CARD .....</b>       | <b>7</b>  |
| <b>SECTION C: GS2 2100 AND 2600 DISPLAYS.....</b>                       | <b>11</b> |
| <b>SECTION D: GS2 1800 DISPLAY .....</b>                                | <b>12</b> |
| <b>SECTION E: GS3 2630 DISPLAY .....</b>                                | <b>14</b> |
| <b>SECTION F: FORMATTING A NEW COMPACT FLASH CARD OR USB .....</b>      | <b>15</b> |
| <b>SECTION G: REMOVING FILES OFF COMPACT FLASH CARD OR USB .....</b>    | <b>17</b> |
| <b>SECTION H: VERIFYING CURRENT VERSION OF SOFTWARE INSTALLED .....</b> | <b>17</b> |

## Section A: Download and Install GreenStar™ LiveUpdate

If you already have LiveUpdate installed for the display being updated, go to Section B,

1. Go to [www.deere.com](http://www.deere.com) .
2. Click on **Parts & Service**.
3. Click **StellarSupport™** from the drop-down menu.
4. Click on **Software Updates**.
5. Click to expand the **GreenStar™ 3 2630 & GreenStar™ 2 (1800, 2100/2600) Displays** section.
6. Click on the **Download Software** button.



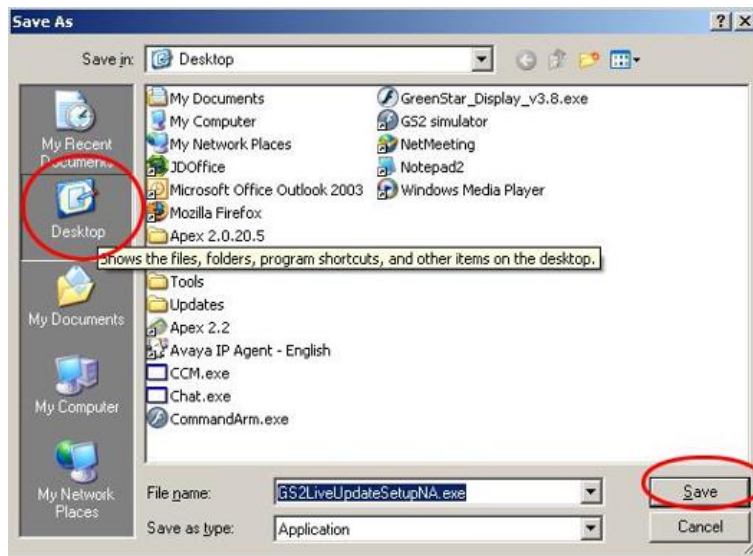
# Instructions for Updating Software

## GreenStar™ Displays and System Components

7. Click **Save**.



8. Click on **Desktop** first; then **Save**.



NOTE: If the following window appears, click **Run** and go to Step 6.



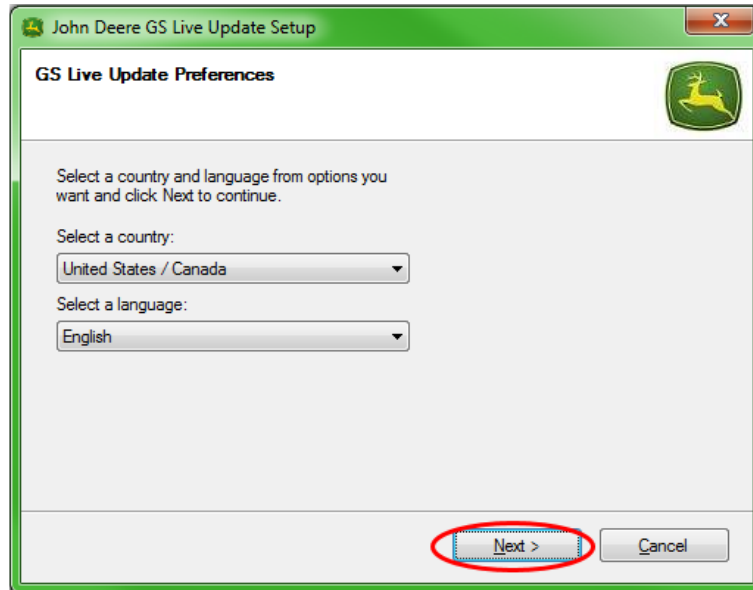
# Instructions for Updating Software

## GreenStar™ Displays and System Components

9. Once the application has finished downloading, locate the GSLiveUpdateSetupNA.exe icon in your desktop and double click it.

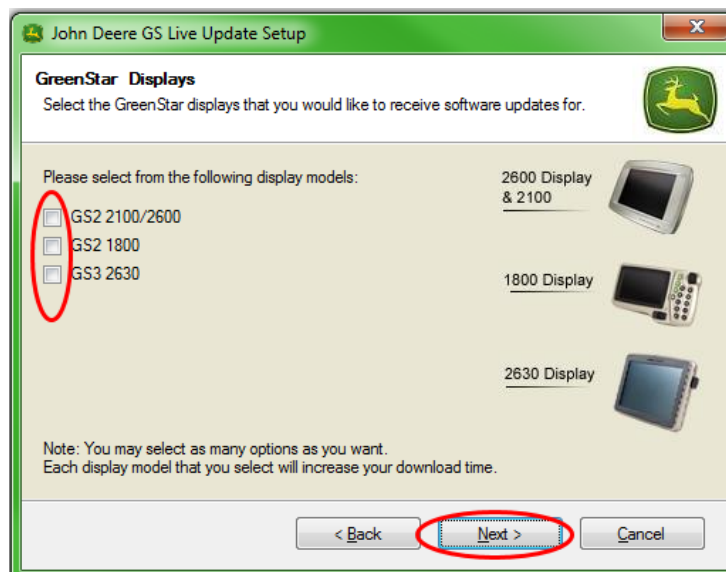


10. Select your **country** and **language**, and then press **Next**.



11. Check the box related to the display(s) that you currently own in order to download the appropriate software and click **Next** to continue.

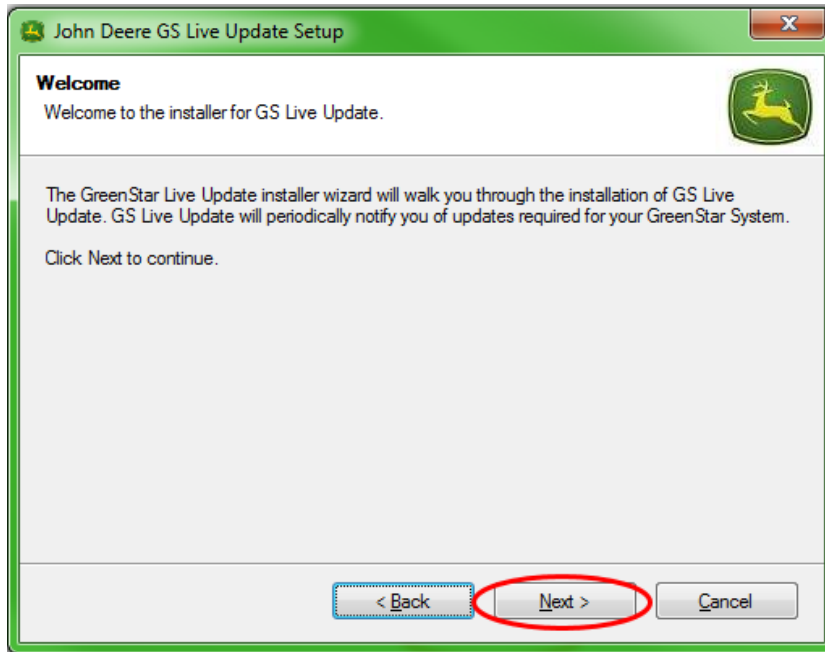
**NOTE:** It is recommended to select **every** display that you own so that the updates are downloaded at the same time. If you need to download an update for a display at a later time, return to Deere.com and select the download button for that display's update, see Step 1.



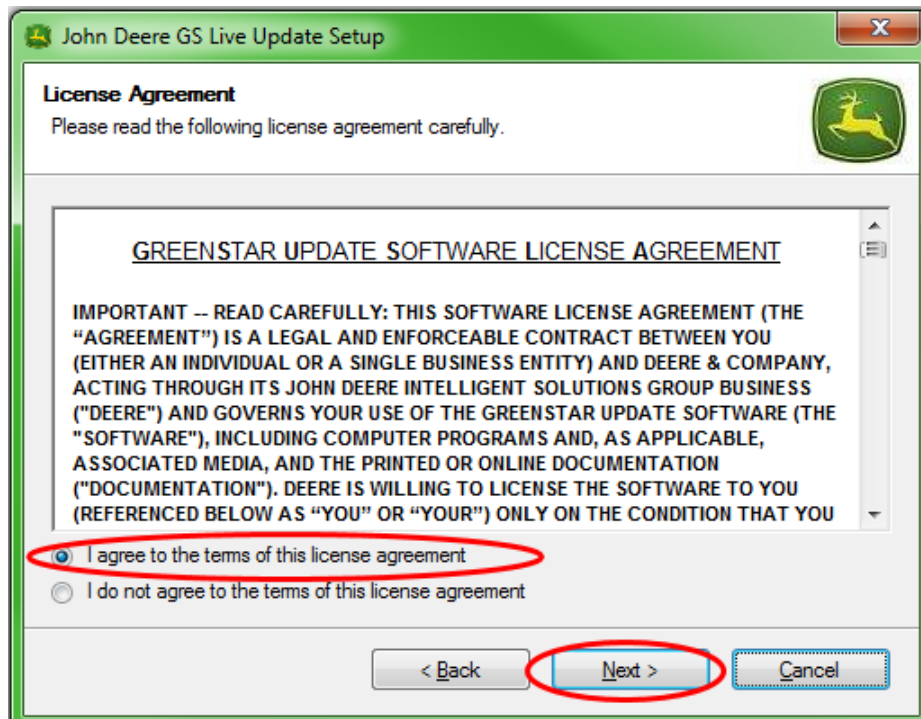
# Instructions for Updating Software

## GreenStar™ Displays and System Components

12. Read the Welcome page and click **Next** to continue.



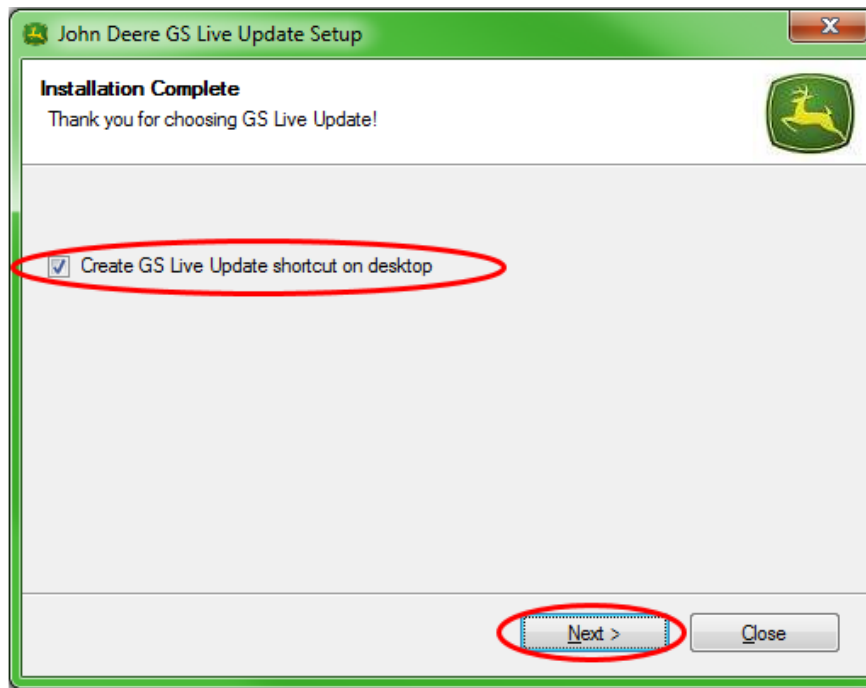
13. Read the software license agreement for LiveUpdate, select “**I agree...**” and **Next** to continue.



## Instructions for Updating Software

### GreenStar™ Displays and System Components

14. Make sure the Create GS Live Update shortcut on desktop is selected and click **Next**. LiveUpdate will automatically open.



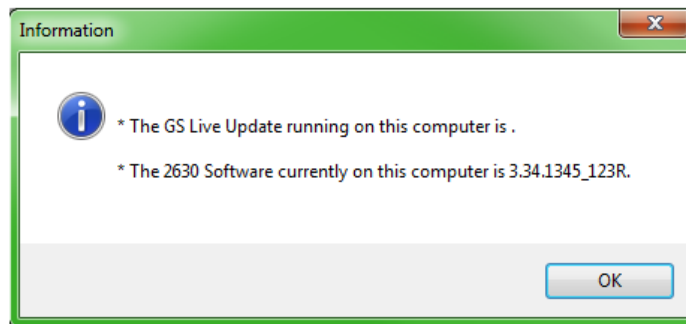
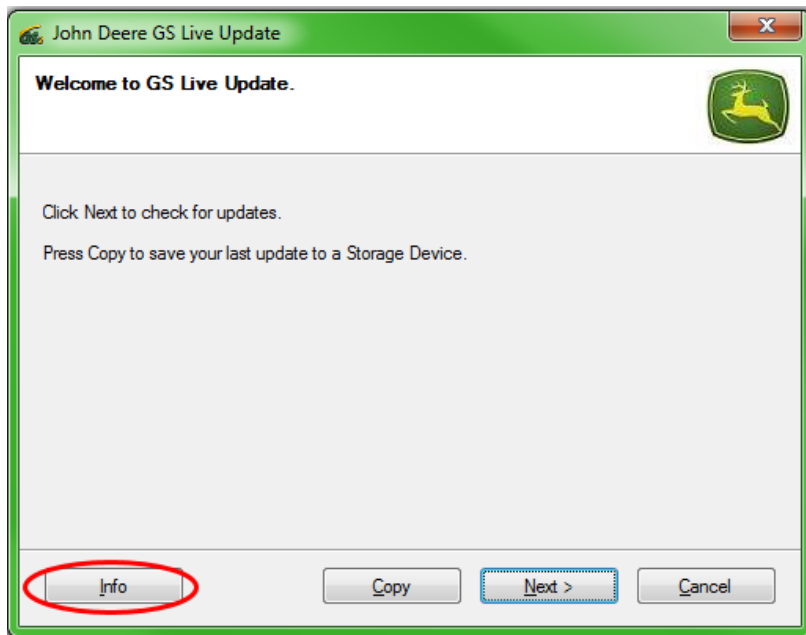
# Instructions for Updating Software

## GreenStar™ Displays and System Components

### Section B: Copy Update Files to External Memory Card

*Memory Card* refers to *Compact Flash Card* or *USB memory device* depending on whether the GS2 2100/2600 or GS2 1800/GS3 2630 display is being updated, respectively.

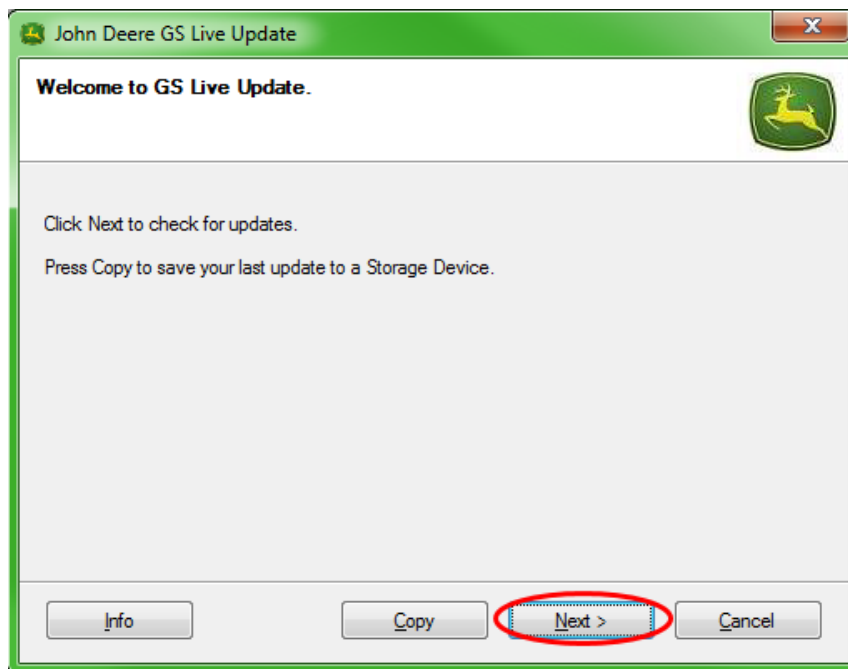
1. Open LiveUpdate if it is not already open.
2. Insert Memory Card into computer. *Verify that only one memory card is inserted.*
3. Select **Info** to determine the version of software currently in LiveUpdate for each display.



NOTE: The version of software currently in LiveUpdate should be greater than the current version installed on the display. Please refer to Section H, Steps 1-5 for more information.

## Instructions for Updating Software GreenStar™ Displays and System Components

4. Select **Next** to check for the latest updates.



NOTE: It is recommended to clear all update files from your memory card before performing step 5. Please refer to Section G, Steps 1-9 for instructions on this process.

**IMPORTANT: Remove all reprogramming files off before installing new update files to the memory card or USB.**

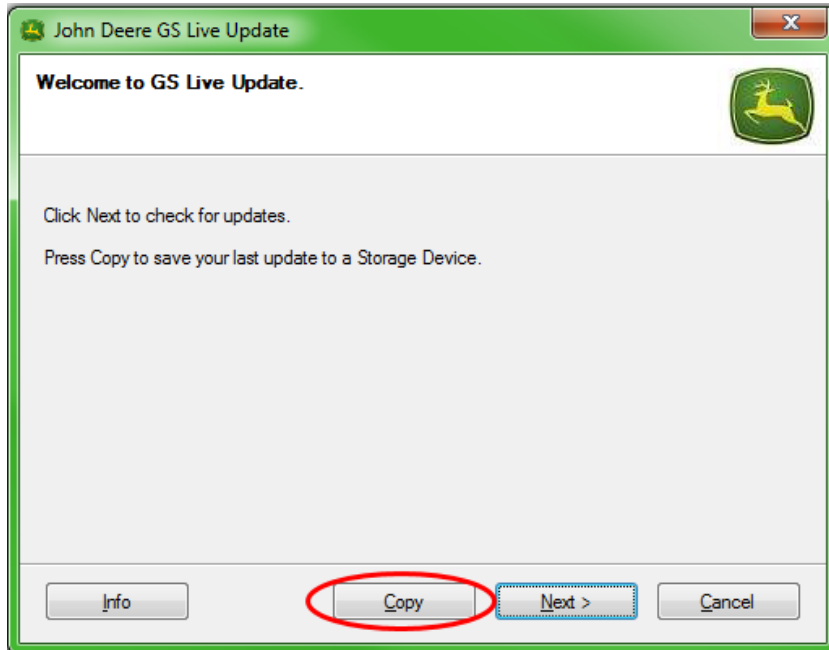
NOTE: If this is the first time you are using your new memory card, you will need to format it before saving any update files to it. Please refer to Section F, steps 1-7 for further instruction on this process.



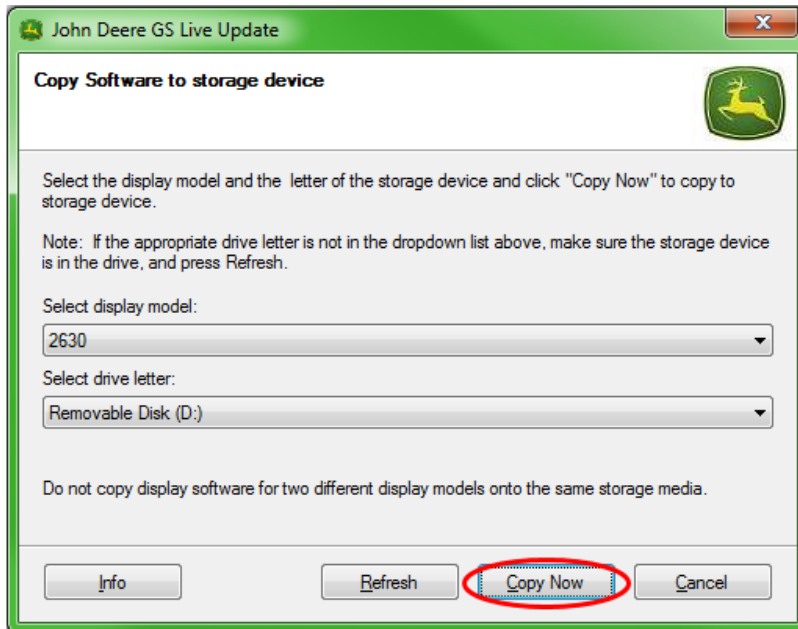
# Instructions for Updating Software

## GreenStar™ Displays and System Components

5. Select **Copy** to transfer the update files from LiveUpdate to your memory card.

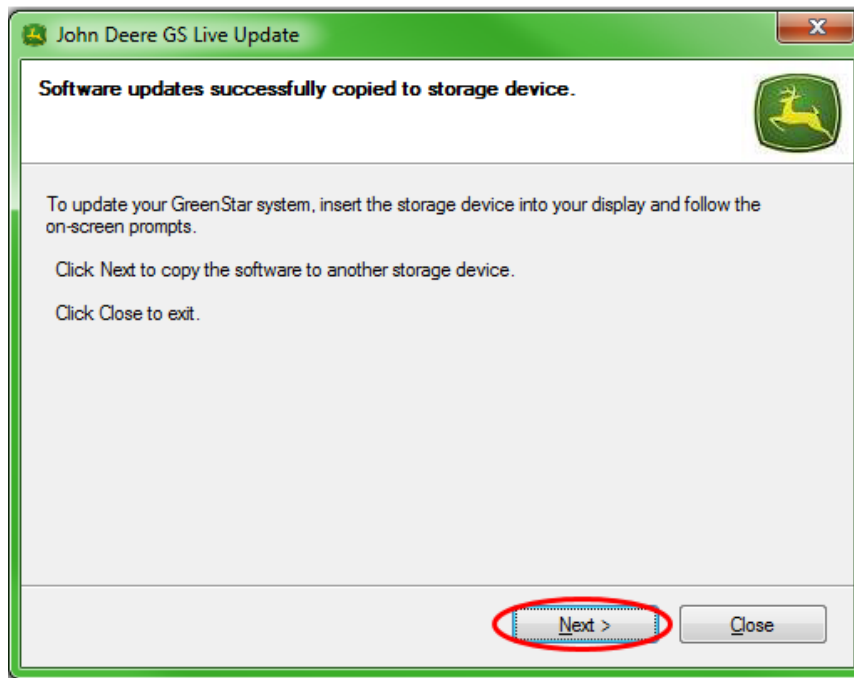


Select **Display Model** and **drive letter**. If your memory card does not show up, unplug the card reader or USB memory stick and try another USB port, then press Refresh until it appears. Click on **Copy Now** to copy the updates to the memory card.



## Instructions for Updating Software GreenStar™ Displays and System Components

- When the update is done you will see the following window. Click **Close**.



- Remove the memory card from the computer.

# Instructions for Updating Software

## GreenStar™ Displays and System Components

### Section C: GS2 2100 and 2600 Displays

The display will not be available for use during software updates. Updating the display and other controllers may take an hour or more.

**IMPORTANT: DO NOT remove switched power, unswitched power, or flash card while reprogramming.**

1. Insert compact flash card into the display (with system OFF).
2. Turn on the key in the machine to power the display.



NOTE: The display will check the software versions of the display and applicable controllers connected to the system and list the updates available on the flash card. If this message is not displayed, download and copy the software update to the flash card again.



3. Select Accept to update the display and all of the controllers listed



4. The following message will appear when the update is complete:

*The update was successfully installed.*

5. Select Accept



# Instructions for Updating Software

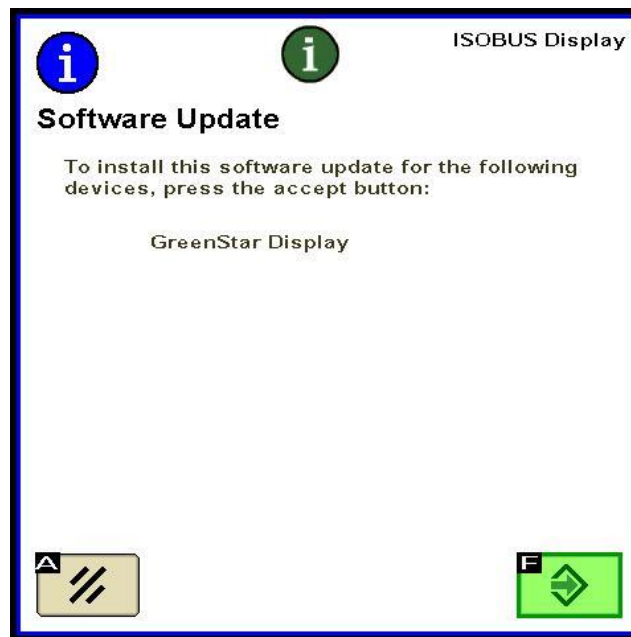
## GreenStar™ Displays and System Components


### Section D: GS2 1800 Display

The display will check the software versions of the display and applicable controllers connected to the system and list the updates available on the USB memory. If this message is not displayed, download and copy the software update to the USB memory again. *Controller updates (e.g. StarFire Receiver, etc.) remain on the USB device and are not stored in the display.*

**IMPORTANT: DO NOT remove switched power, unswitched power, or USB memory device while reprogramming.**

1. Insert the USB memory device into the display (with system ON).
2. A *USB Detected* message will appear if the display recognizes the USB device. Read and Accept it.



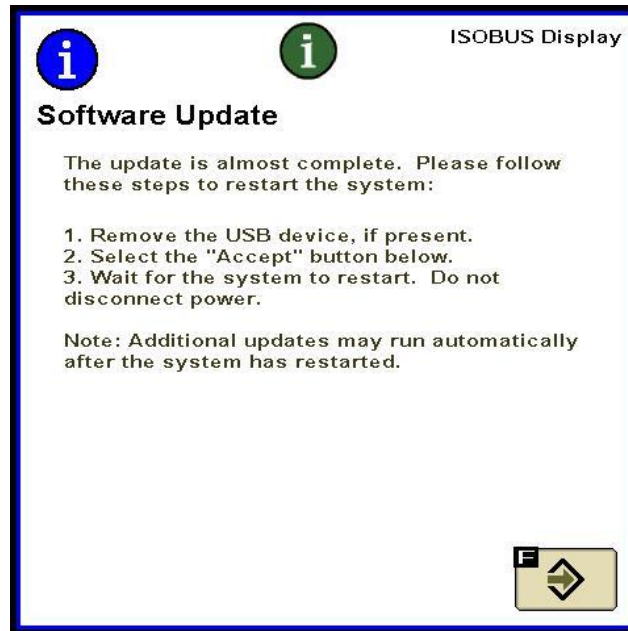
3. Select Accept to update the display and all of the controllers listed .

NOTE: The display will not be available for use during software updates. Updating the display and other controllers may take an hour or more.

## Instructions for Updating Software

### GreenStar™ Displays and System Components

4. During reprogramming, the following message will appear. The display will reboot itself and continue to reprogram after this message is accepted.



5. Once the update is complete, a message with a Green Check Mark will appear.

# Instructions for Updating Software

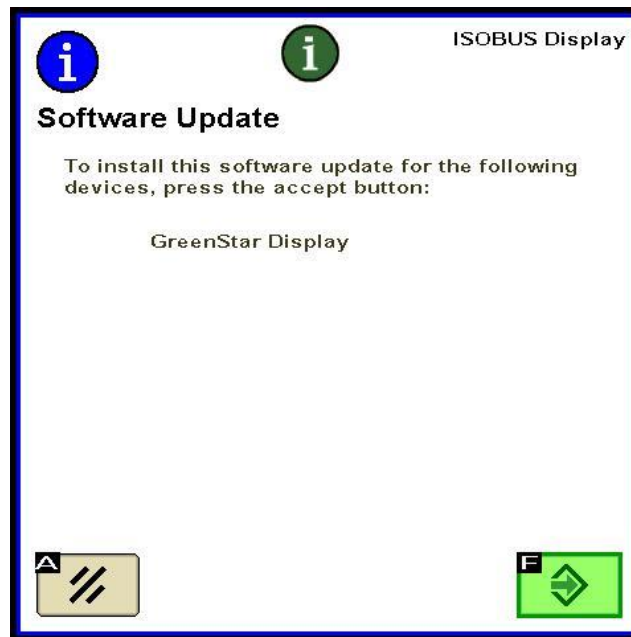
## GreenStar™ Displays and System Components


### Section E: GS3 2630 Display

The display will check the software versions of the display and applicable controllers connected to the system and list the updates available on the USB memory. If this message is not displayed, download and copy the software update to the USB memory again. *Controller updates (e.g. StarFire Receiver, etc.) remain on the USB device and are not stored in the display.*

**IMPORTANT: DO NOT remove switched power, unswitched power, or USB memory device while reprogramming.**

1. Insert the USB memory device into the display (with system ON).
2. A *USB Detected* message will appear if the display recognizes the USB device. Read and Accept it.



3. Select Accept to update the display and all of the controllers listed .

NOTE: The display will not be available for use during software updates. Updating the display and other controllers may take an hour or more.

4. Once the update is complete, a message with a Green Check Mark will appear.

# Instructions for Updating Software

## GreenStar™ Displays and System Components

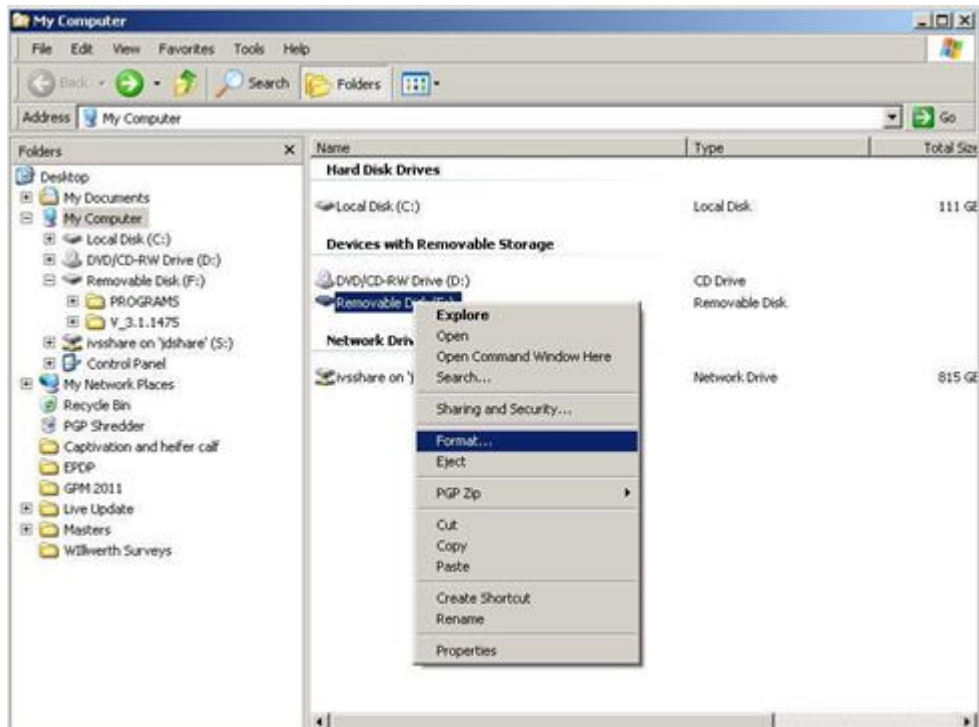
### Section F: Formatting a New Compact Flash Card or USB

The display will check the software versions of the display and applicable controllers connected to the system and list the updates available on the USB memory. If this message is not displayed, you need to verify what version of software you have on the display and memory card.

1. To format a new memory card or USB memory, insert the memory card into the computer.
2. Open the **My Computer** icon on the desktop. This may be listed as **Computer** for Vista and Windows 7 OS.



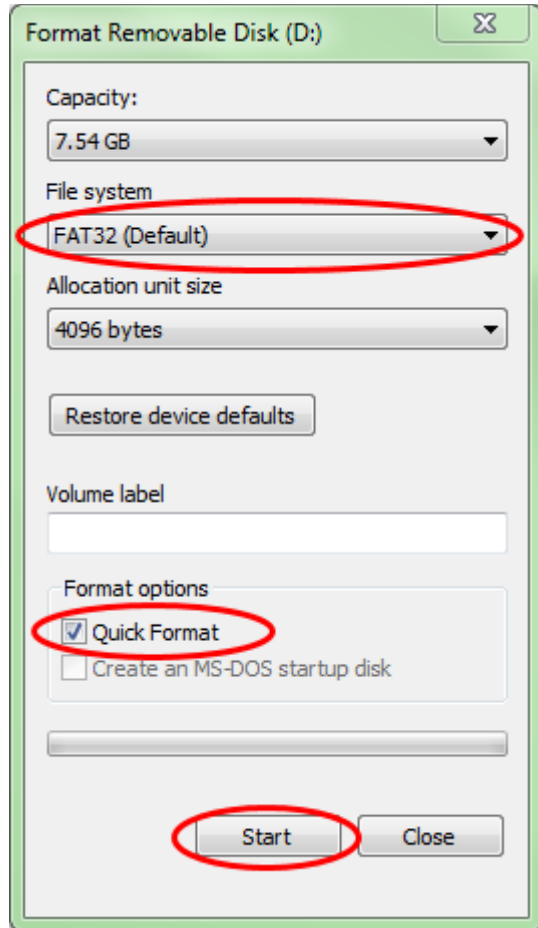
3. Right-click on the Drive Letter your memory card is currently plugged into.
4. Select the **format** option.



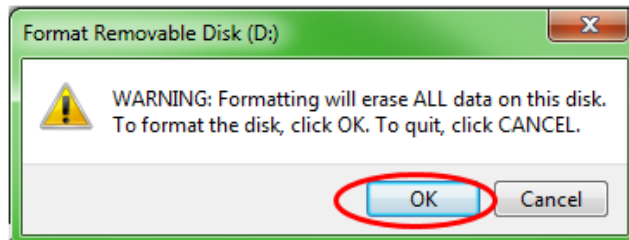
# Instructions for Updating Software

## GreenStar™ Displays and System Components

5. In the pop-up screen, change the File System to **FAT32**, select the box next to **Quick format**, and select **Start**.



6. Read the pop up warning that appears on the next screen, select **OK**.



NOTE: If you format a memory card with data on it, the data will be permanently deleted during the format process. To prevent the loss of vital data, unload all data into Apex™ or save a copy of the entire memory card content to another location.

7. Acknowledge the format complete message.



## Section G: Removing Files Off Compact Flash Card or USB

1. To remove old software files off your memory card, insert the memory card into the computer.
2. Open the **My Computer** icon on the desktop. This may be listed as **Computer** for Vista and Windows 7 OS.



3. Open the Drive Letter your memory card is currently plugged into.
4. Right-click on the folder whose name begins with “V” followed by a series of numbers. Select the **Delete** option.
5. Right-click on the **Programs** folder and select **Delete**.
6. Right-click on the **Fonts** folder and select **Delete**.
7. Right-click on **ManifestFile.sdm** and select **Delete**.
8. Right-click on **ManifestFile.crc** and select **Delete**.
9. Right-click on the **Flash Files** folder and select **Delete**.

Note: The **ManifestFile.crc** file, **Flash Files** folder, and **Fonts** folder will only be listed for certain displays.

## Section H: Verifying Current Version of Software Installed

1. To determine the software version currently installed in a GreenStar™ Display, select **Menu >> Display >> Diagnostics >> About** and reference the **Application Software Build number**.
2. To determine the software version currently loaded to the memory card, insert the memory card into the computer.
3. Open the **My Computer** icon on the desktop. This may be listed as **Computer** for Vista and Windows 7 OS.



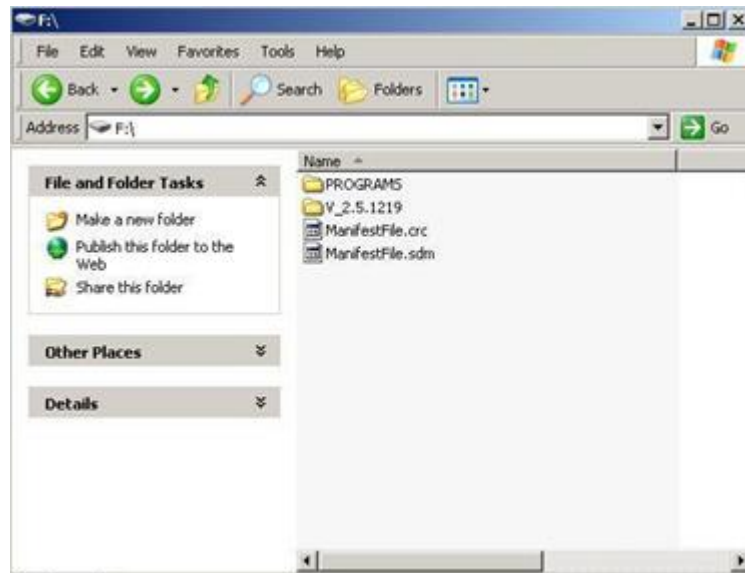
# Instructions for Updating Software

## GreenStar™ Displays and System Components

4. Open the Drive Letter your memory card is currently plugged into.



5. There will be multiple files/folders listed on the page. Record the full name of the folder whose name begins with “V” followed by a series of numbers.



NOTE: This number should match the version of software currently in LiveUpdate from Section B, Step 3. This number should also be greater than the current version of software currently in the display. Refer to Section G, Step 1 for further information.

