

Interpersonal Acceptance



International Society For Interpersonal Acceptance-Rejection (ISIPAR)



Inside this Issue

Editor: Fauzia Naz, PhD
Executive Editor: Ronald P. Rohner, PhD

1. Results of the 2021 election of officers and regional representatives..... 2
2. Artemis Giotsa’s review of Abdul Khaleque’s new textbook "Parenting and Child Development Across Ethnicity and Culture“ 10
3. Photo of Geneva, New York, site of ISIPAR’s 2022 meeting..... 18
4. The call for papers for the 2022 ISIPAR Congress. The ending date for early registration, March 31, 2022..... 19
5. IPARTheory’s Global Reach Continues to Expand..... 20
6. Photographic image of Sofia, Bulgaria, site of the 2024 ISIPAR meetings..... 21

**INTERNATIONAL SOCIETY FOR INTERPERSONAL
ACCEPTANCE AND REJECTION**



**Results of Election of Officers and
Regional Representatives**

2021

Results of Election of Officers and Regional Representatives 2021

President-Elect:

VINCENZO PAOLO SENESE

Caserta, Italy

incenzopaolo.senese@unicampania.it



Vincenzo Paolo Senese, PhD., is Associate Professor of Psychometrics in the Department of Psychology, University of Campania “Luigi Vanvitelli”, Italy. He is the head of the Psychometric Laboratory of the University of Campania. His main research interests are on the application of measurement models in the development of tests and questionnaires, with a special attention to the cross-cultural invariance, and on the evaluation of the effect of remembrances of acceptance-rejection during childhood and implicit and automatic processes on parental behavior. He has several international collaborations, he has participated in externally-funded and academic funded projects, published in national and international peer-reviewed scientific journals, and served as editorial member or referee for national and international peer-reviewed scientific journals.

Results of Election of Officers and Regional Representatives 2021

SECRETARY-TREASURER

SUMBLEEN ALI

Oneonta, New York, The United States

Sumbleen.Ali@uconn.edu



Sumbleen Ali, PhD. is an Assistant Professor in the Department of Human Ecology at the State University of New York, Oneonta. Her work and academic training are centered on investigating the developmental outcomes of interpersonal relationships from a behavioral as well as a neuropsychological perspective. Guided by IPARTheory, her research with children, adolescents, and adults examines how various social contexts (e.g., families and peers) and individual characteristics (e.g., ethnic-racial, gender, and cultural orientations) influence psychological adjustment, emotion regulation, cognitive decline later in life, and brain functioning using fMRI. The overarching goal of her research is to promote optimal human development and enhance family functioning across cultures and generations.

Results of Election of Officers and Regional Representatives 2021

REGIONAL REPRESENTATIVE FOR MEXICO, CENTRAL AMERICA, AND THE CARIBBEAN

ROBERTO L. ABREU

rabreu26@ufl.edu



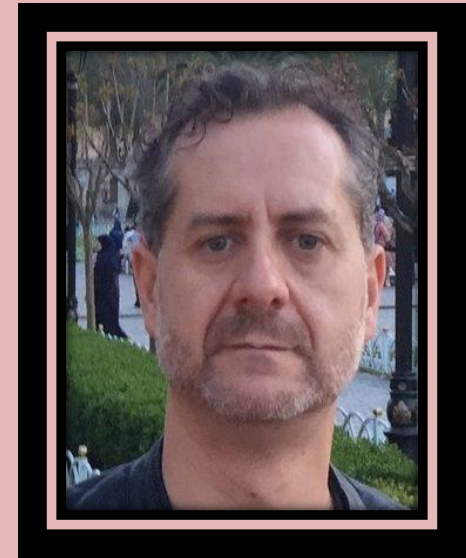
Roberto L. Abreu, PhD., (he/him/his/él) is an Assistant Professor of Counseling Psychology and Director of the [Collective Healing and Empowering VoicEs through Research and Engagement \(¡Chévere!\)](#) in the Department of Psychology at the University of Florida (UF). He is also an affiliate faculty in the Center for Gender, Sexualities and Women's Studies Research and the Center for Latin American Studies at UF. Roberto's research explores ways in which marginalized communities resist systemic oppression and promote *bienestar colectivo* (collective well-being), with a particular focus on Latinx families and communities, lesbian, gay, bisexual, transgender, and queer (LGBTQ) individuals, and the intersection of Latinx and LGBTQ people and their families and communities.

Results of Election of Officers and Regional Representatives 2021

REGIONAL REPRESENTATIVE FOR EUROPE

MIGUEL ANGEL CARRASCO

macarrasco@psi.uned.es



Miguel A. Carrasco, PhD., is Director of the Clinical Psychological Center in the Faculty of Psychology at the National University of Distance Education (UNED) in Madrid, Spain. He is also Full Professor of clinical psychological assessment. In addition, he is a member of both the International Society for Interpersonal Acceptance and Rejection and the European Association of Psychological Assessment. His research interests focus on parenting behavior, children's psychological problems (mainly aggression and depression), and clinical assessment, especially in children and adolescents. More information about his research background is provided on his [website](#).

Results of Election of Officers and Regional Representatives 2021

REGIONAL REPRESENTATIVE FOR SOUTH ASIA

SADIQ HUSSAIN

sadiq.hussain@kiu.edu.pk



Sadiq Hussain, PhD. earned his degree in Clinical Psychology from the Institute of Clinical Psychology, University of Karachi, Pakistan. His PhD research was on IPARTheory. He is an Associate Professor (Tenured) and Department Head in the Department of Behavioral Sciences, Karakoram International University (KIU) Gilgit. His research interests focus on IPARTheory, mental health, parenting, socialization, and policy studies. He is currently an elected member of KIU Senate and Vice President (Gilgit-Baltistan) of the Pakistan Psychological Association.

Results of Election of Officers and Regional Representatives 2021

REGIONAL REPRESENTATIVE FOR NORTH AMERICA

JENNIFER E. LANSFORD

lansford@duke.edu



Jennifer E. Lansford, PhD. is a Research Professor, Center for Child and Family Policy, Sanford School of Public Policy, Duke University, North Carolina. Her research focuses on understanding how cultural contexts moderate the influence of parents on trajectories of social and behavioral development from childhood to adulthood. She leads the Parenting Across Cultures Project, an NICHD-funded ongoing prospective study of parents and their children from 13 cultural groups in 9 countries (China, Colombia, Italy, Jordan, Kenya, Philippines, Sweden, Thailand, and the United States) that has investigated how acceptance and rejection are related to cultural norms and to other aspects of parenting and adjustment during childhood and adolescence.

Results of Election of Officers and Regional Representatives 2021

REGIONAL REPRESENTATIVE FOR EAST ASIA

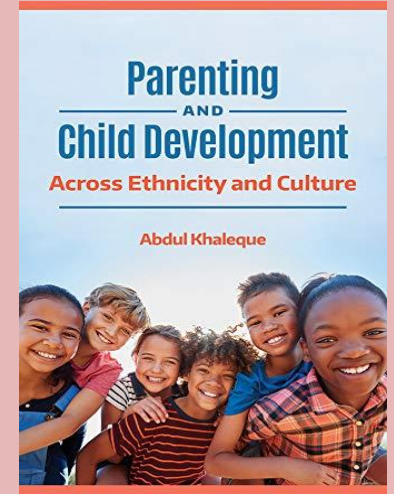
XUAN LI
**NYU-ECNU Institute for Social
Development at NYU Shanghai**
xuanli@nyu.edu



Xuan Li, PhD. is an Assistant Professor of Psychology at NYU Shanghai and an affiliated faculty member of the Department of Applied Psychology, Steinhardt School of Education, New York University. Her research focuses on fatherhood, parent-child interactions and relationships, and children and adolescents' socioemotional development in Chinese societies, with a Ph.D. dissertation on paternal warmth expression in urban and rural Chinese families. She is also broadly interested in interpersonal acceptance-rejection in various relational contexts, such as romantic relationships, friendships, and peer relationships. Having been a member of ISIPAR since 2011, she acted as a student advisory board member from 2012 to 2015. Xuan is enthusiastic about assisting East Asian students and scholars who are interested in researching interpersonal acceptance-rejection and serving the broader ISIPAR community.

Parenting and Child Development Across Ethnicity and Culture

Abdul Khaleque (2021)



Reviewed by

Artemis Z. Giotsa

University of Ioannina, Greece

Email: agiotsa@gmail.com

Why do people want or not want to become a parent? What happens to a couple's relationship after the birth of a child? What are people's responsibilities as parents? How does parenting affect children's personality, behavior, and psychological adjustment? These and other such questions are examined by Abdul Khaleque, who addresses the following topics in six Parts and 20 chapters: Fundamentals of parent-child relationships, theoretical perspectives on parenting, parenting in different cultural contexts, positive and negative parenting behaviors, changing patterns of parenting from infancy through adolescence, and parenting in different family patterns.

This is a research-based textbook that fills the need for a contemporary analysis of parent-child relationships. It discusses children's experiences with their parents in Asia, Africa, Europe, North America, and South America. And it explores different parenting styles among different family types. The book provides an excellent guide for learning about different styles of parenting throughout the world. Perhaps most importantly for members of the International Society of Interpersonal Acceptance and Rejection is the fact that it is the first of its kind to discuss interpersonal acceptance-rejection theory (IPARTheory) and evidence at length.

The book is clearly structured and well-written in simple language. Each of the six Parts of the book has the same structure. Theoretical and empirical findings followed by a Chapter Summary and Reflection Questions help readers understand and explore central topics described in each chapter. In **Part 1** (Chapters 1-3), Khaleque introduces the concepts of parenting, co-parenting, and grand parenting. Parental techniques for dealing with children's disobedience and non-compliance are also described.

Additionally, Chapter 1 describes the effects of positive and negative parenting on child development. Chapter 2 discusses parenting education programs for effective parenting, and it compares different styles of communication between parents and children. Different parenting programs are described that focus on reflective listening and expressive communication. Chapter 3 focuses on child development topics such as physical, psychological, and social development in different cultural contexts.

Part 2 contains Chapters 4-9. In Chapter 4, Khaleque addresses theoretical perspectives on parenting, including evolutionary approaches to human development and an historical approach of human evolution. In Chapter 5, he discusses psychosocial theories and approaches to human development such as Freud's, Erikson's, and Maslow's theories. Chapter 6 continues with an analysis of the cognitive and social cognitive approaches of Piaget and Vygotsky. Attachment theory and associated measures are described in Chapter 7.

Chapter 8 analyses Rohner's IPARTheory in depth. According to Rohner, ***“Parental love is the single most important factor in a child's life”*** (Rohner, 2021).

For more than 60 years IPARTheory has focused on parent-child relationships, intimate adult relationships, and relationships between different members of the family such as siblings, grandparents, and other significant persons throughout the lifespan. Khaleque also shared his own research on IPARTheory in different countries. This chapter clearly described why IPARTheory is such a fruitful source for explaining multiple social phenomena and for proposing applied recommendations. IPARTheory is not only a theory, but it is also a scientific community linking people in different countries and multiple contexts. It encompasses different cultures, ethnicities, and generations of scholars and practitioners.

Part 2 concludes with Chapter 9 which presents Bronfenbrenner's approach, as well as Super and Harkness's developmental-niche model that focuses on the importance of culture in human development.

Part 3 contains two chapters (Chapters 10 and 11), which present findings from parenting in different cultures, and from American minority groups. In Chapter 10, Khaleque makes comparisons across groups, and finds similarities and differences among them. Chapter 11 discusses basic differences in parenting between collectivistic and individualistic cultures.

Part 4 contains chapters 12 and 13. Chapter 12 addresses issues of positive parenting and the effects of maternal and paternal love on sons' and daughters' personality development, behavioral functioning, and psychological adjustment. Chapter 13 describes different forms of abusive behavior and child maltreatment. It also focuses on the effects of these behaviors on children's mental health.

Part 5 contains chapters 14 through 16. Chapter 14 broadens the text by noting changes in patterns of parenting from infancy through toddlerhood. Chapter 15 describes changes in patterns of parenting from early childhood into middle childhood. Chapter 16 notes these changes through the period of adolescence.

These chapters contain useful tips for effective communication with offspring at different ages.

In **Part 6**, the last part of the book, Khaleque goes further by analyzing parenting in diverse family patterns, especially in vulnerable families such as fragile families (Chapter 17), high risk families (Chapter 18), families with children with special needs (Chapter 19), and families with diverse life styles such as dual career, dual earner, cohabitating, and same-sex families (Chapter 20). After many years of research in the field of interpersonal relationships, Khaleque has succeeded in producing a rich textbook with plenty of theoretical information, findings, and techniques covering many decades of study in the field of parent-child relations. Readers will also find tools and techniques for measuring intimate relationships, and strategies to use to intervene in cases of relationship problems.

This textbook is an important source for undergraduate students, but it is also useful to graduate students and faculty from fields such as psychology, psychiatry, family studies, sociology, schools of education, and others.

In applied fields, the book will be useful to psychologists, counselors, teachers, sociologists, and professionals who work with vulnerable populations suffering from violence and maltreatment.

In conclusion, I highly recommend *Parenting and Child Development: Across Ethnicity and Culture* to be read by students and interdisciplinary professionals. The book motivates the reader to conduct further research and to promote applied interventions in the field of parent-child relationships and development. After reading the book many of us might think *“If I had my child to raise all over again, I would do less correcting and more connecting, more hugging and less tugging”* (Loomans, 1996, p.3). We should always have in mind the fact that *“Family makes you who you are and who you aren’t”* (Hardy, 2021, p.170).



Photo Credit: Xuan Li

References

Hardy, M. (2021). *www.goodquotesweb.wordpress.com*. Retrieved 1/11/2021

Khaleque, A. (2021). *Parenting and child development: Across ethnicity and culture*. Praeger.

Loomans, D. (1996). If I had my child to raise over again. *Special Delivery*, 19(3), 7.

Rohner, R. P. (2021). Introduction to interpersonal acceptance-rejection theory (IPARTheory) and evidence. *Online Readings in Psychology and Culture*, 6(1)<https://doi.org/10.9707/2307-0919.1055>



Photo credit: Google Images

Special
ANNOUNCEMENT

9th International Congress on Interpersonal Acceptance and Rejection

Geneva, New York, U.S.A.

Site of ISIPAR's 2022 Biennial Meeting



Photo credit: Google Images

NOTICE

In order to attend the International Congress of Interpersonal Acceptance-Rejection in person, you must provide proof of COVID vaccination or documentation of a formal medical exemption from the vaccine. You will be required to upload documentation of your vaccine (or exemption) when you register for the conference.

We also **STRONGLY** suggest that each attendee obtain a negative COVID test no more than 72 hours before the Congress begins, but because of the timing of those tests needing to occur so closely to the time of the Congress, we will not be requiring/collecting proof of a negative test.

[Note: Attendees traveling internationally to attend the conference will be required by the US government to be fully vaccinated to travel to the USA. Please ensure you check any other COVID-related requirements for your travel to the conference].

9th International Congress on Interpersonal Acceptance and Rejection

ICIAR 2022
Geneva, New York

The deadline for the submission of symposia, papers, and posters is **Friday, February 18, 2022.**

Early Registration begins **October 1, 2021**

Early Registration ends **March 31, 2022**

**CALL
FOR
PAPERS**

GENEVA, NEW YORK
June 15-18, 2022



ISIPAR members get a steep discount in Registration fee for the 9th International Congress on Interpersonal Acceptance-Rejection in New York
So, BECOME A MEMBER TODAY !

<https://www.iciar2022.com/>



designed by freepik.com

IPARTheory's Global Reach Continues to Expand

20,124 downloads from 1,366 Institutions in 153 countries



Scholar Works

Rohner, R. P. (2021) Introduction to Interpersonal Acceptance-Rejection Theory (IPARTheory) and Evidence. *Online Readings in Psychology and Culture*, 6(1). <https://doi.org/10.9707/2307-0919.1055>

SOFIA, BULGARIA



Site of ISIPAR's 2024 Biennial Meeting



Photo credit: Google Images