

Web'n'walk

Manager for Windows

USER MANUAL



T-Mobile

Content

- 03** | Introduction
- 04** | Hardware and Software Requirements
- 04** | Connecting Your Device to the Computer
- 05** | User Interface
- 05** | Selecting Network
- 06** | Connecting to the Internet
- 06** | Changing Application Settings
 - About
- 07** | Managing Profiles
 - Adding New Profile
 - Editing or Removing a Profile
 - Administrator Connection Profile Provisioning
- 08** | My Account
 - The information will appear in the application window
- 08** | Messages
- 09** | Updating the Application
- 10** | Abbreviations

Introduction

This application simplifies setup and establishment of Internet connection on your computer via mobile data transmission provided by LTE/3G/EDGE/GPRS services.

With this application, you do not have to spend time by installing the modem and configuring your connection. The software does everything for you. Just connect the device to your computer, or insert a suitable PCMCIA/ExpressCard card and launch the application installation package. It takes only a few moments to install the application and then you can immediately start using your Internet connection.

Requirements for Internet access via LTE/3G/EDGE/GPRS

- Phone or modem supporting LTE/3G/EDGE/GPRS data transmission, connected to your computer.
- Active LTE/3G/EDGE/GPRS service (this service can be activated through customer service).

The application supports majority of LTE/3G/EDGE/GPRS data devices sold. If your device cannot be installed, try to update the application to the latest version.

Hardware and Software Requirements

Minimum hardware configuration:

- Pentium class processor or better
- 64 MB RAM (128 MB recommended)
- 200 MB of disk space
- USB port (for connecting using a USB mobile device), or
PCMCIA type II slot (for connecting using a PC Card mobile device), or
ExpressCard slot (for connecting using an ExpressCard mobile device)

Supported operating systems:

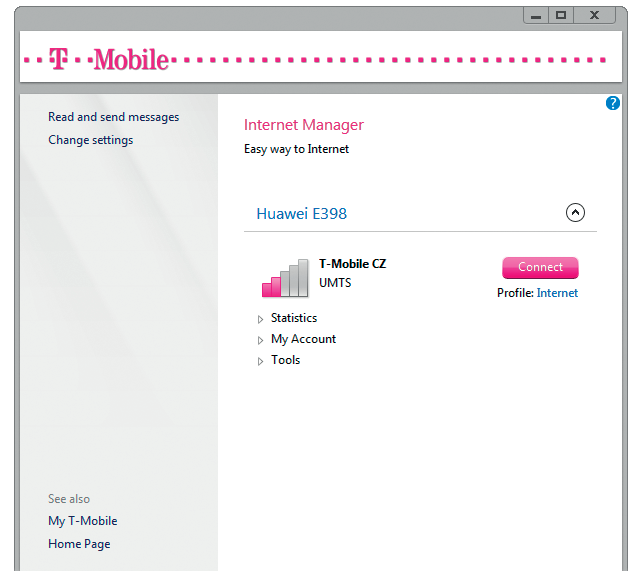
- Microsoft Windows 8.1
- Microsoft Windows 8
- Microsoft Windows 7
- Microsoft Windows Vista
- Microsoft Windows XP SP3

Both 32-bit (x86) and 64-bit (x64) versions of the above operating systems are supported.

Connecting Your Device to the Computer

Before you can connect to the Internet, you must plug in or connect your device to the computer.

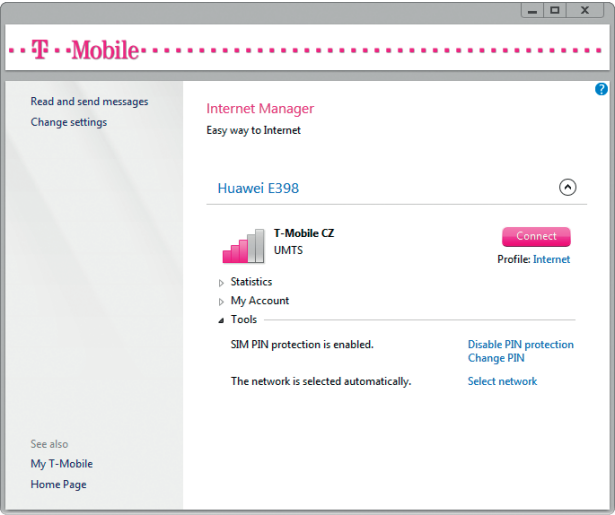
1. Install the application with the supplied drivers.
2. Plug in your device and wait until the application detects it.
3. Only when the application doesn't detect your device, try to install software that came with your USB mobile device and wait again until the application detects it. Use the cable recommended by the device manufacturer for Internet connection. If you intend to use a third party cable, make sure that the cable is suitable for Internet connection.



User Interface

By default, the application starts automatically with Windows. To bring up the main window of the application, double-click its icon in the taskbar notification area.

Main Window Controls



Devices

The list displays the currently available devices that can be used to connect to the Internet. The application allows you to have multiple devices connected simultaneously.

For each device you can:

- see Statistics of transferred data
- use related Network Services provided by your mobile operator
- use Tools like Network selection or PIN management

Messages

Click the Read and send messages link in upper left part of application window to enter messaging client.

Settings

Click the Change settings link in upper left part of application window.

See also

In lower left part of application windows there are links to favorite internet services provided by your mobile operator.

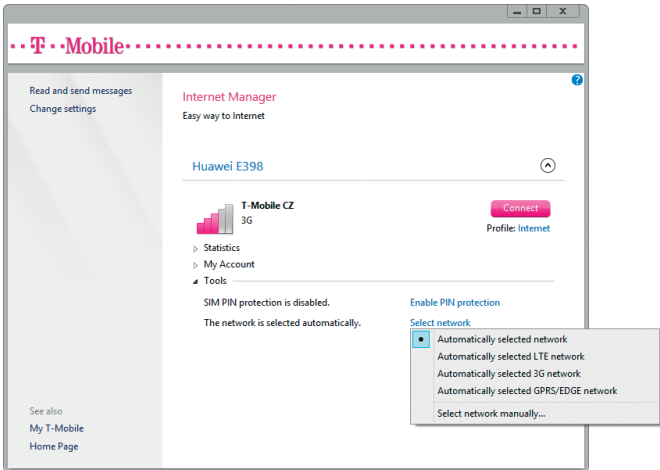
Close the application window by clicking the X button in the top-right corner. To open the window again, double-click the application icon in the taskbar notification area.

To exit the application, right-click the application icon in the taskbar notification area, and select Exit.

Selecting Network

For users of modems and cards, the application offers control over the type of mobile network and technology that will be used. Users have the ability to select the network automatically or manually.

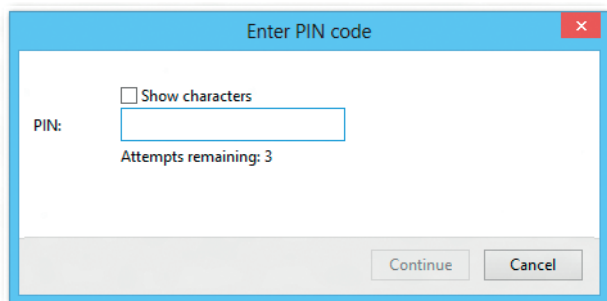
1. Open Tools section of the relevant device.
2. Click Select Network link.
3. Choose network mode.



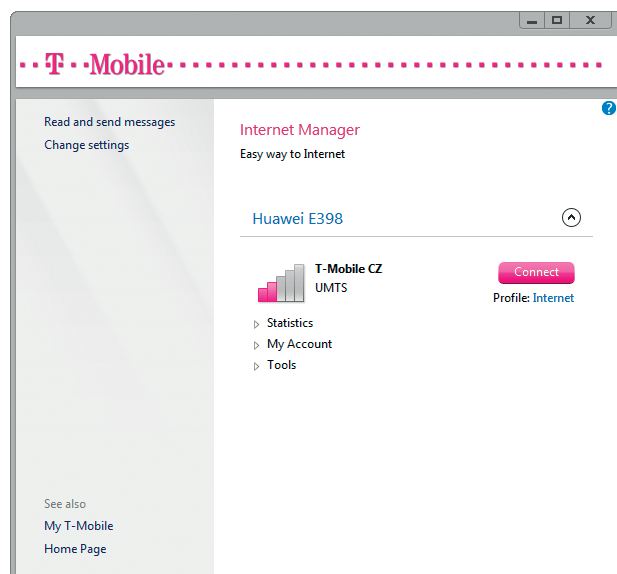
Connecting to the Internet

To connect to the Internet, at least one LTE/3G/EDGE/GPRS device must be installed.

1. Make sure that the device you want to use is correctly connected to the computer.
2. Enter SIM card PIN if required.



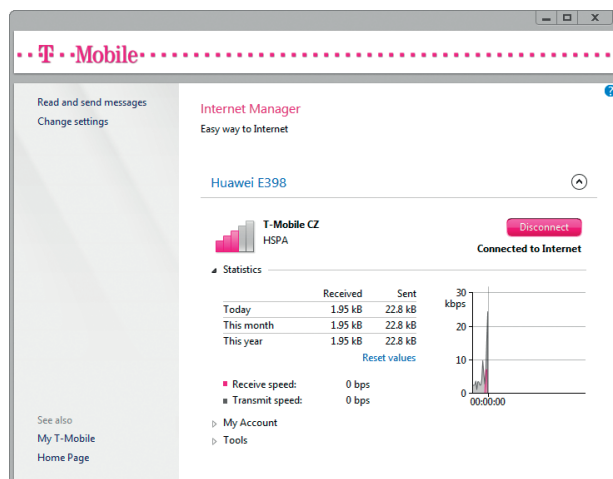
3. Press the Connect button and wait until connection is established.



If you have set up multiple Profiles defined, please choose profile below the Connect button.

Note:

It is possible to deactivate or activate PIN protection in Tools of the relevant device. Once the connection is established, check Statistics for details.



You can check the current transmission speed on a graphical meter.

The following information is available during active connection:

- Current transmission speed
- Total amount of data sent and received during various periods

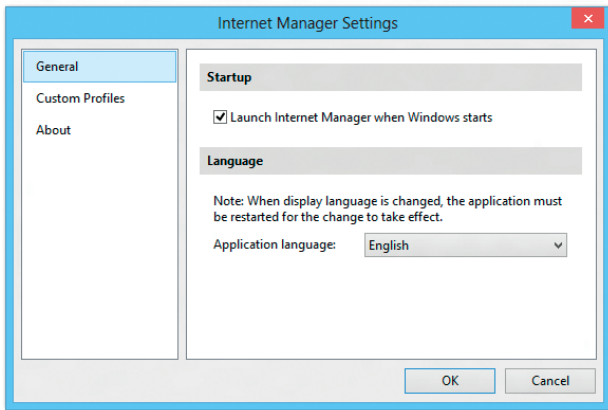
To terminate the connection, click Disconnect button.

Changing Application Settings

To change application settings click the Change settings link in the main window.

General

Launch the application when Windows starts
This option determines whether the application will automatically start with Windows. It is recommended to leave this option checked.



Application language

This option is used to change the language of the application. An initial language setting is auto detected.

About

Display version of the application. Application will also check for new versions. When new version of the application is found, the application will upgrade to the new version.

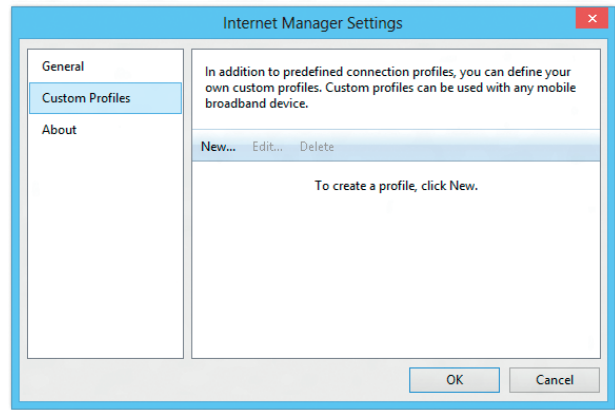
Note: The computer must be connected to the Internet during the check for updates.

Managing Profiles

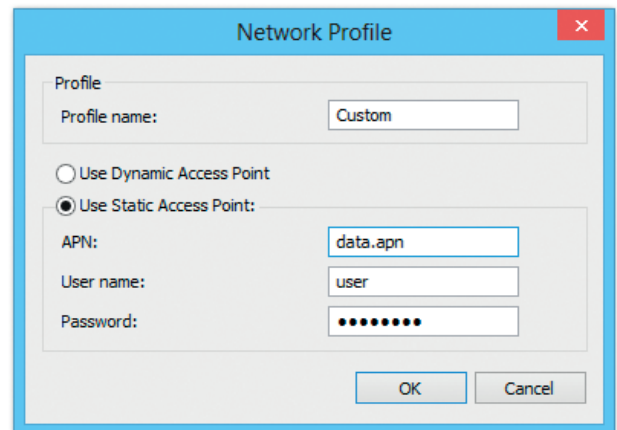
If you want to use a different than the default APN in the application (applies mainly to business customers with their own APN), follow these steps.

Adding New Profile

1. In the main window, click the Change settings link.
2. Select Custom Profiles.
3. Click New.



4. Enter the required connection details. If you are not sure about the details, contact your administrator or another person who can provide you with the information about you profile settings.



Editing or Removing a Profile

1. In the main window, click the Change settings link.
2. Select Custom Profiles.
3. Click Edit or Delete accordingly.

Administrator Connection Profile Provisioning

Administrators can provision computers with read-only connection profiles by creating an environment variable for each profile. The variables are named according to the following structure:

„MBCP“ + MCC + MNC of SIM card home provider

Note: If you need to create more than one connection profile for the same provider, append an arbitrary suffix to the name to differentiate the variables.

The value of each environment variable is the Access Point Name (APN) which the connection profile represents.

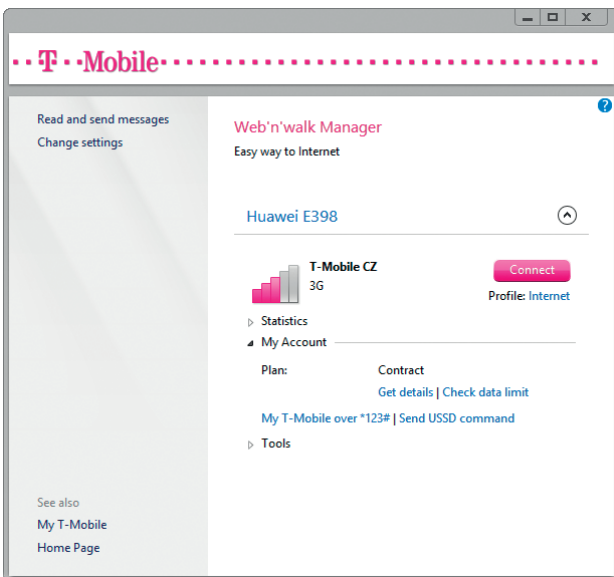
The following example defines two connection profiles for the operator whose MCC is „230“ and MNC is „01“.

MBCP23001=apn1

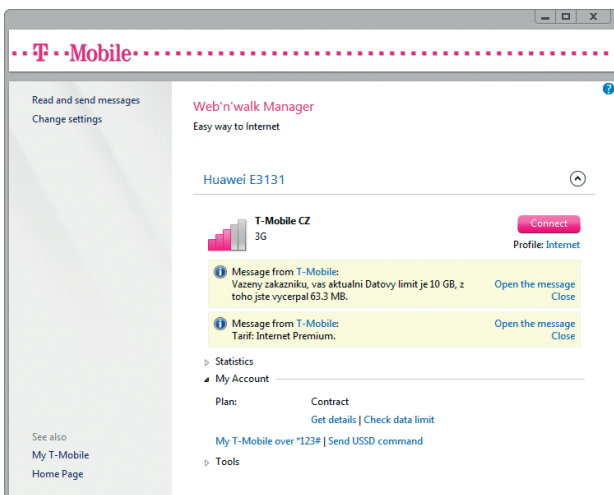
MBCP23001A=apn2

My Account

My account section gives you a thorough overview of the current status of your account. You can open it by clicking on either [Get details](#) or [Check data limit](#) options.



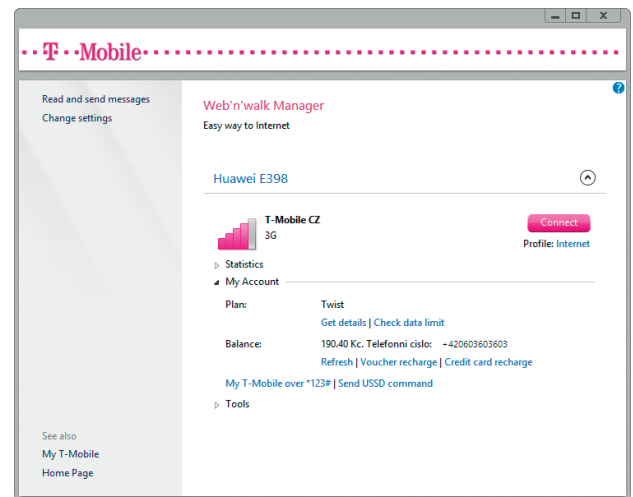
The information will appear in the application window.



Pre-paid card

The customer with a pre-paid card will see a general overview of the credit status, transferred data flow, data limit validity and other details here.

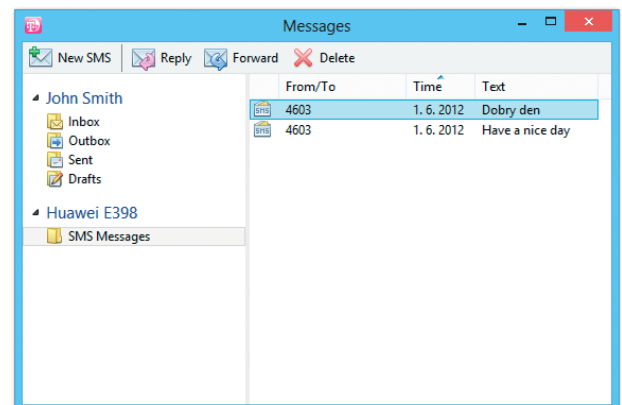
The application also allows you to top-up your credit by a simple click on [Voucher recharge](#) option.



For the voucher recharge operation enter your secret code into the form. You will be informed about the successful top-upping via an SMS message.

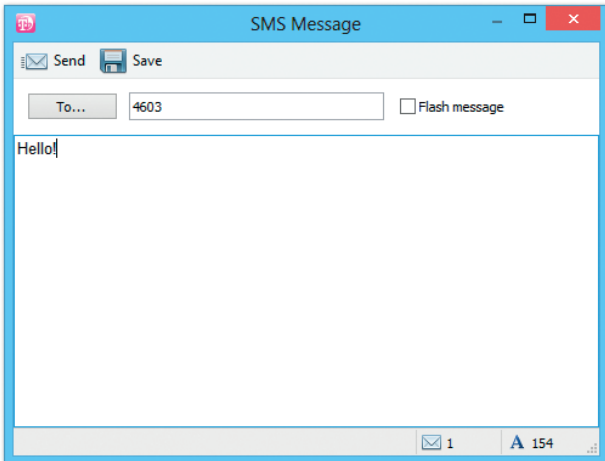
Messages

The application allows you to send and receive SMS.



Received messages are stored in SMS Messages folder of your device. Use drag and drop to move messages to your personal folders to free your device memory.

To send SMS click New SMS, enter your message text and type or select recipients.



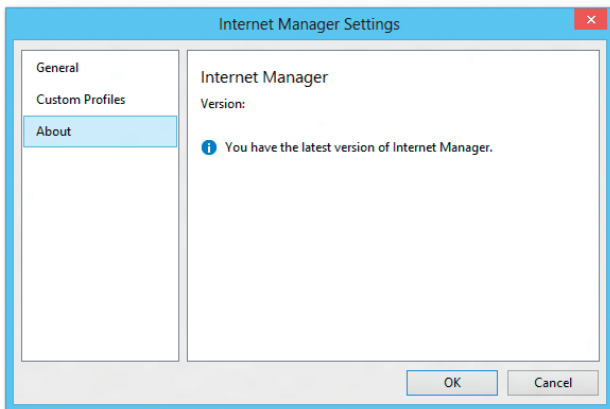
Concatenated message including national characters are supported.

Updating the Application

The application will automatically check for newer versions and install them.

To check for updates manually, follow these steps:

1. Click the Change settings link in the main window.
2. Select About.



3. Current version of the application will be displayed and updates will be automatically installed if there is a newer version of the application available.



Abbreviations

Zkratka	Úplný výraz	Význam, překlad
3G	Third Generation	Technology of fast mobile data transmission
APN	Access Point Name	Access point name
CD	Compact Disk	Digital data storage medium
EDGE	Enhanced Data Rates for GSM Evolution	Technology of fast mobile data transmission
GPRS	General Packet Radio Service	Technology of fast mobile data transmission
GSM	Global System for Mobile Communications	Mobile phone network
LTE	Long Term Evolution	Technology of fast mobile data transmission
PC	Personal Computer	Personal computer
SMS	Short Message Service	Short text message service
USB	Universal Serial Bus	A bus for communication between devices