

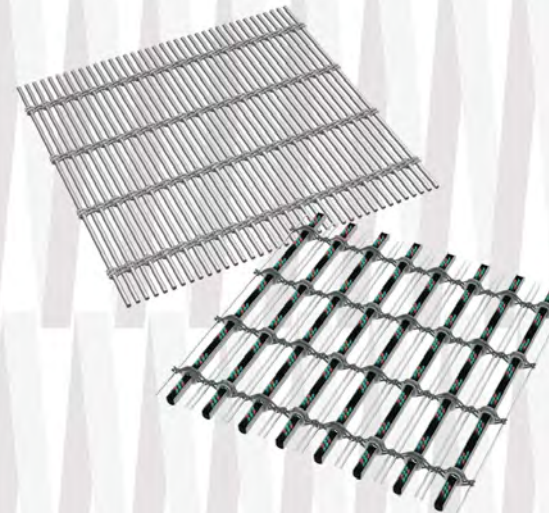


METALFABRICS



INTERWEAVING  
EXCELLENCE  
FROM CONCEPT  
TO COMPLETION

GKD METAL FABRICS PRODUCES TECHNOLOGICALLY ADVANCED WOVEN METAL FABRIC SOLUTIONS FROM CONCEPT TO COMPLETION. WITH A BROAD SPECTRUM OF FABRIC DESIGN, THICKNESS, WEIGHT, RIGIDITY, WIDTH AND TRANSPARENCY, GKD METAL FABRICS ARE SUITABLE FOR DIVERSE INTERIOR AND EXTERIOR ARCHITECTURAL APPLICATIONS, AND CAN HELP PUSH YOUR DESIGN TO EXTRAORDINARY HEIGHTS.



HISTORY	6
APPLICATIONS	8
CEILINGS	10
COLORS & ETCHED SURFACES	12
FAÇADES	14
MEDIAMESH	16
PARKING FAÇADES	18
SAFETY & SECURITY	20
SUNSHADE	22
INTERIOR SURFACES	24
PRODUCTS	26
RIGID FABRICS	28
FLEXIBLE CABLE FABRICS	30
HELIX & ESCALE FABRICS	32
MEDIAMESH FABRICS	34
ATTACHMENT SYSTEMS	36
TENSIONED	38
FRAMED	40
SERVICES	42
SUSTAINABILITY	44
MAINTENANCE	46

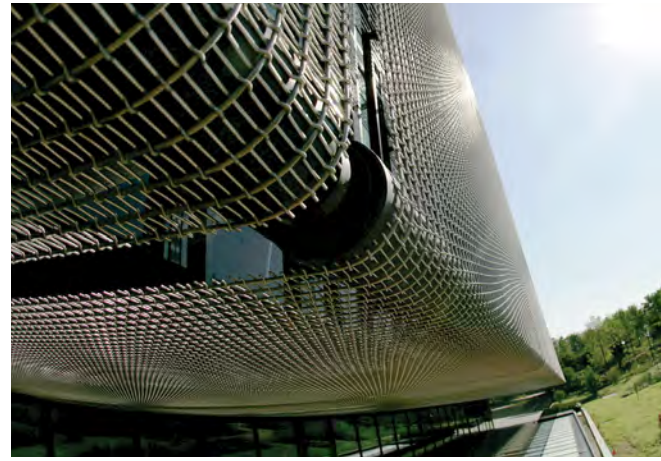
# INDUSTRY PIONEERS WITH AN EYE ON THE FUTURE

In 1925, a group of German engineers created what would evolve into the most technically advanced weaving mill of metal fabrics for filtration and industrial use in the world. As the company grew, its metal fabric line evolved and revolutionized how architectural structures are enhanced aesthetically, augmented functionally and optimized economically. Today, drawing on more than 90 years of experience, GKD Metal Fabrics' engineers continue to push the envelope of innovation - creating greater opportunities for distinction and customization in design. GKD Metal Fabrics is headquartered in Cambridge, Maryland, USA.



# VERSATILITY THAT MEETS YOUR NEEDS

GKD woven metal fabrics are exceptionally versatile, providing technical, aesthetic and environmentally responsible solutions for an array of interior and exterior applications, including: Ceilings, Etched Graphics, Architectural and Parking Façades, Safety and Security, Sunshade, Column Covers, MediaMesh, Partitions, and Specialties. Time and again, GKD Metal Fabrics' unparalleled commitment to customization and versatility enable architects to achieve revolutionary results.



# CEILING

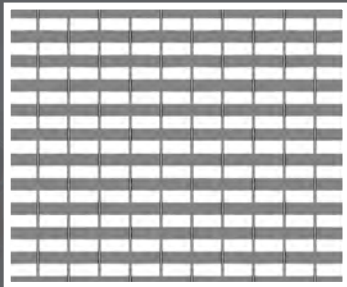
Beyond the aesthetic is unparalleled overhead functionality. GKD metal fabrics effectively hide wiring, plumbing, ductwork, mechanicals and support structures with style and elegance. Plus, they're fireproof, extremely durable and allow for the free flow of air and sprinkler system water.

## COMMERCIAL GROUP

Fabric: Atlantic

Architect: Commercial Group/GKD

Location: Baltimore, MD



# COLORS & ETCHED SURFACES

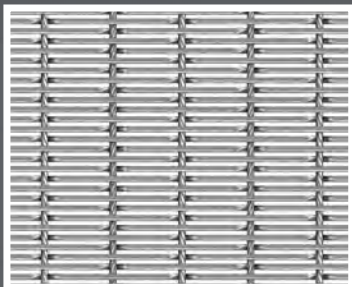
Using our flat surfaced stainless steel Omega design, we etch digitally created graphics onto the metal mesh to create a highly contrasted image that brings the "subject" to life. Graphics include text, logos and all sorts of imagery. The vibrancy of the design is controlled by the duration of the etching and the material used. The etching is non-toxic and maintenance friendly.

## RALLYE BMW

**Fabric:** Omega 1510

**Architect:** HLW International, LLC

**Location:** Roslyn, NY



# FAÇADES

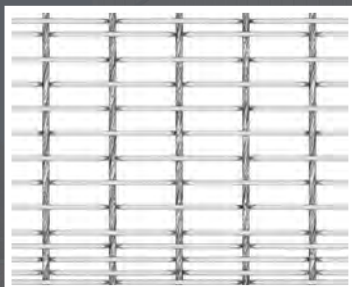
GKD metal fabric façades stylize a structure, by covering an old or visually unappealing building. Mechanicals are also removed from view. With unique and dynamic textures and patterns, our designs offer exceptional aesthetics in any light – sun, moon or artificial illumination. And with its durability and ease of maintenance, the transparent metal fabric lasts for many decades.

## ASFINAG

**Fabric:** Omega Divergence

**Architect:** Peter Lorenz

**Location:** Innsbruck, Austria





# MEDIAMESH®

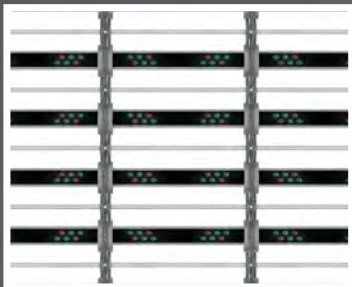
GKD Metal Fabrics' Mediamesh®, is a stainless steel wire mesh interwoven with LED lights that can transform any building into a dynamic, vivid experience of communication. Easily installed over any building surface, this mesh is ideal for large scale applications and can cover four times the surface area of traditional billboards with as much as 80% less electricity. And with up to 60% transparency, this mesh allows for natural daylighting and ventilation to reach the buildings surface.

## CLEVELAND INSTITUTE OF ART

Fabric: Mediamesh®

Customer: Cleveland Institute of Art

Location: Cleveland, Ohio



# PARKING FAÇADES

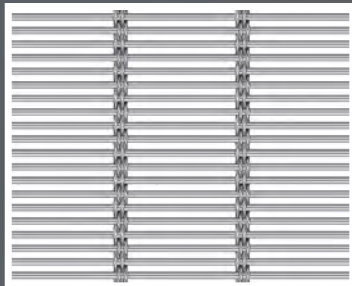
GKD Metal Fabrics developed the systems and hardware to incorporate stainless steel fabric into a parking structure to create an environment for vehicle security and visual appeal. Because of the material's transparent characteristic, no mechanical systems are required for ventilation – translating into energy and cost savings.

## VAN NUYS FLYAWAY PARKING GARAGE

Fabric: Lago

Architect: DMJM

Location: Los Angeles, CA



# SAFETY & SECURITY

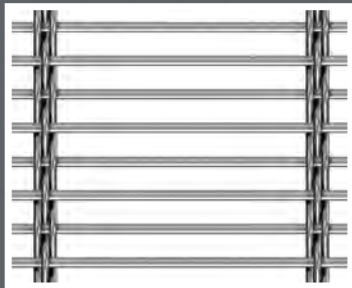
GKD Metal Fabrics for railings and balustrades take the concept of safety to a whole new level of design sophistication. Perfect for interior and exterior applications, it's no wonder so many stadiums, offices, schools, bridges, parks and transportation venues have chosen durable, functional, GKD Metal Fabrics.

## CHICAGO ART INSTITUTE

**Fabric:** Tigris PC

**Architect:** Renzo Piano

**Location:** Chicago, IL



# SUNSHADE

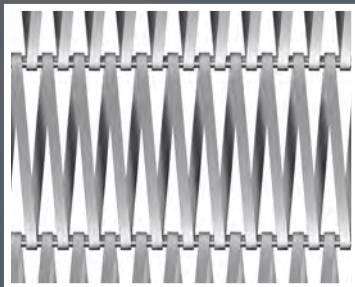
GKD Metal Fabrics' flexible weave helps achieve specific sunshade and daylighting goals for your project while providing a dazzling design element to any building's exterior. GKD offers analysis and specific quantifiable heat and light value for each project to achieve your target goals. Our environmental benefits also support LEED opportunities.

## UF RESEARCH & ACADEMICS CENTER

Fabric: Escale 7x1

Architect: HOK Architects

Location: Lake Nona, FL



# INTERIOR SURFACES

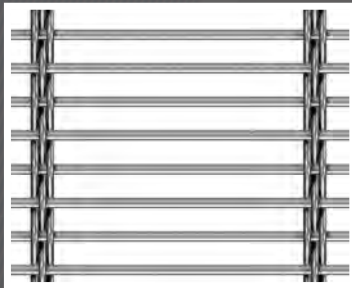
Metals are the ultimate wall covering, and column covering ideal to clad an interior or exterior surface. While always decorative, the durability and longevity factors make these woven metal coverings a first choice for high traffic environments. Surfaces are easily maintained and are washable.

**KAUFFMAN CENTER FOR THE PERFORMING ARTS**

**Fabric: Tigris PC**

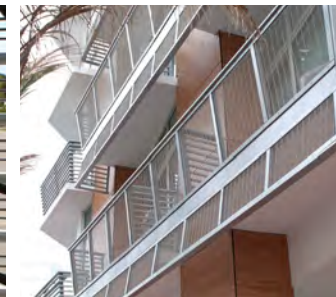
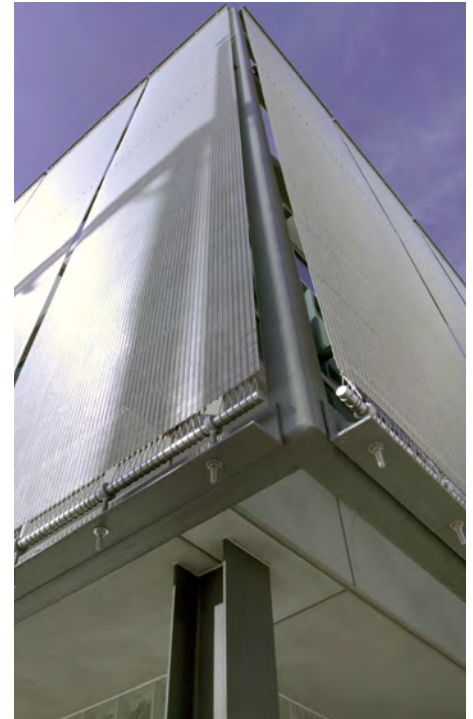
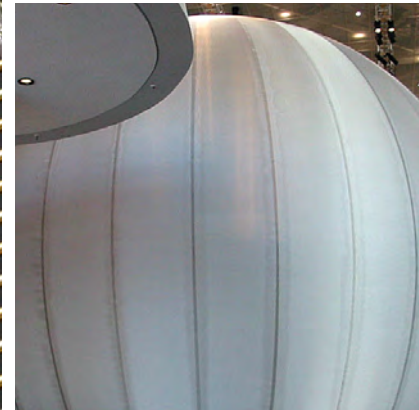
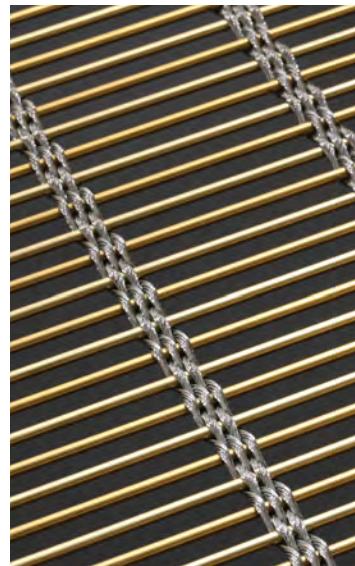
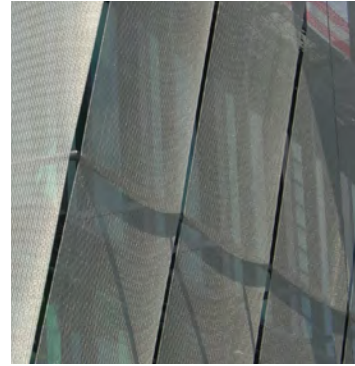
**Architect: Moshe Safdie Architects**

**Location: Kansas City MO**



# PROJECT SUCCESS BEGINS WITH SELECTING THE IDEAL SOLUTION

GKD Metal Fabrics employs highly trained sales representatives and offers a complete fabric swatch sample shipment program to ensure clients are well informed about the company's products and select the ideal solution for their design. Clients are encouraged to order swatches of GKD's metal fabrics in a made-to-order sample box containing the fabrics that interest them most, or in a signature sample box that contains the company's most popular weaves.



# RIGID FABRICS

Woven of solid wires in both the warp and weft directions for a stiff fabric in all directions. Rigid fabrics are typically transported flat. Please refer to [gkdmetailfabrics.com](http://gkdmetailfabrics.com) for a full list of metal fabric options.

**Fabric:** Capella

**Material:** AISI Type 316 SS

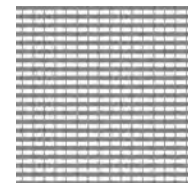
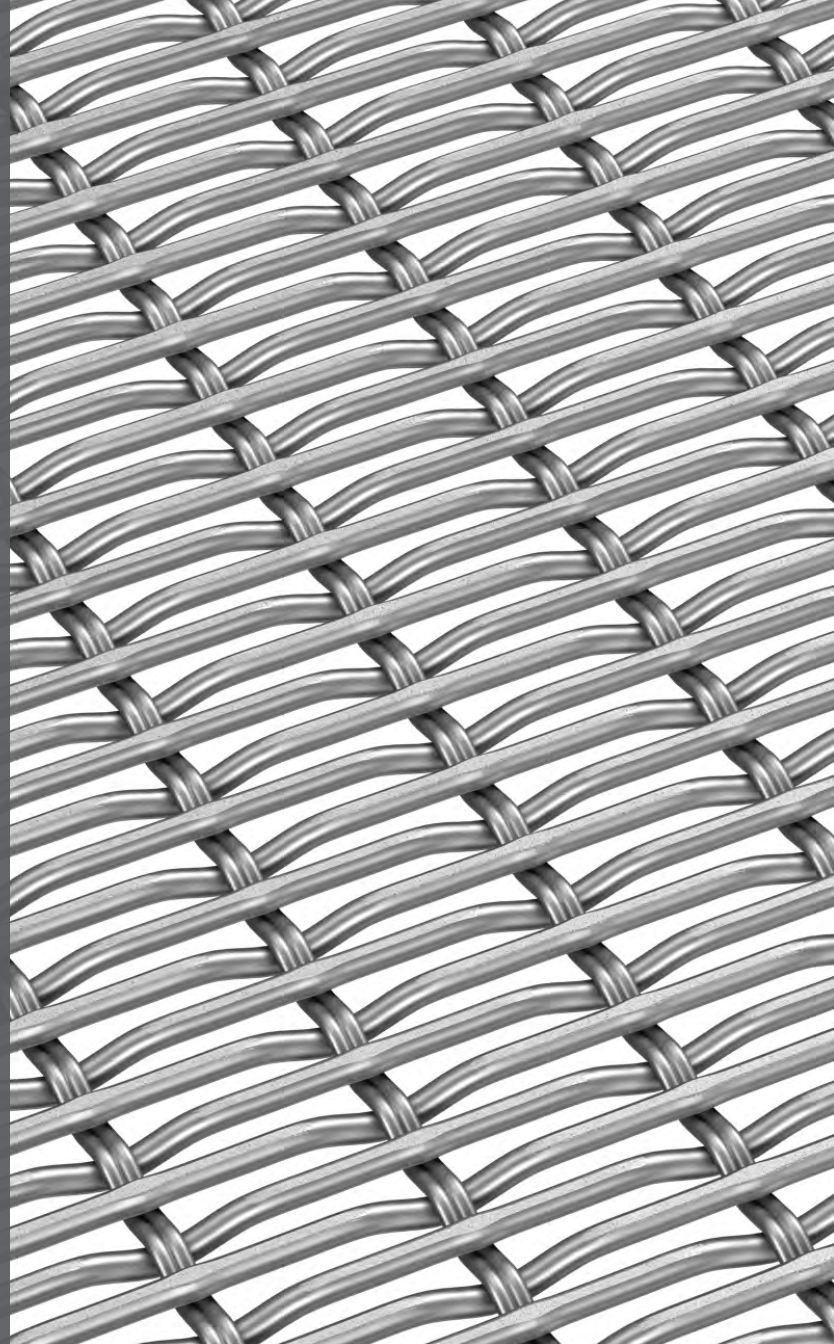
**Type:** Rigid

**Open Area:** 41%

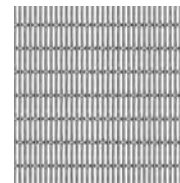
**Weight:** 1.57 lbs/sqft

**Max Width:** 18'

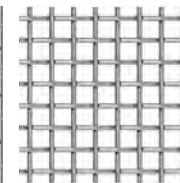
**Max Length:** 13'



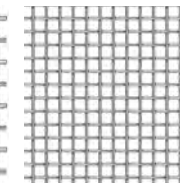
Atlantic



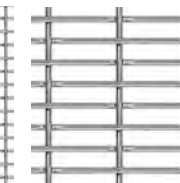
Capella



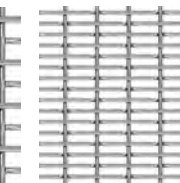
Delta 16



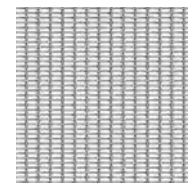
Delta 30



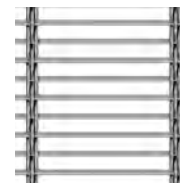
Ellipse 2



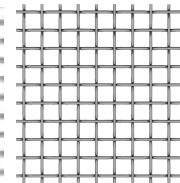
Ellipse 14



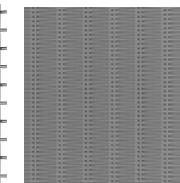
Ellipse 52



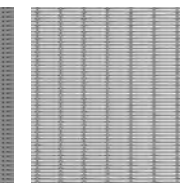
Futura 3110 PC



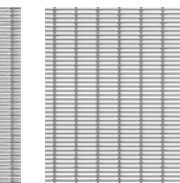
Tucana



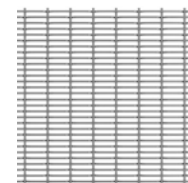
Omega 1500 PC



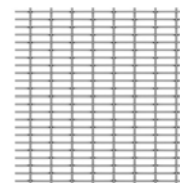
Omega 1510 PC



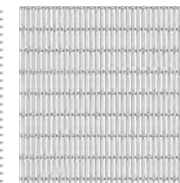
Omega 1520 PC



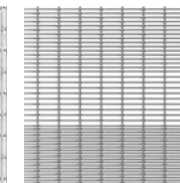
Omega 1530 PC



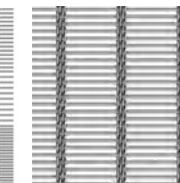
Omega 1550 PC



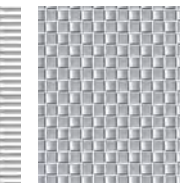
Omega 216



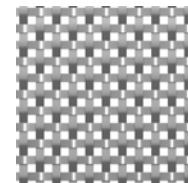
Omega Divergence PC



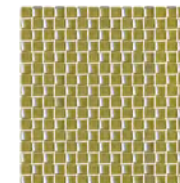
Sambesi PC



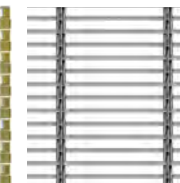
Square



Square 25



Square Bronze



Tigris PC

*As the international leader in technical metal weaving, our ability to design and produce custom weaves to meet aesthetic and technical requirements is unsurpassed. Let GKD design for you.*

# FLEXIBLE CABLE FABRICS

Flexible cable fabrics are woven of precision wire cable in the warp direction and a solid wire in the weft direction giving flexibility to the fabric in one direction. These fabrics can be transported in rolled form. Very strong in the length direction and very stable in the cross direction.

**Fabric:** Lago

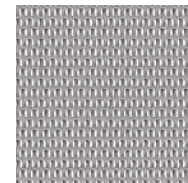
**Material:** AISI Type 316 SS

**Type:** Flexible, one direction

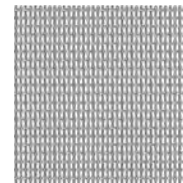
**Open Area:** 44%

**Weight:** 1.50 lbs/sqft

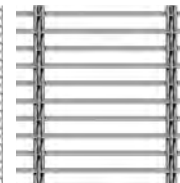
**Max Width:** 26'



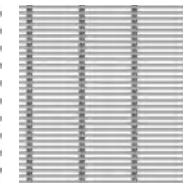
Baltic



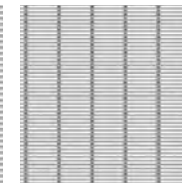
Dolphin



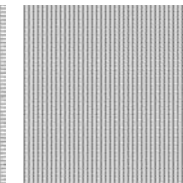
Futura 3110



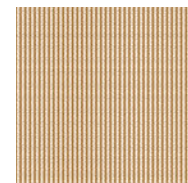
Lago



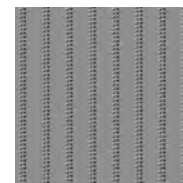
Lamelle



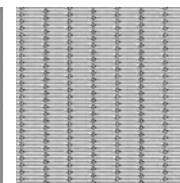
Kiwi



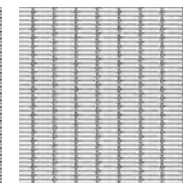
Mandarin



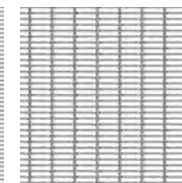
Omega 1500



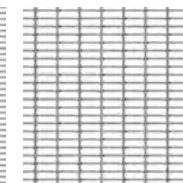
Omega 1510



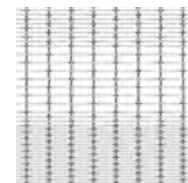
Omega 1520



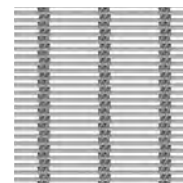
Omega 1530



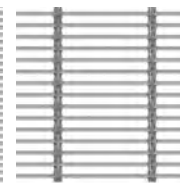
Omega 1550



Omega Divergence



Sambesi



Tigris

*As the international leader in technical metal weaving, our ability to design and produce custom weaves to meet aesthetic and technical requirements is unsurpassed. Let GKD design for you.*



# HELIX & ESCALE FABRICS

Helix metal fabrics are woven of alternating clockwise and counter-clockwise wound spirals made of flattened round wire and connected by a crimped connector wire. Typically a bead welded edge.

Escale metal fabrics are woven of alternating clockwise and counter-clockwise wound spirals made of flattened strip and connected by a large straight rod connector. Typically a ladder loop edge.

Both types hinge around the connector allowing for flexibility in the length direction. These fabrics are usually transported in roll form. Very strong in the length direction.

**Fabric:** Helix 24

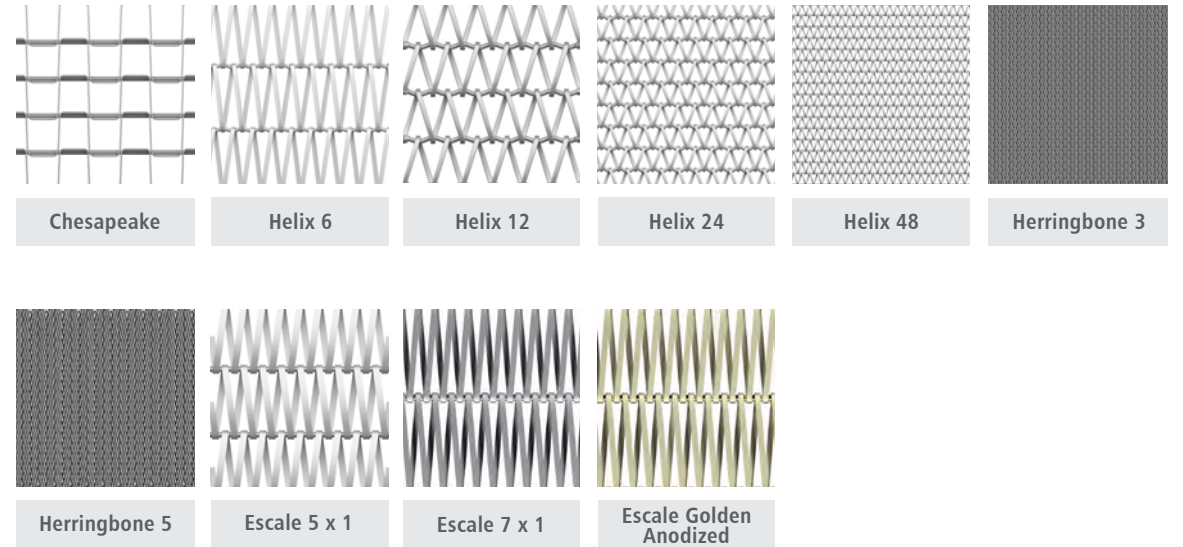
**Material:** AISI Type 316 SS

**Type:** Flexible, one direction

**Open Area:** 56%

**Weight:** 1.32 lbs/sqft

**Max Width:** 20'

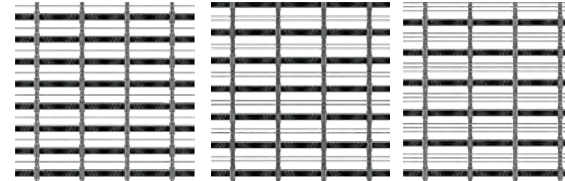
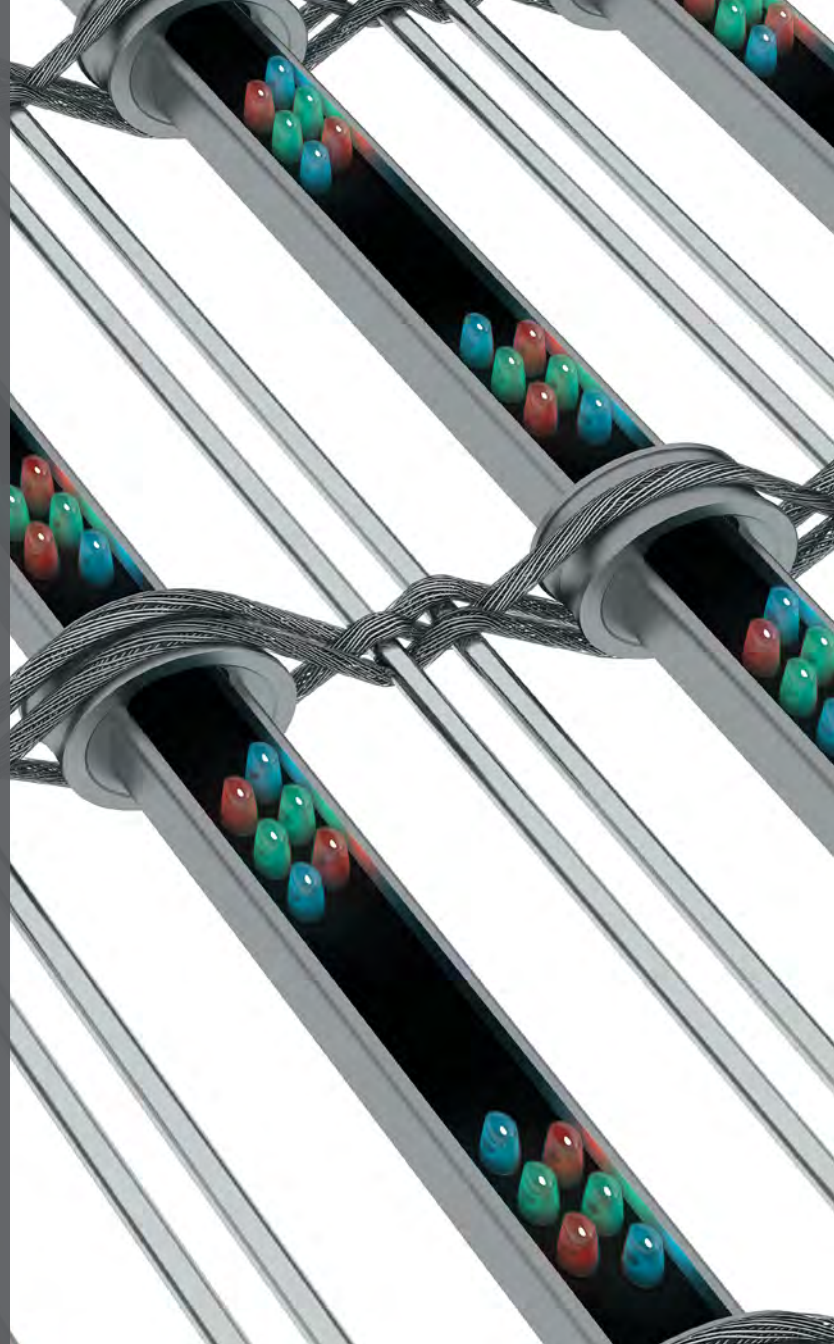


*As the international leader in technical metal weaving, our ability to design and produce custom weaves to meet aesthetic and technical requirements is unsurpassed. Let GKD design for you.*

# MEDIAMESH<sup>®</sup> FABRICS

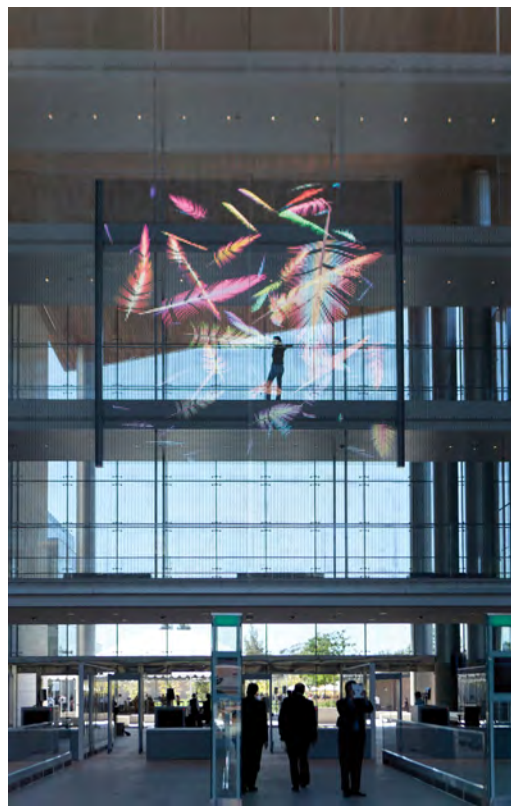
Mediamesh<sup>®</sup> is an adaptation of the Tigris metal fabric design. Flexible stainless steel cables in the length direction and solid rods in the width direction. Each "stripe" of LED's acts as a substitute for multiple cross rods. Mediamesh fabric is flexible in the length direction allowing it to be rolled for transport.

**Fabric:** Mediamesh<sup>®</sup> V5xH5.0  
**Material:** AISI Type 316 SS  
**Type:** Flexible, one direction  
**Open Area:** 57%  
**Weight:** 1.83 lbs/sqft  
**Max Width:** 13'  
**Max Length:** Consult GKD



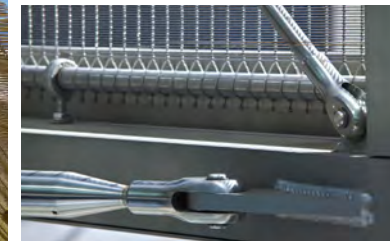
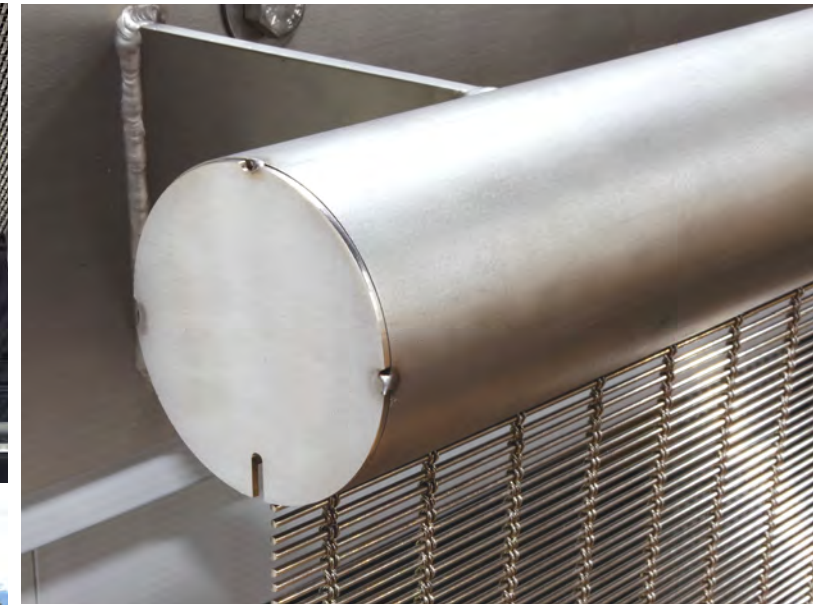
Mediamesh V4xH5.0    Mediamesh V5xH5.0    Mediamesh V6xH5.0

*As the international leader in technical metal weaving, our ability to design and produce custom weaves to meet aesthetic and technical requirements is unsurpassed. Let GKD design for you.*



# INSTALLATION MADE EASY

Depending on the specific application, panel size, structural characteristic, scale, and the design concept, our solution-oriented team will determine how our woven metal fabrics are attached. The methods for attaching metal fabrics fall into two distinct categories: tensioned and framed.



# TENSIONED

Tensioned mounting is flexible in one direction, attached to a structure on opposing ends and then drawn taut.

There are three methods for tensioning metal fabrics: woven-in round bar, extended loop, and clamping profiles.



# FRAMED

Framed mounting describes metal fabrics that have been secured on all sides to a stainless steel frame which is then attached to a structure.

Framed is the preferred attachment method for small panels, such as handrail infills.

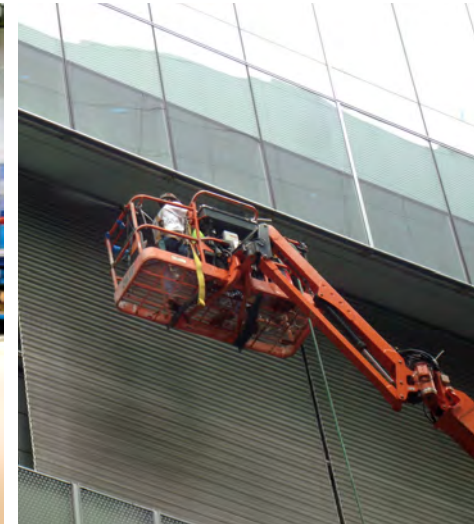


# INNOVATION BACKED BY UNPARALLELED SERVICE

From concept to completion and every step in between, GKD Metal Fabrics is a service driven company. Following an efficient design-to-build process that leverages collaborative project engineering, GKD consistently anticipates its clients' needs and exceeds their expectations. As a result, architects and specifiers world-wide recognize GKD as the authority on metal fabric solutions.

To serve clients' unique requirements, GKD Metal Fabrics proudly offers a variety of installation service options.

- **Instruction and Drawings:** GKD Metal Fabrics provides suggestions, sketches or drawings and offers the client the option of having their own contractor complete installation.
- **Supervisory Oversight:** GKD Metal Fabrics provides supervision on a contractual basis to ensure the smooth implementation of the installation plan. On-site troubleshooting is available if necessary.
- **Supervision and Installation:** Once the substructure is prepared for the metal fabric, GKD Metal Fabrics takes the lead on the product's complete installation. GKD Metal Fabrics takes pride in the fact that it is the only company in the U.S. that manufactures and installs GKD metal fabric.

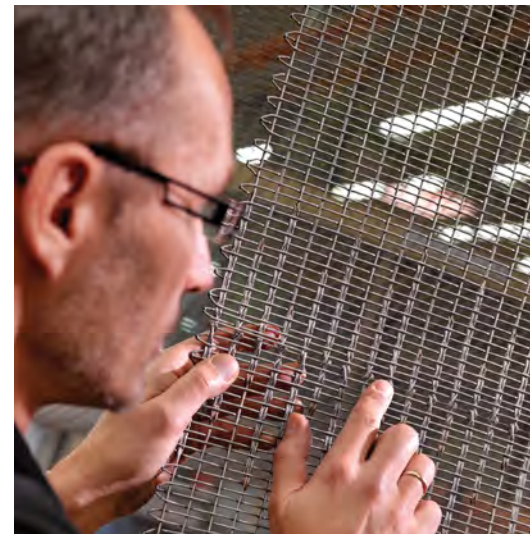


# BUILT FOR TODAY, WITH TOMORROW IN MIND

From researching the environmental impact of new products, technologies and manufacturing processes to utilizing packaging that can be recycled and reused, a ribbon of sustainability runs through every facet of GKD Metal Fabrics. GKD's product line of stainless steel metal fabrics underscores the company's commitment to the environment:

- The stainless steel used in GKD metal fabrics contains greater than 60% post-industrial and post-consumer content recycled material.
- During manufacturing, 100% of the scrap metal material is recycled.
- When GKD metal fabric reaches its useful life, it is 100% recyclable.

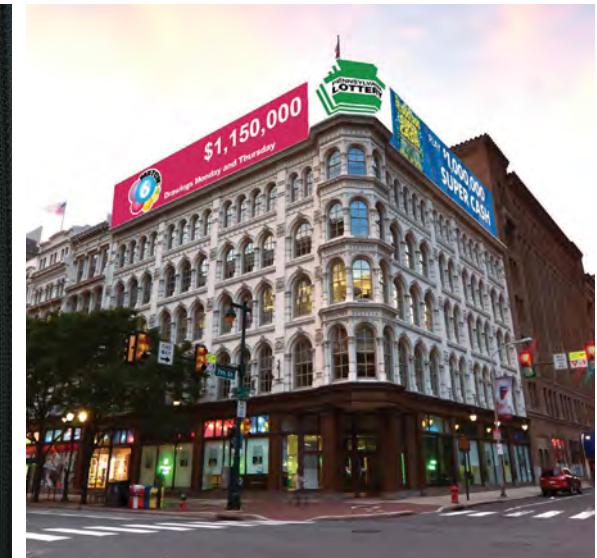
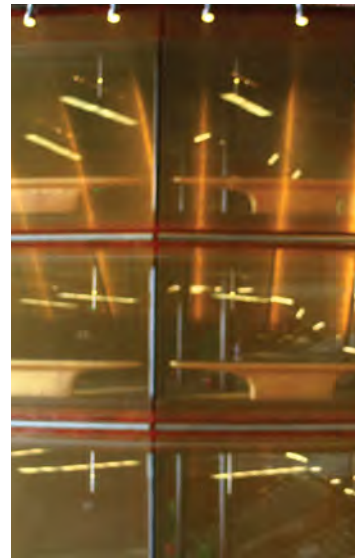
Additionally, using GKD metal fabrics can contribute to a project's LEED points under the Energy and Atmosphere, Material and Resources, Indoor Environmental Quality, Innovation and Design and Site Selection categories.



# TIMELESS BEAUTY, MINIMAL UPKEEP

GKD's high-quality woven metal fabrics and innovative attachment systems are crafted of non-corroding high-grade AISI Type 316 stainless steel that is heat, fire and impact resistant and suitable for all climates and environments. Regardless of the application, clients can trust GKD metal fabric to retain its beauty for decades with minimal maintenance. In fact, many interior applications only require dusting and a light cleaning. Exterior projects may call for a periodic pressure washing.

In addition to stainless steel, other materials, such as copper, bronze, aluminum are occasionally employed to achieve results of function and aesthetics and may require maintenance protocols specific to those materials.







**METALFABRICS®**

**GKD-USA, Inc.**

825 Chesapeake Drive

Cambridge, MD 21613

800-453-8616

[gkdmetalfabrics.com](http://gkdmetalfabrics.com)



©2015 GKD-USA, Inc. All Rights Reserved. GKD® is a registered trademark of GKD Gebr. Kufferath AG.  
"USGBC" logo is a trademark owned by the U.S. Green Building Council and is used by permission.