

BookletChart™

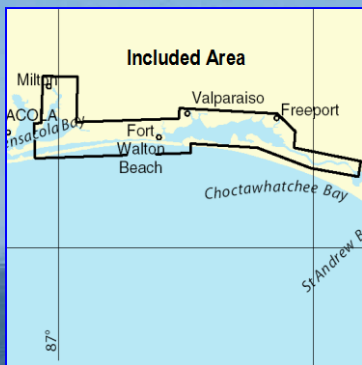


Intracoastal Waterway – West Bay to Santa Rosa Sound

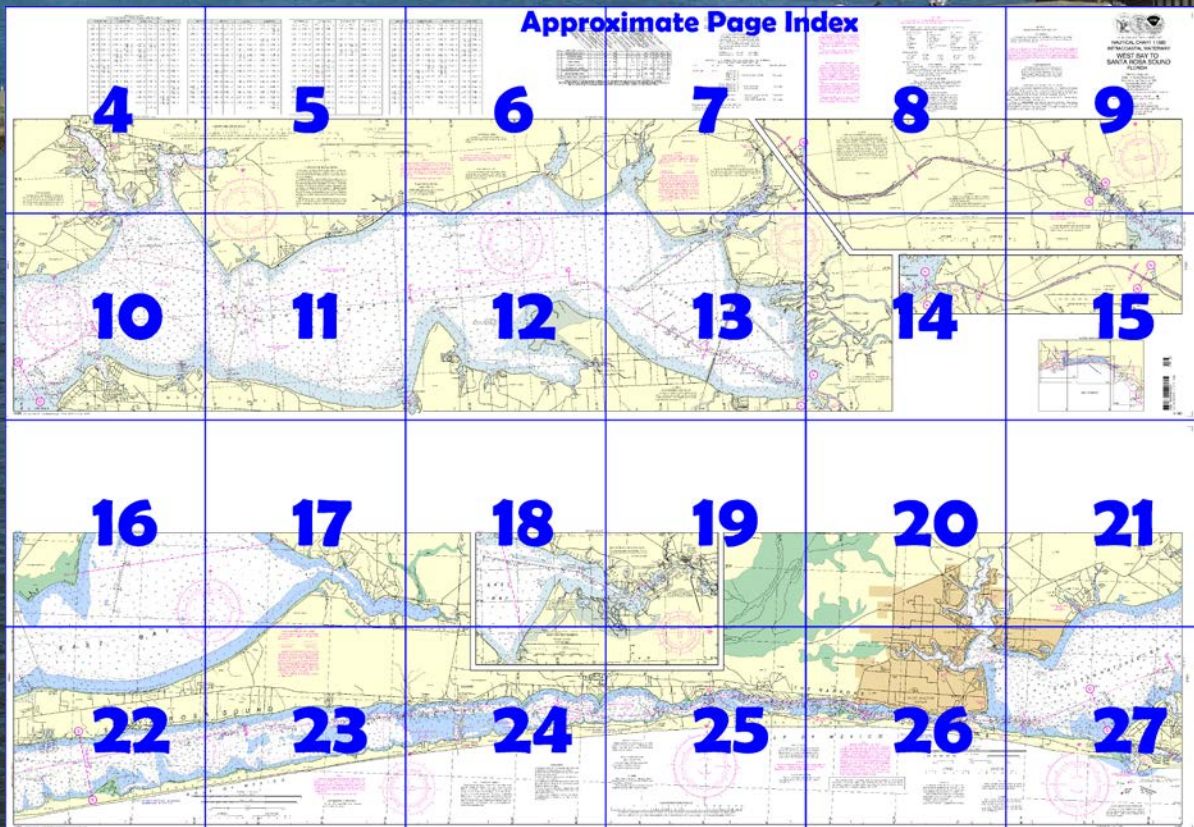
NOAA Chart 11385

A reduced-scale NOAA nautical chart for small boaters

When possible, use the full-size NOAA chart for navigation.



- Complete, reduced-scale nautical chart
- Print at home for free
- Convenient size
- Up-to-date with Notices to Mariners
- Compiled by NOAA's Office of Coast Survey, the nation's chartmaker



**Published by the
National Oceanic and Atmospheric Administration
National Ocean Service
Office of Coast Survey
www.NauticalCharts.NOAA.gov
888-990-NOAA**

What are Nautical Charts?

Nautical charts are a fundamental tool of marine navigation. They show water depths, obstructions, buoys, other aids to navigation, and much more. The information is shown in a way that promotes safe and efficient navigation. Chart carriage is mandatory on the commercial ships that carry America's commerce. They are also used on every Navy and Coast Guard ship, fishing and passenger vessels, and are widely carried by recreational boaters.

What is a BookletChart™ ?

This BookletChart is made to help recreational boaters locate themselves on the water. It has been reduced in scale for convenience, but otherwise contains all the information of the full-scale nautical chart. The bar scales have also been reduced, and are accurate when used to measure distances in this BookletChart. See the Note at the bottom of page 5 for the reduction in scale applied to this chart.

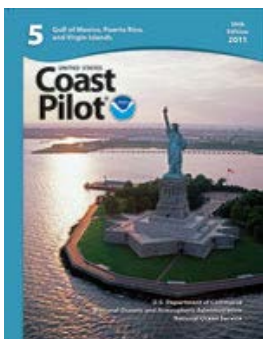
Whenever possible, use the official, full scale NOAA nautical chart for navigation. Nautical chart sales agents are listed on the Internet at <http://www.NauticalCharts.NOAA.gov>.

This BookletChart does NOT fulfill chart carriage requirements for regulated commercial vessels under Titles 33 and 44 of the Code of Federal Regulations.

Notice to Mariners Correction Status

This BookletChart has been updated for chart corrections published in the U.S. Coast Guard Local Notice to Mariners, the National Geospatial Intelligence Agency Weekly Notice to Mariners, and, where applicable, the Canadian Coast Guard Notice to Mariners. Additional chart corrections have been made by NOAA in advance of their publication in a Notice to Mariners. The last Notices to Mariners applied to this chart are listed in the Note at the bottom of page 7. Coast Pilot excerpts are not being corrected.

For latest Coast Pilot excerpt visit the Office of Coast Survey website at <http://www.nauticalcharts.noaa.gov/nsd/searchbychart.php?chart=11385>



[Coast Pilot 5, Chapter 9 excerpts].
Choctawhatchee Bay Entrance. East Pass extends into the W part of Choctawhatchee Bay between Moreno Point and Santa Rosa Island, and is protected by two jetties. The jetties are marked by a light off their seaward ends. **Choctawhatchee Bay Entrance Lighted Whistle Buoy CB** (30°22'18"N., 86°30'24"W.), 0.5 mile off the entrance to the channel, marks the approach. To carry the best depths, mariners should be guided by the color of

the water. Passage should not be attempted in rough weather. Local knowledge is advised. The controlling depth was 5.5 feet (6.1 feet at

midchannel) from Buoy CB to the bridge; thence 9.9 feet through North Channel to the bay. The channel S of the bridge is subject to frequent changes and shoals between dredgings. Buoys are shifted to mark best water. The channel is marked by lights, buoys, and daybeacons.

Choctawhatchee Bay. Depths in the bay decrease gradually from W to E with 18 to 43 feet in the W two-thirds, except near the shores, and 8 to 16 feet in the E third.

Choctawhatchee River. The mouth of Choctawhatchee River is shallow, and boats enter through **Cypress River**. Cypress River entrance, marked by a light, has a depth of 6 feet. **Black Creek**, with depths of 8 feet inside, but bars of about 1-foot depth blocking the entrance, leads to the village of **Black Creek**. Berths, gasoline, a launching ramp, water, ice, and marine supplies are available at a small fish camp on the W bank of the creek 1.6 miles above its mouth.

A channel leads from Choctawhatchee Bay to a turning basin at the head of navigation S of the fixed bridge at Freeport. The depth was 5½ feet (6 feet at midchannel) in the channel with 8½ to 9½ feet in the turning basin, except for lesser depths along the N and NW edges. The channel is well marked. The bridge at Freeport has a clearance of 5 feet. An overhead power cable with a clearance of 24 feet crosses the channel close E of the bridge.

Access channels have been dug through the spoil banks to a channel along the E bank as far as **Ramsey Branch**. Depths of about 1½ feet were reported in these channels. A small marina on Ramsey Branch provides temporary bulkhead tie-up, limited marine supplies, and outboard engine repairs.

There are private piers and fish piers on LaGrange Bayou and Fourmile Creek. Gasoline and marine supplies can be obtained on U.S. Route 331 and State Route 20 in Freeport.

Basin Bayou. State Route 20 bridge across the narrow entrance with a clearance of 4 feet. A paved launching ramp is near the bridge and gasoline is available in cans. The launching ramp is accessible at high water only.

Rocky Bayou has depths of 10 to 20 feet and affords good anchorage for small craft. The entrance to the bayou is marked on the W side by a light. A channel about 0.9 mile above the entrance to the bayou leads SE to a marina in **Ward Cove**. The channel is marked by a private buoy and had a depth of 6 feet. Gasoline, diesel fuel, berths with water and electricity, ice, a launching ramp, and marine supplies are available.

A **restricted area** has been designated in **Weekley Bayou**, an arm of Boggy Bayou. (See **334.740**, chapter 2, for limits and regulations.)

The **danger zones** of two Air Force proving grounds have been established in Santa Rosa Sound, The Narrows, and the Gulf. (See **334.710 and 334.730**, chapter 2, for limits and regulations.)

Unexploded ordnance lies on the bottom a mile offshore from Santa Rosa Island, about 8 miles W of Choctawhatchee Bay Entrance.

Santa Rosa Island and the E part of Perdido Key, W of the entrance to Pensacola Bay, are part of **Gulf Islands National Seashore** and subject to the rules and regulations of the U.S. Department of the Interior's National Park Service.

**U.S. Coast Guard Rescue Coordination Center
24 hour Regional Contact for Emergencies**

RCC New Orleans

Commander

8th CG District

New Orleans, LA

(504) 589-6225

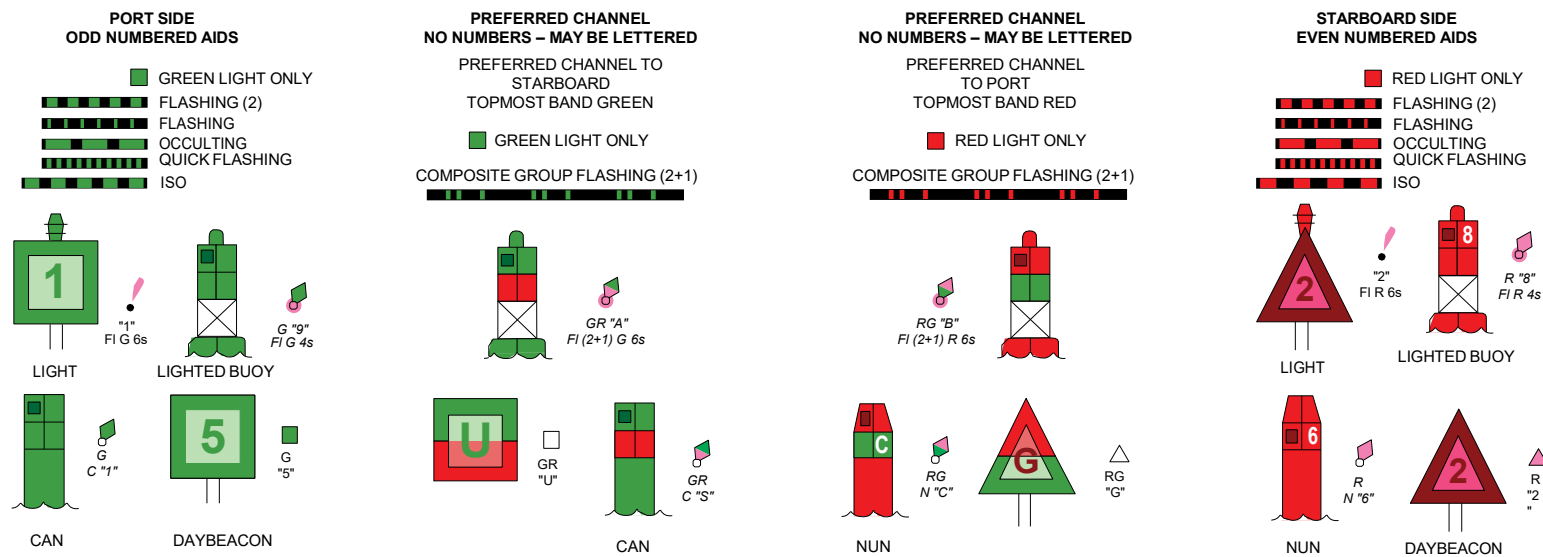
Navigation Manager Regions



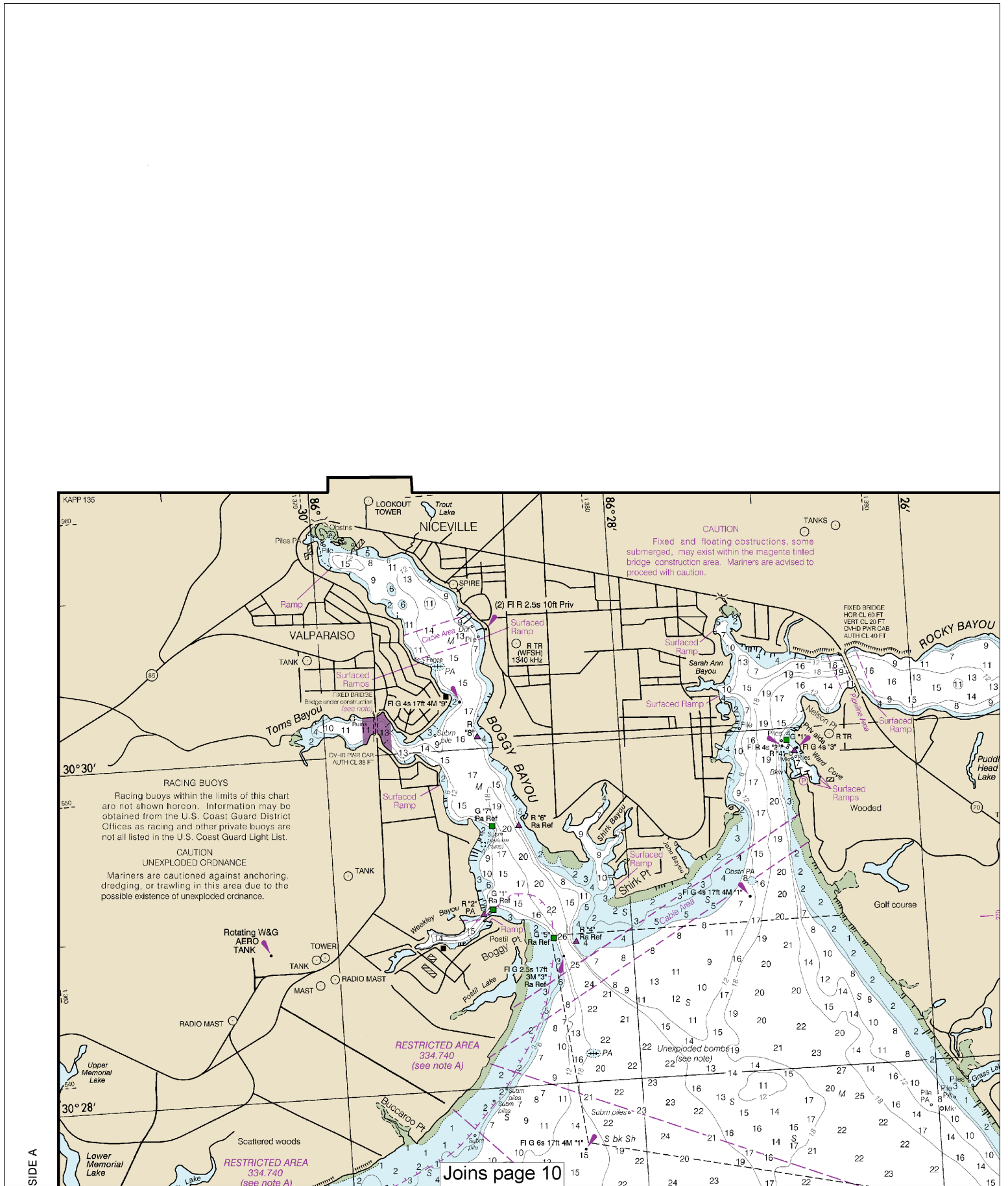
To make suggestions, ask questions, or report a problem with a chart, go to <https://www.nauticalcharts.noaa.gov/customer-service/assist/>

Lateral System As Seen Entering From Seaward

on navigable waters except Western Rivers



For more information on aids to navigation, including those on Western Rivers, please consult the latest USCG Light List for your area. These volumes are available online at <http://www.navcen.uscg.gov>



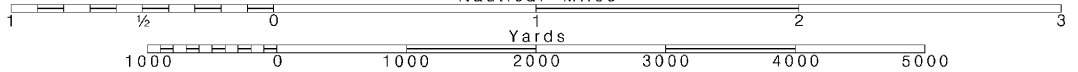
4

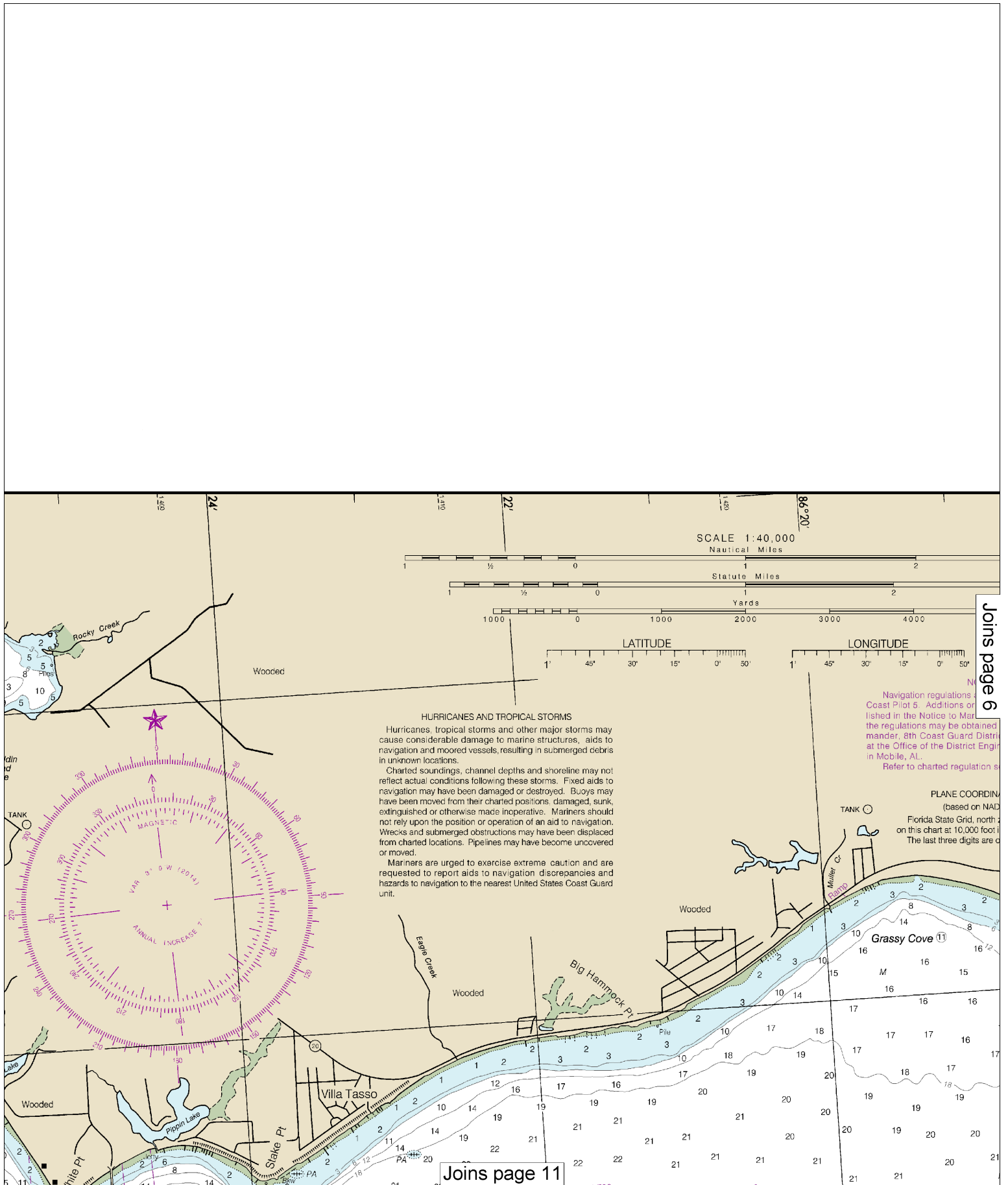
Note: Chart grid lines are aligned with true north.

Printed at reduced scale.

SCALE 1:40,000
Nautical Miles

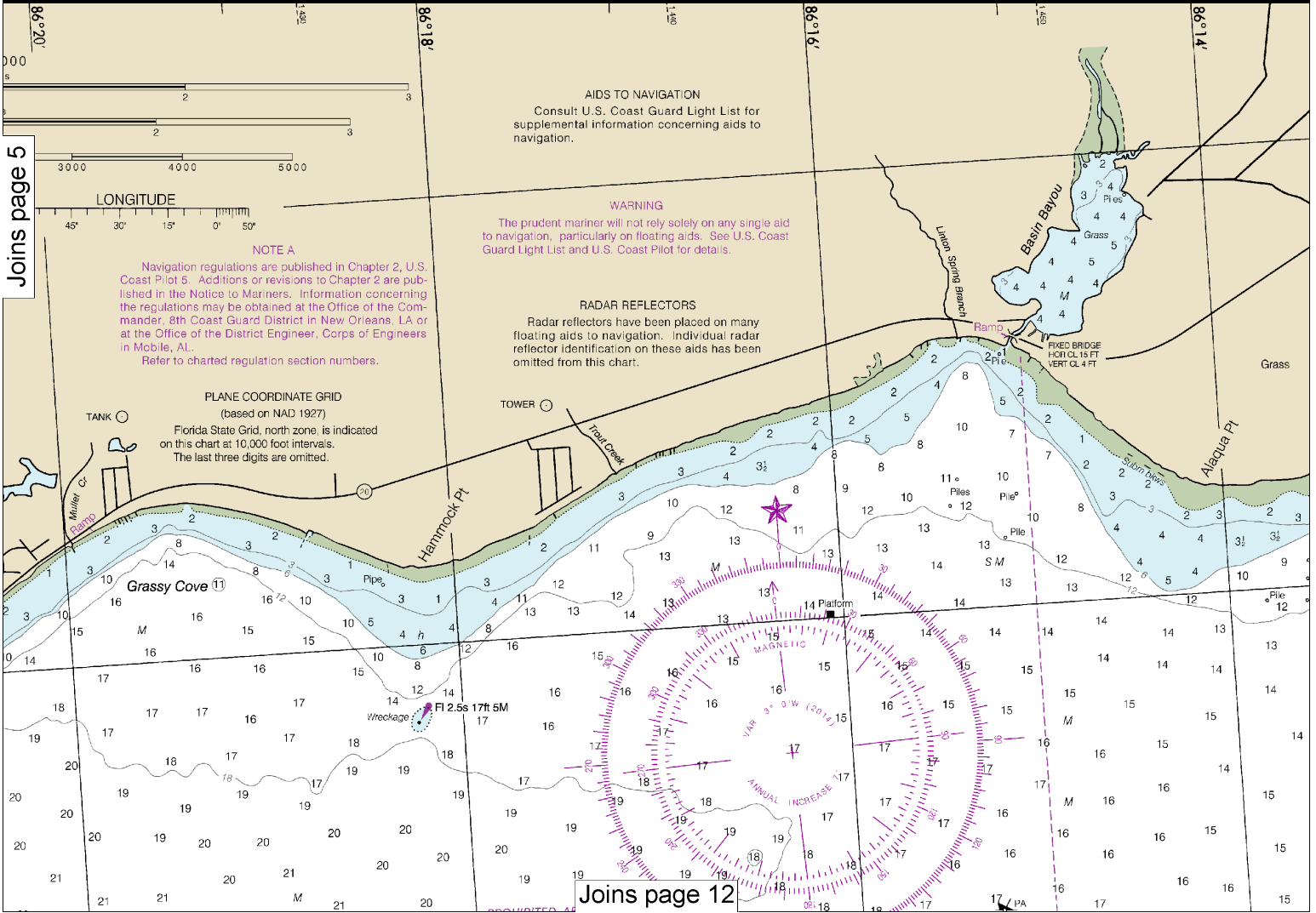
See Note on page 5.





This BookletChart was reduced to 75% of the original chart scale. The new scale is 1:53333. Barscales have also been reduced and are accurate when used to measure distances in this BookletChart.

Joins page 5



Joins page 12

Printed at reduced scale.

SCALE 1:40,000
Nautical Miles

See Note on page 5.



Note: Chart grid lines are aligned with true north.

MARINE WEATHER FORECASTS
NATIONAL WEATHER SERVICE

CITY	TELEPHONE NUMBERS	OFFICE HOURS
Tallahassee, FL	(850) 942-8633	8:00 AM-5:00 PM (Mon.-Fri.)
Mobile, AL	(251) 633-6443	8:00 AM-5:00 PM (Mon.-Fri.)

NOAA WEATHER RADIO BROADCASTS

The NOAA Weather Radio stations listed below provide continuous weather broadcasts. The reception range is typically 20 to 40 nautical miles from the antenna site, but can be as much as 100 nautical miles for stations at high elevations.

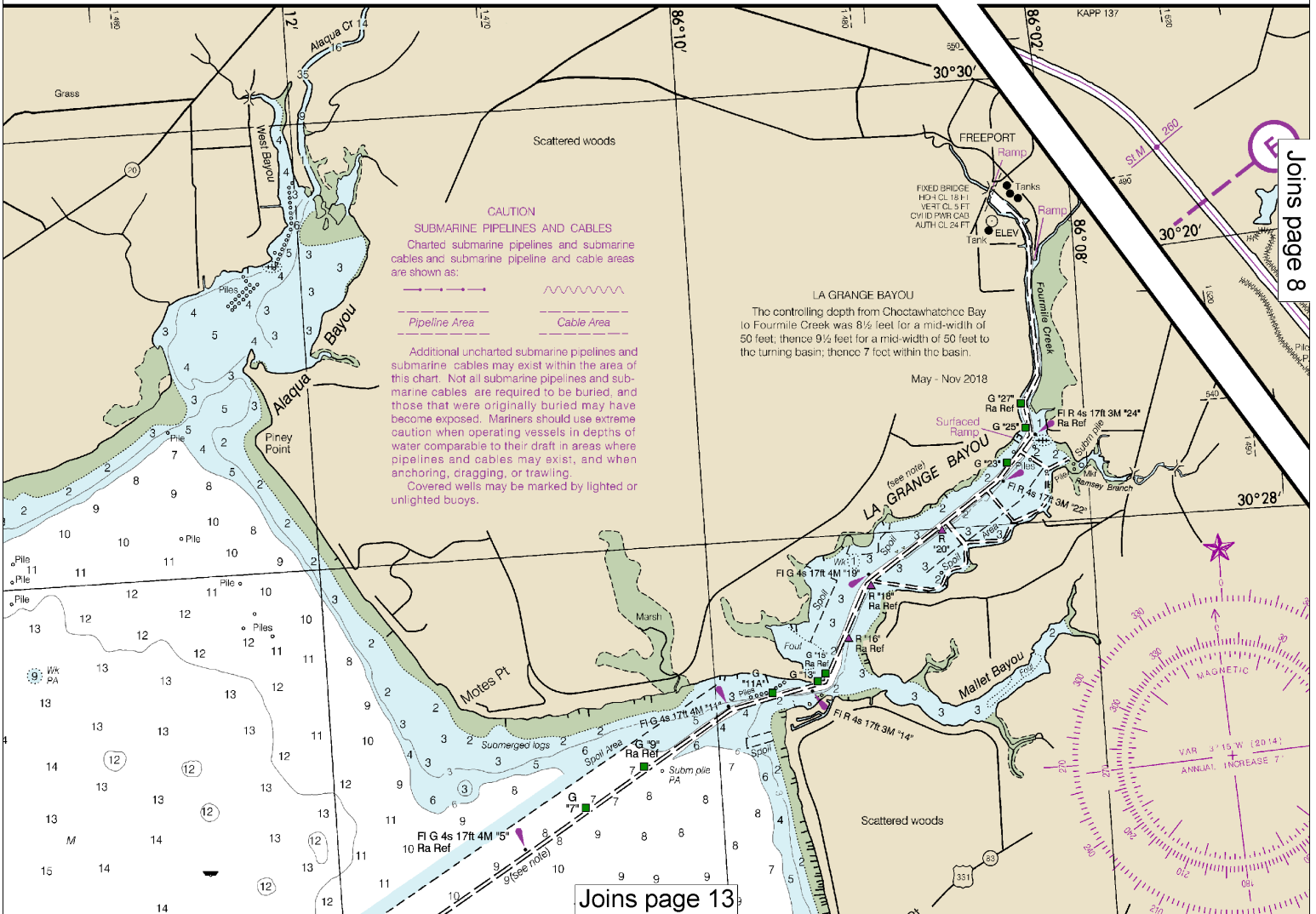
Pensacola, FL	KEC-86	162.400 MHz
Panama City, FL	KCG-67	162.550 MHz

BROADCASTS OF MARINE WEATHER FORECASTS AND WARNINGS
BY MARINE RADIOTELEPHONE STATIONS

CITY	STATION	FREQ	BROADCAST TIMES	SPECIAL WARNING	
Mobile, AL	WLO	2572 kHz	7:00 AM Noon & 6:00 PM	*On receipt	
		8808.8 kHz			
		4397.7 kHz			
		13178.8 kHz			
		22707.6 kHz			
		{(Ch 25) 161.85 MHz	6:00 & 11:00 AM	On receipt	
		{(Ch 26) 161.90 MHz			
		{(Ch 27) 161.95 MHz			
		{(Ch 28) 162.0 MHz			
		{(Ch 28) 162.0 MHz			
New Orleans, LA		2670 kHz	4:35, 6:35, 10:35 & 11:50 AM	*On receipt	
					4:35 & 11:50 PM
		157.1 MHz			4:50 & 10:50 AM 4:50 PM

* Preceded by announcement on 2182 kHz and 156.8 MHz
Distress calls for small craft are made on 2182 kHz or channel 16 (156.80 MHz) VHF.

SC, 1st. Ed., 1970



Joins page 8

Joins page 13

Use ENC charts for the most up to date information. References to other charts may no longer be applicable.
29th Ed., Aug. 2020. Last Correction: 2/2/2022. Cleared through:
LNM: 1622 (4/19/2022), NM: 1822 (4/30/2022)



INTRACOASTAL WATERWAY
Project Depth
12 feet Carrabelle, FL to Brownsville, TX.
Consult the U.S. Army Corps of Engineers for controlling depths and U.S. Coast Guard Local Notice to Mariners for other navigation hazards or restrictions.
Uncharted shoals may exist in areas which have not been recently surveyed. Please report shoals and obstructions at:
<http://nauticalcharts.noaa.gov/staff/contact.htm>

Distances
The general location of the Waterway is indicated by a magenta line. Mariners are advised to follow the aids to navigation and avoid charted shoals and obstructions.
Mileage distances shown along the Waterway are in Statute Miles, based on zero at Harvey Lock, LA and are indicated thus: —●—
One Statute Mile equals 0.87 Nautical Miles.
Courses are TRUE and must be CORRECTED for any variation and compass deviation.

INTRACOASTAL WATERWAY AIDS
The U.S. Aids to Navigation System is designed for use with nautical charts, and the exact meaning of an aid to navigation may not be clear unless the appropriate chart is consulted.
Aids to navigation marking the Intracoastal Waterway exhibit unique yellow symbols to distinguish them from aids marking other waterways.
When following the Intracoastal Waterway westward from Carrabelle, FL to Brownsville, TX aids with yellow triangles should be kept on the starboard side of the vessel and aids with yellow squares should be kept on the port side of the vessel.
A horizontal yellow band provides no lateral information, but simply identifies aids to navigation as marking the Intracoastal Waterway.

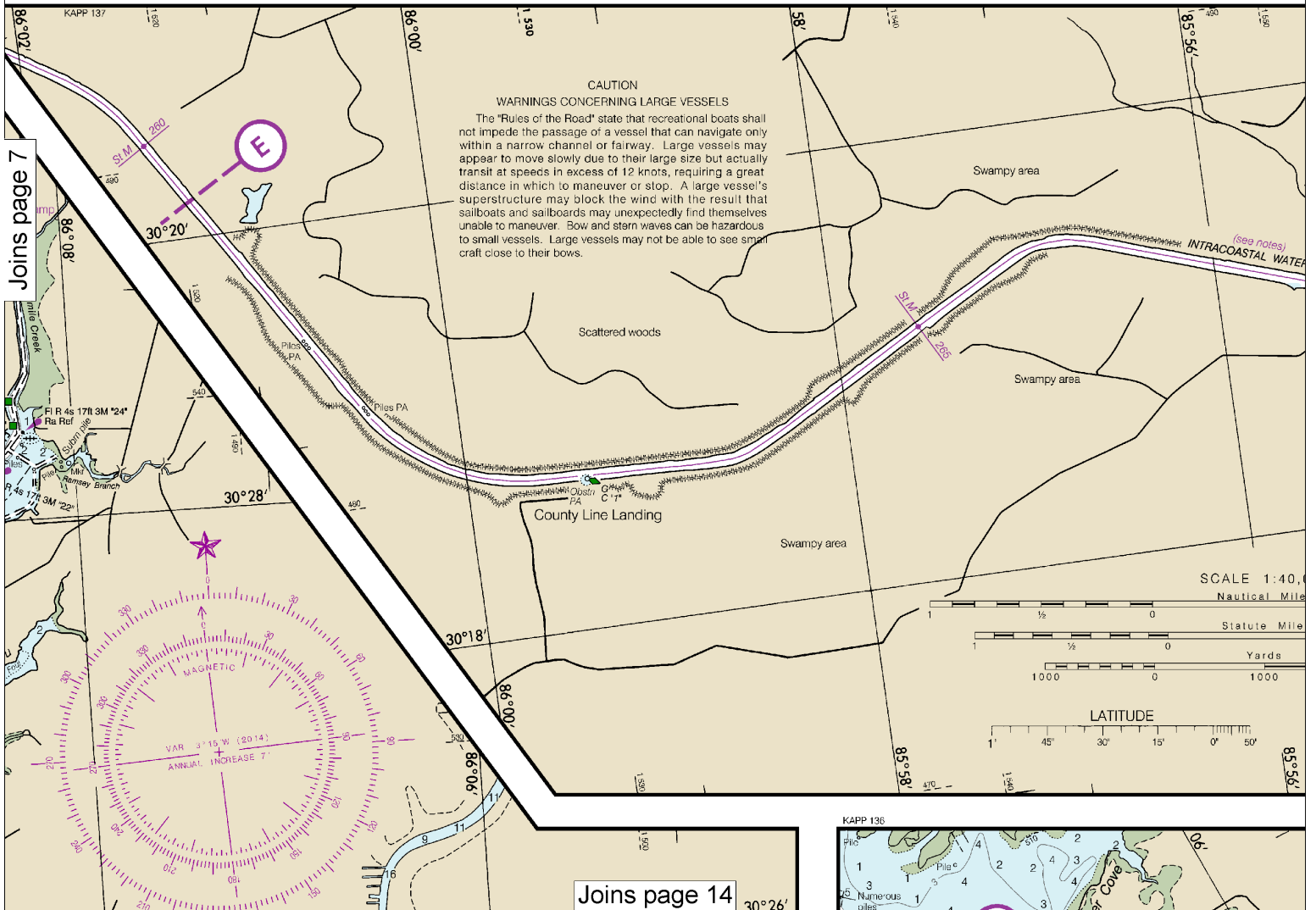
ABBREVIATIONS (For complete list of Symbols and Abbreviations, see Chart No. 1.)
Aids to Navigation (lights are white unless otherwise indicated):
AERO aeronautical G green Mo moose code R TR radi
Al alternating IQ interrupted quick N nun Rot rotati
B black iso isophase OBSC obscured s seconds
Bn beacon LT LC lighthouse Oc occulting SEC sect
C can M nautical mile Or orange R M stat
DIA diaphone m minutes O quick VQ very d
F fixed MICRO TR microwave tower R fl red W white
Fl flashing Mkr marker R Ra Rfa radar reflector Wh-Is whi
R Bn radiobeacon Y yellow

Bottom characteristics:
Blds boulders Co coral gy gray Oys oysters so soft
bk broken G gravel h hard Rk rock Sh shells
Cy clay Grs grass M mud S sand Sy sticky

Miscellaneous:
AUTH authorized Obstr obstruction PD position doubtful Subm sub
ED existence doubtful PA position approximate Rep reported
(1) Wreck, rock, obstruction, or shoal swept clear to the depth indicated.
(2) Rocks that cover and uncover, with heights in feet above datum of soundings.
COLREGS: International Regulations for Preventing Collisions at Sea, 1972.
Demarcation lines are shown thus: - - - - -

POLLUTION REPORTS
Report all spills of oil and hazardous substances to the National Response Center via 1-800-424-8802 (toll free), or to the nearest U.S. Coast Guard facility if telephone communication is impossible (33 CFR 153).

HORIZONTAL DATUM
The horizontal reference datum of this chart is North American Datum of 1983 (NAD 83), which for charting purposes is considered equivalent to the World Geodetic System 1984 (WGS 84). Geographic positions referred to the North American Datum of 1927 must be corrected an average of 0.707" northward and 0.174" eastward to agree with this chart.

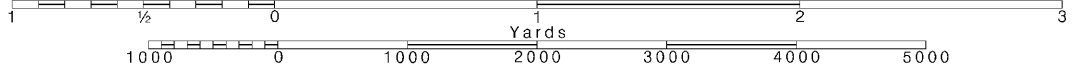


Note: Chart grid lines are aligned with true north.

Printed at reduced scale.

SCALE 1:40,000
Nautical Miles

See Note on page 5.





THE NATION'S CHARTMAKER SINCE 1807

NAUTICAL CHART 11385 INTRACOASTAL WATERWAY WEST BAY TO SANTA ROSA SOUND FLORIDA

Mercator Projection

Scale 1:40,000 at Lat 30°24'

North American Datum of 1983

(World Geodetic System 1984)

SOUNDINGS IN FEET
AT MEAN LOWER LOW WATER

Additional information can be obtained at nauticalcharts.noaa.gov.

Chart 11385

Published at Washington, D.C.
U.S. DEPARTMENT OF COMMERCE
NATIONAL OCEANIC AND ATMOSPHERIC ADMINISTRATION
NATIONAL OCEAN SERVICE
COAST SURVEY

HEIGHTS

Heights in feet above Mean High Water.

AUTHORITIES

Hydrography and topography by the National Ocean Service, Coast Survey, with additional data from the Corps of Engineers, Geological Survey, and U.S. Coast Guard.

CAUTION

This chart has been corrected from the Notice to Mariners (NM) published weekly by the National Geospatial-Intelligence Agency and the Local Notice to Mariners (LNM) issued periodically by each U.S. Coast Guard district to the dates shown in the lower left hand corner. Chart updates corrected from Notice to Mariners published after the dates shown in the lower left hand corner are available at nauticalcharts.noaa.gov.

TIDAL INFORMATION

No tidal observations are available for the area covered by this chart.

Ⓟ Pump-out facilities

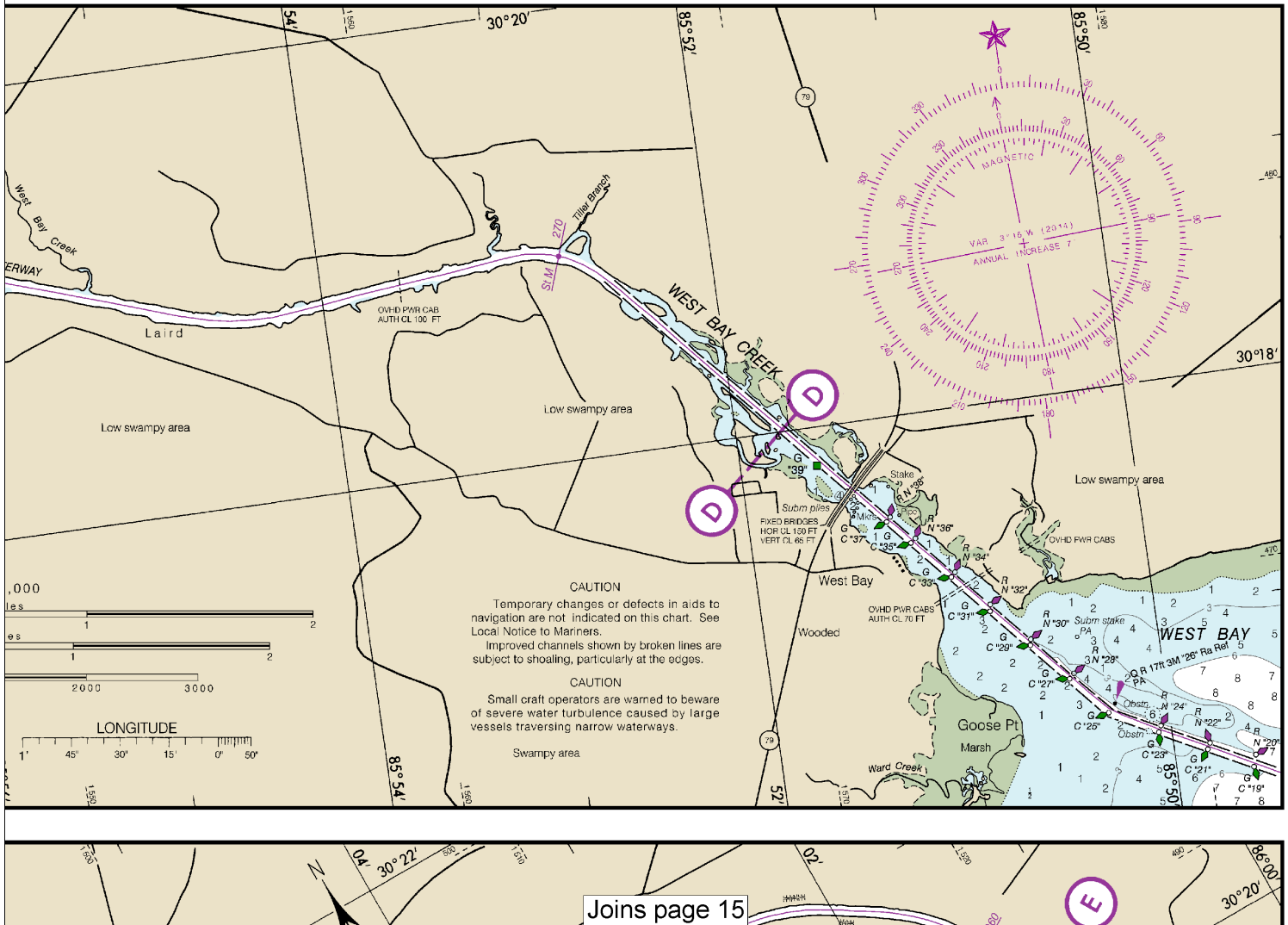
PUBLIC BOATING INSTRUCTION PROGRAMS

The United States Power Squadrons (USPS) and U.S. Coast Guard Auxiliary (USCGAUX), national organizations of boatmen, conduct extensive boating instruction programs in communities throughout the United States. For information regarding these educational courses, contact the following sources:

USPS - Local Squadron Commander or USPS Headquarters, 1504 Blue Ridge Road, Raleigh, NC 27807, 888-367-8777

USCGAUX - COMMANDER (OAX), Eighth Coast Guard District, Hale Boggs Federal Building, Suite 1126, 500 Poydras Street, New Orleans, LA 70130, 800-524-8835 or USCG Headquarters, Office of the Chief Director (G-OCX), 2100 Second Street, SW, Washington, DC 20593

radio tower
lighting
depths
color
statute miles
quick
whistle
s
y
abmerged



Joins page 15

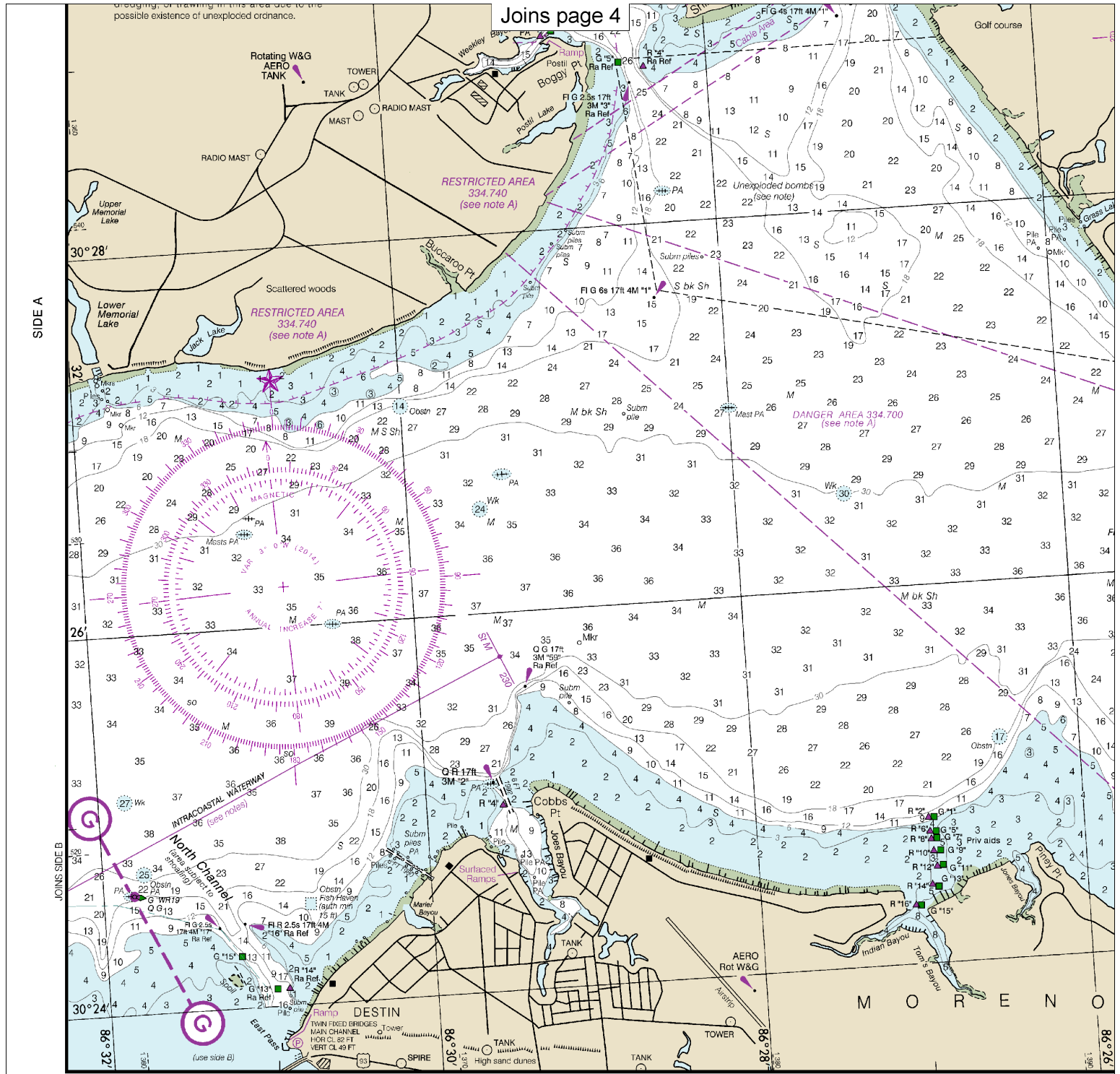
JOINS CHART 11380 (SIDE B)

SIDE A



dragging, or trawling in this area due to the possible existence of unexploded ordnance.

Joins page 4



11385

Joins page 16

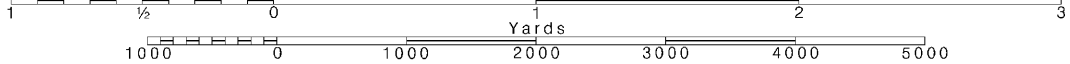
10

Note: Chart grid lines are aligned with true north.

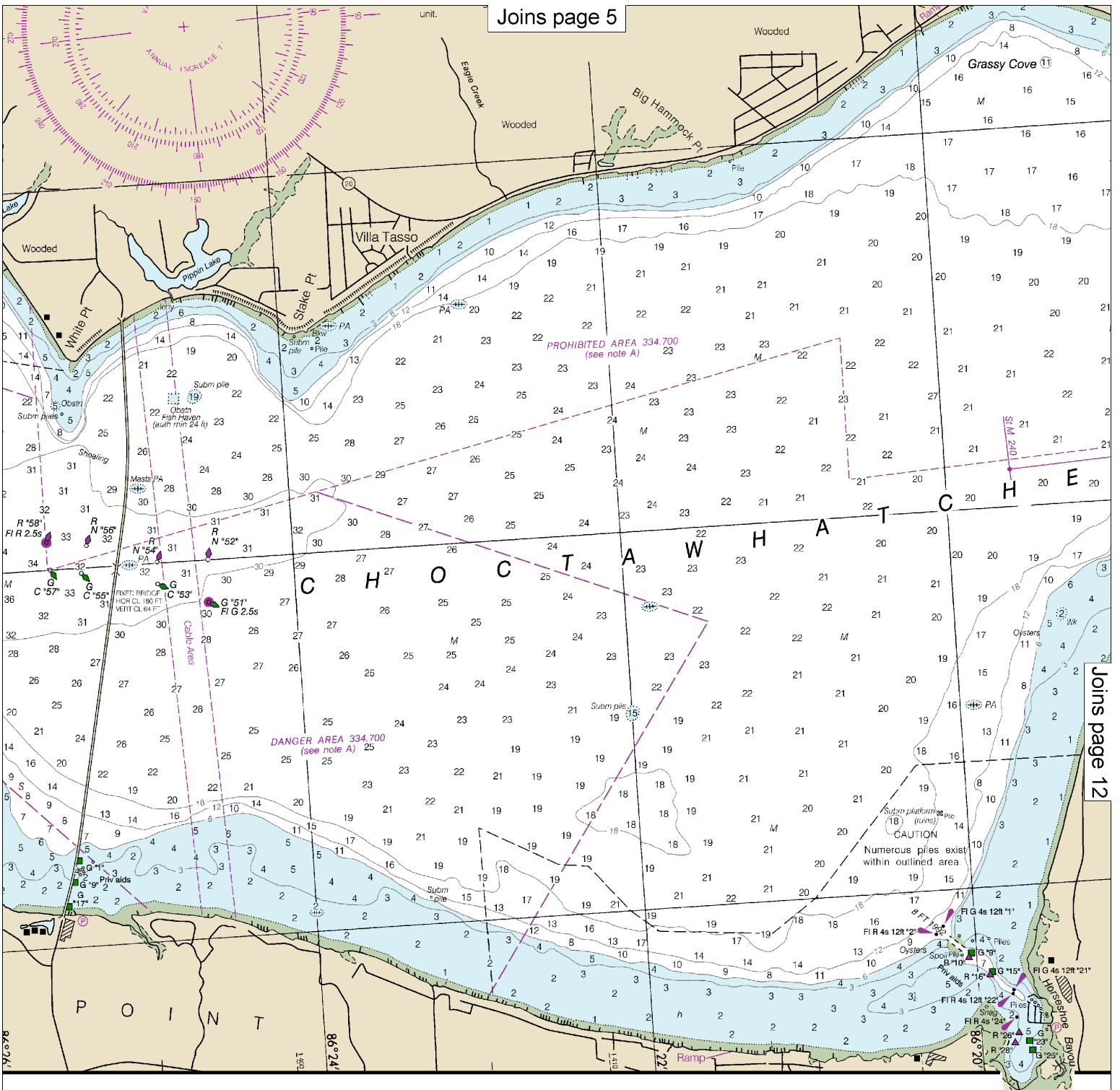
Printed at reduced scale.

SCALE 1:40,000 Nautical Miles

See Note on page 5.

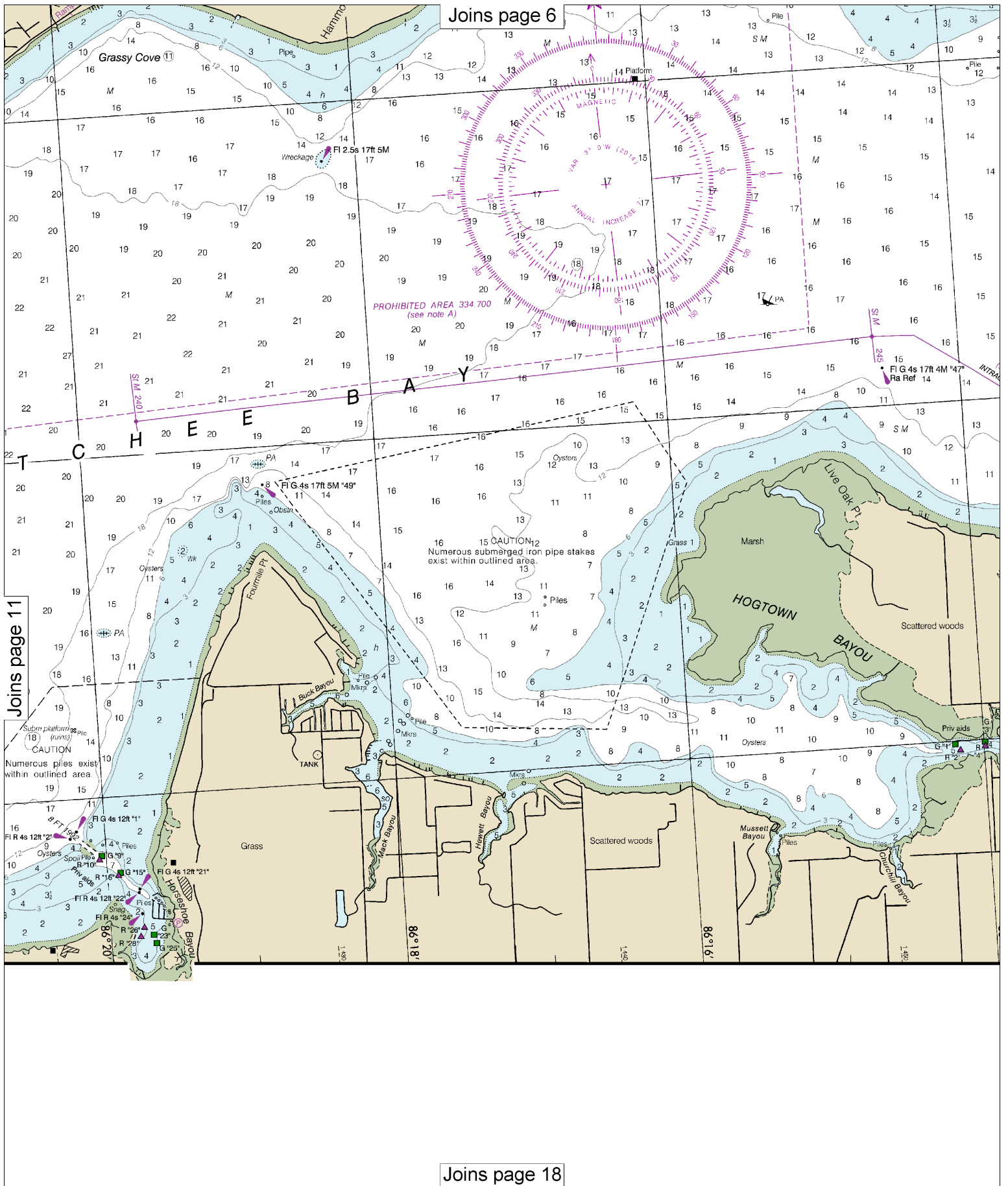


Joins page 5



Joins page 12

Joins page 17



Joins page 6

Joins page 11

Joins page 18

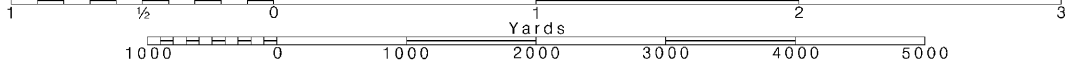
12

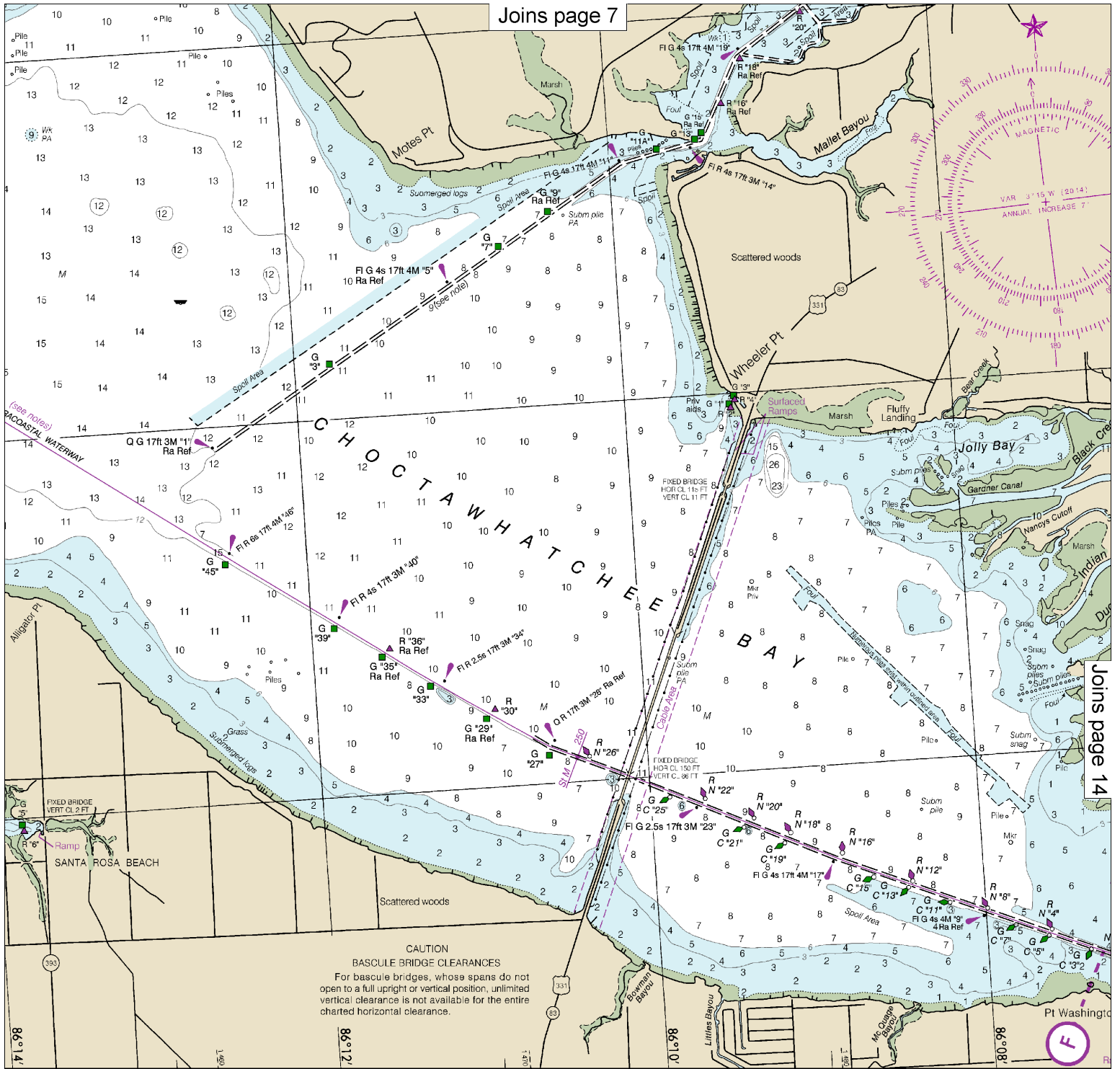
Note: Chart grid lines are aligned with true north.

Printed at reduced scale.

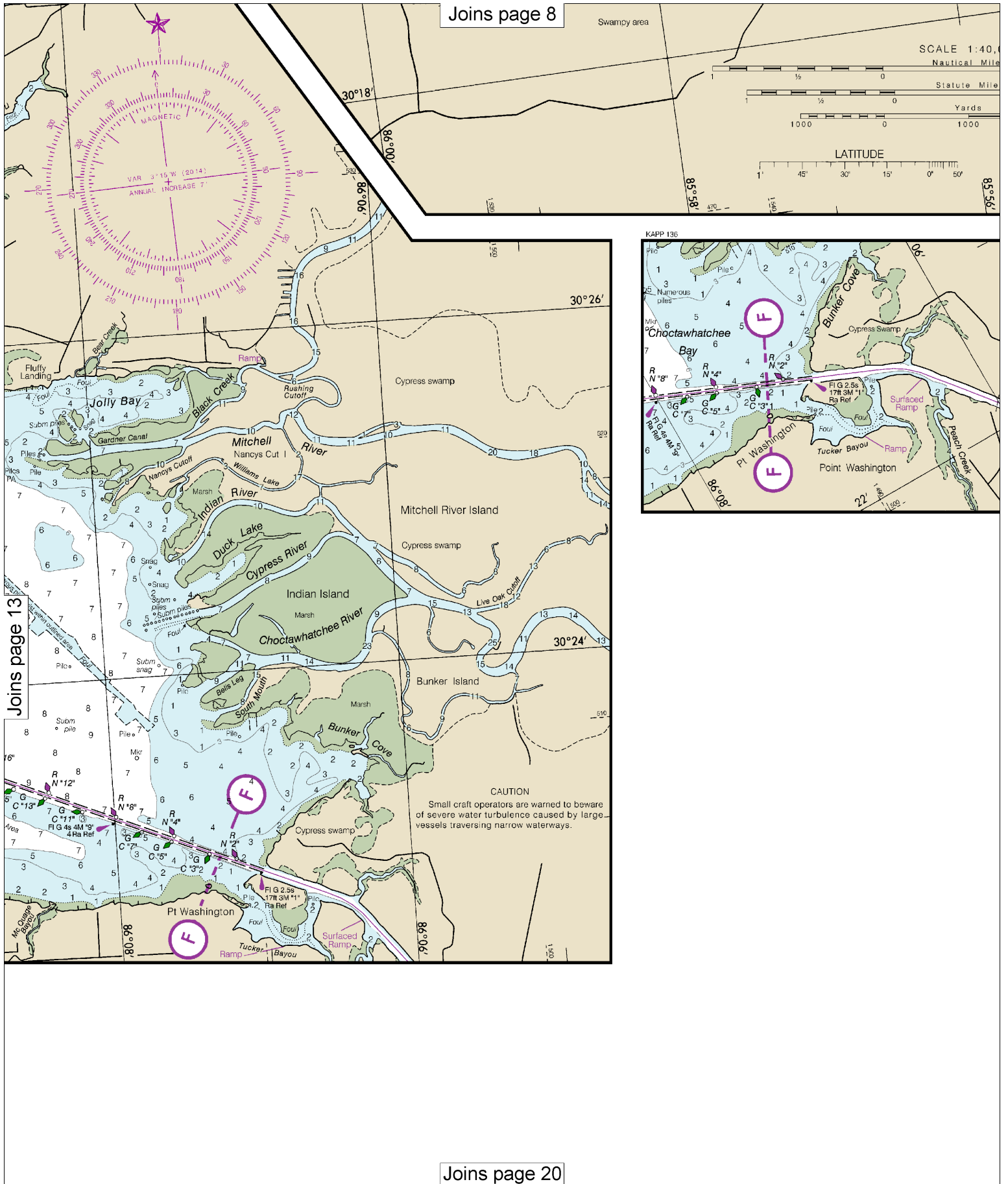
SCALE 1:40,000
Nautical Miles

See Note on page 5.





Joins page 14

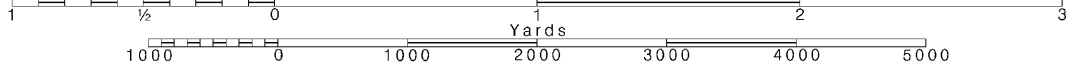


Note: Chart grid lines are aligned with true north.

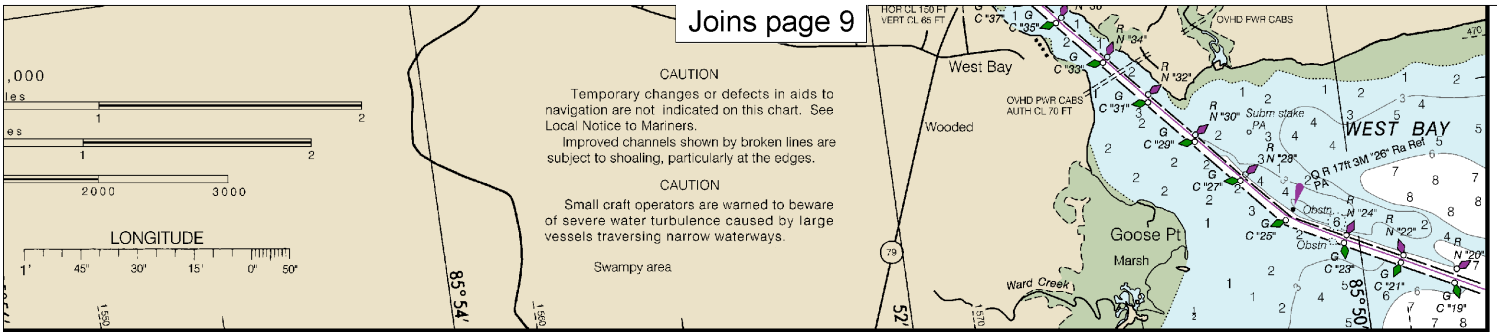
Printed at reduced scale.

SCALE 1:40,000
Nautical Miles

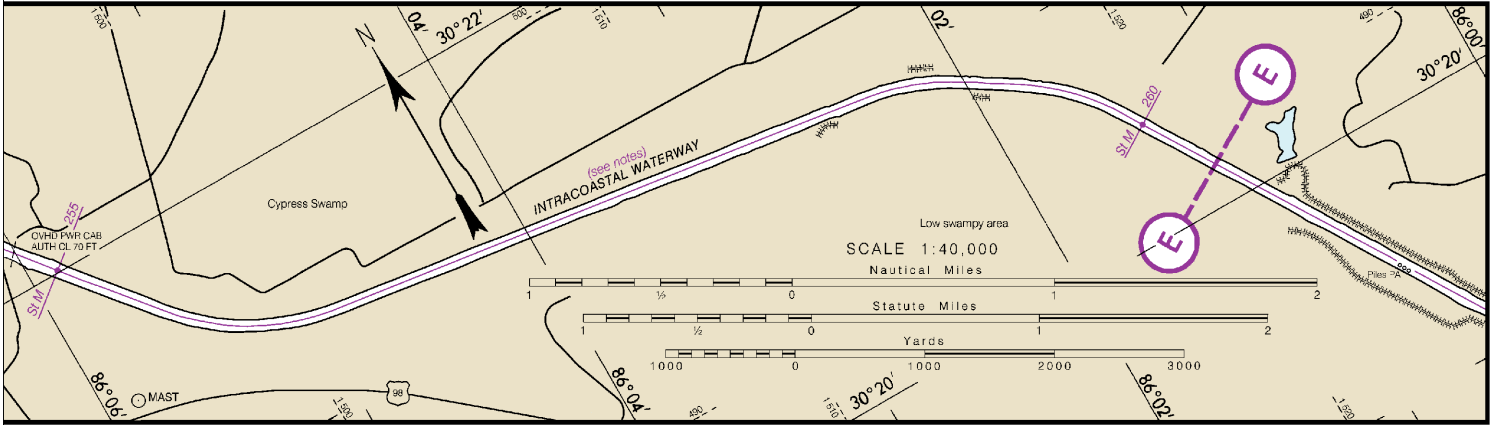
See Note on page 5.



Joins page 9

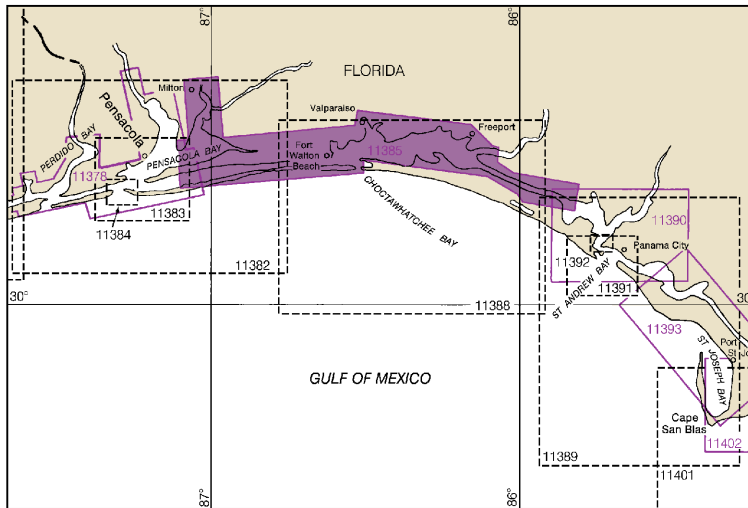


JOINS CH-ART 11300 (SIDE B)



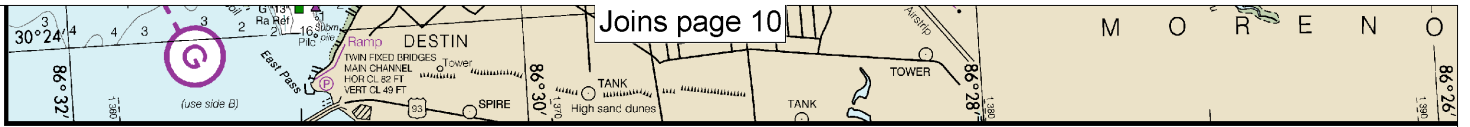
SIDE A

NAUTICAL CHART DIAGRAM

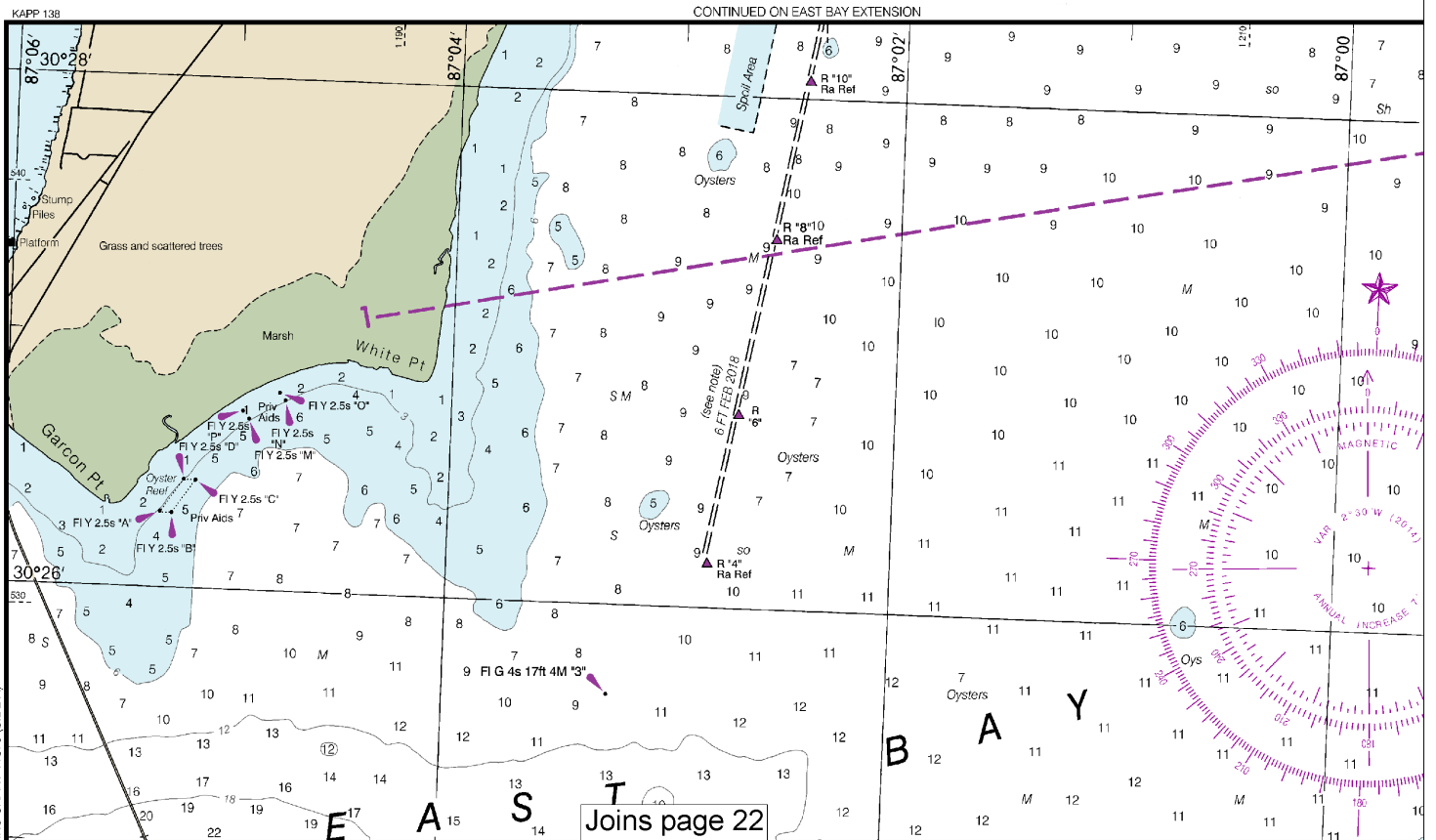


11385

Joins page 21



11385



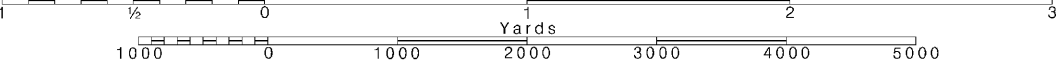
16

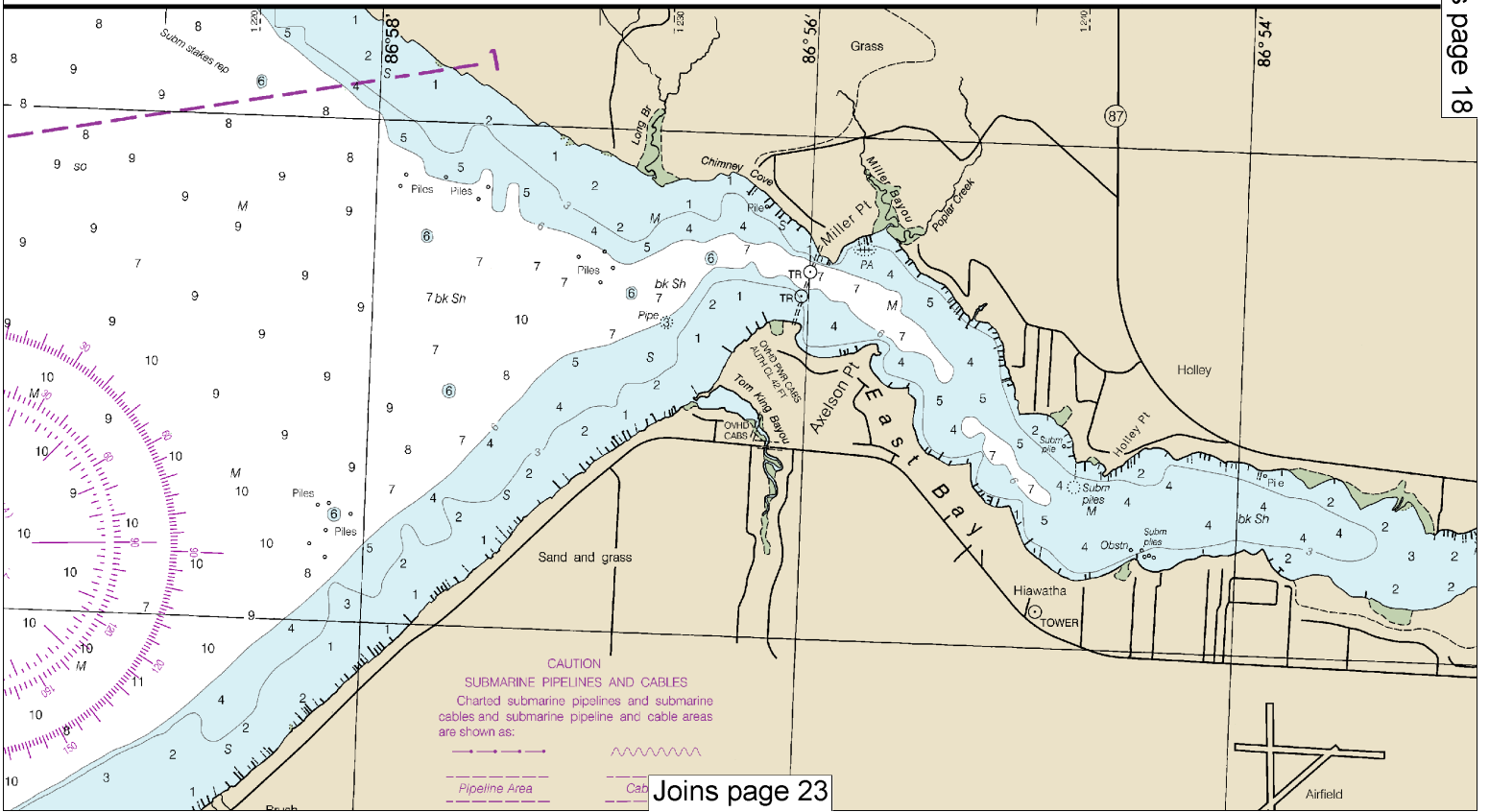
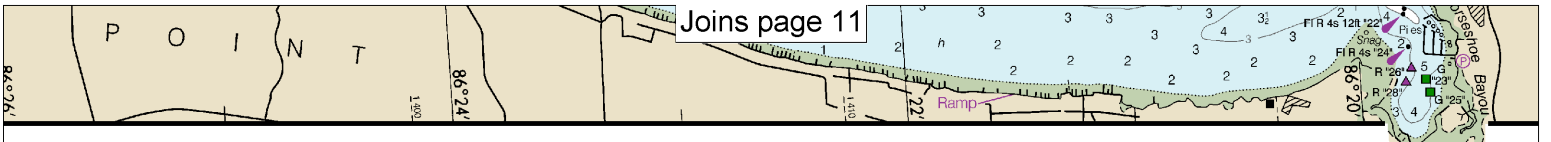
Note: Chart grid lines are aligned with true north.

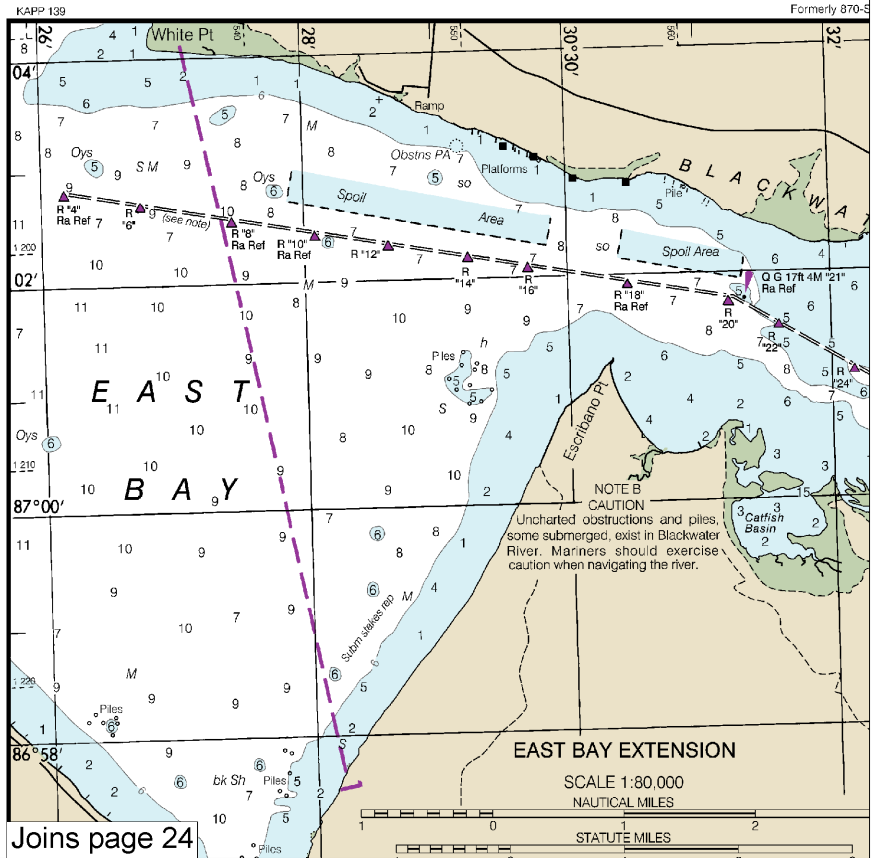
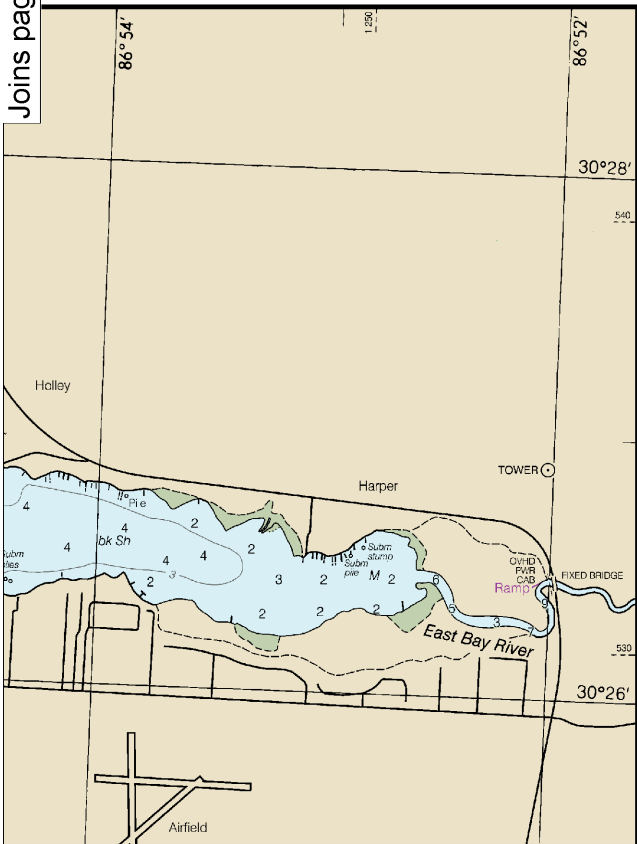
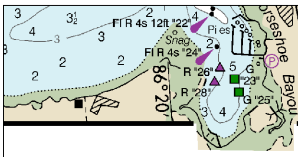
Printed at reduced scale.

SCALE 1:40,000

See Note on page 5.





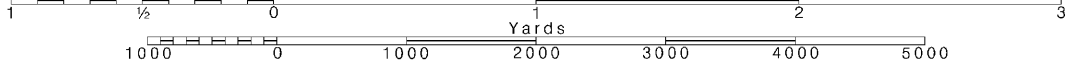


Note: Chart grid lines are aligned with true north.

Printed at reduced scale.

SCALE 1:40,000 Nautical Miles

See Note on page 5.

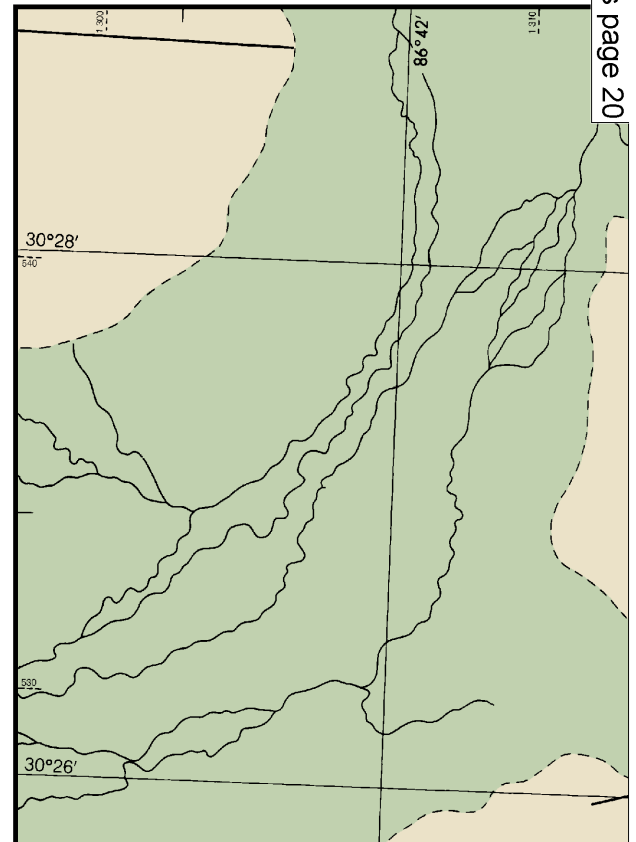
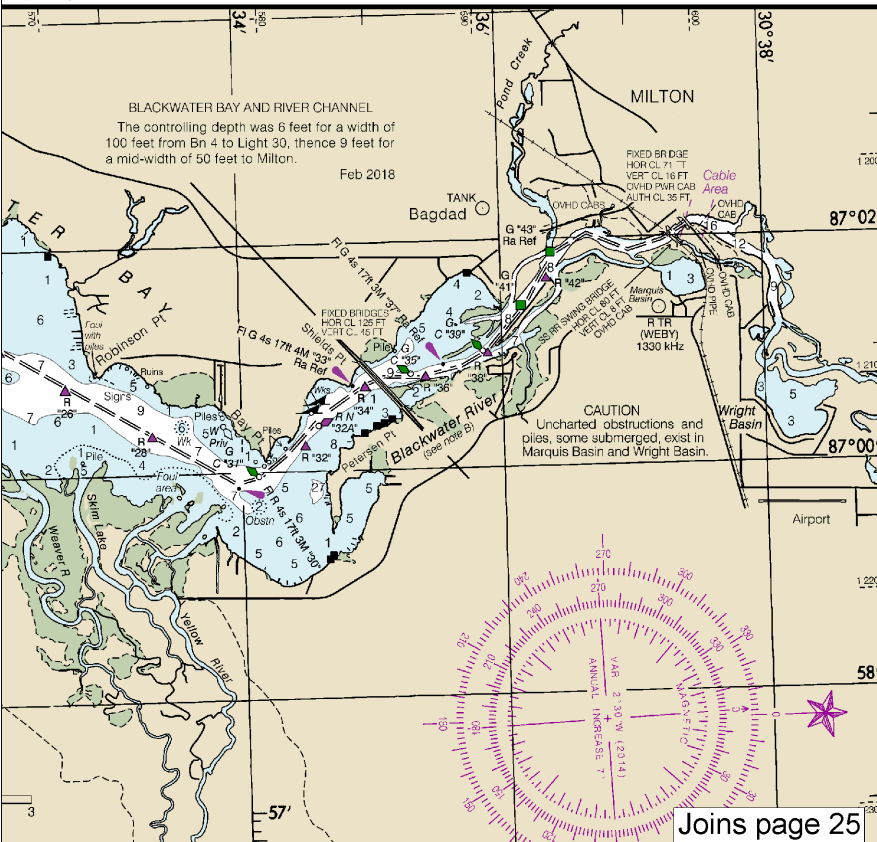


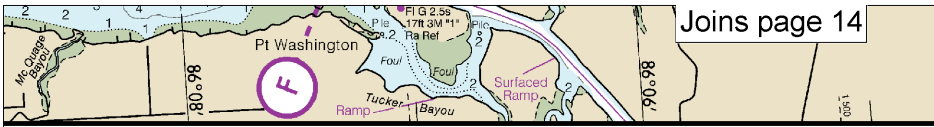
open to a full upright or vertical position, vertical clearance is not available for charted horizontal clearance.

Joins page 13

F

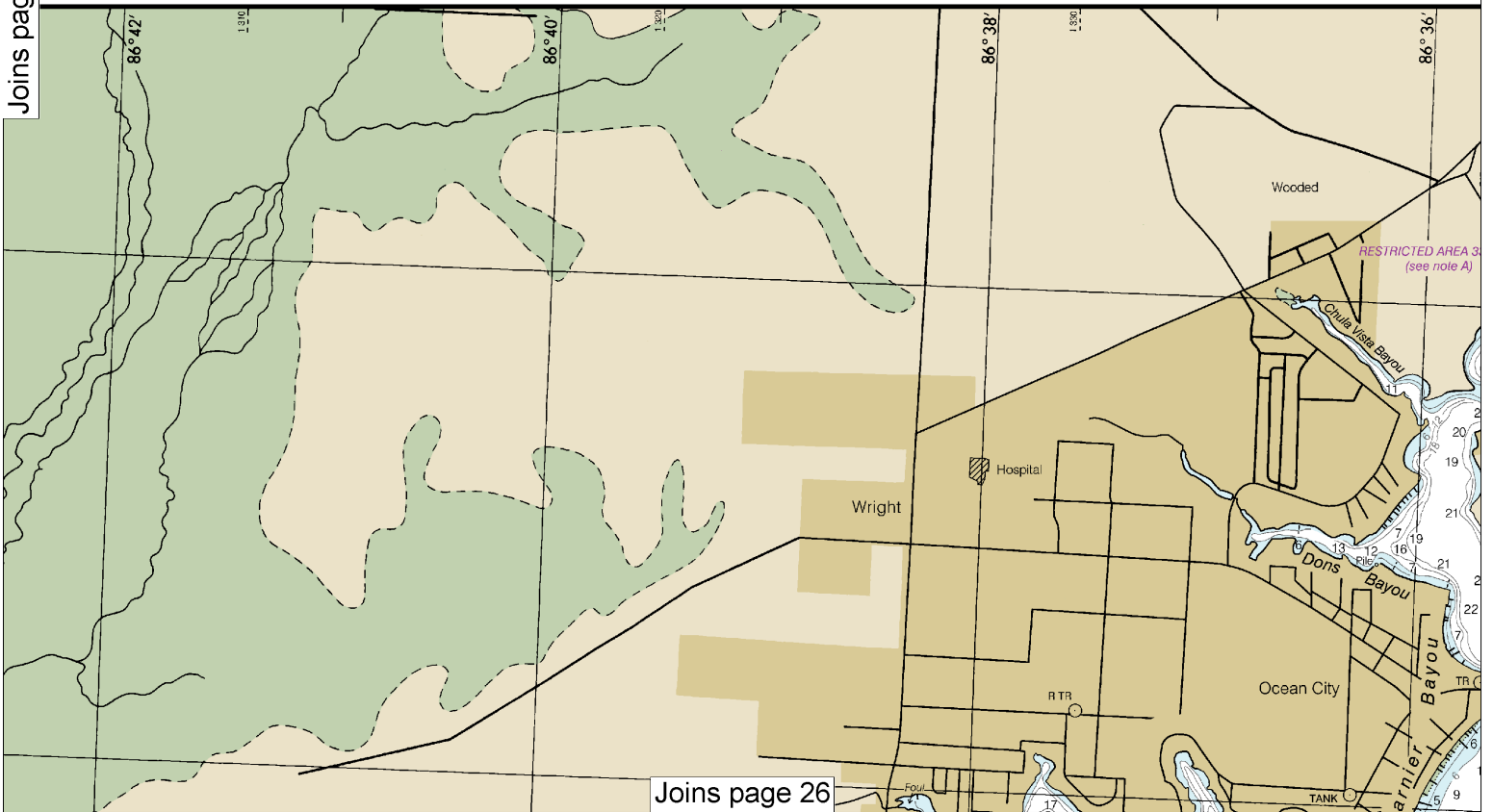
SC, 1st Ed., 1970





Joins page 14

Joins page 19



Joins page 26

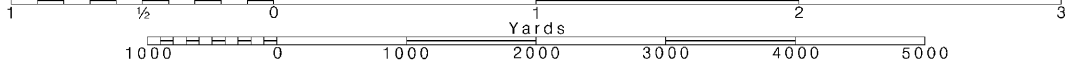
20

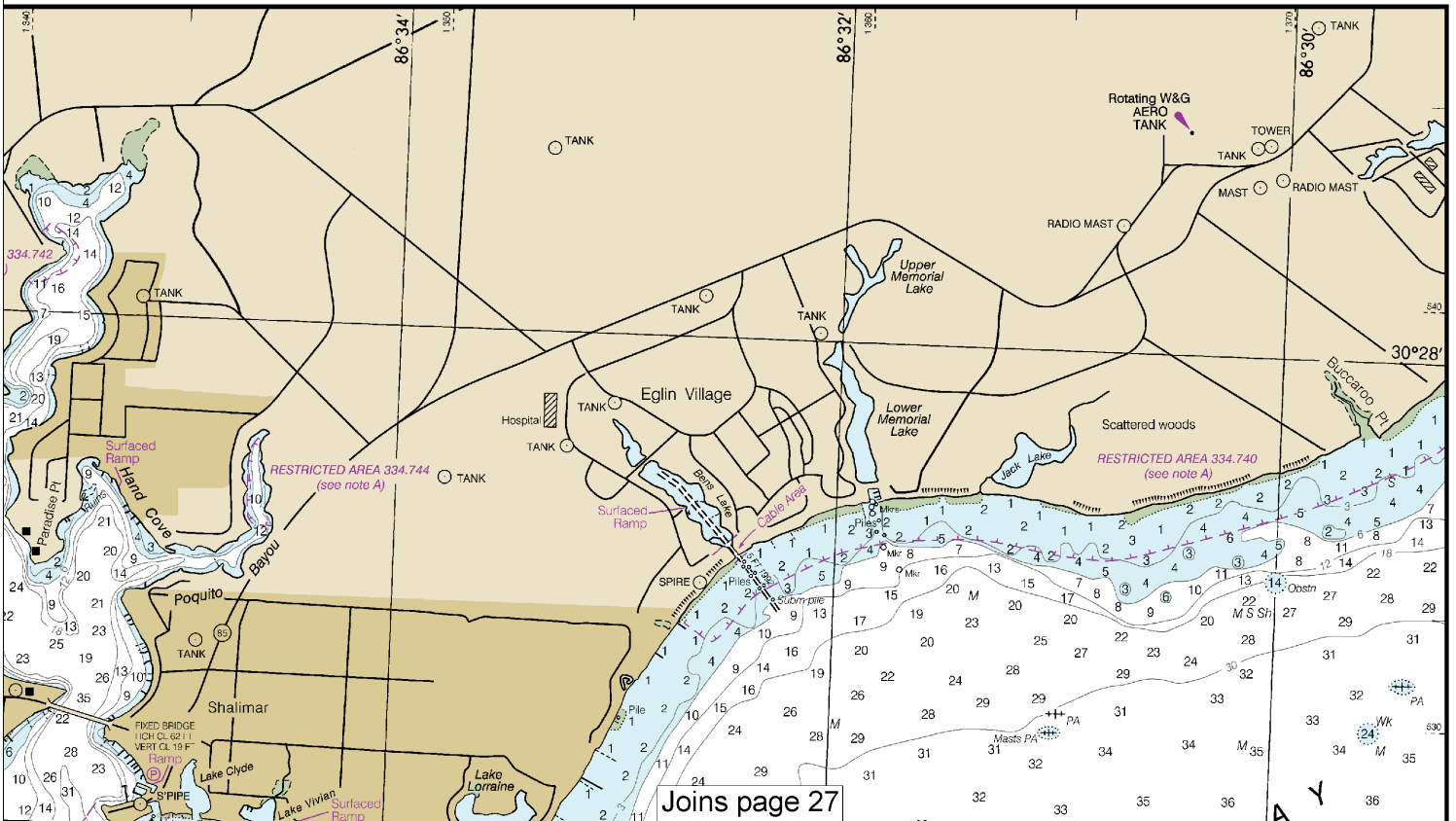
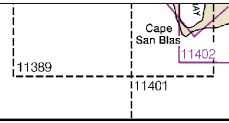
Note: Chart grid lines are aligned with true north.

Printed at reduced scale.

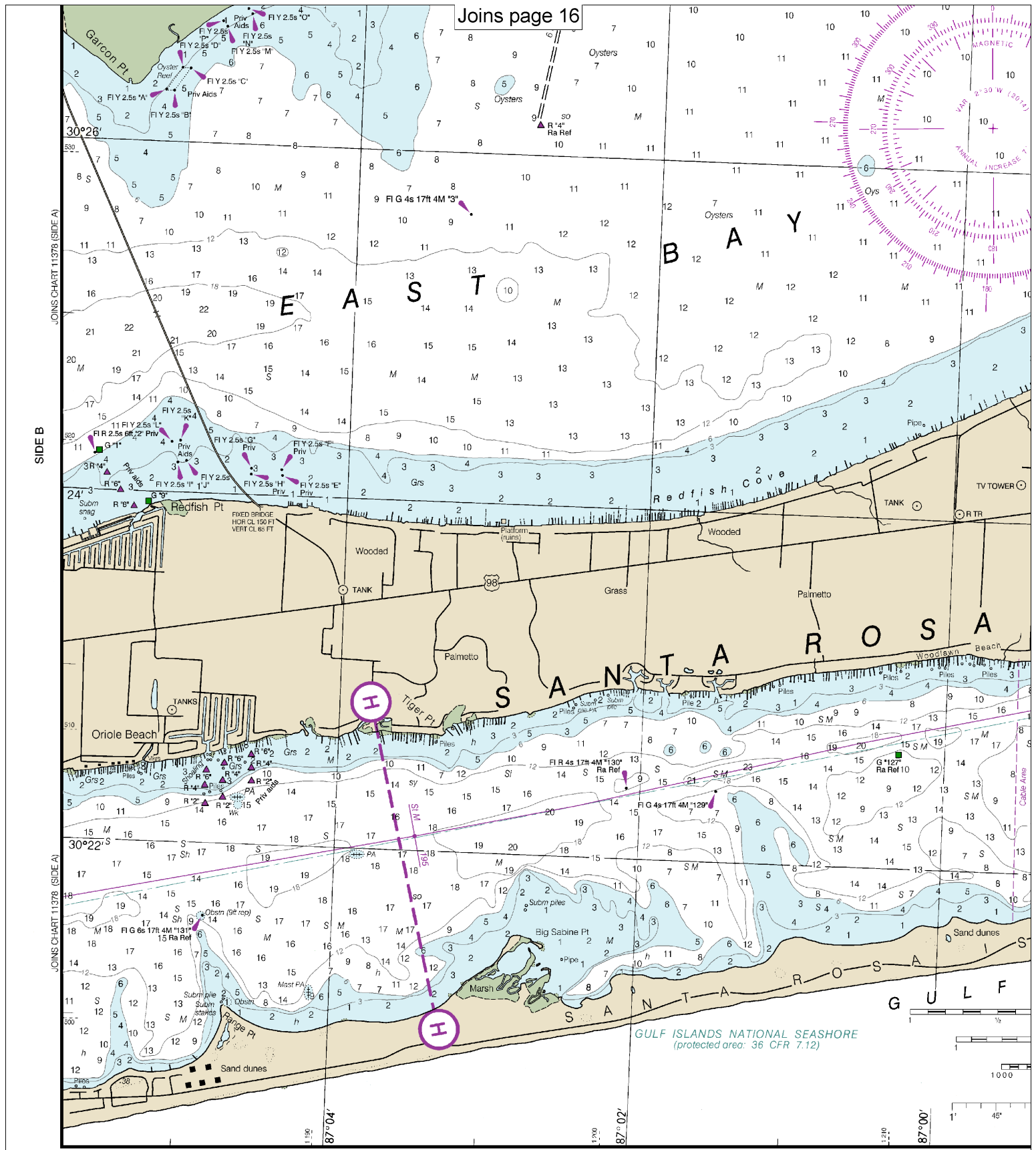
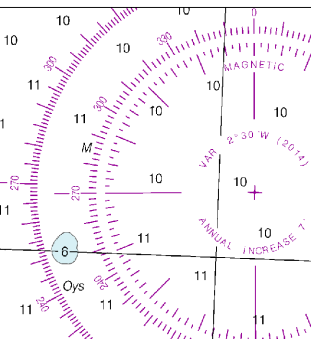
SCALE 1:40,000
Nautical Miles

See Note on page 5.





Joins page 16



11385

Use ENC charts for the most up to date information. References to other charts may no longer be applicable.
 29th Ed., Aug. 2020, Last Correction: 2/2/2022, Cleared through:
 LNM: 1622 (4/19/2022), NM: 1822 (4/30/2022)

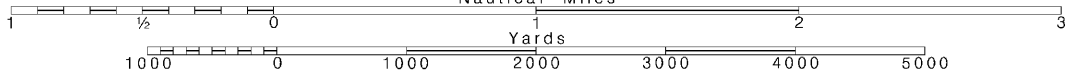
22

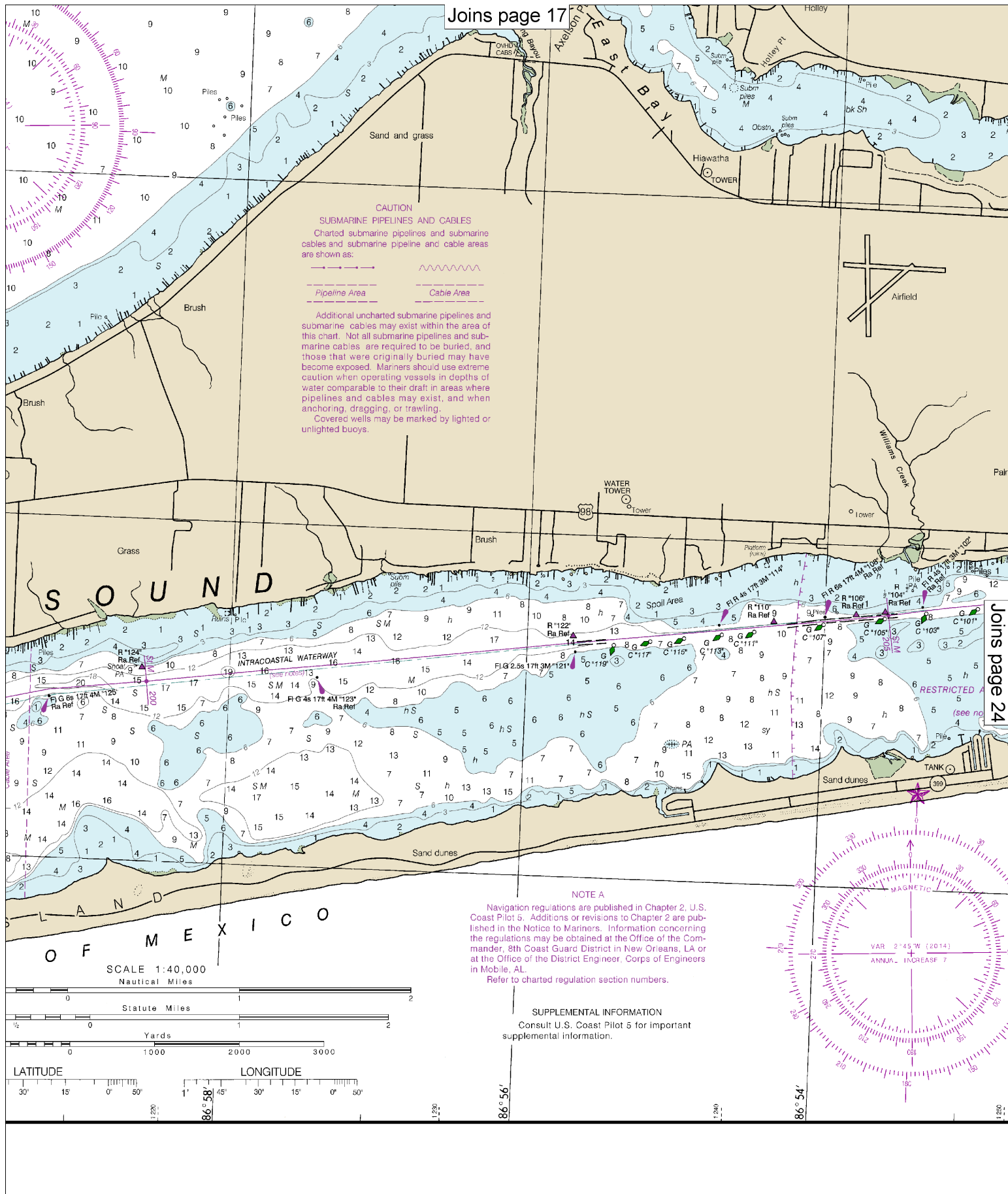
Note: Chart grid lines are aligned with true north.

Printed at reduced scale.

SCALE 1:40,000
Nautical Miles

See Note on page 5.





CAUTION
SUBMARINE PIPELINES AND CABLES
 Charted submarine pipelines and submarine cables and submarine pipeline and cable areas are shown as:



Additional uncharted submarine pipelines and submarine cables may exist within the area of this chart. Not all submarine pipelines and submarine cables are required to be buried, and those that were originally buried may have become exposed. Mariners should use extreme caution when operating vessels in depths of water comparable to their draft in areas where pipelines and cables may exist, and when anchoring, dragging, or trawling. Covered wells may be marked by lighted or unlighted buoys.

NOTE A
 Navigation regulations are published in Chapter 2, U.S. Coast Pilot 5. Additions or revisions to Chapter 2 are published in the Notice to Mariners. Information concerning the regulations may be obtained at the Office of the Commander, 8th Coast Guard District in New Orleans, LA or at the Office of the District Engineer, Corps of Engineers in Mobile, AL.
 Refer to charted regulation section numbers.

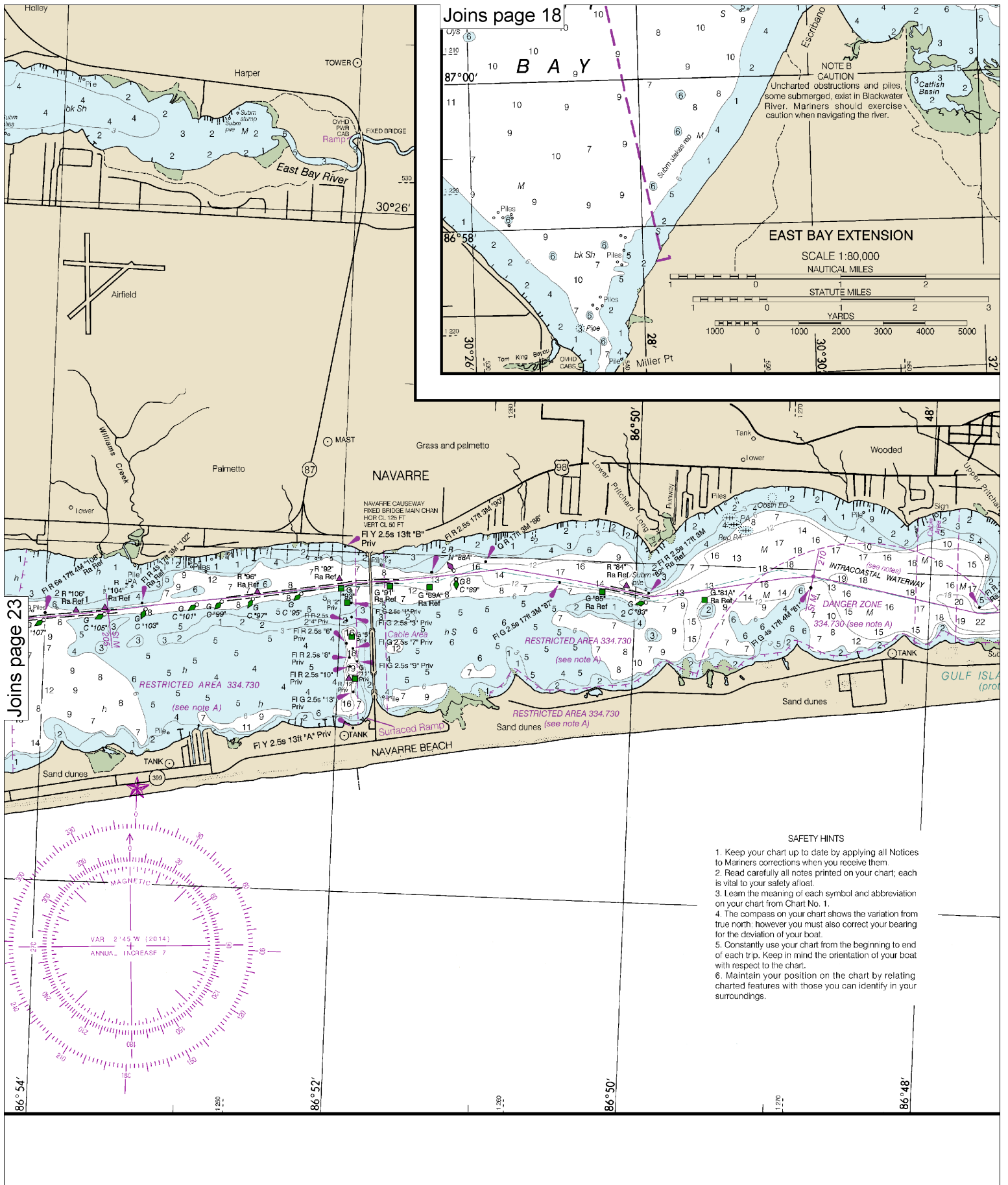
SUPPLEMENTAL INFORMATION
 Consult U.S. Coast Pilot 5 for important supplemental information.

SCALE 1:40,000
 Nautical Miles

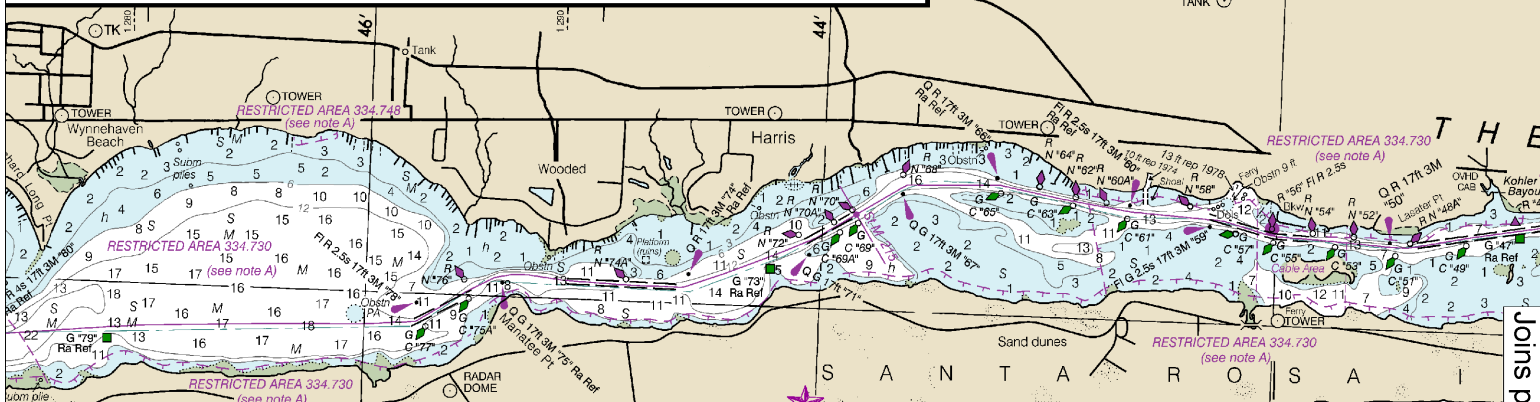
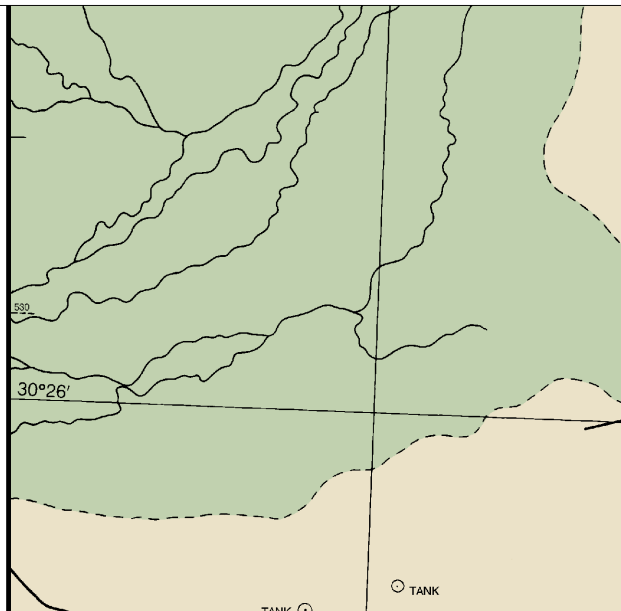
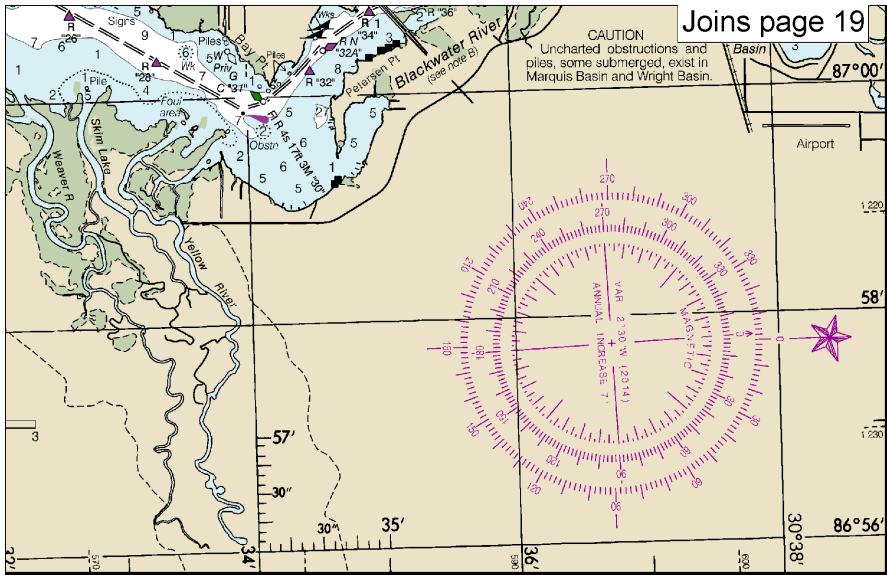
Statute Miles

Yards

LATITUDE LONGITUDE



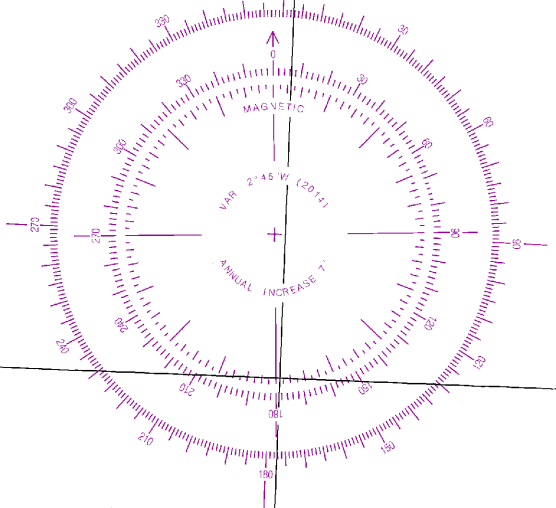
CAUTION
Uncharted obstructions and
piles, some submerged, exist in
Marquis Basin and Wright Basin.



RADAR REFLECTORS
Radar reflectors have been placed on many floating aids to navigation. Individual radar reflector identification on these aids has been omitted from this chart.

PLANE COORDINATE GRID
(based on NAD 1927)
Florida State Grid, north zone is indicated on this chart at 10,000 foot intervals. The last three digits are omitted.

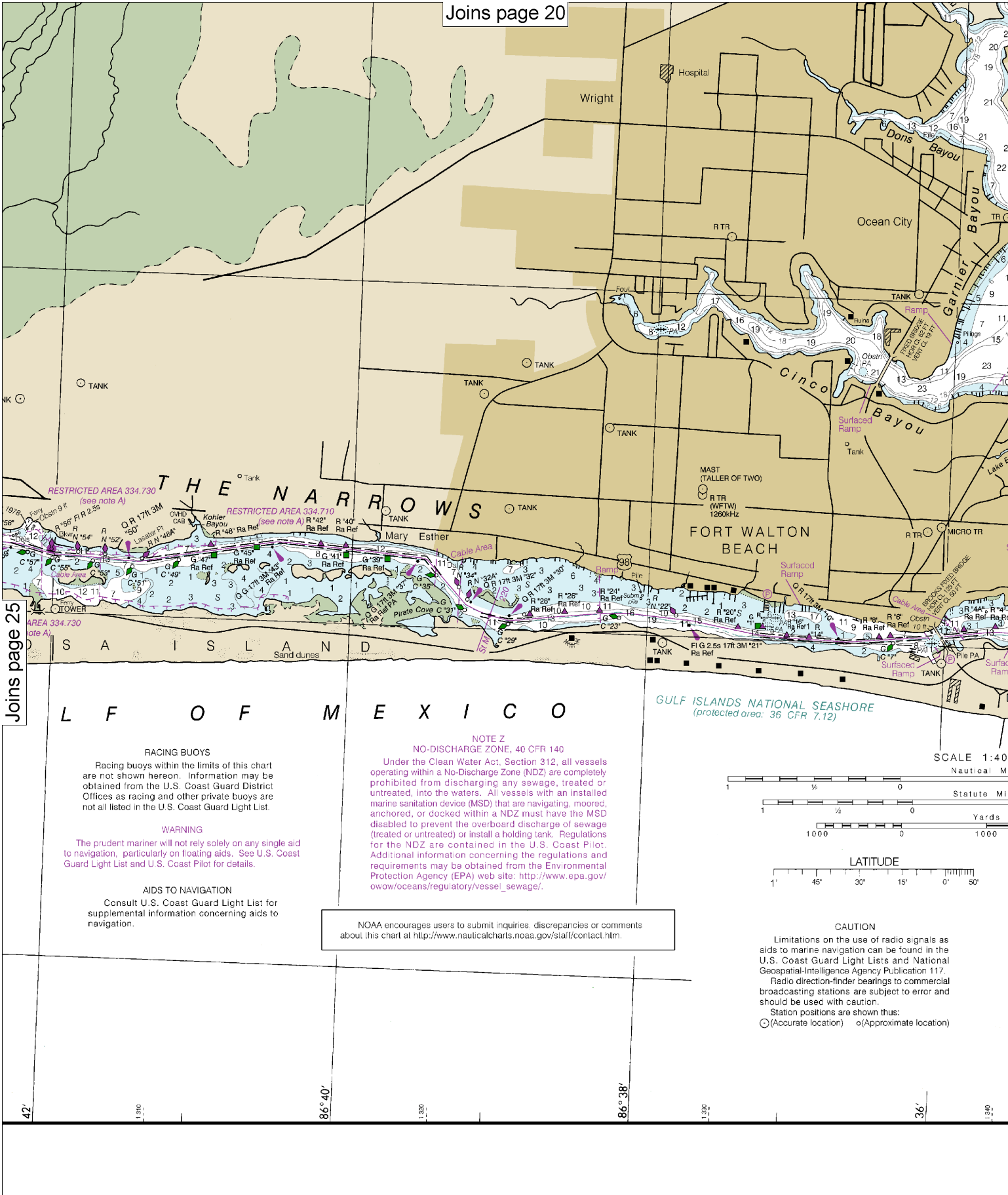
CAUTION
Temporary changes or defects in aids to navigation are not indicated on this chart. See Local Notice to Mariners.
Improved channels shown by broken lines are subject to shoaling, particularly at the edges.



RACING BUOYS
Racing buoys within the limits of are not shown hereon. Information obtained from the U.S. Coast Guard Offices as racing and other private not all listed in the U.S. Coast Guard

WARNING
The prudent mariner will not rely solely to navigation, particularly on floating aid Guard Light List and U.S. Coast Pilot for

AIDS TO NAVIGATION
Consult U.S. Coast Guard L supplemental information concerning navigation.

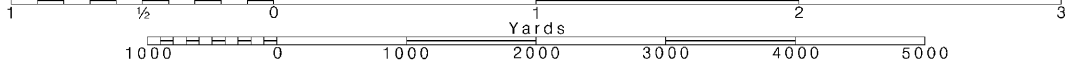


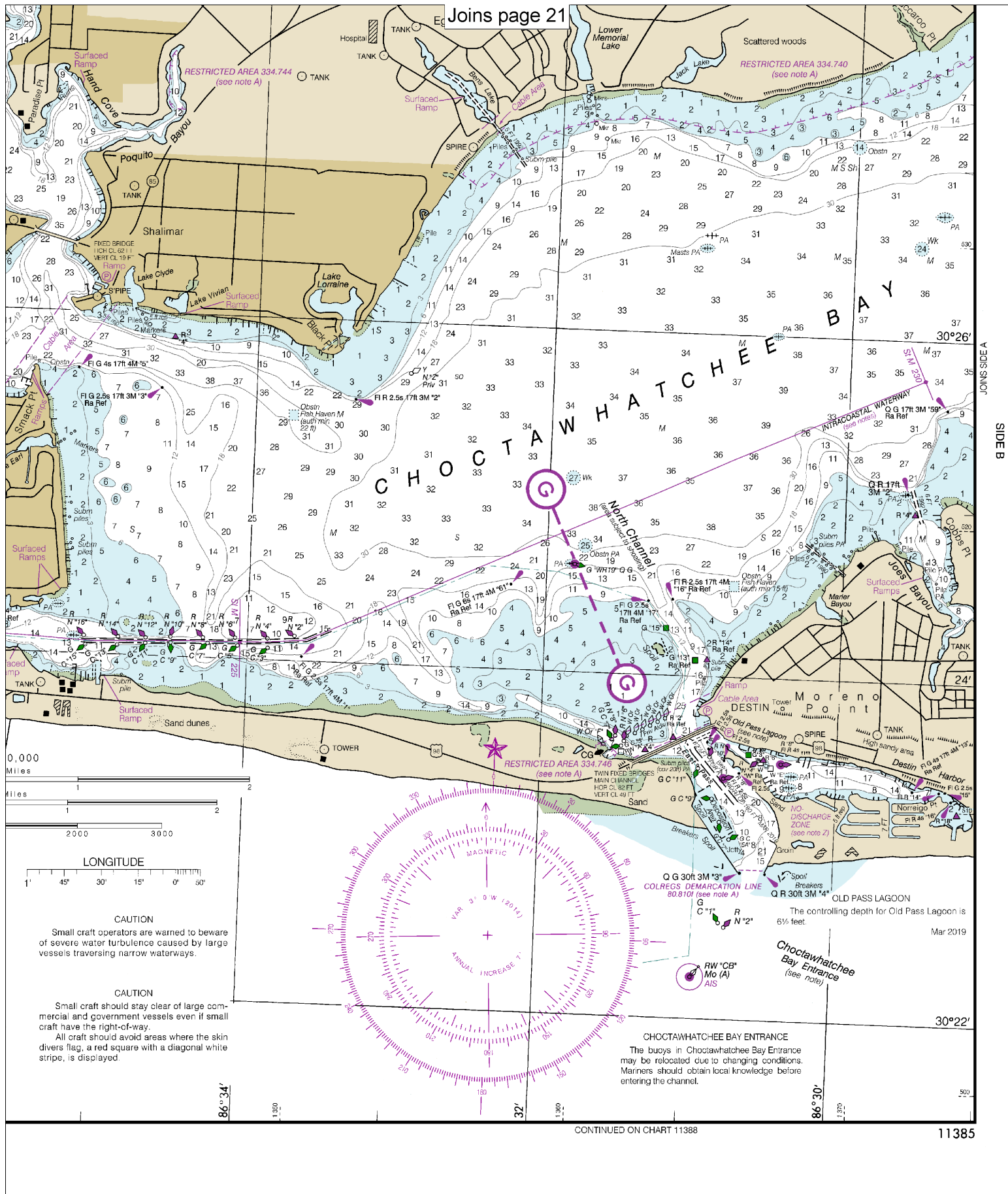
Note: Chart grid lines are aligned with true north.

Printed at reduced scale.

SCALE 1:40,000
Nautical Miles

See Note on page 5.



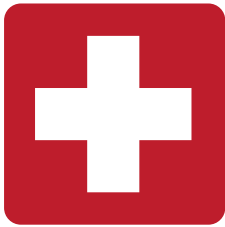


CAUTION
Small craft operators are warned to beware of severe water turbulence caused by large vessels traversing narrow waterways.

CAUTION
Small craft should stay clear of large commercial and government vessels even if small craft have the right-of-way.
All craft should avoid areas where the skin divers flag, a red square with a diagonal white stripe, is displayed.

CHOCTAWHATCHEE BAY ENTRANCE
The buoys in Choctawhatchee Bay Entrance may be relocated due to changing conditions. Mariners should obtain local knowledge before entering the channel.

OLD PASS LAGOON
The controlling depth for Old Pass Lagoon is 6 1/2 feet.
Mar 2019



EMERGENCY INFORMATION

VHF Marine Radio channels for use on the waterways:

Channel 6 – Inter-ship safety communications.

Channel 9 – Communications between boats and ship-to-coast.

Channel 13 – Navigation purposes at bridges, locks, and harbors.

Channel 16 – Emergency, distress and safety calls to Coast Guard and others, and to initiate calls to other vessels. Contact the other vessel, agree to another channel, and then switch.

Channel 22A – Calls between the Coast Guard and the public. Severe weather warnings, hazards to navigation and safety warnings are broadcast here.

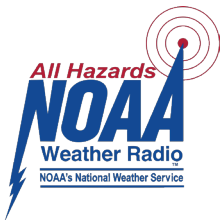
Channels 68, 69, 71, 72 and 78A – Recreational boat channels.

Getting and Giving Help — Signal other boaters using visual distress signals (flares, orange flag, lights, arm signals); whistles; horns; and on your VHF radio. You are required by law to help boaters in trouble. Respond to distress signals, but do not endanger yourself.

Distress Call Procedures

- Make sure radio is on.
- Select Channel 16.
- Press/Hold the transmit button.
- Clearly say: "MAYDAY, MAYDAY, MAYDAY."
- Also give: Vessel Name and/or Description; Position and/or Location; Nature of Emergency; Number of People on Board.
- Release transmit button.
- Wait for 10 seconds — If no response Repeat MAYDAY call.

HAVE ALL PERSONS PUT ON LIFE JACKETS!



NOAA Weather Radio All Hazards (NWR) is a nationwide network of radio stations broadcasting continuous weather information directly from the nearest National Weather Service office. NWR broadcasts official Weather Service warnings, watches, forecasts and other hazard information 24 hours a day, 7 days a week.

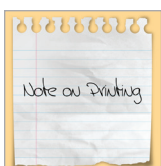
<http://www.nws.noaa.gov/nwr/>

Quick References

- Nautical chart related products and information — <http://www.nauticalcharts.noaa.gov>
- Interactive chart catalog — <http://www.charts.noaa.gov/InteractiveCatalog/nrnc.shtml>
- Report a chart discrepancy — <http://ocsddata.ncd.noaa.gov/idrs/discrepancy.aspx>
- Chart and chart related inquiries and comments — <http://ocsddata.ncd.noaa.gov/idrs/inquiry.aspx?frompage=ContactUs>
- Chart updates (LNM and NM corrections) — http://www.nauticalcharts.noaa.gov/mcd/updates/LNM_NM.html
- Coast Pilot online — <http://www.nauticalcharts.noaa.gov/nsd/cpdownload.htm>
- Tides and Currents — <http://tidesandcurrents.noaa.gov>
- Marine Forecasts — <http://www.nws.noaa.gov/om/marine/home.htm>
- National Data Buoy Center — <http://www.ndbc.noaa.gov/>
- NowCoast web portal for coastal conditions — <http://www.nowcoast.noaa.gov/>
- National Weather Service — <http://www.weather.gov/>
- National Hurricane Center — <http://www.nhc.noaa.gov/>
- Pacific Tsunami Warning Center — <http://ptwc.weather.gov/>
- Contact Us — <http://www.nauticalcharts.noaa.gov/staff/contact.htm>



— For the latest news from Coast Survey, follow @NOAAcharts



This Booklet chart has been designed for duplex printing (printed on front and back of one sheet). If a duplex option is not available on your printer, you may print each sheet and arrange them back-to-back to allow for the proper layout when viewing.