



ADMINISTRATION FOR
CHILDREN & FAMILIES

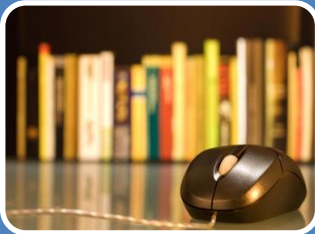


Introducing Early Educator Central: Pathways to Credentials and Degrees for Infant-Toddler Educators July 13, 2015

Today's Presentation



National Landscape



Early Educator Central Resources



Practical Applications



National Landscape: Early Head Start-Child Care Partnerships

- Initiation of the Early Head Start-Child Care Partnerships in 2015
- Ensuring CDA for infant-toddler educators



National Landscape: *CCDBG Act of 2014*

- **Professional development and training:**
 - Ongoing annual training and progression to improve knowledge and skills of CCDF providers.
 - Promote the social, emotional, physical, and cognitive development of children.
 - Incorporate certain health and safety topics for providers receiving CCDF funds.





National Landscape: *CCDBG Act of 2014*

- **ACF strongly encourages States to:**
 - Look at all training, including ongoing annual training, as part of a career pathway;
 - Include credentials and higher education as part of professional development work; and
 - Link CCDF health and safety trainings to a broader professional development framework as the foundation for building a knowledgeable early childhood education workforce.



Early Educator Central Resources

An exciting new Web site, Early Educator Central, for release in Summer 2015, prioritizing infant and toddler educators:

- Leverages existing federally funded coursework from ACF, Department of Defense, and the Centers for Disease Control and Prevention.
- Courses are part of a career pathway that lead toward a credential or degree.



Early Educator Central Resources

Career Pathways

No matter what your infant toddler career pathway is, you'll find resources organized by your role to build competency and your impact. On track for a Child Development Associate (CDA™), Associate in Arts (AA) or Bachelor of Arts (BA) for yourself or your staff? Go to [Teachers](#) or [Administrators](#). Looking to strengthen your skills as a coach, trainer or consultant? Go to [Trainer/Coaches](#). Designing curriculum? Go to [Professional Development \(PD\) System Leaders](#).



Teachers

All Teachers - Child Care, Early Head Start, EHS-CC Partners, center or home-based



Administrators

Directors, Education Coordinators, Instructional Leaders



Trainers/Coaches

Trainers, Coaches, Consultants, Specialists, Technical Assistants who support teachers and programs to deliver quality infant-toddler services



PD System Leaders

Higher education, curriculum designers, policy makers



Early Educator Central Resources

A valuable new asset that supports multiple priorities:

- Training and career pathways under CCDF;
- Essential state and territory PD planning and implementation to respond to reauthorization; and
- New Early Head Start-Child Care Partnerships.



Project Partners

- ACF Offices of Child Care and Head Start: Jointly funded and administered by OCC and OHS;
- Project Partnership: ICF International in collaboration with Zero to Three and NAEYC:
 - ICF Lead: Harriet Dichter;
 - ZERO TO THREE Lead: Allyson Dean; and
 - NAEYC Lead: Alison Lutton.
- Expert Panel: 35 individuals—state leaders, higher education representatives, infant-toddler teachers, early childhood program administrators, and policy analysts who provide input into content development and outreach plans.



Early Educator Central Resources: Coursework

Coursework	Course Developer	Intended Audience
<u>Department of Defense Virtual Lab School Infant Toddler Track</u>	The Ohio State University	Infant Toddler Educators Administrators
<u>Better Kid Care</u>	Penn State Extension Better Kid Care Program	All Early Learning Educators Administrators
<u>Online Infant Toddler Associate of Arts (A.A.) curriculum</u>	University of Cincinnati	Infant Toddler Educators Course Developers and Higher Education Professionals PD System Planners
Infant Toddler Consultant Curricula <u>Relationships: The Heart of Development and Learning</u> <u>Infant Toddler Development, Screening, and Assessment</u> <u>Infant Toddler Curriculum and Individualization</u>	ZERO TO THREE	Coaches and Trainers PD System Planners



Early Educator Central Resources: Coursework

Coursework	Course Developer	Intended Audience
<u>Family Connections: A Preventive and System-Wide Training Guide and Mental Health Consultation Model</u>	Boston Children's Hospital	Administrators Coaches and Trainers PD System Planners
<u>Center for Early Childhood Mental Health Consultation's Best Practice Tutorial Series</u>	Georgetown University	Administrators Coaches and Trainers PD System Planners
<u>Center on the Social and Emotional Foundations for Early Learning (CSEFEL) Infant Toddler Training Modules</u>	Vanderbilt University	Infant Toddler Educators
<u>Watch Me! Celebrating Milestones and Sharing Concerns</u>	Centers for Disease Control and Prevention	Teachers



Early Educator Central: Tools & Resources

Early Educator Tools	Overview
Observation Tool	An open-source, online digital observation tool that teachers can use to record themselves and share with others to help improve their practice
Coursework Framework	A self-assessment tool for course developers to ensure their courses deliver on a “Know-See-Do-Improve” competency framework
Articulation Agreement Templates and Samples	Templates and samples Articulation Agreements to support development of career pathways with portable degrees and credentials
Articulation Guide for State Policymakers	Practical advice about articulation



Early Educator Central: Tools & Resources

Early Educator Tools	Overview
Guide to successfully including Family Child Care in higher education coursework	Guide by experienced higher faculty about how to successfully include family child care providers
Supporting Infant Toddler Coursework in Early Childhood Higher Education Brief	Strategies for ensuring infant-toddler issues are addressed in higher education coursework
Compensation for the Infant Toddler Workforce Brief	Information about improving compensation for infant-toddler educators
Topical annotated bibliography on key topics for infant-toddler course developers: dual language learners, poverty, race and culture, and STEM	Materials to help build higher education coursework focusing on infants and toddlers in priority content areas



Early Educator Central: Tools & Resources

- An online professional development system cost calculator;
- Informs planning and development of state professional development with a focus on credit-bearing credentials and degrees; and
- Helps planners understand costs associated with helping early childhood professionals gain degrees and credentials.





How Can the PD System Cost Tool Help?

The tool helps planners answer questions like:

- What qualifications does your workforce currently have?
- What qualifications do you need or want it to have?
- What do you need to target to help meet your goals of building and retaining a qualified workforce?



Cost Analysis Tool Specifics

- State and PD System planners can use the PD System Cost Analysis tool to identify, generate, and analyze data related to workforce qualifications and PD investments.
- States and Territories can enter baseline data about their workforce to create an auto-generated comparison to the national estimates from the National Survey of Early Care and Education.

Want More Information?

- Sign up for an introduction to PD Cost Tool during STAM- go to the registration desk.
- Sign up for an introduction to Early Educator Central during STAM- go to the registration desk.
- Visit Early Educator Central
<https://earlyeducatorcentral.acf.hhs.gov/>





ADMINISTRATION FOR
CHILDREN & FAMILIES



Thank You and Questions!





Early Childhood Workforce and Planning in Michigan

Increasing Access

- On-line coursework
- Targeted T.E.A.C.H. Scholarships
 - Home Based providers
 - Special Endorsement



Transferability

- Block transfer agreements
- NAEYC Accreditation



Questions?





Early Childhood Workforce Planning and PD in North Carolina

PD Infrastructure

- Shift to CEU's
- Study Profesional Development needs
- Focus on program administrators



Systemic Features

- Coordinated workforce planning
- T.E.A.C.H.
- WAGES
- Articulation
- Workforce Study

Implications

- Can we shift the system and count what really counts for children and families?
- Can we build a tipping point for TA/PD providers to effectively meet demand?
- Can administrator/teacher capacity to meet QRIS test model requirements also build support to shift requirements?

Stay tuned to find out!!!

Questions?

