

INTRODUCTORY  
ARCHITECT & DESIGNER  
NEWSLETTER FALL 2020

## OUR PRODUCTS

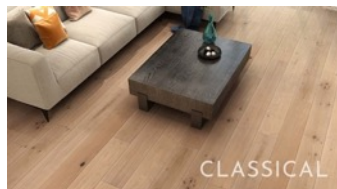
Welcome to our first Newsletter, specifically created for the design & architect community. Opus provides collaboration, architect & designer kits and guidance as you request.

Opus flooring products are accessible to you in innovative chip size flooring samples in our **unique** Architect and Designer Kits (see page 6-8) that are organized with colours and textures which duplicate in several platforms (**Good, Better, Best**). Products are available through our network of over 250 dealers across Canada. Opus also provides **customizable** flooring solutions.

Opus Floors is well on its way to achieving its goal of providing exceptionally constructed, eco minded, healthy flooring products with a low carbon footprint, and now with the Green Flow Cork flooring collection, Even a **negative carbon footprint!**

We look forward to having you join us on this journey!

President  
Vernon Verkley



**CLASSICAL SERIES**  
-Engineered Hardwood  
T $\frac{3}{4}$ " x W7  $\frac{1}{2}$ " x L6'3", 10 ply  
Available in **plant** based **natural oil** & Germany UV lacquer finishes

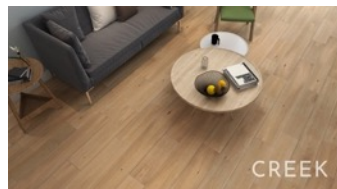
**GREEN FLOW SERIES**  
-Natural Cork Flooring  
W 7-31/64" x L48-15/64"  
**Negative carbon footprint**



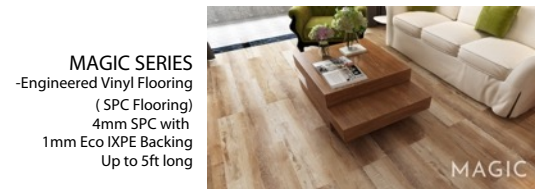
**SHAWNEE SERIES**  
-Engineered Hardwood  
 $\frac{3}{4}$ " thick, 6" to 7  $\frac{1}{2}$ " wide, 10 ply



**MAESTRO SERIES**  
-Engineered Vinyl Flooring (WPC Flooring)  
1.5mm Vinyl + 4mm WPC + 1.5mm premium cork backing  
Up to 5ft long

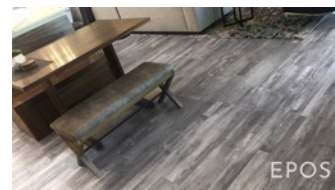


**CREEK SERIES**  
-Engineered Hardwood  
 $\frac{1}{2}$ " thick, 7  $\frac{1}{2}$ " wide, 6 ply



**MAGIC SERIES**  
-Engineered Vinyl Flooring (SPC Flooring)  
4mm SPC with 1mm Eco IXPE Backing  
Up to 5ft long

**EXPOSITION SERIES**  
-Water resistant Laminate Flooring and regular Laminate Flooring  
Up to 7'3" long



**EPOS SERIES**  
-Luxury Vinyl Plank (LVT Dryback Flooring)



Sign Up For Our Newsletters »

## Bamboo & Cork: Repositioning in a waterproof world

Home ◇ Categories ◇ Bamboo & Cork: Repositioning in a waterproof world

By Reginald Tucker

## OPUS FLOORS CANADA

### Ongoing innovations



*Opus Floors' ultra-high-resolution digital print program offers visuals such as wood and concrete looks and natural mosaic patterns.*

Advancements in cork go well beyond designs and waterproof performance. Suppliers have also made improvements in areas such as core construction and antimicrobial technologies. A prime example of this innovation can be found in the newly launched Green Flow program from Calgary, Canada-based **Opus Floors**, a supplier of several innovative hard surface products, including cork. "Most visuals currently available in cork resemble the natural cork look, but with our ultra-high-resolution digital print program, we can offer retailers everything from wood visuals to concrete looks to natural mosaic patterns," said Vern Verkley, owner. "The digital technology used in producing the visuals for the product offers fewer repeats in the patterns, making for a more beautiful, natural looking floor."

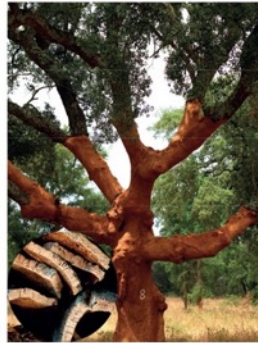
## WEBINAR PRESENTATION



Opus can provide a webinar presentation on Opus products to designers with your firm.  
Please contact your sales representative to set up schedules!

# INTRODUCING **GREEN FLOW**

100% NATURAL CORK FLOORING, PVC FREE



- ① HIGH PERFORMANCE ADVANCED NANO HRF FINISH
- ② GENUINE CORK VENEER
- ③ AGGLOMERATED CORK IMM
- ④ 100% SOLID CORK CORE
- ⑤ ANGLE / ANGLE CLICK SYSTEM
- ⑥ SILENT CORK UNDERLAY  
For improved acoustic insulation and comfort.



- ① HIGH PERFORMANCE ADVANCED NANO HRF FINISH
- ② HIGH QUALITY DIGITAL PRINT-1000DPI  
Printed on Genuine Cork Veneer
- ③ AGGLOMERATED CORK IMM
- ④ 100% SOLID CORK CORE
- ⑤ ANGLE / ANGLE CLICK SYSTEM
- ⑥ SILENT CORK UNDERLAY  
For improved acoustic insulation and comfort.



- ① HIGH PERFORMANCE ADVANCED NANO HRF FINISH
- ② HIGH QUALITY DIGITAL PRINT-1000DPI  
Printed on Genuine Cork Veneer
- ③ AGGLOMERATED CORK IMM
- ④ 100% SOLID CORK CORE
- ⑤ ANGLE / ANGLE CLICK SYSTEM
- ⑥ SILENT CORK UNDERLAY  
For improved acoustic insulation and comfort.

**Solid Cork Core** made with a revolutionary new technology by creating an engineered compressed cork core, which is completely stable and allows **Green Flow** to be installed in any residential or commercial project.



 DESIGN	 COMFORT	 WARMTH	 QUIET
 NEGATIVE CO <sub>2</sub> FOOTPRINT	 INDOOR AIR QUALITY	 WATERPROOF	 PVC FREE

**Standard Sizes:**  
1225 x 190 x 7mm  
48-15/64" x 7-31/64" x 9/32"

**Box Content:**  
1.862 m<sup>2</sup>  
20.04 sqft

**Pallet Content:**  
81.928 m<sup>2</sup>  
881.87 sqft

910 x 300 x 7mm\*  
35-53/64" x 11-13/16" x 9/32"

2.184 m<sup>2</sup>\*  
23.51 sqft

78.624 m<sup>2</sup>\*  
846.36 sqft

Please contact your local representative for more information.





## SILENT CORK UNDERLAY

100% natural cork,  
Negative Carbon Footprint!

*Making the lives of our Customers, Dealers, Associates and Community better.*

**Opus Floors Canada Corp.**  
[www.opusfloors.ca](http://www.opusfloors.ca)

## NATURAL ACOUSTIC SILENT CORK UNDERLAY

### WALKING COMFORT

### RESILIENCE & COMPRESSIBILITY

### RESISTANCE & FLEXIBILITY



### THERMAL INSULATOR

### ACOUSTICAL INSULATOR

### HYPOALLERGENIC



**PACKING:** 50sheets/carton for 6mm

**PACKING:** 100sheets/carton for 3mm

**QUANTITY:** 300sqft/ctn for 6mm

**QUANTITY:** 600sqft/ctn for 3mm

**THICKNESS:** 1/8"(3mm)& 1/4"(6mm)

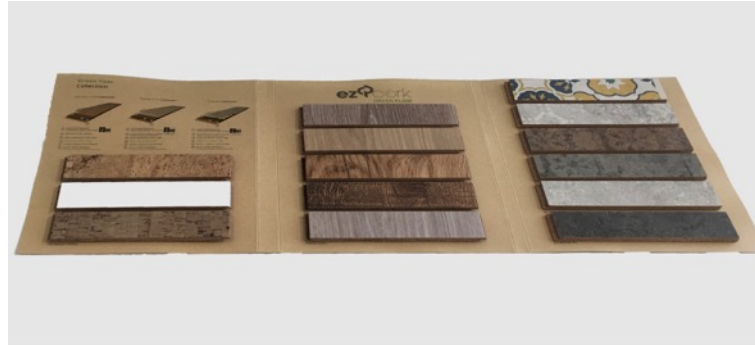
**WIDTH:** 24" (610mm)

**LENGTH** 36" (914mm)

**Just Arrived!**

## GREEN FLOW CORK ARCHITECT & DESIGNER KITS

Green Flow can assist in  
attaining as many as  
**6 LEED®** credits



- Please contact your sales representative for Interior Design Library samples.
- Our Commitment to The Environment: We are working with you to keep samples out of landfill & to reuse them.
- Please contact us to return samples when a project is finished.

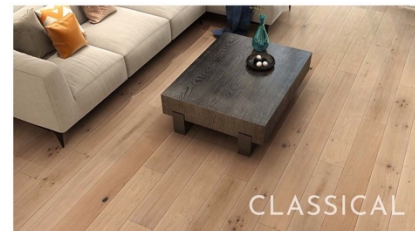
# HARDWOOD ARCHITECT & DESIGNER KITS



12/3 x 190 x Random Length (approx 3/4" x W7 1/2" x Random Length) **Angel Oak**



18/4 x 150 x Random Length (approx 3/4" x W6" x Random Length) **Mayfield Walnut II**



18/4 x 190 x 1900mm (approx 3/4" x W7 1/2" x 6'3") **Mozart Oak**

## Creek Series



## Shawnee Series



## Classical Series



<b>Good</b>	<b>Better</b>	<b>Best</b>
<b>Creek Series</b>	<b>Shawnee Series</b>	<b>Classical Series</b>
1/2" x 6 1/2" - 7 1/2" Random Length	3/4" x 6" Random Length	3/4" x 7 1/2" x 6'2" - 6'3" Fixed Length Proportion: Oak 85%/Maple 33%
6 ply	10 ply	10 ply
Eucalyptus & Poplar Core	Eucalyptus & Poplar Core	Eucalyptus & Poplar Core
UV Oil/UV Urethane	UV Urethane	Natural Oil*/UV Urethane
2-3mm wearlayer	4mm wearlayer	4mm wearlayer
Nail/Float/Glue down	Nail/Float/Glue down	Nail/Float/Glue down
Radiant Heat Approved	Radiant Heat Approved	Radiant Heat Approved
Meets CARB2 Standard	Meets CARB2 Standard	Meets CARB2 Standard
Designed & Manufactured Eco Friendly	Designed & Manufactured Eco Friendly	Designed & Manufactured Eco Friendly

**SUPERIOR WEARLAYER and MULTIPLY CONSTRUCTION for LONGER LIFE & GREATER STABILITY**

Opus **Classical Series** engineered hardwood floors are finished with either UV Urethane or Osmo Polyx®-Oil. This **NATURAL** product uses the newest most advanced **NATURAL** processes. The finishes are derived from natural plant, vegetable oils and waxes. These **\*NATURAL Oils** are microporous and molecularly bond with the wood, meaning no cracking, flaking or peeling. Open pores allow for absorption of VOCs for healthier air. When adequate amounts of **Osmo Polyx®-Oil** are present, the floor will be resistant to water, dirt, beer, wine, cola and saliva. Using regular cleaning and maintenance with oil soap (**Osmo Wash and Care**) will postpone the need for eventual application of maintenance oil to rejuvenate and maintain floor protection.

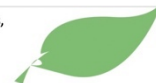
Opus **Creek Series** engineered hardwood floors are finished with either UV Urethane or WOCA UV Oil. **\*\*UV Oil** finish has similar properties to Natural oil, however it is sealed by UV light which requires less maintenance than Natural oil finishes. Eventually, UV Oil will require an application of maintenance oil similar to Natural Oil products. Both Natural Oil and UV Oil finishes require the correct maintenance to ensure optimum levels of protection. UV Oil (WOCA) and Natural Oil (**Osmo**) finishes must be maintained with recommended maintenance products.

The advantages of UV Oil/Natural Oil finishes vs. UV Urethane finishes are that they can be spot-repaired and/or restored/renewed, and in most cases with no sanding required at lower cost and disruption. UV Urethane finishes are able to resist absorption of stains and spills longer than either UV or Natural Oil finishes.

Print & download at [www.opusfloors.ca](http://www.opusfloors.ca)



Products listed can and do change, to confirm current products, to view larger images and to get more information, please visit [www.opusfloors.ca](http://www.opusfloors.ca)



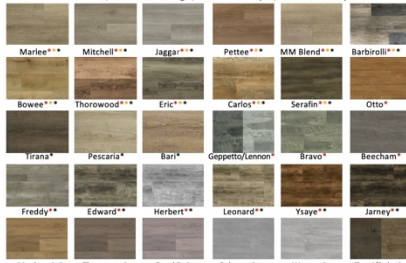


# VINYL/LAMINATE ARCHITECT & DESIGNER KITS



1520 x 181 x 7mm (approx L5' x W7") Bowee Plus

\*available in Maestro, \*available in Magic, \* available in Epos, \*available in Exposition



1215 x 196 x 12mm (approx L48" x W77") Mackenzie Oak II, also available in regular laminate



1500 x 180 x 5.2mm (approx L5' x W7") Carlos Plus



1230 x 192 x 2.5mm (approx L48" x W77") Freddy Oak

Series	Maestro	Magic	Epos	Exposition
Construction	1.5mm Vinyl/4mm WPC with 1.5mm Premium Cork Backing	4mm SPC with 1mm Eco IXPE Backing	LVT Virgin PVC	12mm Laminate HDF core
Size	7mm thick x 6-12" wide	5mm thick x 7" wide	2.5mm thick x 6-9 1/4" wide	12mm thick x 7 1/4" wide
Wearlayer	Commercial 12mil Wearlayer	Commercial 12mil Wearlayer	Commercial 20mil Wearlayer	Scratch Resistance Wearlayer
Installation	Click *Hides Minor Subfloor Flaws	Click *Hides Minor Subfloor Flaws	Glue Down *See installation instruction	Click *See installation instruction
Stability	Resists water without damage to flooring No T mold until 40' Stable in lab to 65°C	Resists water without damage to flooring No T mold until 50' Stable in lab to 80°C	Resists water without damage to flooring N/A Stable to 40°C	N/A No T mold until 42' Stable to 36°C
Radiant Heat	OK with approved/properly functioning systems	OK with approved/properly functioning systems	OK with approved/properly functioning systems	OK with approved/properly functioning systems
Warmth Sound Comfort	Superior Warmth, Comfort & Sound Reduction (Air in Core), Vinyl top & Cork Backing	Additional Comfort and Sound reduction with SPC core and Eco IXPE underlay	PVC for warmth and comfort	3mm IXPE underlay required for further comfort and sound reduction
Environment	Phthalate Free No Formaldehyde	Phthalate Free No Formaldehyde	Phthalate Free No Formaldehyde	Phthalate Free Carb II compliant (regular laminate E1 Rated)
Special Features	Floor Score	Floor Score	Floor Score	CE Rated
	<b>SUPERIOR WARMTH, COMFORT and SOUND REDUCTION</b>	OK 3 seasons SUNROOMS/COTTAGES with 4 <sup>th</sup> season unheated Builder Budget Valued	Heavy commercial rated Commercial Project Valued	Registered embossed Premium Laminate



Print & download at [www.opusfloors.ca](http://www.opusfloors.ca)



Products listed can and do change, to confirm current products, to view larger images and to get more information, please visit [www.opusfloors.ca](http://www.opusfloors.ca)



## NEW PRODUCTS

**LONGER** **WIDER**  
**7** × **9"**  
Foot Plus! Wide



### Arriving in Oct!

Expo Max  
(7' 3" long, water resistant, 5G click)  
approx. 1/2" x 9 3/8" wide x 7'3" long  
12 x 239 x 2200mm



## NEW PRODUCTS

### Alton Oak III New Wider Planks!

**Arriving in Sept!**

Shawnee series- engineered hardwood  
(natural look, wider)  
approx. 3/4" x 7 1/2" wide x Random Length  
18mm x 190mm x Random Length





## NEW PRODUCTS

**Gazelle Oak**  
**Wide Hot New**  
**Scandinavian Colour!**

**Arriving in Sept!**

Shawnee series- engineered hardwood  
(natural look, UV Oil, wider)  
approx. 3/4" x 7 1/2" wide x Random Length  
18mm x 190mm X Random Length



## NEW PRODUCTS

**Longer, wider, cleaner  
less pattern repeat!**

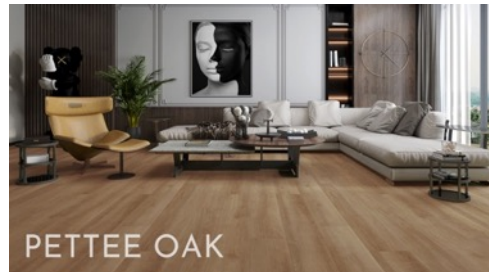


**Arrived!**

Maestro Plus  
(Corked backed WPC Click Floating)  
7 x 228 x 1520mm  
approx. 1/4" x 9" x 60"

Magic Plus  
(IXPE Backed SPC Click Floating)  
5.2 x 228 x 1500mm  
approx. 1/5" x 9" x 60"

Epos Series  
(LVT, Dryback Glue Down)  
2.5 x 240 x 1230mm  
approx. 1/10" x 9 1/2" x 48 1/2"





*Opus Floors Canada Corp.*

# ARCHITECT & DESIGNER NEWSLETTER

## OPUS FLOORS



You are a valued member of our community, and we'd love to have you help us continually improve. If you have any queries or feedback, feel free to notify us so we can assist you further.

[info@opusfloors.ca](mailto:info@opusfloors.ca)

Tel: 1 (800) 653 6177

Fax: 1 (866) 506-6448

[www.opusfloors.ca](http://www.opusfloors.ca)