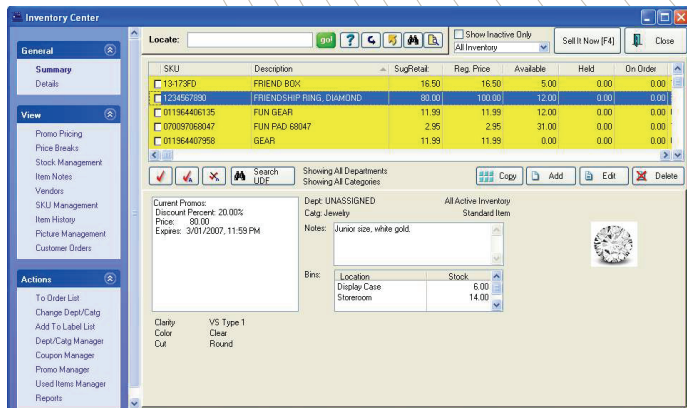


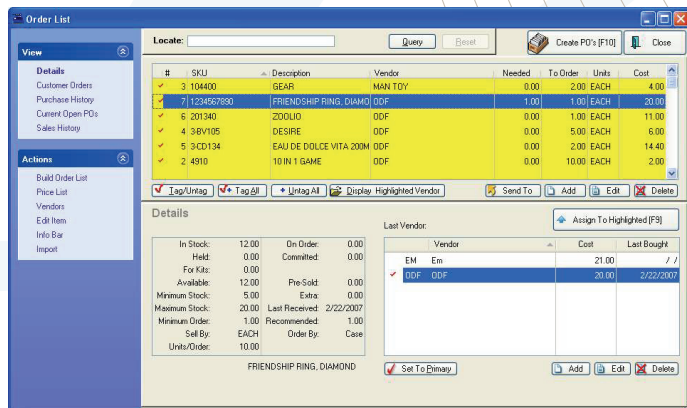


Inventory Management E-Commerce Credit Card Processing

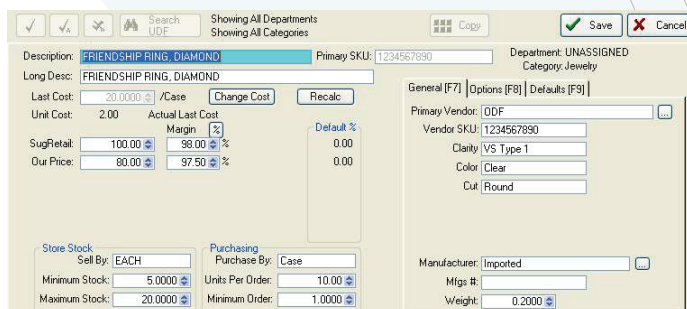
You have to run your store more efficiently, manage inventory effectively and still deliver the kind of service that keeps your customers coming back. POSitive Retail Manager gives you the tools to do it!



Inventory summary screen. See notes, pictures, stock counts, locations, pricing and promos at a glance.



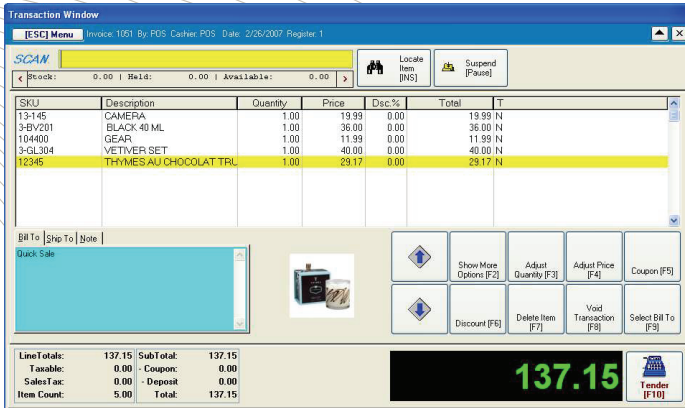
Items automatically placed on reorder list based on minimum stock quantities. Adjustment of quantities and selection of alternate vendors can be made at this time.



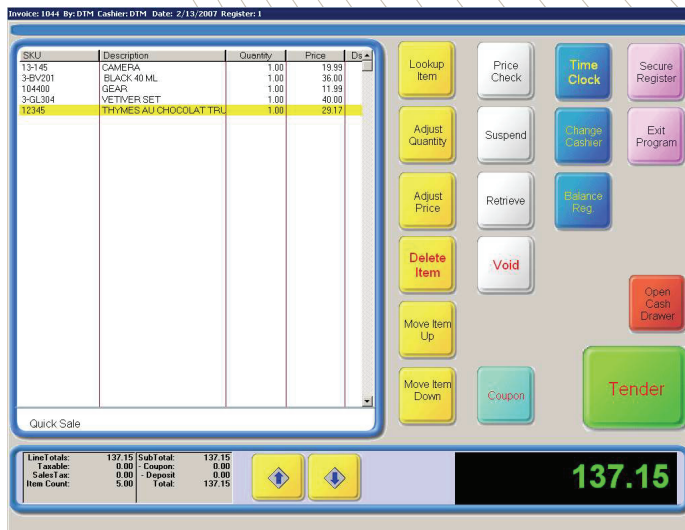
Inventory detail screen showing three, out of six possible, User Defined Fields. In our example we've used Clarity, Color and Cut.

Inventory Management Features

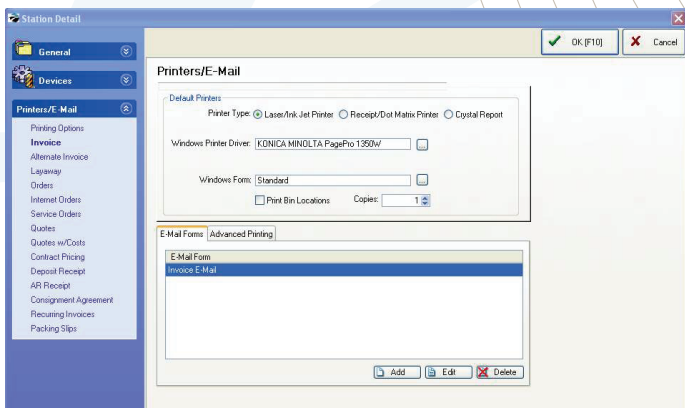
- Automatically track inventory as you sell and receive items
- Manage vendors
- Track layaways, sales orders, and special orders
- Display styles and colors in matrix (grid) format
- Generate purchase orders automatically at pre-set inventory levels
- Track serial numbers
- E-mail purchase orders
- Track item costs to four decimal places
- User defined fields for inventory items and customers
- See whether inventory is committed or available
- Track multiple units of measure for products ordered in bulk/cases
- Track inventory in multiple locations, such as "storage room" and "display case"



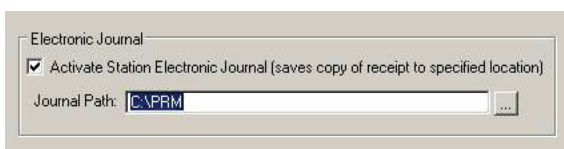
Standard register screen works with any computer. Quick input with keyboard or barcode scanner. See customer information and item pictures on same screen.



Fully customizable touchscreen can be saved and installed in multiple locations. Touchscreen interface can be set as default interface when an employee logs in.



Multiple print options, including printing to forms created with Crystal Reports. Different functions can be assigned to specific printers. Exclusive Advanced Printing can automatically trigger custom forms or labels based on item sold.



Electronic journal logs all transactions and the file can be stored in a location of your choosing.

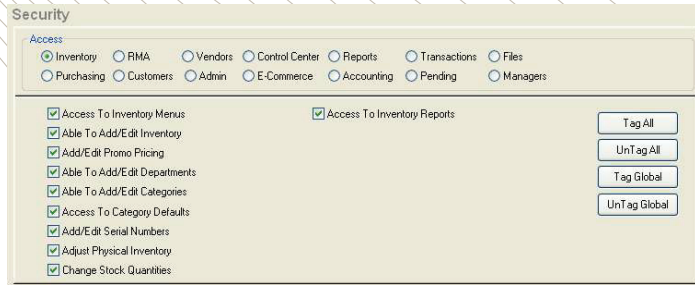
Ring Up Sales Quickly and Easily

- Your choice of register screens
- Fully customizable touchscreen
- POSitiveChoice allows you to type or scan product SKU's and customer numbers into the same input field
- Customer history may be viewed on Register screen
- Multiple tender types supported
- Create and track service work orders
- Issue, track and accept gift cards
- Price items the way you want, with flexible pricing options. Specific price level or discount can be automatically applied to customers
- Choose from multiple form and receipt options, including forms created with Crystal Reports
- Exclusive Advanced Printing feature can automatically print custom forms or labels, such as an ingredient label, based on item sold
- Select from multiple Ship To addresses
- Tax can be calculated based on delivery or Ship To address
- Interface with StarShip* for automatic processing of shipping with multiple carriers
- Commission tracking
- Electronic journal keeps log of all transactions
- E-mail PDF or HTML versions of invoice, order, quote and purchase order forms

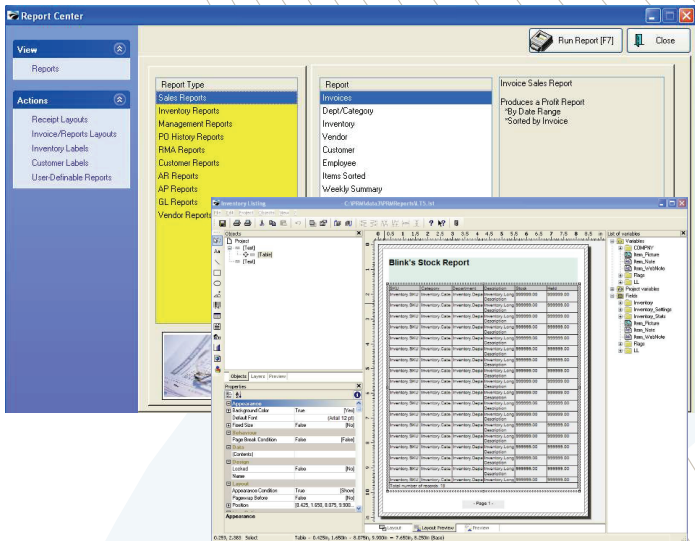
*StarShip is a third-party product made by V-Technologies LLC and must be purchased separately.



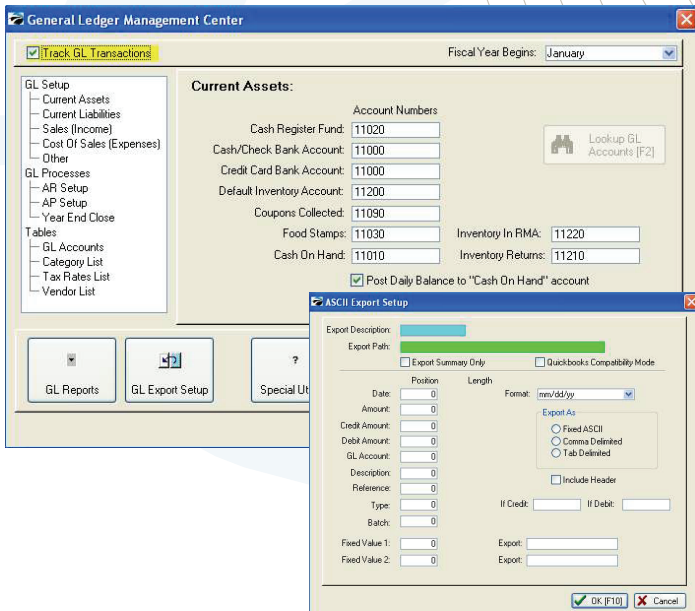
OmniBar provides fast, easy program navigation.



Extensive control to program access through individual and group security settings.



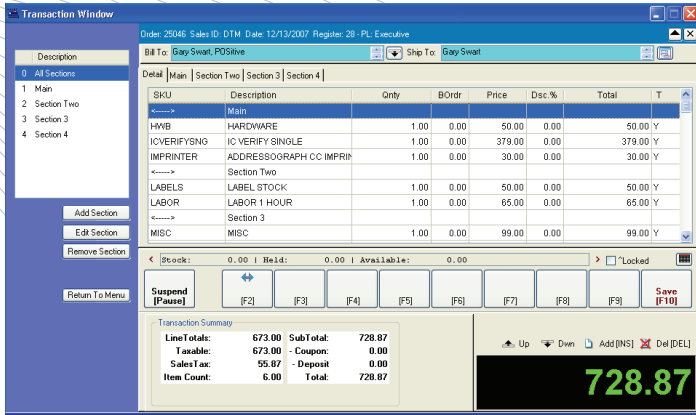
Numerous built-in reports, along with built-in custom report designer. Can also add reports created with Crystal Reports.



Built-in accounting with general ledger and check printing. Can export GL information to most accounting programs.

Other Features

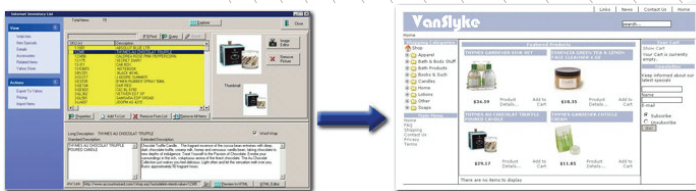
- Microsoft SQL database
- Control access to all parts of program through security settings applied by group or individual
- Employee time clock
- Numerous built-in reports and also works with Crystal Reports
- Custom form and barcode label designer built-in
- Accounting with general ledger and check printing
- Direct QuickBooks interface. GL export compatible with most accounting programs
- Built-in e-mail marketing capability
- Create and manage multiple customer loyalty programs
- Coupon & Gift Card management
- Extensive data import and export functions
- Comprehensive price management: Multiple price levels, automatic promo pricing, price breaks, mix n' match pricing, contract pricing, discounts by customer or group, discounts by category, price overrides and more
- Packages/Kits
- Quotes
- Contract pricing for specific jobs or projects
- Works with most brands of POS hardware
- Supports weight scales through use of serial to keyboard converter
- Handles "price in barcode" and "weight in barcode"



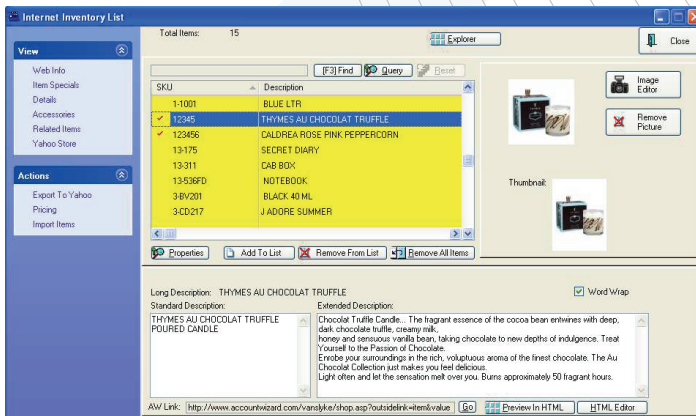
NEW! Section Manager is exclusive to PRM and allows you to break invoices, orders, quotes and service orders into easy to manage sections. Tabs above the work area allow you to show all items, or only items in a particular section. You may also change the order of sections.

Sections in quotes, orders and service orders may be broken out and invoiced separately, an ideal method for handling partial deliveries.

Multiple jobs can be tracked on a single service order.



One program makes it easy to manage both a retail and internet web store.



Product information, pictures and pricing is entered into POSitive Retail Manager and uploaded to your POSitiveCommerce e-commerce site with one click. Orders are also retrieved from the site with one click.



Your site looks the way you want it. Choose from dozens of ready-made templates, or have a designer custom design one for you.

E-Commerce Services

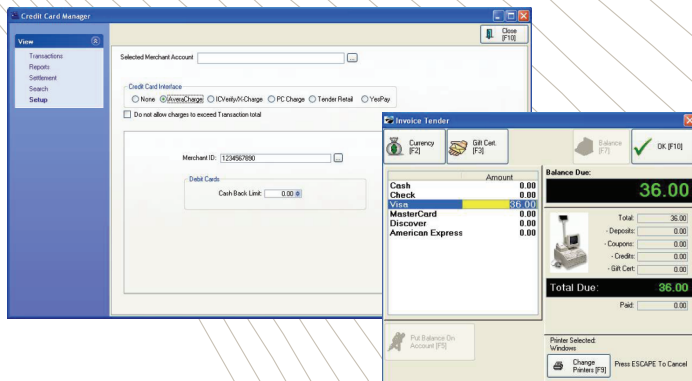
Open your store to the world, 24 hours a day, 7 days a week! POSitiveCommerce allows you to take your retail store inventory and create a web store in minutes. Simply tell POSitive which items in inventory you want posted to the web. Update your site anytime you want. Customize your web site to suit your store's style. POSitiveCommerce can work with existing web sites and web site hosting is also available.

POSitiveCommerce is based on Joomla and VirtueMart which are both open source products. Joomla is a Content Management System that provides the framework for our e-commerce solution. With a simple browser interface, users can easily update the content sections of their web site. Joomla is free and available to all under a General Public License, but its real strength comes from the thousands of developers who are actively creating third-party plug-ins for it, such as the VirtueMart shopping cart.

The Joomla/VirtueMart combination makes POSitiveCommerce state of the art, and by using open source technology we will be able to keep our features relevant and exciting for our customers. But, we do use proprietary modules in order to link with our POS products and in order to maintain control and compatibility, POSitiveCommerce must be hosted on our servers. Contact your dealer or POSitive Software for pricing.

AveraCharge

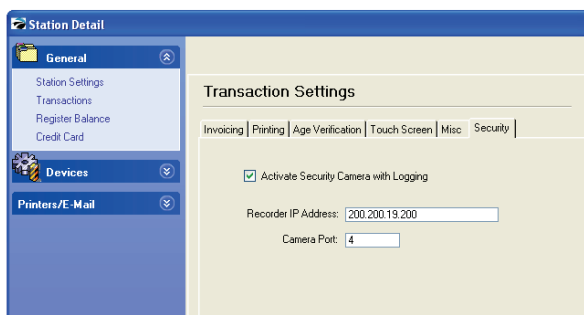
Credit Card Processing



AveraCharge credit card processing is built into POSitive Retail Manager.

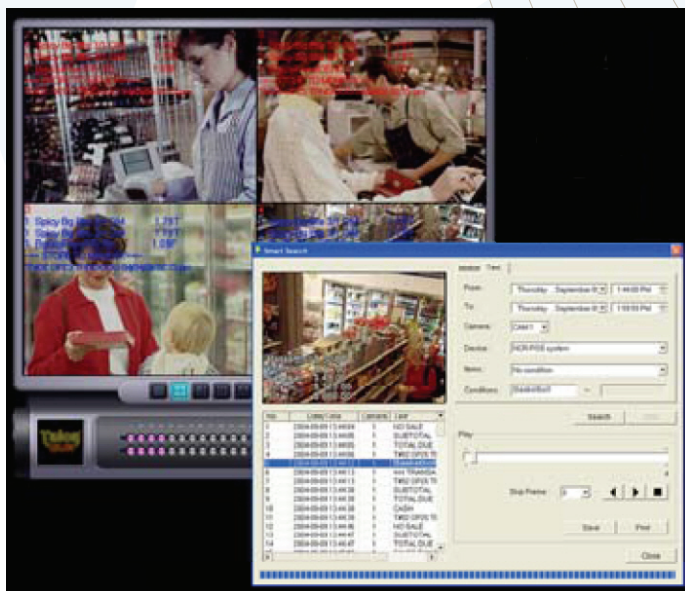
POSitive Retail Manager integrates with AveraCharge, giving you a fast, streamlined payment processing system. Setting up a merchant account is easy and there are no up-front fees. AveraCharge's internet based processing has faster transaction times and very competitive rates. If you would prefer to use another credit card processor, PRM is compatible with third-party software products, such as PCCharge and ICVerify.

Merchant Accounts signed through Paywire Incorporated, a registered service provider for the following FDIC insured bank: US Bank, Minneapolis MN



POSitive Retail Manager integrates with both the Talon and Eagle Eye Digital Video Surveillance (DVR) systems. The PRM transaction log is superimposed over the video so you have a complete record of the transaction.

Many POS systems can send simple text to video surveillance systems. What sets POSitive Guardian apart from other DVR solutions is the amount of sales information that is linked to the video record.



For example, it is possible to locate video footage based on time, date, register, clerk, invoice number, SKU, total, tender type or action performed. There is no guesswork.

A store owner can see exactly what was going on at the register for any given transaction. A store owner can also monitor POSitive Retail Manager and the DVR system from any computer with an internet connection.

POSitive Guardian is a standard feature of POSitive Retail Manager. Ask your dealer or POSitive Software for more information.



**Check-up on your store
from ANY computer
with a web browser!**

Imagine being able to see how your store is doing from any computer with internet access. With POSitive Retail Manager and POSitive Connect you can now do it!

Check out these features:

View

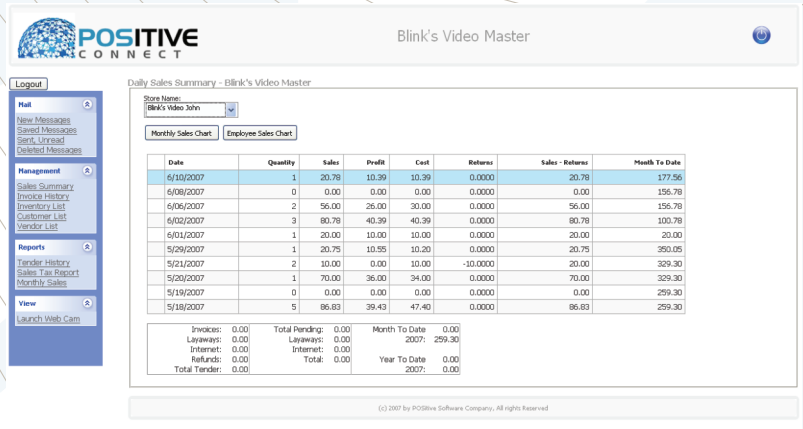
- Daily Sales Summary
- Monthly Sales Summary
- Invoice History
- Tender Report
- Inventory List
- Customer List
- Vendor List

E-Mail

Send mail to and receive mail from your employees.

Security

Monitor surveillance cameras
(Must have a Talon or Eagle Eye DVR system)



POSITIVE CONNECT Blink's Video Master

Logout

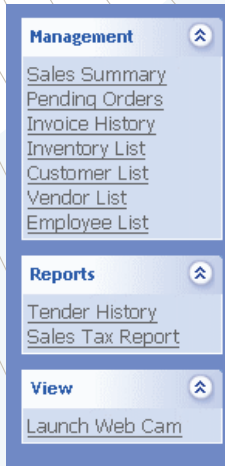
Store Name: Blink's Video 3076

Monthly Sales Chart | Employee Sales Chart

Date	Quantity	Sales	Profit	Cost	Returns	Sales - Returns	Month To Date
6/10/2007	1	20.78	10.39	10.39	0.0000	20.78	177.56
6/08/2007	0	0.00	0.00	0.00	0.0000	0.00	156.78
6/06/2007	2	56.00	26.00	30.00	0.0000	56.00	156.78
6/02/2007	3	80.78	40.39	40.39	0.0000	80.78	100.78
6/01/2007	1	20.00	10.00	10.00	0.0000	20.00	20.00
5/29/2007	1	20.78	10.39	10.39	0.0000	20.78	301.05
5/21/2007	2	10.00	0.00	10.00	-10.0000	20.00	329.30
5/20/2007	1	70.00	36.00	34.00	0.0000	70.00	329.30
5/19/2007	0	0.00	0.00	0.00	0.0000	0.00	259.30
5/18/2007	5	86.83	39.43	47.40	0.0000	86.83	259.30

Invoices: 0.00 Total Pending: 0.00 Month To Date: 0.00
 Layaways: 0.00 Internet: 0.00 Year To Date: 259.30
 Refunds: 0.00 Total: 0.00
 Total Tender: 0.00

© 2007 by POSitive Software Company. All Rights Reserved.



- Management**
 - Sales Summary
 - Pending Orders
 - Invoice History
 - Inventory List
 - Customer List
 - Vendor List
 - Employee List
- Reports**
 - Tender History
 - Sales Tax Report
- View**
 - Launch Web Cam

POSitive Connect is LIVE! When you log in, you'll see data current to that moment

POSitive Connect is unobtrusive and will not slow down your store system

POSitive Connect takes only a few minutes to install

POSitive Connect is a standard feature of POSitive Retail Manager



POSITIVE

Multi-Site

POSitive Multi-Site is an optional feature of POSitive Retail Manager that allows you to share data among multiple locations.



Date	Sales	Cost	Profit	Margin	Sales Tax	Month To Date
8/16/2007	21.51	25.00	16.57	40.00%	0.00	58.57
8/17/2007	18.00	12.00	12.00	66.67%	0.00	76.57
8/18/2007	85.00	60.00	25.00	29.41%	0.00	101.57
8/19/2007	80.00	25.00	11.00	13.75%	0.00	112.57
8/20/2007	0.00	0.00	0.00	0.00%	0.00	112.57
8/21/2007	0.00	0.00	0.00	0.00%	0.00	112.57
8/22/2007	0.00	0.00	0.00	0.00%	0.00	112.57
8/23/2007	0.00	0.00	0.00	0.00%	0.00	112.57
8/24/2007	0.00	0.00	0.00	0.00%	0.00	112.57
8/25/2007	0.00	0.00	0.00	0.00%	0.00	112.57
8/26/2007	0.00	0.00	0.00	0.00%	0.00	112.57
8/27/2007	0.00	0.00	0.00	0.00%	0.00	112.57
8/28/2007	0.00	0.00	0.00	0.00%	0.00	112.57
8/29/2007	0.00	0.00	0.00	0.00%	0.00	112.57
8/30/2007	0.00	0.00	0.00	0.00%	0.00	112.57
8/31/2007	0.00	0.00	0.00	0.00%	0.00	112.57
8/31/2007	180.00	50.00	65.00	36.11%	0.00	112.57

Daily Totals		Pending		Summary	
Inventory	30.00	POS Pending	0.00	POS YTD Sales	30.00
Accounts	0.00	Accounts	0.00	2007	
Orders	0.00	Orders	0.00	New To Date	
Service	0.00	Service	0.00	2007	
Interest	0.00	Interest	0.00		
Accounts/Reservable	0.00	Total	200.00		363.67
Refunds	0.00				
Total Totals	30.00	Daily	0.00		
Members On Account	0.00	Accounts	0.00		
Refunds On Account	0.00	Orders	0.00		
		Service	0.00		
		Interest	0.00		

What It Does

- ▶ Replicates data across multiple locations
- ▶ Allows control of data from a central location
- ▶ Allows sharing of customers, inventory, invoices, etc. across multiple locations
 - · Control of Inventory descriptions, SKUs, pricing, Departments and Categories from the Master Site
 - · Ability to print various Reports as related to each individual site from the Master Site location, including Tax Reports, Profit Reports, and Employee Time Sheets
 - · Ability to set different pricing for each site per item

How It Does It

- ▶ PRM was designed from the ground-up to be Multi-Site capable
- ▶ Each Site has a unique ID, called a SITE ID. This is generated automatically by POSitive.
- ▶ All Tables in the Database contain this SITE ID.
- ▶ Each site displays data filtered on the SITE ID.
 - Example: Inventory pricing is a separate table linked to the main Inventory table. Each site filters on the SITE ID, and only sees their own site pricing. The master site can look at the data without the filter, and see and set pricing for all sites.



POSITIVE
RETAIL MANAGER

Data is replicated between sites using MSSQL Replication. Replication is the duplication of data across multiple sites