

SIP DESKTOP ENDPOINTS



HDvoice

SoundPoint® IP650

2200-12651-001 with AC 2200-12651-025 PoE Only

6-Line IP Phone with Revolutionary Voice Quality

- Six lines (standalone) / 12 lines (with the SoundPoint IP Expansion Module)
- Polycom HD Voice technology, including support of G.722 wideband codec, Acoustic Clarity Technology 2, and systems design optimized for Polycom HD Voice technology
- Advanced functionality, including shared lines, busy lamp field, presence, and XHTML applications
- Support of up to three SoundPoint IP Expansion Modules • Intuitive user interface
- Backlit 320 x 160-pixel grayscale graphical LCD • USB port for future application
- Integrated IEEE 802.3af Power over Ethernet (PoE) support

2200-12750-025 Expansion Module for IP650

- 160 x 320 pixel graphical grayscale LCD with backlight
- 14 illuminated keys configurable as a line appearance or speed dial with BLF
- Hot swappable – up to 3 can be added/removed from a live IP 650
- Plug and play since power and signaling are provided by the host phone



HDvoice

SoundPoint® IP670

2200-12670-001 with AC 2200-12670-025 PoE Only

6-Line IP Phone with Color Display and HD Voice

- A large, vibrant color display for easier viewing and navigation • Revolutionary voice quality with Polycom HD Voice™ technology • Integrated Gigabit Ethernet (GigE) switch
- 6 lines in stand-alone mode and 34 lines with 3 Polycom SoundPoint IP Color Expansion Modules
- A visually improved platform to enable a high level of integration with productivity-enhancing applications and business processes • Intuitive user interface
- Advanced SIP functions, including shared lines, BLF, and presence
- USB port to support applications from the Polycom Productivity Suite

2200-12770-025 Expansion Module for IP670

- Matches elegantly with the look and feel of the IP 670
- Plug and play since power and signaling are provided by the host phone
- Hot swappable – up to 3 can be added/removed from a live IP 670
- 14 illuminated keys configurable as a line appearance or speed dial with BLF



SoundPoint IP PHONE ACCESSORIES

Deskstand/Wall Mount

2200-17542-001 Desk Stand for use with SoundPoint IP 450. 5-Pack. Replacement Product.

2200-17543-001 Combined Deskstand and Wallmount for use with SPIP 320, SPIP 330, SPIP 321, SPIP 331 and SPIP 335. 5-Pack

PoE Cables

2200-11014-601 Power Over Ethernet Cable for Cisco PoE. RoHS Compliant for use with SoundPoint IP 300 & 301 and IP 500 & 501 phones

2200-11026-001 Power/Data Cable 5-Pack. For use with Sound Point IP 500 & 501phones. Approved for multiple regions.

Wall Mounts

2200-11611-001 SoundPoint IP Wallmount Bracket kit. For use with SoundPoint IP 500 & 501 and IP 600 & 601 phones

2200-11611-002 SoundPoint IP Wallmount Bracket kit. For use with SoundPoint IP450 phone

2200-12611-001 SoundPoint IP Wallmount Bracket kit. For use with SoundPoint IP 550, 560, 650 and 670 phones

2200-17586-001 SoundPoint IP Wallmount Bracket kit for use with SoundPoint IP 450. 5-pack

2200-17587-001 SoundPoint IP Wallmount Bracket kit. For use with SoundPoint IP 550, 560, 650 and 670 phones. 5-pack

Handsets

2200-17444-001 5-pack HD-Voice handset+cord for IP335, IP 450, IP 550, IP 560, IP 650 and IP 670

2200-17445-001 5-pack Handset + handset cord for SoundPoint IP 300, 301, 500, 501, 600, and 601

Universal Power Supplies

2200-12335-001 Universal Power Supply for SPIP 320, SPIP 330, SPIP 430, SPIP 550, SPIP 601& SPIP 650. 1-pack, 24V, 0.5A, NA power plug

2200-17568-001 Universal Power Supply for SP IP 301 & SP IP 501. 5-pack, 12V, 1A, NA power plug

2200-17569-001 Universal Power Supply for SPIP 320, SPIP 330, SPIP 430, SPIP 550, SPIP 601& SPIP 650. 5-pack, 24V, 0.5A, NA power plug

2200-17670-001 Universal Power Supply for SPIP 560, SPIP 670 and VVX 1500. 5-pack, 48V, 0.4A, NA power plug

2200-17671-001 Universal Power Supply for SoundPoint IP 560 and 670, and VVX 1500 Product Family. 1-pack, 48V, 0.4A, NA power plug

2200-17877-001 Universal Power Supply for SPIP 321, SPIP 331, SPIP 335, SPIP 450. 5-pack, 24V, 0.5A, NA power plug

2200-17878-001 Universal Power Supply for SPIP 321, SPIP 331, SPIP 335, SPIP 450. 1-pack, 24V, 0.5A, NA power plug

2200-17879-001 Universal Power Supply for SPIP 650. 1-pack, 24V, 0.5A, NA power plug

Interface Module

2200-11095-002 Headset interface adapters, 5 pack of 2.5mm to RJ-9. Compatible with SoundPoint IP 330/331 and 320/321 phones

LET TARGET HELP YOU BECOME POLYCOM CERTIFIED

TOLL FREE – 800-873-5528 • LOCAL – 301-296-9400 • FAX – 301-296-9494

SoundStation SIP CONFERENCE ENDPOINTS

SoundStation® IP 5000 2200-30900-025 PoE Only

SIP Conference Phone

- Polycom HD Voice technology • Patented Polycom Acoustic Clarity™ technology
- 7-foot microphone pickup and a small footprint designed for executive offices and smaller rooms with up to 6 participants • Compatible with a broad array of SIP call platforms
- High-resolution display
- Integrated Power over Ethernet (PoE) for easy installation. Optional AC Power Kit
- Resists interference from mobile phones and other wireless devices
- The most feature-rich family of IP conference phones available

Accessories:

2200-43240-001 AC Power Kit for SoundStation IP5000. Includes 100-240VAC, 0.4A, 48VDC/19W power supply, 1.8m/6ft power cord with NA plug and a Power Insertion Cable (PIC).

HDvoice



SoundStation® IP 6000

2200-15660-001 Expandable AC/PoE **2200-15600-001 Expandable PoE Only**

SIP Conference Phone

- Polycom HD Voice technology • Patented Polycom Acoustic Clarity™ technology
- 12-foot (4-meter) microphone pickup – ideal for small to midsize conference rooms.
- Add even greater range with optional expansion mics • Strong, robust SIP software
- Robust VoIP interoperability – Compatible with a broad array of SIP call platforms to maximize voice quality and feature availability
- Resists interference from mobile phones and other wireless devices • High-resolution display

Accessories:

2215-07155-001 Expansion (EX) microphone kit for SoundStation IP6000. Includes two EX mics and two 7ft/2.3m cables
2200-00699-001 Wireless Lapel Microphone with Frequency A = 171.905MHz for SoundStation IP 6000 and SoundStation IP 7000
2200-42740-001 AC Power Kit for SoundStation IP 6000. Includes 100-240V, 0.4A, 48VDC power supply, 6ft/1.8m power cord with NA plug and Power-over-Ethernet Insertion Cable (PIC)

HDvoice



SoundStation® IP 7000

2200-40000-001 Expandable PoE Only

2230-40300-001 Expandable AC/PoE

SIP Conference Phone

- Polycom HD Voice technology • Large high-resolution display with XHTML microbrowser
- Robust VoIP interoperability • Patented Polycom Acoustic Clarity™ technology
- Applications Port connects to mobile phones for dialing from rooms without an analog phone line, and connects to a PC
- 12-foot (4-meter) microphone pickup – ideal for small to midsize conference rooms.
- Add even greater range with optional expansion microphones • Strong, robust SIP software
- Resists interference from mobile phones and other wireless devices

Accessories:

2230-40500-001 SoundStation IP 7000 multi-unit connectivity kit. For large room coverage. Includes two consoles, multi-interface module with universal power supply, 6ft/1.8m power cord with NA plug and 25ft/7.6m console interconnect cable
2230-40600-025 SoundStation IP 7000 (SIP) conference phone. 802.3af PoE model. Expandable. Including 25ft/7.6m CAT5 shielded Ethernet cable and 3m/10ft CLink2 cable (for integration with compatible RealPresence Group Series and HDX Series)
2200-40040-001 Expansion Microphone Kit for SoundStation IP 7000. Includes two (2) expansion mics and 2.1m/7ft connection cables
2200-00699-001 Wireless Lapel Microphone with Frequency A = 171.905MHz for SoundStation IP 6000 and SoundStation IP 7000
2200-07817-001 Cable - 2.5mm cell phone cable 1.2m/4ft for use with SoundStation IP 7000
2200-17240-002 Computer Calling Kit-use SoundStation IP 7000 as speakerphone for VoIP calls via computer based softclients. 1.5m/5ft cable connects phone to a computer's 3.5mm mic/line in and line out jacks
2200-19300-001 Multi-Interface Module to daisy chain two SoundStation IP 7000, add single HDX digital mic or add Auxiliary audio I/O ports. Includes 100-240V,0.63A,48V/30W power supply, 6ft/1.8m power cord with NA plug and a 12ft/3.6m 10-pin network cable
2200-40017-001 Cable - Two (2) expansion microphone cables, 7ft/2.1m for SoundStation IP 7000
2200-40017-003 Cable - Two (2) expansion microphone cables, 25ft/7.6m for SoundStation IP 7000
2200-40110-001 AC Power Kit for SoundStation IP 7000. Includes 100-240V, 1.5A, 48V/50W power supply, 6ft/1.8m power cord with NA plug and Power Insertion Cable
2200-40115-001 Cable - Console Interconnect Cable for SoundStation IP 7000, 25ft/7.6m CLink 2 cable with Walta to Walta connectors. Connects two (2) SoundStation IP 7000 consoles together
2200-40115-002 Cable - HDX microphone array cable, Walta to Walta connectors, 10ft/3m. Connects a HDX microphone to a HDX microphone/SoundStation IP 7000
2200-40125-001 Cable Attachment Kit to firmly attach Clink cables to SoundStation IP 7000 units. Contains 2 cable clamps with Philips screws and mounting instructions
2215-17409-001 Cable - External Speaker Integration Kit for SoundStation IP 7000. Includes 15cm/6in RCA to RCA Y-cable, 3.5mm stereo to RCA Y-adaptor and 3.5mm stereo-to-stereo audio couple
2457-19047-001 Cable - 3.5mm mobile device cable 1.2m/4ft for use with SSIP 7000. For devices with iPhone (R) style wiring and wiring used by many Samsung, Sony Mobile Communications and Nokia mobile devices
2457-19304-001 Replacement cable for connecting SoundStation IP 7000 to the Multi-Interface Module. 12ft/3.6m 10-pin network cable

HDvoice



SoundStation DUO CONFERENCE ENDPOINT



SoundStation Duo™ Dual Mode Analog and IP Conference Phone
2200-19000-0001 AC

- Best-in-class investment protection – Operates in analog telephony environments and supports the migration to VoIP
- Broadest VoIP interoperability – Compatible with a broad array of SIP call platforms to maximize voice quality and feature availability while simplifying management and administration
- Polycom HD Voice technology
- Strong, robust SIP software – Leveraging the most advanced SIP endpoint software in the industry, with advanced call handling, security, and provisioning features
- Lower cost of deployment and administration – Web configuration tool makes setup simple and eliminates the need for a boot server
- Applications Port – Connects to mobile phones for dialing from rooms without an analog phone line, and connects to a PC or tablet to become a high-quality conference phone for Internet calling
- Resists interference from mobile phones and other wireless devices while delivering clear voice conferencing with no distractions
- Up to 10-foot (3-meter) microphone pickup range. Optional expansion microphones for even larger room coverage



HDvoice

Accessories:

- 2200-07817-001** Cable - 2.5mm cell phone cable 1.2m/4ft for use with SoundStation Duo
- 2200-15855-001** Expansion Microphone Kit for SoundStation Duo. Includes two expansion mics and 2.1m (7ft) cables
- 2200-17240-002** Computer Calling Kit-use SoundStation Duo as speakerphone for VoIP calls via computer based softclients. 1.5m/5ft cable connects phone to a computer's 3.5mm mic/line in and line out jacks
- 2200-19050-001** AC Power Kit for SoundStation Duo. Includes Power Supply, Power Cord with North American plug, Power Injection Module (PIM) with 21ft/6.4m combined PSTN/Cat5 cable, 7ft/2.1m RJ-11 PSTN cable and 7ft/2.1m Cat5 cable
- 2200-41220-001** Cable - Two (2) expansion microphone cables, 2.1m/7ft for SoundStation VTX 1000, SoundStation2 EX, SoundStation2W (Expandable), SoundStation Duo and SoundStation IP 6000
- 2200-41220-002** Cable - Two (2) expansion microphone cables, 4.6m/15ft for SoundStation VTX 1000, SoundStation2 EX, SoundStation2W (Expandable), SoundStation Duo and SoundStation IP 6000
- 2457-19047-001** Cable - 3.5mm mobile device cable 1.2m/4ft for use with SoundStation Duo. For devices with iPhone (R) style wiring and wiring used by many Samsung, Sony Mobile Communications and Nokia mobile devices

CX PHONES FOR MICROSOFT UNIFIED COMMUNICATIONS

CX100

Speakerphone
For Microsoft Office
Communicator 2007
2200-44240-001



- Polycom high definition voice technology for high-fidelity sound
- Two high-quality microphones
- Tightly integrated with Microsoft Office Communicator
- Built-in stereo headphone port
- Connects and powers through USB
- The integrated USB cable stores inside the unit



CX300

Desktop Speakerphone
For Microsoft Office
Communicator 2007
2200-32500-025

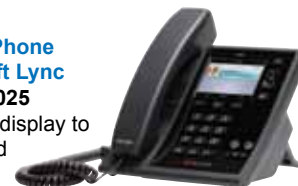


- Telephone peripheral for Microsoft Office Communicator 2007
- Full duplex speaker phone
- High definition audio for best possible voice and video calls
- Convenient dial pad and display
- USB, driverless plug-and-play install
- Integration with Microsoft Windows® XP and Microsoft Windows Vista™
- Enhanced Presence Indicator



CX500

Desktop IP Phone
For Microsoft Lync
2200-44300-025



- Large color display to view call and directory information
- Monitor Only Speaker
- Polycom HD Voice™ technology in the handset for stunning voice quality and clarity
- Single integrated Power Over Ethernet (PoE) port for simple installation (AC adapter optional)
- Ships with Lync 2010 Phone Edition and requires Lync Server 2010



CX600

Desktop IP Speakerphone
For Microsoft Lync
2200-15987-025



- Polycom HD Voice technology
- DTMF tone generation/DTMF event RTP payload
- Low-delay audio packet transmission
- Adaptive jitter buffers • Packet loss concealment
- Background noise suppression • Cellular Phone Immunity
- Full Duplex Speakerphone
- Dedicated RJ9 Headset Port
- CODECs supported: RTAudio, G.722.1, G.711 a/u law
- 2 10/100/1000 PoE Ports
- Optional AC Adapter sold separately
- Optional Wall Mount bracket sold separately



CX700 Desktop
IP Speakerphone
For Microsoft Office
Communicator 2007
2200-31400-001 (R1)
PoE and AC Power
2200-31410-001(R2)
PoE and AC Power
2200-31410-025 (R2)
PoE Only



- Fully embedded Microsoft Office Communicator 2007 client, the Poly•
- Bright, touch-screen color display
- Power Over Ethernet (PoE) capable
- Optional AC Adapter sold separately
- Two-port Gigabit Ethernet switch for PC pass-through
- Biometric fingerprint reader or on-screen keyboard to personalize the Polycom CX700 speakerphone with individual preferences

IF POLYCOM MAKES IT WE CAN GET IT FOR YOU

TOLL FREE – 800-873-5528 • LOCAL – 301-296-9400 • FAX – 301-296-9494

SIP-DECT MOBILITY

Small System – Pre-Licensed for Installations up to 20 RFPs

RFP L35 IP P/N T0000-68622018

Large System – 3 or More RFP Networks Need a Free License Key to Operate

RFP 35 IP P/N T0000-68637016

- All 60 DECT channels supported for maximum use of the DECT capacity
- 8 simultaneous voice channels per RFP, 4 additional channels for switching purposes
- DSAA authentication between base and handset • Support of DECT encryption
- Integrated DECT dipole antenna • 3 LEDs signalling the current operating state
- RFP (L)35 IP can be connected via RJ 45 connector • Connection via Ethernet 100/1000 BaseT
- Quality of service supported by Diff-serv / ToS Flag • Adaptive jitter compensation
- Echo cancellation / suppression • Voice activity detection and comfort noise generator

INDOOR



RFP L35 IP & RFP 35 IP

Small System – Pre-Licensed for Installations up to 20 RFPs

RFP L36 IP P/N 68621010

Large System – 3 or More RFP Networks Need a Free License Key to Operate

RFP 36 IP P/N 68635010

- All 60 DECT channels supported for maximum use of the DECT capacity
- 8 simultaneous voice channels per RFP, 4 additional channels for switching purposes
- DSAA authentication between base and handset • Support of DECT encryption
- Integrated DECT dipole antenna • 3 LEDs signalling the current operating state
- RFP (L)36 IP can be connected via RJ 45 connector • Connection via Ethernet 100/1000 BaseT
- Quality of service supported by Diff-serv / ToS Flag • Adaptive jitter compensation
- Echo cancellation / suppression • Voice activity detection and comfort noise generator

OUTDOOR

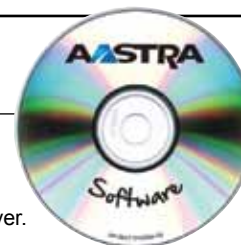


RFP L36 IP & RFP 36 IP

OpenMobility Manager Software Activation Kit 89-00002AAA-A

includes: Portable Access Rights key (PARK key), CD with OMM Software, Configuration Tool, OMM Installation, Administration and Maintenance document and documentation.

Aastra's SIP-DECT solution can be easily deployed in most open-standard IP environments including; Hosted or Premised based using a SIP based IP-PBX, Hybrid PBX or Open Source PBX. The solution requires limited engineering planning and is managed by OpenMobility Manager™ (OMM) software and provisioned on the SIP based infrastructure as simple SIP Extensions. The OMM can be installed on the DECT access points, a PBX or a Linux server.



SIP DECT HANDSETS



612d SIP DECT Handset

- Color TFT display
- Telephone book for 200 contacts (if supported by PABX)
- Ambient noise filter for loud areas
- Hands free operation
- Up to 5 user profiles can be configured
- 44 polyphonic ringtones
- Headset connector (2.5 mm jack)
- Intelligent battery management
- 2 programmable navigation keys
- 3 color multi-purpose LED



622d SIP DECT Handset

- Color TFT display
- Telephone book for 200 contacts (if supported by PABX)
- Ambient noise filter for loud areas
- Hands free operation
- Headset connector & Bluetooth® support
- Intelligent battery management
- 2 programmable navigation keys
- 3 color multi-purpose LED
- Mini USB PC interface



632d SIP DECT Handset

- Color TFT display
- Telephone book for 200 contacts (if supported by PABX)
- Ambient noise filter for loud areas
- Hands free operation
- Headset connector & Bluetooth® support
- 1 programmable Hotkey
- 3 programmable side keys
- 1 Emergency key on top
- 2 programmable navigation keys
- Mini USB PC interface

SIP-DECT LITE

Aastra SIP-DECT™ Lite solution provides a bundled offering of pre-licensed single cell RFP SL35 IP (Radio Fixed Part and either an Aastra 612d or 622d DECT phone handset. SIP-DECT Lite provides a value priced entry point for providing a mobility option for the small office or user group, with the ability to support multiple DECT phones and up to 8 concurrent calls.

The same radio base and handsets can be upgraded to form part of a complete Aastra SIP-DECT Enterprise or Enterprise Plus solution as the business needs grow and evolve. With new simplified configuration and deployment software specifically for the single RF solution, SIP-DECT Lite provides a high quality, reliable wireless option for all users and is not tied to a specific desk phone model. SIP-DECT Lite is based on the new Aastra RFP SL35 IP with expanded memory footprint to store firmware (no TFTP/FTP server requirement), Gigabit Ethernet (PoE or included AC adapter) and a choice of 600d series handsets.

The SIP-DECT Lite solution can be configured via the DECT handsets as well as with a web-based configuration software – the OMM web service. Furthermore, carriers can configure the SIP-DECT Lite solution via configuration files.

Highlights of SIP-DECT Lite

- Outstanding voice quality due to a reserved frequency spectrum and automatic selection from 60 dedicated radio channels
- DECT XQ avoids the degradation or cancellation of the radio signal in reflecting environments
- The solution can be expanded according to your needs
- Handset messages with up to 1,000 characters & different priorities
- Transfer of private directory entries as vCards (internally)

**NO
CERTIFICATION
REQUIRED!**



SIP-DECT Lite (612d)

Part Number: 88-00003AUS-A

- Large color LCD display
- Up to 200 phone book entries
- Up to 5 user profiles can be configured
- 5 programmable keys
- Handsfree operation
- 44 polyphonic ringtones
- Ambient noise filter for loud environments
- Headset connector (2.5 mm jack)
- Long battery life
- Also includes a pre-licensed single cell RFP SL35 IP



SIP-DECT Lite (622d)

Part Number: 88-00004AUS-A

- Large color LC display
- Up to 200 phone book entries
- 7 programmable keys
- Intuitive menu navigation and ergonomic operation
- Handsfree operation
- 44 polyphonic ringtones
- Ambient noise filter for loud environments
- Long battery life
- USB and Bluetooth® interfaces
- Vibra call • Mini USB PC interface
- Also includes a pre-licensed single cell RFP SL35 IP



NEW SIP ENDPOINTS

6863i

- Up to 2 lines on dedicated line keys with LED
- 3 Programmable keys that come preprogrammed and labelled with default values
- 4-way navigation with Select/OK key
- Dedicated function keys including: Transfer, Callers List, Hold, Redial, Goodbye, Options, 2 volume keys, Mute (with LED) and Speaker (with LED) • Power-over-Ethernet
- Aastra Hi-Q™ Audio Technology
- Full-duplex quality speakerphone
- Wideband handset and speakerphone
- Monochrome LCD- 2.75" 128x48 pixel display
- Dual 10/100 Mbps Ethernet ports with hardware based Ethernet switch



6865i

- Up to 9 lines with 2 dedicated line keys with LED
- 8 Programmable keys with LEDs
- 4-way navigation key with Select/OK button
- Dedicated function keys including: Conference, Transfer, Callers List, Hold, Redial, Goodbye, Options, 2 volume keys, Mute (with LED) and Speaker/Headset (with LED)
- Aastra Hi-Q™ Audio Technology
- Full-duplex quality speakerphone
- Wideband handset and speakerphone
- 3.4" 128x48 pixel soft white backlit display
- Dual 10/100 Mbps Ethernet ports with hardware based Ethernet switch • Power-over-Ethernet
- Supports up to 3 expansion modules



6867i Gigabit with Color Display

- Up to 9 lines with 2 dedicated line keys with LED
- 6 Programmable soft keys with LEDs
- 4 Context Dependent soft keys
- 4-way navigation key with Select/OK button
- 3.5" QVGA 320x240 pixel color display
- Dedicated function keys including: Conference, Transfer, Directory, Callers List, Hold, Redial, Goodbye, Info Key, Options, 2 volume keys, Mute (with LED) and Speaker/Headset (with LED)
- Built in USB 2.0 port • Aastra Hi-Q™ Audio Technology
- Full-duplex quality speakerphone with dual mics
- Supports up to 3 expansion modules • PoE Class 2
- Dual 10/100/1000 Mbps Ethernet ports (LAN/PC)

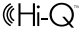


MITEL-AASTRA HAS YOUR MOBILITY SOLUTION

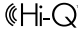
TOLL FREE – 800-873-5528 • LOCAL – 301-296-9400 • FAX – 301-296-9494

SIP ENDPOINTS

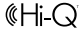


- 6735i** 
- Dual Gigabit 10/100/1000 Ethernet ports
 - XML Browser
 - Full-duplex speakerphone
 - Enhanced Call Management
 - Power Over Ethernet (PoE) support
 - Large LCD Display; LED indicator for call and Message Waiting
 - Shared call appearances
 - Support for up to 9 simultaneous calls
 - Scalable up to 108 keys
 - Wall mountable

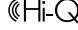


- 6737i** 
- Dual Gigabit 10/100/1000 Ethernet ports
 - XML Browser
 - Full-duplex speakerphone
 - Enhanced Call Management
 - Power Over Ethernet (PoE) support
 - Larger LCD Display; LED indicator for call and Message Waiting
 - Shared call appearances
 - Support for up to 9 simultaneous calls
 - Scalable up to 108 keys
 - Wall mountable

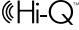


- 6730i** 
- Up to 6 lines with call appearances and LEDs
 - 2 dedicated keys
 - Full duplex speakerphone
 - 3-line LCD display
 - Single 10/100 port
 - 10 dedicated hard keys for common phone functions
 - XML browser
 - Hi-Q Audio™
 - Includes required AC adaptor

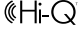


- 6731i PoE** 
- Power over Ethernet
 - Full duplex speakerphone
 - Up to 6 lines with call appearances and LEDs
 - Dual 10/100 switched Ethernet ports
 - 2 dedicated keys • 3-line LCD display
 - 10 dedicated hard keys for common phone functions
 - XML browser
 - Hi-Q Audio™
 - AC adaptor NOT included (D0023-1051-00-75)

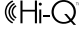


- 6731i AC** 
- Power over Ethernet
 - Full duplex speakerphone
 - Up to 6 lines with call appearances and LEDs
 - Dual 10/100 switched Ethernet ports
 - 2 dedicated keys • 3-line LCD display
 - 10 dedicated hard keys for common phone functions
 - XML browser
 - Hi-Q Audio™
 - AC adaptor included (D0023-1051-00-75)

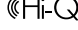


- 6739i with Color LCD** 
- Bluetooth
 - 5.7" Full VGA Color Touch Screen • Built-in USB port
 - Integrated Gigabit Ethernet and Bluetooth support • Intuitive GUI
 - On screen keyboard • XML support
 - Up to 9 lines with call appearances
 - Distinctive ringing, priority alerting
 - Multi-proxy support • BLF support
 - Up to 55 programmable softkeys
 - Built-in Local 3-way Conference
 - Call forward, Call transfer & Call waiting
 - Intercom and Paging with auto answer and much MORE!

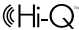


- 6753i** 
- XML Browser
 - Full-duplex speakerphone
 - Enhanced Call Management
 - Wall mount
 - Power Over Ethernet (PoE) support
 - Built-in dual 10/100 Ethernet ports
 - 3-Line LCD Display; LED indicator for call and Message Waiting
 - Shared call appearances
 - Support for up to 9 simultaneous calls
 - Scalable up to 108 keys

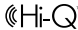


- 6755i** 
- XML Browser
 - Full-duplex speakerphone
 - Enhanced Call Management
 - Power Over Ethernet (PoE) support
 - Built-in dual 10/100 Ethernet ports
 - Large LCD Display; LED indicator for call and Message Waiting
 - Shared call appearances
 - Support for up to 9 simultaneous calls
 - Scalable up to 108 keys
 - Wall mountable

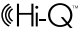


- 6757i** 
- XML Browser
 - Huge LCD display
 - Full-duplex speakerphone
 - Wall mountable
 - Enhanced Call Management
 - Power Over Ethernet (PoE) support
 - Built-in dual 10/100 Ethernet ports
 - LED indicator for call and Message Waiting
 - Shared call appearances
 - Support for up to 9 simultaneous calls
 - Scalable up to 108 keys

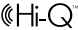


- 6725ip Lync** 
- Optimized for Microsoft Lync
 - 3.5" QVGA Color Screen
 - 2-way navigation and Select key
 - 2 LCD softkeys and menu key
 - Wideband audio handset
 - Wideband audio speakerphone
 - Wideband audio headset support
 - USB ports • UC Presence indicator
 - Message Waiting indicator
 - PoE or AC powered (AC adaptor optional)



- 9143i** 
- 3 line adjustable backlit display
 - Full-duplex speakerphone
 - Up to 9 lines with call appearances
 - 3 call appearance lines with LEDs
 - 4 navigational keys
 - 7 programmable keys
 - 10 predefined hard keys
 - Conference
 - Call Forward/Call Transfer/Call Waiting
 - Redial • Personal Directory
 - LED for call and MWI
 - Dual 10/100 Mbps switched Ethernet ports (LAN and PC ports)



- 9480i** 
- 8 line adjustable backlit display screen
 - 6 4 call appearance lines with LEDs
 - 4 navigational keys
 - 6 customizable softkeys; programmable up to 20 functions
 - 8 predefined hard keys • Conference
 - LED for call and MWI
 - Call Forward/Call Transfer/Call Waiting
 - Redial • Callers Log
 - Live dial pad or pre-dial support
 - Dual 10/100 Mbps switched Ethernet ports (LAN and PC ports)
 - Power Over Ethernet (PoE) support



- SIP-T22P Professional Telephone - PoE**
SIP-T22 Professional Telephone - AC
- TI TITAN chipset and T1 voice engine
 - 132 x 64 graphic LCD
 - 3 VoIP accounts, Broadsoft /Avaya/Asterisk validated
 - HD Voice: HD Codec, HD Handset, HD Speaker
 - 32 keys including 4 soft keys
 - SMS, Voicemail, Intercom • Localized language
 - XML phonebook • FTP/TFTP/HTTP, PnP Auto-provision
 - Headset ready – modular jack • Wall-mountable



- SIP-T26P Professional Telephone - PoE**
- TI TITAN chipset and T1 voice engine
 - 132 x 64 graphic LCD • Expansion module ready
 - 3 VoIP accounts, Broadsoft /Avaya/Asterisk validated
 - HD Voice: HD Codec, HD Handset, HD Speaker
 - 45 keys including 13 programmable keys
 - BLF/BLA, SMS, Voicemail, Intercom
 - Localized language, XML phonebook
 - FTP/TFTP/HTTP, PnP Auto-provision
 - SRTP/HTTPS/TLS, VLAN, QoS • 2xRJ45
 - Headset ready – modular jack • Wall-mountable



- SIP-T28P Executive Telephone - PoE**
- TI TITAN chipset and T1 voice engine
 - 320x160 graphic LCD with 4-level grayscales
 - 6 VoIP accounts, Broadsoft /Avaya/Asterisk validated
 - HD Voice: HD Codec, HD Handset, HD Speaker
 - 48 keys including 16 programmable keys
 - BLF/BLA, SMS, Voicemail, Intercom
 - Localized language, XML phonebook
 - FTP/TFTP/HTTP, PnP Auto-provision
 - SRTP/HTTPS/TLS, VLAN, QoS • 2xRJ45
 - Expansion module ready
 - Headset ready – modular jack • Wall-mountable



- SIP-T32G Gigabit Color Telephone - PoE**
- TI Aries chipset and T1 voice engine
 - Dual-port Gigabit Ethernet • Supports IPV6
 - 3" TFT-LCD, 400 x 240 pixel, 262K colors
 - Color Picture Caller-ID, Screensaver, Wallpaper
 - Support HD wideband codec: G.722
 - HD Voice: HD Codec, HD speaker, HD handset
 - Full-duplex speakerphone with AEC • 3 VoIP accounts
 - Auto-provision via TFTP / FTP / HTTP /HTTPS / PNP
 - SRTP / HTTPS / TLS, VLAN, QoS, Open VPN
 - National Language Support • Headset ready – modular jack • BLF/BLA, Hot-desking, OpenVPN



- SIP-T38G Large Screen Gigabit Color Telephone - PoE**
- TI Aries chipset and T1 voice engine • Supports IPV6
 - Dual-port Gigabit Ethernet (Router & Switch)
 - 4.3" TFT-LCD, 480 x 272 pixel, 16.7M colors
 - Color Picture Caller-ID, Screensaver, Wallpaper
 - HD Voice: HD Codec, HD speaker, HD handset
 - Full-duplex speakerphone with AEC
 - Headset ready • LCD Expansion module ready
 - EXP38 Expansion Module 38 Keys**
 - Dual color LEDs • Daisy-chain 6 modules
 - EXP39 LCD Expansion Module 20 Keys**
 - Daisy-chain 6 modules • 160 x 320 graphic LCD



- SIP-T41P 10/100 Telephone - PoE**
- Revolutionarily new design
 - Yealink Optima HD voice
 - 2.7" 192x64-pixel graphical LCD with backlight
 - Up to 3 SIP accounts
 - Paper label free design
 - PoE support
 - Headset, EHS support
 - Integrated stand with 2 adjustable angles
 - Wall mountable
 - Simple, flexible and secure provisioning options



- SIP-T42G Gigabit Telephone - PoE**
- Revolutionarily new design
 - Yealink Optima HD voice
 - Dual-port Gigabit Ethernet
 - 2.7" 192x64-pixel graphical LCD with backlight
 - Up to 3 SIP accounts
 - Paper label free design
 - PoE support • Headset, EHS support
 - Integrated stand with 2 adjustable angles
 - Wall mountable
 - Simple, flexible and secure provisioning options



- SIP-T46G Color Gigabit Telephone - PoE**
- Revolutionarily new design
 - Yealink Optima HD voice
 - Dual-port Gigabit Ethernet
 - 4.3" 480 x 272-pixel color display with backlight
 - Built-in USB port, supports Bluetooth headset (Through USB Dongle) • Up to 6 SIP accounts
 - Paper label free design • PoE support
 - Headset, EHS support
 - Supports expansion modules
 - Stand with 2 adjustable angles • Wall mountable



- SIP-T48G 7" Color Touch Screen Display Gigabit Telephone - PoE**
- Revolutionarily new design • Yealink Optima HD voice
 - Dual-port Gigabit Ethernet • PoE support
 - 7" 800 x 480-pixel color touch screen with backlight
 - Support Bluetooth headset through USB Dongle
 - Up to 6 SIP accounts
 - Paper label free design
 - Headset, EHS support
 - Supports expansion modules
 - Wall mountable

- YEA-W52P SIP DECT Phone** **YEA-W52H Additional Handset**
- HD sound with wideband technology • Up to 4 simultaneous external calls • Up to 5 DECT cordless handsets
 - Range is up to 50 meters indoors; up to 300 meters outdoors dependent upon conditions
 - Up to 5 VoIP accounts • 1.8" color display • 11 hours talk time, 120 hours standby time • Integrated PoE (Class 1)
 - Desktop or wall mountable • Paging, Intercom, Auto answer • Call hold, Call transfer • 3-way conferencing
 - Call waiting, Mute, DND • Caller ID display, Redial • Call forward (Always/Busy/No Answer)
 - Message Waiting Indication (MWI) • Local Phonebook for up to 500 entries • Direct IP call without SIP proxy
 - Auto-provision via FTP / TFTP / HTTP / HTTPS • Auto-provision with PnP • Full-duplex speakerphone



TARGET'S YOUR BEST SOURCE FOR YEALINK PHONES

TOLL FREE – 800-873-5528 • LOCAL – 301-296-9400 • FAX – 301-296-9494

COST-EFFECTIVE HD IP TELEPHONES

C56P 1-Line

Entry Level IP Phone - PoE

- Supports SIP 2.0 (RFC3261)
- Power over Ethernet (PoE)
- 2 SIP Accounts
- 3 Line Segment LCD
- 4 DSS Keys
- 4 Function Keys
Conference, Transfer, Hold, Redial)
- 5 Navigation Keys
- 4 Menu Control Keys • HD Voice (Handset and Speaker)
- Two 10/100 RJ45 Ethernet Ports (Supports LAN Bridge Mode)
- Auto-Provision (HTTP/FTP/TFTP/PnP)
- Multiple Codec Support (G.711A/u, G.723.1 high/low, G.729 a/b, G.722.1, G.726)



C58P 2-Line

Entry Level IP Phone - PoE

- Supports SIP 2.0 (RFC3261)
- Supports IAX2
- Power over Ethernet (PoE)
- 2 SIPAccounts
- 128*48 FSTN Graphic LCD
- RJ9 Headset Jack
- 8 Programmable Function Keys -
4 Lighted (Voicemail, Headset, Line 1, Line 2) 4 Non-Lighted (Release, Directory, History, Redial)
- 5 Navigation Keys • HD Voice (Handset and Speaker)
- Two 10/100 RJ45 Ethernet Ports (Supports LAN Bridge Mode)
- Auto-Provision (HTTP/FTP/TFTP/PnP)
- Multiple Codec Support (G.711A/u, G.723.1 high/low, G.729 a/b, G.722.1, G.726)



C60 2-Line

Executive IP Phone - PoE

- Supports SIP 2.0 (RFC3261)
- Supports 2 SIP lines
- Multi-line HD Voice
- Supports IAX2
- Codecs: G.711A/u, G.723.1 high/low, G.729 a/b, G.722.1, G.726
- Acoustic echo cancellation • Full Duplex Speakerphone
- 9 Selectable Ringer Tones plus 5 User-Defined Musical Ring Tones • Headset or Speaker Ringing
- Large dot matrix LCD (128 X 64) • RJ9 Headset Jack
- 2 Line Keys - Programmable for other features • 8 DSS Keys
- 4 Context Sensitive Soft Keys • 5 Navigation Keys
- 3 Hard Function Keys • MuteKey
- Supports up to 5 C10 Expansion Modules
- 2 RJ45 10/100 Ethernet Ports (WAN/LAN)
- LAN Port Router or Bridge Mode • PPPoE for DSL
- Power Over Ethernet (PoE) • VLAN • 802.1



C62 4-Line

Executive IP Phone - PoE

- Supports SIP 2.0 (RFC3261)
- Supports 4 SIP lines
- Multi-line HD Voice
- Supports IAX2
- Codecs: G.711A/u, G.723.1 high/low, G.729 a/b, G.722.1, G.726
- Acoustic echo cancellation • Full Duplex Speakerphone
- 9 Selectable Ringer Tones plus 5 User-Defined Musical Ring Tones • Headset or Speaker Ringing
- Large dot matrix LCD (128 X 64) • RJ9 Headset Jack
- 4 Line Keys - Programmable for other features • 8 DSS Keys
- 4 Context Sensitive Soft Keys • 5 Navigation Keys
- 3 Hard Function Keys • MuteKey
- Supports up to 5 C10 Expansion Modules
- 2 RJ45 10/100 Ethernet Ports (WAN/LAN)
- LAN Port Router or Bridge Mode • PPPoE for DSL
- Power Over Ethernet (PoE) • VLAN • 802.1



C66 4-Line Gigabit

Executive IP Phone - PoE

- GigE Version • Supports SIP 2.0 (RFC3261)
- Two interfaces 10/100/1000 BaseT with support for bridge on NAT
- Supports 4 SIP lines
- Multi-line HD Voice • Supports IAX2
- Codecs: G.711A/u, G.723.1 high/low, G.729 a/b, G.722.1, G.726
- Acoustic echo cancellation
- Full Duplex Speakerphone
- 9 Selectable Ringer Tones plus 5 User-Defined Musical Ring Tones • Headset or Speaker Ringing
- Large dot matrix LCD (128 X 64) • RJ9 Headset Jack
- 4 Line Keys - Programmable for other features • 8 DSS Keys
- 4 Context Sensitive Soft Keys • 5 Navigation Keys • 3 Hard Function Keys • MuteKey
- Supports up to 5 C10 Expansion Modules • LAN Port Router or Bridge Mode
- PPPoE for DSL • Power Over Ethernet (PoE) • VLAN • 802.1



C10 Expansion Module

- Compatible with C60, C62 and C66
- 30 user programmable keys each with a dual-color LED
- Daisy-chain 5 modules for 150 programmable keys
- Dual color (red or green) LEDs for line status information
- Supports Busy Lamp Field, Presence
- Programmable for speed dialing, call pickup, intercom, hold, transfer, voicemail, forward, DND...
- First Module Powered by Host Phone. Additional Modules Powered by External Power Supply (Included)



IP INTERCOMS

2N Helios IP Vario

The 2N® Helios IP Vario intercom presents a stylish SIP door communication solution that will give you high quality and yet effortless communication. A single device features voice, video, keypad, card reader, and a color LCD display. NEMA IP53 Rated housing.

Features:

- Audio, video and keypad solution in one box
- Pure IP environment
- PoE (Power over Ethernet) or 12V DC external power source
- Color TFT display with an intuitive user interface
- High quality audio (codec G.711, G.729) and real time high quality video (codecs H.263+, H.264)
- Remote control and administration for your convenience and mobility
- Simple installation and integration with any SIP based 3rd party devices
- Weather resistance – Marine Grade Steel case with IP 53 cover
- Variety of models and accessories that fits all customer requirements
- Convenient way to monitor and control entry of visitors remotely
- Representative look
- Easy setup and maintenance



2N Helios IP Uni

2N® Helios IP Uni, is a SIP Intercom which provides a cost effective solution for access control and communication. It offers full-duplex audio with echo cancellation, integrated relay for door entry systems and 1 or 2 fully back-lit buttons. 2N® Helios IP Uni is ideal for schools, parking lots, shopping malls, hospitals or public buildings. It can be used as an information/emergency help point or as a door entry system.

Due to its innovative design and available accessories, 2N® Helios IP Uni will save you time needed for installation and offers you variety of mounting options such as on the wall, plasterboard or flush mount.

Features:

- Easy installation • 1W Speaker • 1 or 2 back-lit buttons • Tamper switch

Benefits:

- Cost effective door IP Intercom solution
- Relay controlled by DTMF
- Stainless steel front panel
- Compatible with 2N® Helios IP Manager



2N Helios IP Force

The 2N® Helios IP Force - IP intercom offers a smart and effective solution for the secure access control and monitoring of a building entrance. Voice and video transmission is provided by standard SIP/RTP/RTSP protocols, which guarantee the best compatibility and integration with third-party IP systems.

The 2N® Helios IP Force is designed for operation in the most demanding conditions. The robust mechanical construction offers the highest protective coverage rating against dust and water and protection against mechanical damage (vandal resistant). Numerous deluxe features of the 2N® Helios IP Force provide high user comfort and guarantee secure access control for any extreme environment.

Features:

- Maximal resistivity against dust, water, and mechanical damage
- High clarity and volume in noisy environments
- Wide-angle colour camera with night vision
- Illuminated buttons and backlit keyboard
- Integrated RFID card reader



2N Helios IP Safety

2N® Helios IP Safety is designed as the ideal intercom for emergency voice communication under extreme conditions. Its striking orange colour and backlit button guarantee that it cannot be overlooked and also guarantee its functionality in crisis situations and under adverse lighting conditions - in a smoke-filled environment for example.

2N® Helios IP Safety provides the highest level of protection against dust and water and mechanical damage, and it is thus also resistant to rough handling and adverse weather conditions.

2N® Helios IP Safety can also be used in very noisy environments thanks to two integrated microphones suppressing background noise and a speaker with performance of up to 10W. The powerful speaker also makes it possible to use 2N® Helios IP Safety as a loudspeaker if necessary.

Features:

- Maximum resistance to dust, water and mechanical damage
- High level of comprehensibility and high volume in noisy environment
- Striking colour for easy identification under poor lighting conditions
- Backlit anti-vandal button made of stainless steel
- Integrated relay for controlling external devices



IP PAGING SOLUTIONS

2N NetSpeaker – IP Audio and Paging System

- 10/100Base-TX Ethernet (RJ45)
- Integrated 14W power amplifier
- Supports 4, 8, and 16 Ohm speakers
- MicroSD card slot for additional playback options
- Digital input and output
- Integration with SIP-VoIP systems
- Automated playback of scheduled announcements
- Easy to deploy and use



2N SIP Speaker – IP Paging System

- Digital input and output
- Power supplied via PoE or adapter
- Audio surveillance via RTSP
- Powerful built-in amplifier and line out
- Input for external microphone
- Effective public address device
- Utilization of existing LAN/WAN network
- Web interface or unified software for centralized configuration
- Remote control



CALL RECORDING

Stand Alone Desktop Call Recording Unit No PC Required – Analog

Call Tracker

- A complete stand-alone 4 or 8 line Call Recorder, nothing else is required! (SIP Trunk Support under development)
- Records all call activity including:
 - Full call conversation–Date & Time of call–Caller ID (in) or dialed digits (out)
 - Duration of call–Unanswered calls including date/time info
- SMDR Integration to most Phone Systems
- Optional Auto-Announcement to inform callers that calls are being recorded
- 8GB of on board storage (SD Card) for thousands of hours of calls to be recorded
- Touch screen panel provides line status, programming and playback options
- Provided with Call Tracker Manager PC based supervisor position
- Connect onto your LAN/WAN for easy access and download of recordings
- Includes Management Player software that allows you to transfer calls from the device to a computer (if connected in network mode) and play the calls

CT-4	4-Line Call Recording Unit
CT-8	8-Line Call Recording Unit



Stand Alone Rack Mount Call Recording Unit with Built-In 1TB HDD – Analog

Call Tracker Plus

The Call Tracker Plus Series recorder can be used at a single location or it can be used as part of a larger centrally managed Multi-Site application. The Call Tracker Plus series can be configured for 8, 16, 24 or 32 line capacity and can be set to record a combination of lines, analog extensions, or radio channels.

The Call Tracker Plus series comes standard with a 5" HD color touch screen display, 1 TB Hard Drive (70,000 hours of calls) as well as the ability to integrate with your PBX via an SMDR interface that will enable you to track the calls to the extension that made or received the call.

Other features include:

- Built-In Speaker • Remote Upgradeable Firmware
- Recording warning announcement or beep tone option
- Auto-Gain Control • E-Mail Notifications
- Live Call Monitoring • Statistical Reports
- Multi-User Account Access Controls
- Includes Management Player software that allows you to transfer calls from the device to a computer and play the calls, email, live monitor and review statistical data

CTPlus 8	8-Line Call Recording Unit
CTPlus 16	16-Line Call Recording Unit
CTPlus 24	24-Line Call Recording Unit
CTPlus 32	32-Line Call Recording Unit



Digital PBX Phones

XTR Dig01

- Connects to the digital extension wiring at your desktop to record phone calls to PC
- GSM compression gives 170 hours recording per GByte
- Delivers outstanding digital sound quality
- Uses PBX digital info such as Caller ID (on most models)
- Records calls locally or across a network with included XTR Desktop Software
- Multiple PCs can be networked and calls stored in a centralized location



XTR Dig04

- Connects to the digital extension wiring in the PBX switch room
- Entry level product with 4 extensions per unit
- Up to 3 units can be used on one PC
- Can be combined with Dig16 Digital Telephone Recorder units, up to 48 ports per PC



XTR Dig16

- Connects to the digital extension wiring in the PBX switch room
- Rack mounted Telephone Recording Device with 16 extensions per unit
- Up to 3 Dig16 devices can be used (up to 48 extensions) on one PC
- Multiple PCs can be used to increase Capacity

For IP Phones

XTR ipTAP

- Plug n play, installed and configured to Record your SIP phone in seconds
- Hi Impedence monitor only, does not interfere or transmit in any way
- USB device with dedicated drivers that talk directly to the IP Phone Recorder application
- Does not require secondary Ethernet or complex reference to IP addresses for installation, finally a simple IP Phone Recorder
- Small, easily concealed (only 4.25" x 3" x 1" in size)
- Scalability , from 1 phone to 100's .
- Integration with SIP phones, NEC IP Phones, Avaya IP Phones, Cisco IP Phones, Mitel and Nortel



IP Back Office Recording Software

XTR BO4ip

XTR BackOffice 4IP Recorder Software resides on a PC in the Telephone System room, and is the Call Recorder Software that works in conjunction with the IP Recording, Digital 04 Telephone Call Recorder, Digital 16 Phone Recorder, Analogue 02, Analogue 04 or Analogue 08 hardware solutions and becomes the Phone Recorder Software that drives these devices.

- Mix any combination of IP, digital PC Phone Recorder and analogue Phone Call Recorders
- IP, Direct line or behind PBX connection
- Caller ID and digits dialed recorded by Phone Call Recording Software
- Audio balancing on per port basis within Telephone Call Recording Software
- Store calls anywhere on your network
- Ignore short calls setting within Phone Call Recorder Software - eliminates very short recordings
- Archive management available in Phone Call Recording Software on a per channel basis
- Simple to set-up and change Call Recorder Software as needed • Email Notification of system restarts or faults



VALCOM IP PAGING

AUDIO

VIP-801 1 Port

- 1 Audio Output • 1 Audio Input • 2 Programmable Form C Relay Closures • RJ-45 For Network Connection
- No Server Required • 1 to 11 Digit Dial Plans • Easy Windows Based Setup • AUX Audio input
- Contact Closure Available for: Audio Indication and Door Unlocking

VIP-802 2 Ports As above except: • 2 Audio Output • 2 Audio Input • 2 Programmable Form C Relay Closures • 2 Programmable Contact Closure Inputs

VIP-804 4 Ports As above except: • 4 Audio Outputs • 4 Audio Inputs • 4 Programmable Form C Relay Closures • 4 Programmable Contact Closure Inputs

FXS

VIP-811 1 Port

- 1 FXS Port • 2 Programmable Form C Relay Closures • Provides Caller ID • No Server Required • 1 to 11 Digit Dial Plans • Easy Windows Based Setup • AUX Audio input
- Contact Closure Available for: Audio Indication Ringing Indication and Door Unlocking

VIP-812 2 Ports As above except: • 2 FXS Ports • 2 Programmable Form C Relay Closures

VIP-814 4 Ports As above except: • 4 FXS Ports • 4 Programmable Form C Relay Closures

FXO

VIP-821 1 Port

- RJ-45 for network connection • 1 RJ-11 FXO • 1 RJ-11 telephone failover connection • Front panel activity LED • Network activity LEDs • 2.5mm jack for DC

VIP-822 2 Ports

- RJ-45 for network connection • 2 RJ-11 FXO • 2 RJ-11 failover telephone connections • Decode Caller ID signals • Front panel and network activity LEDs
- 2.5mm jack for DC power

VIP-824 4 Ports

- RJ-45 for network connection • 4 RJ-11 FXO • 4 RJ-11 failover telephone connections • Decode Caller ID signals • Front panel and network activity LEDs
- 2.5mm jack for DC power



PAGE PRO IP

VIP-201

1 Zone of One-Way Analog Paging Plus 8 Zones of IP Paging

VIP-204

4 Zones of One-Way Analog Paging Plus 8 Zones of IP Paging

- Multiple Simultaneous Pages • Live or Recorded Messages • 65,000 Speakers, Expandable To 256 IP Paging Zones
- Compatible With Cisco, Nortel, Avaya, Iwatsu And Most IP Telephone Systems • Supports IP And Analog Amplified Speakers • Supports IP Talkback Speakers
- Supports Legacy Paging Systems • Synchronized Clock Compatibility • PoE (802.3af) Or Local Power • SIP And Multicast • Feedback Eliminator • DHCP



VIP-324 -24 Vdc/120 Vac Power Supply • 24 Volt DC "B" Battery Power Supply • Input Thermal Fuse Protected • Floating Output • Through Ground Connection • UL, CSA

SIP Ceiling Speakers

VIP-120

SIP One-Way 8" Ceiling Speaker

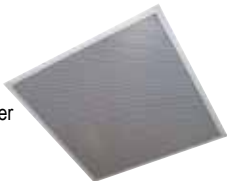
- PoE (802.3af)
- High-Efficiency 8" Speakers
- Durable Electrostatic Powder Coat Finish on Metal Surfaces
- Output Level 103 db/1Meter
- Line Output Supports Valcom Amplified Speakers



VIP-402

SIP One-Way 2 x 2 Lay In Speaker

- PoE (802.3af)
- High-Efficiency 8" Speaker
- Durable Electrostatic Powder Coat Finish
- Output Level 103 db/1Meter
- Line Output Supports Valcom Amplified Speakers
- Backbox Included



SIP Doorplate Speakers

VIP-172L-Brass Brass Face

VIP-172L-ST Stainless Steel Face

- SIP DoorPhone w/ Door/Gate Relay • PoE Compatible • Easy, RJ45 Plug in Connection
- Use with Cisco, Nortel, Avaya, & Most Modern IP Telephone systems • Companion to IP CCTV Cameras
- Call button calls any SIP address or any Valcom Gateway • Automatic Talkback VOX Operation
- Includes Long Line extender – up to 300 Meters Between Network Interface and Door Speaker

VIP-172L-VR Vandal Resistant Stainless Steel Face • As above in a vandal-resistant enclosure

SIP Horns

VIP-480L

SIP One-Way Horn with Long Line Extender

- PoE (802.3af) • Weather-Resistant
- Includes Long Line Extender for Cabling Up to 1200 Feet • Indoor/Outdoor
- Beige (BG), Gray (GY), and Marine White (W)



VIP-130L

SIP One-Way Horn with Long Line Extender

- 5-Watt IP Horn
- PoE (802.3af)
- Weather-Resistant
- Includes Long Line Extender for Cabling Up to 1200 Feet
- Indoor/Outdoor
- Beige (BG), Gray (GY), and Marine White (W)



V-9805

Vandal Resistant Enclosure

- Provides A Virtually Indestructible, Recess Mounted Speaker
- Non-Loosening Screws
- Stainless Steel



SIP Wall Speakers

VIP-410

One Way 8" Amplified Wall Speaker

- Sleek, modern design
- 8" speaker
- Gray w/ black cloth grille
- Paintable metal housing
- Easy Installation
- Screw terminals
- Uses Standard CAT 3/5/6 Cable
- Excellent voice & music reproduction



VIP-411-DS

One Way 8" Amplified Wall Speaker with Digital Clock

- PoE (802.3af)
- 2.5" - 5 Character
- Red LED's
- Only One Ethernet Port Connection Required
- Output Level 103 db/1Meter



VIP-412-DF

One Way IP Speaker Faceplate Unit

- PoE (802.3af)
- 2.5" - 5 Character
- Red LED's Other LED Colors On Request
- Only One Ethernet Port Connection Required
- Output Level 103 db/1Meter
- Line Output Supports Valcom Amplified Speakers



IP PAGING SPEAKERS, PERIPHERALS and INTERCOMS

CyberData offers the largest selection of IP Endpoints for the VoIP marketplace. They design and manufacture peripheral devices for VoIP phone systems. Their devices facilitate legacy migration to VoIP, IP equivalents to existing analog devices, and application specific endpoints that add new functionality. CyberData's VoIP products, such as Paging Amplifiers and Gateways, IP Speakers, and IP intercoms and notification devices are cost-effective and easy to manage solutions for VoIP phone systems.

Choose the right CyberData device to integrate into the network and deploy a mass notification system combining one-way paging, two-way communication, and secure access. Perfect for schools and universities, hospitals and nursing care facilities, manufacturing plants, retail environments, and more!

IP Paging and Mass Notification

CyberData's SIP-enabled IP Paging Endpoints utilize digital communication technology in place of outdated analog technology. This increases reliability and allows a broader range of useful information to be transferred between devices. Features include:

- SIP (RFC 3261) compatible
- Simultaneous SIP and multicast
- Web-based configuration, upgradeable firmware, and speaker volume control
- Paging prioritization
- Autoprovisioning
- PoE 802.3af Enabled (Powered-over-Ethernet)
- DTMF-controlled relay
- And more!



- 011098 Gray**
011099 White
SIP Ceiling Speaker
- Night Ringer function
 - Plays audio from multicast
 - Web-based configuration
 - External volume control
 - Small footprint
 - PoE 802.3af Enabled



- 011146**
Paging Server
- Voice prompting
 - Password-controlled zones
 - Supports 600Ω output
 - Multicast output
 - Two SIP endpoints (one for Night Ringer)
 - Line-In for music
 - Line-out to support analog Amps



- 011087**
SIP Strobe
- Meets ADA requirements
 - SIP activation
 - Multicast activation
 - Event-controlled relay
 - Tamper sensor
 - Web-based setup
 - PoE-powered



- 011153**
Wall Mount Clock Kit with 011180 Talkback Speaker
- Wall or ceiling mount
 - Mounting kit included
 - 2.3-inch sized digits
 - 12 or 24 hour format
 - NTP time source
 - Battery backed up
 - Auto ambient light adjustment



- 011216**
SIP Office Ringer
- SIP and multicast compatible
 - Night Ringer function
 - POE 802.3af
 - Network firmware upgradeable
 - Intrusion sensor
 - Dry contact relay



- 011095**
25-Watt Paging Amp
- SIP and Simultaneous Multicast
 - Night Ringer function
 - Dual-speed 10/100
 - PoE 802.3af and
 - Line-out connector
 - In NEMA 3R/IP42-rated enclosure



- 011187**
2-Port Gigabit Switch
- 2-Port auto-negotiating (no cross or cable required)
 - 10.100.1000 full duplex (PoE-powered)
 - Link/Status and connection speed LEDs
 - RoHS Compliant



- 011049**
SIP Call Button
- User downloadable message up to 80 seconds
 - Single button call to pre-set number
 - Continuous repeat of message
 - PoE-powered



- 011233**
SIP Paging Adapter
- SIP to Analog
 - Line-in to Analog
 - Multicast to analog
 - HTTPS command interface
 - 10 SIP extensions
 - 10kΩ input for MOH
 - 600 Ω audio out
 - Unbalanced Line-Out
 - 10/100 802.3af PoE



- 011236 3-Port Ethernet Gigabit Switch**
- 3-port auto-negotiating
 - 10/100/1000 full duplex
 - USB-powered (no external power supply required)
 - Link/Status and connection speed LEDs
 - Low power

IP Intercoms

Two-way Communication and Secure Access – These SIP-enabled IP intercom features include:

- SIP compliant
- PoE 802.3af enabled (Powered-over-Ethernet)
- Adaptive full-duplex voice operation
- Network web management, speaker volume & mic sensibility, and downloadable firmware
- Doubles as a paging speaker
- Dry relay contact for door access
- Peer-to-peer capable
- Door closure and tamper alert signal



- 011186**
V3 Outdoor Intercom
- PoE 802.3af enabled
 - Adaptive full-duplex voice operation
 - Doubles as a paging speaker
 - Dry relay contact for auxiliary control



- 011214**
Outdoor Keypad Intercom
- PoE 802.3af enabled
 - Adaptive full-duplex voice operation
 - 12-key keypad with backlight
 - Programmable speed dial



- 011211**
V3 Indoor Intercom
- Simultaneous SIP and multicast
 - Night Ringer function
 - Dual speed 10/10
 - POE 802.3af
 - Tamper sensor
 - Dry contact relay



- 011113**
Indoor Keypad Intercom
- Simultaneous SIP and multicast
 - 12-key keypad
 - Night Ringer function
 - Dual speed 10/10
 - POE 802.3af
 - Tamper sensor
 - Dry contact relay



- 011209**
V3 Emergency Intercom
- Simultaneous SIP and multicast
 - Night Ringer function
 - Dual speed 10/100
 - POE 802.3af
 - Tamper sensor
 - Dry contact relay

IP PAGING SPEAKERS, PERIPHERALS and INTERCOMS



011061 SIP-enabled IP V2 Paging Amplifier

The CyberData SIP-enabled IP V2 Paging Amplifier is a Powered over Ethernet (PoE 802.3af or 802.3at) and VoIP paging device that provides an easy method for implementing an IP-based overhead paging system for both new and legacy installations.

With up to 25 watts of driving power (802.3at), the Amplifier provides direct drive of a standard Horn speaker and supports a line out connector for connection to an external amplifier. The interface is compatible with most SIP-based IP PBX servers that comply with the SIP RFC 3261. For non-SIP environments, the Paging Amplifier can be configured to listen to multicast address and port number combinations to form paging zones.

Features Include:

- SIP compatible • Night Ringer function • Dual speed 10/100 Mbps • Web-base firmware upgradeable
- Power-over-ethernet enabled • IGMP • Autoprovisioning • Line-out connector

011258 2-Port PoE Gigabit Port Mirroring Switch

The CyberData 2-Port PoE Gigabit Port Mirroring Switch enables users of a network attached device to split a single 802.3af or 802.3at PoE powered Gigabit Ethernet port into two Gigabit Ethernet ports for diagnostics purposes while still maintaining a PoE connection to the attached device



- Port Mirroring
- 2-Port auto-negotiating (no crossover cable required)
- 10/100/1000 full duplex (PoE-powered)
- Link/Status and connection speed LEDs
- VLAN Packet Forwarding

011259 3-Port PoE Gigabit Port Mirroring Switch

The CyberData 3-Port USB Gigabit Port Mirroring Switch enables users of a network-attached device to split a single Gigabit Ethernet port into two Gigabit Ethernet ports for diagnostics purposes.



- Port Mirroring
- 3-Port auto-negotiating (no crossover cable required)
- 10/100/1000 full duplex
- Powered by USB or 5V source (no external power supply required)
- Link/Status and connection speed LEDs
- Low Power • VLAN Packet Forwarding
- Ideal for use with network-monitoring software such as WireShark

011288 Auxiliary Strobe

- Cost-effective and user installable
- 5 user blink scenes available
- Setup of the strobe's blink rates and brightness are through the web interface of the attached CyberData IP endpoint
- Meets ADA requirements for telephony signaling and notification
- Activates from a CyberData IP endpoint
- Mailbox message waiting indication
- Includes 2-meter cable • Available in Q2 2014



011287 Protective Dome Kit

The virtually clear and sealed polycarbonate dome is suitable for both indoor and outdoor applications.

- UL/cUL Hazardous Listed
- Type 4X Rated. Dust tight (Class II Group F and G Div. 2). All Class III locations
- Mounting hardware for the strobe included
- Works with the 011087 SIP Strobe and the 011288 Auxiliary Strobe



VoIP Desktop Speaker

The CyberData Desktop Speaker is small footprint Power over Ethernet (PoE)-powered notification device that fits easily onto a desk or table. The CyberData Desktop Speaker has a built-in Gigabit switch that enables a single network connection to a cubical or a desk to be used to communicate to both to the Desktop Speaker and a second network device (like a VoIP phone or computer). A web-based configuration page allows easy setup as a SIP endpoint and/or a Multicast listening device. In addition, a second SIP endpoint can be configured to play a user-uploadable audio file when called for use as a night ringer.

Features Include:

- PoE 802.3af enabled (Powered-over-Ethernet) • SIP compliant • One Port 10/100/1000 switch
- Network web management • Network volume control • Multicast support • Network downloadable firmware
- Doubles as a paging speaker • Cisco SRST support • Multi button 2 way intercom option • Available in late Q2



011269 Door Strike Relay Module

When connecting a CyberData Intercom to an electronic door lock, the high current side of the door strike requires a separately-wired relay and protection diode. This module allows direct connection to CyberData Intercom products.



- 4 wire interface • 12 Amp relay • NO/NC contacts
- Opto-isolated sense input • Power is provided from relay voltage
- Wall mounting • Cable strain relief • Lock status LED
- Available in Q2 2014

011270 Network Relay Module

As part of a networked security infrastructure, the CyberData Network Relay Module allows monitoring and control of devices that require high current switching. This Module is PoE powered and provides encrypted communication.



- AES encryption (up to 256 bit)
- Discoverable by CyberData VoIP products • Device status LED
- Windows setup utility with diagnostics • Wall mounting
- Real time clock with event logging function • 12Amp relay
- NO/NC contacts • Opto-isolated sense input • Available in Q2 2014



YOU SHOULD BE SELLING SIP TRUNKING – HERE'S WHY

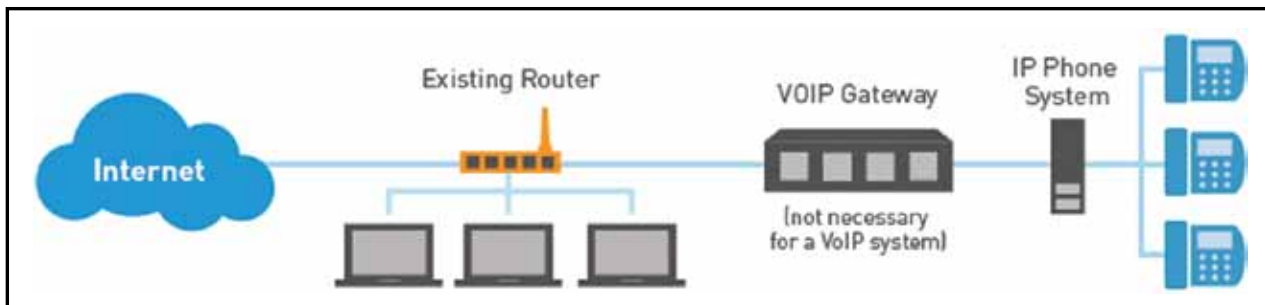
What is SIP Trunking?

SIP Trunking lets your customers save up to 50% on their phone bills by routing their calls over the Internet, instead of through the phone company.

How does it work without SIP Trunking? A typical phone company charges businesses on a per-line basis for physical phone lines from their central office. Customers invest a lot when they deploy these lines, and adding more as they grow is expensive.



SIP Trunking is different. It routes all your customers' calls over their Internet connection.



Here's how SIP Trunking helps your customers:

- Consolidate their voice and data traffic
- No longer pay for expensive phone lines from the phone company
- Cut costs up to 50 percent—with no loss in either their capacity to make and receive calls, or the quality of those calls
- Improve the reliability of their phone system by avoiding the threat of local outages
- Most newer phone systems are compatible with SIP Trunking with no extra equipment

SIP Trunking brings new life to your customers' existing phone system or provides the savings catalyst to purchase a new phone system—while cutting your operational costs and preserving your capital.

Best of all, with SIP Trunking, your customers can say goodbye to the phone company—forever.



Call Intermedia's VIP Desk at 877.552.4729 to Start Selling SIP Trunking Today



INTERMEDIA®

IP TELEPHONY

YOU SHOULD BE SELLING SIP TRUNKING – HERE'S WHY

Why Intermedia? Because We Make SIP Trunking Worry-Free.

With Intermedia, SIP Trunking is easy to deploy and easy to manage. Once your customer is up and running, you can manage the solution with our intuitive online control panel .

Setup and migration: Our Cloud Concierge team makes it easy. Our expert cloud concierge team performs all switching, number porting, and migration for you.

Installation: Intermedia guides partners thru the entire set up:

- Inspecting the current phone system for SIP Trunking compatibility
- Performing any physical and digital tasks necessary to transfer phone trunks
- Testing the customer's network to ensure it has high-quality call support capability
- Setting up and deploying VoIP gateways, if necessary
- Performing any necessary on-site support



Management and administration: You'll manage SIP Trunking using Intermedia's powerful online management console. Simply go online to perform activities such as:

- Configuring all aspects of SIP Trunking
- Administering SIP Trunking from any location, both on-site and off-site
- Administering E-911 settings
- Submitting online support requests
- Viewing bills

Lower Costs & Higher Reliability: The Benefits of SIP Trunking

SIP Trunking can work with your existing phone system!

Most popular IP phone systems are directly compatible with SIP Trunking. And every analog and digital system can be made compatible by installing a small VoIP gateway. Most of your customers can start saving with SIP Trunking today.

Improve your customer' phone system reliability

SIP Trunking improves the reliability of your customers' phones by letting them leverage our enterprise-grade datacenters—and by giving you tools that protect against local outages.



Customers' calls going through—no matter what

From natural disasters to power outages, every business faces some degree of threat to business continuity. SIP Trunking ensures your customers don't suffer the consequences. For example in the event of a local disruption, SIP Trunking can automatically forward calls to failover numbers such as cell phones or to a designated voice mailbox.

BECOME AN INTERMEDIA AGENT TODAY & BENEFIT YOUR COMPANY'S BOTTOM LINE

Agent Model

Agents resell Intermedia plans. Intermedia services the account and pays you a recurring monthly commission over the life of the customer account.

- Leverage the Intermedia brand to drive sales.
- Earn a recurring monthly commission over the life of the account.
- Let Intermedia handle customer billing and technical support.



Call Intermedia's VIP Desk at 877.552.4729 to Start Selling SIP Trunking Today

SELL SIP TRUNKING – CALL 877-552-4729 TO GET STARTED

TOLL FREE – 800-873-5528 • LOCAL – 301-296-9400 • FAX – 301-296-9494

MULTI-LINE CORDED SYSTEMS

AT&T 1040 4-Line Speakerphone with Intercom

- Page, Intercom & Call Transfer Between Stations • 32 Speed Dial and 16 Intercom Locations
- Expandable to 16 Stations • 3-Party Conferencing • Speakerphone • Headset Compatible (2.5 mm)
- Chain Dialing • Rapid Scroll • 4-Line Lighted Display • Memory Loss Protection • Auto Line Selection • Hold
- Line Status • Do Not Disturb • Auto Redial • Last 6 Number Redial • Mute • 2 Data Ports
- Power Failure Operation of all 4 Lines • Handset, Speaker & Headset Volume Control • Flash
- Selectable Ring Tones • Hearing Aid Compatible

AT&T 1070 4-Line Speakerphone with Intercom and Call Waiting Caller I.D.

- Same as AT&T 1040 but adds Call Waiting Caller I.D.

AT&T 1080 4-Line Speakerphone with Intercom, TAD/Auto Attendant & Call Waiting Caller I.D.

- Same as AT&T 1070 but adds built-in digital telephone answering system/auto attendant with 60 minutes recording time



MULTI-LINE CORDED/CORDLESS SYSTEMS

SynJ SB67138 4-Line Corded/Cordless Small Business System with Auto Attendant

- 1 to 4 Line Capability • DECT 6.0 Zero Blind Slot Digital Technology—up to 10 accessory handsets active at the same time • Extended Range • Corded Base and Cordless Handset • Push-to-Talk Intercom—from base to handset & handset to handset • Expandable System (use up to 10 SB67108 cordless handsets)
- Intercom and Call Transfer Between Stations • 10 Speed Dial and 10 Intercom Number Locations
- 3-Party Conferencing • Speakerphones in Handset and Base • 4 Lighted Line Indicators
- Selectable Ring Tones • Handset, Speakerphone, Headset and Ringer Volume Control
- Last 10 Number Redial • 100 Name/Number Phonebook Directory • External Music on Hold
- 50 Name/Number Caller ID History • Up to 180 Minutes of Digital Recording Time • Auto Attendant on Each Line
- Individual Voicemail Boxes for Each Extension • Remote Access with Programmable Options • Memo Recording
- Call Screening/Intercept • Message Retrieval from Handset • Message Time/Day Stamp • Voice Prompts

SB67108 Cordless Expansion Handset for SB67138 Base

SynJ SB67148 Expandable 4-Line Cordless Deskset (Requires SynJ SB67138 Above To Operate)

- Last 10 Number Redial • Selectable Ring Tones • English/Spanish Setup Menu • Ringer Volume Control
- Headset Compatible (2.5 mm) • 10 Number Speed Dial • Chain Dialing • 3-Party Conferencing
- Large Blue Lighted Display • Receiver/Speakerphone/Headset Volume Control • Hearing Aid Compatible
- Hold • Mute • Intercom Between Handset and Base • Intercom Between Handsets • Base Speakerphone
- Call Transfer Using Intercom • 1 to 4 Line Capability • 100 Name/Number Phonebook Directory
- Push-To-Talk for instant and easy communication between handsets

SynJ SB67128 DECT 6.0 Range 4-Line Repeater

- DECT 6.0 Zero Blind Slot Digital Technology—up to 10 Accessory handsets active at the same time
- Connect up to 6 Repeaters to 1 Corded Base Unit
- Extendable Range—up to 980 feet per repeater, up to two repeaters linked for 2940 feet of range



MULTI-LINE CORDED SYSTEMS

Panasonic

KX-TS4300B 4-Line Speakerphone

- Expandable up to 16 stations • Caller ID, call waiting caller ID
- 200# Phonebook and dialer • 200# Caller ID memory & dialer
- 3-Way conferencing • 16 x 2 keys one touch operation
- 4-Line backlit LCD • 2.5mm Headset jack
- Speakerphone with in-use indicator
- Handset/headset receiver volume control (5 level)
- Telco voicemail compatible • 4 Selectable ring tones • Auto line selection
- Prime line preference • Line group selection • Intercom • Voice paging
- Call transfer • DND • Battery backup system (9V battery sold separately)
- Digital answering system with 60 minutes of record time • Automated attendant
- Remote operation • Wall mountable • Compatible with KX-TS4100B and KX-TS4200B • Black only

KX-TS4200B 4-Line Speakerphone As above except no TAD/auto attendant

KX-TS4100B 4-Line Speakerphone Same as KX-TS4200B above except no Caller I.D.



ET4300

4-Line Intercom Speakerphone with Caller I.D. & Jumbo Pivoting Display

- Expandable to 16 stations • Full featured intercom with Off-Hook Voice Announce
- Paging • Station status indication • Call Waiting Caller I.D. on all 4 lines
- 50 name and number Caller I.D. list • New call lamp and visual MW indicator
- Centrex compatible • Centrex code storage • Private line compatible
- Can serve as Centrex console to answer other ringing Centrex lines
- Handsfree speakerphone • 3-way conference calling • 2.5mm headset ready
- Jumbo backlit LCD display with call timer • Network services button • Data/fax jack
- Automatic line selection • Do-Not-Disturb • Toll Restriction • Line privacy on/off
- Static memory for memory dial retention without power or battery
- Separate handset, headset and speakerphone volume controls
- Line reserve for next available line • AC powered (required adapter included)
- 2-Year Warranty



EV4500

4-Line Intercom Speakerphone with Caller I.D., Voice Mail & Auto Attendant

- Expandable to 16 Stations • Caller ID and Call Waiting Capability
- Hands Free Speakerphone • 3-Way Call Conferencing
- Data/Fax Jack • Backlit LCD Display • DND
- Centrex Compatibility • Headset Jack • Jumbo backlit LCD display with call timer
- Static Memory Requires No Power or Battery Backup to Retain Stored Info
- Separate handset, headset and speakerphone volume controls • 2-Year Warranty

Voice Mail/Auto Attendant Features:

- 8 Selectable Greetings • 30 Minutes of Digital Message Recording
- Timer Controlled Greetings • Line Specific Greetings
- Variable Speed Message Playback • Memo and Conversation Record
- Built-in Centrex Auto Attendant



ADD-ON FEATURE MODULES FOR ET4300 or EV4500

800-EFM External Feature Module

Adds Either **Music-On-Hold**, External Paging or Door Intercom/Door Opener Capability. Note: Only one feature may be operated at a time (switch selected). Multiple modules necessary to operate multiple features simultaneously.



810-ECA Cordless Telephone Adapter

Allows addition of any single line cordless telephone which can answer any of the ringing lines, conference, intercom and transfer calls. Caller ID ready.

VM2000 2 Line Speakerphone with Caller ID and Jumbo Pivoting Display

- DSL Ready - Phone has a built in DSL filter
- Visual Message Waiting Indicator – Flashing lamp indicates messages in your Telephone Company mailbox
- Voice Mail Navigation Buttons - Work with Telephone Company voice mail and are preset with all the appropriate codes to make using your voice mail service easy and convenient
- Personal Directory Dialing - Store up to 80 names and numbers, for easy dialing from your telephone
- Headset Jack - A dedicated 2.5mm headset jack with a dedicated headset button and a built-in headset amplifier makes adding a headset easy and convenient
- Music on Hold – Built in music on hold input jack for connection to any music source - will provide music to caller placed on hold
- Super large backlit LCD - Shows number dialed, clock, calendar and full caller ID information



CORDED TELEPHONES



210-Black/White

Trimline Telephone

- Fully Illuminated Dial Buttons
- 10-Number Memory
- 3 One-Touch Memory Buttons
- Receiver Volume Control
- Redials Last Number Dialed
- Desk or Wall Mount • In White or Black



1909 Trimline with Caller ID

- Caller ID/Call Waiting Capability
- 50 Name/Number Caller ID History (requires 4 AA batteries—not included)
- No AC Power Needed
- English/Spanish/French Setup Menu
- Display Dial • 13 Number Memory
- Mute • Flash • Redial
- Ringer Volume Control
- Receiver Volume Control
- Table/Wall Mountable



2909

Caller ID Speakerphone

- Speakerphone
- 14 Number Memory
- Hold • Redial • Flash • Mute
- No AC Power Needed
- English/Spanish/French Setup Menu
- Caller ID/Call Waiting Capability
- 65 Name/Number Caller ID History
- Requires 4 AA batteries (not included)

ML17929

Two-Line Speakerphone

- 2-Line Operation
- Speakerphone
- 3-Party Conferencing
- Caller ID/Call Waiting
- 18 Number Speed Dial
- 100 Name/Number Phonebook Directory
- 99 Name/Number Caller ID History
- Line Power Mode
- Selectable Ringer Tones for Both Lines
- Headset Compatible (2.5mm jack)
- Line Status Indication
- Data Port
- Hold & Mute
- Automatic Line Selection
- Display Dial



ML17939

Two-Line Speakerphone with Digital Answerer

- 2-Line Operation
- Speakerphone
- 3-Party Conferencing
- 100 Name/Number directory
- Selectable Ringer tones for both lines
- Headset compatible (2.5mm jack)
- Line status indication
- Data port • Hold • Mute
- Automatic Line Selection
- Chain dialing
- Caller ID/Call Waiting Capability
- 99 name/number caller ID history • Display dial
- Up to 12 minutes of digital recording time for each line
- Call screening/intercept • Remote access
- Message time/day stamp • Voice prompts
- Memo recording



CL2940 Speakerphone

- Line powered • Mute • Last number redial
- Flash • Receiver volume control
- Ringer volume control
- Table- and wall-mountable
- ClearSpeak® dial-in-base speakerphone
- Speakerphone volume control
- Caller ID/call waiting
- Big button big display
- Extra-large tilt display for easy viewing
- Visual ringing indicator • Black only



CL4940 Speakerphone w/ Digital Answerer

- Up to 25 minutes of incoming messages, outgoing announcements and memos
- Mute • Last number redial
- Flash • Receiver volume control
- Desk/wall mount • Big button big display
- ClearSpeak® dial-in-base speakerphone
- Speakerphone volume control
- Caller ID/call waiting
- Extra-large tilt display for easy viewing
- Visual ringing indicator • White only



2500-B-XX No Dial Desk Phone

2554-B-XX No Dial Mini-Wall Phone

- Allows incoming calls only
- Factory refurbished – like new • 1-year warranty

AS = Ash BK = Black RD = Red

NO-DIAL DESK and WALL PHONES



Applications:

- Ringdown phones
- Pool phones
- Catalog sales
- Kiosks in malls
- Courtesy phones
- Automated tellers
- Security and emergency phones

KX-TS880-B/W Speakerphone

- Step Tilt Angle
- Navigation Key
- Hands-Free Speakerphone
- Programmable Flash Time
- 15.6" Coil Cord
- Ringer Indicator (LED)
- Call Waiting Caller ID
- 30 One-Touch Dialer Stations: 10 One-Touch and 20 Two-Touch
- 2.5mm headset jack
- Redial (Last 20 numbers Dialed)
- In White or Black



KX-TS208-W

2-Line

Speakerphone

- Conference
- Distinctive ring
- 16-digit LCD with clock
- Programmable restriction
- 10-number 1-touch speed dial
- Data port
- Redial • Pause • Headset compatible
- Mute • Hold • Flash
- Desk/wall mount • White only



KX-TS108-W

Single Line Speakerphone

- 16-digit LCD with clock
- Programmable restriction
- 10-number 1-touch speed dialing
- Volume controls for speaker, handset and headset
- Data port • Headset compatible
- Redial • Mute • Pause • Hold • Flash
- Desk or wall mount • White only



KX-TS500-B/W

Single Line Phone

- Handset volume control with mute
- 3-step ringer control (off-lo-hi) • Redial
- Tone/pulse switchable
- Timed flash memory
- Desk or wall mount
- In White or Black



KX-TS550-B/W

Single Line Phone

- Handset volume control with mute
- 3-step ringer control (off-lo-hi)
- Emergency/speed dial button
- Tone/pulse switchable
- Timed flash memory
- Redial
- Desk or wall mount
- In White or Black



KX-TS3282-B/W

2-Line Telephone with Intercom

- Call Waiting Caller ID
- One Intercom Path
- All or Individual Paging
- Flexible Extension Numbers (1-8)
- Expandable to 8 Extensions
- Automatic Line Selection
- 50-Station Caller ID Memory and Phone Book • 3-Line LCD • Headset Jack (On-Hook)
- Handset Volume Control • Redial/Pause/Hold
- Data Port • Wall Mountable • In White or Black



KX-TS620-B/W

Single Line Speakerphone with User Selectable Voice Mail

- Built-in user selectable voicemail with up to 13 minutes recording
- Caller ID and call waiting caller ID
- Handsfree speakerphone
- 3-Line LCD display • Data port
- 2.5mm Headset jack
- Mute/flash/pause/hold
- Tone remote control system
- 2 Way conversation record
- Wall mountable • In White or Black



DESK PHONES



Standard Desk

2500XX-VBA-20M-Colors*

250047-VBA-20M

- Fully modular • Hearing aid compatible • Ringer volume control
- ADA Volume Control Compliant • *Available in black, ivory, & ash

Standard Desk with Flash

250044-VBA-20F

- Fully modular • Hearing aid compatible • Ringer volume control
- ADA Volume Control Compliant • Available in ash only

Standard Desk with Flash and Message Waiting

250044-VBA-27F

- Fully modular • Hearing aid compatible • Ringer volume control
- ADA Volume Control Compliant • Available in ash only

Standard Desk with Message Waiting

250044-VBA-27M

- Fully modular • Hearing aid compatible • Ringer volume • Ash only

WALL PHONES



Standard Wall

2554XX-VBA-20M-Colors

255447-VBA-20M

- Fully Modular • 9' Handset Cord • Single-Gong Ringer
- Ringer Volume Control • Hearing Aid Compatible
- ADA Volume Control Compliant

Standard Wall with Flash

255444-VBA-20F

- Fully Modular • 9' Handset Cord • Single-Gong Ringer
- Ringer Volume Control • Hearing Aid Compatible
- ADA Volume Control Compliant • Available in ash only

Standard Wall with Flash and Message Waiting

255444-VBA-27F

- Fully Modular • 9' Handset Cord • Single-Gong Ringer
- Ringer Volume Control • Hearing Aid Compatible
- ADA Volume Control Compliant • Available in ash only

XX = COLORS 00 = Black 15 = White 44 = Ash/Almond 09 = Ivory 47 = Red

2500 Series desk phones and 2554 Series wall phones are available in the above colors unless otherwise noted in their description.

DIAL-IN-HANSET

615021-VOE-21M Trendline

- Tone/pulse • 3 one-touch
- 10 two-touch
- Mute • Pause
- Flash • Redial
- Visual ringer on handset back
- Electronic ringer
- Desk or wall mount
- Available in frost (21) and black (00)



615000-VOE-21M Trendline

- Tone/pulse • 3 one-touch
- 10 two-touch
- Mute • Pause
- Flash • Redial
- Visual ringer on handset back
- Electronic ringer
- Desk or wall mount
- Available in frost (21) and black (00)



PATRIOT MEMORY SPEAKERPHONE

219300-VOE-27S

- Speakerphone
- Dataport
- Pause
- Redial
- Hold with LED
- Tone or pulse
- Desk or wall
- Hearing aid compatible
- Visual ring indicator
- Headset Compatible
- 20-Number Memory
- Storable Flash and Pause • 2-Year Warranty
- Available in black only



COLLEAGUE SPEAKERPHONE

2203-00-VBA27S Black

2203-21-VBA27S Frost

- Flash (100-300-600mS) switchable
- 90 V Message Waiting Lamp
- Handset Volume Control - ADA Compliant
- Hook Delay (Positive Line Disconnect)
- A-Lead • Data Jack
- Hearing Aid compatible
- Hold with LED Indicator
- Desk/Wall Mount
- 10 One-Touch Programming Memory • Mute with LED Indicator
- Handsfree Speakerphone with LED Indicator • Handset Control Switch
- Last Number Redial



MULTI-FEATURE SINGLE-LINE AND TWO-LINE PHONES



912000TP227M

Single Line Multi-Feature Telephone

- Caller ID with Call Waiting • 99 CID Memory • Trilingual Caller ID
- 3 Line Blue Backlit Display • Voice Message Waiting Indicator/FSK • Mute
- Hold • 10 Speed Dial Locations (two touch) • Flash • Redial
- 2.5mm Headset Jack • Adjustable Stand • Desk/Wall Mountable
- Hearing Aid Compatible • Handset Volume Control • Ringer Loud/Normal
- 10 2-Touch Memory Buttons • 2 Programmable 1 Touch Memory Buttons



912500TP227S

Single Line Multi-Feature Speakerphone

- Caller ID with Call Waiting • 99 CID Memory • Trilingual Caller ID
- 3 Line Blue Backlit Display • Voice Message Waiting Indicator/FSK
- Mute • Hold • Flash • Redial • 20 Speed Dial Locations (one touch)
- Speakerphone • 2.5mm Headset Jack • Adjustable Stand
- Hearing Aid Compatible • One Touch Call Forward • Call Waiting Off Button
- End Call Button • Conference • Hold (PBX) • Clear Message Button
- Speaker Volume Control • Handset Volume Control • Ringer Low/High/Off
- Pause • 3 Programmable 1 Touch Memory Buttons • Desk/Wall Mountable



922500TP227S

Two Line Multi-Feature Speakerphone

- 2 Lines • Caller ID with Call Waiting • 99 CID Memory • Trilingual Caller ID
- 3 Line Blue Backlit Display • Voice Message Waiting Indicator/FSK
- Mute • Hold • Flash • Redial • 20 Speed Dial Locations (one touch)
- Speakerphone • 2.5mm Headset Jack • Adjustable Stand
- Hearing Aid Compatible • One Touch Call Forward • Call Waiting Off Button
- End Call Button • Conference • Hold (PBX) • Clear Message Button
- Speaker Volume Control • Handset Volume Control • Ringer Low/High/Off
- Pause • 3 Programmable 1 Touch Memory Buttons • Desk/Wall Mountable



222000TP227S

Two Line Enhanced Colleague Speakerphone

- 2 Lines • Angle Adjustable 3-Line Backlit Super-Twist LCD Screen
- Both 90 Volt and 24 Volt Message Waiting Lamps
- Headset Jacks (2.5mm & RJ type)
- Caller ID with Call Waiting • 99 Message CID Memory
- Voice Message Indication: FSK, Stutter and 90 Volt
- Speakerphone • Mute with LED • Electronic Hold • Programmable Flash
- Redial • High Profile Ring Indicator • Multi-Step Volume Control
- Data Port • Tone/Pulse Switch • Conference
- Desk/Wall Mountable • In Charcoal Color Only



2210XXTP227E

Enhanced Colleague with Speakerphone

- Single line • Improved Super-Twist LCD Screen: Improved Viewing and Reduced Glare • Ratchet-Type LCD Display for Selectable Viewing Angle
- Both 90 Volt & 24 Volt Message Waiting Lamps • Headset Jacks (2.5mm and RJ type) • Caller ID with Call Waiting • 60 Message CID Memory
- Extra Large 3-line LCD Panel • DTMF Dialing
- Voice Message Indication: FSK, Stutter and 90 Volt • Speakerphone
- Mute with LED • Electronic Hold • 10 Direct and 10 Keypad Memories • Flash
- Redial • High Profile Ring Indicator • Multi-Step Volume Control • Data Port
- DTMF Dialing • Desk/Wall Mountable

XX = Frost (21) or Black (00)

LARGE HOTEL/MOTEL JOB? CALL TODAY FOR QUANTITY PRICING

TOLL FREE – 800-873-5528 • LOCAL – 301-296-9400 • FAX – 301-296-9494

EXTREME RANGE SINGLE LINE CORDLESS

FreeStyl 1

FreeStyl1 FreeStyl 1 System - Single Line Base Station with (1) FreeStyl 1 Handset
FreeStyl1HC FreeStyl 1 Handset Kit - w/battery pack, charging cradle and ac adaptor

Extreme Range Cordless

Offers more coverage than any other consumer rated cordless telephone in North America

2-Way Radio

Multi-functional cordless system offers walkie talkie like functionality which operates independent of the base station. Users can take the FreeStyl handsets with them for a handy and quick alternative way to communicate.

WiFi Compatible

The FreeStyl high power frequency will not interfere with today's wireless networks, unlike your traditional 2.4 or 5.8 Ghz models available in today's market.

Easy Installation

FreeStyl cordless systems can be set up in a matter of minutes for basic Extreme Range coverage.

Expandable Handsets

The FreeStyl system can start out with only (1) handset and expands up to (9) handsets

- Superior Multi Floor Coverage
- More Range than 2.4 or 5.8 Ghz
- Digital Spread Spectrum—Security
- Built in 2-Way Radio between handsets
- Base station dialing w/speakerphone
- 4.5 hours talk time, 70 hours stand-by time
- Works behind any analog port (PBX, VOIP, PSTN, FXS or POTS)
- Wireless full duplex intercom between FreeStyl base & other FreeStyl handsets
- PTT (push to talk) Broadcast PA between FreeStyl base & FreeStyl handsets
- Slim & lightweight handsets designed for residential and office environments
- Penetrates Concrete, Wood and Drywall
- Outperforms all DECT solutions
- Expandable to (9) total handsets
- Built in handset broadcast system
- Handset speakerphone



Coverage:
 Up to 25,000 square feet
 10 acres and
 6 floors of penetration
NO CERTIFICATION REQUIRED

Expansion Handset

Accessories

FreeStyl1BA Battery Pack	FreeStyl1ACB AC Adaptor for Base
FreeStyl1BAE Battery Pack - Extended Talk Time	FreeStyl1ACC AC Adaptor only for Desktop Cradle
FreeStyl1ANTB Antenna Assembly for Base Unit	FreeStyl1CC Desktop Cradle only for Handset (requires FreeStyl 1-ACC)
FreeStyl1HSA1 Antenna Assembly for Handset (optional) (long)	FreeStyl1CH Desktop Charger & AC Adaptor for Handset
FreeStyl1HSA2 Antenna Assembly for Handset (low profile) (short)	FreeStyl1Pouch Handset Pouch (with built in belt clip assembly)

FreeStyl 2

- Scalable: supports up to 9 simultaneous handsets (sold separately)
- High Power/High Sensitivity for extreme wireless range and connectivity
- Speakerphone in handset
- 2-Way Intercom
- Simultaneous broadcast to multiple handsets from any handset
- Operation Frequency: 902~928MHz (option for 902~915MHz & 915~928MHz)
- Up to 400mW Transmit Power / -111dbm Receive Sensitivity
- Phone book: 50 entries
- Soft menu key
- Handset speakerphone
- Broadcast (independent with base)
- Intercom (independent with base)
- Transmit power control
- Adjustable microphone gain
- Message waiting detection (VMWI)
- 4-line LCD display
- Hold • Built-in music on hold
- Rapid charging • Mute
- Wall mountable
- 2.5mm headset jack • Ringer/ vibrator



CALL FOR AVAILABLE ACCESSORIES

EXTREME RANGE SINGLE LINE INDUSTRIAL-GRADE CORDLESS



DuraFon 1X Longest Range Cordless Phone and 2-Way Radio System Works Behind PBX/Key Systems!

- **12 floor in-building penetration**
- **250,000 sq. ft. in a warehouse or retail store**
- **3,000 acres on a farm or ranch** • Digital 2-way radio (totally independent of the base)
- Loud broadcast/page feature (1-1, 1-group or 1-all) independent of base
- Multi-handset capable • Call hold • Call transfer • Vibration mode
- Call Waiting/Caller I.D. • 1-touch, 30-number phone directory access
- 6-hours talk time, 50 hours of stand-by time
- Programmable PBX Function Soft Key
- Add up to 9 additional DURAFON 1X-HC handsets for each base station

- DURAFON 1X** 1 Handset, 1 Base, 1 Li-Ion Battery, 1 Charging Cradle
DURAFON 1X-HC 1 Handset, 1 Li-Ion Battery, 1 Charging Cradle
DURAWALKIE 1X The DuraWalkie 1X is a 2-way radio only handset that works only with the DuraFon 1X system. Includes charger and battery.
DURAFON 1X-BU 1 Base Unit



In order to resell EnGenius Cordless Telephone Systems to your customers (except for the FreeStyl 1 and 2 on the previous page), you must be an Authorized EnGenius Installer. Let Target help you become authorized today and you'll be on your way to offering the Longest Range Cordless and 2-Way Radio System on the market today!

EXPANDABLE 4-LINE PRO LONGEST-RANGE CORDLESS

DuraFon PRO 4-Line System

- **12 Floor in-building penetration**
- **250,000 sq. ft. in a warehouse or retail store**
- **3,000 acres on a farm or ranch** • Multiple Handsets (up to 90)
- Multiple lines (4-ports / lines per base unit)
- Expandable to 8 base units
- Ability to broadcast to handsets via analog port or line as well as from another PRO or DuraWalkie handset directly
- Works behind any analog port of a PBX, phone system or analog phone line
- Durable, Reliable, Ease of Use, Affordable, Superior Sound Quality
- 6 hours talk time, 50 hours stand-by time
- **Will only work with DuraFon PRO, OHC and DuraWalkie handsets**
- Optional external antenna for indoor use in warehouses and manufacturing plant or outdoor use on farms and car lots

System Includes:

- One (1) DuraFon PRO Base Unit • One (1) DuraFon PRO Handset
- One (1) Li-Ion Battery Pack • One (1) AC Charging Cradle • One (1) Belt Clip
- One (1) Optimal Performance Antenna • One (1) Low Profile Antenna

NEW FEATURE: Telephone Calls Can Be Transferred From a PRO Handset to a DuraWalkie Handset



DuraFon PRO-HC

Extra Handset for DuraFon PRO
 Telephone Calls Can Be Transferred From a PRO Handset to a DuraWalkie Handset
Will only work with DuraFon PRO shown above
 Includes: Handset, Battery Pack, Charging Cradle, Belt Clip and 2 Antennas



DuraFon OHC

This new stylish handset works with (and requires) either the 4-line DuraFon PRO, or single-line DuraFon 1X base station shown above

- Range up to: 12 floors (office), or 250,000 sq. ft. (retail)
- Speakerphone in handset • 2.5 mm headset port
- 2-Way handset-to-handset communication, independent of base station • 50 hours stand by time
- Up to 6 hours of talk time • Sleek contemporary design

DuraFon PRO PIB20L Kit

- One (1) DuraFon PRO Base Unit
- Four (4) DuraFon PRO Handset
- Eight (8) Li-Ion Battery Pack
- Four (4) AC Charging Cradle w/ power adaptor • Four (4) Belt Clips
- Four (4) Optimal Performance Antenna
- Four (4) Low Profile Antenna
- Four (4) DuraPouch – handset holster
- One (1) External High Gain Antenna Kit w/66' Low Loss Coax Cable • One (1) Lighting Protection Kit



DURAFON KITS

DuraFon PRO PIA Kit

- One (1) DuraFon PRO Base Unit
- Four (4) DuraFon PRO Handset
- Eight (8) Li-Ion Battery Pack
- Four (4) AC Charging Cradle w/ power adaptor
- Four (4) Belt Clip
- Four (4) Optimal Performance Antenna
- Four (4) Low Profile Antenna
- Four (4) DuraPouch – handset holster



CALL FOR THE FULL LINE OF DURAFON ACCESSORIES

TOLL FREE – 800-873-5528 • LOCAL – 301-296-9400 • FAX – 301-296-9494

DECT 6.0 CORDLESS PHONES

CRL32102 Cordless with User Selectable (On/Off) Voice Mail

- Caller ID/call waiting
- Up to 14 Minutes of Digital Recording Time
- High-contrast backlit LCD and lighted keypad
- Quiet mode • Visual ringing indicator
- Talking digits • DECT 6.0 digital technology
- Conference • 9 number speed dial
- 50 name and number phonebook directory
- Voicemail waiting indicator
- Quick access key for voicemail box
- Last 10 number redial
- Wall-mount bracket included
- Mute • Any key answer



EL52100 Cordless with User Selectable (On/Off) Voice Mail

- DECT 6.0 Digital Technology
- Handset Speakerphone
- Lighted Keypad on Handset
- Large Lighted Display on Handset
- 100 Name/Number Phonebook Directory
- Table/Wall Mountable
- Caller ID/Call Waiting Capability
- 50 Name/Number Caller ID History
- Up to 14 Minutes of Digital Recording Time
- Variable Message Playback Speed
- Message Retrieval from Handset • Voice Prompts



CRL32202 Two Handset Bundle Cordless with User Selectable (On/Off) Voice Mail

- Caller ID/call waiting
- Up to 14 Minutes of Digital Recording Time
- High-contrast backlit LCD and lighted keypad
- Quiet mode • Visual ringing indicator
- Talking digits • DECT 6.0
- Conference • 9 number speed dial
- 50 name/number phonebook directory
- Voicemail waiting indicator
- Quick access key for voicemail box
- Last 10 number redial • Wall-mount bracket included
- Mute • Any key answer



TL92273 Two Handset Bundle Connect to Cell™ Cordless with User Selectable (On/Off) Voice Mail

- Make and receive calls from your cell phone through these handsets • Mobile notifications
- Download up to 6,000 cell phonebook entries to the cordless handsets
- Mobile notifications
- Virtual multi-line operation
- Ringtone share - set your cordless phone to play your iPhone® (iOS 4.1 or later) ringtone
- Swap between cellular and home line calls
- Distinctive ringer tones for home and cellular lines
- Up to 14 Minutes of Digital Recording Time for Answering device



CL83201 Two Handset Bundle Cordless with User Selectable (On/Off) Voice Mail

- Dial in base with large tilt display • HD audio • Call Waiting Caller ID • Caller ID Announce
- Conference Between an Outside Line and up to 4 Handsets • Use up to 4 Handsets on a Call
- **Expands Up to 12 Handsets**
- Digital TAD with Up to 14 Minutes Capacity with Time/Day Stamp • Handset Speakerphone
- Table/Wall Mountable • Voice Prompts • Memo Recording
- Push-To-Talk for instant and easy communication between handsets
- 10 Speed Dial and 10 Intercom Number Locations • Last 10 Number Redial
- Base Speakerphone • Equalizer For Customized Audio - Choose from 4 preset profiles
- Any Key Answer • Auto Off • Chain Dialing • Flash • Dial In Base • Voice Prompts
- Remote Access • Call Screening/Intercept • Message Retrieval from Handset • Memo Recording



CL80111 Expansion Handset Add up to 10 additional handsets for a total of 12

TL86109 Bluetooth Compatible 2-Line Bundle with User Selectable Voice Mail

- DECT 6.0 Technology • 2-Line Operation • Caller ID / Call Waiting
- **Expands Up to 12 Handsets**
- Digital Answering System with Up to 14 Minutes Capacity with Time/Day Stamp
- Hearing Aid Compatible • Wall Mountable • Dual Speakerphone (Base & Handset)
- Compatible w/ Bluetooth Enabled Cell Phones & Wireless Headsets
- Dual LCD Display (Base & Handset) • Dual Keypad (Base & Handset) • Handset Locator
- Dial Display • On-Hook Dialing • 50 Station Name / Number Caller ID Memory
- 50 Station Phone Directory / Dialer • Conferencing • New Call Indicator • Message Waiting Indicator
- Adjustable Ringer Volume Control • Handset to Base / Handset Intercom • Call Transfer
- 20 Station Redial • Date / Time Display • Line In Use Indicator • Low Battery / Out of Range Indicator
- 2.5mm Headset Jack • Trilingual Menu Support (English / Spanish / French)



TL86009 Expansion Handset Add up to 10 additional handsets for a total of 12

DECT 6.0 CORDLESS PHONES



KX-TGD210N

- Large, 1.6" White Backlit Handset Display
- Illuminated Handset Keypad
- Call Block • Intelligent Eco Mode
- Handset Speakerphone
- Up to 3-Way Conference Capability
- Call Waiting Caller ID
- Handset Locator • Intercom
- Wall Mountable • Belt Clip
- **Expandable to 6 Handsets**

KX-TGDA20 — Additional Handset



KX-TGD212N 2-Handset Bundle

- Large, 1.6" Amber Backlit Handset Display
- Illuminated Handset Keypad
- Call Block • Intelligent Eco Mode
- Handset Speakerphone
- Up to 3-Way Conference Capability
- Call Waiting Caller ID
- Handset Locator • Intercom
- Wall Mountable • Belt Clip • Ringer ID
- **Expandable to 6 Handsets**

KX-TGDA20 — Additional Handset



KX-TGC220S

- Large, 1.6" Amber Backlit Handset Display
- Illuminated Handset Keypad • Call Block
- Intelligent Eco Mode
- Handset Speakerphone
- Ringer ID
- Up to 3-Way Conference Capability
- Call Waiting Caller ID • Handset Locator
- All-Digital Answerer – User Selectable On/Off
- **Expandable to 6 Handsets**

KX-TGCA20 — Additional Handset



KX-TGH262B



2-Handset Link-to-Cell Bluetooth Cordless

- Large, 1.8" Color LCD Handset Display
- Link up to 2 Cell Phones
- Talking Text Sender Alert
- All-Digital Answerer – User Selectable On/Off
- Enhanced Noise Reduction
- Key Detector Compatible
- Power Back-Up Operation • Silent Mode
- Talking Caller ID • Intelligent Eco Mode
- **Expandable to 6 Handsets**

KX-TGHA20B — Additional Handset



KX-TGH263B



3-Handset Link-to-Cell Bluetooth Cordless

- Large, 1.8" Color LCD Handset Display
- Link up to 2 Cell Phones
- Talking Text Sender Alert
- All-Digital Answerer – User Selectable On/Off
- Enhanced Noise Reduction
- Key Detector Compatible
- Power Back-Up Operation • Silent Mode
- Talking Caller ID • Intelligent Eco Mode
- **Expandable to 6 Handsets**

KX-TGHA20B — Additional Handset



KX-PRD262B



Dock Style Telephone with Smartphone Integration Capability

- Link up to 2 Cell phones
- Smart Networking
- Stream content directly from Smartphone to enjoy rich, full sound
- Charges your Smartphone via the USB Connector
- Link up to 2 Cell phones
- **Expandable to 6 Handsets**

KX-PRLA20 — Additional Handset



KX-TG9381T 2-Line System



- Phonebook Transfer from Cell Phone via Bluetooth • Bluetooth Headset Capability
- Silent Mode • Ringer ID
- 40-Minute All-Digital Answering System – User Selectable On/Off • White Backlit LCD
- Intercom (Handset-Handset/ Handset-Base)
- Light-up Indicator with Ringer/Message Alert
- Call Waiting Caller ID
- Handset Locator
- **Expandable to 6 Handsets**

KX-TGA939T — Additional Handset



KX-TG9541B 2-Line



Link-to-Cell Bluetooth Cordless 1 Handset

- Link up to 4 Cell Phones
- USB port to charge cellphone
- 3-Line Backlit LCD Display w/ Adjustable Tilt
- All-Digital Answerer – User Selectable On/Off
- Dual Speakerphone (Base & Handset)
- 3-Way Conferencing
- Wall Mountable/Mount Included
- **Expandable to 6 Handsets**

KX-TGA950 — Additional Handset



KX-TG9542B 2-Line



Link-to-Cell Bluetooth Cordless 2 Handset Bundle

- Link up to 4 Cell Phones
- USB port to charge cellphone
- 3-Line Backlit LCD Display w/ Adjustable Tilt
- All-Digital Answerer – User Selectable On/Off
- Dual Speakerphone (Base & Handset)
- 3-Way Conferencing
- Wall Mountable/Mount Included
- **Expandable to 6 Handsets**

KX-TGA950 — Additional Handset

TARGET HAS THE BEST SELECTION, SERVICE AND PRICES

TOLL FREE – 800-873-5528 • LOCAL – 301-296-9400 • FAX – 301-296-9494

HA-40 P/N 01933.000

Handset Amplifier

- Clarity® Power™ technology
- Increases incoming sounds up to 40 decibels
- Adjustable incoming volume control
- Adjustable tone control (600-2400Hz)
- Boost button allows for even more amplification and eliminates background noise and feedback by muting the mic in the handset
- Connects easily between handset and telephone base
- Compact and portable • Battery included • White only



Inline Amplifiers

W-10-BP-XX

Battery Powered

- (2 "AA")
- 00 - Black
- 44 - Ash

W-10-XX

AC Powered (Adapter Included)

- (00 - Black, 44 - Ash, 09-Ivory)
- Both units work with virtually any phone
- Up to 19dB amplification
- Rotary volume control



NC1-XX Noise Censor for G-Type Handset

The Walker NC-1 Noise canceling censor for handsets offer a unique noise canceling system integrated in directional microphone housing. Reduces side tones. Makes calls clearer. For all noisy environments. Can be used with amplified handsets. Converts existing handset into a noise cancelling handset.

For 500 or G-Style Handsets

- Directional microphone for use in noisy areas
- User installable – replaces the standard carbon transmitter

XX = 00-Black, 44-Ash



W6-500M-44

G-Type Amplified Handset In Ash

- Ideal for use in noisy surroundings, poor line quality and for the hearing impaired
- Improves listening volume up to 20dB
- Analog Only
- ADA Compliant (hearing aid compatible)
- Works on most phones
- G-Style
- Line powered, no batteries required



W6-B-KM-00

K-Type Amplified Handset In Black

- Ideal for use in noisy surroundings, poor line quality and for the hearing impaired
- Improves listening volume up to 20dB
- Analog Only
- ADA Compliant (hearing aid compatible)
- Works on most phones
- K-Style
- Uses 2 "AA" batteries (not included)



W6-K-M-EM-80-RP-00

K-Type Amplified Handset In Black

- For use with telephones that have a reverse polarity handset
- Ideal for use in noisy surroundings, poor line quality and for the hearing impaired
- Improves listening volume up to 26dB
- Analog Only
- ADA Compliant (hearing aid compatible)
- Works on most phones
- K-Style
- Line powered, no batteries required



W6-K-M-NC-4-00

K-Type Amplified Handset with Noise-Canceling Mic In Black

- Ideal for use in noisy surroundings, poor line quality and for the hearing impaired
- Improves listening volume up to 20dB
- Analog Only
- ADA Compliant (hearing aid compatible)
- Works on most phones
- K-Style
- Line powered, no batteries required



W6-K-M-00

K-Type Amplified Handset In Black

- Ideal for use in noisy surroundings, poor line quality and for the hearing impaired
- Improves listening volume up to 20dB
- Analog Only
- ADA Compliant (hearing aid compatible)
- Works on most phones
- K-Style
- Line powered, no batteries required



W6-K-M-EM-80-00

K-Type Amplified Handset In Black

- Ideal for use in noisy surroundings, poor line quality and for the hearing impaired
- Improves listening volume up to 20dB
- Analog Only
- ADA Compliant (hearing aid compatible)
- Works on most phones
- K-Style
- Line powered, no batteries required



W6-K-UNI-K-00

K-Type Amplified Handset In Black

- Ideal for use in noisy surroundings, poor line quality and for the hearing impaired
- Improves listening volume up to 20dB
- Analog Only
- ADA Compliant (hearing aid compatible)
- Works on most phones
- K-Style
- AC powered (adapter included)



D702™ 53702.000 DECT 6.0 Amplified/Low Vision Cordless

- Clarity Power™ technology • **Amplifies incoming sounds up to 30 db** • Adjustable tone control
- Extra loud and clear handset speakerphone for hands-free conversations
- Ten (10) speed dial buttons to store important numbers
- One-hundred (100) name and number phonebook with ten (10) memory buttons • Twenty (20) Last Number Redial memory
- Easy to hold lightweight and ergonomic handset • Belt Clip for hands-free mobility
- Hear-It-Ring Clarity ringer has ten (10) loud and clear melodies plus six (6) levels of volume.
- Both the large keypad and CID display light up as a super bright visual ringer
- Direct connection to assistive listening devices or headset (2.5mm)
- Expandable up to five (5) handsets

D702HS 52702.000 Extra Handset



XLC2™ 59522.000 DECT 6.0 Amplified Non-Expandable Cordless with Talking Caller ID

- Digital Clarity Power™ **amplifies incoming sound up to 50db**
- Three (3) tone settings for a customized listening experience • Amplifies outgoing speech up to 15 decibels
- DECT 6.0 technology for interference-free communication • Loud and clear speakerphone for hands-free conversations
- Talking Caller ID announces the phone number of the incoming caller
- Illuminated talking dial pad with large buttons that speak the number that is dialed
- ClarityLogic™ built-in customer support system makes setup quick and easy • 12 speed dial buttons
- Flashing Visual Ringer • Belt clip for hands-free mobility • Can be wall mounted to avoid using counter or desk space
- Extra loud ringer (95dB) with adjustable tones • Hearing aid compatible and TIA-1083 compliant
- Direct connection to assistive listening devices or headset (2.5mm and 3.5mm)
- Dual Power Battery Backup lets you make calls when the power is out • Backup batteries included



XLC3.4™ 59234.000 DECT 6.0 Amplified Expandable Cordless with Talking Caller ID

- Digital Clarity Power™ **amplifies incoming sound up to 50db**
- Four (4) tone settings for a customized listening experience • Amplifies outgoing speech up to 15 decibels for others to hear you better
- DECT 6.0 technology for interference-free communication • Loud and clear speakerphone for hands-free conversations
- High contrast Caller ID screen with large font and Talking Caller ID • Hearing aid compatible and TIA-1083 compliant
- Illuminated talking dial pad with large buttons that speak the number that is pushed
- Belt clip for hands-free mobility • Can be wall mounted to avoid using counter or desk space
- Extra loud ringer (95dB) with adjustable tones • Super bright visual ringer with voicemail indicator
- Hearing aid compatible and TIA-1083 compliant • Direct connection to assistive listening devices or headset (2.5mm or 3.5mm)
- Dual Power Battery Backup lets you make calls when the power is out • Backup batteries included
- Expandable up to four (4) extra handsets

XLC3.5HS 59523.000 Extra Handset



Alto Plus Amplified Corded Phone 54505.001

Stay connected with friends and family with the Alto™ from Clarity®. This corded phone amplifies caller's voices up to 53dB, making it great for individuals with severe hearing loss. Customer support is simplified with ClarityLogic™ - a Clarity® representative will be able to remotely evaluate the phone, and even adjust the settings for the user!

- **Up to 53dB amplification** • Tone and volume control • Loud 100dB ringer with visual indicator
- Speakerphone • Outgoing speech amplification of 15dB • 4" backlit screen with large font
- Talking Caller ID/talking keypad with Clarity Voice Assist • 3 one-touch memory buttons
- 2.5mm headset jack • 3.5mm neckloop jack • Jack for optional bed shaker (not included)
- TIA4953 and TIA1083 compliant



E814 Amplified Corded Phone with Digital Answering Machine 53730.000

- **Amplifies incoming sound up to 40 decibels**
- Four (4) tone settings to customize your listening experience
- Amplified digital answering machine making it easier to listen to messages
- Large high contrast CID display • Extra loud and clear speakerphone for hands-free conversations
- Large keypad with high contrast numbers • Five (5) speed dial buttons to store important numbers
- Ten (10) loud ringer melodies with six (6) levels of volume
- CID display lights up as super bright visual ringer
- Expandable up to four D703HS cordless handsets (handset shown below with E814CC)

D703HS Additional Handset 52703.000



E814CC Amplified Corded/Cordless Combo with Answering Machine 53727.000

- **Amplifies incoming sound up to 40 decibels**
- Four (4) tone settings to customize your listening experience
- Amplified digital answering machine making it easier to listen to messages
- Large high contrast CID display • Five (5) speed dial buttons to store important numbers
- Extra loud and clear speakerphone for hands-free conversations
- Large keypad with high contrast numbers
- Ten (10) loud ringer melodies with six (6) levels of volume
- CID display lights up as super bright visual ringer
- Expandable up to four D703HS cordless handsets (3 more can be added to this bundle)

D703HS Additional Handset 52703.000



TARGET HAS THE BEST SELECTION, SERVICE AND PRICES

TOLL FREE – 800-873-5528 • LOCAL – 301-296-9400 • FAX – 301-296-9494

MESSAGE-ON-HOLD

EASY AS 1-2-3



MESSAGE-ON-HOLD PLAYER with CUSTOM ANNOUNCEMENTS

- 1) Install Player (basic Message On Hold Pre-Installed)
- 2) Hand Voucher to Your Customer
- 3) Customer Completes Process and Installs Custom Message On Hold (Up to 200 Words!)



MOH Player Features:

- Fully Digital player, 8MB internal storage up to 1 hour play time
- 64Mb memory using USB stick (supplied) or SD Card up to 16 Gb (not supplied)
- Complete with installed 'on hold' message ready to go
- Built in Speaker/Monitor, Play Vol +/- keys • 8 ohm or 600 ohm output
- Select, easily load multiple tracks and change between tracks played
- Compatible with any phone system • Includes power supply and all leads

MOH Player

MOH Player with Generic MOH Only

MOH Player + 1

MOH Player + 1 Custom Announcement

MOH Player + 4

MOH Player + 4 Custom Announcements

MOH Player Add Announcement

MOH Additional Announcement for MOH Player



SIMPLE TO CREATE CUSTOM ANNOUNCEMENTS

- Go to www.mohplayer.com and click Register
- Enter Serial Number
- Choose Voice Actor – over 150 available
- Select Music from 300 royalty free tunes
- Enter Script with Script Wizard
- Wait for Voice Actor to record (Voice Actor gets SMS message to inform them of 'new job')
- Download & Install on MOH Player!

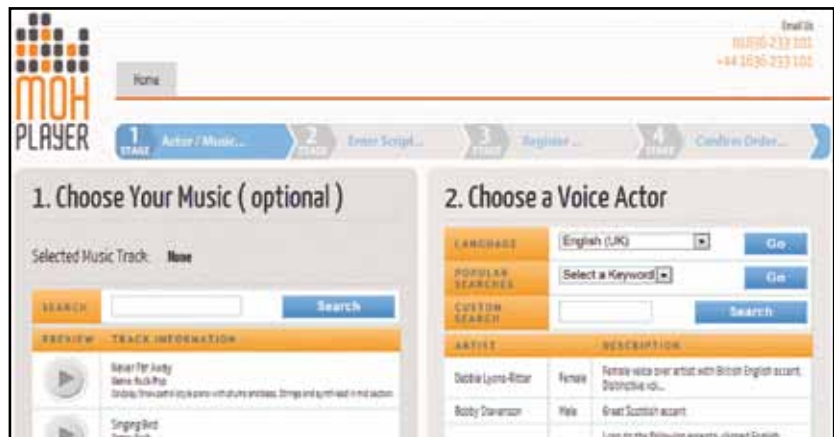


100% Dealer/Reseller Branding:

- Your own 100% branded Announcement web site available (Contact your Target Sales Rep for details)
- Set your own prices and margins
- All Customer Communications under YOUR BRAND
- Recurring revenue from Client Re-Orders



	Announcement Voucher Up To 200 Words 300 Royalty Free Tunes	
	Serial ABCD-ABCD-ABCD-ABCD	
New Users: • Visit www.MOHPlayer.com • Click "Register Your Player" • Enter Serial and choose Music & Actor and enter Script	Registered Users: • Log in with username & password • Click "Order New Announcement" and enter Serial Number above	



TRY OUR MOH DEMO RIGHT NOW!

Go to www.MOHPlayer.com

Click 'Try Our Demo'

Choose Music, Choose Actor & Enter Script

MP3 MUSIC/MESSAGE-ON-HOLD PLAYERS

OHP 6000

MP3 Digital On-Hold Audio System for PBX and Key Systems

- MP3 digital player integrated analog phone line adapter module
- Pre-Loaded with nearly 3 hrs. of Fully Licensed Music & Messages
- Free On-Hold Production Personalization - provided automatically when product is registered
- 128MB of On-Board memory for nearly 3 hrs. of audio (upgradable to over 140 hours with 2GB SD flash card)
- Backlit 6-line LCD Control Panel • Built-in Monitoring Speaker
- MessageStudio 5.0 On-Hold Audio Creator Software
- Flash Memory - Retains Music/Message Content Even During Power Loss • Auto-Start After a Power Outage • Wall Mountable



OHP 8000 USB

Flash Drive MP3 Digital On-Hold Audio System for PBX and Key Systems

- Digital music message player
- Plays audio directly from any USB Flash Drive for continuous playback
- 128MB USB Flash Drive Included (preloaded with music and "thanks for holding" messages)
- Rugged Anodized Aluminum Enclosure
- Autostart after power loss
- Pre-Loaded with nearly 3 hours of fully-licensed music & messages
- Built-in monitor speaker • Wall mountable
- MessageStudio Pro custom production software
- Free custom message personalization with product registration
- Includes installation cables



BUSINESS MUSIC and COMMERCIAL WIRELESS AUDIO SOLUTIONS

Commercial sound systems have always been a tangled web of wiring...Eos changed all that. The all new plug & play Eos streaming music player and complete line of Eos Pro Series wireless speakers, receivers & transmitters will forever change the way that commercial sound systems are deployed. Eos Pro Series wireless products feature a proprietary digital wireless platform with rock solid performance and incredible wireless range.

Get into the business of business music! Earn a 20% recurring revenue stream

Now you can offer your customers a professional grade business music solution that offers an affordable, legal way to play great sounding commercial-free music all over their business. The Eos/Cloudstream system is the perfect music solution for retail stores, bars, cafes', restaurants, spas, salons, doctor, dentist, chiropractic and other professional offices. Cloudstream features 50+ music stations in all the most popular music formats, from Jazz to Country & everything in between! Cloudstream music service (\$29.95 per/mo) provides installers an evergreen revenue stream of 20% paid monthly on every installation! **Call for complete details today.**



cloudstream music™

EOSP-500

Streaming Internet Dual-Zone Business Music Player

- Streaming internet music player for business
- Ethernet connection
- Preconfigured for Cloudstream business music service (\$29.95 per/mo), 50+ music channels fully licensed to be played in public areas • Line outputs to distribution amp
- Supports wireless music playback to Eos wireless speakers & receivers with optional integrated wireless audio transmitter card (EOSP-510) • Built-in flash drive player (Zone 2) can be used for music-on-hold or second music channel • Backlit LCD Display
- SD Card slot for music backup - activates in event of internet failure • 10-station presets
- IR remote control • Dual-zone volume controls • Switchable mono & stereo outputs



shown with optional EOSP-510 wireless card installed

EOSP-510 Wireless Audio Transmitter Card for Streaming Internet Dual-Zone Business Music System

- Simple plug-in card allows music to be transmitted from the streaming media player to Eos wireless speakers & receivers • Streams two zones of audio wirelessly • Transmits mono or stereo
- Proprietary, interference-free all digital 2.4GHz wireless protocol • Up to 300' wireless range
- High-gain 1/2 wavelength antennas • Supports up to 12 Eos wireless speakers/receivers
- Supports wireless paging to wireless speakers and receivers on Zone 1



EOSP-610

Dual Zone Wireless Audio Transmitter/Receiver

- Works with any music source
- Mode Select Switch (transmit or receive)
- Zone Select Switch (Zone 1 or Zone 2)
- High gain 1/2 wavelength antennas
- Line Level Zone 1 & Zone 2 stereo or mono input/outputs (output to a distribution amp or MOH)
- Zone 2 impedance selector switch (8 or 600 output for MOH)
- Up to 300' wireless range • High-gain 1/2 wavelength antennas
- Wall mountable • Rugged extruded aluminum housing
- Compatible with all Eos Pro Series wireless systems shown above
- Supports up to 12 Eos wireless speakers/receivers in transmit mode



EOSP-622

Wireless Speakers

- Integrated wireless receiver
- Class D 30W digital amp
- Integrated speakers (4" woofer/1" tweeter)
- Ported bass reflex cabinet
- Zone 1/Zone 2 select switch
- Right/Left channel switch
- IR remote with volume and tone controls
- No mounting required when connected to wall outlet (shown)
- Security mounting bracket
- Up to 300' wireless range
- High-gain 1/2 wavelength antennas
- Optional wall mounting kit (EOSP-05) • Incredible sound quality



DESIGNING A VALCOM SYSTEM IS AS EASY AS 1-2-3!

1. Select A Page Control

One-Way Page Controls

V-2000A 1 One-Way, 1 Zone, Page Control

- Background Music Input With Volume Control • Music Automatically Mutes During A Page
- VOX Page Port Access (No Relay Required) • Loop Start Trunk Port For Page Access
- Built-In Power • Page Volume Control • UL/CSA

V-2001A 1 One-Way, 1 Zone, Enhanced Page Control

- Telephone System CO Port Access • Page Port Access • Page Override
- Background Music Input And Volume Control
- Page Outputs With Or Without Music • Internal Tone Generator With Volume Control
- Battery Feed Switch For Loop Start CO Port Access • RJ 11 Modular Plug For Page Access
- AC Powered • Battery Backup Input • Switch Selection Of Tones/Output • Built-in Power
- Will Work With Single Line Telephone For Access • UL/CSA/CE

V-2003A 1 One-Way, 3 Zone, Enhanced Page Control

- Interfaces With Telephone System Via A Loop Start/Ground Start C.O. Line Position
- Page Override Input • Background Music And Tones Are Programmable On A Per Zone Basis
- Built In All Call With Volume Control • Background Music Input With Volume Control
- May Be Accessed From A Dedicated Single Line Telephone Set • Accepts Pulse Or DTMF Dialing
- Integral Battery Backup Input • Standard AC Receptacle Powered
- Built-In Power • Built-In Tone Generator (Single/Warble) With Volume Control • Dual Line Voltage Ready • Page Port With Contact Closure Access • UL/CSA/CE

V-2003AHF Talkback, 3 Zone, Enhanced Page Control

- Same as V-2003A except with Talkback capability

V-2006A One-Way, 6 Zone Page Control with Built-in Power

- Provides 6 Zones Of 1 Way Paging • Interfaces With Telephone System Via A Loop Start/Ground Start C.O. Line Position • Page Override Input
- Programmable Features Per Zone: Background Music, Tones, Talkback • Multiple Units Can Be Interconnected For A Common All Call
- Page Port With Contact Closure Access • Three Programmable Zone Groups • May Be Accessed From A Dedicated SLT • Standard 66 Blocks Used For Connections
- Built In All Call With Volume Control • DTMF Operated Auxiliary Contacts Available For Controlling Electric Door Locks • Dial Tone • Accepts Pulse Or DTMF Dialing
- Integral Battery Backup Input • Standard AC Receptacle Powered • Built-In Power • Built-In Tone Generator (Single/Warble) With Volume Control • Dual Line Voltage Ready

V-2006AHF Talkback, 6 Zone Page Control with Built-in Power • Same as V-2006A except with Talkback capability



Dual-Path Page Controls

V-2924A 24 Station Expandable Talkback Intercom System

V-2925A 24 Station Expansion Unit

- 24 Stations Of Handsfree Talkback • Easy Expansion Up To 96 Stations By Adding V-2925 (24 Station Increments) • Handsfree Talkback & One-Way Communications
- Riot Mode (Blocks Low Priority Stations) • All Call • Group Call • Background Music Input • Tone Input • Emergency Override All Call • SMDR Printer Port
- "Meet Me/Follow Me" • Door Unlock • Caller ID • Class of Service/Zone • UL/CSA/CE

V-2926A Option Board for V-2924A

- Time Sync Output • Custom Page Groups • Enhanced Caller ID • Flexible Architectural Numbering Plan • Interface To The PC Programming Tool
- Store User Data To EEPROM Real Time Clock For SMDR Printer • Auto Detect For Com, Port Or Modem • Auto Adjust For Daylight Savings Time
- Evacuation Tone To Specified Groups • Time Tones To Specified Groups Read • Software/Firmware Revision Numbers

V-2928 Option Board for V-2924A with Time Event Scheduler

- Option Card for V-2924A w/ Time Event Scheduler has all the features of the V-2926A Plus Time Event Scheduling Software

V-CIO Clock Relay Card

- The V-CIO Clock Relay Card provides four 10 amp contact relays for driving clocks. It is designed for use with the V-2927 Control Card

V-2927 Clock Control Card

- The V-2927 provides clock control for synch wire correction, two-wire digital correction and wireless correction when used with additional equipment

Multi-Path Page Controls

V-PW24 24 zones, Expandable to 72 zones, wall mount

V-PW48 48 zones, Expandable to 72 zones, wall mount

V-PR72 72 zones, Expandable to 192 zones, rack mount

V-PR24 24 zones, Expandable to 192 zones, rack mount

V-PR48 48 zones, Expandable to 192 zones, rack mount

V-PR96 96 zones, Expandable to 192 zones, rack mount

- One way voice paging from any telephone station to a zone, group of zones, or all zones. • One way voice paging to a user-defined temporary (on the fly) group zone.
- Emergency paging from selected telephone stations to a zone, group of zones, or all zones. • One way priority override voice paging to all zones from a microphone.
- Two way (talkback) communication between a telephone and a speaker. • Door control and entry control.
- Distribution of discreet signal tones to a zone, group of zones or all zones. Tones may be used for night ring, time signals, alert signals, or other communication (programmable).
- Distribution of program material to a zone, group of zones or all zones • Pre-announce and privacy tones (programmable)
- Program sources may include music, speech or signals from radio, tape, CD, cable, or digital audio messaging units • ADA – Area of Rescue Inputs
- Class of Service, day and night (programmable). • Two, three or four-digit architectural numbering (programmable). • Synthesized Emergency Voice Announce.
- Emergency Restricted Access Mode. • Serial output for system activity reporting (SMDR). • On-site or remote programming and diagnostics from a Windows® based PC.

Station Level FXS

V-9940 Expandable Station Page Adapter

- Background Music Input With Mute • Requires -24 VDC, 200 mA • Provides Dry Contact Closure Output • 8 ohm And 600 ohm Outputs • U.L. Listed
- Multiple Units Can Be Installed In Tandem With Common All Call, Or Can Be Connected To Valcom Multi-Zone, One-Way or Talkback Page Control/Interfaces For Zone Paging And All Call

V-9970 One-Way, 1 Zone Digital Page Adapter

- Provides Audio Output, Contact Closure Output, Background Music Input/Output • Power Supply Required • UL, CSA

DESIGNING A VALCOM SYSTEM IS AS EASY AS 1-2-3!

2. Select Your Speakers and Horns

Ceiling Speakers

ONE-WAY

V-1010C 4-Inch One-Way Ceiling Speaker

- Exceptional Voice & Music Reproduction
- Contains Its Own Built-In Amplifier
- White Epoxy Finish
- Screwdriver Adjustable Volume Control in Front

V-1020C 8-Inch One-Way Ceiling Speaker

- Exceptional Voice & Music Reproduction • Contains Its Own Built-In Amplifier
- White Epoxy Finish • Screwdriver Adjustable Volume Control in Front



TALKBACK

V-1060A 8-Inch Talkback Ceiling Speaker

- Exceptional Voice & Music Reproduction • White Epoxy Finish
- Amplifier and Power Supply Required • Optional Bridges and Backboxes Available

P-TEC

V-9022A-2 One-Way, Amplified 2' x 2' Lay-In Ceiling Speaker with Backbox

- Easy Lay-in Mounting
- Replaces 2' x 2' Ceiling Tile
- Speaker Wired With Plenum Rated Cable
- Backbox Meets Or Exceeds A.S.T.M. E84 Flame And Smoke Test - 3 Hour Burn UL 181
- Durable White Acrylic Baked Enamel Finish
- 2 Audio Inputs • Sold in Packages of 2 Only



TRACK STYLE SPEAKERS

V-1013B

One Way, 1-Watt in Black/Black

V-1013WWW

One Way, 1-Watt in White/White

V-1014B

One Way, 5-Watt in Black/Black

- Built In Amplifier
- Weather Resistant Metal Enclosure
- Angled Mounting Bracket Included
- Utilizes Standard Telcom/Datacom Wiring CAT 3/5/6
- Built In Volume Control
- Background Music, Tone And Voice Reproduction



PENDANT SPEAKERS

V-1015B

1-Way, 1-Watt in Black/Black

V-1015W

1-Way, 1-Watt in White/White

V-1019B

Talkback, in Black/Black

V-1093-BK Additional 6-Foot Chain

- Built In Amplifier (except Talkback)
- Weather Resistant Metal Enclosure
- 6 Foot Hanging Chain Included
- Utilizes Standard Telcom/Datacom Wiring CAT 3/5/6
- Built In Volume Control
- Background Music, Tone And Voice Reproduction

Wall Speakers

V-1052C 8-Inch One-Way Wall Speaker

- Gray w/ black cloth grille
- Built-in amplifier • Paintable metal housing
- Easy Installation • Screw terminal connection
- Utilizes Standard CAT 3/5/6 Cable
- Excellent voice and music reproduction

V-1071 8-Inch Talkback Wall Speaker

- As above except talkback and requires amp and power supply



Wall Speakers

V-1054 8-Inch One-Way Corner Speaker

- Gray w/ black cloth grille
- Built-in amplifier • Paintable metal housing
- Easy Installation • Screw terminal connection
- Utilizes Standard CAT 3/5/6 Cable
- Excellent voice and music reproduction



V-1055 8-Inch Corner Talkback Speaker

- Sleek, modern design • 8" speaker • Gray w/ black cloth grille • Easy Installation
- Paintable metal housing • Screw terminal connection • Uses Standard CAT 3/5/6 Cable
- Excellent voice and music reproduction • Requires amp and power supply

SQUARE

V-1016 8-Inch Square Grille One-Way Ceiling Speaker

- Utilizes Standard CAT 3, 5, OR 6 Cable
- Exceptional Voice & Music Reproduction
- Externally Accessible Volume Control
- Wide Sound Dispersion
- Electrically & Acoustically Matched Parts
- Available in Black or White



V-1061 8-Inch Square Grille Talkback Ceiling Speaker

- As Above But Talkback • Amplifier and Power Supply Required

V-1022C One-Way Woodgrain Wall Speaker

- Utilizes Standard Telcom/Datacom Wiring CAT 3/5/6
- Easy Mounting With Detachable Bracket
- Light Brown Open-Weave Grille
- Built-in 1 Watt Amplifier With Volume Control



Horn Speakers

V-1030C One-Way, 5 Watt Amplified Horn

- Utilizes Standard Telcom/Datacom Wiring CAT 3/5/6
- Weather-Resistant For Indoor/Outdoor Use
- Omni-Lock Mounting System
- Built-in Volume Control • Built-in Amplifier
- Includes I-Beam Clamp • Available in Beige, Gray and White



V-1036C One-Way, 15 Watt Amplified Horn

- As above with 15-Watt Amplifier

V-1030M One-Way, 5 Watt Amplified Marine Horn, White

- High Impact White, Non-Yellowing Plastic Housing
- Weather Resistant Enclosure
- Omni-Lock Mounting System
- Built-in Volume Control For Individual Adjustment
- Built-in Amplifier Increases Reliability, Flexibility
- Includes I-Beam Clamp
- Utilizes Standard Telcom/Datacom Wiring CAT 3/5/6



V-1036M One-Way, 15 Watt Amplified Marine Horn, White

- As above with larger built-in amplifier

Flex Horn

V-1080 One-Way, 3 W Amplified FlexHorn

- Utilizes Standard Telcom/Datacom Wiring CAT 3/5/6
- Water-Proof For Wash Down Areas
- Corrosion Resistant
- Built-in Volume Control And Amplifier
- Recess or Surface Mount
- V-9804 Bracket Included
- Available in Beige, Gray and White



V-1090 Talkback FlexHorn

- As above except talkback and requires amp and power supply

DESIGNING A VALCOM SYSTEM IS AS EASY AS 1-2-3!

3. Select Your Power Supply and Accessories

-24VDC 120Hz

VP-324 300 mA, -24 Vdc Linear Power Supply

- 300 mA, -24 Vdc Linear
- Unfiltered • Receptacle Mount
- Power Supply plugs directly into a standard electrical grounded receptacle



VP-624B 600 mA, -24 Vdc Linear Power Supply

- 600 mA, -24 Vdc Linear
- Unfiltered • Receptacle Mount
- Power Supply plugs directly into a standard electrical grounded receptacle



VP-1124 1 Amp, -24 Vdc Switching Power Supply

- High-Efficiency (90%)
- Wall or Shelf Mount
- Much Lighter (40%)
- Available for 100-230 Volt 50-60 Hz
- UL, CSA, CE Listed
- Less Power Consumption
- Much Smaller (20%)
- Brownout Protection



VP-2124 2 Amp, -24 Vdc Switching Power Supply

- High-Efficiency (90%)
- Wall or Shelf Mount
- Much Lighter (40%)
- Available for 100-230 Volt 50-60 Hz
- UL, CSA, CE Listed
- Less Power Consumption
- Much Smaller (20%)
- Brownout Protection



VP-4124 4 Amp, -24 Vdc Switching Power Supply

- Can Be Strapped For 2A -48 Vdc
- High-Efficiency (90%)
- Wall or Shelf Mount
- Much Lighter (40%)
- Available for 100-230 Volt 50-60 Hz
- UL, CSA, CE Listed
- Less Power Consumption
- Much Smaller (20%)
- Brownout Protection



VP-6124 6 Amp, -24 Vdc Switching Power Supply

- High-Efficiency (90%)
- Wall or Shelf Mount
- Much Lighter (40%)
- Available for 100-230 Volt 50-60 Hz
- UL, CSA, CE Listed
- Less Power Consumption
- Much Smaller (20%)
- Brownout Protection



VP-12124 12 Amp, -24 Vdc Switching Power Supply, Wall Mount

- High-Efficiency (90%)
- Much Lighter (40%)
- Available for 100-230 Volt 50-60 Hz
- UL, CSA, CE Listed
- Less Power Consumption
- Much Smaller (20%)
- Brownout Protection



IP Only Power Supply

VIP-324 300 mA Power Supply

- Local Power Option for VIP-800 Series
- Receptacle Mounted
- Unfiltered
- UL, CSA



-12VDC 120Hz

VP-412A 400 mA, -12Vdc, Power Supply

- Receptacle Mount For Space Saving
- Power Supply For V-2952 FM Tuner And V-9970 1 Zone Page Adapter



Back-Up Power Supplies

VPB-260 400 mA, -12Vdc, Power Supply

- For Valcom Page Controls With Battery Back-Up Input (V-2001A, V-2003A, V-2006A, V-2901A, V-2904, V-2920, V-2924, V-2925) & Compatible with some Telephone Systems
- Contains Long Life Maintenance-Free Gel Cell Batteries
- 12 and 24 Volts DC, Fused At 3 Amps
- Fuse-Protected AC Input, Current Limiting On Output
- Battery Test Switch And Power On Led
- Connects Directly To Battery Back-Up Molex Connector On Compatible Equipment



VPB-6124UPS Battery Charger

Battery Back-Up Adapter interfaces the VP-6124 to any 24 volt rechargeable battery system. Maintains the battery charge until the power fails. When a power failure occurs, the VP-6124-UPS provides a uniform transition to battery back-up of the VP-6124

- Wall Mount
- Cables Included For Required Connection To VP-6124 Power Supply And VBB-1424 (Battery Box)



VBB-1424 Battery Box

Battery Box with Batteries provides 14 AH/-24V gel cell storage (For use with VP-6124/VP-6124-UPS.)

Accessories

V-2971 Call In Switch, Stainless

V-2991-W Call In Switch, White

- Fits a Single-Gang Electrical Box
- No External Power Source Required
- Black "Call" Button for Normal Call



V-1092 Volume Control, Stainless

V-2992-W Volume Control, White

- Control Volume Of Up To 150 One-Way Speakers
- Stainless Steel Hardware (Includes Mounting Box)



V-1094-A Page Expansion, Stainless

V-2994-A Page Expansion, White

- Add V-1094A's or V-2994's For Virtually Endless Expansion (150 1-Way Speakers Per Unit)
- A Master Volume Control For Entire Systems Or Groups Of Remote Speakers
- Pre-Amplified Low Level Audio To Remote Sites • Isolates Page Port From Speaker Lines
- Specifications: Input Impedance: 600 ohm; Power Requirements: -24 Vdc, 45 mA

VMT-1 Input Matching Transformer

- Hi-Z, 10k-ohm primary impedance
- Matches high-to-low impedance or low-to-high impedance
- Lo-Z, 600-ohm secondary impedance, balanced with center tap



V-9992 Digital Sound Level Meter

- 32 to 130 dB/3 Ranges • A/C Weighting
- Resolution 0.1 dB • EC 651 Type II



AMPLIFIERS



- PBM30** 30W Amplifier
- Two MIC inputs (terminal strip)
 - RMS Power: 30W
 - 4/8/16 Ohms & 70/25V outputs
 - Auto summing stereo AUX input
 - Music-on-hold output with separate level control (600 Ω line & 1 Watt 8Ω)
 - 600 Ω tel. line input w/ level control
 - Manual muting contacts
 - Accessory AC outlet



- PVL15A** 15W PA Amplifier
PVL30A 30W PA Amplifier
- Frequency Response: 30Hz – 20kHz
 - Outputs: 4 and 8 Ohms, 70/25V
 - AC Voltage: 120VAC 50/60Hz
 - Microphone Inputs: 2 (One 1/4" and one 1/4" or XLR)
 - Auxiliary Inputs: 1 (One 1/4")
 - Perfect for small installations such as classrooms, retail shops, convenience store



- PMM60A** 60W Amplifier/Mixer
PMM120A 120W Amplifier/Mixer
- AC 120V, 50/60Hz • 50-15kHz
 - 6 MIC Inputs/4 XLR connections (1.0mV/600 Ohms)
 - 3 Aux Inputs (200mV/50k Ohms)
 - 1 Telephone (100mV/600 Ohms)
 - 4/8/16 Ohms & 25/70V Line Outputs
 - Music-on-Hold Feature
 - Treble/Bass Control
 - Master Volume Control



- PBM120A** 120W Amplifier/Mixer
PBM120AT with Tuner
PBM120AU with USB/Tuner/CD
- RMS Power: 120W Max.
 - 3 XLR Microphone inputs with selectable phantom power
 - Telephone paging input • MOH feature
 - 5 zoned speaker outputs (70 or 25V)
 - Front bass and treble controls
 - Master digital volume control
 - RS232 input for integration with popular control systems

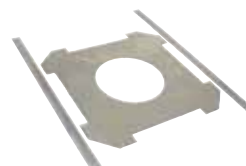
SPEAKERS



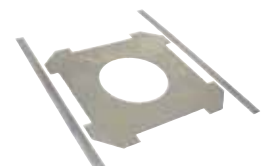
- SP5MAT**
5.25" 25/70V Speaker with Backbox
- Frequency response: 57Hz - 20kHz
 - 5.25" Woofer
 - 1" Mylar dome tweeter
 - 8Ω, 25/70V
 - 10 ounce magnet
 - 30WRMS power handling capacity
 - ABS plastic back can



- SP6MAT**
6.5" 25/70V Speaker with Backbox
- Frequency response: 34Hz - 20kHz
 - 6.5" Woofer
 - 1" Mylar dome tweeter
 - 8Ω, 25/70V
 - 11.6 ounce magnet
 - 40WRMS power handling capacity
 - ABS plastic back can



- BRC6F**
In-Ceiling Bracket for 6" Speaker
- 8-3/8" Cutout Speaker Support Bracket (Sold in Pairs)
 - Includes 16-3/4" square center support and two attachable 2" rails.
 - For use with Speco part #s: SP6ECS SP5MAT



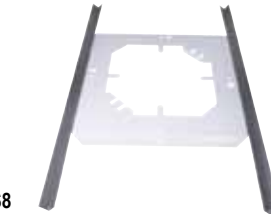
- BRC8F**
In-Ceiling Bracket for 6" Speaker
- 9-7/8" Cutout Speaker Support Bracket (Sold in Pairs)
 - Includes 16-3/4" square center support and two attachable 2" rails.
 - For use with Speco part #s: SP8ECS SP6MAT



- G86TCG**
8" Speaker / Grille / Transformer
- With volume control
 - 8" speaker combination with transformer & mounted grille
 - 5 oz. magnet
 - 5W dual 70/25V transformer (with taps of 5W, 2.5W, 1W, 0.5W, 0.25W & 8 Ohms)



- G86TG**
8" Speaker / Grille / Transformer
- 8" speaker combination with transformer & mounted grille
 - 5 oz. magnet
 - 5W dual 70/25V transformer (with taps of 5W, 2.5W, 1W, 0.5W, 0.25W & 8 Ohms)



- TS8**
Ceiling Support for 8" Speaker
- T-Bar bridge for ceiling support of 8" speakers with grilles, top hats, etc.
 - Heavy gauge steel construction
 - Dimensions: 23.63" (W) x 14" (H)
 - Sold individually
 - For Speco G86TG & G86TCG at left



- SPCT8T**
8" Indoor Ceiling Tile Speaker
- 8" Polypropylene woofer
 - 3/4" Mylar dome tweeter • 50Hz-20kHz
 - 30 Watts RMS/ 60 Watts Max
 - 8 ohms • Selector Switch. 70/25 Volt
 - Transformer Settings 20, 10, 5, 2.5, 1.25 and 8 ohms
 - 2" Drop-ceiling crossbar rail included



- SPC15T**
8" Weatherproof PA Speaker
- 15 watt RMS/30 watt maximum power rating
 - Frequency response of 250 to 15 kHz
 - 8Ω, 25/70V
 - 70 volt line wattage taps for 15, 10, 5, 3, and 1 watts
 - Adjustable mounting bracket is included



- SPC30RT**
11" x 8" Weatherproof PA Speaker with Transformer
- 15 watt RMS/30 watt maximum power rating
 - Frequency response of 250 to 16 kHz
 - 8Ω, 25/70V
 - 70 volt line wattage taps for 15, 10, 5, 3, and 1 watts
 - Adjustable mounting bracket is included



- SPC40RT**
6.5" x 11" Weatherproof ABS PA Speaker Horn
- 15 watt RMS/30 watt maximum power rating
 - Frequency response of 250 to 16 kHz
 - 8Ω, 25/70V
 - 70 volt line wattage taps for 15, 10, 5, 3, and 1 watts
 - Adjustable mounting bracket is included



PA-24 Multi-Line Loud Ringer / Paging Amplifier

- Two watts of paging power for up to three 8-Ω speakers
- Paging from an unused trunk port or paging port
- Four loud ringing sounds
- Provides loud ringing or night bell, from 1-6 lines for warehouses, yards, etc.
- Output for controlling a 12 volt relay from 1-6 ringing lines • Page alert tone

VIKING Document-On-Demand #485



PA-15 15-Watt Paging Amplifier

- 15 Watts of power
- Drive up to (15) 8-ohm speakers
- 600 Ohm output
- Select: FXO (loop start), FXS (ring trip) or paging port (VOX relay) interface mode
- Independent volume controls for Paging, Ringing Tones and BGM

VIKING Document-On-Demand #486



PA-30 30-Watt Paging Amplifier

- Drive up to 30 8-Ohm or up to 50 70V or 25V speakers
- 600-Ohm output to cascade multiple units
- Separate inputs and volume controls for paging, auxiliary source, loud ringing and background music
- Night transfer switch input
- Page alert tone • Power supply included

VIKING Document-On-Demand #489



PA-60 60-Watt Paging Amplifier

- 60 Watts of total paging power
- Two separate amplified zones of paging
- Drive up to (60) 8 ohm speakers
- Drive up to (100) 70V or 25V speakers
- Separate input gain controls for each channel
- Voltage, current, thermal and short circuit protection
- High efficiency allows high power in a small package

VIKING Document-On-Demand #493



SA-25 Paging Control Unit for Remote Control Self Amplified Speakers

- Includes (1) SA-IR Infrared Remote Control
- Drive up to 25 self amplified speakers
- Separate volume controls for Auxiliary Input, Paging, Ringing Tones and Background Music
- Choose from up to 4 loud ringing sounds
- Expandable with SA-X12 adapter

VIKING Document-On-Demand #520



SA-1S Remote Control Paging Speaker

- 8 inch paging speaker • Built-in 1.5 watt power amplifier
- Infrared remote control detector • Digital volume control
- Users set their own volume levels
- Allows users to totally mute the speaker
- Audible feedback to set proper volume

VIKING Document-On-Demand #525

SA-1H Remote Control Paging Horn

- 5 inch paging horn • All other features as above

VIKING Document-On-Demand #526

SA-IR Remote Control • Controls SA-1S/SA-1H

VIKING Document-On-Demand #527



SA-X12 Self Amplified Paging Expander/Adapter

- 600 ohm line level paging systems
- 4, 8, or 16 ohm paging systems
- 25 volt and 70 volt paging systems
- Expand a Viking SA-25 paging system
- Powers up to 12 Viking self amplified speakers
- Expand existing paging systems
- Adapts to any paging system

VIKING Document-On-Demand #529



FBI-1A Digital Anti-Feedback Paging Interface

- High quality (80K/40K) digital storage
- High output - 2V RMS into 600 ohms
- 16 or 32 second record time (DIP switch selectable)
- Record/Playback LED indicator
- Compatible with Paging or Trunk ports
- Compatible with virtually all paging and telephone systems

VIKING Document-On-Demand #465



HF-3W Handsfree Talkback Amp & Speaker

- Selectable "Push-to-Talk" feature for noisy environments
- 25-50 foot talk-back range • 28V DC talk battery
- 3 watts of paging power
- Background music input
- May be integrated into existing paging system
- (1) 25AE paging horn included
- Optional second speaker may be added

VIKING Document-On-Demand #470



PI-1A Paging Integration

- Integrate your PA system with nearly any phone system
- Cut out background music during paging
- Floating 600-Ohm output
- Selectable 22V DC talk battery for use with unused line input/trunk ports
- Paging port interface • Adjustable ring pitch
- Ringing analog line input for night bell
- Contact closure input for night bell

VIKING Document-On-Demand #491



M2W Paging Amp & Speaker

- Adjustable volume control
- Powers up to three 8 ohm speakers
- Screw terminal connections
- Amplify key phone paging and ringing
- Add speakers to fully loaded paging systems
- Power supply included
- One weather resistant 25AE paging horn included

VIKING Document-On-Demand #480



K-600F Night Bell Over Paging Adapter

- Eliminates the installation of multiple bells, relays and power supplies, whenever night bells, loud ringing or emergency tones are required.
- Provides tone over existing paging amplifiers
- Auxiliary relay contacts provided
- Connects directly to ringing a analog PABX/KSU stations
- Floating 600 ohm output
- Ring Voltage: 40V AC minimum, 15Hz - 70Hz

VIKING Document-On-Demand #476



FXI-1 Paging Interface

- Integrate your paging system with virtually any POTS, Centrex, Digital or IP phone system
- Suppress background music during paging
- Provides contact closure to activate paging system
- Add pre-announce tone to your paging system
- 30V DC talk battery for interfacing with FXO port
- Floating 600 ohm paging output w/volume control

VIKING Document-On-Demand #494



NS-1 Night Switch

- The NS-1 can be used with Viking products that have a "Night Switch" input or any product that requires an external switch closure
- Compact size, mounts anywhere
- Rugged switch with flat actuator
- Foam tape for quick mounting
- Quick connectors for easy wiring

VIKING Document-On-Demand #540



ZPI-4 4-Zone Paging Controller

- Multiple zone paging for Centrex systems
- Multiple zone paging for phone systems with paging ports, unused analog station ports or unused trunk inputs
- Expand up to 8 zones using 2 units
- Night bell warble with adjustable level from contact closure or ringing line
- Includes power supply

VIKING Document-On-Demand #499



SR-1 Loud Ringing Device

- Loud ringing from an analog line
- Loud ringing from a dry contact closure
- Choose one of four ringing sounds
- Adjustable volume control
- Provides a door chime tone for either a door bell, door open sensor or "Push for Assistance" button
- Test button for setting volume • Power supply included

VIKING Document-On-Demand 477



25AE 8-Ohm Horn

- Nominal Power: 12 watts • Weatherproof
- Adjustable base for easy mounting
- Works with all of Viking's 8Ω paging products
- Add additional speakers and coverage area to existing paging systems such as Viking's PA-2A, PA-15, PA-30, PA-60, HF-3W and M2W

300AE As above with Nominal Power of 30 watts
VIKING Document-On-Demand #498



30AE 8-Ohm Ceiling Speaker

- Nominal Power: 6 watts • Attractive white grill
- Mounting hardware included • Large permanent magnet
- Works with all of Viking's 8-Ω paging products
- Add additional speakers and coverage area to existing paging systems such as Viking's PA-2A, PA-15, PA-30, PA-60, HF-3W and M2W

35AE As above with Volume Control
40AE As above with Nominal Power of 15 watts
VIKING Document-On-Demand #498



SA-TBA Tile Bridge

- Fits standard 8 inch ceiling speakers
- Bridges both 2 ft x 2 ft and 2 ft x 4 ft ceiling tiles
- Threaded mounting holes for easy installation
- 24 gauge galvanized steel

VIKING Document-On-Demand 534



DNA-510 Digital Mass Notification Announcer

Provides up to 2 minutes of digitally recorded voice emergency instructions & alert tones over existing paging system.

- Non-volatile memory (no batteries required)
- Up to 2 minutes of total message record time
- Record up to 5 different emergency messages
- Ten different emergency alert tones
- Auto interrupts current page or background music

VIKING Document-On-Demand #492



CTG-1 Clock Controlled Tone Generator Over Paging

- Accurate 24 hour digital time clock displays hours and minutes
- User programmable 24 hour, 128 event timer
- Programmable day of week on/off feature Selectable single, double, or triple alert sound
- Three contact closure controlled sounds

VIKING Document-On-Demand #460

SV-5W Wall Plate Volume Control

The SV-5W is a single speaker volume control for a single-gang electrical box



VIKING Document-On-Demand 488



CTG-2 Clock Controlled Tone/Message Generator

- Up to 14 Schedules and up to 1,000 Events
- 6 minutes of CD quality WAV file record time
- Programmable Atomic Clock synchronization
- USB PC programming software included
- Non-volatile memory with 4 hour clock back up
- Programmable Auxiliary relay contacts (DPDT)
- Built-in 2 watt mono audio amplifier
- Clock SYNC terminals to control CL Series Clocks

VIKING Document-On-Demand #463

SLP-1 Single Line Paging Adapter

- Page from single line home/business phones
- Built-in 2-watt paging amplifier
- Places caller on hold while paging
- "Meet me intercom" capability
- Provides doorbell chime & loud ring over page
- Auto background music mute during page

VIKING Document-On-Demand #478

SLP-4 Single Line Paging Adapter

- As above but provides inputs for 4 lighted doorbell switches with 8 different chime tones

VIKING Document-On-Demand #479



MTG-10 Multi-Tone Generator

- Ten available tones, organized into 2 groups of 5 tones
- Siren • Interrupted 784Hz Tone
- Door Chime (Ding-Dong) • Warble (Electronic Ring)
- Double Gong • Evacuation Whoop
- Telephone Recording Disclosure Tone (500ms beep, every 15 seconds) • Double Buzz
- Double Chime • Quadruple Chime
- Contact initiated

VIKING Document-On-Demand #482

FREE PAGING SYSTEM DESIGN SERVICE

Bogen's Application Design Service was developed to assist with the design of paging systems for any and every project encountered. It's fast, comprehensive, and FREE. So let Bogen design it for you!

The Application Design Service provides:

- Speaker Placement Design
- Complete Bill of Material – This includes product description, model number, and quantity. Bogen will then fax it to Target to fill your order from their huge inventory and you're ready to go!
- Red-Lined Blueprints (blueprints must be supplied; AutoCAD [To AutoCAD 2005, .DWG file formats] blueprints accepted)

Here's how the Application Design Service works:

Provide information about the project using the Design Request Form available at:

<http://www.bogen.com/support/designservice/>

No application is too big, small, simple, or complex for Bogen.

Contact Bogen at **1-800-999-2809** for more information or to send in a project for Bogen to work on right now.

It couldn't be easier and best of all it's FREE!



TELEPHONE PAGING AMPLIFIERS

Bogen's TPU-Series of amplifiers defines state-of-the-art technology in the telephone paging industry. Whether paging from a microphone or a telephone, the TPU-Series provides signal-activated, automatic muting of back-ground music during a page, and gradual return of music following a page. The TPU-Series is designed for convenience as well as efficiency.

Features:

- 15, 35, 60, 100 and 250 watt models specially-designed for telephone paging systems
- 3 inputs on TPU250 and TPU-B models: 1 TEL, 1 MIC (Lo-Z), 1 music (Hi-Z)
- 2 inputs on TPU15A: 1 TEL, 1 AUX (Hi-Z)
- 600-ohm balanced TEL input for direct connection to page ports and adapters
- TEL input has Automatic Level Control (ALC) for constant page announcement level
- Separate MIC input for a low-impedance push-to-talk microphone (TPU-B models only)
- Music input – mutable by external contact closure (TPU-B models only) or activity on TEL input • Muted music gently fades back after page announcements
- Adjustable music mute level allows music to be "ducked" below page announcements (TPU-B only)
- Aphex[®] Aural Exciter circuitry improves voice intelligibility and crispness (TPU-B models only)
- Separate volume controls for tone, paging, background music, and night ringer
- Built-in night ringer can be activated from 90V ring signal (TPU-B models only) or external contact closure
- 25V and 70V constant voltage outputs, balanced and unbalanced; also 8-ohm on TPU15A
- Wall-mount design provides minimum protrusion from backboard (TPU250 can also be rack-mounted)
- Easily accessible, recessed front-panel controls (TPU-B models only) for setting volume, muting, music, etc.
- Thermal and electronic overload protection (TPU-B models only), resettable circuit breaker (except TPU250), slow blo fuse on TPU250
- RCA jacks provided to allow amplifier bridging to double the number of amplifier inputs and outputs (TPU-B models only); (a TPU250 can only be bridged with one other TPU250)



TPU-35B, TPU-60B, TPU-100B, TPU-250



TPU-15A

Bogen Telephone Paging Amps

TPU15A	15 Watts
TPU35B	35 Watts
TPU60B	60 Watts
TPU100B	100 Watts
TPU250	250 Watts

CC-SERIES COMPACT PAGING AMPS

Because smaller applications deserve an amplifier that can offer feature options, Bogen's new CC-Series Amplifiers now provide those choices. With 40 watts of power, each of 4 models provide a unique feature set.

Common Features to All CC-Series Amplifiers

- 40 Watts • For 70V/25V and 4/8-Ohm Systems • Audio Activated Priority Levels • Individual Phantom Power for MIC Inputs • REC Output
- Peak and Signal Indicators • Bass and Treble Controls • External 24V DC Power Supply Input
- **RPK93** optional 2U rack mount adapter available for single and side-by-side configurations



CC4021
2 Inputs on Model CC4021:
1 balanced MIC/Line;
1 unbalanced AUX



CC4041
4 Inputs on Model CC4041:
3 balanced MIC/Line;
1 unbalanced AUX



CC4052
5 Inputs on Model CC4052:
3 balanced MIC/Line;
1 unbalanced AUX, 1 TEL



CC4052m
5 Inputs on Model CC4052:
3 balanced MIC/Line;
1 unbalanced AUX, 1 TEL and
Media Player – SD & USB Stick

CLASSIC SERIES PA AMPLIFIERS



Classic Series

- 4 inputs (C35/60/100 models):
1 MIC (Lo-Z), 1 AUX (Hi-Z), 1 TEL, plus 1 selectable MIC or AUX
- 3 inputs (all C10/C20 models):
1 MIC (Lo-Z), 1 TEL, plus 1 selectable MIC or AUX
- 4-ohm, 8-ohm (not on C100), 16-ohm, 25V, & 70V outputs

The Bogen Classic Series Models C35, C60, and C100 are public address mixer amplifiers that provide output screw terminals for 4-ohm (direct) and 8-ohm (C35 & C60 models only), 16-ohm, 25V and 70V (transformer-coupled) speaker systems. Output jacks let you connect to a tape recorder or an additional booster amplifier, or feed a 600-ohm telephone line when an accessory transformer (Model WMT1A) is used.

C10 – 10 Watts **C20** – 20 Watts
C35 – 35 Watts **C60** – 60 Watts **C100** – 100 Watts

GOLD SEAL SERIES AMPLIFIERS



Gold Seal Series Amplifiers

- 4 dedicated MIC inputs • 1 selectable MIC/TEL input
- 1 selectable MIC/AUX input
- 1 dedicated AUX input
- 8-ohm, 25V, 25VCT, and 70V transformer coupled outputs
- 4-ohm direct coupled output
- Rack mountable – 2RU package
- Dual-function, 10-band graphic EQ
- True loudness contour function
- Switchable phantom power suppl
- Remote master volume control
- Pre-amp Out/Power amp In
- Tape output connection and MORE!

Model	Output
GS35	35 Watts
GS60	60 Watts
GS100	100 Watts
GS150	150 Watts
GS250	250 Watts
GSRVC	Remote Volume Control
GSRPK	Rack Mount

VECTOR PRE-AMP/MIXER and INTEGRATED AMPLIFIER

VMIX Pre-Amp/Mixer

- 8 module input bays, accepts up to 2 signal-processing output modules or up to 8 input modules
- Four priority levels
- Rack mountable w/ kit (sold separately)
- 11-segment LED output level meter monitors the output level of the mixer with Peak Hold switch

Vector Amplifiers

- 35W, 60W, & 250W models; each with a large power reserve
- 8 module input bays, accepts up to 2 signal-processing output modules or up to 8 input modules
- Four priority levels
- 4-ohm, 8-ohm, 25V, & 70V outputs
- Rack mountable w/ kit (sold separately)

Model **Output**
V35 35 Watts
V60 60 Watts
V250 250 Watts

Input Modules

- Mono Auxiliary (MAX1R)
- Stereo Auxiliary (SAX1R)
- Tone Generator (TNG1S)
- Bridging (BRG1R)
- Transformer Based-Auxiliary (TBL1S)
- Telephone (TEL1S)
- Dual-Balanced (BAL1S)
- Module Adapter (MA3)

Output Modules

- Ambient Noise Sensor (ANS1R)
- Compressor Limiter (CMP1R)
- Parametric Equalizer (PEQ1R)
- Relay/Input/Output (RIO1S)



Bogen's Power Vector modular amplifiers offer a wide range of power levels from which to choose. They are designed to work with both high- (70/25V) and low- (4/8-ohm) impedance speaker systems.

TARGET HAS PAGING PRODUCTS TO FIT EVERY APPLICATION

TOLL FREE – 800-873-5528 • LOCAL – 301-296-9400 • FAX – 301-296-9494

PAGING HORNS & SPEAKERS



KFLDS30T

Wide Dispersion Paging Horn

- High intelligibility
- Weatherproof design
- Swivel base
- 70V/25V only
- 30-watts
- 170° projection with a rotatable horn flare
- Re-entrant type horn



BDT30A

Bi-Directional Horn

- Twin re-entrant horns for bi-directional projection
- Maximum speaker power capacity of 30W
- Tap settings for 70V: 30, 15, 7.5, 3.7, 1.8 watts; for 25V: 15, 7.5, 3.7, 1.8 watts
- Variable tap impedance selector switch
- Tilt & swivel base for easy aiming
- All metal construction with enamel finish
- Weatherproof design



Metal Box

Surface Speaker

- Rugged all-steel, painted enclosure
- Full-range 8" cone speaker
- Compatible with 70V/25V amplifier systems
- 4-watt maximum output power
- 4, 2, 1, 1/2, 1/4, and 1/8 W tap settings
- Mounting hardware included
- MB8TSL** Wall Mount Only
- MB8TSQ** Wall or Ceiling Mount



BP12DSP and BP15DSP Powered Loudspeakers

- Neodymium LF drivers: 12" on BP12DSP, 15" on BP15DSP • DSP processing
- 1-3/4" Voice coil compression driver
- 350-watt Bi-amp configuration: Low 300W RMS (Class D amplifier), High 50W RMS (Class AB amplifier)
- Combo XLR / 1/4" TRS MIC/LINE Input
- LF EQ Presets
- Signal/Clip and Power indicator LED's



S4 and S5 Speakers

- 4-1/2" Low-Frequency Driver (S4) - 8Ω B or W
- 5-1/4" Low-Frequency Driver (S5) - 8Ω B or W
- For 70V and 8-Ω systems (S4T and S5T)
- NEAR Patented MLS Ferrofluid Suspension, and NEAR MDT Metal Alloy Cone
- 1" High-Frequency Titanium Drivers
- Compact swivel mount bracket included



FG-15B/W

Foreground Speaker

- 8-ohm or 70V inputs
- 15 watts RMS
- Great for music
- Black or white plastic
- U-mounting bracket included

SPT5A Paging Horn

- 7.5-watt paging speaker with transformer
- Variable impedance
- Selector – 25V or 70V



SPT15A Paging Horn

- 15-watts continuous
- Variable impedance
- Waterproof
- Selector – 25V or 70V
- High intelligibility reentrant horn



SPT30A Paging Horn

- 30-watts continuous
- Variable impedance
- Waterproof
- Selector – 25V or 70V
- High intelligibility reentrant horn



ST-H15-B Paging Horn

- 122 dba @ 1 meter
- 15-watts
- Weatherproof
- Power selector switch



ST-H30 Paging Horn

- 122 dba @ 1 meter
- 30-watts
- Weatherproof
- Power selector switch



WBS8T725

Surface Speaker

WBS8T725V

Surface Speaker with Volume Control

- 4W capacity
- 8" cone speaker for excellent audio quality
- 6 power taps available (4W, 2W, 1W, 1/2W, 1/4W, 1/8W)
- Simulated walnut finish
- Available with volume control ("V" versions)
- Pre-assembled for faster installation
- Works with both 70V and 25V amplifier outputs
- Mounting hardware included

CEILING SPEAKERS

SEC4T

- 4-watt capacity
- 4" Wide range speaker
- 4, 2, 1, 1/2, 1/4, 1/8 Watt power taps
- Bright White Enamel over Steel Grille
- Spring-loaded clamps for easy, secure install
- For 25V and 70V systems



SM1EZ

- 1-Watt Single Tap
- SM4T**
- 4-Watt Multi Tap
- Built-in volume control
- 9.5" diameter • 3" height
- Lightweight and durable plastic shell with a paintable off-white finish • 25V & 70V systems



S86T725PG8W

- 8-inch speaker
- 6-ounce magnet
- Round, off white aluminum grille

S810T725PG8W

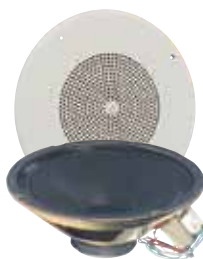
- 8-inch speaker
- 10-ounce magnet
- Round, off white aluminum grille

S810T725PG8WVK

- 8-inch speaker • 10-ounce magnet
- Round, off white aluminum grille
- Volume control knob

S810T725PG8WVR

- 8-inch speaker • 10-ounce magnet
- Round, off white aluminum grille
- Recessed volume



Also available in bright white. To order change the "W" in the part number to "U".

OPS1B (Black)
OPS1W (White)
Orbit Pendant Speakers

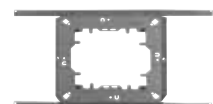
- Specially designed to provide full range audio in open space environments
- Easy to use cable suspension system includes three suspension cables with attached forged eyebolts
- 140-degree wide-dispersion coaxial driver for broad even coverage
- Stable, high definition metal-alloy woofer cone
- For 16-ohm, 70V, & 100V systems
- Attractive, contemporary, sturdy steel grille
- Accessory 10-foot long cable kit for use as main drop cable or safety cable (Model CK10 sold separately)



- HFCS1 Hi-Fi Ceiling Speaker (White)**
- HFCS1B Hi-Fi Ceiling Speaker (Black)**
- HFCSLP (Low Profile Version in B & W)**
- Installs into a variety of ceiling environments including suspended & hard surface ceilings
- Large heavy-gauge plated steel back can for deep bass response
- Computer-matched dual venting system for full bass output
- Wide dispersion coaxial driver provides broad, even coverage
- Good off-axis response with smooth contouring
- For 16-ohm, 70V, & 100V systems



- AT-10A**
- 10-watt attenuator
- AT-35A**
- 35-watt attenuator



TB-8 • Tile bridge



TBCR • Tile bridge

SMTB

- Tile bridge for SM1EZ/SM4T



RE-84
• "Top Hat"



MR-8
• Steel plaster ring

MPS2 Mini Pendant Speakers

- Wide-dispersion 4-1/2" woofer and 3/4" tweeter
- Superior sound in a small, compact enclosure
- For 70V and low-impedance systems
- Computer-matched venting systems
- Selectable power taps via rear-mounted control; 32, 16, 8, 4, 2, 1 watts@ 70V, plus 16-ohm setting
- White or Black finish



MICROPHONES

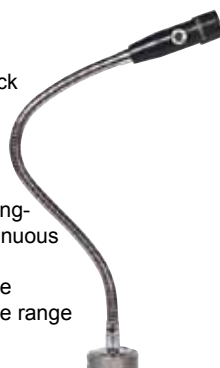
HDO100
Handheld
Public
Address
Microphone

- Omni-directional pickup pattern
- Low sensitivity to handling noise and stage vibrations
- Lockable, silent on/off reed switch
- 500-ohm impedance
- Frequency response range of 70 Hz - 15 kHz
- Sensitivity of -72dB +/- 3dB
- Rubberized black finish
- Includes mic clip



MGN19
Gooseneck
Microphone

- Industrial Gooseneck Microphone
- Omni-directional pickup pattern
- Rugged, reliable design for quality long-term use under strenuous handling conditions
- 400-ohm impedance
- Frequency response range of 50 Hz - 12 kHz, w/ 2 kHz boost
- Sensitivity of -76 dB +/- 3dB
- Push-to-talk switch on MIC housing



MBS1000A
Desk
Microphone

- Cardioid pickup pattern
- Locking mechanism with push-to-talk bar for long announcements
- Push-to-talk or lift-to-talk operation
- Impedance: Hi-Z, 50k ohms; Lo-Z, 500 ohms
- Frequency response range of 45 Hz - 15 kHz
- Sensitivity- Hi-Z: -52 dB +/- 3dB; Lo-Z: -72 dB +/- 3dB
- Rubberized black finish



TARGET HAS PAGING PRODUCTS TO FIT EVERY APPLICATION

TOLL FREE – 800-873-5528 • LOCAL – 301-296-9400 • FAX – 301-296-9494

ZONE CONTROLLERS • RECEIVERS • POWER SUPPLIES

BOMDMU Messaging and Call Stacking System

Bogen's BOMDMU is a comprehensive system that combines page stacking, feedback elimination, pre-recorded messaging, and background music control in a single device.

- 3-channel page stacker & feedback eliminator • Priority input • Station or Dry Loop/Loop Start operation • DTMF support for zoning
- 99 pre-recorded messages in non-volatile FLASH memory • Message triggering via start input or host telephone system workstation
- Industrial construction • Background music support • Rack mount chassis



ZPM-3 3-Zone Paging Controller

- 3 Zone paging plus All-Call
- 3 Field-programmable paging zone groups (1-3 zones in each)
- One-way and two-way paging (talk back operation requires TBA15 Talk Back amplifier)
- Direct connection to page ports (requires contact closures), loop-start and ground start trunks
- Connection to an analog station line (station port) possible when used with a suitable telephone access module, e.g., Bogen Model TAMB2
- 100W total power handling capacity • Background music input
- Works with self-amplified or central-amplified paging systems
- 24V power supply required; Bogen Model PRSLSI recommended



TAMB2PS Access Module

- Interfaces a telephone system with a paging system to allow paging announcements to be made through any telephone
- Updated version of the venerable TAMB, functionally the same
- Loop start, ground start, & station port (90V ring up) compatibility
- Bi-directional for two-way systems
- Rack-mount or wall-mount
- Background music input with volume control
- Power supply included



RECEIVER & 4-ZONE MUSIC/PAGING SYSTEM



DRZ35 Receiver and 4-Zone Music and Paging System

- 35W amplifier for 4-ohm, 25V, or 70V speaker systems
- Built-in AM/FM tuner, PLL-synthesized tuning for drift-free operation
- 20 total presets (10 AM & 10 FM)
- Vox-activated MIC override • 3 inputs: 1 MIC, 1 AUX, 1 LINE
- Master volume, bass and treble controls, 5-segment output meter
- Four speaker zone switches allow paging in up to four different areas, any combination

UNIVERSAL AUDIO PROCESSOR



CORE 8X8

- 8 analog inputs/outputs • Configuration via PC/Laptop
- Programmable, scalable front panel knobs for DSP functions
- Third-party control via RS-232 or IP commands
- Full DSP drag-and-drop component library • Stack up to 12 units
- Up to 53 minutes of audio can be stored inside the box and output 2 separate messages simultaneously to independent zones; messages can be activated using TTL inputs or via the built-in Scheduler • 16 built-in TTL inputs & 8 logic outputs

PCM2000 Zone Controller

The Bogen PCM-2000 introduces a convenient new concept to telephone zone paging and control – modular integration.

PCMCPU	Central Processor
PCMZPM	3 Zone Module
PCMTIM	Telephone Interface
PCMTBM	Talkback Module
PCMPS-2	Power Supply

- 1 to 99 paging zones and up to 32 programmable paging zone groups
- Emergency All-Zone Override Paging input
- 250W power handling capacity (separate amplifier required)
- Operates with 70V and self-amplified (24V) paging systems
- Select zones or groups for background music, night ringer, code calling, tones, & talkback
- Drives up to 25 self-amplified speakers in low-power mode
- Works with systems that are central-, self-amplified or mixed • All-call function can be disabled
- Wall mountable (brackets included) • Easily programmed via phone



PCMSYS3 3-Zone PCM System

The PCMSYS3 is a pre-assembled and tested 3-zone PCM system with a PCMPS2 power supply. Use it right out of the box for 1 to 3 zone applications or expand it with other PCM modules. Provides all the same great features found in the PCM2000 zone paging system shown above.

1 PCMTIM	Telephone Interface module
1 PCMCPU	Central Processor module
1 PCMZPM	3-Zone Paging module
1 PCMPS2	System Power Supply

- Provides 1 to 3 paging zones • Expandable up to 99 zones
- Up to 32 programmable paging zone groups
- Emergency All-Zone Override Paging input
- Two-way Communications
- 250W power handling capacity • Code Calling
- Background music distribution works with systems that are central- or self-amplified
- Drives up to 40 self-amplified speakers per zone module
- Night Ringer, 90V and contact closure
- Real-time Clock & Master Clock Synchronization
- Some features described above require additional equipment



70-VOLT SPEAKERS AND HORNS



- CSD 1X2**
Drop-In Ceiling Speaker
Sold In Pairs Only
- **NO ceiling tile cutting!**
 - 1' x 2' perforated grille
 - 8" dual cone speaker
 - 5W 25/70V transformer
 - 100° dispersion
 - 96dB SPL (1w@1m)
 - For use with 2' x 4' & 2' x 2' suspended tile ceilings



- SPT15A Paging Horn**
- 15-watts continuous
 - Rotary switch-selected power taps on transformer models
 - Consistent voltage (70V/25V) and 8-ohm versions
 - Weatherproof
 - Tilt & swivel base for easy aiming
 - All metal construction



- HFSF1LP**
Low-Profile, High-Fidelity, Small-Footprint Ceiling Speaker
- Superior sound in a compact enclosure (7-1/4" diameter)
 - Wide-dispersion coaxial driver
 - Only 6-1/4" diameter ceiling opening required
 - For 70V and low-impedance systems
 - Off-white paintable finish



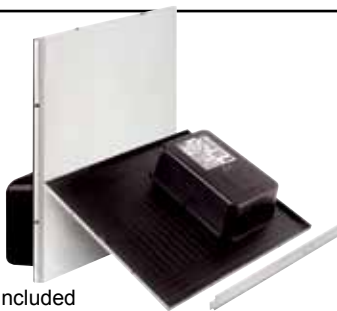
- CSD 2X2**
Drop-In Ceiling Speaker
- **NO ceiling tile cutting!**
 - 70V/25V, 4-watt transformer
 - 8" main cone
 - For use with both 2 ft. x 2 ft. and 2 ft. x 4 ft. suspended tile ceilings
 - Support rail crossbar (included)
- Sold In Pairs Only**
- CSD 2X2VR**
- As above with volume control
- Sold In Pairs Only**

- CSD2X2U** **Sold In Pairs Only**
Bright White
2 x 2 Drop-In Ceiling Speaker

- CSD1X2U** **Sold In Pairs Only**
Bright White
1 x 2 Drop-In Ceiling Speaker

Easy assembly saves installation time, effort, and cost

- Tile support rail for 2' x 4' ceilings included
- 2' x 2' perforated grille over entire front; bright white finish
- 8" cone speaker with 10 oz. magnet and tweeter, and 25/70V transformer
- 5 power taps (4W, 2W, 1W, 1/2W, & 1/4W); selectable by rotary switch



IN-GROUND LOUDSPEAKER

- G8G**
All-Weather Loudspeaker
- In-ground, outdoor, all-weather speaker with fully-sealed enclosure with 8" woofer and 1" tweeter
 - 8-Ohm or 70V taps included
 - High efficiency and power handling for optimum performance
 - Dual-layer voice coil
 - Compound rubber surrounds resist UV rays and salt spray and chemicals
 - Multiple input power connections
 - Corrosion-resistant driver frames
 - Wide coverage angles
 - Available in green only



- S86T725PG8U Ceiling Speaker**
6 Oz. Magnet Bright White
- S810T725PG8U Ceiling Speaker**
10 Oz. Magnet Bright White

- S810T725PG8WVK Ceiling Speaker**
10 Oz. Magnet White/Volume Control
- S810T725PG8W Ceiling Speaker**
10 Oz. Magnet White



- 4-watt capacity
- 8" cone speaker for excellent audio quality
- 6 different power taps available (4, 2, 1, 1/2, 1/4, 1/8 W)
- T725 4-watt transformer
- Off-white enamel over steel grille ("W" versions)
- Bright white enamel over steel grille ("U" versions)
- Pre-assembled for faster installation
- Works with both 70V and 25V amplifier outputs
- Available with volume control – recessed or with knob (VR and VK models only)
- 6 oz. or 10 oz. magnet weights

ALL-WEATHER SURFACE MOUNT LOUDSPEAKERS



- A2, A2T**
- 6" woofer and 1/2" tweeter
 - Maximum power handling capacities of 100W at 8-ohm (A2) and 16W at 70V (A2T)
 - Coaxial capability
 - High-precision, high-performance sound
 - Completely weatherproof, fully-sealed cabinet for indoor and outdoor applications



- A6, A6T**
- 6" woofer and 1-1/8" tweeter
 - Maximum power handling capacities of 150W at 8-ohm (A6) and 32W at 70V (A6T)
 - 2-Way capability
 - High-precision, high-performance sound
 - Completely weatherproof, fully-sealed cabinet for indoor and outdoor applications



- A8, A8T**
- 8" woofer and 1-1/8" tweeter
 - Maximum power handling capacities of 175W at 8-ohm (A8) and 64W at 70V (A8T)
 - Coaxial capability
 - High-precision, high-performance sound
 - Completely weatherproof, fully-sealed cabinet for indoor and outdoor applications

TARGET IS YOUR BEST SOURCE FOR BOGEN

TOLL FREE – 800-873-5528 • LOCAL – 301-296-9400 • FAX – 301-296-9494

SELF-AMPLIFIED 24-VOLT PAGING PRODUCTS



+20
CURRENT UNITS

Telephone Interface/Zone Controller

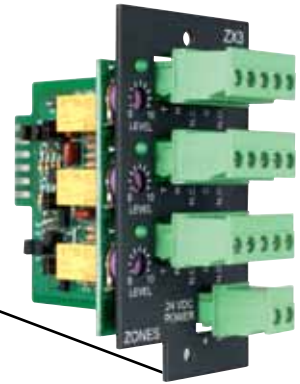
- UT11**
Single-Zone Universal Telephone Interface
- Emergency and general all-call paging
 - Interface with any telephone port type
 - Background music input with variable muting options
 - 24V DC 1A power supply included
 - Output limiter ensures consistent page volume
 - Override, triggered tones, night ring, and AUX relay contact
 - 150 speaker T/R drive capacity per output



+20
CURRENT UNITS

Telephone Interface/Zone Controller

- UTI312**
Multi-Zone Universal Telephone Interface
- Expandable from 3 to 12 zones with ZX3 modules
 - Up to 24 paging zone groups
 - Interface with any telephone port type
 - Two background music inputs with variable muting options, assigned by zone
 - 24V DC 1A power supply included
 - Override, triggered tones, night ring, code calling, and AUX relay contact
 - 150 speaker T/R drive capacity per output



Zone Controller ZX3

- 3-Zone Expansion Module**
- Provides 1-3 paging zone inputs
 - Pluggable 24V DC power distribution terminal strip
 - Easy wiring using pluggable terminal strips for each zone

24-VOLT POWER SUPPLIES

Switch Mode Power Supplies

- Switching technology provides large current capacities in compact packages
- Easy and secure wall mount with holster, or flange mount
- Generates little heat



- PRLSI**
Combo Power Supply
+9 CURRENT UNITS
- 450mA@24VDC
 - Buffered audio output
 - For up to 25 self-amplified speakers



+12
CURRENT UNITS

- SPS2403**
+6 CURRENT UNITS
- 300mA@24VDC
 - Buffered audio output
 - Barrel connectors
 - Receptacle mount

- SPS2406**
- 24VDC@600mA power rating
 - Receptacle mount
 - Wires, barrel type connections



+20
CURRENT UNITS

- SPS2410**
- 24VDC@1.0A power rating
 - Holster mount
 - Pluggable terminal strip connections



+50
CURRENT UNITS

- SPS2425**
- 24VDC@2.5A power rating
 - Holster mount
 - Pluggable terminal strip connections



+108
CURRENT UNITS

- SPS2466**
- 24VDC@6.6A power rating
 - Holster mount
 - Pluggable terminal strip connections

MIC/LINE MIXER



- CAM2**
- 4 MIC inputs
 - Low-impedance, balanced MIC inputs
 - 1 High-impedance AUX input
 - Low-noise, active mixing
 - Master volume control
 - Input clipping indicator for each channel
 - 5 segment LED output level meter
 - XLR microphone input connectors
 - Phantom power selectable per MIC input
 - Unbalanced line-level output
 - Balanced XLR output

SOUND PRESSURE LEVEL METER

- SPLM**
- Removable windscreen
 - 1/2" Condenser microphone
 - Large 2-1/8" LCD screen with 4-digit readout
 - Resolution: 0.1 dB
 - Wide measuring range: 30 to 130 dB, including selectable 50 dB dynamic ranges
 - Calibration potentiometer
 - Bar graph and over/under indication
 - A/C Frequency weighting selections
 - MAX value hold function to lock maximum reading
 - Data record function, with data full indicator



SELF-AMPLIFIED 24-VOLT SPEAKERS AND HORNS

24 Volt Amplified

AH5A Self Amplified Metal Horn Speaker

- 5-watts
- 400 mA
- Weatherproof
- Adjustable volume controls
- Tilt and swivel mounting brackets
- Requires 24V power supply

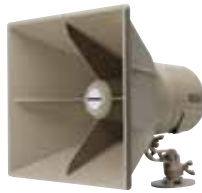


AH15A As above, 15-watts

24 Volt Amplified

SAH15 Self Amplified Plastic Horn Speaker

- 15-watts
- Low DC current draw and heat dissipation
- Unique flare shape
- Rotatable horn
- Cast aluminum swivel mount
- Requires 24V power supply



24 Volt Amplified

Self Amplified Drop-In Ceiling Speaker with Volume Control

- Quick and easy to install; wire and drop in place
- 2' x 2' design fits in 2' x 2' & 2' x 4' ceiling grids
- 8" full-range, cone speaker
- Self-contained 1W amplifier
- Front-mounted volume control
- Fully enclosed, industrial grade steel construction; finely perforated front grille; off-white or bright white finish
- Support rail for 2' x 4' ceilings included
- Complies with NFPA National Code 160b and UL-2043
- Requires 24V power supply



ACD2x2 – Off White
ACD2x2U – Bright White

Sold In Pairs Only
Sold In Pairs Only

A Self-Amplified System Is:

Self-Amplified Speakers contain an individual, built-in miniature amplifier that drives the speaker directly. Each speaker requires 4 wires. Two wires supply the raw 24V DC voltage to power the speaker's internal amplifier and another 2 wires supply the low-level audio paging signal to the amplifier's input. All amplified speakers contain volume controls to adjust output level.

A Power Supply or multiple power supplies which supply the raw 24V DC voltage that will power the amplifier built in to each self-amplified speaker. Several power supplies can be located in convenient areas in the facility.

An Interface Device that connects the paging system to background music sources and the telephone system and supplies a telephone level audio paging signal to all the speakers in the system. (Depending on the telephone system and number of speakers in the system, an interface device may not be needed.)



ASWB1

- Self-Amplified Wall Speaker**
- 8" cone speaker for excellent audio quality
 - Simulated walnut finish
 - Self-contained 1-watt amp
 - Interfaces with 600Ω telephone line
 - 3/8" particle board construction
 - Easy wall mount installation
 - Requires 24V, 50mA power supply



SA-H5-B Self-Amplified Horn

- 5-watts
- 325 mA
- 24VDC (requires power supply)
- 118 dBA @ 1 meter
- Frequency response: 375 Hz – 10KHz
- Weatherproof metal construction
- Base is horizontally & vertically adjustable



SA-H15-B Self-Amplified Horn

- 15-watts
- 900 mA
- 24VDC (requires power supply)
- 122 dBA @ 1 meter
- Frequency response: 375 Hz – 10KHz
- Weatherproof metal construction
- Base is horizontally & vertically adjustable



ASM1 Self-Amplified Surface Mount Speaker

- Installs in less than a minute
- Built-in 1W amplifier
- Fast, easy, clean installation
- Direct and reflected sound paths create wide dispersion angle
- Lightweight and durable plastic shell with a paintable off-white finish
- Complies with NFPA National Code 160b and UL-2043



Self-Amplified Ceiling Speaker

- 8" cone speaker
- Front mounted volume control knob (detachable on DK versions)
- Self-contained 1-watt amp
- White enamel over steel grille
- Requires 24V power supply
- 90° dispersion pattern

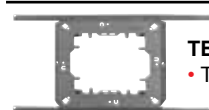


ASWG1

In Off White Finish

ASWG1DK

In Off White Finish/Detachable Volume Knob



TB-8
• Tile bridge



RE-8
• "Top Hat"



MR-8
• Steel plaster ring



SMTB
• Tile Bridge for Easy Install Speakers (SM1EZ/SM4T)

TARGET IS YOUR BEST SOURCE FOR BOGEN

TOLL FREE – 800-873-5528 • LOCAL – 301-296-9400 • FAX – 301-296-9494

TOOLS and TESTERS

LINEMAN'S TEST SETS

FLUKE networks.

TS®19 Test Set with Angled Bed-of-Nails Clips 19800-009

- High impedance DataSafe™ operation in monitor mode
- Tone (DTMF) and pulse operation • Redial
- Polarity indication

The Fluke Networks TS-19 Butt Set combines all the essential test set features at an affordable price.

Features such as Tone (DTMF) or Pulse operation, Talk/Monitor capabilities, and polarity test button make this test set the perfect combination of features and price.



FLUKE networks.

TS®25D 25501-009

- Caller ID and Call-waiting Caller ID
- 1-way Amplified Speaker for hands free monitoring
- Tone generator simplifies wire identification with a probe
- Talk battery to power conversations
- DTMF Digit Grabbing to test other equipment for proper DTMF generation
- DSL/POTS filtering
- Speed dial (10 nos., 23 digits ea.)



FLUKE networks.

TS®44 Deluxe Test Set with Angled Bed-of-Nails Clips 50801-009

- DataSafe including ADSLSafe Technology
- Low & high voltage indication/warning
- Low current (mA) indication/warning • Drop Safe 20 feet
- Enhanced weatherproof/waterproof case design
- Mountable, top or bottom, steel locking belt clip
- Line cord strain relief • Software upgradeable
- Low battery warning • Mute indication • Polarity indication
- Tone & pulse • 2-way hands-free speakerphone & MORE!



FLUKE networks.

TS®22 Test Set with Angled Bed-of-Nails Clips 22800-009

- Amplified speaker for hands free monitoring
- DropSafe – passes 20 foot drop test
- RainSafe in severe weather conditions
- PBX pause button and Mute switch
- Stores 9 18-digit speed dial numbers
- Last number redial • Audible ringer for callbacks



TS22A Test Set 22801-009

- As above with 2-way speakerphone for handsfree use

FLUKE networks.

TS®30 Test Set with Angled Bed-of-Nails Clips 30800-009

- High impedance monitor mode • Hearing aid compatible
- Automatic regulation of speech levels
- Tone and pulse operation • Last number redial
- Hook flash button • RainSafe™ weather protection
- Works with either line polarity • Audible electronic ringer
- High current and over voltage protection
- Field replaceable spring-loaded belt clip
- Transmitter Mute switch • Talk & Monitor modes



FLUKE networks.

TS®52 PRO Test Set with Angled Bed-of-Nails Clips and RJ11 Plug 52801RJ9

- DataSafe Pro – Superior high-impedance monitoring, lockout and override • Back lit LCD and keypad
- DropSafe – Passes 20 foot drop test
- DSL/POTS Filtering Technology
- Designed for use in rainy conditions
- Data indication • Voltage indication • Current (mA) indication
- Caller-ID • DTMF Digit Grabbing
- 2-Way hands-free speakerphone



FLUKE networks.

TS®42A DLX Test Set with Angled Bed-of-Nails Clips 42801-009

- Enhanced weatherproof/waterproof case
- DropSafe tested to 20 feet • Low battery warning
- 2-way hands-free amplified speakerphone
- Low & high voltage indication/warning
- Low current (mA) indication/warning • Speed dialing
- Over voltage and over current protection
- Software upgradeable • Line and battery powered
- Redial • PBX pause button • Audible ringer



CLARITY

Amplifying Your Life™

WTS-501

- Talk/Ring/Monitor switch located on handset
- Switchable tone/pulse dialing
- Hi-impedance monitor is data safe
- Polarity Indicator • 10-number memory
- 3-position volume for up to 12db gain
- Protection against overvoltage and transient ringer signals
- Moisture resistant • Headset jack • Rugged design
- Direct connect to most batteries/pwr supplies



TM-500

- Luminescent (glow-in-the-dark) keypad
- Can be used safely on a DSL enabled line
- High Impedance monitor
- Over voltage and over current protection
- Tone and pulse dialing • Polarity test with LED indicator
- 32 digit last number redial and pause
- 10 number speed dial • Line powered, no battery needed
- Headset (included) for hands free operation • RJ11 socket



TM-700

- LCD (96 x 48 pixels, 5 lines) display
- Can be used safely on a DSL enabled line
- High Impedance monitor • 32 digit memories
- 10 x speed dial memories plus ten "last number redial"
- Over voltage and over current protection and warning
- Tone and pulse dialing • RJ11 socket
- Headset included for hands-free operation
- Cordset with large angled nose with bed-of-nails



76 TARGET'S GOT THE RIGHT TESTERS AND METERS FOR YOUR NEXT JOB

E-MAIL – TGSales@targetdist.com • INTERNET – www.targetd.com

JackRapid™ Punchdown Tool

JR-PAN-2

JackRapid Termination Tool (for Panduit NK688M, NKP5E88M)

JR-ADC-2

JackRapid Termination Tool (For ADC C6a CopperTer® UTP RJ45 jack and the C6 TrueNet® KM8 UTP RJ45)

JR-ORT-2

JackRapid Termination Tool (For Ortronics TJ5E00, TJ600, TJ610)

JR-SYS-2

JackRapid Termination Tool (For Systimax MGS400, MGS500, MFP420, MFP520)

JR-LEV-2

JackRapid Termination Tool (For Leviton 61110, 5G110, 6110G)

JR-SYS-UNI-1

JackRapid Termination Tool (MPS100E, C5, M1BH & UNJ600/500/300)

JR-LEV-1

JackRapid Termination Tool (For Leviton 41106, 41108, 5G108)



Reduces installation time

- Easy-to-use tool seats and cuts all wires at once
- Increases productivity – install jacks 8 times faster



Accurate, clean and consistent cuts and terminations

- Consistent terminations every time – no more wasted jacks
- Built-in bed helps hold jack in place

Eliminates user fatigue

- Ergonomic handle • Convenient, built-in stripper

Future proof

- Replaceable blade heads for use with multiple vendor jack types

Wall-friendly

- Unique design easily accommodates close-to-wall installations



11292-000

IS50 Pro Tool Kit

- Includes ergonomically designed Dur-a-Grip pouch for convenient tool storage on belt
- D914™ industry standard punchdown tool makes for solid terminations
- Easy to use cable stripper
- Use the Probe Pic to check for loose or damaged connections
- Cut and strip wire cleaner and faster with the Electricians' D-Snips™

Kit Includes:

- D914S ImpactTool • D-Snips
- Cable Stripper • Dur-A-Grip™ Pouch
- EverSharp™ 66/110 Blade



26000-900

Pro 3000 Analog Tone and Probe Kit

- Includes 26100-900 Probe and 26200-900 Toner
- Send tone signal up to 10 miles on most cables
- Works on de-energized AC wire, telephone/twisted pair wire, all voice and data category rated cable, all coax cable, speaker wire and security wire

26100-900

Pro 3000 Analog Probe

- Probe only

26200-900

Pro 3000 Analog Toner

- Select solid or alternating tone options, indicated with solid or flashing LEDs
- Line cord features Angled Bed-of-Nails clips and ruggedized RJ-11 plug for direct access to phone & data jacks without adapters



MT-8200-60A IntelliTone 200 Kit

- IntelliTone 200 Toner and 200 Probe
- Coax F connector adapter
- Two RJ11 and two RJ45 patch cables
- Test leads with alligator clips, lanyards
- DSP rejects noise and false signals
- Precisely isolates individual wire pairs
- Tones safely and clearly on active networks
- Diagnoses essential cable information
- Identifies/diagnoses POTS with Line service & polarity
- Identifies & diagnoses 10/100/1GB Ethernet link connectivity + more!

Also available individually:

- MT-8200-61A** IntelliTone 200 Toner
- MT-8200-63A** IntelliTone 200 Probe



11290-000

Telecom Contractor Tool Kit I

- TS®30 Test Set
- D814™ Impact Tool
- Cable Stripper • ProbePic
- Electrician's D-Snips™
- Standard Modular Adapter
- 66/110 Eversharp Blade
- Soft-Sided Zippered Case

11289-000

Telecom Contractor Tool Kit II

- Pro2000 Tone & Probe
- D814™ Impact Tool
- Cable Stripper • ProbePic
- Electrician's D-Snips™
- Standard Mod Adapter • 66/110 Eversharp Blade
- Soft-Sided Zippered Case



PTNX2-DLX

Pocket Toner® Test Kit

- Test coaxial cables for continuity, AC and DC voltage, shorts, opens, 50-75 Ω termination, and polarity with Dial Tone Detective™ adapter
- Low-voltage circuit protection for both the unit as well as the detachable toner
- Dual audible indicators in the main body and detachable buzzer toner units
- Removable push on connectors
- Auto shut-off • Easy-to-read indicators
- Male and female adaptable toner section
- Removable push-on connector
- Lightweight, durable anodized aluminum body



FT525

Fiber Optic Cleaning Kit

- Contains everything needed to eliminate the #1 cause of fiber link failure: contamination: FiberInspector Mini; complete cleaning supplies (cleaning cube, ten cleaning cards, solvent pen, 2.5mm port cleaning swabs and 1.25mm port cleaning swabs) and soft carrying case
- Supports all fiber connector types in datacenter and campus environments
- IBC™ OneClick Cleaners—no training required!
- Solvent pen precisely dispenses specially formulated fiber cleaning solution
- Cards for convenient cleaning of fiber end-faces

Rugged carrying case stores and transports all cleaning tools



FT600

FiberInspector™ Pro

Kit includes:

- FiberInspector Pro Video Microscope, FT650 Fiber Probe, FT630 Fiber Display, AC adapter/battery charger, probe adapter tips (ST, SC, FC and universal 2.5mm patch cord tip) and hard carrying case
- Dual-magnification probe allows quick changes between 200x and 400x
- Large 3.5" display provides crisp, clear images of microscopic debris and end-face damage
- Troubleshooting is 10 times faster than with traditional scopes
- Various probe adapter tips allow for inspection through many different connector port types
- Rugged carrying case and protective boot prevent damage
- Capture and upload images when used in conjunction with the OptiView™ or OptiFiber™



FTK1000

SimpliFiber Pro® Fiber Test Kit

- Includes SimpliFiber Pro power meter, 850/1300 multimode source (SC port), and carrying case
- Single-port, simultaneous dual wavelength feature completes testing in half the time and saves measurements from both wavelengths into one record
- Additional 1490 and 1625 nm wavelengths for broader applications
- CheckActive™ feature emits an audible tone and displays an icon when a live fiber is detected
- FindFiber™ Remote ID enables one individual to quickly identify cable connections or routings
- Min/Max capability automates precision tracking of intermittent power fluctuations
- Large internal memory save 1000 results
- LinkWare Cable Test Management software helps to analyze test results and create professional test reports



DTX-1800-120 CableAnalyzer

- Certify 10 Gig Performance. The DTX-1800 with DTX 10 Gig Kit measures the performance for 10 Gigabit Ethernet and Alien Crosstalk (ANEXT and AFEXT) in full compliance with industry standards to 500 MHz
 - Zero to certified in 9 seconds.
 - Level IV Accuracy. Get the most accurate test results in the shortest possible time
 - 900 MHz frequency range. Prepares you for future applications, such as 10 Gigabit Ethernet, Class F and CATV
 - Complete fiber certification Certifies fiber to Tier 1 (Basic) and Tier 2 (Extended) specifications using DTX Fiber Modules and the DTX Compact OTDR • 12-hour battery life
- Includes:** DTX-1800 Main and Smart Remote, LinkWare PC Software, 128MB MMC Card, Cat 6A/Class EA Permanent Link Adapters (2), Cat 6A/Class E Channel Adapters (2), Headsets for Talk (2), AC Chargers (2), Carrying Case, USB Interface Cable (Mini-B) & User Manual



TCB360K1

Cable Prowler PRO Test Kit

- Displays length measurement for each pair in feet/meters
- Detects presence of PoE and class of PoE
- Detects and reports current link speed and link capabilities for active Ethernet drops up to 1 Gbps
- Link light to identify location on a hub/switch/router port
- Tests ethernet cable configuration and verifies connectivity while conducting tests for opens, shorts, miswires, split pairs, and reverses • Full color graphical wire-mapping
- Generates selectable tones on selected pins for use with tone tracers
- Supports up to 8 testing & ID remotes for network & telephone cables

Kit Includes

Cable Prowler™ main unit, #1-8 Network/Tel Test and ID Remotes, #1-8 Push on Coax Remotes, #1-12 RJ45 Data Remote set, Micro USB cable, No-Fault cable - Qty 2, RJ45 Port Saver, RJ45 to Alligator 12 inch, F Female to F Female adapters, set of 2, BNC Female to F Female adapter, BNC Female to F Male adapter, Heavy duty case



N044-000-R

Network Cable Continuity Tester for Cat5/Cat6, Phone and Coax Cables

- Two piece test unit with RJ45, RJ12 (6P6C) jacks and coax jack.
- Identifies mis-wires, short circuits, and open circuits
- Coax adapters and terminator for testing BNC and F type coax cables
- Vinyl storage pouch



601K-G Tone and Probe Kit
Includes the 77M-G Tone Generator and the 200B-G Tone Probe amplifier in a zippered nylon pouch.
Includes:
77M-G Tone Generator
200B-G Tone Probe Amplifier



701K-G Test Set Kit
Used to identify single conductors or cables within a bundle, at a cross-connect point or at remote ends.
Includes:
77HP-G Tone Generator
200EP-G Tone Probe Amplifier and Carry Case



711K Test Set Kit
For the telecom pro, for use on single conductors, twisted pairs, coax cables and de-energized electrical wire.
Includes:
77GX Tone Generator
200GX Tone Probe Amplifier and Carry Case



801K Test Set Kit
For more accurate wire identification, the 801K virtually eliminates power related noise from tone and probe operations. Includes:
77HP/6A Tone Generator
200FP Tone Probe Amplifier and Carry Case



77HP/6AC Tone Generator

- Permits techs to identify the conductor within a bundle, or at a cross-connect point or at the remote end
- Can be used on twisted pair wiring, single conductors, coaxial cables, de-energized AC wiring and most other wiring



200GX Inductive Amplifier

- Features powerful speaker, recessed on/off button control & high gain for accurate wire ID
- Also includes adjustable volume control, an LED for visual signal strength indication and recessed telephone test set connectors.
- New rugged, ergonomically-designed housing



AT8L LAN Toner Kit
Sends tone and blinks HUB, Switch Port and PC activity lights for fast identification. For datacom, telecom, CATV, alarm/security and audio wiring. Includes:
• AT8L LAN Toner
• 200GX Inductive Amp • Case



468 Modular Cable Tester

- Tests 258, T568B, 10BASE-T, and T-568A standards
- Battery operated (9V not included)
- Identifies opens, shorts, reversals and transposed pairs
- Sequencing red and green LED indicators



200EP-G Tone Probe

- Used in conjunction with any tone generator
- Powerful speaker
- Also includes a headset jack (audio shock protected) and a LED Flashlight for working safely behind furniture, inside racks or in dim lighting conditions



200FP Filter Probe

- LED for visual signal strength
- 5-minute auto shut off
- Low battery indicator
- Powerful rear-fire speaker
- Recessed on/off push button
- Adjustable sensitivity/volume
- Blended carbon/plastic tip
- Recessed tabs for buttset or headset



540-15 Glo Stix 15-Foot Kit

- Kit includes (3) 5-foot Glo Stix, a bullet nose and a hook nose tip, 3/16" diameter
- Luminescent fiberglass rods glow in the dark to make fishing voice, data and video wires easier in dark spaces, such as above ceilings, in walls, and below sub-floors
- More flexible for fishing in walls through outlet box holes
- Sturdy, steel-threaded connectors are interchangeable with Greenlee 1/4 IN (6.4 mm) Fish Stix
- Clear, non-metallic storage tube keeps Glo Stix charged and ready to use
- 200 lbs. (0.9 kN) maximum pulling strength

540-12 Fish Stix
12' (3.6 m) kit with bullet nose and 'J' hook threaded tips, packaged in clear plastic tube, threaded tips, 1/4" fiberglass

540-24 Fish Stix
24' (7.3 m) kit with bullet nose and 'J' hook threaded tips, packaged in clear plastic tube, threaded tips, 1/4" fiberglass

- Highly visible green color rods can be easily threaded together and seen when working above ceilings, down walls, or under raised floors
- 1/4 IN (6.4 mm) diameter fiberglass adds rigidity when connecting multiple sections
- 200 lbs. (0.9 kN) maximum pulling strength
- Two different threaded tips accommodate various bundles of wire or cable



430 Poly Fish Line

- 6500-feet
- Resists tangling when dispensing
- Rot and mildew resistant
- Handy reusable plastic dispenser pail



0158-12 Carry Bag

- Constructed of heavy-duty nylon
- 31 multi-use reinforced pockets, inside and out
- Large-opening steel-framed mouth with zipper • Padded handles
- Adjustable shoulder strap
- Large interior

TEST KIT

T129K1 VDV MapMaster™ Kit Mapper, Continuity Tester and Tone Generator

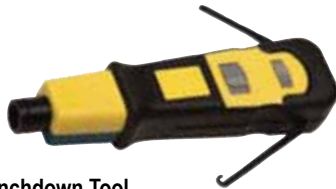
The VDV 2.0 MapMaster combines continuity testing, mapping, tone generation and length measurement functions in a single tester.

Kit Includes

- VDV MapMaster 2.0
- Case & Insert Foam
- RJ45 #'s 1-12 Remote Set
- Coax F #'s 1-8 Remote Set
- RJ45 Port Saver
- RJ45 to Alligator Clips Cable
- NO-Fault Cable • "F" Female to "F" Female Adapters, set of 3
- BNC Female to "F" Female Adapter • BNC Female to "F" Male Adapter
- 9V Battery • Instruction Manual



PUNCHDOWN TOOL



PRO-Strike™ Punchdown Tool 13159 With 66/110 Combo blade

- Terminate and cut Cat3/5/5e/6 cables
- Spring loaded for fast, low effort wire seating and termination
- Bayonet style (twist & lock) blade retention socket is compatible with industry standard tools and blades
- New built-in hook - feeds or removes wire
- New multi-use spudger - for screwdriver, IDC insert tool or to clean debris
- 110, 66, 630, Krone and BIX™ style interchangeable blades
- Color coded yellow on the cut side of the tool per industry standard
- Adjustable low and high force impact settings
- Spare blade storage compartment in the handle

BongoTies

19501 BongoTies®

Handy ties for cables and other unruly items, BongoTies have unlimited uses.

- Easy to apply - Easy to remove
- Sturdy, professional quality
- Patented button-type design for a positive secure closure
- Economical and lightweight
- Versatile - stretches to approx. 24"
- Made entirely of environmentally friendly materials- heavy gauge, natural rubber and bamboo • Package of 10



ALL-IN-ONE STRIPPING TOOL

15018C All-In-One Stripping Tool

- Coax (Video) replaceable cassette blades are pre-set, no adjustment required
- Twisted pair (Data) is adjustable and covers a wide range of Cat5e and Cat6 cables
- Round cables (Voice) is adjustable and covers a wide range of telephone round and flat satin cables



TERMINATION KIT

90173

EZ-RJPRO™ Termination Pod

Application:

Category 3, 5, 5e or 6 compliant data networks

Tools Included:

- EZ-RJPRO HD Crimp Tool, P/N 100054
- Cat5e/6 Cable Jacket Stripper, P/N 15015
- Electrician's Scissors, P/N 10517

Connectors Included:

- EZ-RJ45 Cat5e, P/N 105003, 100 pcs
- EZ-RJ45 Cat6, P/N 105004, 100 pcs
- EZ-RJ12/11, P/N 105005, 50 pcs
- Simplifies twisted pair terminations
- Includes Cat5 and Cat6 EZ-RJ45® connectors, EZ-RJ12/11 connectors



CRIMPING TOOLS



100054C EZ-RJ45® Crimp Tool

- Precision ground crimp dies • Crimps and cuts the wire in one cycle
- Straight action cut and crimp performs the best crimp
- Full cycle ratcheting mechanism provides consistent terminations every time
- Works with most RJ-11, RJ-12 and RJ-45 plugs except Amp
- Built in wire cutter and stripper • High strength, long life steel frame

CAT5/CAT5e Connector **100-003B** (100 Pieces)

Works with EZ-RJ-12/11 Connectors as well as EZ-RJ-45®

CAT6 Connector **100010B** (100 Pieces)

For EZ-RJ45 and EZ-RJPRO HD Tools

For EZ-RJ45 Tools

Shielded EZ-RJ45 for CAT5e & CAT6 **105020** (100 Pieces)

Reduces pair-to-pair crosstalk, alien crosstalk, and considerably improves immunity to noise at all frequencies

For EZ-RJ45 and EZ-RJPRO HD Tools

RJ12/11 Connector **100026B** (100 Pieces)

For EZ-RJPRO HD Tool Only

12503 All-In-One Mod Plug Crimping Tool

- Three separate crimp cavities for 4, 6, and 8 position modular plugs
- Ratchet mechanism with quick release assures optimum termination
- Round and Flat (silver satin) cable stripper • Cable cutter
- All steel frame with rust resistant black oxide finish and Rugged PVC handles



12508c Tele-Titan™ Crimp Tool Combo Pack

The genius in the patented design of the Tele-Titan is that it works like a coax compression tool and delivers straight action termination. This mighty tool is compact, rugged and nests comfortably in your hand. Its superior fit and function consistently meet your performance requirements – And we even added the modular plugs to get you started on your next data and voice projects. **Includes:**

12507 Tele-Titan™ Crimp Tool

106150 RJ-45 (8P8C) Connectors – 10-Pack

106120 RJ-11 (6P4C) Connectors – 10-Pack

