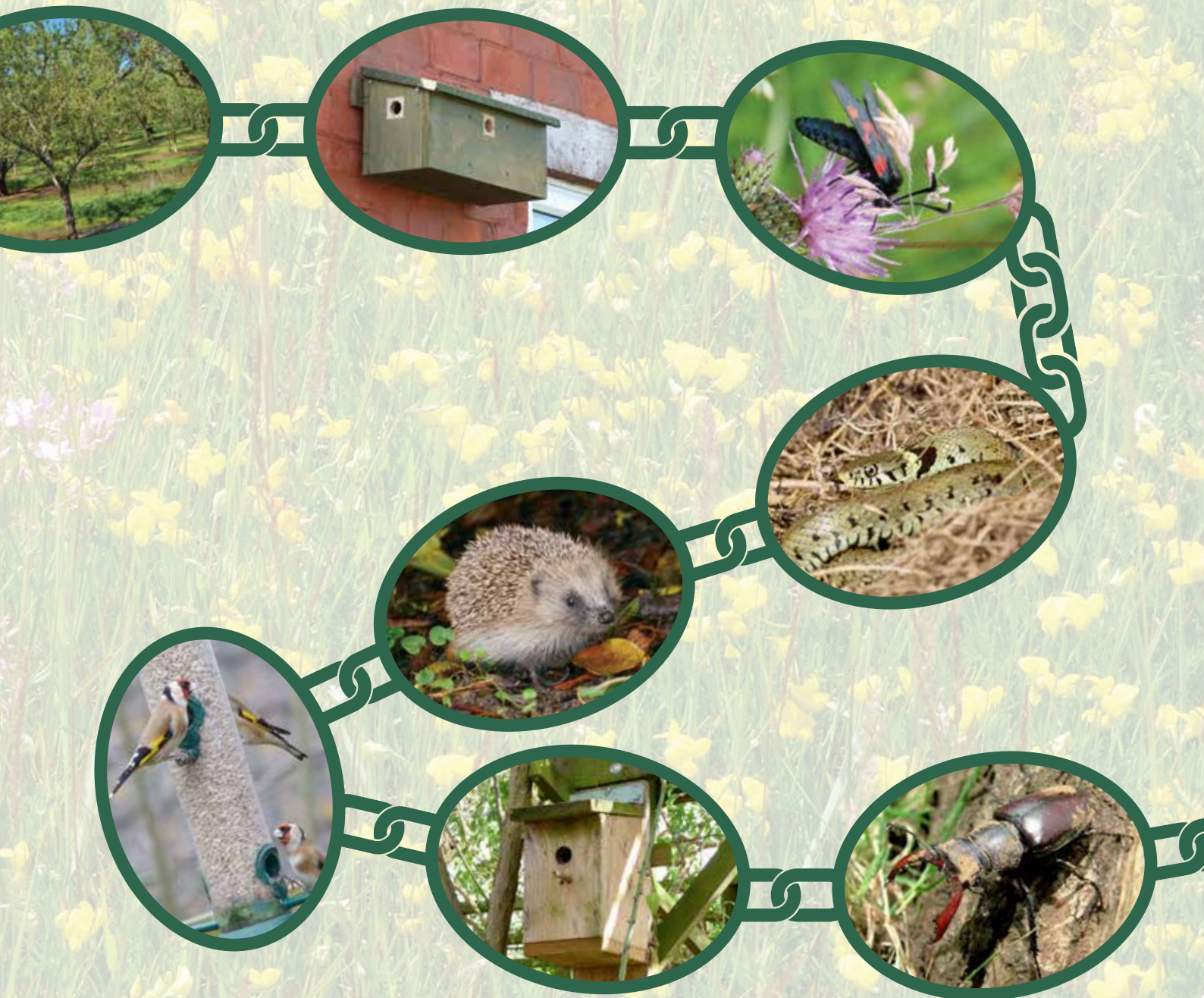


IPSWICH WILDLIFE NETWORK

Linking habitats around the town



What is an ecological or wildlife network?

An ecological/wildlife network identifies ways to create links through all types of environments, enabling species to move between areas and increasing the likelihood of their survival. Ipswich has a range of sites which help support wildlife. However, it is clear that a relatively low number of isolated sites has not protected against a decline in biodiversity. A 'landscape scale' plan is now the recognised approach and the wildlife network is one method of demonstrating the importance of connected habitats and helps focus where improvements are most needed.

Wildlife network maps help locate where the core areas of high quality habitat are and identify well-connected areas as well as those which are isolated. In turn, this information can be used to focus effort and resources to where they can make the most difference; restoring a core area, creating a corridor or stepping stone between core areas or even the creation of completely new core areas in areas of ecological deprivation.

The Ipswich Wildlife Network map (see centre pages) was prepared using data from a wildlife survey carried out between 2012 and 2014. The survey provides a system for ranking sites for biodiversity value, from 1-6, with 1 being the highest.

We aim to use this information to help towards the government target to halt biodiversity loss by 2020. In addition, the map is a planning tool, enabling the protection and enhancement of the network.



What are we doing to improve the network?

Each year, Ipswich Borough Council's Wildlife Rangers and Greenways Project will be looking at three sections of the network to maintain their wildlife value and where possible improve it. A different three areas will be looked at each year on a rolling cycle, covering everywhere over a six-year programme. In each section, we will look at our own parks, nature reserves and open spaces to ensure we have up to date wildlife survey data and appropriate management plans.

Where possible, we will identify improvements to our own sites and seek funding and community involvement to do this. We will also work with interested schools, allotment-holders and local businesses to seek improvements to their land. Further to this, we will be hoping that the residents of Ipswich and the surrounding area will play their part with enhancements to their homes and gardens – please see 'How you can help' opposite.

How you can help

Your garden or land may hold the key to the future of wildlife in Ipswich!

Many of the corridors, links and buffer zones forming the ecological network, predominantly comprise private gardens and other land that has great potential to support a wide range of wildlife in the urban area.

Some fairly simple changes to how you look after your garden could have a positive impact for many species. We will run a series of public events throughout the town each year to provide residents with information and 'wildlife homes' to take home, including building your own bird boxes (for a range of species), bug homes and hedgehog houses; or wildflower seed, native shrubs and log piles.

Please look out for local publicity for these free events, or contact the Greenways Project or Wildlife Rangers if you would like more information.



Volunteering

Many of the core sites in the network are nature reserves, parks and green spaces looked after by Ipswich Borough Council, the Greenways Project or other conservation partners. We rely very heavily on the help of a large number of dedicated volunteers to maintain and enhance these sites for wildlife and people. New volunteers are always made very welcome and will receive relevant information, training and guidance to help make the Ipswich area even better for wildlife.

Volunteers help with a wide range of tasks including woodland and wetland management, meadow cutting, heathland clearing, building bridges and boardwalks, repairing paths, installing habitat features and much more. For more information please contact the Greenways Countryside Project - see the back of this leaflet..

Contact Information

Ipswich Borough Council Parks and Cemeteries

Tel: 01473 433512

Email: parkservices@ipswich.gov.uk

Website: ipswich.gov.uk/parks

The Ipswich Borough Council Parks & Cemeteries Service has its own Wildlife Team; dedicated to protecting and enhancing biodiversity in the town. They manage wildlife sites and habitats throughout Ipswich's parks and open spaces and work very closely with the community on a wide range of events and education initiatives.

Greenways Countryside Project

Tel: 01473 433995

Email: greenways.project@ipswich.gov.uk

Website: www.greenlivingcentre.org.uk/greenways/

The Greenways Project is a well established partnership between Ipswich Borough Council, Suffolk County Council, Suffolk Coastal District Council and Babergh District Council. The Project manages nature reserves and green spaces in and around Ipswich, for the benefit of wildlife and local people.

Ipswich Wildlife Group

Tel: 01473 259104

Website: www.greenlivingcentre.org.uk/iwg

Ipswich Wildlife Group is a registered charity, relying entirely on volunteers, that promotes interest in, and conservation of, wildlife and habitats in and around Ipswich. We carry out practical conservation tasks, bid for grants to improve wildlife and green areas around Ipswich and work closely with the Greenways Project and other local groups with similar aims.

Other wildlife organisations and charities

RSPB www.rspb.org.uk

Buglife www.buglife.org.uk

Wildlife Trusts www.wildlifetrusts.org

Butterfly Conservation www.butterfly-conservation.org

People's Trust for Endangered Species (PTES) www.ptes.org

Amphibian & Reptile Conservation (ARC) www.arc-trust.org

Plantlife www.plantlife.org.uk



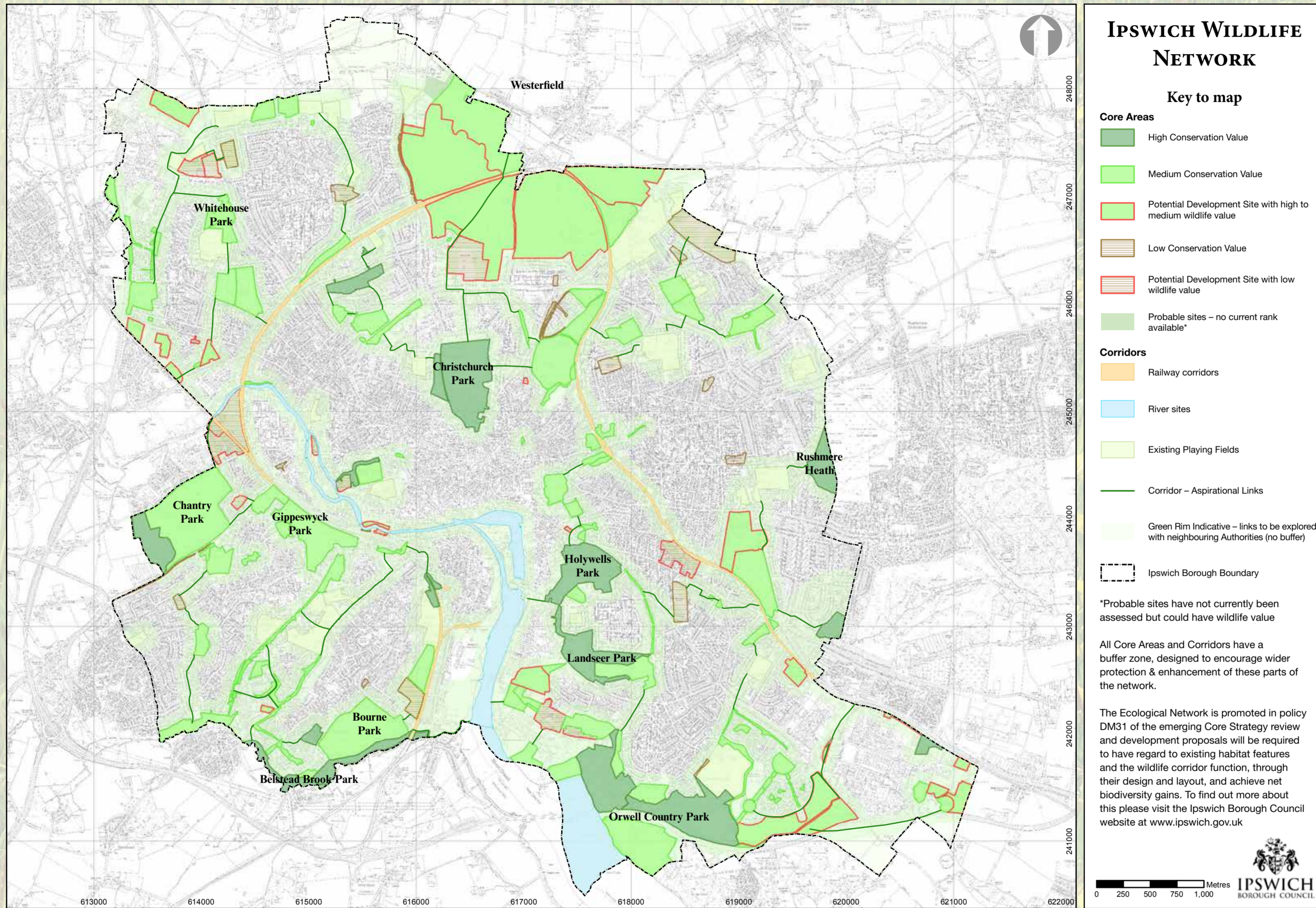
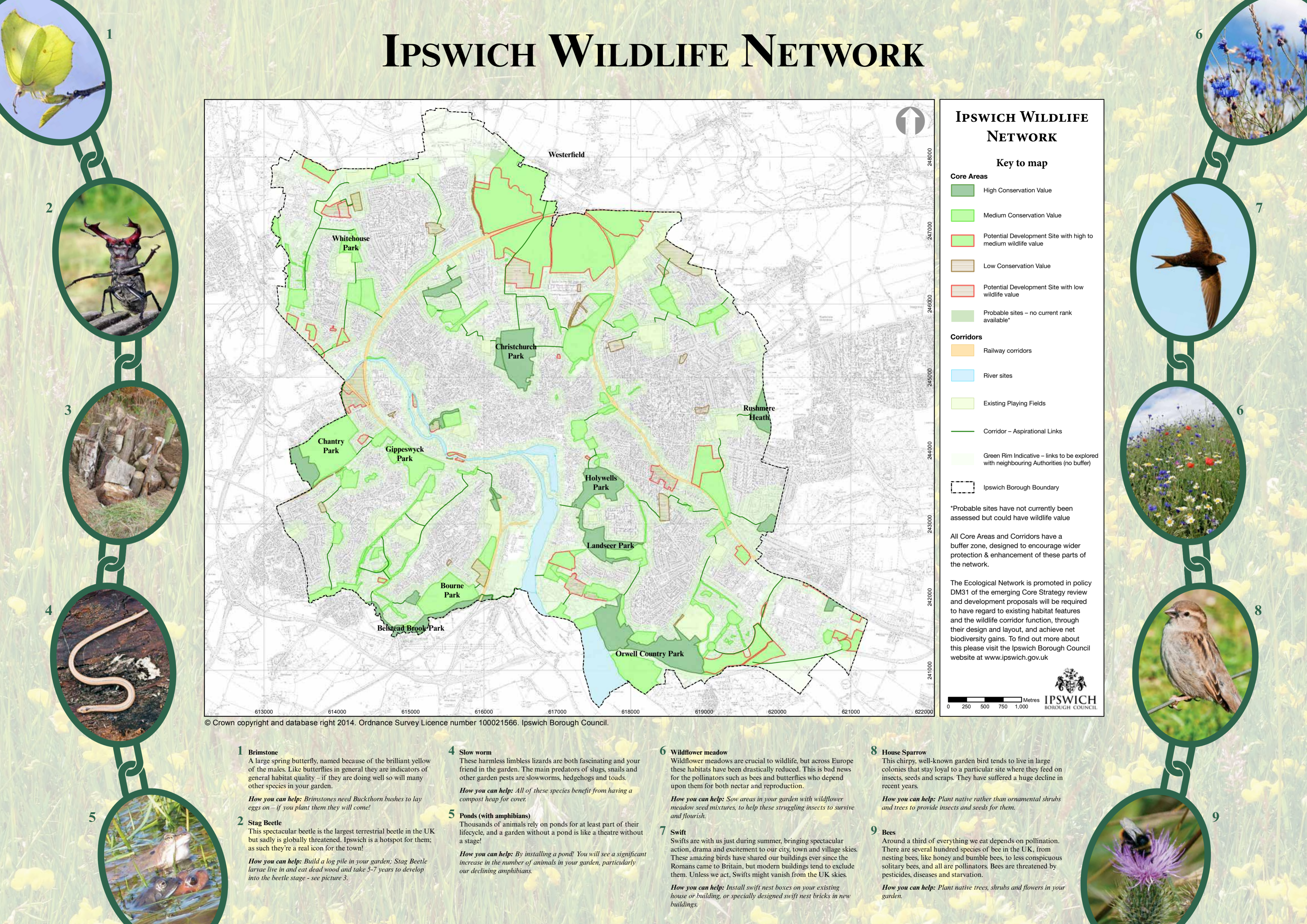
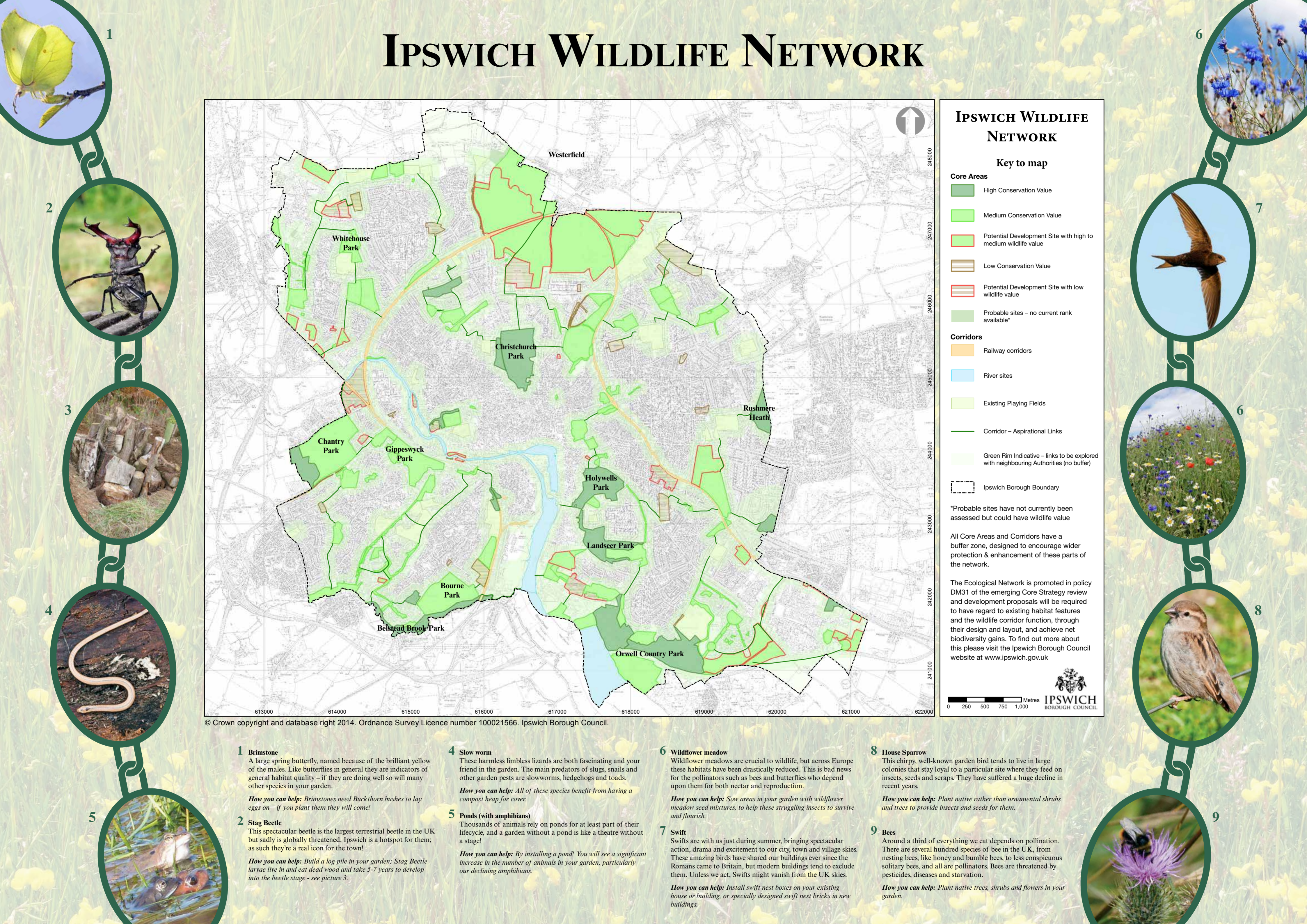
GREENWAYS
countryside project



IPSWICH
BOROUGH COUNCIL



IPSWICH WILDLIFE NETWORK



© Crown copyright and database right 2014. Ordnance Survey Licence number 100021566. Ipswich Borough Council.

1 Brimstone
A large spring butterfly, named because of the brilliant yellow of the males. Like butterflies in general they are indicators of general habitat quality – if they are doing well so will many other species in your garden.
How you can help: Brimstones need Buckthorn bushes to lay eggs on – if you plant them they will come!

2 Stag Beetle
This spectacular beetle is the largest terrestrial beetle in the UK but sadly is globally threatened. Ipswich is a hotspot for them; as such they're a real icon for the town!
How you can help: Build a log pile in your garden; Stag Beetle larvae live in and eat dead wood and take 5-7 years to develop into the beetle stage - see picture 3.

4 Slow worm
These harmless limbless lizards are both fascinating and your friend in the garden. The main predators of slugs, snails and other garden pests are slowworms, hedgehogs and toads.
How you can help: All of these species benefit from having a compost heap for cover.

5 Ponds (with amphibians)
Thousands of animals rely on ponds for at least part of their lifecycle, and a garden without a pond is like a theatre without a stage!
How you can help: By installing a pond! You will see a significant increase in the number of animals in your garden, particularly our declining amphibians.

6 Wildflower meadow
Wildflower meadows are crucial to wildlife, but across Europe these habitats have been drastically reduced. This is bad news for the pollinators such as bees and butterflies who depend upon them for both nectar and reproduction.
How you can help: Sow areas in your garden with wildflower meadow seed mixtures, to help these struggling insects to survive and flourish.

7 Swift
Swifts are with us just during summer, bringing spectacular action, drama and excitement to our city, town and village skies. These amazing birds have shared our buildings ever since the Romans came to Britain, but modern buildings tend to exclude them. Unless we act, Swifts might vanish from the UK skies.
How you can help: Install swift nest boxes on your existing house or building, or specially designed swift nest bricks in new buildings.

8 House Sparrow
This chirpy, well-known garden bird tends to live in large colonies that stay loyal to a particular site where they feed on insects, seeds and scraps. They have suffered a huge decline in recent years.
How you can help: Plant native rather than ornamental shrubs and trees to provide insects and seeds for them.

9 Bees
Around a third of everything we eat depends on pollination. There are several hundred species of bee in the UK, from nesting bees, like honey and bumble bees, to less conspicuous solitary bees, and all are pollinators. Bees are threatened by pesticides, diseases and starvation.
How you can help: Plant native trees, shrubs and flowers in your garden.

IPSWICH WILDLIFE NETWORK

Key to map

Core Areas

- High Conservation Value
- Medium Conservation Value
- Potential Development Site with high to medium wildlife value
- Low Conservation Value
- Potential Development Site with low wildlife value
- Probable sites – no current rank available*

Corridors

- Railway corridors
- River sites
- Existing Playing Fields
- Corridor – Aspirational Links
- Green Rim Indicative – links to be explored with neighbouring Authorities (no buffer)

--- Ipswich Borough Boundary

*Probable sites have not currently been assessed but could have wildlife value

All Core Areas and Corridors have a buffer zone, designed to encourage wider protection & enhancement of these parts of the network.

The Ecological Network is promoted in policy DM31 of the emerging Core Strategy review and development proposals will be required to have regard to existing habitat features and the wildlife corridor function, through their design and layout, and achieve net biodiversity gains. To find out more about this please visit the Ipswich Borough Council website at www.ipswich.gov.uk

IPSWICH BOROUGH COUNCIL