

ISSN 1387-3547, Volume 12, Number 6



**This article was published in the above mentioned Springer issue.
The material, including all portions thereof, is protected by copyright;
all rights are held exclusively by Springer Science + Business Media.
The material is for personal use only;
commercial use is not permitted.
Unauthorized reproduction, transfer and/or use
may be a violation of criminal as well as civil law.**

North American arthropods at risk due to widespread *Fraxinus* mortality caused by the Alien Emerald ash borer

Kamal J. K. Gandhi · Daniel A. Herms

Received: 21 January 2009 / Accepted: 26 September 2009 / Published online: 16 October 2009
© Springer Science+Business Media B.V. 2009

Abstract Emerald ash borer (*Agrilus planipennis* Fairmaire) (EAB), an alien invasive wood-boring buprestid beetle, is causing large-scale decline and mortality of the most widely distributed species of ash (*Fraxinus* spp.) trees endemic to eastern North America. We determined which arthropod species that are associated with ash may become threatened, endangered, and co-extinct with the demise of ash as a dominant tree species. A literature survey revealed that 43 native arthropod species in six taxonomic groups (Arachnida: Acari; Hexapoda: Coleoptera, Diptera, Hemiptera, Hymenoptera, and Lepidoptera) are known to be associated only with ash trees for either feeding or breeding purposes, and thus face high risk of endangerment. Most of these species are gall-formers followed by folivores, subcortical phloem/xylem feeders, sap feeders, and seed predators.

Another 30 arthropod species are associated with 1–2 host plants in addition to ash, and herbivory on these hosts may increase as these arthropods shift from declining ash trees. Extirpation of arthropods dependent upon ash may unleash multiple extinctions of affiliated species with which they may be inextricably linked. The demise of North American ash species due to EAB is expected to lead to biotic loss with cascading ecological impacts and altered processes within forested ecosystems.

Keywords *Agrilus planipennis* · Arthropods · Ash · Biodiversity · Emerald ash borer · Extirpation · Extinction · *Fraxinus* · Invasive species · North America

Electronic supplementary material The online version of this article (doi:10.1007/s10530-009-9594-1) contains supplementary material, which is available to authorized users.

K. J. K. Gandhi (✉)
Daniel B. Warnell School of Forestry and Natural Resources, The University of Georgia, Athens, GA 30602, USA
e-mail: kgandhi@warnell.uga.edu

D. A. Herms
Department of Entomology, Ohio Agricultural and Research Development Center, The Ohio State University, 1680 Madison Avenue, Wooster, OH 44691, USA

Introduction

During the last two centuries, anthropogenic disturbances have resulted in large-scale alterations to North American forests, leading to widespread decline in forest biodiversity (Lovett et al. 2006). Species extinction rates have increased 1,000 fold since pre-settlement times, with up to 20% of native species becoming extinct in many taxonomic groups (Chapin et al. 2000). Major disturbances include loss and changes in habitat, fragmentation, climatic changes, and establishment of alien species (Gandhi and Herms 2009). In particular, invasion by exotic species is

among the most insidious cause of decline and extirpation of native species diversity within forested landscapes (Vitousek et al. 1997; Lovett et al. 2006). The number of exotic insects and other species that are introduced and established in North America is predicted to continue climbing concurrently with international trade (Liebhold et al. 1995; McCullough et al. 2006).

Emerald ash borer (*Agrilus planipennis* Fairmaire) (EAB) is a phloem-feeding wood-boring beetle (Coleoptera: Buprestidae) indigenous to eastern Asia (Cappaert et al. 2005). It was first detected in North America in 2002 in Michigan near Detroit (Haack et al. 2002; Cappaert et al. 2005). This invasive insect aggressively colonizes and kills all major North American species of ash (*Fraxinus* spp.) that it has encountered (Cappaert et al. 2005; Poland and McCullough 2006). Millions of ash trees have died within urban and forested areas in Michigan, and billions of ash trees throughout the continent are threatened as EAB continues to spread (Herms et al. 2004; Cappaert et al. 2005). In southeastern Michigan, ash mortality due to EAB increased to more than 50% within 3 years from 2004 to 2006 (Smith 2006; Gandhi et al. 2007), and now approaches nearly 100% in all forest stands near the epicenter of the invasion (Gandhi et al. 2008). We anticipate similar trends in other forested landscapes as EAB continues to spread. As of September 2009, EAB has been detected in 13 US states including Illinois, Indiana, Kentucky, Maryland, Michigan, Minnesota, Missouri, New York, Ohio, Pennsylvania, Virginia, West Virginia, and Wisconsin, as well as Ontario and Quebec in Canada (<http://www.emeraldashborer.info>), and may well exist elsewhere.

Unlike most other wood-borers, EAB colonizes healthy as well as stressed trees in North America, thus creating a wood-borer epidemic of unprecedented intensity (Cappaert et al. 2005). Asian ashes appear to be much more resistant, perhaps by virtue of their coevolutionary history with EAB (Rebek et al. 2008). Because of the current lack of effective containment and eradication tactics (United States Government Accountability Office 2006), EAB is expected to continue to spread creating the possibility that the entire genus *Fraxinus* will be functionally extirpated from North America within the next few decades.

The wide-scale decimation of an important over-story tree species within a short-time could unleash a staggering cascade of direct and indirect effects on forest ecosystems (Mattson 1997; Gandhi and Herms 2009). *Fraxinus* ranks among the most abundant tree genera in forests of northeastern US. Ash species rank among the most widely distributed tree species in eastern North America, and are a component of more than 26 forest cover types (Burns and Honkala 1990; Cappaert et al. 2005). In communities in which they occur, ash can also rank among the most abundant tree species. For example, a survey estimated 3.8 billion white ash (*F. americana* L.) trees in Ohio, ranking it among the five most common tree species in the state (Griffith et al. 1993). Ash species contribute significantly to nutrient cycling within hardwood forests (Reiners and Reiners 1970), and are important sources of food and habitat for numerous bird and mammal species (Martin et al. 1951; Faanes 1984). Thus, the ecological impacts of widespread ash mortality may rival or even exceed resulting from decline of American elm (*Ulmus americana* L.) and chestnut [*Castanea dentata* (Marshall) Borkh.] caused by Dutch elm disease [fungal agents: *Ophiostoma novo-ulmi* Brasier and *O. ulmi* (Buisman)] and chestnut blight [fungal agent: *Cryphonectria parasitica* (Murrill) Barr], respectively (Dunn 1986; Smock and MacGregor 1988). Ironically, large-scale mortality of American elm led to an increase in the abundance and dominance of white ash trees in eastern forests (Barnes 1976).

While the loss of biodiversity due to habitat alteration and destruction are well documented (e.g., Brook et al. 2003), there is relatively little information about the impacts on native biodiversity of wide-scale mortality and extinction of an entire tree genus caused by an alien species. Widespread ash mortality will have direct effects on the fauna dependent upon ash for food, shelter, and reproduction during some part of their life-cycle. Indirect effects of ash mortality will occur at other trophic levels, impacting, for example, parasites and predators that are dependent upon the faunal communities associated with ash trees (Koh et al. 2004). The objective of this paper is to catalog the native arthropod fauna of ash, and assess their relative risk of endangerment and perhaps extirpation, should EAB decimate ash throughout North America.

Methodology

To identify arthropods associated with ash, exhaustive information searches were conducted on 16 North American (north of Mexico) ash species including *F. americana* L. (white ash), *F. anomala* Torr. ex S. Wats. (singleleaf ash), *F. berlandieriana* DC (Mexican ash), *F. caroliniana* P. Mill. (Carolina ash), *F. cuspidata* Torr. (fragrant ash), *F. dipetala* Hook. and Arn. (two-petal ash), *F. gooddingii* Little (Goodding's ash), *F. greggii* A. Gray (Gregg's ash), *F. latifolia* Benth. (Oregon ash), *F. nigra* Marsh. (black ash), *F. papillosa* Lingelsh. (Chihuahuan ash), *F. pennsylvanica* Marsh. (green ash), *F. profunda* Bush (Bush) (pumpkin ash), *F. quadrangulata* Michx. (blue ash), *F. texensis* (Gray) Sarg. (Texas ash), and *F. velutina* Torr. (velvet ash) (Wallander 2008). Sources included journal articles, book chapters, conference proceedings, extension publications, and reliable internet sources and databases such as JSTOR, AGRICOLA, and Web of Science (Electronic supplementary material). We focused on arthropods that feed and/or breed on any part of ash trees including twigs, flowers, leaves, seeds, stems, and roots. Some species known to utilize ash as ephemeral habitats were also included. To generate host specificity information, all known plant hosts for each arthropod species were recorded. We are aware of no extensive survey and rearing studies of arthropods on ash trees. Hence, this host specificity list is likely an underestimation of the numbers of arthropod species associated with ash and other plant species, and we anticipate more discoveries will be made in the future.

We assigned an endangerment risk rating to each arthropod species as follows with greater host

specificity reflecting greater risk of endangerment: (1) high risk—monophagous arthropods associated only with ash trees; (2) high-moderate risk—biphagous arthropods associated with one host species other than ash; (3) moderate risk—triphagous arthropods associated with two host species other than ash; and (4) low risk—polyphagous arthropods associated with \geq three host species other than ash. To better understand how each trophic level may respond to ash decline, high risk arthropods were further categorized on their feeding and breeding habits as foliage feeders, gall formers, phloem/xylem feeders, sap feeders, and seed predators.

Results

Our survey revealed 282 native and exotic arthropod species in eight orders associated with North American ash species with 44 (43 native and one exotic), 17, 13, and 208 species, respectively, categorized in the high (monophagous species), high-moderate (biphagous), moderate (triphagous), and low (polyphagous) endangerment risk rankings (Fig. 1, Electronic supplementary material). The most commonly represented taxa was Lepidoptera (137 species), followed by Coleoptera (76), Hemiptera (38), Diptera (12), Hymenoptera (9), Acari (7), Orthoptera (2), and Thysanoptera (1) (Table 1). Orders with the highest numbers of monophagous species (classified as high risk) were Diptera (11 species), Coleoptera (9), Lepidoptera (9), and Hemiptera (8) (Table 1). Among those ranked as high risk of endangerment, species richness is the greatest for gall formers (12 species), followed by foliage feeders (9), phloem/xylem feeders (9), sap feeders (8), and seed predators (5) (Fig. 2).

Fig. 1 Percentage of arthropod species in high (associated only with ash), high-moderate (ash and one other plant species), moderate (ash and two other plant species), and low (ash and \geq three other plant species) risk endangerment categories

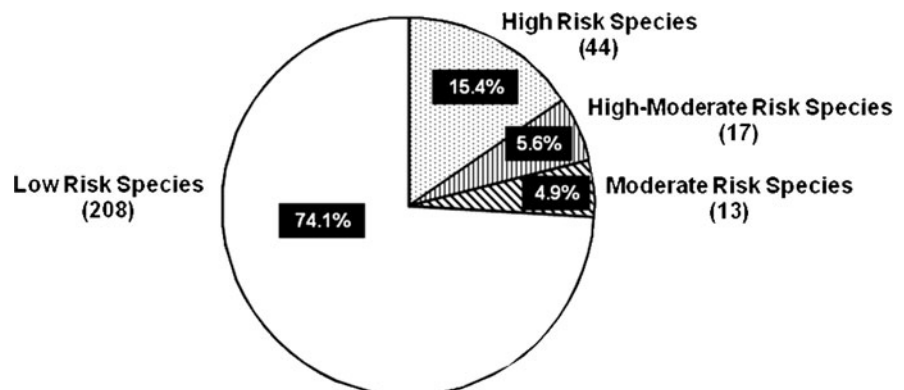


Table 1 Taxonomic distribution of arthropod species associated with ash in different endangerment risk categories resulting from mortality of ash caused by emerald ash borer

Arthropod taxa	Endangerment risk category				Total number of species
	High	High-moderate	Moderate	Low	
Arachnida	3	1	0	3	7
Coleoptera	9	6	3	58	76
Diptera	11	0	0	1	12
Hemiptera	8	5	4	21	38
Hymenoptera	4	1	0	4	9
Lepidoptera	9	4	6	118	137
Orthoptera	0	0	0	2	2
Thysanoptera	0	0	0	1	1
Total number of species	44	17	13	208	282

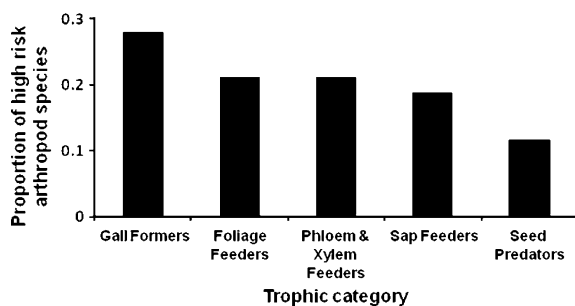


Fig. 2 Feeding guilds of monophagous arthropods in the high risk endangerment category

Discussion

Ash has a diverse associated faunal community comprising of 282 arthropod species. The 43 monophagous native species in the high risk category (*ca.* 15% of the total ash fauna) are clearly threatened by widespread ash mortality, as was predicted for seven moth species that fed exclusively on chestnut trees (Opler 1978). A current listing in the IUCN (International Union of Conservation of Nature) Red List database indicates that two of these chestnut moth species, *Ectodemia castaneae* (American chestnut moth) and *E. phleophaga* (Phleophagan chestnut moth), are considered regionally extinct in the USA (IUCN 2009a, b). High risk arthropods of ash include ash flower gall mite [*Aceria fraxiniflora* (Felt)], black-headed ash sawfly [*Tethida barda* (Say)], eastern ash bark beetle [*Hylesinus aculeatus* (Say)], and banded ash clearwing moth [*Podosesia aureocincta* Purrington and Nielsen] (Fig. 3). We also anticipate cascading effects on other affiliated species including fungal, bacterial, and invertebrate associates and parasites, as

well as vertebrate and invertebrate predators and mutualists (Purrington and Nielsen 1987; Langor and Hergert 1993; Koh et al. 2004).

The responses of monophagous arthropods to elimination of their host may differ depending upon their feeding guild (Fig. 4). Because the North American wood-borers and bark beetles that utilize ash colonize declining and dead ash trees, their populations will initially increase as EAB increases availability of suitable hosts. Furthermore, once these species reach a critical population threshold, some may be able to overwhelm host defenses through mass attacks. For example, in the mid-1980s in Alberta, a severe drought resulted in large-scale mortality of green ash trees; triggering outbreaks of the western ash bark beetle, *Hylesinus californicus* (Swaine), which were then able to mass-attack and successfully colonize live trees (Langor and Hergert 1993; Langor 1994). Such responses by members of the subcortical phloem/xylem feeding guild may accelerate the demise of ash trees in EAB-infested stands. Once ash trees are in an advanced stage of decay, the populations of wood-borers and bark beetles will decline. In contrast, we expect species in other feeding guilds to experience a more linear population decline as ash mortality increases, including seed-predators, folivores, sap-feeders, and gall-makers. Populations of seed-predators may be among the first to decline rapidly (Fig. 4), as seed production declines quickly in EAB-infested trees (*personal observation*).

As density of ash diminishes, polyphagous arthropods associated with ash may increase herbivory on their alternative hosts. For example, *Prociphilus americanus* (Walker), a sap-sucking aphid, uses ash

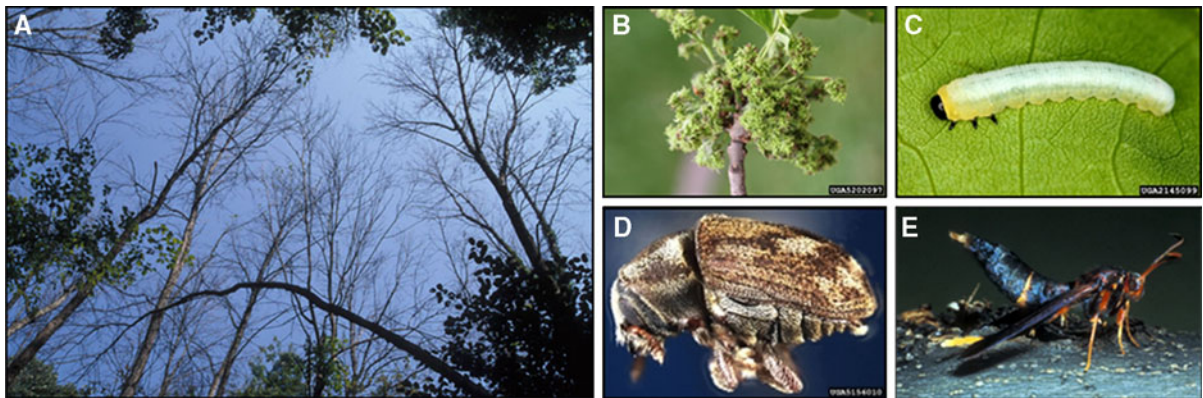


Fig. 3 Examples of arthropods at risk of extinction with the demise of North American ash (*Fraxinus* spp.) trees. **a** Dead ash trees in a central hardwood forest of southeastern Michigan. **b** Ash flower gall mite [*Aceria fraxiniflora* (Felt)]. Photo Credit: Steven Katovich, USDA Forest Service, Bugwood.org. **c** Blackheaded ash sawfly [*Tethida barda* (Say)].

Photo Credit: David Cappaert, Michigan State University, Bugwood.org. **d** Eastern ash bark beetle [*Hylesinus aculeatus* (Say)]. Photo Credit: J. R. Baker and S. B. Bambara, North Carolina State University, Bugwood.org. **e** Banded ash clearwing moth Purrington and Nielsen (*Podosesia aureocincta*). Photo Credit: D. G. Nielsen, The Ohio State University

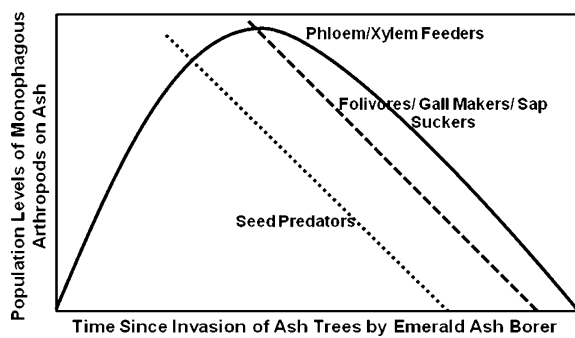


Fig. 4 Hypothetical responses by populations of monophagous arthropod species to widespread mortality of ash (*Fraxinus* spp.) due to emerald ash borer

and fir (*Abies* spp.) as primary and secondary hosts, respectively (DeAngelis 1998). On ash, it forms sexual colonies on the terminals, suckers, and base in early spring, and on fir, it forms asexual colonies on the roots in the summer (DeAngelis 1998). If ash is eliminated, then the asexual form on fir will likely continue to develop indefinitely and the loss of sexual form may decrease genetic variability within the species (DeAngelis 1998).

More than half of ash arthropod species in the high-moderate (biphagous species) and moderate (triphagous species) risk categories utilize exotic plants as alternate hosts, especially in the family Oleaceae. For example, the ash seed weevil (*Lignyodes* spp.) feeds also on the seeds of lilac (*Syringa*

spp.) (Solomon et al. 1993). Seed predation rates by these weevils on ash are high, exceeding 95% in some areas. As ash is decimated, their populations will decline precipitously, as they may be relegated to ornamental plantings of lilac (Wagner 2007), which no doubt is less common than ash.

Emerald ash borer (EAB) currently continues to spread unchecked (United States Government Accountability Office 2006), threatening endemic ash with extinction throughout North America and consequently, its associated native fauna. Much remains to be known about the natural history and ecology of arthropods and their affiliates and interactions associated with ash. This rich evolutionary diversity will be irreplaceably lost with the demise of North American ash species. Future studies should focus on quantifying effects of ash decline on natural history, population dynamics, ecological genetics, and community level interactions of arthropods associated with ash. Host shifts by ash arthropods to other tree species should also be monitored and documented. Research on the effects of gap formation due to ash mortality on non-target taxa, such as ground beetles, and the spread of invasive plants is already underway (e.g., Herms et al. 2008; KJK, Gandhi et al., unpublished data). Stronger quarantine measures, early detection, and prompt eradication will be necessary to prevent future threats to biodiversity posed by invasive species.

Acknowledgments We thank C. P. Herms and D. M. Lightle (The Ohio State University), and an anonymous reviewer for comments on a previous version of this manuscript. L. Ogden (The University of Georgia) assisted with formatting of the manuscript. Funding for this project was provided by the USDA Forest Service, Northern Research Station, Delaware, OH, and by State and Federal funds appropriated to the Ohio Agricultural Research and Development Center, The Ohio State University, and to the Daniel B. Warnell School of Forestry and Natural Resources, The University of Georgia.

References

- Baker JR, Cameron C, Horn KF et al (1980) Insect and related pests of shrubs: some important, common, and potential pests in the Southeastern United States. North Carolina Agricultural Extension Service. North Carolina State University
- Barnes BV (1976) Succession in deciduous swamp communities of southern Michigan formerly dominated by American elm. *Can J Bot* 54:19–24
- Berry RE (1998) Potato flea beetles, Coleoptera: Chrysomelidae, Western Potato Flea Beetle *Epitrix subcrinita*, Tuber Flea Beetle *Epitrix tuberis*. In: Berry RE (ed) Insects and mites of economic importance in the Northwest, 2nd edn. Oregon State University Book Stores, Inc, Corvallis
- Bright DE (1987) The metallic wood-boring beetles of Canada and Alaska, Coleoptera: Buprestidae. The insects and arachnids of Canada, part 15. Biosystematics Research Center, Ottawa
- Brook B, Sodhi NS, Ng PKL (2003) Catastrophic extinctions follow deforestation in Singapore. *Nature* 424:420–423
- Burns RM, Honkala BH (1990) Silvics of North America. USDA Forest Service, Timber Management Research Agriculture Handbook 654, Washington, DC
- Cappaert D, McCullough DG, Poland TM et al (2005) Emerald ash borer in North America: a research and regulatory challenge. *Am Entomol* 51:152–165
- Chapin FS III, Zavaleta ES, Eviner VT et al (2000) Consequences of changing biodiversity. *Nature* 405:234–242
- Covell CV Jr (2005) A field guide to moths of eastern North America. Virginia Museum of Natural History, Special Publication Number 12
- Craighead FC (1949) Insect enemies of eastern forests. USDA Miscellaneous Publication No. 657, Washington, DC
- Craighead FC, Middleton W (1930) An annotated list of the important North American forest insects. USDA Miscellaneous Publication No. 74, Washington, DC
- Cranshaw W (2004) Garden insects of North America: the ultimate guide to backyard bugs. Princeton University Press, New Jersey
- Cranshaw W (2005) Pigeon tremex. URL: <http://www.forestryimages.org/browse/detail.cfm?imgnum=1455080>
- Cranshaw W (2007) Grape mealybug. URL: <http://www.forestryimages.org/browse/detail.cfm?imgnum=1475041>
- DeAngelis J (1998) A conifer root aphid (*Prociphilus americanus* [Walker]) in true fir. URL: www.livingwithbugs.com/PDFFiles/root_aphid.PDF
- Drake CJ (1925) Concerning some Tingidae from the Gulf States (Heteroptera). *Flor Entomol* 9:36–39
- Dunn CP (1986) Shrub layer response to death of *Ulmus americana* in southeastern Wisconsin lowland forests. *Bull Torr Bot Club* 113:142–148
- Ebeling W (2002) Wood-destroying insects and fungi. URL: <http://entomology.ucr.edu/ebeling/ebel5-2.html#lyctus%20cavicollis>
- Edde PA, Phillips TW, Nansen C, Payton ME (2006) Flight activity of the lesser grain borer, *Rhyzopertha dominica* F. (Coleoptera: Bostrichidae), in relation to weather. *Environ Entomol* 25:616–624
- Faanes CA (1984) Wooded islands in a sea of prairie. *Am Birds* 38:3–6
- Felt EP (1918) Key to American insect galls. The University of the State of New York Bulletin, No. 200, Albany
- Fitzgerald TD, Simeone JB (1971) Serpentine miner *Marmara fraxinicola* (Lepidoptera: Gracillariidae) in stems of white ash. *Ann Entomol Soc Am* 64:770–773
- Froeschner RC (1944) Contributions to a synopsis of the Hemiptera of Missouri, Pt. III. Lygaeidae, Pyrrhocoridae, Piesmididae, Tingididae, Enicocephalidae, Phymatidae, Ploariidae, Reduviidae, Nabidae. *Am Midl Nat* 31:638–683
- Furniss RL, Carolin VM (1977) Western forest insects. Miscellaneous Publication No. 1339. USDA-Forest Service, Washington, DC
- Gandhi KJK, Herms DA (2009) Direct and indirect effects of alien insect herbivores on ecological processes and interactions in forests of eastern North America. *Biol Invasions* (in press)
- Gandhi KJK, Smith A, Long RA et al (2007) Patterns of emerald ash borer induced ash decline and mortality in the forests of southeastern Michigan. In: Mastro V, Reardon R, Parra G (eds) Emerald Ash Borer and Asian Longhorned Beetle Research and Development Review Meeting, Cincinnati October 29–November 2, 2006, pp 26–27. USDA Forest Service Forest Health Technology Enterprise Team FHTET-2007-04, 141 pp
- Gandhi KJK, Smith A, Long RA et al (2008) Three-year progression of emerald ash borer induced ash decline and mortality in the forests of southeastern Michigan. In: Mastro V, Lance D, Reardon R, Parra G (eds) Proceedings of the Emerald ash borer and Asian longhorned beetle research and technology development meeting, Pittsburgh, October 23–24, 2007, p 27. USDA Forest Health Technology Enterprise Team, FHTET-2008-07, 123 pp
- Griffith DM, DiGiovanni DM, Witzel TL et al (1993) Forest statistics for Ohio, 1991. USDA Forest Service, Northeastern Forest Experiment Station, Resource Bulletin NE-128
- Haack RA, Jendek E, Liu H et al (2002) The emerald ash borer: a new exotic forest pest in North America. *Newslett Mich Entomol Soc* 47:1–5
- Herms DA, Stone AK, Chatfield JA (2004) Emerald ash borer: the beginning of the end of ash in North America? In: Chatfield A, Draper EA, Mathers HM, Dyke DE, Bennett PJ, Boggs JF (eds) Ornamental plants: annual reports and research reviews 2003, Ohio Agriculture Research and Development Center, Ohio State University Extension Special Circular 193, Wooster

- Hermes DA, Gandhi KJK, Cardina J et al (2008) Impacts of emerald ash borer-induced gap formation on forest communities. In Mastro V, Lance D, Reardon R, Parra G (eds) Proceedings of the Emerald ash borer and Asian longhorned beetle research and technology development meeting, October 23–24, 2007, Pittsburgh, Pennsylvania, p 10. USDA Forest Health Technology Enterprise Team, FHT ET-2008-07, 123 pp
- Hiratsuka Y, Langor DW, Crane PE (1995) A field guide to forest insects and diseases of the prairie provinces. National Resources Canada, Canadian Forest Service, Special Report 3
- Hodges RW, Dominick T, Davis DR et al (1983) Check-list of the Lepidoptera of America North of Mexico. E.W. Classey Limited and The Wedge Entomological Research Foundation, Cambridge University Press, Great Britain
- Iftner DC, Shuey JA, Calhoun JV (1992) Butterflies and skippers of Ohio. The Ohio lepidopterists 9(1), Research Report No. 3, Columbus, Ohio
- IUCN (International Union for Conservation of Nature) (2009a) *Ectodemia castaneae* (American chestnut moth). URL: <http://www.iucnredlist.org/details/7028/0>
- IUCN (International Union for Conservation of Nature) (2009b) *Ectodemia phleophaga* (Pleophaga chestnut moth). URL: <http://www.iucnredlist.org/details/7029/0>
- Ives WGH, Wong HR (1988) Tree and shrub insects of the Prairie Provinces. Canadian Forest Service, Northern Forestry Center, Information Report NOR-X-292
- Johnson WT, Lyon HH (1988) Insects that feed on trees and shrubs, 2nd edn. Cornell University Press, Ithaca
- Keen FP (1952) Insect enemies of western forests. USDA Forest Service, Miscellaneous Publication No. 273
- Keen FP (1958) Cone and seed insects of western forest trees. USDA Forest Service, Technical Bulletin No. 1169
- Kennedy HE (1990) *Fraxinus pennsylvanica* Marsh. In: Burns RM, Honkala BH (eds) Silvics of North America: 1. Conifers; 2. Hardwoods. Agriculture Handbook 654, vol 2. U.S. Department of Agriculture, Forest Service, Washington, DC
- Knull JN (1932) Notes on Coleoptera—No. 3. Entomol News 43:62–67
- Koh LP, Dunn RR, Sodhi NS et al (2004) Species co-extinctions and the biodiversity crisis. Science 305:1632–1634
- Langor DW (1994) Western ash bark beetle. Canadian Forestry Service, Forestry Leaflet 24, Alberta
- Langor DW, Hergert CR (1993) Life history, behavior, and mortality of the Western ash bark beetle, *Hylesinus californicus* (Swaine) (Coleoptera: Scolytidae), in southern Alberta. Can Entomol 125:801–814
- Leininger TD, Solomon JD, Wilson AD et al (1999) Plant-hoppers, *Ormenoides venusta* (Melichar), *Anormenis septentrionalis* (Spinola). A guide to major insects, diseases, air pollution injury, and chemical injury of Sycamore. USDA Forest Service, Southern Research Station, General Technical Report, SRS-28, Asheville
- Liebholt AM, MacDonald WL, Bergdahl D et al (1995) Invasion by exotic forest pests: a threat to forest ecosystems. For Sci Monogr 30:1–49
- Lingafelter SW (2007) Illustrated key to the longhorned woodboring beetles of the eastern United States. The Coleopterists Society Special Publication No. 3, Nevada City
- Linsley EG (1962) The Cerambycidae of North America. Part III. Taxonomy and classification of the subfamily Cerambycinae, Tribes Osimini through Megaderini, vol 20. University of California Publications in Entomology, University of California Press, Berkeley and Los Angeles
- Linsley EG (1963) The Cerambycidae of North America. Part IV. Taxonomy and classification of the subfamily Cerambycinae, Tribes Elaphidionini through Rhinotragini, vol 21. University of California Publications in Entomology, University of California Press, Berkeley and Los Angeles
- Linsley EG (1964) The Cerambycidae of North America. Part V. Taxonomy and classification of the subfamily Cerambycinae, Tribes Callichromini through Ancylocerini, vol 22. University of California Publications in Entomology, University of California Press, Berkeley and Los Angeles
- Linsley EG, Chemsak JA (1972) The Cerambycidae of North America. Part VI, No. 1. Taxonomy and classification of the subfamily Lepturinae, vol 69. University of California Publications in Entomology, University of California Press, Berkeley and Los Angeles
- Linsley EG, Chemsak JA (1984) The Cerambycidae of North America. Part VII, No. 1. Taxonomy and classification of the subfamily Lamiinae, Tribes Parmenini through Acanthoderini, vol 102. University of California Publications in Entomology, University of California Press, Berkeley and Los Angeles
- Linsley EG, Chemsak JA (1995) The Cerambycidae of North America. Part VII, No. 2. Taxonomy and classification of the subfamily Lamiinae, Tribes Acanthocinini through Hemilophini, vol 114. University of California Publications in Entomology, University of California Press, Berkeley and Los Angeles
- Lovett GM, Canham CD, Arthur MA et al (2006) Forest ecosystem responses to exotic pests and pathogens in eastern North America. Bioscience 56:395–405
- Martin AC, Zim HS, Nelson AL (1951) American wildlife and plants: a guide to wildlife food habits. Dover Publications, Inc., New York
- Mattson WJ (1997) Exotic insects in North American forests: ecological systems forever altered. In: Britton KO (ed) Proceedings of the conference on exotic pests of eastern forests. USDA Forest Service and Tennessee Exotic Pest Plant Council, Nashville
- McCullough DG, Work TT, Cavey JF, Liebhold AM, Marshall D (2006) Interceptions at nonindigenous plant pests at US ports of entry and border crossings over a 17-year period. Biol Invasions 8:611–630
- Opler PA (1978) Insects of American chestnut: possible importance and conservation concern. In: McDonald J (ed) The American chestnut symposium. West Virginia University Press, Morgantown
- Opler PA, Malikul V (1998) Eastern butterflies. The Peterson field guide series. Houghton Mifflin Company, USA
- Oregon State University (2006) Western spotted cucumber beetle. URL: http://oregonstate.edu/dept/nurspest/western_spotted_cucumber_beetle.htm
- Pohl GR, Saunders C, Barr WB et al (2004) *Caloptilia fraxinella* (Lepidoptera: Gracillariidae), a new pest of ash (Oleaceae: *Fraxinus* spp.) on the Canadian prairies. Can Entomol 136:733–736

- Poland TM, McCullough DG (2006) Emerald ash borer: invasion of urban forest and the threat to North America's ash resource. *J For* 104:118–124
- Purrington FF, Nielsen DG (1987) New host records of parasitic Hymenoptera in clearwing moths (Lepidoptera: Sesiidae). *Great Lakes Entomol* 20:141–142
- Rebek EJ, Herms DA, Smitley DR (2008) Interspecific variation in resistance to emerald ash borer (Coleoptera: Buprestidae) among North American and Asian ash (*Fraxinus* spp.). *Environ Entomol* 37:242–246
- Reiners WA, Reiners NM (1970) Energy and nutrient dynamics of forest floors in three Minnesota forests. *J Ecol* 58:497–579
- Riley EG, Flowers RW (1997) Family Chrysomelidae. The leaf beetles. URL: <http://www.fsca-dpi.org/Coleoptera/Mike/chryso.htm>
- Rings RW, Downer RA (2001) The Lepidoptera of Wayne County, Ohio. The Ohio State University, Ohio Agricultural Research and Development Center, Research Bulletin No. 1192
- Robinson GS, Ackery PR, Kitching IJ et al (2007) HOSTS—a database of the world's Lepidopteran hostplants. URL: <http://www.nhm.ac.uk/research-curation/projects/hostplants/>
- Smith A (2006) Effects of community structure on forest susceptibility and response to the emerald ash borer invasion of the Huron River watershed in southeast Michigan. M.S. Thesis, The Ohio State University, Columbus
- Smock LA, MacGregor CM (1988) Impact of the American chestnut blight on aquatic shredding macroinvertebrates. *J N Am Benth Soc* 7:212–221
- Solomon JD (1995) Guide to insect borers in North American broadleaf trees and shrubs. USDA Forest Service, Agriculture Handbook AH-706
- Solomon JD, Leininger TD, Wilson AD et al (1993) Ash pests: a guide to major insects, diseases, air pollution injury, and chemical injury. USDA Forest Service, General Technical Report SO-96
- Tree Fruit Research and Extension Center (Unknown Date) Grape mealybug. URL: http://entomology.tfrec.wsu.edu/parent/Insect_Galleries/pest_gallery.htm
- United States Government Accountability Office (2006) Invasive forest pests: recent infestations and continued vulnerabilities at ports of entry place U.S. forests at risk. Testimony before the Subcommittee on Forests and Forest Health, Committee on Resources, House of Representatives. Report Number: GAO-06-871T
- Usinger RL (1945) Biology and control of ash plant bugs in California. *J Econ Entomol* 38:585–591
- Usinger RL (1946) Biology and control of the ash lace bug, *Leptoypha minor*. *J Econ Entomol* 39:286–289
- Virginia Cooperative Extension (1996) Fungus Gnat. Virginia State University. <http://www.ext.vt.edu/departments/entomology/factsheets/fungusgn.html>
- Vitousek PM, Mooney HA, Lubchenco J, Melillo JM (1997) Human domination of earth's ecosystems. *Science* 277:94–499
- Vlasak J, Vlasakova K (2002) Records of Cerambycidae (Coleoptera) in Massachusetts with notes on larval hosts. *Coleop Bull* 56:203–219
- Wagner DL (2005) Caterpillars of eastern North America: a guide to identification and natural history. Princeton field guides. Princeton University Press, Singapore
- Wagner DL (2007) Emerald ash borer threatens ash-feeding Lepidoptera. *News Lepid Soc* 49:10–11
- Wagner DL, Giles V, Reardon RC et al (1997) Caterpillars of eastern forests. USDA Forest Service Forest Health Technology Enterprise Team, Technology Transfer, FHTET-96-34, Morgantown
- Wallander E (2008) Systematics of *Fraxinus* (Oleaceae) and evolution of dioecy. *Plant Syst Evol* 273:25–49
- Weber BC, Anderson RL, Hoffard W (Unknown Date) How to diagnose black walnut damage. North Central Forest Experiment Station, Forest Service, U.S. Department of Agriculture, USDA General Technical Report NC-57. URL: http://www.na.fs.fed.us/spfo/pubs/howtos/ht_walnut/mites.htm
- Wheeler AG (Unknown Date) Forestiera lace bugs. URL: www.dnr.state.sc.us/cwcs/pdf/LaceBugs.pdf
- Williams DJ (2006) Biology of the spiny ash sawfly, *Eupareophora parca* (Hymenoptera: Tenthredinidae: Blennocampinae), in Edmonton Alberta. *Can Entomol* 139:269–277
- Wood SL (1982) The bark and ambrosia beetles of North and Central America (Coleoptera: Scolytidae), a taxonomic monograph. Great Basin Naturalist Memoirs No. 6
- Yanega D (1996) Field guide to northeastern longhorned beetles (Coleoptera: Cerambycidae). Illinois Natural History Survey Manual 6