

IRELAND'S electrical

A TRADE MAGAZINE FOR INDUSTRY PROFESSIONALS IN IRELAND

ISSUE 71 - FEB/MAR 2019

1919

Electrical Accessories

Anti-Flash

NEW DESIGNS LOWER PRICES

BRITAIN'S PREMIER UNIT

M.K. ELECTRIC LTD.

The New MK Switch Panel May

MK LASTING CONNECTIONS by Honeywell

100 YEARS

MK by Honeywell

CELEBRATING 100 MILLION SOCKETS

Made GREAT In Britain

BACTERIA-FREE ZONE

STAY CONNECTED

2019

Loop test with confidence



**The all-in-one installation tester
with confidence built-in**

MFT1741

With the newest, patented pending algorithm for earth loop impedance testing, Megger introduce the MFT1741.

- Fast, repeatable 3-wire no-trip loop test results on normal circuits
- 3-wire loop test results from noisy circuits that are repeatable and in which you can have confidence.
- Built-in confidence meter that indicates the reliance you can place on your loop measurement
- Results unaffected by RCD or RCBO impedance

These new features combined with those of the well liked MFT1701 series of toughness, ease-of-use and reliability make the MFT1741 a very attractive package.

To find out more scan the QR code
or call 01304 502 102



Issue 71 - Feb/Mar 2019

In this issue...



48



11



14


ELECTEX
 TRADE EVENT CORK 2019
NEW FOR 2019
CORK

PAGE 18

 NORTHERN
 IRELAND'S
electrical
 AWARDS

**ENTER
 NOW**

 PAGE
24


News & Views

- 4 **Charity partner**
Cancer Focus is WSM's charity partner.
- 11 **Support for Sean Cox**
Fundraising events across the industry.
- 12 **Irish Joint Venture**
Designer Group and Sisk join forces.
- 48 **Demesne Electrical super-branch**
Expansion in Dungannon leads to jobs boost.

Products

- 23 **New GES Group partnerships**
Distributor for Leroy-Somer.
- 30 **Wireless kinetic switches**
Battery and wire free solutions.
- 35 **EV charging opportunities**
Darkin EV offers consultancy service.
- 69 **AP Haslam expands service**
Perforex BC 1007 adds to capabilities.

In Focus

- 16 **100 years of MK**
Looking back on a century of success.
- 9 **New regulations**
Consultation on new Irish Wiring Rules.
- 28 **Holy Family PS, Rathcoole**
Case study on Kelliher's and Excel Electrical.
- 51 **Wiring**
Focus on the new regulations and products. what it's about.

THE TEAM: Managing Director **Karen McAvoy**
 Publication & Events Manager **Janice Uprichard**
 Managing Editor, Print & Digital **Adam Hassin**
 RoI Correspondent **Denise Maguire**
 Advertising **Karen Jess, Anita Murray**
 Digital Executive **Sarah Walker**
 Head Designer **Julie Anne Guiney** | Design & Digital **Jo Wilson**
 Photography **Gordon McAvoy** | Printed by **W&G Baird**

CONTACT US:

The Forge, 13b Lisburn Road,
 Moira, Co. Armagh BT67 0JR

T: Moira: 028 9261 2990

T: Dublin: 01 696 8319

E: electrical@kmp ltd.co.uk

www.elec magazine.com

FOLLOW US ON:

Reproduction of whole or in part of this publication, without prior permission from Karen McAvoy Publishing Ltd, is strictly prohibited.



The team from Walter S Mercer who are set to tackle Ben Nevis in aid of Cancer Focus NI - (from left) Ken Gibbons, John Auld, David Keery and Gary Thompson.

Walter Mercer announces charity partner for 2019

Electrical wholesaler, Walter S Mercer, Belfast, has teamed up with Cancer Focus Northern Ireland for a year-long charity partnership.

John Auld, Branch Manager, said, "We are delighted to announce this partnership and to be involved in supporting the valuable work of Cancer Focus NI. We are proud of our strong community ties and the staff are looking forward to taking part in fundraising activities and raising awareness of cancer." Louise Greer, Corporate Fundraising Officer at Cancer

Focus NI, added, "We're thrilled Walter S Mercer has chosen us as their new charity partner - it's an honour to be associated with such a well-known firm."

During 2019 staff will be taking part in a daring charity abseil, one fearless employee will be braving the shave, the Walter S Mercer Mountaineers will be taking on Ben Nevis and staff will be hopping on the bike and cycling in their trade counter spinathon. For anyone wishing to support the staff of Walter Mercer, donations can

be made through www.justgiving.com/fundraising/waltermercer

Walter Mercer has already started to gather the funds, kicking off the partnership with a Christmas Raffle prize, adding £174 to the fundraising pot.

To find out more about the Cancer Focus NI, visit www.cancerfocusni.org



Walter S Mercer has selected Cancer Focus NI as this year's charity partner - launching the fundraising campaign are (from left) Ken Gibbons, Chris Morrow and John Auld.



How to get Brexit ready

As the UK's EU withdrawal edges ever closer, both the UK and Irish Governments have issued advice to business on how best to prepare. For companies in Northern Ireland, the website www.euexitbusiness.campaign.gov.uk outlines information ranging from employing EU citizens; importing and exporting; Public Sector and regulations and standards. In Ireland, the website www.dfa.ie/brexit outlines what measures are being taken to get Ireland Brexit ready. As well as advice and guidance on a range of issues, the website also outlines the resources and financial support available for all Government departments and agencies to help businesses prepare for Brexit.



BLUES IN BELFAST

The Blues Brothers rocked the Electric Ball in Belfast, hosted by the Electrical Industries Charity Northern Ireland Branch. See more pictures on our Facebook page @electricalmagazine

The Way to Connect!

EASY
WAGO's 221 Series provides tool-free connections for all conductor types. An easy-to-use and space-saving design makes wiring child's play.

FAST
WAGO's 221 Lever Connector also connects flexible conductors quickly and easily - without tools. Pull lever up, insert stripped conductor and push lever back down.

SAFE
See at a glance if all conductors are properly connected: WAGO's highly transparent lever connectors provide error-free connection of all conductors.

www.wago.com/221

YOUR ELECTRICAL EXPERTS

CEF is the UK and Ireland's expert supplier of electrical products and services. Through our network of stores we offer our customers a huge range of high quality electrical items, from industry leading brands with great value alternatives available.

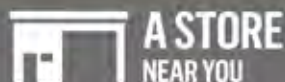


CEF NORTHERN IRELAND STORE LOCATIONS

- | | | |
|--|---|--|
| 1. CEF BALLYMENA
02825 658 526
sales.ballymena@cef.co.uk | 2. CEF BANGOR NI
02891 456 880
sales.bangorni@cef.co.uk | 3. CEF BELFAST EAST
02890 732 631
sales.belfasteast@cef.co.uk |
| 4. CEF BELFAST NORTH
02890 371 007
sales.belfastnorth@cef.co.uk | 5. CEF COLERAINE
02870 352 411
sales.coleraine@cef.co.uk | 6. CEF CRAIGAVON
02838 332 789
sales.craigavon@cef.co.uk |
| 7. CEF LISBURN
02892 670 555
sales.lisburn@cef.co.uk | 8. CEF LONDONDERRY
02871 266 288
sales.londonderry@cef.co.uk | 9. CEF NEWRY
02830 250 555
sales.newry@cef.co.uk |

CEF IRELAND STORE LOCATIONS

- | | | |
|---|---|--|
| 10. CEF CASTLEBAR
0949 027 196
sales.castlebar@cefttd.ie | 11. CEF CORK
0214 321 820
sales.cork@cefttd.ie | 12. CEF DUBLIN CITY CENTRE
018 788 180
sales.dublincitycentre@cefttd.ie |
| 13. CEF DUNDALK
0429 327 305
sales.dundalk@cefttd.ie | 14. CEF FINGLAS
018 239 000
sales.finglas@cefttd.ie | 15. CEF LETTERKENNY
0749 106 100
sales.letterkenny@cefttd.ie |
| 16. CEF LIMERICK
0614 233 10
sales.limerick@cefttd.ie | 17. CEF MULLINGAR
0449 385 515
sales.mullingar@cefttd.ie | 18. CEF NAAS
045 898 099
sales.naas@cefttd.ie |
| 19. CEF RED COW
014 242 042
sales.redcow@cefttd.ie | 20. CEF SLIGO
0719 151 820
sales.sligo@cefttd.ie | 21. CEF TRALEE
0667 103 955
sales.tralee@cefttd.ie |
| 22. CEF WATERFORD
051 372 825
sales.waterford@cefttd.ie | | |



**A STORE
NEAR YOU**



**FREE TEA,
COFFEE AND WIFI**



**WE STOCK
LEADING BRANDS**



**FREE DELIVERY
NO MINIMUM CHARGES**



**YOUR
ELECTRICAL
EXPERTS**

**For great deals visit
your local store**

IET URGES ELECTRICAL INDUSTRY TO ENSURE ALL NEW INSTALLATIONS COMPLY WITH UPDATED WIRING REGULATIONS...

18th Edition now in force

The 18th Edition of the IET Wiring Regulations is now in force, meaning that all electrical contractors must ensure they are up to date with the new requirements for BS 7671:2018. From January 1, 2019 all new electrical installations must be designed to comply with the standards and requirements set out in BS 7671:2018. Although not compulsory, electrical professionals can leave themselves open to legal action if the work that they carry out does not meet the necessary industry requirements.

BS 7671 focuses on improving the safety of electrical installations, minimising the risk of fires resulting from unsafe wiring, and standardising electrical installation design.

JPEL/64 (the national Wiring Regulations committee) has a responsibility for keeping these standards up to date in line with new and emerging technologies and industry developments, which are vast and fast moving.

A number of new Regulations, or changes to existing Regulations were carefully considered, put out for public consultation, and debated within the committee for the 18th Edition. This includes new and amended requirements and recommendations around the use of Arc Fault Detection Devices (AFDDs), Surge Protection Devices (SPDs), methods of support of wiring systems and earthing arrangements for Electric Vehicle Charging Equipment, among others.

Mark Coles, Head of Technical Regulations at the IET, said, "The 18th Edition of the IET Wiring Regulations contains some significant changes to the way all electrical professionals are required



to carry out their work in order to safeguard themselves and the public. With this in mind, it is essential that all electrical professionals ensure that they are up to speed with the new requirements."

To help industry get up to date, the IET offers a dedicated course on their online training resource, the IET Academy, delivering comprehensive training for City & Guild's 2382:18 qualification.

The IET Academy provides the only course for 2382 that has been prepared by the IET, which jointly publishes the IET Wiring Regulations with BSI. The authors have been carefully selected for their industry experience and knowledge of BS 7671. It is also the only online course to be endorsed by City & Guilds for this qualification.

The course, which is suitable for anyone needing working knowledge of BS 7671, including electrical installers, designers, specifiers and those working in the inspection and testing of electrical equipment, will also fully prepare electricians for the City & Guilds 2382:18 exam.

The IET also offers BS 7671 and a range of expert guidance, both in print and

digital versions to help you get up to date ahead of the 18th Edition coming into effect.

Find out more at www.theiet.org/18th-resources-pr

Key changes

Some of the key changes to be aware of in the 18th Edition include:

- The requirements on SPD (surge protection device) consideration and usage have been revised.
- There are new requirements for AFDDs (Arc Fault Detection Devices) have been considered.
- Requirements for cabling support and fixings have changed.
- More emphasis has been placed on protective devices being selected properly and working together in a system.
- There have been some changes applying to work within special locations.
- There is a new appendix on energy efficiency.

- High Power Multi-Line Integrated EPSTAR 2835 SMD Chip
- **Unique - Slim**, stylish shell design
- **NEMA SENSOR INCLUDED**
- High quality powder-coated external finish
- Low power consumption
- Long Lifespan of over 35K hours - **L70 Rated**
- No start-up time, no flickering
- DOB (Driver on Board)
- **Stainless-steel**, non-corrosive screws
- Beam Angle of 60° x 110° - Reduced glare
- Causes no electromagnetic interference (RF, EMC)
- Complete with **Corner/Wall Bracket**
- **Pole-top** bracket available
- Available in **4000K and 2000K (SON Replacement)**
- **65mm outreach entry**

SLV50 / SLV100 / SLV150 LED STREET LAMP SERIES

GET THE RIGHT VIBE

VIBE Lumeno LED Street Light is a compact, lightweight yet powerful solution for outdoor illumination. It adopts cost effective DOB design, with dedicated build in driver. With no start up time it has wide compatibility with photocells, microwave or motion sensors. Slim Line wing-design body, made out of high quality anodised aluminium with powder coated surface. Lamp's body has been designed with a side entry for street poles, taking 45mm or 65mm Ø outreach. Lumeno VIBE street lamps are available in **2000K light colour (AMBER)**, dedicated to sensitive areas where light pollution is considered. VIBE Street Light has a versatile mounting options as it can be mounted on a street light poles with an extra angle adapter, alternatively walls or corners using bracket supplied-complete with the lamp. Lumeno LED Street Light offers a wide field of applications including both domestic and commercial sites. As a mini street light VIBE can be a great accessory as an amenity light for a private house as well as for lighting up driveways, sheds or warehouses.

TRIPLEE REGISTERED



VIBE

STREET LAMP SERIES BY: LUMENO

Available models :

Model number	Colour Temperature (K)	Colour	SENSOR	Brightness	TripleE
LM-SLV50	4000K	Natural White	NEMA PHOTOCELL	4153 LM	LIG80419
LM-SLV50-SON	2000K	Amber White (SON)		3274 LM	N/A
LM-SLV100	4000K	Natural White		10023 LM	LIG80420
LM-SLV100-SON	2000K	Amber White (SON)		8210 LM	N/A
LM-SLV150	4000K	Natural White		15046 LM	N/A
LM-SLV150-SON	2000K	Amber White (SON)		13200 LM	N/A

PROJECT CO-ORDINATOR PROJECT AND COMMISSIONING SUPPORT

BASED IN DUBLIN OFFICE

Due to continued growth, Core Solutions are looking for a competent Project Co-ordinator to undertake a variety of administrative and programme coordination tasks. The successful candidate is to provide the highest level of support to our customer base and oversee the smooth running of projects, from start to finish (tender to commissioning), both in Northern Ireland and the Republic of Ireland.

THE ROLE

- Maintaining and monitoring project plans, project schedules, work hours, budgets and expenditures.
- Organising, attending and participating in stakeholder meetings.
- Documenting and following up on important actions and decisions from meetings.
- Preparing necessary presentation materials for meetings.
- Ensuring project deadlines are met.
- Determining project changes.
- Providing administrative support as needed.
- Undertaking project tasks as required.
- Developing project strategies.
- Ensuring projects adhere to frameworks and all documentation is maintained appropriately for each project.
- Assess project risks and issues and provide solutions where applicable.
- Ensure stakeholder views are managed towards the best solution.
- Chair and/or facilitate meetings where appropriate and distribute minutes to all project team members.
- Create a project management calendar for fulfilling each goal and objective.
- Organising commission of our system solutions with both the customer and the commission team.
- Prepare all administration information with regards to commissioning.

CRITERIA

- Two year experience in related field.
- Exceptional verbal, written and presentation skills.
- Ability to work effectively both independently and as part of a team.
- Experience using computers for a variety of tasks.
- Competency in Microsoft applications including Word, Excel, and Outlook.
- Knowledge file management and other administrative procedures.
- Ability to work on tight deadlines.

RENUMERATION PACKAGE DEPENDING ON EXPERIENCE.

ELECTRICAL SUPPORT ENGINEER MODULAR WIRING AND LIGHTING CONTROL SYSTEMS

BASED IN DUBLIN OFFICE

Project Division of the Core Electrical Group, Core Solutions require a Support Engineer specialised in Modular Wiring and Lighting Control Systems to join their growing team. The successful candidate is to provide technical expertise for our customer base, both in Northern Ireland and the Republic of Ireland, and support project specification and commissioning of our product and system lines.

THE ROLE

- Offering the highest level of support and working alongside the Modular Wiring and Lighting Control Product Manager, to advise and support Specification Engineers and Electrical Contractors on the correct products and best value solutions to be used in specific electrical installations.
- To prepare quotations based on the interpretation of information given within the tendering process of any given project. Offering market leading solutions which show the USPs of the Core Modular Wiring, Lighting Control and Core KNX ranges.
- Working closely with our manufacturing partners, to maintain an up-to-date knowledge of market trends and pricing structures, while taking ownership of the supply process and maintaining a stock profile.
- To liaise and support the external project sales team and our systems company Built Enviro.

CRITERIA

- The ability to work in a team and interface with other departments to ensure an efficient and comprehensive service to the customer base.
- The ability to interpret technical drawings and specification information as well as convert this information into product and system solutions.
- Experience within the Lighting Control / Modular Wiring market dealing with consultant engineers, electrical contractors and end users.
- Essential technical qualification and/or experience
- Exceptional verbal, written and presentation skills
- Ability to work effectively both independently and as part of a team
- Experience using computers for a variety of tasks
- Competency in Microsoft applications including Word, Excel, and Outlook
- Ability to work on tight deadlines
- Knowledge file management and other administrative procedures
- AutoCad experience would be of benefit

RENUMERATION PACKAGE DEPENDING ON EXPERIENCE.

TO APPLY PLEASE SEND AN INTRODUCTORY EMAIL AND CV TO JMCDONAGH@COREELECTRICAL.IE



MAKE SURE YOU HAVE YOUR SAY ON THE PROPOSED NATIONAL WIRING RULES...

Improving safety across the industry

The National Standards Authority of Ireland (NSAI) is urging the more than 4,000 registered electrical contractors in Ireland, and all those working in the electrotechnical sector, to have their say on the proposed National Wiring Rules.

The new rules have been developed through the National Standards Authority of Ireland by industry experts who sit on the NSAI's Electro Technical Committee (ETC TC2) 'Electrical Installations'. The National Wiring Rules are essential for electricians, inspectors and regulators as they specify the electrical installation safety requirements for all premises in Ireland.

Yvonne Wylde, Technical Manager at the NSAI, said the rules have been updated to reflect best practice and changes to international standards.

"It's been over 10 years since the last set of rules was published in Ireland, and there have been significant developments since then. The regulations rely on the Wiring Rules for implementation and so it is critical that they are kept up to date."

The draft revisions improve safeguards and bring industry requirements in line with technical developments and best practice in Europe.

The NSAI's Standards Officer, Stewart Hickey said the revisions, if adopted, will significantly improve safety for both electrical installers and home-owners.

"Some of the key changes proposed in the new rules are that Residual Current Devices (RCDs) will now be required to be installed on lighting circuits in domestic premises and Arc Fault Detection Devices (AFDDs) will now be recommended for circuits installed in locations with particular risk, such as in premises with sleeping accommodation or buildings made of combustible construction materials such as wooden buildings.

"There will be a series of technical seminars held across the country later in 2019 to outline the key changes and what they mean for electricians. The dates and locations of these seminars will be available on our website when the consultation period comes to an end."

Electricians, home-owners and all interested parties have until February 28, 2019 to have their say on the New National Wiring Rules. It is expected the standard will be published by mid 2019.

To read the draft I.S.10101:20xx Standard and submit your comments, log onto "Your Standards, Your Say" web portal through the NSAI website at www.NSAInep.ie

Have your say

The Association of Electrical Wholesalers in Ireland (AEW) is encouraging members to put their views forward on the proposed National Wiring Rules.

Phil O'Shea, Chairman of the AEW, which represents some of the biggest wholesalers in Ireland, said, "We have been highlighting to our members that this consultation process is taking place and informing them how to put forward their views. The AEW will also be consulting with members and putting forward a submission on behalf of the association.

"It has been 10 years since the electrical industry has had a chance to have their say on wiring rules so we feel it is vital that everyone takes the time to look over this document."

In addition to the National Wiring Rules, the AEW has been working closely with WEEE Ireland to raise awareness of the electrical waste scheme.

"This is another important area and we have been working in partnership with WEEE Ireland and our members to promote the importance of recycling electrical waste and how our industry can play a vital role in this."



Electrical & Lighting Products



Product Brochure
Issue One
Out Now!



Get Switched On

Tel: +44 (0)161 745 7777 Fax: +44 (0)161 745 2777 Email: sales@selectricuk.co.uk Web: www.selectricuk.co.uk

FuseBox®

HARPERS
CABLE SPECIALISTS

T: 02890 792 155

E: INFO@CABLESPECIALISTS.CO.UK

2019 CIRCUIT PROTECTION

18TH EDITION SOLUTIONS

- RCDs TYPE A
- RCBOs TYPE A
- SURGE PROTECTION DEVICES SPD



www.cpelectric.co.uk

FuseBox®

T: 01563 533 554

E: SALES@CPELECTRIC.CO.UK

THE ELECTRICAL INDUSTRY RALLIES ROUND TO HELP RAISE FUNDS FOR PRECISION CABLES DIRECTOR...

Nationwide coffee morning for Seán Cox

The electrical industry across Ireland has hosted a joint coffee morning to raise money for Seán Cox.

The 53-year-old Director of Precision Cables was a victim of a vicious and unprovoked attack before a Liverpool game in April, 2018, which left him with life-changing injuries. While he has been making small but significant steps forward, his recovery is going to be a long and difficult one, requiring ongoing and intensive long-term care and support which will necessitate significant funding over many years.

The SupportSeán campaign has already gained widespread support, and the recent nationwide coffee morning is just one of a range of fundraising events. A spokesperson for Precision Cables said, "The response was overwhelming, showing comradeship, solidarity, team spirit, outstanding individual acts and empathy that make us so proud to be part of the electrical industry."

LIVERPOOL LEGENDS

Liverpool Football Club will host a special legends game at the Aviva Stadium in Dublin on Friday, April 12, in aid of the SupportSeán campaign.

A squad of former Reds will line up against an Ireland XI team, with proceeds raised from the match donated to the Sean Cox Rehabilitation Trust.



Colleagues of Seán Cox at Precision Cables who organised the nationwide coffee morning in aid of the Seán Cox Rehabilitation Trust.



Seán's wife, Martina Cox, said, "Sean has been supporting Liverpool all of his life and to have this match in Dublin in his name will be a special day. It's going to be a very long and slow process for Sean's recovery, and I'd like to thank the overwhelming support Liverpool fans have shown. "I'd also like to thank the club, players and those former players who will be playing in the match

for their continued support. We are also working with LFC on a number of other initiatives that will help to support Sean's care in the years ahead." Full details of the game, including the squads and ticket sales, along with the gala dinner, will be announced in due course. *To donate to the fund or for details of the latest events, visit www.supportsean.com*





Wireless & Hybrid Fire Detection Systems

Solutions for the built environment

Wireless solutions protect entire buildings without the need for any fire rated cable or containment. Hybrid solutions retain existing wired fire alarm systems and add wireless devices to achieve compliance.

Established in 2000, we deliver wireless solutions and unrivalled technical support to customers throughout Ireland.

Survey | Design | Supply | Support

t: +353 1 404 5142

e: info@vrf.ie

www.vrf.ie



GloLine LED Battens



Selectric GloLine65 Non-Corrosive LED Fittings



Selectric introduces our GloLine LED Battens and GloLine65 Non-Corrosive LED Fittings, ideal for any domestic or commercial indoor environment.

50,000hrs guarantee

Up to 5 Years warranty

4000K colour temp

2ft, 4ft, 5ft, 6ft available lengths

1276lm to 5820lm luminous flux

Emergency Options on 5ft & 6ft models

Easy Access quick installation

Direct Replacement for fluorescent fittings

55% Energy Saving vs traditional switchstart



Up to 30,000hrs life span

3 Year Warranty on all models

5000K colour temp

2ft, 4ft, 5ft, 6ft available lengths

1100lm to 8800lm luminous flux

Emergency Options on 5ft & 6ft models

IP65 Rated water resistant

Direct Replacement for fluorescent fittings

Energy Saving vs traditional switchstart



Get Switched On

Tel: +44 (0)161 745 7777 Fax: +44 (0)161 745 2777 Email: sales@selectricuk.co.uk Web: www.selectricuk.co.uk

DESIGNER GROUP AND SISK TO ESTABLISH NEW JV

Electrical and mechanical firm Designer Group and construction company Sisk have announced that Sisk is to acquire a 50% holding in Designer Group's facilities management business.

The FM business is a subsidiary of Designer Group and a supplier of integrated property facility management services to organisations across both public and private sectors in Ireland.

Following completion of the transaction, a new brand and identity for the business will be



established in early 2019. The joint venture business will be positioned to deliver a fully integrated facility management service to both the customer bases of Sisk and Designer Group and to new customers. Michael Stone, Chief Executive of Designer Group, said, "This partnership and joint venture with Sisk will create a business that delivers hard facility

services of fabric maintenance and engineering services, including minor works, to clients throughout the Republic of Ireland."

www.designergrp.com

PUBLIC SECTOR MAKES ENERGY SAVINGS OF €191M

Public bodies in Ireland continue to reduce energy usage by installing energy-efficient technology such as LED lighting.

Minister for Communications, Climate Action and the Environment, Richard Bruton (below), recently published a report by SEAI on the energy efficiency of all public bodies. The report evaluated 331 public bodies and 2,279 schools, representing an annual energy spend of €608million and showed that public sector bodies collectively saved €191million in 2017. Since 2009, public sector bodies have made over €1billion in energy savings.

Dublin City University achieved primary energy savings of over 2.8 GWh in 2017 compared to 2016. New high efficiency boilers were installed in All Hallows Campus, delivering 59% more savings than predicted. An upgrade of the existing internal and external lighting in the multi-storey car park to LEDs, together with occupancy and daylight sensors, have also exceeded predicted savings by 19%. www.seai.ie



LIDL IRELAND INVESTS €1M IN SOLAR PANELS

Lidl Ireland is set to invest €1 million in the installation of solar panels at eight new and reconstructed stores due to open by the end of 2019. Solar panels have already been installed at the recently-opened Nenagh store, which will produce 120,000 kilowatt hours of energy annually. This is equivalent to meeting the electricity requirements of 28 homes and will reduce the store's carbon output by some 40 tonnes annually. The store will also reportedly feature two electric

vehicle charging points which customers can use for free while shopping in-store. Other initiatives include a high performance glass-fronted façade to maximise natural daylight entering the building; sensor-controlled exterior sun blinds to reduce unwanted heat from the sun; waste heat recovery ventilation systems and LED lighting; high insulation with external cladding; and lighting sensors to conserve energy where it is not required.



KEEP UP-TO-DATE
LOCAL NEWS ONLINE
www.elec magazine.com



VITAL FUNDS HAVE BEEN RAISED TO AID THE RECOVERY OF PRECISION CABLES DIRECTOR SEÁN COX...

IEBA raises €32,250 for Support Seán campaign

The Irish Electrical Benevolent Association (IEBA) had a full house for its annual Winter Ball, held late last year.

Guests at the event were asked to make a donation to the Seán Cox recovery fund and did so generously. Seán, a Director at Precision Cables, was the victim of a vicious attack before a Liverpool game in April 2018. The attack left Seán with life-changing injuries that will require ongoing and intensive long-term care and support. That care will also prove costly and that's why the industry has been so proactive in rallying round and organising various fundraising initiatives to ensure his care is continued. The industry was very well represented at the IEBA Winter Ball. In total, €3,2250 was donated to the Seán Cox recovery fund. Chairman Cel O'Reilly asked guests to send their best wishes to Seán through message sheets at

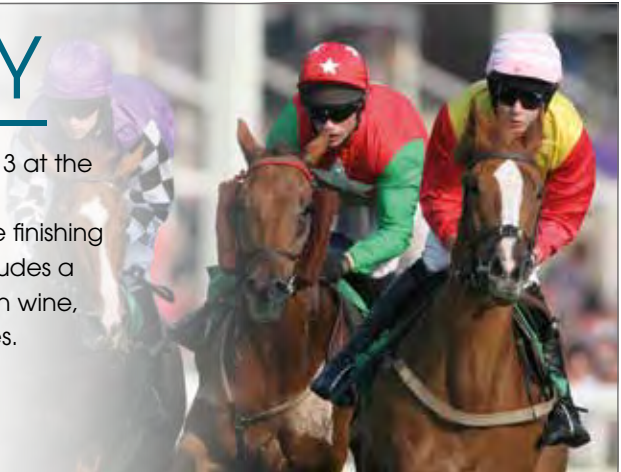


each of the designated tables. Over 150 personal get well messages were bound together in a beautiful book, which was presented to Seán's wife, Martina, by Cel. The SupportSeán campaign has gained widespread support and the recent IEBA-organised Ball is just one of a range of fundraising events. The IEBA wants to thank all industry members who have rallied to Seán's cause and contributed on the night

of the ball. Other industry events that have been organised to support Seán also show how much respect he has garnered in the industry. It's also a great example of how the electrical Industry is a wonderful family to be associated with and how it supports its own through associations like the IEBA and others. To donate to the fund or for details of the latest events, visit www.supportsean.com

IEBA RACE DAY

The IEBA's annual Race Day will take place on Sunday, March 3 at the National Hunt Finale at Leopardstown Race course. Hosted in the private Panoramic Suite with a view down on the finishing post, tables of 10 at the event are available at €1,200. This includes a Prosecco reception followed by a four-course buffet lunch with wine, entrance tickets, race programme and a free bet for the ladies. To reserve a table please call any of the following - Cel O'Reilly: 087 257 0770; Aidan Hayes: 087 233 3008 Pat Tully: 086 606 0678; Jimmy Whan: 087 299 4199.





100 YEARS OF POWERING YOUR CONNECTIONS

From electric irons to touchscreen tablets.
The first radio to the latest smart TVs.
The world has changed these past 100 years.

And we've been there, powering your connections
through our groundbreaking innovations.

The Multy Kontakt Socket. The first modern light switch.
The first 3-pin child resistant shutter system.

The outstanding installation benefits of in-line
terminals, backed out and captive screws.

We've set the standard for a century,
so you can specify, install and use our products
with complete confidence.

Today, and for 100 years to come.

mkelectric.co.uk



**LASTING
CONNECTIONS**

100
YEARS



Charles Arnold,
company founder.



Aidan Hayes,
National Sales
Manager, Ireland.



AIDAN HAYES, NATIONAL SALES MANAGER, IRELAND, REFLECTS ON 100 YEARS OF MK ELECTRIC...

100 years of MK Electric

Over the years MK Electric has become synonymous with wiring devices. In fact, there are probably very few types of building that haven't been fitted with an MK Electric plug, socket or other wiring device. In contrast, the success of MK Electric was created from humble beginnings, when Charles Arnold established the Heavy Current Electric Accessories Company in February 1919, with only second-hand machinery and two employees in North London.

REVOLUTIONARY PRODUCTS

At the inception of the Heavy Current Electric Accessories Company (HCEAC), there was just one product, the uniquely-named Multy Kontakt socket; a product which was safer and worked more efficiently than the split pin-style sockets that were on the market at the time. The Multy Kontakt also caught the attention of the British Engineering

Standards Association, which quickly aligned its standards to match the levels of self-adjustment and contact-making it introduced. By 1924 the success of the Multy Kontakt was abundantly clear, and with HCEAC a very cumbersome name – Charles Arnold and his 'sleeping' partner Charles Belling decided to adopt the name of their best-selling product, forming a new company known as 'M.K.' Electric.

Charles Arnold, a gifted electrical engineer, had an incredibly strong work ethic and dedicated himself to the growth of the company. This included a continued mindset towards innovating and developing the best possible products. By 1928, MK Electric was already using Bakelite rather than the hard wood of earlier products and the company designed the very first shuttered socket. Described as 'anti-flash' and billed as 'another revolution in socket design' this set a new standard for electrical safety

and formed the basis of the British Standard electrical system as we know it today.

WORLD WAR II AND BEYOND

During WWII, production at the factory shifted from plugs and sockets almost overnight, to a variety of items such as, detonators, firing systems and centrifuges for use in Spitfires, Hurricanes and Lancasters. At the end of the war, normal production quickly resumed and 1945 saw MK develop the first AC ceiling switch, followed closely by an AC wall-mounted version. Another landmark year arrived in 1955, as MK Electric launched the Plateswitch – the very first 'monobloc' light switch. Until this point, light switches consisted of a switch that was screwed to the mounting box and a switch cover plate. Featuring just two components, the mounting box and integral switch and frontplate, the new monobloc Plateswitch was cheaper and easier to install than



all contemporary products, instantly catapulting the business to market leader for switching. So influential was this design, that even today, virtually every light switch is based upon the original Plateswitch.

EXPANSION

The company went from strength to strength and after outgrowing its original premises, a new factory at Southend-on-Sea opened in 1961. Unusually for this industry, the company continues to manufacture products at the very same site. After many successes, the company took the decision to float on the Stock Exchange in 1966, with 12 million shares available at five-shillings. This would value the company at staggering £54.8 million in today’s currency. Fast-forward to 1986 and MK Electric had become a household name. In the same year, the company also received a Royal Warrant of Appointment, an honour only awarded to businesses which have supplied the Royal household with goods for at least five years. Additionally, MK Electric also achieved the ‘BS5750’ accreditation for its quality assurance systems at every site –

one of the first companies in the UK to do so.

NEW BEGINNINGS

In 1996, MK Electric evolved its shuttered socket design and developed the game-changing Logic Plus™ range of wiring devices. A 3-pin, child resistant evolution of a product which is still widely regarded as the most advance and safest on the market. Along with innovative features delivering faster and easier installation features - upwards facing, in-line terminals with backed out and captive screws. Furthermore, the design of the new Logic Plus™ also introduced a new modern curved edge aesthetic to the range. MK Electric was acquired by Honeywell in 2005 and, as part of Honeywell’s global operation, MK Electric could literally draw upon a world of technologies to help them develop the best products and solutions. As a result, MK Electric’s customers have access to the latest ideas and manufacturing advancements from around the world to deliver state-of-the-art, cost-effective products – and in

2014 celebrated the 100 millionth socket to come out of the historic Southend-on-Sea factory.

FORWARD-THINKING

By 2013, the tools for mass communication could be found in almost every adult’s hand across the UK, meaning the appetite for flexible charging increased dramatically. With this, MK Electric launched a USB charging module, one of the very first manufacturers to do so. This technology was then introduced to its iconic K2747 2g switchsocket and across the wider portfolio.

This year marks 100 years of trading for MK Electric, and is a time to not only look back on previous successes but also onwards to the continued leadership of MK Electric and the legacy set by Charles Arnold. This is also a time to reinforce our commitment to quality, reliability and safety.



by Honeywell

www.mkelectric.co.uk

LASTING CONNECTIONS

COMING TO



ONLINE REGISTRATION

NOW OPEN

www.electmagazine.com

Beat the queues - registration is quick and easy!

Regular updates on social media - #ELECTEX - Follow us:   

**FREE
EVENT!**

**1 DAY
ONLY**

CORK THIS SPRING!



ELECTEX

TRADE EVENT CORK 2019

THURSDAY 11 APRIL

OPENING TIMES: 12PM - 9PM

CLAYTON HOTEL SILVER SPRINGS, CORK

WHAT'S ON SHOW!

LIGHTING

FIRE AND SECURITY

ENERGY EFFICIENCY

POWER

NEW TECHNOLOGY

TOOLS

HEALTH AND SAFETY

AND MUCH MORE



FREE
PARKING



FREE SAMPLES
AND PRIZES



EXCLUSIVE
SHOW DEALS



WORLD CLASS
BRANDS



**Tegral Lighting
has a solution
for all your
lighting needs
with many
unique products**

E-mail:
sales@tegral-lighting.com

Tel:
01 8309684/85/86



APPRENTICES TO COMPETE FOR COVETED AWARD

Now embarking on a second year, the Generation Apprenticeship competition will once again showcase the best teamwork, leadership, creativity and problem-solving skills of Ireland's apprentices. There has been a great response to the second competition with an increase in entries, which will be judged in early 2019. The competition challenges teams of apprentices around the country to design and produce a 6-foot, 3-dimensional A letter,

based on the Generation Apprenticeship brand. The inaugural winning entry in 2018 from the Designer Group's Mark Fitzgerald and Conor Cregan is now on permanent display at the ESB International headquarters in Dublin Airport. The 2019 finalists will be showcased at a high profile exhibition and the winning entries will be announced as part of a national awards ceremony. The winners of the competition will be announced in April 2019. www.apprenticeship.ie

23% DECLINE IN WORK-RELATED FATALITIES

Figures released by the Health and Safety Authority show a decline of 23% in work-related fatalities from the period 2017 – 2018. This is the lowest figure since the establishment of the Authority in 1989. Five deaths were recorded in the construction sector. Commenting on the report, Director of Safety and Training with the Construction Industry Federation, Dermot Carey,

said, "The improvements made by members of the Irish construction industry in terms of safety procedures have inspired a major culture change towards the importance of safety throughout the sector. Safety is no longer a luxury or afterthought as it may have been decades ago; it is a priority at every stage of a modern construction project." www.hsa.ie

TRADESPEOPLE AND APPRENTICESHIPS NEEDED!

The CIF's recently published report, titled 'Trades and Apprenticeships Skills Survey – The Employers Perspective', identifies the lack of skilled tradespeople and apprentices as small firms struggle to take on apprentices. Two findings from the survey present serious implications for the industry – 71%



of member firms are currently not engaged in apprentice training while 63% of existing trades employers do not employ apprentices. Commenting on the report, Dermot Carey from the CIF said, "We need to encourage and persuade small contractors that taking on apprentices is beneficial to their business. Small contractors are concerned with continuous workflow and many can only see a few months ahead with regard to work.

"Unless incentives are put in place to help contractors take on apprentices, we will have a major problem delivering housing and projects in other sectors. It's also evident that the structure of the apprenticeship is a problem for employers, so that's something that also needs to be considered."

www.cif.ie



CHARITY BALL

The Irish electrical industry enjoyed a great night out at the IEBA Black Tie Charity Ball in Dublin – see all the pictures on our Facebook page @electricalmagazine.



ges group

PROVIDING THE BEST SOLUTION

GES Group partner with the world's #1 comprehensive motor manufacturer



BY COMBINING OUR TECHNICAL CAPABILITIES AND EXPERTISE, WE CAN PROVIDE SIGNIFICANT VALUE TO OUR CUSTOMERS.

Our value-added services, as an authorised partner, include:

- Express availability and local stocks
- Project management, sizing, and on-site commissioning
- Preventive and predictive maintenance
- Repairs, overhauls, and rewinds
- Efficiency analysis



**GES Group Head Office
Automation & Services**
Pennybridge Industrial Estate
Ballymena
Co. Antrim BT42 3HB

**GES Group - Mallusk
Motors & Mechanical**
Hyde Park Industrial Estate
McKinney Road Newtownabbey
Co. Antrim BT36 4PX

**T: +44(28) 2565 6406
E: info@ges-group.com
W: www.ges-group.com**

A POWERFUL PARTNERSHIP WITH THE WORLD'S MOST COMPREHENSIVE MOTOR MANUFACTURER...

GES Group become authorised Leroy-Somer distributor and repair agent

GES Group has become the only all-Ireland authorised distributor and repair agent of Nidec Leroy-Somer. Part of Nidec's Appliance, Commercial and Industrial Motors (ACIM) division, Leroy-Somer is a world leader in electromechanical and electronic drive systems, and the world leader in industrial alternators. As a leading and award-winning electrical and mechanical engineering company offering an extensive range of products and specialist services, the addition of the Nidec Leroy-Somer range to the GES Group portfolio is a positive development.

Nidec, the world's number one comprehensive motor manufacturer, acquired Control Techniques and Leroy Somer in 2017, and the decision to appoint GES Group as an authorised partner is part of the company's targeted growth strategy. "We are delighted to be appointed as an authorised distributor and repair agent for the Nidec Leroy-Somer range," said David Moore, Managing Director, GES Group.

"For over 45 years, we have prided ourselves on the powerful partnerships that we have developed with globally recognised customers and world-leading manufacturers. Nidec Leroy-Somer clearly falls into that category and are a great fit for our business.

"In 2018, we focused on achieving company-wide development. This announcement is a hugely positive way for us to begin 2019." Colin Ditchfield, UK & Ireland Sales



Announcing that GES Group is now an authorised Nidec Leroy-Somer agent are (from left) Peter Egan, UK & Ireland Sales Manager and Colin Ditchfield, UK & Ireland Sales Director, Nidec Leroy-Somer; Tom Grant, CEO, GES Group; Geoff Bowen, Sales Engineer, Nidec Leroy-Somer, and Lorraine Farrell, Customer Relations Manager, GES Group.

"In 2018, we focused on achieving company-wide development. This announcement is a hugely positive way for us to begin 2019."

Director for Leroy-Somer, added, "In terms of their commitment to quality and their long-standing reputation in industry, GES Group more than match our criteria for an authorised partner, and we are delighted to be working with them."

As an authorised Nidec Leroy-Somer partner, GES Group is able to offer value-added services to customers, including: express availability and local stock; project management; sizing and on-site commissioning; preventive and predictive maintenance; repairs, overhauls and rewinds; and efficiency analysis.

Looking at the history of both companies, it is clear to see the correlation in terms of reputation and quality.

Founded in 1919, Leroy-Somer is a French company employing

over 7,000 people worldwide, and Nidec's ACIM division has brand pedigree stretching over 100 years, delivering quality and innovative technology for generations. Established in 1972 as Grants Electrical Services (NI) Ltd., the company grew into GES Group – a silent partner to industry, and an essential element in maintaining and strengthening the backbone of power generation, utilities, manufacturing, and the agri-structure of Ireland and the UK. The Group's expertise includes control panels, distribution panels, PFC and harmonics, switchgear and drives, LV and HV installations and upgrades, renewable energy systems, and more.

T: 0044 (0)28 2565 6406

E: info@ges-group.com

www.ges-group.com

NORTHERN IRELAND'S electrical AWARDS 2019 ★

IN ASSOCIATION WITH



ENTRIES NOW OPEN

Deadline for entries:

Friday, April 12, 2019

Gala Awards Night:

Friday, June 21, 2019
Crowne Plaza Hotel
Belfast

For more information

on entries or sponsorship opportunities, contact Janice Uprichard on (NI) 028 9261 2990 or (RoI) 01 696 8319 or e-mail Janice@kmp ltd.co.uk www.elecmagazine.com

2019 AWARD CATEGORIES

Product Awards

- Lighting Product of the Year
- Electrical Product of the Year

Contractor Awards

- Electrical Contractor of the Year
- Domestic Contractor of the Year
- Fire & Security Contractor of the Year
- Specialist Contractor of the Year

Project Awards

- Lighting Project of the Year
- Domestic Electrical Project of the Year
- Commercial Electrical Project of the Year

People Awards

- Apprentice of the Year
- Sales Representative of the Year
- Unsung Hero
- Overall Achievement Award

Wholesaler Awards

- Electrical Wholesaler of the Year



ELECTROTECHNICAL CERTIFICATION SCHEME (ECS) IS HEADLINE SPONSOR FOR THIS YEAR'S EVENT AT CROWNE PLAZA HOTEL, BELFAST...

Northern Ireland's Electrical Awards 2019 - ENTRIES NOW OPEN!

It's time to get your entries in for Northern Ireland's Electrical Awards 2019, with the deadline of April 12 fast approaching. Launched in 2013, Northern Ireland's Electrical Awards recognise the country's best contractors, wholesalers, manufacturers, products, people and projects, with the winners set to be announced at the Crowne Plaza Hotel, Belfast, on Friday, June 21. The headline sponsor for this year's event has been confirmed as The Electrotechnical Certification Scheme (ECS). Steve Brawley, Chief Executive of the Joint Industry Board for the Electrical Contracting Industry, said, "The Electrotechnical Certification

Scheme (ECS) is proud to be the headline sponsor of this year's Northern Ireland's Electrical Awards. "The ECS has accredited the skills of the electrotechnical industry for over 50 years and we have ambitious plans to reinforce our service to clients, contractors and individuals in Northern Ireland. "We now use online systems to administer the Scheme, and the launch of the new ECS Registered Electrician in October 2017 has been a great success, with over 200 ECS Registered Electrician now based in Northern Ireland. "I have personally been highly impressed by the commitment to high standards and professionalism during my ten years serving as a

member of the Northern Ireland Regional Joint Industry Board. I am sure the Awards Night on June 21 will be an excellent event to recognise those companies and individuals who are excelling in their field." Ahead of the Awards Night, however, those across the industry are encouraged to put forward their entries for the chance to win a prestigious award. Categories have been selected to recognise every facet of our diverse industry, and entries will be judged by an independent panel of industry experts, giving you the perfect opportunity to showcase the high calibre of your work.



DEYES

LED RECESSED PANEL

Ideal for working environments



NEW
PRODUCT

UGR13
RATED

ENERGY
EFFICIENT

EMERGENCY
OPTION

DEYES PANEL

The Deyes is a LED recessed module suitable for T bar ceiling systems. It boasts a UGR13 rating, therefore keeping glare and discomfort to a minimum, making it the ideal lighting solution for offices and other commercial working areas. 115Lm/W will significantly reduce the power consumption and the running costs, making it energy efficient as well as stylish. Emergency version also available.

- Matt white and clear polycarbonate finish
- 30W LED module (SMD)
- Complete with LED driver
- K: 4000 Lm: 3450 Lm/W: 115
- Sq: 595mm H: 20mm
- Class 2

For our full range visit www.saxbylighting.com/Elec-Deyes-19
or call **0333 234 6893**



saxbylighting



@saxbylighting

saxby
lighting

STRUCTURED WIRING SYSTEM MEETS THE NEEDS OF THIS HIGH SPECIFICATION PROJECT...

Wieland's Metalynx2 structured wiring system chosen for Dublin project

Wieland Electric's Metalynx2 structured wiring system has recently been installed at 5 Hanover Quay, a new commercial development situated in the vibrant Grand Canal Dock area of Dublin.

5 Hanover Quay is a high specification 7 storey building providing over 15,000sqm of commercial space, in addition to apartments and 4 large retail units located on the ground floor. Core Electrical, Wieland's exclusive distributor for building installation products in Ireland, worked alongside consulting engineer, Ethos Engineering, and electrical contractor, Suir Engineering, to design and supply the bespoke Metalynx2 modular wiring system. The project brief was to provide a

flexible and sustainable modular wiring system that would operate with the DALI open protocol based lighting control system and that could be easily installed, whilst meeting the tight deadline.

The Metalynx2 system uses cutting edge manufacturing techniques and arrives on site fully assembled, pre-wired and tested. Using a plug and play connectivity system has been proven to generate savings of 70% in installation time that results in significant reduction in overall costs, whilst cutting down on waste. The system is robust, reliable and flexible to offer a quick, hassle free installation and Metalynx2 is also future proofed so, should plans change during the build or in the future, it can be adapted to suit.



Using Wieland's Metalynx2 at Hanover Quay has allowed Core Electrical to provide a system with greater environmental and operational efficiencies quickly and efficiently.

For more information, contact Wieland supplier, Core Electrical on 01 4537033 or visit the Wieland website at www.wieland.co.uk

MULTI-SENSOR FIRE ALARMS MEET THE NEEDS OF GROVE'S PROPERTIES IN BELFAST...

No more false alarms following Northern Ireland Housing Association's switch to Aico Alarms

Grove Community Housing Association in Northern Ireland has replaced its existing smoke alarms with Aico's Multi-Sensors and E1164e Heat Alarms in more than 80% of its properties. Grove manages 218 properties in North Belfast, which are a mixture of new builds and renovated dwellings. With the smoke alarms in these properties coming to the end of their 10-year life, Grove looked for reliable mains powered alarms that could reduce false alarms.

Denis Bleakley, Grove Community Housing Association General Manager, explained, "We wanted 10 year life rechargeable batteries so neither tenants nor the Association would be troubled by battery replacement. Being rechargeable

also means that if for some reason the electricity supply is off for an extended period, the batteries still do not need to be replaced and the alarms function safely. We liked the Multi-Sensor technology to reduce false alarms for us and our tenants, which we found was backed up by BRE research."

The Multi-Sensor Fire Alarms contain two sensor types, optical and heat, to constantly monitor smoke and heat levels, sending and receiving information via its intelligent detection software, for fast response and reduced false alarms; the latter is enhanced through a dust compensation feature.

Since the new Aico alarms have been installed, Denis states that he has not had any false alarms



reported. Furthermore, the installer confirmed there were no faulty alarms which is testament to Aico's quality control.

T: (NI) Duncan Orr on 07876 548019 or duncan.orr@aico.co.uk

T: (RoI) 00353 (0)61 471277 or info@eielectronics.com

www.aico.co.uk or www.eielectronics.com



ELECTRICAL EXCELLENCE

TOP MARKS GO TO EXCEL ELECTRICAL AND KELLIHERS FOR THE HOLY FAMILY PRIMARY SCHOOL IN RATHCOOLE, CO DUBLIN...

A positive working relationship and an emphasis on collaboration have allowed Excel Electrical and Kelliher's to deliver a top class electrical package to the Holy Family Primary School in Rathcoole, Co Dublin.

The new facility, which was designed by McCullough Mulvin Architects and built by Ganson, is a two-storey extension and refurbishment of the existing school. Associated works to the site included the installation of an attenuation tank, development of a new car-park and set down area. An extremely tight site meant all the teams involved

in the build had to work very closely together to ensure the new school was built to the highest possible standard. The existing 1970's school was also upgraded in line with the new, modern extension.

Excel Electrical provided a first-class, full electrical install to the new school. This included a new emergency lighting system, a new fire alarm system, CCTV, door access, structured cabling and a new public address system.

All electrical elements required for the new facility were expertly provided by Excel Electrical, a firm that's no stranger to educational projects.

"We have worked with Ganson in the past and so we were familiar with how they operate and, indeed, they know how we operate too. This was a straightforward project and no particular challenges cropped up during the installation. We're well used to educational facilities and knew what was required," said David Treacy at Excel Electrical.

The firm has also worked with Kelliher's Electrical on several projects in the past. A collaborative approach between the two companies and a determination to meet the deadline meant the electrical installation was completed to schedule and to



Kelliher's Electrical, Unit 1-2 Loughboy Industrial Estate, Kilkenny
T: 00353 (0)56 7750410 - E: web@rexel.ie
www.kelliher's.com/www.rexel.com



the highest standard. Products supplied by Kellihers to the new school extension included Thorn lighting, MK wiring accessories, Schneider wiring accessories and Nexans data cabling and connectors. Kellihers prides itself on only stocking and supplying market-leading products from some of the world's top manufacturers. When it comes to durability and quality, the company is happy to stand over its product ranges.

Products were delivered to site promptly, allowing David and the rest of the team at Excel Electrical to get on with the job without delay.

David added, "Deliveries were made to site exactly when we needed them, which allowed us to get on with the job. We source electrical products from Kellihers on a regular basis. We know that they're dependable

and we're confident that the products we're supplied with are of the highest quality." With 22 branches across Ireland, Kellihers Electrical has the capacity to serve electrical industry professionals all over the country on a daily basis. A comprehensive stock profile, reliable delivery, competitive pricing and knowledgeable staff ensure a high level of repeat business and indeed they're the reasons why Excel Electrical continues to do business with the wholesaler. The Holy Family Primary School in Rathcoole has benefitted from Excel Electrical and Kellihers' combined efforts to ensure a top quality electrical install.

Excel Electrical has been operating for over 20 years and has grown to become one of the leading electrical contractors in the country.

The company is dedicated to providing its customers with the highest standard of service and ensuring all projects meet current compliance requirements.

Excel Electrical also has the most effective electrical, security and networking systems to suit every requirement and budget, all while minimising energy waste. A proven track record of delivering projects on time and on budget meant it was the ideal choice for this school extension.

The installation package provided by Excel Electrical and the products supplied by Kellihers have allowed McCullough Mulvin's vision to become a reality and have helped create a modern, aesthetically pleasing yet functional school that has become an integral part of the community in Rathcoole.

Excel Electrical Ltd, Unit 4 Westcourt Business Park, Callan, Kilkenny
 T: 00353 (0)56 7706040 - E: info@excelelect.com
www.excelelect.com



ENER-J'S WIRELESS KINETIC SWITCHES ARE A REAL INNOVATION WHICH WILL SAVE A LOT OF TIME ON EVERY SWITCH INSTALLATION...

Go battery free and wire free on your switches

Installers no longer need to be constrained by wiring location, the need to install back boxes or cut holes into walls as ENER-J's Wireless switch can be installed or placed to maximise convenience.

ENER-J's wireless switch has a built-in micro energy generator, so the action of pressing the switch generates enough kinetic energy to create and transmit a radio signal. This, in turn, will switch on/off via a receiver (wireless controller) lamps or other loads. Advantages of using ENER-J's wireless switches include:

- **Wireless** - No piping or wiring required.
- **Eco-friendly** - No battery, no dust, no construction waste.
- **Maintenance free** - No need to ever change the battery.

- **Water-resistance** - The switch can work in wet environment (IP67).
- **Long range** - The reliable RF remote control extends 30m indoor and 100m outdoor.
- **Memory function** - Remembers previous settings.
- **Flexible pairing** - Create multi-location switch.
- **Easy installation** - Takes only 5 minutes to install, with no battery, no WiFi, no BLE, no app required.
- **Durable** - 50 years mechanical lifetime of the switch.
- **Cost saving** - Saves 30% compared to a traditional switch. Reduces manual labour and decreases construction costs by 30%.

Applications include home, offices, hotels, supermarket, factories,



hospitals, hazardous locations, old buildings etc. ENER-J offers a wide range on these switches including 1 Gang, 2 Gang, 3 Gang and 6 Gang Switches along with non-dimmable or dimmable receivers. Dimmable receivers can be remotely used via an ENERJSMART app and also through voice control via Alexa and Google Home.

For more details on this products, visit www.ener-j.co.uk

See and Record

who's knocking on the door with our Best Selling Wireless Video Door Bell



TRADE PRICE
£85.50

- 2 Way Audio, Motion Sensor and Night Vision.
- Never Miss any Visitor at your Door. No Mains wiring needed.
- No Monthly Fees unlike other Brands.
- Easy to Install and Pair with your Smartphone via our free APP

Wide Range of Smart Products. All on 1 APP

Wi-Fi twin wall socket

RGB LED strip kit

Wi-Fi ceiling lamp & speaker

Wi-Fi LED Lamp

Wi-Fi In-line switch

Wi-Fi extension strip kit

Wi-Fi smart plug

Wi-Fi smart GU10 lamp

Wi-Fi smart doorlock

+44 129 144 6105
info@ener-j.co.uk
www.ener-j.co.uk



SATURN LED WORKED CLOSELY WITH LEADING BUILDING CONTRACTOR, McALEER & RUSHE, TO PROVIDE THE PERFECT LIGHTING EXPERIENCE FOR THIS CONTEMPORARY OFFICE REFURBISHMENT...

Brief: Meet the practical and aesthetic lighting requirements of multiple office and communal areas at McAleer & Rushe's head office in Cookstown.

How: Saturn LED's dedicated Project Division provided a complete specification and value engineering solution. Known as the Lighting Experience, this service from Saturn LED focuses on premium luminaires.

What: Saturn combined Infinity and Clarity panels to perfectly optimise the lighting requirements in the office areas. Both IP20 LEDs are compact and ultra-slim fitting, providing a 50,000-hour lifespan and zero maintenance. The high quality compact Diamond LED downlight perfectly complemented the Infinity and Clarity panels. This range outperforms comparable, traditional style PL fittings, with the added advantage of having the same size cut-outs.

Contact: If you're struggling to meet your budget on a new build or refurbishment lighting project, then contact the Saturn LED Project Division on 0044(0)28 8788 0063 or e-mail sales@saturnled.eu



Saturn LED, 153 Brackaville Road, Coalisland, Co. Tyrone, BT71 4NL. T: 0044 (0)28 8788 0063 - E: sales@saturnled.eu
www.saturnled.eu

Ex LED Lighting Solutions from PETREL



9 Series Ex eb mb op is LED Luminaire

Zones: 1 2 22 Cat: 2

From 2-5 ft with light output up to 10,000 Lumens



LED Area Light Ex eb mb op is

Light output from 10,000 to 24,000 Lumens

Zones: 1 21 2 22 Cat: 2



PLX Portable LED Luminaire

Zones: 1 21 2 22 Cat: 2

Robust and high durable, 110-240V, up to 8,000 Lumens



XN nA nC Standard & emergency LED luminaire

Zones: 2 22 Cat: 3

From 2-5 ft with light output up to 10,000 Lumens



Please contact our Sales Office for further information

USING SPARKSAFE LTP IS A PROVEN METHOD OF RAISING STANDARDS AND ENSURING ISSUES SUCH AS SUB-ECONOMIC TENDERING AND SKILLED LABOUR SHORTAGES CAN BE TACKLED...

Standards are falling

Broad anecdotal evidence from the industry points to a decline in the standard of work and practice in the UK electrical contracting sector.

An ageing workforce, low-level uptake of apprenticeship training and a mounting dependence on the uncertainty of foreign and semi-skilled workers all compound the short, medium and long-term difficulties.

NEGATIVE CONSEQUENCES!

Loss of trust, borne out of poor historical control measures, as well as ineffective industrial and political strategy have weakened consumer confidence in the identity and value proposition of our sector. As a result, the trade has slipped from the top rungs of the construction trade ladder.

WHAT CONTROL MEASURES?

Established control measures for those individuals who carry out electrical work on behalf of the electrical industry have progressively declined during the period. The absence of specific legislation, resistance to industry lobbyists by successive governments and apathy within the trade have facilitated the rise and dependency on unregulated electrical workers.

NEW HOUSE RULES REQUIRED

The government requires industry to keep its house in order. However, the supply side hasn't quite managed to meet this requirement. We have failed to maintain an adequate

guard on the gate and have unfortunately developed a tolerance for lower cost, semi-skilled labour on which there is a short-term gain but ultimately a diminishing return.

TENDER DYNAMICS

Client preference and subsequent sponsorship of competitive tendering that excludes "a condition of tender" requirement covering individual worker competency may produce lower and lower contract prices. However, this procurement strategy has inadvertently undermined and degraded the national training and skills imperative. Only a few discerning and responsible procurement organisations in the private sector factor in the electrical accreditation of individual workers beyond those of a basic health and safety passport.

WEAKENING RESILIENCE

Many associations, bodies, authorities, and unions in the UK and Ireland work hard to improve quality and raise standards in the industry. However, commercial objectives, market segmentation and feuding politics within and around the industry often confuse clients and weary stakeholders. The outlook for productivity and service levels in the electrical contracting industry are likely to be more of the same in 2019. The decline in the sector's skill base and weakening industry resilience is occurring gradually in some areas.



In other areas, the problems of skilled and affordable labour are becoming acute. Fewer high quality, new entrants are being attracted, and a less productive, ageing workforce is steadily retiring. The emerging skills gap in the industry's training pipeline is likely to mean that clients may even face difficulties in sourcing and appointing the next generation of high quality, well-resourced electrical contractors.

ACTION REQUIRED

Client behaviour and procurement policy is the principal corrective measure. The industry struggles to remedy the problems of sub-economic tendering and skilled labour shortages. So the industry must persuade responsible clients to be more discerning when appointing an electrical contractor. Accrediting and monitoring individual worker competency per project via the Licence to Practise system is an effective industry-led initiative that can be used to engage the client and achieve this outcome.

SparkSafe Licence to Practise - Registered Charity: NIC101034
T: (NI/RoI) 0044 (0)28 2566 6835 - E: enquiries@sparksafeltltp.co.uk
www.sparksafeltltp.co.uk

SparkSafe
Licence to Practise

Di-LOG

...measurably better

THE ALL NEW

DL911x Series 18th Edition MFT

NEW >>>

RCD-LOC

XLT

No RCD Up-lift
Noise Effect
Technology



RCD-LOC

Xpert Loop
Technology

Di-Log's NEW Xpert Loop Technology provides highly accurate low current loop testing, without any RCD or RCBO uplift with anti noise technology.

- Auto Start Earth Loop & Continuity Tests
- Phase to Phase Loop & Phase Rotation (DL9118)
- User Friendly Design with Tool Box Carry Case
- Full Range Protection when voltage incorrectly applied
- 1000V Insulation Test (DL9118)
- The UK's Largest RGB Screen
- Remote Test Probe (optional extra with the DL9110)
- Auto RCD & Ramp Test
- RCD-LOC XLT



Made in the UK

2 YEAR WARRANTY

option to extend to 3 years
with the Di-Log Service Plan

N Ireland - Des McGuicken
Rep.of Ireland - Bernhard Jakob

DMG Agencies 07732 690 594
Innovative Tools 087 251 3221

DARKIN EV OFFERING CONSULTANCY SERVICE TO ELECTRICAL CONTRACTORS ON INSTALLATION AND SERVICING...

Electrical vehicle charging opportunities for contractors

Electrical contractors keen to make the most of the opportunities now available through the growing popularity of electric cars can benefit from the expertise of Darkin EV. Darkin EV is now offering a consultancy service to electrical contractors in relation to the installation and servicing of electric car charging units. With car manufacturers reducing their diesel offerings and replacing them with a range of full EV and Hybrid models, electric car use is increasing. EV infrastructure is also increasing in public spaces such as service stations, car-parks, hotels and shopping centres, while there is a growing trend within the business community to include them. Domestic installations are being boosted by grant incentives. "This is a growing sector with plenty



of potential for forward-thinking electrical contractors, so we are delighted to be able to offer this consultancy service," explained David Dunning, who heads up Darkin EV. "There is demand for electric charging units in both home and commercial projects and we are able to offer expert guidance alongside the design, supply, installation and maintenance of EV charging units.

"The fact that grants are available in both the UK and Ireland offers incentives to install electric car charging units and alongside the growing interest within the business sector, these are clearly an area that contractors can make the most of."

Part of the highly successful and award-winning Darkin Group, this new division has quickly made a

"Darkin Group provide expert guidance alongside the design, supply and installation of EV charging units."

name for itself as an expert in the lucrative electric car charging sector.

Focused on providing expert guidance alongside the design, supply and installation of EV charging units, Darkin EV has solutions to meet the requirements of home, business and public and environments. From the adaptable wall mounted charger through to public use street chargers and high performance fast DC chargers, the company offers a charging solution from market-leading manufacturers to suit each setting.

Darkin EV, Unit 22, Block 613, Greenouge Business Park,
Rathcoole, Co. Dublin. T: 00353 (0)1 4016746
E: info@darkinev.ie - www.darkinev.ie



PROJECT BANK ACCOUNTS ARE LEADING TO SHORTER PAYMENT TIMES AND GREATER FINANCIAL SECURITY...

Praise for payment initiative

SME firms in Northern Ireland's construction industry - including those in the electrical sector - have heaped praise on the Project Bank Account (PBA) initiative which has been driven by Construction and Procurement Delivery (CPD), the procurement authority in Northern Ireland.

PBAs ensure that payments lodged in the Account for firms in construction supply chains are secure in the event of upstream insolvencies and that there are shorter payment times.

Since January 2013, according to CPD figures, 32 Public Sector contracts have been awarded which include a PBA. The total value of these contracts is approximately £1.3 billion. Over the same period 100 subcontractors have been paid directly from a PBA; once the funds have been lodged within the PBA by a Public Sector procurer, sub-contractors have been paid within 4 days. This award-winning initiative has received plaudits from firms which have received their payments from a PBA.

According to a director of one mechanical and electrical business, PBAs have made a significant difference to his cashflow - "The improved cashflow greatly assisted our overall project performance, allowing us to focus on delivering the work rather than chasing payments. We would welcome

any project that is to be managed using a project bank account and would add that lowering the financial ceiling to £1m would greatly assist the cashflow of all SME's involved in like projects." Alfie Watterson, the Executive Officer for the Specialist Engineering Contractors' (SEC) Group in Northern Ireland (representing the largest sector, by value, in Northern Ireland's construction industry) added that SEC Group had been working very closely with CPD to promote this initiative across the industry.

"This is the modern approach to paying sub-contractors in construction. Everybody is paid from the same 'pot' instead of monies having to cascade through different contracting layers. If a PBA had been in place when Carillion Energy Services took on the £133million contract to upgrade energy systems in Northern Ireland's housing, the losses from its collapse would have been far less. I must take this opportunity to give tremendous credit to CPD which has pioneered this work and, in

doing so, has supported many SMEs across Northern Ireland."

Speaking on behalf of CPD, its Chief Executive, Des Armstrong, said, "CPD remains committed to the promotion of fair and prompt payment for Government construction supply chains. We recognise the importance of this to the solvency of construction SMEs and their performance on Government construction contracts.

"Project Bank Accounts (PBAs) represent a significant step forward in ensuring that sub-contractors receive the benefit of prompt payment. CPD's PBA initiative has been developed in collaboration with the Construction Industry Forum for Northern Ireland.

"I am pleased that CPD's approach has been recognised, not just by Scotland and Wales, who have broadly replicated CPD's model, but also by jurisdictions as far away as South Korea, the Czech Republic and Australia, where those administrations have also sought advice from CPD on the implementation of PBAs."

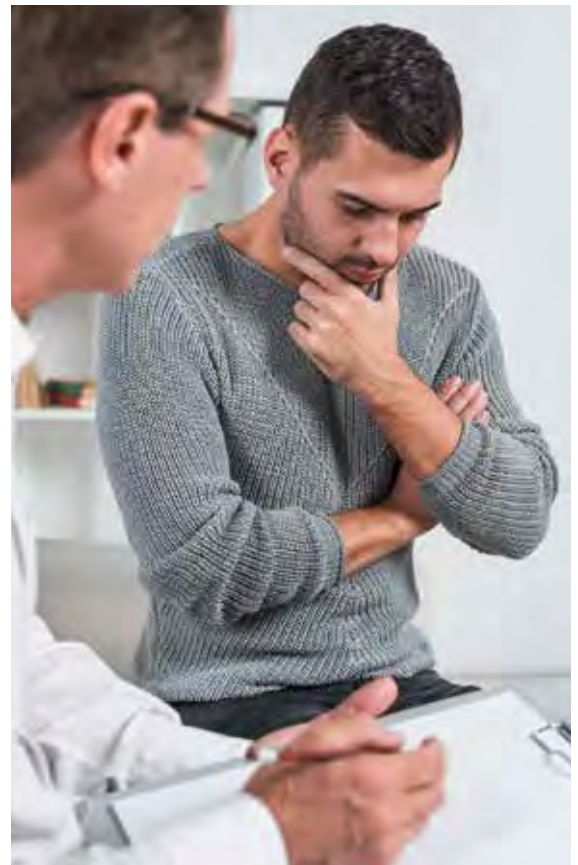


ELECTRICAL INDUSTRIES CHARITY LAUNCHES CAMPAIGN TO TACKLE CANCER RATES...

Could you live without a salary for 3 months?

Following on from the success of last year's mental health awareness campaign, the Electrical Industries Charity Northern Ireland Branch will be focussing on cancer in 2019. Karen McAvooy, Chair of the Electrical Industries Charity Northern Ireland Branch, said, "Last year we made great strides in combatting mental health issues in our industry and that will continue, with businesses and employees benefitting from initiatives such as mental health awareness training and mental health first aider training as well as our Mental Health Calendar for 2019. "While mental health is a silent killer, cancer is very much to the forefront of society, so we need to highlight the support that is in place. Our Employee and Family Support Programme will have a valuable role to play in helping those in our industry,

as well as their families, facing the challenges of a cancer diagnosis or treatment. We have a range of resources on offer for both employers and employees to avail of." EIC has worked in partnership with Macmillan for the last few years. As Macmillan is restricted to £400 in terms of financial assistance it can give to people undergoing treatment for cancer, EIC established a funding partnership where by anyone in the industry being treated for cancer and in financial distress is directed by EIC to support their needs when undergoing treatment for cancer. For the electrical industry the number one cancer being faced is prostate cancer. Average treatment time for this is 4 months, which means, for most people, being on SSP for at least 3 months. Can you live without a salary for 3 months? That's where EIC support is so vital.



What does EIC help with?



- Counselling for patient and their families
- Financial assistance
- Legal support
- Medical assistance

Access Assistance: 0800 652 1618



Pensioners

The Electrical Industries Charity (EIC) has also launched the Pensioner Support Programme (PSP) to provide a safety net to those who are faced with numerous hurdles and are in need of that little extra support during their retirement and is encouraging everyone within the industry to show their support too. Through PSP, the charity is able to provide those in retirement with a

way to connect with their fellow retired colleagues and offers support services, including financial grants and assistance, support for carers, disability and building rectification grants, telephone counselling, legal advice, complex case management and will writing assistance to allow for a more social and happier life. www.electricalcharity.org



Electric Lunch 2019
Support for Cancer



Look out for pictures of this event on our Facebook page @electricalmagazine



LUCECO

light it up with LUCECO Inspection Lights

Luceco's range of new LED Inspection Lights offers tradesmen, installers and quality inspectors a durable LED work light for any workplace.

- A powerful and reliable light source
- Lightweight and durable design for easy use
- Hands-free use, through magnetic bases, clamps and suspension hooks

LED



Rechargeable



LUCECO

www.luceco.com



@lucecoplc



@lucecogroup



LUCECO HAS JUST LAUNCHED ITS NEW RANGE OF INSPECTION TORCHES AND WORK LIGHTS...

Light up with Luceco!

The new range, from lighting experts Luceco, has been extensively tested to offer the perfect lighting solution for a huge variety of jobs and boasts high lumen variation, USB charging capability and multi-shadow prevention. Consisting of two work lights and four inspection torches, the range will be a welcome boost for professionals AND DIYers alike as Luceco puts its knowledge and expertise behind these new products. Simon Shenton, Head of LED Development at Luceco, said, "The new lights and torches will provide an all-round light solutions package, allowing jobs to be carried out with ease. At Luceco, our mission is to create a rich range of products that are practical, versatile, cost-effective and appeal to a wide segment of trade users and DIY-enthusiasts."

The work light range consists of rechargeable Clamp Work Light with 360 degree rotation; this powerful light boasts a brightness of up to 1300 lumens, a durable polycarbonate structure, four hour battery life on full output and a 50% brightness mode to offer flexible light for a variety of situations. This is accompanied by the new Magnetic Work Light, offering a strong magnetic base and 1000 lumens for all those tricky to light places. Luceco's Inspection Torches are perfect for shedding light on hard-to-reach places. Coming in 1.5W, 3W, 5W and 10W versions, all torches feature clever technology to prevent multi-shadowing, which

can sometimes obscure the area, hindering a thorough inspection.

The 3W, 5W and 10W models also have the capability to charge other devices such as phones and tablets, meaning users should never be caught without battery power as long as they have the versatile inspection torch to hand.

The new range is now available to purchase across all outlets stocking Luceco products.

T: 0044 (0)1952 238 100

E: uk_sales@luceco.com

W: www.luceco.com



"Luceco's Inspection Torches are perfect for shedding light on hard-to-reach places."



NEW SMART LIGHTING FROM **OPPLE** LIGHTING.

LED Downlight Performer



NEW

- Available as wireless Smart Lighting solution (BLE)
- High efficacy (over 100 lm/W) combined with low glare
- Direct replacement for compact fluorescent downlights saving over 60% of energy costs
- Common cut-out diameters of 150mm and 200mm
- Provided with protective foil in order to prevent the downlight from dust and dirt during the assembly (IP44)
- Suitable for retrofitting due to available adapter ring sizes
- Flicker-free

LED Slim Panel Performer UGR19

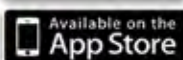


NEW

- Improved efficacy of up to 115lm/W, combined with office compliant UGR19
- NEW: available as Smart Lighting solution (BLE)
- NEW: IP54 version available
- Recessed, suspended and surface mounting possible
- Low glare luminaire brings comfort to working and study environments
- Up to 60% lower energy consumption vs TL
- Flicker-free
- Surface module available (5cm thickness)

LED SMART LIGHTING

- Full wireless lighting control with Bluetooth Low Energy (BLE)
- Create dynamic office lighting, without extra control wires
- Extremely easy to install, no control hardware required
- Maximum energy saving by using Smart Sensors
- Easy scene setting via free OPPL Smart Lighting App
- Maximum security by coded signals and strict user management



Accessories

LED Smartlight - Rc-Sensor



LED Smartlight - Switch





The new simple and intelligent smart lighting system from Opple Lighting

EXCLUSIVELY AVAILABLE IN IRELAND THROUGH FEGIME IRELAND...



OPPLE Lighting has recently launched a new Bluetooth Smart Lighting System in Ireland, available exclusively through Fegime Ireland members.

This simple solution is perfect for retrofit and new installations, with a user-friendly, free mobile app that allows users to control their lighting using the free Opple Smart Lighting App with their smart phone or tablet.

The use of smart lighting in office environments can save a great deal of energy, but the associated installation and use are often complicated and expensive. Furthermore, a specialised installer is required in many cases. As a result, smart lighting is currently only used in relatively few applications. OPPLE has developed a completely new system to make the features and benefits of smart lighting available to everyone. OPPLE's Smart Lighting system is characterised

by extremely simple installation. The luminaries can be attached to the ceiling and connected to the power supply directly out of the box, followed by installation and set-up with OPPLE's free Smart Lighting App (Android and iOS).

No extra wires, fittings, gateways, servers or controllers are required - everything is included in the LED driver in the luminaire and it communicates directly with your smartphone or tablet.

Anyone can use it - so there is no need for experts!

OPPLE's Smart Lighting products are fully compatible with Bluetooth Low Energy (BLE) 'mesh' topology. The LED Slim Panel Performer, the LED Downlight Performer, a wireless motion detector and a wireless wall switch are the first products in this

'smart' family.

In addition, all these smart products can be controlled using OPPLE's Smart Lighting App.

The new OPPLE Smart Lighting system can reduce your energy bills by up to 60% compared to conventional lighting systems.

Very short payback times can be achieved (1 year) thanks to the competitive price and ease of installation.

Furthermore, OPPLE's Smart Lighting system allows you to program specific scenes for different rooms.

Switch to OPPLE's Smart Lighting system today, cut your bills straight away and experience the benefits of modern smart lighting at first hand!

OPPLE's new Bluetooth Smart Lighting System is available in Ireland exclusively through Fegime Ireland members. For your nearest member, visit www.fegime.ie



arlico
LIGHTING YOUR WAY

Architectural Lighting and Controls

YOUR POSSIBILITIES ARE ENDLESS



EXCLUSIVELY AVAILABLE
IN IRELAND FROM

Scotopic Solutions 
The Lighting Experts

contact Michael Martin on 0044 (0)7543841248
or e-mail Michael@scotopicsolutions.com



Commercial Lighting Solutions

VERSATILE BRANDS



A technical brand synonymous with quality, flexibility and reliability.



A contemporary brand reserved for luminaires of exquisite design for contract feature lighting.



A heritage brand combining the latest lighting technologies with timeless classic designs.

EXCLUSIVELY AVAILABLE
IN IRELAND FROM

Scotopic Solutions 
The Lighting Experts

contact Michael Martin on 0044 (0)7543841248
or e-mail Michael@scotopicsolutions.com

MICHAEL MARTIN'S
NEW COMPANY JOINS
FORCES WITH ARLICO,
STEON LIGHTING
AND CHRISTY
FLOODLIGHTING...

Scotopic Solutions turns light on three new agencies



Scotopic Solutions has announced the company's first three exclusive agencies – Arlico, Steon Lighting and Christy Floodlighting. Established last year by Michael Martin – the former Regional Director

of Ireland for Thorn Lighting – this new lighting company's drive to fill a niche in the local marketplace is evident in this initial announcement. "We are delighted to be named as exclusive agents of these three respected lighting companies.

ARLICO

This UK-based lighting manufacturer, designer and supplier of high-quality, architectural lighting and associated control systems offers a comprehensive range of on-trend products such as Vogue, a striking collection of professional linear LED lighting, perfect for office, leisure and retail applications, and AuRA professional grade LED tape light. The Arlico range is suited to a range of commercial lighting and leisure applications.

STEON LIGHTING

Steon employ a wealth of experience in designing and manufacturing lighting solutions for a variety of industries, including commercial, industrial, healthcare, educational and residential applications. The product portfolio consists of three distinct registered brands - Steon, Luxace and Historix- that collectively boast products ranging from technical and decorative through to more classical heritage designs alongside the latest LED lighting technologies.

CHRISTY FLOODLIGHTING

Christy already has an enviable reputation as a leading manufacturer of raising and lowering high mast floodlighting systems and now the company has joined forces with GigaTera to offer the premium sports floodlighting. Offering a greater level of control, optimal uniformity luminance, minimised glare and flicker free technology, this bespoke range is also perfect for open area applications.



ARLICO



STEON



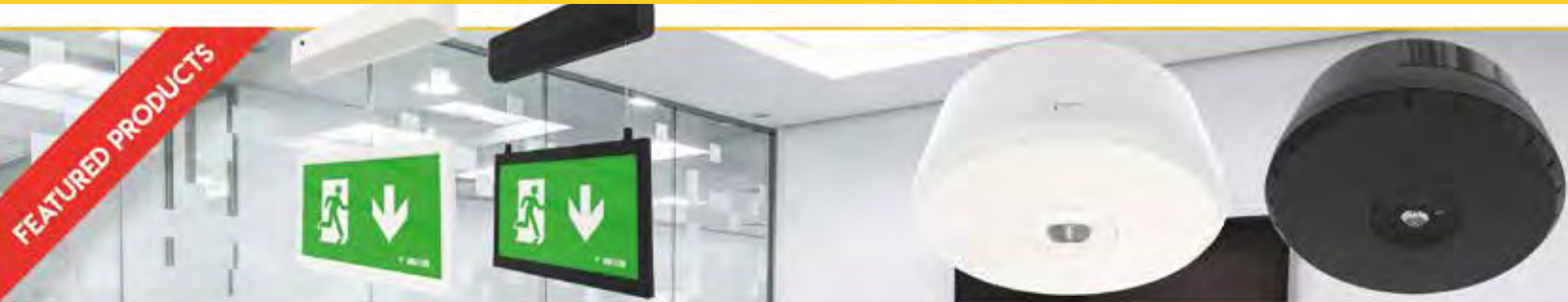
CHRISTY



Michael Martin T: 0044 (0)7543841248
E: Michael@scotopicsolutions.com



FEATURED PRODUCTS



MULTILUX BLADE

THE MULTILUX BLADE IS AN EASY TO INSTALL, UNOBTRUSIVE AND AESTHETICALLY PLEASING PANEL EDGE LIT EXIT SIGN PRODUCT FITTED WITH A LED LAMP SOURCE.

SPECIFICATION

- Single/double sided, wall, ceiling mounted, & recessed hanging panel IP40 EXIT luminaire.
- Supplied with ISO legend kit for flexibility on site. (01,02,03 & 04).
- Built-in down lighter (60 Lumens).
- Standard 1000 mm suspension distance.
- 6 year warranty (N5XP) & 3 year (DALI) including battery.

OPTILENS SURFACE MOUNT

THE OPTILENS SURFACE MOUNT UTILISES THE LATEST LENS DEVELOPMENT TO PROVIDE MARKET LEADING UNIFORM LIGHT DISTRIBUTION FOR BOTH ESCAPE ROUTE AND OPEN AREA EMERGENCY LIGHTING APPLICATIONS.

SPECIFICATION

- Small discreet surface mounted luminaire.
- Easy to install and maintain.
- First fix fitting.
- Supplied with both escape route & open plan lens.
- 6 year warranty (N5XP) & 3 year (DALI) including battery.

SEE VENTILUX WEBSITE FOR SPACING TABLE OPTIONS

BOTH PRODUCTS CAN BE USED WITH DALI AND N5XP SYSTEMS

Ventilux designs, manufactures and offers an extensive range of safety system products and services, including the design, commissioning, service and maintenance of emergency lighting, central battery systems, and luminaire conversion equipment.

Founded in 1986, Ventilux has since grown steadily to become one of the largest independent emergency lighting manufacturers in Europe and the Middle East.

The company's Head Office in Bray, Co. Wicklow, Ireland, is the centre of the Ventilux operation, with over 35,000sqft of state-of-the-art production facilities, research and development laboratories, in house training centre and global distribution warehouse. Liverpool is the UK base for distribution, sales order processing and in-house conversions.

**SEE VENTILUX.COM
FOR FURTHER INFORMATION**



IRELAND IDA Business Park, Southern Cross Road, Bray, Co. Wicklow, A98 T276. T: +353 (0) 1 214 8800, E: sales@ventilux.ie

UK Arbour Court, Arbour Lane, Knowsley, Liverpool L33 7XE. T: +44 (0) 151-5464155 E: sales@ventilux.co.uk



NORTHERN IRELAND SALES

Tyrone Campbell,
T: 07715 213 991
E: tyrone@ventilux.ie



THE LIGHTING DESIGN SERVICE BY THE EMERGENCY LIGHTING SPECIALISTS OFFERS COST SAVINGS ON MAINTENANCE COSTS...

Ventilux has the right solutions for LinkedIn and Liverpool One

Ventilux has delivered emergency lighting solutions that provide considerable costs savings against ever-growing maintenance costs for a major social media company in Dublin as well as a leading shopping and entertainment complex. At the LinkedIn offices in Dublin, Ventilux supplied a DALI-controlled intelligent addressable emergency lighting testing solution while at Liverpool One, the company supplied a NETCOM5 XP intelligent addressable emergency lighting testing solution.

Both systems allow the system to be supervised, tested and monitored from a central location, meaning the maintenance engineer does not need to physically/visually check all emergency luminaires on a weekly basis, as is currently required under EN50172 legislation. The also allow the site to be tested in non-working hours, hence less disruption to the work environment. The DALI system at LinkedIn offers a modular design that allows both small and large installations to be competitively specified while an Open Protocol means that other DALI emergency lighting products to be used on the system. The Netcom 5 XP system at

Liverpool One operates on a Master-Slave protocol. The Control Panel is the Master which controls, monitors and reports on the complete emergency lighting installation. The Control Modules are secondary masters linked to the central Control Panel via Ethernet Hubs and provide an Ethernet/CAN gateway to the Nodes.



LIGHTING DESIGN SERVICE

The solutions at LinkedIn and at Liverpool One were created by the Engineering Design Department at Ventilux.

The company prides itself on the flexibility of solutions offered by a department that consists of technically expert engineers who are all highly trained graduates dedicated to developing cost effective emergency lighting designs.

In order to achieve the best results, Ventilux utilises state-of-the-art design software platforms like CAD/Dialux/Relux to provide efficient

lighting designs. The company can also offer a pre-design walk on site (if required). The client would be provided with a Dialux report which enables them to get a clear indication of various light intensity and Lux level requirements. The designs are modelled in Dialux platform (2D & 3D) and then regenerated in Auto CAD (2D). The team also makes sure all designs for projects across the world meet the required standards, including Irish Standards (NSAI-I.S 3217.2013 + A1:2017), British Standards (BS 5266); Qatar Civil Defence (QCD); and UAE Standards (NFPA 101).

Ventilux engineers have completed the QQI Level 6 certificate training in Emergency Lighting Design and Commissioning while Ventilux has the ability to project manage small, medium and large projects from design phase, to commissioning and handover.

The expertise of the company's specialist engineers provide technical assistance at all times to ensure complete peace of mind.

T: (RoI) 01 214 8800 or (NI) Tyrone Campbell on 07715 213991

E: (RoI) sales@ventilux.ie or (NI) tyrone@ventilux.ie

www.ventilux.com

PROGRAMMABLE OPTIONS AVAILABLE THROUGH THE FREE DANLERS EASYZAPP OR CONTROL APPS...

Simply saving energy with DANLERS High Bay PIRs

DANLERS range of High Bay PIR occupancy switches is ideal for energy-saving lighting control in areas such as factories, storage aisles, sports halls and entrance halls. The products detect a person moving within the detection area and control the lights accordingly. Each product includes an adjustable time lag function plus and adjustable photocell. There are versions for simply switching the lighting load on/off, as well as products for DALI, DSI or 1-10VDC ballasts, which automatically dim or brighten the lights in response to changes in the ambient light level. The products either come with manual adjustment or as versions

which are programmable using the FREE DANLERS 'EasyZAPP' or 'ControlZAPP' apps on an Android phone or tablet. This latest range of High Bay PIR controls offers a choice of detection patterns to give optimum coverage for a multitude of high bay applications. The products are available in one of two housing options. The surface-mounted versions can be mounted directly onto a ceiling or mounted



onto a wide variety of back boxes. The batten mount versions are designed for mounting onto lighting battens via a 20mm knockout.
 T: 0044 (0)1249 443 377
 E: sales@danlers.co.uk
 www.danlers.co.uk



NEW Controls for Simply Saving Energy

DANLERS Limited have recently launched an extensive range of reliable, easy to install, controls for Lighting and HVAC including:

NEW HIGH BAY CONTROLS An extensive range of controls suitable across a wide spectrum of high bay applications.

NEW EASYZAPP SWITCHING CONTROLS Remotely programmable PIR Occupancy switches by mobile phone / tablet from up to 100m away. Standard ceiling flush or surface mount and high bay mounting options.

NEW EASYZAPP DIMMING CONTROLS Remotely programmable controls suitable for either DALI, DSI or 1-10VDC dimmable ballasts. Easy to install, easy to configure. Standard ceiling flush or surface mount and high bay mounting options.

NEW DAYLIGHT LINKED DIMMING PIR SWITCHES With adjustable run-on for lower light level when areas are not occupied. Versions for DALI or 1-10VDC ballasts. Standard ceiling flush or surface mount and high bay mounting options.

CONTACT US FOR THE LATEST DETAILS.

DANLERS

DANLERS Limited, Vincients Road, Chippenham, Wiltshire, SN14 6NQ U.K.
 Tel: 01249 443377. E: sales@danlers.co.uk
www.danlers.co.uk



MANUFACTURERS & SUPPLIERS OF:

- MCC Boards
- Form 2 & 4 Distribution Boards
- Variable Speed Drives
- PLC Control
- Multi-metering Cabinets
- Energy Measurement
- Power Factor Correction
- Plus much more









• NO OBLIGATION QUOTATION • FREE DELIVERY

Unit 2A Milltown Business Park, Co Monaghan
 T: 00353 47 72265 - E: info@troypanels.com
www.troypanels.com

DES DUGNAN, SALES & PROJECTS DIRECTOR, EXPLAINS WHY CONTRACTORS SHOULD BE LOOKING AT THE SIMPLICITY OF INSTALLING THE AONE™ - POWERED BY GOOEE® - SMART LIGHTING PLATFORM...

Simple steps to smart lighting

When we think of lighting control systems, expensive, time consuming and complicated installations come to mind. But smart lighting needn't be hard to understand or to install. Contractors who are looking to propose or set up a smart lighting system perfect for residential and light commercial applications, that is easy to install, offers several benefits from scheduling and grouping to remote management, and is extremely cost effective can direct their customers to the AOne system. The AOne offers individual smart device control, as well as circuit control using existing luminaires. It brings additional functionality such as dimming control, creating a 'space',

setting a schedule in a dimmed state such as '7am lights on at 20%', and controlling lights while off premises for security. With the AOne, smart devices can still be controlled offline in the event of your internet connection going down - a great feature over some others! Controllable through a free IOS or Android app on a mobile device, it is one of the most simple, smart, and cost effective solutions out there. Aurora's 4 Simple Steps are part of the company's free AOne Smart Installer Training programme taking place across the country. This will show electricians and installers exactly how a Aurora Smart Lighting system works and how it can be installed in 4 simple steps. You'll gain



all the necessary info to become an expert smart lighting installer.

T: Des Duignan on 00353 8342

06847/00353 1 696 8028

E: des.duignan@auroralighting.com

or smart.installer@auroralighting.com

W: www.auroralighting.com



4 SIMPLE STEPS to Smart Lighting



1
DOWNLOAD APP



2
CONNECT HUB



3
INSTALL ZIGBEE DEVICES



4
TAKE CONTROL

works with





Works with



Are you a qualified electrician interested in training on Aurora's AOne™ Smart range?

AURORA SMART INSTALLER

Email the Aurora Smart Training Team:
smartinstaller@auroralighting.com

Tel: 00353 1 6968028

auroralighting.com 



DEMESNE ELECTRICAL opens super-branch

THE EXPANSION OF THE COMPANY'S DUNGANNON FACILITIES FOLLOWS A RECORD YEAR...

Demesne Electrical has expanded the company's Dungannon facility to create a new super-branch.

One of Ireland's largest electrical distributors of industrial control, automation, energy-saving and installation products, the expansion at the Ballysaggart Business Complex has created an additional 50% storage for Demesne's extensive product range. The move follows last year's decision to close the company's Belfast branch and centralise operations in Dungannon. However, Demesne Electrical is keen to stress that the change has not affected the company's ability to meet customer demands, with next-day delivery guaranteed across Northern Ireland. "The change has allowed us to centralise and expand both our stock levels and our staff in Dungannon,"






“Our customers work right across the UK and Ireland, so they want a supplier they can rely on. That reliability is what our reputation has been built on.”



explained Chris McKenna, Northern Ireland and UK Sales Director. “We had a record year in 2018 and we’re building from a strong position, so the creation of this super-branch is a positive step forward. “Our main customer base is heavy industry, including the manufacturing, engineering and quarrying sectors, and as this is particularly strong in the Tyrone area, our location and the addition of our new mezzanine flooring to increase stock levels will help us meet the growing demands for our products.” Demesne Electrical’s reach, however, extends right across the UK and Ireland, with the company operating successful branches in Dublin and Cork. This will ensure that, regardless of the Brexit outcome, Demesne Electrical can continue to deliver. The company’s online shop – which was launched in 2016 – continues to be a success, with orders coming from all over the UK and Ireland as well as from a growing international customer base. “We continue to develop new ways to improve and to react to customer needs,” added Chris. “Our customers

work right across the UK and Ireland, so they want a supplier they can rely on. That reliability is what our reputation has been built on.” Carrying an extensive range of products, the company is mostly an exclusive distributor and stockist for some of the industry’s leading brands, including Schneider Electric, DEHN Lighting and Surge Protection, Lapp Cables, ILME Connectors, Brady Lockout/Tagout, Katko Isolators and Switches, Klauke and Greenlee Tooling and Delta Power Supplies, amongst others. Demesne Electrical’s extensive electrical product range is one of the most technically advanced in the marketplace, and this is further boosted by the company’s attitude towards product training, staff motivation and the implementation of modern technology. Expert and knowledgeable staff are on hand to offer product advice, while additional services such as a free, no obligation lighting survey is another reason why customers continue to turn to Demesne Electrical.



Electrical Control, Switchgear
& Energy Saving Specialists

Dungannon
Unit 14, Ballysaggart Business Complex
8 Beechvalley Way
Dungannon
BT70 1BS
T: 028 8772 5033

Dublin
The Square Industrial Complex
Tallaght
Dublin 24
D24 ED71
T: 01 4047700

Cork
25 Euro Business Park
Little Island
Co Cork
T45 HP92
T: 021 4355440

www.demesne.co.uk

IDH Cables Limited



THE ULTIMATE IN ENHANCED FIRE RESISTANT CABLES

KILFLAM 3000™
FIRE RESISTANT CABLES



[QUALITY IS IN OUR CULTURE]

MARKET LEADER IN 201B CPC INSULATED EARTH CABLE
IS201B LOW SMOKE ZERO HALOGEN

201B™ FUMEGUARD™

LOW SMOKE HALOGEN FREE CABLES

NEW IRISH STANDARD SAME SIZE CPC INSULATED EARTH



IDH Cables Limited Millbanks, New Ross, Co. Wexford, Ireland

Phone 00 353 (0) 51 421 405 Fax 00 353 (0) 51 421 927 Web www.idh.ie Email sales@idh.ie

We have supplied cables for many prestigious projects including the Tullamore Distillery, Adare Manor, the Aviva Stadium & Center Parcs in Ireland; Burj Al Arab in Dubai; the Millennium Dome, Canary Wharf & Ascot in the UK.



REGULATIONS AND STANDARDS - **APPROVED CABLES INITIATIVE**

INDUSTRY URGED TO CHECK STOCKS AND SEND SUSPECT SAMPLES FOR TESTING...

ACI delivers winter warning on arctic grade flexibles

The Approved Cables Initiative (ACI) is advising contractors and distributors to check their cable choices carefully following the discovery of significant quantities of substandard arctic grade flex.

Early December has seen a continuation of the problem with suspected substandard arctic grade flex found on a central London installation where the cable caught fire. The ACI is renewing its call for a sample of suspect cable to be sent to it for testing as soon as it is discovered.

Market surveillance during 2018 detected failures on numerous examples of arctic grade flexibles including pre-assembled industrial hook-up leads. These samples were purchased from a variety of sources including electrical wholesalers, DIY stores, online retailers and eBay stores.

Major concerns arose when ordinary duty flexibles (designed for indoor use to +5°C) were discovered coloured yellow, in what could be interpreted as a deliberate attempt to pass the cable off as an arctic grade flexible (designed for use at sub-zero temperatures and tested down to -40°C).



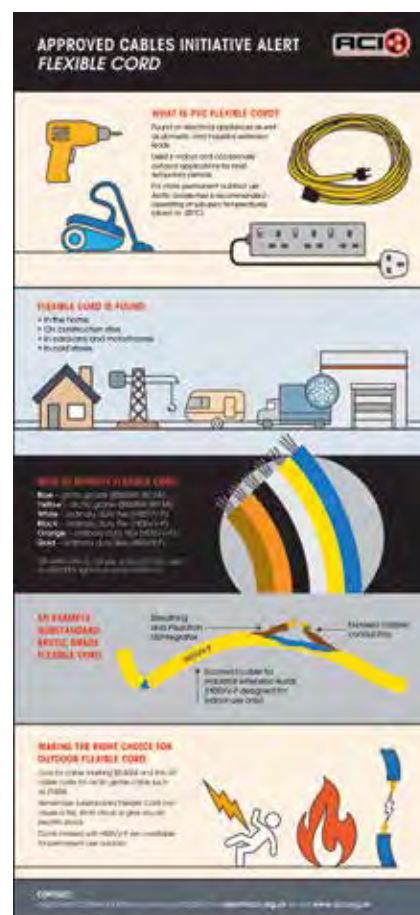
Suspected substandard arctic grade flex found on an installation where the cable caught fire.

The pre-assembled yellow leads, sold as industrial extension leads designed for use in harsh environments, incorporated cable clearly marked as H05VV-F (ordinary duty flexible). When subjected to the cold bend test as an arctic grade flexible, the cable failed to maintain its integrity; the sheath split open and insulation cracked, subsequently exposing what would be live copper conductors.

Arctic grade cable, which is predominantly yellow or blue in colour, is often used on construction sites and by caravan and motorhome owners to provide temporary outdoor power supplies and in some indoor applications such as cold stores.

Whilst it is normal to have different colours of H05VV-F flexibles (such as white, black, orange and gold), yellow and blue are commonly associated with arctic grade flex and these substandard products could lead end-users to use cable unsuitable for their intended purpose. Suppliers and end users, who need cable suitable for outdoor use in the cold, should look for the cable marking 'BS 6004' and the UK cable code for arctic grade cable, such as '3183A'. Cables marked with 'H05VV-F' are not intended to be suitable for such use.

Independent testing by ACI of arctic grade flex has shown cables exhibiting poor conductor resistance with sheathing and cable insulation disintegrating when subjected to a cold bend test. This problem could result in a fire, short circuit or an electric shock.



Peter Smeeth of the Approved Cables Initiative said, "The harsh environment in which these cables should operate means they need to be able to withstand forceful treatment and contractors need to know their cable choice is safe and suitable for its application. The ACI has campaigned extensively on this issue and recently we launched an infographic to help understanding.

"The ACI continues to monitor the market place but we need distributors and contractors to check their stocks and ensure their cables comply. They should look for cable markings and third-party independent approval of all purchases. If they are in any doubt, they should contact us immediately."

For further information on how to send samples for testing or for cables advice, e-mail info@aci.org.uk or visit www.aci.org.uk

DUNGANNON ELECTRICAL WHOLESALE



dungannonelectrical.co.uk

**CONTROL
TECHNIQUES**

**AUTHORISED
DISTRIBUTOR**

IN-HOUSE SOFTWARE & TECHNICAL SUPPORT AVAILABLE

C300 DRIVES 0.55kW – 110 kW IN STOCK

SERVO APPLICATIONS AVAILABLE ON REQUEST



REGULATIONS AND STANDARDS - **BASEC**

HOW DO THE CHANGES IN WEEE REGULATIONS AFFECT THE CABLES MARKET?

Changes to WEEE Regulations

This year sees the implementation of new regulations for the handling of waste electrical and electronic equipment. The WEEE Regulations, in force for certain products since 2006, have been updated, revised and responsibilities extended.

WHAT IS WEEE COMPLIANCE?

Under the regulation, producers of WEEE products are obliged to participate in recovery and recycling schemes aimed at reducing the amount of end of life electrical and electronic equipment entering the waste stream. Producers must make declarations about the amount of product recovered from consumers, aiming at a mass balance. In some cases where products contain valuable materials or components, such as copper in cable, existing recycling systems can be very effective in minimising the amount of product that is landfilled. Cross-Europe targets for the amount of WEEE to be recovered vary between 65% and 85% of product supplied into the market, which is substantial and challenging.

WEEE CATEGORY CHANGES

Prior to August 15, 2018, WEEE applied to products in 11 categories, but this has been simplified to six broader categories. Cable supplied for various uses will fall under the requirements, but the responsibilities



“Under the regulation, producers of WEEE products are obliged to participate in recovery and recycling schemes aimed at reducing the amount of end of life electrical and electronic equipment entering the waste stream.”

may shift depending on how it has been supplied.

PRODUCER COMPLIANCE SCHEME

Producers must register with a scheme, which must collect and process WEEE at authorised treatment facilities. The evidence of this collection and processing is collected at the end of the year into a declaration made to regulators, which are the respective environment agencies in the UK nations. In the event of non-compliance, producers may be fined.

WEEE AND CABLE COMPLIANCE

Many cable manufacturers operate environmental management systems to ISO 14001, which can be certified by BASEC. These provide a structural framework within which aspects such as WEEE can be managed.

WEEE IN PRACTICE

In practice, electricians will not have direct responsibilities under the WEEE regulations and will still find a ready market for waste cable produced either during installation or replacement work. This is largely because of the value of the metals (copper, but also aluminium and steel) they contain. The changes in the latest regulations mean that a wider range of electrical equipment will need to be handled as WEEE.

BASEC is a recognised sign of assurance of independent cable testing and approval. As an independent body, BASEC has for nearly 40 years been a mark of reassurance to those specifying cable.

T: 0044 (0)1908 267300

E: mail@basec.org.uk

www.basec.org.uk

Cable management and power distribution



PVC & Aluminium Trunking



Conduits & Accessories



Fixing Systems



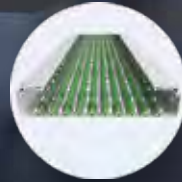
Underfloor



Ventilation



Cable Routing



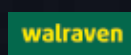
PVC Trays



Fire Protection

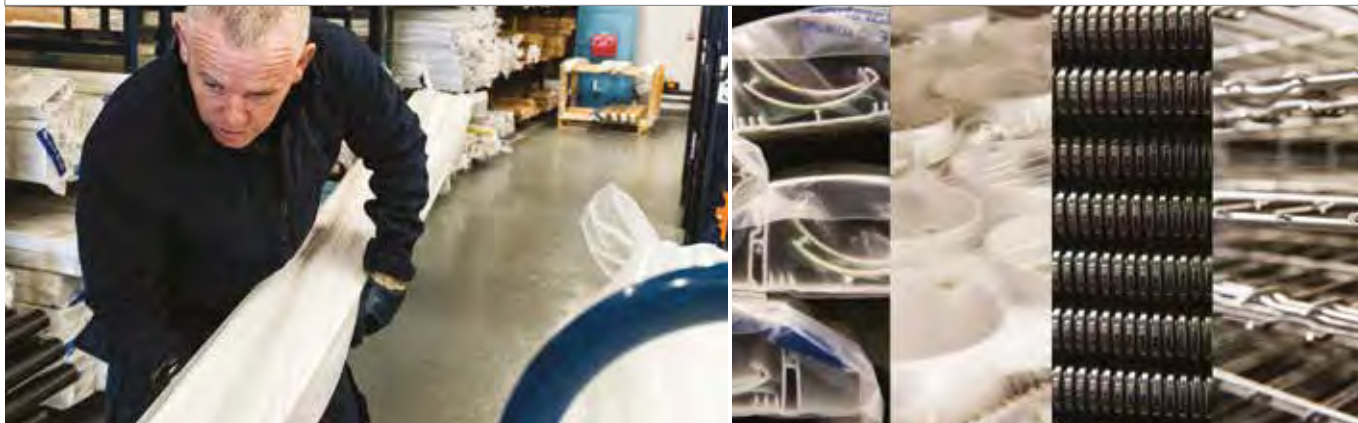
Offering market-leading electrical products, convenient warehousing facilities and premium distribution services since 1981.

- Exclusive quality products at competitive rates with leading European manufacturers.
- 65,000+ sq ft depot space located Dublin and Belfast.
- Quick quotation turnaround and delivery.
- Proficient logistical and technical support.



Distribution

DISTRIBUTOR - CORE



CORE DISTRIBUTES QUALITY CABLE MANAGEMENT AND POWER DISTRIBUTION PRODUCTS AND OFFERS SERVICES THAT HELP YOU BE MORE EFFICIENT...

Core Distribution - a trusted partner

Within the Core Group, Core Distribution sells and distributes premium electrical products, representing leading UK and European manufacturers across the island of Ireland. More than distributors, Core aspires to be your cable management and power distribution partners. Along with a vast offering of market-leading electrical products at competitive rates, Core provides convenient warehousing facilities, flexible collections and deliveries, proficient technical guidance and product training sessions. Electrical wholesalers, electrical contractors and OEM customers thus get full support to help them and their business be more efficient. The Core product range includes:

- **PVC-u trunking** - Versatility, quality and sustainability summarise the perimeter and dado trunking range sold by Core, which is manufactured with a minimum of 80% recycled material.
- **Aluminium trunking** - Core's wide range of multi-compartment aluminium trunking comes in different heights, designs, cable capacities and numbers of

compartments. It is very suitable for internal cable management distribution.

- **Conduit systems** - Ranging from round and oval PVC-u conduits to high impact conduits suitable for installation where LSOH and EMC are a requirement; and including flexible cable conduits and corrugated plastic conduits.
- **Fixing systems** - Innovative electrical fixings designed for reducing installation time.
- **Cable routing** - Clever multi-purpose tools that make cable routing easy, saving installers time and effort. The rods come in a variety of lengths and flexibilities.
- **Ventilation** - Contemporary low energy extract fans streamlined for improved airflow and available with a choice of interchangeable modules and coloured covers.
- **PVC trays** - Non-metallic trays ensure no electrical continuity and an electrical insulation for components. Resistant to UV radiation it is therefore an excellent solution for outdoor and hazardous installations.

- **Steel cable containment** - Trays, baskets and brackets enable to route, connect, support and protect cables in both internal and aggressive environments, helping reduce installation time while guaranteeing a flexible and high-performance installation.
 - **Fire protection** - A range of products designed to British Standard and European regulations, specifically suited for wiring fire alarm systems and for protection against fire.
 - **Underfloor** - High-quality busbar, floor boxes, floor grommets, cable hives. Fully compliant with BS7671 and BS6306 and available with RCD / RCBO protection options.
 - **Desk power** - In, on and under desk data, USB and power modules available with fast-charging type A and C USB ports.
 - **Accessory boxes** - Boxes and enclosures are manufactured with super high impact recycled PVC-U and compliant to British and European standards.
- Core (RoI): 01 453 7033
 Core (NI): 028 9002 0066
www.coreelectrical.com

MANUFACTURER - **MARCO**

New catalogues from Unistrut and Marco

Unistrut and Marco have introduced two new catalogues which together encapsulate the brands' complete electrical raceway offering. The new Unistrut brochure contains all of the signature Unistrut range, including the namesake Unistrut metal framing system. Unistrut is a leading supplier of metal framing systems, specialising in channel framing, cable management and prefabricated framing systems. The new brochure contains a complete guide to the Unistrut range, including the newly introduced off-site modular framing services, with Unistrut being one of the first manufacturers to offer the service. A wide range of cable management products, including the Unistrut cable tray, Unistrut cable ladder, and

the Unistrut metal trunking systems, are all represented, supported by each product's wide range of fittings and accessories.

The new Marco brochure contains all the products and services that customers have come to expect, with the entire range of cable management represented.

Marco's brochure also contains a number of new products recently added to the range, including uPVC Maxi trunking; pre-galvanised hook couplers for PG steel wire cable trays; 30mm earth terminals; and left and right-hand side twin-switched floor box plates

As well as introducing new products, Marco has also taken a leaf from Unistrut's brochure and developed



its prefabricated and modular offering, with further improvements to increase the firm's capacity to supply a prefabricated range. Almost all of Marco's PVC products, as well as the aluminium bench trunking, are now available as prefabricated solutions.

For your copies, visit www.marco.com or www.unistrut.co.uk

UNISTRUT®
marco
 cablemanagement

A PART OF **atkore**
 INTERNATIONAL

**Complete Solutions,
 From Raceway's
 Number 1**

RACEWAY. YOUR WAY.™

DISTRIBUTOR - **PRECISION CABLES**

Cable installations and fire safety – the importance of fixings

Recent high-profile incidents have thrown the spotlight on the need to ensure fire safety is a prime consideration in the design of both commercial and residential buildings.

It seems an odd situation to find a contractor buying a premium, high performance cable, but compromising the integrity of the installation as a whole by the use of substandard accessories.

As a cable system provider of both cables and accessories, Prysmian Group recognises that the performance of any installation relies just as much on the quality of the lower value accessory as of the cable.

“We know from our own distribution

throughout Ireland that demand for high-quality, fire-resistant cable is strong but we have noted that there is less understanding of the quality issues surrounding accessories - the fixings, glands and connectors that are essential to ensure a cable installation performs as anticipated in the event of a fire,” according to Fergus O’Callaghan, Managing Director, Precision Cables.

Prysmian Group would always recommend to use cable and accessories from a single manufacturer as there is then an assurance that the entire system

will be designed to function as an integrated whole and will not be compromised by a single weak link. The BICON® range from Prysmian is manufactured to British, European and international standards and are the result of over 100 years of cable accessory development and quality engineering.

Prysmian and BiCon products are available in Ireland from Precision Cables.

For more information, telephone 00353 (0)42 933 1436 or visit www.precisioncables.ie



FP
200
GOLD

FP
PLUS

‘Prysmian is delivered to you in Ireland by Precision Cables’

www.precisioncables.ie T: +353 42 933 31436 sales@precisioncables.ie



**ALL BRITISH MADE • TOP QUALITY • COLOUR CONSISTENCY GUARANTEED
OUTSTANDING SERVICE • FULL RANGE OF COLOURS AND SIZES AVAILABLE**

TRI-RATED CABLE

**UL AND CSA APPROVED
BRITISH MANUFACTURED**

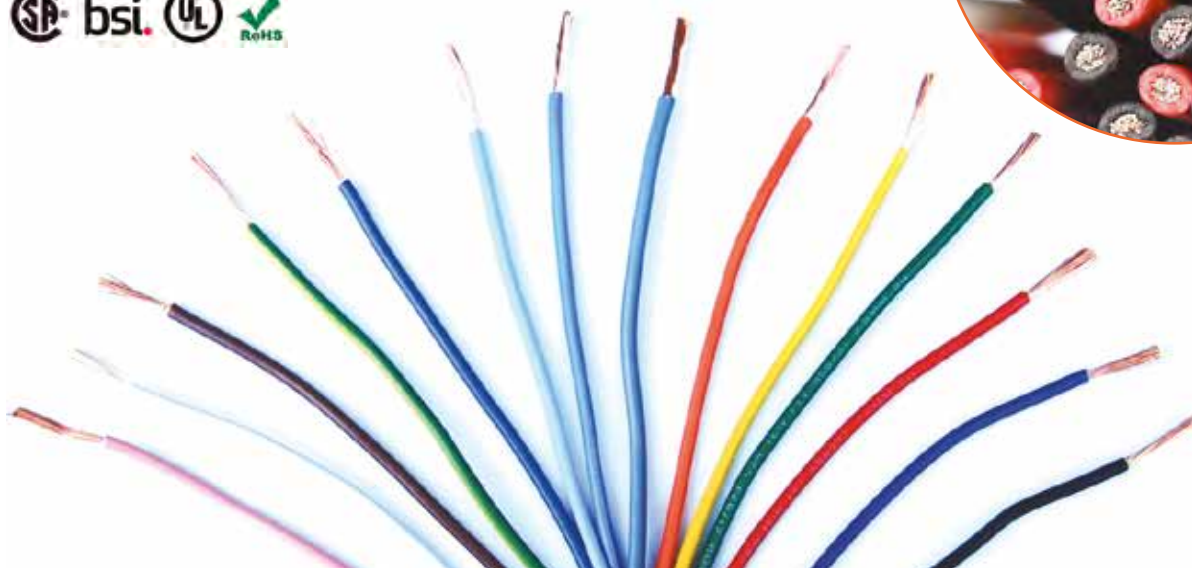
SUPERFLEX –

**EXTRA FLEXIBLE TRI-RATED CABLE
BRITISH MANUFACTURED**

Also major stockist of:

2491X, 2491B

Double Insulated Tri-rated cable
and Def Stan cable



**Call: 0044 (0)161 629 9333 - Fax: 0044 (0)161 629 9444
E-mail: sales@clyndercables.co.uk - www.clyndercables.co.uk**

MANUFACTURER - **ESSENTRA COMPONENTS**

Managing cable entry in hazardous atmospheres

Keeping order in electrical installations and enclosures is an important factor when considering parts to use, but what happens when the application requires a little more than basic dust ingress and water protection? Creating an enclosure that is flameproof in the case of ignition is one option but alternatives to this can be easier and more cost effective to produce, especially for circuits that can operate with low currents and voltages. Enclosures with intrinsic and increased safety, limit electrical and thermal energy to safe levels, below those which would cause ignition of an explosive material. In case a fire should start, although the components are not necessarily resistant to flames, an intrinsic

enclosure will eliminate, or greatly reduce, the chance of a fire starting in the first place. Inevitably, in these applications there will need to be points of entry and exit, often in the case of cables running into and out of the enclosure. ATEX certified cable glands for increased safety enclosures allow for the entry of cables without compromising on safety in hazardous atmospheres. These cable glands are constructed in such a way to prevent any sparks or hot surfaces under normal and abnormal



conditions that could cause explosion. For other cable entry solutions, where multiple cable entry is required, IP65 and IP66 rated cable entry plates allow for tool free connecting of cables to machines and equipment. These are suitable for use with various cable glands of choice to maximise safety and adherence to protection requirements.

For more information on cable entry products contact Essentra Components.

T: 00353 (0)1 806 2266

E: sales@essentracomponents.ie



Manage Your Cables

Manufacturing in the UK and 11 other sites globally, Essentra Components combines the expertise and flexibility of a manufacturer with the service and range of a distributor. With 75 years of experience in products including cable management, spacers, supports and circuit board hardware, fan accessories, cable terminals and more, we know what matters to you.

Contact your new Dublin office

📞 01 806 2266

✉️ sales@essentracomponents.ie

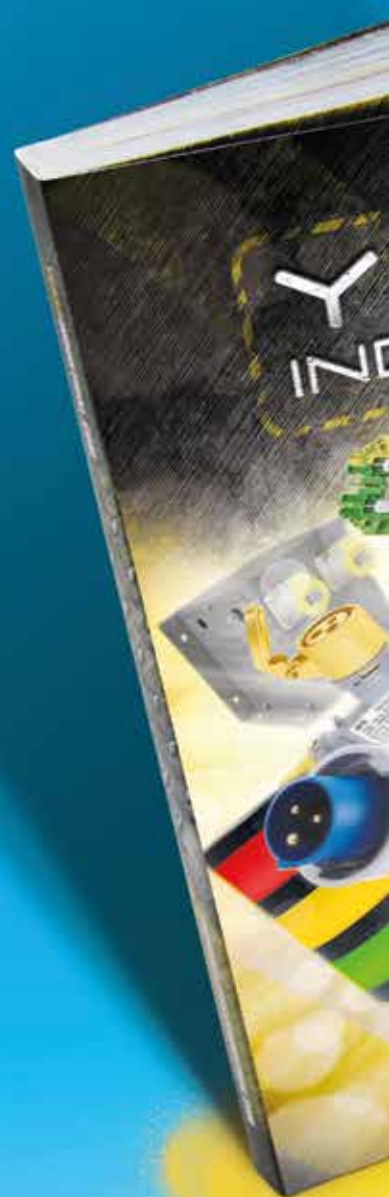
-  FREE SAMPLES
-  FAST DESPATCH
-  MORE CHOICE



www.essentracomponents.ie

MAKING IT EASIER

Whether OFFLINE or ONLINE, YESSS has all the tools for the job!



INDUSTRIAL SERVICES AND SUPPORT

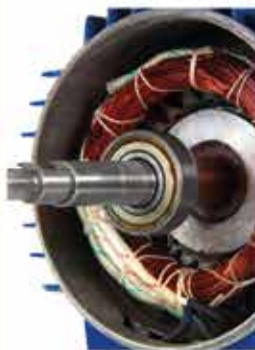
In the increasingly complex world of industrial automation, YESSS is committed to help our branches service this sector... with a team of specialists, who can be contacted directly, to advise on industrial control gear requirements.

See YESSS Industrial catalogue for more information

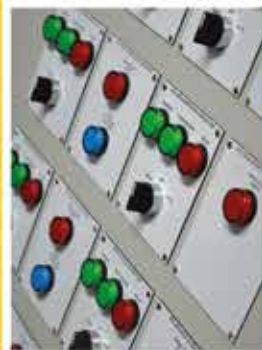
INDUSTRIAL ELECTRONIC REPAIRS



MOTOR AND REWINDS



SPECIAL PANEL BUILDS



YESSS
ELECTRICAL

Your personal account
manager just got even better.

Make payments, request quotes, with improved searching and a brand new look. Get the latest version of the YESSS App now.



BALLYMENA
028 2563 6758
ballymena@yesss.co.uk



YESSS INDUSTRIAL

INDUSTRIAL to the CORE
Packed full of quality products



THE YESSS BOOK

5th Edition
2018

Quality Products. Great Prices.
Electrical Essentials.

Smart Homes and Data section
Covers: Lights, Thermostats
and sensors. Products for
the modern living space.
See page 314

- Lamps & Tubes Page 10-22
- Light Fixings Page 30-37
- Wiring Accessories Page 38-79
- Switchgear & Distribution Page 80-113
- Cable & Cable Management Page 114-133
- Smart Meters Page 134-145
- Heating & Ventilation Page 146-157
- Fire, Security & Access Page 158-207
- Industrial Safety Page 208-213
- Tools & Equipment Page 214-240
- Field & Service Page 241-257



SPECIAL TRANSFORMER BUILDS

OBSOLESCENCE MANAGEMENT

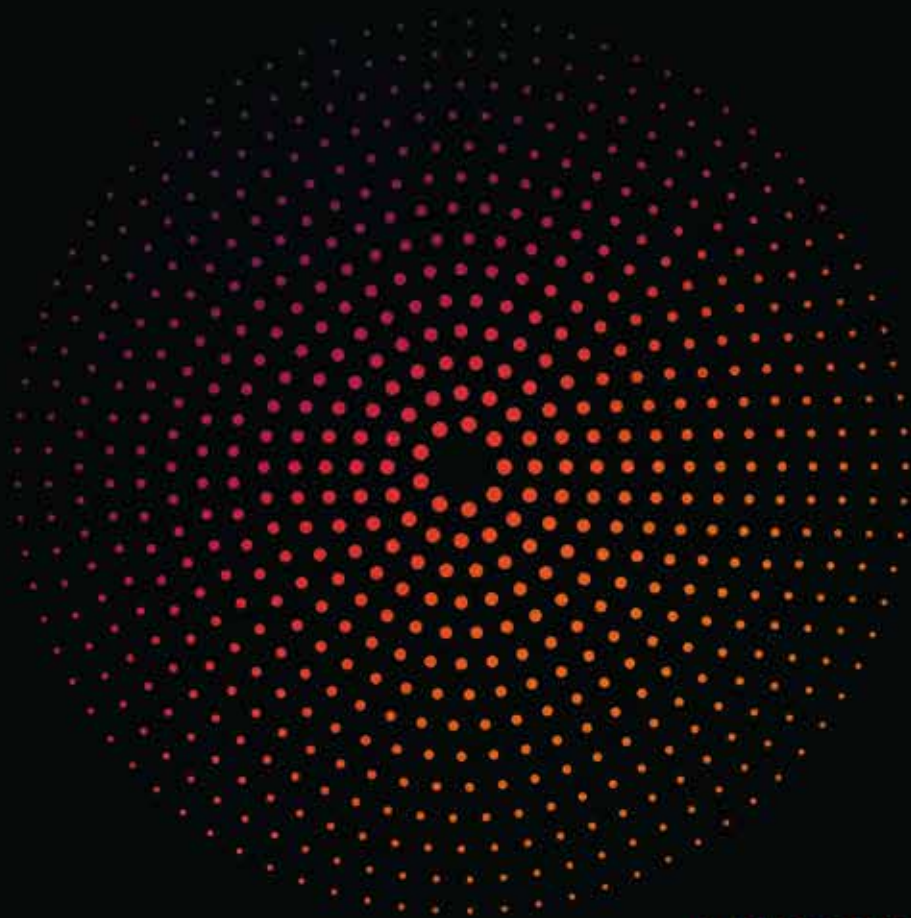
LASER ENGRAVING

INDUSTRIAL CALIBRATIONS

ENERGY SAVING SURVEYS AND SOLUTIONS

BELFAST EAST 028 9070 7928 belfast.east@yesss.co.uk	BELFAST NORTH 028 9078 2098 belfast.north@yesss.co.uk	COLERAINE 028 7032 2618 coleraine@yesss.co.uk	CRAIGAVON 028 3836 7668 craigavon@yesss.co.uk	LISBURN 028 9260 6758 lisburn@yesss.co.uk
--	--	--	--	--

ROBUS®



LIGHT THAT MOVES YOU

NEW ROBUS 2019 CATALOGUE - OUT NOW



Over 400 Pages

Featuring new **ROBUS** Vegas LED Flexi-strip, Ultimum Downlight and Axis LED Linear Trunking Ranges

AVAILABLE NOW FROM ALL GOOD ELECTRICAL WHOLESALERS

ROBUS BY LED GROUP
NANGOR ROAD
DUBLIN 12
D12E7VP
IRELAND

T. +353 1 709 9000
F. +353 1 7099060
E. INFO@ROBUS.IE
ROBUS.COM
ROBUSDIRECT.COM

TRUST
ROBUS®

LED GROUP EUROPE · AUSTRALIA · ASIA · MIDDLE EAST · AFRICA

NEW RULES FOR LABOURER AND MANAGER CARDS...

Changes to ECS card criteria

New requirements are now in effect for all those renewing or applying for their first ECS Labourer and Manager cards. The ECS Labourer card has been replaced with a new ECS Electrical Labourer and has new criteria, which includes either holding a JIB-approved theory qualification, such as the C&G 2365, 2330 or 2360 (or EAL equivalents), as well as the ECS Health, Safety & Environmental Assessment. If a JIB-approved theory qualification isn't held, the applicant must complete a recognised health and safety course such as CCNSG Safety Passport or IOSH Working Safely, and provide proof of employment in the electrical industry. Those applying for or renewing

their ECS Manager card must either meet gold card criteria, or hold a Level 4 or above management qualification such as BTEC, degree or JIB-recognised company programme. In both instances they will also need to complete a specified health and safety course such as the Site Supervisor Safety Training Scheme (SSSTS), Site Management Safety Training Scheme (SMSTS) or IOSH Managing Safely in Construction, as well as the ECS Health, Safety and Environmental Assessment. The changes have been introduced to align with new qualification requirements led by the wider construction industry.



"The changes have been introduced to align with new qualification requirements led by the wider construction industry."

For full details on the Labourer and Manager card changes and approved health and safety courses visit www.ecscard.org.uk/labourer or www.ecscard.org.uk/manager

SHINE A LIGHT ON YOUR GOLD STANDARD

Do you hold an ECS Installation or Maintenance Electrician card and the current edition of the Wiring Regulations?

Get recognised as an **ECS Registered Electrician**.

Why become a Registered Electrician?

- Get a well-deserved endorsement for your professionalism and skills
- Increase your status and credibility in the industry
- **No extra cost** for existing cardholders

BS7671:2008 and BS7671:2018 are both accepted until 31 Dec 2018. After this date only BS7671:2018 will be accepted for a Registered Electrician application

For more information visit:
www.registeredelectrician.uk

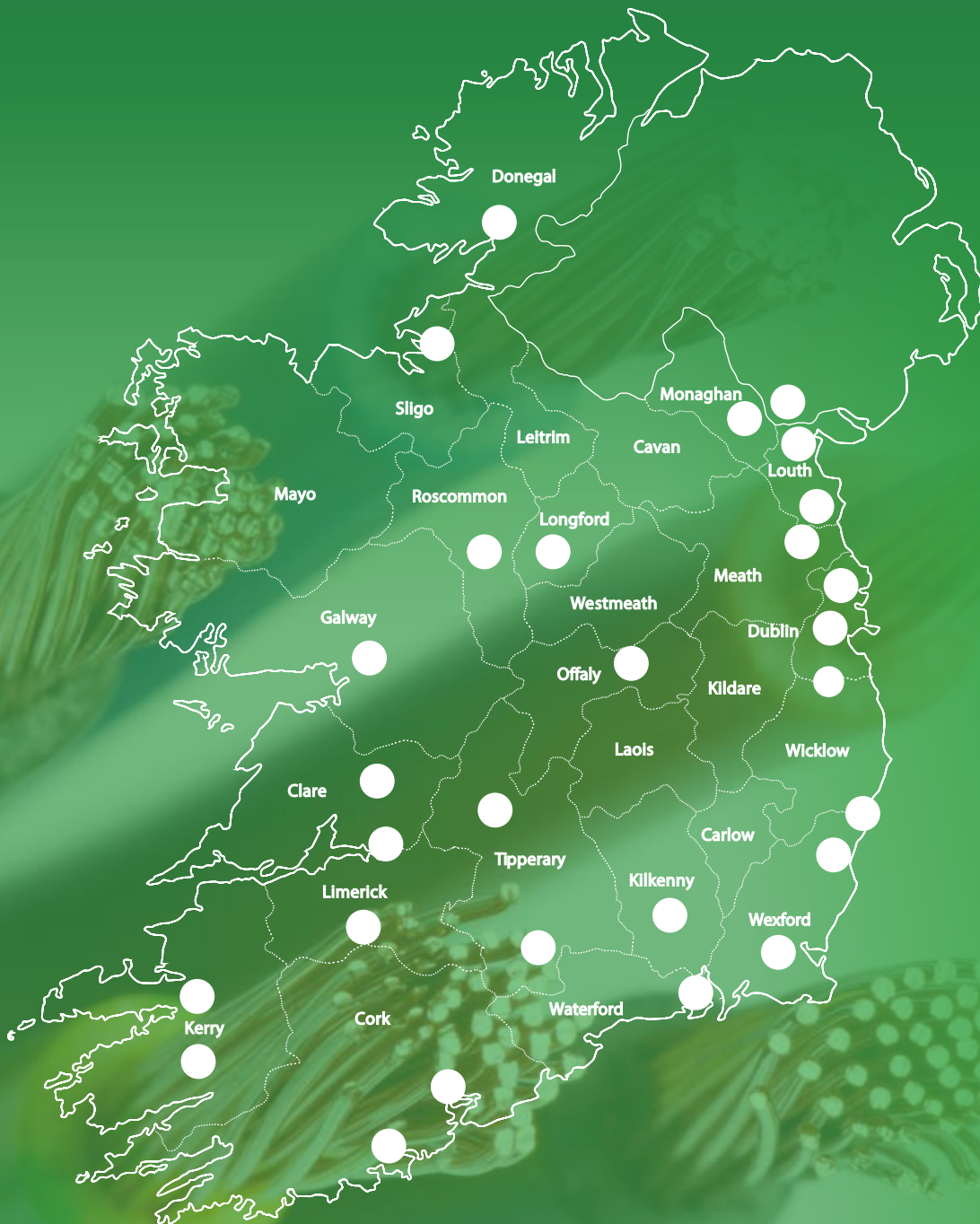
electrotechnical certification scheme

**SMALL THINGS
BIG DIFFERENCE**



THE IRISH ELECTRICAL BUYING GROUP

28 BRANCHES NATIONWIDE



**ABBEY ELECTRICAL SUPPLIES
DONEGAL**

Unit 6, Drumlougher, Donegal Town,
Co Donegal
T: 00353 (0)74 972 2532
E: info@abbeyes.ie
W: www.abbeyes.ie

ARKLOW ELECTRICAL WHOLESALE

Castle Park, Arklow, Co Wicklow
T: 0402 32870
E: arklowelectrical@gmail.com

BELLEW ELECTRICAL DROGHEDA

Unit 12, Donore Business Park, Donore
Road, Drogheda, Co Louth
T: 00353 (0)41 984 6160
E: drogheda@bellew
electrical.com
W: www.bellewelectrical.com

BELLEW ELECTRICAL DUNDALK

Centenary Business Park, Coes Road,
Dundalk, Co Louth
T: 00353 (0)42 933 7450
E: dundalk@bellewelectrical.com
W: www.bellewelectrical.com

**BELLEW ELECTRICAL
CASTLEBLAYNEY**

Ballybay Road, Castleblayney,
Co Monaghan
T: 00353 (0)42 975 4575
E: castleblaney@bellewelectrical.com
W: www.bellewelectrical.com

**BELLEW ELECTRICAL
CROSSMAGLEN**

Unit 2, Cloughvalley Stores, Newry
Road, Crossmaglen, Co Armagh,
BT35 9BN
T: 0044 (0)28 3086 0830
E: crossmaglen@bellewelectrical.com
W: www.bellewelectrical.com

CLONMEL ELECTRICAL LTD

Unit 11J, Ard Gaoithe Business Park,
Cashel Road, Clonmel, Co Tipperary
T: 052 612 8072
E: tom@clonmelectrical.com
W: www.clonmelectrical.com

**BERNEY CROSSAN & SONS LTD,
T/A CROSSAN ELECTRICAL
WHOLESALE**

52 Main St, Longford
T: 043 334 6109
E: sean@crossan.ie

DERRY TAHENY ELECTRIC LIMITED

Lynns Dock, Sligo
T: 071 917 1434
W: www.derrytaheny.com

ELECTRICAL SUPPLIES LTD

Unit 3, Jamestown Industrial Centre,
Inchicore, Dublin 8
T: 01 473 1381
E: sales@esl.ie - W: www.esl.ie

ENNIS ELECTRICAL SUPPLIES LTD

Quin Road Business Park,
Quin Rd, Ennis, Co Clare
T: 065 682 9684
E: trade@enniselectrical.com
W: www.enniselectrical.ie

GOREY ELECTRICAL WHOLESALE

Ballyloughan Business Park, Arklow
Road, Gorey, Co. Wexford
T: 053 948 1636
E: goreyelectrical@gmail.com
W: www.goreyelectrical.com

MCK ELECTRICAL LTD

Unit PD1, Togher Industrial Estate,
Pouladuff, Cork
T: 021 497 5201
E: reception@mckelectrical.com
W: www.mckelectrical.com

MGF ELECTRICAL SUPPLIES LTD

Henry St. Roscommon Town
T: 090 662 5644
E: info@mgfelect.com
W: www.mgfelect.com

**N2 ELECTRICAL & SECURITY
SUPPLIES LTD**

Rath Cross, Ashbourne,
Co. Meath
T: 01 835 3090
E: sales@n2.ie
W: www.n2electrical.ie

PETER CURRAN ELECTRIC LTD

Unit 18, Glenrock Business Park,
Ballybane, Galway
T: 091 385 700
E: sales@curranelec.ie
W: www.curranelec.ie

SOUTH WEST WHOLESALE

Matt Talbot Road, Tralee, Co Kerry
T: 066 712 3399
E: southwestelect@eircom.net

TEF TULLAMORE LTD

Unit 3b, Burlington Business Park,
Tullamore, Co Offaly
T: 057 935 1893
E: sales@tef.ie

TRADEKIT

Ballycasheen Road, Killarney,
Co Kerry
T: 064 662 5340
E: killarney@tradekitdirect.ie
W: www.tradekitdirect.ie

**WEST CORK ELECTRICAL
WHOLESALE CO. LTD**

Industrial Park, Clogheen,
Clonakilty, Co. Cork
T: 023 883 4360
E: info@wcew.ie
W: www.wcew.ie

TRADE ELECTRIC KILKENNY

New Street, Kilkenny
T: 056 776 2498
E: kilkenny@trade-electric.ie
W: www.trade-electric.ie

TRADE ELECTRIC LIMERICK

Lower Gerald Griffin Street, Limerick
T: 061 417 754
E: sales@trade-electric.ie
W: www.trade-electric.ie

TRADE ELECTRIC NENAGH

Ormond Street, Summerhill, Nenagh,
Co. Tipperary
T: 067 31289
E: nenagh@trade-electric.ie
W: www.trade-electric.ie

**TRADE ELECTRIC NEWCASTLE
WEST**

Block B, Desmond Business Park,
Newcastle West, Co Limerick
T: 069 77971
E: ncw@trade-electric.ie
W: www.trade-electric.ie

TRADE ELECTRIC SANTRY

Swords Road, Santry, Dublin 9
T: 01 842 6055
E: santry@trade-electric.ie
W: www.trade-electric.ie

TRADE ELECTRIC STILLORGAN

1 Old Dublin Road, Stillorgan,
Co Dublin
T: 01 563 1830
E: stillorgan@trade-electric.ie
W: www.trade-electric.ie

TRADE ELECTRIC WATERFORD

Unit 4A, Six Cross Roads Business
Park, Kilbarry, Waterford
T: 051 591 666
E: waterford@trade-electric.ie
W: www.trade-electric.ie

TRADE ELECTRIC WEXFORD

Pinewood Business Park, Whitemill
Industrial Estate, Wexford
T: 053 914 7150
E: wexford@trade-electric.ie
W: www.trade-electric.ie

NEW CRIMP TECHNOLOGY ELIMINATES CARPAL TUNNEL SYNDROME IN THE ELECTRICAL INDUSTRY...

No repetitive strain injury with Klauke

Many cable crimping applications throughout the industry are conducted using manual ratchet tools or hand hydraulic tools. Depending on the number of operations conducted each day and the hand force required to close the handles of the tool, Repetitive Strain Injury (RSI) can result.

Looking to statistics available online, 29% of repetitive strain injuries will result in Carpal Tunnel Syndrome (CTS). In worst cases CTS can only be resolved with surgery, one hand at a time, resulting in employees being unable to work for six to eight weeks.

The new alternative to manual ratchet crimping tools for high volume, high force applications, is the Klauke Micro tool. This is an

electro-mechanical tool suitable for pre-insulated connectors (up to 16mm²), boot-lace ferrules (up to 50mm²), and CU tube lugs (up to 25mm²). The Micro provides a 90% reduction in hand load experienced

by the operator to help keep employees safe and maintain high productivity.

The Micro is less than 1kg and completes in excess of 300 crimps per charge in less than 1.5 seconds per crimp. As an intelligent tool, it ensures full closure of the jaws on every crimp and comes with the ability to link to Klauke iPress software, where quality records



can be downloaded and stored for improved traceability.

With cases of CTS within the industry on the rise, better, safer, more productive tool solutions available today, each employer has a duty of care to provide the most suitable tools to their employees.

T: 0044 (0)1986 891 519

E: Klauke-sales@emerson.com

W: www.klauke.com/micro/en

Ask for a demonstration today!

AVAILABLE AT

DEMESNE
ELECTRICAL

Electrical Control, Switchgear & Energy Saving Specialists

Times change.



www.klauke.com

And so do requirements.



Klauke® micro

The first electromechanical crimping tool with PowerSense technology.

The new Klauke micro combines the benefits of manual crimping tools with the convenience of battery-powered hydraulic tools.

Fast, light, efficient Klauke micro – the way you crimp today.



Klauke UK Ltd.
Hillside Road East, Bungay - Suffolk NR35 1JX, UK.
Phone: +44 (0) 1986 891519 • E-mail: Klauke-sales@Emerson.com

www.klauke.com iPress System

The Power of Partnership



LEADING MANUFACTURER CELEBRATES 100 YEARS IN BUSINESS...

Crabtree: 1919 to 2019 and beyond

One hundred years ago John Ashworth Crabtree designed and patented a quick make and quick break switch. This innovation, which safely managed electric arcs that can occur in switching devices, was the beginning of the philosophy that became the culture of electrical safety for Crabtree.

One hundred years later and Crabtree remain at the forefront of electrical safety, this time with digital technology in Arc Fault Detection Devices. Crabtree AFDDs automatically detect and disconnect arc faults and prevent fires occurring in electrical cables and final circuits, providing higher levels of safety for homes and workplaces. For a business that has weathered the storms of time, changed

ownership, evolved its working methods and, undoubtedly over 100 years, engaged many staff; one thing hasn't changed, and that is the drive for new product development – a vital ingredient in the success of the brand. We're now on the 18th Edition of the Wiring Regulations, but back when the 12th Edition of the wiring regulations was just being published in 1950, Crabtree had been operating for over 30 years. Mike Cash, Group Marketing & Channel Manager at Electrium, commented, "When Crabtree launched, we had a motto: That



which is built soundly endures well. It was inscribed onto the company plaque and rightly so. Crabtree was built soundly enough to provide 100 years of electrical safety for our customers. And with a 100-year solid foundation what else can we do in the years to come?" www.electrium.co.uk/crabtree

depend



unmatched
service

Ireland's leading distributor to
the Electrical Wholesale Industry

- Large stock holding
- Fast friendly service
- Prompt collection service
- Deliver to your customer – no problem!
- Technical expertise
- Delivery to 32 counties
- Irish owned






EDL ELECTRICAL DISTRIBUTORS

Distributors for:








EDL, Unit A2, Airton Park, Airton Road, Tallaght, Dublin D24 AY71
 Tel: +353 (1) 427 1444 Email: sales@edlireland.ie Web: www.edlireland.ie



**NEW
SERVICE**

Fully automatic. Fast, precise CNC panel production from AP Haslam

Our NEW Rittal Perforex BC 1007 HS is capable of manufacturing all your panel requirements.

Fully automatic CNC machining centre with fast throughput times and consistently excellent product quality.

- ▲ CNC programming ensures accuracy and repeatability every time, short or long runs.
- ▲ Drilling, Thread-tapping and Milling from over 20 preloaded tools.
- ▲ Aluminum, Steel, Stainless steel, Plastic, Copper.
- ▲ Call TODAY for a demonstration!



APHASLAM
WORKSHOP

14 Sunshine Industrial Estate, Crumlin Road, Dublin 12
Tel: +353 (1) 453 2522 | Email: sales@aphaslamm.ie

THE NEW PERFOREX MACHINE CUTS DOWN ON TIME AND INCREASES ACCURACY...

AP Haslam expands service and efficiency

AP Haslam has taken delivery of the Perforex BC 1007 HS from Rittal, adding to the speed and efficiency of the company's workshop when it comes to supplying enclosures for industrial and hazardous areas.

The arrival of the Perforex in AP Haslam extends the company's comprehensive range of solutions for panel building and switchgear engineering through key machining and handling technologies.

The Perforex machine enables hours of production work to be completed with increased speed, reducing the preparation time with its sophisticated software and preinstalled panel drawings.

As well as the enhanced time savings, Perforex delivers increased accuracy and reduced waste with its CNC precision-capabilities. The Perforex machine can include up to 20 tools in the magazine for operations including drilling, tapping and milling. Perforex can handle panels up to 3600x2300mm and, since programming is faster than manual marking, the system provides obvious advantages from big batches to a single item production.

Speaking as the machine was being installed, Mark Tyson, AP Haslam's Workshop Manager was looking forward to its advantages.



"The Perforex machine is extremely precise, and can be used for drilling, thread tapping, and milling, having this capability is a big leap forward for us and myself and Leon -our machine operator - are looking forward to showing our customers its capabilities"

T: 00353 (1) 453 2522
E: sales@aphaslam.ie



"The Perforex machine enables hours of production work to be completed with increased speed, reducing the preparation time with its sophisticated software and preinstalled panel drawings."



Atlas World

FIRE & SECURITY
Full suite of fire & security protection solutions

ENERGY
Energy management & renewable energy solutions

AUDIO VISUAL
Audio and visual Technology Systems

ASSISTIVE TECHNOLOGY
Systems designed to make living independent easier

Protecting
Sustaining
Connecting
Maintaining
Your World

028 9039 1000
atlasworld.co.uk










Beacon
FIRE & SECURITY (NI) LIMITED

TOTAL SOLUTIONS

ALWAYS PUTTING
ELECTRICAL CONTRACTORS FIRST

- CCTV
- INTRUDER ALARMS
- INTERCOM
- FIRE DETECTION
- NURSE CALL SYSTEMS
- ACCESS CONTROL
- DOOR ENTRY
- SMOKE CLOAK
- MONITORING SERVICE
- WARDEN CALL
- FIRE EXTINGUISHERS

Beacon

BEACON FIRE & SECURITY (NI) LIMITED
15 The Crescent Business Park, Ballinderry Road, Lisburn, County Antrim, BT28 2GN

T: NI - 028 9267 6622
Rol: 048 9267 6622
E: info@beacon-ni.co.uk
www.beacon-ni.co.uk





NORTHERN IRELAND'S
LEADING SUPPLIERS TO THE ELECTRICAL
TRADE NOW LOCATED AT:

NEWRY
Unit 4, Campbells Yard, Belfast Road, Newry BT34 1QH
T: +44 (0)28 3083 4050
E: newrysales@centuryelectrical.co.uk
Sat: 9.00am - 12.00pm

BELFAST DUNMURRY
207 City Business Park, Dunmurry, Belfast BT17 9HY
T: +44 (0)28 9061 8666
E: belfastsales@centuryelectrical.co.uk
Sat: 9.00am - 12.00pm

BELFAST EAST
Unit B1 Portview Trade Centre, 310 Newtownards Road, Belfast, BT4 1HE
T: +44 (0)28 9045 1056
E: belfasteast@centuryelectrical.co.uk
Sat: 9.00am - 12.00pm

BELFAST NORTH
Unit 3, Coastal Warehouse 83 Dargan Road, Belfast BT3 9JU
T: +44 (0)28 9077 1950
E: bns@centuryelectrical.co.uk

COOKSTOWN
Sandholes Road, Kilcronagh Business Park, Cookstown BT80 9HG
T: +44 (0)28 8676 2626
E: cookstownsales@centuryelectrical.co.uk
Sat: 9.00am - 12.00pm

ENNISKILLEN
Killyhevlin Industrial Estate, Enniskillen, Co. Fermanagh BT74 4EJ.
T: +44 (0)28 6632 6555
E: enniskillsales@centuryelectrical.co.uk

SRK EQUIPMENT CO

COLERAINE
31 Ardreagh Road, Coleraine BT51 4DN
T: +44 (0)28 7086 8305
E: info@srkequipment.com
E: coleraine@centuryelectrical.co.uk
Sat: 9.00am - 12.00pm

LISBURN
1b Altona Industrial Estate, Altona Road, Lisburn BT27 5QB
T: +44 (0)28 9260 5455
E: lisburn@centuryelectrical.co.uk
Sat: 9.00am - 12.00pm

OPENING HOURS:
Mon - Fri 8.00am - 5.00pm

**QUALITY PRODUCTS
COMPETITIVE PRICES
EXCELLENT DELIVERY SERVICE**

www.centuryelectrical.co.uk



CELEBRATING 25 YEARS
1993 **BM** 2018
Electrical Wholesale Limited
SALES & SERVICE

YOUR LOCAL INDEPENDANT
ELECTRICAL WHOLESALER

HEAD OFFICE
Ballycastle Road Industrial Estate,
Ballycastle Road, Coleraine
T: +44 (0)28 7032 0888
F: +44 (0)28 7032 0770

BRANCHES
Pennybridge Industrial Estate, Ballymena
T: +44 (0)28 2565 4000
F: +44 (0)28 2565 5000

Unit B2 Balliniska Business Park,
Balliniska Road, Derry
T: +44 (0)28 7136 8822
F: +44 (0)28 7136 8833

sales@bmelectricalwholesale.co.uk






www.bmelectricalwholesale.co.uk



CEF
city electrical factors



For Everything
Electrical...

SLIGO Unit 9&10 Duncans Island, Finisklin, Co Sligo.
T: (071) 9151820

DUBLIN 94-96 Middle Abbey Street, Dublin 1.
T: 01 8788180

LETTERKENNY Unit 2, Kiltroy, Letterkenny, Co Donegal.
T: (074) 9106100

CASTLEBAR Unit 10 Castlebar Business Park, Breaffry Road, Castlebar, Co Mayo. T: (094) 9027196

FINGLAS Unit 25 Northpark, North Road, Dublin 11.
T: (01) 8239000

MULLINGAR Unit 12A Clonmore, Mullingar Business Park, Mullingar, Co Westmeath. T: (044) 9385515

NAAS Unit F3, N7 Business Park Naas, Co Kildare.
T: (045) 4898099

RED COW Unit B1, JFK Trading Centre, John F Kennedy Rd, Dublin 12. T: (014) 242042

DUNDALK Unit 3, Butterly Business Park, Coes Rd, Dundalk, Co Louth. T: (042) 9327305

CORK Units 8&9 Lehenaghbeg, Forge Hill Cross, Togher, Cork. T: (021) 4321820

WATERFORD Unit 10E, Six Crossroads Business Park, Waterford. T: (051) 372825

LIMERICK Unit K1, East Way Business Park, Ballysimon, Limerick. T: (061) 423310

TRALEE Units 5,6 Westside, Monavally Industrial Estate, Tralee, Co Kerry. T: (066) 7103955

CABLE & ACCESSORIES (NI) LTD
ELECTRICAL WHOLESALER

SUPPLIERS OF ELECTRICAL CONTRACTING MATERIALS TO ELECTRICAL CONTRACTORS, LOCAL AUTHORITIES, FACTORIES ETC

DISTRIBUTORS OF:

- Thorn Lighting • Hager Switchgear • MK Accessories
- Gewiss • Click • Avo • Unitrunk • Pirelli Cables
- ESP Fire Alarms & Emergency Lighting
- GE Lamps & Tubes • ROBUS • Crabtree
- ATC • Dimplex, Redring etc

■ **BUNCRANA** Unit 4A Milltown Business Park, Buncrana
Tel: +353 (0)74 9322569 - Fax: +353 (0)74 9321771

■ **OMAGH** 53 Derry Road, Omagh
Tel: +44 (0)28 8225 2642 - Fax: +44 (0)28 8225 2645

■ **LIMAVADY** 16 Connell Street, Limavady
Tel: +44 (0)28 7772 2188 - Fax: +44 (0)28 7776 8991

■ **DERRY** Maydown Works, Derry
Tel: +44 (0)28 7186 0834 - Fax: +44 (0)28 7186 0834

■ **LETTERKENNY** Fiesta Port Road, Letterkenny
Tel: +353 (0)749126788 - Fax: +353 (0)749126539

HEAD OFFICE...

Balliniska Business Park,
Springtown Industrial Estate, Londonderry.
T: +44 (0)28 7136 0110 - F: +44 (0)28 7126 3796

Email: info@cableandaccessories.co.uk
www.cableandaccessories.co.uk

CORE Power in Progress

BEST QUALITY PRODUCTS, IN-HOUSE STOCK & SUPPORT SERVICES SINCE 1981

PVC-u and aluminium cable management -
Steel containment and bracketry - Underfloor
to desk power - Modular wiring and flat cables -
Lighting control

Northern Ireland, Unit 4 Duncree Industrial Park,
Duncree Road, Belfast BT3 9BP.
T: +44 (0)28 900 200 56 - F: +44 (0)28 900 213 08
E: info@coreelectrical.com

Republic of Ireland, Unit 17b Goldenbridge Industrial
Estate, Tyrconnell Road, Inchicore, Dublin 8 D08 WD50
T: +353 (0)1 453 7033 - F: +353 (0)1 453 6911
E: info@coreelectrical.ie
www.coreelectrical.com

DEMESNE ELECTRICAL

Electrical Control, Switchgear
& Energy Saving Specialists

- **Dublin Branch**
+353 (0)1 404 7700
- **Tyrone Branch**
+44 (0)28 8772 5033
- **Cork Branch**
+353 (0)21 435 5440
- **Belfast Branch**
+44 (0)28 9075 6808
- **Luton Branch:** +44 (0)1582 848402

www.demesne.ie

dew

DUNGANNON ELECTRICAL WHOLESALER

Serving the Electrical Industry

WIDE RANGE OF ITEMS IN STOCK SAME DAY DELIVERY
(SEE WEBSITE FOR DETAILS)

Kraus & Neimer atc British Electric Lamps
Ansell ROBUS GEWISS
Scolmore Kidde Electrix
ABB Unitrunk KLIPSAL
Falcon Trunking SELEKTID
hager FUSUARD FLUKE
lumagalli C.P. SICKER

www.dungannonelectrical.co.uk

Serving the Electrical Industry

DUNGANNON ELECTRICAL WHOLESALER
199 Killyman Road, Dungannon, BT71 6NS
Telephone: +44 (0)28 87729787
Fax: +44 (0)28 87762166
www.dungannonelectrical.co.uk

schulte electro systems **EVoline Ireland**

EVoline Ireland
Ph: 0834088579
Email: sales@evoline.ie
Web: www.evoline.ie

eurossales LTD
EST 1972

the one-stop-shop for the electrical trade

HEAD OFFICE
EURO SALES - RINGSEND
9 Fitzwilliam Street, Ringsend, Dublin 4.
Tel: 01-6680477 - Fax: 01-6680854
E-Mail: info@eurossales.ie

BRANCHES AT
EURO SALES - SANDYFORD
Unit 1G, Block 2, Three Rock Road,
Sandyford Industrial Estate, Dublin 18.
Tel: 01-2959611 - Fax: 01-2959613
E-Mail: sandyford@eurossales.ie

EURO SALES - GLASNEVIN
100 Slaney Road,
Dublin Industrial Estate, Dublin 11.
Tel: 01-8300937 - Fax: 01-8300966
E-Mail: slaney@eurossales.ie

CONTACT THE LIGHTING DEPARTMENT DIRECT
Tel: 01-8500668 - Fax: 01-8300911
E-Mail: lamps@eurossales.ie

www.eurossales.ie

Electrical Wholesale Express

MALLUSK BRANCH
Unit 5, Antrim Line Business Park,
Sentry Lane, Mallusk,
Newtownabbey, Co Antrim BT36 4XX
Tel: +44 (0)28 9083 0303 - Fax: +44 (0)28 9083 0306
Email: mallusk@eweni.co.uk

MAGHERAFELT BRANCH
Unit 1b, Loves Hill, Castledawson Road,
Magherafelt BT45 8DP
Tel: +44 (0)28 7946 9600 - Fax: +44 (0)28 9746 9699
Email: magherafelt@eweni.co.uk

NEWTOWNARDS BRANCH
Unit 4 Scrabo Business Park, Jubilee Road,
Newtownards, BT23 4ZP
Tel: +44 (0)28 9180 0981
Email: ards@eweni.co.uk

SUPPLIERS OF:

Ansell MARTINDALE ELECTRIC ABB VENTURE
aico FLUKE
Schneider Electric British Electric Lamps Fitzgerald
SELEKTID M Marshall Tufflow CLICK

AWARD WINNING ELECTRICAL WHOLESALER

Opening Hours: Mon-Thurs 7.30am - 5.30pm
Fri 7.30am - 4.30pm - Sat 8.30am - 12 noon

www.eweni.co.uk

FAIRLEY & SMYTH

ELECTRICAL WHOLESALERS LTD

Suppliers of:-
Cables, Heating, Lighting, Fans,
Switchgear, Showers, Decorative
Wiring Accessories etc

Tel: +44 (0)28 9077 5888
Fax: +44 (0)28 9077 2100

Unit 7, Duncrue Crescent, Duncrue Ind Est,
Belfast BT3 9BW
Email: sales@fairleysmyth.co.uk

FOR A FRIENDLY & RELIABLE
SERVICE

KEW

ELECTRICAL

Northern Ireland's Leading
Independent Electrical Wholesaler




*"Competitive Prices, First Class
Service, Products and Staff"*

- Ultra modern trade counter & lighting showroom
- Next day delivery to anywhere in Northern Ireland
 - Same day delivery service
 - Call and collect service
- Open Saturdays 9.00am - 12.30pm
- Branches also in Mainland UK
- Supplying the trade for over 100 years

 facebook.com/
kewelectrical
  twitter.com/
edsandeds


KEW ELECTRICAL DISTRIBUTORS LTD.
 T/A Eds & Eds Ltd,
 385 Holywood Road, Belfast, BT4 2LS
 T: +44 (0)28 9047 1727 • F: +44 (0)28 9047 1153
 E: belfast@kewelectrical.co.uk
www.kewelectrical.co.uk
T: +44 (0)28 9047 1727

WANTED NOW

ALL TYPES OF
ELECTRICAL CABLE

Industrial
Commercial
Domestic

Any Condition
Obsolete Stock
Complete Clear out



multimetals
recycling ltd.

Tel: 00353 87 768 4333

Multimetals Recycling Ltd,

The Murrough, Bollarney, Wicklow

WILL COLLECT IF REQUIRED

little

T: +44 (0) 28 3832 2322
sales@littleelectrical.com

PRODUCTS / AUTOMATION / ENGINEERS / TESTING

4 DIVISIONS
1 TOTAL SOLUTION

SICK
SIEMENS
BECKHOFF
RITTAL
EASTERN
ANY MANY MORE...

WWW.LITTLEELECTRICAL.CO.UK 50 POWERHOUSE YEARS

83 - 85 Queens Place, Lurgan, Co. Armagh, BT66 8BY
T: +44 (0) 28 3832 2322 E: sales@littleelectrical.com



Kellihers Electrical
REXEL GROUP

SPECIALISTS IN:
CABLE
DATA
LED LIGHTING
WIRING ACCESSORIES
SOLAR PHOTOVOLTAIC (PV) & ACCESSORIES

OFFERING TURNKEY SERVICES:
IN-HOUSE LIGHTING DESIGN TEAM
ENERGY EFFICIENT SOLUTIONS
PANEL BUILDING SHOP



REXEL GROUP

www.kellihers.com

BRANCH NAME	ADDRESS	PHONE
Kellihers Electrical Ballymount	M50 Business Park, Ballymount Road Upper, Dublin 12	01 4566717
Kellihers Electrical Sandyford	Unit E3, Three Rock Road, Sandyford Industrial Estate, Dublin 18	01 2952011
Kellihers Electrical Croke Park	Unit G2 Croke Park Industrial Estate, Russell Street, Dublin 1	01 8554704
Kellihers Electrical Finglas	Unit 27, North Park, North Road, Finglas, Dublin 11	01 8041160
Kellihers Electrical Naas	Unit A1, Toughers Industrial Estate, Newhall, Naas, Kildare	045 447860
Kellihers Electrical Portlaoise	Clonminam Industrial Estate, Portlaoise, Laois	057 8664660
Kellihers Electrical Dundalk	Ard Easmuinn Road, Dundalk, Louth	042 9327854
Kellihers Electrical Kilkenny	Unit 11A, Loughboy Industrial Estate, Kilkenny	056 7750410
Kellihers Electrical Waterford	Tramore Road, Waterford	051 377755
Kellihers Electrical Cork- Tramore Road	Tramore Road, Cork	021 4704100
Kellihers Electrical Cork- Eastgate	Units 31-32 East Gate Drive, Eastgate, Little Island, Cork	021 4296240
Kellihers Electrical Cork- Mallow Road	North Point Business Park, Mallow Road, Cork	021 4932300
Kellihers Electrical Tralee	Ballymullen, Tralee, Kerry	066 7145300
Kellihers Electrical Killarney	Ross Road, Killarney, Kerry	064 6633985
Kellihers Electrical Limerick	Dock Road, Limerick	061 417442
Kellihers Electrical Ennis	Unit 9 Quinn Road Business Park, Ennis, Clare	065 6844233
Kellihers Electrical Bray	Unit A3 Old Court Industrial Estate, Boghall Road, Bray	01 2042670
CT Electric Galway	Sean Mulvoy Road, Galway	091 745300
CT Electric Castlebar	Castlebar Industrial Estate, Castlebar, Mayo	094 9023650
CT Electric Ballina	Unit 7 Moyvalley Business Park, Ballina, Mayo	096 60420
CT Electric Sligo	Finisklin Industrial Estate, Sligo	071 9145068
CT Electric Athlone	Unit 3 Daneswell Business Park, Monksland, Athlone	090 6494681

THE COMPLETE ELECTRICAL WHOLESALER

Mullingar Electrical Wholesale Ltd.

Mullingar Branch

30 Clonmore Business Park,
Mullingar, Co. Westmeath
T: +353 44 9343040 - F: +353 44 9343517
Email: sales@mullingarelectrical.com

Longford Electrical Wholesale

3 Cartronageeragh Business Park,
Athlone Road, Co. Longford
T: +353 43 334 6380 - F: +353 43 3346 381
Email: longford@mullingarelectrical.com

Midland Electrical Wholesale

5 Sragh Business Park, Tullamore, Co. Offaly
T: +353 57 9351561 - F: +353 57 9323748
Email: tullamore@mullingarelectrical.com

North East Electrical Wholesale

11 North Link Business Park, Inner Relief Road,
Dundalk, Co. Louth
T: +353 42 9328472 - F: +353 42 9328784

ALSO VISIT

THE LIGHTING SHOWROOM

1 Clonmore Business Park, Mullingar, Co. Westmeath, Ireland
T: +353 44 9343299 / 9341781 - F: +353 44 9341805
E: lighting@mullingarelectrical.com

www.mullingarelectrical.com
Your local electrical wholesaler

POLARIS

MANUFACTURER OF LED LIGHTING
GREENER, BRIGHTER... BETTER!

LED LIGHTING



FLOODLIGHTS, GU10'S, PANELS, HIGHBAYS, LAMPS

www.polarisled.com

86-88 Dargan Crescent, Belfast.

T: +44 (0)28 9039 6945

F: +44 (0)191 4999626

E: info@polarisled.com

Phibsboro
Electrical Wholesalers Ltd.

296e North Circular Road, Phibsboro, Dublin 7
T: +353 (0)1 868 2033 F: +353 (0)1 838 8529
info@pewl.ie www.PEWL.ie

REW

Electrical and Security Distributors.

Electrical & Security Distributors Ltd

DUBLIN 11 Unit 17 & 18, Finglas Business Centre,
Jamestown Road,
T: (01) 652 7036

DUBLIN 12 Unit 2, Red Cow Retail Centre,
Robinhood Road, Ballymount
T: +353 (1) 464 2200



www.rew.ie

NEW NATIONAL ELECTRICAL WHOLESALERS

SUPPLIERS OF:

PHILIPS • MK • CED • DIMPLEX • GE
• HKC • UTC Fire & Security • ABB • ACT
• DRAKA

HEAD OFFICE

Unit 46 Rosemount Business Park,
Ballycoolin, Dublin 11, D11 K26W
T: +353 (0)1-2541900 - F: +353 (0)1-2541925
new@new.ie

BRAY BRANCH

Unit 48 Beechwood Close, Boghall Road, Bray
Co Wicklow, A98 K5D4
T: +353 (0)1 2453970 - F: +353 (0)1 2116200

CORK BRANCH

Unit 16/17, Northlink Bus Park,
Old Mallow Road, Cork, T23 VY28
T: +353 (0)21-2432990 - F: +353 (0)21-4396966

NAAS BRANCH

Unit B4 M7 Business Park, Newhall,
Naas, Co. Kildare, W91 F762
T: +353 (0)45-895896 - F: +353 (0)45-895898

BALLYMOUNT BRANCH

Unit 3B Sunbury Ind. Est. Ballymount Road,
Lower Walkinstown, Dublin 12, D12 FY06
T: +353 (0)1-4567100 - F: +353 (0)1-4566366

MARINO BRANCH

68 Malahide Road, Marino, Dublin, D03 CY67
T: +353 (0)1-5631900 - F: +353 (0)1 8054834

CASTLEDERMOT BRANCH

18 Main Street, Castledermot, Co Kildare
T: +353 (0)59-915-8060 - F: +353 (0)59-916-2591

www.new.ie

POLARIS

MANUFACTURER OF LED LIGHTING
GREENER, BRIGHTER... BETTER!

40W, 60W, 100W AND
150W INCANDESCENT
LAMPS, CANDLES
AND GOLFBALLS STILL
AVAILABLE.



FOR INFORMATION CONTACT US AT:

86-88 Dargan Crescent, Belfast.

T: +44 (0)28 9039 6945

F: +44 (0)191 4999626 - E: info@polarisled.com

www.polarisled.com

SCAN
SCAN ALARMS & SECURITY SYSTEMS (UK) LTD

INTRUDER ALARMS | FIRE & ASSOCIATED SYSTEMS
CLOSED CIRCUIT TELEVISION | ACCESS CONTROL
INTEGRATED SYSTEMS | TOTAL PROTECTION

t: +44 (0)28 9034 2233 e: info@scanalarms.co.uk
www.scanalarms.co.uk



SLG Ltd

Specialist Lamps & Gear

DISTRIBUTORS OF:






PHILIPS

58a Dargan Crescent
Belfast, BT3 9JP
T: +44 (0)28 9532 0506
F: +44 (0)28 9532 0606
E: sales@slg-belfast.co.uk

STEARN

YOUR 'OTHER' WAREHOUSE

Specialist Distributor of Lamps and Control Gear to the Electrical Wholesale Trade







b,a,g,

PLUS 2 TO 6 CELL EMERGENCY BATTERY STICKS AND PACKS

Unit 13, Duncrue Industrial Park,
Belfast, BT3 9BP
T: +44 (0)28 9077 1506
E: belfast@stearn.co.uk
www.stearn.co.uk



Units 11 & 12 Duncrue Industrial Estate
Duncrue Road, Belfast BT3 9BW
Tel: +44 (0)28 9037 1888
Fax: +44 (0)28 9037 1471



Did you know you can purchase from any YESSS branch across the UK?
We have 103 branches nationwide including six throughout Northern Ireland



<p>YESSS Ballymena 028 2563 6758 ballymena@yesss.co.uk</p>	<p>YESSS Coleraine 028 7032 2618 coleraine@yesss.co.uk</p>	<p>YESSS Craigavon 028 3836 7668 craigavon@yesss.co.uk</p>
<p>YESSS Belfast East 028 9070 7928 belfast.east@yesss.co.uk</p>	<p>YESSS Belfast North 028 9078 2099 belfast.north@yesss.co.uk</p>	<p>YESSS Lisburn 028 9260 6758 lisburn@yesss.co.uk</p>



CONTACT YOUR LOCAL BRANCH
yesss.co.uk/map

ARE YOU RECRUITING?



www.elec magazine.com/jobs

electrical JOBS

Take advantage of our job section online, **specifically targeted at people within the electrical industry!**

ONLY £75+ VAT for **4 Weeks** on the Electrical website and across social media   

Contact Sarah on
NI: 028 9261 2990 - Rol: 01696 8319 or
sarah@kmp Ltd.co.uk for more info



Cuthbertson Laird Group

Test Equipment Sales Worldwide

• SALES • REPAIRS • CALIBRATION • HIRE



Gas Measurement Instruments Ltd



Radiodetection



Specialist in the Test & Measuring Industry

Supplying only the best from the world's leading manufacturers

Test & Measuring Equipment for:

- Electrical • Electronic • Temperature • Airflow • Torque • Dimension • Speed • Gas
- Combustion Analysers • Light • Noise & many more applications

NORTHERN IRELAND

NEWTOWNABBEY

Unit 4, River Park, Blackwater Road, Mallusk BT36 4TZ
Tel: 0044 (0)28 9083 0302 - Fax: 0044 (0)28 9083 8866

SCOTLAND

HAMILTON

Tel: 0044 (0)1698 829711
Fax: 0044 (0)1698 828363

ENGLAND

LEEDS

Tel: 0044 (0)113 2351356
Fax: 0044 (0)113 2351161

www.cuthbertsonlaird.co.uk



great service, products and flexibility

1 EDMUNDSON ELECTRICAL

Unit 1
24 Ballyrashane Road
Coleraine
BT52 2NL
T: 44 (0)28 7035 6226
E: coleraine.379@eel.co.uk



**2 EDMUNDSON ELECTRICAL
FIRETECH**

Mahon Industrial Estate
Mahon Road
Portadown
BT62 3EH
T: 44 (0)28 3833 5316
E: portadown.372@eel.co.uk



3 WALTER S MERCER

Unit 17b
Pennybridge Industrial Estate
Ballymena
BT42 3HB
T: 44 (0)28 2564 1511
E: ballymena.387@eel.co.uk



4 WALTER S MERCER

Mahon Industrial Estate
Mahon Road
Portadown
BT62 3EH
T: 44 (0)28 3833 5215
E: portadown.388@eel.co.uk



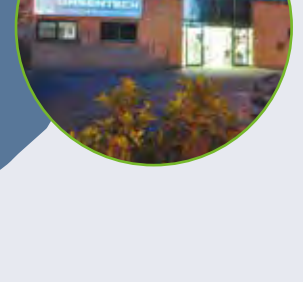
5 WALTER S MERCER DATATECH

Unit 11-12
Duncrue Industrial Estate
Belfast
BT3 9BW
T: 44 (0)28 9037 1888
E: belfast.386@eel.co.uk



**6 ELECTRICAL EQUIPMENT
GREENTECH**

58 Boucher Place
Belfast
BT12 6HT
T: 44 (0)28 9066 1177
E: belfast.244@eel.co.uk



IN NORTHERN IRELAND OVER 200 YEARS OF HISTORY
AN UNBEATABLE AND UNRIVALLED SERVICE



FOR LOCATIONS
PLEASE
DOWNLOAD OUR
LOCATOR APP
FROM THE
APP STORE

Providing a dedicated **SERVICE** to trade and industry
A wide range of quality electrical **PRODUCTS** and services
Total management **FLEXIBILITY** from all our branches