



Roadnet<sup>®</sup> Anywhere

It's Time to Think Big.

UPS Logistics Technologies



# Roadnet<sup>®</sup> Anywhere

## Get the Big Picture — and Big Results — with Roadnet Anywhere

- Dramatically reduce fleet miles and driver overtime to generate greater profitability
- Meet and exceed customer service satisfaction
- Set expectations for driver performance and accountability on a daily basis with clearly defined manifests, maps, and directions
- Maximize driver and equipment productivity
- Assess delivery costs for profitability by drilling down to actual costs per stop
- Work smarter by investing fewer hours in route planning and more time in strategic forecasting
- Capture customized daily reports and vital historical data

## Now even with a small fleet, you can be a big wheel.

So, maybe you don't have the biggest fleet on the road. But now there's no reason not to plan, dispatch, and succeed like one — thanks to Roadnet Anywhere from UPS Logistics Technologies.

As a small operator, you well know that running a fleet of ten trucks can give you just as many headaches as a fleet of 100. And without the right management tools, it's all too easy to find yourself staring down some significant shortfalls both in productivity and customer service. Perhaps you've even looked into some of the large logistics software packages out there, only to be discouraged by their high learning curve — and high cost.

# Roadnet® Anywhere

The screenshot displays the Roadnet Anywhere software interface for a dispatch center. The main window shows a map of the Lutherville-Timonium area with a blue route planned through various stops. A 'Scorecard' on the left indicates a total cost of \$210.53 and 1 route with 3 stops. Below the map is a 'GPS Playback' control panel. At the bottom, an 'Explore Routes' section shows a detailed table for the 'Route TOWSON-TIMONIUM'.

Stop	Planned Travel Time	Travel Time	Planned Distance	Distance	Planned Arrival	Planned Wait Time	Planned Service Time	Planned Departure	Arrival	vWait Time	Service Tr
1	00:03:31	00:09:38	1.58	4.35	10:30 EDT	00:00:00	00:01:30	10:31 EDT	09:53 EDT	00:00:00	00:00:53
2	00:01:45	00:09:54	0.83	1.57	10:09 EDT	00:00:00	00:17:40	10:26 EDT	10:28 EDT	00:00:00	00:00:23
3	00:02:19	00:00:29	1.14	4.10	09:38 EDT	00:00:00	00:01:40	09:39 EDT	10:44 EDT	00:00:00	00:00:21
	00:27:29	00:44:16	17.52	11.45		00:00:00	00:28:20			00:00:00	00:01:37

## ▲ Is your delivery day delivering as planned?

With Roadnet Anywhere, you can monitor the progress of any delivery route at any point throughout the day for plan compliance. On the Actual vs. Plan screen, any deviations from a route plan are instantly revealed in displaying the driver's "real path," as tracked by GPS positioning. You can even play back the entire day's route on-screen for later review.

That's why we've designed Roadnet Anywhere specifically for companies just like yours — small fleets of ten trucks or less. With its seamless Web-based platform, Roadnet Anywhere delivers all of the robust capabilities you need to deliver more, without major up-front costs. The result? You can run your distribution system with all of the benefits of a big operation, but with none of the risk.

## Whenever you need it. Wherever you use it. That's big.

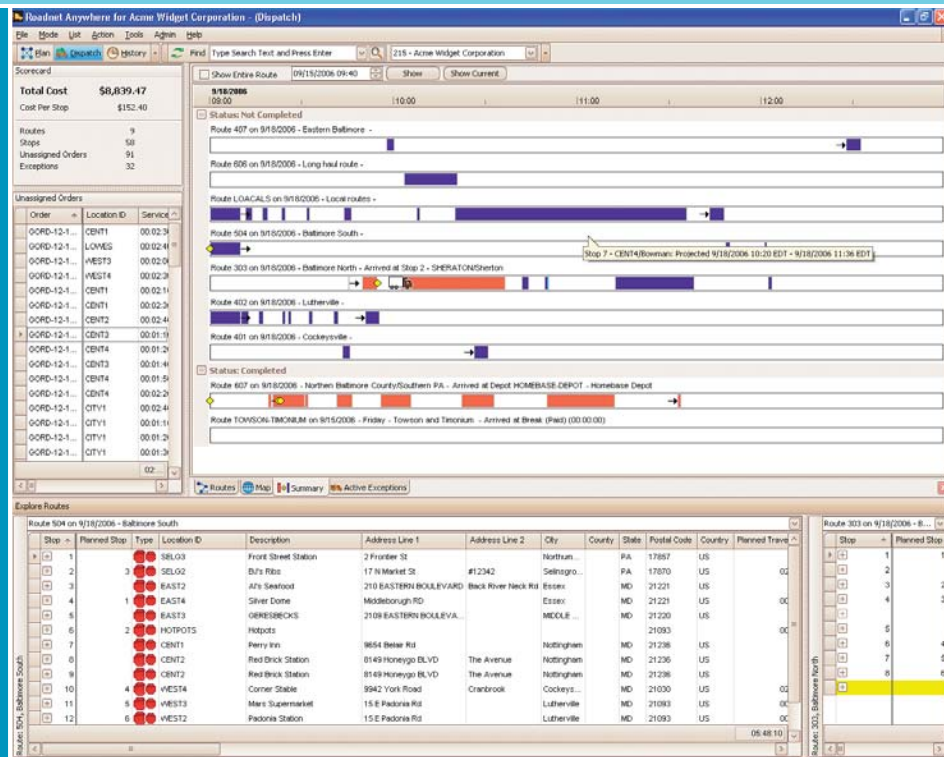
When we say Roadnet Anywhere, we mean *anywhere*. From your dispatch center or on the road, its powerful tool set is available to

you instantly 24/7. In fact, all you need is a standard computer and high-speed Internet connection. That's because Roadnet Anywhere employs a Web-based, 'on-demand' platform, where you simply go online to use the modular tools you need at the time — planning, dispatching, reporting, and more.

Easy to use? Absolutely — even though it offers a functionally rich architecture based on UPS Logistics Technologies' industry-leading know-how, Roadnet Anywhere is designed from the ground up to be easy for you to set up. Roadnet Anywhere is ready for use, without a lengthy learning curve — or the need for IT staff to install or maintain. And with our step-by-step instructions, accompanied by a detailed instruc-

**“With Roadnet Anywhere, transportation managers can gain a greater degree of control over their daily distribution system than ever before — and maintain it wherever they are, every day.”**

Len Kennedy, Chief Operating Officer,  
UPS Logistics Technologies



tion manual, you will be up and running within days. In short, Roadnet Anywhere has all the smarts you need built in, with all of the complexity left out.

### Up-front costs? Hardly. ROI? Huge.

Looking for a low-cost way to introduce logistics automation into your business? You can't do better than with Roadnet Anywhere. Thanks to its "on-demand" scalable architecture that allows you to select and use just the modules you need, you simply pay as you go on a monthly basis, much as you would for cellphone service.

While it saves you money on the front end, Roadnet Anywhere also provides you with a very healthy ROI. Through its enhanced planning and dispatching capabilities, *this solution can help you reduce your overhead right away by as much as 7 – 10 percent in actual dollars saved.* By significantly reducing your transportation costs, Roadnet Anywhere can even make it possible for you to deliver more with fewer trucks, while continuing to minimize excessive fleet mileage, high overtime, inefficient resource utilization, and missed deliveries.

### Think big. Plan bigger.

As a comprehensive fleet management solution, Roadnet Anywhere gives you a strategic edge and predictability to your operations — so that you spend less time putting out fires, and more time running your distribution business productively. Roadnet Anywhere's core modules include:

**Roadnet Anywhere PLAN** raises the bar on everyday routing by giving you the added insight to plan your operational day in advance — and even make correct strategic decisions on the fly. PLAN gives you the functionality to match orders with pre-defined standard routes — and even apply dynamic routing if needed. Plus, you can choose from a variety of strategic functions in Roadnet Anywhere's route editor to create routes, optimize them, and even explore "what if" scenarios from a number of perspectives. These functions include:

- Creating routes
- Plotting routes on a map
- Resequencing routes (time-window)
- Resequencing routes (shortest distance)
- Changing route attributes
  - Changing start time
  - Assigning/changing drivers
  - Assigning/changing equipment
- *Smart Find* capabilities
  - Orders
  - Routes
  - Locations
- Geocoding locations
- Adding orders to routes

### ▲ Capture your entire delivery network in real time.

Roadnet Anywhere's Daily Summary screen gives you the top-down view you need, showing the progress of every delivery on a given day — and in real time! With just a glance at this easy-to-read bar chart, you can pinpoint the locations of each of your vehicles, as well as their performance in terms of service and drive times.



**Roadnet Anywhere DISPATCH** takes routes created in the routing module and applies them to a powerful real-time dispatching system that manages all dispatcher/driver communications and even allows you to interact directly with your drivers in the field. DISPATCH's capabilities include:

- Viewing stop ETA information (Planned, Actual, Projected)
  - Actual/projected times updates via GPS
- View GPS breadcrumb trail
- Disseminating Route Manifests to drivers
- Disseminating dispatcher initiated changes to the driver (ex. Stop Resequencing)
- Receiving route status information back from the drivers
  - Arrive Message and timestamp
  - Depart Message and timestamp
  - Text message
  - GPS information
  - Quantity tracking by line item
- Receiving route modifications from the driver
  - Stop Cancel
  - Stop Re-sequencing
  - Stop Undelivered
- Adding orders to routes after the vehicle is en route
- Adding orders to routes before the vehicle is en route
- Assigning drivers and equipment to routes
- Viewing routes (Map)

DISPATCH's tracking capabilities give you the added control to observe and manage your field deliveries in real time. By equipping each of your

drivers with a standard GPS-based telephone, you can monitor their activities, bringing greater accountability and higher performance to their hours on the road. As a result you can expect fewer miles, reduced overtime, and more deliveries per day. Functional tracking features of DISPATCH include:

- View daily route exceptions that include Route Path Deviation, Unplanned Stops, Excessive Service Time, Speed Violation, and more
- Ability to view a driver's current location
- Ability to view a route in progress
- Ability to view the breadcrumb trail in real time
- Ability to query driver routes

### **What's the big idea? It's in the reports.**

To help you maintain a clear, strategic perspective as a transportation manager, Roadnet Anywhere provides a broad selection of pre-formatted and easily customizable progress reports designed to track and evaluate every aspect of your daily operations — and the costs involved.

**Operational Reports** give you in-depth detail on Daily Time Windows, Less Than Minimum, Actual vs. Projected Reporting, and Daily Stops.

**Tactical Reports**, including Driver Manifests, Route Summary Statistics, and Resource Utilization, provide a logistical perspective.

**Strategic Reports** analyze your daily data in order to identify critical trends and key performance indicators, with Route Exceptions, Route Executions Metrics, and more.

### **Put the biggest name in distribution to work for you.**

When you work with Roadnet Anywhere, you're working with UPS Logistics Technologies, a world leader in the development of innovative solutions for delivery management. As a strategic business unit of UPS, we've made a name for ourselves as the 'go-to' partner you can always rely on for results. Today, you'll find our products in daily use at more than 2,800 locations worldwide, optimizing delivery logistics and management of over 106,000 vehicles. Whatever the hour, whatever the route, we'll make sure that your operations stay on plan with your goals, big time.



## UPS Logistics Technologies

UPS Logistics Technologies  
849 Fairmount Avenue  
Suite 400  
Baltimore, MD 21286  
410.847.1900  
800.762.3638 toll free  
market@upslogistics.com  
www.upslogisticstech.com



© Copyright 2006  
United Parcel Service of America,  
Inc. UPS, the UPS brandmark and  
the color brown are trademarks of  
United Parcel Service of America,  
Inc. All rights reserved.  
PL19 10/06