



# International Union of Operating Engineers

## 2018 General Membership Construction Training Course Schedule

<b>Course</b>	<b>Dates</b>
Level 1 Crane Operations	October 8-12, 2018
NCCCO Mobile Crane Prep Course for Written Exam	October 9-12, 2018
Rigging & Working with Wire Ropes	October 16-18, 2018
Excavation Operations & Site Layout	October 15-25, 2018
Tractor Loader Backhoe (TLB) Operations	October 15-19, 2018
Dozer Operations	October 15-26, 2018
Motorgrader Operations	October 22-26, 2018
GPS Machine Control	October 22-26, 2018
AWP Train-the-Trainer	October 30-31, 2018 <b>NEW</b>
Rough Terrain Crane Extension & Jib Erection	November 5-9, 2018
Excavation Operations & Site Layout	November 12-16, 2018
Advanced Crane Operations: Planning & Execution of Two Crane Lifts	November 12-16, 2018
Liebherr & Tadano RT Set up and Operations	November 12-16, 2018 <b>NEW</b>
SMAW Welding (Level 1)	November 12-16, 2018 <b>NEW</b>
NCCCO Practical Training & Testing	November 13-15, 2018
Earthmoving Fundamentals & Operations	December 3-7, 2018 <b>NEW</b>
Mobile Crane Operations (Level 1)	December 3-7, 2018
Mobile Crane Operations (Level 2) LMI Set-up & Operations	December 3-7, 2018 <b>NEW</b>

**Revised schedules will be sent out periodically as courses are added throughout the year.**



# International Union of Operating Engineers

## 2018 General Membership Construction Training Course Schedule

<b><i>Course</i></b>	<b><i>Dates</i></b>
Liebherr & Tadano RT Set up and Operations	December 10-14, 2018 <b>NEW</b>
Dedicated Pile Driver Training	Dates to be Announced
Foundation Drill Training	Dates to be Announced

**Revised schedules will be sent out periodically as courses are added throughout the year.**



# International Union of Operating Engineers

## 2018 General Membership Construction Training Course Schedule

### **NEW CRANE TECHNOLOGY & LMI OPERATIONS**

This course is an introduction to today's latest crane computers. You will have the opportunity to set up, configure, and operate some of the newest mobile and tower cranes in the construction industry. Manufacturer brands that will be onsite: Link Belt, Manitowoc, Grove, Leibherr, Terex, Tadano and Potain. This class is open to Local Union Instructors as well as the general membership.

### **NCCCO / OECF PRACTICAL TRAINING & TESTING**

The IUOE Training and Education Center will be offering training and testing for these two industry certifications on alternating months.

### **MOBILE CRANE SET-UP/INSPECTIONS/OPERATIONS**

The IUOE Training & Education Center will be offering classes in all areas of crane operation from introductory to advanced, including Rigging, Assembly/Disassembly and Multiple Crane Lifts.

### **EXCAVATOR OPERATIONS**

The IUOE Training & Education Center will be offering classes in all areas of excavator operation from beginner through advanced. Topics covered: Trenching, Benching, Sloping, Trench Box Work, Backfilling, and Layout.

### **BULLDOZER OPERATIONS**

The IUOE Training & Education Center will be offering classes in all areas of bulldozer operation from beginner through advanced. Topics covered: Working on Slopes, Slot Dozing, Backfilling, Cuts and Fills, and Working with Grade Control.

### **TRACTOR LOADER BACKHOE OPERATIONS**

The IUOE Training & Education Center will be offering classes in all areas of TLB operation from beginner through advanced. Topics covered: Trenching, Benching, Sloping, Trench Box Work, Backfilling, and Layout.

### **GPS MACHINE CONTROL INSTRUCTION**

This course will take the member through a step-by-step system set up for GPS machine control electronics. After completion of this course the member will understand how to install and use the operational functions of these components on various pieces of equipment.



# International Union of Operating Engineers

## 2018 General Membership Construction Training Course Schedule

***You can expect to train only with the best equipment when attending classes held at the International Education & Training Center. Here's a peek of the equipment you can look forward to training with:***

### **MANITOWOC MLC165-1**

The Manitowoc MLC165-1 provides a broad range of features that will undoubtedly be translated into jobsite benefits that increase productivity and save money.

#### **Features:**

- 180 Ton Capacity
- 160' Main Boom
- 120' Luffer



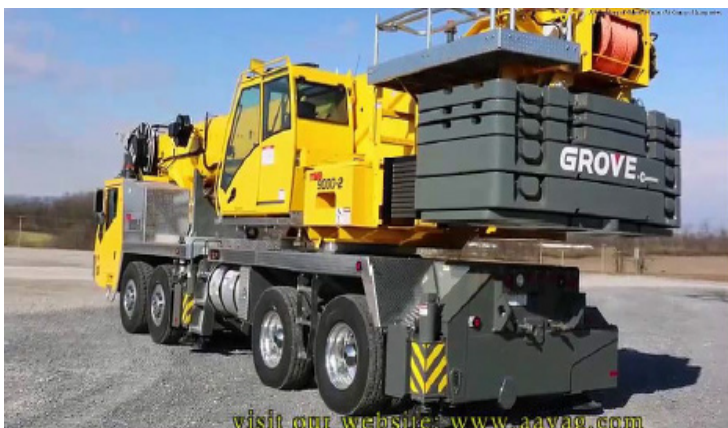
Manitowoc MLC165-1

### **GROVE TMS9000-2**

The TMS9000-2 is the premier truck-mounted crane in the industry. Features like the Grove MEGAFORM boom, optional extensions and counterweight removal system make the TMS9000-2 maneuverable and strong, making an impact on any jobsite.

#### **Features:**

- 115 Ton Capacity
- 169' Main Boom
- 57' Bi-fold Swing Away
- CCS Control System



Grove TMS9000-2





# International Union of Operating Engineers

## 2018 General Membership Construction Training Course Schedule

### GROVE GRT8100

The GRT8100 has been designed and built for today's worldwide market with a 154 ft. 5 section main boom which provides better reach and greater versatility, combined with the NEW Manitowoc Crane Control System with user-friendly interface, tilting cab, impressive load charts, and extensive component testing.

#### Features:

- 100 Ton Capacity
- 154' Main Boom
- 56' Bi-fold Swing Away
- CCS Control System



Grove GRT8100

### POTAIN MDT 219

The MDT 219 has the highest capacity of all models in the MDT CCS City tower crane range, making it ideal for North American construction, where buildings are increasingly becoming taller and more complex.

#### Features:

- 8.8 Ton Capacity
- Fast and easy set-up – the crane can be calibrated in 15 minutes.
- Increased performance – CCS generates extra load chart increase.
- Optimized ergonomic control – new driver control unit for enhanced ergonomics and control.
- Easy maintenance – on-screen maintenance tool and optional remote monitoring through CraneSTAR Diag.
- Standardized components – easy spare parts availability.



Potain MDT 219



# International Union of Operating Engineers

## 2018 General Membership Construction Training Course Schedule

### POTAIN MDT Igo T70A

The Igo T70A is an evolution of the Igo T70 with several technical improvements from its previous version: a closed loop slewing mechanism ensuring better operating sensation, SM1 trolley configuration for improved load chart capacity and the ability to accept 3 mast inserts for a maximum hook height of 35 m (115 ft).

#### Features:

- 4.4 Ton Capacity
- Self-Erecting Tower Crane
- Variable Mast Heights
- Multiple Operational Jib Configurations
- Optional Ultra View Cab or Cab 800
- 14.8 x 14.8 ft Footprint
- Wireless Remote Control
- 480v Three-Phase Power Hookup



Potain MDT Igo T70A







# International Union of Operating Engineers

## 2018 General Membership Construction Training Course Schedule

### LINK-BELT 218HSL

#### Features:

- 110 Ton Capacity
- Maximum Main Boom & Jib
- Transport complete crane with base section
- Drums with rope and self assembly device
- Less counterweights at under 100,000 lbs
- Rated capacity limiter with full color graphic display
- Powerful winch package with wet brake design
- 7-piece counterweight system design with innovative counterweight removal system



Link-Belt 218HSL





# International Union of Operating Engineers

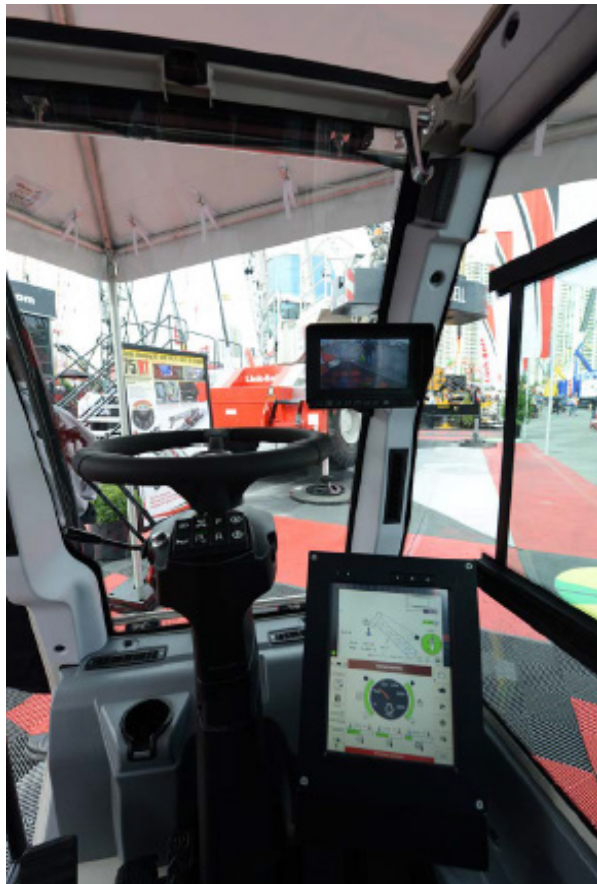
## 2018 General Membership Construction Training Course Schedule

### LINK-BELT 75RT

The 75RT impresses both on the road and off. It has outstanding reach for its tonnage class and a new operator's cab has elevated the experience of owning and operating a Link-Belt crane. It transports fully loaded with counterweight under 100,000 lbs. – and under 90,000 lbs. without counterweight. A six-speed transmission on the 75RT is powered by a Cummins Tier 4F QSB 6.7 270 hp (201 kW) diesel engine.

#### Features:

- 75 Ton Capacity
- 142' Main Boom
- Tilting Cab
- Pulse 2.0 Telematics



Link-Belt 75RT





# International Union of Operating Engineers

## 2018 General Membership Construction Training Course Schedule

### TEREX HC110-1

The Terex HC110 Lattice Boom Crawler crane has a maximum lift capacity of either 100 or 110 tons. Terex crawler cranes offer the latest in technology, hydraulics, ergonomics and design making them extremely flexible, reliable, and able to be deployed for a broad array of tasks.

It incorporates a hydraulic counterweight removal system which simplifies counterweight installation and removal. A high-tech operators cab, powerful high-speed hoist system and extensive options, further cement the Terex HC110 as best in class.

#### Features:

- 110 Ton Capacity
- 180' Main Boom



Terex HC110-1

### TEREX RT100US

The RT100 offers class leading boom tip height and exceptional maneuverability. These features are integrated with advanced hydraulics and electronics to provide the operator with unmatched ease-of-use and productivity.

#### Features:

- 100 Ton Capacity
- 174' Main Boom
- 40' Swing Away
- Tilt Cab
- Latest Electronics



Terex RT100US



# International Union of Operating Engineers

## 2018 General Membership Construction Training Course Schedule

### TODANO GR-750XL

The Tadano GR750XL is a 75 ton rough terrain crane. It's 5 section full power boom has a maximum length of 141 ft. and its maximum jib length is 58 ft. It features a rugged frame and a hydraulic suspension system specially made to handle the toughest jobs and jobsites.

The Tadano GR750XL also features new Hello Net technology, allowing for easy access to job history, and also allowing the user to locate the crane at any moment. Asymmetrical Outriggers add another benefit by allowing operators and teams to stay safe while operating on jobs that require unconventional lifts. The onboard AML-C will slow stop when the crane is pushed to unsafe conditions, limiting safety hazards.

Two devices on the Tadano GR750XL help to reduce fuel consumption. The eco mode system reduces engine power when it isn't needed by 40%. The Positive Control System reduces fuel consumption while the crane is idle but still on by 60%. By limiting fuel consumption, cranes leave less of an impact on the environment and they save money.

#### Features:

- 75 Ton Capacity
- 140' Main Boom
- 42' Swing away



Todano GR-750XL



# International Union of Operating Engineers

## 2018 General Membership Construction Training Course Schedule

### **TODANO GTC 800**

The GTC-800 was built to meet the needs of power transmission, bridge and civil, and foundation construction, while also creating a broader appeal for general lifting applications.

Design of the GTC-800 incorporates a full-power, five-section telescopic boom, as well as Tadano winches, jibs, hydraulic cylinders, AML-C control system, and Hello Net telematics.

#### **Features:**

- 88 Ton Capacity
- 110' Main Boom



Todano GTC 800





# International Union of Operating Engineers

## ATTENDEE REGISTRATION FORM

All areas of this registration form **MUST** be completed and legible.

Your Local Union Business Manager **MUST** approve and sign this form.

*Please note: You will receive all future correspondence regarding this course/event via e-mail.*

---

**NAME OF COURSE/EVENT:** \_\_\_\_\_

**COURSE/EVENT DATES:** \_\_\_\_\_

---

### ATTENDEE INFORMATION

**NAME:** \_\_\_\_\_ **EMAIL:** \_\_\_\_\_

**CELL PHONE NUMBER:** \_\_\_\_\_

**LOCAL UNION:** \_\_\_\_\_ **UNION REGISTER NUMBER :** \_\_\_\_\_

**REGION:**          Northeast          North/Central          Canada          Southern          Western

\_\_\_\_\_  
Attendee Signature

\_\_\_\_\_  
Date

---

### AUTHORIZATION

*I authorize this member to attend the above listed course/event at the IUOE Training & Education Center in Crosby, Texas.*

\_\_\_\_\_  
Business Manager Signature

\_\_\_\_\_  
Date

---

Print, sign, and return to: Fax at (202) 778-2618 or Email to [kricks@iuoe.org](mailto:kricks@iuoe.org).

**This form must be filled out on your computer. No hand written forms will be accepted.**  
**Please submit a separate form for each course/event you would like to attend.**

Submission of this form does not guarantee admission to the course/event. You will receive a letter to let you know you have been enrolled in the course/event. This letter will also provide you with instructions on how to make travel arrangements and other important information.

Updated 7/3/2018