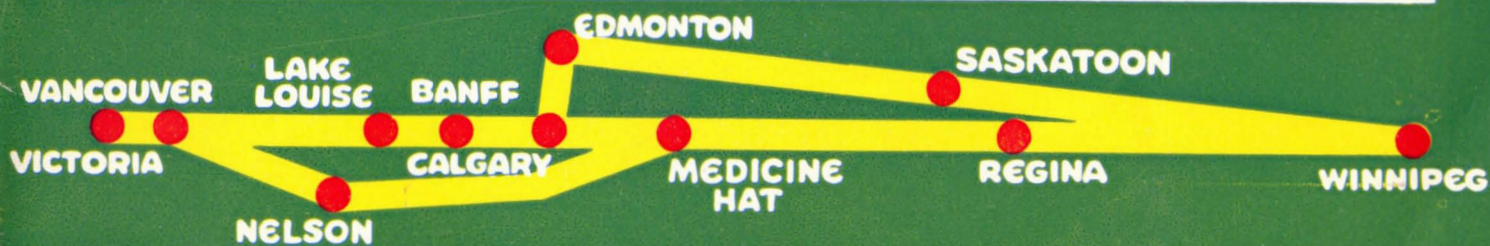


WESTERN CANADA AND THE CANADIAN ROCKIES

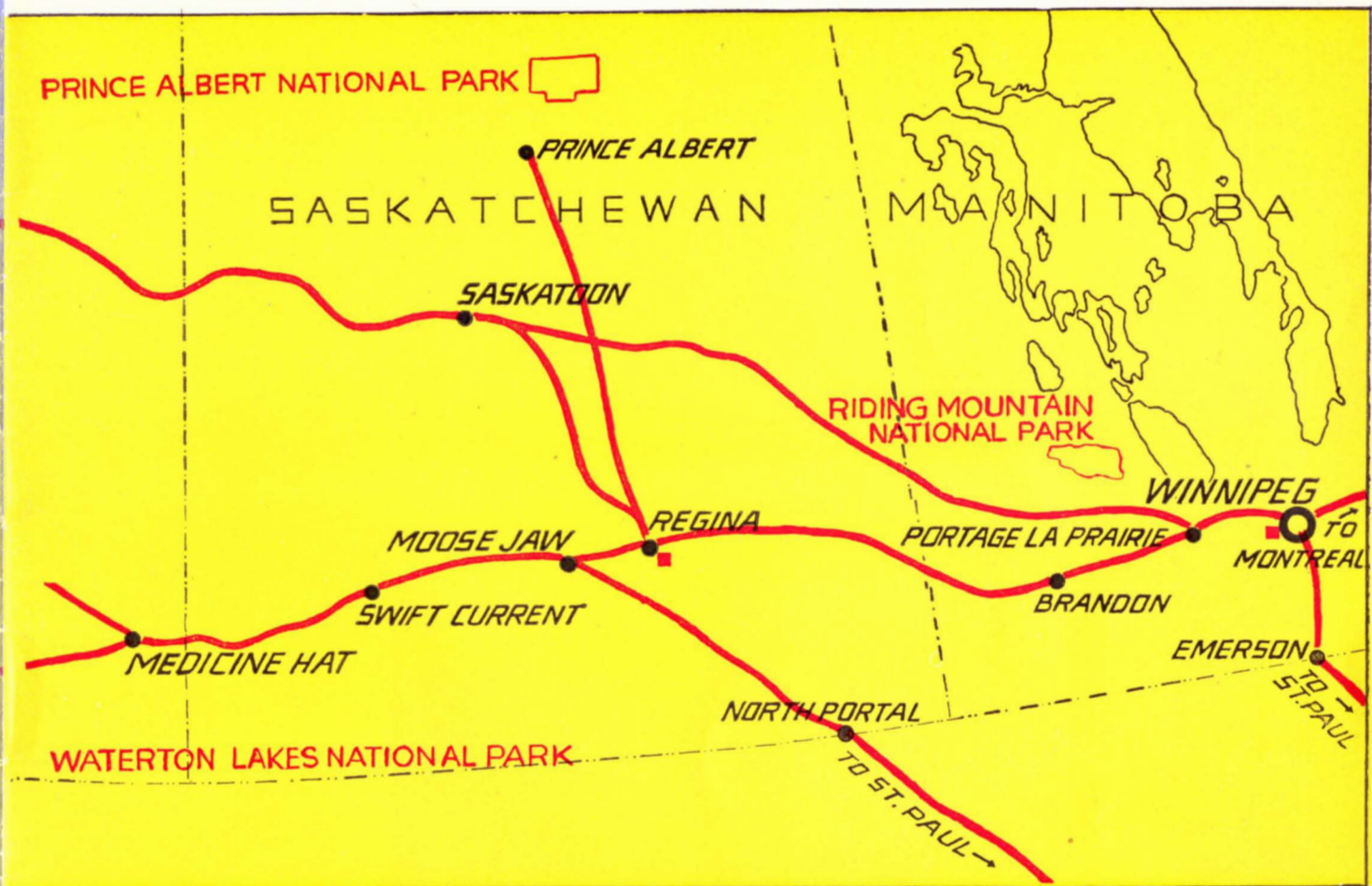
by
*Canadian
Pacific*





■ Marks location of Canadian Pacific
Hotels: Royal Alexandra, Winnipeg;
Saskatchewan, Regina; Palliser, Calgary;
Banff Springs Hotel; Chateau Lake Louise;
Hotel Vancouver (jointly operated for
Canadian Pacific and Canadian National);
Empress, Victoria.

Western Canada, depending upon when you went to school, has many meanings. It may bring to mind vast herds of roaming buffalo, the plains' Indians on their wiry ponies, trappers, fur traders, scarlet-coated Northwest Mounted Policemen taming the vast hinterland with lance and carbine, intrepid explorers, York boats with top hatted Hudson Bay factors behind sturdy rivermen, "gandy-dancers" pushing the Canadian Pacific rails across the broad prairies, surveyors in search of passes through the Canadian Rockies, prospectors in search of gold, the first homesteaders—all the colourful figures in history's pages. Or it may bring to mind limitless miles of golden grain, vast open ranges, the cattle barons of by-gone days, great packing industries, oil discoveries, the world's wheat kings—the steady advance of western civilization, the growth of manufacturing in a country once wholly agricultural. All these were and are the Canadian West—and more!



From the first thin line of Canadian Pacific rails across Canada has grown a vast network reaching west, north and south to open a land filled with unsuspected holiday spots, national and provincial parks, mountain resorts, magnificent hotels; the Canadian Rockies—then an impassable barrier, now—a mountain holiday area unsurpassed in the world; and beyond, the islands, bays and inlets of the British Columbia coast.

Manitoba, Saskatchewan, Alberta, British Columbia—each of the four Provinces loosely called "The Canadian West"—call to visitors to enjoy pleasure or business within their borders. Each has its own attractions. National Parks: Mount Revelstoke, Glacier, Yoho, and Kootenay, preserve 1771 square miles in British Columbia; Banff, Waterton Lakes, Elk Island and Jasper in Alberta total 7,043 square miles; Prince Albert, Saskatchewan, 1496; and Riding Mountain, Manitoba, 1149 square miles. All are accessible from Canadian Pacific stations.



WINNIPEG BEACH

Winnipeg, as Fort Garry, a century ago played a big part in the opening up of western North America. Winnipeg, today a travel hub serving areas undreamed of by the early explorers, is a manufacturing centre, rail, road and air focal point, and, almost in its own back yard—at Winnipeg Beach and other resorts on nearby Lake Winnipeg—a holiday centre. Canadian Pacific transcontinental lines to Vancouver and Edmonton, link all major railways with the beckoning west.

Kipling called Canada "Our Lady of the Snows". But that was before he sampled a Canadian summer's sunburn! Geography books emphasize the prairies when they talk about Manitoba. That's as right as Kipling was! And as wrong! Winnipeg, capital of Manitoba, has long been known as the grain capital, the gateway to the West. And that's right, too! It is the gateway to the West. And what a west! The Red River Valley, the Dawson Trail, Lac du Bonnet, Whiteshell Provincial Park, Killarney Lake, Souris, Boissevain, Brandon—second largest city in Manitoba—Riding Mountain National Park, with its herd of Buffalo, hotels, lodges, bungalow camps, movies, boating, swimming, fishing.

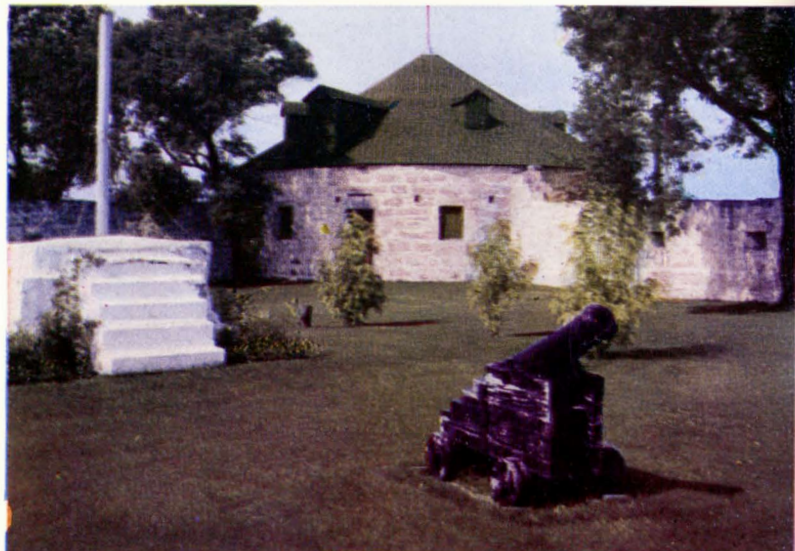


BUFFALO HERD — RIDING MOUNTAIN NATIONAL PARK



ROYAL ALEXANDRA HOTEL, WINNIPEG

OLD FORT GARRY





ROYAL CANADIAN MOUNTED POLICE RIDING SCHOOL

Saskatchewan—field of the cloth of golden grain—is another paradox. Here, too, is a prairie province that offers swimming, boating, hunting, fishing. In the south; wooded lakes, provincial parks, the Qu'Appelle river valley, level wheat-fields and the Parklands. Lakes, sloughs and stubble fields attract wild geese and ducks to the natural home of prairie chicken, pheasant and Hungarian partridge. Regina, the capital, is noted almost as much for its shade trees, Wascana Lake and park as it is for the training headquarters of the Royal Canadian Mounted Police. Moose Jaw and Saskatoon, busy centres, also link the province's play areas, and Prince Albert is the gateway to a northern wonderland, Prince Albert National Park. Hotels and bungalow camps, lakes small and large, connecting



HOTEL SASKATCHEWAN, REGINA

rivers that invite canoe-campers, a museum, stores, a dance pavilion, organized water transport, buffalo, white pelicans, cormorants, Hudsonian spruce grouse and a host of migratory birds fill the sanctuary with colour and song. Wild animals, safe in the park, include black bear, elk, moose, white-tailed deer, woodland caribou, beaver, mink, fox and muskrat.



BEACH SCENE — PRINCE ALBERT NATIONAL PARK



INDIAN DAYS AT BANFF



CHUCK WAGGON RACE CALGARY STAMPEDE

The southern Canadian Pacific mountain route runs from Moosejaw, Sask., Medicine Hat and Macleod, Alta., (junction for Calgary) through spectacular scenery skirting Kootenay and Arrow Lakes. Beautifully gardened Nelson, Trail—home of the Consolidated Mining and Smelting Company—the fabulous Sullivan Mine are reached by this route which rejoins the main line at the junction of the Fraser and Coquihalla Canyons.

Alberta—"cow-towns", oil derricks, the open range, coal mines, the foothills, the Canadian Rockies, dude-ranches, cowboys, bustling cities, express trains named for popular teams, high-heeled boots, jingling spurs, hairy "chaps", ten-gallon hats—and, high-spot of the year, the Calgary Stampede, world's greatest rodeo.

Terminus of the northern Canadian Pacific line from Winnipeg, linked by fast service with the main line at Calgary, Edmonton—gateway to the Northwest—joins Canada and Alaska-Yukon by road and air, serves the great new oil area, opens the way to Elk Island National Park—home of the world's largest Buffalo herd.

From Calgary rails and trails lead to Banff, Jasper and Waterton Lakes National Parks, the great mountain playgrounds of Banff and Lake Louise. Alternative Canadian Pacific routes lead—main line by the Bow Valley and Kicking Horse Pass—southward through the Crow's Nest Pass and Kettle Valley—to Vancouver.



HOTEL PALLISER, CALGARY



FORESTED VALLEYS GIRD THE CANADIAN PACIFIC MAIN LINE

Rushing rivers . . . still lakes that reflect serried, snow-crowned peaks . . . steep precipices . . . slopes swathed in evergreen . . . cool cascades . . . tumbling torrents . . . broad, meadowed valleys . . . rock-walled canyons . . . lodge-pole pines . . . elk . . . beaver . . . picturesque log cabins . . . "Mounties" . . . melting glaciers . . . caribou . . . wild-flowers . . . hoof-marked trails . . . gaunt, grey slopes above the timber line . . . dude-ranches . . . Banff's broad streets . . . bears . . . magpies . . . "Whiskey Jacks" . . . well-kept motor highways . . . eight daily transcontinental trains . . . castle-like Banff Springs Hotel . . . battlemented Mount Eisenhower . . . Indians . . . hotels to meet all tastes . . . trail rides . . . dude wranglers . . . sure-foot mountain ponies . . . swimming . . . hot springs . . . blue skies . . . blazing sunshine . . . cool nights . . . invigorating mountain air . . . eye-filling scenery . . . tranquil Lake Louise . . . poppies . . . the white chateau . . . deer . . . bighorn sheep . . . the Canadian Rockies!

MOUNT EISENHOWER





BANFF SPRINGS HOTEL



SCENIC CHAIR LIFT



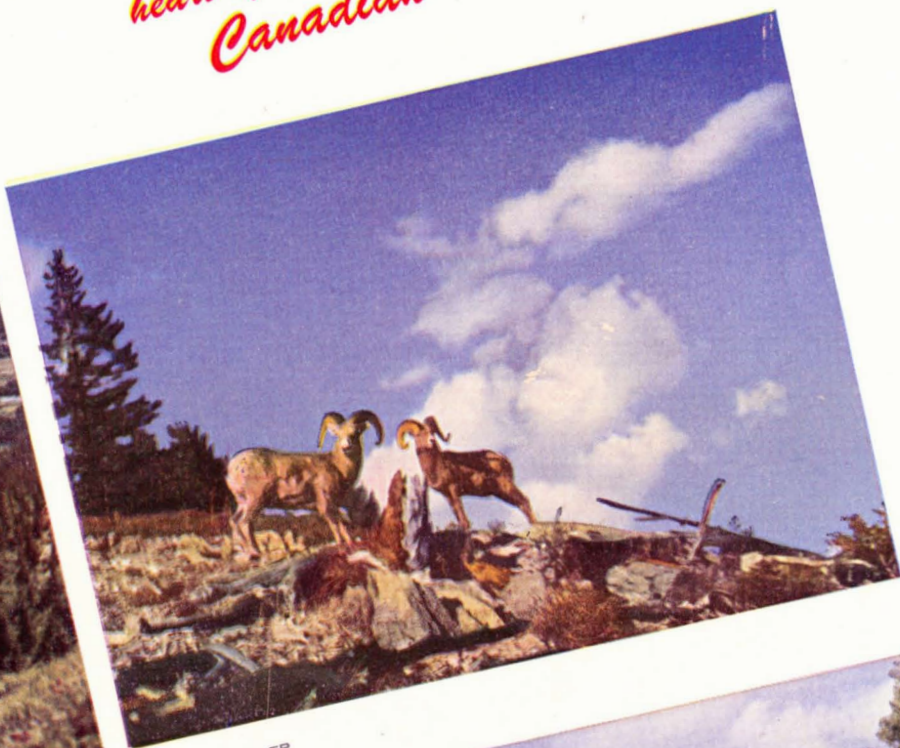
CAVE AND BASIN POOL, BANFF

Banff—almost a mile high—nestles in a broad valley at the confluence of the Bow and Spray Rivers. The town, sheltered by Tunnel and Cascade Mountains, has a typically western broad main street, flanked by wide avenues. Hotels, boarding houses, restaurants, wild animal corral, motion picture theatre, garages, the museum, liveries for horses and boats, the Cave and Basin sulphur pool, Banff School of Fine Arts and the scenic chair lift on Mount Norquay make this mountain town a real holiday attraction.



Banff

heart of the
Canadian Rockies



BIG HORN SHEEP



HIGH TRAILS IN THE ROCKIES



CASCADE MOUNTAIN
IS A HAZARD

A mile south of Banff, reached by a tree-lined avenue, is Banff Springs Hotel, famous baronial summer resort built by Canadian Pacific from the solid rock of Mount Rundle. Overlooking the Bow Valley, in the lee of towering Sulphur Mountain, Banff Springs Hotel is the last word in mountain resorts. It combines the luxury of a metropolitan hotel—even to an indoor swimming pool—with the outdoor life of summer—even to a warmed, sulphur-finged outdoor swimming pool. Riding, climbing, hiking, motoring—this by plastic-topped bus if you'd rather sit back and see the scenery—fishing, tennis, dancing, sketching, photography—Banff is the place for these. And golf! Golf at Banff is in a class by itself. The club-house lies just below the hotel, your first drive is across a tumbling river, every hole of the championship 18 has a breath-taking mountain back-drop.



Exquisite as flawless jade,
mirroring the surrounding
diamond-faceted peaks, Lake Louise,
site of another Canadian Pacific hotel

—Chateau Lake Louise—reigns in the western limits of Banff National Park. Here the Canadian Rockies reach to their greatest splendour. Mighty Victoria Glacier, its snow field 400 feet deep, Mount Temple, the Valley of the Ten Peaks, Moraine Lake, "Lakes in the Clouds", Plain of Six Glaciers, well-tended trails for boots or saddles, fill days with enjoyment. Rare, invigorating mountain air sharpens appetites, deepens sleep. Mountain highways lead to beauty in every direction. Daily bus services link Lake Louise with Moraine Lake, Lake Wapta, Yoho Valley, Field, Emerald Lake, Banff, Peyto Lake, Waterfowl Lakes, Saskatchewan River Crossing, Columbia Icefield, Jasper National Park.

LAKE LOUISE AND ITS SNOW COVERED GUARDIANS



THE SASKATCHEWAN GLACIER

Canadian Pacific Mountain Lodges



YOH0 VALLEY LODGE



LAKE WAPTA



MORAINS LAKE LODGE

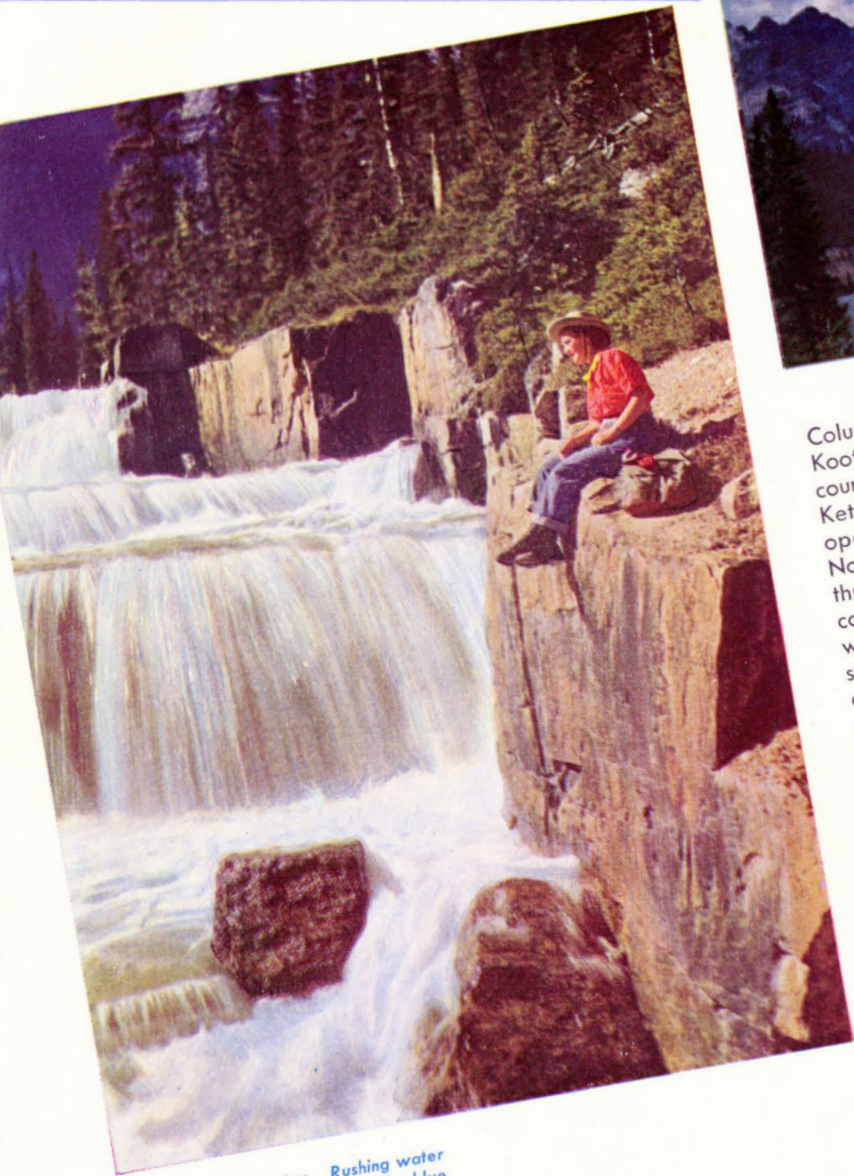
Quiet lakes, trails best known to the tame wildlife preserved in national parks, leafy woods, uplands carpeted with wild flowers, towering waterfalls, scenery that challenges description "hide" around corners of the Canadian Rockies in the pictureland surrounding The Great Divide.

Where Alberta and British Columbia march side by side, and tiny rills divide east, west and north to seek Atlantic and Pacific, Canadian Pacific mountain lodges offer inexpensive holidays close to nature at Emerald Lake, Lake Wapta, Lake O'Hara and, by Takkakaw Falls in the Yoho Valley.



LAKE O'HARA

Scenic Hinterland



This is camera country. Rushing water falls, leaning glaciers, incredibly blue lakes visible from almost any stop on mountain highways, abundant wild life, all tell you to take your camera when you visit the Canadian Rockies.



Columbia Lake, Lake Windermere, Arrow Lakes, Kootenay Lakes—these and the spectacular mountain country that lies between the Kicking Horse Pass and Kettle Valley routes of the Canadian Pacific are opened for you by branch services—rail or steamer. Not nearly so well known as the magnificent scenery through which the main line passes, this inner mountain country has a tremendous appeal. Long reaches of water disturbed only by swimming big game and the stern-wheel paddles of your steamer, peaks, glaciers and wooded slopes call to your camera or palette. Plan your visit carefully, for in this quiet backland service is not so frequent as on the main line or southern route. Starting points from the main line are: Golden, for the Lake Windermere country and Colvalli on the southern Canadian Pacific route; Revelstoke for Arrowhead, northern Arrow Lake steamer port and the service to Nakusp (and connections for Slocan and Kootenay Lakes) and Robson West.

The Okanagan Valley

Lessening altitudes and the temperate breezes that caress the Pacific slope of the Canadian Rockies usher in a different type of mountain holiday land southward from the Canadian Pacific main line at Sicamous. Terraced bench lands, orchards, gentler slopes and grey sage-brush tone the sharp brilliance of Alpine scenes to the pastel shades of pastoral country side. A riot of blossom and fruit borders the rail line from Shuswap Lake at Sicamous through busy Vernon to Kelowna, Okanagan Lake port, where a transfer to highway bus is made for the road trip via Peachland and Summerland beside the incredibly blue waters of Okanagan Lake to Penticton, Canadian Pacific southern route junction and home of "Ogopogo," a land-locked sea serpent familiar to local residents in song and story.



DUDE RANCHING IS FUN



PENTICTON'S FAMOUS BEACHES

Kelowna, famous for its annual regatta and summer-long sailing and boating on Okanagan Lake, and Penticton, popular as a holiday place for its golden sand beach, are ideal centres for motor trips through the lovely orchard areas developed by irrigation. Apples, pears, plums, peaches, apricots, cherries bloom riotously, fruit copiously to tease appetites and test camera capabilities. South of Penticton, the flaming contrast between desert land and irrigated orchards is pointed up by lush growths so heavy that fruit-laden branches must be supported by strong props.

Vancouver and Victoria



HOTEL VANCOUVER

Vancouver—end of steel, but not end of the line—western terminus of the Canadian Pacific trans-continental railway line, eastern terminus of Canadian Pacific airlines across south and north Pacific, gateway to Victoria, Vancouver Island, Seattle, and Alaska, has all the attractions of a seaport in addition to wide bathing beaches, golf links, a mountain-ringed harbour and spaciously laid out parks. Broad streets, smart shops, modern hotels, complete the picture.

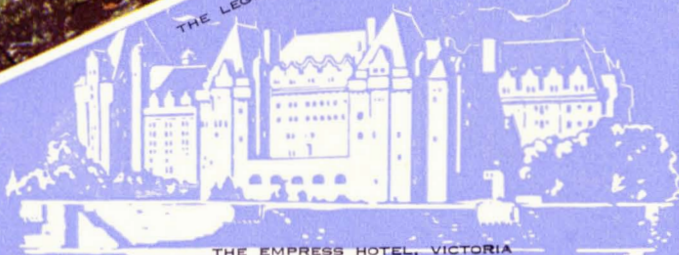


STANLEY PARK, VANCOUVER

Across the island-dotted Strait of Georgia, linked with the mainland by the Canadian Pacific British Columbia Coast fleet of fast, comfortable steamers in day and night service, lies Vancouver Island. Victoria, capital of British Columbia, and Nanaimo give access to a holiday area that has mountain, lake and river attractions as well as deep sea fishing, boating, swimming, golf, riding and other sports.



THE LEGISLATURE, VICTORIA



THE EMPRESS HOTEL, VICTORIA



PRINCESS KATHLEEN



Northward of the Canadian Pacific railway main line, opened to holiday travellers in search of new horizons by air, lies 21st Century Canada—Churchill on Hudson's Bay, the Peace River, Yellowknife, Fort Simpson, Coppermine, Aklavik, the Klondike, Alaska. Canadian Pacific Airlines routes, operated on schedule, serve these great areas, link Alaska and the Yukon with Vancouver and Edmonton, cross the Canadian Rockies between Calgary and Vancouver.

Smart, modern aircraft, the latest in ground equipment and navigation aids, connections with the railway and other airlines, combine to give you holiday areas undreamed of before the days of air travel.

Front cover—Banff Springs Hotel.

Colour photographs by

**CANADIAN PACIFIC;
NATIONAL FILM BOARD;
NATIONAL PARKS DEPT.**

**CANADIAN PACIFIC
BRITISH COLUMBIA
COAST SERVICE
BY
THE SPEEDY
"PRINCESS" FLEET
VANCOUVER
TO
VICTORIA
SEATTLE
NANAIMO
THE GULF ISLANDS
POWELL RIVER
COMOX
OCEAN FALLS
PRINCE RUPERT
KETCHIKAN
PETERSBURG
JUNEAU
SKAGWAY**



VICTORIA HARBOUR



B.C.C.S. SHIP IN THE LYNN CANAL, ALASKA



THE VALLEY OF THE TEN PEAKS

YOUR CANADIAN PACIFIC HOLIDAY

ALL IN ONE PACKAGE

It's beautifully simple—And simply beautiful, your holiday or business trip by Canadian Pacific. There's nothing for you to do but pack your bags. Your own agent, or the nearest Canadian Pacific office will do the rest.

Canadian Pacific owns and operates its own sleeping cars, dining cars, express, telegraphs, steamships and—a chain of 15 hotels across Canada from sea to sea. Tickets, reservations, travellers' cheques—all from the one office, what could be simpler?

For detailed information and reservations, you will get prompt service from your nearest CANADIAN PACIFIC office or

