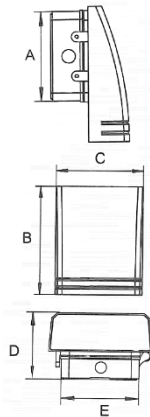


Luminaria para exterior



Dimensiones (mm)

Caja posterior: **A:** 130; **E:** 120.
Luminaria: **B:** 200; **C:** 160; **D:** 102



Código

IXION-29W-3K

Descripción

Luminaria tipo aplique, diseñada con módulos de LED. Sobrepuesta en muro. Con un difusor en vidrio templado transparente.




Materiales y acabado

Cuerpo en aluminio inyectado. Sujetador fabricado en aluminio. Todas las piezas con acabado en pintura poliéster electrostática en polvo.

Color

Negro.

Características técnicas

LED	 106°	 50,000h	IP 65	IK 08
PF >0,9	THD >10%	°C -30-50	V 90-305	

Fuente de luz

Regleta de LED.

Potencia Nominal	CRI	K	Lm / W	Lm de Salida
29W	>70	3000	120	3348

Características de fuente de luz

- Color temperatura disponible 3000K (cálido).
- Potencia de Salida: 27,9W.

Light efficiency:



Light quality:



Color temperature:



Output: 3348 lm

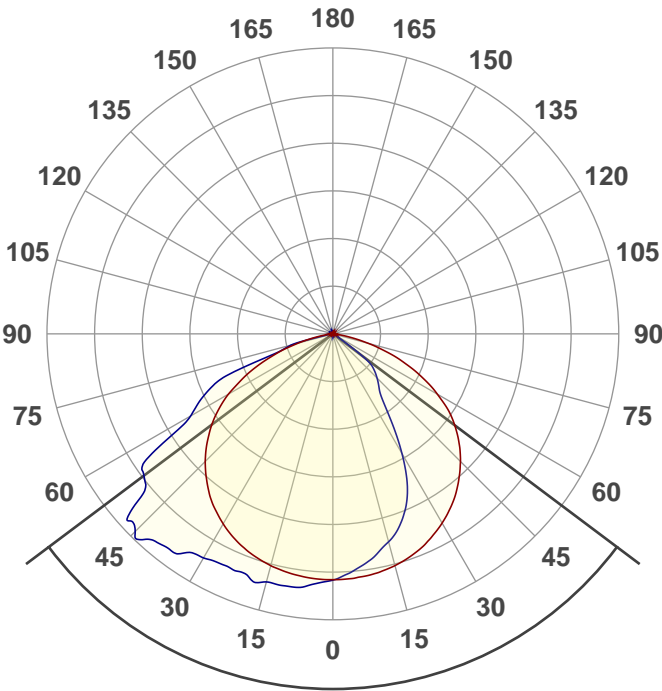
Peak: 1431 cd

Power: 27,9 W

PF: 0,98



Product name:
E0369-IXION-29W-3K



Beam angle **106,2°**



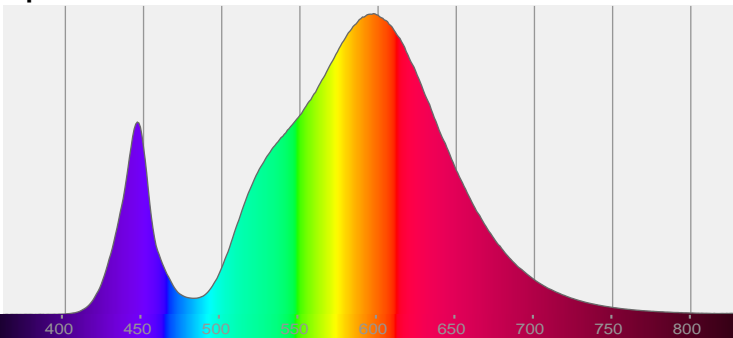
CIE 1931
x: 0,435
y: 0,403

THD Values:

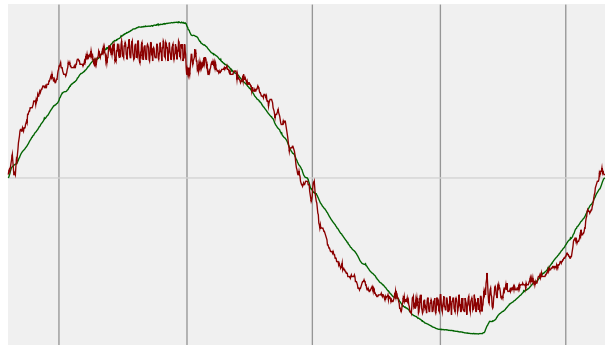
Voltage: 2,42%

Current: 16,92%

Spectra

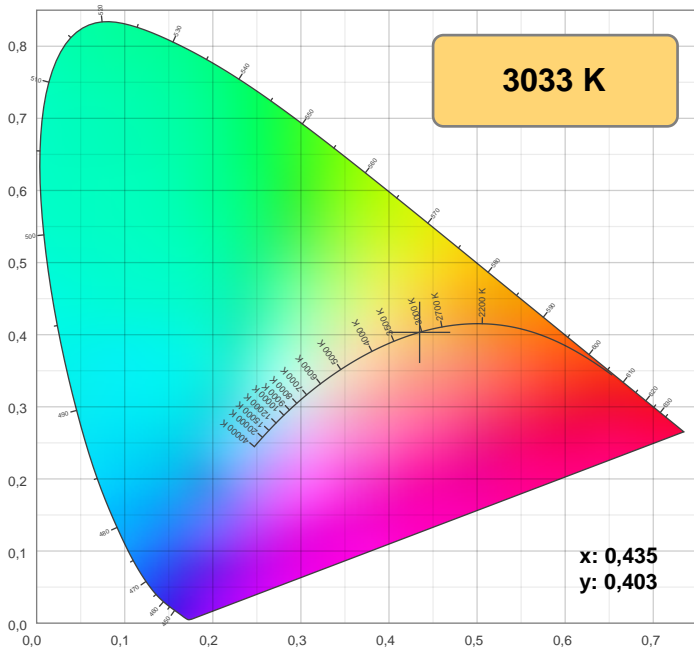


Power



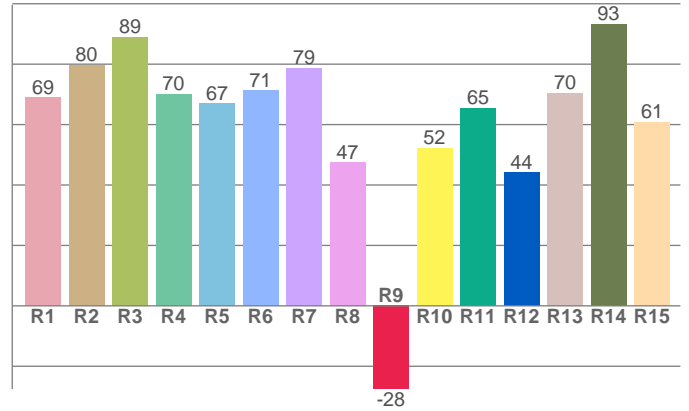
Voltage: 115 V
Current: 0,247 A
Frequency: 60,2 Hz

Color details



CIE 1931

CRI: 71,5 (R1-R8)

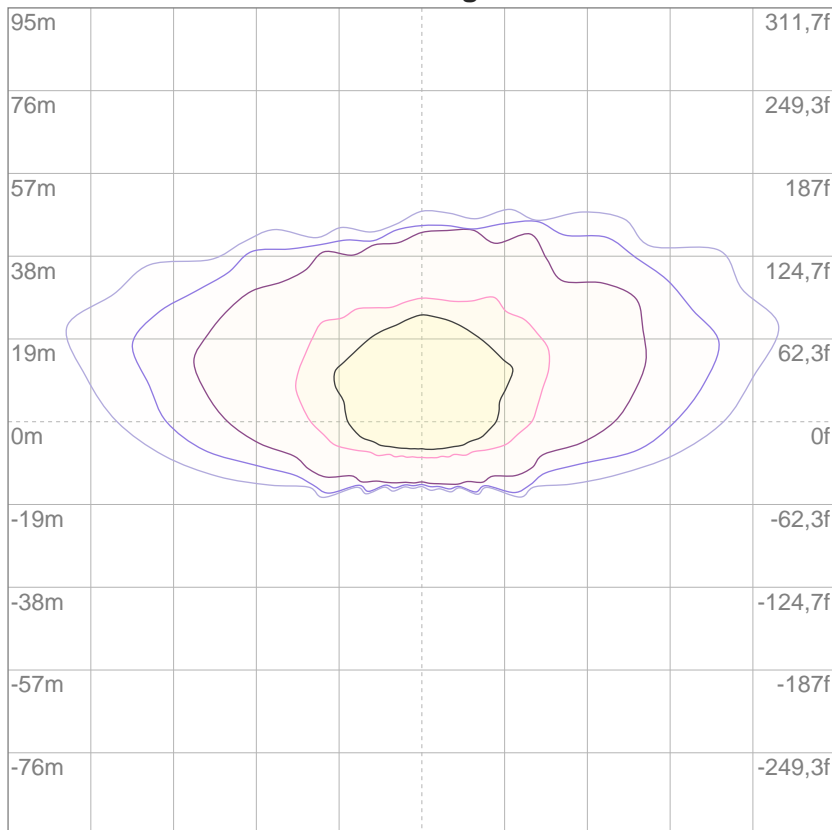


CRI R values, only R1-R8 are used to calculate final CRI value

R1	R2	R3	R4	R5	R6	R7	R8	9	R10	R11	R12	R13	R14	R15
68,9	79,6	88,9	70,0	67,0	71,3	78,8	47,4	-27,5	52,3	65,4	44,1	70,5	93,3	60,8

ISO Diagrams

ISO lux diagram



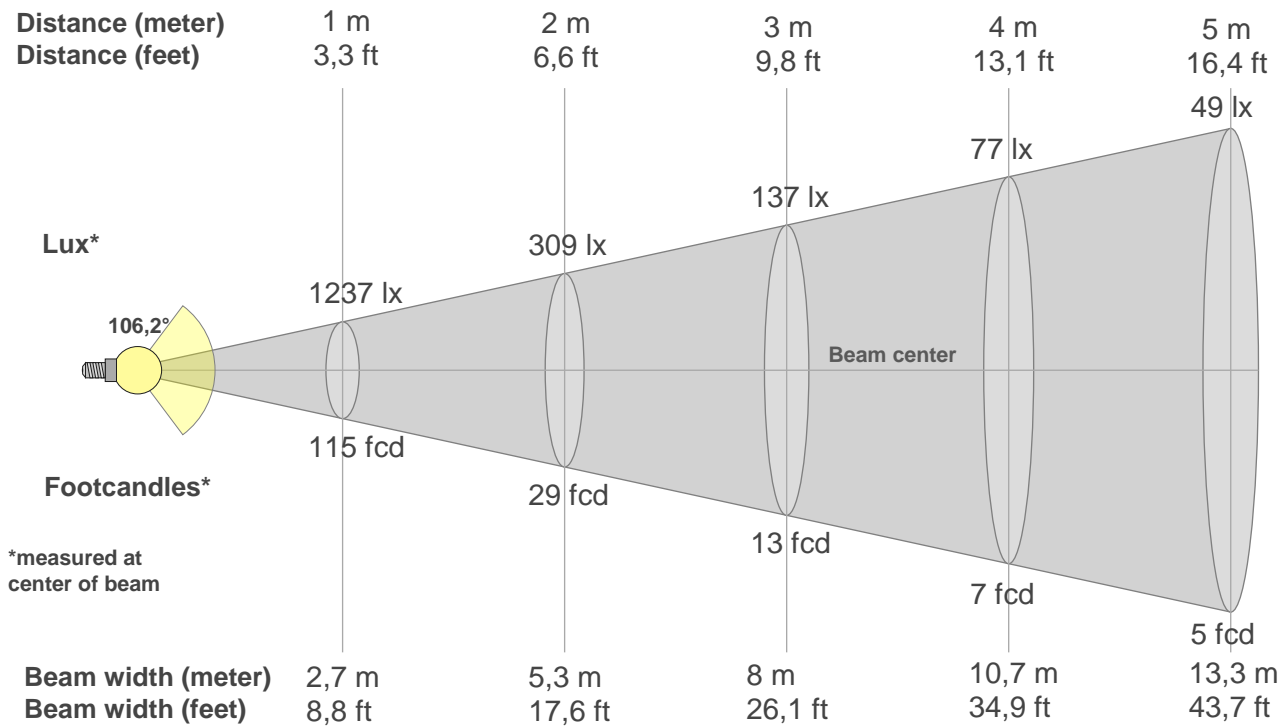
Mounting height: 10 meters (33 f)

3%	0,371 lx
5%	0,619 lx
10%	1,24 lx
30%	3,71 lx
50%	6,19 lx

Conditions:
 Number of c-planes: 24
 Lux at center: 12,4 lx

Lux distribution on a surface when lamp is mounted at 10 meters from the surface.

Beam details



Beam intensities from 1-20m

1m	2m	3m	4m	5m	6m	7m	8m	9m	10m	11m	12m	13m	14m	15m	16m	17m	18m	19m	20m
3,3ft	6,6ft	9,8ft	13,1ft	16,4ft	19,7ft	23ft	26,2ft	29,5ft	32,8ft	36,1ft	39,4ft	42,7ft	45,9ft	49,2ft	52,5ft	55,8ft	59,1ft	62,3ft	65,6ft
1237lx	309lx	137lx	77lx	49lx	34lx	25lx	19lx	15lx	12lx	10lx	9lx	7lx	6lx	5lx	5lx	4lx	4lx	3lx	3lx
115fcd	28,7fcd	12,8fcd	7,2fcd	4,6fcd	3,2fcd	2,3fcd	1,8fcd	1,4fcd	1,1fcd	1fcd	0,8fcd	0,7fcd	0,6fcd	0,5fcd	0,4fcd	0,4fcd	0,3fcd	0,3fcd	0,3fcd

Intensities in 0° c-plane

0°	5°	10°	15°	20°	25°	30°	35°	40°	45°	50°	55°	60°	65°	70°	75°	80°	85°	90°	95°
1237	1235	1225	1208	1182	1145	1100	1046	982	909	825	730	608	474	332	185	68	8	0	0
100%	100%	99%	98%	95%	93%	89%	85%	79%	73%	67%	59%	49%	38%	27%	15%	5%	1%	0%	0%

Intensities in 90° c-plane

0°	5°	10°	15°	20°	25°	30°	35°	40°	45°	50°	55°	60°	65°	70°	75°	80°	85°	90°	95°
1237	1197	1148	1084	1007	887	696	480	364	315	263	77	29	5	3	1	1	0	0	0
100%	97%	93%	88%	81%	72%	56%	39%	29%	25%	21%	6%	2%	0%	0%	0%	0%	0%	0%	0%

Intensities in 180° c-plane

0°	5°	10°	15°	20°	25°	30°	35°	40°	45°	50°	55°	60°	65°	70°	75°	80°	85°	90°	95°
1237	1235	1225	1208	1183	1149	1104	1051	984	909	821	723	607	470	322	182	66	9	0	0
100%	100%	99%	98%	96%	93%	89%	85%	80%	73%	66%	58%	49%	38%	26%	15%	5%	1%	0%	0%

Intensities in 270° c-plane

0°	5°	10°	15°	20°	25°	30°	35°	40°	45°	50°	55°	60°	65°	70°	75°	80°	85°	90°	95°
1237	1268	1291	1294	1287	1286	1302	1351	1373	1408	1245	1171	828	704	420	214	27	2	0	0
100%	102%	104%	105%	104%	104%	105%	109%	111%	114%	101%	95%	67%	57%	34%	17%	2%	0%	0%	0%

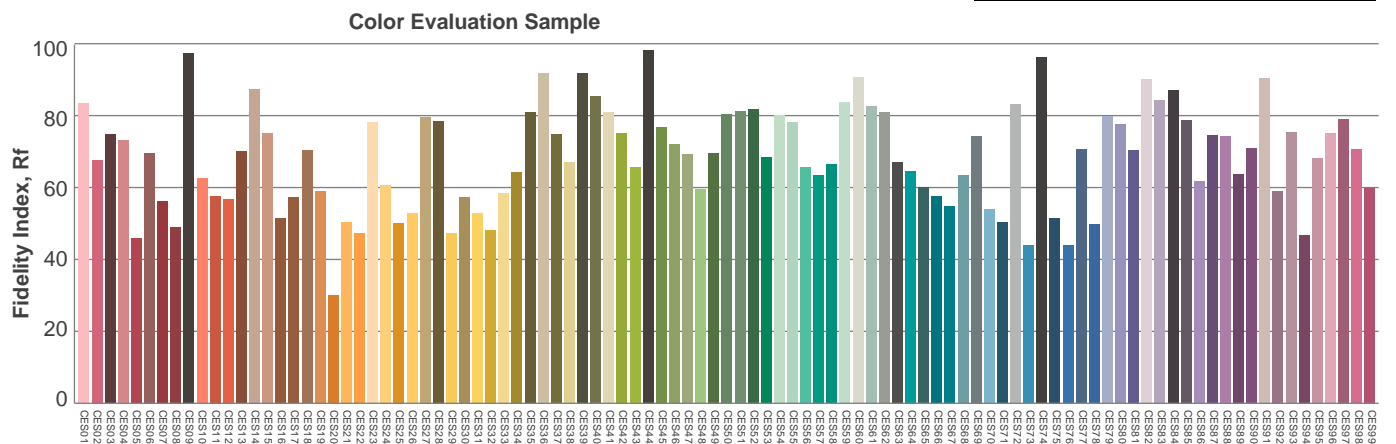
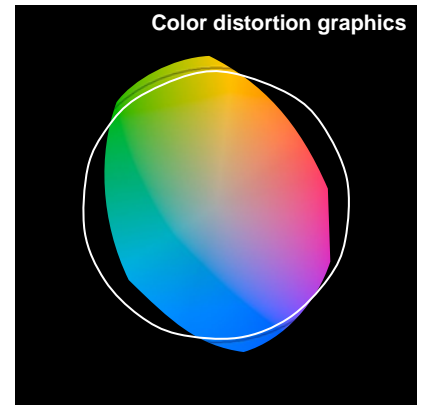
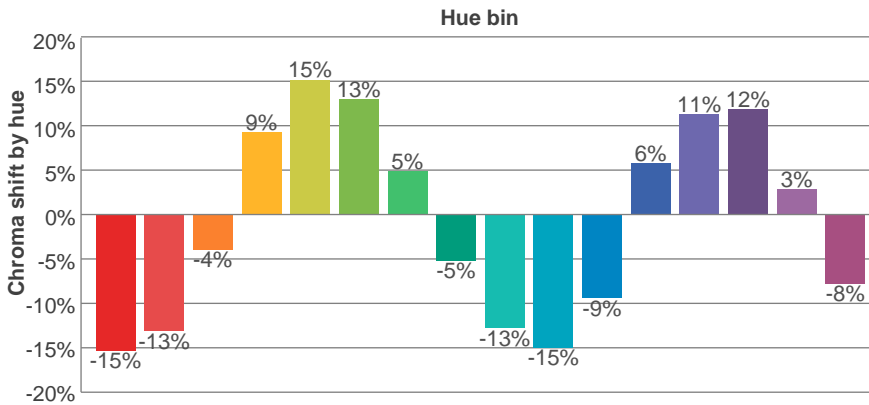
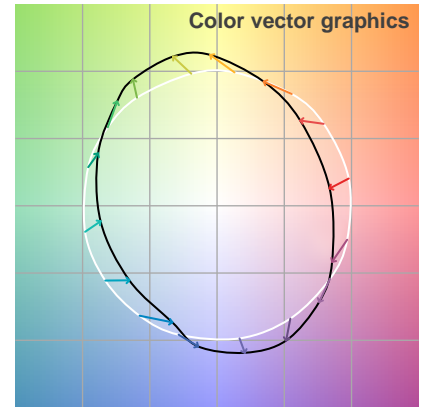
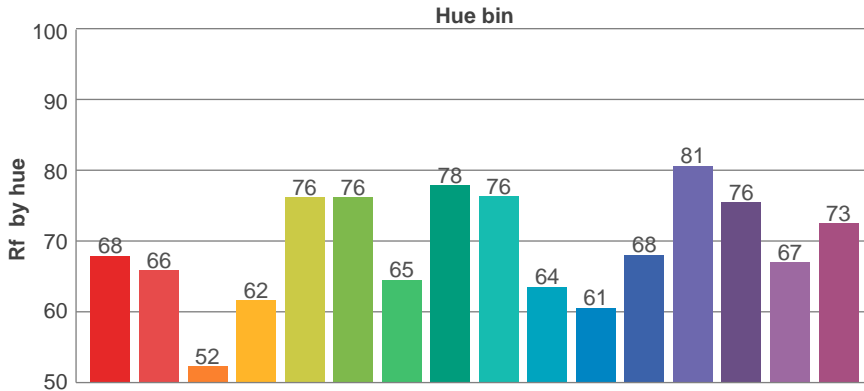
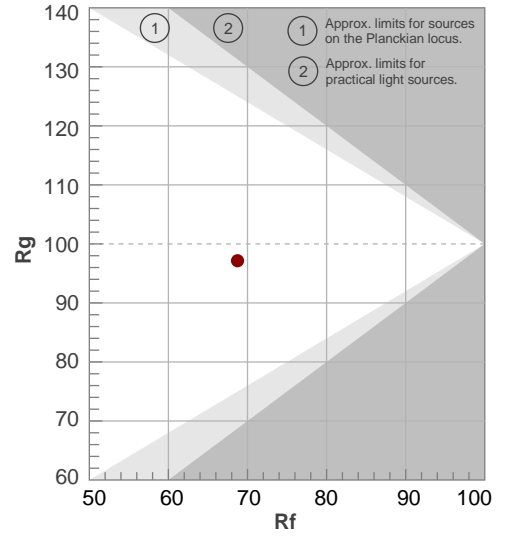
Beam angle 50%	Field angle 10%	Cutoff angle 2,5%	Intensity ratio in 120° cone	Intensity ratio in 90° cone
106,2°	141,3°	148,3°	84,1%	57,1%

TM30 details

Rf 68,7
Fidelity index Rf

Rg 97,1
Gammut index Rg

Hue Bin	R _f	Graphic shifts (%)	
		Chroma	Hue
1	68	-15%	-4%
2	66	-13%	12%
3	52	-4%	22%
4	62	9%	20%
5	76	15%	11%
6	76	13%	-5%
7	65	5%	-20%
8	78	-5%	-12%
9	76	-13%	-5%
10	64	-15%	10%
11	61	-9%	23%
12	68	6%	16%
13	81	11%	2%
14	76	12%	-12%
15	67	3%	-19%
16	73	-8%	-18%



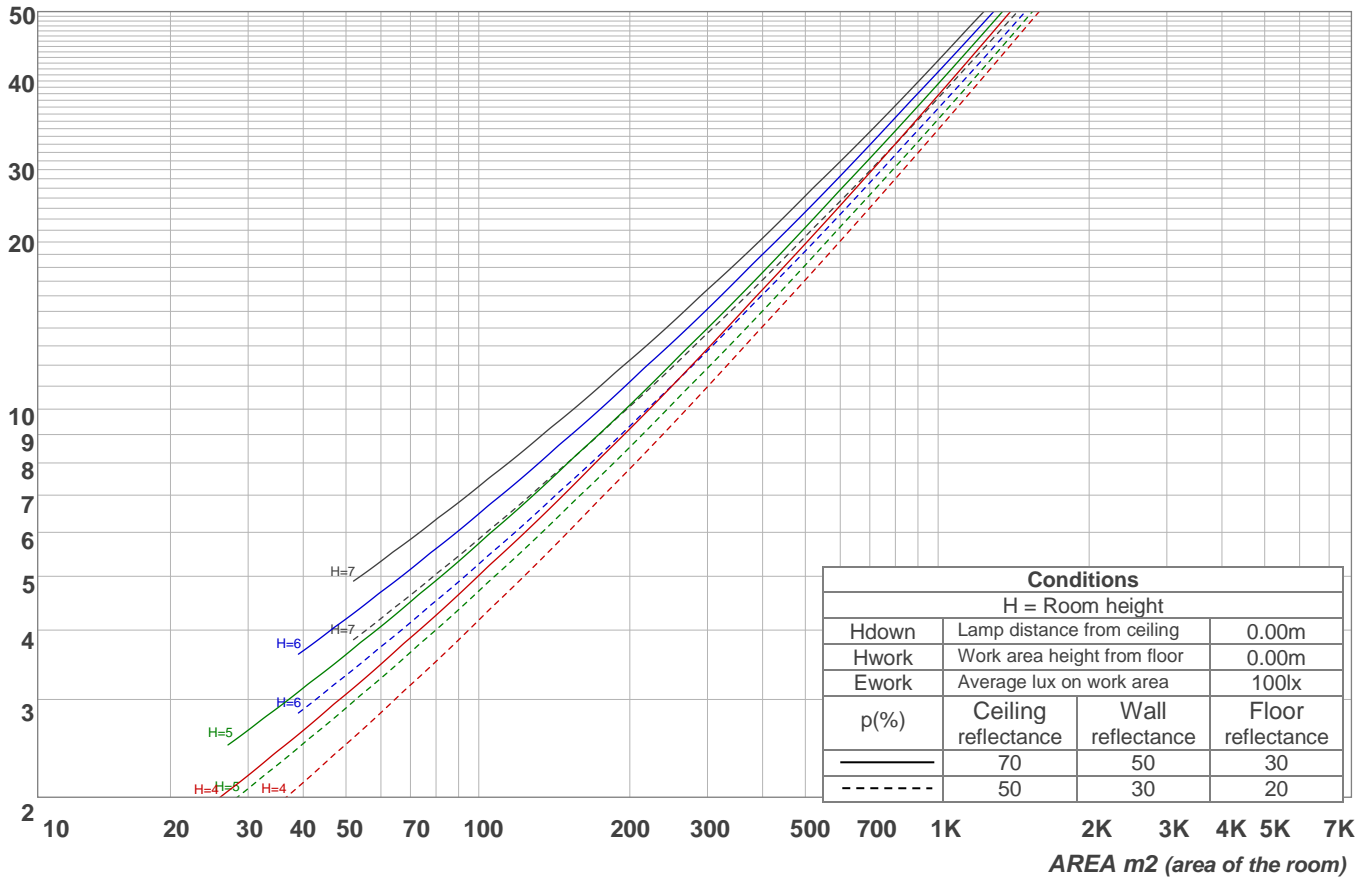
Light planning

Coefficients of Utilization

Ceiling reflectance	80				70				50			30			10			0
Wall reflectance	70	50	30	10	70	50	30	10	50	30	10	50	30	10	50	30	10	0
Floor reflectance	20	20	20	20	20	20	20	20	20	20	20	20	20	20	20	20	20	0
RCR	(RCR: Room Cavity Ratio)																	
	Room Values are expressed as percentage of Lumens delivered to the task surface																	
0	119	119	119	119	116	116	116	116	111	111	111	106	106	106	102	102	102	100
1	110	106	102	98	107	103	100	97	99	96	94	95	93	91	92	90	88	86
2	100	93	86	81	98	91	85	80	87	82	78	84	80	76	81	78	75	73
3	92	82	74	68	89	80	73	67	77	71	66	74	69	65	72	67	64	62
4	84	73	64	58	82	71	63	57	69	62	56	66	60	56	64	59	55	53
5	77	65	56	50	75	64	56	49	62	54	49	60	53	48	58	52	48	46
6	71	58	50	43	70	57	49	43	56	48	43	54	47	42	52	47	42	40
7	66	53	44	38	64	52	44	38	51	43	38	49	43	38	48	42	37	35
8	62	48	40	34	60	48	40	34	46	39	34	45	38	34	44	38	33	31
9	58	44	36	31	56	44	36	31	43	35	30	41	35	30	40	34	30	28
10	54	41	33	28	53	40	33	28	39	32	28	38	32	27	37	32	27	26

LAMPS (number of lamps)

Luminaire budgetary diagram

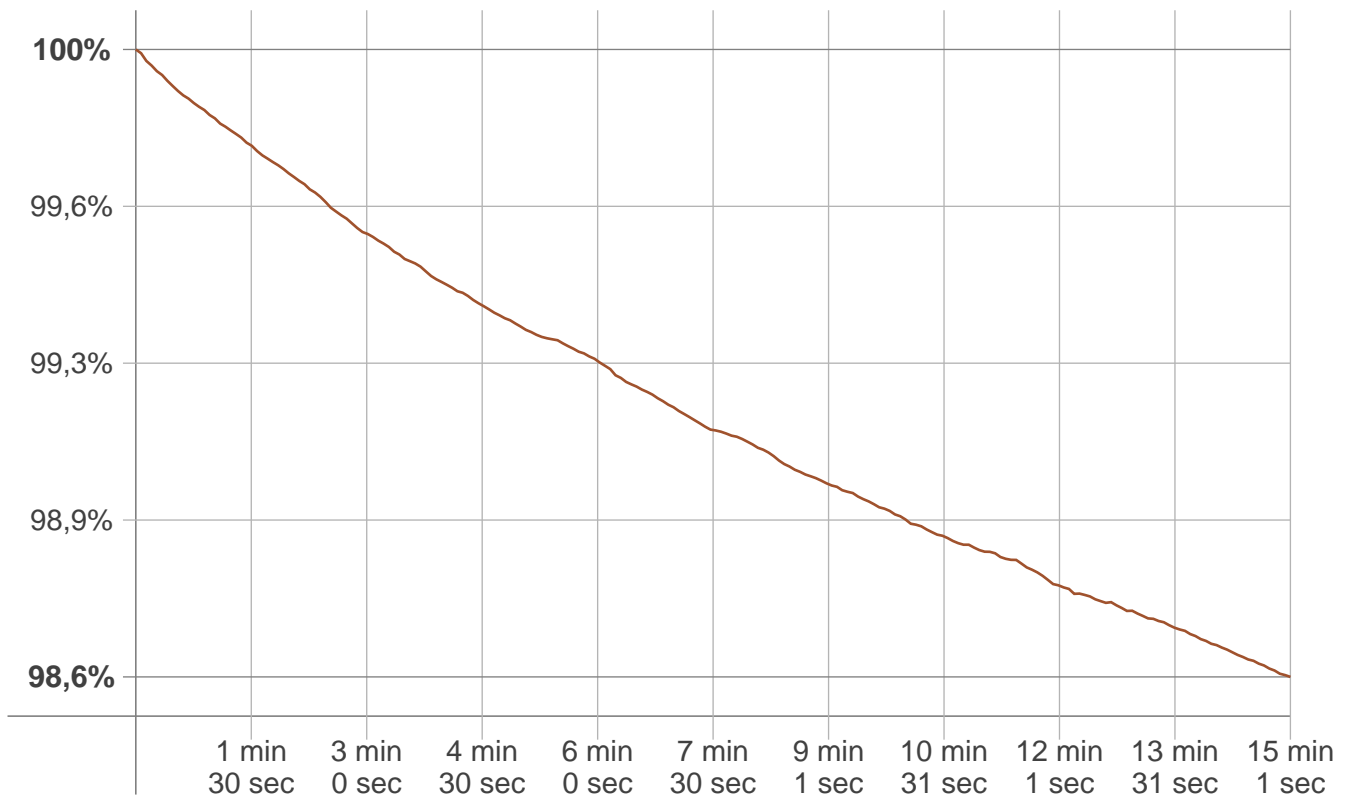


Zonal Lumen Summary

0°-10°	10°-20°	20°-30°	30°-40°	40°-50°	50°-60°	60°-70°	70°-80°	80°-90°
117 lm	338 lm	515 lm	615 lm	651 lm	579 lm	383 lm	138 lm	8,10 lm
90°-100°	100°-110°	110°-120°	120°-130°	130°-140°	140°-150°	150°-160°	160°-170°	170°-180°
0,208 lm	0,281 lm	0,351 lm	0,376 lm	0,369 lm	0,321 lm	0,235 lm	0,128 lm	0,029 lm

Stabilization

Warmup curve



Warmup result

Warmup time:	15 min 1 sec
Warmup variation	-1,4%

Warmup conditions

Stable period:	15 min
Stable change max:	2,0%
Minimum time:	15 min

Color temperature change

CCT start	CCT change	CCT end
3027 K	+6 K	3033 K

Output change

Output start	Output change	Output end
3394 lm	-46 lm	3348 lm